

THE CAT® 6015 HYDRAULIC MINING SHOVEL

MORE TIME TO LOAD MORE.



1. Robust carbody and crawler frames with Cat® HD undercarriage, HD rollers, HD idlers, HD track, and track tensioning
2. Strengthened and heavy-duty final drive, with improved serviceability (retrofitable)
3. **New** HD undercarriage protection package (retrofitable)
4. Durable boom with energy efficient boom lowering float valves
5. **New** standard bucket linkage Autolube eliminates need for manual lubrication
6. Productive and durable buckets equipped with a wear protection package of choice
7. Safe access and egress with powered 45° access stairway (optional)
8. **New** Tier 1 and Tier 2 engine modules with Cat C27 engine, optimized hydraulics and hose routing. Meets equivalent U.S. EPA Tier 1 and China Nonroad Stage III emissions standards, equivalent to U.S. EPA Tier 2.
9. Comfortable and productive operator's cab with large, color touchscreen and HVAC
10. LED high-brightness working and service lights
11. Easily accessible ground level service station
12. Oil cooler module with fully independent oil cooling system
13. Connects to Cat MineStar™ Solutions with new Product Link™ Elite
14. Optional Camera Monitoring System or Vision 360 retrofit kit increase situational awareness and reduce operator fatigue
15. **New** Pilot Pump delivers minimum 5.5% increase in fuel efficiency and improved performance

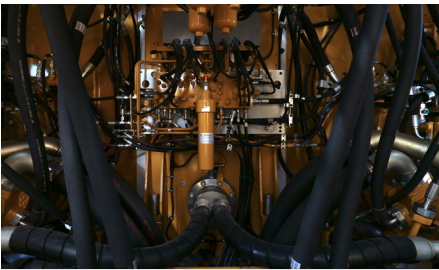
THE CAT® 6015 HYDRAULIC MINING SHOVEL



TIER 1: 812 hp / 606 kW
TIER 2: 839 hp / 626 kW
ENGINE OUTPUT

BACKHOE: 16.1 t / 14.6 mt
BUCKET PAYLOAD

BACKHOE: 154 t / 140 mt
OPERATING WEIGHT

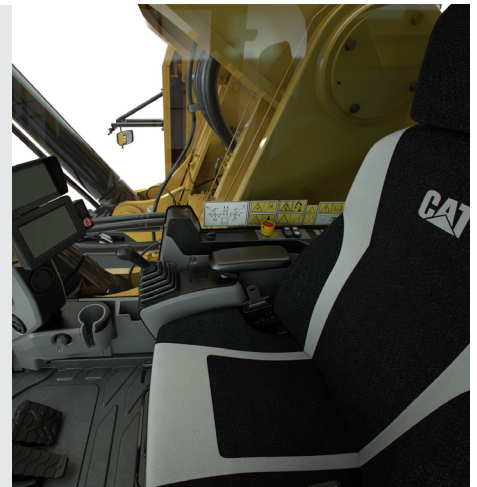


ENGINES

- » Boost productivity with a durable and reliable C27 engine, certified to meet U.S. EPA Tier 2 and Tier 1 equivalent.
- » Keep engine and pumps running at optimum speeds with Load Enhanced Anticipatory Control (LEAC).

CAB

- » Excellent visibility with unobstructed view of digging environment and upward view through skylight.
- » Comfortable and productive operator environment with heated, pneumatically-cushioned and multi-adjustable comfort seat.
- » Independently adjustable joystick consoles.
- » Joystick controls alternative pattern as standard.
- » Pressurized cab with positive filtration.
- » Optional Camera Monitoring System or Vision 360 Retrofit Kit.
- » Superior insulation for reduced noise and temperature control.



SAFETY

- » Improve operator protection with protective guards on the top of the cab and the optional front guard.
- » Anti-slip walkways and optional 45-degree stairway allow for safe access and egress.
- » Safety glass in all windows protects operator.
- » Five emergency shut-off switches, with one easily accessible in the cab to shut down the electrical system in case of emergencies.
- » Support sustainable development goals with optional Cat Bio Hydo Advanced hydraulic fluid.

SERVICEABILITY

- » Diagnose and execute maintenance more effectively with Cat Electronic Technician (ET).
- » Inspect, maintain, and repair the 6015 more easily with improved service documentation, new visual inspection ports and commonization of accumulator charging ports and tools.
- » Reduce downtime with enhanced warning levels for hydraulic oil temperature and improved data link diagnostics including new pilot pressure monitoring via ET.
- » Ground level service station provides easy access to fast-fill diesel fuel and grease connections.
- » Enable collection and transmission of machine data with the new Product Link Elite technology.
- » Experience maintenance free Positive Pin Retention tracks that are specially machined to extend internal pin/bushing wear life and fatigue resistance.

RECENT ENHANCEMENTS*

Increased Uptime

- » New standard bucket linkage Autolube eliminates need for manual lubrication
- » New slew bearing with triple roller design for increased durability
- » New standard grease tank with increased capacity to support 500-hour intervals

Improved Productivity & Performance

- » Proven pass match with 100t trucks
- » Improved productivity for high altitude applications
- » New Pilot Pump System, which delivers improved performance and a minimum 5.5% fuel savings under working conditions

Streamlined Service

- » Improved hose routing for better durability
- » Hoses can be built by the local Cat dealer
- » Increased parts commonality with Cat machines

*Compared to previous model



AEXQ4603

© 2025 Caterpillar. All Rights Reserved. CAT, CATERPILLAR, LET'S DO THE WORK, their respective logos, "Caterpillar Corporate Yellow", the "Power Edge" and Cat "Modern Hex" trade dress as well as corporate and product identity used herein, are trademarks of Caterpillar and may not be used without permission.