

950

WHEEL LOADER



U.S. EPA Tier 3 Equivalent/EU Stage IIIA Equivalent*

| | |
|-------------------------|-----------------------|
| Engine Power | 186 kW (249 hp) |
| Operating Weight | 18 076 kg (39,851 lb) |

U.S. EPA Tier 4 Final/EU Stage V**

| | |
|-------------------------|-----------------------|
| Engine Power | 186 kW (249 hp) |
| Operating Weight | 19 260 kg (42,461 lb) |

*Meets Brazil MAR-1 and UN ECE R96 Stage IIIA emission standards, equivalent to U.S. EPA Tier 3 and EU Stage IIIA.

**Meets U.S. EPA Tier 4 Final, EU Stage V, and Japan 2014 emission standards.



CAT[®] 950

LOAD SMART. WORK ANYWHERE.
GET MORE DONE.

The Cat[®] 950 Wheel Loader is built to move more with less effort. It delivers premium performance and smart features that help operators work faster and more efficiently. Extended service intervals and enhanced safety features help to reduce downtime and protect your crew. Designed to run clean without slowing down, it's jobsite-tough and ready for construction, aggregates, forestry, and industrial work.



WHEEL LOADERS MADE FOR MORE

Cat wheel loaders were built with efficiency in mind, offering you the best in:

- + RELIABILITY
- + DURABILITY
- + PRODUCTIVITY
- + FUEL EFFICIENCY
- + TECHNOLOGY
- + VERSATILITY

Experience higher performance while reducing costs and fuel consumption with Cat wheel loaders.



EXCELLENT PRODUCTIVITY

Enhanced performance starts with auto differential lock* and smooth neutralizer engagement. On-board QR code** gives instant access to training videos and feature guides to be used before operation, while in-cab monitor alerts help keep maintenance on track. Configuration options, such as remote control, to support a wide range of applications.

EFFICIENT OPERATION

Upgraded Remote Services keep the machine up-to-date and reduce troubleshooting time. Tire monitoring ensures smooth, cost-effective operation. Updated Cat Advanced Payload improves jobsite efficiency.

ENHANCED SAFETY

Cat Detect vision systems enhance visibility and risk management and support integration with people and object detection. Enables in-cab and bystander collision warnings and automatic emergency braking. With a VisionLink™ subscription, safety events report directly to the back office. Cat Command remote control lets operators work safely from a distance.

MAXIMIZE EFFICIENCY RIGHT FROM THE CAB

Cat wheel loaders feature integrated technologies that help make your operation more efficient.

CAT PAYLOAD

- + Achieve precise load targets every time
- + Track daily production

AUTODIG WITH AUTO SET TIRES

- + Boost productivity with automated loading
- + Reduce tire wear

JOB AIDS

- + Make machine operation easier

A MORE EFFICIENT JOBSITE MEANS
MORE PROFIT IN EVERY LOAD.

*Where applicable

**950 (14C) compared to the 950 (14B)

RELIABLE, PROVEN COMPONENTS AND TECHNOLOGY

Staying ahead of the competition, Caterpillar offers a wide variety of cutting-edge technologies to get the job done quickly and easily with outstanding accuracy.



COMPONENTS YOU CAN COUNT ON

Every machine is equipped with a combination of proven electronic, hydraulic, cooling, and powertrain systems. Amplify your efficiency with better traction and enhanced work tools, delivering continuous productivity for your machine. Reliable fuel systems boost machine performance and fuel economy, lowering your overall costs and fuel consumption. You can rely on our components to save you time, money, and effort.



PRODUCTIVE RESULTS

WORK SMART AND MOVE MORE

ON-BOARD JOB AIDS

Job aids help make machine operation easier, while also allowing your operators to improve and optimize their skills on the jobsite.

ADVANCED POWERSHIFT TRANSMISSION

The 5-speed transmission including a lock-up clutch torque converter delivers smooth shifting, fast acceleration, and speed on grade, amplifying your performance and fuel efficiency.

OPTIMIZED RIDE CONTROL SYSTEM

Optional dual accumulator system enables a better ride in loaded and unloaded situations. It improves smoothness over rough terrain, increasing confidence and efficiency and ensuring excellent material retention.

BETTER TRACTION

Autodig with Auto Set Tires assures that the front tires have adequate traction for consistent high bucket fill factors, delivering excellent productivity. Refined Auto Set Tires simplifies setup, boosts performance, and cuts wear for even smoother operation. Automatic front differential lock removes the burden from the operator by automatically engaging the differential lock to improve overall traction. Optional automatic front and rear locks also available.

PERFORMANCE SERIES BUCKETS

Easy-to-load Performance Series Buckets improve material retention and reduce dig times, significantly improving productivity and fuel efficiency, resulting in unsurpassed production capabilities with increased fill factors – ranging from 100% to 115%.

AGGREGATE HANDLER

Aggregate packages are specialized offerings for loose aggregate rehandling applications. Payloads can be increased above other applications by installing larger buckets and counterweights in compliance with Caterpillar payload policy.

THE RIGHT MIX OF FEATURES

Fine-tuned for the right applications:

- + EXCEPTIONAL FUEL ECONOMY, MAXIMIZED UPTIME, AND LOW MAINTENANCE COSTS
- + HIGH POWER AND PERFORMANCE ACROSS A VARIETY OF APPLICATIONS
- + ENHANCED RELIABILITY THROUGH COMMONALITY AND SIMPLICITY OF DESIGN
- + WORLD-CLASS SUPPORT FROM THE CAT DEALER NETWORK
- + DURABLE DESIGNS WITH LONG LIFE TO OVERHAUL



HIGH PERFORMANCE POWERTRAIN

Our powertrains come standard with a lock-up clutch transmission, matching the engine power to increase fuel efficiency while delivering optimal performance.



DURABLE AXLES

Axles are designed to handle your most extreme applications. The rear axle oscillates to ± 13 degrees for excellent stability and traction on even the roughest terrain.



LINKAGE CONFIGURATION

Z-bar linkage provides high breakout force at ground level.



OPTIMIZED HYDRAULICS

Our hydraulic systems come equipped with a mono-block main hydraulic valve. This design reduces weight while decreasing leak points by 40%.



DURABLE FRAMES

The robotically welded two-piece structural frame absorbs impact associated with excavation and loading, while the hitch system provides high bearing force capacity.



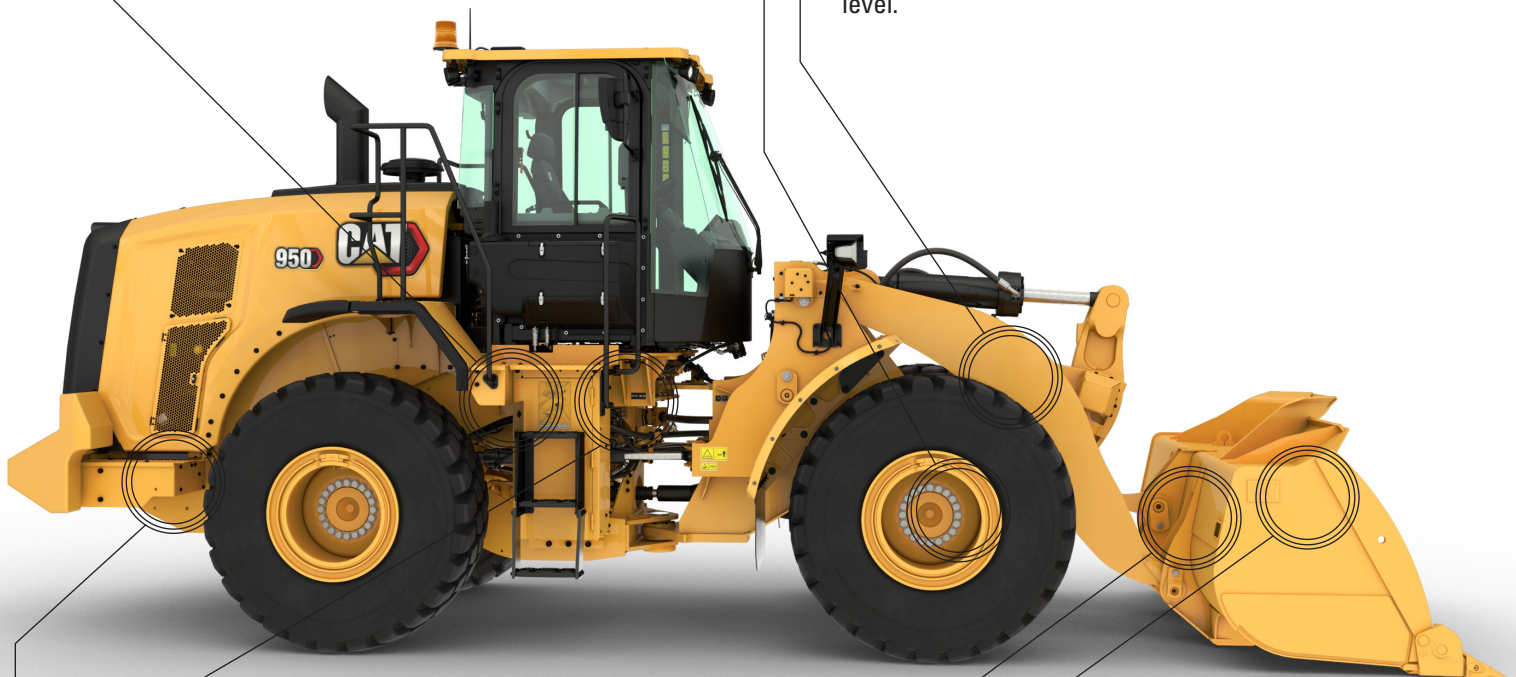
EXTENSIVE RANGE OF ATTACHMENTS

Do more jobs with one machine. An extensive range of work tools and bucket styles are available to optimize these machines for your operation.



QUICK COUPLERS

For versatility, buckets and components can be changed without leaving the cab, allowing the machine to quickly move from task to task.



INTEGRATED TECHNOLOGY SOLUTIONS

FOR EFFICIENT AND SAFER OPERATION

Your machine comes equipped with innovative Cat technologies that give you the edge. Operators of all experience levels will dig and load with more confidence, speed, and accuracy. The result? Better productivity and lower costs.



CAT DETECT

Cat Detect vision systems scale your jobsite needs to provide increased visibility and help you manage ever-changing conditions that pose unexpected risks potentially leading to injury or repair costs.

- Rear vision camera enhances visibility behind the machine, helping you work safely and confidently.
- Surround vision provides 360° visibility around the machine, including the articulation hitch area, enhancing an operator's situational awareness.

To complete the Cat Detect vision system offerings, the machines can be equipped with a rear radar system, which features speed-sensitive alerts and ground clutter filtering to avoid annoyance.

Collision Mitigation System is an operator assist feature designed to enhance situational awareness when reversing the machine. It utilizes an integrated and intelligent sensor array to provide reverse collision warnings, detect people, inhibit motion, and enable automatic emergency braking. Additionally, visibility into event data and safety trends is available through VisionLink™.

CAT COMMAND

Cat Command remote control enables equipment operators to work safely outside the machine when working in hazardous environments. Command offers the choice of handheld consoles* (line-of-sight) or long-distance virtual stations (non-line-of-sight). Deep integration with machine systems enables efficiency and productivity by maintaining the use of in-cab technology* features.

CAT PAYLOAD**

Cat Payload technology delivers precise bucket load information with on-the-go weighing, which helps prevent over- or underloading. The low lift weigh and manual tip-off functions optimize the final bucket process and maximize efficiency.

CAT ADVANCED PAYLOAD

Advanced Payload is a system upgrade that offers expanded features and capabilities. Tip-off assist adds automation to the final bucket process. Multitask mode tracks two loading processes simultaneously. Recipe mode ensures accurate material blends. Split mode allows for loading multiple bodies while tracking individual targets and grand totals. Expanded split mode simplifies load tracking to boost productivity and reduce errors. Add Dispatch for Loading*** to integrate the loader into the scale house process. E-Ticketing allows an operator to generate a weighing ticket and effortlessly send it over the air to any email address.

CAT PAYLOAD FOR TRADE****

The Cat Payload for Trade option for Cat Advanced Payload allows you to integrate the scale data directly into your business processes. It is type approved by the International Organization of Legal Metrology, while retaining all the features of the standard version of Cat Advanced Payload.

* Cat Command is not available in all regions or for all models. Please consult with your Cat dealer for machine compatibility and availability in your area.

** Not legal for trade.

*** Subscription and compatible scale house software required.

**** Available in Europe and Australia. Country certifications vary. Contact your Cat dealer for more information.

REAL-TIME INFORMATION FROM CAT EQUIPMENT MANAGEMENT TAKES THE GUESSWORK OUT OF MANAGING YOUR EQUIPMENT

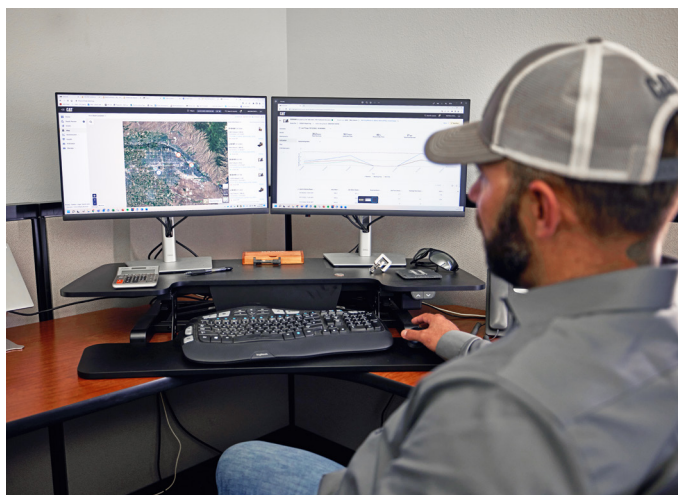
Cat Equipment Management technologies work together to put equipment information at your fingertips. Get real-time access to information on every machine in your fleet on any jobsite – no matter the size of the operation or the brands of equipment you run.



VISIONLINK™

Gather and summarize machine telematics and jobsite data from all your equipment – regardless of the manufacturer.* View actionable information such as idle time, fuel burn, location, payload, load counts, total cycles, and more to improve machine efficiency, productivity, and utilization. Access data anywhere via a mobile, tablet, or desktop device – on or off the jobsite.

*Data field availability can vary by equipment manufacturer. VisionLink subscription required. Availability may vary by region. Consult your Cat dealer for more details.



CAT REMOTE SERVICES*

A suite of technologies that improve your jobsite efficiency.

- + **Remote Troubleshoot** allows your Cat dealer to perform diagnostic testing on your connected machine remotely, pinpointing potential issues while the machine is in operation. Remote troubleshooting helps to ensure the technician arrives with the correct parts and tools the first time, eliminating additional trips, to save you time and money.
- + **Remote Flash** allows you to update onboard software without a technician being present, allowing you to initiate software updates when convenient, increasing your overall operating efficiency.
- + **Operator ID** requires operators to log in via Passcode or Bluetooth® (Cat Key Fob) at machine startup, helping to deter theft, vandalism, and unauthorized use. It saves settings from the last time an operator was logged in and maintains profiles that were retained during machine software flash updates. Operator IDs are easily managed through the touchscreen and can also be managed remotely and uploaded to the machine through VisionLink.

*Must be within cell range coverage.



CAT INSPECT

Cat Inspect is a mobile application that allows you to easily perform digital preventative maintenance checks, inspections, and daily walkarounds. The app includes machine-specific Preventive Maintenance (PM) checklists to perform service intervals as recommended in the Operation and Maintenance Manual. Inspections can easily be integrated with other Cat data systems like VisionLink, so you can keep a close eye on your fleet.

SUPERIOR FUEL EFFICIENCY



ENGINE

High power density and fuel efficiency set our engines apart. Our engines feature Cat electronics, fuel injection, and air-management systems.

MACHINE SPEED LIMIT

Operators have the ability to regulate the machine's maximum speed, which conserves fuel by limiting runout speed in load and carry applications. Controlling the machine's speed also aids in adhering to safety regulations and best practices.

ADVANCED SYSTEM INTEGRATION

Low fuel consumption is the result of advanced system integration of the engine, powertrain, hydraulic system, and cooling system.

POWER MODES

Operating the machine in the standard power mode will assure the best efficiency results in most applications. Using the available HP+ mode will not significantly increase the machine's digging capability but will allow higher speeds on grades in Load and Carry.

PROVEN ENGINE SYSTEMS

The C7.1 utilizes technologies to deliver the lowest possible fluid consumption. Including proven common-rail fuel system and latest injector technology.

AFTERTREATMENT TECHNOLOGIES

Tier 4 Final and Stage V compliant machines only

The Cat Clean Emissions Module delivers the performance and efficiency that customers demand, while meeting emission standards. It is completely automatic and does not interrupt the machine's work cycle.

WORK IN COMFORT

IN THE SPACIOUS CAB

The cab is designed to enhance comfort and efficiency, providing a quiet, more expansive workspace with user-friendly controls to minimize fatigue, stress, noise, and heat during demanding tasks.



CAB ACCESS

Inclined steps, large opening door, optional remote door opener, and convenient grab handles ease accessibility to the operating space.



OPERATOR ID

Secure machine usage with dedicated Operator IDs. Machine settings are saved separately, increasing shift change efficiency. Easily start machine using the Passcode or optional Bluetooth® key.



GREAT VISIBILITY

Large, wide windows enhance visibility while convex and spot mirrors extend the driver's view on the sides and rear.



COMFORTABLE WORK ENVIRONMENT

Spacious cab with significant legroom and easily adjustable seat and suspension. Optional 4-point seat belt kit with retractors on the lap belt for added comfort, efficiency, and freedom of movement. A left footrest allows for added operator comfort, safety, and machine stability when working in uneven, bumpy operations.



QUIET CAB

Sound-suppression, seals, and viscous cab mounts decrease noise for a quieter work environment.



COMFORTABLE STEERING

The standard HMU steering wheel provides precision control, resulting in excellent comfort and accuracy. An optional seat-mounted electro-hydraulic joystick steering system (replaces the HMU steering wheel) is also available in many regions.

SIMPLE CONTROLS

AT YOUR FINGERTIPS

TOUCHSCREEN DISPLAY

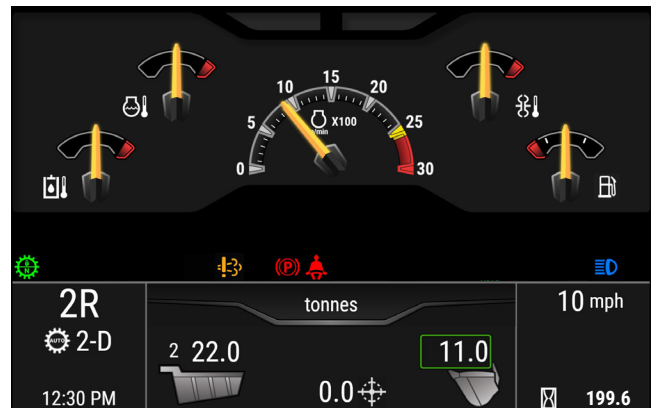
The easy and intuitive interface lets the operator work with confidence and efficiency. It includes Operator ID, machine settings, job aids, maintenance reminders, help functions, security, rearview camera, and integrated Cat Payload. Additionally, operators can instantly access training videos and feature guides before operation using an on-board QR code.



CENTRAL DISPLAY

Featuring easy-to-read analog gauges and LED indicators that allow the operator to quickly monitor critical machine health parameters.

A large text box displays the Cat Payload information as well as gear selection, machine travel speed, time, and hour meter.



KEYPADS

Easy-to-reach backlit keypads on the implement control pod and the A-post provide instant access to many functions and settings. Only active buttons or functions are illuminated, making it very intuitive for the operator.





LOW MAINTENANCE COSTS

Cat wheel loaders are easy to maintain and service, eliminating any potential waste of time or money. Major components are rebuildable, giving the machine a second life and often a third life.

KEY FEATURES SAVING YOU TIME, MONEY, AND ENERGY:

- + Tire Pressure Monitoring System lets operators track pressure via the main display, enhancing performance, ride quality, and cost-efficiency.
- + Maintenance reminders help to synchronize machine maintenance schedule and reduce operation downtime.
- + Convenient access to hydraulic and electrical service centers for easy and safe servicing.
- + Remote Troubleshoot can connect the machine to the dealer service department to help diagnose problems quickly so you can get back to work.
- + Remote Flash works around your schedule to ensure your machine's software is up to date for optimal performance.
- + Optional integrated Autolube extends component and service life.
- + One-piece tilting hood makes engine compartment access fast and easy.

THE CAT® 950 SAVES TIME AND MONEY WITH EASIER AND FASTER SERVICE



**REBUILDABLE
COMPONENTS**



**EASY ACCESS
TO SERVICE CENTERS**



REMOTE TECHNOLOGIES
MANAGE YOUR MACHINE FROM ANYWHERE

DO MORE JOBS

VERSATILE ATTACHMENTS AND COUPLERS

For worksites that demand more, you need a wheel loader that is purpose-built for the job. Cat work tools are engineered to handle all of your specific application needs.



LINKAGE CONFIGURATION*

The proven Z-bar linkage combines digging efficiency with sharp visibility, resulting in excellent excavation, high breakout forces, and production capabilities.

QUICK COUPLERS AND WORK TOOL ATTACHMENTS

A wheel loader equipped with a Cat Fusion™ quick coupler system is a much more versatile machine. Buckets and work tools can be changed without leaving the cab – allowing the machine to quickly move from task to task. Consult your local dealer for availability of a variety of specialty buckets and forks.

Single Life Cutting Edge ground engaging tool (GET) delivers reliable performance and reduces downtime, helping you maximize productivity with fewer replacements and lower maintenance costs.

PERFORMANCE SERIES BUCKETS

Performance Series Buckets use a system-based approach to balance bucket shape with the machine's lift and tilt capacity, weight, and linkage. A variety of work tools and bucket styles are available for a range of applications, including general purpose, flat floor, heavy duty rock, and coal-style buckets.

- + Easy loading
- + Fuel efficient
- + Carry more
- + Lower operating costs
- + Higher productivity

HIGH LIFT LINKAGE

The optional high lift linkage offers increased hinge pin height to load more easily in a variety of applications with any type of bucket or fork.

PURPOSE-BUILT SPECIALTY CONFIGURATIONS*

Maximize your wheel loader's performance and durability in the toughest applications with application-specific arrangements direct from the factory.

Industrial and waste models – guarding and reinforcement protect components when working in transfer stations, recycling depots, scrap yards, and demolition sites.

Forestry model – increases lift and tilt capacities for efficiency and productive log and chip handling in paper, pellet, and sawmills.

Steel mill model – designed for the challenging work environment of steel mills and slag handling applications.

*Not all configurations available in all regions.

TECHNICAL SPECIFICATIONS

See cat.com for complete specifications.

| ENGINE – U.S. EPA TIER 3 EQUIVALENT/EU STAGE IIIA EQUIVALENT | | |
|---|-----------------|------------|
| Engine Model | Cat® C7.1 | |
| Meets Brazil MAR-1 and UN ECE R96 Stage IIIA emission standards, equivalent to U.S. EPA Tier 3 and EU Stage IIIA. | | |
| Engine Power @ 2,100 rpm – ISO 14396 | 186 kW | 249 hp |
| ISO 14396 (DIN) | 253 hp (metric) | |
| Gross Power @ 2,100 rpm – SAE J1995 | 191 kW | 256 hp |
| Net Power @ 2,100 rpm – ISO 9249, SAE J1349 | 172 kW | 231 hp |
| ISO 9249 (DIN) | 235 hp (metric) | |
| Engine Torque @ 1,400 rpm – ISO 14396 | 1236 N·m | 912 lbf-ft |
| Gross Torque @ 1,400 rpm – SAE J1995 | 1257 N·m | 927 lbf-ft |
| Net Torque @ 1,300 rpm – ISO 9249, SAE J1349 | 1170 N·m | 863 lbf-ft |
| Displacement | 7.01 L | |

| ENGINE – U.S. EPA TIER 4 FINAL/EU STAGE V | | |
|---|-----------------|------------|
| Engine Model | Cat C7.1 | |
| Meets U.S. EPA Tier 4 Final, EU Stage V, and Japan 2014 emission standards. | | |
| Engine Power @ 2,100 rpm – ISO 14396 | 186 kW | 249 hp |
| ISO 14396 (DIN) | 253 hp (metric) | |
| Gross Power @ 2,100 rpm – SAE J1995 | 188 kW | 253 hp |
| Net Power @ 2,100 rpm – ISO 9249, SAE J1349 | 172 kW | 231 hp |
| ISO 9249 (DIN) | 235 hp (metric) | |
| Engine Torque @ 1,300 rpm – ISO 14396 | 1231 N·m | 908 lbf·ft |
| Gross Torque @ 1,300 rpm – SAE J1995 | 1242 N·m | 916 lbf·ft |
| Net Torque @ 1,300 rpm – ISO 9249, SAE J1349 | 1170 N·m | 863 lbf·ft |
| Displacement | 7.01 L | |

- Advertised power is tested per the specified standard in effect at the time of manufacture.
- The net power advertised is the power available at the flywheel when the engine is equipped with fan, alternator, air cleaner, and aftertreatment/muffler.
- Cat U.S. EPA Tier 4 Final, EU Stage V, Korea Stage V, China Nonroad Stage IV, Japan 2014 engines are required to use ULSD (ultra-low sulfur diesel fuel with 15 ppm of sulfur or less) and are compatible* with ULSD blended with the following lower-carbon intensity fuels** up to:
 - 20% biodiesel FAME (fatty acid methyl ester)***
 - 100% renewable diesel, HVO (hydrotreated vegetable oil) and GTL (gas-to-liquid) fuels
- Cat engines meeting Brazil MAR-1 and UN ECE R96 Stage IIIA emission standards, equivalent to U.S. EPA Tier 3 and EU Stage IIIA, are compatible* with diesel fuel blended with the following lower-carbon intensity fuels*** up to:
 - 100% biodiesel FAME (fatty acid methyl ester)****
 - 100% renewable diesel, HVO (hydrotreated vegetable oil) and GTL (gas-to-liquid) fuels

Refer to guidelines for successful application. Please consult your Cat dealer or “Caterpillar Machine Fluids Recommendations” (SEBU6250) for details.

* While Caterpillar engines are compatible with these alternative fuels, some regions may not allow their use.

** Tailpipe greenhouse gas emissions from lower-carbon intensity fuels are essentially the same as traditional fuels.

*** Engines with no aftertreatment devices are compatible with higher blends, up to 100% biodiesel (for use of blends higher than 20% biodiesel, consult your Cat dealer).

**** For use of blends higher than 20% biodiesel, consult your Cat dealer.

| WEIGHT | | |
|------------------|-----------|-----------|
| Operating Weight | 18 076 kg | 39,851 lb |

- Weight based on a machine configuration with Z-bar linkage, Bridgestone 23.5R25 VJT L3 radial tires, full fluids, operator, standard counterweight, ride control, cold start, roading fenders, Product Link, front manual differential/open rear axles, powertrain guard, secondary steering, sound suppression, and a 3.1 m³ (4.1 yd³) general purpose bucket with BOCE.

| SOUND | |
|--|-----------|
| Operator Sound Pressure Level (ISO 6396:2008) | 72 dB(A) |
| Exterior Sound Power Level (ISO 6395:2008) | 107 dB(A) |
| Operator Sound Pressure Level (ISO 6396:2008)* | 69 dB(A) |
| Exterior Sound Power Level (ISO 6395:2008)** | 104 dB(A) |

* Including countries that adopt the EU and UK Directives.

** European Union Directive 2000/14/EC and UK Noise Regulation 2001 No. 1701

| OPERATING SPECIFICATIONS | | |
|--|-----------|------------|
| Static Tipping Load – Full 40° Turn – with Tire Deflection | 10 936 kg | 24,110 lb |
| Static Tipping Load – Full 40° Turn – No Tire Deflection | 11 631 kg | 25,642 lb |
| Breakout Force | 152 kN | 34,171 lbf |

- For a machine configuration as defined under “Weight.”

- Full compliance to ISO 14397-1:2007 Sections 1 through 6, which requires 2% verification between calculations and testing.

| AIR CONDITIONING SYSTEM | |
|---|--|
| The air conditioning system on this machine contains the fluorinated greenhouse gas refrigerant R134a or R1234yf. See the label or instruction manual for identification of the gas. | |
| – If equipped with R134a (Global Warming Potential = 1430), the system contains 1.600 kg (3.5 lb) of refrigerant which has a CO ₂ equivalent of 2.288 metric tonnes (2.522 tons). | |
| – If equipped with R1234yf (Global Warming Potential = 0.501), the system contains 1.389 kg (3.1 lb) of refrigerant which has a CO ₂ equivalent of 0.001 metric tonnes (0.001 tons). | |

| BUCKET CAPACITIES | | |
|-------------------|------------|--------------|
| Bucket Range | 2.5-9.9 m³ | 3.3-13.0 yd³ |

STANDARD AND OPTIONAL EQUIPMENT

Standard and optional equipment may vary. Consult your Cat® dealer for details.

| OPERATOR ENVIRONMENT | STANDARD | OPTIONAL |
|--|----------|----------|
| Cab, pressurized, sound suppression | • | |
| Door, remote opening system** | | • |
| EH implement controls, parking brake | • | |
| Footrest | | • |
| HMU steering wheel | | • |
| Steering, joystick | • | |
| Implement joystick (2V, 3V only) | | • |
| CB radio ready | | • |
| Seat, cloth, air suspension | • | |
| Seat, suede/cloth, air suspension, heated | | • |
| Seat, leather/cloth, air suspension, heated/ventilated | | • |
| Keypad, programmable buttons | • | |
| Mirrors, heated | | • |
| Air conditioner, heater, defroster | • | |
| Sun visor, front, retractable | • | |
| Sun visor, rear, retractable | | • |
| Windows, front, laminated | • | |
| ON-BOARD TECHNOLOGIES | STANDARD | OPTIONAL |
| Autodig with Auto Set Tires | • | |
| Operator ID and machine security | • | |
| Application Profiles | • | |
| Job Aids | • | |
| Controls Help and eOMM | • | |
| Cat® Payload | • | |
| Cat Advanced Payload | | • |
| Cat Payload for Trade*** | | • |
| Cat Payload Printer with E-ticket¹ | | • |
| Dispatch for loading¹ | | • |
| Key Features Inform | • | |
| Bucket Carry Display Widget | • | |
| Remote Flash | • | |
| HYDRAULICS | STANDARD | OPTIONAL |
| Implement system, load sensing with variable displacement piston pump | • | |
| Steering system, load sensing with dedicated variable displacement piston pump | • | |
| Ride control, dual accumulators** | • | |
| 3rd and 4th auxiliary functions | | • |
| Quick coupler control | | • |
| ELECTRICAL | STANDARD | OPTIONAL |
| Starting and charging system, 24V | • | |
| Cold start, 120V or 240V | | • |
| Lights: halogen | • | |
| Lights: LED | | • |
| MONITORING SYSTEM | STANDARD | OPTIONAL |
| Front dash with analog gauges, LCD display, and warning lights | • | |
| Primary touchscreen monitor | • | |
| Tire Pressure Monitor | | • |
| Maintenance Reminders | • | |

| POWERTRAIN | STANDARD | OPTIONAL |
|--|----------|----------|
| Cat C7.1 engine | • | |
| Electric fuel priming pump | • | |
| Turbine, air precleaner | | • |
| Radiator, high debris | | • |
| Cooling fan, reversible | | • |
| Axles, open/open differentials** | • | |
| Axles, manual front locks** | • | |
| Axles, auto differential locks front and rear** | • | |
| Axles, ecology drains, AOC ready, extreme temperature seals | | • |
| Axles, oil cooler | | • |
| Transmission, countershaft, automatic powershift | • | |
| Torque converter with lock-up | • | |
| Service brakes, hydraulic, fully enclosed wet disc, wear indicators | • | |
| Park brake, caliper on front axles, spring applied–pressure released | • | |
| Brake pedal neutralizer with decel function | • | |
| LINKAGE | STANDARD | OPTIONAL |
| Standard lift, Z-bar | • | |
| High lift | | • |
| Kickouts: lift and tilt | • | |
| ADDITIONAL EQUIPMENT | STANDARD | OPTIONAL |
| Cat Autolube system | | • |
| Fenders, extensions or roading | | • |
| Biodegradable hydraulic oil | | • |
| Single Life Cutting Edge GET | | • |
| SAFETY | STANDARD | OPTIONAL |
| Seat belt reminder | • | |
| 2-point seat belt | • | |
| 4-point seat belt (kit) | | • |
| Rear vision camera | • | |
| Rear vision camera, dedicated | | • |
| Seat belt indicator lamp | | • |
| Surround vision, dedicated | | • |
| Window cleaning platform, front | | • |
| Collision warning system | | • |
| Collision mitigation system | | • |
| Reverse strobe lights | | • |
| Warning beacon | | • |
| Secondary steering system, electrical** | | • |
| Wheel chocks | | • |
| Cat Command remote control | | • |
| SPECIAL CONFIGURATIONS* | STANDARD | OPTIONAL |
| Auxiliary counterweight | | • |
| Steel mill | | • |
| Waste and industrial | | • |
| Forestry | | • |
| Corrosion resistant | | • |

* Not all configurations available in all regions, subject to availability.

** Standard or optional depending on region. Consult your dealer.

*** Available in Europe and Australia. Country certifications vary. Contact your Cat dealer for more information.

¹Subscription required



オフロード法2014年
基準適合

For more complete information on Cat products, dealer services and industry solutions, visit us on the web at www.cat.com.

© 2025 Caterpillar. All Rights Reserved.

Materials and specifications are subject to change without notice. Featured machines in photos may include additional equipment. See your Cat dealer for available options.

CAT, CATERPILLAR, LET'S DO THE WORK, VisionLink, their respective logos, Fusion, XT, Product Link, HEUI, "Caterpillar Corporate Yellow", the "Power Edge" and Cat "Modern Hex" trade dress as well as corporate and product identity used herein, are trademarks of Caterpillar and may not be used without permission.

www.cat.com www.caterpillar.com

AEXQ4552-00 (11-2025)
Build Number: 14C
(Afr-ME, Eurasia, S Am
[excluding Chile and Colombia],
Aus-NZ, SE Asia, Indonesia)

