

# 395 FS

## FRONT SHOVEL HYDRAULIC EXCAVATOR



---

**Engine Power**  
**Operating Weight**

405 kW (543 hp)  
96 300 kg (212,300 lb)

Cat® C18 engine meets U.S. EPA Tier 4 Final, EU Stage V, Japan 2014 (Tier 4 Final), China Nonroad Stage IV, and Korea Stage V emission standards.





## ROBUST DIGGING AND BREAKOUT FORCE WITH LIGHTNING-QUICK LOADING CYCLES AND RIGOROUS BUCKET FILL

The Cat® 395 Front Shovel Hydraulic Excavator is engineered to tackle the toughest demands of large-scale mining and quarry operations. Built for exceptional durability, this powerhouse machine combines unmatched digging force with fast cycle times that ease bucket penetration.

- + ENGINEERED TO MAXIMIZE PRODUCTIVITY
- + HEAVY-DUTY DURABILITY AND SERVICEABILITY
- + OPTIMIZED FOR THE OPERATOR



# MEET THE CAT® 395Fs

POWER THROUGH EVERY LOAD. CONFIDENCE IN EVERY CYCLE.

For those seeking an excavator that provides power, precision, and reliability in challenging environments, the 395 Front Shovel Hydraulic Excavator is the ultimate solution. Maximize your productivity and efficiency while minimizing downtime and reducing maintenance costs with this indispensable machine.



# ENGINEERED TO PUSH THE LIMITS



## MAXIMIZE PRODUCTIVITY

Features exceptional ground-level digging and breakout strength for optimal material penetration and bucket-fill efficiency.

Bucket compatibility ranges from 5.6 m<sup>3</sup> Severe Duty (SD) to 6.5 m<sup>3</sup> SD, enhancing productivity and profitability.

The robust and adaptable bucket clamp design securely holds a 1.33 m, 7-ton steel drop ball for secondary material handling and secondary breaking applications.

## HEAVY-DUTY DURABILITY AND SERVICEABILITY

The reinforced, durable undercarriage and additional cylinder guards help reduce machine wear and tear while protecting your investment.

Cat Next Generation Excavators have synchronized and extended service intervals, share common parts, and offer exceptional customer service and superior product support, giving you more uptime.

## OPTIMIZED FOR THE OPERATOR

Engineered with a narrow front and equipped with the Next Generation cab on a fixed riser, giving the operator optimal loading visibility.

Operator-oriented in-cab controls are easy to reach and help deliver optimized material penetration, fast loading, and smooth floor clean-up.



# BUILT TO TACKLE

## THE TOUGHEST JOBS

The Cat 395 Front Shovel Hydraulic Excavator is engineered for high-production performance in the harshest mining and quarry environments.

With unmatched digging and breakout forces, lightning-quick loading cycles, and efficient bucket-fill capability, this machine quickly and reliably moves massive volumes of material.

Whether your work demands power, precision, or uptime, the 395 Front Shovel is built to deliver. It's more than a machine, it's your worksite powerhouse.





# UNMATCHED PERFORMANCE

## AND PRODUCTIVITY

### EFFICIENTLY DIG DEEPER AND FASTER

The 395 FS is engineered for maximum material penetration – its aggressive fill capabilities reduce the number of passes, keeping trucks loaded and cycles moving.

Advansys™ bucket tips increase penetration and improve cycle times. Tip changes can be performed quickly with a simple lug wrench, eliminating the need for a hammer or special work tool, thereby enhancing safety and uptime.





## OPTIMIZED FOR THE OPERATOR

The cab is outfitted with an ergonomic seat, touchscreen display, climate control, noise insulation, and vibration reduction, helping reduce fatigue.

## MAXIMIZED CAPABILITY

Engineered with a parallelogram-type front linkage and master cylinder, which allows the operator to maximize machine capability with ease by keeping the bucket parallel to the ground.

## BOOST PRODUCTIVITY AND PROFITABILITY

Compatible with buckets ranging from 6.5 m<sup>3</sup> SD bucket (max density: 1.65 t/m<sup>3</sup>, low impact and abrasion) to 5.6 m<sup>3</sup> SD bucket (max density: 1.85 t/m<sup>3</sup>, high impact and abrasion).

## PREMIUM WORK TASK AND JOBSITE VISIBILITY

Equipped with the Next Gen cab on a fixed riser, allowing the operator to see above the side of the truck body while loading.



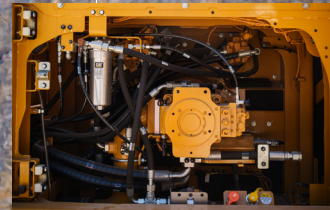
## 1,000 WAYS TO STAY SAFE

Serrated steps, anti-skid plating, and handrails help you avoid slips and trips, a major contributor to workplace injuries. Our anti-skid plates feature over 1,000 individual perforations for optimal traction.



## CENTRALIZED SERVICE POINTS

Save time on daily checks with grouped filters. The engine compartment doors swing wide, allowing for easy access to service points.



## PROTECT YOUR INVESTMENT

The reinforced, durable undercarriage and additional cylinder guards help reduce machine wear and tear.

## DURABLE BY DESIGN, BUILT TO LAST

Caterpillar's engineering integrates thick baffle plates in high-stress areas, oversized track rollers, sealed pins and bushings, and reinforced cylinder rods, all of which contribute to a longer machine life and fewer maintenance headaches.



# SMOOTH, CONFIDENT CONTROL

## EVERY DETAIL DESIGNED FOR THE OPERATOR



USER-FRIENDLY TOUCHSCREEN MONITOR



JOYSTICK SETUP PROVIDES SMOOTH OPERATION



EQUIPPED WITH NEXT GENERATION CAB

## COMFORT THAT REDUCES FATIGUE

The Cat 395 Front Shovel (FS) is built for the toughest worksites, where long shifts and harsh conditions are standard. Inside the Next Generation cab, advanced seat suspension, low cabin vibration, and automatic climate control help the operator stay alert and focused, even in extreme environments.

## CONTROL AT YOUR FINGERTIPS

Smart joystick controls and programmable shortcut keys put your most-used functions right where you need them. The result? Faster cycles, more precise movements, and less wasted effort through the day.

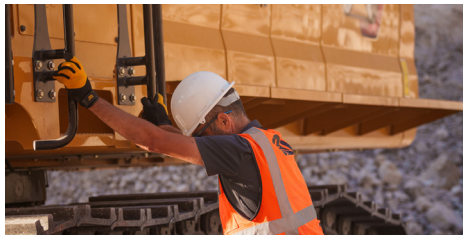
## AN ENVIRONMENT BUILT FOR PRODUCTIVITY

From an ergonomic seat and intuitive touchscreen display to superior noise insulation and vibration reduction, every element of the 395 FS cab is engineered to keep operators comfortable, confident, and performing at their best.



## BUILT-IN PROTECTION

From secure handrails and anti-skid steps to full 360° lighting, the Cat Front Shovel (FS) is designed to keep operators and crews safe on every shift.



SECURE HANDRAILS

## ALL-AROUND AWARENESS

Rear and side cameras come standard, while optional 360° vision and swing alarms give operators clear visibility of their surroundings, reducing risk in busy, high-pressure environments.



REAR AND SIDE CAMERAS

## CONFIDENCE IN ANY CONDITION

A ground-level emergency shutoff quickly stops all engine fuel, while Cat Command remote control technology allows safe, non-line-of-sight operation in hazardous areas. Because when it comes to safety, the 395 FS doesn't just meet expectations, it reinforces them.



GROUND-LEVEL SHUTOFF

# SAFETY YOU CAN COUNT ON

TO ARRIVE SAFELY HOME EVERY DAY





# CAT TECHNOLOGY

## TAKES THE GUESSWORK OUT OF MANAGING YOUR EQUIPMENT

---

Technology on the 395 FS works as hard as the machine itself. The in-cab monitor puts performance data, settings, and even how-to video guides at your fingertips.



### VISIONLINK™

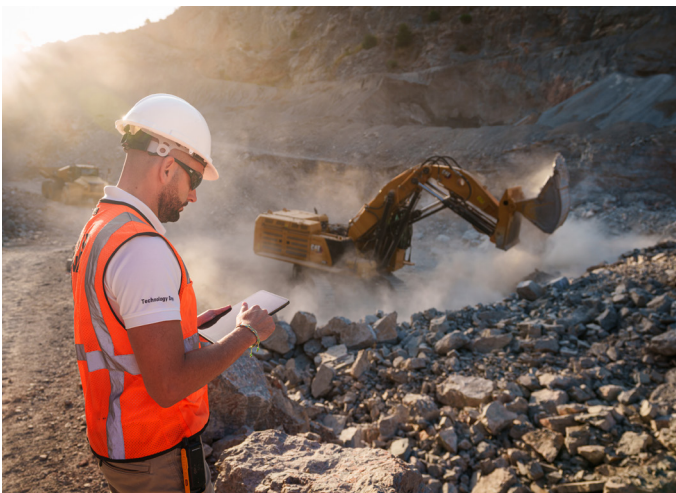
VisionLink™ takes the guesswork out of managing your entire fleet – regardless of size or equipment manufacturer.\* Review equipment data from your desktop or mobile device to maximize uptime and optimize assets. With interactive dashboards, VisionLink makes it easier for operations of all sizes to make informed decisions that lower costs, simplify maintenance, and improve safety and security on your jobsite. With different subscription-level options, your Cat dealer can help you determine what you need to connect your fleet and manage your business.

\* Data field availability can vary by equipment manufacturer. VisionLink subscription required for advanced data features. Availability may vary by region, consult your Cat dealer for more details.



### MACHINE SETUP SIMPLIFICATION

The latest operator oriented User Interface (UI) has been designed to maximize uptime by allowing operators to easily reorder work tool lists and quickly create new work tool combinations. It also eliminates the need to measure up again when changing Cat work tool attachments and makes it manageable for a single person to check and adjust for bucket wear.



### REMOTE TROUBLESHOOT

Remote Troubleshoot allows your Cat dealer to perform diagnostic testing on your connected machine remotely, pinpointing potential issues while the machine is in operation. Remote troubleshooting helps to ensure the technician arrives with the correct parts and tools the first time, eliminating additional trips to save you time and money. Must be within cell range coverage.



# EASY AND ECONOMICAL MAINTENANCE

## SAVE TIME AND MONEY

---

When Cat equipment is properly cared for, owners can expect thousands of working hours. Mindful operation backed by regular maintenance and preventive measures can help keep your Cat machinery working for years.

### REDUCE MAINTENANCE COSTS

Cat Next Generation Excavators share common parts, extended and synchronized service intervals, exceptional customer service, and superior product support.

The Integrated Vehicle Health Management system boosts your productivity with proactive service reminders by alerting the operator with step-by-step service guidance and identifying the necessary parts, ensuring you avoid unnecessary downtime.



### MINIMIZE DOWNTIME

Fuel and engine oil filters are accessible from the upper platform and are synchronized for replacement at 1,000 hours. The latest hydraulic oil filter offers high-quality filtration performance and features anti-drain valves to maintain oil cleanliness after replacement. Additionally, the 3,000-hour extended replacement interval provides enhanced efficiency and convenience.



### SIMPLIFIED SAMPLING

S-O-S<sup>SM</sup> ports with extended sampling intervals are located at ground level, simplifying maintenance and allowing for quick and easy extraction of samples for fluid analysis. Using Cat genuine oil and filters, along with typical S-O-S monitoring, will extend the current service interval, providing you with more uptime.





# VISIBILITY THAT WORKS FOR YOU

SEE MORE. LOAD MORE.

A fixed riser helps operators see above truck beds, enhancing loading precision and improving worksite safety. Coupled with a parallelogram-type linkage, the bucket stays level throughout digging and cleanup, allowing operators to maintain control throughout the cycle.



## TYPICAL PASS MATCH GUIDE

For maximum production and efficiency, we recommend that loading and hauling machines are matched to achieve optimal performance.

### Configuration\*:

Standard variable gauge undercarriage, 4.6 m (15 ft 9 in) Front Shovel (FS) Boom, 3.48 m (11 ft 5 in) FS Stick, 6.5 m<sup>3</sup> (8.5 yd<sup>3</sup>) FS bucket, 650 mm (26 in) double grouser shoes, 15 450 kg (34,060 lb) counterweight

### Passes Required to Fill Trucks to Rated Capacity

| Material Type | Material Density                                   | Cat Articulated Trucks |        |        |     | Cat Off-Highway Trucks |      |      |      |      |      |
|---------------|--|------------------------|--------|--------|-----|------------------------|------|------|------|------|------|
|               |  | 735                    | 740 GC | 740 EJ | 745 | 770G                   | 772G | 773E | 773G | 775G | 777G |
| Earth         | 1600 kg/m <sup>3</sup> (2,700 lb/yd <sup>3</sup> ) |                        | 3-4    |        | 4   | 3-4                    | 4-5  | 5-6  | 5-6  | 6    | 9    |
| Limestone     | 1540 kg/m <sup>3</sup> (2,600 lb/yd <sup>3</sup> ) | 3-4                    | 4-5    | 4      | 4-5 | 4-5                    | 5    | 6    | 6    | 7    | 10   |

\*The indicated pass match reflects the machine configuration, fill factor, and typical material density shown. Changes to machine configurations, fill factors, or material density as well as jobsite-specific factors may influence exact pass match recommendations for your application. Consult your Cat dealer for more information.

### Configuration\*:

Standard variable gauge undercarriage, 4.6 m (15 ft 9 in) Front Shovel (FS) Boom, 3.48 m (11 ft 5 in) FS Stick, 5.2 m<sup>3</sup> (6.8 yd<sup>3</sup>) Heavy Duty (HD) bucket, 650 mm (26 in) double grouser shoes, 15 450 kg (34,060 lb) counterweight

### Passes Required to Fill Trucks to Rated Capacity

| Material Type | Material Density                                   | Cat Articulated Trucks |        |     |        |        |     | Cat Off-Highway Trucks |      |      |      |      |      |
|---------------|--|------------------------|--------|-----|--------|--------|-----|------------------------|------|------|------|------|------|
|               |  | 730                    | 730 EJ | 735 | 740 EJ | 740 GC | 745 | 770G                   | 772G | 773E | 773G | 775G | 777G |
| Earth         | 1600 kg/m <sup>3</sup> (2,700 lb/yd <sup>3</sup> ) |                        |        | 4   | 4-5    | 4-5    | 5   | 4-5                    | 5-6  | 7    | 6-7  | 8    | 11   |
| Limestone     | 1540 kg/m <sup>3</sup> (2,600 lb/yd <sup>3</sup> ) | 4                      | 3-4    | 4-5 | 5-6    | 5      | 5-6 | 5-6                    | 6-7  | 8    | 8    | 9    | 12   |

\*The indicated pass match reflects the machine configuration, fill factor, and typical material density shown. Changes to machine configurations, fill factors, or material density as well as jobsite-specific factors may influence exact pass match recommendations for your application. Consult your Cat dealer for more information.





# MORE THAN CUSTOMER VALUE AGREEMENTS

## BUILT AROUND YOUR SUCCESS

When you buy Cat equipment, you get so much more than the machine. You also get the support of a best-in-class dealer network, backed by a range of flexible solutions, technology, tools, and more.

### CUSTOMER VALUE AGREEMENTS

---

A Customer Value Agreement (CVA) from your Cat dealer helps you do more and worry less. A CVA simplifies machine ownership and maintenance, adds the security of expert dealer support, and gives you peace of mind from effective equipment health management.

### REPAIR OPTIONS

---

A broad range of repair options give you choices that work with your needs, budget, and timeline. Every repair is performed by expert Cat technicians. You'll receive smart repair advice, a timely, accurate quote, and service that gets your machine back into action quickly.

### GENUINE CAT PARTS

---

Genuine Cat parts deliver the highest level of reliability and productivity. Order direct from your Cat dealer or shop online at [parts.cat.com](https://parts.cat.com).

### FINANCIAL SERVICES

---

Count on Cat Financial to provide the best finance and extended protection solutions for your business. For more than 30 years, we have helped our customers succeed through financial service excellence.

### GET BACK TO WORK

Services to help you save time, save money, and get back on the job.

#### CAT INSPECT

Access your equipment data on your mobile device. This easy-to-use app lets you capture inspection data and integrates with your other Cat data systems, so you can keep a close eye on your fleet.

#### HYDRAULICS AND HOSE

Whether you choose new, Cat Reman, exchange, or rebuilt hydraulic components, you'll get expert diagnostics, testing, and contamination control. Cat Hose Service offers hoses and couplings for most makes and models.

#### CERTIFIED REBUILD

Get a full second machine life at a fraction of the cost of buying new. With upgraded features, safety enhancements, and the latest technologies, your old machine will perform even better than it did when it rolled off the line.



# TECHNICAL SPECIFICATIONS

See cat.com for complete specifications.

| POWERTRAIN   |                          |               |
|--|--------------------------|---------------|
| Engine Model   | Cat® C18                 |               |
| Net Power ISO 9249   | 404.4 kW                 | 542 hp        |
| Net Power ISO 9249 (DIN)   | 550 hp (metric)          |               |
| Engine Power ISO 14396   | 405.0 kW                 | 543 hp        |
| Engine Power ISO 14396 (DIN)   | 551 hp (metric)          |               |
| Bore   | 145 mm                   | 6 in          |
| Stroke   | 183 mm                   | 7 in          |
| Displacement   | 18.1 L                   | 1105 in³      |
| Biodiesel capability   | Up to B20 <sup>(1)</sup> |               |
| <ul style="list-style-type: none"><li>• Meets U.S. EPA Tier 4 Final, EU Stage V, Japan 2014 (Tier 4 Final), China Nonroad Stage IV, and Korea Stage V emission standards.</li><li>• Recommended for use up to 4500 m (14,770 ft) altitude with engine power derate above 3000 m (9,840 ft).</li><li>• Advertised power is tested per the specified standard in effect at the time of manufacture.</li><li>• Net power advertised is the power available at the flywheel when the engine is equipped with fan, air intake system, exhaust system and alternator.</li><li>• Engine speed at 1,900 rpm.</li></ul>   |                          |               |
| <sup>(1)</sup> Cat diesel engines are required to use ULSD (ultra-low sulfur diesel fuel with 15 ppm of sulfur or less) and are compatible* with ULSD blended with the following lower-carbon intensity fuels** up to: <ul style="list-style-type: none"><li>✓ 20% biodiesel FAME (fatty acid methyl ester)***</li><li>✓ 100% renewable diesel, HVO (hydrotreated vegetable oil) and GTL (gas-to-liquid) fuels</li></ul> Refer to guidelines for successful application. Please consult your Cat dealer or “Caterpillar Machine Fluids Recommendations” (SEBU6250) for details. <ul style="list-style-type: none"><li>*While Caterpillar engines are compatible with these alternative fuels, some regions may not allow their use.</li><li>** Tailpipe greenhouse gas emissions from lower-carbon intensity fuels are essentially the same as traditional fuels.</li><li>*** Engines with no aftertreatment devices are compatible with higher blends, up to 100% biodiesel (for use of blends higher than 20% biodiesel, consult your Cat dealer).</li></ul> |                          |               |
| SWING MECHANISM  |                          |               |
| Swing Speed*   | 5.64 rpm                 |               |
| Maximum Swing Torque   | 362 kN·m                 | 267,000 lb·ft |
| * For CE-marked machine default value may be set lower.  |                          |               |
| WEIGHTS  |                          |               |
| Major Configuration 1  | 96 300 kg                | 212,300 lb    |
| <ul style="list-style-type: none"><li>• Standard variable gauge undercarriage, 4.6 m (15 ft 9 in) Front Shovel (FS) Boom, 3.48 m (11 ft 5 in) FS Stick, 6.5 m³ (8.5 yd³) FS bucket, 650 mm (26 in) double grouser shoes, 15 450 kg (34,060 lb) counterweight.</li></ul>  |                          |               |
| SERVICE REFILL CAPACITIES  |                          |               |
| Fuel Tank Capacity   | 1220 L                   | 322.3 gal     |
| Cooling System   | 71.0 L                   | 18.8 gal      |
| Engine Oil (with filter)   | 67.0 L                   | 17.7 gal      |
| Swing Drive  | 12.0 L                   | 3.2 gal       |
| Final Drive (each)   | 20.0 L                   | 5.3 gal       |
| Hydraulic System (including tank)  | 740.0 L                  | 195.5 gal     |
| Hydraulic Tank (including suction pipe)  | 432.0 L                  | 114.1 gal     |
| Diesel Exhaust Fluid (DEF) Tank  | 80.0 L                   | 21.1 gal      |

| TRACK   |                                   |                                  |
|---|-----------------------------------|----------------------------------|
| Track Shoes Width   | 650 mm                            | 26 in                            |
| Number of Shoes (each side)   | 47                                |                                  |
| Number of Track Rollers (each side)   | 8                                 |                                  |
| Number of Carrier Rollers (each side)   | 3                                 |                                  |
|   |                                   |                                  |
| DRIVE   |                                   |                                  |
| Gradeability  | 35°/70%                           |                                  |
| Maximum Travel Speed  | 4.6 km/h                          | 2.9 mph                          |
| Maximum Drawbar Pull  | 583 kN                            | 131,064 lbf                      |
|   |                                   |                                  |
| HYDRAULIC SYSTEM  |                                   |                                  |
| Main System – Maximum Flow – Implement  | 1,008 L/min<br>(504 × 2<br>pumps) | 266 gal/min<br>(133 ×2<br>pumps) |
| Swing System – Maximum Flow   | 279 L/min                         | 74 gal/min                       |
| Maximum Pressure – Equipment – Implement  | 32 000 kPa                        | 4,641 psi                        |
| Maximum Pressure – Travel   | 35 000 kPa                        | 5,076 psi                        |
| Maximum Pressure – Swing  | 31 000 kPa                        | 4,496 psi                        |
| Boom Cylinder – Bore  | 180 mm                            | 7 in                             |
| Boom Cylinder – Stroke  | 1415 mm                           | 56 in                            |
| Stick Cylinder – Bore   | 220 mm                            | 9 in                             |
| Stick Cylinder – Stroke   | 1855 mm                           | 73 in                            |
| Bucket Cylinder – Bore  | 180 mm                            | 7 in                             |
| Bucket Cylinder – Stroke  | 1810 mm                           | 71 in                            |
| Master Cylinder – Bore  | 160 mm                            | 6 in                             |
| Master Cylinder – Stroke  | 1938 mm                           | 76 in                            |
|   |                                   |                                  |
| SOUND PERFORMANCE   |                                   |                                  |
| ISO 6395:2008 (external)  | 109 dB(A)                         |                                  |
| ISO 6396:2008 (inside cab)  | 73 dB(A)                          |                                  |
| <ul style="list-style-type: none"><li>• External Sound – The labeled spectator sound power level represents the Guaranteed Value per 2000/14/EC amended by 2005/88/EC, when properly equipped, and is measured according to the test procedures and conditions specified in ISO 6395:2008. The measurements were conducted at 70% of the maximum engine cooling fan speed.</li><li>• Internal Sound – The operator sound pressure level is measured according to the test procedures and conditions specified in ISO 6396:2008 for a cab offered by Caterpillar, when properly installed and maintained and tested with the door and windows closed. The measurements were conducted at 70% of the maximum engine cooling fan speed.</li><li>• Hearing protection may be needed when operating with an open operator station and cab (when not properly maintained or doors/windows open) for extended periods or in a noisy environment.</li></ul> |                                   |                                  |
|   |                                   |                                  |
| AIR CONDITIONING SYSTEM   |                                   |                                  |
| <p>The air conditioning system on this machine contains the fluorinated greenhouse gas refrigerant R134a (Global Warming Potential = 1430). The system contains 1.00 kg of refrigerant which has a CO<sub>2</sub> equivalent 1.430 metric tonne.</p> <p>– If equipped with R1234yf (Global Warming Potential = 0.501), the system contains 1.16 kg (2.56 lb) of refrigerant which has a CO<sub>2</sub> equivalent of 0.001 metric tonnes (0.001 tons).</p>  |                                   |                                  |
|   |                                   |                                  |
| STANDARDS   |                                   |                                  |
| Brakes  | ISO 10265:2008                    |                                  |
| Cab/Operator Protective Guards (OPG) (optional)   | ISO 10262:1998 Level II           |                                  |



# STANDARD AND OPTIONAL EQUIPMENT

See cat.com for complete specifications.

| BOOMS, STICKS AND LINKAGES                           | STANDARD       | OPTIONAL |
|--|----------------|----------|
| 4.6 m (15 ft 9 in) Front Shovel (FS) Boom            | •              |          |
| 3.48 m (11 ft 5 in) FS Stick                         | •              |          |
| CAT TECHNOLOGY                                       | STANDARD       | OPTIONAL |
| Cat Equipment Management:                            |                |          |
| VisionLink™  | • <sup>1</sup> |          |
| Remote Troubleshoot                                  | •              |          |
| ELECTRICAL SYSTEM                                    | STANDARD       | OPTIONAL |
| Maintenance-free 1,400 CCA batteries                 | •              |          |
| Centralized electrical disconnect switch             | •              |          |
| Chassis light  | •              |          |
| LED boom and cab lights                              | •              |          |
| 1,800 lumen LED premium surround lights              | •              |          |
| ENGINE   | STANDARD       | OPTIONAL |
| Three selectable modes: Power, Smart, Eco            | •              |          |
| Up to 4500 m (14,760 ft) altitude capability         | •              |          |
| Automatic engine speed control                       | •              |          |
| 95 Amp alternator                                    | •              |          |
| Remote disable                                       | •              |          |
| Double element air filter with integrated precleaner | •              |          |
| Hydraulic reverse cooling fan                        | •              |          |
| Three vertical side-by-side cooling system           | •              |          |
| 52° C (126° F) high-ambient cooling capacity         | •              |          |
| Cold start block heaters                             | •              |          |
| -32° C (-25° F) cold start capability                | •              |          |
| HYDRAULIC SYSTEM                                     | STANDARD       | OPTIONAL |
| Boom and stick regeneration circuits                 | •              |          |
| Electronic main control valve                        | •              |          |
| Dedicated closed loop swing circuit                  | •              |          |
| Automatic hydraulic oil warmup                       | •              |          |
| Automatic swing parking brake                        | •              |          |
| Anti-reaction valve                                  | •              |          |
| High performance hydraulic return filter             | •              |          |
| Two speed travel                                     | •              |          |
| Bio hydraulic oil capability                         | •              |          |

| SAFETY AND SECURITY                              | STANDARD | OPTIONAL |
|--|----------|----------|
| Caterpillar One Key security system              | •        |          |
| Lockable external tool/storage box               | •        |          |
| Lockable door, fuel, and hydraulic tank locks    | •        |          |
| Lockable fuel drain compartment                  | •        |          |
| Lockable disconnect switch                       | •        |          |
| Service platforms with anti-skid plate           | •        |          |
| Full handrail mount on platform                  | •        |          |
| Mirror package                                   | •        |          |
| Signaling/warning horn                           | •        |          |
| Travel alarm                                     | •        |          |
| Swing alarm                                      |          | •        |
| Ground-level secondary engine shutoff switch     | •        |          |
| Rearview and right-side-view cameras             | •        |          |
| 360° visibility                                  | •        |          |
| Inspection lighting                              | •        |          |
| Walkway  | •        |          |
| SERVICE AND MAINTENANCE                          | STANDARD | OPTIONAL |
| Integrated vehicle health management system      | •        |          |
| Auto lube ready                                  | •        |          |
| Reversing cooling fan                            | •        |          |
| Grouped location for engine oil and fuel filters | •        |          |
| Fast-fill fuel system                            | •        |          |
| S•O•S <sup>SM</sup> ports                        | •        |          |
| QuickEvac™ maintenance ready                     | •        |          |
| Electric refueling pump with auto shutoff        | •        |          |
| UNDERCARRIAGE AND STRUCTURES                     | STANDARD | OPTIONAL |
| Standard variable gauge undercarriage            | •        |          |
| 650 mm (26 in) double grouser track shoes        | •        |          |
| Grease lubricated track                          | •        |          |
| Two-piece full-length track guiding guards       | •        |          |
| Swivel guard                                     | •        |          |
| HD bottom guards                                 | •        |          |
| HD travel motor guards                           | •        |          |
| 15 450 kg (34,060 lb) counterweight              | •        |          |
| Towing eye on base frame                         | •        |          |

<sup>1</sup>Provides core telematics data to manage health, maintenance insights, and condition monitoring. Other plans available for more comprehensive data reporting. Consult your Cat dealer for details.



# A LEGENDARY LEGACY

THAT LEADS



Founded in 1925, Caterpillar established the standard for tractors and construction equipment from the outset. Over the years, the company's leaders have gained a great deal of knowledge about what works and what doesn't.

Caterpillar has grown alongside its customers, developing new products for hardworking individuals who want to push the limits. With that history comes innovation, change, creation, and learning.

Caterpillar has partnerships across multiple industries and companies, continually developing and refining its understanding of how equipment should operate.

**OUR COMMITMENT TO DESIGNING AND BUILDING THE WORLD'S BEST EQUIPMENT IS EVIDENT IN EVERY SINGLE PRODUCT.**

For more complete information on Cat products, dealer services and industry solutions, visit us on the web at [www.cat.com](http://www.cat.com).

©2025 Caterpillar. All Rights Reserved.

Materials and specifications are subject to change without notice. Featured machines in photos may include additional equipment. See your Cat dealer for available options.

CAT, CATERPILLAR, LET'S DO THE WORK, VisionLink, their respective logos, Advansys, S•O•S, QuickEvac, "Caterpillar Corporate Yellow," the "Power Edge" and Cat "Modern Hex" trade dress as well as corporate and product identity used herein, are trademarks of Caterpillar and may not be used without permission.

AEXQ4416-01 (11-2025)  
Replaces AEXQ4416-00  
Build Number: 07H  
(Europe, N Am)

