

325

HYDRAULIC EXCAVATOR



Engine Power

ISO 14396

129.4 kW (174 hp)

ISO 14396 (DIN)

176 hp (metric)

Operating Weight

26 400 kg (58,200 lb)

Cat® C4.4 engine emits equivalent to U.S. EPA Tier 3 and EU Stage IIIA.



THE CAT[®] 325

COMPACT RADIUS DESIGN

The Cat[®] 325 Excavator delivers powerful performance with easy-to-use technology – like Cat Grade with 2D, Grade Assist, Lift Assist, and Payload – all standard to help operators work fast and accurate.

Its compact radius design fits tight spaces, while the optional blade speeds up cleanup and leveling. With a fuel-efficient power system, extended service intervals, and an optional heavy counterweight for added lift, the 325 is built to help cut your cost per unit and excel in medium to heavy-duty jobs



NEXT GENERATION EXCAVATORS

Cat next generation excavators offer you more choices than ever for your business.

- + MORE MODEL OPTIONS
- + MORE STANDARD TECHNOLOGIES
- + MORE PRICE POINTS

Ready to help you make your business stronger, Cat next generation excavators give you solutions to get work done at a low cost – boosting your profitability.



LOW FUEL CONSUMPTION

The machine's electro-hydraulic pump and main control valve are designed to work together for optimal power and efficiency, giving you the performance you need without wasting fuel. Smart Mode automatically adjusts engine power to match hydraulic demands, helping keep fuel consumption low. And with the Auto Reversing E-fan system, your cooling system stays cleaner longer – so you can work more and maintain less.

HIGH PERFORMANCE

Boost your productivity with built-in technology that comes standard. A heavy counterweight enhances lifting capability, while the optional blade helps make backfilling quick and easy – plus it helps keep the machine stable when working on slopes.

LOW MAINTENANCE COSTS

Spend less time on maintenance and more time getting work done. With long-lasting fuel, hydraulic oil, and air filters – plus no pilot or case drain filters to replace – you'll reduce overall filter changes throughout the life of your machine. Daily checks are safe and easy too, thanks to a ground-level engine oil check that keeps operators firmly on the ground.



CAT TECHNOLOGY

GETS JOBS DONE FASTER
WITH LESS REWORK

Onboard Cat technology gives you the edge. Operators of all experience levels will dig, load, and grade with more confidence, speed, and accuracy. The result? Better productivity and lower costs.

STANDARD, SIMPLE-TO-USE TECHNOLOGIES INCLUDE:

CAT GRADE WITH ASSIST

Cat Grade with Assist adds semi-autonomous digging to help boost operator efficiency. It automates boom, stick, and bucket movements to deliver more accurate cuts with less effort. The operator simply sets the depth and slope in the monitor and activates single-lever digging. It enables operators of all skill levels to work more confidently, efficiently, and productively in most digging, sloping, leveling, fine grading, trenching, and loading jobs.

CAT GRADE WITH 2D

Cat Grade with 2D helps excavator operators work more efficiently in a wide variety of applications.* Delivering real-time guidance for accurate vertical and horizontal control, Grade with 2D helps to ensure that cuts and fills are made to exact specifications – without under or overcutting.

CAT PAYLOAD

Cat Payload provides operators with on-the-go weighing to help them hit precise load targets and avoid overloading, underloading, or misloading materials. Combine Payload with VisionLink™ productivity** to analyze jobsites and individual assets for remote management of production targets and key metrics.

AVAILABLE OPTIONAL UPGRADES INCLUDE:

CAT GRADE WITH 3D

Cat Grade with 3D helps operators grade more quickly, accurately, and efficiently, improving productivity.* It incorporates GNSS technology and RTK positioning guidance to streamline the grading process for complex designs commonly encountered on large infrastructure and commercial projects. This system allows operators to work confidently, eliminating guesswork while cutting and filling to precise specifications.

CAT GRADE 3D READY

Cat Grade 3D Ready consists of the hardware required for the Grade with 3D system, all installed and tested from the factory. This option provides an easier upgrade path for customers who want to add Grade with 3D after their initial purchase. To activate, contact your Cat dealer to purchase the 3D software licenses. Licenses can be installed remotely or manually loaded onto the machine.

CAT OPERATOR COACHING

Cat Operator Coaching allows operators of all experience levels to improve their efficiency and productivity. With tips and data at their fingertips, operators can track and improve their productivity through everyday work on the jobsite and prevent unnecessary machine wear and tear.

* Compared with traditional grading methods

**Cat Payload for excavators is not legal for trade. VisionLink subscription required. Availability may vary by region. Consult your Cat dealer for more details.

CAT EQUIPMENT MANAGEMENT TECHNOLOGY TAKES THE GUESSWORK OUT OF MANAGING YOUR EQUIPMENT

Cat equipment management telematics technology helps take the complexity out of managing your jobsites – by gathering data generated by your equipment, materials, and people and serving it up to you in customizable formats.

VISIONLINK™

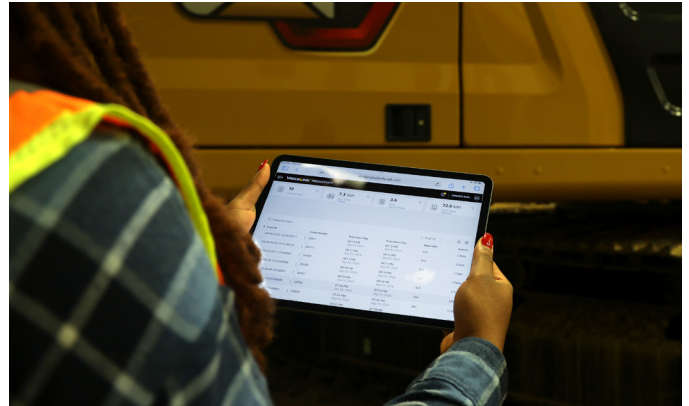
VisionLink provides actionable data insights for all assets – regardless of fleet size or equipment manufacturer.* Review equipment data from your desktop or mobile device to maximize uptime and optimize assets. Equipment management features provide up-to-date asset tracking of your entire fleet. You can track asset location, operating hours, fuel level, health issues, and overall utilization. Monitor equipment health with fault codes, fluid analysis, and inspection due dates. It's all about making informed, data-based decisions to help reduce operating costs. Productivity management features enable you to analyze overall jobsite performance. You'll be able to track tonnage moved, production targets, and payload, as well as Grade 3D and compaction data. These vital metrics help you to reduce costs and improve jobsite operational efficiency.



REMOTE SERVICES**

Remote Troubleshoot allows your Cat dealer to perform diagnostic testing on your connected machine remotely, pinpointing potential issues while the machine is in operation. Remote troubleshooting helps to ensure the technician arrives with the correct parts and tools the first time, eliminating additional trips to save you time and money.

Remote Flash allows you to update onboard software without a technician being present, allowing you to initiate software updates when convenient, increasing your overall operating efficiency.



CAT INSPECT

Cat Inspect is a mobile application that allows you to easily perform digital preventative maintenance checks, inspections, and daily walkarounds.

The app includes machine-specific Preventive Maintenance (PM) checklists to perform service intervals as recommended in the Operation and Maintenance Manual. Inspections can easily be integrated with other Cat data systems like VisionLink, so you can keep a close eye on your fleet.



Caterpillar releases products, services and technologies in each region at different time intervals. Please verify with your local Cat dealer for technology availability and specifications

*Data field availability can vary by equipment manufacturer. VisionLink subscription required for advanced data features. Availability may vary by region, consult your Cat dealer for more details.

**Must be within cell range coverage

CAB TAKES THE HARD OUT OF WORK

Sites where excavators typically work are rugged and challenging. That's why it's important that the 325 cab protects the operator as much as possible from the fatigue, stresses, sounds, and temperatures of the job.



SEAT AND JOYSTICK CONSOLE REDUCE FATIGUE

Comfort and efficiency of movement keep operators productive and alert all shift long. The standard seat is wide and adjustable for operators of virtually any size.



TOUCHSCREEN MONITOR

Most machine settings can be controlled through the high-resolution 254 mm (10 in) touchscreen monitor. It offers 42 languages and is easy to reach from the seat – no twisting or turning.



SMART SETTINGS

Smart mode automatically adjusts power to meet work demand with maximum fuel efficiency. Auto dig boost increases power by up to 8% for better bucket penetration, shorter cycle times, and greater payloads.* Auto heavy lift increases power by up to 8% exactly when you need it for as long as you need it.*



CUSTOMIZABLE JOYSTICKS

Personalize joystick pattern and response through the monitor; use operator ID to save and restore those settings at login. Make moving the excavator much easier with Cat Stick Steer. Simply push a button and use one hand to travel and turn instead of both hands or feet on levers or pedals. Adding an auxiliary relay allows you to power on or turn off a CB radio, beacon light, and even a dust suppression watering system without taking your hands off the joysticks.



KEYLESS PUSH START

The 325 uses a keyless push-button engine start. This adds security for the machine by using operator ID codes to limit and track machine access. Codes can be entered manually or via an optional Bluetooth key fob.

*Auto Dig Boost and Auto Heavy Lift calculations are based on 380 bar (boost pressure) divided by 350 bar (standard pressure).



**A QUIET, SAFE WORKSPACE
BUILDS OPERATOR CONFIDENCE**

CAB HELPS KEEP YOU SAFE

The ISO-certified rollover protective structure (ROPS) cab is sound-suppressed and sealed. The windows and lower front profile of the machine give outstanding visibility to the work area without the strain of constantly leaning forward.

ALL-AROUND VISIBILITY

Standard rearview and right-hand-sideview cameras keep operators aware of their surroundings at all times. An optional 360° visibility feature is also available.

EASY ACCESS, STORAGE, AND CONNECTIVITY

Convenience features include Bluetooth® integrated radio, USB ports for charging and phone connectivity, 12V DC outlets and AUX port, storage in rear, overhead, and console compartments, and cup and bottle holders.



SAFELY HOME EVERY DAY

CAT DETECT PEOPLE DETECTION

People working near heavy equipment on a jobsite risk being struck by a machine. Although machines are designed to provide maximum operator visibility, constantly monitoring their surroundings can be difficult. Optional Cat Detect – People Detection for excavators is an intelligent vision camera system that alerts operators when someone enters the machine's hazard zone.*

LIFT ASSIST

Cat Lift Assist is an excavator safety feature that quickly calculates the actual load being lifted and compares it to the rated load the excavator is capable of handling. Visual and auditory alerts inform operators if they are within a safe working range or if they need to take action to avoid tipping.

* The system may not detect personnel in certain circumstances, such as fast swing speeds, people lying down or crouching, or when cameras are impaired by low light conditions (dusk, dawn, overcast), inclement weather (snow, rain, fog), or other similar conditions. For limitations of use, refer to the operation and maintenance manual.

GROUND-LEVEL DAILY MAINTENANCE

Daily maintenance checks can be performed with 100% of the points accessible from ground level, making maintenance faster, easier, and safe. Checkpoints include the engine oil dipstick, fuel water separator, fuel tank water and sediment drains, and cooling system coolant level check.

COMPACT RADIUS

SIZED RIGHT FOR TIGHT QUARTERS WORK



WORK WITH CONFIDENCE

The 325's compact radius design makes it ideal for working in space-restricted areas like road jobs with lane closures and next to buildings or other structures you'd like to keep out of harm's way.

The 325 gives you maximum full upper frame turning radius, while providing solid lifting performance. The reduced full body 360° turning radius makes it ideally suited to work in tight areas, including a single traffic lane.

WORK WITH POWER

Unlike a standard radius machine, the 325's boom cylinders are positioned in a way that maximizes lifting performance and short turning radius.





LOW MAINTENANCE COSTS

Keep your machine running longer with less hassle. Extended-life fuel, hydraulic oil, and air filters – along with the elimination of pilot and case drain filters – mean less replacements and low maintenance costs over time. Plus, a convenient ground-level engine oil check makes your daily inspections fast and safe.

KEY MAINTENANCE COST REDUCTIONS INCLUDE:

- + Consolidated filter locations to reduce service time.
- + Oil and fuel filters with extended maintenance intervals.
- + Advanced air filter with double the dust holding capacity of the previous filter.

SERVICE REMINDERS MADE EASY

Boost productivity with proactive service reminders. Our integrated vehicle health management system alerts the operator with step-by-step service guidance, along with parts needed, so you don't experience any unnecessary downtime.



SMART FLEET MANAGEMENT **STAY CONNECTED. STAY AHEAD.**

Managing your fleet shouldn't slow you down. The Cat 325 comes equipped with technology, support, and services that put you in control, helping you make better decisions, reduce risk, and maximize uptime.



CONNECTED INSIGHTS

VisionLink wirelessly connects you to your equipment, delivering real-time insights into machine health, fuel use, and productivity. Access data anytime, anywhere – whether from your desktop, tablet, or mobile device.

With Cat technology, service agreements, and the industry's strongest dealer network, you'll have the tools and support to keep your business moving forward with confidence.

PROTECT YOUR INVESTMENT

Customer Value Agreements (CVAs) and Extended Protection Plans (EPPs) help you control costs, minimize risk, and keep your machine performing at its best.

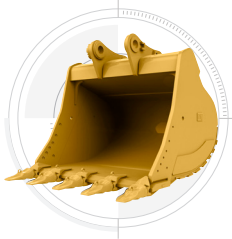
DEALER SUPPORT

Your Cat dealer is your partner for the long haul – offering expert advice on machine selection, operator training, preventive maintenance, rebuilds, and everything in between.

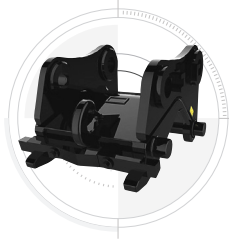
INCREASE YOUR PRODUCTIVITY AND PROFIT WITH CAT ATTACHMENTS

You can easily expand the performance of your machine by utilizing any of the variety of Cat attachments. Each Cat attachment is designed to fit the weight and horsepower of Cat excavators for improved performance, safety, and stability.

BUCKETS



QUICK COUPLERS



GRAPPLES



TILTROTATOR



MULTI-PROCESSORS



HYDRAULIC HAMMERS



PREVENT HAMMER WEAR AND TEAR

Protect your hammer tool from overheating and rapid wear. Auto hammer stop warns you after 15 seconds of continuous firing and then automatically shuts it off after 30 seconds – all to extend the tool's service life.

ATTACHMENT TRACKING MADE EASY

The Cat PL161 attachment locator is a Bluetooth device designed to let users know where their attachments are across all worksites, reduce the number of lost attachments, and plan for attachment maintenance and replacement.

Save more time and energy with the available work tool recognition feature.* A simple shake of the attached tool confirms its identity and ensures all the attachment settings (pressure, flow, and dimensions) are correct so you can work quickly and efficiently.

The PL161 integrates easily into VisionLink for full fleet management of machines and attachments from one smartphone or tablet dashboard to view location and tracking details.

DO HARD-TO-REACH WORK

With 360° rotation and 40° side-to-side tilting action, a Cat tiltrotator will help you get complex work done faster. This system upgrade from the factory allows the tool to work with Cat 2D Grade, Assist, Payload, and E-Fence.

It includes factory-fit joysticks, but uses the standard cab monitor to display the tool and engage its SecureLock™ so you don't need to spend money on an extra monitor. It also works seamlessly with other brands with no additional hardware required. All you have to do is simply select "Third Party Tiltrotator System Installation" in the monitor, do the calibration, and get to work.

*Work tool recognition is available on select excavator models. Automated attachment settings must be enabled within each machine configuration. Consult your Cat dealer for details.

TECHNICAL SPECIFICATIONS

See cat.com for complete specifications.

ENGINE			
Engine Model	Cat® C4.4		
Engine Power			
ISO 14396	129.4 kW	174 hp	
ISO 14396 (DIN)	176 hp (metric)		
Net Power			
ISO 9249	128.5 kW	172 hp	
ISO 9249 (DIN)	175 hp (metric)		
Bore	105 mm	4 in	
Stroke	127 mm	5 in	
Displacement	4.4 L	269 in ³	
Biodiesel Capability	up to B20 ⁽¹⁾		
<ul style="list-style-type: none"> • Cat C4.4 engine emits equivalent to U.S. EPA Tier 3 and EU Stage IIIA. • Advertised power is tested per the specified standard in effect at the time of manufacture with engine speed at 2,200 rpm. • Net power advertised is the power available at the flywheel when the engine is equipped with fan, air intake system, exhaust system and alternator. 			
⁽¹⁾ Cat engines are compatible with diesel fuel blended with the following lower-carbon intensity fuels** up to:			
✓ 100% biodiesel FAME (fatty acid methyl ester)*			
✓ 100% renewable diesel, HVO (hydrogenated vegetable oil) and GTL (gas-to-liquid) fuels			
Refer to guidelines for successful application. Please consult your Cat dealer or "Caterpillar Machine Fluids Recommendations" (SEBU6250) for details.			
*For use of blends higher than 20% biodiesel, consult your Cat dealer.			
**Tailpipe greenhouse gas emissions from lower-carbon intensity fuels are essentially the same as traditional fuels.			
HYDRAULIC SYSTEM			
Main System – Maximum Flow – Implement	429 L/min (214.5 × 2 pumps)	113 gal/min (56.5 × 2 pumps)	
Maximum Pressure – Equipment – Implement	35 000 kPa	5,075 psi	
Maximum Pressure – Equipment – Lift Mode	38 000 kPa	5,510 psi	
Maximum Pressure – Travel	35 000 kPa	5,075 psi	
Maximum Pressure – Swing	27 500 kPa	3,990 psi	
SWING MECHANISM			
Swing Speed	11.12 rpm		
Maximum Swing Torque	82 kN-m	60,480 lbf-ft	
MACHINE WEIGHTS			
Operating Weight	26 400 kg	58,200 lb	
Long undercarriage, Heavy Duty (HD) Reach boom, HD R2.9 m (9'6") stick, HD 1.19 m ³ (1.56 yd ³) bucket, 600 mm (24") HD triple grouser shoes, 4900 kg (10,800 lb) counterweight and blade.			
Operating Weight	27 600 kg	60,800 lb	
Long undercarriage, Reach boom, R2.9 m (9'6") stick, HD 1.19 m ³ (1.56 yd ³) bucket, 600 mm (24") HD triple grouser shoes, 8300 kg (18,300 lb) counterweight.			

SERVICE REFILL CAPACITIES			
Fuel Tank	313 L	82.7 gal	
Cooling System	24 L	6.3 gal	
Engine Oil (with filter)	15 L	4.0 gal	
Swing Drive	5.5 L	1.5 gal	
Final Drive (each)	4.5 L	1.2 gal	
Hydraulic System (including tank)	230 L	60.8 gal	
Hydraulic Tank (including suction pipe)	111 L	29.3 gal	

DIMENSIONS			
Boom	Reach 5.7 m (18'8")		
Stick	Reach 2.9 m (9'6")		
Bucket	HD 1.19 m³ (1.56 yd³)		
Undercarriage	Long		
Shipping Height (top of cab)	3080 mm	10'1"	
Handrail Height	3190 mm	10'6"	
Shipping Length	8890 mm	29'2"	
Shipping Length (with blade)	9590 mm	31'6"	
Tail Swing Radius	1810 mm	5'11"	
Counterweight Clearance	1020 mm	3'4"	
Ground Clearance	440 mm	1'5"	
Track Length	4460 mm	14'7"	
Length to Center of Rollers	3650 mm	12'0"	
Track Gauge	2380 mm	7'10"	
Transport Width – 600 mm (24") shoes	2980 mm	9'9"	

WORKING RANGES AND FORCES			
Boom	Reach 5.7 m (18'8")		
Stick	Reach 2.9 m (9'6")		
Bucket	HD 1.19 m³ (1.56 yd³)		
Undercarriage	Long		
Maximum Digging Depth	6700 mm	22'0"	
Maximum Reach at Ground Level	9780 mm	32'1"	
Maximum Cutting Height	10 970 mm	36'0"	
Maximum Loading Height	7900 mm	25'11"	
Minimum Loading Height	2980 mm	9'9"	
Maximum Depth Cut for 2440 mm (8 ft) Level Bottom	6520 mm	21'5"	
Maximum Vertical Wall Digging Depth	4880 mm	16'0"	
Bucket Digging Force (ISO)	150 kN	33,720 lbf	
Stick Digging Force (ISO)	106 kN	23,830 lbf	

AIR CONDITIONING SYSTEM			
The air conditioning system on this machine contains the fluorinated greenhouse gas refrigerant R134a (Global Warming Potential = 1430). The system contains 0.8 kg (1.8 lb) of refrigerant which has a CO ₂ equivalent of 1.144 metric tonnes (1.261 tons).			

STANDARD AND OPTIONAL EQUIPMENT

Standard and optional equipment may vary. Consult your Cat dealer for details.

BOOMS AND STICKS	STANDARD	OPTIONAL	UNDERCARRIAGE AND STRUCTURES	STANDARD	OPTIONAL
5.7 m (18'8") Reach boom		•	Tie-down points on base frame		•
5.7 m (18'8") HD Reach boom		•	Grease lubricated track		•
2.9 m (9'6") Reach stick		•	Segmented track guiding guards		•
2.9 m (9'6") HD Reach stick		•	HD bottom guards		•
			HD travel motor guards		•
CAB	STANDARD	OPTIONAL	4900 kg (10,800 lb) counterweight		•
Rollover Protective Structure (ROPS)	•		8300 kg (18,300 lb) counterweight		•
Operator Protective Guards (OPG)		•	600 mm (24") triple grouser track shoes		•
Heated air-suspension seat	•		700 mm (28") triple grouser track shoes		•
High-resolution 254 mm (10 in) LCD touchscreen monitor	•		790 mm (31") triple grouser track shoes		•
			2980 mm (9'9") blade		•
CAT TECHNOLOGIES	STANDARD	OPTIONAL	3170 mm (10'5") blade		•
VisionLink™	•		ELECTRICAL SYSTEM	STANDARD	OPTIONAL
Remote Flash	•		Programmable time-delay LED working lights	•	
Remote Troubleshoot	•		LED chassis light, left-hand/right-hand boom lights, cab lights	•	
Cat Grade with 2D	•		SERVICE AND MAINTENANCE	STANDARD	OPTIONAL
Cat Grade with 3D (Single or dual GNSS)		•	S•O•S SM ports	•	
Cat Grade 3D Ready		•	Ground-level and platform-level engine oil dipsticks	•	
Cat Assist	•		Electric refueling pump with auto shutoff		•
Cat Payload	•		Integrated vehicle health management system	•	
Cat Advanced Payload		•	SAFETY AND SECURITY	STANDARD	OPTIONAL
Operator Coaching		•	2D E-Fence	•	
			Rearview camera	•	
ENGINE	STANDARD	OPTIONAL	Right-side-view camera	•	
Three selectable modes: Power, Smart, Eco	•		360° visibility		•
One-touch low idle with automatic engine speed control	•		Lift assist	•	
Auto engine idle shutdown	•		Ground-level engine shutoff switch	•	
50° C (122° F) high-ambient cooling capacity with derate	•		Right-hand handrail and handhold	•	
-18° C (0° F) cold start capability	•		Signaling/warning horn	•	
-32° C (-25° F) cold start capability		•	Inspection lighting		•
Double element air filter with integrated precleaner	•		HYDRAULIC SYSTEM	STANDARD	OPTIONAL
			Boom and stick regeneration circuits	•	
			Auto warm up	•	
			Auto two-speed travel	•	
			Boom and stick drift reduction valve	•	
			Auto dig boost	•	
			Hammer return filter circuit		•

Not all features are available in all regions. Please check with your local Cat dealer for specific offering availability in your area.

For additional information and additional regional offerings, refer to the Technical Specifications brochure available at www.cat.com or your Cat dealer.

For more complete information on Cat products, dealer services and industry solutions, visit us on the web at www.cat.com.

Materials and specifications are subject to change without notice. Featured machines in photos may include additional equipment. See your Cat dealer for available options.

© 2025 Caterpillar. All Rights Reserved. CAT, CATERPILLAR, LET'S DO THE WORK, their respective logos, VisionLink, S•O•S, Product Link, "Caterpillar Corporate Yellow", the "Power Edge" and Cat "Modern Hex" trade dress as well as corporate and product identity used herein, are trademarks of Caterpillar and may not be used without permission. www.cat.com www.caterpillar.com

AEXQ4417-00 (10-2025)
Build Number: 07H
(Aus-NZ)

