

MEDIUM AND LARGE PERFORMANCE LINE

VIBRATORY SOIL COMPACTORS



CS11, CP11	11 T
CS12, CP12	12 T
CS14, CP14	14 T
CS16, CP16	16 T
CP17	17 T
CS19	19 T
CS20	20 T

Compaction Width 2134 mm (84 in)

CS11, CP11, CS20 – Engine meets Brazil MAR-1 emission standards, equivalent to U.S. EPA Tier 3 and EU Stage IIIA.

CS12, CP12, CS14, CP14, CS16, CP16, CP17, CS19 – Engine emits equivalent to U.S. EPA Tier 3 and EU Stage IIIA.

Model availability and configurations may vary by region. Please check with your Cat® dealer for specific offerings and availability in your area.



CAT® VIBRATORY SOIL COMPACTORS

PRODUCTIVE. RELIABLE. DURABLE.

CAT® VIBRATORY SOIL COMPACTORS

are evidence of our world-class engineering and manufacturing know-how for built-in quality, reliability, and durability. Performance-boosting technology along with a wide range of standard machine features help enhance operator productivity and efficiency.



CS11 CS12 CS14 CS16 CS19 CS20



CS54B



CS56B



CS68B



CS74B



CS78B



CS79B

CP11 CP12 CP14 CP16 CP17



CP54B



CP56B



CP68B



CP74B



CP76B



Model availability and configurations may vary by region. Please check with your Cat dealer for specific offerings and availability in your area.

DIFFERENT NAME, SAME PERFORMANCE.

Updated names are part of an effort to make all Cat vibratory soil compactor model names simpler. The Cat vibratory soil compactor range has been renamed to identify the weight of the machines in metric tonnes (tons), and no more series letter modifiers like "B." While the name may be a little different, Cat vibratory soil compactors continue to provide the same great performance, productivity and durability that you depend on day after day.



LOW OPERATING COSTS

Eco-mode, extended service intervals and a hitch with sealed-for-life bearings that do not require routine maintenance help keep your operating and maintenance costs low.

INCREASE EFFICIENCY WITH COMPACTION TECHNOLOGY

On-board compaction measurement technology indicates when specifications are met helping to eliminate guesswork, reduce unnecessary passes and minimize rework.

FOCUSED ON VISIBILITY AND COMFORT

A rear vision camera enhances visibility around the machine and a pivoting seat with integrated controls and tiltable steering console provide an ergonomic work environment.

QUALITY COMPACTION

HIGH-PERFORMANCE DESIGN

Optimal weight and amplitude help Cat Vibratory Soil Compactors reach target density quickly. Built-in, automated features aid operators in consistently producing uniform, high-quality compaction results.

RELIABLE VIBRATORY SYSTEM

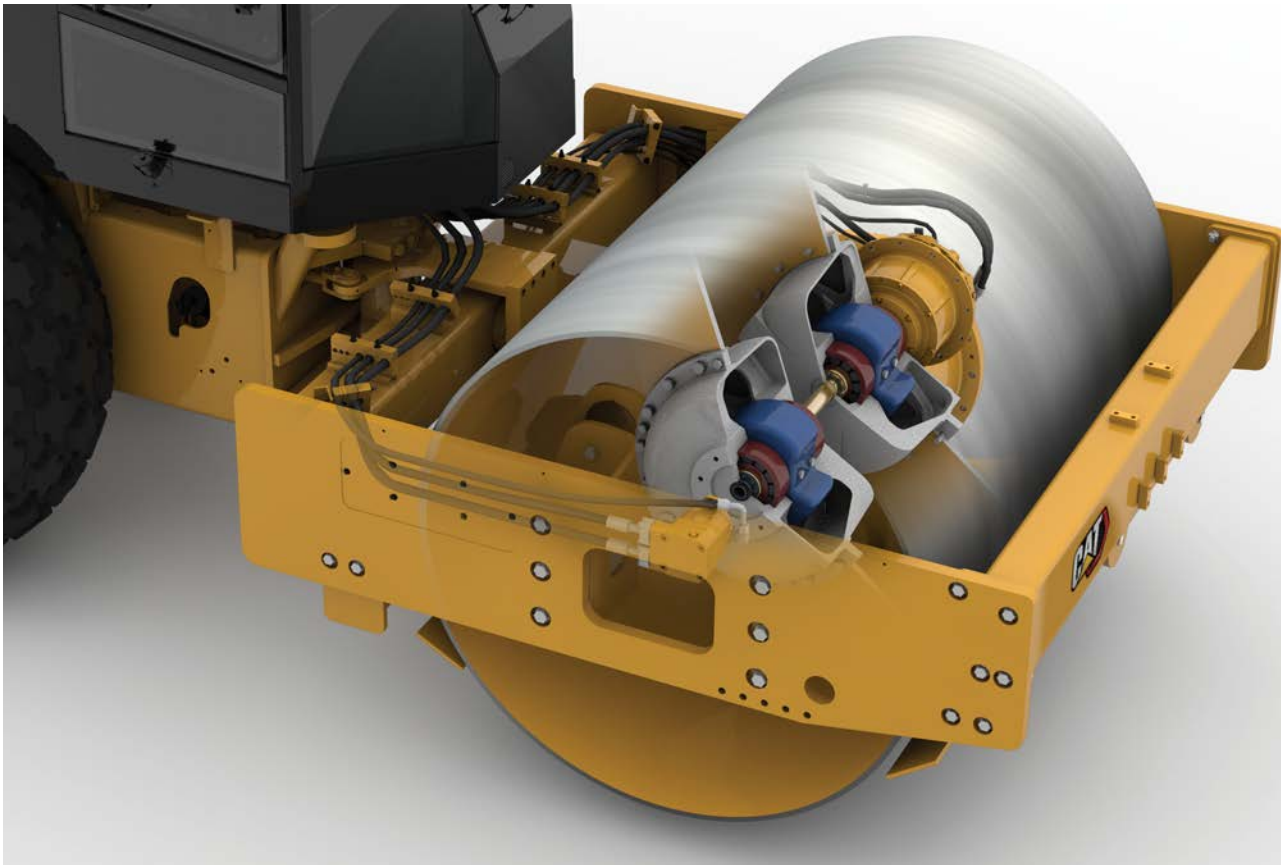
The exclusive Cat vibratory system has been providing contractors with reliable performance for over a quarter of a century. A pod-style eccentric weight design requires minimal service and delivers high dynamic force to help achieve density in the fewest number of passes.

DESIGNED WITH MORE

High amplitude combined with optimal drum weight enables the operator to achieve density in fewer passes while maintaining good tractive effort. Using the variable frequency option gives operators the ability to adjust vibration to maximize compaction performance. Eco-mode is available to help reduce fuel consumption without sacrificing productivity.

ENHANCE CONSISTENCY

Automated features help operators maintain consistency. Auto-vibe is designed to lower the risk of over-compaction, helping to achieve greater compaction uniformity. Automatic Speed Control makes it easy to maintain consistent impact spacing for uniform compaction (not available on all models).





EFFICIENT POWER

ENGINEERED FOR PRODUCTIVITY

Cat Vibratory Soil Compactors are powered by Cat engines and meet regional emissions requirements. Engines are designed for maximum fuel economy and reliable performance.

FUEL-EFFICIENT FEATURES

Eco-mode limits engine RPM helping to reduce fuel consumption under normal operating conditions. An Engine Idle Shutdown Timer reduces fuel burn and unnecessary idle time by shutting down the machine after a pre-set idling period.

POWER WHERE YOU NEED IT

The dual propel pump system delivers balanced flow to the rear axle motor and drum drive motor for good tractive effort when reversing direction and when working on steep grades. In addition, the limited-slip differential provides steady power by transferring torque to the tires for enhanced traction on soft, slippery surfaces.

COMFORT MATTERS

STAY SAFE AND COMFORTABLE

Cat Vibratory Soil Compactors are built to handle almost any operating condition, but your operators aren't. That's why comfort and safety features are built into every model. Comfort helps keep operators alert, which can boost productivity and improve safety.



VISIBILITY

A standard rear vision camera with a color touchscreen display, large mirrors and views to the rear tires assist operators when working in reverse. Upgrade to an LED lighting package for additional illumination and jobsite visibility. Additional Cat Detect camera technology kits are available through your Cat dealer.



Operator environment shown with ROPS/FOPS cab and cloth seat.

OPERATOR STATION

The operator station can be configured with the standard equipped sun canopy, optional ROPS/FOPS canopy* or optional climate-controlled ROPS/FOPS cab with hinged glass windows to protect the operator from the elements. The controls and LCD display are integrated into the pivoting seat and the steering column can be adjusted to an ideal operating position. Low sound levels and vibration transfer help to keep the operator comfortable throughout the day.

*ROPS/FOPS canopy is not available on the CS20.



Propel lever shown for machines equipped with the optional leveling blade.

FINGERTIP CONTROL

Controls are conveniently placed on the operating console to help operators find what they need, when they need it. The intuitive feel is designed to give operators the confidence they need to leverage the technology and productivity features built into the machine. Digital instrumentation and diagnostics are accessible through the multi-function LCD display.



Optional compaction technologies help operators of all skill levels improve efficiency and compaction quality. With information that enables them to determine when compaction meets density specifications, operators can reduce unnecessary passes and rework—saving time and money. Your Cat dealer can help you find the right solutions to meet your current and future business needs.

MACHINE DRIVE POWER

Machine Drive Power (MDP) is an energy-based measurement system that correlates compaction with rolling resistance to provide an indication of soil stiffness. This exclusive technology is ideally suited for depths of 30-60 cm (1-2 ft) and can be used on all soil types, whether the vibratory system is active or static. Available on smooth (CS) or padfoot (CP) models.

COMPACTION METER VALUE

Compaction Meter Value (CMV) is an accelerometer-based system that provides an indication of material stiffness on granular soils. It measures at depths greater than 1 m (3.3 ft) only when the vibratory system is active, and can help reveal buried objects, poor compaction or lack of moisture. Available on smooth drum (CS) models only.

GPS MAPPING

Cat mapping technology combines compaction measurements, pass count and location to provide a real time visualization of work as it happens. In addition to monitoring from the operator station, data is saved to the cloud and can be analyzed through VisionLink™* or exported for further processing. Mapping utilizes the Satellite Based Augmentation System (SBAS) or RTK Global Navigation Satellite System (GNSS), depending on jobsite needs and machine options.

*Requires a VisionLink PerformancePro subscription.



GROUND LEVEL ACCESS

Routine service on Cat Vibratory Soil Compactors is conducted from the right side of the machine. The durable one-piece hood tilts upward for ground-level access to the engine, cooling system and other key components. Grouped daily checkpoints and fluid level sight indicators are safely accessed at ground level. The cooling package tilts outward for easy cleaning.

LOW-MAINTENANCE COMPONENTS

Cat vibratory soil compactors have sealed-for-life articulation hitch bearings that never need greasing and a maintenance-free battery.

EXTENDED MAINTENANCE INTERVALS

Long maintenance intervals help minimize operating costs. The pod-style vibratory system has a 3-year/3000-hour vibratory bearing oil change interval with no scheduled oil sampling needed. Engine oil service intervals are every 500 hours, coolant every 12000 hours with sampling, and hydraulic oil every 3000 hours with the filter positioned externally for easy access.

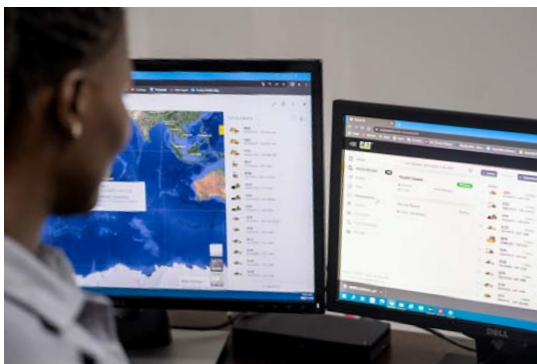
BUILT-IN DIAGNOSTICS

Built-in diagnostics monitor machine systems, alert the operator of performance issues and provide troubleshooting information.

CAT EQUIPMENT MANAGEMENT TECHNOLOGY

TAKES THE GUESSWORK OUT OF MANAGING YOUR EQUIPMENT

Cat equipment management telematics technology helps take the complexity out of managing your jobsites – by gathering data generated by your equipment, materials, and people and serving it up to you in customizable formats.



VISIONLINK™

VisionLink takes the guesswork out of managing your entire fleet – regardless of size or equipment manufacturer.* Review equipment data from your desktop or mobile device to maximize uptime and optimize assets. With interactive dashboards, VisionLink makes it easier for operations of all sizes to make informed decisions that lower costs, simplify maintenance, and improve safety and security on your jobsite. With different subscription-level options, your Cat dealer can help you determine what you need to connect your fleet and manage your business.

- + 24/7 Fleet Monitoring
- + Mixed Fleet Management
- + Optimize Fleet Utilization
- + Track Assets by Location
- + View Asset Health Status
- + Review Inspection Reports
- + Assign Maintenance Tasks
- + Minimize Downtime
- + Request Service and Order Parts
- + Download Summary Reports

* Data field availability can vary by equipment manufacturer.



CAT INSPECT

Cat Inspect is a mobile application that allows you to easily perform digital preventative maintenance checks, inspections, and daily walkarounds. The app includes machine-specific Preventive Maintenance (PM) checklists to perform service intervals as recommended in the Operation and Maintenance Manual. Inspections can easily be integrated with other Cat data systems like VisionLink so you can keep a close eye on your fleet.

CONFIGURATIONS AND OPTIONS

Cat vibratory soil compactors are available in smooth (CS) or padfoot (CP) configurations. Smooth drum models can be fitted with an optional padfoot shell kit to increase versatility.

PAD DESIGNS

OVAL-FACED

- + Tapered design introduces horizontal compaction force and inhibits material accumulation between pads
- + Engineered to penetrate deep into the soil on thick-lift applications

SQUARE-FACED

- + Produces good thin-lift compaction results
- + Used in surface sealing applications



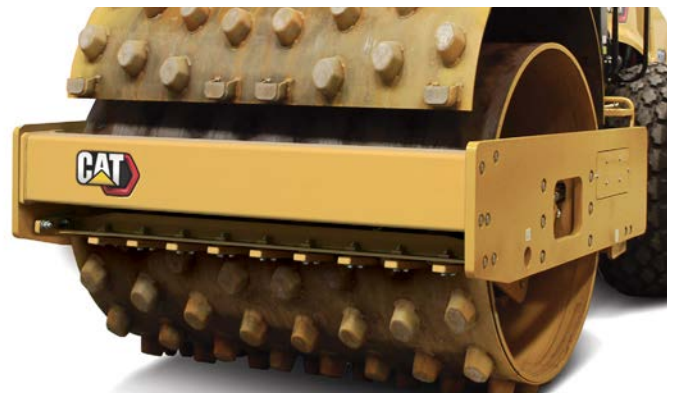
OVAL-FACED PAD



SQUARE-FACED PAD

SHELL KIT OPTIONS

Padfoot shell kits provide versatility by allowing a smooth drum machine to compact both semi-cohesive and cohesive materials. The kit comes with interchangeable smooth drum and padfoot scrapers. Oval and square pad designs are available.



LEVELING BLADE

A leveling blade is available on select models for backfilling, knockdown and light dozing. The blade features a bolt-on design for easy installation and removal and is controlled with thumb switches located on the propel lever. For machine compatibility, refer to the Standard and Optional equipment list or contact your Cat dealer for more information.



SELECTING THE RIGHT MODEL

FIND A COMPACTOR TO MATCH YOUR WORK

Not sure which model is right for you? Knowing the application and/or type of material the machine will be working on are key to determining the right fit for your fleet.

10-14 T APPLICATIONS

- + Road construction
- + Residential construction
- + Larger earth fills
- + Aggregate bases
- + Agriculture / irrigation projects
- + Following a motor grader
- + Production of ~200 m³

15-20 T APPLICATIONS

- + Airport construction
- + Railway foundations
- + Dams / large embankment fill
- + Rock fills
- + Mining applications (drying beds, waste tanks, embankments)
- + Recycling
- + Rock crushing
- + Following a tractor / scraper
- + Land reclamation (dredging)
- + Production of ~500 m³

IT'S ALL IN THE NAME

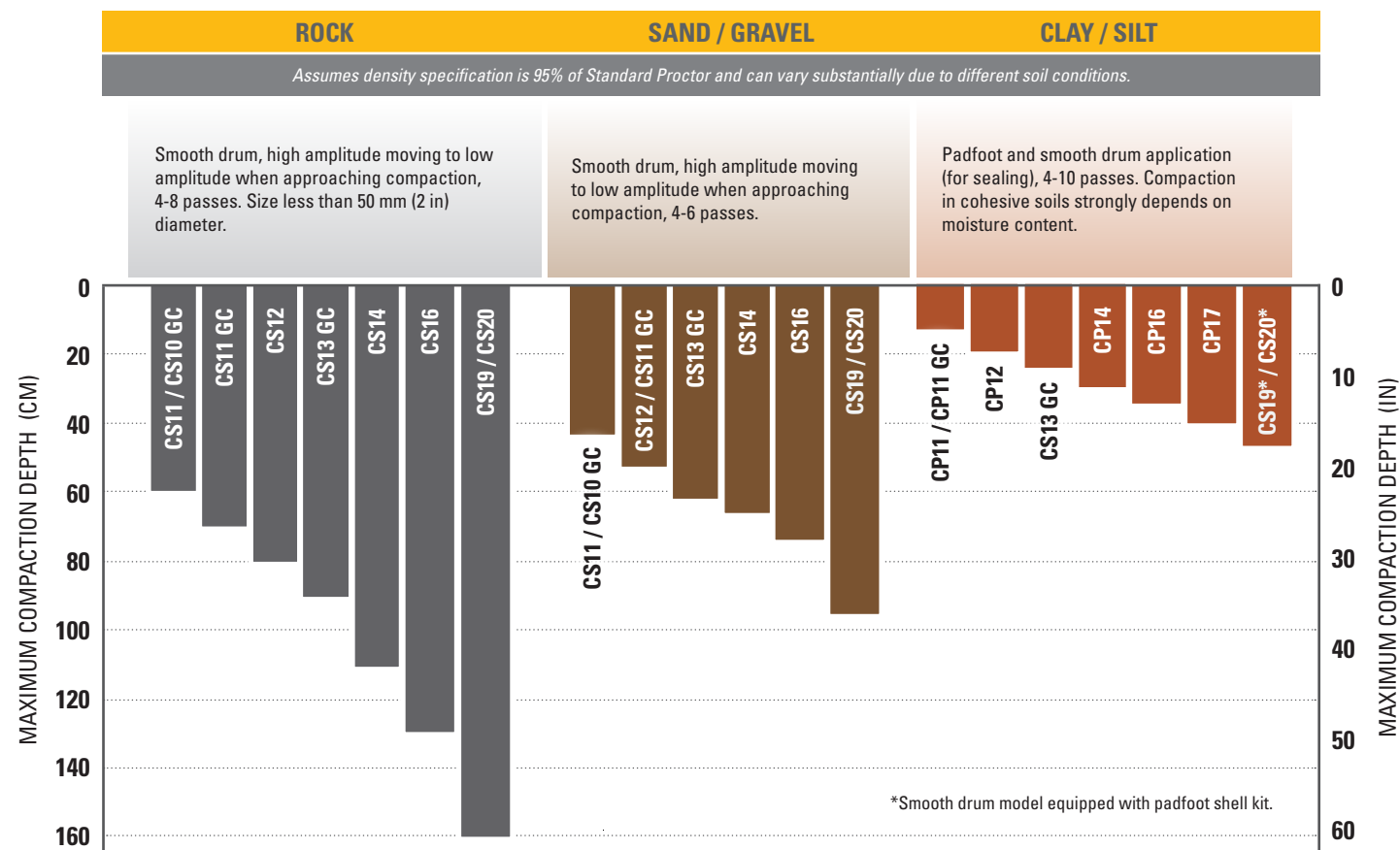
Cat soil compactor names help make each model easy to identify.

CS | SMOOTH
DRUM

CP | PADFOOT
DRUM

NUMBER

MACHINE WEIGHT
IN METRIC TONS



*Smooth drum model equipped with padfoot shell kit.

Model availability and configurations may vary by region. Please check with your Cat dealer for specific offerings and availability in your area.

TECHNICAL SPECIFICATIONS – 11-14 T MODELS

Model availability and configurations may vary by region. Please check with your Cat dealer for specific offerings and availability in your area.

OPERATING WEIGHT						
	CS11	CS12	CS14	CP11	CP12	CP14
Weight Class	11 T	12 T	14 T	11 T	12 T	14 T
Steel Sun Canopy	10 080 kg (22,223 lb)	11 065 kg (24,394 lb)	13 895 kg (30,633 lb)	10 645 kg (23,468 lb)	11 235 kg (24,769 lb)	13 895 kg (30,633 lb)
Weight at Drum	5690 kg (12,544 lb)	6165 kg (13,591 lb)	8965 kg (19,764 lb)	6200 kg (13,669 lb)	6275 kg (13,834 lb)	8965 kg (19,764 lb)
ROPS/FOPS Canopy	10 605 kg (23,380 lb)	11 542 kg (25,446 lb)	14 070 kg (31,019 lb)	11 182 kg (24,652 lb)	11 713 kg (25,823 lb)	14 070 kg (31,019 lb)
Weight at Drum	5787 kg (12,758 lb)	6256 kg (13,792 lb)	9020 kg (19,886 lb)	6302 kg (13,894 lb)	6364 kg (14,030 lb)	9020 kg (19,886 lb)
ROPS/FOPS Cab	10 806 kg (23,823 lb)	11 743 kg (25,889 lb)	14 245 kg (31,405 lb)	11 383 kg (25,095 lb)	11 914 kg (26,266 lb)	14 607 kg (32,203 lb)
Weight at Drum	5880 kg (12,963 lb)	6348 kg (13,995 lb)	9069 kg (19,994 lb)	6395 kg (14,099 lb)	6457 kg (14,235 lb)	9170 kg (20,216 lb)

- Operating weights are approximate and consider full fluids and 80 kg (176 lb) operator. Cab configuration includes heat and air conditioning. Smooth drum configured with flotation tires. Padfoot drum configured with oval pads.

POWERTRAIN		
Engine Model	CS11, CP11	Cat® C4.4
	CS12, CP12, CS14, CP14	Cat C7.1
Emissions	CS11, CP11	Brazil MAR-1, equivalent to U.S. EPA Tier 3 and EU Stage IIIA
	CS12, CP12, CS14, CP14	U.S. EPA Tier 3, EU Stage IIIA equivalent
Engine Power (ISO 14396)	CS11, CP11	96.5 kW (129.4 hp)
	CS12, CP12, CS14, CP14	116.1 kW (155.7 hp)
Gross Power (SAE J1995)	CS11, CP11	97.1 kW (130.2 hp)
	CS12, CP12, CS14, CP14	117.5 kW (157.6 hp)
Net Power (ISO 9249)	CS11, CP11	85.3 kW (114.4 hp)
	CS12, CP12, CS14, CP14	98.2 kW (131.7 hp)
Net Power (SAE J1349)	CS11, CP11	84.3 kW (113 hp)
	CS12, CP12, CS14, CP14	97 kW (130.1 hp)
Theoretical Gradeability, no vibration	CS11	55%
	CP11	54%
	CS12, CP12, CS14, CP14	57%

- Advertised power is tested per the specified standard in effect at the time of manufacture.
- Net power advertised is the power available at the engine flywheel when equipped with a fan at maximum speed, air cleaner, and alternator.
- Actual gradeability may vary based on site conditions and machine configuration. Refer to the Operation and Maintenance Manual for more information.
- The air conditioning system on this machine contains the fluorinated greenhouse gas refrigerant R134a (Global Warming Potential = 1430). The system contains 0.8 kg (1.8 lb) of refrigerant, which has a CO₂ equivalent of 1.144 metric tonnes (1.261 tons).

VIBRATION SYSTEM		
Frequency (Standard)		30.5 Hz (1830 vpm)
Nominal Amplitude @ 30.5 Hz (1830 vpm)		
High	CS11	1.9 mm (0.075 in)
	CP11	1.8 mm (0.071 in)
	CS12, CP12, CS14, CP14	2.1 mm (0.083 in)
Low	CS11	0.96 mm (0.038 in)
	CP11	0.88 mm (0.035 in)
	CS12, CP12, CS14, CP14	0.98 mm (0.039 in)
Centrifugal Force @ 30.5 Hz (1830 vpm)		
Maximum	CS11	244 kN (54,765 lb)
	CP11	257 kN (57,757 lb)
	CS12, CP12, CS14, CP14	301 kN (67,653 lb)
Minimum	CS11	122 kN (27,491 lb)
	CP11	126 kN (28,374 lb)
	CS12, CP12, CS14, CP14	141 kN (31,680 lb)
VM Class at High Amplitude (Cab Configuration)	CS11	VM2
	CP11, CS12, CP12	VM3
	CS14, CP14	VM4
Static Linear Load		
Steel Sun Canopy	CS11	26.7 kg/cm (149.3 lbs/in)
	CS12	28.9 kg/cm (161.8 lbs/in)
	CS14	42 kg/cm (235.2 lbs/in)
ROPS/FOPS Canopy	CS11	27.1 kg/cm (151.9 lbs/in)
	CS12	29.3 kg/cm (164.2 lbs/in)
	CS14	42.3 kg/cm (236.7 lbs/in)
ROPS/FOPS Cab	CS11	27.6 kg/cm (154.3 lbs/in)
	CS12	29.7 kg/cm (166.6 lbs/in)
	CS14	42.5 kg/cm (238 lbs/in)

DIMENSIONS						
	CS11	CS12	CS14	CP11	CP12	CP14
Overall Length	5862 mm (19.2 ft)	5862 mm (19.2 ft)	6050 mm (19.8 ft)	5862 mm (19.2 ft)	5862 mm (19.2 ft)	6050 mm (19.8 ft)
Leveling Blade	—	6395 mm (21 ft)	6545 mm (21.5 ft)	—	6395 mm (21 ft)	6545 mm (21.5 ft)
Overall Width	2295 mm (7.5 ft)	2295 mm (7.5 ft)	2335 mm (7.7 ft)	2295 mm (7.5 ft)	2295 mm (7.5 ft)	2335 mm (7.7 ft)
Leveling Blade	—	2500 mm (8.2 ft)	2500 mm (8.2 ft)	—	2500 mm (8.2 ft)	2500 mm (8.2 ft)
Height – Top of Cab	3114 mm (10.2 ft)	3114 mm (10.2 ft)	3109 mm (10.2 ft)	3122 mm (10.2 ft)	3122 mm (10.2 ft)	3117 mm (10.2 ft)
Drum Width	2134 mm (84 in)	2134 mm (84 in)	2134 mm (84 in)	2134 mm (84 in)	2134 mm (84 in)	2134 mm (84 in)

TECHNICAL SPECIFICATIONS – 16-20 T MODELS

Model availability and configurations may vary by region. Please check with your Cat dealer for specific offerings and availability in your area.

OPERATING WEIGHT					
	CS16	CS19	CS20	CP16	CP17
Weight Class	16 T	19 T	20 T	16 T	17 T
Steel Sun Canopy	15 565 kg (34,315 lb)	18 270 kg (40,278 lb)	20 220 kg (44,577 lb)	15 925 kg (35,109 lb)	17 182 kg (37,880 lb)
Weight at Drum	10 440 kg (23,016 lb)	13 260 kg (29,233 lb)	13 612 kg (30,009 lb)	10 540 kg (23,237 lb)	11 734 kg (25,869 lb)
ROPS/FOPS Canopy	15 735 kg (34,690 lb)	18 445 kg (40,664 lb)	—	16 100 kg (35,494 lb)	17 357 kg (38,266 lb)
Weight at Drum	10 500 kg (23,149 lb)	13 315 kg (29,355 lb)	—	10 595 kg (23,358 lb)	11 789 kg (25,990 lb)
ROPS/FOPS Cab	16 143 kg (35,589 lb)	18 780 kg (41,403 lb)	20 220 kg (44,577 lb)	16 506 kg (36,390 lb)	17 677 kg (38,971 lb)
Weight at Drum	10 542 kg (23,241 lb)	13 292 kg (29,304 lb)	13 612 kg (30,009 lb)	10 643 kg (23,464 lb)	11 924 kg (26,288 lb)

- Operating weights are approximate and consider full fluids and 80 kg (176 lb) operator. Cab configuration includes heat and air conditioning. Smooth drum configured with flotation tires. Padfoot drum configured with oval pads.

POWERTRAIN		
Engine Model	Cat® C7.1	
Emissions	CS16, CP16, CP17, CS19	U.S. EPA Tier 3, EU Stage IIIA equivalent
	CS20	Brazil MAR-1, equivalent to U.S. EPA Tier 3 and EU Stage IIIA
Engine Power (ISO 14396)	129 kW (173 hp)	
Gross Power (SAE J1995)	130.2 kW (174.6 hp)	
Net Power (ISO 9249)	108.5 kW (145.5 hp)	
Net Power (SAE J1349)	107.2 kW (143.8 hp)	
Theoretical Gradeability, no vibration	CS16, CP16	57%
	CP17	56%
	CS19	53%
	CS20	50%

- Advertised power is tested per the specified standard in effect at the time of manufacture.
- Net power advertised is the power available at the engine flywheel when equipped with a fan at maximum speed, air cleaner, and alternator.
- Actual gradeability may vary based on site conditions and machine configuration. Refer to the Operation and Maintenance Manual for more information.
- The air conditioning system on this machine contains the fluorinated greenhouse gas refrigerant R134a (Global Warming Potential = 1430). The system contains 0.8 kg (1.8 lb) of refrigerant, which has a CO₂ equivalent of 1.144 metric tonnes (1.261 tons).

VIBRATION SYSTEM		
Frequency (Standard)	28 Hz (1680 vpm)	
Nominal Amplitude @ 28 Hz (1680 vpm)		
High	2.1 mm (0.083 in)	
Low	0.98 mm (0.039 in)	
Centrifugal Force @ 28 Hz (1680 vpm)		
Maximum	335 kN (75,234 lb)	
Minimum	156 kN (35,163 lb)	
VM Class at High Amplitude (Cab Configuration)	VM5	
Static Linear Load		
Steel Sun Canopy	CS16	48.9 kg/cm (274 lbs/in)
	CS19	62.1 kg/cm (348 lbs/in)
	CS20	63.8 kg/cm (357.2 lbs/in)
ROPS/FOPS Canopy	CS16	49.2 kg/cm (275.5 lbs/in)
	CS19	62.4 kg/cm (349.4 lbs/in)
	CS20	—
ROPS/FOPS Cab	CS16	49.4 kg/cm (276.6 lbs/in)
	CS19	62.3 kg/cm (348.8 lbs/in)
	CS20	63.8 kg/cm (357.2 lbs/in)

DIMENSIONS					
	CS16	CS19	CS20	CP16	CP17
Overall Length	6050 mm (19.8 ft)	6127 mm (20.1 ft)	6127 mm (20.1 ft)	6005 mm (19.7 ft)	6140 mm (20.1 ft)
Leveling Blade	6545 mm (21.5 ft)	—	—	6545 mm (21.5 ft)	—
Overall Width	2335 mm (7.7 ft)	2465 mm (8.1 ft)	2465 mm (8.1 ft)	2335 mm (7.7 ft)	2365 mm (7.8 ft)
Leveling Blade	2500 mm (8.2 ft)	—	—	2500 mm (8.2 ft)	—
Height – Top of Cab	3109 mm (10.2 ft)	3109 mm (10.2 ft)	3109 mm (10.2 ft)	3117 mm (10.2 ft)	3096 mm (10.2 ft)
Drum Width	2134 mm (84 in)	2134 mm (84 in)	2134 mm (84 in)	2134 mm (84 in)	2134 mm (84 in)

STANDARD & OPTIONAL EQUIPMENT

SMOOTH DRUM MODELS (CS)

Features, standard and optional equipment may vary by region. Please check with your local Cat dealer for specific offerings and availability in your area.

OPERATOR ENVIRONMENT	STANDARD	OPTIONAL
Steel Sun Canopy with Handrails, Floor Mat, Vinyl Seat	●	
ROPS/FOPS Canopy with Handrails, Floor Mat, Vinyl Seat		○ CS11, CS12, CS14, CS16, CS19
ROPS/FOPS Cab with Climate Control, Cloth Seat, Exterior Rear View Mirrors		○
Sun Visor (Cab)		○
Roll-Down Screen (Cab)		○
Adjustable Seat with Integrated Console	●	
LCD Display with Lockable Vandalism Guard	●	
Adjustable Tilting Steering Column with Integrated Cup Holders	●	
Rear Vision Camera System with Color Touchscreen Display	●	
High Visibility 50 mm (2 in) Seat Belt	●	
12-Volt Power Outlet	●	
Horn, Backup Alarm	●	

VIBRATORY SYSTEM	STANDARD	OPTIONAL
Smooth Drum	●	
Removable Shell Kit – Oval or Square Pads		○
Pod-Style Eccentric Weight Housings	●	
Dual Amplitude, Single Frequency	●	
Variable Frequency		○
Auto-vibe Function	●	
MicroVibe™		○ CS11
Single Adjustable Steel Scraper	●	
Dual Adjustable Steel Scrapers		○
Dual Adjustable Polyurethane Scrapers		○
Leveling Blade		○ CS12, CS14, CS16

TECHNOLOGY SOLUTIONS	STANDARD	OPTIONAL
VisionLink™	●	
Machine Drive Power (MDP)		○
Compaction Meter Value (CMV)		○
GPS Mapping		○
Cat Detect with Smart Camera*		○
Cat Detect with Surround Cameras*		○
Cat Seat Belt Reminder*		○

*Available as a Cat dealer installed aftermarket kit.

POWERTRAIN	STANDARD	OPTIONAL
Cat C4.4 Engine	● CS11	
Cat C7.1 Engine	● CS12, CS14, CS16, CS19, CS20	
Air Cleaner, Dual Element	●	
Three Speed Throttle Switch including Eco-mode	●	
Automatic Speed Control (ASC)	● CS12, CS14, CS16, CS19, CS20	
Dual Propel Pumps; One for Drum Drive, One for Rear Axle	●	
Fuel Filter, Water Separator, Priming Pump, Water Indicator	●	
Tilting Radiator / Hydraulic Oil Cooler	●	
Dual Braking System	●	
Two-Speed Hydrostatic Transmission	●	
Limited Slip Differential	●	
Transmission Guard		○

ELECTRICAL	STANDARD	OPTIONAL
24-Volt Electrical System	●	
85-Amp Alternator	● CS11	
100-Amp Alternator	● CS12, CS14, CS16, CS19, CS20	
750 Cold-cranking Amps Battery Capacity	●	

OTHER	STANDARD	OPTIONAL
Lockable Engine Enclosure, Hydraulic and Fuel Tanks	●	
Sight Gauges for Hydraulic Oil Level and Radiator Coolant Level	●	
Scheduled Oil Sampling (S•O•S™) Ports: Engine Oil, Hydraulic Oil, and Coolant	●	
Halogen Working Lights (4)	●	
Halogen Working Lights (8)		○
Amber Rotating Beacon		○

STANDARD & OPTIONAL EQUIPMENT

PADFOOT DRUM MODELS (CP)

Features, standard and optional equipment may vary by region. Please check with your local Cat dealer for specific offerings and availability in your area.

OPERATOR ENVIRONMENT	STANDARD	OPTIONAL
Steel Sun Canopy with Handrails, Floor Mat, Vinyl Seat	●	
ROPS/FOPS Canopy with Handrails, Floor Mat, Vinyl Seat		○
ROPS/FOPS Cab with Climate Control, Cloth Seat, Exterior Rear View Mirrors		○
Sun Visor (Cab)		○
Roll-Down Screen (Cab)		○
Adjustable Seat with Integrated Console	●	
LCD Display with Lockable Vandalism Guard	●	
Adjustable Tilting Steering Column with Integrated Cup Holders	●	
Rear Vision Camera System with Color Touchscreen Display	●	
High Visibility 50 mm (2 in) Seat Belt	●	
12-Volt Power Outlet	●	
Horn, Backup Alarm	●	

VIBRATORY SYSTEM	STANDARD	OPTIONAL
Padfoot Drum – Oval or Square Pads	●	
Pod-Style Eccentric Weight Housings	●	
Dual Amplitude, Single Frequency	●	
Variable Frequency		○
Auto-vibe Function	●	
Dual Adjustable Steel Scrapers	●	
Leveling Blade		○ CP12, CP14, CP16

TECHNOLOGY SOLUTIONS	STANDARD	OPTIONAL
VisionLink™	●	
Machine Drive Power (MDP)		○
GPS Mapping		○
Cat Detect with Smart Camera*		○
Cat Detect with Surround Cameras*		○
Cat Seat Belt Reminder*		○

*Available as a Cat dealer installed aftermarket kit.

POWERTRAIN	STANDARD	OPTIONAL
Cat C4.4 Engine	● CP11	
Cat C7.1 Engine	● CP12, CP14, CP16, CP17	
Air Cleaner, Dual Element	●	
Three Speed Throttle Switch including Eco-mode	●	
Automatic Speed Control (ASC)	● CP12, CP14, CP16, CP17	
Dual Propel Pumps; One for Drum Drive, One for Rear Axle	●	
Fuel Filter, Water Separator, Priming Pump, Water Indicator	●	
Tilting Radiator / Hydraulic Oil Cooler	●	
Dual Braking System	●	
Two-Speed Hydrostatic Transmission	●	
Limited Slip Differential	●	
Transmission Guard		○

ELECTRICAL	STANDARD	OPTIONAL
24-Volt Electrical System	●	
85-Amp Alternator	● CP11	
100-Amp Alternator	● CP12, CP14, CP16, CP17	
750 Cold-cranking Amps Battery Capacity	●	

OTHER	STANDARD	OPTIONAL
Lockable Engine Enclosure, Hydraulic and Fuel Tanks	●	
Sight Gauges for Hydraulic Oil Level and Radiator Coolant Level	●	
Scheduled Oil Sampling (S•O•S SM) Ports: Engine Oil, Hydraulic Oil, and Coolant	●	
Halogen Working Lights (4)	●	
Halogen Working Lights (8)		○
Amber Rotating Beacon		○



QEHQ3192 (09/2025)
Build Number: 03A
(Afr-ME, Eurasia, Aus-NZ,
Hong Kong, Indonesia, Taiwan,
Pacific Islands, SE Asia,
S Am [excl. Colombia and Chile])

For more complete information on Cat products, dealer services and industry solutions, visit us on the web at www.cat.com

Materials and specifications are subject to change without notice. Featured machines in photos may include additional equipment. See your Cat dealer for available options.

© 2025 Caterpillar. All Rights Reserved. CAT, CATERPILLAR, LET'S DO THE WORK, their respective logos, "Caterpillar Corporate Yellow", the "Power Edge" and Cat "Modern Hex" trade dress as well as corporate and product identity used herein, are trademarks of Caterpillar and may not be used without permission.

VisionLink is a trademark of Caterpillar Inc., registered in the United States and in other countries.

www.cat.com www.caterpillar.com

