

MEDIUM AND LARGE PERFORMANCE LINE

# VIBRATORY SOIL COMPACTORS



---

CS12, CP12	12 T
CS13	13 T
CS14, CP14	14 T
CS16, CP16	16 T
CS17	17 T
CS19	19 T
Compaction Width	2134 mm (84 in)

Meets U.S. EPA Tier 4 Final, EU Stage V and Japan 2014 emission standards.

Model availability and configurations may vary by region. Please check with your Cat® dealer for specific offerings and availability in your area.



# CAT® VIBRATORY SOIL COMPACTORS

PRODUCTIVE. RELIABLE. DURABLE.

## CAT® VIBRATORY SOIL COMPACTORS

are evidence of our world-class engineering and manufacturing know-how for built-in quality, reliability, and durability. Performance-boosting technology along with a wide range of standard machine features help enhance operator productivity and efficiency.



<b>CS12</b>	<b>CS13</b>	<b>CS14</b>	<b>CS16</b>	<b>CS17</b>	<b>CS19</b>
⏏	⏏	⏏	⏏	⏏	⏏
<b>CS56B</b>	<b>CS66B</b>	<b>CS68B</b>	<b>CS74B</b>	<b>CS76B</b>	<b>CS78B</b>

<b>CP12</b>	<b>CP14</b>	<b>CP16</b>
⏏	⏏	⏏
<b>CP56B</b>	<b>CP68B</b>	<b>CP74B</b>



Model availability and configurations may vary by region. Please check with your Cat dealer for specific offerings and availability in your area.

## DIFFERENT NAME, SAME PERFORMANCE.

Updated names are part of an effort to make all Cat vibratory soil compactor model names simpler. The Cat vibratory soil compactor range has been renamed to identify the weight of the machines in metric tonnes (tons), and no more series letter modifiers like "B." While the name may be a little different, Cat vibratory soil compactors continue to provide the same great performance, productivity and durability that you depend on day after day.





---

## LOW OPERATING COSTS

Eco-mode, extended service intervals and a hitch with sealed-for-life bearings that do not require routine maintenance help keep your operating and maintenance costs low.

---

## INCREASE EFFICIENCY WITH COMPACTION TECHNOLOGY

On-board compaction measurement technology indicates when specifications are met helping to eliminate guesswork, reduce unnecessary passes and minimize rework.

---

## FOCUSED ON VISIBILITY AND COMFORT

A rear vision camera enhances visibility around the machine and a pivoting seat with integrated controls and tiltable steering console provide an ergonomic work environment.

# QUALITY COMPACTION

## HIGH-PERFORMANCE DESIGN

Optimal weight and amplitude help Cat Vibratory Soil Compactors reach target density quickly. Built-in, automated features aid operators in consistently producing uniform, high-quality compaction results.

### RELIABLE VIBRATORY SYSTEM

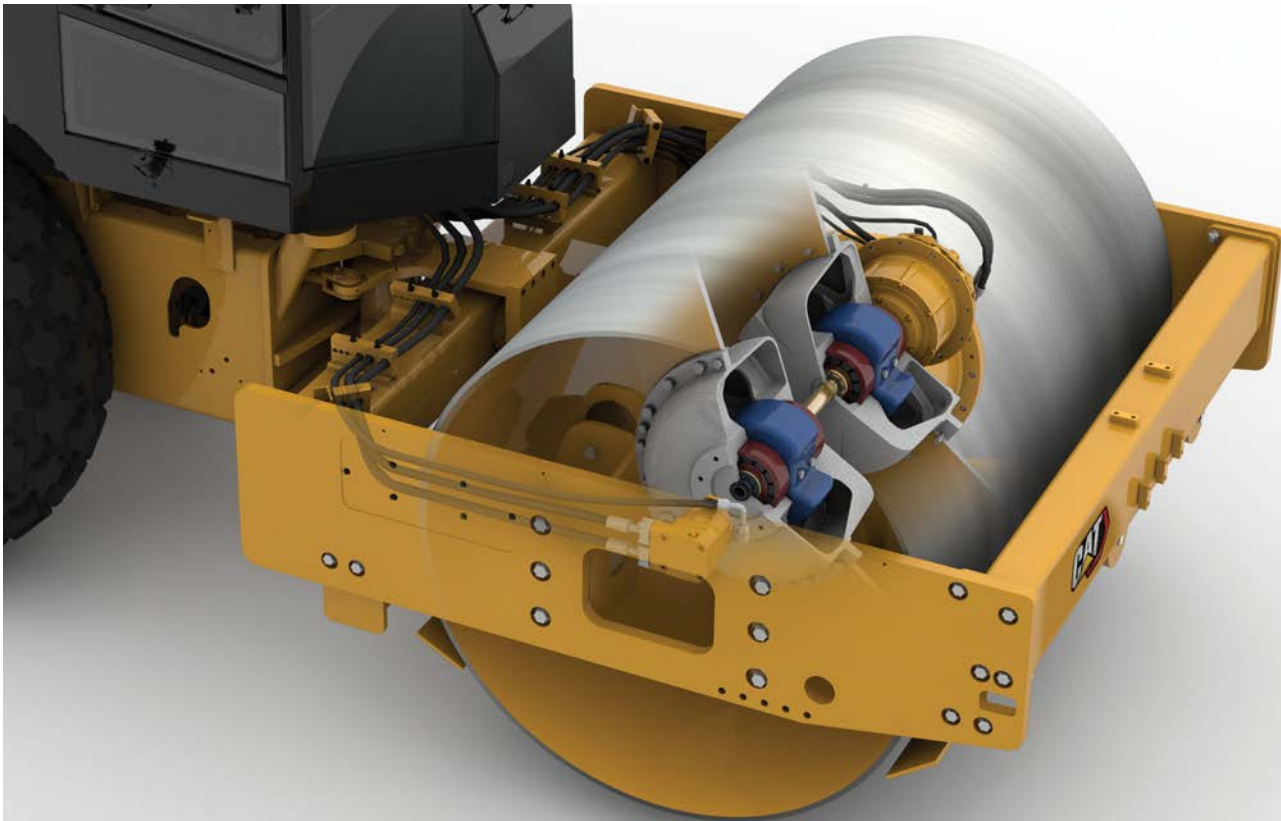
The exclusive Cat vibratory system has been providing contractors with reliable performance for over a quarter of a century. A pod-style eccentric weight design requires minimal service and delivers high dynamic force to help achieve density in the fewest number of passes.

### DESIGNED WITH MORE

High amplitude combined with optimal drum weight enables the operator to achieve density in fewer passes while maintaining good tractive effort. Using the variable frequency option gives operators the ability to adjust vibration to maximize compaction performance. Eco-mode is available to help reduce fuel consumption without sacrificing productivity.

### ENHANCE CONSISTENCY

Automated features help operators maintain consistency. Auto-vibe is designed to lower the risk of over-compaction, helping to achieve greater compaction uniformity. Automatic Speed Control makes it easy to maintain consistent impact spacing for uniform compaction.







# EFFICIENT POWER

## ENGINEERED FOR PRODUCTIVITY

Cat Vibratory Soil Compactors are powered by Cat engines and meet regional emissions requirements. Engines are designed for maximum fuel economy and reliable performance.

---

### FUEL-EFFICIENT FEATURES

Eco-mode limits engine RPM helping to reduce fuel consumption under normal operating conditions. An Engine Idle Shutdown Timer reduces fuel burn and unnecessary idle time by shutting down the machine after a pre-set idling period.

---

### POWER WHERE YOU NEED IT

The dual propel pump system delivers balanced flow to the rear axle motor and drum drive motor for good tractive effort when reversing direction and when working on steep grades. In addition, the limited-slip differential provides steady power by transferring torque to the tires for enhanced traction on soft, slippery surfaces.

# COMFORT MATTERS

## STAY SAFE AND COMFORTABLE

---

Cat Vibratory Soil Compactors are built to handle almost any operating condition, but your operators aren't. That's why comfort and safety features are built into every model. Comfort helps keep operators alert, which can boost productivity and improve safety.



### VISIBILITY

A standard rear vision camera with a color touchscreen display, large mirrors and views to the rear tires assist operators when working in reverse. Upgrade to an LED lighting package for additional illumination and jobsite visibility. Additional Cat Detect camera technology kits are available through your Cat dealer.



Operator environment shown with ROPS/FOPS cab and cloth seat.

### OPERATOR STATION

The operator station can be configured with a ROPS/FOPS canopy\* or climate-controlled ROPS/FOPS cab with hinged glass windows to protect the operator from the elements. The controls and LCD display are integrated into the pivoting seat and the steering column can be adjusted to an ideal operating position. Low sound levels and vibration transfer help to keep the operator comfortable throughout the day.

\*ROPS/FOPS canopy is available on select models for certain regions.



Propel lever shown for machines equipped with the optional leveling blade.

### FINGERTIP CONTROL

Controls are conveniently placed on the operating console to help operators find what they need, when they need it. The intuitive feel is designed to give operators the confidence they need to leverage the technology and productivity features built into the machine. Digital instrumentation and diagnostics are accessible through the multi-function LCD display.





Optional compaction technologies help operators of all skill levels improve efficiency and compaction quality. With information that enables them to determine when compaction meets density specifications, operators can reduce unnecessary passes and rework—saving time and money. Your Cat dealer can help you find the right solutions to meet your current and future business needs.

## MACHINE DRIVE POWER

---

Machine Drive Power (MDP) is an energy-based measurement system that correlates compaction with rolling resistance to provide an indication of soil stiffness. This exclusive technology is ideally suited for depths of 30-60 cm (1-2 ft) and can be used on all soil types, whether the vibratory system is active or static. Available on smooth (CS) or padfoot (CP) models.

## GPS MAPPING

---

Cat mapping technology combines compaction measurements, pass count and location to provide a real time visualization of work as it happens. In addition to monitoring from the operator station, data is saved to the cloud and can be analyzed through VisionLink™\* or exported for further processing. Mapping utilizes the Satellite Based Augmentation System (SBAS) or RTK Global Navigation Satellite System (GNSS), depending on jobsite needs and machine options.

\*Requires a VisionLink PerformancePro subscription.

## COMPACTION METER VALUE

---

Compaction Meter Value (CMV) is an accelerometer-based system that provides an indication of material stiffness on granular soils. It measures at depths greater than 1 m (3.3 ft) only when the vibratory system is active, and can help reveal buried objects, poor compaction or lack of moisture. Available on smooth drum (CS) models only.

## SEMI-AUTONOMOUS TECHNOLOGY

---

Cat Command for Compaction is an operator-assisted, semi-autonomous technology that automates the compaction process based on operator inputs. Cat Command uses settings the operator enters to control speed, direction, steering, and the vibration system of the compactor to provide consistent compaction results.



---

## GROUND LEVEL ACCESS

Routine service on Cat Vibratory Soil Compactors is conducted from the right side of the machine. The durable one-piece hood tilts upward for ground-level access to the engine, cooling system and other key components. Grouped daily checkpoints and fluid level sight indicators are safely accessed at ground level. The cooling package tilts outward for easy cleaning.

---

## LOW-MAINTENANCE COMPONENTS

Cat vibratory soil compactors have sealed-for-life articulation hitch bearings that never need greasing and a maintenance-free battery.

---

## EXTENDED MAINTENANCE INTERVALS

Long maintenance intervals help minimize operating costs. The pod-style vibratory system has a 3-year/3000-hour vibratory bearing oil change interval with no scheduled oil sampling needed. Engine oil service intervals are every 500 hours, coolant every 12000 hours with sampling, and hydraulic oil every 3000 hours with the filter positioned externally for easy access.

---

## BUILT-IN DIAGNOSTICS

Built-in diagnostics monitor machine systems, alert the operator of performance issues and provide troubleshooting information.



# CAT EQUIPMENT MANAGEMENT TECHNOLOGY

## TAKES THE GUESSWORK OUT OF MANAGING YOUR EQUIPMENT

---

Cat equipment management telematics technology helps take the complexity out of managing your jobsites – by gathering data generated by your equipment, materials, and people and serving it up to you in customizable formats.



### VISIONLINK™

VisionLink takes the guesswork out of managing your entire fleet – regardless of size or equipment manufacturer.\* Review equipment data from your desktop or mobile device to maximize uptime and optimize assets. With interactive dashboards, VisionLink makes it easier for operations of all sizes to make informed decisions that lower costs, simplify maintenance, and improve safety and security on your jobsite. With different subscription-level options, your Cat dealer can help you determine what you need to connect your fleet and manage your business.

- + 24/7 Fleet Monitoring
- + Mixed Fleet Management
- + Optimize Fleet Utilization
- + Track Assets by Location
- + View Asset Health Status
- + Review Inspection Reports
- + Assign Maintenance Tasks
- + Minimize Downtime
- + Request Service and Order Parts
- + Download Summary Reports

\* Data field availability can vary by equipment manufacturer.



### CAT INSPECT

Cat Inspect is a mobile application that allows you to easily perform digital preventative maintenance checks, inspections, and daily walkarounds. The app includes machine-specific Preventive Maintenance (PM) checklists to perform service intervals as recommended in the Operation and Maintenance Manual. Inspections can easily be integrated with other Cat data systems like VisionLink so you can keep a close eye on your fleet.

# CONFIGURATIONS AND OPTIONS

Cat vibratory soil compactors are available in smooth (CS) or padfoot (CP) configurations. Smooth drum models can be fitted with an optional padfoot shell kit to increase versatility.

## PAD DESIGNS

### OVAL-FACED

- + Tapered design introduces horizontal compaction force and inhibits material accumulation between pads
- + Engineered to penetrate deep into the soil on thick-lift applications

### SQUARE-FACED

- + Produces good thin-lift compaction results
- + Used in surface sealing applications



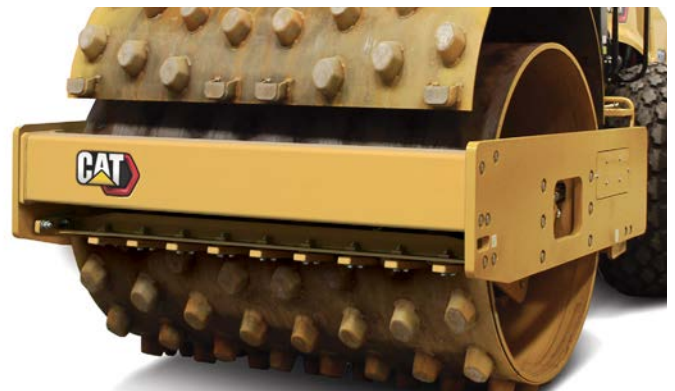
OVAL-FACED PAD



SQUARE-FACED PAD

## SHELL KIT OPTIONS

Padfoot shell kits provide versatility by allowing a smooth drum machine to compact both semi-cohesive and cohesive materials. The kit comes with interchangeable smooth drum and padfoot scrapers. Oval and square pad designs are available.



## LEVELING BLADE

A leveling blade is available on select models for backfilling, knockdown and light dozing. The blade features a bolt-on design for easy installation and removal and is controlled with thumb switches located on the propel lever. For machine compatibility, refer to the Standard and Optional equipment list or contact your Cat dealer for more information.





# SELECTING THE RIGHT MODEL

## FIND A COMPACTOR TO MATCH YOUR WORK

Not sure which model is right for you? Knowing the application and/or type of material the machine will be working on are key to determining the right fit for your fleet.

### 10-14 T APPLICATIONS

- + Road construction
- + Residential construction
- + Larger earth fills
- + Aggregate bases
- + Agriculture / irrigation projects
- + Following a motor grader
- + Production of ~200 m<sup>3</sup>

### 15-20 T APPLICATIONS

- + Airport construction
- + Railway foundations
- + Dams / large embankment fill
- + Rock fills
- + Mining applications (drying beds, waste tanks, embankments)
- + Recycling
- + Rock crushing
- + Following a tractor / scraper
- + Land reclamation (dredging)
- + Production of ~500 m<sup>3</sup>

## IT'S ALL IN THE NAME

Cat soil compactor names help make each model easy to identify.

**CS** | SMOOTH  
DRUM  
**CP** | PADFOOT  
DRUM

## NUMBER

**MACHINE WEIGHT**  
IN METRIC TONS

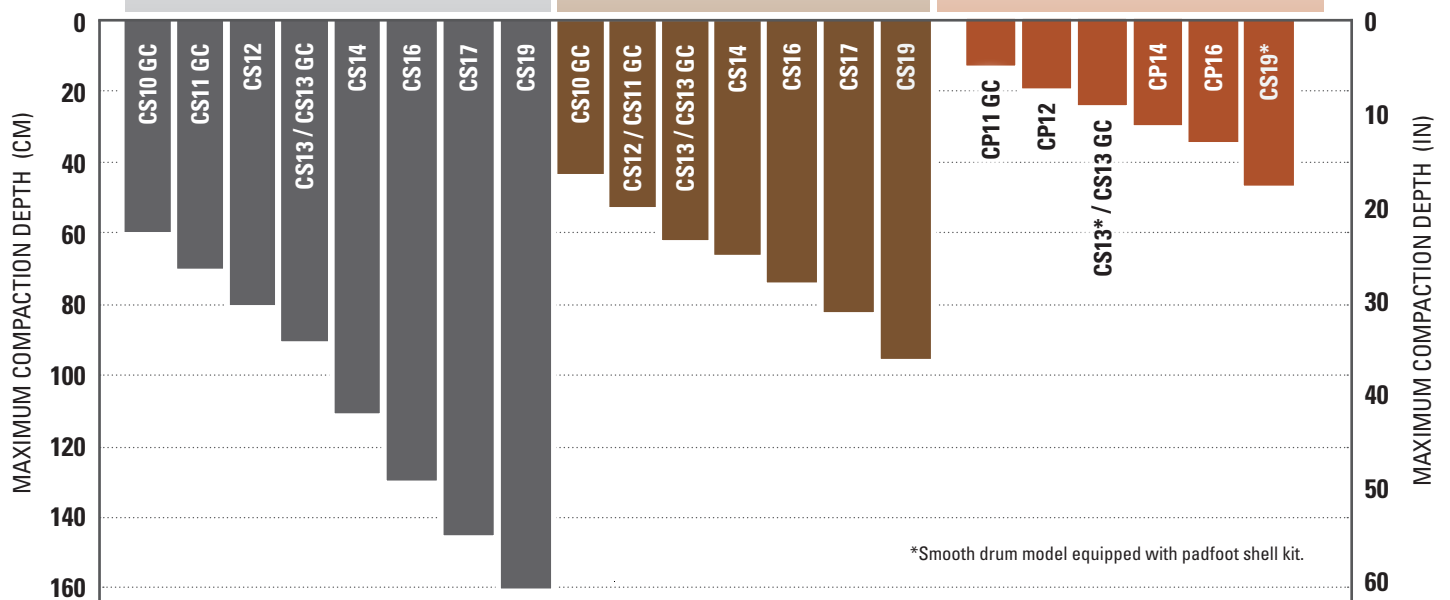


ROCK	SAND / GRAVEL	CLAY / SILT
Assumes density specification is 95% of Standard Proctor and can vary substantially due to different soil conditions.		

Smooth drum, high amplitude moving to low amplitude when approaching compaction, 4-8 passes. Size less than 50 mm (2 in) diameter.

Smooth drum, high amplitude moving to low amplitude when approaching compaction, 4-6 passes.

Padfoot and smooth drum application (for sealing), 4-10 passes. Compaction in cohesive soils strongly depends on moisture content.



\*Smooth drum model equipped with padfoot shell kit.

Model availability and configurations may vary by region. Please check with your Cat dealer for specific offerings and availability in your area.

# TECHNICAL SPECIFICATIONS

## 12-14 T MODELS

Model availability and configurations may vary by region. Please check with your Cat dealer for specific offerings and availability in your area.

OPERATING WEIGHT					
	CS12	CS13	CS14	CP12	CP14
Weight Class	12 T	13 T	14 T	12 T	14 T
ROPS/FOPS Canopy	11 724 kg (25,848 lb)	—	—	12032 kg (26,526 lb)	—
Weight at Drum	6195 kg (13,657 lb)	—	—	6422 kg (14,159 lb)	—
ROPS/FOPS Cab	11 953 kg (26,351 lb)	12 791 kg (28,199 lb)	14 336 kg (31,605 lb)	12 261 kg (27,030 lb)	14 755 kg (32,530 lb)
Weight at Drum	6339 kg (13,975 lb)	7304 kg (16,102 lb)	9035 kg (19,918 lb)	6567 kg (14,477 lb)	9228 kg (20,345 lb)

- Operating weights are approximate and consider full fluids and 75 kg (165 lb) operator. Cab configuration includes heat and air conditioning. Smooth drum configured with flotation tires. Padfoot drum configured with oval pads.

POWERTRAIN		
Engine Model	Cat® C4.4	
Emissions	U.S. EPA Tier 4 Final, EU Stage V, Japan 2014	
Engine Power (ISO 14396)	117 kW (156.9 hp)	
Gross Power (SAE J1995)	118 kW (158.2 hp)	
Net Power (ISO 9249)	97.4 kW (130.6 hp)	
Net Power (SAE J1349)	96.9 kW (129.9 hp)	
Theoretical Gradeability, no vibration	CS12, CP12, CS13	>65%
	CS14, CP14	65%

- Advertised power is tested per the specified standard in effect at the time of manufacture.
- Net power advertised is the power available at the engine flywheel when equipped with a fan at maximum speed, air cleaner, clean emissions module, and alternator.
- Actual gradeability may vary based on site conditions and machine configuration. Refer to the Operation and Maintenance Manual for more information.
- The air conditioning system on this machine contains the fluorinated greenhouse gas refrigerant R134a (Global Warming Potential = 1430). The system contains 0.8 kg (1.8 lb) of refrigerant, which has a CO<sub>2</sub> equivalent of 1.144 metric tonnes (1.261 tons).

VIBRATION SYSTEM		
Frequency (Standard)		30.5 Hz (1830 vpm)
Nominal Amplitude @ 30.5 Hz (1830 vpm)		
High		2.1 mm (0.083 in)
Low		0.98 mm (0.039 in)
Centrifugal Force @ 30.5 Hz (1830 vpm)		
Maximum		301 kN (67,653 lb)
Minimum		141 kN (31,680 lb)
VM Class at High Amplitude (Cab Configuration)	CS12, CP12, CS13	VM3
	CS14, CP14	VM4
Static Linear Load		
CS12 – ROPS/FOPS Canopy		29.3 kg/cm (164.2 lbs/in)
CS12 – ROPS/FOPS Cab		29.7 kg/cm (166.3 lbs/in)
CS13 – ROPS/FOPS Cab		34.2 kg/cm (191.7 lbs/in)
CS14 – ROPS/FOPS Cab		42.3 kg/cm (237.1 lbs/in)

DIMENSIONS					
	CS12	CS13	CS14	CP12	CP14
Overall Length	5867 mm (19.2 ft)	5927 mm (19.4 ft)	6058 mm (19.9 ft)	5867 mm (19.2 ft)	6058 mm (19.9 ft)
Leveling Blade	6401 mm (21 ft)	6401 mm (21 ft)	6553 mm (21.5 ft)	6401 mm (21 ft)	6553 mm (21.5 ft)
Overall Width	2295 mm (7.5 ft)	2335 mm (7.7 ft)	2335 mm (7.7 ft)	2295 mm (7.5 ft)	2335 mm (7.7 ft)
Leveling Blade	2500 mm (8.2 ft)	2500 mm (8.2 ft)	2500 mm (8.2 ft)	2500 mm (8.2 ft)	2500 mm (8.2 ft)
Height – Top of Cab	3094 mm (10.2 ft)	3094 mm (10.2 ft)	3092 mm (10.1 ft)	3105 mm (10.2 ft)	3100 mm (10.2 ft)
Drum Width	2134 mm (84 in)	2134 mm (84 in)	2134 mm (84 in)	2134 mm (84 in)	2134 mm (84 in)



# TECHNICAL SPECIFICATIONS

## 16-19 T MODELS

Model availability and configurations may vary by region. Please check with your Cat dealer for specific offerings and availability in your area.

OPERATING WEIGHT				
	CS16	CS17	CS19	CP16
Weight Class	16 T	17 T	19 T	16 T
ROPS/FOPS Cab	15 999 kg (35,272 lb)	17 420 kg (38,405 lb)	18 888 kg (41,641 lb)	16 339 kg (36,022 lb)
Weight at Drum	10 423 kg (22,979 lb)	12 047 kg (26,559 lb)	13 443 kg (29,637 lb)	10 576 kg (23,315 lb)

- Operating weights are approximate and consider full fluids, 75 kg (165 lb) operator, cab with heat and air conditioning. Smooth drum configured with flotation tires. Padfoot drum configured with oval pads.

POWERTRAIN		
Engine Model	Cat C4.4	
Emissions	U.S. EPA Tier 4 Final, EU Stage V, Japan 2014	
Engine Power (ISO 14396)	129.4 kW (173.5 hp)	
Gross Power (SAE J1995)	130.4 kW (174.9 hp)	
Net Power (ISO 9249)	108.7 kW (145.8 hp)	
Net Power (SAE J1349)	108.2 kW (145.1 hp)	
Theoretical Gradeability, no vibration	CS16, CP16	59%
	CS17	56%
	CS19	53%

- Advertised power is tested per the specified standard in effect at the time of manufacture.
- Net power advertised is the power available at the engine flywheel when equipped with a fan at maximum speed, air cleaner, clean emissions module, and alternator.
- Actual gradeability may vary based on site conditions and machine configuration. Refer to the Operation and Maintenance Manual for more information.
- The air conditioning system on this machine contains the fluorinated greenhouse gas refrigerant R134a (Global Warming Potential = 1430). The system contains 0.8 kg (1.8 lb) of refrigerant, which has a CO<sub>2</sub> equivalent of 1.144 metric tonnes (1.261 tons).

VIBRATION SYSTEM	
Frequency (Standard)	28 Hz (1680 vpm)
Nominal Amplitude @ 28 Hz (1680 vpm)	
High	2.1 mm (0.083 in)
Low	0.98 mm (0.039 in)
Centrifugal Force @ 28 Hz (1680 vpm)	
Maximum	335 kN (75,234 lb)
Minimum	156 kN (35,163 lb)
VM Class at High Amplitude (Cab Configuration)	VM5
Static Linear Load	
CS16 – ROPS/FOPS Cab	48.8 kg/cm (273.5 lbs/in)
CS17 – ROPS/FOPS Cab	56.5 kg/cm (316.1 lbs/in)
CS19 – ROPS/FOPS Cab	63 kg/cm (352.8 lbs/in)

DIMENSIONS				
	CS16	CS17	CS19	CP16
Overall Length	6058 mm (19.9 ft)	6140 mm (20.1 ft)	6131 mm (20.1 ft)	6058 mm (19.9 ft)
Leveling Blade	6553 mm (21.5 ft)	—	—	6553 mm (21.5 ft)
Overall Width	2335 mm (7.7 ft)	2365 mm (7.8 ft)	2465 mm (8.1 ft)	2335 mm (7.7 ft)
Leveling Blade	2500 mm (8.2 ft)	—	—	2500 mm (8.2 ft)
Height – Top of Cab	3092 mm (10.1 ft)	3092 mm (10.1 ft)	3092 mm (10.1 ft)	3100 mm (10.2 ft)
Drum Width	2134 mm (84 in)	2134 mm (84 in)	2134 mm (84 in)	2134 mm (84 in)

# STANDARD & OPTIONAL EQUIPMENT

## SMOOTH DRUM MODELS (CS)

Features, standard and optional equipment may vary by region. Please check with your local Cat dealer for specific offerings and availability in your area.

OPERATOR ENVIRONMENT	STANDARD	OPTIONAL
ROPS/FOPS Canopy with Handrails, Floor Mat, Vinyl Seat	● CS12	
ROPS/FOPS Cab with Climate Control, Cloth Seat, Exterior Rear View Mirrors	● CS13, CS14, CS16, CS17, CS19	○ CS12
Sun Visor (Cab)		○
Roll-Down Screen (Cab)		○
Adjustable Seat with Integrated Console	●	
LCD Display with Lockable Vandalism Guard	●	
Adjustable Tilting Steering Column with Integrated Cup Holders	●	
Rear Vision Camera System with Color Touchscreen Display	●	
High Visibility 50 mm (2 in) Seat Belt	●	
High Visibility 76 mm (3 in) Seat Belt		○
12-Volt Power Outlet	●	
Horn, Backup Alarm	●	

VIBRATORY SYSTEM	STANDARD	OPTIONAL
Smooth Drum	●	
Removable Shell Kit – Oval or Square Pads		○
Pod-Style Eccentric Weight Housings	●	
Dual Amplitude, Single Frequency	●	
Variable Frequency		○
Auto-vibe Function	●	
Single Adjustable Steel Scraper	●	
Dual Adjustable Steel Scrapers		○
Dual Adjustable Polyurethane Scrapers		○
Leveling Blade		○ CS12, CS13, CS14, CS16

TECHNOLOGY SOLUTIONS	STANDARD	OPTIONAL
VisionLink™	●	
Machine Drive Power (MDP)		○
Compaction Meter Value (CMV)		○
GPS Mapping		○
Command for Compaction		○
Cat Detect with Smart Camera*		○
Cat Detect with Surround Cameras*		○
Cat Seat Belt Reminder*		○

\*Available as a Cat dealer installed aftermarket kit.

POWERTRAIN	STANDARD	OPTIONAL
Cat C4.4 Engine	●	
Air Cleaner, Dual Element	●	
Three Speed Throttle Switch including Eco-mode	●	
Automatic Speed Control (ASC)	●	
Dual Propel Pumps; One for Drum Drive, One for Rear Axle	●	
Fuel Filter, Water Separator, Priming Pump, Water Indicator	●	
Tilting Radiator / Hydraulic Oil Cooler	●	
Dual Braking System	●	
Two-Speed Hydrostatic Transmission	●	
Limited Slip Differential	●	
Transmission Guard		○

ELECTRICAL	STANDARD	OPTIONAL
24-Volt Electrical System	●	
100-Amp Alternator	●	
750 Cold-cranking Amps Battery Capacity	●	

OTHER	STANDARD	OPTIONAL
Lockable Engine Enclosure, Hydraulic and Fuel Tanks	●	
Sight Gauges for Hydraulic Oil Level and Radiator Coolant Level	●	
Scheduled Oil Sampling (S•O•S <sup>SM</sup> ) Ports: Engine Oil, Hydraulic Oil, and Coolant	●	
Factory Filled Bio-Hydraulic Oil		○
Halogen Working Lights (4)	●	
Halogen Working Lights (8)		○
LED Working Lights (8)		○
Amber Rotating Beacon		○



# STANDARD & OPTIONAL EQUIPMENT

## PADFOOT DRUM MODELS (CP)

Features, standard and optional equipment may vary by region. Please check with your local Cat dealer for specific offerings and availability in your area.

OPERATOR ENVIRONMENT	STANDARD	OPTIONAL
ROPS/FOPS Canopy with Handrails, Floor Mat, Vinyl Seat	● CP12	
ROPS/FOPS Cab with Climate Control, Cloth Seat, Exterior Rear View Mirrors	● CP14, CP16	○ CP12
Sun Visor (Cab)		○
Roll-Down Screen (Cab)		○
Adjustable Seat with Integrated Console	●	
LCD Display with Lockable Vandalism Guard	●	
Adjustable Tilting Steering Column with Integrated Cup Holders	●	
Rear Vision Camera System with Color Touchscreen Display	●	
High Visibility 50 mm (2 in) Seat Belt	●	
High Visibility 76 mm (3 in) Seat Belt		○
12-Volt Power Outlet	●	
Horn, Backup Alarm	●	

VIBRATORY SYSTEM	STANDARD	OPTIONAL
Padfoot Drum – Oval or Square Pads	●	
Pod-Style Eccentric Weight Housings	●	
Dual Amplitude, Single Frequency	●	
Variable Frequency		○
Auto-vibe Function	●	
Dual Adjustable Steel Scrapers	●	
Leveling Blade		○

TECHNOLOGY SOLUTIONS	STANDARD	OPTIONAL
VisionLink™	●	
Machine Drive Power (MDP)		○
GPS Mapping		○
Command for Compaction		○
Cat Detect with Smart Camera*		○
Cat Detect with Surround Cameras*		○
Cat Seat Belt Reminder*		○

\*Available as a Cat dealer installed aftermarket kit.

POWERTRAIN	STANDARD	OPTIONAL
Cat C4.4 Engine	●	
Air Cleaner, Dual Element	●	
Three Speed Throttle Switch including Eco-mode	●	
Automatic Speed Control (ASC)	●	
Dual Propel Pumps; One for Drum Drive, One for Rear Axle	●	
Fuel Filter, Water Separator, Priming Pump, Water Indicator	●	
Tilting Radiator / Hydraulic Oil Cooler	●	
Dual Braking System	●	
Two-Speed Hydrostatic Transmission	●	
Limited Slip Differential	●	
Transmission Guard		○

ELECTRICAL	STANDARD	OPTIONAL
24-Volt Electrical System	●	
100-Amp Alternator	●	
750 Cold-cranking Amps Battery Capacity	●	

OTHER	STANDARD	OPTIONAL
Lockable Engine Enclosure, Hydraulic and Fuel Tanks	●	
Sight Gauges for Hydraulic Oil Level and Radiator Coolant Level	●	
Scheduled Oil Sampling (S•O•S <sup>SM</sup> ) Ports: Engine Oil, Hydraulic Oil, and Coolant	●	
Factory Filled Bio-Hydraulic Oil		○
Halogen Working Lights (4)	●	
Halogen Working Lights (8)		○
LED Working Lights (8)		○
Amber Rotating Beacon		○



オフロード法2014年  
基準適合

For more complete information on Cat products, dealer services and industry solutions, visit us on the web at [www.cat.com](http://www.cat.com)

Materials and specifications are subject to change without notice. Featured machines in photos may include additional equipment. See your Cat dealer for available options.

© 2025 Caterpillar. All Rights Reserved. CAT, CATERPILLAR, LET'S DO THE WORK, their respective logos, "Caterpillar Corporate Yellow", the "Power Edge" and Cat "Modern Hex" trade dress as well as corporate and product identity used herein, are trademarks of Caterpillar and may not be used without permission.

VisionLink is a trademark of Caterpillar Inc., registered in the United States and in other countries.

Based on the Labor, Safety and Health Laws in Japan, employer of small construction equipment are required to provide specific training for all operators on machines with ship weight less than 3 metric ton. For machines greater than 3 metric ton, operator needs to obtain operator license certification from a Government approved registered training school.

[www.cat.com](http://www.cat.com) [www.caterpillar.com](http://www.caterpillar.com)

QEHQ3191 (09/2025)  
Build Number: 03A  
(N Am, Europe, Türkiye, Japan)

