

# GOVERNMENTAL SOLUTIONS

SUMMER 2025

A CATERPILLAR PUBLICATION SERVING GOVERNMENTAL AGENCIES



## CLEARING **THE WAY**

CATERPILLAR AIDS LOS ANGELES WILDFIRE RECOVERY

**NEW** CAT® MH3032  
MATERIAL HANDLER  
IMPROVE EFFICIENCY. ENHANCED PRODUCTIVITY

**CATERPILLAR®**





# CAT® MH3032 MATERIAL HANDLER

## IMPROVE EFFICIENCY. ENHANCED PRODUCTIVITY

Perfectly positioned between the Cat® MH3026 and MH3040 Material Handlers, both already based on the next-generation platform, the new MH3032 Material Handler calls on the same criteria to deliver outstanding performance, durability and reliability in a technology-driven design.

Material handling is all about efficiency. How can you move and sort waste, scrap, or recycled materials—in as little time as possible, with as few moves as possible, using as little fuel as possible—without compromising safety and operator comfort?

With nearly a 49-ft. reach, the MH3032 is available with drop-nose and straight-stick options for maximum configurability. Typical scrap materials are easily handled by the Cat orange-peel grapple with a capacity of 35 cu. ft. An optional 20 kW generator powers magnet attachments for even greater versatility.

Operating ease and optimum productivity are provided by Cat Payload, the built-in technology enables operators to see how much they're lifting in each load while constantly monitoring tonnage output.

Also standard on the MH3032 is Cat 2D E-fence, which keeps the arm within a predefined work area away from the elevated cab, providing greater operator confidence while protecting the machine from damage and helping improve site safety. This is combined with a new Swing Assist feature, which automatically stops the swing

motion at an operator-defined, preset point.

"These technologies not only help reduce operator fatigue associated with repetitive tasks, but also help improve site safety," says Vincent Migeotte, a Caterpillar senior product and sales consultant. "Optimized movements also mean incremental improvements in both time and fuel consumption."

The safety theme continues into the dedicated Material Handler cab, where an in-cab monitor displays dual external camera views to maximize visibility and hazard awareness.

Although the 33-ton MH3032 joins the material handler lineup as a completely new model, it uses proven components common to the rest of the MH3000 Next Generation product line. This assures tried and tested performance, reliability and easy parts availability without operators having to compromise on class or versatility.

Power for the MH3032 follows the same principle: its Cat C7.1 engine is one of Caterpillar's most modular and compact power units, meeting U.S. EPA Tier 4 Final standards. The engine is coupled with long-life filters, fewer hoses and check points, enabling extended maintenance intervals for further operational savings.

***For more information about the new Cat MH3032 Material Handler, contact our dealership. ☎***



# GOVERNMENTAL SOLUTIONS

SUMMER 2025

## CONTENTS

### 4 Cat® Medium Wheel Loaders

Technology options enhance performance and safety



### 6 Clearing The Way

Caterpillar Aids Los Angeles Wildfire Recovery

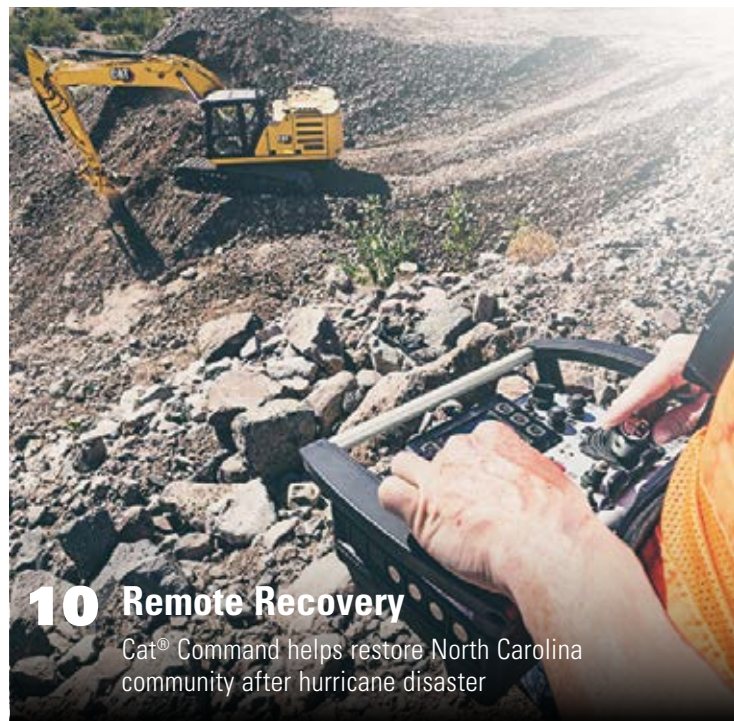
### 9 From the Archive

The First Motor Grader



#### ON THE COVER:

In January, a series of destructive wildfires raced across the Los Angeles metropolitan area. A global disaster relief organization partnered with Caterpillar to clear and haul away 92 metric tons of debris from the Pacific Palisades Presbyterian Church.



### 10 Remote Recovery

Cat® Command helps restore North Carolina community after hurricane disaster

### 13 Landfill Compactor Wheels

Options for Maintaining Performance

### 14 NEXT GEN Skid Steer Loaders

Enhanced Performance. Operator Comfort. Advanced Technology

### 15 Cat® Centennial Machines

The Limited Edition models feature a custom "Centennial Grey" paint scheme

*Governmental Solutions* is published by High Velocity Communications Inc. on behalf of Caterpillar and your Cat Dealer. Editor, John Rondy • Creative Director, Jay Blazek • Director of Client Services, Kelly Pemper. Every effort has been made to ensure specifications are accurate. Because specifications are subject to change without notice, check with us, your Cat Dealer, for the latest equipment information. Some photography provided courtesy of Caterpillar Inc. High Velocity Communications Inc., 1720 Dolphin Drive, Suite D, Waukesha, WI 53186-1489. Phone (262) 544-6600. Please submit address corrections and changes via e-mail to: Kelly@HighVelocityCommunications.com. © 2025 High Velocity Communications Inc. Printed in the U.S.A. **Volume 25 Number 2.** © 2025 Caterpillar. All Rights Reserved. CAT, CATERPILLAR, LET'S DO THE WORK, their respective logos, "Caterpillar Yellow", the "Power Edge" and Cat "Modern Hex" trade dress as well as corporate and product identity used herein, are trademarks of Caterpillar and may not be used without permission. VisionLink® is a trademark of Trimble Navigation Limited, registered in the United States and in other countries.

**CAT.COM/GOVERNMENTAL**

Includes complete specifications for all machines. Learn more online.





# CAT<sup>®</sup> MEDIUM WHEEL LOADERS

## TECHNOLOGY OPTIONS ENHANCE PERFORMANCE AND SAFETY

Fully integrated for optimal performance, Cat<sup>®</sup> medium wheel loaders can be easily upgraded with optional technologies as work requirements demand. Available for Cat 950 through 982 Wheel Loaders, including XE models, these next generation machines are infused with the latest technologies to advance safety and help customers work faster with greater accuracy.

### Operating safety

Starting with a foundation of the standard HD rear camera including an integrated touchscreen, Cat medium wheel loaders provide a progressive building block of optional technologies, including the Multiview (360°) Vision System, Rear Object Detection and now Collision Warning System with Motion Inhibit.

The new system uses radar and vision sensors to detect potential hazards, alert operators and inhibit motion when reversing from a stationary position. Targeting collision potentials that emerge from behind the loader, the Collision Warning System leverages both smart camera and radar to provide audible and visual alerts that help operators see, mitigate and manage hazards which otherwise might go unnoticed. The system's three color zones – yellow for awareness, amber for caution and red for critical—approximate the distance of the object to the loader's anticipated path.

The embedded Motion Inhibit feature prevents direct

reverse gear engagement when shifting from neutral and automatically applies the brake when the system detects an object or worker in the critical-alarm zone behind the loader. When this occurs, an on-screen notification alerts the operator.

If the loader is stationary for at least 15 seconds and the operator shifts from park to reverse, Motion Inhibit prevents the machine from engaging reverse when the rear detection system identifies something in the critical alarm zone. The loader will reverse once the operator shifts back into neutral and steers to clear the detected object or person.







People Detection utilizes the smart camera to alert the operator when a person is detected behind the loader. Three alert levels dynamically adjust based on the person's proximity to the machine, and the system highlights people in red bounding boxes as the in-cab monitor distinguishes and manages the potential risk.

### Payload accuracy

Standard Cat Payload delivers precise bucket load information with on-the-go weighing to help prevent overloading or underloading. Upgrading to the Advanced Payload system expands automation features and capabilities, including automatic tip-off assist for the final bucket process to help precisely meet target payloads. A new multitask mode within Advanced Payload tracks two loading processes simultaneously, while split mode facilitates loading multiple bodies, tracking individual targets, and tabulating grand totals for each load.

Optional Cat Advanced Payload is a system upgrade that provides expanded features and capabilities. Top-off assist adds automation to the final bucket process. Multitask mode tracks two loading processes simultaneously. Split mode allows for loading multiple bodies while tracking individual targets and grand totals.

### Efficiency building blocks

From material handling and truck loading to general construction and stockpiling, the Cat medium wheel loader integrated technologies help operators of all skill levels work more efficiently and productively with less fatigue. These new technologies increase the machine's capabilities by

building on standard and optional features already available, including:

- **Auto Set Tires** - Helps operators with proper digging technique and improves bucket fill factors.
- **Autodig** - Performs a full dig cycle automatically for the operator upon detecting a dig condition.
- **Programmable Kickouts** - Automates repetitive tilt, lower and lift functions to reduce operator fatigue.
- **Machine Speed Limit** - Provides two limit options that control the loader's top speed.
- **Tire Pressure Monitoring System** - Helps operators maintain recommended air pressure.
- **Remote Flash** - Enables downloaded software updates to be initiated from the on-board display.
- **Remote Troubleshoot** - Remotely connects the loader to the dealer's service department to quickly and efficiently diagnose fault codes.

Removing the operator from the machine, Command for Loading technology provides remote control of next generation medium wheel loaders. An ergonomic Command console enables line-of-sight remote control of basic machine functions such as startup/shutdown, bucket rack/dump and lift/lower. For non-line-of-sight operation, the Command Station can connect to multiple machines and enable the user to operate one machine at a time, either on-site or from miles away.

***For more information about these new technology upgrades for Cat® Medium Wheel Loaders, contact the application experts at our dealership. 📞***



# CLEARING THE WAY

## CATERPILLAR AIDS LOS ANGELES WILDFIRE RECOVERY

From January 7<sup>th</sup> to the 31<sup>st</sup>, a series of 14 destructive wildfires raced across the Los Angeles metropolitan area and San Diego County. The fires were exacerbated by drought conditions, low humidity, a buildup of vegetation from the previous winter, and hurricane-force Santa Ana winds, which in some places reached 100 mph.

The wildfires killed at least 30 people, forced more than 200,000 to evacuate, destroyed more than 18,000 homes and structures, and burned over 57,000 acres (89 sq. mi.) of land in total. The wildfires resulted in economic loss and property damage of an estimated \$60 billion.

Most of the damage was caused by the two largest fires: the Eaton Fire in Altadena and the Palisades Fire in Pacific Palisades, both of which were fully contained on January 31<sup>st</sup>.

During a multi-week project, a global disaster relief organization partnered with Caterpillar to clear and haul away 92 metric tons of debris from the Pacific Palisades Presbyterian Church that was completely destroyed in the Palisades Fire.

As the non-profit Community Organized Relief Effort (CORE) launched a multifaceted response to meet the urgent needs of impacted families, CEO Ann Lee reached out to her old friend, Jim VanLue, a Caterpillar GCI Market System Application Specialist, for support.

In 2010, Lee had been living in Haiti for four years when the devastating 7.0 earthquake struck Port-au-Prince. VanLue was working as an equipment operator in Mexico City and immediately organized a team to send vital equipment to assist with search and recovery operations. Ann and Jim's paths first crossed during those early days of the response. They formed an immediate bond as they took on the difficult work of sifting through and clearing rubble.

Jim spent 31 days in Port-au-Prince, working closely with Ann as the community tackled the destruction and seemingly insurmountable loss. He and his team from Caterpillar cleared massive piles of debris. Jim, Ann and the teams worked closely to clear roads of debris and take down government buildings, while recovering the deceased for return to their families.

Within the month, the Caterpillar team trained Ann and her teammates how to manage a cadre of heavy equipment operators. That led to CORE removing millions of cubic meters of debris, and taking down the Presidential Palace in Port-au-Prince.

Jim and Ann stayed in touch over the years, as CORE grew into the global humanitarian organization that it is today. And 15 years later, they were back on the front lines again in Los Angeles following the wildfires.



## Counting on Caterpillar

As CORE launched a multifaceted response in Los Angeles to meet the urgent needs of impacted families, Ann reached out to Jim seeking Caterpillar's support.

"Jim was the first person that I thought of," she said. "It was just huge. And the generosity of Caterpillar offering his time and skills. He helped us during the procurement process to find a vendor. He also knew how to optimize our time by utilizing the right types of heavy equipment."

Jim jumped right in, eager to help his longtime friend. He took the request up the ladder, mobilizing Caterpillar equipment and graciously donating his time and expertise. In March, he flew in from Colorado to manage the contractors hired by CORE to clear out the first site, the Rubio Cañon water reservoirs in Altadena.

The Eaton Fire consumed the reservoirs, burning and contaminating two tanks with ash and debris from surrounding homes and other structures. As a

result, nearly 10,000 people lost access to safe drinking water. Altogether, 45 tons of fire debris were removed from the reservoirs, paving the way for the next phase of restoration. That effort brought safe drinking water back to the people who rely on it every day.

## Safe operation

Wildfire recovery takes time, teamwork, and a commitment to safety—for the community and the crews on the ground. Removing fire debris isn't easy. It means dealing with hidden hazards and making sure everyone stays safe while getting the job done right.

"We want the operators to go home the same way they showed up to work," Jim said. "There's numerous safety features on all Cat machines to make sure that operators return safely home at the end of the day."

An important feature in wildfire cleanup is Caterpillar's cab filtration system, which is designed to keep out dirt, soot, sand and other contaminants, while also reducing

outside odors entering the cab.

"You'd see some of the other guys out here wearing masks," Jim said. "But the operators in the cabs of Cat machines are protected because the cabs are super, super tight, and the cab filters are cleaned out daily."

Also, 360° cameras were especially helpful while cleaning up debris in tight quarters at both sites.

"The biggest safety issue we faced in Altadena and then up in the Palisades was the close quarters that the machines had to work in," he said. "Having 360° cameras on the excavators has been invaluable. They help knowing where your counterweight is, and the proximity of people around you as you try to stay away from the walls. At Altadena, we had to stay away from the storage tanks, because they had five-foot walls, and we didn't want to damage them."

Another important safety feature was utilization of Cat 2D E-fence, which keeps the front linkage of an excavator within a predefined work area to avoid hazards. 2D E-fence uses data from position sensors to







automatically stop motion when the front linkage reaches the defined boundaries, enabling operators to work with greater confidence and reduced stress.

Jim said Cat E-Fence was especially valuable while clearing debris at the Altadena water storage facility.

"Having E-fencing on the excavators meant that we had floor and ceiling protection, side-to-side and wall protect, and also cab avoidance. That proved very valuable in Altadena. The storage tanks were two to five feet above ground, and 50 feet below ground. So, by setting floor protect on the machine, we were able to accomplish that task without doing any damage to the concrete floors and the walls. So, it was very helpful having the E fencing while working in there."

Additionally, Cat Payload technology was useful as a 330 Hydraulic Excavator loaded debris into haul trucks, Jim said, enabling operators to see how much they were lifting in every bucket load and when they reached optimum hauler capacity.

## Hope for the future

During the demolition process at the church in Pacific Palisades, CORE and the Caterpillar team ensured that care and respect were present on site. With that in mind, the teams salvaged one of the large crosses at the top of the tower on the corner of their property, facing out towards the community, which had survived the fire and served as a sign of hope for the congregation.

The critical work not only rids the surrounding community of tons of toxic material from the decades-old structure, but it also gives the church a clean slate to start the rebuilding process. And just being there to lend a hand has meant a lot to the congregation.

In an interview with ABC TV 7, pastor Matt Hardin said:

"To the people involved in doing this important work, CORE, their donors, so many people who've gotten us to this point—we feel so thankful."

Since reconnecting with Ann, Jim was reminded of CORE's commitment to serving communities in crisis, no matter the roadblocks.

"I've built a lot of relationships with my customers, with my own team, and with dealers, but it's nothing compared to the relationship that Ann and I built starting 15 years ago," Jim said. "I consider her a part of my family." 🙏





# 30

# AUTO PATROL

## THE FIRST MOTOR GRADER

In an era when grading roads required both a tractor and a grader frame, Caterpillar developed a better way. After acquiring the Russell Grader Manufacturing Company, leaders from both companies combined their technologies in 1931, creating the Auto Patrol, the world's first motor grader.

Moving the engine to the back of this machine gave operators a better view of the blade, while the engine accumulated less debris. It was a win-win scenario for the operator and the machine.

The powertrain's weight was perfectly distributed across the blade and front and rear axles, providing the ideal blade pressure.

The purpose-built motor grader embodied several major design breakthroughs. Rather than adapting a grader to a separate wheeled or crawler tractor, the grader and power unit were designed as a complete, integral unit, riding on a common frame utilizing pneumatic tires with puncture-proof tubes.

The powertrain was designed specifically to power the grader with the greatest possible traction, blade pressure, and stability. Moreover, the weight and positioning of the powertrain on the frame served to distribute weight across the front and rear axles and the blade. The weights of the operator's

**The Diesel No. 12 became the most recognized, longest running machine in the Cat motor grader product line.**


compartment, power control mechanism, and the blade and circle assembly were designed to produce maximum blade pressure, traction, and resistance to side thrust.

The Auto Patrol was the first motor grader to use power-operated blade controls, eliminating hand wheels and cranks and enabling smaller adjustments to be made more quickly. The controls were operated

by a bank of levers: one to raise and lower each end of the blade, one to side-shift the circle, and one to turn the circle. A fifth lever raised and lowered the scarifier or a front V-snowplow.

For all its innovations, the Auto Patrol No. 9 was discontinued a year after introduction. Although motor grader design has evolved considerably since 1931, the basic concepts of the Auto Patrol are the standard of today's graders.

In 1938, the Caterpillar Diesel No.12 was successfully demonstrated to an enthusiastic group of Cat® dealers in Peoria, Illinois. Its design was unique and is the origin of modern motor graders. But in addition to being stylish, the No. 12 was also a heavy-duty, self-propelled road grader designed for efficient and economical road building and maintenance work.

The Diesel No. 12 became the most recognized, longest running machine in the Cat motor grader product line. 





# REMOTE RECOVERY

## CAT® COMMAND HELPS RESTORE NORTH CAROLINA COMMUNITY AFTER HURRICANE DISASTER

Every year, the Atlantic hurricane season impacts U.S. states along the Gulf Coast and the Eastern Seaboard. Last year, western North Carolina was hit by record-breaking storms, including Hurricane Helene.

The community of Vilas in Watauga County faced one of the storm's most catastrophic effects—a massive landslide, the largest the state had ever seen. Watauga County resident Roger Townsend recalled the moment the disaster struck.

“Down this holler came a 50-foot-high, 300-foot-wide wall of rocks, trees, stumps, and mud,” he said. “I said, ‘Lord, take care of me.’ And by the time that little prayer was done, this stuff was at my feet in the backyard. That’s how fast it happened.”

In the wake of Hurricane Helene, homeowners were left to deal with unimaginable destruction. Roads were washed out. Power lines and water infrastructure were wiped away. Internet access disappeared. The scale of the damage, especially in isolated mountain communities, left residents stranded and in urgent need of significant help.

That’s where the teams at Gregory Poole, the local Cat® dealership, and Caterpillar’s Cat Command

product group stepped in to help manage the massive earthmoving and recovery efforts.

“When I heard about the hurricane and knew the kind of disaster we were encountering, the first thing that came to my mind was to keep people safe,” said Greg Meckes, Technology Specialist at Gregory Poole. “Landslides like we encountered are the perfect example of where Cat Command comes into play.”

Cat Command enables operators to remotely control heavy equipment from safe locations—keeping the operators out of hazardous zones while enabling essential work to continue.

“The concern with that slide is, you can be operating on that material and potentially run into an instance where it could slide again on you,” Meckes added.

Matt Magnus, a product support rep for Caterpillar, echoed that observation:

“We anticipated the disaster would be significant, but didn’t know exactly what we’d run into. When we got here, the devastation was massive. Roads were closed, everyone was scrambling to help one another,” Magnus said.

“The great thing about Command, especially in



disasters like this, is taking the operator out of the harmful situation and putting the machine where it's needed most."

### Efficient operation

"In the past, it's always been safety at the expense of productivity," said Alan Pumklin, Cat Command Specialist at Caterpillar. "Cat Command has a unique ability to do both. It has all the built-in safety and automation features that make operating much more efficient, even in disaster zones."

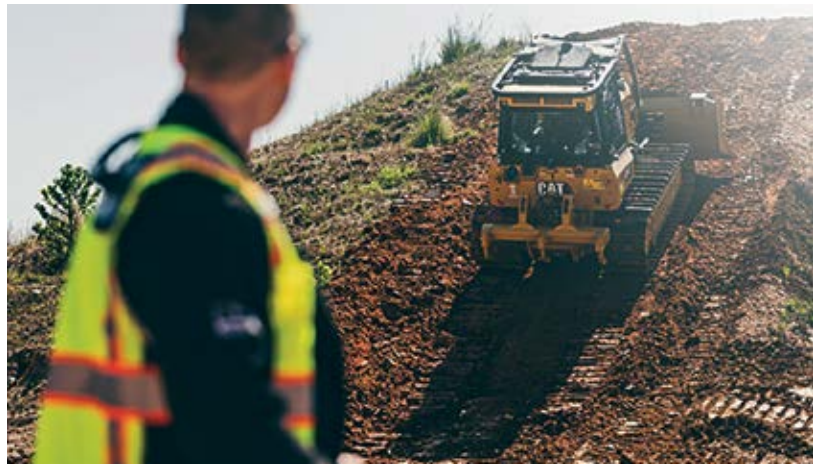
The teams working in North Carolina brought in mobile trailers equipped with power generation and satellite connectivity to ensure full operation with minimal infrastructure.

"These machines are self-sufficient. They run off generator power. We use satellites and point-to-point networks that connect to them," Magnus said. "That lets us operate even when the traditional infrastructure is down."

Accessing the worksite itself presented some unique challenges.

"Google Maps doesn't know which roads were closed," Meckes said. "We were hauling a 30-foot trailer up winding mountain switchbacks. We might've scraped some paint off the bottom of the trailer, but we got there."

*Continued on page 12*





Despite the logistical difficulties, the team's priority was always clear: restore essential services and help the community rebuild.

"One of our first priorities was cutting roads to provide access for the power companies," Pumklin said. "Power is essential—these folks are on wells. Without electricity, they can't even access clean water."

### Speeding the recovery

By the time the Caterpillar teams left Vilas, roads were reopened and electricity was restored. But more

than that, the collaboration between Gregory Poole, Caterpillar, and the local residents showcased what it truly means to rally around a community in need.

"This is private property—people couldn't do this work themselves, or pay for this kind of massive earthmoving project," said Meckes.

"But we came together, organized, worked with multiple people throughout this project to get to where we are now. It means a lot to them. That's giving back in its truest form." 🚧

## Remote Technology Keeps Operators Safe

Remote control lets operators work away from site hazards—such as dust, noise, vibration, or unstable terrain. It also eliminates the risk of injury from climbing on and off machines in less than ideal conditions. The safety benefits of Cat Command include:

- Removing operators from hazardous jobsite conditions.
- Eliminating operator risk from wall collapses, falling debris, steep slopes, and machine rollovers.
- Preventing injuries from slips, trips, and falls.
- Using multiple redundant safety systems that automatically shut down motion if communications are lost or faults are detected.

The Cat Command Station enables remote operation of dozers, excavators, and wheel loaders from a secure, indoor location—whether that's a trailer onsite or a facility miles away. Operators benefit from multiple video views, familiar controls, and full machine visibility while seated in a safe location. Some of the benefits of Cat Command include:

- Reduces operator fatigue with a comfortable indoor working environment.
- Operator inputs are sent directly to the machine electronics via a dedicated radio transmitter/receiver, resulting in real-time work tool control.
- Controls deliver the same response time as in the cab, maintaining precise control of machine functionality.
- High-quality video delivers a clear view of the work area.
- Operators can easily switch between machines, or change jobsites with no downtime.
- Maintains the option to utilize other advanced control technologies such as Cat Grade, Payload, Detect and other machine Assist features.
- Enables trainers to stand beside an operator, without noise or movement.



For line-of-sight operation, the Cat Command Console enables the user to work safely and comfortably outside the machine, while remaining onsite and in direct visual contact. The console provides line-of-sight operation from distances up to 437 yards away.

- Operator inputs are sent directly to the machine electronics via a dedicated radio transmitter/receiver, resulting in real-time machine control.
- Up to 10 hours of continuous operating time, with a charging time of four hours or less.
- Does not require any on-site communications infrastructure.
- Utilizes a secured 2.4 GHz radio connection.
- The machine will shut down if the Console is tipped more than 45 degrees, indicating that the operator may have fallen.

The All Stop/Autonomous Stop (A-Stop) system provides a way to remotely stop a Command-equipped machine. The A-Stop radio communication system consists of an A-Stop receiver installed on the machine and a handheld transmitter.





# LANDFILL COMPACTOR WHEELS

## OPTIONS FOR MAINTAINING PERFORMANCE

Move efficiently and effectively through waste material with Cat® landfill compactor wheels. Visit our dealership to rebuild and swap one or all four wheels, hassle-free.

Over time, exposed surfaces on the wheels of Cat 826 and 836 Landfill Compactors wear down, leading to decreased wheel performance. Refurbishment provides a lower-cost repair option compared to replacing the entire wheel or an entire set of four. Refurbishment can include:

- Reusing
- Rebuilding
- Re-tipping

Our finished wheel rebuilds provide:

- Optimal performance
- Reduced wear
- Higher ground clearance
- Substantial cost savings

Keep your landfill sustainable and profitable with welded assemblies designed to maximize compaction, while optimizing machine drivetrain performance.

With our extensive industry experience, we have dedicated waste experts ready to help. We understand unpredictable loads, harsh environments, and unstable underfoot conditions. Plus, our wire guard option prevents waste from wrapping around the axle. Benefit from Cat quality and reliability and enjoy:

- Minimal downtime
- Rebuilt-to-new wheel specifications
- New wrapper with factory-installed tips

## Wheels with teeth

Maximize your landfill compactor wheel life and choose from multiple compaction wheel tip options:

- **Diamond** – Longest life tip on the market (15,000-hour warranty)
- **Paddle** – Designed to shred waste (10,000-hour warranty)
- **Plus tip** – Ideal for construction and demolition waste (10,000-hour warranty)
- **Combo** – Optimized for stability, traction and compaction density (10,000-hour warranty)

## Reman option

When the wrapper thickness is worn too far to allow another retip, a Reman compactor wheel can provide a cost-effective replacement option. Reman wheels are 100 percent rewrapped providing a service option that should provide at least two lives. The wheels are available in various tip configurations to support varying conditions.

## Wheel maintenance services

Proper compactor wheel maintenance can extend component life, reduce unplanned repairs, and provide insight to the planning of wheel rebuilds or replacements. Routine inspections and wear management are the primary maintenance activities for compactor wheels.

**Contact our dealership to discuss your rebuild options and choose the best one for your agency.** 📞





# NEXT GEN SKID STEER LOADERS

## ENHANCED PERFORMANCE. OPERATOR COMFORT. ADVANCED TECHNOLOGY

Cat® Next Generation Skid Steer Loaders (SSLs) provide significant upgrades from the previous D3 series, providing enhanced performance, operator comfort, and advanced technology integration. Key features include:

- **Enhanced Power and Torque:** The new models feature substantial torque increases—13% for the 250 and 260, 35% for the 270—resulting in improved working performance.
- **Vertical Lift Design:** All models utilize a vertical lift design, providing significant increases in lift height, breakout forces, and rated operating capacities (ROC), enhancing loader flexibility and performance.
- **Redesigned Cab for Operator Comfort:** The cabs are 22% larger with 26% more foot space, providing improved visibility and comfort. Optional features include a ventilated and heated high-back air ride seat, and an advanced touchscreen monitor.
- **Advanced Hydraulics:** A new closed-center auxiliary hydraulic system enables operation of

all Cat Smart Attachments with standard hydraulics. High Flow and High Flow XPS options are available, increasing hydraulic flow and pressure for demanding attachments.

- **Improved Stability and Visibility:** A redesigned engine compartment places the engine and cooling package lower into the frame, enhancing stability and providing better rear visibility.

### 250 SSL

- **Engine:** Cat C2.8T, 74.3 HP
- **Torque:** 221 lb-ft
- **Lift Height:** 124 inches (3 inches more than 242D3)
- **Tilt Breakout Force:** 36% increase over 242D3
- **ROC @ 50%:** 2,916 lb
- **Hydraulics:** Standard Flow (23 gpm), High Flow XPS (30 gpm at 4,061 psi)

### 260 SSL

- **Engine:** Cat C2.8T, 74.3 HP
- **Torque:** 221 lb-ft

- **Lift Height:** 132 inches (7 inches more than 262D3)
- **Tilt Breakout Force:** 27% increase over 262D3
- **ROC @ 50%:** 3,390 lb
- **Hydraulics:** Standard Flow (23 gpm), High Flow XPS (34 gpm at 4,061 psi)

### Cat 270 & 270 XE SSLs

- **Engine:** Cat C3.6TA, 111 HP (270), 134 HP (270 XE)
- **Torque:** 370 lb-ft (270), 406 lb-ft (270 XE)
- **Lift Height:** 133.5 inches (6.4 inches more than 272D3)
- **Tilt Breakout Force:** 11% increase over 272D3
- **ROC @ 50%:** 3,914 lb (270), 4,372 lb (270 XE)
- **Hydraulics:** Standard Flow, High Flow, High Flow XPS (up to 40 gpm at 4,496 psi)

*To learn more about the next generation of Cat® Skid Steer Loaders, contact our dealership. 📞*



# Cat® Centennial MACHINES

THE LIMITED EDITION MODELS FEATURE  
A CUSTOM “CENTENNIAL GREY”  
PAINT SCHEME THAT RECOGNIZES THE  
ORIGINAL COLOR OF CATERPILLAR’S  
FIRST PRODUCTS



In 1925, Holt Manufacturing Company and C.L. Best Tractor Co. merged to form the Caterpillar Tractor Company. Prior to the merger, Holt had a contract to provide track-type tractors to the government during World War I. The contract enabled Holt to produce a significant number of machines with a major focus on production.

While Holt focused on the war effort, Best gained customers in the United States with new and innovative designs. Following the war, Holt had a worldwide reputation and modern manufacturing facilities, while Best had a domestic presence, an advanced dealer network and a significantly expanded product line.

The merger provided the new company with funds and technological resources to invest in diesel innovations designed to provide more economical horsepower. The rest, as they say, is history.

In honor of its 100 Year Anniversary, Caterpillar Inc. is pleased to announce Cat® Limited Edition machines are available for purchase through select Cat dealers around the world. Along with the latest machine technologies that Cat customers have come to expect, the Limited Edition models feature a custom “Centennial Grey” paint scheme to recognize the original color of Cat products.


“We could not have reached this historic milestone without our customers and dealers,” said Tony Fassino, group president of Caterpillar Construction Industries. “Since 1925,

customers have used our products and services to help improve the quality of people’s lives throughout the world. The Limited Edition 100 Year Anniversary machines enable our customers to celebrate Caterpillar’s heritage, while focusing on the work ahead.

“Few companies are fortunate enough to make it to this point, and we know how we got here,” Fassino said. “It’s because of our long-standing reputation for innovation, as well as the exceptional collaborations we’ve had with our dealers and customers over the past ten decades.”

The models also include special markings denoting 100 Years and a commemorative interior plate. The models—which are available in North and South America, Europe, Africa, the Middle East and Asia—include:

- Compact, Small and Medium Wheel Loaders
- Backhoe Loaders
- Skid Steer Loaders
- Compact Track Loaders
- Small and Medium Track Type Tractors
- Mini, Small, Medium and Large Excavators
- Motor Graders

***The Cat Limited Edition machines will be displayed at select Centennial celebrations and trade shows. Contact our dealership to determine availability. ***



YOU CAN SEE

MORE ACCURACY  
& EFFICIENCY

YOU CAN'T SEE

INTEGRATED  
HARDWARE &  
SOFTWARE

YOU CAN SEE

BETTER BLADE &  
BUCKET CONTROL

YOU CAN'T SEE

COMPATIBLE  
TECHNOLOGY

## FACTORY INTEGRATED CAT® GRADE 3D. IT'S WHAT YOU CAN'T SEE THAT MAKES THE DIFFERENCE.

When you buy a Cat® machine with factory-integrated CAT GRADE 3D, you'll clearly see how it can help your operators get to design plan faster, with improved accuracy and efficiency thanks to features like automated blade and bucket control.

But there's also a lot that you can't see that can make a big difference:

- The technology is specifically designed for a **seamless fit**.
- It's **automatically compatible** with other technology.
- The hardware is **fully integrated** within the machine.

To find out more visit [cat.com](http://cat.com) or contact your local Cat dealer.