

NURSERY GRAPPLE

SKID STEER LOADERS,
COMPACT TRACK LOADERS,
COMPACT WHEEL LOADERS



Machine Compatibility

216B3, 226D3, 232D3, 236D3, 239D3, 242D3, 246D3, 249D3, 259D3,
262D3, 272D3, 279D3, 289D3, 299D3, 250, 255, 260, 265, 270, 275, 285

903, 906, 907, 908

Current machines listed. Machine model availability and attachment vary by region.
Contact your local Cat® dealer for exact compatibility and availability.



The Cat® nursery grapple is ideal for handling ball and burlap trees as well as large potted plants at nursery sites and in landscaping applications. The pivoting grapple design allows operator to grab the plant with the paddle arms and then reorientate it in numerous positions.

FEATURES



Paddles are shaped to wrap around the root ball without damaging the root system or tree.



Pivoting grapple design manipulates root ball into various orientations, swinging left or right and tilting down for better control and placement.



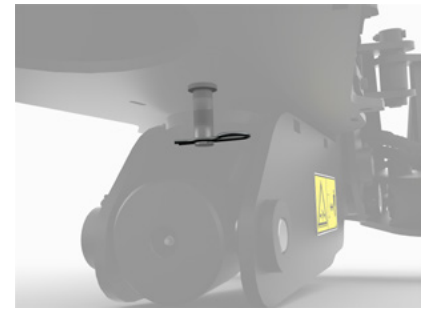
Large capacity with the ability to handle root balls ranging from 711-1321 mm (28-52 in) in size.



Heavy duty bolt-on serrated step provides secure footing for operators entering and exiting machines.



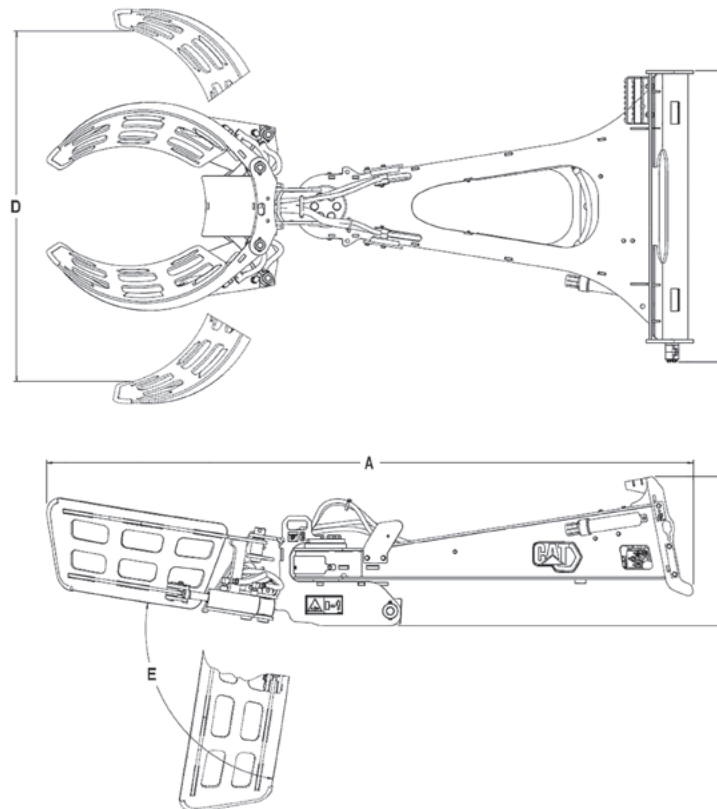
Operation and Maintenance Manual is tool mounted and sealed from the elements. Holder includes all the operation manual and maintenance guides required for proper operation of the work tool.



Locking pin allows for the head to be secured for easier and safer transportation.



SPECIFICATIONS



Model	Nursery Grapple
A Overall Length	2780 mm 109.4 in
B Overall Width	1227 mm 48.3 in
C Overall Height	633 mm 24.9 in
D Maximum Grapple Opening	1012 mm 39.8 in
E Tilt Angle	90°
Swing Angle (left/right)	89°
Maximum Root Ball Diameter	1321 mm 52 in
Weight	451 kg 994 lb
Optimal Hydraulic Flow	49-87 l/min 13-23 gpm
Optimal Hydraulic Pressure	170-241 bar 2,500-3,500 psi
Maximum Lifting Capacity	1361 kg 3,000 lb
Interface Type	Skid Steer Coupler
Required Hydraulics	Standard Flow, 14-Pin Electrical*
*Or an 8-to-14 pin conversion harness for use with certain compact wheel loaders.	



Standard two year warranty gives you peace of mind when purchasing a quality Cat nursery grapple attachment.

For more complete information on Cat products, dealer services and industry solutions, visit us on the web at www.cat.com

AEHQ8421-00 (08-2025)
(Global)

© 2025 Caterpillar. All Rights Reserved.

Materials and specifications are subject to change without notice. Featured machines in photos may include additional equipment. See your Cat dealer for available options.

CAT, CATERPILLAR, LET'S DO THE WORK, VisionLink™, their respective logos, "Caterpillar Corporate Yellow," the "Power Edge" and Cat "Modern Hex" trade dress as well as corporate and product identity used herein, are trademarks of Caterpillar and may not be used without permission.

www.cat.com www.caterpillar.com

