



**CATERPILLAR OEM SOLUTIONS** MACHINES » POWER MODULES » UNDERCARRIAGE » COMPONENTS » AFTERMARKET & SERVICES



# OEM SOLUTIONS PRODUCT PORTFOLIO

PURPOSE-BUILT SOLUTIONS FOR SPECIALTY APPLICATIONS





CATERPILLAR OEM SOLUTIONS

# PROVEN MACHINES & COMPONENTS FOR SPECIALTY APPLICATIONS.

MACHINES » POWER MODULES » UNDERCARRIAGE » COMPONENTS » AFTERMARKET & SERVICES





**Caterpillar OEM Solutions works with Original Equipment Manufacturers (OEMs) to integrate partial Cat® machines, technologies, systems, and components into their product offerings.**

Incorporating proven Cat® content allows OEMs to leverage Caterpillar's robust designs with global support from the Cat dealer network for parts and service. Since 1965, Caterpillar OEM Solutions has evolved and adapted to continuously bring our customers and dealers the products, services, and support they expect from Caterpillar.

**Our goal is to maximize Caterpillar content for specialty OEM machines, providing the benefit of Caterpillar quality, reliability, serviceability, and availability.**



# MACHINES

## **Cat® Water Solutions:**

777 (07), 777 (05), 785 (04), 789 (04)

## **Off-highway Truck Bare Chassis:**

770, 772, 773, 775, 777, 785, 785 (04), 789 (04)

## **Articulated Truck Bare Chassis:**

725, 730, 735, 740, 745

## **Partial Wheel-Tractor Scrapers:**

621, 631, 651

## **Frontless Mining Shovels:**

6015, 6020, 6030, 6040, 6060

## **Partial Wheel Loaders:**

950, 962, 966, 972, 980, 982, 988

## **Motor Graders:** 120

## **INDUSTRY / APPLICATION:**

Mining, Quarry, Water Distribution,  
Construction, Industrial, Towing,  
Hauling, Underground

# POWER MODULES

## **Engines:**

### **C9.3B – C18**

(224 kW – 571 kW / 300 hp – 766 hp)

### **C27 – C32B**

(652 kW – 970 kW / 874 hp – 1,301 hp)

## **Transmissions:**

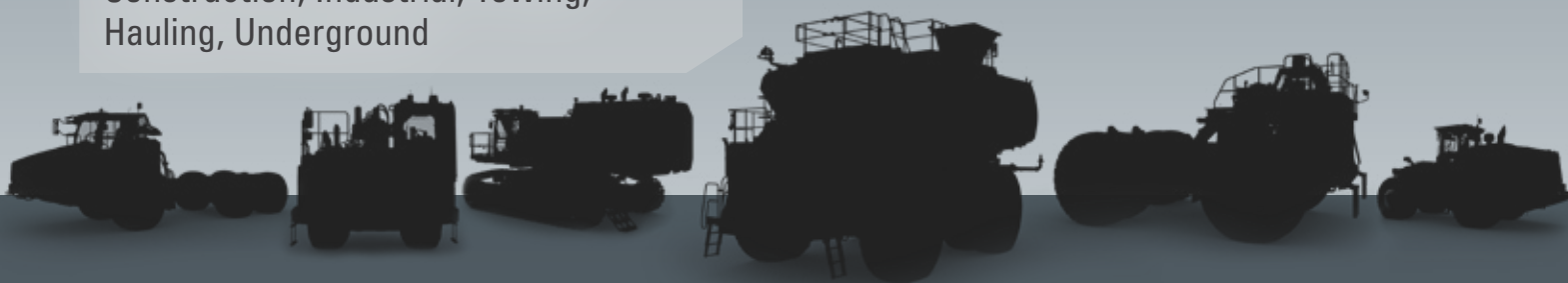
TR16, TR35, TR43, TH43, TA19, TA22, CX31

## **Integrated Systems:**

Partial System Kits

## **INDUSTRY / APPLICATION:**

Mining, Quarry, Underground, Industrial  
Agriculture, Locomotive



## WHAT WE DO

We provide integrated solutions for specialty applications, leveraging Cat components and machines to solve customer challenges.

## HOW WE DO IT

- + Developing new opportunities with customers and industries.
- + Leveraging existing capital, resources, and expertise.
- + Ensuring alignment with Caterpillar product and component groups.
- + Utilizing Cat dealer network and direct path to market for OEM customers.



# UNDERCARRIAGE

(Designed for 3rd Party OEMs)

**Complete lowers / side frames  
in a variety of track pitches (greased):**  
101.6 mm, 135 mm, 154 mm, 171.5 mm,  
190.5 mm, 203.2 mm, 215.9 mm, 260.4 mm

**Components / link assemblies  
in a variety of track pitches (oiled):**  
155.6 mm, 175.5 mm, 202.8 mm,  
215.9 mm, 240 mm, 260 mm, 318 mm

- + Rubber and steel track available
- + General Duty, Heavy Duty, HDXL options
- + Customizable paint colors

## INDUSTRY / APPLICATION:

Rotary Blast Hole Drills, Track Drills,  
Forestry, Stump Grinders, Woodchippers,  
Mobile Conveyors, Mobile Crushers

# COMPONENTS / AFTERMARKET

Technology Integration:  
**Cat Water Delivery System (WDS)**  
**Cat MineStar Edge for Water**  
(first fit / retrofit)

**Component Packages and Partial  
System Kits:** Drivetrain, Engines,  
Axles, Cabs, Electronics, Hydraulic  
Pumps / Motors

## INDUSTRY / APPLICATION:

Mining, Quarry, Dust Suppression,  
Mobile Crushers, Construction,  
Industrial, and more



## WHY OUR CUSTOMERS WANT TO WORK WITH US

Utilizing Cat OEM Solutions to enhance their products enables our customers to leverage existing designs, manage risk, and gain global support from the renowned Cat dealer network.

# CAT® ARTICULATED TRUCK BARE CHASSIS OPTIONS

FOR WATER TRUCKS, FUEL / LUBE TRUCKS, TOWED IMPLEMENT  
AND A VARIETY OF PURPOSE-BUILT SPECIALTY APPLICATIONS

	725	730	735	740*	745*
CAT ENGINE	C13	C13	C13	C15	C18
GROSS POWER SAE J1995	263 kW 352 hp	280 kW 375 hp	325 kW 436 hp	337 kW 452 hp	381 kW 511 hp
REGION	HRC	HRC / LRC	HRC / LRC	HRC / LRC	HRC / LRC
PAYLOAD	24 tonnes 26.5 tons	28 tonnes 31 tons	32 tonnes 35.3 tons	36.3 tonnes 40 tons	41 tonnes 45.2 tons
WHEEL BASE	Standard Wheel Base	Standard & Long Wheel Base	Standard & Long Wheel Base	Standard Wheel Base	Standard & Long Wheel Base
DIESEL FUEL / LUBE CAPACITY**	13 248 L / 3,500 gal Lube: 4542 L / 1,200 gal Grease: 340 kg / 750 lb	15 141 L / 4,000 gal Lube: 5678 L / 1,500 gal Grease: 498 kg / 1,100 lb	18 927 L / 5,000 gal Lube: 5678 L / 1,500 gal Grease: 498 kg / 1,100 lb	18 927 L / 5,000 gal Lube: 5678 L / 1,500 gal Grease: 498 kg / 1,100 lb	18 927 L / 5,000 gal Lube: 5678 L / 1,500 gal Grease: 498 kg / 1,100 lb
WATER TANK CAPACITY**	18 927 – 37 854 L 5,000 – 6,000 gal	26 497 L 7,000 gal	30 283 L 8,000 gal	34 068 – 35 961 L 9,000 – 9,500 gal	34 068 – 35 961 L 9,000 – 9,500 gal

LRC = Lesser Regulated Countries. HRC = Highly Regulated Countries.

\*Software enabled attachment available for tow applications. \*\*Varies by 3rd Party OEM attachment.



Cat® bare chassis articulated trucks provide a custom solution for specialized applications — including water trucks, high capacity waste haulers, and fuel / lube trucks — using proven machines and components with the support of Caterpillar and the Cat dealer network.

# TAILGATES

## FOR CAT ARTICULATED TRUCKS

Tailgates are available for all current models and specific articulated truck models already in the field. Non-current models includes the Cat 740 GC, 745, and 745C.



# CAT OFF-HIGHWAY TRUCK BARE CHASSIS OPTIONS

## FOR WATER TRUCKS, TOW / HAUL, AND FUEL / LUBE TRUCKS

	770*	772*	773*	775*	777 (07)*	777 (05)*
CAT ENGINE	C15	C18	C27	C27	C32B	C32B
GROSS POWER SAE J1995	384 kW 515 hp	451 kW 605 hp	567 kW 760 hp	615 kW 825 hp	765 kW 1,026 hp	765 kW 1,026 hp
REGION	HRC / LRC	HRC / LRC	LRC	HRC / LRC	HRC / LRC	LRC
GROSS VEHICLE WEIGHT**	71 tonnes 78.5 tons	82 tonnes 90.5 tons	100 tonnes 110 tons	112 tonnes 123 tons	165 tonnes 181.5 tons	163 tonnes 180 tons
DIESEL FUEL / LUBE CAPACITY**	15 141 L 4,000 gal Lube: 8517 L 2,250 gal	15 141 L 4,000 gal Lube: 8517 L 2,250 gal	23 469 L 6,200 gal Lube: 8517 L 2,250 gal	23 469 L 6,200 gal Lube: 8517 L 2,250 gal	37 854 L 10,000 gal Lube: 8517 L 2,250 gal	37 854 L 10,000 gal Lube: 8517 L 2,250 gal
WATER TANK CAPACITY**	34 000 L 9,000 gal	41 500 L 11,000 gal	49 210 L 13,000 gal	56 775 L 15,000 gal	75 700 L 20,000 gal	75 700 L 20,000 gal
CAT WATER DELIVERY SYSTEM	—	—	—	Estimated 2026	●	●

LRC = Lesser Regulated Countries. HRC = Highly Regulated Countries.

\*Available with and without hoist cylinders. \*\*Varies by 3rd Party OEM attachment and machine configuration.  
Towing capacity not to exceed front or rear axle operating weights and trailer manufacturer gross weight.



Cat off-highway truck bare chassis options provide custom solutions for specialty applications — including water trucks, fuel / lube, and towing applications — with support from Caterpillar and the Cat dealer network. We also offer Cat components for equipment hauling trailer arrangements and bottom dump trailers compatible with the following truck models: 775, 777, 785D.



	785 (08)*	785 (04)*	789 (04)	789 (04) AWT
CAT ENGINE	3512E	3512C HD	3516C HD	3516C HD
GROSS POWER SAE J1995	1193 kW 1,600 hp	1082 kW 1,450 hp	1566 kW 2,100 hp	1566 kW 2,100 hp
REGION	HRC / LRC	LRC	LRC	LRC
GROSS VEHICLE WEIGHT**	250 tonnes 275 tons	250 tonnes 275 tons	320 tonnes 353 tons	320 tonnes 353 tons
DIESEL FUEL / LUBE CAPACITY**	68 137 L / 18,000 gal Lube: 20 819 L / 5,500 gal	15 141 L / 4,000 gal Lube: 20 819 L / 5,500 gal	23 469 L / 6,200 gal Lube: 20 819 L / 5,500 gal	—
WATER TANK CAPACITY**	113 500 L 30,000 gal	113 500 L 30,000 gal	165 000 L 43,588 gal	165 000 L 43,588 gal
CAT WATER DELIVERY SYSTEM	Estimated 2026	●	●	●

LRC = Lesser Regulated Countries. HRC = Highly Regulated Countries.

AWT = Autonomous Water Truck. The Cat 789 (04) is available as a fully autonomous water truck equipped with Cat MineStar™ Command connected to the Cat Water Delivery System with validated 3rd party water tanks.

\*Available with and without hoist cylinders. \*\*Varies by 3rd Party OEM attachment and machine configuration.

Towing capacity not to exceed front or rear axle operating weights and trailer manufacturer gross weight.



## CAT WATER SOLUTIONS

### PRECISION WATERING THROUGH AUTOMATION AND DATA TRACKING

**Cat® Water Solutions is more than a water truck.** It's an integrated solution designed with an automated water delivery system, driven by a proven Cat truck platform, connected with advanced technology — providing a more efficient way to manage haul road dust.

**The Cat Water Delivery System (WDS) connects with Cat MineStar™** providing data-driven insights to make informed decisions. Cat WDS automates water output and spray patterns to help reduce overwatering. Auto Mode, an exclusive WDS feature, is designed to deliver a more efficient watering technique with better precision and control compared to traditional watering methods.

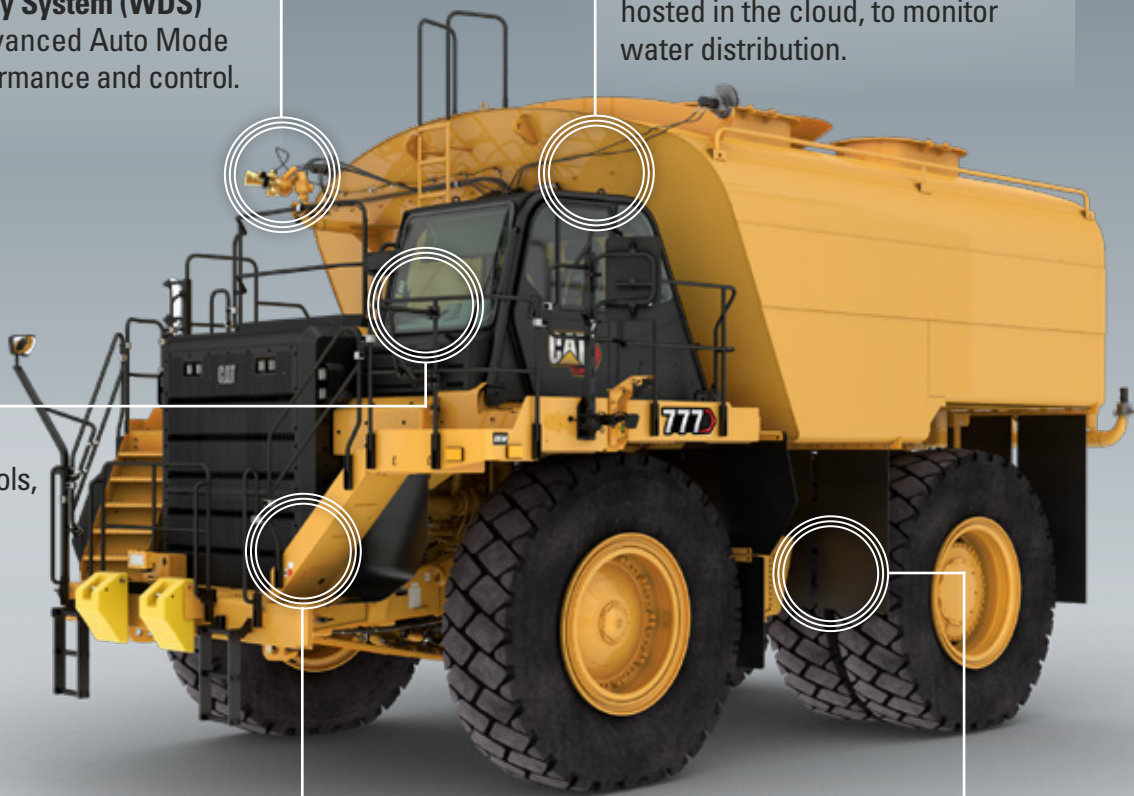
**Cat Water Delivery System (WDS)**  
equipped with advanced Auto Mode  
for improved performance and control.

**Cat MineStar™ connectivity**  
provides near-real-time information,  
hosted in the cloud, to monitor  
water distribution.

**Application-specific cab**  
with integrated water controls,  
equipped with higher ROPS  
rating for operator safety.

Built on proven **Cat truck platforms**  
for durability, reliability, and efficiency.

**Supported by the global Cat® dealer network**  
and eligible for protection plans / CVAs.





Options range from a fully integrated solution — Cat truck chassis, water tank, Cat Water Delivery System, and Cat MineStar telematics — to water truck conversions, upgrades, and retrofit options.



	WDS 1.0	WDS 2.0	WDS CAMERAS	CANNON NOZZLES	CONNECTIVITY HARDWARE
<b>CAT 777 (05)</b>	+ Factory Installed	—	IP Cameras: Factory Installed	<b>Options Include:</b> 1. Non-adjustable 2. Manual 3. Electrically adjusted 4. Electrically adjusted with soap/ foam	+ Factory Installed + Aftermarket Kit
<b>CAT 777 (07)</b>	+ Factory Installed + Aftermarket Kit	+ Aftermarket Kit	WAVS Cameras: Factory or Aftermarket Kit		+ Factory Installed + Aftermarket Kit
<b>CAT 785 (04)</b>	+ Factory Installed + Aftermarket Kit	—	—		+ Factory Installed + Aftermarket Kit
<b>CAT 789 (04)*</b>	+ Factory Installed + Aftermarket Kit	—	—		+ Factory Installed + Aftermarket Kit
<b>CAT 785D</b>	+ Aftermarket Kit	—	—		+ Aftermarket Kit
<b>CAT 789D</b>	+ Aftermarket Kit	—	—		+ Aftermarket Kit
<b>CAT 777F</b>	+ Aftermarket Kit	—	WAVS Cameras: Aftermarket Kit		+ Aftermarket Kit
<b>CAT 777G</b>	+ Aftermarket Kit	+ Aftermarket Kit	WAVS Cameras: Aftermarket Kit		+ Aftermarket Kit
*Autonomous watering operation is available with Cat® MineStar™ Command.  Requires validated OEM water tank.	Includes cab components: joystick, keypad, touchscreen.  Mounting hardware, hoses, and brackets available for specific OEM tank manufacturers.  Option to select 3–5 spray heads.	Includes cab components: joystick, keypad, touchscreen.  Mounting hardware, hoses, and brackets will vary depending on OEM water tank configuration.  5 spray heads standard.  Additional spray heads available upon request.	2 cameras on top of water tank fill chute and 1 camera to view spray bar on water tank.  WAVS Cameras come with additional in-cab monitor.  IP Cameras integrate with the existing WDS in-cab display.	Nozzle selection will affect cannon performance. We recommend both electrically adjusted options for better performance.  *Cannon control is not available for autonomous operation.	Telematics hardware: Cat MineStar with Product Link Elite.  Connects with MineStar for Water cloud-based service offering.

# CAT PARTIAL WHEEL TRACTOR SCRAPER OPTIONS

## FOR WATER, ELEVATING SCRAPERS, AND INDUSTRIAL APPLICATIONS

	621	631	651
CAT ENGINE	C13	C18	C18
FLYWHEEL POWER TRACTOR	304 kW 407 hp	425 kW 570 hp	469 kW 629 hp
REGION	HRC / LRC	HRC / LRC	HRC / LRC
RATED LOADED	26 127 kg / 26.19 tonnes 57,610 lb / 28.81 tons	37 200 kg / 37.2 tonnes 82,200 lb / 41.1 tons	47 174 kg / 46.4 tonnes 104,000 lb / 52 tons
WATER TANK CAPACITY*	30 283 L 8,000 gal	37 854 L 10,000 gal	45 424 L 12,000 gal

LRC = Lesser Regulated Countries. HRC = Highly Regulated Countries.

\*Varies by 3rd Party OEM attachment. Towing capacity not to exceed operating weights and trailer manufacturer gross weight.



The partial wheel tractor scraper power units can be leveraged for a variety of final machines, including water pulls, 34-yard elevating scrapers, lowboy trailer power units, and more.



# CAT FRONTLESS MINING SHOVELS

## FOR INDUSTRIAL APPLICATIONS

	6015	6020
CAT ENGINE	C27	C32
ENGINE OUTPUT SAE J1995	615 kW 824 hp	776 kW 1,040 hp
REGION	HRC / LRC	HRC / LRC
OPERATING WEIGHT	140 tonnes 154.3 tons	230.2 tonnes 253.8 tons

LRC = Lesser Regulated Countries. HRC = Highly Regulated Countries.



**We offer frontless mining shovels to pair with 3rd party custom attachments.** Partial mining shovels can be used for scrap, refuse, bulk material handling, dredging, demolition, specialty excavation, and forestry.

# CAT FRONTLESS WHEEL LOADER OPTIONS

FOR TIRE HANDLERS, CABLE REEL HANDLERS, AND INDUSTRIAL APPLICATIONS

	950	962	966	972	980	982	988
CAT ENGINE	C7.1	C7.1	C9.3B	C9.3B	C13	C13	C18
ENGINE POWER ISO 14396:2002	186 kW 249 hp	201 kW 269 hp	239 kW 321 hp	253 kW 339 hp	313 kW 420 hp	322 kW 432 hp	432 kW 580 hp
REGION	HRC / LRC	HRC / LRC	HRC / LRC	HRC / LRC	HRC / LRC	HRC / LRC	HRC / LRC
OPERATING WEIGHT	19 260 kg 42,461 lb	20 171 kg 44,469 lb	23 196 kg 51,124 lb	24 890 kg 54,858 lb	30 344 kg 66,877 lb	35 510 kg 78,264 lb	51 062 kg 112,574 lb
STATIC TIPPING LOAD	up to 11 961 kg 26,369 lb	up to 12 487 kg 27,529 lb	up to 15 981 kg 35,224 lb	up to 17 505 kg 38,582 lb	up to 20 965 kg 46,208 lb	up to 22 418 kg 49,410 lb	up to 52 887 kg 116,597 lb

LRC = Lesser Regulated Countries. HRC = Highly Regulated Countries. GC options available on certain models.



**We offer frontless wheel loaders for tire handler attachments, cable reel handlers, and other industrial applications.** Cat wheel loaders are versatile and can be easily customized to work with various 3rd party OEM attachments for speciality applications.



# CAT MOTOR GRADER

## FOR SPECIALTY APPLICATIONS

	120
CAT ENGINE	C7.1
NET POWER ISO 9249/SAE J1349	97 kW 130 hp
REGION	HRC / LRC
MACHINE WEIGHT	15 906 – 16 499 kg 34,610 – 35,067 lb
BLADE WIDTH	3.7 m / 12 ft
MACHINE SPEED	4.1 km/h – 48.3 km/h 2.6 mph – 30.1 mph

LRC = Lesser Regulated Countries. HRC = Highly Regulated Countries.



**The Next Generation Cat 120 motor grader offers the options of joystick or steering wheel and lever controls.** This motor grader can also be modified to work in an underground mining application.



**Robust design, durable, high-end materials, and precision tolerances make Cat components the obvious choice to complement your machines.** Our team of engineers can help design a customized solution for your specialty machine application.

### CAT HYDRAULICS

Hydraulics make the connection between machine power and job productivity. The Cat hydraulics advantage starts with quality components that deliver high pressure thresholds. They're built to meet the exacting specs of Cat equipment — from power and responsiveness to breakout force and speed, and are easily adapted to work on other equipment.



### CAT DRIVETRAINS

Final drive and transmission parts work together to transmit power to the ground and propel earthmoving equipment through a variety of applications all over the world. Genuine Cat drivetrain parts, along with excellent maintenance and repair options, helps to maximize productivity and lower owning and operating costs.

### CAT AXLES

Cat axles provide high durability, low sound levels, and traction control on uneven or poor terrain. Caterpillar offers a wide variety of models and load capacities. Caterpillar's heavy-duty design withstands the type of shock loading that occurs during all-terrain operation. Oil-disc brakes are adjustment free and fully enclosed.





## CAT TRANSMISSIONS

We develop each transmission to integrate with other powertrain systems and components — including the engine, axle, electronics, hydraulics, and operator interface — to help maximize power and optimize the performance of the complete powertrain system.



## CAT HYDRAULIC PUMPS & MOTORS

Cat hydraulic pumps and motors are precisely designed and manufactured to meet the demanding requirements of Cat equipment, offering the highest standard of quality and reliability in the industry. Ready to power your equipment, these components help to maximize performance and durability for optimal hydraulics system operation.

## CAT TORQUE CONVERTERS

Torque Converters matched to engine speed and horsepower can have a significant positive impact on vehicle performance. Caterpillar OEM Solutions can offer OEMs a world-class selection of convertor types and sizes. We offer a wide variety of configurations available to match specific applications.



## CAT UNDERCARRIAGE

From a full arrangement to individual components, we offer Cat undercarriage integration with 3rd party OEM products. With a collaborative approach, our engineering team will design a solution that compliments specific applications with full support from the global Cat dealer network.

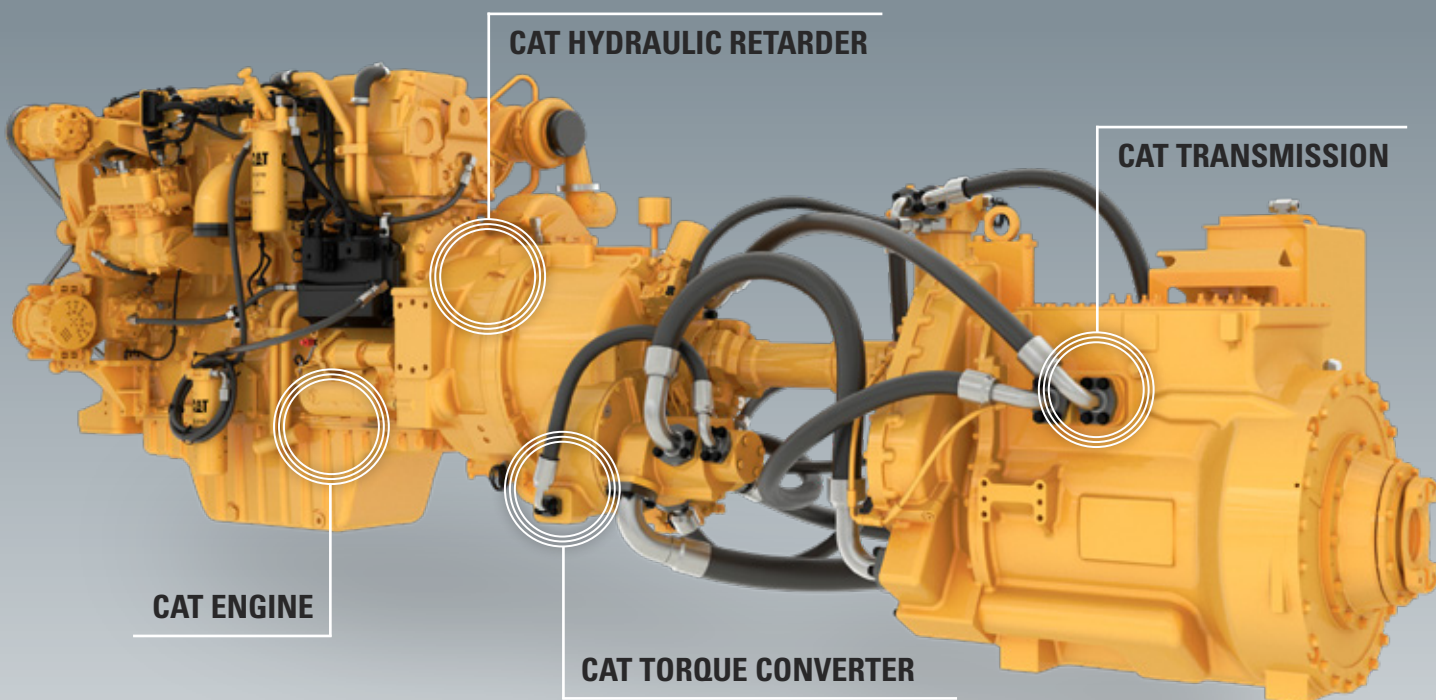
## CAT POWER MODULES

### FOR RAIL / LOCOMOTIVE, AGRICULTURE, AND HAULING

Cat power modules offer an integrated package made of rugged and durable components designed to provide reliable power in various applications. We take a collaborative approach, working with 3rd party OEMs, to ensure the power we provide is the best match for their solutions.

#### CAT POWER MODULES FOR RAIL AND LOCOMOTIVE

MODEL	C9.3B / TR35-E44	C9.3B / TR43-E44	C13B / TR43-E44	C13B / TR43-M44	C18 / TR43-M44
GROSS POWER	280 kW / 375 hp	340 kW / 456 hp	370 kW / 496 hp	430 kW / 577 hp	470 kW / 630 hp



#### CAT POWER MODULES FOR HAULING AND INDUSTRIAL

MODEL	C7.1 / TR16	C11 / CX31	C18 / TA22	C18 / TH43	C27 / TH43
GROSS POWER	168 kW / 225 hp	242 kW / 325 hp	470 kW / 630 hp	570 kW / 765 hp	587 kW / 787 hp
APPLICATION	Hauling: Quarry / Mining	Hauling: Quarry / Mining	Industrial: Agriculture / Construction	Hauling: Quarry / Mining	Hauling: Quarry / Mining

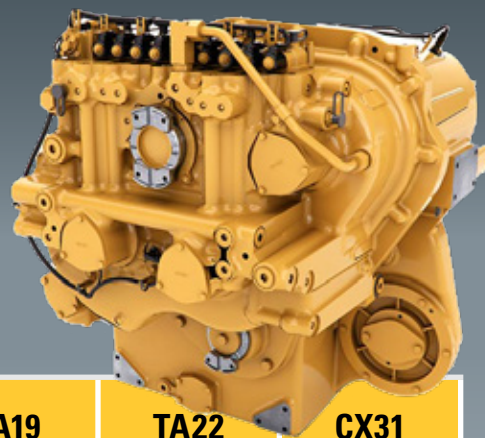
Rail and Hauling Power Modules are only available for lesser regulated countries.

Optional cooling packages are also available.

## CAT TRANSMISSIONS

### FOR CUSTOM SOLUTIONS

We develop each transmission to integrate with powertrain systems and components – including the engine, axle, electronics, hydraulics, and operator interface – to help maximize power and performance of the complete system.



	TR16	TR35	TR43	TH43	TA19	TA22	CX31
GROSS POWER	155 kW 208 hp	193 - 209 kW 259 - 280 hp	370 - 470 kW 496 - 630 hp	544 kW 729 hp	336 kW 450 hp	440 kW 590 hp	410 kW 550 hp
ENGINE PAIRING	C7.1	C9.3B	C13B, C15, C18	C18, C27	C9.3B, C13, C15	C15, C18	C9, C11, C13, C15, C18
PURPOSE	Off-highway	Rail, Off-highway	Rail, Off-highway	Off-highway	Agriculture	Agriculture	Off-highway, On-highway

**We recommend pairing a Cat transmission with a Cat engine for optimal performance.**

Our engineering team can recommend a transmission that will work best for your purpose-built machine application.



# CAT CABS

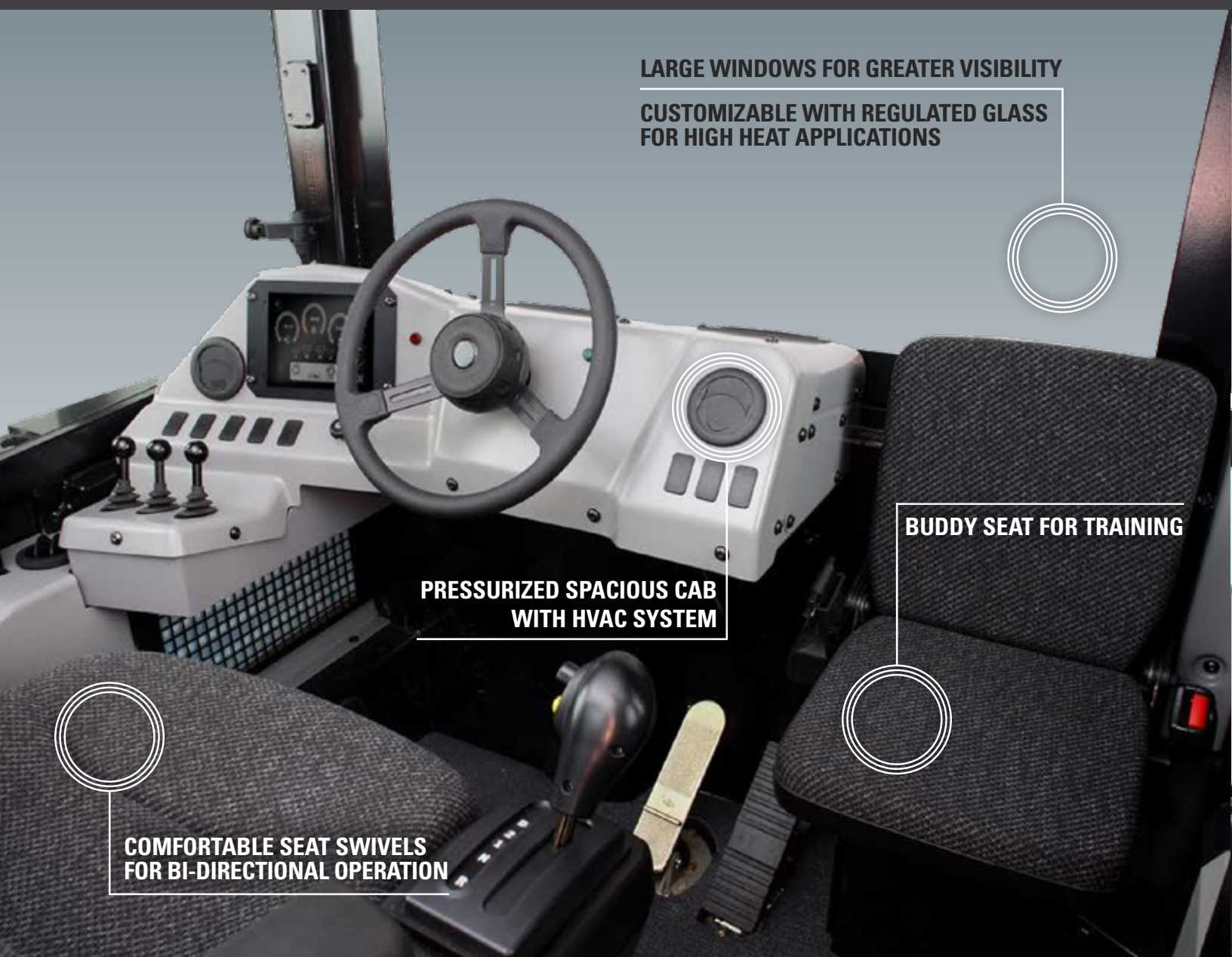
## FOR INDUSTRIAL APPLICATIONS

Save time and money using pre-built cabs, ready to integrate with existing OEM designs.

We offer both off-highway truck and excavator style cabs. From a collaborative designed solution to a modular cab for custom modifications – we have flexible options to fit a variety of machine configurations.

### CAB STYLE: OFF-HIGHWAY TRUCK

DESIGNED FOR HEAVY-DUTY APPLICATIONS  
WITH DUAL OPERATOR STATIONS



LARGE WINDOWS FOR GREATER VISIBILITY

CUSTOMIZABLE WITH REGULATED GLASS  
FOR HIGH HEAT APPLICATIONS

PRESSURIZED SPACIOUS CAB  
WITH HVAC SYSTEM

BUDDY SEAT FOR TRAINING

COMFORTABLE SEAT SWIVELS  
FOR BI-DIRECTIONAL OPERATION

# CUSTOM CAB CONFIGURATIONS

If you're looking for a basic cab to fit onto your machine, we can offer that as well. We can work with you to remove anything you may not need, including the seat.

## CAB STYLE: EXCAVATOR

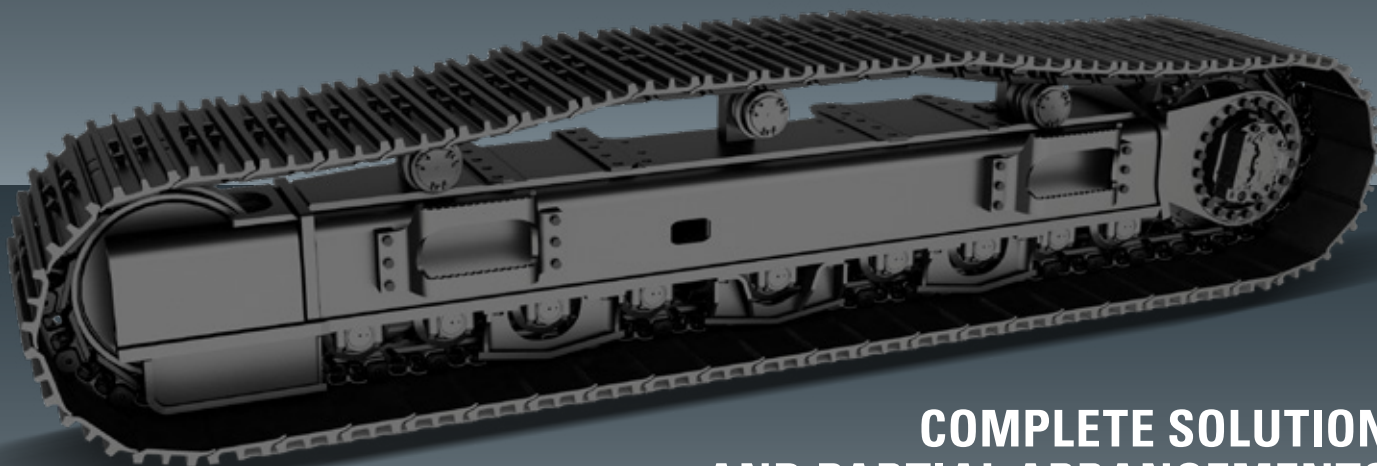
DESIGNED FOR LIGHT-DUTY APPLICATIONS  
WITH FLEXIBILITY FOR CUSTOM MODIFICATIONS



## CAT UNDERCARRIAGE

FOR DRILLS, CRUSHERS, CONVEYERS, APRON FEEDERS, AND MORE.

Cat undercarriage systems provide efficient hydraulic power and enhanced track motion control. Our undercarriages serve the construction, material handling, quarry, mining, and forestry industries in a wide variety of ways, delivering lower operating and maintenance costs.



### COMPLETE SOLUTION AND PARTIAL ARRANGEMENTS

DESIGNED FOR 3RD PARTY OEM PRODUCTS

We offer complete undercarriage systems, partial arrangements, and individual components.

Carrier rollers, track rollers, track links, and track shoes are also available.

Customizable paint colors are available upon request.

### DELIVERING PROVEN PERFORMANCE

- » Cat undercarriage is factory and field tested.
- » With long wear life and low operating costs, Cat undercarriage delivers a high return on investment.

### DESIGNED FOR SPECIFIC APPLICATIONS

- » Caterpillar engineers understand how demanding applications can wear undercarriage components – so they design them as a system.
- » Each undercarriage is built to take on specific conditions such as sand, gravel, mud, and clay.

### QUALITY BUILT IN

- » Because Caterpillar manufactures its own undercarriage, every component meets strict specifications and quality standards.
- » Durable, reliable components result in lower operating costs.



These undercarriage options are designed to integrate into 3rd party OEM machines.

Our team of engineers can help you determine the best option for your application.

## GREASED 101.6 MM – 260.4 MM

TRACK PITCH	GENERAL DUTY	HEAVY DUTY	HEAVY DUTY XL
101.6 mm	•	•	
135 mm	•	•	
135 mm	•	•	
154 mm	•	•	
171.5 mm	•		
190.5 mm	•	•	•
203.2 mm	•	•	•
215.9 mm	•	•	
215.9 mm	•	•	•
260.4 mm	•	•	

## OILED 155.6 MM – 318 MM

TRACK PITCH	GENERAL DUTY	HEAVY DUTY	HEAVY DUTY XL
155.6 mm	•		
175.5 mm	•		
202.8 mm	•		
215.9 mm	•		•
240 mm	•	•	•
260 mm	•	•	•
318 mm	•	•	•

low-to-moderate impact  
applications

medium impact and medium  
travel in tough underfoot  
conditions

high-impact and high-travel  
applications

# WARRANTY POLICIES

## FOR MACHINES AND COMPONENTS\*

The specific warranty policy is described in our standard terms and conditions and referenced by the SELF numbers shown below.

### OEM PARTS | SELF 5589:

1 year / unlimited – no labor

### OEM MACHINES & SERIALIZED COMPONENTS | SELF 5702:

1 year / unlimited – reasonable labor

### OEM LOCOMOTIVE | SELF 5551:

2 year / 3,000 hour – reasonable labor

\*Global OEM Solutions warranty is valid in any Cat dealer region and is non-transferrable.

For more information on warranty registration, visit:

[https://www.cat.com/en\\_US/by-industry/oem-solutions/warranty.html](https://www.cat.com/en_US/by-industry/oem-solutions/warranty.html)

## OEM SOLUTIONS

Our goal is to maximize Caterpillar content on your OEM products, providing the benefit of Caterpillar quality, reliability, serviceability, and availability. And when you use Cat content in your machine, you gain access to the Cat dealer network. When customers buy our products, they know they will be supported by the most capable and reliable global service network in the world.

For more information, contact OEM Solutions:

[oem\\_solutions@cat.com](mailto:oem_solutions@cat.com) | [www.cat.com/oemsolutions](http://www.cat.com/oemsolutions)

PEDJ1578-01 (01-2026)  
Global

© 2026 Caterpillar  
All rights reserved

Materials and specifications are subject to change without notice.

CAT, CATERPILLAR, LET'S DO THE WORK, their respective logos, "Caterpillar Corporate Yellow," the "Power Edge" and Cat "Modern Hex" trade dress as well as corporate and product identity used herein, are trademarks of Caterpillar and may not be used without permission.

