

MH3026

WHEEL MATERIAL HANDLER



Engine Model
Maximum Operating Weight
Maximum Reach

Cat® C7.1
29 200 kg (64,370 lb)
13 000 mm (42.7 ft)



MH3026

WHEEL MATERIAL HANDLER

We know when it comes to material handling equipment, your success depends on productivity and low operating costs. The Cat® MH3026 has simple-to-use technologies, a comfortable cab, and multiple machine options to match your work. These features help create a safe, reliable product to take on the wide variety of challenges you face each day in the toughest material handling applications.



HIGH PERFORMANCE

Work fast with high swing torque. A long reach offering helps you move more material without repositioning the machine.

LOW MAINTENANCE COSTS

Long life filters for fuel, hydraulic oil, and air help lower your overall costs.

OPERATOR EFFICIENCY

Standard factory-equipped technology, including 2D E-fence and Cat Payload, and an ergonomic cab design with joystick steering help improve operator comfort and efficiency.



Machine Setup Simplification

- At the touch of fingertips and navigating user-friendly icons, the latest operator oriented User Interface (UI) maximizes uptime and gets crews to work without delay. From re-ordering work tool lists to creating new work tool combinations as needed, operators can quickly set up machines and easily access information.
- The interface allows operators to maintain accuracy and makes the most of every second of their shift. Adding the ability to input couplers and attachments into the system makes setting up work tool combinations highly efficient by significantly reducing calibration time. It also eliminates the need to measure up again when changing Cat® work tool attachments and makes it manageable for a single person to check and adjust for bucket wear.

Cat Payload*

- Cat Payload provides operators with on-the-go weighing to help them hit load targets and avoid overloading, underloading, or misloading materials.

Swing Assist

- Swing Assist automatically stops machine swing at operator-defined preset points. Simply swing to the desired stopping point and activate using the machine monitor or a preset joystick button. As you get closer, the machine will automatically decelerate and not allow swing past the set point. Swing Assist helps you hit more repetitive swing targets to help reduce fuel use and improve cycle times.

**Payload technologies are not legal for trade.*

*Not all features are available in all regions. Please check with your Cat dealer for specific offering availability in your area.
Build Number: 07E*

HIGH PERFORMANCE

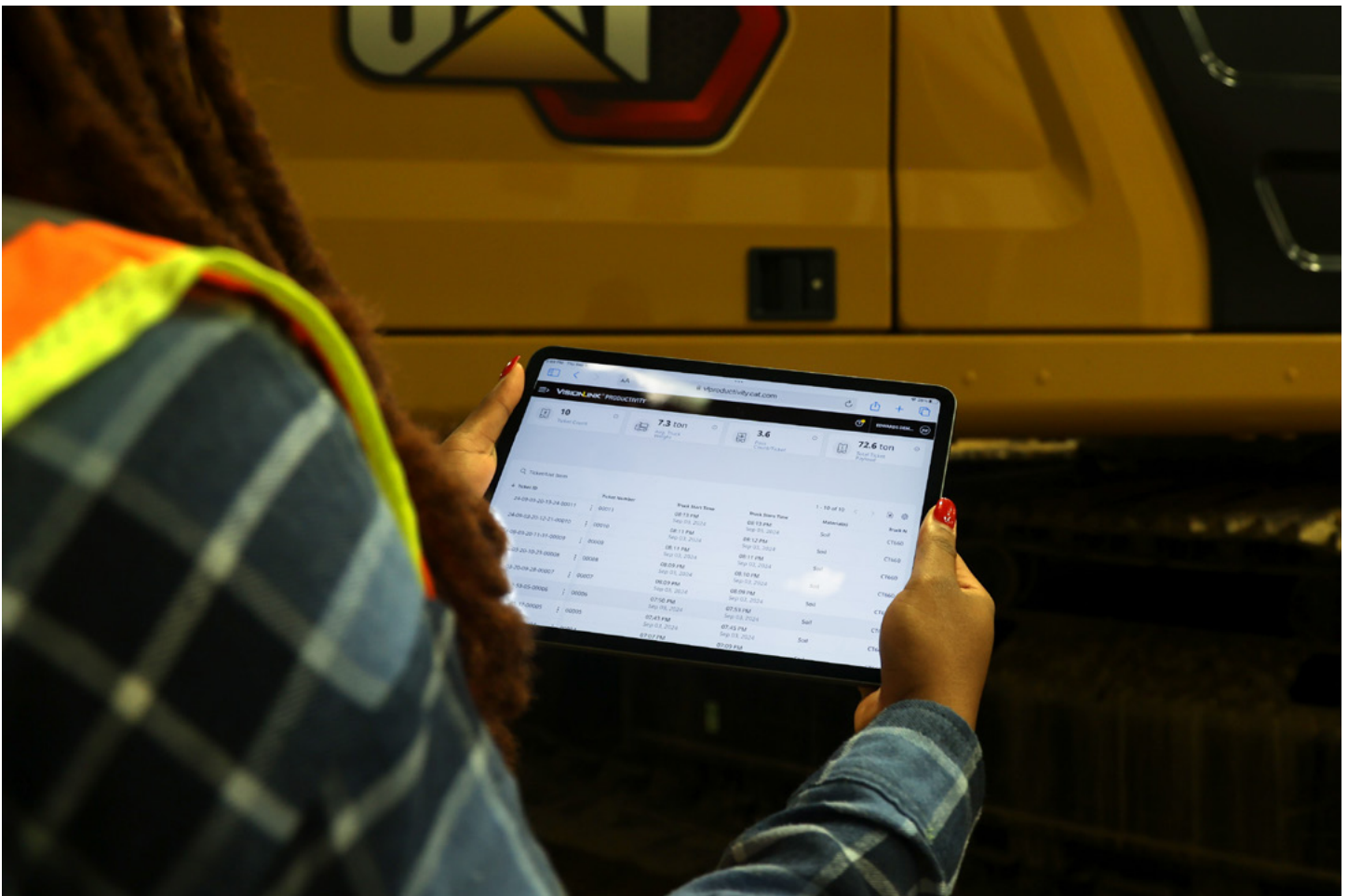


- The C7.1 engine can run on biodiesel up to B20 and meets U.S. EPA Tier 4 Final, EU Stage V and Japan 2014 emission standards with an aftertreatment system that requires no scheduled maintenance or downtime.
- Match the machine to the job with three power modes – Power, Smart, and Eco. Smart mode automatically matches engine and hydraulic power to working conditions, helping provide maximum power when needed and reducing power when it isn't to save fuel.
- The advanced electro-hydraulic system helps provide the optimum balance of power and efficiency while giving you the control you need.
- Available SmartBoom™ lets the boom freely travel up and down without using any pump flow so operators can focus on stick and bucket work.
- Valve priority helps put hydraulic pressure and flow where you need it.
- Program and store your preferred power mode and joystick settings using your Operator ID. The machine will automatically remember your selections.

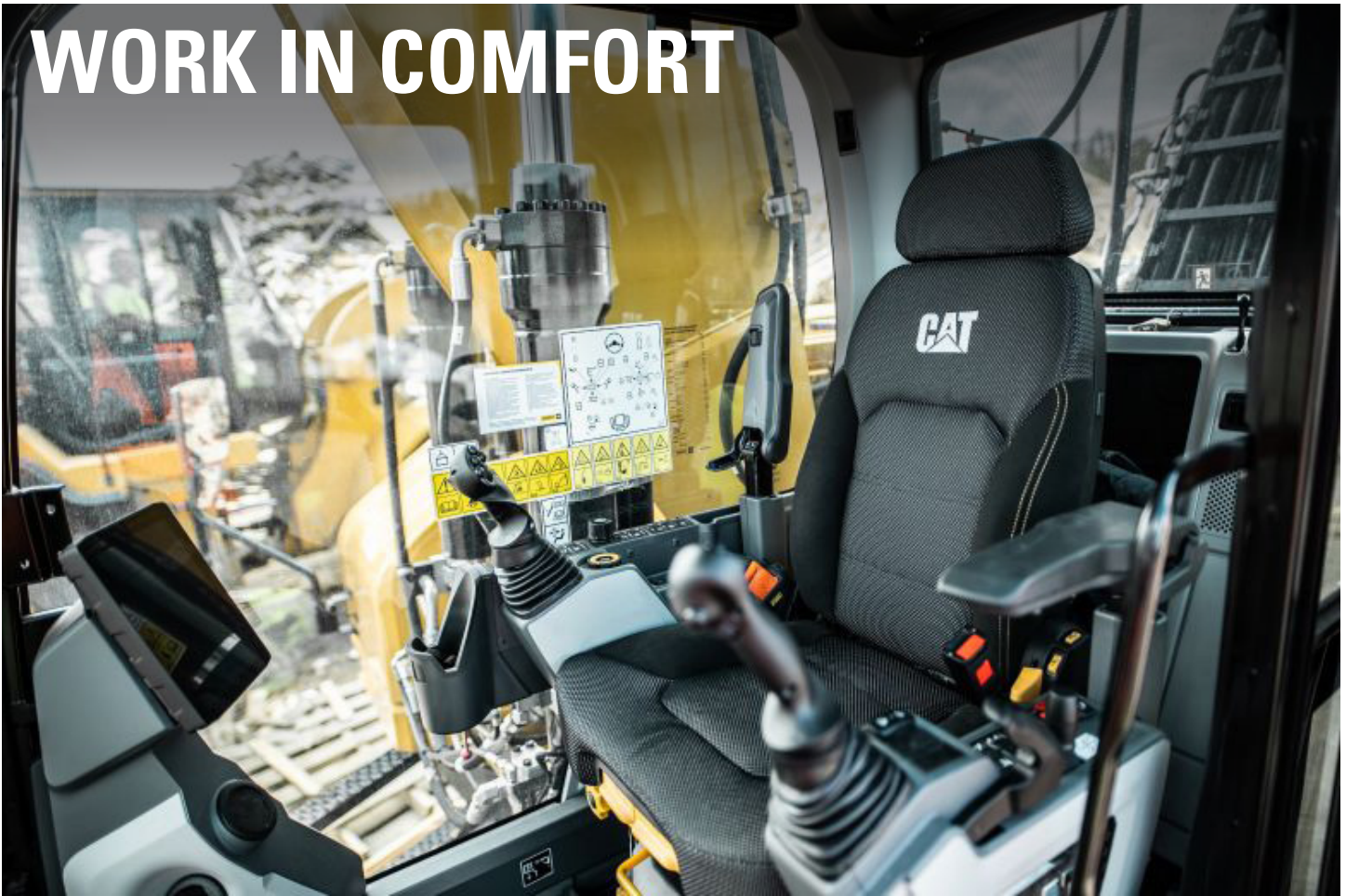
INTEGRATED CAT® TECHNOLOGIES

- Cat Payload helps you achieve precise load targets to improve your operating efficiency. Pick up a load of material – with grapple or clamshell attachments – and get a real-time weight estimate without swinging.
- VisionLink provides actionable data insights for all assets – regardless of fleet size or equipment manufacturer.* Review equipment data from your desktop or mobile device to maximize uptime and optimize assets. Dashboards provide information such as hours, miles, location, idle time, and fuel utilization. Make informed decisions that lower costs, simplify maintenance, and improve safety and security on your jobsite.
- Swing Assist automatically stops machine swing at operator-defined preset points. Simply swing to the desired stopping point and activate using the machine monitor or a preset joystick button. As you get closer, the machine will automatically decelerate and not allow swing past the set point. Swing Assist helps you hit more repetitive swing targets to help reduce fuel use and improve cycle times.
- Remote Troubleshoot is a mobile application that allows your Cat dealer to perform diagnostic testing on your connected machine remotely to help ensure that issues are resolved quickly and with less downtime.
- Remote Flash is a mobile application that allows you to update onboard software without a technician being present, allowing you to initiate software updates when convenient, increasing your overall operating efficiency.

** Data field availability can vary by equipment manufacturer.*



WORK IN COMFORT



- Choose between a deluxe and premium cab. Both provide a comfortable, ergonomic work environment.
- The cab has a wide seat that adjusts for operators of all sizes.
- Control the machine comfortably with easy-to-reach controls all located in front of you.
- Standard automatic climate control keeps you at the right temperature all shift long.
- The optional advanced air filtration system with integrated pre-cleaner helps prevent harmful airborne substances from entering via the air conditioning (A/C) system.
- Stow your gear with plenty of in-cab storage beneath and behind the seat, overhead, and in the consoles. A cup holder, document holder, bottle holder, and coat hook are also provided.
- Connect to personal devices via the standard radio's USB ports and Bluetooth® technology.
- Optional auxiliary relay powers on and turns off CB radios, beacon lights, and other attachments without taking your hands off the joysticks.
- Cat continues to improve user interface functionality for operators of all skill levels. The touchscreen monitor is an easy-to-use operating tool that presents the jobsite dashboard with an intuitive format.
- Productivity applications are displayed in grid view to read on the go, and touchscreen navigation is programmed to ensure job performance continues without any hold-ups.

RELIABLE, DURABLE, AND VERSATILE

- Count on your machine to withstand wear throughout the years. Boom, sticks, and other high-stress areas are reinforced with thick multi-plate fabrications, castings, and forgings to help ensure quality and reliability.
- Work up to 3000 m (9,840 ft) above sea level without derating.
- Don't let the temperature stop you from working. The machine has a standard high-ambient temperature capability of 52°C (125°F) and cold start capability of -18°C (0°F).
- Auto warm-up speeds up hydraulic oil warming in cold temperatures and helps prolong the life of components.
- Standard autolube simplifies maintenance by automatically keeping the machine greased from the swing bearing and cab riser to the stick end.
- Match your machine to your application. Multiple configurations allow you to customize your machine to your needs.
- An optional 15 kW (20 hp) generator allows for magnet operation. Generator controls are fully integrated into the cab monitor.
- Expand your work capabilities with attachments for a variety of applications.



MAINTENANCE

- Track your machine's filter life and maintenance intervals via the in-cab monitor.
- Scheduled Oil Sampling (S-O-SSM) ports are located at ground level, helping simplify maintenance and allowing for quick, easy extraction of fluid samples for analysis.
- The long life of the air intake filter with pre-cleaner helps save on maintenance costs.
- The hydraulic oil filter helps provide high filtration performance, anti-drain valves to help keep oil clean when the filter is replaced, and long life with a 3,000-hour replacement interval.
- High-efficiency cooling fans run only when needed; you can program intervals so they automatically reverse to keep cores clean without interrupting your work.
- The optional waste package includes a wide-fin-spacing radiator and air inlet screen with an integrated vibration device designed to help improve the performance of the reversible fan to help enhance cleaning results.
- Boost productivity with proactive service reminders. The integrated vehicle health management system alerts the operator with step-by-step service guidance and the parts needed to help reduce unnecessary downtime.



SAFETY FEATURES



- Cab Avoidance helps you avoid contact between your worktool attachment and the cab.
- Standard 2D E-fence prevents your machine from moving outside operator-defined parameters.
- Ground-level shutoff switch stops all fuel to the engine when activated and shuts down the machine.
- Keep your machine secure with Operator ID. Use your PIN code on the monitor to enable the push-button starting feature.
- Enjoy great all-around visibility with the help of small cab pillars, large windows, and a flat engine hood design. Rearview and side-view cameras are standard.
- Standard 1800-lumen LED exterior lights illuminate your surroundings for a safer work environment.
- Thick impact-resistant windshields fulfill P5A standards.
- Service platform design provides easy, safe, and quick access to the upper service platform. The service platform steps use an anti-skid punch plate to help prevent slipping.
- The standard hydraulic lockout lever isolates all hydraulic and travel functions in the lowered position.
- Optional Operator Protective Guards (OPG) protect from falling and flying debris.
- In an emergency, lower the cab safely with the emergency cab lowering valve behind the cab riser or to the right of the seat. The valve located behind the cab riser is easily accessible.
- Boom and stick lowering check valves prevent reverse flow, keeping your front linkage securely in place should the hydraulic system unexpectedly lose pressure.
- Make service work more accessible and safer with optional inspection lighting. With the flip of a switch, lights will illuminate the engine pump, battery, and radiator compartments to enhance visibility.

SUSTAINABILITY

- The Cat C7.1 diesel engine meets U.S. EPA Tier 4 Final, EU Stage V and Japan 2014 emission standards.
- Cat diesel engines are required to use ULSD (ultra-low sulfur diesel fuel with 15 ppm of sulfur or less) or ULSD blended with the following lower-carbon intensity fuels** up to: 20% biodiesel FAME (fatty acid methyl ester)* or 100% renewable diesel, HVO (hydrogenated vegetable oil) and GTL (gas-to-liquid) fuels. Refer to guidelines for successful application. Please consult your Cat dealer or “Caterpillar Machine Fluids Recommendations” (SEBU6250) for details.
- Auto Engine Speed Control helps reduce unnecessary fuel burn and greenhouse gas emissions by allowing the engine to automatically go into idle mode when the machine is not working.
- Cat® 2D E-fence keeps the front linkage within a predefined work area to avoid hazards such as traffic – not only helping keep personnel safe but also helps avoid repairs, downtime, and costly jobsite fines.
- Extended maintenance intervals help reduce downtime and decrease the amount of fluid and filters that are replaced over the machine’s life.
- VisionLink displays the CO₂ emissions for monitored assets, calculated by fuel type for the Runtime Fuel Burned each day in a selected date range.
- Remote Flash helps minimize downtime and maintenance time while keeping your asset running with maximum efficiency. Alerts for machine updates are sent virtually from your Cat dealer and updates can be deployed without a dealer technician needing to be onsite.
- Remote Troubleshoot helps decrease maintenance time and keeps your machine running with maximum efficiency by allowing your Cat dealer to virtually test the machine while working. Once a problem is identified, a technician can fix it the first time, saving time and money.

**Engines with no aftertreatment devices can use higher blends, up to 100% biodiesel (for use of blends higher than 20% biodiesel, consult your Cat dealer).*

***Tailpipe greenhouse gas emissions from lower-carbon intensity fuels are essentially the same as traditional fuels.*



MORE THAN MACHINES

BUILT AROUND YOUR SUCCESS

When you buy Cat equipment, you get so much more than the machine. You also get the support of a world-class dealer network, backed by a range of flexible solutions, technology, tools, and more.



CUSTOMER VALUE AGREEMENTS

A Customer Value Agreement (CVA) from your Cat dealer helps you do more and worry less. A CVA simplifies machine ownership and maintenance, adds the security of expert dealer support, and gives you the peace of mind from effective equipment health management.

GENUINE CAT® PARTS

Genuine Cat parts deliver the highest level of reliability and productivity. Order direct from your Cat dealer or shop online at parts.cat.com.

REPAIR OPTIONS

A broad range of repair options gives you choices that work with your needs, budget, and timeline. Every repair is performed by expert Cat technicians. You'll receive smart repair advice, a timely, accurate quote, and service that gets your machine back into action quickly.

FINANCIAL SERVICES

Count on Cat Financial to provide the best finance and extended protection solutions for your business. For more than 30 years, we have helped our customers succeed through financial service excellence.



DOZERS



SKID STEERS



MATERIAL HANDLERS



EXCAVATORS



WHEEL LOADERS



TRACK LOADERS

INCREASE YOUR PRODUCTIVITY AND PROFIT WITH CAT ATTACHMENTS

Easily expand the performance of your machine by using Cat attachments. Each Cat attachment is designed to fit the weight and horsepower of Cat material handlers for improved performance, safety, and stability.

**GSH – ORANGE PEEL
GRAPPLES**



**GSV – ORANGE PEEL
GRAPPLES**



**DEMO AND SORTING
GRAPPLES**



CLAMSHELL GRAPPLES



MULTI-PROCESSORS



TECHNICAL SPECIFICATIONS

Engine

Engine Model	Cat C7.1	
Net Power – ISO 9249	128 kW	171 hp
Net Power – ISO 9249 (DIN)	174 hp (metric)	
Engine Power – Maximum – ISO 14396	129 kW	174 hp
Engine Power – ISO 14396 (DIN)	176 hp (metric)	
Bore	105 mm	4.1 in
Stroke	135 mm	5.3 in
Displacement	7 l	427.8 in ³
Biodiesel Capability	Up to B20 ¹	
Emissions	Meets U.S. EPA Tier 4 Final and EU Stage V emission standards.	

Net power advertised is the power available at the flywheel when the engine is equipped with fan, air cleaner, Clean Emission Module (CEM) exhaust gas aftertreatment, alternator, and cooling fan running at intermediate speed. Rated speed 2,200 rpm. Advertised power is tested per the specified standard in effect at the time of manufacture.

¹Cat diesel engines are required to use ULSD (ultra-low sulfur diesel fuel with 15 ppm of sulfur or less) or ULSD blended with the following lower-carbon intensity fuels** up to: 20% biodiesel FAME (fatty acid methyl ester)* or 100% renewable diesel, HVO (hydrotreated vegetable oil) and GTL (gas-to-liquid) fuels. Refer to guidelines for successful application. Please consult your Cat dealer or “Caterpillar Machine Fluids Recommendations” (SEBU6250) for details.

*Engines with no aftertreatment devices can use higher blends, up to 100% biodiesel (for use of blends higher than 20% biodiesel, consult your Cat dealer).

**Tailpipe greenhouse gas emissions from lower-carbon intensity fuels are essentially the same as traditional fuels.

Transmission

Maximum Travel Speed	20 km/h	12.4 mile/h
Drawbar Pull	127 kN	28,551 lb/ft
Maximum Gradeability	52%	

Hydraulic System

Maximum Pressure – Implements	35 000 kPa	5,076 psi
Maximum Pressure – Swing	39 000 kPa	5,656 psi
Maximum Pressure – Travel	35 000 kPa	5,076 psi

Swing Mechanism

Swing Speed	8 r/min	
Maximum Swing Torque	70 kN·m	51,800 lbf·ft

Weights

Operating Weight	29 200 kg	64,370 lb
Operating weight includes full fuel tank, operator, 1400 kg (3,086 lb) work tool. Weight varies depending on configuration.		

Service Refill Capacities

Fuel Tank Capacity	416 l	109.9 gal
Cooling System	40 l	10.6 gal
Engine Oil	20 l	5.3 gal
Rear Axle – Housing (Differential)	14 l	3.7 gal
Final Drive – Each	2.5 l	0.7 gal
Powershift Transmission	2.5 l	0.7 gal
Hydraulic System – Including Tank	345 l	91.1 gal
Hydraulic Tank	209 l	55.2 gal
Diesel Exhaust Fluid (DEF) Tank	30 l	7.9 gal

Dimensions

Boom	Material Handler (MH) 7.5 m (24'7")	
Stick	6.0 m (19'8") Drop Nose	
Shipping Length	10 700 mm	35.1 ft
Machine Length	5450 mm	17.9 ft
Tail Swing Radius	2800 mm	9.2 ft
Counterweight Clearance	1305 mm	4.3 ft
Cab Height- Lowered	3350 mm	11 ft
Cab Height-Lowered with OPG	3375 mm	11.1 ft
Cab Height-Raised	5750 mm	18.9 ft
Cab Height-Raised with OPG	5,775 mm	18.9 ft
Wheel Base	2750 mm	9 ft
Shipping Width	2990 mm	9.8 ft
Ground Clearance	240 mm	0.8 ft
Undercarriage Length	5300 mm	17.4 ft

Working Ranges

Boom	MH 7.5 m (24'7")	
Stick	6.0 m (19'8") Drop Nose	
Maximum Reach	13 000 mm	42.7 ft
Maximum Height	14 270 mm	46.8 ft
Minimum Dump Height	3810 mm	12.5 ft
Maximum Depth	2970 mm	9.7 ft
Boom Pin Height	9300 mm	30.5 ft

Air Conditioning System

The air conditioning system on this machine contains the fluorinated greenhouse gas refrigerant R134a (Global Warming Potential = 1430). The system contains 1.05 kg (2.31 lb) of refrigerant which has a CO₂ equivalent of 1.502 metric tonnes (1.655 tons).

STANDARD & OPTIONAL EQUIPMENT

Note: Standard and optional equipment may vary. Consult your Cat dealer for details.

	Standard	Optional
BOOMS AND STICKS		
6.9 m (22'8") Straight MH boom		✓
7.5 m (24'7") Straight MH boom		✓
5.0 m (16'5") Straight stick		✓
5.5 (18'1) Drop Nose stick		✓
6.0 m (19'8") Drop Nose stick		✓
CAB		
Advanced sound-suppressed Tip Over Protective Structure (TOPS) certified cab	✓	
High-resolution 254 mm (10") LCD touch screen monitor	✓	
Automatic bi-level air conditioner	✓	
Jog dial and shortcut keys for monitor control	✓	
Keyless push-to-start engine control	✓	
Heated seat with air suspension (Deluxe cab)	✓	
Heated and cooled seat with automatic adjustable suspension (Premium cab)	✓	
Advanced cab filtration		✓
Fixed one-piece laminated windshield (P5A glass)		✓
Fixed two-piece laminated windshield (P8B glass)		✓
Operator Protective Guards (OPG)		✓
SAFETY AND SECURITY		
Rear and right-side-view cameras	✓	
Signal/warning horn	✓	
Neutral lever (lock out) for all controls	✓	
Ground-level accessible secondary engine shutoff switch in cab	✓	
2D E-fence	✓	
Cab Avoidance	✓	
Swing Assist	✓	
360° visibility		✓
Rotating beacon on cab		✓
SERVICE AND MAINTENANCE		
Scheduled Oil Sampling (S·O·S SM) ports	✓	
Automatic lubrication system for implement and swing system	✓	
Integrated vehicle health management system	✓	
ELECTRICAL SYSTEM		
Maintenance-free batteries	✓	
LED chassis light, left-hand/right-hand boom and stick lights, cab lights – 1800 lumens	✓	
Centralized electrical disconnect switch	✓	
Programmable time delay LED working lights	✓	

	Standard	Optional
CAT TECHNOLOGY		
VisionLink®	✓	
Remote Flash and Remote Troubleshoot	✓	
Cat Payload	✓	
HYDRAULIC SYSTEM		
Boom and stick lowering control check valves	✓	
Electronic main control valve	✓	
Automatic hydraulic oil warm up	✓	
Heavy lift mode	✓	
UNDERCARRIAGE AND STRUCTURES		
All wheel drive	✓	
Automatic brake/axle lock	✓	
Creeper speed	✓	
Electronic swing and travel lock	✓	
Heavy-duty axles, advanced disc brake system, and travel motor with adjustable braking force	✓	
Lockable, oscillating front axle with remote greasing point	✓	
Two speed hydrostatic transmission	✓	
Counterweight 5700 kg (12,550 lb)	✓	
2.99 m (9'10") wide undercarriage		✓
2.99 m (9'10") wide undercarriage with push blade		✓
10.00-20, dual, solid rubber tires		✓
11.00-20 16 PR, dual tires		✓
Side, rear, or front end access steps		✓
ENGINE		
Cat C7.1 diesel engine	✓	
Three selectable modes: Power, Smart, Eco	✓	
Up to 3000 m (9,840 ft) altitude capability without engine power de-rate	✓	
Cold start capability –18°C (0°F)	✓	
52°C (125°F) high-ambient cooling capability	✓	
Electric fuel priming pump	✓	
On-demand electric cooling fans with auto-reverse function	✓	
Waste cooling system		✓

For more complete information on Cat products, dealer services and industry solutions, visit us on the web at www.cat.com.

© 2025 Caterpillar. All Rights Reserved.

Materials and specifications are subject to change without notice. Featured machines in photos may include additional equipment. See your Cat dealer for available options.

CAT, CATERPILLAR, LET'S DO THE WORK, their respective logos, SmartBoom, S-O-S, Product Link, "Caterpillar Corporate Yellow," the "Power Edge" and Cat "Modern Hex" trade dress as well as corporate and product identity used herein, are trademarks of Caterpillar and may not be used without permission. VisionLink is a trademark of Caterpillar Inc., registered in the United States and in other countries.
www.cat.com www.caterpillar.com

AEXQ4223-00
Build Number: 07E
(Aus-NZ, Europe,
N Am, Türkiye)

