

Name to trust

The strength and reliability of Cat® machinery from Hastings Deering has been a vital component for the ongoing growth of Crushing Dynamics' quarry operations in Queensland

Head down the impressively named Flame Trees Drive in Yatala, situated between Brisbane and Gold Coast, and you'll pass trailer suppliers, metal recycling and boat builders before eventually reaching the gates of Yatala Quarry, operated by Crushing Dynamics.

A medium-sized hard rock quarry producing between 4,000 and 6,000 tonnes a day of aggregates, roadbase and fill material, amongst the

crushing and screening plants you'll see a fleet of yellow Cat machinery busy shoveling and transporting rock.

Crushing Dynamics quarry manager Bob Campbell says the company originally started in NSW as a mobile crushing contractor before heading over the border into Queensland to take on the lease for the quarry and expand operations. "We're a small, family-owned

business and we're growing every year," Campbell says.

"We deliver a great product and providing a high level of customer service is key to our success. We recently expanded our crushing plant and are bringing in more Cat machines from Hastings Deering to help with the expanded throughput, so it's going very well."

Quality Cats

At Yatala Quarry, Crushing Dynamics is extracting metagraywacke rock, a type of hard rock. Campbell says that with this kind of material, you need machinery that can handle rough conditions, which is why Caterpillar machinery sources from local dealer Hastings Deering was his first choice to build up a fleet for the site.

"I've managed a number of different quarries and, over time, you get to know the difference between the various brands and bits of gear," he says.

"I've always preferred Caterpillar as a brand, they make great machines. So, when I was in the position to decide on what equipment this site should have, I chose Caterpillar because my

Images: Hastings Deering

Crushing Dynamics owner
Pete Murray



A variety of Cat excavators, wheel loaders and off-highway trucks are working at Yatala Quarry

A second Cat 772G off-highway truck is on order



experience with them has always been great."

Currently on site are a Next Generation Cat 349 excavator and a couple of Cat 336 excavators, alongside Cat 980 and 982 model wheel loaders and a Cat 772G off-highway trucks.

"These Cat machines, they dig through it and pull the material out quite easily," Campbell says.

"They've got the power there to move that rock, which is great."

The newest addition to the site was a Cat 982 35.5-tonne wheel loader that has a Cat C13 303kW (406hp) engine, engine torque of 2,172Nm @ 1,800rpm, a top forward speed of 37.5km/h, a top reverse speed of 39.5km/h, a bucket capacity of up to 12.6 cubic metres and lift arm clearance of 3.9m.

Campbell says Crushing Dynamics decided to buy this model because it has "a really good capacity bucket so you can move more material with them, and they're just an all-round great machine that are a little bit quicker than the 980s".

A second Cat 982 wheel loader has been ordered and will join the fleet in July, with a second Cat 772G off-highway truck on order. Using a Cat C18 Acert 446kW (598hp) engine and with a target payload of 47.2

tonnes with maximum allowable payload (120 per cent)* of 56.6 tonnes, Campbell says the 772G was chosen as it is "a good size for our quarry and for tipping into our plant".

Tech assist

In addition to Cat machinery's ability to tackle the hard rock of Yatala Quarry, Campbell says the technology available to assist operators and himself as quarry manager has been a significant boost to the quarry's productivity. The Next Generation Cat 349

excavator for example includes Cat Grade and Grade Assist to enable more accurate cutting, Cat Payload for constant load monitoring, Lift Assist that tracks the weight of material in the bucket, E-Fence to contain the excavator within a defined area and Cat Product Link that provides machine information to Caterpillar's VisionLink® interface to assist with operation management.

"Having access to real-time data such as fuel burn and idle time on VisionLink has made my job a lot easier because I can sit in

Real-time data through VisionLink keeps the site running smoothly





↑
The Cat machines easily dig through the rock

my office and see exactly what the machines are doing at any time," Campbell says.

"I can see how hard they are working or if there are any problems on site and unexpected idling.

"The payload system is also great because I can see how much material an excavator or truck has moved in a day. As we do a lock of stockpiling from the crushers and screens, we count our production by the load. So, at the end of each day, I can see the total amounts stockpiled and get all of my figures straight off the platform."

Hastings Deering

Crushing Dynamics' local Cat dealer is Hastings Deering,

which Campbell has been buying machinery from for 25 years.

He says the quality of Cat machinery is backed by the level of aftersales service that he receives from the dealer.

"If I've ever had any queries about a machine or the technology, I just jump straight on the phone with Hastings Deering and they're more than helpful," he says.

"They'll either give me advice over the phone, or if it's something they need to come out and have a look at, they'll get somebody out pretty quickly and give us guidance.

"Not only are they helpful, but the team I work with has a lot of knowledge, which benefits us as a business. A lot of the Hastings

Deering team have been in the industry for a long time, and they know their stuff, so it's great to ring someone that has that know-how and can get us set on the right track."

Getting operators up and running with new machinery has also been a breeze he says, with Hastings Deering providing on-site training.

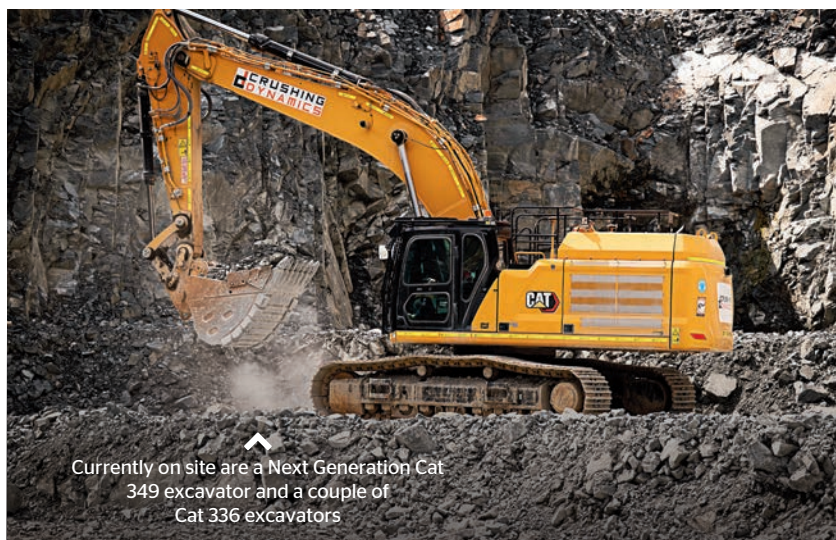
"When we get a new delivery, a Hastings Deering trainer will come out to the quarry and give everybody a rundown on the machine, how to use all of the various functions and how we can get the full benefit from the gear," Campbell says.

"Our operators have found Cat machinery and the systems very easy to work with.

"Overall, we find that Caterpillar and Hastings Deering gives us the reliability and support we need to have fewer breakdowns and higher productivity. Those two things are key for our business." **EE**

For more information on the Cat range available from Hastings Deering, visit:
www.hastingsdeering.com.au

* Target payload and capacity based on Dual Slope body with no liner. Attachment selection will affect payload and maximum gross machine operating weight. Refer to Caterpillar 10/10/20 Payload Policy for maximum gross machine weight limitations.



↑
Currently on site are a Next Generation Cat 349 excavator and a couple of Cat 336 excavators