

GOVERNMENTAL **SOLUTIONS**

2025 BUYERS' GUIDE

A CATERPILLAR PUBLICATION SERVING GOVERNMENTAL AGENCIES



2025 BUYERS'
GUIDE

CATERPILLAR®

COOPERATIVE PURCHASING WITH CATERPILLAR

Every governmental agency faces resource constraints. Budgets are tight and the workload never quits. If you're responsible for procuring heavy equipment under these conditions, it's hard to be successful on the job.

Cooperative purchasing can help.

WHY COOPERATIVE PURCHASING?

Cooperative contracts help you acquire the equipment you need quickly and better manage your budget, so you never have to compromise on machines and service.

SAVE TIME

Improve procurement efficiency so you can put new equipment to work faster.

CONTROL COSTS

Don't spend valuable budget dollars soliciting bids, reviewing proposals and awarding contracts.

MANAGE RISK

Avoid unexpected repair costs and other budget surprises that may arise when you buy utilizing the low-bid option.

LIFE CYCLE COST CALCULATION

It's important to evaluate equipment purchases from a total cost perspective, as purchase price is just one small component. Choosing the low bid can actually cost more in the long run. Here is one well-accepted method to determine total cost:

INITIAL PURCHASE PRICE

- Trade-In
- + Maintenance
- + Repairs
- + Fuel and inputs
- Resale value

TOTAL COST OF OWNERSHIP

TAKE YOUR PICK

Caterpillar is pleased to make our equipment available through the cooperative purchasing contract with OMNIA Partners, NASPO or Sourcwell. Get the assets you need to be more successful when you buy or rent Cat® products using one of these agreements:



OMNIA PARTNERS CONTRACT #212816

New equipment, parts, service, rental, used equipment and related services

SOURCEWELL CONTRACT #011723-CAT

New Heavy equipment, parts & service

SOURCEWELL CONTRACT #020223-CAT

New Medium & CCE equipment, parts & service

SOURCEWELL CONTRACT #060122-CAT

New paving equipment, parts & service

SOURCEWELL CONTRACT #040924-CAT

Rental, used equipment & related services

SOURCEWELL CONTRACT #092222-CAT

Backup power systems and services

NASPO VALUEPOINT CONTRACT #OK-SW-192-200

Construction equipment and warranty work with replacement parts

MORE THAN NEW MACHINES AND ATTACHMENTS

Cooperative purchasing contracts often go beyond machines to include the parts and service you need to keep your operation running smoothly. With Caterpillar, you'll have access to:



Service

Whether a machine needs routine maintenance or an unplanned repair, Cat® dealers are well equipped to meet any service needs.



Parts

Genuine OEM parts are the best option to keep your machines running. Your local Cat dealer can accept POs using your Sourcwell member number.



Rental Equipment

Your Cat dealer has a full line of equipment available to rent for short- or long-term needs. From light towers to wheel loaders, your Cat dealer has you covered.



Used Equipment

A good used machine can be an excellent value. Caterpillar ensures you have access to this buying option if you decide it's right for your agency.

REGISTER TODAY

In just a few minutes, you can register and start reaping the benefits. Participation is free and there is no obligation to purchase. It's the easiest way to take advantage of cooperative purchasing agreements that will save your agency time and money procuring equipment. Participation is available for all government, education and non-profit entities.



omniapartners.com



sourcwell-mn.gov



naspo.org

Succeeding Together

No matter how you define success, we work to help you achieve it. We invite you to learn more about using cooperative purchasing to achieve your goals.

Your Cat dealer can help determine which contract is right for you and can also provide information about any state and local cooperative purchasing options.

GOVERNMENTAL SOLUTIONS

2025 BUYERS' GUIDE

21

COMPACT TRACK & SKID STEER LOADERS

A new performance standard

16

MOTOR GRADERS

Power and precision for all grading jobs

25

TELEHANDLERS

Top performance, rugged construction for reliability and durability with low operating costs.

CONTENTS

APPLICATIONS

Road Construction, Maintenance & Repair	4
Paving	5
Landfill Solid Waste Disposal	6
Solid Waste Transfer Stations	7
Green Waste & Composting	8
Underground Utilities	9
Forestry Services	10
Parks & Recreation	11
Education	12
Snow & Ice Removal	13
Disaster Recovery	14
Power Generation	15

MACHINES

Motor Graders	16
Dozers	17
Hydraulic Excavators	18
Wheeled Excavators & Material Handlers	19
Backhoe Loaders	20
Compact Track & Skid Steer Loaders	21
Wheel Loaders	22
Landfill Compactors & Track Loaders	23
Scrapers & Articulated Trucks	24
Telehandlers	25
Attachments	26

DEALER SUPPORT

Governmental Financing	28
Rental & Cat Used	29
Excavator Rebuild	30
Detect & Assist Technology	31

CAT.COM/GOVERNMENTAL

Includes complete specifications for all machines. Learn more online.

Governmental Solutions is published by High Velocity Communications Inc. on behalf of Caterpillar and your Cat Dealer. Editor, John Rony • Creative Director, Jay Blazek • Director of Client Services, Kelly Pemper. Every effort has been made to ensure specifications are accurate. Because specifications are subject to change without notice, check with us, your Cat Dealer, for the latest equipment information. Some photography provided courtesy of Caterpillar Inc. High Velocity Communications Inc., 1720 Dolphin Drive, Suite D Upper, Waukesha, WI 53186-1489. Phone (262) 544-6600. Please submit address corrections and changes via e-mail to: Kelly@HighVelocityCommunications.com. © 2025 High Velocity Communications Inc. Printed in the U.S.A. **Volume 25 Number 1 Buyers' Guide.** © 2025 Caterpillar. All Rights Reserved. CAT, CATERPILLAR, LET'S DO THE WORK, their respective logos, "Caterpillar Yellow", the "Power Edge" and Cat "Modern Hex" trade dress as well as corporate and product identity used herein, are trademarks of Caterpillar and may not be used without permission. VisionLink® is a trademark of Trimble Navigation Limited, registered in the United States and in other countries.

- ADDED FUEL SAVINGS.
- USE ECO MODE WITHOUT LOSS OF PRODUCTIVITY.

ROAD CONSTRUCTION, MAINTENANCE & REPAIR

Governmental agencies engage in a wide range of road projects focused on safety and providing a smooth traffic flow. Road maintenance, repair and new construction are typical responsibilities. Activities include pothole filling, broken pavement replacement, curb-and-gutter repairs, asphalt patching, and paving/repaving projects. For unpaved, rural roads, assignments include grading, rebuilding and compacting gravel driving surfaces, crown building, and ditch shaping/cleaning to facilitate water runoff.



MOTOR GRADERS All Models

Attachments

- Moldboards (Blades)
- Cutting Edges
- Scarifiers
- Rippers
- Straight Blade



DOZERS Small/Medium/Large

Attachments

- General Purpose/Specialty Blades
- Rippers
- Winches
- Precision GPS Blade Control



BACKHOE LOADERS All Models

Attachments

- Front (Bucket End)
- Wide Range of Bucket Types/Sizes
 - Brooms
 - Pallet Forks
- Rear (Backhoe End)
- Wide Range of Bucket Types/Sizes
 - Bucket Thumb
 - Hydraulic Hammers
 - Plate Compactors
 - Cold Planers



SKID STEER LOADERS & COMPACT TRACK LOADERS

All Models

Attachments

- Cold Planers
- Plate Compactors
- Brooms
- Hydraulic Hammers
- Drum Compactor
- Pallet Forks



WHEEL LOADERS Compact/Small/Medium

Attachments

- Wide Range of Bucket Types/Sizes
- Brooms
- Pallet Forks
- Fusion Coupler



WHEELED EXCAVATORS All Models

Attachments

- Wide Range of Bucket Types/Sizes



HYDRAULIC EXCAVATORS Mini, Small, Medium & Large

Attachments

- Wide Range of Bucket Types/Sizes
- Bucket Thumb
- Hydraulic Hammers
- Grapples
- Shears
- Cold Planers
- Plate Compactors
- Bucket Tiltrotators

- 2D & 3D TECHNOLOGIES
- PRECISION MILLING & PAVING
- BROAD EQUIPMENT SELECTION

PAVING

Public Works Departments are responsible for maintaining and improving roads including patching and paving. Managers oversee routine maintenance such as filling potholes, sealing cracks and repaving deteriorated sections to ensure safe and smooth travel. They may also have their own crews engaged in major repaving projects and even building new roads. Whatever the scope of your agency's responsibilities, Caterpillar meets your needs with a full range of equipment sizes and configurations for building and/or maintaining everything from biking trails/cart paths and parking lots, to roads, streets and highways.



SOIL COMPACTORS All Models

- 22 Models
- Compaction Widths: 50 to 84 in
- Weights: 10,307 to 41,641 lb
- HP: 74.6 to 175.7



ASPHALT PAVERS All Models

- 4 Track Pavers: 8 – 33 ft Paving Widths
- 4 Wheel Paver: 8 – 25.5 ft Paving Widths
- Asphalt Screeds with front or rear extenders
- Cat® SDX Screed Plate System



ASPHALT COMPACTORS All Models

- Tandem Vibratory Rollers
- 18 Models: 35 – 84 in
- Pneumatic Rollers
- 2 Models: 68 – 84 in



COLD PLANERS All Models

- 8 Models
- Cutting Widths: 39.4 to 98.6 in
- Weights 46,776 to 82,673 lb
- HP: 343.0 to 806.0



ROAD RECLAIMERS All Models

- 5 Models
- Cutting Widths: 96 in
- Weights: 57,682 to 79,397 lb
- HP: 415.7 TO 762.0

LANDFILL SOLID WASTE DISPOSAL

Landfill construction includes building access roads, excavating multiple cells in preparation for solid waste disposal, stockpiling cover material, installing cell liners, and contouring the overall landfill site and each cell for drainage compliance. Landfill operation involves ongoing haul road maintenance, spreading and compacting the solid waste, spreading and compacting daily cover material to maximize waste volume and density in each cell, and sealing each cell by spreading a thicker top layer of cover material in preparation for future use.

- IMPROVED GUARDING.
- LESS MAINTENANCE.
- ENHANCED OPERATOR COMFORT.



LANDFILL COMPACTORS
All Models

Attachments

- Straight Blade
- Semi U-Blade
- U-Blade
- Push & Doze Bucket
- Choice of Compaction Wheels & Tips



HYDRAULIC EXCAVATORS
Mini, Small, Medium & Large

Attachments

- Bucket Thumb
- Trash Grapple
- Sorting Grapple
- Orange Peel Grapple
- Clamshell Bucket



DOZERS
D5, D6, D6 XE, D7, D8, D9

Attachments

- Landfill Blade
- Front & Rear Debris Striker Bars
- Tank Guarding – Fuel, DEF, Hydraulics
- Tilt Cylinder Guarding



WHEELED EXCAVATORS
All Models

Attachments

- Bucket Thumb
- Trash Grapple
- Sorting Grapple
- Orange Peel Grapple
- Clamshell Bucket



TRACK LOADERS
953, 963, 973

Attachments

- Waste Handling Bucket
- All-Purpose Bucket
- Tamp & Clamp Bucket
- Utility Grapple Bucket
- High-Dump Bucket
- Fusion Coupler
- Carriage & Pallet Forks
- Angle Broom & Sweeper-Collector



ARTICULATED TRUCKS
All Models

Technology

- Cat ProductLink™
- Cat Production Measurement
- Cat Detect with Stability Assist



SOLID WASTE TRANSFER STATIONS

Transfer stations receive municipal solid waste that is mostly destined for landfill disposal. The waste is unloaded onto the transfer station floor from multiple route-collection vehicles or containers. Some sorting may be required to remove waste that isn't landfill qualified. The acceptable waste is then reloaded into high-volume, longer-distance transfer vehicles that transport the solid waste to landfills for final disposal.



- LOWER ENGINE SPEED REDUCES FUEL BURN.
- MORE REFINED CONTROL WITH CONSISTENT AND PREDICTABLE STOPPING DISTANCES.



COMPACT, SMALL & MEDIUM WHEEL LOADERS
920, 930, 938, 950, 966, 972

Attachments

- High Dump Bucket
- High-Capacity, Low-Material-Density Waste Bucket
- Push and Doze Bucket
- Tamp & Clamp Bucket



MATERIAL HANDLERS
MH3022, MH3024, MH3026

Attachments

- Sorting Grapple
- Trash Grapple
- Orange Peel Grapple
- Rotating Beacon



WHEELED EXCAVATORS
All Models

Attachments

- High-Capacity, Low-Material-Density Bucket
- Front-Scoop Bucket
- Sorting Grapple
- Dozer-Style, Clean-up Blade

- MATCH MACHINE SIZE AND BUCKET TO VOLUME.
- VERSATILITY TO MATCH MATERIAL HANDLING NEEDS.

GREEN WASTE & COMPOSTING

Green waste consists of any organic waste that can be composted. Usually containing high concentrations of nitrogen, green waste is used to increase the efficiency of many composting operations and is very useful as a soil additive to sustain local nutrient cycling. Machine applications include unloading, stockpiling and frequent mixing/re-handling of materials to facilitate the composting process, plus loading of customers' trucks with finished compost product.



MINI EXCAVATORS

305 CR, 306 CR, 307.5, 308 CR, 309 CR, 310

Attachments

- High-Capacity, Low-Material-Density Buckets
- Quick Coupler
- Bucket Thumb
- Augers
- Hammers
- Grapples



SKID STEER LOADERS

226D3, 232D3, 236D3, 250, 260, 270, 270 XE

Attachments

- High-Capacity, Low-Material-Density Buckets
- Multi-Purpose Bucket
- Industrial Grapple Bucket
- Brooms



WHEEL LOADERS & TRACK LOADERS

Wheel – 903, 906, 907, 908, 910, 914, 920, 926, 930, 938, 950, 966, 972, 980, 982

Track – 953, 963, 973

Attachments

- High-Dump Bucket
- High-Capacity, Low-Material-Density Waste Bucket
- Tamp & Clamp Bucket
- Trash Grapple
- Loader Rakes

- **TECHNOLOGY IMPROVES PRODUCTIVITY.**
- **POWERFUL HYDRAULICS, IMPROVED SWING TORQUE.**
- **LOWER MAINTENANCE COSTS.**

UNDERGROUND UTILITIES

Underground utility lines include water, sewer, electric, gas, telephone, fiber optics and Internet cables. Machinery applications involve trench excavating and truck loading of spoil material for original installation, repair and replacement. Other jobsite activities include pipe unloading and handling, trench backfilling with gravel, crushed stone and dirt, compacting fill material, and seeding-sodding.



SKID STEER LOADERS & COMPACT TRACK LOADERS

All Models

Attachments

- Trenchers
- Utility Grapple Forks
- Vibratory Drum Compactor



BACKHOE LOADERS

All Models (includes 415 IL)

Attachments

- Wide Choice of Front/Rear Buckets
- Hydraulic Hammers
- Bucket Thumb
- Plate Compactor



HYDRAULIC EXCAVATORS

All Compact & Small Models

Attachments

- Wide Choice of Excavating Buckets
- Plate Compactor
- Hydraulic Hammers
- Bucket Tiltrotators



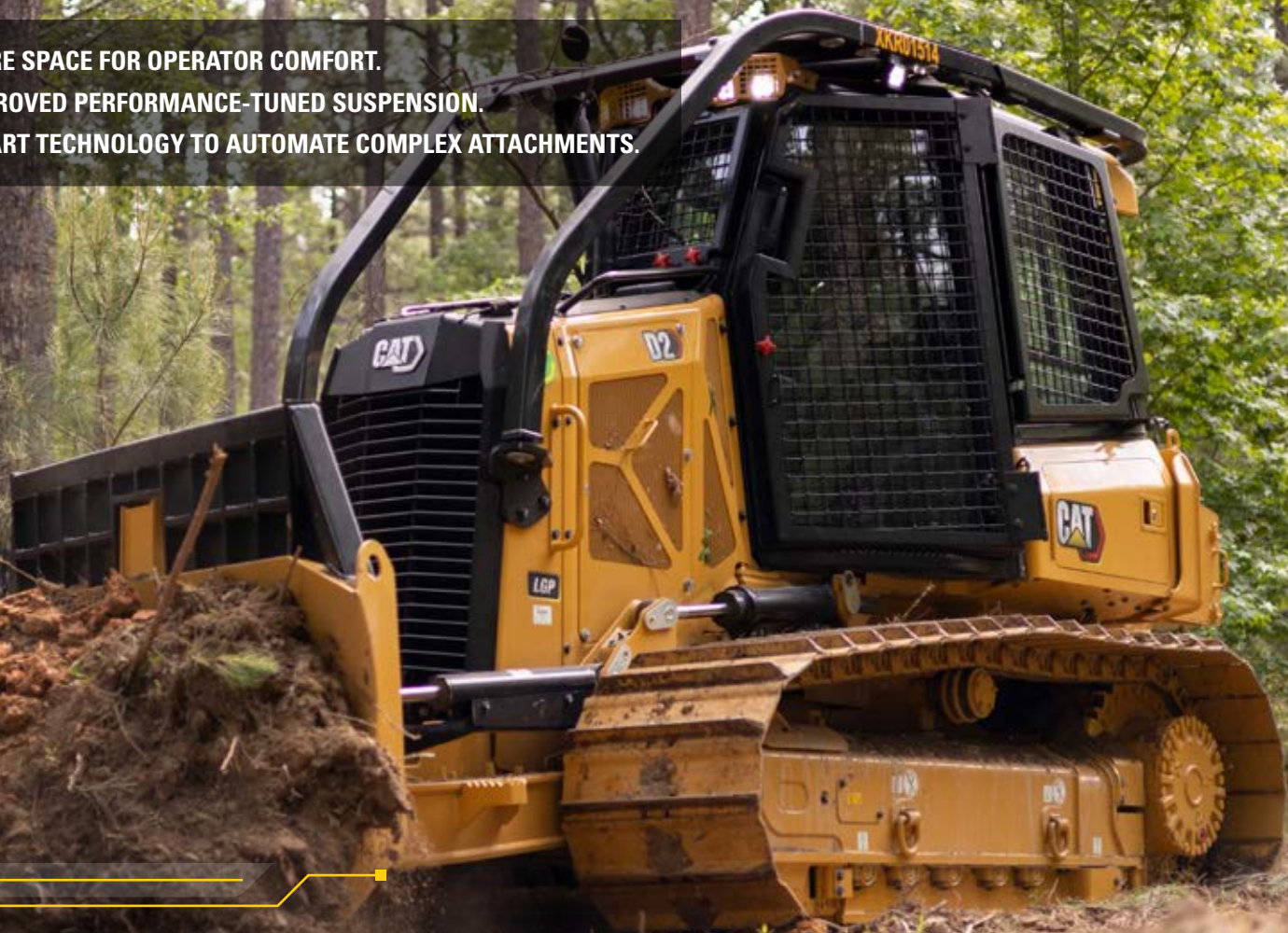
UTILITY COMPACTORS

CB2.5, CB2.7, CB2.9, CB4.0

Benefits

- Simple to Operate
- Designed for Rental
- Technology Ready

- **MORE SPACE FOR OPERATOR COMFORT.**
- **IMPROVED PERFORMANCE-TUNED SUSPENSION.**
- **SMART TECHNOLOGY TO AUTOMATE COMPLEX ATTACHMENTS.**



FORESTRY SERVICES

Many governmental agencies, especially in larger municipalities, have a dedicated forestry department. Responsibilities typically include planning, planting, watering and trimming the complete range of trees and bushes. Some even establish and maintain their own centralized nursery operation. Heavy machinery and specialized attachments facilitate planting, mulching, watering, trimming, tree and brush removal/disposal, powerline maintenance, and construction of fire breaks.



BACKHOE LOADERS All Models (includes 415 IL)

Attachments

- Bucket
- Box Blade Scarifier
- Material Handler Arms
- Forks



SKID STEER LOADERS & COMPACT TRACK LOADERS All Models

Attachments

- Auger
- Brushcutter
- Mulcher
- Stump Grinder



WHEEL LOADERS Compact/Small/Medium

Attachments

- Grapple Bucket
- Pallet Forks
- Snow Blowers/Pushes
- Brooms



DOZERS Small/Medium/Large

Attachments

- General Purpose/Specialty Blades
- Mulchers
- Precision GPS Blade Control

- ADDITIONAL CAPACITY IN NEW LINE OF BUCKETS.
- SMART TECHNOLOGY TO AUTOMATE COMPLEX ATTACHMENTS.
- REDESIGNED, MORE COMFORTABLE CAB.

PARKS & RECREATION

Municipal crews perform maintenance tasks such as mowing parks, greenways, cemeteries, and boulevards using mowers and string trimmers. Other activities include planting, light earthmoving, landscaping, load and carry operations and truck loading. May also include playground construction and trail installation.



SKID STEER LOADERS & COMPACT TRACK LOADERS

All Models

Attachments

- Wide Range of Bucket Types/Sizes
- Auger
- Mulcher
- Stump Grinder
- Trencher
- Rakes
- Brushcutters
- Utility Grapple Forks



MINI EXCAVATORS

305 CR, 306 CR, 307.5, 308 CR, 309 CR, 310

Attachments

- Wide Range of Bucket Types/Sizes
- Auger
- Mulcher
- Brushcutters
- Bucket Tiltrotators
- Grapples
- Thumb



BACKHOE LOADERS

All Models (includes 415 IL)

Attachments

- Wide Range of Bucket Types/Sizes
- Material Handling Arm
- Forks
- Brooms



UTILITY COMPACTORS

CB2.5, CB2.7, CB2.9, CB4.0

Benefits

- Simple to Operate
- Designed for Rental
- Technology Ready

EDUCATION

Whether contracted, partially owned or rented, a wide range of equipment and attachments is utilized on the campuses of educational institutions to maintain existing facilities or build new structures. Machine categories typically include skid steer loaders, compact track loaders, backhoe loaders, wheel loaders and hydraulic excavators.

- **LARGER CAB, GREATER VISIBILITY.**
- **LOWER FUEL CONSUMPTION.**
- **LOWER MAINTENANCE COSTS.**



WHEEL LOADERS
Compact/Small/Medium

Attachments

- Wide Range of Bucket Types/Sizes
- Broom
- Pallet Forks
- Fusion Coupler



SKID STEER LOADERS & COMPACT TRACK LOADERS

All Models

Attachments

- Wide Range of Bucket Types/Sizes
- Plate Compactors
- Brooms
- Hydraulic Hammers
- Pallet Forks



BACKHOE LOADERS

All Models

Attachments

Front (Bucket End)

- Wide Range of Bucket Types/Sizes
- Broom
- Pallet Forks

Rear (Backhoe End)

- Wide Range of Bucket Types/Sizes
- Bucket Thumb
- Hydraulic Hammers
- Plate Compactors



DOZERS

Small/Medium

Attachments

- General Purpose/Specialty Blades
- Rippers
- Winches
- Precision GPS Blade Control



HYDRAULIC EXCAVATORS
All Compact, Small & Medium

Attachments

- Wide Choice of Excavating Buckets
- Plate compactor
- Grapples
- Hammers

- NEW 906 CAB WITH OUTSTANDING VISIBILITY.
- "SHIFT ON GO" HYDROSTATIC TRANSMISSION.
- SEAT-MOUNTED CONTROLS WITH INTEGRATED DISPLAY SCREEN.



SNOW & ICE REMOVAL

Municipal crews plow snow from city streets and along miles of country roads. Governmental agency responsibilities also include plowing and/or blowing snow from sidewalks, parking lots and other municipal facilities. Loading salt and removing snow from large areas such as airports, parks and a wide range of municipal facilities are also important.



BACKHOE LOADERS All Models (includes 415 IL)

Attachments

- Wide Range of Bucket Types/Sizes
- Snow Plows
- Snow Pushes
- Brooms



SKID STEER LOADERS & COMPACT TRACK LOADERS All Models

Attachments

- Wide Range of Bucket Types/Sizes
- Snow Plows/Multi V-Plow
- Snow Blowers
- Angle Brooms
- Snow Pushes



WHEEL LOADERS 906, 908, 910, 914, 920, 926, 930, 938

Attachments

- Wide Range of Bucket Types/Sizes
- Snow Plows
- Snow Pushes
- Snow Blowers
- Angle Brooms



MOTOR GRADERS All Models

Attachments

- Snow Plows
- Snow Wings
- Scarifiers
- Front Blades

DISASTER RECOVERY

Caterpillar and Cat® dealers have extensive experience assisting governmental agencies and first responders cleaning up in the wake of natural disasters. Cleanup from storms, hurricanes and floods can include cutting and removal of downed trees and branches, clearing, pickup and truck loading of storm debris from streets, driveways, parking lots, public areas, and private yards. Plus, provide emergency rental power to municipal facilities. Also, demolish severely damaged buildings when necessary.



RENTAL GENERATORS
Multiple Units of Various kVA Ratings and Configurations



WHEEL LOADERS
Compact/Small/Medium

- Attachments
- Wide Range of Bucket Types/Sizes
 - Brooms
 - Pallet Forks
 - Fusion Coupler



HYDRAULIC EXCAVATORS
Mini, Small & Medium

- Attachments
- Bucket Thumb
 - Trash Grapple
 - Sorting Grapple
 - Orange Peel Grapple
 - Hammer



WHEELED EXCAVATORS
All Models

- Attachments
- Hydraulic hammers
 - Trash grapple
 - Buckets



SKID STEER LOADERS
All Models

- Attachments
- Buckets
 - Brooms
 - Hydraulic hammers
 - Utility grapple forks



COMPACT TRACK LOADERS
All Models

- Attachments
- Buckets
 - Brooms
 - Hydraulic hammers
 - Utility grapple forks



- LOWER OWNERSHIP COSTS.
- MORE PRODUCTIVITY.
- EXCLUSIVE CAT FEATURES IN A MINI EXCAVATOR.

POWER GENERATION

Generator sets provide prime and standby power for wastewater facilities. Diesel generators are utilized by municipalities for back up power to buildings and other critical functions. Biogas derived from landfills fuels gas generator sets that produce electric power. Rental power is utilized whenever temporary mobile power is needed.



GENERATOR SETS

All GC Models

Benefits

- GC Models Have Small Footprints
- Reliability Tested for 500 Hours
- Scalable Systems



STANDBY GENERATORS

All Diesel Retail Models, 3400 & 3500 Series

Benefits

- Over 1,000 Hours Continuous Runtime
- Remote Monitoring
- Seamless Design



LARGE GENERATOR SETS

Prime Power (Gas) G3508, G3512, G3516H, G3520

Benefits

- Runs on Wide Range of Fuels
- Ready to Accept 100% Blockload
- Flexible Packaging Options



RENTAL GENERATORS

All Models

Benefits

- Durable Design
- Sound Attenuated
- User-friendly Interface



MOTOR GRADERS

120

120 GC

140

140 GC

150

160

14

Motor Graders | 120, 120 GC, 140, 140 GC, 150, 160, 14

- Net Power first gear: 154 hp – 238 hp
- Operating Weights: 31,958 lb – 57,250 lb
- Technology packages are available in a wide variety of levels to help meet your agency's needs. Whether operators need a basic indication of slope or accessibility to equip your machine with 2D or 3D machine control and guidance systems, Cat® Motor Graders can address your application needs.
- Cat GRADE with cross slope for motor graders helps you achieve grade faster with more accuracy, efficiency, and productivity.
- Stable Blade is an industry-exclusive, patented technology that detects machine bounce, and automatically reduces machine speed as needed before the operator even notices the need.¹ Once stabilized, the machine returns to its original speed without operator intervention.
- Auto Articulation enables your agency's Cat Motor Graders to articulate automatically when steered, improving performance and maneuverability in tight spaces.²
- E-Fence Blade Avoidance protects the machine by inhibiting the blade from hitting the tires, ladders and linkbar.³
- Serviceability features unique to Cat models help keep uptime high and performance strong. Cat Top Adjust Drawbar wear inserts provide easy access from the top of the drawbar.⁴ Low-cost, replaceable bronze wear inserts in the lift and centershift cylinder ends help maintain factory tightness.

¹ Stable Blade is not available on the 120 GC and 140 GC

² Auto articulation is only available on joystick models

³ E-Fence Blade Avoidance is available with Cross slope assist, 3D Grade Ready, or Grade 3D on the 140/150/160 Joystick Machines

⁴ Top Adjust is not available on the 120 GC and 140 GC

Note: Additional features available for most models, consult our dealership for more information.



DOZERS



Small | D1, D1 Mulcher, D2, D3

- Net Power: 80 hp – 104 hp
- Operating Weights: 17,855 lb – 20,640 lb
- Next Gen small dozers provide improved visibility, grade control and fuel economy to enhance productivity and overall cost savings. Added fuel savings with Eco Mode.
- Steer Assist for Dozers automatically maintains straight travel with light or heavy loads on flat ground and side slopes.
- Steer Assist 3D enables machines to automatically follow guidance lines from site design plans (in-field designs) under light or heavy loads.
- Stable Blade Lift and Tilt feature complements operator blade control input, reducing fatigue while increasing productivity in finish-grading applications.
- Traction Control with Low Slip mode reduces track slip and undercarriage wear.
- Utilizing Cat® VisionLink in combination with Cat Detect provides an added layer of machine safety.
- AutoCarry™ raises and lowers the blade to maximize pushing capability and prevent excessive track slip pushing heavy loads. Not available indoors or where no GPS signal.
- Scalable 2D and 3D Cat Grade is an optional feature that makes your jobs faster with less operator input and less rework by maintaining blade angles for better surface quality.

Medium | D4, D5, D6, D6 XE, D7, D8

- Net Power: 130 hp – 354 hp
- Operating Weights: 29,258 lb – 87,600 lb
- Revolutionary D6 XE is world's first High Drive, Electric Drive Dozer, delivering constant power to the ground, greater agility and fast cycle times.
- D6 XE is more fuel efficient and more productive.
- Standard machine features include 10 inch color LCD touch screen display with rear camera, Assist with ARO including Slope Indicate, Blade Load Monitor, Stable Blade, Slope Assist, Steer Assist, Traction Control and Auto Carry. Cat GRADE with 3D and Steer Assist 3D are optional, further increasing productivity, accuracy and ease of use.
- Full Cat Grade 3D from factory and Grade Ready options allow for jobsite flexibility to tackle today's requirements and tomorrow's challenges.
- Waste handling configurations available from the factory for D5 to D8.

Large | D9

- Net Power: 452 hp
- Operating Weights: 110,225 lb
- Optional GRADE with 3D is factory integrated to optimize blade loads.

D1
D1 MULCHER
D2
D3
D4
D5
D6
D6 XE
D7
D8
D9





HYDRAULIC EXCAVATORS

Mini | 300.9D, 301.5, 301.7 CR, 301.8, 302 CR, 302.7 CR, 303 CR, 303.5 CR, 304, 305 CR, 306 CR, 307.5, 308 CR, 308 CR VAB, 309 CR, 309 CR VAB, 310

- Net Power: 13 hp – 69.5 hp
- Operating Weights: 2,061 lb – 23,002 lb
- Quiet, spacious cabs and smooth ergonomic controls keep operators comfortable, increasing productivity and reducing fatigue.
- All Next Gen mini excavators provide improved fuel efficiency, longer maintenance intervals and easy-to-access routine check points that reduce operating costs.
- Cat® Grade technologies boost operator efficiency and improve jobsite productivity.
- Technology options Ease of Use and Cat Grade, on select models, simplify machine operation and enhance productivity for both experienced and novice operators.
- Higher digging forces, faster cycle times and enhanced uphill swing torque improve performance and efficiency.
- A comprehensive range of Cat® attachments optimizes performance for any task.

Small/Medium/Large | 313, 313 GC, 315, 315 GC, 317, 317 GC, 320, 320 GC, 323, 325, 326, 330, 330 GC, 335, 336, 340, 350, 352

- Net Power: 73 hp – 443 hp
- Operating Weights: 30,400 lb – 113,500 lb
- All models feature:
 - Large, ergonomic, comfortable cab.
 - Fuel saving features, longer maintenance intervals, and simplified service points that reduce operating costs.
 - A full range of Cat® work tools optimizes performance.
- Grade, Payload, and E-Fence technologies (standard on most models) boost operator efficiency and improve jobsite productivity.
- GC models provide job-matched performance and reliability at low-cost-per-hour.
- Compact radius models are ideal choices for working confidently in space-restricted areas such as road jobs with lane closures and next to buildings.

300.9D	313
301.5	313 GC
301.7 CR	315
301.8	315 GC
302 CR	317
302.7 CR	317 GC
303 CR	320
303.5 CR	320 GC
304	323
305 CR	325
306 CR	326
307.5	330
308 CR	330 GC
308 CR VAB	335
309 CR	336
309 CR VAB	340
310	350
	352



M314 M319
M315 M320
M316 M322
M318

WHEELED EXCAVATORS & MATERIAL HANDLERS

Wheeled Excavators | M314, M315, M316, M318, M319, M320, M322

- Net Power: 134 hp – 174 hp
- Operating Weights: 39,683 lb – 52,911 lb
- Next Gen lineup provides increased efficiency, improved operator comfort, with lower operating and maintenance costs.
- The versatility and mobility of Wheeled Excavators enable you to complete more jobs, in less time, with fewer machines.
- Wheeled Excavators can move quickly from job to job eliminating the cost of transporting equipment.

Best-in-class cab provides enhanced visibility. Machines are equipped with rear camera that displays on monitor inside cab.

- Multiple auxiliary hydraulic options enable use of a wide range of attachments.

Material Handlers | MH3022, MH3024, MH3026, MH3032, MH3040, MH3050

- Net Power: 145 hp – 346 hp
- Operating Weights: 54,000 lb – 110,250 lb
- MH3040 reduces fuel and maintenance costs.
- The MH3022 is an agile solution for jobs with space constraints, providing the necessary reach for tasks such as indoor sorting and waste handling.
- The MH3024 features optimum reach with its long MH front linkage and a choice of undercarriage configurations to complete jobs like waste handling, recycling and bulk material handling.
- The MH3026 is the best choice if work requires greater lifting capacities and a larger working envelope.
- All models feature continuous top- and side-plate boom and stick construction for greater durability.

MH3022
MH3024
MH3026
MH3032
MH3040
MH3050





BACKHOE LOADERS

Cat® Backhoe Loaders help you complete more work in less time on your jobsites, with front loader arms that provide improved reach and excavator-style booms that deliver superior digging power. These machines are also extremely versatile with a variety of attachments, so you can go from moving material and digging trenches to breaking up soil or hard surfaces quickly. Cat Backhoe Loaders are reliable performers that reduce your machine operating costs.

- Net Power: 69 hp – 131 hp
- Digging Depths: 14 ft – 21.1 ft
- Operating Weights: 17,637 lb – 29,321 lb
- 420 XE delivers exceptional performance, increased fuel economy, superior hydraulic system, maximum versatility and updated operator station.
- Powerful, load-sensing hydraulic systems provide excellent response for improved hoe and loader productivity and greater bucket breakout force.
- Spacious operator station with fingertip controls and multiple adjustments keep the operator comfortable and productive.
- Selectable Power Management Modes not only save fuel, but maintain machine performance.
- Industry-leading versatility with an integrated toolcarrier provides a hydraulic coupler and increased loader performance compared to single-tilt-cylinder loaders, as well as parallel lift.
- Air-suspension seat and ergonomic controls provide a comfortable working environment.
- Travel speeds up to 25 mph enable faster roading between jobsites.
- Side shift functionality for digging close to walls and in compact areas (models 428, 432 & 434).

415 IL	430
416	432
420	434
420 XE	440
428	450





239D3	275 XE
249D3	285
255	285 XE
265	
275	

COMPACT TRACK & SKID STEER LOADERS

Compact Track Loaders | 239D3, 249D3, 255, 265, 275, 275 XE, 285, 285 XE

- Gross Power: 67.1 hp – 134.1 hp
- Rated Operating Capacities: 1,530 lb - 4,520 lb @ 35% Tipping Load
- The 275 and 275 XE CTLs have a lift height of 134.4 in, 8 in higher than the 299D3, plus increases of 37% in tilt breakout and 19% increase in ROC.
- Expanding the Cat SSL and CTL line into the biggest size class, the 285 and the 285 XE have a 146 in lift height and 13,920 lb tilt breakout.
- The four next generation CTL models feature a new E-bar (equalizer bar) undercarriage provide increased stability.
- Provides the benefits of a rigid-style undercarriage design
- Next generation loaders are equipped with either a 5-inch standard LCD monitor or an 8-inch advanced touchscreen monitor.

More Power & Performance

- Increased lift height, tilt and lift breakout forces, and rated operating capacities compared to the D3 series
- Significant torque increases result in improved working performance
- New cab design provides more usable space for operator comfort, plus improved visibility.

Skid Steer Loaders | 226D3, 232D3, 236D3, 250, 260, 270, 270 XE

- Gross Power: 67.1 hp – 134 hp
- Rated Operating Capacities: 1,550 lb – 4,015 lb
- The new engines maintain horsepower across a wider RPM range compared to the D3 series engines with significant torque increases.
- The Cat 250 features a lift height of 124 in, 3 in more than the 242D3, a 36% increase in tilt and 26% increase in lift breakout forces, and 21% increase in ROC.
- With 6.4 in more lift height than the 272D3, the 270 and 270 XE deliver a maximum lift height of 133.5 in plus 11% and 5% increases in tilt and lift breakout forces, respectively.
- New closed-center auxiliary hydraulic system enables these machines to operate all Cat Smart Attachments with the standard hydraulics provided. Standard hydraulic system pressure increases 5% to 3,500 psi in the next generation models.

226D3	260
232D3	270
236D3	270 XE
250	





WHEEL LOADERS

Compact | 903, 906, 907, 908, 910, 914, 920

- Net Power: 48 hp – 121 hp
- Operating Weights: 9,200 lb – 21,742 lb
- A Cat® C3.6 engine powers the 910, 914 and 920 for greater hp, improved fuel efficiency.
- Strong breakout force and dependable performance are built in for fast cycle times.
- Superior reach and excellent visibility enable easy, efficient material placement.
- Spacious cabs with joystick controls keep operators comfortable all shift long.
- Optional Ride-Control system provides a more comfortable ride and better material retention over rough terrain.
- Skid steer loader-style coupler on the 903, 906, 907 and 908 enables use of Cat Skid Steer Loader attachments for increased versatility.
- Tackle more jobs with one machine using the extensive line of Cat attachments.

Small/Medium | 926, 930, 938, 950, 950 GC, 962, 966, 966 GC, 966 XE

- Net Power: 170 hp – 321 hp
- Operating Weights: 29,972 lb – 51,124 lb
- A smooth, hydrostatic transmission automatically adjusts power to the ground.
- Large, spacious cabs feature excellent visibility, extremely low sound levels, automatic temperature control and ergonomic seat-mounted joystick controls.
- Predictable hydraulic systems sense demand and adjust flow and pressure to match.
- Optimized, parallel-lift, Z-bar loader linkage combines powerful digging ability with toolcarrier capabilities for increased performance and versatility.
- A new line of optimized Performance Series Buckets and other attachments is available in Pin-On or Fusion™ Coupler interfaces.
- The 966 GC provides performance combined with low owning and operating costs making it the perfect choice for your agency.

Medium/Large | 972, 972 XE, 980, 980 XE, 982, 982 XE, 986, 988, 988 XE

- Net Power: 339 hp – 538 hp
- Operating Weights: 54,858 lb – 116,362 lb
- New features of the 988 include slope indication on info display, 1000 Engine Oil and Fuel Filter Service, improved cab visibility, and delayed Engine Shutdown time reduction.
- XE models deliver lower maintenance costs and better fuel efficiency.

903	962
906	966 GC
907	966
908	966 XE
910	972 XE
914	980
920	980 XE
926	982
930	982 XE
938	986
950	988
950 GC	988 XE



816
826
836

LANDFILL COMPACTORS & TRACK LOADERS

Landfill Compactors | 816, 826, 836

- Net Power: 249 hp – 496 hp
- Operating Weights: 57,345 lb – 123,319 lb
- Comprehensive guarding includes the Cat® Axle Guard system, which protects final drives and wheel rims.
- Cat wheels and tips maximize performance and compaction. Choose from paddle tips, plus tips, combination tips or diamond tips.
- A variety of blades—Straight, Semi U, and U—helps meet diverse trash-spreading and cover-material-spreading requirements.

953
963
973

Track Loaders | 953, 963, 973

- Net Power: 160 hp – 275 hp
- Operating Weights: 34,594 lb – 63,900 lb
- Increased horsepower enables excellent maneuverability, powerful excavating and efficient truck loading.
- Redesigned, ergonomic cabs provide greater operator comfort.
- Purpose-built waste handling packages available for the 953 and 963.
- Ideal for working in the toughest underfoot conditions on demanding waste-handling, construction and demolition applications.





SCRAPERS & ARTICULATED TRUCKS

621	725
623	730
627	730 EJ
631	735
637	740 GC
651	740 EJ
657	745

Scrapers | 621, 623, 627, 631, 637, 651, 657

- 407 hp – 629 hp for tractors (+290 hp for rear engine on tandem models)
- Scraper Capacities: 24 – 44 yd³ (heaped)
- Less steering effort required with the new high-pressure steering system.
- Reduce up to 14 individual operator commands per cycle using optional Sequence Assist technology.
- Move more material with Advanced Productivity Electronic Control System (APECS), which provides better utilization of engine power and torque.

Articulated Trucks | 725, 730, 730 EJ, 735, 740 GC, 740 EJ, 745

- Net Power: 342 hp – 496 hp
- Rated Payloads: 26.5 tons – 45.2 tons
- Articulated trucks are well-suited for placing cover material. The 730 EJ and 740 EJ feature ejector bodies, which are safer and provide clean load ejection on-the-go.
- All models feature a completely re-engineered cab for improved comfort and ease of operation. This includes Assisted Hoist Control and Cat Detect with Stability Assist system. The quieter cab design reduces inside sound levels by 7dB.





TELEHANDLERS

Telehandlers | TH0642, TH0842, TH1055, TH1255

Superior design and advanced features combine to give the next generation Telehandlers the best all-around visibility, plus lift and reach capabilities. The TH0642, TH0842, TH1055 and TH1255 models have three operator station options: open canopy, enclosed cab with heat, and enclosed cab with heat and A/C.

- Gross Power: 74 hp – 115 hp
- Load Capacities: 6,000 lb – 12,000 lb
- Max Lift Height: 42.1 ft – 54.6 ft
- Redesigned interior features an ergonomic control layout, standard tilt steering column, and a new full color LCD monitor that provides machine information.
- The monitor also shows the standard rearview camera feed when in reverse, and depressing the camera soft key enables continuous viewing of the camera image.
- A standard operator-presence seat switch prevents operation when the operator is not seated.
- An optional Load Stability Indication (LSI) system provides visual and audible alerts regarding forward load handling stability.
- The pilot-controlled joystick ensures smooth multi-function performance and feel of the boom extend/retract and lift/lower.
- Choice of coupler interface: the IT or Standard TH.
- Standard auxiliary hydraulics support hydraulically powered Cat attachments.
- Monitor features a standard multi-operator code security system, supporting up to 50 operator codes to protect against machine theft and unauthorized use at the jobsite.

TH0642
TH0842

TH1055
TH1255



STRETCH YOUR BUDGET DOLLARS

Agency fleet efficiency is improved by pairing the right attachments with each of the machines in your fleet. Attachments enable one machine to perform the work of many specialty machines, thereby stretching your equipment capabilities without stretching your available budget.

Cat® Attachments Include:

- › Augers
- › Backhoes
- › Bale Handlers
- › Blades
- › Brooms
- › Brushcutters
- › Buckets
- › Cold Planers
- › Compactors
- › Couplers
- › Cutters
- › Forks
- › Grapples
- › Grapple Rakes
- › Hammers
- › Landscape Rakes
- › Material Handling Arms
- › Mixing Buckets
- › Mulchers
- › Multi Processors
- › Plows
- › Power Box Rakes
- › Pulverizers
- › Rakes
- › Rippers
- › Scarifiers
- › Shears
- › Side Discharge Buckets
- › Snow Blowers
- › Snow Plows
- › Snow Pushes
- › Bucket Thumbs
- › Tillers
- › Tilt Rotator System (TRS)
- › Trenchers
- › Truss Booms
- › Vibratory Plate Compactors
- › Wheel Saws

Consult with our experts to learn more about your best versatility and production-boosting attachments.



Brushcutters



Compactors



Snow Pushes

Smart Attachments

Smart Dozer Blade

Available for Cat D3 Series Compact Track Loaders and the 250, 255, 260, 265, 270 and 275 Next Generation machines, operators can cut, move, fill and grade any material. The blade features a curved moldboard that keeps material rolling and a trapezoidal design with angled end bits that enable operators to flush-cut against vertical surfaces when the blade is fully tilted. The D3 Series host machine recognizes the attachment and unlocks special display screens, enabling the operator to select how the blade is controlled. The standard joystick control functions can be modified to match specific application needs. The ASSIST feature's memory enables operators to recall previously used settings at the touch of a joystick button.



Smart Grader Blade

The Cat GB120 and GB124 are available for D3 Series and the 255, 260 and 265 machines, which recognize the host machine and unlocks special display screens that provide options for attachment control, enabling joysticks to be repurposed to activate attachment functions. The right joystick operates blade tilt, angle and lift. The ASSIST feature enables selection of the Cross Slope Left or Right patterns, independent of the machine's operating angle. As the blade is angled and geometry changes, the Smart attachment even calculates and maintains the cross-slope setting.



Smart Backhoe

The Cat BH130 significantly increases versatility, enabling it to be used in a wider range of tasks, including utility trenching, digging footings, and forming/maintaining drainage ditches. The backhoe is also compatible with Cat 3-ton excavator attachments, and its auxiliary-hydraulic system enables pairing with hydro-mechanical work tools, including hammers, bucket thumbs, augers, and vibratory compactors. The backhoe hydraulically shifts side-to-side, enabling digging adjacent to buildings and footings, and integrated stabilizers provide a solid digging platform.



Tilt Rotator System (TRS)



Tillers



Multi Purpose Buckets



Couplers



Grapple Rakes



Mulchers



Material Handling Arms



Vibratory Plate Compactors



Snow Blowers



Augers



Scarifiers



Hammers



Landscape Rakes



Performance Hammers



Flail Mower



Brooms



Power Box Rakes



Trenchers



Cold Planers



GOVERNMENTAL FINANCING

SOLUTIONS FROM CAT FINANCIAL

Your world is busy enough—the last thing you need is the hassle of acquiring equipment financing.

With flexible terms—up to 100 percent financing, non-appropriations clauses and insurance bonding through Cat® Insurance—Cat Financial is set up to meet the specific needs of governmental entities. Whether you're buying equipment, protecting your investment, managing your accounts or preparing for the future, comprehensive financing and insurance solutions can help you be more successful.

Cat Financial Services provides financing for all types of state and local governments—counties, cities and townships, public authorities, special district, school districts, state universities, community colleges and constituted authorities. Financing is also available for entities such as religious, educational and charitable (501(C)(3) organizations, as well as private corporations that are non-profits acting on behalf of a governmental entity as described in Revenue Ruling 63-20. Federally recognized Native American tribes are eligible for governmental lease programs.

Governmental Lease

Governmental leases enable you to take advantage of special low interest rates. Because the income received is tax exempt, Cat Financial passes the savings on to you. In fact, the interest charge you pay is normally less than the total cost of issuing a bond.

You may not need voter approval as with bond issuances, and 100 percent financing is available to qualified entities. Plus,

you can cancel your contract without penalty on the last day of the appropriations period if funding is not approved for the following year.

Operating Lease

An operating lease is for the customer who desires the lowest possible payments and has the option to return, renew or purchase the equipment at a predetermined price.

The purchase option is based on the machine specifications, equipment usage, application and finance term. At the end of the lease, you may purchase the equipment at a predetermined price, renew the lease or return the machine.,

Supporting your needs

Whatever your equipment needs, our dealership will work with you and Cat Financial will deliver a financing solution that's best for you. A payment plan will be arranged to meet your needs—whether it's annual, semi-annual, quarterly or monthly.

The entire process is fast and easy. All you do is select your machine and work tools that best meet your needs. In most cases, Cat Financial will approve your transaction and issue documents the same day.

Then you can use Cat AccountExpress for online access to your account information. It's all part of our total solution to your governmental financing needs.

For more information about governmental financing and eligibility, call our dealership, or Cat Financial at 1.866.263.3791. 📞

RENTAL **SUCCESS** STARTS HERE

WORK MORE EFFICIENTLY, MORE PRODUCTIVELY

When you need additional equipment or specialized machines and work tool attachments to complete your work on time and within budget, you'll find everything you need, plus helpful application assistance at The Cat Rental Store. One call connects you to the very best, late-model, well-maintained, application-matched equipment.

If you can't find a specific product or model you're looking for, just ask. We'll tap into our vast rental inventory at multiple locations to quickly locate exactly what you need. Our robust selection of machine attachments expands the capabilities of our rental fleet and your own machines. With the right work tool, a single piece of rental equipment can accomplish multiple tasks, maximizing your ROI and keeping your jobsite lean and uncluttered.

To be your one-stop source for everything you and your crew need, The Cat Rental Store partners with more than 70 equipment manufacturers. Whether you're boosting your capabilities for your busy season or locating equipment to plan a seamless special event, you can trust us for everything from power generation equipment to site support resources.

As part of your evaluation process, renting is also an excellent way to test a machine before buying.

Just call us and our friendly rental team will help you find the machine and work tool attachments you need to complete your work faster and more profitably or go to catrentalstore.com. 📞



WHEN SHOULD YOU BUY USED?

FIND OUT BY ANSWERING THESE QUESTIONS

If you have an occasional need for a piece of equipment throughout your fiscal year, but don't have the budget to buy new or don't wish to overutilize your rental budget, purchasing a Cat® Certified Used machine may provide the perfect solution. Answers to the following questions will provide guidance for your decision-making process:

1. ***Does your anticipated annual hour utilization justify the cost of new?***
2. ***Do you need the latest technology features for your planned application?***
3. ***Can you save money compared to hiring someone as needed to do the work?***
4. ***Does the cost of buying a used machine make more long-term sense fiscally?***
5. ***Does the anticipated trade-in or resale value support buying used?***



You can choose from Certified Used Equipment that is selected, inspected and serviced to higher standards. Even on rough terrain or in harsh applications, these machines will provide years of service as long as they're well maintained and operated responsibly. We also have older or high-hour machines that will handle your less strenuous application needs for a shorter period of time. You have immediate access to hundreds of used machines in our own inventory and that of neighboring Cat dealers.

CatUsed.com is exclusive to Cat dealers. Search results include photos, conditions, and geographic location of each product. Go to CatUsed.com now and know what you're getting. 📱



EXTEND HYDRAULIC EXCAVATOR LIFE

REBUILD WITH SUPERIOR PARTS, SERVICE & EXPERIENCE

Every Cat® hydraulic excavator was originally built to be rebuilt. Maximizing your investment is easy. An excavator life extension restores components to original performance levels with economical rebuild and repair options.

A life-extension solution maximizes your initial investment, and usually occurs when your machine has accumulated a substantial number of operating hours. Consider early indicators such as service history, Cat S•O•SSM fluid sampling, fuel consumption and performance loss.

First, our experienced rebuild technicians will perform a complete hydraulic inspection, including S•O•S oil samples from the hydraulic circuits, as well as conducting a hydraulic performance test. Based on inspection results, you'll be advised regarding a range of economical solutions that can be customized to meet your machine's rebuild and repair needs, as well as your budget.

If desired, your life-extension solution can include individual certified rebuild components including the engine, cooling system, main hydraulic pump and the final drives. When opting for certified rebuilt components,

you'll benefit from any engineering updates.

If your excavator needs a replacement engine and hydraulic pump, you'll need to replace the output hydraulic lines from the main hydraulic pump to the valve block, ensuring hydraulic system cleanliness meets ISO specifications.

As advised by our dealer rebuild team, all other machine components will be inspected for reuse, including hydraulic cylinders, motors, accumulators, lines and hoses, plus the swing drive, final drives and more. You can even add optional upgrades to enhance your machine's performance, productivity, technology, comfort and convenience.

During final assembly, your excavator will undergo rigorous pressure checks and performance testing. Also, be sure to ask our staff about Equipment Protection Plans, Customer Value Agreements and a range of financing options from Cat Financial.

Contact our dealership to learn more about hydraulic excavator life-extending rebuild solutions. ®



DETECT & ASSIST TECHNOLOGY

IMPROVE SAFETY. PREVENT ACCIDENTS. REDUCE COSTS.



CAT® DETECT safety technology helps operators become more aware of their surroundings and automatically prevents them from engaging in certain unsafe operations. Proximity sensing systems limit machine movement in tight spaces, while cameras and other sensors keep operators informed about personnel and equipment working near their machines.

Object detection provides the following benefits:

- Gives the operator a complete picture of other machines, hazardous conditions and personnel around the machine.
- Works with equipment from any manufacturer, so you can use one system across your entire fleet.
- Can be configured to reduce triggering alarms and distractions in common situations and at specified speeds and distances.
- Protects people and assets during the most accident-prone phases of operation.
- Alerts operators to diminished closing distances as machine moves closer to objects.
- Detects a wide range of hazards without the need for tagging.
- Controls costs by reducing accidents, machine damage and lost-time injuries.

CAT ASSIST helps operators of all experience levels dig, load and grade with more confidence, speed and accuracy.

Assist for motor graders provides more comfort, requires less effort and reduces material waste and cost. Motor graders are one of the hardest pieces of equipment to master, and one of the hardest to find skilled operators for. Cat Grade and Assist technology can make work easier for operators of all experience levels.

Assist for excavators automates bucket and boom movements for more precise cuts with less effort. Easy-to-use controls facilitate quick depth and slope adjustments, while the in-cab display provides a visual representation of the grading progress.

Assist for wheel loaders provides semi-autonomous functionality to help optimize loading and hit exact targets safely. Features like Auto Set Tires and Auto Dig can help increase the efficiency of new and experienced operators.

Cat Assist for dozers—now standard on Cat® D4, D5, D6, D6 XE and D7 Dozers, ensures that these models come equipped with Assist features that can be easily upgraded to Cat Grade 3D, including:

- **Stable Blade:** Complements the operator's blade-control inputs to help reduce small imperfections. Stable Blade works in the background to reduce the number of passes needed to achieve specified grades.
- **Traction Control:** Helps the operator more easily acquire a blade load by automatically limiting track slip and minimizing undercarriage wear.
- **Auto Carry:** Automatically adjusts blade height to maintain a fully loaded blade for the entire length of the push.
- **Blade Load Monitor:** Enables operators to compare each blade load to machine capacity. Works in tandem with Auto Carry to boost operator accuracy and productivity.
- **Slope Assist™:** Holds blade angles with no GPS. The system maintains blade cross slope and/or mainfall for better surface quality and elimination of rework.
- **Steer Assist:** Automatically maintains straight travel with light or heavy loads on flat ground and side slopes. Reduces dozer operator inputs by up to 75%.

Contact our dealership to learn how Cat Detect and Assist technologies can enhance the safety of your operation. 5



THE CAT[®] PERFORMANCE CVA FOR THE MACHINE YOU OWN

A WHOLE NEW LEVEL OF
PROTECTION AND CONVENIENCE
FOR THE EQUIPMENT YOU TRUST

Dealer participation may vary.

