

CAT® AD63 UNDERGROUND TRUCK



SAFETY FEATURES

Caterpillar continues to be proactive in developing new features that help you ensure the safety of everyone working in, on or around the machine. The AD63 is designed with safety in mind — from excellent visibility to improved access and egress, industry-leading braking and retarding to a secondary engine shutoff switch.

Anti-skid upper
deck surfaces

New and
improved upper
deck handrails

Exhaust heat
shielding and
firewall

Ground level
compartment
sight glasses

Ansul Liquid
Vehicle System
(LVS) available
from factory

Integral ROPS/FOPS Cab

Operator Present System

Push-out safety glass

Suspension seat

Forward passenger / training seat

Inertia reel retractable belts

Steering frame lock

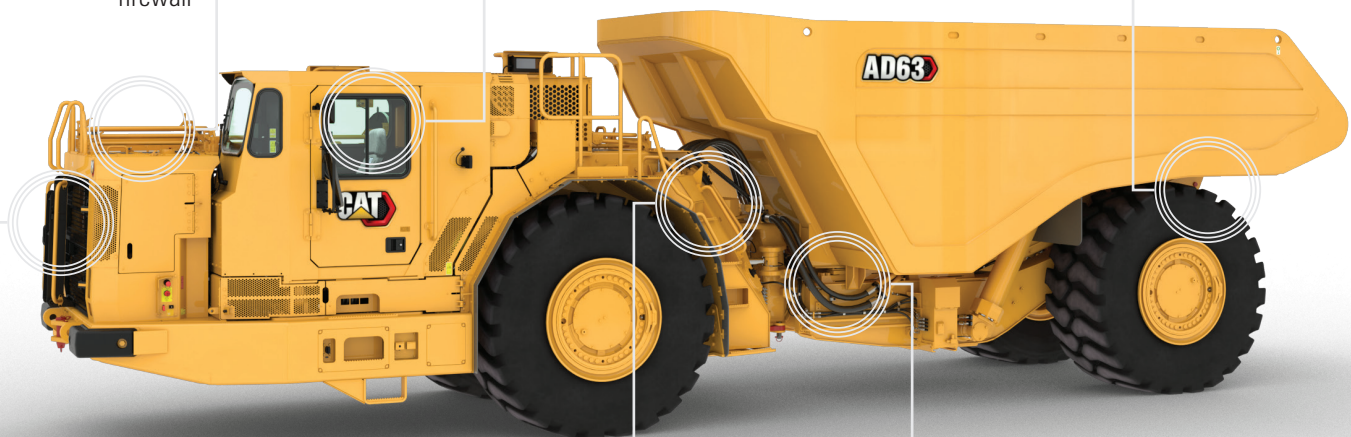
Dual zipper window seal

Alternate exit via windows

Optional dual panel window

Body retaining pins

Optional rear
vision camera



Additional access via the front grill

Secondary engine shutoff switch
located at ground level

3-point cabin
and machine
access

Hitch hydraulic hoses
fitted with burst
protection sleeves