

323 GX

HYDRAULIC EXCAVATOR



Cat® C4.4 Engine Power ISO 14396 129.4 kW (174 hp)

Cat® C7.1 Engine Power ISO 14396 118 kW (158 hp)

Operating Weight 21 400 kg (47,200 lb)

Cat C4.4 and C7.1 engines emit equivalent to U.S. EPA Tier 3 and EU Stage IIIA.



CAT[®] 323 GX

FEATURES FOR FAST PAYBACK¹

The 323 GX Hydraulic Excavator – our economy model with all the reliability and ease of operation you expect from a Cat[®] excavator, with easy maintenance and lower cost features designed to give you a faster return on your equipment investment.



CAT[®] EXCAVATORS

Cat excavators offer you more choices than ever for your business.

- + MORE MODEL OPTIONS
- + MORE FUEL EFFICIENCY
- + MORE PRICE POINTS

Ready to help you make your business stronger, Cat excavators give you new ways to get the most work done at the lowest cost so you can put more money in your pocket.

¹ Payback period may vary depending on purchase price, interest rates, down payment, fuel consumption, maintenance costs, local rental rates, and other factors as applicable. Talk to your local Cat dealer about estimated payback period.

EASY TO

OPERATE AND MAINTAIN



Trust the Caterpillar time-proven engineering and manufacturing know-how for easy operation and excellent reliability.

- + Stable and responsive design increases jobsite efficiency.
- + Boom, stick, and bucket linkages are built to withstand typical 23-ton work demand, so you can be confident working in a wide variety of applications.
- + Automatic hydraulic oil warm up makes work more efficient and helps prevent premature wear of components so you get longer service life.
- + Cat undercarriage comes with track pins and bushings grease sealed to enhance performance and service life.
- + The latest 323 GX can be equipped with a long undercarriage* offering enhanced stability, especially when hammering on inclines or uneven terrain.

*Only available with the optional Cat C7.1 6-cylinder engine.





Better filters with extended maintenance intervals mean you will do more work with less downtime and lower cost. In fact, the 323 GX has maintenance-free batteries and a hydraulic oil system that requires no maintenance for 3,000 hours. When you do have to perform maintenance, filters and drains are grouped together to make it quick and easy.

MAKE MANAGING ASSETS EASIER

VisionLink® provides actionable data insights for all assets – regardless of fleet size or equipment manufacturer.* Review equipment data from your desktop or mobile device to maximize uptime and optimize assets. Dashboards provide information such as hours, miles, location, idle time, and fuel utilization. Make informed decisions that lower costs, simplify maintenance, and improve safety and security on your jobsite.

*Data field availability can vary by equipment manufacturer.

MAINTENANCE INTERVAL IMPROVEMENTS	323 GX	D2 SERIES
	Hours	Hours
Replace Hydraulic Oil Case Drain Filter	No filter needed	Initial 250 + Every 1,000
Replace Hydraulic Oil Pilot Filter	No filter needed	Initial 250 + Every 1,000
Replace Hydraulic Oil Return Filter	Every 3,000	Initial 250 + Every 2,000
Change Swing Drive Oil	Initial 500 + Every 1,000	Initial 250 + Every 1,000
Replace Fuel Filters	Every 1,000	Every 500
Clean Fuel Tank Strainer	When needed	Every 500
Replace Fuel Tank Cap Filter	Every 2,000	Every 1,000
Change Engine Oil	Every 1,000*	Every 1,000

*Requires Scheduled Oil Sampling (S-O-SSM). See Owning & Operating Manual.

FAST PAYBACK

Help make your business stronger with the Cat 323 GX, featuring easy operation and maintenance, plus productivity balanced with low costs for fast payback.



LOW OWNING COSTS

The 323 GX features simplified options for reduced acquisition costs to help you get the most work done at a lower cost. Everything about the 323 GX, like its robust structures, access to components, and widely available parts, is designed to put more money in your pocket.

LOW FUEL CONSUMPTION

Synchronized engine and electrohydraulic systems lower fuel consumption. Smart mode helps you further reduce fuel costs by automatically adapting engine speed for your specific application.

POWER MODES THAT PAYBACK

Power mode is the traditional setting where you can manually dial engine speed up or down based on your work. Smart mode automatically adapts engine speed for you – up for high productivity and down for lighter loading, resulting in higher operating efficiency.

LATEST FEATURES



WORK SMART. SAVE MONEY.

- + The optional Cat® C4.4 engine and electrohydraulic system work together to help you move plenty of material while using less fuel.
- + The optional Cat C7.1 6-cylinder engine offers another robust and durable engine solution that strikes a balance between performance, affordability, reliability, and ease of maintenance.
- + The optional Super Long Reach* extends the machine's reach and working capacity, making it highly effective for irrigation development, waterway maintenance, and prawn farming.
- + The optional Heavy Duty (HD) boom and stick* are designed to withstand extreme conditions and endure the stresses and forces generated during continuous high-impact hammering or other demanding operations.

*Only available with the optional Cat C7.1 6-cylinder engine.



BUILT-IN SAFETY

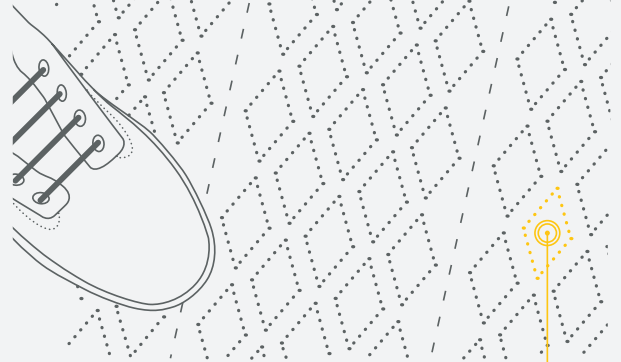
LOOK OUT FOR YOUR PEOPLE AND YOUR EQUIPMENT

- + Smooth handrails and anti-skid steps make getting on and off the machine more secure.
- + Daily maintenance checks can be performed with most points accessible from ground level, making the maintenance faster, easier, and safer.
- + The storage box lid is lockable to protect your gear.
- + The cab's wide field of view and available rearview camera enhance jobsite visibility.
- + An optional ISO certified rollover protective structure (ROPS) cab is available in some regions to help reduce the risk of injury in the event of a rollover.

1,000 WAYS TO STAY SAFE.

FACT:

SLIPPING IS ONE OF THE
BIGGEST CONTRIBUTORS
TO WORKPLACE INJURIES.*



OUR ANTI-SKID PLATES FEATURE

1,000+ INDIVIDUAL PERFORATIONS
FOR BETTER TRACTION

*SOURCE: [HTTPS://WWW.OSHA.GOV/DTE/GRANT_MATERIALS/FY07/SH-16625-07/SLIPSTRIPSFALLS.PPT](https://www.osha.gov/dte/grant_materials/fy07/SH-16625-07/SLIPSTRIPSFALLS.PPT)



CAB TAKES THE HARD OUT OF WORK

Comfort and movement efficiency help keep operators productive and alert all shift long. The standard seat is wide and adjustable to suit individual operator preferences. The controls, including push-button start, are simple to use and easy to reach, allowing you to operate comfortably with minimal twists and turns.



SMART DESIGN

Operator ID remembers your preferred settings for power mode, joystick pattern, and joystick response. Just plug in your password and go to work. Seat adjustments, touchscreen monitor, and controls are conveniently located to reduce reaching and twisting.

ALL-ROUND VISIBILITY

Large windows at the front, sides, and rear give excellent visibility in all directions from the operator seat. The cab structure uses narrow front cab pillars to allow a wider field of view to the front. A rearview camera is an available option.

ACCESS, CONNECTIVITY, AND STORAGE

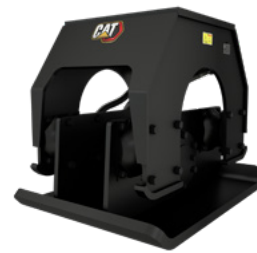
The AM/FM radio includes Bluetooth® technology, USB, and auxiliary ports for connecting and charging devices; a 24V DC outlet makes phone charging even faster. Storage space in front of the controls can hold a large cup and wide cell phone. Storage behind the seat can hold a large lunchbox and other items.



BUCKETS



**HYDRAULIC
HAMMERS**



**VIBRATORY
PLATES**

INCREASE YOUR PRODUCTIVITY AND PROFIT WITH CAT ATTACHMENTS

You can easily expand the performance of your machine by using Cat attachments. Each Cat attachment is designed to fit the weight and horsepower of the Cat excavator for improved performance, safety, and stability.

When you buy Cat equipment, you're getting so much more than the machine. You're also getting the support of a world-class dealer network backed by a range of flexible solutions, technology, tools, and more. It's all about support that's built around your success.

GET MORE THAN A MACHINE



- + Customer value agreements (CVA)
- + Cost-saving service and repair options
- + Quality parts and precision components
- + Financing solutions
- + Rental and used equipment

VALUE MADE EASY

A Cat customer value agreement (CVA) starts with hassle-free maintenance featuring genuine Cat parts right on schedule. Security of expert dealer support through an equipment protection plan (EPP) can be included to minimize surprise costs on covered repairs. Equipment health management provides you with machine alerts and information, as well as inspections and fluid health monitoring to give you more peace of mind. Hassle-free ownership simply means all elements of your CVA are part of one agreement that can be included in your monthly machine payment.

TECHNICAL SPECIFICATIONS

See cat.com for complete specifications.

ENGINE OPTIONS		
Engine Model	Cat® C4.4	
Engine Power – ISO 14396	129.4 kW	174 hp
Net Power – ISO 9249	123.7 kW	166 hp
Bore	105 mm	4 in
Stroke	127 mm	5 in
Displacement	4.4 L	269 in³
Biodiesel capability	Up to B20	
<ul style="list-style-type: none">• Cat C4.4 engine emits equivalent to U.S. EPA Tier 3 and EU Stage IIIA.• Advertised power is tested per the specified standard in effect at the time of manufacture.• Net power advertised is the power available at the flywheel when the engine is equipped with fan, air intake system, exhaust system and alternator.• Engine speed at 2,000 rpm.		
Engine Model	Cat® C7.1	
Engine Power – ISO 14396	118 kW	158 hp
Net Power – ISO 9249	111.3 kW	149 hp
Bore	105 mm	4 in
Stroke	135 mm	5 in
Displacement	7.01 L	428 in³
Biodiesel capability	Up to B20	
<ul style="list-style-type: none">• Cat C7.1 engine emits equivalent to U.S. EPA Tier 3 and EU Stage IIIA.• Advertised power is tested per the specified standard in effect at the time of manufacture.• Net power advertised is the power available at the flywheel when the engine is equipped with fan, air intake system, exhaust system and alternator.• Engine speed at 1,800 rpm.		

HYDRAULIC SYSTEM		
Main System – Maximum Flow – Implement	429 L/min (214.5 L/min × 2 pumps)	113 gal/min (56.7 gal/min × 2 pumps)
Maximum Pressure – Equipment – Normal	35 000 kPa	5,075 psi
Maximum Pressure – Travel	35 000 kPa	5,075 psi
Maximum Pressure – Swing	27 500 kPa	3,988 psi

SWING MECHANISM		
Swing Speed*	11.13 rpm	
Maximum Swing Torque	82 kN·m	60,333 lbf·ft
*For CE-marked machine default value may be set lower.		

WEIGHTS		
Operating Weight (Non-Rollover Protective Structure [non-ROPS])	21 400 kg	47,200 lb
Medium undercarriage, Reach boom, R2.9B1 (9'6") stick, General Duty (GD) 1.2 m³ (1.57 yd³) bucket, 600 mm (24") triple grouser shoes and 4250 kg (9,370 lb) counterweight.		
Operating Weight (ROPS)	21 600 kg	47,600 lb
Medium undercarriage, Reach boom, R2.9B1 (9'6") stick, GD 1.2 m³ (1.57 yd³) bucket, 600 mm (24") triple grouser shoes and 4250 kg (9,370 lb) counterweight.		

SERVICE REFILL CAPACITIES		
Fuel Tank	390 L	103 gal
Cooling System (C4.4 engine)	24.5 L	6.5 gal
Cooling System (C7.1 engine)	32.5 L	8.6 gal
Engine Oil (C4.4 engine)	15 L	4 gal
Engine Oil (C7.1 engine)	25 L	6.6 gal
Swing Drive	5.5 L	1.5 gal
Final Drive (each)	4.5 L	1.2 gal
Hydraulic System (including tank)	218 L	57.6 gal
Hydraulic Tank	115 L	30.4 gal

DIMENSIONS		
Boom	Reach 5.7 m (18'8")	
Stick	Reach R2.9 m B1 (9'6")	
Bucket	GD 1.20 m³ (1.57 yd³)	
Undercarriage	Medium	
Shipping Height (top of cab)	2980 mm	9'10"
Handrail Height	3030 mm	9'11"
Shipping Length	9520 mm	31'3"
Tail Swing Radius	2830 mm	9'3"
Counterweight Clearance	1050 mm	3'5"
Ground Clearance	470 mm	1'6"
Track Length	4250 mm	13'11"
Length to Center of Rollers	3450 mm	11'4"
Track Gauge	2380 mm	7'10"
Transport Width – 600 mm (24") shoes	2980 mm	9'9"
Transport Width – 790 mm (31") shoes	3170 mm	10'5"

WORKING RANGES AND FORCES		
Boom	Reach 5.7 m (18'8")	
Stick	Reach R2.9 m B1 (9'6")	
Bucket	GD 1.20 m³ (1.57 yd³)	
Undercarriage	Medium	
Maximum Digging Depth	6710 mm	22'
Maximum Reach at Ground Level	9860 mm	32'4"
Maximum Cutting Height	9470 mm	31'1"
Maximum Loading Height	6500 mm	21'4"
Minimum Loading Height	2180 mm	7'2"
Maximum Depth Cut for 2440 mm (8'0") Level Bottom	6020 mm	19'9"
Maximum Vertical Wall Digging Depth	5740 mm	18'10"
Minimum Working Equipment Radius	3650 mm	12'
Bucket Digging Force (ISO)	140 kN	31,428 lbf
Stick Digging Force (ISO)	107 kN	23,942 lbf

STANDARD & OPTIONAL EQUIPMENT

Standard and optional equipment may vary. Consult your Cat dealer for details.

BOOMS & STICKS	STANDARD	OPTIONAL
5.7 m (18'8") Reach boom		•
5.7 m (18'8") HD Reach boom		•
8.85 m (29") Super Long Reach boom		•
2.5 m (8'2") Reach stick		•
2.9 m (9'6") Reach stick		•
2.9 m (9'6") HD Reach stick		•
6.28 m (20'7") Super Long Reach stick		•
CAB	STANDARD	OPTIONAL
Sound suppressed with viscous mounts	•	
ROPS ¹		•
Operator Protective Guards (OPG)		•
High-resolution 203 mm (8") LCD touchscreen monitor	•	
Mechanically adjustable seat with headrest and armrest	•	
51 mm (2") orange seat belt	•	
Automatic bi-level air conditioner	•	
Keyless push-to-start engine control	•	
Fixed left-side console	•	
1-button joystick	•	
3-button joystick		•
Bluetooth® radio with USB/Auxiliary ports	•	
24V DC outlet	•	
Cup holder and storage compartments	•	
Rear window emergency exit	•	
70/30 tempered glass windshield	•	
Upper radial wiper with washer	•	
Openable steel hatch	•	
LED dome light	•	
Washable floor mat	•	
CAT TECHNOLOGIES	STANDARD	OPTIONAL
VisionLink®	•	
ELECTRICAL SYSTEM	STANDARD	OPTIONAL
950 CCA maintenance-free batteries (x2)	•	
Electrical disconnect switch	•	
LED chassis and cab lights	•	
LED left-side boom light	•	
LED right-side boom light		•
ENGINE	STANDARD	OPTIONAL
Cat C4.4 twin turbo diesel engine		•
Cat C7.1 single turbo diesel engine ²		•
Two selectable modes: Power, Smart	•	
Up to 4500 m (14,764 ft) altitude capability	•	
52°C (125°F) high-ambient cooling capability	•	
-25°C (-13°F) cold start capability	•	
Electric fuel priming pump	•	
Two-stage fuel filtration system	•	
Sealed double-element air filter with pre-cleaner	•	

HYDRAULIC SYSTEM	STANDARD	OPTIONAL
Electronic main control valve, hammer ready	•	
Back-to-back electronic pump	•	
Boom and stick regeneration circuits	•	
Automatic hydraulic oil warm up	•	
Automatic two-speed travel	•	
Hammer lines		•
Hammer return filter		•
High performance hydraulic return filter	•	
SAFETY AND SECURITY	STANDARD	OPTIONAL
Anti-skid plating with countersunk bolts	•	
Handrail and hand hold	•	
Lockable external tool/storage box	•	
Lockable disconnect switch	•	
Right-side-view mirror	•	
Right-hand edge mirror on cab		•
Rearview camera		•
Rear- and right-side-view cameras		• ³
Signaling/warning horn	•	
Hydraulic lockout lever	•	
Travel alarm		• ⁴
Swing alarm		•
SERVICE AND MAINTENANCE	STANDARD	OPTIONAL
Grouped location of filters	•	
Radiator screen		•
Scheduled Oil Sampling (S-O-S SM) ports	•	
UNDERCARRIAGE AND STRUCTURES	STANDARD	OPTIONAL
Medium undercarriage		•
Long undercarriage		•
600 mm (24") triple grouser track shoes		•
790 mm (31") triple grouser track shoes		•
800 mm (31") triple grouser track shoes		•
4250 kg (9,370 lb) counterweight		•
4700 kg (10,360 lb) counterweight		•
Grease lubricated track link	•	
Tie-down points	•	

¹Mandatory for Kingdom of Saudi Arabia.

²Optional Southeast Asia, Indonesia; standard Middle East.

³Mandatory in Kingdom of Saudi Arabia; not available in other regions.

⁴Standard in South America.

Not all features are available in all regions. Please check with your local Cat dealer for specific offering availability in your area.
For additional information, refer to the Technical Specifications brochures for the 323 GX available at www.cat.com or your Cat dealer.

For more complete information on Cat products, dealer services and industry solutions, visit us on the web at www.cat.com.

Materials and specifications are subject to change without notice. Featured machines in photos may include additional equipment. See your Cat dealer for available options.

©2025 Caterpillar. All Rights Reserved. CAT, CATERPILLAR, LET'S DO THE WORK, VisionLink, their respective logos, "Caterpillar Corporate Yellow," the "Power Edge" and Cat "Modern Hex" trade dress as well as corporate and product identity used herein, are trademarks of Caterpillar and may not be used without permission.

www.cat.com www.caterpillar.com

AEXQ4206-00
Build Number: 05F
(Afr-ME, Eurasia, Indonesia,
S Am [except Brazil, Chile,
Colombia], SE Asia, Sri Lanka)

