

986

WHEEL LOADER



Engine Power (ISO 14396:2002)	335 kW (449 hp)
Operating Weight – High Lift	47,175 kg (104,005 lb)

Engine meets U.S. EPA Tier 4 Final, EU Stage V, and Japan 2014 emission standards.



THE CAT[®] 986

LOW COST PER TON WITH INDUSTRY-
LEADING EFFICIENCY AND PRODUCTIVITY

The Cat[®] 986 is designed with durability built in, ensuring maximum availability through multiple lifecycles. With optimized performance and simplified serviceability, the 986 allows you to move more material efficiently and safely at a low cost per ton.



HELPING YOU MOVE MORE MATERIAL, MORE EFFICIENTLY

The Cat 986 Wheel Loader helps you move more material at a low cost per ton for a fast return on your investment.

ACHIEVE PRODUCTIVITY TARGETS

- + OPTIMUM 40- AND 50-TON TRUCK MATCH LOADER.
- + DUMP CLEARANCE DESIGNED FOR EFFICIENT TRUCK LOADING UP TO THE CAT 773 OFF-HIGHWAY TRUCK.
- + IMPROVED VISIBILITY OVER THE TOP OF THE LINKAGE.
- + CONVENIENT, RESPONSIVE ELECTRO-HYDRAULIC CONTROLS INCREASE OPERATOR PRODUCTIVITY.
- + INTEGRATED STEERING AND TRANSMISSION CONTROLS.
- + ENHANCED OPERATOR CONTROLS DELIVER GREATER EFFICIENCY, PRODUCTIVITY, AND COMFORT.



»»» MATCH AND MOVE MORE

Achieve even greater production with an optimized truck match to maximize the volume of material moved at the lowest operating cost per ton.

Cat 770 36 t (40 ton)

4 PASSES 

Cat 772 45 t (50 ton)

5 PASSES 

Cat 773 56 t (60 ton)

6 PASSES 

THE CAT 986 IS OPTIMALLY MATCHED WITH CAT OFF-HIGHWAY TRUCKS.

DO MORE FOR LESS WITH ELECTRO HYDRAULIC LOAD SENSE

Increase efficiency through our load sense hydraulic system. Load sense hydraulics maximize performance by directing hydraulic fluid flow through implement and steering system only when needed.

- + Low fuel consumption
- + Consistent performance and efficiency with low system heat

ELECTRO HYDRAULIC SYSTEMS BOOST PRODUCTIVITY

With the 986's electro hydraulic controls, operators have the precise maneuvering control that leads to excellent productivity. Electronically controlled hydraulic cylinder stops and easy-to-use soft detent controls make precise movements simple and comfortable. A load-sensing steering system with 35 degrees of articulation allows precise positioning and easy loading in tight areas.

WORLD-CLASS OPERATOR COMFORT AND ERGONOMICS

EASY ENTRY

Operators access the cab by standard 45° anti-skid stairways mounted on both sides of the machine. The Steering and Transmission Integrated Control (STIC™) column folds up and out of the way to make cab entry and seat adjustment easy.

COMFORT SERIES III SEAT

The Comfort Series III seat delivers total comfort throughout the workday. Standard features include mid back design and extra thick, contoured cushions, air suspension system, easy-to-reach seat levers and controls for six way adjustments, seat-mounted implement pod and STIC steer that moves with the seat. The seat also features a flip-up armrest for easier ingress/egress.

TRANSMISSION NEUTRALIZER PEDAL

The neutralizer pedal allows full power to the implement system while the machine is stationary during truck loading and extends service brake life by neutralizing transmission as service brakes are applied.

CAB COMFORT MEASURES

The 986's cabin remains comfortable at all times. Isolated cab mounts reduce vibration, while filtered, pressurized air and automatic climate control maintain an agreeable atmosphere. A floor storage tray keeps items out of the operator's way.

STEERING AND TRANSMISSION INTEGRATED CONTROL (STIC™) MAXIMIZES RESPONSIVENESS

Easy control and short, fast cycles reduce operator fatigue and increase efficiency. The STIC system combines steering, gear selection, and more into a single lever. Steering is accomplished with small side-to-side inputs, and gear changes are controlled with the fingers.

LOW OPERATOR SOUND LEVELS

Low interior sound levels help increase operator comfort, and spectator sound levels have been reduced. Optional low sound packages reduce the noise level even further.



OPERATOR-CENTERED ENVIRONMENT
REDUCED FATIGUE AND INCREASED FOCUS

TOTAL SAFETY FOCUS

KEEPING EVERY WORKER SAFE AND AWARE

Your most important job is keeping your team safe. We are constantly improving our products in an effort to provide a safe work environment for the operator and those who work on your jobsite.



🪜 EASY AND SAFE ACCESS

The cab is accessed by standard 45° angle anti-slip stairways on the left and right sides, with standard stairway lighting. All access walkways are equipped with highly effective anti-slip texture, and designed to provide three points of contact during all tasks. Many service points are accessible from ground level.



👁️ SEE AND BE SEEN WITH HIGH VISIBILITY

The cab provides excellent sight lines, and a rear-vision camera enhances visibility behind the machine, helping operators work more safely and confidently. The Cat Detect radar system is available to give the operator even greater awareness of the surrounding environment. High-visibility warning beacon is available as an option and LED work lights are standard.



⚡ BATTERY DISCONNECT SWITCH

Ground-level electrical service center with auxiliary jump start receptacle, emergency engine shutdown switch, battery disconnect switch and circuit breakers.

BUILT FOR THE TOUGHEST CONDITIONS

ROBUST STRUCTURES



A STRONG LEGACY

Built on the legacy of the 988 series, which has proven durable and reliable for nearly 60 years. The 986 features durability, performance, safety, operator comfort, and serviceability.

STRONG STRUCTURES

A full box-section rear frame resists torsional shock and twisting forces. Heavy-duty steering cylinder mounts efficiently transmit steering loads into the frame.

STRONG CONNECTIONS

Every linkage and connection is engineered for maximum durability. Axle mountings have increased structural integrity. The greased pin design of the front linkage pin joints help increase their service life.

STRONG ARMS

The lift arms are solid steel for excellent stress absorption, and the strength of key pin areas is enhanced through the use of one-piece castings. The Z-bar design of the arms enhances worksite visibility.

A PROTECTED POWERTRAIN

When the machine is turned off, a Delayed Engine Shutdown system determines whether the engine needs additional cooldown time. If so, it moves the engine into idle for a short period before final shutdown. This preserves engine life and durability.

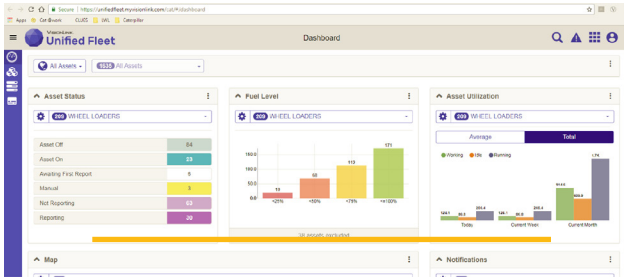
PERFORMANCE SERIES BUCKETS

Deliver faster fill times and better material retention, ultimately reducing cycle times while improving productivity and fuel efficiency.

THRIVE WITH CAT TECHNOLOGY

SMART SYSTEMS THAT SAVE YOU MONEY

The 986 features empowering technology that helps you work smarter, do more, and protect your investment.



UPGRADED TOUCHSCREEN WITH VITAL INFORMATION MANAGEMENT SYSTEM (VIMS™)

The improved touchscreen and user interface allow intuitive operation and easy navigation. VIMS decreases service time by keeping operators and technicians informed about machine systems and allows access to a wide range of machine data, helping reduce maintenance overhead and providing opportunities to increase productivity and efficiency.

- Create productivity reports with payload and work cycle segmentation.
- Identify operator training needs through productivity data.
- Access detailed data logging of machine parameters and diagnostic codes.
- Track sensor information with trend analysis and histograms to monitor machine health.



CAT TECHNOLOGY AND SUPPORT

System notifications from VIMS allow your operators and technicians to resolve problems before failure, helping reduce downtime and maintenance costs. You'll also have the full backing of Caterpillar's legendary support system: preventive maintenance programs, guaranteed maintenance contracts, excellent parts availability, and a worldwide dealer network. Genuine Cat remanufactured parts will lower your costs and further reduce the environmental impact of the machine over its service life.



CAT PRODUCTION MEASUREMENT (CPM) READY

Cat Production Measurement is an on-the-go scale system that brings payload weighing to the cab so operators can work more productively and deliver accurate loads with confidence. CPM's advanced weighing modes assist with payload accuracy and speed the loading cycle.

*Not legal for trade.



CONNECTED BUCKET

The connected bucket technology communicates with the back office at the dealership to help aid in predicting when the bucket and Ground Engaging Tools (GET) need to be replaced.



ROCK BUCKETS



HEAVY-DUTY ROCK BUCKETS



GENERAL PURPOSE BUCKETS

TOOLS TO GET EVERY JOB DONE AND LOWER YOUR COSTS

Caterpillar's ground engagement options give you the ability to adapt to any condition and do so while protecting your investment.

- Each bucket is designed to make moving the appropriate material easy and efficient, and each is engineered with special features that increase durability and service life.
- Cat Advansys™ Ground Engaging Tools (GET) give you even more ability to adapt and specialize for higher profitability. These modular tips protect expensive components, reduce your operating costs, and help you get the most out of your machine's performance.
- A number of GET components can be installed with simple, hammerless CapSure™ Retention Technology. CapSure tips, shrouds, and sidebar protectors are easily locked and unlocked with a 180-degree turn of a 3/4 inch (19 mm) ratchet, making the process fast, easy, and safe.

* For a full list of buckets, proper bucket sizing, configuration, and Engineered to Order (ETO) requests, visit the bucket expert tool (expert.cat.com)

BUCKET GROUND ENGAGEMENT TOOLS

TOUGH ENGINEERING THAT MOVES MORE

CapSure™ Sidebar Protector

MAWPs – on Side and Bottom

Base End Edge Protector

Edge Protection Options

CapSure Tip Options

CapSure Shrouds

Half Arrow Segment

Heavy Duty Tip

Heavy Abrasion Tip

Coal Tip

Heavy Penetration Tip

Please check out our Parts Catalog for more GET options.

OPTIMIZED FOR BLOCK HANDLING

The 986 Block Handler special arrangement is ready for whatever your quarry can throw at it. It delivers stability and durability with an optimized counterweight. Larger tilt and lift cylinders on the linkage help improve load control and ensure safe and long lasting operation. Ride control acts as a shock absorber, providing the operator with a smoother ride over rough terrain.



BLOCK HANDLER ARRANGEMENT
WORLD-CLASS SAFETY AND OPERATOR COMFORT

TECHNICAL SPECIFICATIONS

See cat.com for complete specifications.

ENGINE		
Engine Model	Cat® C15	
Rated Speed	2,000 rpm	
Peak Power Speed	1,600 rpm	
Engine Power – ISO 14396:2002	335 kW	449 hp
Gross Power – SAE J1995:2014	340 kW	456 hp
Net Power – SAE J1349:2011	278 kW	373 hp
Bore	137 mm	5.4 in
Stroke	171.5 mm	6.75 in
Displacement	15.2 L	927 in ³
Peak Torque @ 1,200 rpm	2411 N·m	1,778 lb-ft
Torque Rise	16%	

Two engine emission options are available:

1. Meets U.S. EPA Tier 4 Final, EU Stage V, and Japan 2014 emission standards.
2. Meets Brazil MAR-1 emission standards, equivalent to U.S. EPA Tier 3 and EU Stage IIIA.

• Net power advertised is the power available at the flywheel when the engine is equipped with fan at minimum speed, air intake system, exhaust system, and alternator.

OPERATING SPECIFICATIONS		
Operating Weight – Standard	44 355 kg	97,785 lb
Operating Weight – High Lift	47 175 kg	104,005 lb
Rated Payload – Standard (Quarry Face)	10 tonnes	11.0 tons
Bucket Capacity Range	5.0-10.3 m ³	6.5-13.5 yd ³
Cat Truck Match – Standard	770/735/740/745	
Cat Truck Match – High Lift	772/773	

TRANSMISSION					
Transmission Type			Cat Planetary Power Shift		
Forward 1	7.3 km/h	5.0 mph	Reverse 1	7.6 km/h	5.0 mph
Forward 2	12.2 km/h	8.0 mph	Reverse 2	13.6 km/h	8.0 mph
Direct Drive			Direct Drive		
Forward 2	12.7 km/h	8.0 mph	Reverse 2	14.1 km/h	9.0 mph
Forward 3	22.0 km/h	14.0 mph	Reverse 3	25.0 km/h	16.0 mph
Forward 4	39.0 km/h	24.0 mph	Reverse 4	40.8 km/h	25.4 mph

HYDRAULIC SYSTEM – LIFT/TILT	
Lift/Tilt System – Circuit	Load Sense
Lift/Tilt System Pumps	Variable displacement piston
Relief Valve Setting – Lift/Tilt	27 900 kPa 4,050 psi

HYDRAULIC CYCLE TIME	
Rackback	4.5 seconds
Raise	9.0 seconds
Dump	3.5 seconds
Lower Float Down	4.3 seconds
Total Hydraulic Cycle Time	21.3 seconds

HYDRAULIC SYSTEM – STEERING	
Steering System – Circuit	Load sensing
Steering System – Pump	Piston, variable displacement
Steering Cut Off Pressure	27 600 kPa 4,000 psi
Total Steering Angle	70°

SERVICE REFILL CAPACITIES		
Fuel Tank	535 L	141 gal
Diesel Exhaust Fluid (DEF) Tank (Tier 4 Final/Stage V only)	23 L	6 gal

- Cat diesel engines are required to use ULSD (ultra-low sulfur diesel fuel with 15 ppm of sulfur or less) and are compatible* with ULSD blended with the following lower-carbon intensity fuels** up to:
 - 20% biodiesel FAME (fatty acid methyl ester)***
 - 100% renewable diesel, HVO (hydrogenated vegetable oil) and GTL (gas-to-liquid) fuels

Refer to guidelines for successful application. Please consult your Cat dealer or “Caterpillar Machine Fluids Recommendations” (SEBU6250) for details.

* While Caterpillar engines are compatible with these alternative fuels, some regions may not allow their use.

** Tailpipe greenhouse gas emissions from lower-carbon intensity fuels are essentially the same as traditional fuels.

*** Engines with no aftertreatment devices are compatible with higher blends, up to 100% biodiesel (for use of blends higher than 20% biodiesel, consult your Cat dealer).

AIR CONDITIONING SYSTEM	
• The air conditioning system on this machine contains the fluorinated greenhouse gas refrigerant R134a or R1234yf. See the label or instruction manual for identification of the gas.	
• If equipped with R134a (Global Warming Potential = 1430), the system contains 1.8 kg (3.9 lb) of refrigerant which has a CO ₂ equivalent of 2.574 metric tonnes (2.837 tons).	

SOUND	
Tier 4 Final/Stage V	
Operator Sound Pressure Level (ISO 6396:2008)	73 dB(A)
Machine Sound Power Level (ISO 6395:2008)	113 dB(A)
Operator Sound Pressure Level (ISO 6396:2008)	72 dB(A)*
Machine Sound Power Level (ISO 6395:2008)	110 dB(A)**
Tier 3/Stage IIIA	
Operator Sound Pressure Level (ISO 6396:2008)	74 dB(A)
Machine Sound Power Level (ISO 6395:2008)	113 dB(A)
Operator Sound Pressure Level (ISO 6396:2008)	73 dB(A)*
Machine Sound Power Level (ISO 6395:2008)	110 dB(A)**

*For machines in European Union countries and in countries that adopt the “EU Directives” and “UK Directives.”

**European Union Directive “2000/14/EC” as amended by “2005/88/EC” and UK Noise Regulation 2001 No. 1701.

• The machine sound power level was measured according to ISO 6395:2008. The measurement was conducted at 70% of the maximum engine cooling fan speed.

• The operator sound pressure level was measured according to ISO 6396:2008. The measurement was conducted at 70% of the maximum engine cooling fan speed.

• Hearing protection may be needed when the machine is operated with a cab that is not properly maintained or when the doors or windows are open for extended periods or in a noisy environment.

STANDARD & OPTIONAL EQUIPMENT

Standard and optional equipment may vary. Consult your Cat dealer for details.

ELECTRICAL	STANDARD	OPTIONAL
Alarm, back-up	•	
Alternator, single 145 amp	•	
Converter, 10/15 amp, 24V to 12V	•	
Lighting system (LED, work lights, access and service platform lighting)	•	
Starting and charging system, 24V	•	
Auxiliary jump start receptacle	•	
OPERATOR ENVIRONMENT	STANDARD	OPTIONAL
Air conditioner	•	
Cab precleaner	•	
Cab, sound suppressed and pressurized, integrated rollover protective structure/falling objects protective structure (ROPS/FOPS), radio ready for entertainment, includes antenna, speakers and converter (12-volt 5-amp) and power port	•	
Cat® Detect, object detection system		•
Cat Production Measurement*		•
Cat Production Measurement ready*	•	
Cat Vision, rear vision camera system	•	
Heater, defroster	•	
Horn, electric	•	
Light, directional	•	
Lights, LED	•	
Lunchbox, beverage holders	•	
Mirrors, rearview (externally mounted)	•	
Radio, AM/FM	•	
Radio, CB ready		•
Seat, Cat Comfort (cloth), air suspension, six-way adjustable	•	
Seat belt minder	•	
Seat belt, retractable, 76 mm (3 in) wide	•	
Steering and Integrated Control (STIC™) System	•	
UV glass	•	
Wet-arm wipers/washers (front and rear) – intermittent front and rear wipers	•	

POWERTRAIN	STANDARD	OPTIONAL
Antifreeze -50° C (-58° F)		•
Brakes, oil-cooled, multi-disc, service/secondary	•	
Case drain screens	•	
Crankcase guard	•	
Electro hydraulic parking brake	•	
Engine block heater 120V or 240V		•
Engine, C15 diesel, turbocharged/aftercooled	•	
Ground-level engine shutdown switch	•	
High ambient cooling – software		•
Turbine precleaner, engine air intake	•	
Starting aid, ether, automatic	•	
Torque converter, neutralizer	•	
Transmission, planetary powershift, 4F/4R electronic control	•	
Manual switch and automatic fuel priming	•	
ADDITIONAL EQUIPMENT	STANDARD	OPTIONAL
Automatic bucket lift kickout/positioner	•	
Base machine price includes a rim allowance	•	
Cat Clean Emission Module (CEM)	•	
Cold weather starting (extra two batteries)		•
Doors, service access (locking)	•	
Ecology drains for engine, radiator, hydraulic tank	•	
Front and rear roading fenders		•
Hitch, drawbar with pin	•	
Hydraulic, steering and brake filtration/screening system	•	
Hydraulically driven demand fan	•	
Oil sampling valves	•	
Premixed 50% concentration of extended life coolant with freeze protection to -34° C (-29° F)	•	
Rear access to cab and service platform	•	
Steering, load sensing	•	
Tire Pressure Monitoring System		•
Toe kicks	•	
Vandalism protection caplocks	•	
OTHER OPTIONAL CONFIGURATIONS	STANDARD	OPTIONAL
Aggregate handler		•
Block handler		•

*Not legal for trade



オフロード法2014年
基準適合



For more complete information on Cat products, dealer services and industry solutions, visit us on the web at www.cat.com

© 2025 Caterpillar. All Rights Reserved.

Materials and specifications are subject to change without notice. Featured machines in photos may include additional equipment. See your Cat dealer for available options.

CAT, CATERPILLAR, LET'S DO THE WORK, their respective logos, Advansys, CapSure, STIC, VIMS, DEO-ULS, MEUI, "Caterpillar Corporate Yellow", the "Power Edge" and Cat "Modern Hex" trade dress as well as corporate and product identity used herein, are trademarks of Caterpillar and may not be used without permission.

www.cat.com www.caterpillar.com

AEXQ4381-00 (05-2025)
Build Number: 11B
(Global)

