



D6R2

Track-Type Tractor

Technical Specifications

Configurations and features may vary by region. Please consult your Cat® dealer for availability in your area.

Table of Contents

Specifications	2
Engine	2
Drawbar Pull	2
Service Refill Capacities	2
Transmission	2
Hydraulic Controls	2
Standards	3
Air Conditioning System	3
Dimensions	4
Blades	4
Ripper	5
Track Shoes	5
Specialty Configurations	5
Standard and Optional Equipment	6
Environmental Declaration	8

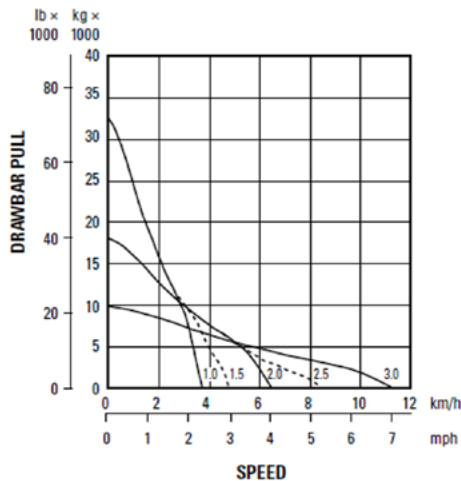
D6R2 Track-Type Tractor

Engine

Engine Model	Cat® C9	
Emissions	Meets China Nonroad Stage III emission standards, equivalent to U.S. EPA Tier 3/EU Stage IIIA	
Net Power (1,850 rpm)		
ISO 9249/SAE J1349	158 kW	211 hp
ISO 9249 (DIN)	214 mhp	
Engine Power – Maximum (1,300 rpm)		
ISO 14396	179 kW	240 hp
ISO 14396 (DIN)	243 mhp	
Bore	112 mm	4.4 in
Stroke	149 mm	5.9 in
Displacement	8.8 L	537.01 in ³

- Net power advertised is the power available at the flywheel when the engine is equipped with fan at maximum speed, air cleaner, muffler, and alternator.
- Advertised power is tested per the specified standard in effect at the time of manufacture.
- No derating required up to 2286 m (7,500 ft) altitude. Automatic derating occurs after 2286 m (7,500 ft).

Drawbar Pull



Key

- 1.0 – 1st Gear
- 1.5 – 1st Gear, additional speed with Auto Shift engaged
- 2.0 – 2nd Gear
- 2.5 – 2nd Gear, additional speed with Auto Shift engaged
- 3.0 – 3rd Gear

NOTE: Usable pull will depend upon weight and traction of equipped tractor.

Service Refill Capacities

Fuel Tank	424 L	112 gal
Cooling System	59.4 L	15.7 gal
Engine Crankcase	28 L	7.4 gal
Power Train	146 L	38.6 gal
Final Drives (each)	13.5 L	3.6 gal
Pivot Shaft	5 L	1.3 gal
Hydraulic Tank	51.5 L	13.6 gal
Roller Frames (each)	24.6 L	6.5 gal

Transmission

1.0 Forward	3.8 km/h	2.36 mph
1.5 Forward*	4.8 km/h	2.98 mph
2.0 Forward	6.5 km/h	4.04 mph
2.5 Forward*	8.4 km/h	5.22 mph
3.0 Forward	11.5 km/h	7.14 mph
1.0 Reverse	4.8 km/h	2.98 mph
1.5 Reverse*	6.2 km/h	3.85 mph
2.0 Reverse	8.4 km/h	5.22 mph
2.5 Reverse*	8.4 km/h	5.22 mph
3.0 Reverse	14.5 km/h	9.00 mph

*With optional AutoShift selected.

Hydraulic Controls

Pump Type – Implements	Variable Displacement Piston	
Pump Type – Steering	Variable Displacement Piston	
RPM at Rated Engine Speed – Implement	1,961 rpm	
RPM at Rated Engine Speed – Steering	2,257 rpm	
Pump Output at Rated Engine Speed		
Implement	188 L/min	49.7 gal/min
Steering	184 L/min	48.6 gal/min
Maximum Lift Cylinder Flow	205 L/min	54.2 gal/min
Maximum Tilt Cylinder Flow	90 L/min	23.8 gal/min
Maximum Ripper Cylinder Flow	205 L/min	54.2 gal/min
Maximum Operating Pressures		
Bulldozer Lift Cylinder	19 300 kPa	2,799 psi
Bulldozer Tilt Cylinder	19 300 kPa	2,799 psi
Ripper Lift Cylinder	19 300 kPa	2,799 psi
Steering	40 500 kPa	5,874 psi
Main Relief Valve		
Pressure Setting – Implement	21 700 kPa	3,147 psi
Pressure Setting – Steering	45 500 kPa	6,599 psi

D6R2 Track-Type Tractor Specifications

Standards

Sound Level Information

- Hearing protection may be needed when the machine is operated with an open operator station, in a noisy environment, with a cab that is not properly maintained, or when the doors and windows are open for extended periods of time.

Sound Level			Test Method
Operator Sound Pressure Level	Standard	80 dB(A)	"ISO 6396:2008" ⁽¹⁾
	Sound Suppressed	80 dB(A)	
Exterior Sound Pressure Level	Standard	116 dB(A)	"ISO 6395:2008" ⁽²⁾
	Sound Suppressed	113 dB(A)	

⁽¹⁾The measurement was conducted at 100% of the maximum engine cooling fan speed. The sound level may vary at different engine cooling fan speeds or when fitted with optional engine fan speed selections. The measurement was conducted with the cab doors and the cab windows closed and the HVAC on "medium". The cab was properly installed and maintained.

⁽²⁾The measurement was conducted at 100% of the maximum engine cooling fan speed. The sound level may vary at different engine cooling fan speeds or when fitted with optional engine fan speed selections.

- The sound levels listed above include both measurement uncertainty and uncertainty due to production variation.

Rollover Protective Structure (ROPS)/Falling Object Protective Structure (FOPS)

- ROPS meets the following criteria: ISO 3471:2008.
- FOPS meets the following criteria: ISO 3449:2005 Level II.

Brakes

- Brakes meet the standard ISO 10265:2008.

Air Conditioning System

The air conditioning system on this machine contains the fluorinated greenhouse gas refrigerant R134a or R1234yf. See the label or instruction manual for identification of the gas.

If equipped with R134a (Global Warming Potential = 1430), the system contains 2.0 kg (4.4 lb) of refrigerant which has a CO₂ equivalent of 2.86 metric tonnes (3.15 tons).

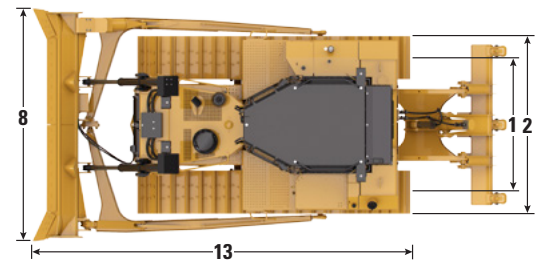
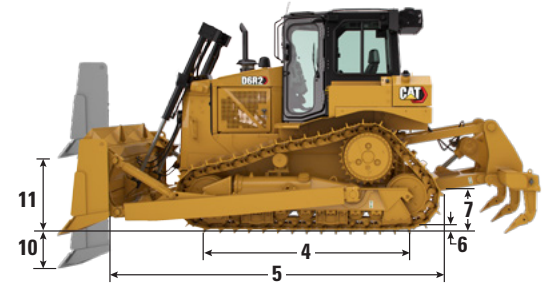
D6R2 Track-Type Tractor Specifications

D6R2 Dimensions

Operating Weight Semi Universal (SU)	19 066 kg	42,033 lb
Shipping Weight	16 209 kg	35,735 lb
Ground Pressure: ISO 16754 (SU)	62.6 kPa	9.08 psi
Undercarriage	39 sections with 6 bottom rollers	
1 Track Gauge	1880 mm	74.0 in
Width of Standard Track Shoe – Moderate Service	560 mm	22.0 in
2 Width of Tractor (without trunnions)	2440 mm	96.1 in
Width over Trunnions	2640 mm	103.9 in
3 Machine Height to top of ROPS	3216 mm	126.6 in
4 Length of Track on Ground	2664 mm	104.9 in
5 Length of Basic Tractor	3860 mm	152.0 in
Add the following to the total length of the machine when these attachments are installed.		
Ripper	1403 mm	55.2 in
Drawbar	366 mm	14.4 in
Striker Box	511 mm	20.1 in
Ground Contact Area (ISO 16754)	2.98 m ²	32.1 ft ²
Track Pitch	203 mm	8.0 in
6 Grouser Height	65 mm	2.6 in
7 Ground Clearance	372 mm	14.6 in
Oscillation at Front Idler	86 mm	3.4 in

Operating weight includes lubricants, coolant, full fuel tank, standard track, ROPS cab, air conditioner, hydraulic controls, blade, drawbar and operator.

Shipping weight includes lubricants, coolant, 10% fuel tank, standard track, ROPS cab, air conditioner and hydraulic controls.



Blades

Type	Semi-Universal (6SU)	
Capacity (SAE J1265)	5.6 m ³	7.32 yd ³
8 Width across End Bits	3260 mm	128.3 in
Width without End Bits	3194 mm	125.7 in
9 Height	1412 mm	55.6 in
10 Dig Depth	473 mm	18.6 in
11 Lift Height	1104 mm	43.5 in
12 Maximum Tilt at Blade Corner	786 mm	30.9 in
Maximum Tilt	743 mm	29.3 in
Pitch Adjustment	±4.0°	
Length of Machine (blade straight)	5109 mm	201.1 in
Weight	2333 kg	5,143 lb

D6R2 Track-Type Tractor Specifications

Rippers

Type	Multi-Shank, Fixed Parallelgram	
Number of Pockets	3	
Overall Beam Width	2190 mm	86.2 in
Weight with Standard Shanks	1644 kg	3,624 lb
Maximum Penetration	500 mm	19.7 in
Maximum Penetration Force	65.6 kN	14,747 lb
Pryout Force	116.5 kN	26,190 lb

Track Shoes

Some track shoes not available in all regions. Please consult your Cat dealer for details.

	Standard	
	560 mm (22 in)	600 mm (24 in)
Heavy Duty (HD)		
Moderate Service	✓	✓
Extreme Service	✓	

Specialty Configurations

Extreme/Arctic Cold

- Heavy duty battery
- Heated/ventilated seat
- 150 amp heavy duty alternator

D6R2 Standard and Optional Equipment

Standard and Optional Equipment

Standard and optional equipment may vary. Consult your Cat dealer for details.

	Standard	Optional		Standard	Optional
POWERTRAIN			ELECTRICAL		
Cat C9 turbocharged direct injection diesel engine	✓		Alternator (115 amp)	✓	
Air cleaner, pre-cleaner with strata tube dust ejector	✓		Backup alarm	✓	
Air filter with electronic service indicator	✓		Batteries, 2 maintenance free 12V (24V system)	✓	
Aluminum bar plate Air-to-Air	✓		Converter, 12V, 10 amp with 1 outlet	✓	
Aftercooler (ATAAC)	✓		Electric start, 24V	✓	
Aluminum bar plate radiator	✓		Forward warning horn	✓	
Direct drive fan blower	✓		Standard Lights – 4 LED light package	✓	
Electric fuel priming pump	✓		Upgraded Lights – 6 LED light package		✓
Electronic parking brake	✓		Alternator, 150 amp, heavy duty		✓
Extended life coolant	✓		Heavy duty battery		✓
Final drives, 3-planet single reduction planetary	✓		UNDERCARRIAGE		
Fuel filter with water in fuel sensor/indicator	✓		Carrier roller ready	✓	
Muffler with mitered stack	✓		End track guiding guards	✓	
Planetary transmission, electronic power shift 3F/3R speeds	✓		Equalizer bar	✓	
Prescreener	✓		Heavy Duty sealed and lubricated track	✓	
Torque converter/divider	✓		Hydraulic track adjusters	✓	
Exterior sound suppression		✓	Lifetime lubricated idlers	✓	
Radiator core protector		✓	Lifetime lubricated track rollers	✓	
Raised pre-cleaner		✓	Pinned pivot shafts	✓	
OPERATOR ENVIRONMENT			Replaceable sprocket rim segments	✓	
Adjustable armrest	✓		Tubular track roller frames	✓	
Adjustable contour suspension seat	✓		Center track guiding		✓
Cab with integrated ROPS	✓		Full length track guiding		✓
Caterpillar monitoring system	✓				
– coolant temperature					
– hydraulic oil temperature					
– power train oil temperature					
– fuel level					
– engine speed, tachometer					
– service hour meter					
– system warning lamps					
Dash-mounted foot pads	✓				
Decelerator pedal	✓				
Differential steering tiller-bar control	✓				
Electronic rotary dial throttle switch	✓				
Hydraulic controls, pilot operated with electronic deactivation switch	✓				
Rearview mirror	✓				
Retractable 76 mm (3 in) seat belt	✓				
Additional mirror		✓			
Suspension seat, cloth cover		✓			
Suspension seat, cloth cover, heated and ventilated		✓			

(continued on next page)

D6R2 Standard and Optional Equipment

Standard and Optional Equipment *(continued)*

Standard and optional equipment may vary. Consult your Cat dealer for details.

	Standard	Optional		Standard	Optional
SERVICE AND MAINTENANCE			OTHER STANDARD EQUIPMENT		
Diagnostic connector	✓		Front pull device	✓	
Scheduled Oil Sampling (S·O·S SM) ports	✓		Hydraulic oil cooler	✓	
– engine oil			Lift cylinder mounting	✓	
– engine coolant			Lift cylinders with lines	✓	
– power train oil			Load sensing hydraulics, dozer lift and tilt	✓	
– hydraulic oil			Louvered radiator door	✓	
Ecology drains, power train		✓	Vandalism protection	✓	
High speed oil change system		✓	– cap locks fitted to battery box and fuel tank drain		
TECHNOLOGY PRODUCTS			– provision for cap locks for fluid compartments and engine enclosures		
Cat Product Link™, Cellular PL641	✓				
Cat Product Link, Satellite PL631		✓			
BLADES					
Semi-Universal blade, hydraulic tilt		✓			
Semi-Universal blade, hydraulic tilt, land clearing		✓			
ATTACHMENTS					
Multi-shank ripper, straight or curved shanks (3)		✓			
Rear counterweight		✓			
Rigid drawbar		✓			
Ripper hydraulics		✓			
GUARDS					
Bottom guards	✓				
Engine cover with perforated hood and side enclosures	✓				
Fuel tank guard		✓			
Solid hood engine enclosure		✓			

D6R2 Environmental Declaration

The following information applies to the machine at the time of final manufacture as configured for sale in the regions covered in this document. The content of this declaration is valid as of the date issued; however, content related to machine features and specifications are subject to change without notice. For additional information, please see the machine's Operation and Maintenance Manual.

For more information on sustainability in action and our progress, please visit <https://www.caterpillar.com/en/company/sustainability>.

Engine

- The Cat® C9 turbocharged direct injection diesel engine meets China Nonroad Stage III emission standards, equivalent to U.S. EPA Tier 3/EU Stage IIIA emissions standards.
- Cat engines are compatible with diesel fuel blended with the following lower-carbon intensity fuels* up to:
 - ✓ 100% biodiesel FAME (fatty acid methyl ester)*
 - ✓ 100% renewable diesel, HVO (hydrogenated vegetable oil) and GTL (gas-to-liquid) fuels

Refer to guidelines for successful application. Please consult your Cat dealer or "Caterpillar Machine Fluids Recommendations" (SEBU6250) for details.

**Tailpipe greenhouse gas emissions from lower-carbon intensity fuels are essentially the same as traditional fuels.*

***For use of blends higher than 20% biodiesel, consult your Cat dealer.*

Air Conditioning System

- The air conditioning system on this machine contains the fluorinated greenhouse gas refrigerant R134a or R1234yf. See the label or instruction manual for identification of the gas.

If equipped with R134a (Global Warming Potential = 1430), the system contains 2.0 kg (4.4 lb) of refrigerant which has a CO₂ equivalent of 2.86 metric tonnes (3.15 tons).

Paint

- Based on best available knowledge, the maximum allowable concentration, measured in parts per million (PPM), of the following heavy metals in paint are:
 - Barium < 0.01%
 - Cadmium < 0.01%
 - Chromium < 0.01%
 - Lead < 0.01%

Sound Performance

For machines required to meet applicable regional regulations of Ukraine, United Kingdom, and countries that adopt the "EU Directives".

Operator Sound Pressure Level (ISO 6396:2008) – 80 dB(A)

Exterior Sound Power Level (ISO 6395:2008) – 116 dB(A)

Oils and Fluids

- Caterpillar factory fills with ethylene glycol coolants. Cat Diesel Engine Antifreeze/Coolant (DEAC) and Cat Extended Life Coolant (ELC) can be recycled. Consult your Cat dealer for more information.
- Cat Bio HYDO™ Advanced is an EU Ecolabel approved biodegradable hydraulic oil.
- Additional fluids are likely to be present, please consult the Operations and Maintenance Manual or the Application and Installation guide for complete fluid recommendations and maintenance intervals.

For more complete information on Cat products, dealer services, and industry solutions, visit us on the web at www.cat.com

© 2025 Caterpillar
All rights reserved

Materials and specifications are subject to change without notice. Featured machines in photos may include additional equipment. See your Cat dealer for available options.

CAT, CATERPILLAR, LET'S DO THE WORK, VisionLink, their respective logos, "Caterpillar Corporate Yellow," the "Power Edge" and Cat "Modern Hex" trade dress as well as corporate and product identity used herein, are trademarks of Caterpillar and may not be used without permission.

AEXQ3975-00 (05-2025)
(S Am excluding Chile,
Colombia, and Brazil)

