

# MH3040

## WHEEL MATERIAL HANDLER



Engine Model  
Maximum Operating Weight  
Maximum Reach

Cat® C7.1  
38 700 kg (85,310 lb)  
15 490 mm (50.8 ft)



# MH3040

## WHEEL MATERIAL HANDLER

The Cat® MH3040 material handler is built to be powerful, reliable, and easy to use. With a comfortable cab and low maintenance costs, it helps optimize performance and boost productivity for operators. Designed with proven components, it helps provide the durability and power needed to handle tough jobs with confidence.



### PROVEN RELIABILITY

The MH3040 is built from proven components designed to withstand the toughest applications. Count on your machine to provide the durability and reliability you expect from Cat products.

### LOW FUEL CONSUMPTION

Two power modes and an electrically driven fan with auto reverse function help minimize fuel use and increase engine efficiency.

### LOW MAINTENANCE COSTS

Long life filters for fuel, hydraulic oil, and air help lower your overall costs.





## Machine Setup Simplification

- At the touch of fingertips and navigating user-friendly icons, the latest operator oriented User Interface (UI) maximizes uptime and gets crews to work without delay. From re-ordering work tool lists to creating new work tool combinations as needed, operators can quickly set up machines and easily access information.
- The interface allows operators to maintain accuracy and makes the most of every second of their shift. Adding the ability to input couplers and attachments into the system makes setting up work tool combinations highly efficient by significantly reducing calibration time. It also eliminates the need to measure up again when changing Cat work tool attachments and makes it manageable for a single person to check and adjust for bucket wear.

## Cat Payload\*

- Cat Payload provides operators with on-the-go weighing to help them hit load targets and avoid overloading, underloading, or misloading materials. Combine Payload with VisionLink™\*\* to analyze jobsites and individual assets for remote management of production targets and key metrics.

## Swing Assist

- Swing Assist automatically stops machine swing at operator-defined preset points. Simply swing to the desired stopping point and activate using the machine monitor or a preset joystick button. As you get closer, the machine will automatically decelerate and not allow swing past the set point. Swing Assist helps you hit more repetitive swing targets to help reduce fuel use and improve cycle times.

*\*Payload technologies are not legal for trade.*

*\*\*VisionLink subscription required.*

*Not all features are available in all regions. Please check with your Cat dealer for specific offering availability in your area.  
Build Number: 07E*

# HIGH PERFORMANCE



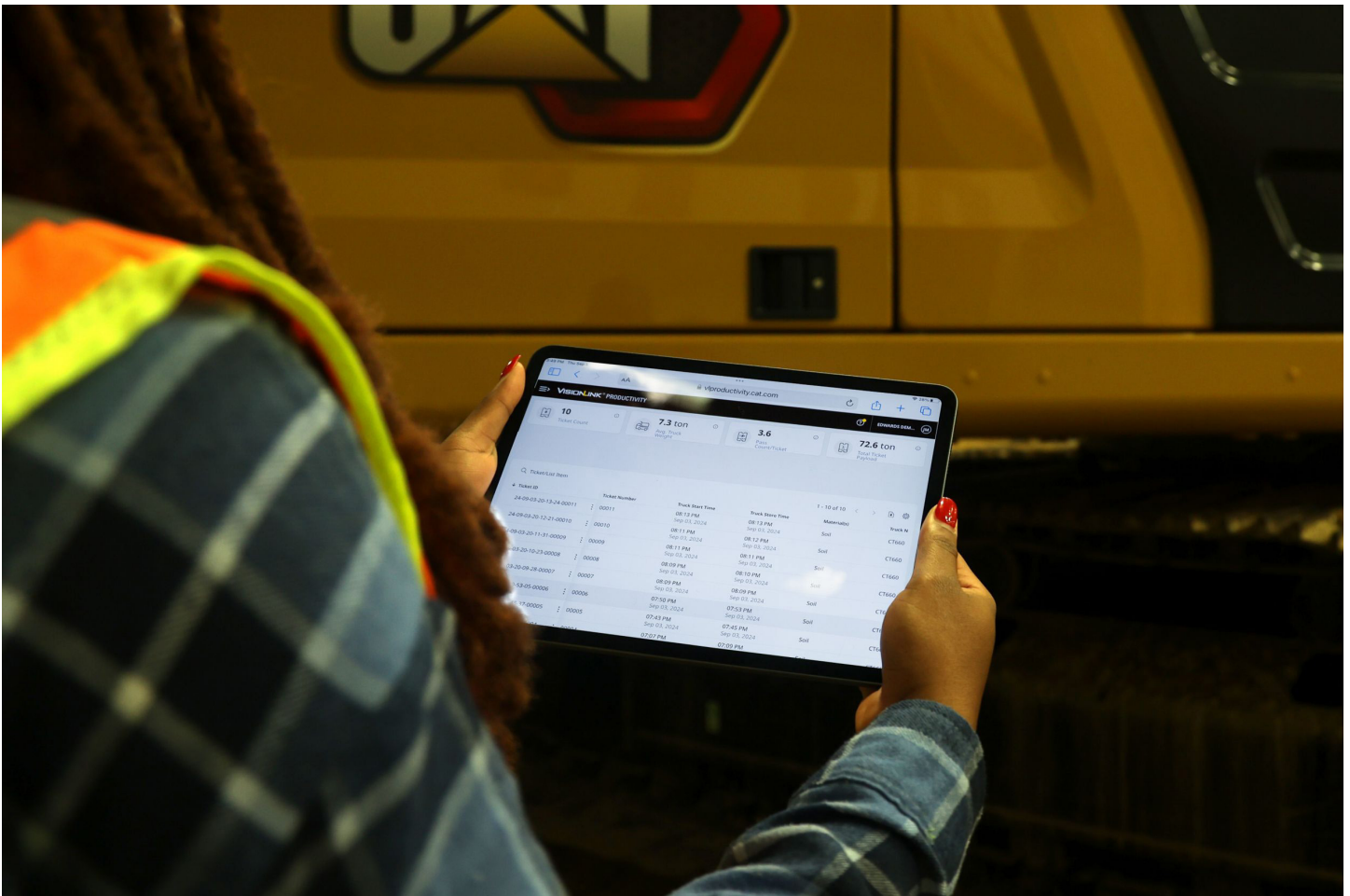
- The C7.1 engine can run on biodiesel up to B20 and meets U.S. EPA Tier 4 Final and EU Stage V emission standards with an aftertreatment system that requires no scheduled maintenance or downtime.
- Match the machine to the job with three power modes – Power, Smart, and Eco. Smart mode automatically matches engine and hydraulic power to working conditions, helping provide maximum power when needed and reducing power when it isn't to save fuel.
- The advanced electro-hydraulic system helps provide the optimum balance of power and efficiency while giving you the control you need.
- Available SmartBoom™ lets the boom freely travel up and down without using any pump flow so operators can focus on stick and bucket work.
- Valve priority helps put hydraulic pressure and flow where you need it.
- Program and store your preferred power mode and joystick settings using your Operator ID. The machine will automatically remember your selections.



# INTEGRATED CAT® TECHNOLOGIES

- Cat Payload helps you achieve precise load targets to improve your operating efficiency. Pick up a load of material – with a grapple or clamshell attachment – and get a real-time weight estimate without swinging.
- Combine Cat Payload with VisionLink and remotely manage your production targets.
- VisionLink provides actionable data insights for all assets – regardless of fleet size or equipment manufacturer.\* Review equipment data from your desktop or mobile device to maximize uptime and optimize assets. Dashboards provide information such as hours, miles, location, idle time, and fuel utilization. Make informed decisions that lower costs, simplify maintenance, and improve safety and security on your jobsite.
- Swing Assist automatically stops machine swing at operator-defined preset points. Simply swing to the desired stopping point and activate using the machine monitor or a preset joystick button. As you get closer, the machine will automatically decelerate and not allow swing past the set point. Swing Assist helps you hit more repetitive swing targets to help reduce fuel use and improve cycle times.
- Remote Troubleshoot is a mobile application that allows your Cat dealer to perform diagnostic testing on your connected machine remotely to help ensure that issues are resolved quickly and with less downtime.
- Remote Flash is a mobile application that allows you to update onboard software without a technician being present, allowing you to initiate software updates when convenient, increasing your overall operating efficiency.

*\*Data field availability can vary by equipment manufacturer.*



# WORK IN COMFORT



- Choose between a deluxe and premium cab. Both provide a comfortable, ergonomic work environment.
- The cab has a wide seat that adjusts for operators of all sizes.
- Get in and out of the cab easier using the tilt-up left console.
- Control the machine comfortably with easy-to-reach controls all located in front of you.
- Standard automatic climate control keeps you at the right temperature all shift long.
- Stow your gear with plenty of in-cab storage beneath and behind the seat, overhead, and in the consoles. A cup holder, document holder, bottle holder, and coat hook are also provided.
- Connect to personal devices via the standard radio's USB ports and Bluetooth® technology.
- Optional auxiliary relay powers on and turns off CB radios, beacon lights, and other attachments without taking your hands off the joysticks.
- Continuously improved user interface allows for intuitive navigation, minimizing performance interruption with the easy-to-use touchscreen menu.



# RELIABLE, DURABLE, AND VERSATILE

- Count on your machine to withstand wear throughout the years. Boom, sticks, and other high-stress areas are reinforced with thick multi-plate fabrications, castings, and forgings to help ensure quality and reliability.
- The upper frame uses specially designed mountings to support the heavy-duty cab, and the lower frame is reinforced to help enhance component durability.
- Work up to 3000 m (9,840 ft) above sea level without de-rating.
- Don't let the temperature stop you from working. The machine has a standard high-ambient temperature capability up to 43°C (109°F) and cold start capability down to -18°C (0°F).
- Auto warm-up speeds up hydraulic oil warming in cold temperatures and helps prolong the life of components.
- Standard autolube simplifies maintenance by automatically keeping the machine greased from the swing bearing and cab riser to the stick end.
- Match your machine to the application. Multiple configurations allow you to customize your machine to your needs.
- An optional 20 kW (27 hp) generator allows for magnet operation. Generator controls are fully integrated into the cab monitor.
- Expand your work capabilities with attachments for a variety of applications
- Make operating easier with the touch of a joystick button. Additional auxiliary relays allow you to power on or turn off a CB radio, beacon light, and even a dust suppression watering system without taking your hands off the joysticks.





# MAINTENANCE

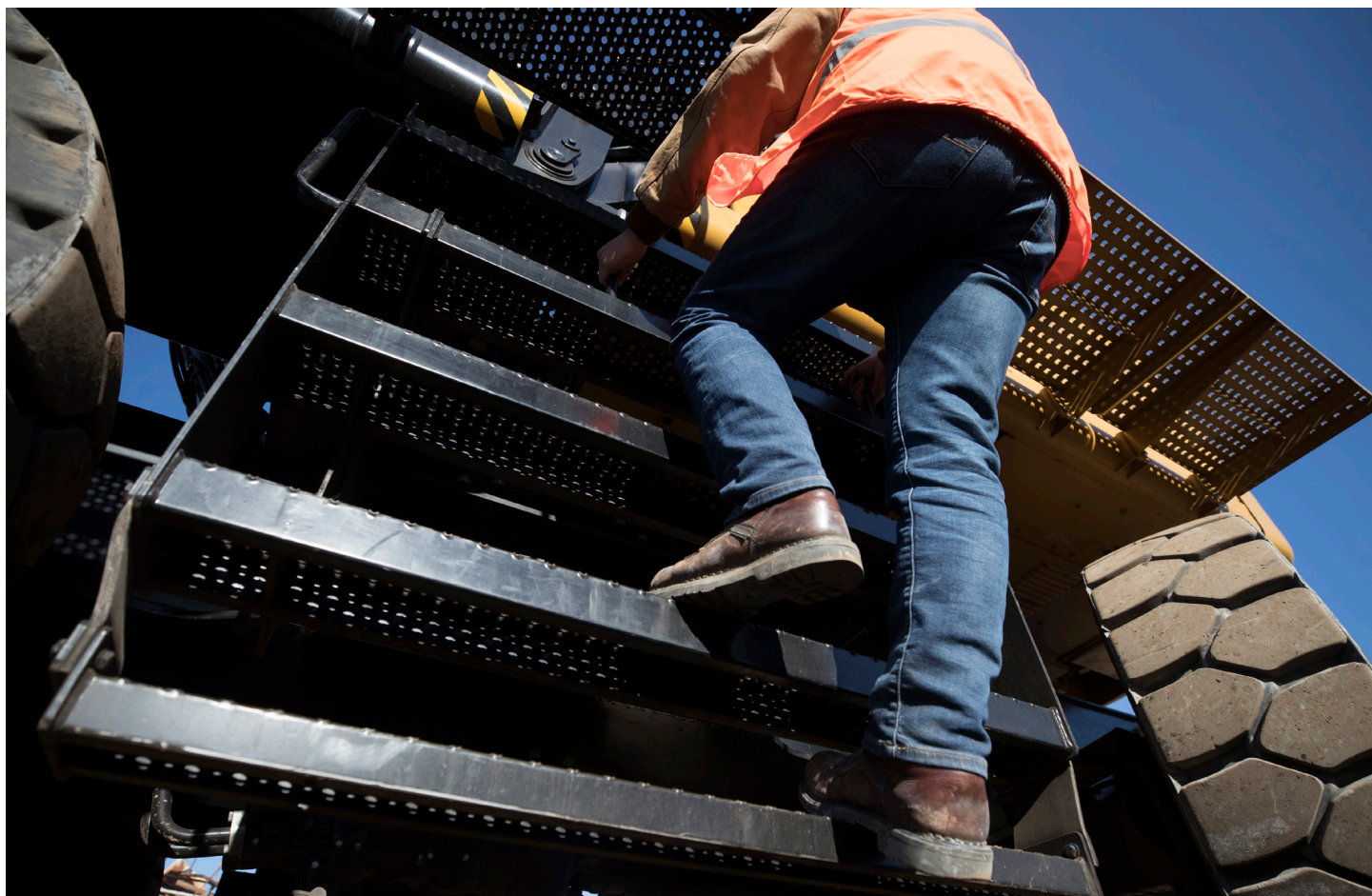


- Track your machine's filter life and maintenance intervals via the in-cab monitor.
- Scheduled Oil Sampling (S-O-S<sup>SM</sup>) ports are located at ground level, helping simplify maintenance and allowing for quick, easy extraction of fluid samples for analysis.
- The long life of the air intake filter with pre-cleaner helps save on maintenance costs.
- The hydraulic oil filter helps provide high filtration performance, anti-drain valves to help keep oil clean when the filter is replaced, and long life with a 3,000-hour replacement interval.
- High-efficiency cooling fans run only when needed; you can program intervals so they automatically reverse to help keep cores clean without interrupting your work.
- Boost productivity with proactive service reminders. The integrated vehicle health management system alerts the operator with step-by-step service guidance and the parts needed to help reduce unnecessary downtime.



# SAFETY FEATURES

- Cab Avoidance helps you avoid contact between your work tool attachment and the cab.
- Standard 2D E-fence prevents your machine from moving outside operator-defined parameters.
- Ground-level shutoff switch stops all fuel to the engine when activated and shuts down the machine.
- Keep your machine secure with Operator ID. Use your PIN code on the monitor to enable the push-button starting feature.
- Enjoy great all-around visibility with the help of small cab pillars, large windows, and a flat engine hood design. Rearview and side-view cameras are standard.
- Standard 1800-lumen LED exterior lights illuminate your surroundings for a safer work environment.
- Thick impact-resistant windshields fulfill P5A standards.
- Service platform design provides easy, safe, and quick access to the upper service platform. The service platform steps use an anti-skid punch plate to help prevent slipping.
- The standard hydraulic lockout lever isolates all hydraulic and travel functions in the lowered position.
- Optional Operator Protective Guards (OPG) protect from falling and flying debris.
- In an emergency, lower the cab safely with the emergency cab lowering valve behind the cab riser or to the right of the seat. The valve located behind the cab riser is easily accessible.
- Boom and stick lowering check valves prevent reverse flow, keeping your front linkage securely in place should the hydraulic system unexpectedly lose pressure.
- Make service work more accessible and safer with optional inspection lighting. With the flip of a switch, lights will illuminate the engine pump, battery, and radiator compartments to enhance visibility.



# SUSTAINABILITY

- The Cat C7.1 engine meets U.S. EPA Tier 4 Final and EU Stage V emission standards.
- The MH3040 emits less CO<sub>2</sub> than the M325D L MH.
- Cat diesel engines are required to use ULSD (ultra-low sulfur diesel fuel with 15 ppm of sulfur or less) and are compatible\* with ULSD blended with the following lower-carbon intensity fuels\*\* up to: 20% biodiesel FAME (fatty acid methyl ester)\*\*\* or 100% renewable diesel, HVO (hydrogenated vegetable oil) and GTL (gas-to-liquid) fuels. Refer to guidelines for successful application. Please consult your Cat dealer or "Caterpillar Machine Fluids Recommendations" (SEBU6250) for details.
- Cat S-O-S<sup>SM</sup> Services help reveal excessive wear, contaminated fluids or other "unseen" issues that can shorten component life. In many cases, you can extend oil and coolant change intervals by using fluid monitoring. Consult your Cat dealer or the machine's operation and maintenance manual for more information.
- Cat 2D E-fence keeps the front linkage within a predefined work area to avoid hazards such as traffic – not only helping keep personnel safe and helps avoid repairs, downtime, and costly jobsite fines.
- Extended maintenance intervals help reduce downtime but decrease the amount of fluid and filters that are replaced over the life of the machine.
- VisionLink displays the CO<sub>2</sub> emissions for monitored assets, calculated by fuel type for the Runtime Fuel Burned each day in a selected date range.
- Remote Flash helps minimize downtime and maintenance time while keeping your asset running with maximum efficiency. Alerts for machine updates are sent virtually from your Cat dealer and updates can be deployed without a dealer technician needing to be on site.
- Remote Troubleshoot helps decrease maintenance time and keeps your machine running with maximum efficiency by allowing your Cat dealer to virtually test the machine while working. Once a problem is identified, a technician can fix it the first time, saving time and money.

*\* While Caterpillar engines are compatible with these alternative fuels, some regions may not allow their use.*

*\*\* Tailpipe greenhouse gas emissions from lower-carbon intensity fuels are essentially the same as traditional fuels.*

*\*\*\* Engines with no aftertreatment devices are compatible with higher blends, up to 100% biodiesel (for use of blends higher than 20% biodiesel, consult your Cat dealer).*





# MORE THAN MACHINES

BUILT AROUND YOUR SUCCESS

When you buy Cat equipment, you get so much more than the machine. You also get the support of a world-class dealer network, backed by a range of flexible solutions, technology, tools, and more.



## CUSTOMER VALUE AGREEMENTS

A Customer Value Agreement (CVA) from your Cat dealer helps you do more and worry less. A CVA simplifies machine ownership and maintenance, adds the security of expert dealer support, and gives you the peace of mind from effective equipment health management.

## GENUINE CAT® PARTS

Genuine Cat parts deliver the highest level of reliability and productivity. Order direct from your Cat dealer or shop online at [parts.cat.com](https://parts.cat.com).

## REPAIR OPTIONS

A broad range of repair options gives you choices that work with your needs, budget, and timeline. Every repair is performed by expert Cat technicians. You'll receive smart repair advice, a timely, accurate quote, and service that gets your machine back into action quickly.

## FINANCIAL SERVICES

Count on Cat Financial to provide the best finance and extended protection solutions for your business. For more than 30 years, we have helped our customers succeed through financial service excellence.



DOZERS



SKID STEERS



MATERIAL HANDLERS



EXCAVATORS



WHEEL LOADERS



TRACK LOADERS

# INCREASE YOUR PRODUCTIVITY AND PROFIT WITH CAT ATTACHMENTS

Easily expand the performance of your machine by using Cat attachments. Each Cat attachment is designed to fit the weight and horsepower of Cat material handlers for improved performance, safety, and stability.

## ORANGE PEEL GRAPPLES



## FORESTRY GRAPPLES



## CLAMSHELL GRAPPLES





# TECHNICAL SPECIFICATIONS

## Engine

Engine Model	Cat® C7.1	
Net Power – ISO 9249	151 kW	202 hp
Net Power – ISO 9249 (DIN)	205 hp (metric)	
Engine Power – ISO 14396	150 kW	201 hp
Engine Power – ISO 14396 (DIN)	204 hp (metric)	
Bore	105 mm	4 in
Stroke	135 mm	5 in
Displacement	7 L	428 in³
Biodiesel Capability	Up to B20¹	
Emissions	Meets U.S. EPA Tier 4 Final and EU Stage V emission standards.	

Net power advertised is the power available at the flywheel when the engine is equipped with fan, air intake system, exhaust system, and alternator with engine speed at 2,200 rpm. Advertised power is tested per the specified standard in effect at the time of manufacture.

¹Cat diesel engines are required to use ULSD (ultra-low sulfur diesel fuel with 15 ppm of sulfur or less) and are compatible\* with ULSD blended with the following lower-carbon intensity fuels\*\* up to: 20% biodiesel FAME (fatty acid methyl ester)\*\*\* or 100% renewable diesel, HVO (hydrotreated vegetable oil) and GTL (gas-to-liquid) fuels. Refer to guidelines for successful application. Please consult your Cat dealer or "Caterpillar Machine Fluids Recommendations" (SEBU6250) for details.

\* While Caterpillar engines are compatible with these alternative fuels, some regions may not allow their use.

\*\* Tailpipe greenhouse gas emissions from lower-carbon intensity fuels are essentially the same as traditional fuels.

\*\*\* Engines with no aftertreatment devices are compatible with higher blends, up to 100% biodiesel (for use of blends higher than 20% biodiesel, consult your Cat dealer).

## Transmission

Maximum Travel Speed	18 km/h	11.2 mile/h
Drawbar Pull	154 kN	34,621 lbf
Maximum Gradeability	44%	
Maximum Towable Dual Axles Trailer Mass	50 000 kg	110,000 lb

## Hydraulic System

Maximum Pressure – Implements	35 000 kPa	5,076 psi
Maximum Pressure – Swing	28 400 kPa	4,061 psi
Maximum Pressure – Travel	35 000 kPa	5,076 psi

## Swing Mechanism

Swing Speed*	7 r/min	
Maximum Swing Torque	82 kN-m	60,628 lbf-ft

\*For CE-marked machine default value may be set lower.

## Weights

Operating Weight	38 700 kg	85,310 lb
Operating weight includes full fuel tank, 75 kg (165 lb) operator, grapple 2000 kg (4,410 lb) and single tires. Weight varies depending on configuration.		

## Service Refill Capacities

Fuel Tank Capacity	474 L	125.2 gal
Cooling System	25 L	6.6 gal
Engine Oil	25 L	6.6 gal
Rear Axle – Housing (Differential)	34.2 L	9 gal
Final Drive	7.4 L	2 gal
Powershift Transmission	3 L	0.8 gal
Hydraulic System – Including Tank	329 L	86.9 gal
Hydraulic Tank	147 L	38.8 gal
Diesel Exhaust Fluid (DEF) Tank	41 L	10.8 gal

## Dimensions

Boom	MH 9.3 m (30'6")	
Stick	Industrial 7.1 m (23'3")	
Shipping Length	12 800 mm	42 ft
Machine Length	6330 mm	20.8 ft
Tail Swing Radius	3130 mm	10.3 ft
Counterweight Clearance	1740 mm	5.7 ft
Cab Height- Lowered	3660 mm	12 ft
Cab Height-Lowered with OPG	3805 mm	12.5 ft
Cab Height-Raised	6255 mm	20.5 ft
Cab Height-Raised with OPG	6400 mm	21 ft
Wheel Base	3210 mm	10.5 ft
Shipping Width	3000 mm	9.8 ft
Ground Clearance	265 mm	0.9 ft
Undercarriage Length	6225 mm	20.4 ft

## Working Ranges

Boom	MH 9.3 m (30'6")	
Stick	Industrial 7.1 m (23'3")	
Maximum Reach	15 490 mm	50.8 ft
Maximum Height	17 510 mm	57.4 ft
Maximum Dump Height	5445 mm	17.9 ft
Maximum Depth	5265 mm	17.3 ft
Boom Pin Height	12 195 mm	40 ft

## Air Conditioning System

The air conditioning system on this machine contains the fluorinated greenhouse gas refrigerant R134a or R1234yf. See the label or instruction manual for identification of the gas. If equipped with R134a (Global Warming Potential = 1430), the system contains 1.2 kg (2.6 lb) of refrigerant which has a CO<sub>2</sub> equivalent of 1.716 metric tonnes (1.891 tons). If equipped with R1234yf (Global Warming Potential = 0.5), the system contains 1.05 kg (2.31 lb) of refrigerant which has a CO<sub>2</sub> equivalent of 0.001 metric tonnes (0.001 tons).

## Sustainability

Recyclability	95%
---------------	-----

# STANDARD AND OPTIONAL EQUIPMENT

NOTE: Standard and optional equipment may vary. Consult your Cat® dealer for details.

	Standard	Optional
<b>UNDERCARRIAGE AND STRUCTURES</b>		
All wheel drive	✓	
Automatic brake/axle lock	✓	
Creeper speed	✓	
Electronic swing and travel lock	✓	
Heavy-duty axles, advanced disc brake system, and travel motor with adjustable braking force	✓	
Lockable, oscillating axle with remote greasing point	✓	
Two speed hydrostatic transmission	✓	
Counterweight 7700 kg (16,975 lb)	✓	
16.00-25 single solid rubber tires		✓
23.5-R25 single pneumatic tires		✓
12.00-20 dual solid rubber tires		✓
Hitch towing		✓
<b>BOOM AND STICKS</b>		
10.4 m (34'9") Material Handler boom		✓
9.3 m (30'6") Material Handler boom		✓
9.9 m (32'6") Barge boom		✓
6.8 m (22'4") Log Loader boom (N Am only)		✓
7.5 m (24'9") Industrial stick		✓
7.1 m (23'3") Industrial stick		✓
5.7 m (18'7") Industrial stick		✓
6.4 m (21'0") Straight stick		✓
4.1 m (13'3") Over/Under Log Loader stick (N Am only)		✓
<b>CAB</b>		
Advanced sound suppressed Tip Over Protective Structure (TOPS) certified cab with rubber mounts	✓	
High-resolution 254 mm (10") LCD touch screen monitor	✓	
Automatic bi-level air conditioner	✓	
Jog dial and shortcut keys for monitor control	✓	
Keyless push-to-start engine control	✓	
Tilt-up left-side console	✓	
Heated seat with air suspension (Deluxe cab)	✓	
Heated and ventilated seat with air suspension (Premium cab)	✓	
Fixed one-piece front window and skylight (P5A classified)		✓
Fixed two-piece front window and skylight (P8B classified)		✓
Operator Protective Guards (OPG)		✓

	Standard	Optional
<b>ENGINE</b>		
Cat® C7.1 diesel engine	✓	
Three selectable modes: Power, Smart, Eco	✓	
Up to 4500 m (14,760 ft) altitude capability with engine power derate above 3000 m (9,840 ft)	✓	
Cold start capability down to -18°C (0°F)	✓	
Up to 43°C (109°F) high-ambient cooling capacity with derate	✓	
Reversible electric cooling fans	✓	
Cold start, ether start (N Am and Aus-NZ only)	✓	
Cold start, block heater (N Am only)		✓
<b>CAT TECHNOLOGY</b>		
VisionLink™	✓	
Remote Flash and Remote Troubleshoot	✓	
Cat Payload	✓	
<b>ELECTRICAL SYSTEM</b>		
Maintenance-free battery	✓	
LED chassis light, left-hand/right-hand boom lights, cab lights – 1800 lumens	✓	
Centralized electrical disconnect switch	✓	
Programmable time delay LED working lights after engine shutdown	✓	
Generator, 20 kW (27 hp) with wiring to stick nose		✓

(continued on next page)



# STANDARD AND OPTIONAL EQUIPMENT *(continued)*

NOTE: Standard and optional equipment may vary. Consult your Cat dealer for details.

	Standard	Optional
<b>SERVICE AND MAINTENANCE</b>		
Grouped location for engine oil and fuel filters	✓	
Scheduled Oil Sampling (S-O-S <sup>SM</sup> ) ports	✓	
Automatic lubrication system for implement and swing system	✓	
<b>HYDRAULIC SYSTEM</b>		
Boom and stick lowering control check valves	✓	
Boom and stick regeneration circuits	✓	
Electronic main control valve	✓	
Automatic hydraulic oil warm up	✓	
Heavy lift mode	✓	

	Standard	Optional
<b>SAFETY AND SECURITY</b>		
Rear and right-hand-side view cameras	✓	
Caterpillar One Key Security System	✓	
Travel alarm	✓	
Ground-level accessible secondary engine shutoff switch in cab	✓	
Signal/warning horn	✓	
2D E-fence	✓	
Cab Avoidance	✓	
Swing Assist	✓	
Rear window emergency exit	✓	
360° visibility		✓

For more complete information on Cat products, dealer services and industry solutions, visit us on the web at [www.cat.com](http://www.cat.com).

© 2025 Caterpillar. All Rights Reserved.

Materials and specifications are subject to change without notice. Featured machines in photos may include additional equipment. See your Cat dealer for available options.

CAT, CATERPILLAR, LET'S DO THE WORK, VisionLink, their respective logos, "Caterpillar Corporate Yellow," the "Power Edge" and Cat "Modern Hex" trade dress as well as corporate and product identity used herein, are trademarks of Caterpillar and may not be used without permission.  
[www.cat.com](http://www.cat.com) [www.caterpillar.com](http://www.caterpillar.com)

AEXQ4202-01 (12-2025)  
Replaces AEXQ4202-00  
Build Number: 07E  
(Aus-NZ, Europe,  
Japan, N Am,  
S Am, Türkiye)

