



395

Hydraulic Excavator

Technical Specifications

Configurations and features may vary by region. Please consult your Cat® dealer for availability in your area.

Table of Contents

Specifications	2
Engine	2
Swing Mechanism	2
Weights	2
Track	2
Drive	2
Hydraulic System	2
Service Refill Capacities	2
Standards	3
Sound Performance	3
Air Conditioning System	3
Operating Weights and Ground Pressures	3
Major Component Weights	4
Dimensions	5
Working Ranges	7
Typical Pass Match Guide	8
Bucket Specifications and Compatibility	9
Standard and Optional Equipment	10
Dealer Installed Kits and Attachments	11
Cab Options	12
395 Environmental Declaration	13

395 Hydraulic Excavator Specifications

Engine

Engine Model	Cat® C18	
Net Power		
ISO 9249	404.4 kW	542 hp
ISO 9249 (DIN)	550 hp (metric)	
Engine Power		
ISO 14396	405.0 kW	543 hp
ISO 14396 (DIN)	551 hp (metric)	
Bore	145 mm	6 in
Stroke	183 mm	7 in
Displacement	18.1 L	1105 in ³
Biodiesel capability	Up to B20 ⁽¹⁾	

- Meets U.S. EPA Tier 4 Final, EU Stage V, Korea Stage V, and Japan 2014 emission standards.
- Recommended for use up to 4500 m (14,770 ft) altitude with engine power derate above 3000 m (9,840 ft).
- Advertised power is tested per the specified standard in effect at the time of manufacture.
- Net power advertised is the power available at the flywheel when the engine is equipped with fan, air intake system, exhaust system and alternator.
- Engine speed at 1,900 rpm.

⁽¹⁾Cat diesel engines are required to use ULSD (ultra-low sulfur diesel fuel with 15 ppm of sulfur or less) and are compatible* with ULSD blended with the following lower-carbon intensity fuels** up to:

- ✓ 20% biodiesel FAME (fatty acid methyl ester) ***
- ✓ 100% renewable diesel, HVO (hydrotreated vegetable oil) and GTL (gas-to-liquid) fuels

Refer to guidelines for successful application. Please consult your Cat dealer or “Caterpillar Machine Fluids Recommendations” (SEBU6250) for details.

* While Cat engines are compatible with these alternative fuels, some regions may not allow their use.

** Tailpipe greenhouse gas emissions from lower-carbon intensity fuels are essentially the same as traditional fuels.

*** Engines with no aftertreatment devices are compatible with higher blends, up to 100% biodiesel (for use of blends higher than 20% biodiesel, consult your Cat dealer).

Swing Mechanism

Swing Speed*	5.64 rpm	
Maximum Swing Torque	362 kN·m	267,000 lb·ft

*For CE-marked machine default value may be set lower.

Weights

Major Configuration 1	96 300 kg	212,300 lb
-----------------------	-----------	------------

- Standard variable gauge undercarriage, 4.6 m (15 ft 9 in) Front Shovel (FS) Boom, 3.48 m (11 ft 5 in) FS Stick, 6.5 m³ (8.5 yd³) FS bucket, 650 mm (26 in) double grouser shoes, 15 450 kg (34,060 lb) counterweight.

Track

Track Shoes Width	650 mm	26 in
Number of Shoes (each side)	47	
Number of Track Rollers (each side)	8	
Number of Carrier Rollers (each side)	3	

Drive

Gradeability	35°/70%	
Maximum Travel Speed	4.6 km/h	2.9 mph
Maximum Drawbar Pull	583 kN	131,064 lbf

Hydraulic System

Main System – Maximum Flow – Implement	1,008 L/min (504 × 2 pumps)	266 gal/min (133 × 2 pumps)
Swing System – Maximum Flow	279 L/min	74 gal/min
Maximum Pressure – Equipment – Implement	32 000 kPa	4,641 psi
Maximum Pressure – Travel	35 000 kPa	5,076 psi
Maximum Pressure – Swing	31 000 kPa	4,496 psi
Boom Cylinder – Bore	180 mm	7 in
Boom Cylinder – Stroke	1415 mm	56 in
Stick Cylinder – Bore	220 mm	9 in
Stick Cylinder – Stroke	1855 mm	73 in
Bucket Cylinder – Bore	180 mm	7 in
Bucket Cylinder – Stroke	1810 mm	71 in
Master Cylinder – Bore	160 mm	6 in
Master Cylinder – Stroke	1938 mm	76 in

Service Refill Capacities

Fuel Tank Capacity	1220 L	322.3 gal
Cooling System	71.0 L	18.8 gal
Engine Oil (with filter)	67.0 L	17.7 gal
Swing Drive	12.0 L	3.2 gal
Final Drive (each)	20.0 L	5.3 gal
Hydraulic System (including tank)	740.0 L	195.5 gal
Hydraulic Tank (including suction pipe)	432.0 L	114.1 gal
Diesel Exhaust Fluid (DEF) Tank	80.0 L	21.1 gal

395 Hydraulic Excavator Specifications

Standards

Brakes	ISO 10265: 2008
Cab/Operator Protective Guards (OPG) (optional)	ISO 10262: 1998 Level II

Sound Performance

ISO 6395:2008 (external)	109 dB(A)
ISO 6396:2008 (inside cab)	73 dB(A)
<ul style="list-style-type: none"> • External Sound – The labeled spectator sound power level represents the Guaranteed Value per 2000/14/EC, when properly equipped, and is measured according to the test procedures and conditions specified in ISO 6395:2008. The measurements were conducted at 70% of the maximum engine cooling fan speed. • Internal Sound – The operator sound pressure level is measured according to the test procedures and conditions specified in ISO 6396:2008 for a cab offered by Caterpillar, when properly installed and maintained and tested with the door and windows closed. The measurements were conducted at 70% of the maximum engine cooling fan speed. • Hearing protection may be needed when operating with an open operator station and cab (when not properly maintained for doors/windows open) for extended periods or in noisy environment(s). 	

Air Conditioning System

- The air conditioning system on this machine contains the fluorinated greenhouse gas refrigerant R134a (Global Warming Potential = 1430). The system contains 1.00 (2.20) kg of refrigerant which has a CO₂ equivalent 1.430 (1.58 tons) metric tonne.
 - If equipped with R1234yf (Global Warming Potential = 0.501), the system contains 1.16 kg (2.56 lb) of refrigerant which has a CO₂ equivalent of 0.001 metric tonnes (0.001 tons).

Operating Weights and Ground Pressures

Base Machine Configurations	650 mm (26") Double Grouser Shoes	
	Weight	Ground Pressure
	kg (lb)	kPa (psi)
Base Frame with Track Rollers and Carrier Rollers		
15.4 mt (34,060 lb) Counterweight and Standard Variable Gauge Undercarriage Base Machine		
4.6 m (15 ft 9 in) Front Shovel (FS) Boom + 3.48 m (11 ft 5 in) FS Stick + 6.5 m ³ (8.5 yd ³) FS bucket	95 300 (210,100)	150.0 (21.8)

All operating weights include a 90% fuel tank with 75 kg (165 lb) operator.

395 Hydraulic Excavator Specifications

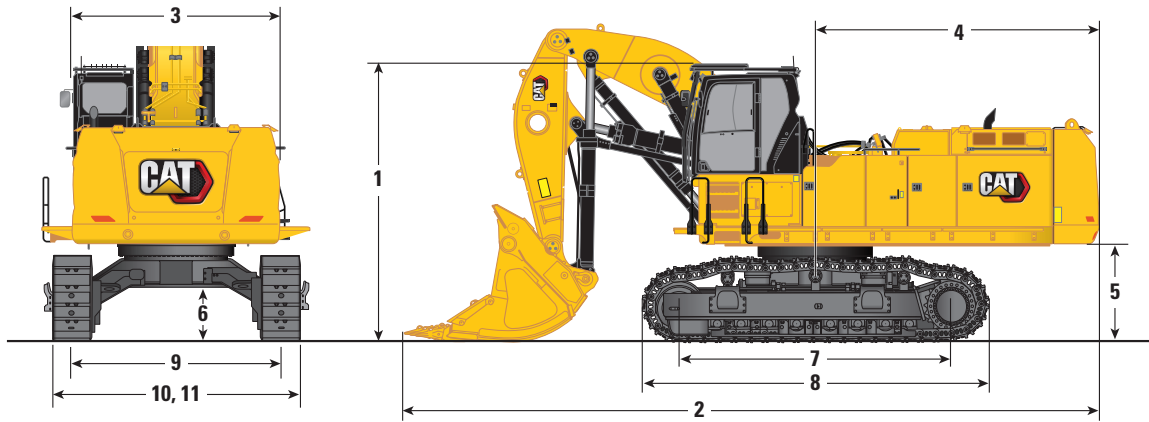
Major Component Weights

	kg	lb
Base Machine Weight with 15.4 mt (34,060 lb) standard counterweight, swing frame, base frame, standard variable gauge undercarriage with track rollers, carrier rollers and two boom cylinders – does not include boom, stick, bucket, stick cylinder, bucket cylinder, tracks, 90% fuel tank and 75 kg [165 lb] operator).	64 320	141,810
Track Shoes:		
650 mm (26") Width, 20.5 mm (0.8") Thick, Double Grouser Track Shoes	8660	19,100
Two Boom Cylinders	1080	2,380
Weight of 90% Fuel Tank and 75 kg (165 lb) Operator	1020	2,260
Counterweight:		
Standard Counterweight	15 450	34,060
Swing Frame	10 420	22,970
Undercarriage:		
Base Frame with Track Rollers and Carrier Rollers for Standard Variable Gauge Undercarriage	14 760	32,550
Boom (including lines, pins, stick cylinder):		
Front Shovel (FS) 4.6 m (15' 9")	7180	15,830
Stick (including lines, pins, bucket cylinder, bucket linkage):		
Front Shovel (FS) 3.48 m (11'5")	3140	6,910
Buckets (without linkage):		
5.2 m ³ (6.8 yd ³) Heavy Duty (HD)	10 680	23,540
6.5 m ³ (8.5 yd ³) FS	10 930	24,100

395 Hydraulic Excavator Specifications

Dimensions

All dimensions are approximate and may vary depending on bucket selection.



Boom Option

Front Shovel (FS) Boom
4.6 m (15'09")

Stick Option

Front Shovel (FS) Stick
3.48 m (11'5")

1 Machine Height:

Top of Cab Height	4530 mm	14'10"
Top of OPG Height	4680 mm	15'4"
Guardrails/Handrail Height	3370 mm	11'1"

2 Machine Length:

With Boom/Stick/Bucket Installed	14 640 mm	48'0"
With Boom Installed	9830 mm	32'3"

3 Upperframe Width:

Without Walkways	3490 mm	11'5"
With Walkways	4510 mm	14'10"
Walkways Width	500 mm	1'8"

4 Tail Swing Radius

4840 mm 15'11"

5 Counterweight Clearance (without shoe lug)

1640 mm 5'5"

6 Ground Clearance (without shoe lug)

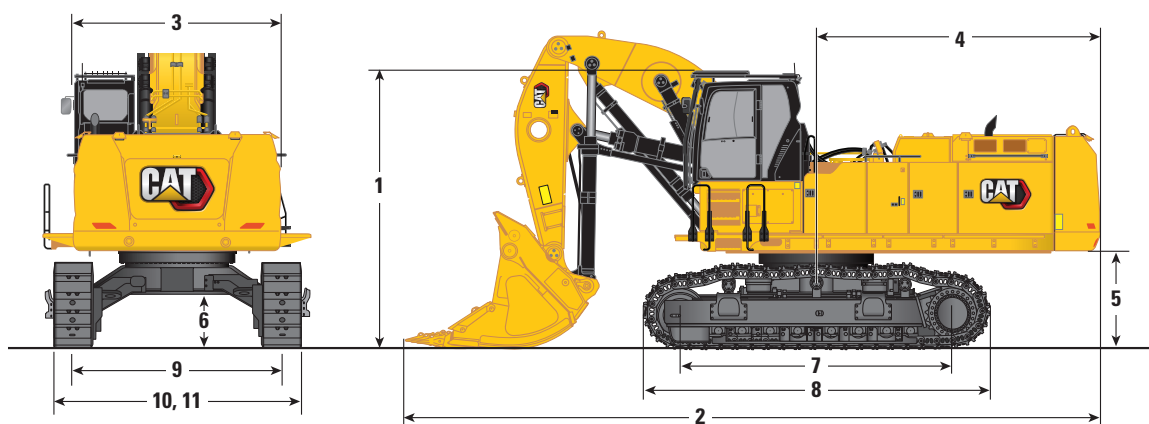
895 mm 2'11"

(continued on next page)

395 Hydraulic Excavator Specifications

Dimensions (continued)

All dimensions are approximate and may vary depending on bucket selection.

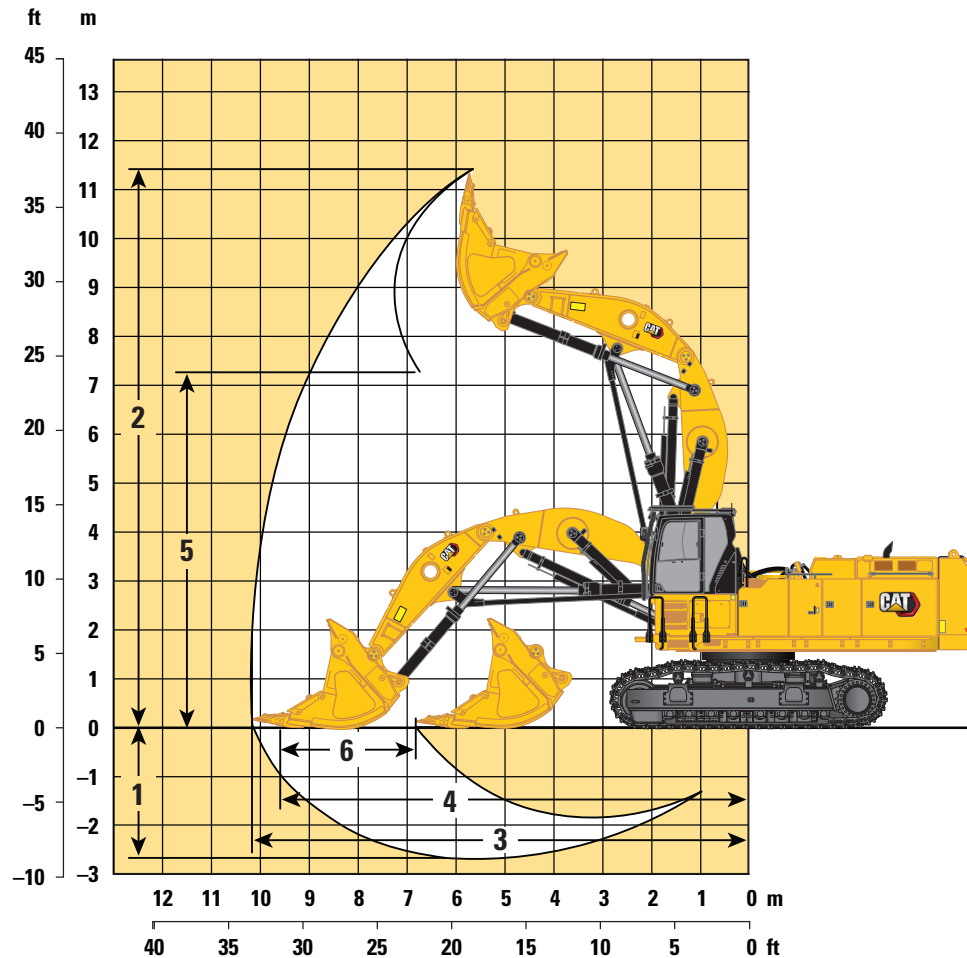


Boom Option		Front Shovel (FS) Boom 4.6 m (15'09")	
Stick Option		Front Shovel (FS) Stick 3.48 m (11'5")	
7 Track Length – Length to Center of Rollers		4590 mm	15'1"
8 Track Length		5830 mm	19'2"
9 Track Gauge:			
Retracted with 650 mm (26") Double Grouser Shoes		2750 mm	9'0"
Extended with 650 mm (26") Double Grouser Shoes		3510 mm	11'6"
10 Undercarriage Width – Retracted (without steps):			
650 mm (26") Shoes		3400 mm	11'2"
Undercarriage Width – Retracted (with steps):			
650 mm (26") Shoes		4160 mm	13'8"
11 Undercarriage Width – Extended (without steps):			
650 mm (26") Shoes		3690 mm	12'1"
Undercarriage Width – Extended (with steps):			
650 mm (26") Shoes		4450 mm	14'7"
Bucket Type		Heavy Duty (HD)	
Bucket Capacity		5.2 m ³	6.80 yd ³
Bucket Tip Radius		2610 mm	8'6"
Bucket Type		Front Shovel (FS)	
Bucket Capacity		6.5 m ³	8.50 yd ³
Bucket Tip Radius		2910 mm	9'6"

395 Hydraulic Excavator Specifications

Working Ranges

All dimensions are approximate and may vary depending on bucket selection.



Boom Option		Front Shovel (FS) Boom 4.6 m (15'09")			
Stick Options		Front Shovel (FS) Stick 3.48 m (11'5")			
1	Maximum Digging Depth	2610 mm	8'7"	2930 mm	9'7"
2	Maximum Digging Height	11 070 mm	36'4"	11 380 mm	37'4"
3	Maximum Digging Reach	10 140 mm	33'3"	10 470 mm	34'4"
4	Maximum Digging Reach at Ground Level	9680 mm	31'9"	10 010 mm	32'10"
5	Maximum Dump Height	7270 mm	23'10"	7270 mm	23'10"
6	Crowd Distance on Level	3920 mm	12'10"	3920 mm	12'10"
Bucket Digging Force (ISO)		582 kN	130,840 lbf	514 kN	115,550 lbf
Stick Digging Force (ISO)		494 kN	111,060 lbf	474 kN	106,560 lbf
Bucket Type		Heavy Duty (HD)		Front Shovel (FS)	
Bucket Capacity		5.20 m ³	6.80 yd ³	6.50 m ³	8.50 yd ³
Bucket Tip Radius		2600 mm	8'6"	2910 mm	9'7"

395 Hydraulic Excavator Specifications

Typical Pass Match Guide

For maximum production and efficiency, we recommend that loading and hauling machines are matched to achieve optimal performance.

Configuration:*

Standard variable gauge undercarriage, 4.6 m (15 ft 9 in) Front Shovel (FS) Boom, 3.48 m (11 ft 5 in) FS Stick, 6.5 m³ (8.5 yd³) FS bucket, 650 mm (26 in) double grouser shoes, 15 450 kg (34,060 lb) counterweight

Passes Required to Fill Trucks to Rated Capacity

Material Type	Material Density	Cat Articulated Trucks				Cat Off-Highway Trucks					
		735	740 GC	740 EJ	745	770G	772G	773E	773G	775G	777G
Earth	1600 kg/m ³ (2,700 lb/yd ³)		3-4		4	3-4	4-5	5-6	5-6	6	9
Limestone	1540 kg/m ³ (2,600 lb/yd ³)	3-4	4-5	4	4-5	4-5	5	6	6	7	10

* The indicated pass match reflects the machine configuration, fill factor, and typical material density shown. Changes to machine configurations, fill factors, or material density as well as jobsite-specific factors may influence exact pass match recommendations for your application. Consult your Cat dealer for more information.

Configuration:*

Standard variable gauge undercarriage, 4.6 m (15 ft 9 in) Front Shovel (FS) Boom, 3.48 m (11 ft 5 in) FS Stick, 5.2 m³ (6.8 yd³) Heavy Duty (HD) bucket, 650 mm (26 in) double grouser shoes, 15 450 kg (34,060 lb) counterweight

Passes Required to Fill Trucks to Rated Capacity

Material Type	Material Density	Cat Articulated Trucks						Cat Off-Highway Trucks					
		730 EJ	730	735	740 GC	740 EJ	745	770G	772G	773E	773G	775G	777G
Earth	1600 kg/m ³ (2,700 lb/yd ³)			4	4-5	4-5	5	4-5	5-6	7	6-7	8	11
Limestone	1540 kg/m ³ (2,600 lb/yd ³)	4	3-4	4-5	5-6	5	5-6	5-6	6-7	8	8	9	12

* The indicated pass match reflects the machine configuration, fill factor, and typical material density shown. Changes to machine configurations, fill factors, or material density as well as jobsite-specific factors may influence exact pass match recommendations for your application. Consult your Cat dealer for more information.

395 Hydraulic Excavator Specifications

Bucket Specifications and Compatibility

	Linkage*							Fill	Standard Variable Gauge Undercarriage	
									15,450 kg (34,060 lb) counterweight	
		4.6 m (15'09") Front Shovel (FS) Boom								
		3.48 m (11'42") Front Shovel (FS) Stick								
Pin-On (No Quick Coupler)										
Heavy Duty (HD)	—	2726	107	5.20	6.80	10 249	22,594	90	●	
Front Shovel (FS)	—	2726	107	6.50	8.50	10 501	23,150	90	●	
Maximum load with pin-on (payload + bucket)								kg	23 135	
								lb	51,004	

The above loads are in compliance with hydraulic excavator standard EN474-5:2022/AC:2022, they do not exceed 87% of hydraulic lifting capacity or 75% of tipping capacity with front linkage fully extended at ground line with bucket curled.

Capacity based on ISO 7451:2007.

*Buckets directly attach to the cylinder and stick.

Maximum Material Density:

● 2100 kg/m³ (3,500 lb/yd³)

Caterpillar recommends using appropriate work tools to maximize the value customers receive from our products. Use of work tools, including buckets, which are outside of Caterpillar's recommendations or specifications for weight, dimensions, flows, pressures, etc. may result in less-than-optimal performance, including but not limited to reductions in production, stability, reliability, and component durability. Improper use of a work tool resulting in sweeping, prying, twisting and/or catching of heavy loads will reduce the life of the boom and stick.

395 Standard and Optional Equipment

Standard and Optional Equipment

Standard and optional equipment may vary. Consult your Cat® dealer for details.

	Standard	Optional		Standard	Optional
BOOMS, STICKS AND LINKAGES			SAFETY AND SECURITY		
4.6 m (15 ft 9 in) Front Shovel (FS) Boom	✓		Caterpillar One Key security system	✓	
3.48 m (11 ft 42 in) FS Stick	✓		Lockable external tool/storage box	✓	
CAT TECHNOLOGY			Lockable door, fuel, and hydraulic tank locks	✓	
Cat Equipment Management:			Lockable fuel drain compartment	✓	
– VisionLink™	✓ ¹		Lockable disconnect switch	✓	
– Remote Troubleshoot	✓		Service platforms with anti-skid plate	✓	
ELECTRICAL SYSTEM			Full handrail mount on platform		
Maintenance-free 1,400 CCA batteries	✓		Mirror package	✓	
Centralized electrical disconnect switch	✓		Signaling/warning horn	✓	
Chassis light	✓		Travel alarm	✓	
LED boom and cab lights	✓		Swing alarm		✓
1,800 lumen LED premium surround lights	✓		Ground-level secondary engine shutoff switch	✓	
ENGINE			Rearview and right-side-view cameras	✓	
Three selectable modes: Power, Smart, Eco	✓		360° visibility	✓	
Up to 4500 m (14,760 ft) altitude capability	✓		Inspection lighting	✓	
Automatic engine speed control	✓		Walkway	✓	
95 Amp alternator	✓		SERVICE AND MAINTENANCE		
Remote disable	✓		Integrated vehicle health management system	✓	
Double element air filter with integrated pre-cleaner	✓		Auto lube ready	✓	
Hydraulic reverse cooling fan	✓		Reversing cooling fan	✓	
Three vertical side-by-side cooling system	✓		Grouped location for engine oil and fuel filters	✓	
52° C (126° F) high-ambient cooling capacity	✓		Fast-fill fuel system	✓	
Cold start block heaters	✓		S·O·S SM ports	✓	
–32° C (–25° F) cold start capability	✓		QuickEvac™ maintenance ready	✓	
HYDRAULIC SYSTEM			Electric refueling pump with auto shutoff	✓	
Boom and stick regeneration circuits	✓		UNDERCARRIAGE AND STRUCTURES		
Electronic main control valve	✓		Standard variable gauge undercarriage	✓	
Dedicated closed loop swing circuit	✓		650 mm (26") double grouser track shoes	✓	
Automatic hydraulic oil warmup	✓		Grease lubricated track	✓	
Automatic swing parking brake	✓		Two-piece full-length track guiding guards	✓	
Anti-reaction valve	✓		Swivel guard	✓	
High performance hydraulic return filter	✓		HD bottom guards	✓	
Two speed travel	✓		HD travel motor guards	✓	
Bio hydraulic oil capability	✓		15 450 kg (34,060 lb) counterweight	✓	
			Towing eye on base frame	✓	

¹Provides core telematics data to manage health, maintenance insights, and condition monitoring. Other plans available for more comprehensive data reporting. Consult your Cat dealer for details.

Dealer Installed Kits and Attachments

Attachments may vary. Consult your Cat dealer for details.

CAB

- Joystick with horizontal sliders
- Left Hand (LH)/Right Hand (RH) electrical pedal for tool control
- Dual exit rear window kit
- Front windshield laminated glass (P5A glass, EU demolition regulation)

SAFETY AND SECURITY

- Bluetooth® key fob
- 76 mm (3") retractable seat belt

GUARDS

- OPG (not compatible with cab light cover, rain protector)
- Mesh guard full front (not compatible with cab light cover, rain protector)
- Mesh guard lower half front
- Rain protector for front windshield plus cab light cover

395 Cab Options

Cab Options

	Premium
Premium Next Generation Excavator Cab on 889 mm (35") Fixed Riser without Tilt	●
Sound suppressed with viscous mounts	●
Operator Protective Guards (OPG)	○
High-resolution 254 mm (10") LCD touchscreen monitor	●
Auto bi-level air conditioner	●
Jog dial and shortcut keys for monitor control	●
Keyless push-to-start engine control	●
Console with seven-position engine control	●
Height-adjustable console	●
Tilt-up left-side console	●
Heated and ventilated air-suspension seat	●
1-Slider Joystick for Ease of Use (EOU)	○
2-Slider joystick for TRS	○
51 mm (2") seat belt – Retractable – Orange	●
Bluetooth integrated radio (including USB, auxiliary port and microphone)	●
24V DC outlet	●
Document storage	●
Console storage	●
Overhead storage and rear storage with nets	●
Beverage holder	●
Cup holder	●
Openable two-piece front window	○
One piece front windshield	●
Rear window emergency exit	●
Parallel wiper	●
Laminated roof glass	●
LED dome light	●
Floor welcome light	●
Roof cover pad	●
Roller front sunscreen	●
Roller rear sunscreen	●
Washable floor mat	●
Beacon ready	●
Cat Stick Steer	○
Bluetooth secure start/Attachment locator reader	●

● Standard

○ Optional

X Not available

The following information applies to the machine at the time of final manufacture as configured for sale in the regions covered in this document. The content of this declaration is valid as of the date issued; however, content related to machine features and specifications are subject to change without notice. For additional information, please see the machine's Operation and Maintenance Manual.

For more information on sustainability in action and our progress, please visit <https://www.caterpillar.com/en/company/sustainability>.

Engine

- Meets U.S. EPA Tier 4 Final, EU Stage V, Korea Stage V, and Japan 2014 emission standards.
- Cat® diesel engines are required to use ULSD (ultra-low sulfur diesel fuel with 15 ppm of sulfur or less) and are compatible* with ULSD blended with the following lower-carbon intensity fuels** up to:
 - ✓ 20% biodiesel FAME (fatty acid methyl ester) ***
 - ✓ 100% renewable diesel, HVO (hydrotreated vegetable oil) and GTL (gas-to-liquid) fuels

Refer to guidelines for successful application. Please consult your Cat dealer or "Caterpillar Machine Fluids Recommendations" (SEBU6250) for details.

* While Cat engines are compatible with these alternative fuels, some regions may not allow their use.

** Tailpipe greenhouse gas emissions from lower-carbon intensity fuels are essentially the same as traditional fuels.

*** Engines with no aftertreatment devices are compatible with higher blends, up to 100% biodiesel (for use of blends higher than 20% biodiesel, consult your Cat dealer).

Air Conditioning System

- The air conditioning system on this machine contains the fluorinated greenhouse gas refrigerant R134a (Global Warming Potential = 1430). The system contains 1.00 (2.20) kg of refrigerant which has a CO₂ equivalent 1.430 (1.58 tons) metric tonne.
 - If equipped with R1234yf (Global Warming Potential = 0.501), the system contains 1.16 kg (2.56 lb) of refrigerant which has a CO₂ equivalent of 0.001 metric tonnes (0.001 tons).

Paint

- Based on best available knowledge, the maximum allowable concentration, measured in parts per million (PPM), of the following heavy metals in paint are:
 - Barium < 0.01%
 - Cadmium < 0.01%
 - Chromium < 0.01%
 - Lead < 0.01%

Sound Performance

ISO 6395:2008 (external) – 109 dB(A)

ISO 6396:2008 (inside cab) – 73 dB(A)

- External Sound – The labeled spectator sound power level represents the Guaranteed Value per 2000/14/EC, when properly equipped, and is measured according to the test procedures and conditions specified in ISO 6395:2008. The measurements were conducted at 70% of the maximum engine cooling fan speed.
- Internal Sound – The operator sound pressure level is measured according to the test procedures and conditions specified in ISO 6396:2008 for a cab offered by Caterpillar, when properly installed and maintained and tested with the door and windows closed. The measurements were conducted at 70% of the maximum engine cooling fan speed.
- Hearing protection may be needed when operating with an open operator station and cab (when not properly maintained for doors/windows open) for extended periods or in noisy environment(s).

Oils and Fluids

- Caterpillar factory fills with ethylene glycol coolants. Cat Diesel Engine Antifreeze/Coolant (DEAC) and Cat Extended Life Coolant (ELC) can be recycled. Consult your Cat dealer for more information.
- Cat Bio HYDO™ Advanced is an EU Ecolabel approved biodegradable hydraulic oil.
- Additional fluids are likely to be present, please consult the Operations and Maintenance Manual or the Application and Installation guide for complete fluid recommendations and maintenance intervals.

Features and Technology

- The following features and technology may contribute to fuel savings and/or carbon reduction. Features may vary. Consult your Cat dealer for details.
 - Advanced hydraulic systems balance power and efficiency
 - Smart mode matches machine power to digging requirements automatically
 - Eco mode supports reduced fuel consumption for light applications
 - One-touch low idle with automatic engine speed control
 - Extended service intervals help decrease maintenance costs

For more complete information on Cat products, dealer services, and industry solutions, visit us on the web at www.cat.com

© 2025 Caterpillar
All rights reserved

Materials and specifications are subject to change without notice. Featured machines in photos may include additional equipment. See your Cat dealer for available options.

CAT, CATERPILLAR, LET'S DO THE WORK, VisionLink, their respective logos, "Caterpillar Corporate Yellow," the "Power Edge" and Cat "Modern Hex" trade dress as well as corporate and product identity used herein, are trademarks of Caterpillar and may not be used without permission.

AEXQ4197-02 (12-2025)
Replaces: AEXQ4197-01
Build Number: 07D
(Europe)

