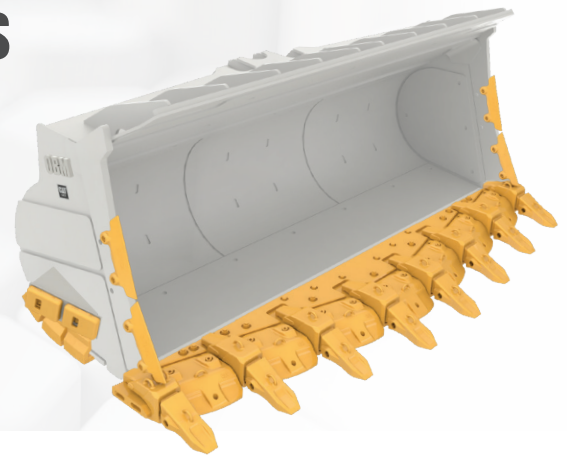
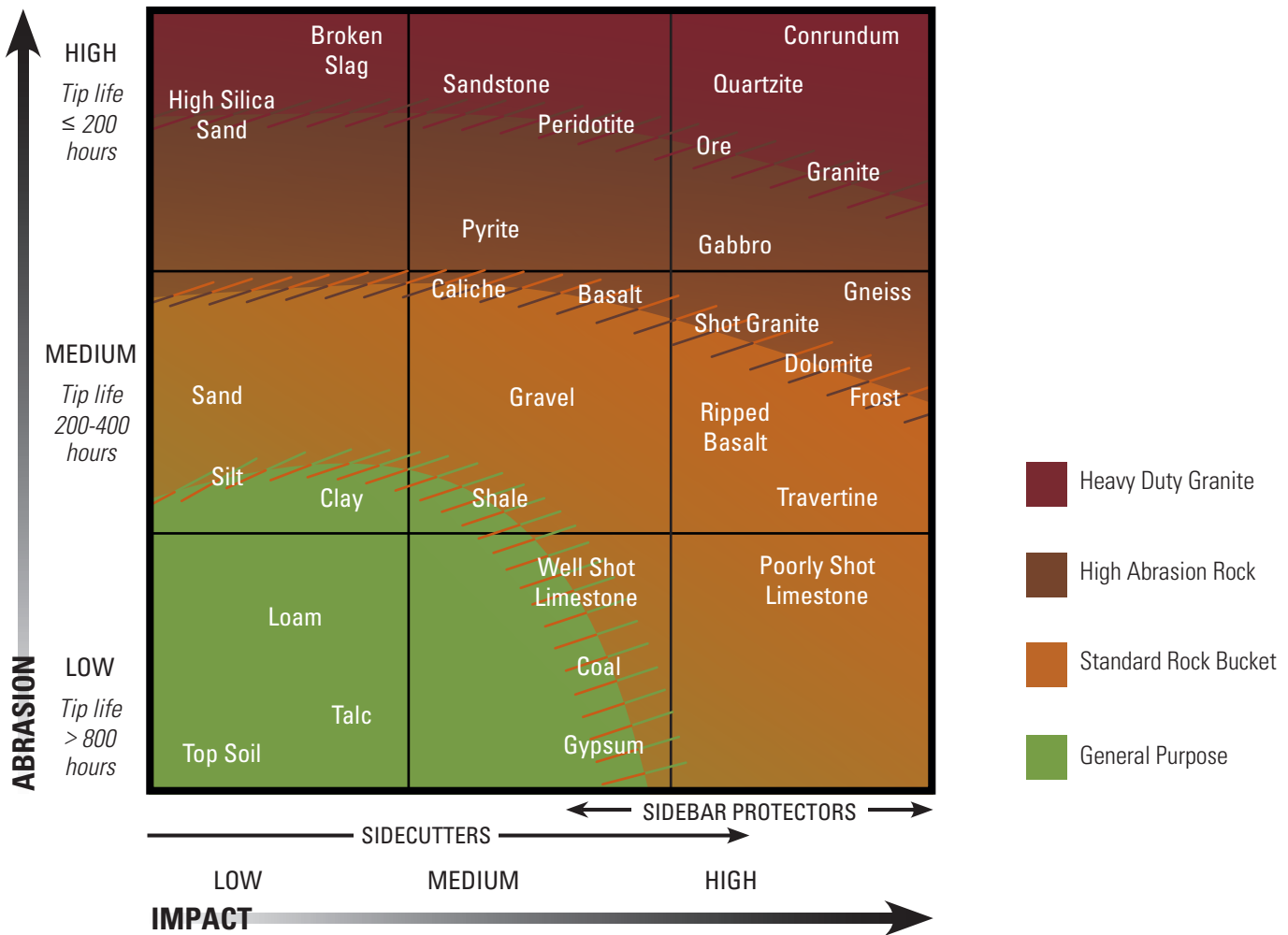


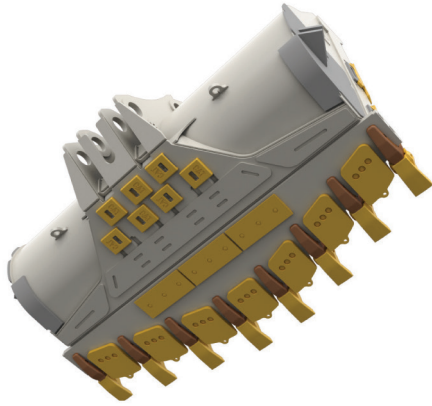
CAT® GROUND ENGAGING TOOLS (GET) OPTIONS WHEEL LOADER BUCKET REBUILDS

Extend bucket life and reduce total owning and operating costs by equipping your bucket with Cat® GET. Use this configuration guide to determine if your bucket's current configuration is matched to the abrasion and impact level of your application by reviewing the images and durability guidelines. Explore the guide below to help match the application of your bucket with the GET configuration designed to help extend your bucket service life and performance, and improve lifecycle costs. Lifecycle costs are improved by properly configuring a bucket with application-matched GET products.



CONFIGURE TO YOUR JOBSITE

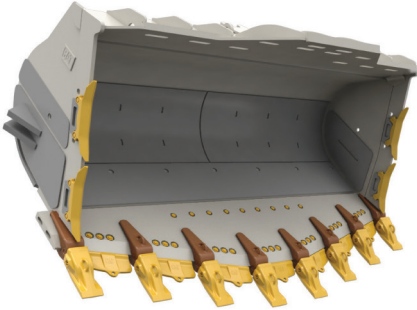






STANDARD ROCK BUCKET COMPLETE DIGGING

Standard Rock bucket configurations are for use in applications such as face loading limestone and other unprocessed rock and in truck and hopper loading for a wide range of quarry materials.

- Intended for use in moderate-to high-abrasion applications.
- Balances the need for high production in more abrasive applications.

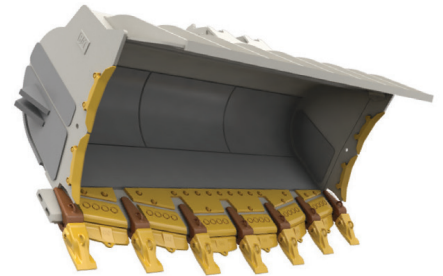




	988-994 WHEEL LOADERS IMPACT (material size)	950-982 WHEEL LOADERS IMPACT (material size)	950-994 WHEEL LOADERS ABRASION (tip life)
LOW	 0-6" 0-152 mm	 0-4" 0-102 mm	> 1,000 hours

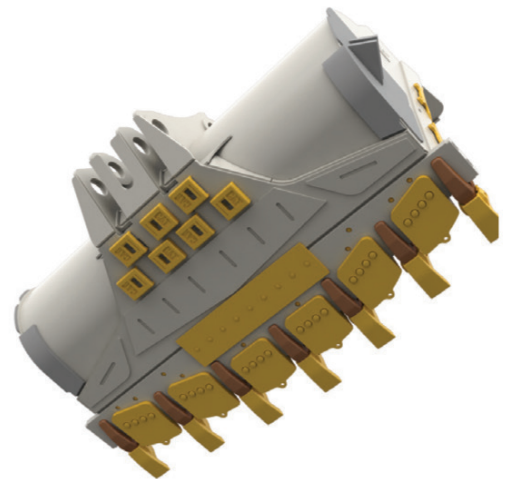
HIGH ABRASION DYNAMIC EXCAVATION

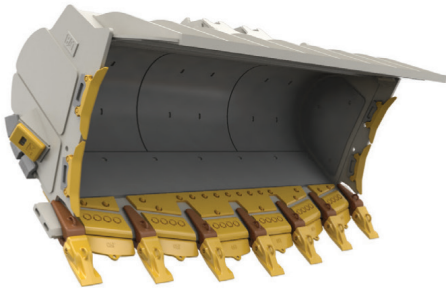
High Abrasion is for use in extremely aggressive applications such as face loading iron ore. It is intended for use in materials where high abrasion and moderate impact is encountered and a smooth floor is desired.

- Wear and liner packages help to protect the integrity of the shell.
- Side bar protectors are designed to protect the core structure of the bucket, which reduces rebuild time and cost.
- Weld-on heel shrouds are used to extend the bucket life cycle by protecting the welded seam on the corners.
- If tip life is less than 200 hours or damage to the inner or outer bucket shell is experienced, you may need to upgrade to Heavy Duty Granite configuration.



	988-994 WHEEL LOADERS IMPACT (material size)	950-982 WHEEL LOADERS IMPACT (material size)	950-994 WHEEL LOADERS ABRASION (tip life)
MEDIUM	 6-18" 152-457 mm	 4-12" 102-305 mm	250-1,000 hours

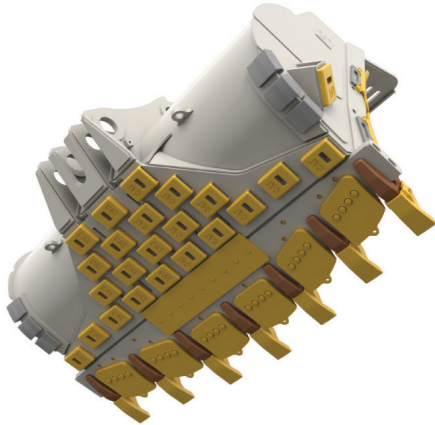






HEAVY DUTY GRANITE THE TOUGHEST BUCKET FOR YOUR TOUGHEST JOBS

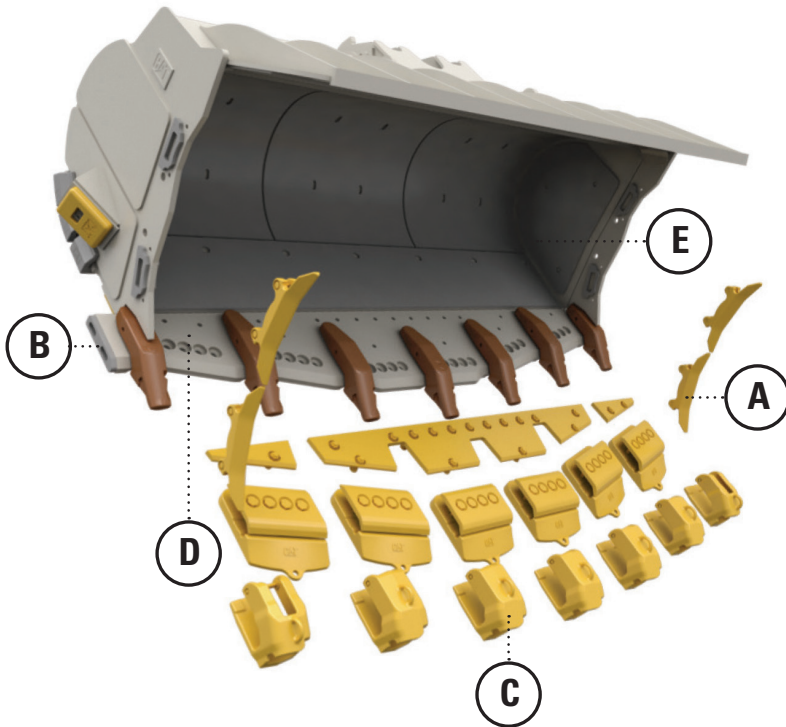
Your most intense excavation applications call for full protection to your bucket. Heavy Duty Granite configurations can include full base edge protection and mechanically attached wear plates (MAWPS).

- Configurations include high abrasion wear components for the most aggressive excavation and loading applications.
- The base edge can be protected by mechanically attached half arrows and top covers, which allows for quicker removal and installation.
- MAWPS change out within minutes, reducing rebuild costs and time.



	988-994 WHEEL LOADERS IMPACT (material size)	950-982 WHEEL LOADERS IMPACT (material size)	950-994 WHEEL LOADERS ABRASION (tip life)
HIGH			< 250 hours
	18" + 457 mm +	12" + 305 mm +	

CAT GET OPTIONS INCREASE BUCKET LIFE AND REDUCE OWNING AND OPERATING COST

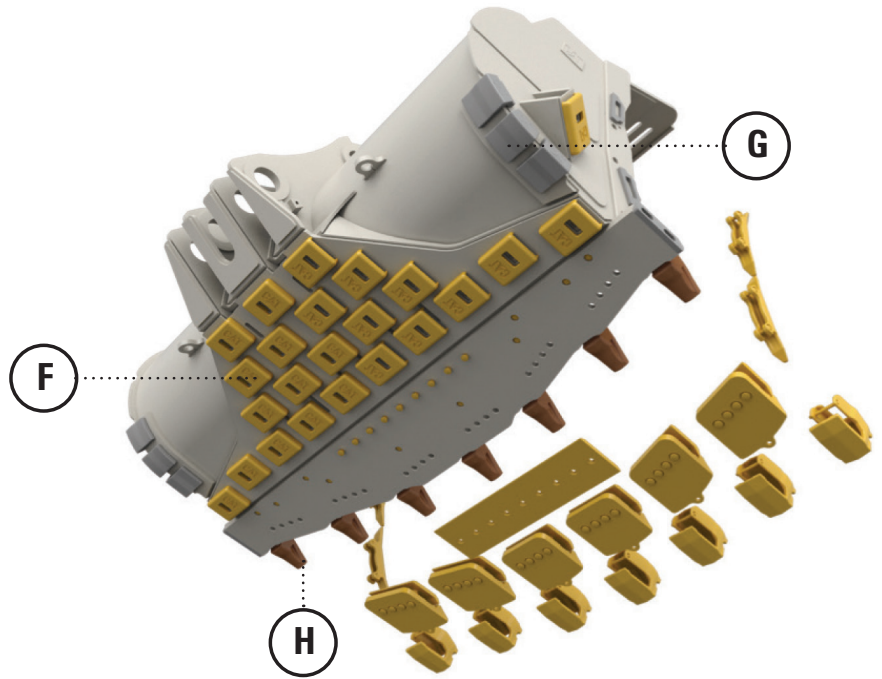


- A:** Adequate sidebar protection extends sidebar life and bucket capacity.
- B:** Reduce base-edge end wear and corner-adapter weld erosion with our Base Edge End Protectors (BEEP).
- C:** Top covers and half arrows extend base edge life.
- D:** The spade edge option will allow you to penetrate better into compacted or dense materials.
- E:** Bucket liner plates protect the shell from impact loads and abrasive wear.

F: Mechanically Attached Wear Plates (MAWPS) can reduce costs by 40% with significantly lower weld labor and replacement costs.

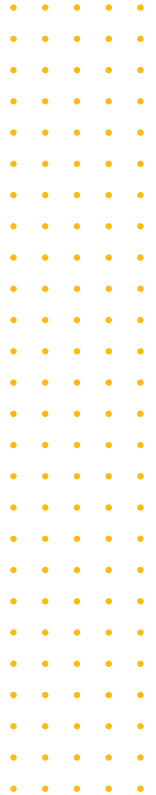
G: Weld-on heel shrouds are used to extend the bucket life cycle by protecting the welded seam on the corners.

H: Cat® Advansys™ tip and adapter system delivers integrated hammerless retention without a separate retainer.



Consult your Cat dealer for specific attachments available in your region.

**For more information, please reference the following materials:
GET Marketing catalog PEBJ0078, GET Parts Book with dimensions PEBJ0079,
Bucket Configurations for your HEX bucket PEBJ0140.**



PEDJ0430-01

© 2023 Caterpillar. All Rights Reserved. CAT, CATERPILLAR, LET'S DO THE WORK, their respective logos, "Caterpillar Corporate Yellow", the "Power Edge" and Cat "Modern Hex" trade dress as well as corporate and product identity used herein, are trademarks of Caterpillar and may not be used without permission.