

INDUSTRIAL BRUSHCUTTERS

SKID STEER LOADERS
COMPACT TRACK LOADERS
COMPACT WHEEL LOADERS



Models	Machine Compatibility
BRX118	255, 259D3, 260, 262D3, 265, 270, 272D3, 275, 279D3, 285, 289D3, 299D3, 906, 907, 908
BRX318	255, 259D3, 260, 262D3, 265, 270, 272D3, 275, 279D3, 285, 289D3, 299D3, 906, 907, 908
BRX418	270 XE, 272D3 XHP, 275 XE, 285 XE, 299D3 XE

Current machines listed. Machine model availability and attachment vary by region. Contact your local Cat® dealer for exact compatibility and availability.



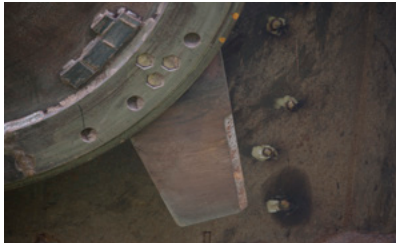
Cat® Industrial Brushcutters are designed for clearing brush, small trees, and dense vegetation in land management, utilities, site prep, and maintenance work applications. These machine and work tool combinations bring unparalleled speed and productivity for initial land clearing of housing, parks, and recreational areas and clearing overgrowth from utility easements and highway medians. The industrial brushcutter has been developed to withstand rugged clearing applications and provide cutting capability up to 200 mm (8 in) diameter material.

FEATURES



FULLY BALANCED BLADE CARRIER

Fully balanced blade carrier holds four equally spaced blades for superior rotational stability. Blade carrier weighing 409 kg (900 lb) provides unmatched blade inertia. High inertia energy allows blades to easily cut through dense brush.



HARDENED REVERSIBLE BLADES

Harden reversible blades provide aggressive cutting of material and deliver high performance and durability. Free swinging blades are attached to blade carrier via puck plates with three bolts that can easily be torqued from an access panel on the top of frame.



TUNED HYDRAULIC PERFORMANCE

The industrial brushcutter is designed to match with standard flow, high flow XPS, and high flow XE/XHP hydraulics. Each hydraulic platform optimizes recovery time and reduces heat load on the motor to work in high ambient temperature environments.



INTEGRATED ACCUMULATOR

On shutdown, the accumulator discharges oil to the motor as the blade carrier spins down. This ensures proper motor lubrication and reduces motor/cavitation noise as the blades/carrier comes to a stop.



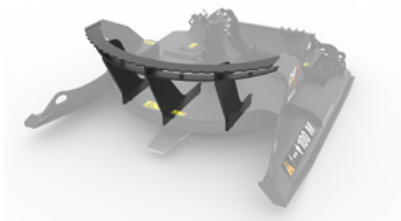
LONG LIFE MOTOR WITH ANTI-CAVITATION VALVE

Anti-cavitation valve protects vital motor components improving work tool life and ensuring optimal brushcutter performance.



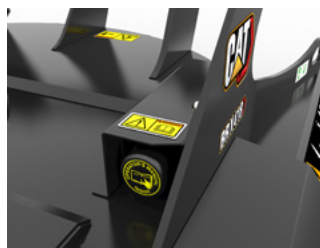
HEAVY DUTY SKIDS

Heavy-duty skids allow easy movement of brushcutter through uneven terrain while maintaining stability of the work tool and machine.



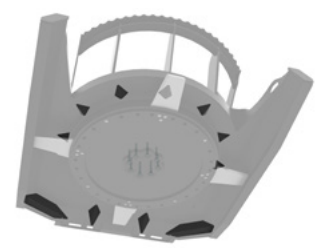
REINFORCED PUSH BAR

Control and guide foliage into blades. Robust design built from fully welded 19 mm (¾ in) thick vertical and dual 9.5 mm (⅜ in) thick horizontal structural plate steel.



OMM CONTAINER

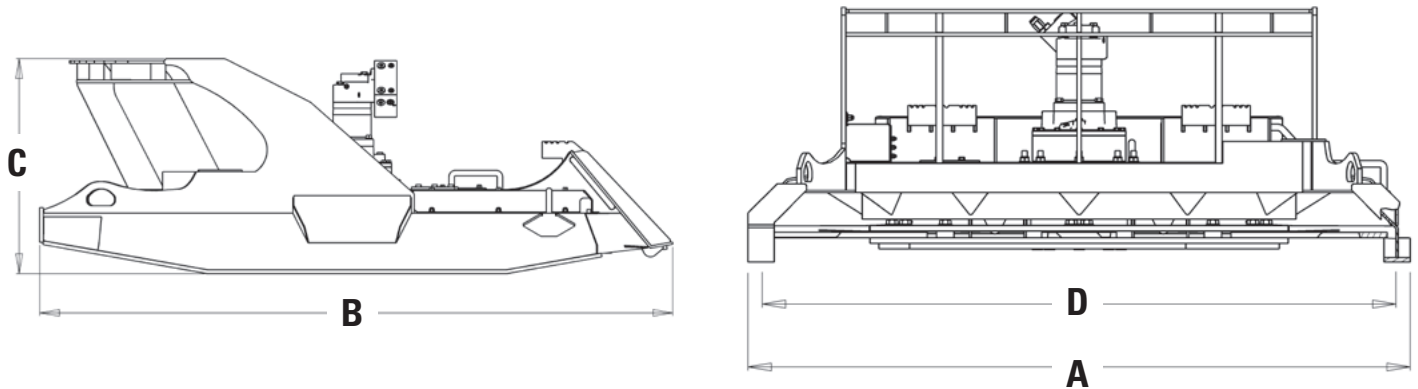
Tool-mounted and sealed from the elements, this container holds the Operation and Maintenance Manual (OMM) required for proper operation of the work tool.



RIGID FRAME/ HEAVY BEARING CASE

Reinforced corner gussets provide strength in critical areas and improve mulching action. Heavy duty bearing case secures blade carrier to the drive system with a series of eight bolts.

SPECIFICATIONS



Industrial Brushcutters			
Model	BRX118	BRX318	BRX418
A Overall Width – mm (in)	1911 (75.2)	1911 (75.2)	1911 (75.2)
B Overall Length – mm (in)	2170 (85.4)	2170 (85.4)	2170 (85.4)
C Overall Height – mm (in)	733 (28.9)	733 (28.9)	733 (28.9)
D Cutting Width – mm (in)	1829 (72)	1829 (72)	1829 (72)
Weight – kg (lb)	1072 (2,363.4)	1072 (2,363.4)	1072 (2,363.4)
Maximum Cutting Diameter – mm (in)	203 (8)	203 (8)	203 (8)
Tip Speed – mpm (fpm)	2436-2772 (7,992-9,094)	3180-3300 (10,433-10,827)	4020-4140 (13,189-13,583)
Drive Shaft Torque – N·m (lb·ft)	369-566 (272-417)	444-829 (327-611)	444-829 (327-611)
Optimal Hydraulic Flow – L/min (gpm)	76-87 (20-23)	120-125 (31-33)	150-155 (40-41)
Optimal Hydraulic Pressure – bar (psi)	200-230 (2,800-3,300)	200-280 (2,800-4,100)	200-280 (2,800-4,100)
Required Hydraulics	Standard Flow*	High Flow XPS	XHP/XE
Interface	Skid Steer Loader	Skid Steer Loader	Skid Steer Loader

*Standard flow without electrical.



STANDARD TWO-YEAR WARRANTY

All industrial brushcutters come standard with a two-year warranty to give you peace of mind when purchasing a quality Cat industrial brushcutter attachment.

For more complete information on Cat products, dealer services and industry solutions, visit us on the web at www.cat.com

AEHQ8517 (03-2025)
(Global)

© 2025 Caterpillar. All Rights Reserved.

Materials and specifications are subject to change without notice. Featured machines in photos may include additional equipment. See your Cat dealer for available options.

CAT, CATERPILLAR, LET'S DO THE WORK, their respective logos, "Caterpillar Corporate Yellow," the "Power Edge" and Cat "Modern Hex" trade dress as well as corporate and product identity used herein, are trademarks of Caterpillar and may not be used without permission.

www.cat.com www.caterpillar.com

