



OPTIONS AND ACCESSORIES KIT GUIDE FOR COMPACT TRACK AND SKID STEER LOADERS

COMPACT TRACK LOADER (CTL) MODELS: 255, 265, 275, 275 XE, 285, 285 XE
SKID STEER LOADER (SSL) MODELS: 250, 260, 270, 270 XE
SERIES: Next Generation



Option/Accessory.....Page Number

COMFORT AND CONVENIENCE.....3-8

Cab Monitor Mount Kit..... 3
 Cell Phone Mount Kit..... 3
 Front Door Kit..... 4
 Side Windows Kit and Window Seal Kit..... 4
 Heavy Duty Toolbox Kit 5
 Toolbox Manual Grease Gun and Mount Kit 5
 Toolbox Powered Grease Gun Mount Kit..... 6
 Toolbox Tool Organizer Kit..... 6
 Toolbox Tool Tray Kit 7
 Hydraulic Coupler Kit..... 7
 Premium Display and Joystick Kit..... 8

EMISSIONS AND REGULATIONS.....9-18

Front Rooding Lights Kit..... 9
 Rear Rooding Lights Kit..... 9
 Rear Rooding Lights Kit (Wide Extension) 10
 Rooding Conversion Kit..... 10
 Rooding License Plate Kit..... 11
GUARDING 12
 Compact Track Loader Drive Lines Guarding Kit..... 12
 Cylinder Guard Kit..... 13
 Debris Guarding Kit..... 13
 Engine Insulation Kit..... 14
 Turbocharger Guard Kit 14
 Falling Object Protection System
 Level 2 (FOPS Level 2) Kit..... 15
 Roof Mounted Attachments Bracket Kit..... 15
 Guarding Protection Kit..... 16
 Heavy Duty Rear Bumper Kit..... 16
 Rear Door Guard Kit..... 17
 HVAC Pre-Cleaner Guarding Kit..... 17
 Rear Window Guard Kit..... 18
 Rubber Rear Bumper Kit..... 18

MAINTENANCE IMPROVEMENT.....19-20

Engine Air Pre-Cleaner Kit..... 19
 Fuel Door Kit..... 19
 Powered HVAC Pre-Cleaner Kit 20
 Track Removal and Install Aid Kit..... 20

Option/Accessory.....Page Number

PERFORMANCE AND PRODUCTIVITY21-30

1-Speed to 2-Speed Software Enabled
 Attachment (SEA) Kit 21
 Four Point Lift Kit..... 21
 Single Point Lift Kit..... 22
 Auxiliary Hydraulic Cooler Kit..... 22
 Auxiliary Hose Guide Kit 23
 External Fuel Tanks Kit..... 23
 External Rear Counterweight Kit..... 24
 Internal Front Counterweight Kit..... 24
 Inertial Measurement Unit (IMU) Kit 25
 Jacket Water Heater/Block Heater Kit 25
 Non-Louvered Door Kit 26
 Product Link™ Elite PL 643 Kit 26
 Rear Auxiliary (Aux) Ready Kit..... 27
 Rear Winch Kit..... 27
 Reversing Fan Kit..... 28
 Ride Control Kit..... 28
 Screw to Connect Quick Disconnects Kit..... 29
 Self-Level Kit..... 29
 Standard Flow to High Flow SEA Kit..... 30
 Water Tank Kit 30

SAFETY AND VISIBILITY31-36

Seat Belt with Indicator Kit 31
 3-Point Seat Belt with Indicator Kit 31
 Seat Belt Indicator Beacon Kit..... 32
 Seat Belt Indicator Lights Kit 32
 Cab Fire Extinguisher Mount Kit..... 33
 Side Cameras Kit..... 33
 LED Side Lights Kit..... 34
 Warning Beacon Kit 34
 Warning Lights Kit..... 35
 Legend 35

Compatibility Matrix.....36

Roof Mounting System..... 36

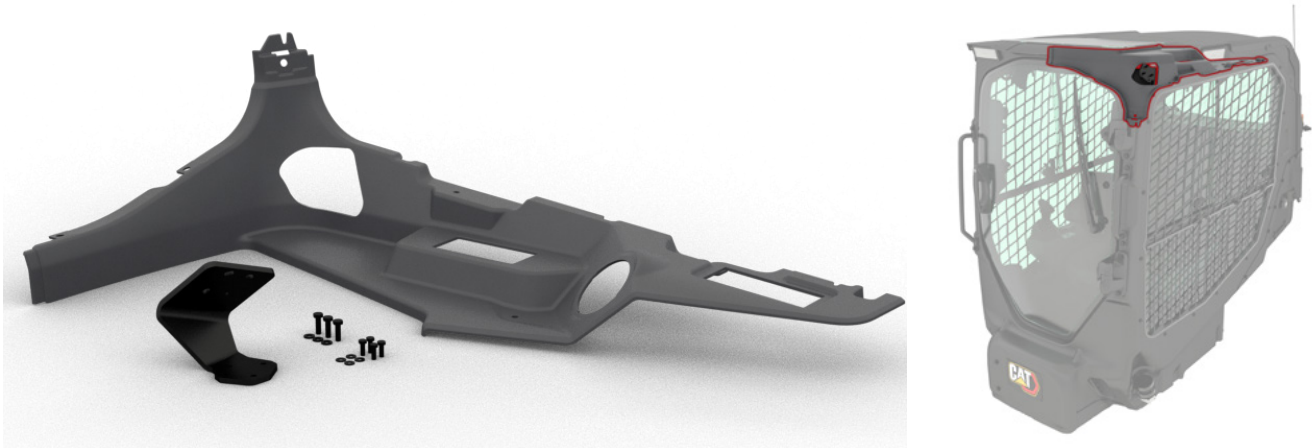
Legend:

	Table rows with a white background are stocked kits. The parts shown in the left image for each kit listing are representative of the parts included in the box.
	Table rows with a grey background are paper kits. The parts shown in the left image for each kit listing need to be purchased separately. The consist can be found using the hyperlinked part number or can be provided by your dealer.
XXX-XXXX	The hyperlinked part numbers will take you to https://parts.cat.com where you can view images and information specific to each part number. The hyperlinked Install Instructions will take you to https://sis2.cat.com where you can view the instructions. If you do not have access to SIS, the instructions are included in the box or can be obtained from your dealer.

COMFORT AND CONVENIENCE

Cab Monitor Mount Kit

The Secondary Display Mount Kit provides an easy to see mounting location for a secondary display, such as the Trimble TD510 7-inch (178 mm) display or similar, that may be needed when using grade technology systems. Display not included. Not compatible with High Mounted Front Camera.



Product	Model	Part Number	Install Instructions	Estimated Install Time
SSL, CTL	All	618-2838	M0158059	45 minutes

Cell Phone Mount Kit

The spring-loaded phone holder features an 'X' design that expands and contracts to provide a perfect fit for your device. Holder is made of powder-coated, marine-grade aluminum, stainless steel components, and high-strength composite for durability.



Product	Model	Part Number	Install Instructions	Estimated Install Time
SSL, CTL	250, 255, 260, 265, 270, 275, 285	615-0300	M0158065	5 minutes

Front Door Kit

Glass or polycarbonate front door kits to convert an open canopy machine into an enclosed cab machine. Includes door, seal, hinges, latch, emergency release handles, wiper assembly, washer bottle, cab struts, and hardware. Side windows sold separately.



Product	Model	Type	Part Number	Install Instructions	Estimated Install Time
SSL, CTL	All	Glass	638-6753	M0160517	1.5 Hours
		Polycarbonate	638-6754	M0160521	

Side Windows Kit and Window Seal Kit

Side window kit to convert an open canopy machine into an enclosed cab machine. This kit lists the part numbers for the right and left side windows, grommets for sealing the floor of the cab, and hardware to install the windows (front door listed separately in this guide).

Side window seal kits are also available as a repair option.



Product	Model	Type	Part Number	Install Instructions	Estimated Install Time
SSL, CTL	All	Side Windows Kit	638-6757*	M0160523	1 hour
	All	Right Window Seals	644-8573	M0160525	30 minutes
		Left Window Seals	644-8574	M0164465	30 minutes

*The part number provided is for reference only. Individual parts must be ordered. Please contact your Cat® dealer and reference the instructions number listed above for parts list and proper installation instructions.

Heavy Duty Toolbox Kit

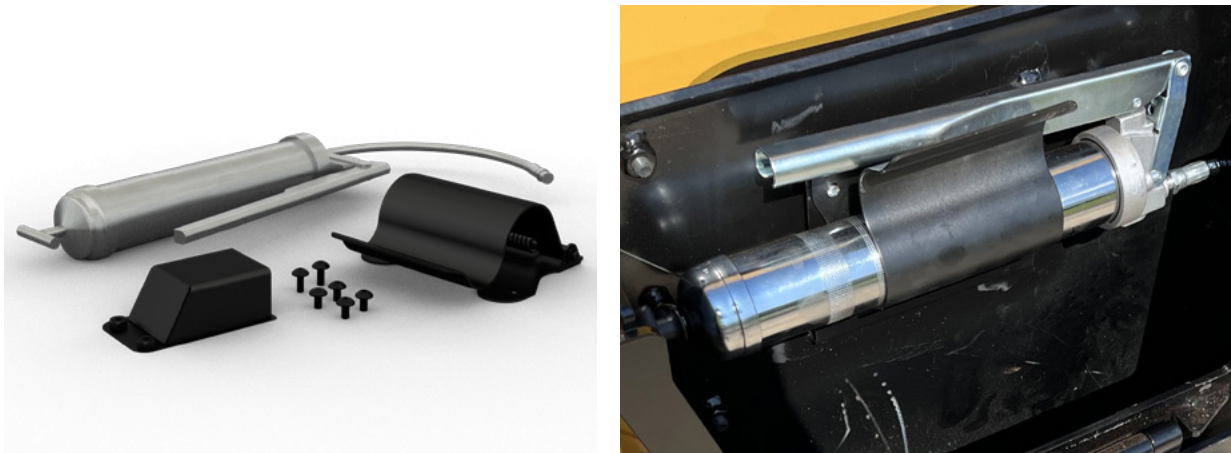
This kit provides a heavy duty toolbox for the side of the machine. Kit includes toolbox, mounting bracket, padlock, and hardware. Not Compatible with External Fuel Tanks.



Product	Model	Type	Part Number	Install Instructions	Estimated Install Time
SSL, CTL	250, 255, 260, 265	Left Side	624-4584	M0159819	15 minutes
		Right Side	624-4583	M0159811	
	270, 270 XE, 275, 275 XE, 285, 285 XE	Left Side	625-9246	M0159823	
		Right Side	625-9245	M0159821	

Toolbox Manual Grease Gun and Mount Kit

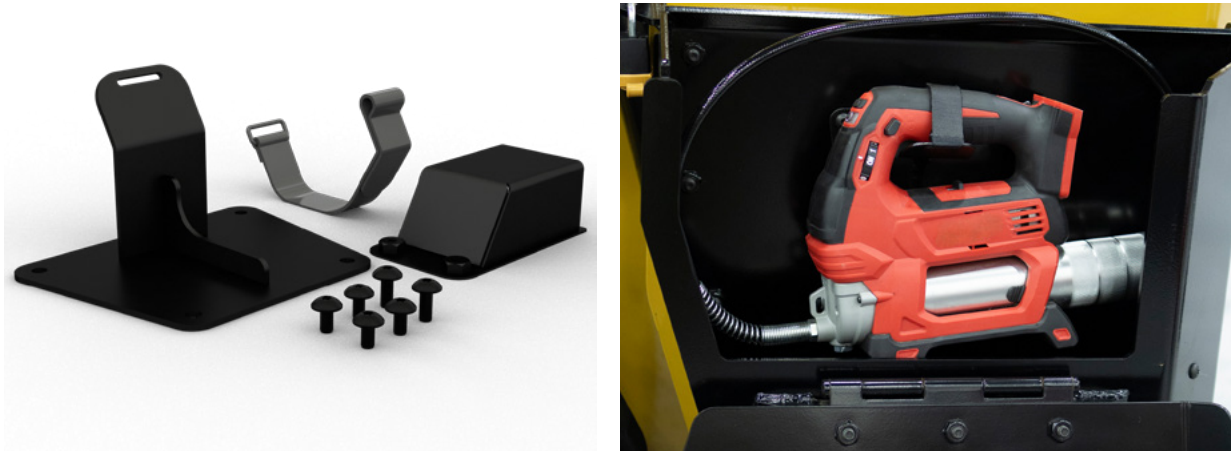
This kit provides a manual grease gun and a toolbox mount for either the left or right heavy duty toolboxes. Includes professional grade manual grease gun, spring loaded clamp for mounting, grease nozzle drip receptacle, and hardware.



Product	Model	Part Number	Install Instructions	Estimated Install Time
SSL, CTL	All	652-6296	M0170619	5 minutes

Toolbox Powered Grease Gun Mount Kit

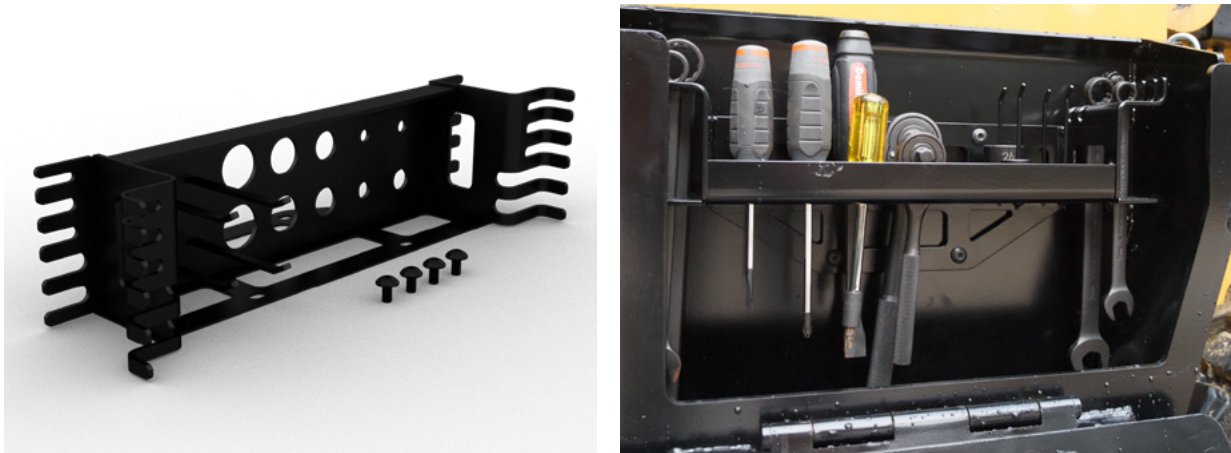
This kit provides a toolbox mount for a powered grease gun and works with either the left or right heavy duty toolboxes. Includes mounting bracket, hook and loop strap, and hardware. Powered grease gun may be purchased separately from the vendor of your choice (not included).



Product	Model	Part Number	Install Instructions	Estimated Install Time
SSL, CTL	All	652-6297	M0170621	5 minutes

Toolbox Tool Organizer Kit

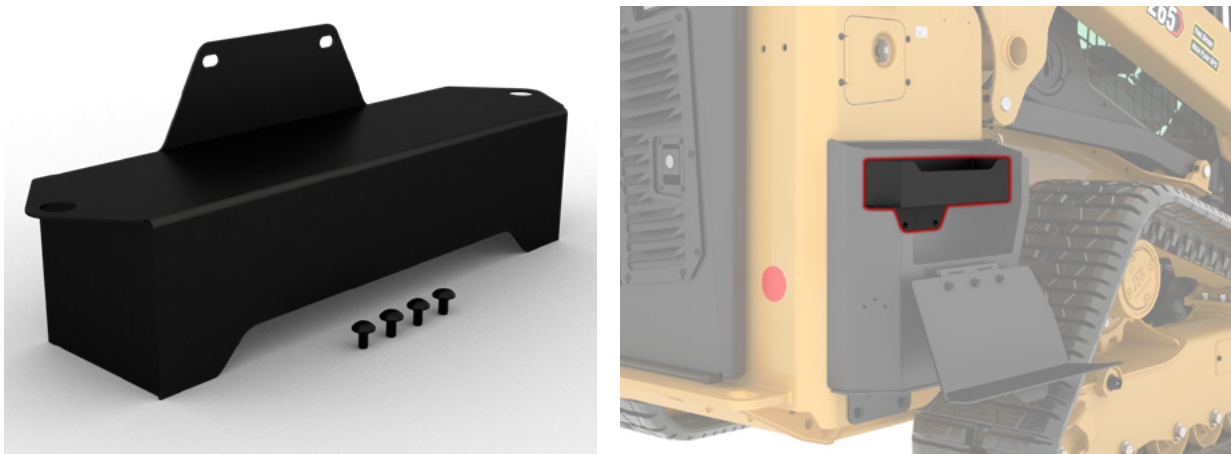
This kit provides a steel tool organizer for either the left or right heavy duty toolboxes. Tools sold separately.



Product	Model	Part Number	Install Instructions	Estimated Install Time
SSL, CTL	All	652-6295	M0170617	5 minutes

Toolbox Tool Tray Kit

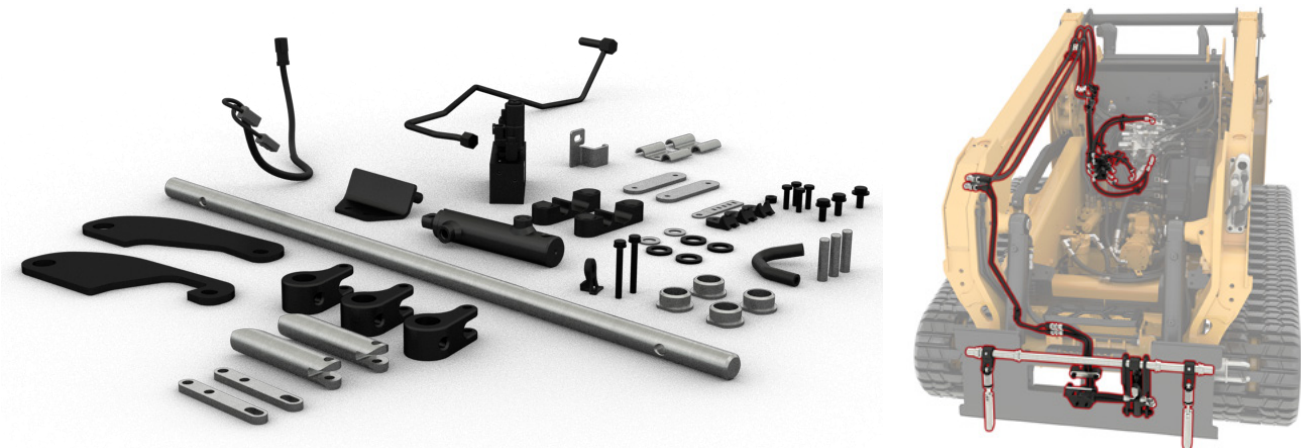
This kit provides a steel tool tray for either the left or right heavy duty toolboxes. Tools sold separately.



Product	Model	Part Number	Install Instructions	Estimated Install Time
SSL, CTL	All	652-6294	M0170615	5 minutes

Hydraulic Coupler Kit

Provides components needed to convert a machine with a manual work tool coupler into a hydraulically actuated coupler. Includes hydraulic cylinder, work tool engagement pin assembly, bar, cam levers, brackets, tubes, adapters, and hardware. **Hose assemblies not included.** Hose assembly part numbers are provided in the special instructions, and they can be built by the dealer.



Product	Model	Part Number	Install Instructions	Estimated Install Time
SSL, CTL	250, 255, 260, 265	643-0240	M0162929	10 hours
	270, 270 XE, 275, 275 XE	653-8061	M0170662	
	285, 285 XE	654-0329	M0170664	

Premium Display and Joystick Kit

This kit provides parts required to install the Advanced Touchscreen Monitor and the Advanced Joysticks. Not compatible with Open Canopy units.



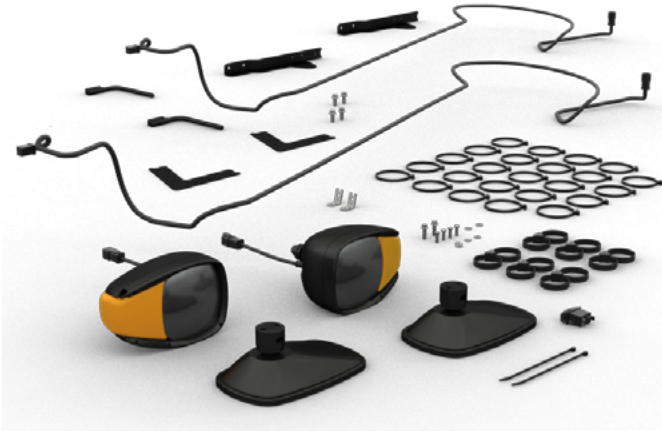
Product	Model	Part Number	Install Instructions	Estimated Install Time
SSL, CTL	250, 255, 260, 265, 270, 275, 285	642-9060*	M0164477	Recommended Dealer Install

*Recommended dealer install. Requires Cat Electronic Technician (ET) to complete installation of this kit.

EMISSIONS AND REGULATIONS

Front Rooding Lights Kit

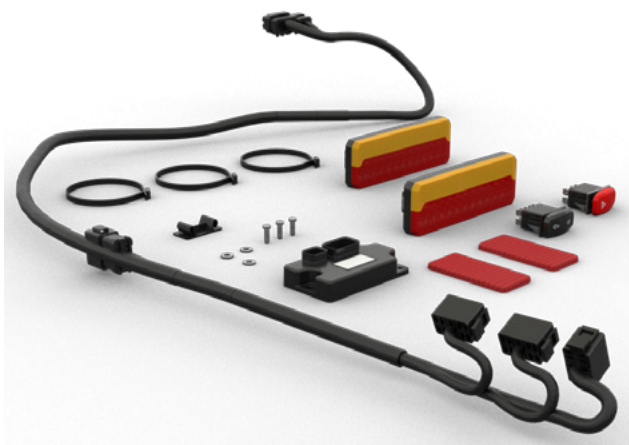
Kit includes lift arm mounted front rooding lights and two mirrors. These components are mandatory for Road Homologation in Italy and other European (EU) countries. Additional parts may be required to obtain rooding homologation.



Product	Model	Part Number	Install Instructions	Estimated Install Time
SSL, CTL	250, 255, 260, 265	637-2998	M0162911	20 minutes
	270, 270 XE, 275, 275 XE, 285, 285 XE	637-7026	M0162915	

Rear Rooding Lights Kit

This kit provides Rear Rooding light components (rear reflectors, brake lamps, directional indicators/turn signals, hazard lights) to meet rooding requirements for Italy and other EU countries. Additional parts may be required to obtain rooding homologation.



Product	Model	Part Number	Install Instructions	Estimated Install Time
SSL, CTL	All	637-2999	M0162651	45 minutes

Rear Rooding Lights Kit (Wide Extension)

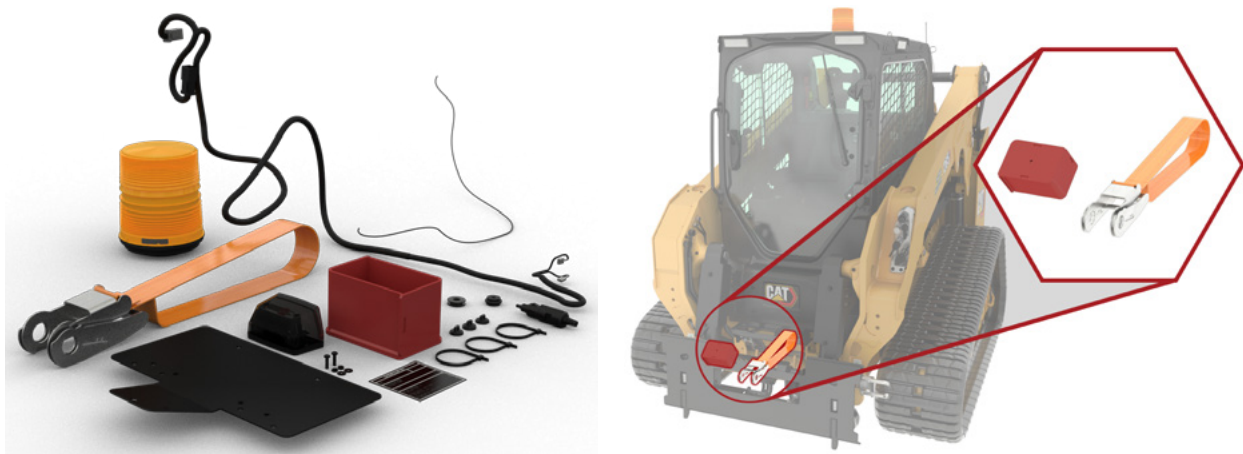
This kit provides components that allow the rear lights to be relocated to mounting locations on the sides of the rear frame towers for use with wider attachments to meet roading requirements in Italy and other EU countries. Additional parts may be required to obtain roading homologation.



Product	Model	Part Number	Install Instructions	Estimated Install Time
SSL, CTL	All	641-8655	M0162655	30 minutes

Rooding Conversion Kit

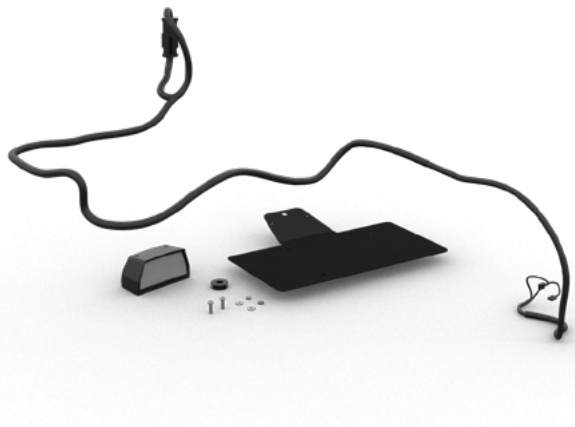
Includes roading approval plate, license plate bracket, amber beacon, lock for quick coupler, and roading block. The Bucket Tooth Guard Kit and Front Rooding Lights Kit are mandatory for Road Homologation in Italy and other EU countries. Additional parts may be required to obtain roading homologation.



Product	Model	Part Number	Install Instructions	Estimated Install Time
SSL, CTL	250, 255, 260, 265	609-8318	M0162663	15 minutes
	270, 270 XE, 275, 275 XE, 285, 285 XE	638-1627	M0170397	

Roading License Plate Kit

Provides mounting provision to install registration (license) plate. Includes registration (license) plate bracket, light to illuminate plate, harness, and hardware. These components are included in the Roading Conversion factory offering and kit for Roading Homologation in Italy and other EU countries. Not compatible with Heavy Duty Rear Door Guard.

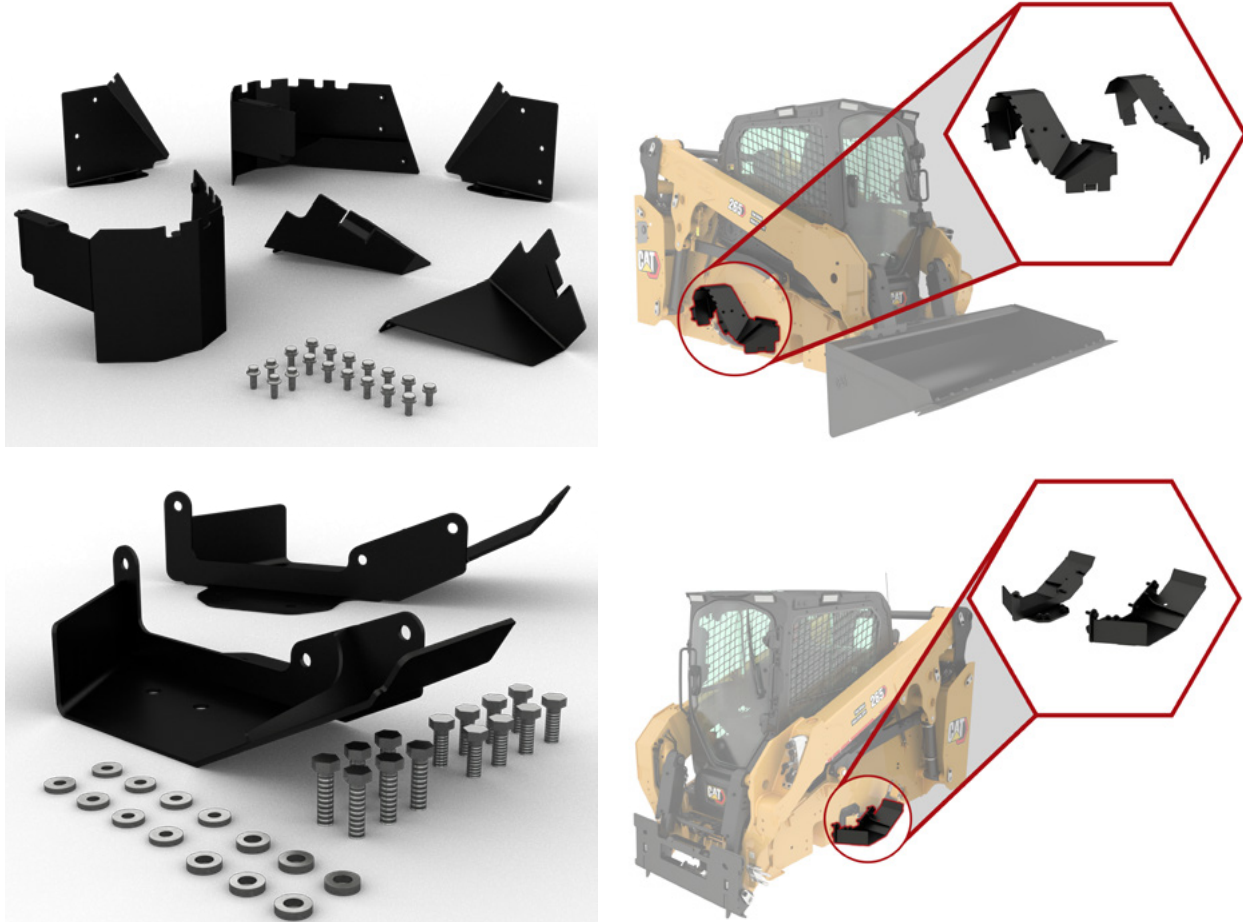


Product	Model	Part Number	Install Instructions	Estimated Install Time
SSL, CTL	250, 255, 260, 265	644-0480	M0155755	10 minutes
	270, 270 XE, 275, 275 XE, 285, 285 XE	646-2884	M0170395	

GUARDING

Compact Track Loader Drive Lines Guarding Kit

Provides additional guarding for demanding applications where additional protection for the drive lines is desired. The bottom guards are recommended in general applications where rocks and other damage causing impediments are typically located below the drive lines. Additionally, fully enclosing the drive lines in general applications can cause soil and other fine material to build up inside the enclosure. A full enclosure (bottom + top guards) is primarily recommended for applications like mulching and brush cutting where tree branches and other impediments can contact the drive lines from below or above.

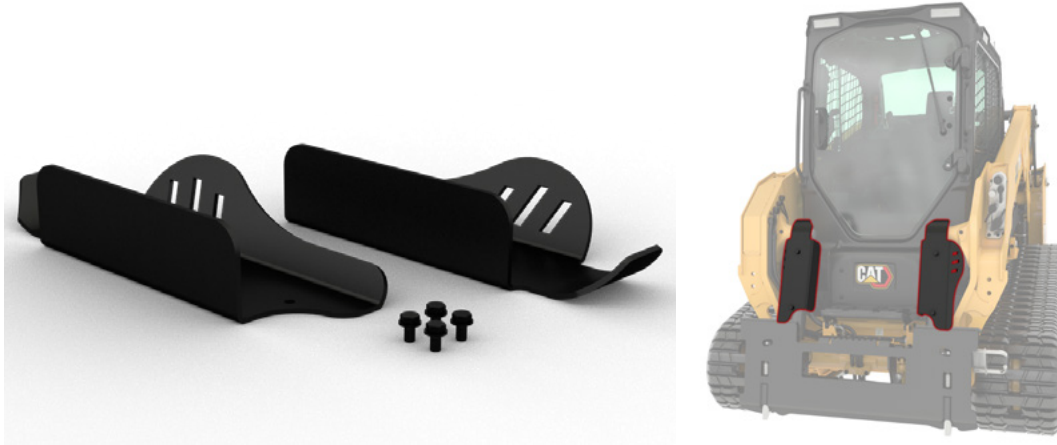


Product	Model	Type	Part Number	Install Instructions	Estimated Install Time
CTL	255	Top	640-4281	M0164683	1.5 Hours
		Bottom	607-4444	M0156105	
	265	Top	640-4282	M0164685	
		Bottom	609-7808	M0156107	

*This kit requires removal of the undercarriage for mounting the guarding components.

Cylinder Guard Kit

This kit provides guarding for the tilt cylinders. Not compatible with regions requiring Conformité Européenne (CE) or UK Conformity Assessed (UKCA) Certification, and 642-9967 is not compatible with Manual Coupler.

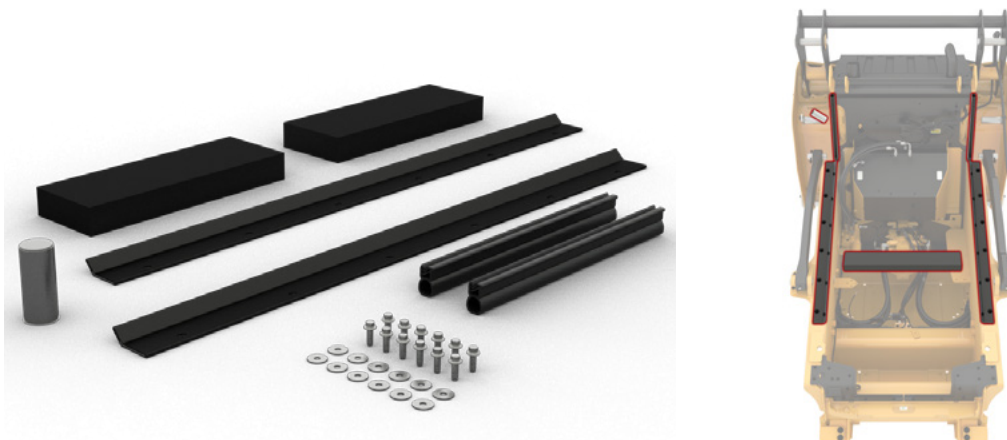


Product	Model	Part Number	Install Instructions	Estimated Install Time
SSL, CTL	250, 255, 260, 265	642-9967*	M0162667	5 minutes
	270, 270 XE, 275, 275 XE, 285, 285 XE	643-0012*	M0162669	

*The part number provided is for reference only. Individual parts must be ordered. Please contact your Cat dealer and reference the instructions number listed above for parts list and proper installation instructions.

Debris Guarding Kit

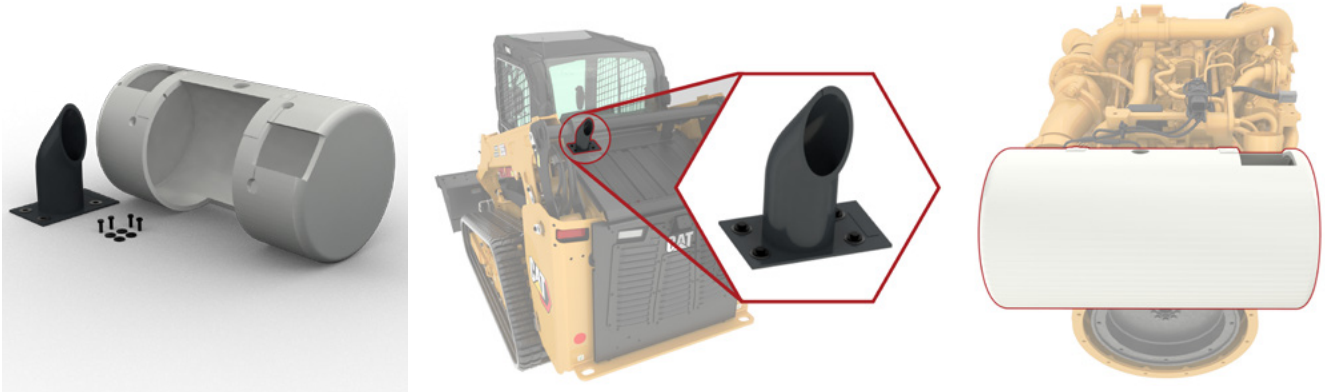
This kit provides components that restrict debris and other material from entering the lower machine frame. Includes various seals designed to cover the openings that exist between the frame/body/cab of the machine as well as a fuel strainer. This kit is recommended for debris intensive applications and should be used in conjunction with the Engine Insulation Kit and Turbocharger Guard Kit.



Product	Model	Part Number	Install Instructions	Estimated Install Time
SSL, CTL	250, 255, 260, 265	609-5609	M0155733	15 minutes
	270, 270 XE, 275, 285	637-4922	M0159255	

Engine Insulation Kit

This kit provides parts that lower the surface temperature of certain engine and exhaust components. This kit is recommended for debris intensive applications and should be used in conjunction with the Debris Guarding Kit and Turbocharger Guard Kit.

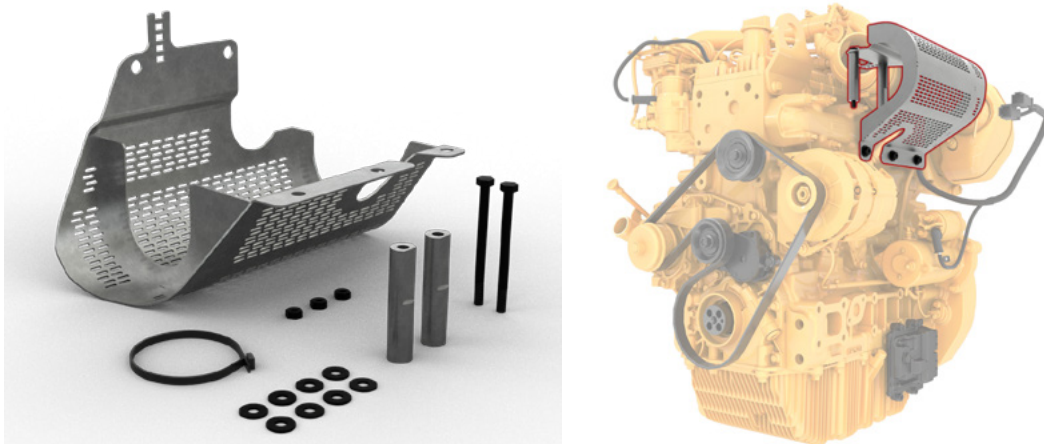


Product	Model	Part Number	Install Instructions	Estimated Install Time
SSL, CTL	250, 255, 260	632-9066*	M0156049	Recommended Dealer Install
CTL	265	632-9067*	M0156051	
SSL, CTL	270, 270 XE, 275, 275 XE, 285, 285 XE	623-9418*	M0164703	

*This kit requires engine removal to install the exhaust wraps.

Turbocharger Guard Kit

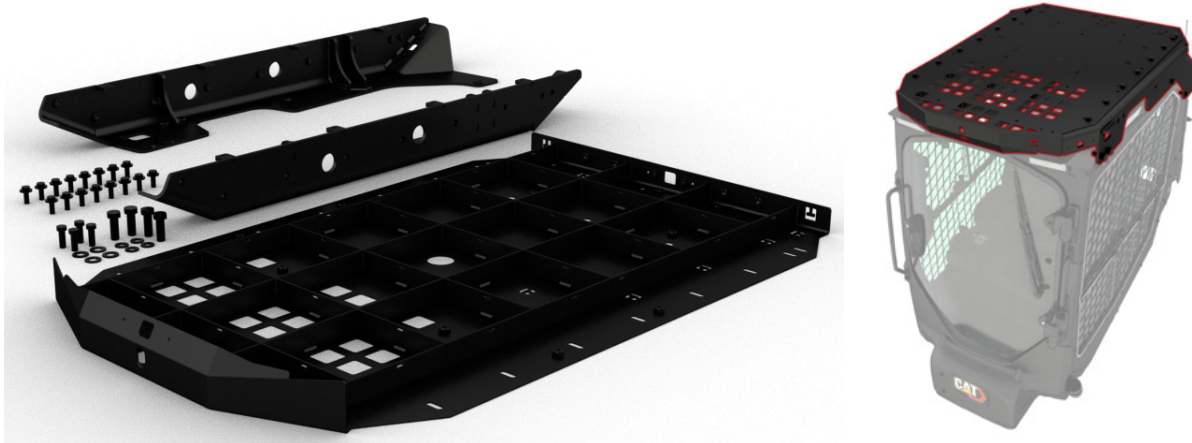
Kit contains a steel mesh guard designed to cover the turbocharger to assist in deterring the collection of material on this component. This kit is recommended for debris intensive applications and should be used in conjunction with the Debris Guarding Kit and the Engine Insulation Kit.



Product	Model	Part Number	Install Instructions	Estimated Install Time
SSL, CTL	250, 255, 260, 265	607-7351	M0156041	45 minutes
	270, 270 XE, 275, 275 XE, 285, 285 XE	616-9369	M0164699	

Falling Object Protection System Level 2 (FOPS Level 2) Kit

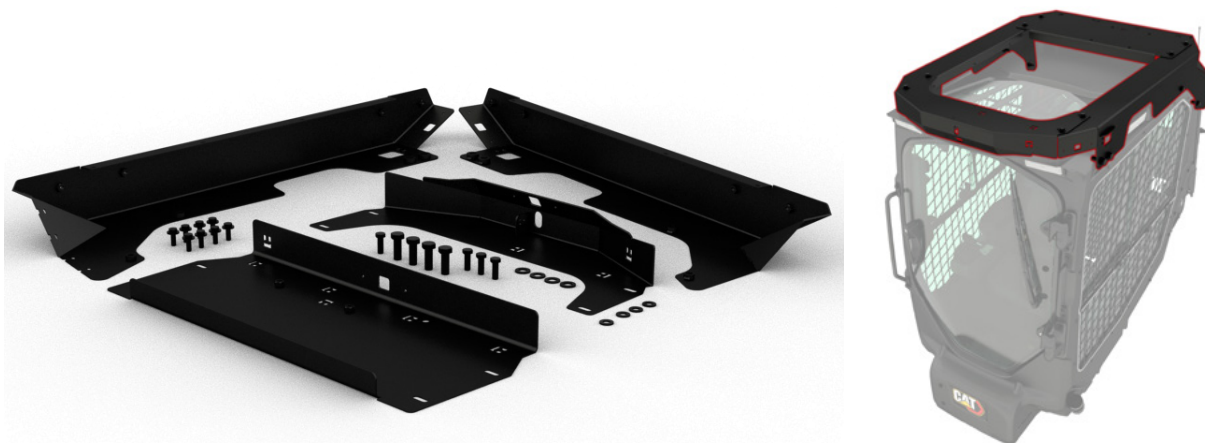
Kit provides means of installing roof mounted accessories and provides additional FOPS Level 2 overhead protection. Meets ISO 3449:1992. Compatible with the water tank, auxiliary cooler, single point lift, powered HVAC pre-cleaner, warning lights, and seat belt lights. This kit is recommended for demanding applications like Demolition, Land Management, Aggregate Handling, and other applications that could incur an incident where an object strikes the roof of the machine.



Product	Model	Part Number	Install Instructions	Estimated Install Time
SSL, CTL	All	650-7628	M0170385	30 minutes

Roof Mounted Attachments Bracket Kit

Kit provides means of installing roof mounted accessories. Compatible with the powered HVAC pre-cleaner, warning lights, and seat belt lights.



Product	Model	Part Number	Install Instructions	Estimated Install Time
SSL, CTL	All	635-0428	M0159809	30 minutes

Guarding Protection Kit

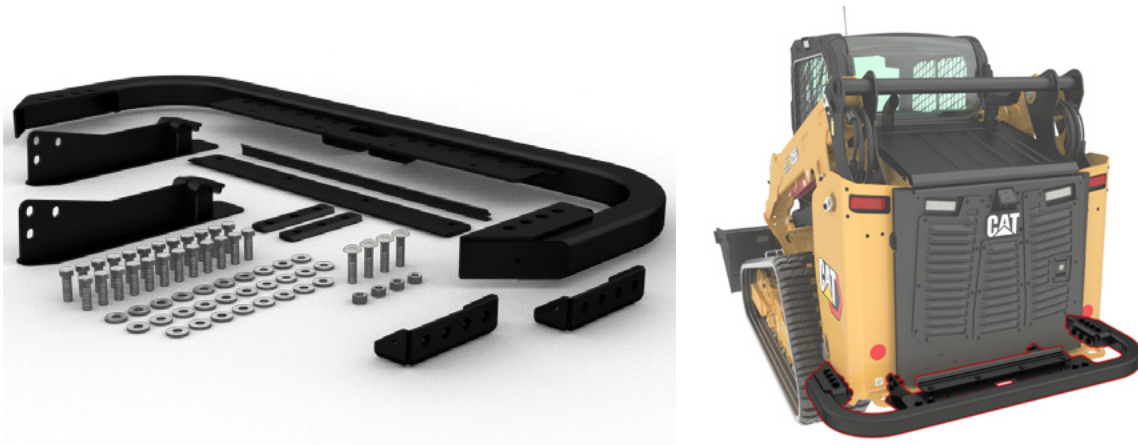
Provides additional guarding for customers in demanding applications where extra safeguarding of components is required. Includes light guarding (front, rear, side work lights), quick disconnect guarding, and hydraulic lines guard cover (under step). Not compatible with European Union regulations.



Product	Model	Part Number	Install Instructions	Estimated Install Time
SSL, CTL	250, 255	609-5610	M0155503	30 minutes
	260, 265	610-2091	M0159257	
	270, 270 XE, 275, 275 XE	620-6819	M0155501	
CTL	285, 285 XE	629-2322	M0159259	

Heavy Duty Rear Bumper Kit

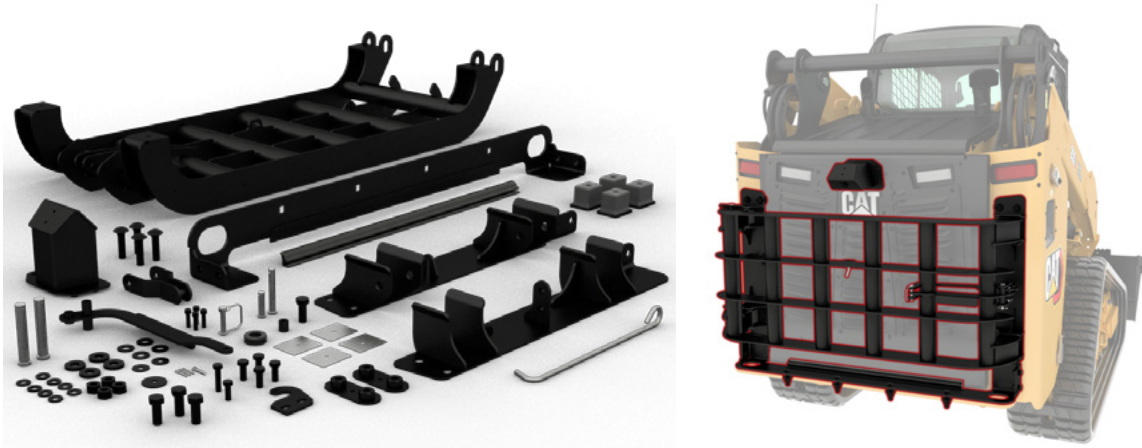
Kit provides a tubular bumper structure that extends protection from the factory rear bumper. For use in demanding applications like demolition, recycling, and land management. Not compatible with Rear Counterweights or Winch.



Product	Model	Part Number	Install Instructions	Estimated Install Time
SSL, CTL	250, 255, 260, 265	613-4567	M0156111	30 minutes
	270, 270 XE, 275, 285	621-1501	M0157257	

Rear Door Guard Kit

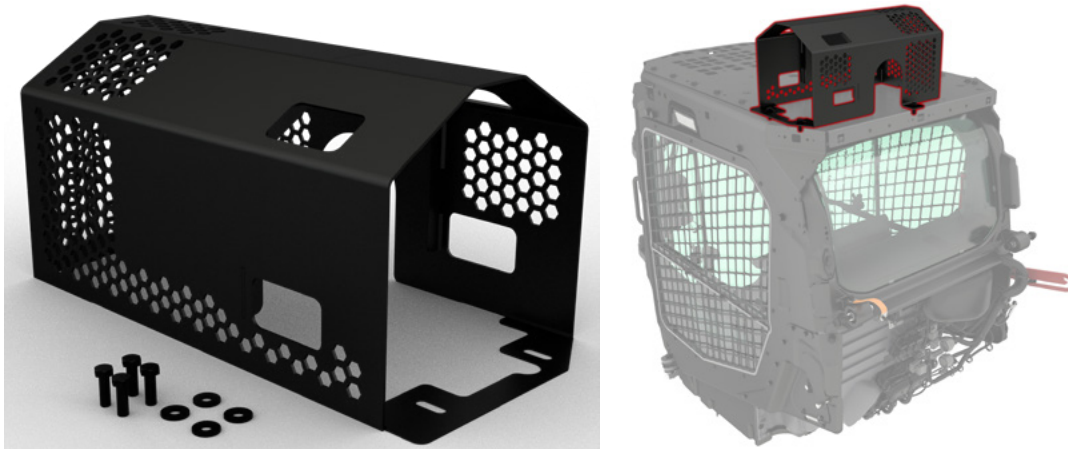
Provides a tubular guarding structure delivering protection to the rear of the machine in demanding applications like demolition, recycling, and land management. Includes a swing out guard for engine compartment access and mounting for rear camera. Not compatible with Winch or Roading License Plate.



Product	Model	Part Number	Install Instructions	Estimated Install Time
SSL, CTL	250, 255, 260, 265	620-2860	M0156115	30 minutes
	270, 270 XE, 275, 275 XE, 285, 285 XE	621-1504	M0157259	

HVAC Pre-Cleaner Guarding Kit

This kit provides the part numbers for a perforated steel guard and hardware to protect the Powered HVAC Pre-Cleaner when mounted on the FOPS Level 2 guard. For use in demanding applications like land management. Requires the FOPS Level 2 or Roof Mounted Attachments Bracket (sold separately).



Product	Model	Part Number	Install Instructions	Estimated Install Time
SSL, CTL	All	654-3199*	M0172501	10 minutes

*The part number provided is for reference only. Individual parts must be ordered. Please contact your Cat dealer and reference the instructions number listed above for parts list and proper installation instructions.

Rear Window Guard Kit

This kit provides a steel mesh guard for the rear window. For use in demanding applications like demolition, recycling, land management, etc. Requires the FOPS Level 2 (sold separately). Not compatible with the Roof Mounted Attachments Bracket.



Product	Model	Part Number	Install Instructions	Estimated Install Time
SSL, CTL	All	624-9966	M0158029	10 minutes

Rubber Rear Bumper Kit

This kit provides a light duty rubber bumper for added protection at the rear of the machine. Includes rubber bumper, mounting bracket, and hardware.



Product	Model	Part Number	Install Instructions	Estimated Install Time
SSL, CTL	250, 255, 260, 265	647-0735	M0168595	15 minutes

MAINTENANCE IMPROVEMENT

Engine Air Pre-Cleaner Kit

Turbine type pre-cleaner for the engine air filter helps to extend filter life. For use in high dust/debris applications.

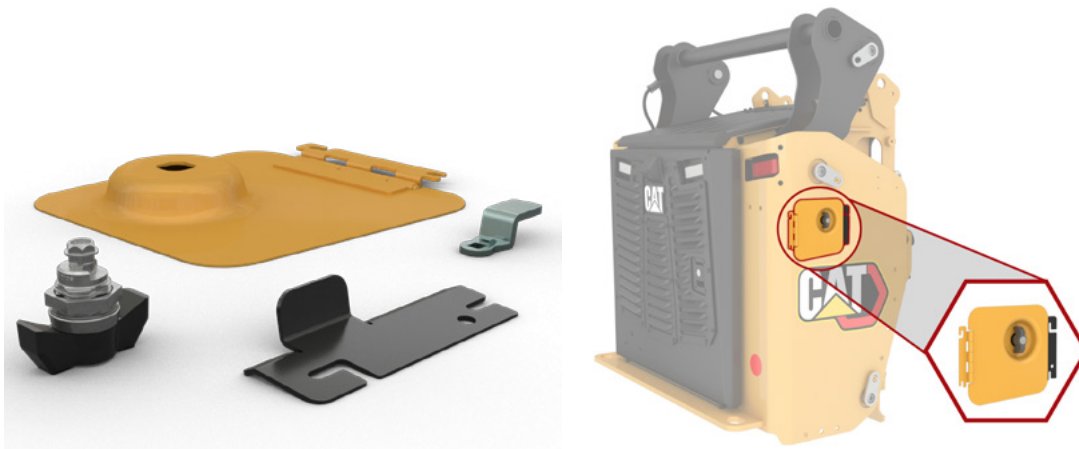


Product	Model	Part Number	Install Instructions	Estimated Install Time
SSL, CTL	250, 255, 260, 265	590-5797*	M0156039	5 minutes
	270, 270 XE, 275, 275 XE, 285, 285 XE	617-1775*	M0164697	

*The part number provided is for reference only. Individual parts must be ordered. Please contact your Cat dealer and reference the instructions number listed above for parts list and proper installation instructions.

Fuel Door Kit

Lockable cover for fuel fill location.



Product	Model	Part Number	Install Instructions	Estimated Install Time
SSL, CTL	All	610-1388*	M0155505	10 minutes

*The part number provided is for reference only. Individual parts must be ordered. Please contact your Cat dealer and reference the instructions number listed above for parts list and proper installation instructions.

Powered HVAC Pre-Cleaner Kit

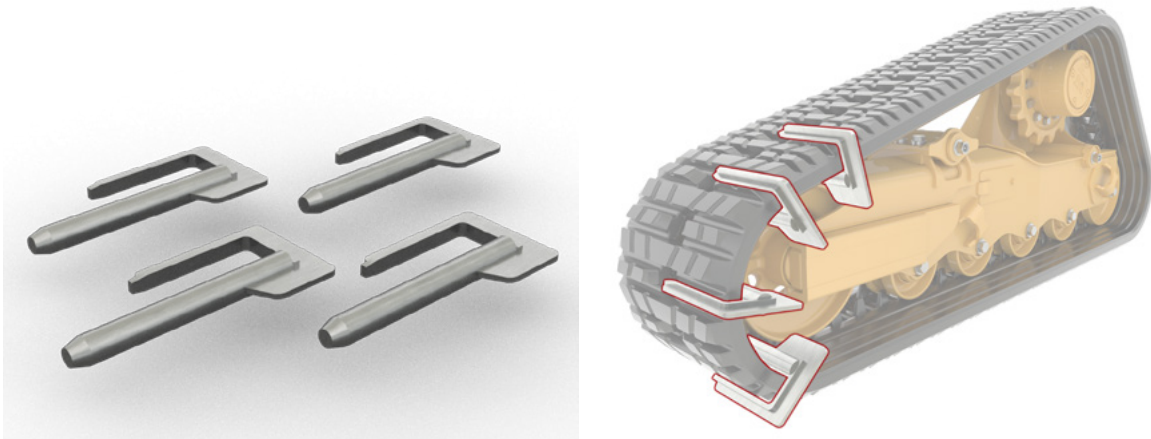
Provides components to install a powered, roof mounted HVAC pre-cleaner for an enclosed cab. The high efficiency cyclonic filtration delivers clean air to the cab and extends service interval time between filter cleanings. Kit includes MERV16 filter. A HEPA filter for higher levels of filtration and a Carbon filter for removal of odors (landfill, livestock, and other applications) can be purchased separately if desired. Requires FOPS Level 2 or Roof Mounted Attachments Bracket (sold separately).



Product	Model	Part Number	Install Instructions	Estimated Install Time
SSL, CTL	All	610-2625	M0158033	1 Hour

Track Removal and Install Aid Kit

Provides a four (4) piece tool set that aids in the removal or installation of the compact track loader (CTL) undercarriage track.

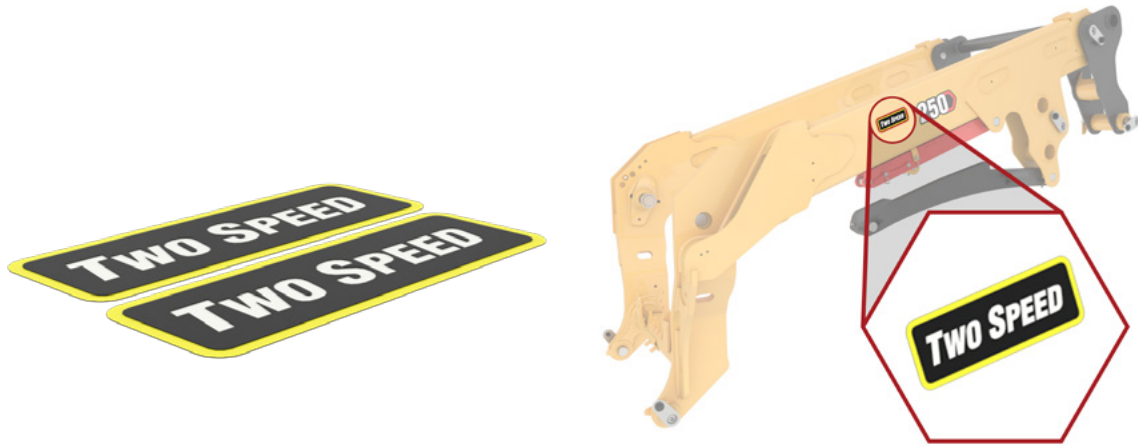


Product	Model	Part Number	Install Instructions	Estimated Install Time
CTL	255, 265, 275, 275 XE, 285, 285 XE	642-3271	M0162939	Not Applicable

PERFORMANCE AND PRODUCTIVITY

1-Speed to 2-Speed Software Enabled Attachment (SEA) Kit

Lifetime purchase of software to upgrade the machine from a Single Travel Speed configuration to a Two Travel Speed configuration.

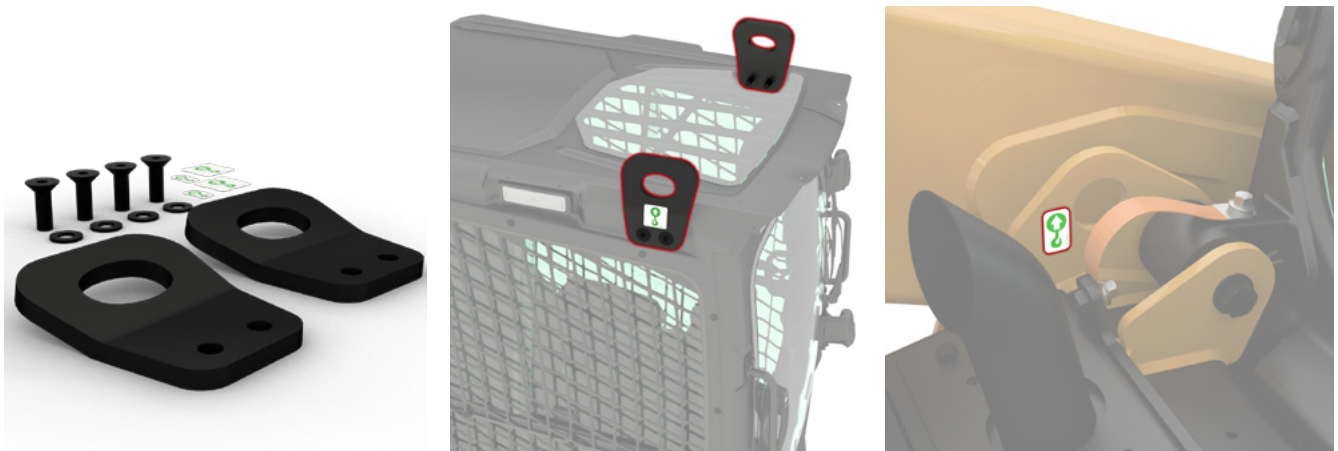


Product	Model	Part Number	Install Instructions	Estimated Install Time
SSL	250, 260, 270	642-9397*	M0162665	Recommended Dealer Install

*The part number provided is for reference only. Individual parts must be ordered. Please contact your Cat dealer and reference the instructions number listed above for parts list and proper installation instructions. Recommended dealer install. Requires Cat Electronic Technician (ET) to complete installation of this kit.

Four Point Lift Kit

This kit provides plates and hardware that attach to the cab roof or FOPS Level 2 to provide machine lifting points/locations. Not compatible with Roof Mounted Attachments Bracket.



Product	Model	Part Number	Install Instructions	Estimated Install Time
SSL, CTL	All	642-9062	M0159805	10 minutes

Single Point Lift Kit

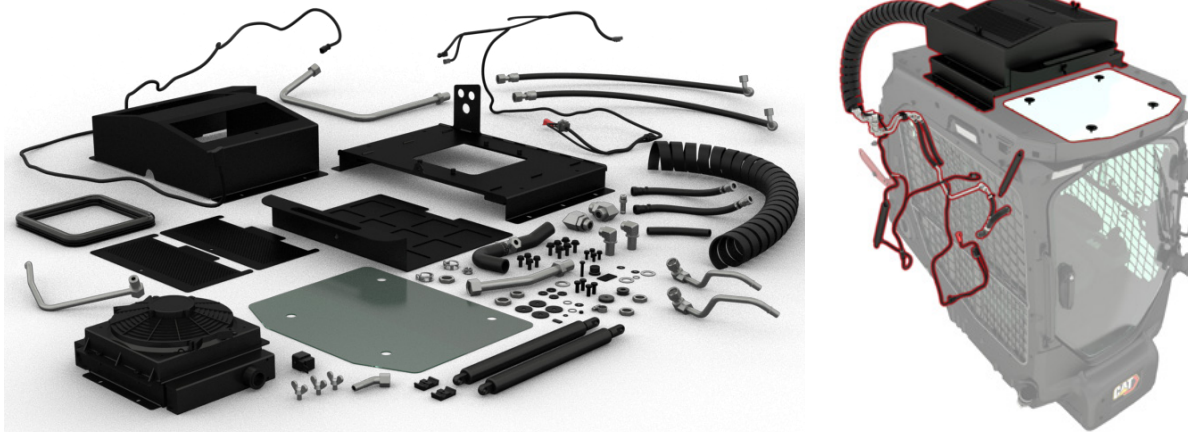
This kit provides a bracket, shackle, link, and hardware that allows the machine to be lifted from a single point. This bracket attaches to the FOPS Level 2 that is mounted on the cab. Requires FOPS Level 2 (sold separately). Not compatible with Auxiliary Hydraulic Cooler, Water Tank, Four Point Lift, or Roof Mounted Attachments Bracket.



Product	Model	Part Number	Install Instructions	Estimated Install Time
SSL, CTL	All	613-3008	M0158039	10 minutes

Auxiliary Hydraulic Cooler Kit

Roof mounted auxiliary hydraulic cooler provides additional hydraulic cooling capacity. For use in heavy duty applications (i.e. mulching, brush cutting, etc.) where the machine is utilized continuously in high flow mode with high demand on the Hystat system at ambient temperatures greater than 38° C (100° F). Requires FOPS Level 2 (sold separately). Not compatible with Water Tank, Single Point Lift, or Roof Mounted Attachments Bracket.



Product	Model	Type	Part Number	Install Instructions	Estimated Install Time
SSL, CTL	270 XE, 275 XE, 285 XE	Auxiliary Cooler Kit	609-9666*	M0158067	Recommended Dealer Install
	270, 275, 285	Auxiliary Cooler Lines Kit (XPS)	655-6201**	M0172123	

*Recommended dealer install. Requires Cat Electronic Technician (ET) to complete installation of this kit.

**This lines kit contains the part numbers for the hydraulic lines necessary to adapt the Auxiliary Cooler Kit for use on an XPS machine. The Auxiliary Cooler Kit is sold separately. The part number provided is for reference only. Individual parts must be ordered. Please contact your Cat dealer and reference the instructions number listed above for parts list and proper installation instructions.

Auxiliary Hose Guide Kit

Kit contains the part numbers for the bracket and hardware needed to secure the auxiliary hydraulic lines running from the quick disconnect coupler on the machine to the attachment (mulcher, brush cutter, cold planer, etc.) on the front of the machine.

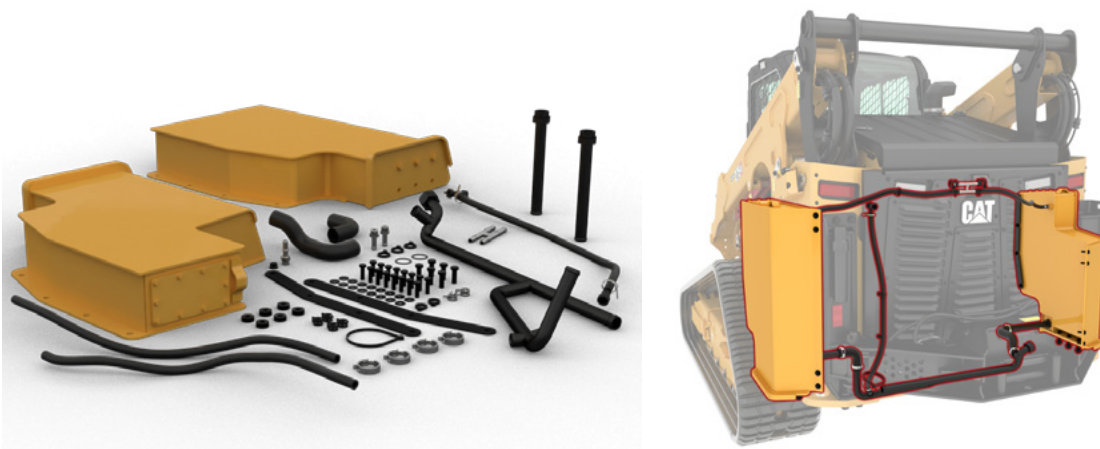


Product	Model	Part Number	Install Instructions	Estimated Install Time
SSL, CTL	250, 255, 260, 265, 275, 275 XE, 285, 285 XE	655-5597*	M0171791	5 minutes
SSL	270, 270 XE	657-6018*	M0173155	

*The part number provided is for reference only. Individual parts must be ordered. Please contact your Cat dealer and reference the instructions number listed above for parts list and proper installation instructions.

External Fuel Tanks Kit

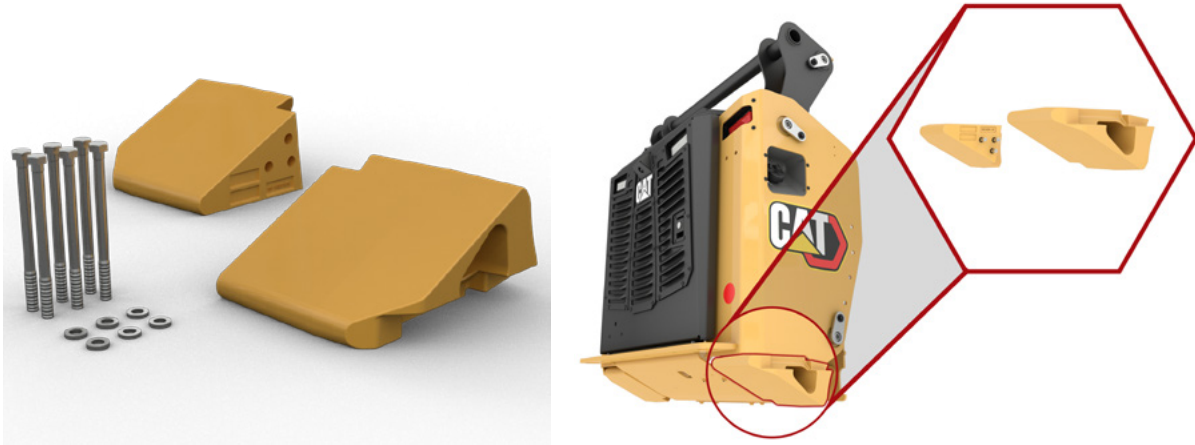
Provides two steel external fuel tanks that deliver a total fuel capacity of 248 L (65 gallons). Not compatible with Counterweights or Side Cameras.



Product	Model	Part Number	Install Instructions	Estimated Install Time
SSL, CTL	270, 270 XE, 275, 275 XE, 285, 285 XE	653-7481	M0170387	2 hours

External Rear Counterweight Kit

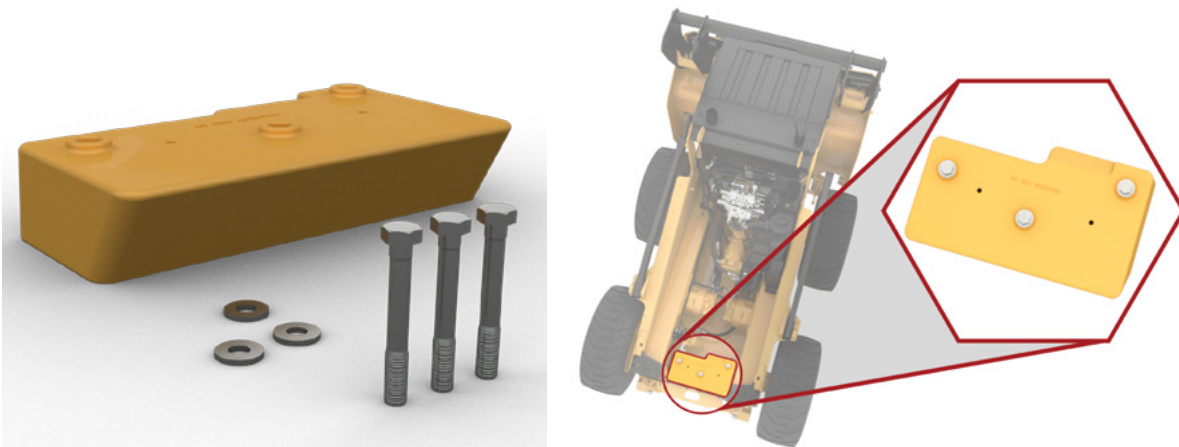
Kit provides one counterweight per side which increases the Rated Operating Capacity for increased stability. Includes mounting hardware. Cannot be used with Heavy-Duty Rear Bumper Kit or External Fuel Tank Kit.



Product	Model	Part Number	Install Instructions	Estimated Install Time
SSL, CTL	250, 255, 260, 265	640-5909	M0162521	1 Hour
	270, 270 XE, 275, 275 XE, 285, 285 XE	640-5910	M0162523	

Internal Front Counterweight Kit

Kit provides the part numbers for a front counterweight and hardware to increase the Rated Operating Capacity (ROC) for increased stability.

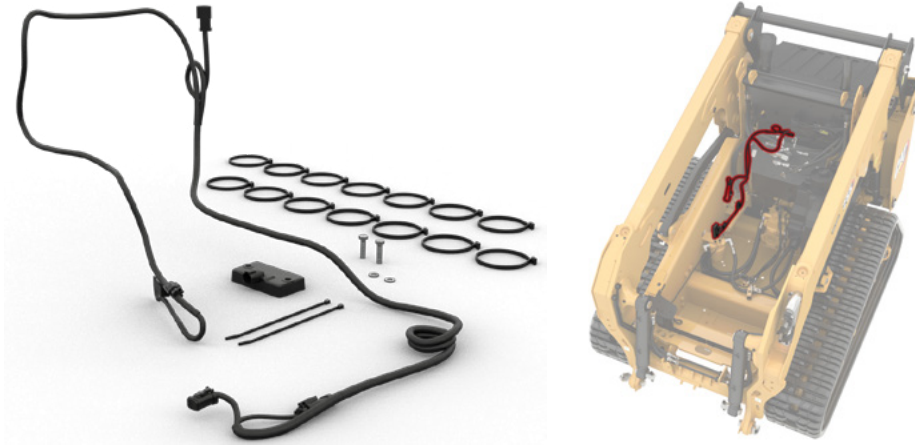


Product	Model	Part Number	Install Instructions	Estimated Install Time
SSL	250	655-4756*	M0171789	10 minutes
	260	640-5911*	M0162525	

*The part number provided is for reference only. Individual parts must be ordered. Please contact your Cat dealer and reference the instructions number listed above for parts list and proper installation instructions.

Inertial Measurement Unit (IMU) Kit

The IMU kit provides information regarding the machine orientation to the machine monitor. Required to be installed on the host machine when using Smart Dozer blade or Cat Command non-line of sight system. Recommended for use with a Smart Grader blade.

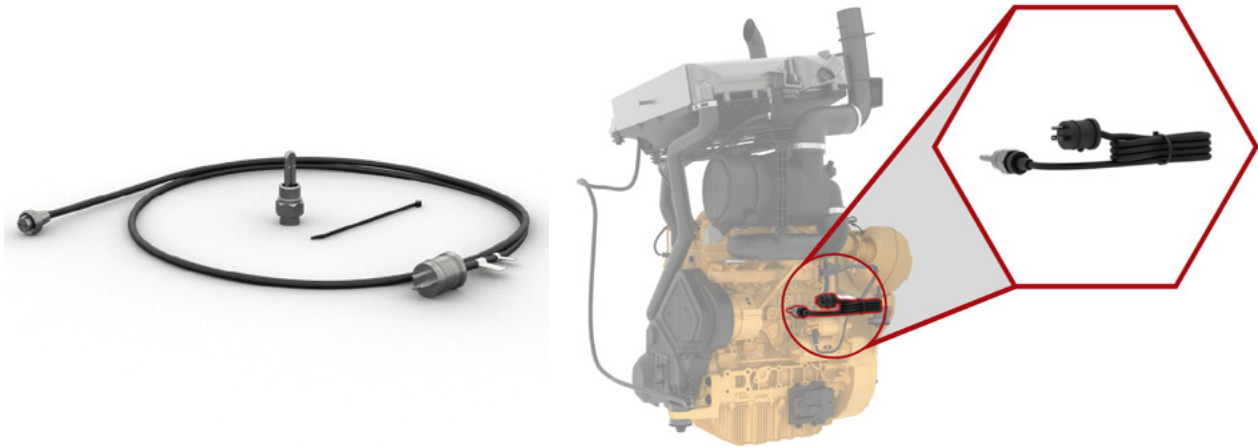


Product	Model	Part Number	Install Instructions	Estimated Install Time
SSL, CTL	All	642-3881*	M0162933	Recommended Dealer Install

* Recommended dealer install. Requires Cat Electronic Technician (ET) to complete installation of this kit.

Jacket Water Heater/Block Heater Kit

Provides coolant/block/jacket water heater for additional cold weather startability.

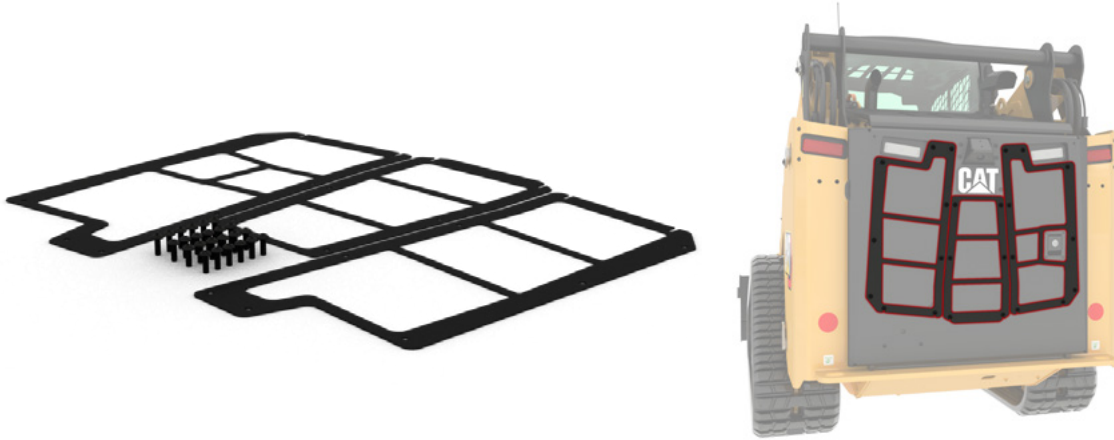


Product	Model	Type	Part Number	Install Instructions	Estimated Install Time
SSL, CTL	All	120 Volt	597-1492*	M0156043	1 hour
		240 Volt	633-0493*	M0156045	

*The part number provided is for reference only. Individual parts must be ordered. Please contact your Cat dealer and reference the instructions number listed above for parts list and proper installation instructions.

Non-Louvered Door Kit

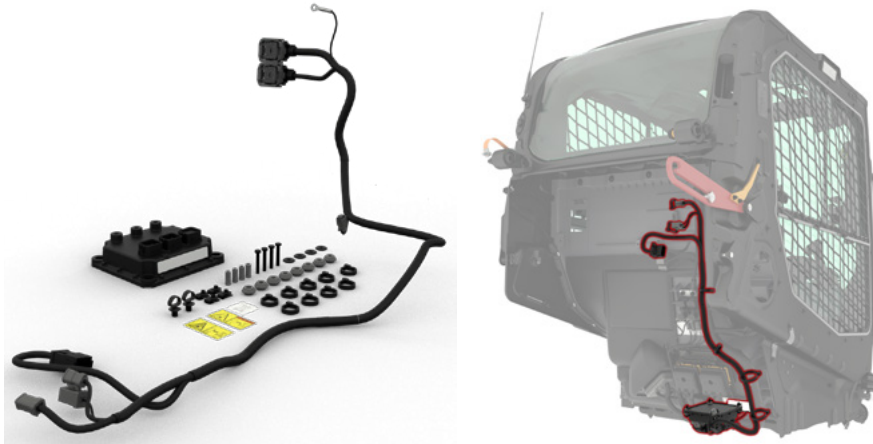
Kit contains plates to convert the louvered rear door into a non-louvered rear door. This kit is beneficial in applications like mowing or brush cutting where wet debris (high moisture content wood pulp) or long strands of debris (grass, wheat, etc.) can attach to the louvers and reduce airflow through the rear door.



Product	Model	Part Number	Install Instructions	Estimated Install Time
SSL, CTL	250, 255, 260, 265	646-8541	M0166204	10 minutes
	270, 270 XE, 275, 275 XE, 285, 285 XE	653-8528	M0170667	

Product Link™ Elite PL 643 Kit

Product Link Elite series PL643 uses cellular networks to transmit location, utilization and health information for viewing in Product Link user applications. Cellular technology provides capabilities for frequent transmission and larger volumes of data.

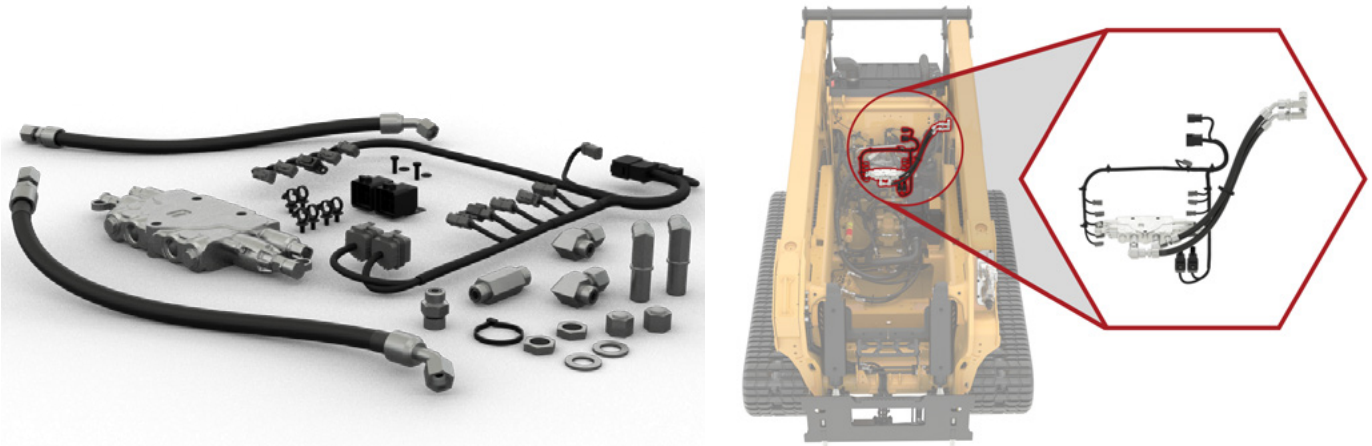


Product	Model	Part Number	Install Instructions	Estimated Install Time
SSL, CTL	All	640-7177*	M0161235	Recommended Dealer Install

*Recommended dealer install. Requires Cat Electronic Technician (ET) to complete installation of this kit. May not be available for all regions.

Rear Auxiliary (Aux) Ready Kit

This kit lists the parts needed to provide rear auxiliary hydraulics to operate rear attachments.

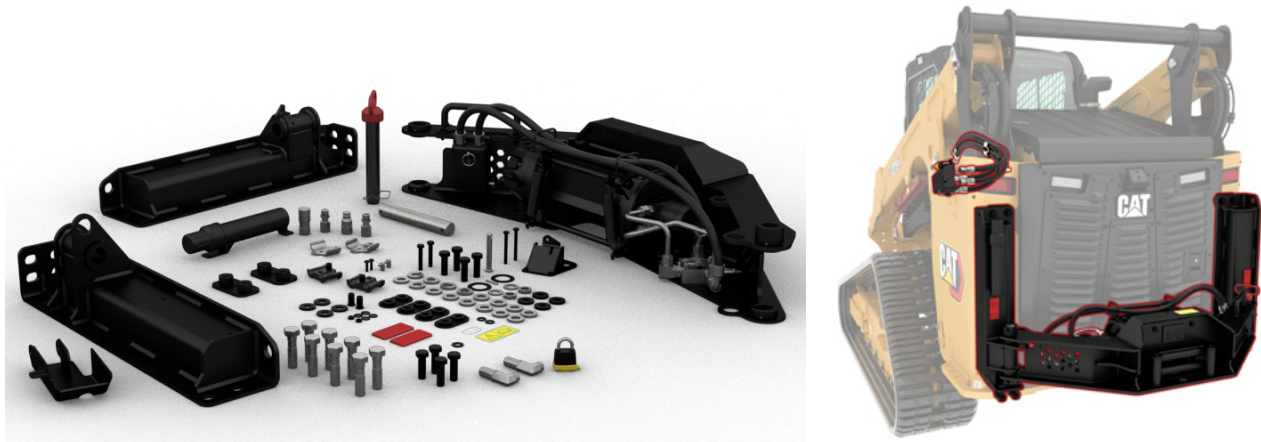


Product	Model	Part Number	Install Instructions	Estimated Install Time
SSL, CTL	270, 270 XE, 275, 275 XE, 285, 285 XE	622-5615*	M0170391	Recommended Dealer Install

*The part number provided is for reference only. Individual parts must be ordered. Please contact your Cat dealer and reference the instructions number listed above for parts list and proper installation instructions.

Rear Winch Kit

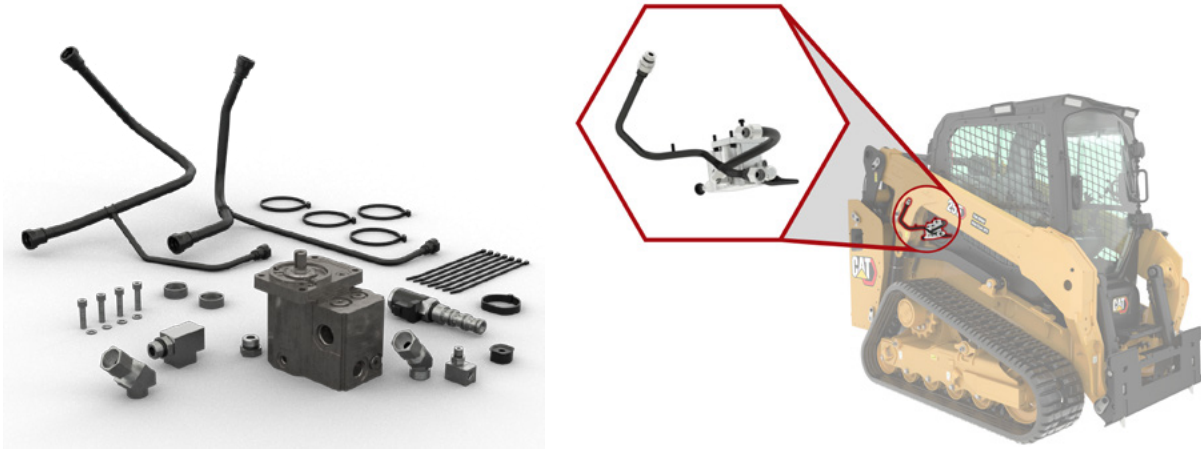
This kit contains the parts needed to provide a winch on the rear of the machine. Includes winch, fairlead roller, winch frame, mounting brackets, pins, hardware, and hoses common to all machines. **Two machine specific hoses not included** and will need to be built by the dealer. Requires Rear Auxiliary Hydraulics. Not compatible with Rear Counterweights, Heavy Duty Rear Door Guard, Heavy Duty Rear Bumper, or Rubber Rear Bumper.



Product	Model	Part Number	Install Instructions	Estimated Install Time
SSL, CTL	270, 270 XE, 275, 275 XE, 285, 285 XE	612-8941	M0174797	1.5 hours

Reversing Fan Kit

Reversing Fan provides automatic and manual purge modes to assist in removing material from the rear door intake screen. Provides both Demand Fan and Reversing Fan functionality.

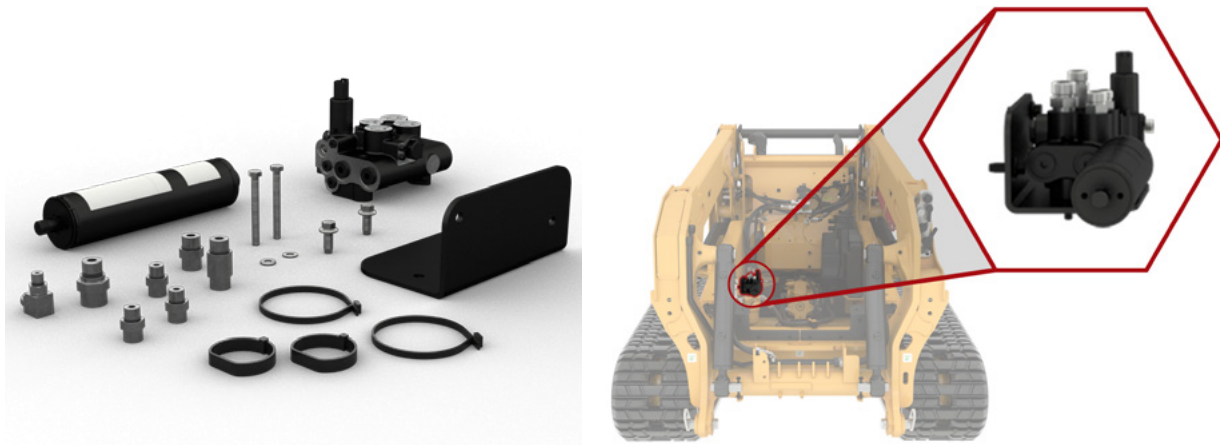


Product	Model	Part Number	Install Instructions	Estimated Install Time
CTL	255, 265	637-2983*	M0159261	Recommended Dealer Install
SSL, CTL	250, 255, 260, 265	645-8776*	M0164853	
	270, 275	637-3001*	M0159263	
	270 XE, 275 XE, 285, 285 XE	637-3002*	M0170393	

*Recommended dealer install. Requires Cat Electronic Technician (ET) to complete installation of this kit.

Ride Control Kit

Speed sensitive ride control feature allows lift arms to “float” and absorb shock when the machine travels over rough terrain. The result is a more comfortable ride and better material retention in the bucket or better load retention with pallet forks. Cannot be used with Drift Valve Kit. **Hose assemblies not included.** Hose assembly part numbers are provided in the special instructions, and they can be built by the dealer.

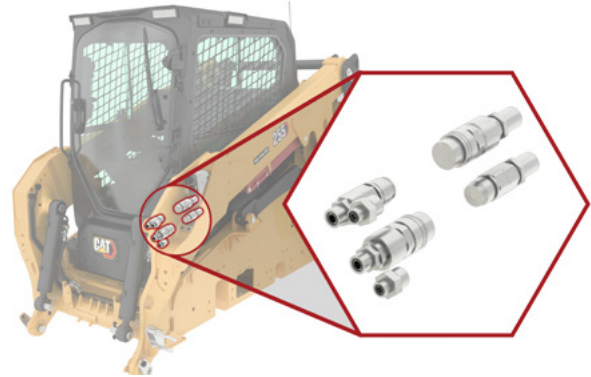


Product	Model	Part Number	Install Instructions	Estimated Install Time
SSL, CTL	250, 255, 260, 265	637-2972*	M0162903	Recommended Dealer Install
	270, 275, 285	637-3000*	M0162905	

*Recommended dealer install. Requires Cat Electronic Technician (ET) to complete installation of this kit.

Screw to Connect Quick Disconnects Kit

This kit lists the parts needed to convert the push-to-connect quick disconnect couplings into a screw-to-connect system. Listed are the male/female screw-to-connect quick disconnect couplings for the machine and the male/female screw-to-connect quick disconnect couplings for an attachment.

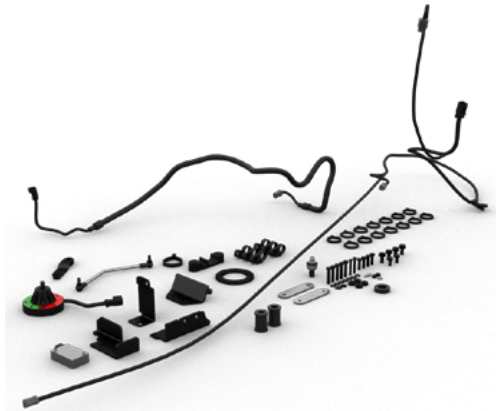


Product	Model	Type	Part Number	Install Instructions	Estimated Install Time
SSL, CTL	250, 255, 260, 265, 270, 275, 285	1/2 inch	641-8654*	M0162647	30 minutes
	270 XE, 275 XE, 285 XE	3/4 inch	572-7968*	M0099347	

*The part number provided is for reference only. Individual parts must be ordered. Please contact your Cat dealer and reference the instructions number listed above for parts list and proper installation instructions.

Self-Level Kit

This kit lists the parts needed to add the Dual Self Level, Return-to-Dig, and Work Tool Positioner features. When engaged the work tool will remain at the specified inclination (e.g. level position, raked back position) throughout the range of motion during both the raise and lower cycles.



Product	Model	Part Number	Install Instructions	Estimated Install Time
SSL, CTL	250, 255	637-2980*	M0162889	Recommended Dealer Install
	260, 265	637-3003*	M0162891	
	270, 270 XE, 275, 275 XE, 285, 285 XE	637-7024*	M0162895	

*The part number provided is for reference only. Individual parts must be ordered. Please contact your Cat dealer and reference the instructions number listed above for parts list and proper installation instructions. Recommended dealer install. Requires Cat Electronic Technician (ET) to complete installation of this kit.

Standard Flow to High Flow SEA Kit

This kit lists the components needed to upgrade from standard flow to high flow hydraulics.



Product	Model	Type	Part Number	Install Instructions	Estimated Install Time
SSL, CTL	250, 255, 260, 265, 270, 275	Standard Flow to High Flow	641-8651*	M0162643	Recommended Dealer Install
CTL	285	Standard Flow to High Flow XPS	641-8650**	M0162645	

The part number provided is for reference only. Individual parts must be ordered. Please contact your Cat dealer and reference the instructions number listed above for parts list and proper installation instructions. Recommended dealer install. Requires Cat Electronic Technician (ET) to complete installation of this kit.

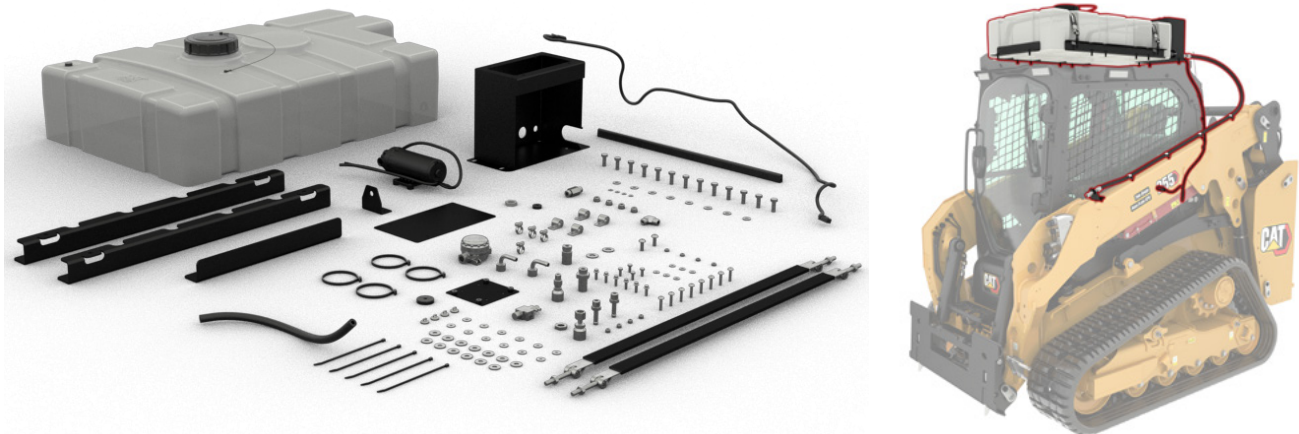
*250, 255, 260, 265, 270: Increases flow from 23 gal/min (86 L/min) at 3500 psi (24,130 kPa) to 30 gal/min (113 L/min) at 3500 psi (24,130 kPa)

*275: Increases flow from 23 gal/min (86 L/min) at 3500 psi (24,130 kPa) to 34 gal/min (128 L/min) at 3500 psi (24,130 kPa)

**Increases flow and pressure from 23 gal/min (86 L/min) at 3500 psi (24,130 kPa) to 34 gal/min (128 L/min) at 4061 psi (28,000 kPa).

Water Tank Kit

Provides 47 gallon (179 L) capacity water tank that is mounted above the cab. Kit includes tank, pump, filter, pump enclosure, straps, brackets, quick disconnect, fittings, and hardware. Auxiliary port on tank provides location for garden hose adapter to be added for easy ground filling. **Hose Assemblies not included** and will need to be built by the dealer. Requires FOPS Level 2 (sold separately). Not compatible with Single Point Lift, Auxiliary Hydraulic Cooler, or Roof Mounted Attachments Bracket.



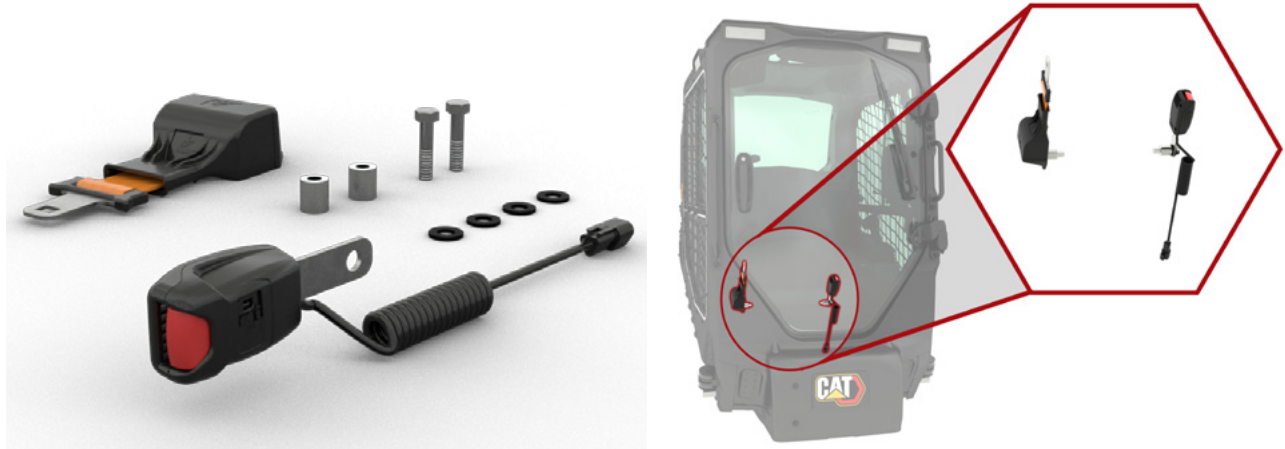
Product	Model	Part Number	Install Instructions	Estimated Install Time
SSL, CTL	All	610-5876*	M0158069	2 hours

*For use with Water Sprinkler Kits for Angle Broom, Pick Up Broom, Utility Broom or Cold Planer.

SAFETY AND VISIBILITY

Seat Belt with Indicator Kit

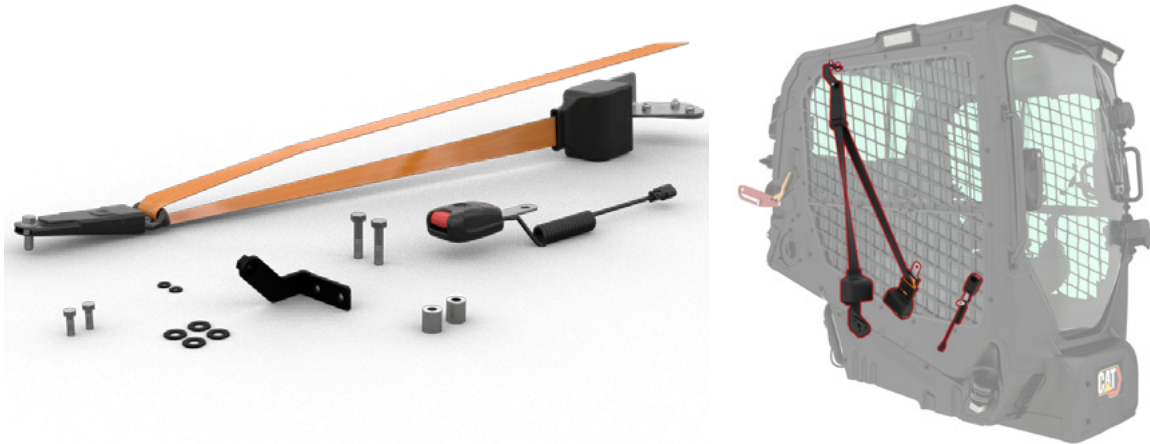
Kit includes lap belt with a seat belt indicator receiver that provides an alert to the operator when the seat belt is not fastened.



Product	Model	Type	Part Number	Install Instructions	Estimated Install Time
SSL, CTL	All	2 inch (50.8 mm) lap belt	644-0997	M0164467	20 minutes
		3 inch (76.2 mm) lap belt	644-0998	M0164469	

3-Point Seat Belt with Indicator Kit

Kit includes a 3-point seat belt that consists of a 3 inch (76.2 mm) wide lap belt with a 2 inch (50.8 mm) wide shoulder belt. Also includes a seat belt indicator receiver that provides an alert to the operator when the seat belt is not fastened.



Product	Model	Part Number	Install Instructions	Estimated Install Time
SSL, CTL	All	644-0999	M0164471	25 minutes

Seat Belt Indicator Beacon Kit

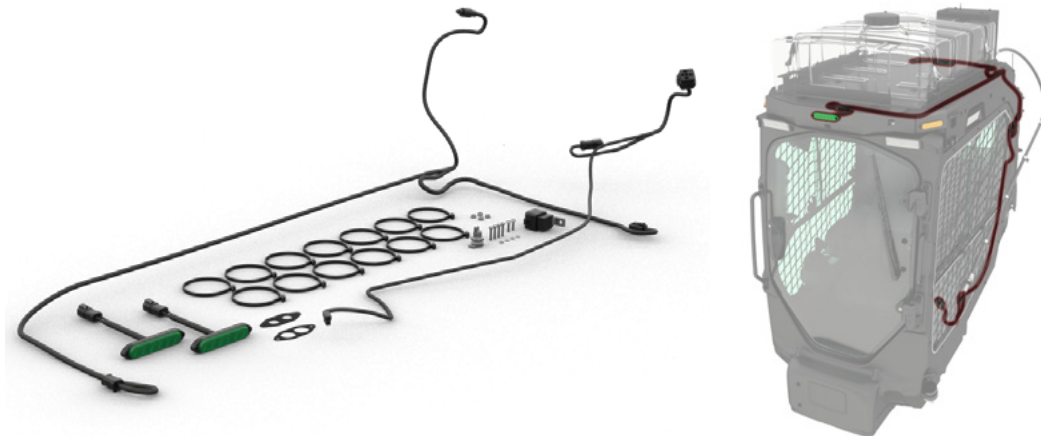
Green LED seat belt indicator beacon with magnetic base for easy mounting to the top of cab. Operates when key switch is in “On” position and the seat belt is buckled. Requires 3 Point Seat Belt or Seat Belt with Indicator (sold separately).



Product	Model	Type	Part Number	Install Instructions	Estimated Install Time
SSL, CTL	All	Green Lens – Strobe Light	625-9407	M0158047	45 minutes
		Clear Lens – Steady-on Green Light	654-3722	M0171571	

Seat Belt Indicator Lights Kit

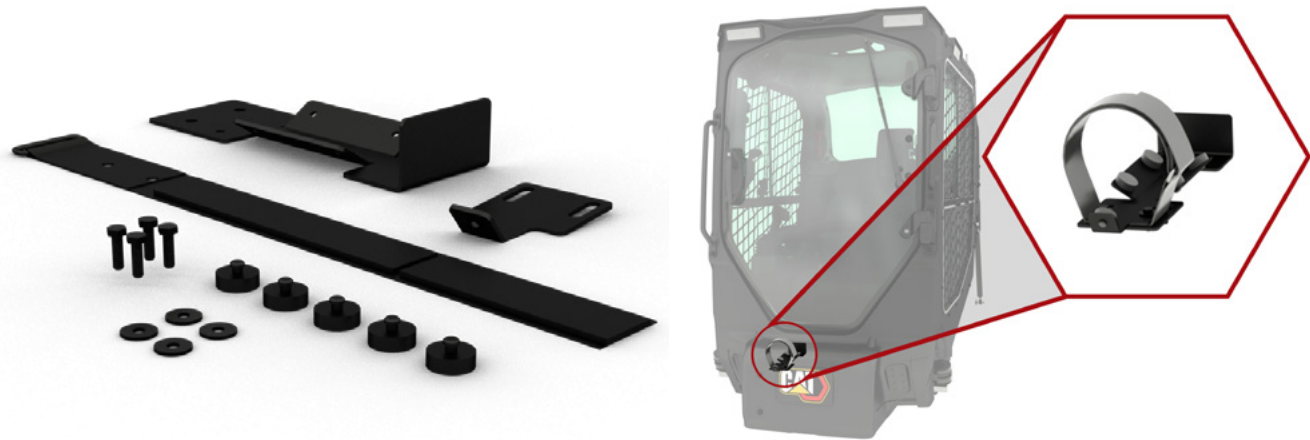
Kit provides two green seat belt indicator lights (strobe) to be mounted in front and rear surfaces of the FOPS LEVEL 2 or the Roof Mounted Attachments Bracket. Requires 3 Point Seat Belt or Seat Belt with Indicator (sold separately). Also requires FOPS Level 2 or Roof Mounted Attachments Bracket (sold separately).



Product	Model	Type	Part Number	Install Instructions	Estimated Install Time
SSL, CTL	All	Clear Lens – Green Strobe Light	612-6872	M0158049	1.5 hours

Cab Fire Extinguisher Mount Kit

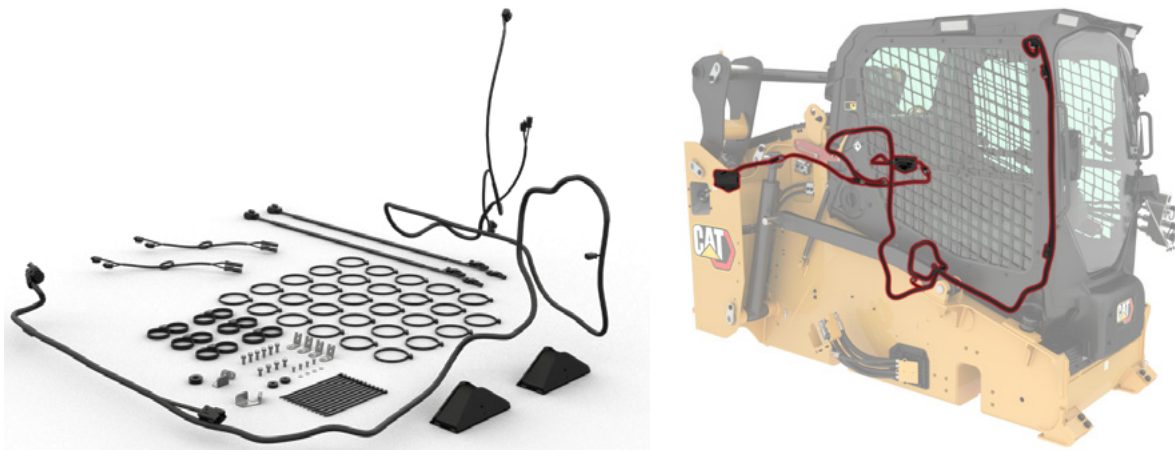
Kit provides in-cab mounting bracket that can accommodate up to a 2.26 kg (5 lb) fire extinguisher.



Product	Model	Part Number	Install Instructions	Estimated Install Time
SSL, CTL	All	642-8875	M0163271	10 minutes

Side Cameras Kit

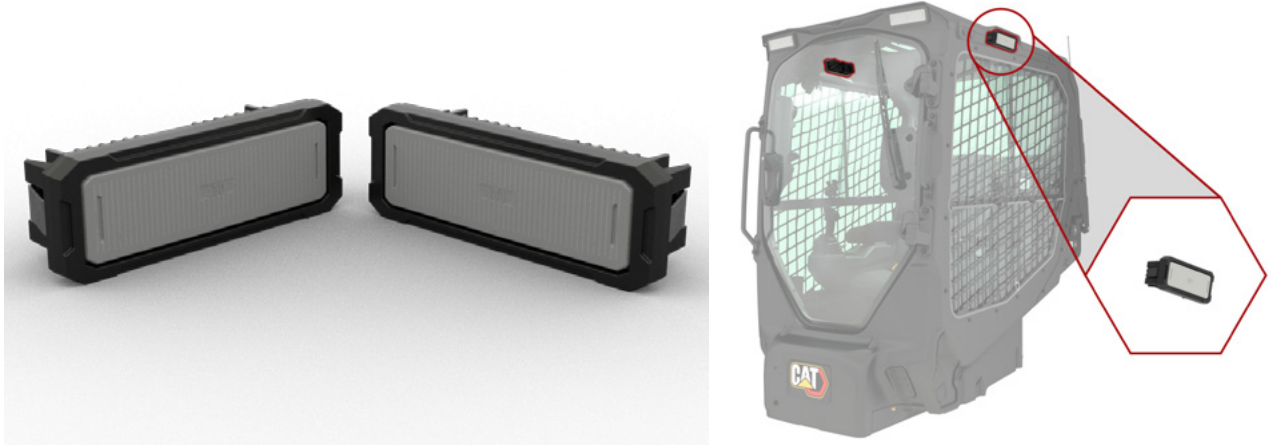
Kit provides two cameras and hardware to mount the side-view cameras. Cameras provide enhanced visibility to the sides of the machine, specifically behind the tracks/tires. Requires Advanced Touchscreen Monitor. Cannot be used with Open Canopy or External Fuel Tanks.



Product	Model	Part Number	Install Instructions	Estimated Install Time
SSL, CTL	250, 255, 260, 265	640-7174	M0161229	3.5 hours
	270, 270 XE, 275, 275 XE, 285, 285 XE	640-7175	M0161231	

LED Side Lights Kit

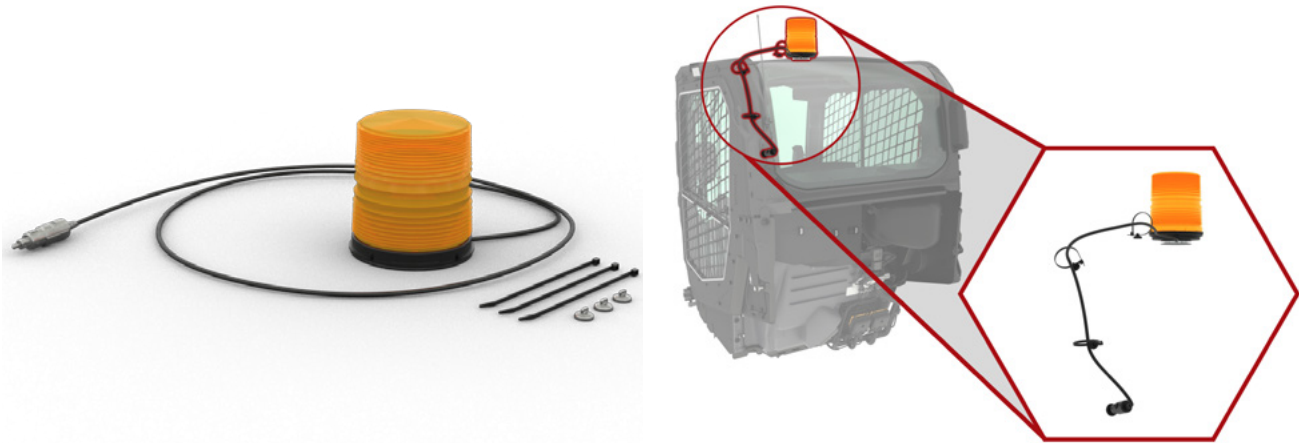
Kit provides two LED lights which can be installed in the mounting locations on the side of the cab structure. The LED side lights provide additional light coverage for the areas alongside of the machine, enhancing visibility in low light applications.



Product	Model	Part Number	Install Instructions	Estimated Install Time
SSL, CTL	250, 255, 260, 265, 270, 275, 285	640-7176	M0161233	5 minutes

Warning Beacon Kit

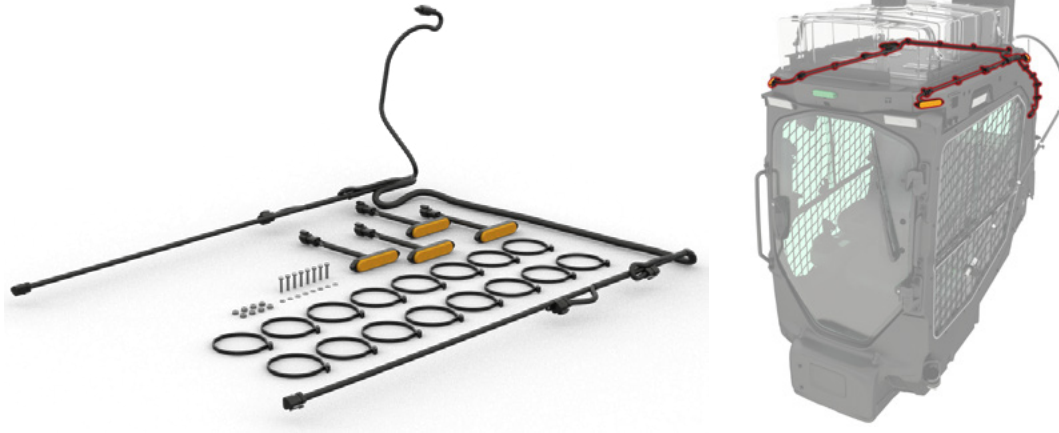
Amber LED (warning) strobe beacon with magnetic base for easy mounting to the top of cab. Operates when key switch is in "On" position.



Product	Model	Part Number	Install Instructions	Estimated Install Time
SSL, CTL	All	625-9406	M0158043	5 minutes

Warning Lights Kit

Kit provides four amber warning lights (strobe) to be mounted in the four corners of the FOPS LEVEL 2 or the Roof Mounted Attachments Bracket. Operates when key switch is in "On" position. Two additional lights can be purchased separately if a total of six lights are desired. Requires FOPS Level 2 or Roof Mounted Attachments Bracket (sold separately).



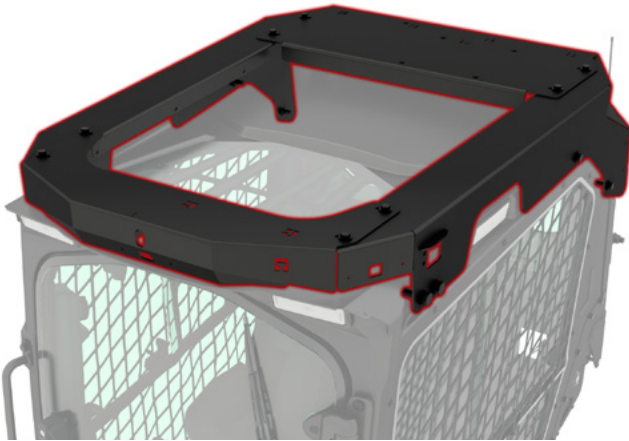
Product	Model	Part Number	Install Instructions	Estimated Install Time
SSL, CTL	All	612-6870	M0158045	30 minutes

COMPATIBILITY MATRIX

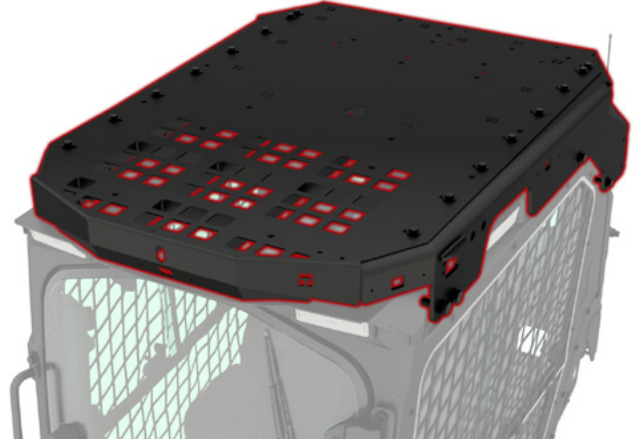
Roof Mounting System

The table below outlines the compatibility of each roof mounted accessory with the standard cab and each of the roof mounting system offerings.

Roof Mounted Attachments Bracket



FOPS Level 2



Feature	Standard Cab	Roof Mounted Attachments Bracket	FOPS Level 2
Auxiliary Hydraulic Oil Cooler			X
Water Tank			X
Cat Command (Remote Control)			X
Single Point Lift			X
Rear Window Guard			X
Powered HVAC Pre-Cleaner		X	X
Powered HVAC Pre-Cleaner Guard		X	X
Four Point Lift	X		X
Warning Beacon	X	X	X
Warning Lights		X	X
Seatbelt Indicator Beacon	X	X	X
Seatbelt Indicator Lights		X	X
High Mounted Front Camera and Display	X	X	X

