



# R2900 XE UNDERGROUND LOADER RIG OUT CATALOG

UPGRADE, REPAIR & REBUILD KITS

LET'S DO THE WORK.™



## CONTENTS

### UPGRADE KITS

REMOTE CONTROL KITS.....	3
PRODUCT LINK ELITE.....	4
CPM PAYLOAD.....	4
AUTODIG.....	5
SEAT BELT REMINDER.....	5
RADIATOR ALTERNATIVE.....	6
TIRE PRESSURE MONITORING.....	6
QUIET STIC STEERING VALVE.....	7
ENGINE PRECLEANER.....	7
DIESEL PARTICULATE FILTER (DPF).....	8
WHEEL CHOCKS.....	9
AUTOLUBE.....	10
CAB AIR FILTER.....	11

### SAFETY AND VISIBILITY

CENTRALIZED LOCKOUT AND SERVICE PANEL.....	13
HANDRAILS.....	13
CAMERA.....	14
SERVICE PINS.....	15
LINK PIN.....	15
HITCH & CONTROL PINS.....	16
FAST FILL FUEL.....	16
HIGH SPEED FLUID DRAIN.....	17
RECOVERY HOOK (TOW).....	18
LED LIGHTS.....	19
SERVICE BAY AND TRUCK LOADING LIGHTS.....	20
LIGHT GUARD (PERSPEX).....	21
DUAL PANE WINDOWS.....	21
CAB WEAR BARS.....	21
MUDGUARDS (FENDERS).....	22

### REPAIR & REBUILD KITS

ACCUMULATOR SEAL.....	25
AFTERTREATMENT.....	25
ALTERNATOR REPAIR.....	25
BRAKE PEDAL VALVE.....	25
CAB: WIPER BLADE.....	25
SEAL KITS.....	26
FILTER KIT FOR FUEL CAP.....	27
FUEL DRAIN KITS.....	27
HYDRAULIC PUMP.....	27
INJECTOR HARNESS WIRING KIT.....	27
PILOT FILTER SEAL.....	27
SOLENOID KITS.....	27
STARTER REPAIR.....	28

### ENGINE REBUILD

GASKET & SEAL.....	29
--------------------	----

### ELECTRICAL CONNECTORS

DT CONNECTORS.....	30
--------------------	----

### MAINTENANCE

CAT GREASES.....	31
COOLANTS.....	31

### BUCKETS AND GET

BUCKETS.....	33
DURILOCK™ LIP SHROUD SYSTEM.....	34
BOLT ON HALF-ARROW GET.....	35
MODULAR SEGMENT SYSTEM.....	35

THE

# CAT® R2900 XE

ENGINE POWER: 335kW / 449HP (EUV); 333kW / 447HP (Tier 2)

BUCKET CAPACITIES: 7.4 - 9.8 m³ (9.7 - 12.8 yd³)

PAYLOAD: 18 500 kg / 40,785 lb



The R2900 XE Diesel-electric loader is highly productive and durable with Instant machine response, improved digging performance and stronger frame.

#### REDUCED MAINTENANCE and REPAIR

- Diesel Electric drive, significant reduction in maintenance and repair costs.
- Stronger frame increases durability.
- Traction control greatly reduces tire spin.
- Increased component lives and extended service intervals
- Redesigned lift arm and components geometry with new bucket design and load sensing hydraulic pumps

#### SUPERIOR PRODUCTIVITY

- 18.5 tonne payload, 3-4 pass match with Cat AD63 truck
- Instant machine response, quicker acceleration and reduced cycle times
- Greater tonnes per litre and more fuel efficient (load & carry)
- Improved safety features

Disclaimer: The figures quoted compared to CAT R2900G are an indication only and can vary greatly by site dependent on application, maintenance and fuel consumption.



## REMOTE CONTROL KITS

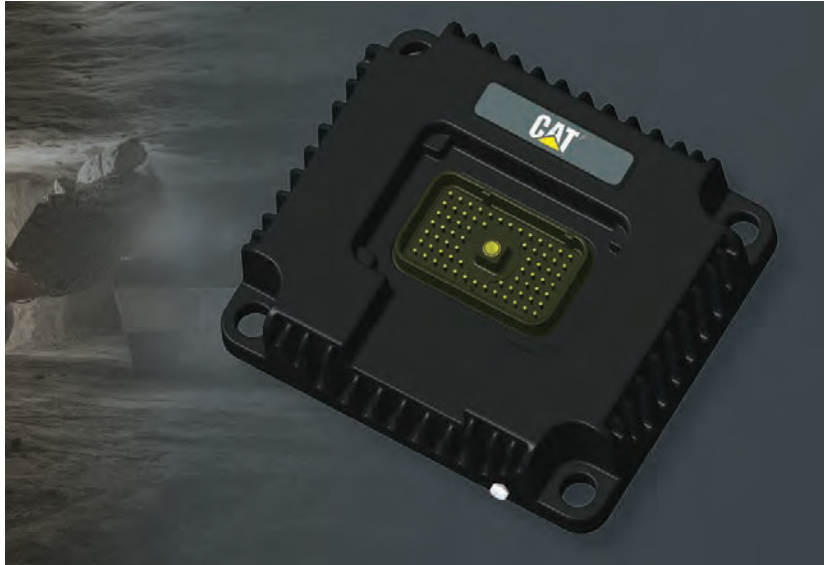
Over the shoulder remote console. The ergonomic console has been designed to resemble the in-cab controls, which reduces training and time to reorient when switching between the console and traditional in-cab operation. This enables line-of-sight remote control, increasing safety by removing operators from hazardous environments to safer locations with less risk. Critical machine health events are visible to the operator on the colour LCD display. Includes access cards, shoulder hook, 2 x batteries with 12VDC and 110/240VAC chargers.

NUMBER	NAME	DESCRIPTION	SI / REFERENCE #
506-8756	CONTROL AR	CAT® line of sight remote receiver - installed on the machine and plugged into the remote interface. Part of the CAT LOS remote solution is that it pairs with the CAT LOS remote console transmitters. Direct integration with machine electronics provides quick response access to all operational features, and notifications of critical machine health parameters. REQUIRES: 496-2856 INSTALLATION AR	M0164421
506-8757	CONTROL AR	Provides wireless communication from the machine systems to off board site networks. The CAT Wi-Fi radio provides a modular solution for underground Health and Command technologies.	M0164421
<b>SELECT REQUIRED REMOTE OPERATOR CONSOLE</b>			
557-3851	COMMAND CONSOLE LOS STD	Transmitter Kit: Standard joystick configuration for implement and motion control	—
557-3852	COMMAND CONSOLE LOS ALT1	Transmitter Kit: Alternative implement and standard motion control	
557-3853	COMMAND CONSOLE LOS ALT2	Transmitter Kit: Alternative implement and alternative motion control	



## PRODUCT LINK™ ELITE

Product Link™Elite system boosts connectivity and increases the availability of data provided by the R2900 XE. The on-board hardware enables the loader to collect and transmit information into locally hosted or cloud-hosted applications such as MineStarHealth Office, Health Equipment Insights, Equipment Care Advisor or Vision Link. The system opens the door for industry leading equipment health and condition monitoring services from Caterpillar and your local Cat dealer. PLE must be configured to meet site specific requirements. Review Special Instruction M0086729 "Installation Guide for Product Link Elite for Mining Applications".



NUMBER	NAME	DESCRIPTION	SI / REFERENCE #
494-6472	CONTROL GP	Product Link enables the remote transmission of information about the operation, and condition of your equipment	REN7911



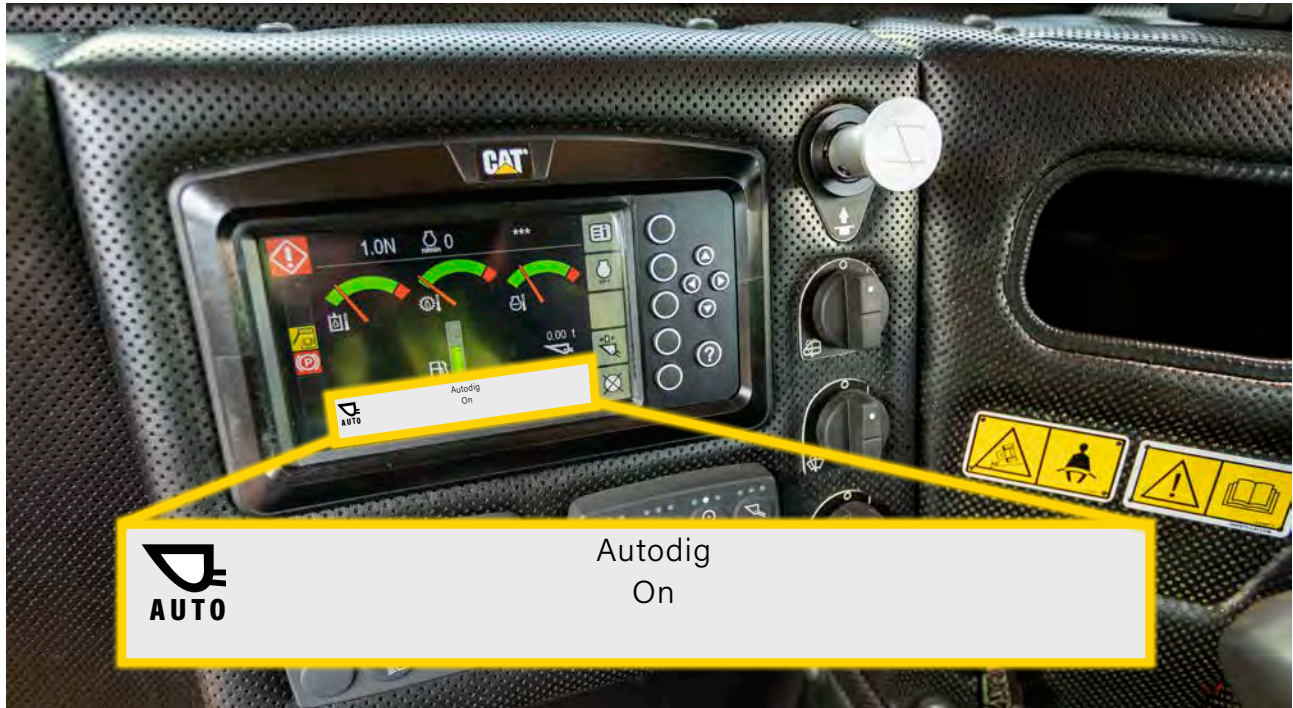
## CPM PAYLOAD

Cat® Production Measurement is a productivity enhancing Cat® Connect PAYLOAD technology that helps operators consistently deliver payloads with world-class weighing precision, in line with the leading payload scale specialists. CPM includes an integrated onboard payload weighing scale with material management, cycle count & time recording and wireless production detail reporting capability. Payload & cycle totals can be sent wirelessly (requires OP-4689 PRODUCT LINK™, WI-FI)

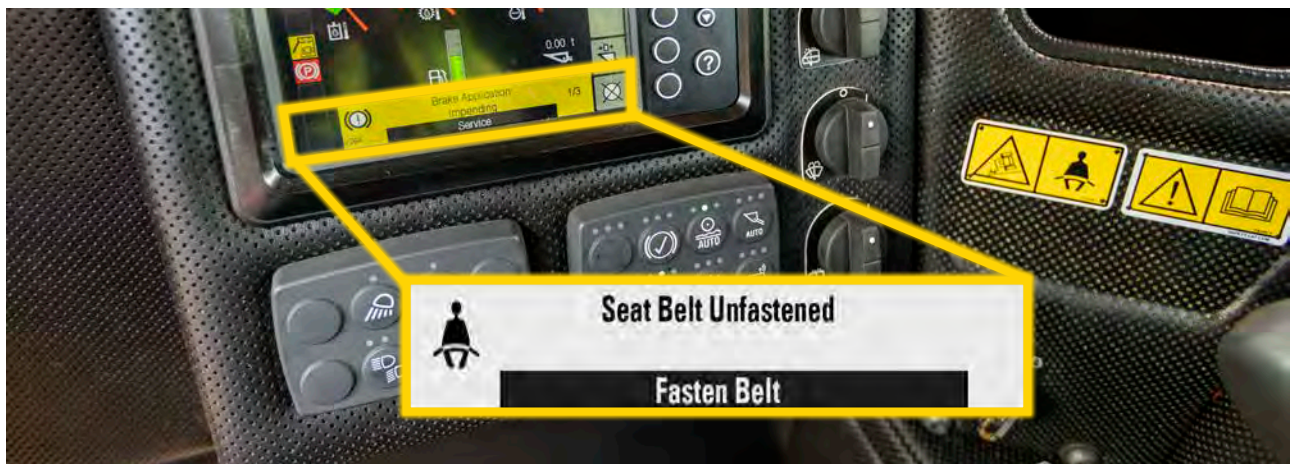
NUMBER	NAME	SI / REFERENCE #
472-8741	CPM PAYLOAD SOFTWARE	M0160275

## AUTODIG

Autodig is a software enabled attachment that controls the implement system during the bucket loading portion of a cycle to automatically load material. Ideal for inexperienced operators and remote machine operation.



NUMBER	NAME	SI / REFERENCE #
472-8744	CONTROL AR	M0159115 M0116019 – Operation Section – Autodig System



## SEAT BELT REMINDER

The Cat® Seat Belt Reminder for operator seats provides both an audible and visual warning to remind the operator when the seat belt is not latched when the parking brake is off and the machine begins to move.

NUMBER	NAME	SI / REFERENCE #
513-5984	Installation Group	REHS7361
500-8869	Light & Alarm	

## RADIATOR ALTERNATIVE

Radiator featuring a modular design with individual tubes that can be serviced independently to reduce maintenance. More resistant to clogging, which allows increased duration between cleanouts/servicing.



NUMBER	NAME	SI / REFERENCE #
506-8703	Radiator Gp	M0132175 Cooling System Package



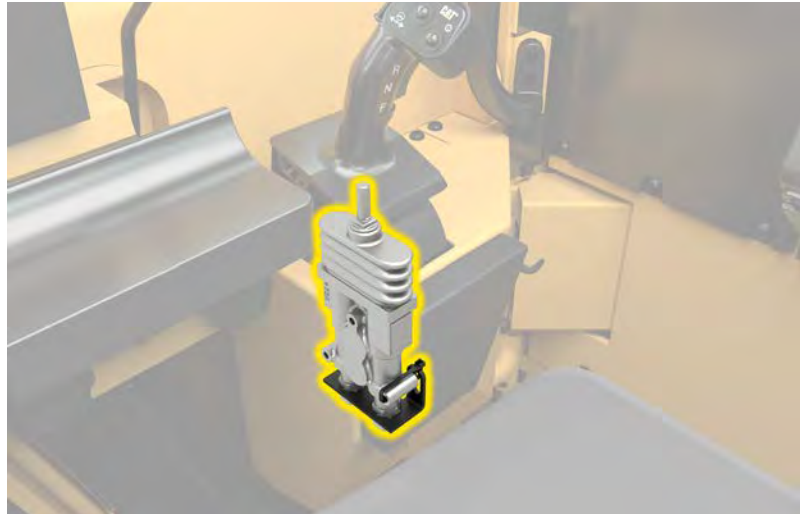
## TIRE PRESSURE MONITOR

Tire pressure monitoring system (TPMS) provides early warning of pressure loss in one or more tires. Wireless sensors inside each tire provide real time, temperature compensated pressure values, and will trigger alerts to the operator in the event of under inflation or rapid decompression. Compatible with Electronic Technician and Product Link™.

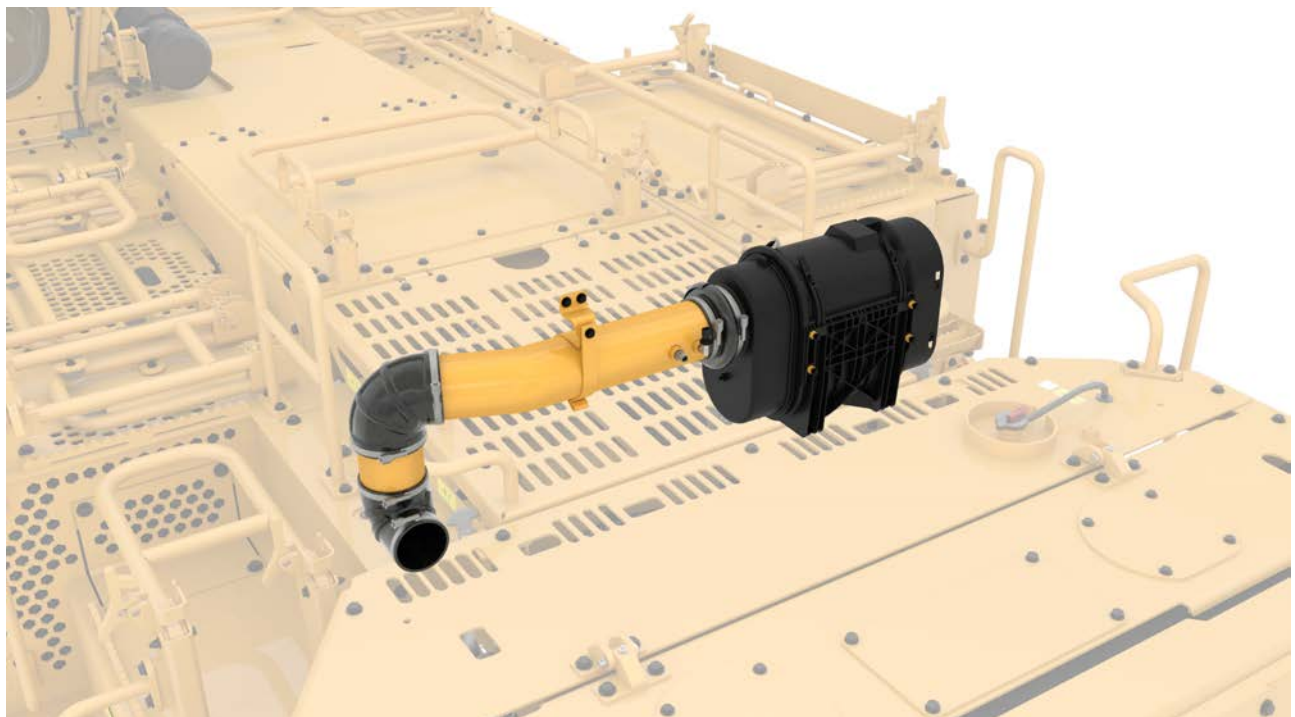
NUMBER	NAME	SI / REFERENCE #
506-8741	Control AR	M0074184, REHS9135

## QUIET STIC STEERING VALVE

The new quiet STIC steering valve significantly reduces operator sound levels achieving quieter steering operation while maintaining the same feel for the operator.



NUMBER	NAME	SI / REFERENCE #
585-2503	VALVE GP-PILOT	M0152021 - SYSTEMS OPERATIONS - PILOT VALVE (STIC STEERING)



## ENGINE PRECLEANER

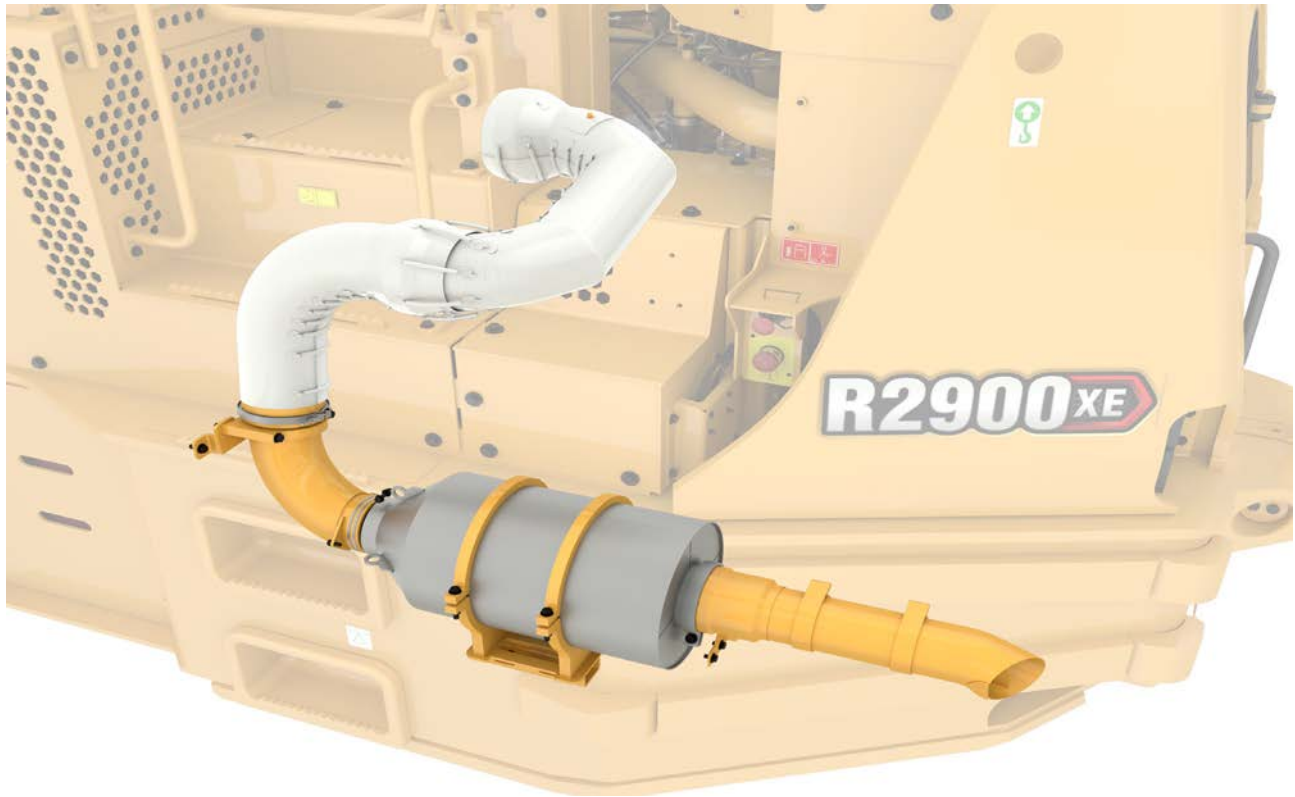
The Efficient Power Core air cleaner improves the life of the primary and secondary air filters.

\*FUW 506-8533 and 506-8691 Installation Ar-Engine

NUMBER	NAME	SI / REFERENCE #
559-1101	CLEANER GP-AIR	M0116019 - MAINTENANCE SECTION - ENGINE AIR PRECLEANER
570-4441	CLEANER GP-AIR	

## DIESEL PARTICULATE FILTER (DPF)

A diesel particulate filter with flow thru technology, designed for the Tier 2 engines. The filter compliments the engine by reducing diesel particulate matter.

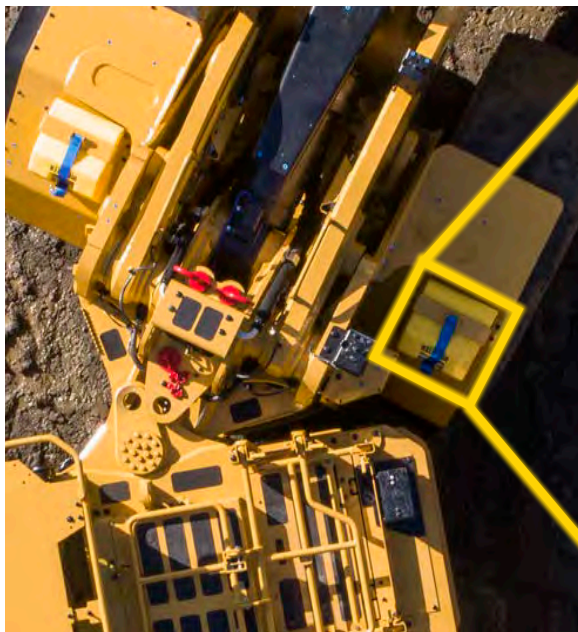


NUMBER	NAME	SI / REFERENCE #
625-6745	EXHAUST GP-PURIFIER	



## WHEEL CHOCKS

Provides wheel chocks and storage solution on machine. Wheel chocks are designed to prevent stationary vehicles from shifting or moving. Especially on a grade.



NUMBER	NAME	SI / REFERENCE #
608-2390	CHOCK GP-WHEEL	M0116019 - OPERATOR SECTION - USE OF WHEEL CHOCKS

# AUTOLUBE

The optional Cat® Auto Lube System provides precise, automatic lubrication of pins and bushings while the machine is in operation. Automatic lubrication reduces time spent on daily maintenance and downtime for unplanned repairs due to insufficient greasing. This helps to increase productivity while driving down owning and operating costs.



## AUTOLUBE

Provides an automated and controlled system to dispense lubrication. Automatic central lubrication system with integrated monitoring and diagnostics that is fully integrated into the machine and all lines are prefilled with grease. Integrated Auto lube extends component and service life. Pumps are designed to be out of the way to stay protected, while still allowing ground level refilling.



NUMBER	NAME	SI / REFERENCE #
506-8693	LUBRICATION AR	M0157568

## FILTER, HEPA

High efficiency Cabin air filters are recommended where HEPA H13 level of filtration is required. Filter meets improved efficiency of dust type.

FUW 589-4222 Pressurizer Gp



NUMBER	NAME	SI / REFERENCE #
592-7464	FILTER-CAB AIR	M0116019 – Maintenance Section – Cab Air Filter



# SAFETY AND VISIBILITY

## IMPROVED COMFORT

In addition to an ergonomic seat and controls, the R2900 XE operator environment includes many features designed to enhance comfort and decrease fatigue. The enclosed design provides fresh, pressurized, temperature-controlled air circulation with air conditioning for a more comfortable working environment.

## DESIGNED FOR SAFETY

With two emergency exits, optional rear and side view cameras, and improved visibility, the R2900 XE cab is built with the safety of your people in mind. Rollover Protective Structure (ROPS) and Falling Objects Protective Structure (FOPS) are resiliently mounted to the frame to isolate the operator from vibration for a more comfortable ride. The operator presence system helps ensure the safety of anyone working in, on or around the machine by preventing machine motion with no operator in the cab.

## INFORMATION DISPLAYS

A high-resolution display gives operators real-time system information in 11 different languages, keeping them up to date on performance and machine status even before the engine starts. The display can be integrated into your mines communications network and comes ready for Product Link™Elite data analysis and Cat® MineStar™ connectivity.

## DESIGNED FOR CONTROL

The R2900 XE operator station is ergonomically designed for total machine control. All controls, levers, switches and gauges are positioned to maximize productivity and minimize fatigue. STIC™Steering and Transmission Integrated Control provides maximum responsiveness and control that combines directional selection, virtual gears and steering into a single lever. A two-pedal design with improved spacing and position enables better foot control. Improved high and low beam lights offer auto-directional switching and automatic on and off functions. The R2900 XE's hydraulic system also improves operator control and boosts productivity. Low-effort electric-over-hydraulic joystick implement controls feature simultaneous lift and tilt functions to optimize operating efficiency.

## CENTRALIZED LOCKOUT AND SERVICE PANEL

For maintenance that DOES NOT require the engine to be running. Use engine shutdown switch to stop the engine from the ground level. Battery disconnect switch provided to deactivate the electrical system. Use emergency stop switch to stop the machine from the ground level. The engine will stop, the parking brake will engage, and the implement and steering control will disable.



NUMBER	NAME	DESCRIPTION	SI / REFERENCE #
506-9882	PANEL GP-ELECTRONIC	GROUND LEVEL SERVICE AND MAINTENANCE SWITCHES	M0116019 – OPERATION SECTION - BATTERY, EMERGENCY STOP, ENGINE SHUTDOWN, ENGINE LOCKOUT
506-8740	WIRING GP (SHUTDOWN)	LOCKABLE ISOLATION POINT THAT ISOLATES THE STARTER MOTOR TO PREVENT THE MACHINE FROM STARTING	
587-2978	ISOLATOR KIT (YELLOW)	STARTER MOTOR ISOLATION KIT	
587-3096	ISOLATOR KIT (RED)	BATTERY ISOLATION SWITCH KIT	

## HANDRAILS

Handrails provide extra protection for personnel when accessing the top deck of the machine.



NUMBER	NAME	SI / REFERENCE #
506-8758	HANDRAIL GP	M0116019 - OPERATION SECTION - HANDRAILS
574-5297		
522-8184		
650-4320		
585-1152	HANDRAIL AS	



## REAR/FRONT VIEW CAMERAS

Forward facing offboard camera and in cab display: Allows operator vision to the offboard side of bucket and right hand side front tyre. Display is mounted forward facing in cab.

REQUIRES: 506-8706

CANNOT BE USED WITH: 602-7432

Rearward facing offboard camera: Allows operator vision to the offboard side of the rear frame.

REQUIRES: 506-8706, 583-7842, 506-8719, 634-4909

CANNOT BE USED WITH: 602-7432

Reverse camera: Allows operator vision to the rear of the machine to aid reversing.

REQUIRES: 583-7842, 602-7432

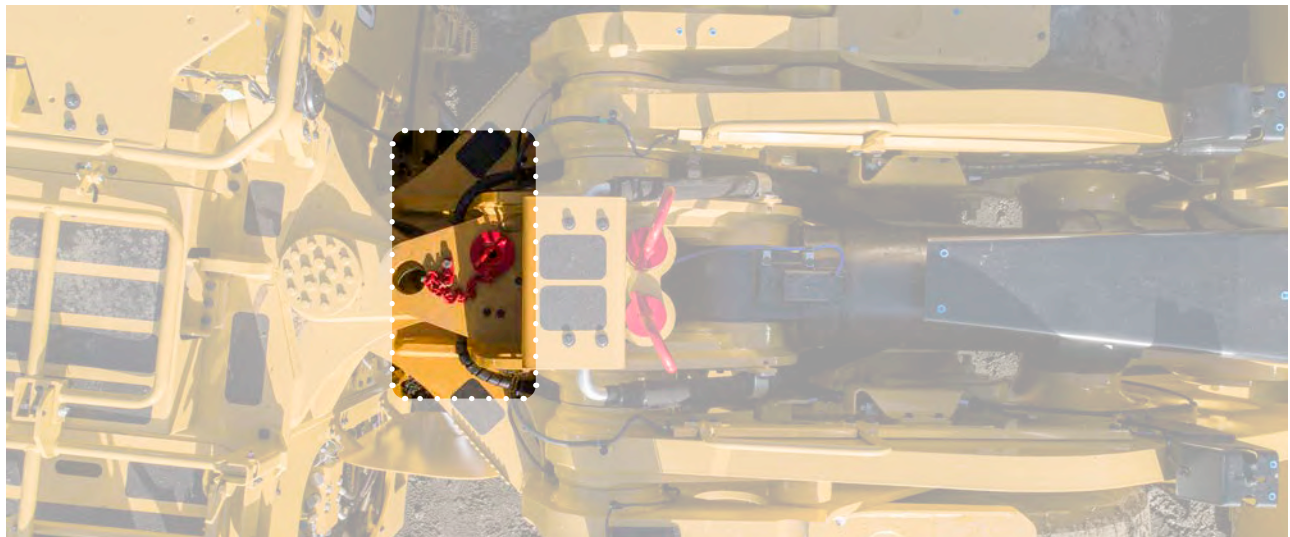
NUMBER	NAME	SI / REFERENCE #
506-8719	MONITOR AR (FRONT HYD TANK)	M0116019 - OPERATION SECTION - CAMERA
506-8698	WIRING GP-CAMERA (REAR HYD TANK)	
634-4909	WIRING GP-CAMERA (REAR FACING)	



## SERVICE PINS

Bucket control group safety pins allow maintenance personnel to safely service the loader with the bucket lift arms raised.

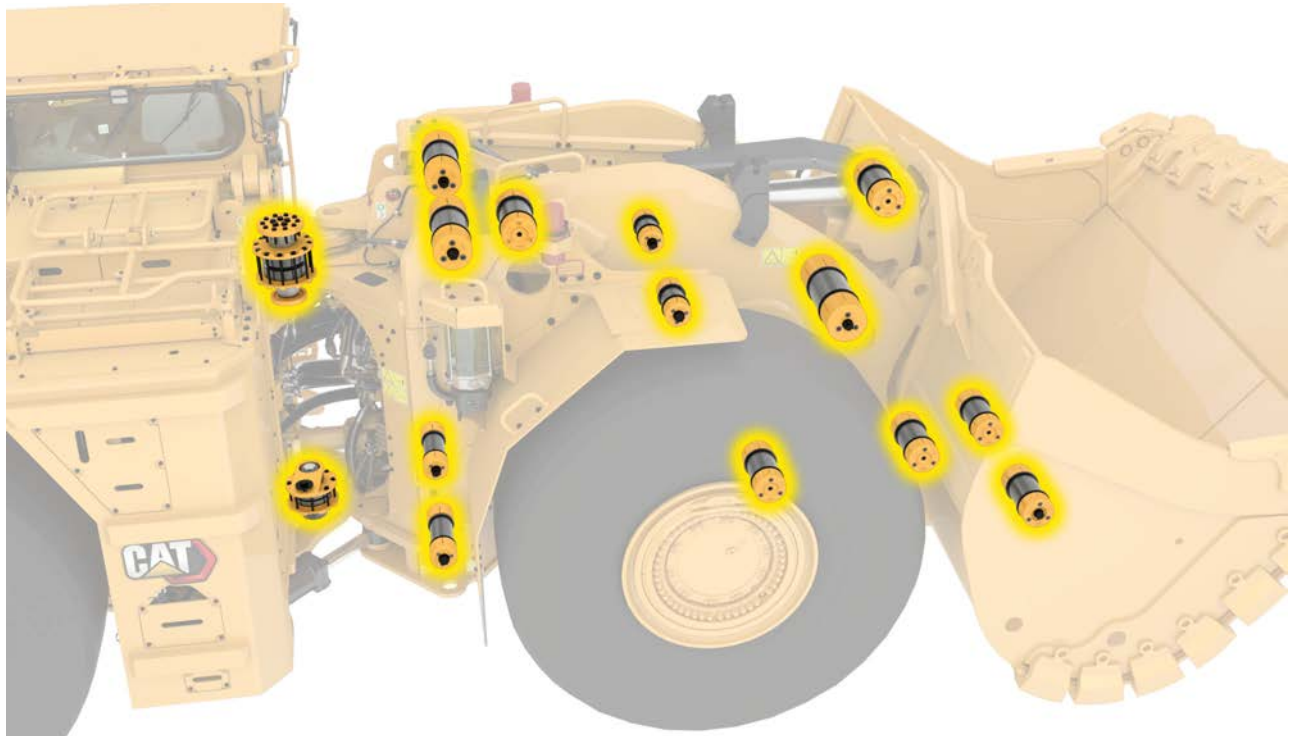
NUMBER	NAME	SI / REFERENCE #
506-8696	SERVICE GP-INNER	M0116019 - OPERATION SECTION - LIFT ARM SUPPORT PINS



## LINK PINS

The articulation lock pin allows maintenance personnel to safely service the loader near the articulation joint.

NUMBER	NAME	SI / REFERENCE #
600-6393	LINK GP	M0116019 - OPERATION SECTION - STEERING FRAME LOCK



## HITCH ARTICULATION AND CONTROL PINS

Cat® linkage pins are designed to meet strict standards and are quality tested to ensure more time between replacements, which means less downtime and more savings.

NUMBER	NAME	SI / REFERENCE #
658-4606	HITCH GP	M0131653 - ARTICULATING HITCH
506-9909	PIN GP-SEAL&	M0131653 - BUCKET CONTROL - PIN AND SEAL

## FAST FILL FUEL

Provides ground level gravity and ground level accessible fast fill feature with automatic shut-off for fast fill fuelling. Reduces risk of spills and over filling.



NUMBER	NAME	SI / REFERENCE #
615-3760	ADAPTER GP (FAST FILL FUEL)	—



## HIGH SPEED FLUID DRAIN

Fast Fill and Evacuation ports reduce daily maintenance times. Service points are located at individual points on the machine, NOT in a centralized service center.

NUMBER	NAME	SI / REFERENCE #
506-8725	DRAIN	





## RECOVERY HOOK (TOW)

A bolt on system, the brake release system is used to recover the machine from a stope or dangerous area. If the parking brake is engaged due to a machine fault, the brake release system can be used to disengage the parking brake to enable the machine to be towed. Includes Brake Release & Fixed Rear Mounted Protective Plate and Hook Arrangement.

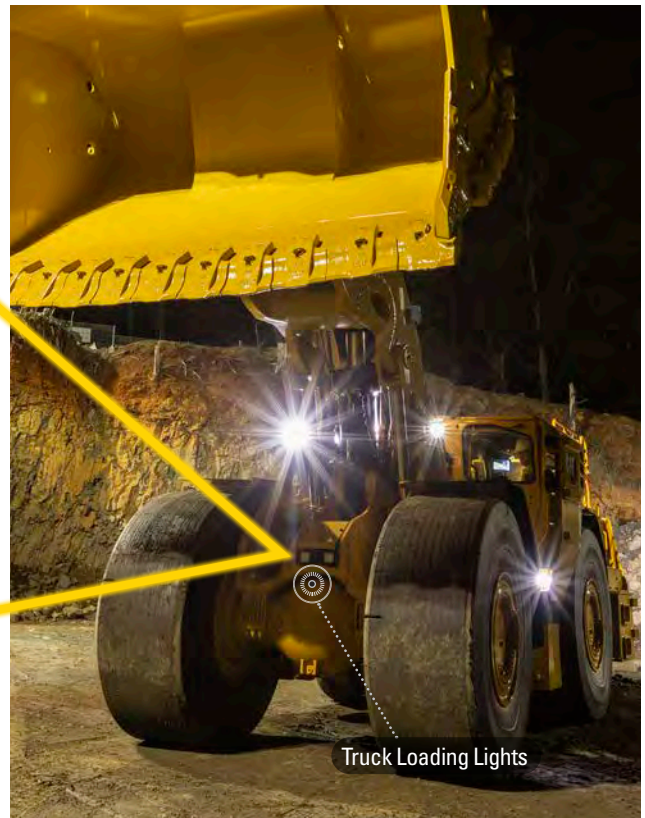
NUMBER	NAME	SI / REFERENCE #
506-8529	BRAKE AR (INTERNATIONAL)	M0116019 - OPERATION SECTION - BRAKE RELEASE
506-8530	BRAKE AR (US)	



## LED LIGHTS

EU compliance Hi/Low beam, LED standard finment, Manual or Auto Directional Switching mode, RHS upper cab light.

NUMBER	NAME
506-9874	LIGHTING GP-FLOOD (HIGH BEAM)
506-9875	LIGHTING GP (LOW BEAM)
506-9873	LIGHTING GP-LED (REAR)
586-9380	LIGHTING GP (CAB)



## SERVICE BAY AND TRUCK LOADING LIGHTS

Light mounted to cab to illuminate the service bay area. Dual light group including guard surround, mounted on the front of the NEEF to better illuminate the work area when truck loading.

NUMBER	NAME
484-9708	LIGHTING GP-SERVICE
506-8730	LIGHTING GP (TRUCK LOADING)



## LIGHT GUARD (PERSPEX)

Clear perspex light protectors for lift arm and NEEF lights.

NUMBER	NAME
472-0658	GUARD GP-LIGHT



## DUAL PANE WINDOWS

Provides improved cabin insulation for extreme ambient temperatures and noise reduction, also with rear blanking plate for frequent cabin impact applications.

NUMBER	NAME
506-8762	WINDOW GP
506-8708	WINDOW GP (W/BLANKING)

Cab »



Hydraulic Tank »



Radiator »



## CAB WEAR BARS

Bars mounted to side of the machine to provide extra abrasive wear protection.

NUMBER	NAME	SI / REFERENCE #
589-3981	BAR GP-WEAR (CAB)	Bars mounted to side of cab to provide extra abrasive wear protection
506-9889	PLATE GP (HYD TANK WEAR BAR)	Bars mounted to the hydraulic tank guard to provide extra abrasive wear protection
592-7555	PROTECTOR GP (RADIATOR)	Plates added to the rear outer sides of the machine, to provide additional protection to the radiator from wall impacts (Bat Wings)

## MUDGUARDS (FENDERS)

Prevents tire debris from getting on the cab, platform and steps.

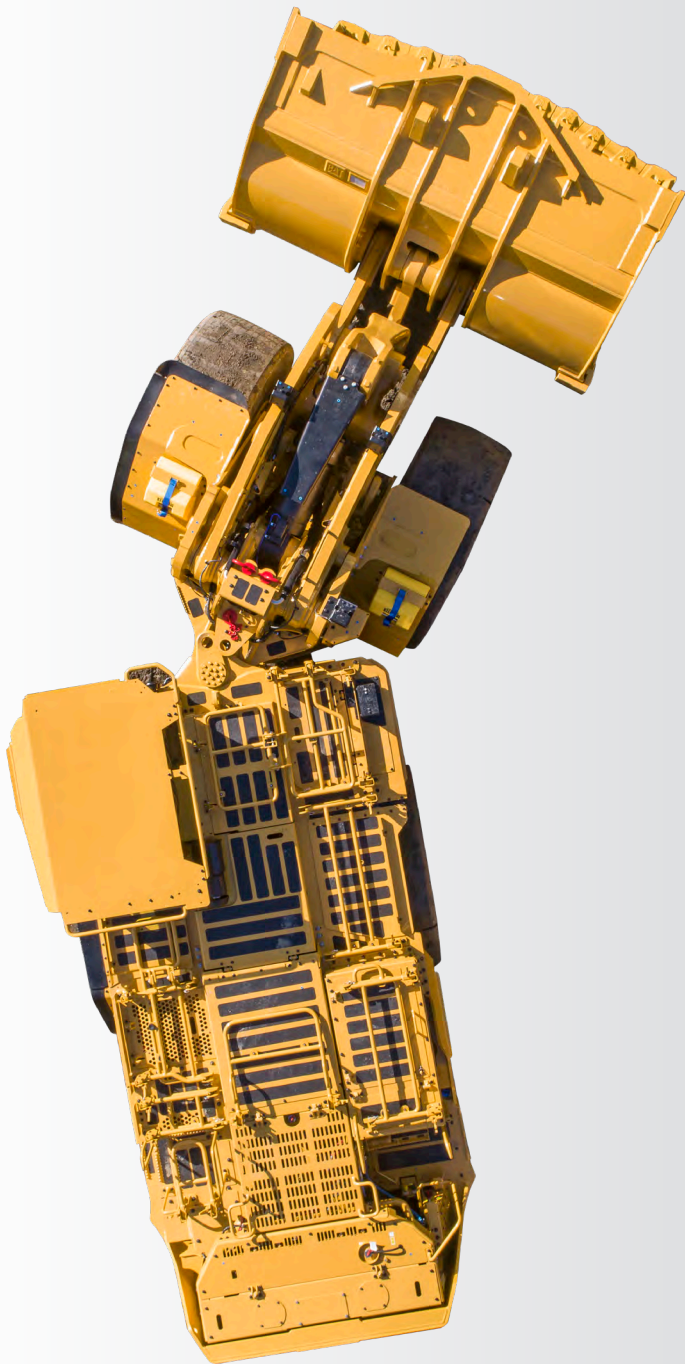
NUMBER	NAME	SI / REFERENCE #
631-7497	FENDER GP-REAR	
631-7498	FENDER GP-FRONT	



# R2900

## REPAIR & REBUILD KITS

Cover essential elements of underground loader maintenance with these convenient repair and rebuild kits.





## ACCUMULATOR SEAL KITS

NUMBER	NAME	DESCRIPTION
353-7539	PISTON KIT	6" Seal Kit with Standard Seal
450-9200		6" Piston Kit with Extreme Seal

## AFTERTREATMENT KITS

NUMBER	NAME	DESCRIPTION
582-7467	FILTER KIT	DPF Filter Kit
20R-3666		Reman Filter Kit for 582-7467
20R-8034		Reman Filter Kit for 582-7467
390-0666	INLET AS KIT	Inlet Kit for DPF Filter
390-0677	OUTLET AS KIT	Outlet Kit for DPF Filter
473-5508	STRAP KIT	Contains hardware for DPF Tank Strap

## ALTERNATOR REPAIR KITS

NUMBER	NAME	DESCRIPTION
478-4961	COLLAR KIT	Repair Kit for Alternator (Bearing)
478-4963	HARDWARE KIT	Repair Kit for Alternator (Hardware)
478-4964	TERMINAL KIT	Repair kit for Alternator (terminal - holder assembly, plate, insulation, pin, grommet, and nut)
478-4967	TERMINAL KIT	Repair kit for Alternator (terminal - insulation, washers, and nut)
478-4962	BEARING KIT	Repair Kit for Alternator (Bearing)

## BRAKE PEDAL VALVE

NUMBER	DESCRIPTION
117-7799	Brake Pedal valve repair seal kit
227-6783	Pedal Pin Repair Kit
276-3239	Throttle Pedal Repair Kit
300-4868	Kit-Roller Pin

## CAB: WIPER BLADE

NUMBER	DESCRIPTION
6V-5851	Wiper Blade replacement
128-5040	Wiper Blade replacement
226-6545	Wiper Blade replacement

## SEAL KITS

NUMBER	DESCRIPTION
1G-5928	Seal Kit: Pilot Valve for Steering
120-9051	Seal Kit: Hydraulic Oil Cooler Relief Valve
133-5545	Seal Kit: Main Hydraulic Control Relief Valve
166-0321	Seal Kit: Control Valve for Parking Brake
224-7135	Seal Kit: Valve Cartridge for Steering
238-9842	Seal Kit: Main Hydraulic Control Relief Valve
239-5157	Seal Kit: Main Hydraulic Control Check Valve
239-6336	Seal Kit: Main Hydraulic Control Relief Valve
274-6217	Seal Kit: Control Valve Seal
360-0518	Seal Kit: Brake Accumulator charging Relief Valve
383-7557	Seal Kit: Main Hydraulic Control Relief Valve
450-5799	Seal Kit: Check Valve for Steering
478-7695	Seal Kit: Brake Accumulator charging Relief Valve
552-6700	Seal Kit: Main Hydraulic Control Relief Valve
585-7892	Seal Kit: Accumulator charging Brake Cooling Relief Valve



## FUEL CAP FILTER KIT

NUMBER	DESCRIPTION
350-7735	Cat® filter kit provides a filter cartridge to prohibit water penetration into filter media of the filter assembly mounted on a fuel cap or fuel tank.

## FUEL DRAIN KITS

NUMBER	DESCRIPTION
432-4252	Metal drain is a mechanical device used to release excess or unwanted quantities of liquid from the fuel and water separator filter.

## HYDRAULIC PUMP KITS

NUMBER	DESCRIPTION
564-9195	Kit is for servicing a failed piston pump valve. Used in the Main Hydraulic pump.
581-2550	Kit is for servicing a failed pump or rebuild/refurbish a worn pump. Used in gear pumps of secondary steering systems.
204-0157	Kit is for servicing a failed pump or rebuild/refurbish a worn pump. Used in gear pumps of axle cooling.

## INJECTOR HARNESS KIT

NUMBER	DESCRIPTION
366-9748	Service part for injector harness - allows to replace part of the harness without having to replace the entire injector harness.

## PILOT FILTER SEAL KIT

NUMBER	DESCRIPTION
369-7506	Replacement oil filter seal kit

## SOLENOID KITS

NUMBER	DESCRIPTION
136-3946	Seal Kit – Solenoid Valve 580-8332
277-8873	Seal Kit - Solenoid Valve 519-0843
332-5669	Seal Kit - Solenoid Valve 251-3268, 314-9274, 333-8242
426-4823	Seal Kit - Solenoid Valve 397-9397, 352-2734

# STARTER REPAIR KITS

NUMBER	NAME	DESCRIPTION
3N-3763	Terminal Kit	Repair kit for Starter Motor (Includes bushings and washers)
352-7994	Switch Kit	Repair kit for Starter Motor (includes: starter relay switch assembly, jump start protection cover, bolts, anchor and clamp.
533-1539	Seal Kit	Seal Kit for Starter Motor



# R2900

## ENGINE REBUILD

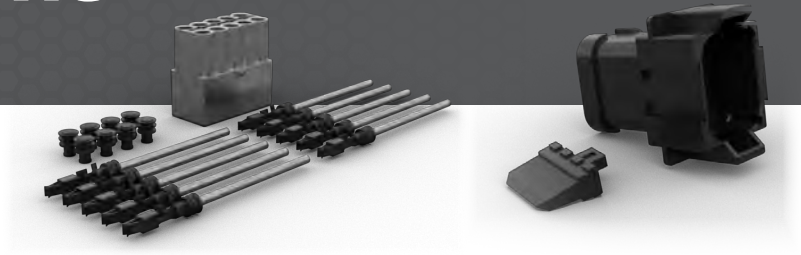


### GASKET & SEAL KITS

NUMBER	DESCRIPTION
160-9874	Single Cylinder Liner Kit
248-1394	Single Fuel Injector
563-8072	Water Pump Installation

# ELECTRICAL DT CONNECTORS

These connector kits are for replacing individual connectors for harness repairs and rebuilds. All kits contain qty of one plug or one receptacle and quantity of one of wedge part number listed.



NUMBER	PIN	PLUG	RECEPTACLE	WEDGE
102-8801	12	—	3E-5179	3E-5180
102-8802	2	—	3E-3364	3E-3365
102-8803	3	—	3E-3370	3E-3371
102-8804	4	—	3E-3376	3E-3377
102-8805	6	—	3E-3382	3E-3383
102-8806	8	—	3E-3388	3E-3389
174-3091	12	—	174-3089	3E-5180
151-9275	6	—	151-9276	3E-3383
155-2255	12	155-2252	—	155-2258
155-2256	12	155-2253	—	155-2258
155-2257	12	155-2254	—	155-2258
155-2260	3	169-8670	—	155-2276, 155-2266
155-2265	8	155-2264	—	155-2259
155-2270	2	155-2269	—	155-2261
155-2271	4	155-2272	—	155-2262
155-2274	6	155-2273	—	155-2263
160-3518	8	—	162-3046	3E-3389
174-0503	3	174-0502	—	155-2276, 155-2266
174-3091	12	—	174-3089	3E-5180
176-2947	4	176-2946	—	155-2262
176-9299	3	—	133-0973	3E-3371, 133-0975
177-9653	4	—	177-9649	177-9650
177-9656	4	177-9654	—	177-9655
190-7614	12	—	190-7612	3E-5180
190-7615	12	—	190-7613	3E-5180
237-0165	8	237-0163	—	155-2259
271-2811	12	—	271-2809	3E-5180
312-8811	12	—	312-4626	312-8810
331-4221	3	—	331-3577	3E-3371
331-4222	12	331-3578	—	155-2258

\*As a good electrical repair & troubleshooting reference, please reference Service Magazine article M0065534, found on sis2.cat.com







# MAINTENANCE

Proactive preventative maintenance extends the life of your machine and protects your investment. Only Caterpillar knows Cat® equipment's filtration and lubrication requirements and offers parts kits to match your machine's maintenance cycles.



## CAT® GREASES

Our greases are designed to get long life, world class moisture resistance, low component wear and great corrosion protection for your application.

	LITHIUM COMPLEX			CALCIUM SULFONATE COMPLEX		
Previous Cat Product Name	Cat Multipurpose	Cat Advanced 3 Moly	Cat Arctic Platinum	Cat Ultra5 Moly #1	Cat Ultra5 Moly #2	Cat Desert Gold
Current Cat Product Name	Cat Utility Grease	Cat Prime Application Grease	Cat Extreme Application Grease-Arctic	Cat Extreme Application Grease 1	Cat Extreme Application Grease 2	Cat Extreme Application Grease-Desert
Grade (NLGI)	2	2	0	1	2	2
Machine Operating Temp (deg C)	-20 to +140	-20 to +140	-50 to +130	-20 to +140	-15 to +140	10 to +140
Cartridge** 450g, 15.9oz.**	452-6015	452-6010		452-6000	452-6005	452-7458
Cartridge 390g, 14oz.	452-6011	452-6006	508-2184	452-5996	452-6001	452-6016
Plastic Pail 16kg, 35lb.	452-6014	452-6009	508-2187	452-5999	452-6004	452-6019
Keg 55kg, 120lb.	452-6013	452-6008	508-2186	452-5998	452-6003	452-6018
Drum 180kg, 400lb.	452-6012	452-6007	508-2185	452-5997	452-6002	452-6017
						

\*\* Only available in Australia and New Zealand, also refer M0116019 Lubricant Viscosities

## COOLANTS

Up to 12,000-hour (or 6-year) drain interval with an addition of Cat Extender at 6,000 hours and yearly S•O•S<sup>SM</sup> coolant sampling analysis.

CAT ELC (Contains Glycol) Premix lowers maintenance cost and ensures extended life coolant.

1 GALLON	5 GALLON	55 GALLON	275 GALLON	4 LITRE	5 LITRE	18 LITRE	20 LITRE	200 LITRE	210 LITRE	1000 LITRE
238-8648	238-8649	238-8650	361-1024	215-4245	205-6611	365-8396	205-6612	215-4242	205-6613	205-6614
				365-8395	205-6615		215-4246	365-8397	469-2719	365-8398
					469-2717		469-2718			

CAT ELI (water based, no glycol) Premix lowers maintenance costs and ensures extended life coolant.

1 GALLON	55 GALLON	1 LITRE	5 LITRE	20 LITRE	208 LITRE	1000 LITRE
351-9431	351-9433	469-2722	469-2720	351-9432	387-2878	366-2753
				387-2877		
				469-2721		

Note: To see all Coolants by Region and Coolant recommendations, search for PELJ2052 and SEBU6250 or SEBU6251.

# BUCKETS & GROUND ENGAGING TOOLS

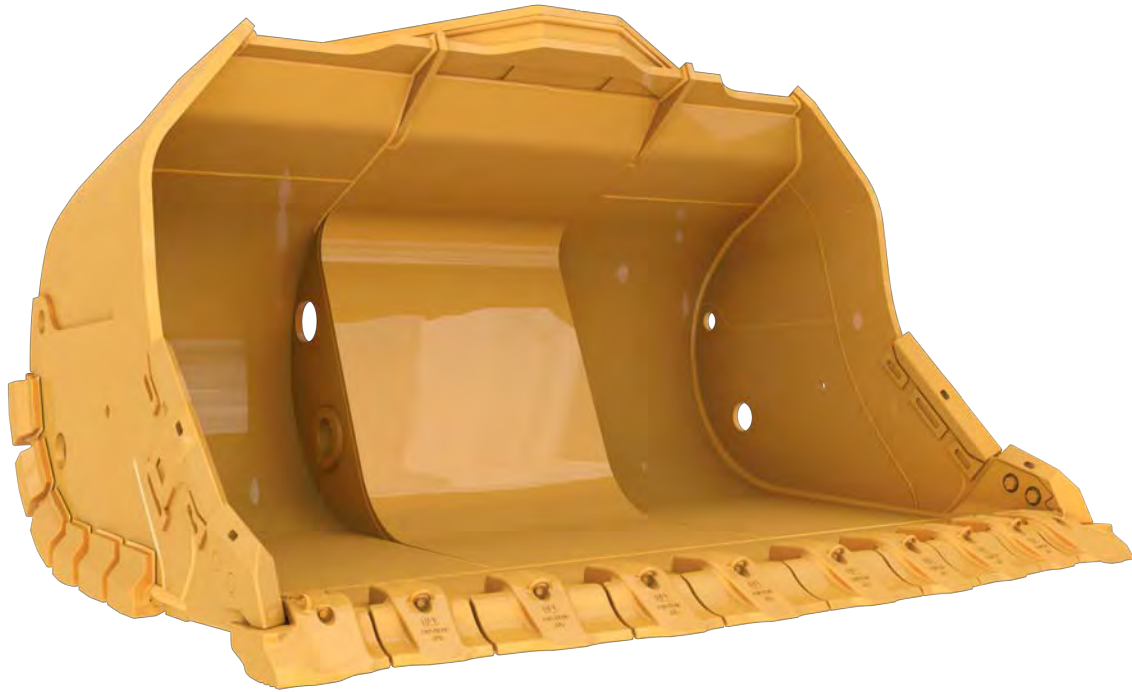




# BUCKETS »

The R2900 XE's bucket has been redesigned for increased strength and simplified serviceability. Wear bars can be replaced more easily, and the design of the bucket channels stress to areas with easy to-replace wear pads, reducing the need for welding repairs.

With 10 new wear options, the R2900 XE bucket is a flexible, reliable tool that can help your operation be more reliable and more efficient.



## R2900 – TRADITIONAL BUCKETS

NUMBER	CAPACITY
638-3510	Bucket As - 7.4m <sup>3</sup> / 9.7Yds <sup>3</sup>
638-3511	Bucket As - 8.6m <sup>3</sup> / 11.2Yds <sup>3</sup>
638-3512	Bucket As - 9.2m <sup>3</sup> / 12.0Yds <sup>3</sup>
638-3513	BUCKET AS - 9.8M <sup>3</sup> / 12.8YDS <sup>3</sup>
612-5777	Bucket As - 11.1m <sup>3</sup> / 14.5Yds <sup>3</sup> (Light Weight Material Bucket selection. ONLY FOR USE WITH: CHILEAN DEALERS)

## R2900 – DURILOCK RETENTION

NUMBER	NAME
597-6298	Durilock Retention Kit

Note: Please refer to BTB brochure (AEXQ3466) and GET Documentation (PEBJ0030 & PEBJ0031) for further information on GET and bucket offerings.

<https://pricelist.cat.com/priceList/machine/byModel>

<https://expert.cat.com/>

# DURILOCK™ LIP SHROUD SYSTEM »

## MAINTENANCE FREE RETENTION

The new Durilock Lip Shroud system for underground loader buckets is a flexible, productive option for all Cat® underground LHDs. This new system features hammerless installation and maintenance-free retention of GET. Three interchangeable shroud styles allow you to configure your loader to its current application needs — without stopping to change the base edge or retention system.

### DURILOCK - TRADITIONAL

### D50S



Durilock  
D50S



- Balanced wear design for most applications.
- Baseline design provides equal distribution of Wear Material for applications that do not involve heavy floor cleaning.

### DURILOCK – HEAVY ABRASION

### D50A



Durilock  
D50A



- Long Life while maintaining a sharp penetrating profile.
- More usable wear material through the contoured design which repositions material on shroud base.
- Serrated edge design increases material penetration and bucket fill factors.

### DURILOCK - PENETRATION

### D50P



Durilock  
D50P

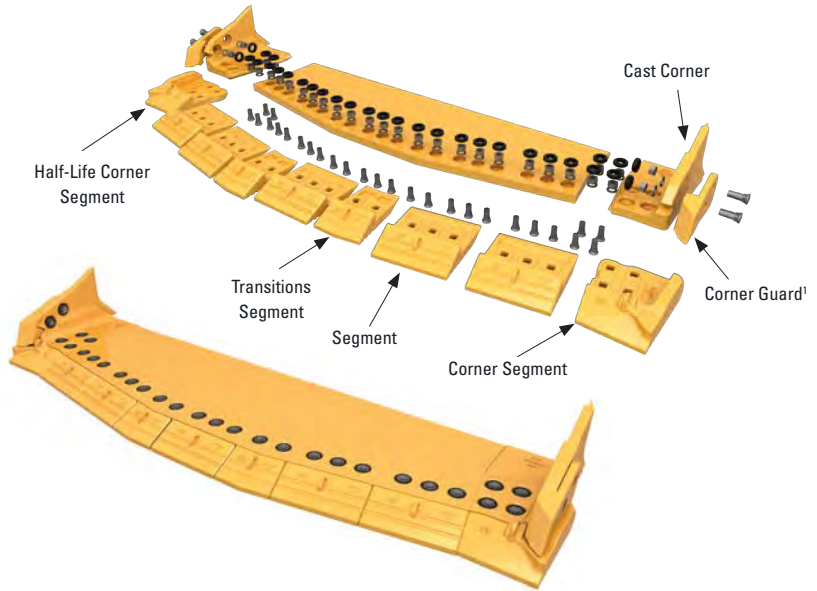


- Penetration of a tip, protection of a lip shroud.
- Serrated edge design increases material penetration and bucket fill factors.

# BOLT ON HALF-ARROW GET »

## EXTENDED SERVICE LIFE THROUGH INTEGRATED DESIGN

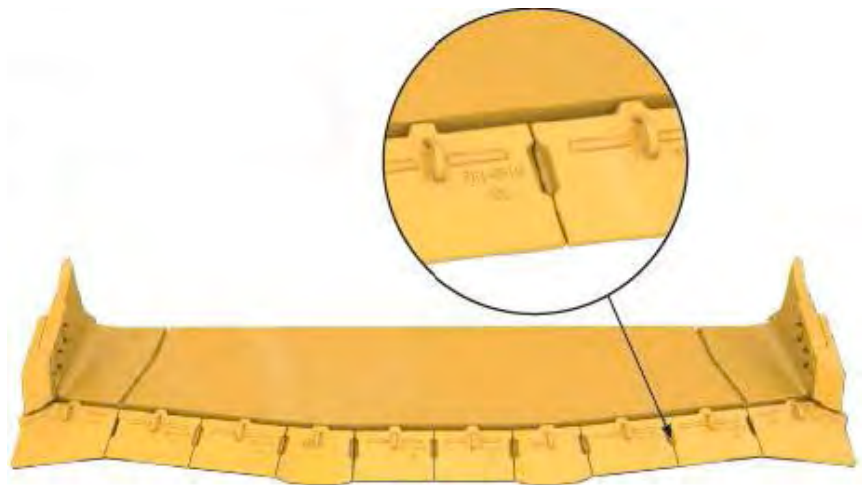
The bolt on half arrow (BOHA) system delivers world class lip protection with fewer parts than competitive systems. This means reduced maintenance cost through better protection, and fewer parts to manage. BOHA segments have superior hardness vs. welded components.



# MODULAR SEGMENT SYSTEM »

## EASIEST INSTALLATION OF ANY WELDED SYSTEM

Modular Shrouds deliver welded part reliability with the replacement simplicity of a mechanical system. Wear indicators are visible from the topside to help establish maintenance intervals. Integrated Bevel allows for faster weld installation time and creates a stronger edge assembly by locking segments together.



## THANK YOU FOR CHOOSING A CAT® Underground Loader

Cat® underground loaders make your material handling and loading jobs safer, faster, more precise and profitable. Cat underground loaders set the standard for reliability, productivity, fuel efficiency, versatility and operator comfort.

### UPGRADE/REPAIR & REBUILD KITS

Customize your Cat Underground Loader to fit your needs with a variety of specialized products designed for your industry and application. These features, accessories and attachments help optimize and maintain your machine, so you can get the most out of every use. Please reference Service Information System (SIS) for the most up to date information.

### COMMON MAINTENANCE PARTS

Preventative maintenance helps extend the life of your machine and protect your investment. Only Cat Parts are made to match your machine's specific filtration needs, lubrication requirements and exact maintenance cycles. That's why our parts kits make it easier to maintain your machine and keep it running at peak performance.

## LET'S DO THE WORK.™

PEBJ0249-01

January 2025

© 2025 Caterpillar. All Rights Reserved. CAT, CATERPILLAR, LET'S DO THE WORK, their respective logos, "Caterpillar Corporate Yellow", the "Power Edge" and Cat "Modern Hex" trade dress as well as corporate and product identity used herein, are trademarks of Caterpillar and may not be used without permission. VisionLink is a trademark of Caterpillar Inc., registered in the United States and in other Countries.

