



# Cat<sup>®</sup>

## 309 CR

(STANDARD UNDERCARRIAGE)

### MINI HYDRAULIC EXCAVATOR

#### FEATURES:

The Cat<sup>®</sup> 309 CR Mini Excavator delivers maximum power and performance in a mini size to help you work in a wide range of applications.

#### ALL DAY COMFORT

- A sealed and pressurized cab is equipped with an improved air conditioning system, adjustable wrist rests and a suspension seat to help keep you working comfortably all day long.

#### EASY TO OPERATE

- Controls are easy to use and the intuitive Next Generation Monitor provides customizable machine operator preferences and easy to read machine information.

#### STICK STEER TRAVEL MODE

- Moving around the job site is even easier with the Cat Stick Steer option. Easily switch from traditional travel controls with levers and pedals to joystick controls with a push of a button. The benefit of less effort and improved control is in your hands!

#### BIG PERFORMANCE IN A MINI DESIGN

- Increased lifting, swinging, travel and multi-functioning performance helps you get the job done more efficiently, and blade float allows for easy clean up.

#### HIGH FLOW

- Dedicated auxiliary hydraulic pump is ideal for running power-hungry attachments while allowing the machine to simultaneously travel and multifunction. This feature allows consistent pressure to the auxiliary lines with no loss of hydraulic power keeping your attachment running at full power maintaining optimal productivity.

#### SAFETY ON THE JOB SITE

- Your safety is our top priority. The Cat mini excavator is designed to help keep you safe on the job. A back-up camera, courtesy work lights and a fluorescent retractable seat belt with optional seat belt reminder system are just a couple of the safety features we've built into the machine.

#### SIMPLE SERVICE FOR LESS DOWNTIME

- Maintenance is quick and easy on the Cat mini excavator. Routine check points are easy to access at ground level with grouped service points and robust service panels.

#### LOWER OPERATING COSTS

- Equipped with features such as auto idle, auto engine shutdown, and efficient hydraulics with a variable displacement pump, the Cat mini excavator was designed with reducing your operating costs in mind.

#### UNMATCHED DEALER SUPPORT

- Your Cat dealer is here to help you reach your business goals. From providing equipment solutions to operator training to service needs and beyond, your Cat dealer is ready to help.



# 309 CR Mini Hydraulic Excavator

## CAT TECHNOLOGY

### EASE OF USE FOR CAT MINI EXCAVATORS

Ease of Use assists operators in controlling the machine to simplify operation, improve accuracy and enhance overall productivity on the job site. Ease of Use is available equipped on your mini excavator from the factory or as an upgrade kit post purchase.

Operators can choose from two software packages, Indicate or E-Fence to suit their application needs.

#### INDICATE

Ease of Use Indicate is an entry-level grade system providing visual and audible indicators to where the bucket is versus a target grade to cut and fill to exact specifications the first time without overcutting.

- Ideal for digging footings, septic systems, foundations, slope work and similar applications with level sites.
- Machine integrated depth measurement system from selected bench
- Operators can target a grade relative to the machine chassis (machine reference) or relative to gravity (earth reference).
- Operator can program a flat grade or a slope.
- Does not include the ability to automatically adjust stick, boom or bucket position. Cat Grade is required for autos functionality.
- Includes Swing Assist ideal for truck loading and trenching applications, and Bucket Assist ideal for sloping, leveling, fine grading and trenching applications.

#### E-FENCE

Ease of Use E-Fence automatically constrains machine motion within operator pre-set boundaries for Ceiling, Floor, Wall and Swing to avoid structures overhead, underground, in front or to the left or right of the machine.

- Ideal for applications near high-traffic, protecting structures on the job site, avoiding fiber optic cables and other underground utilities.
- Limits boom, stick, bucket, house and boom swing from operating beyond set boundaries.
- Includes Swing Assist ideal for truck loading and trenching applications, and Bucket Assist ideal for sloping, leveling, fine grading and trenching applications.

#### LASER CATCHER

Provides the ability to reference a laser transmitter for a consistent reference point across the job site. It reduces the requirement for manual grade checking either by the operator or additional personnel around the machine. The laser catcher is retrofittable to all Ease of Use ready machines.

- Improve operator efficiency and safety on the job site through using a site reference laser to set a fixed reference point.
- Allows the operator to bench once, reference the laser transmitter, and then continue to dig to desired grade without the need to re-bench across the job site.

### CAT GRADE

Cat Grade is available as an aftermarket-installed automatics system that is easy to learn and use. Cat Grade Advanced 2D and 3D give you the ability to create, manage and grade simple to complex designs with accuracy ensuring cuts and fills are made to exact specifications. Cat Grade reduces costs, improves accuracy, provides improved operator efficiency and enhances safety.

#### GRADE ADVANCED 2D

Cat Grade Advanced 2D allows the operator to set parameters for digging and leveling operations, including cross slope and work site main fall. Grade Advanced 2D also lets the operator input, edit and work to basic 2D design plans from the operator's seat.

- Ideal for commercial site pad designs, trenches, commercial septic systems and similar applications.
- Provides bucket position in real time, and the operator can select from a number of different viewing angles.

#### GRADE 3D

Cat Grade 3D for excavators adds deeper design capabilities, plus, Global navigation satellite system (GNSS) receivers and a correctional data source to achieve Real Time Kinematic (RTK) positioning guidance for more complex planes, slopes, contours and curves.

- Provides operator with bucket positioning in relation to preloaded 3D design files or background maps.
- Helps to coordinate multiple machine operations while maintaining accurate digging parameters across large job sites.

Availability varies by region, please contact our Cat dealer to discuss the best technology options for you and your application.

## Specifications†

### Engine

Engine Model	Cat® C2.8 Turbo	
<b>Rated Net Power</b>		
ISO 9249, 80/1269/EEC	51.2 kW	69.0 hp
<b>Engine Power</b>		
ISO 14396	55.4 kW	74.3 hp
Bore	90 mm	3.5 in
Stroke	110 mm	4.3 in
Displacement	2.8 L	171 in <sup>3</sup>

- Meets U.S. EPA Tier 4 Final and EU Stage V emissions standards.
- Advertised power is tested per the specified standard in effect at the time of manufacture.
- Net power advertised is the power available at the flywheel when the engine is at the rated speed of 2,200 rpm and the engine is installed with the factory configured fan, air intake system, exhaust system and alternator with a minimum alternator load.

### Weights

Minimum Operating Weight with Cab*	8565 kg	18,886 lb
Maximum Operating Weight with Cab**	9465 kg	20,870 lb

\*Minimum Weight is based on rubber belt, no counterweight, operator, full fuel tank, standard stick, blade and no bucket.

\*\*Maximum Weight is based on steel tracks with rubber pads, 500 kg (1,103 lb) counterweight, operator, full fuel tank, long stick, blade and no bucket.

### Weight Increase from Minimum Configuration

Counterweight	250 kg	551 lb
Counterweight	500 kg	1,103 lb
Long Stick	66 kg	146 lb
Steel Tracks with Pads	341 kg	752 lb

### Travel System

Travel Speed – High	5.1 km/h	3.2 mph
Travel Speed – Low	3.1 km/h	1.9 mph
Maximum Traction Force – High Speed	27.8 kN	6,250 lbf
Maximum Traction Force – Low Speed	67.5 kN	15,175 lb
Ground Pressure – Minimum Weight	37.5 kPa	5.4 psi
Ground Pressure – Maximum Weight	41.4 kPa	6.0 psi
Gradeability (maximum)	30 degrees	

### Service Refill Capacities

Cooling System	10.0 L	2.6 gal
Engine Oil	8.8 L	2.3 gal
Fuel Tank	147 L	39 gal
Hydraulic Tank	53 L	14 gal
Hydraulic System	110 L	29 gal

### Hydraulic System

Load Sensing Hydraulics with Variable Displacement Piston Pump		
Pump Flow @ 2,400 rpm	167 L/min	44 gal/min
Operating Pressure – Equipment	285 bar	4,134 psi
Operating Pressure – Travel	285 bar	4,134 psi
Operating Pressure – Swing	250 bar	3,626 psi
Maximum Auxiliary Circuit – High Flow		
Flow at Pump*	140 L/min	37 gal/min
Pressure at Pump*	285 bar	4,134 psi
Maximum Auxiliary Circuit – Primary		
Flow at Pump*	131 L/min	35 gal/min
Pressure at Pump*	285 bar	4,134 psi
Digging Force – Stick (Standard)	42.3 kN	9,509 lbf
Digging Force – Stick (Long)	35.7 kN	8,032 lbf
Digging Force – Bucket	62.0 kN	13,946 lbf

\*Flow and pressure are not combinable. Under load, as flow rises pressure goes down.

### Swing System

Machine Swing Speed	10 rpm
Boom Swing – Left	60 degrees
Boom Swing – Right	50 degrees

### Blade

Width (Standard)	2300 mm	90.6 in
Width (Wide)	2450 mm	96.5 in
Height	431 mm	17 in

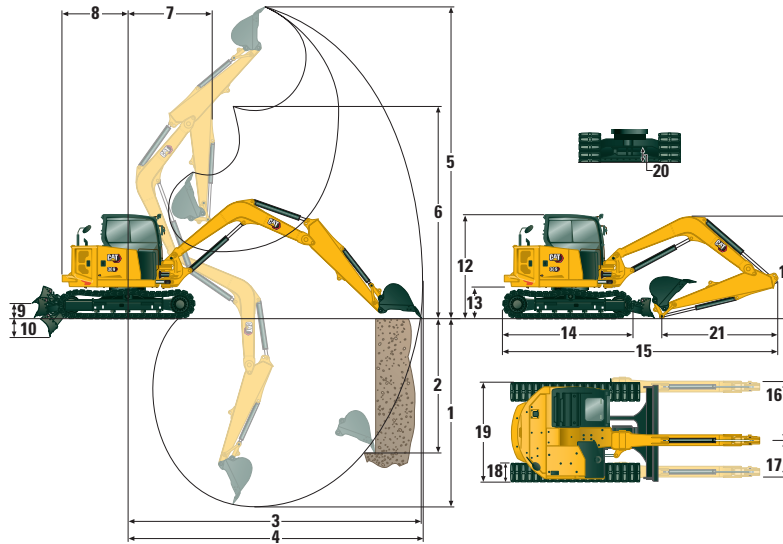
### Certification – Cab

Roll Over Protective Structure (ROPS)	ISO 12117-2:2008
Top Guard	ISO 10262:1998 (Level I)

†The 309 CR specifications are based on a machine configured with a Standard Undercarriage.

# 309 CR Mini Hydraulic Excavator

## Specifications† (continued)



## Dimensions

	Standard Stick	Long Stick
<b>1</b> Dig Depth	4108 mm (161.7 in)	4642 mm (182.8 in)
<b>2</b> Vertical Wall	2991 mm (117.8 in)	3404 mm (134.0 in)
<b>3</b> Maximum Reach at Ground Level	6949 mm (273.6 in)	7460 mm (293.7 in)
<b>4</b> Maximum Reach	7141 mm (281.1 in)	7637 mm (300.7 in)
<b>5</b> Maximum Dig Height	6736 mm (265.2 in)	7039 mm (277.1 in)
<b>6</b> Maximum Dump Clearance	4760 mm (187.4 in)	5072 mm (199.7 in)
<b>7</b> Boom in Reach	3059 mm (120.4 in)	3215 mm (126.6 in)
<b>8</b> Tail Swing		
with Counterweight 250 kg (551 lb)	1585 mm (62.4 in)	1585 mm (62.4 in)
with Counterweight 500 kg (1,103 lb)	1626 mm (64.0 in)	1626 mm (64.0 in)
without Counterweight	1450 mm (57.1 in)	1450 mm (57.1 in)
<b>9</b> Maximum Blade Height	370 mm (14.6 in)	370 mm (14.6 in)
<b>10</b> Maximum Blade Depth	407 mm (16.0 in)	407 mm (16.0 in)
<b>11</b> Boom Height in Shipping Position		
Boom Transport – No Tools*	2430 mm (95.7 in)	2260 mm (89.0 in)
Boom Working – With Tools**	2660 mm (104.7 in)	3050 mm (120.1 in)
<b>12</b> Cab Height	2541 mm (100.0 in)	2541 mm (100.0 in)
<b>13</b> Swing Bearing Height	756 mm (29.7 in)	756 mm (29.7 in)
<b>14</b> Overall Undercarriage Length	2880 mm (113.4 in)	2880 mm (113.4 in)
<b>15</b> Overall Shipping Length		
with Counterweight 250 kg (551 lb)	6706 mm (264.0 in)	6872 mm (270.6 in)***
with Counterweight 500 kg (1,103 lb)	6747 mm (266.0 in)	6913 mm (272.0 in)***
without Counterweight	6574 mm (258.8 in)	6872 mm (270.6 in)***
<b>16</b> Boom Swing Right	935 mm (36.8 in)	935 mm (36.8 in)
<b>17</b> Boom Swing Left	604 mm (23.8 in)	604 mm (23.8 in)
<b>18</b> Track Belt/Shoe Width	450 mm (17.7 in)	450 mm (17.7 in)
<b>19</b> Overall Track Width	2300 mm (90.6 in)	2300 mm (90.6 in)
<b>20</b> Ground Clearance	350 mm (13.8 in)	350 mm (13.8 in)
<b>21</b> Stick Length	1820 mm (71.8 in)	2358 mm (92.8 in)

\*Boom Height when stick is pinned in transport position with no attachments.

\*\*Boom Height when stick is pinned in working position with attachments Standard Stick offers only one pin position.

\*\*\*With blade positioned at the rear of the machine.

# 309 CR Mini Hydraulic Excavator

## Lift Capacities – Minimum Configuration<sup>1†</sup>

Lift Point Height			3 m (9.8 ft)			4.5 m (14.8 ft)			Lift Point Radius (Maximum)			
			Over Front		Over Side	Over Front		Over Side	Over Front		Over Side	m (ft)
			Blade Down	Blade Up		Blade Down	Blade Up		Blade Down	Blade Up		
4.5 m (14.8 ft)	Standard Stick	kg (lb)				2444* (5389*)	1890 (4167)	1643 (3623)	2195* (4840*)	1510 (3330)	1315 (2900)	5.13 (16.8)
	Long Stick	kg (lb)							1625* (3583*)	1251 (2758)	1089 (2401)	5.74 (18.8)
3 m (9.8 ft)	Standard Stick	kg (lb)				2767* (6101*)	1830 (4035)	1585 (3495)	2130* (4697*)	1176 (2593)	1023 (2256)	5.9 (19.4)
	Long Stick	kg (lb)				2401* (5294*)	1848 (4075)	1601 (3530)	1584* (3493*)	1011 (2229)	876 (1932)	6.42 (21.1)
1.5 m (4.9 ft)	Standard Stick	kg (lb)				3346* (7378*)	1709 (3768)	1470 (3241)	2307* (5087*)	1074 (2368)	931 (2053)	6.13 (20.1)
	Long Stick	kg (lb)				3079* (6789*)	1709 (3768)	1468 (3237)	1692* (3731*)	929 (2048)	802 (1768)	6.63 (21.8)
0 m (0 ft)	Standard Stick	kg (lb)	3749* (8267*)	3016 (6650)	2494 (5499)	3533* (7790*)	1626 (3585)	1391 (3067)	2365* (5215*)	1110 (2448)	959 (2115)	5.89 (19.3)
	Long Stick	kg (lb)	3845* (8478*)	2963 (6533)	2441 (5382)	3480* (7673*)	1595 (3517)	1360 (2999)	1991* (4390*)	949 (2093)	816 (1799)	6.42 (21.1)

<sup>1</sup> Minimum Weight includes rubber belt, cab, operator, full fuel tank, no counterweight, and no bucket.

## Lift Capacities – Maximum Configuration<sup>2†</sup>

Lift Point Height			3 m (9.8 ft)			4.5 m (14.8 ft)			Lift Point Radius (Maximum)			
			Over Front		Over Side	Over Front		Over Side	Over Front		Over Side	m (ft)
			Blade Down	Blade Up		Blade Down	Blade Up		Blade Down	Blade Up		
4.5 m (14.8 ft)	Standard Stick	kg (lb)				2444* (5389*)	2444* (5389*)	1984 (4375)	2195* (4840*)	1828 (4031)	1600 (3528)	5.13 (16.8)
	Long Stick	kg (lb)							1625* (3583*)	1625* (3583*)	1337 (2948)	5.74 (18.8)
3 m (9.8 ft)	Standard Stick	kg (lb)				2767* (6101*)	2207 (4866)	1921 (4236)	2130* (4697*)	1442 (3180)	1263 (2785)	5.9 (19.4)
	Long Stick	kg (lb)				2401* (5294*)	2401* (5294*)	1937 (4271)	1584* (3493*)	1251 (2758)	1094 (2412)	6.42 (21.1)
1.5 m (4.9 ft)	Standard Stick	kg (lb)				3346* (7378*)	2086 (4600)	1806 (3982)	2307* (5087*)	1328 (2928)	1160 (2558)	6.13 (20.1)
	Long Stick	kg (lb)				3079* (6789*)	2086 (4600)	1803 (3976)	1692* (3731*)	1160 (2558)	1011 (2229)	6.63 (21.8)
0 m (0 ft)	Standard Stick	kg (lb)	3749* (8267*)	3749* (8267*)	3080 (6791)	3533* (7790*)	2003 (4417)	1727 (3808)	2365* (5215*)	1376 (3034)	1199 (2644)	5.89 (19.3)
	Long Stick	kg (lb)	3845* (8478*)	3845* (8478*)	3027 (6675)	3480* (7673*)	1973 (4350)	1695 (3737)	1991* (4390*)	1190 (2624)	1033 (2278)	6.42 (21.1)

<sup>2</sup> Maximum Weight includes steel tracks with pads, cab, operator, full fuel tank, counterweight 500 kg (1,103 lb), and no bucket.

<sup>†</sup>The 309 CR lift capacity specifications are based on a machine configured with a Standard Undercarriage.

\*The above loads are in compliance with hydraulic excavator lift capacity rating standard ISO 10567: 2007 and they do not exceed 87% of hydraulic lifting capacity or 75% of tipping capacity. The excavator bucket weight is not included on this chart. Lifting capacities are for standard stick.

# 309 CR Environmental Declaration

The following information applies to the machine at the time of final manufacture as configured for sale in the regions covered in this document. The content of this declaration is valid as of the date issued; however, content related to machine features and specifications are subject to change without notice. For additional information, please see the machine's Operation and Maintenance Manual.

For more information on sustainability in action and our progress, please visit <https://www.caterpillar.com/en/company/sustainability>.

## Engine

- The Cat® C2.8 Turbo engine meets U.S. EPA Tier 4 Final and EU Stage V emission standards.
  - Cat diesel engines are required to use ULSD (ultra-low sulfur diesel fuel with 15 ppm of sulfur or less) or ULSD blended with the following lower-carbon intensity fuels\*\* up to:
    - ✓ 20% biodiesel FAME (fatty acid methyl ester)\*
    - ✓ 100% renewable diesel, HVO (hydrogenated vegetable oil) and GTL (gas-to-liquid) fuelsRefer to guidelines for successful application. Please consult your Cat dealer or "Caterpillar Machine Fluids Recommendations" (SEBU6250) for details.
- \*Engines with no aftertreatment devices can use higher blends, up to 100% biodiesel (for use of blends higher than 20% biodiesel, consult your Cat dealer).*
- \*\*Tailpipe greenhouse gas emissions from lower-carbon intensity fuels are essentially the same as traditional fuels.*

## Air Conditioning System

- The air conditioning system on this machine contains the fluorinated greenhouse gas refrigerant R134a or R1234yf (Europe) (Global Warming Potential = 1430). See label or instruction manual for gas refrigerant identification. The system contains 0.75 kg (1.65 lb), 0.90 kg (1.98 lb) or 1.0 kg (2.20 lb) of refrigerant which has a CO<sub>2</sub> equivalent of 1.430 metric tonnes (1.576 tons) for R134a and 0.001 tonnes (0.001 tons) for R1234yf (Europe).

## Paint

- Based on best available knowledge, the maximum allowable concentration, measured in parts per million (PPM), of the following heavy metals in paint are:
  - Barium < 0.01%
  - Cadmium < 0.01%
  - Chromium < 0.01%
  - Lead < 0.01%

## Sound Performance

Operator Sound Pressure 72 dB(A) (ISO 6396:2008)\*

Exterior Sound Power Level 99 dB(A) (ISO 6395:2008)\*\*

\*The declared dynamic operator sound pressure levels per ISO 6396:2008. The measurements were conducted with the cab doors and windows closed.

\*\*The labeled sound power level for the CE marked configurations when measured according to the test procedure and conditions specified in 2000/14/EC.

## Oils and Fluids

- Caterpillar factory fills with ethylene glycol coolants. Cat Diesel Engine Antifreeze/Coolant (DEAC) and Cat Extended Life Coolant (ELC) can be recycled. Consult your Cat dealer for more information.
- Cat Bio HYDO™ Advanced is an EU Ecolabel approved biodegradable hydraulic oil.
- Additional fluids are likely to be present, please consult the Operations and Maintenance Manual or the Application and Installation guide for complete fluid recommendations and maintenance intervals.

## Features and Technology

- The following features and technology may contribute to fuel savings and/or carbon reduction. Features may vary. Consult your Cat dealer for details.
  - Advanced hydraulic systems balance power and efficiency
  - Power On Demand provides full time efficiency and power when you need it, and is transparent to the operator
  - Auto idle and auto engine shutdown
  - Extended maintenance intervals reduce fluid and filter consumption
  - Remote Flash and Remote Troubleshoot (if equipped)
  - Mini Hydraulic Excavator Ease of Use features improve operator efficiency minimizing fuel consumption (if equipped)
  - Cat Grade Advanced 2D and 3D improves operator efficiency minimizing fuel consumption (if equipped)

## Recycling

- The materials included in machines are categorized as below with approximate weight percentage. Because of variations of product configurations, the following values in the table may vary.

Material Type	Weight Percentage
Steel	65.52%
Iron	21.19%
Rubber	3.50%
Mixed Metal	2.20%
Other	1.89%
Nonferrous Metal	1.81%
Plastic	1.55%
Fluid	1.47%
Mixed-Metal and Nonmetal	0.85%
Mixed Nonmetallic	0.01%
Uncategorized	0.00%
Total	100.00%

- A machine with higher recyclability rate will ensure more efficient usage of valuable natural resources and enhance End-of-Life value of the product. According to ISO 16714 (Earth-moving machinery – Recyclability and recoverability – Terminology and calculation method), recyclability rate is defined as percentage by mass (mass fraction in percent) of the new machine potentially able to be recycled, reused or both.

All parts in the bill of material are first evaluated by component type based on a list of components defined by the ISO 16714 and Japan CEMA (Construction Equipment Manufacturers Association) standards. Remaining parts are further evaluated for recyclability based on material type.

Because of variations of product configurations, the following values in the table may vary.

Recyclability – 96%

The data provided above was based on the product configuration as provided by the individual product group.



## Standard and Optional Equipment

Standard and optional equipment may vary. Consult your Cat dealer for details.

	Standard	Optional		Standard	Optional
<b>ENGINE</b>			<b>OPERATOR ENVIRONMENT <i>(continued)</i></b>		
Cat® C2.8 Turbo Diesel Engine (U.S. EPA Tier 4 Final/EU Stage V) – Electronic Engine, Turbo, Fit-For-Life Diesel Particulate Filter (DPF) and Diesel Oxidation Catalyst (DOC) Aftertreatment System	✓		Mounting Bosses for Top and Front Guards	✓	
Automatic Engine Idle	✓		12V Power Socket	✓	
Automatic Engine Shutdown	✓		Radio – Bluetooth, Auxiliary, Microphone, USB (charging only)	✓	
Automatic Swing Brake	✓		Skylight	✓	
Automatic Two Speed Travel	✓		Signaling/Warning Horn	✓	
Fuel Water Separator with Indicator	✓		Cab and (left side) Boom Work Lights	✓	
Radial Seal – Double Element Air Filter	✓		Utility Space for Mobile Phone	✓	
Extended Life Coolant, –37° C (–37° F)	✓		Rain Visor		✓
<b>HYDRAULICS</b>			Next Generation Color LCD Monitor (IP66)	✓	
Electronic Variable Displacement Piston Pump	✓		– Jog Dial Interface		
Load Sensing/Flow Sharing Hydraulics	✓		– Fuel Level and Coolant Temperature Gauges		
Dedicated Auxiliary Hydraulic Pump	✓		– Maintenance and Machine Monitoring		
Power On Demand	✓		– Performance and Machine Adjustments		
Hydraulic Temperature Monitoring	✓		– Numeric Security Code		
Certified Accumulator	✓		– Multiple Languages		
HYDO Advanced Hydraulic Oil	✓		– Camera Ready (IP68 & IP69K)		
Ecology Drain	✓		– Hour Meter with Wake Up Switch		
Third Auxiliary		✓	Next Generation Advanced Monitor <i>(below are all included with Next Generation Advanced Monitor option)</i>		✓
<b>OPERATOR ENVIRONMENT</b>			– Touch Screen		
Top Guard ISO 10262 1998 Level I	✓		– Site Reference System		
ROPS ISO 12117-2:2008	✓		– High Definition Camera Capable (IP68 & IP69K)		
Stick Steer Mode	✓		– Numeric Security Code		
Travel Cruise Control	✓		<b>TECHNOLOGY <i>(availability varies by region)</i></b>		
Control Pattern Changer	✓		Ease of Use Indicate		✓
Adjustable Wrist Rests	✓		Ease of Use E-Fence		✓
Molded Footrests	✓		Ease of Use Laser Catcher		✓
Removable, Washable Floor Mat	✓		Cat Grade Advanced 2D		✓
Travel Pedals and Hand Levers	✓		Cat Grade 3D		✓
Cat Key with Passcode Option	✓		Product Link™ Elite (regulations apply)	✓	
Push to Start with Bluetooth® Key		✓	<b>UNDERCARRIAGE</b>		
HVAC with Automatic Temperature Control	✓		Greased and Lubricated Track	✓	
Hydraulic Lockout Controls	✓		Tie Down Eyes on Track Frame	✓	
Integrated Lower Front Window	✓		Dozer Blade	✓	
Assisted Front Window Overhead Storage	✓		Wide Dozer Blade		✓
Rear Window Emergency Exit	✓		Dozer Float	✓	
Cab Mirrors (vary by region)	✓		Bolt-on, Reversible Wear Edge	✓	
Fabric, High Back, Suspension Seat	✓		Steel Tracks (450 mm/17.7 in wide)		✓
Air Suspension Heated Seat		✓	Wide Steel Tracks (600 mm/23.6 in)		✓
Retractable Seat Belt (75 mm/3 in)	✓		Steel Track with Rubber Pads		✓
Seat Belt Reminder System		✓	Track Guides		✓
Coat Hook	✓				
Cup Holder	✓				
LED Interior Light	✓				
Literature Holder	✓				

*(continued on next page)*

# 309 CR Mini Hydraulic Excavator

## Standard and Optional Equipment *(continued)*

Standard and optional equipment may vary. Consult your Cat dealer for details.

	Standard	Optional		Standard	Optional
<b>BOOM, STICK AND LINKAGES</b>			<b>GUARDING</b>		
One Piece Boom (3400 mm/133.9 in)	✓		ROPS ISO 12117-2:2008	✓	
Standard Stick (1820 mm/71.7 in)	✓		Top Guard ISO 10262:1998 (Level I)	✓	
Long Stick (2360 mm/92.9 in)		✓	Top Guard ISO 10262:1998 (Level II)		✓
Front Shovel Capable – Pin-on/ Manual Coupler/Hydraulic Coupler (not available in all regions)	✓		Front Guard (Mesh) ISO 10262:1998 (Level I)		✓
Thumb Ready (not available in all regions)	✓		Front Guard (Heavy Duty) ISO 10262:1998 (Level II)		✓
Attachments including Buckets, Augers and Hammers		✓	Track Guards		✓
2nd Auxiliary Hydraulic Lines with Case Drain		✓	<b>OTHER</b>		
Boom Lowering Control Valve (Europe Standard)		✓	Counterweight (250 kg/551 lb)		✓
Stick Lowering Control Valve (Europe Standard)		✓	Counterweight (500 kg/1,103 lb)		✓
Certified Lifting Eye		✓	Locks on External Enclosure Doors	✓	
<b>ELECTRICAL</b>			Lockable Fuel Cap	✓	
12 Volt Electrical System	✓		Beacon Socket	✓	
60 Ampere Alternator	✓		Rear Reflectors	✓	
Circuit Breaker	✓		Water Jacket Heater		✓
900 CCA Maintenance Free Battery	✓		Refueling Pump		✓
Lock Out/Tag Out Battery Disconnect	✓		Variable Angle Boom (refer to 309 CR VAB brochure for VAB specs and additional information)		✓
Ignition Key Stop Switch	✓				
Travel Alarm	✓				
Rear Camera	✓				
Rear and Side Camera		✓			
Rotating Beacon		✓			

For more complete information on Cat products, dealer services, and industry solutions, visit us on the web at [www.cat.com](http://www.cat.com)

© 2025 Caterpillar  
All rights reserved

Materials and specifications are subject to change without notice. Featured machines in photos may include additional equipment. See your Cat dealer for available options.

CAT, CATERPILLAR, LET'S DO THE WORK, VisionLink™, their respective logos, "Caterpillar Corporate Yellow," the "Power Edge" and Cat "Modern Hex" trade dress as well as corporate and product identity used herein, are trademarks of Caterpillar and may not be used without permission.

AEHQ8510-01 (10-2025)  
Replaces AEHQ8510-00  
Build Number: 08A  
(Europe, Turkey, ANZP)

