



# Cat<sup>®</sup> 270

## SKID STEER LOADER

### FEATURES:

The Cat<sup>®</sup> 270 Skid Steer Loader, with its vertical lift design, delivers extended reach and lift height for quick and easy truck loading. Its stability and lifting performance provides excellent material handling. The 270 features the following:

- **Redesigned Operator Station** delivers a larger operating environment and combined with additional seat travel, the 270 provides more space for operators of any size. The optional one-piece, sealed, and pressurized cab offers a clean and quiet workspace with excellent air distribution through optimally placed vents throughout the cab.
- **Available ventilated and heated high-back air ride seat** with seat-mounted adjustable joystick controls deliver industry-leading operator comfort.
- **High performance power train** provides maximum performance and production capability through the Electronic Torque Management system, optional two speed travel and an electronic hand/foot throttle with decel pedal capability.
- **High Flow XPS auxiliary hydraulic system** delivering high flow and high pressure, is available for applications that demand maximum hydraulic work tool performance.
- **Electronically controlled Cat C3.6TA (Turbocharged, aftercooled) engine** meets Brazil MAR-1 emission standard, equivalent to U.S. EPA Tier 3 and EU Stage IIIA standards while delivering maximum horsepower across a wide RPM range and providing high torque for increased working performance, no matter the application.
- **Speed sensitive ride control option** improves operation on rough terrain, enabling better load retention, increased productivity, and greater operator comfort.
- **Maximize machine capability and control** with the Advanced Joysticks and Advanced Touchscreen Monitor. The **20.3 cm (8-inch)** Advanced Touchscreen monitor offers cutting-edge functionality and control that includes an integrated radio, Bluetooth<sup>®</sup> connectivity, and multi-camera (side-view) option, and supports 32 different language choices. The **Advanced Joysticks** provide unmatched control of machine functions and adjustments within the display without the operator having to remove their hands from the controls. This includes on-joystick navigation of the Advanced Touchscreen Monitor, radio volume up/down/mute, creep activation, creep speed increment/decrement, one-button Smart Attachment control activation, and additional auxiliary control buttons that deliver single button control of complex attachment functions.
- **Ground-level access** to all daily service and routine maintenance points helps reduce machine downtime for greater productivity.
- **Broad range of performance matched Cat Attachments** make the Cat Skid Steer Loader the most versatile machine on the job site.

## Specifications

### Engine

Engine Model	Cat C3.6TA (turbocharged, after-cooled)	
Gross Power ISO 14396	75 kW	100 hp
Net Power ISO 9249	74 kW	99 hp
Peak Torque at 1,500 rpm ISO 14396	430 N-m	317 lbf-ft
Displacement	3.6 L	221 in <sup>3</sup>
Stroke	120 mm	4.7 in
Bore	98 mm	3.9 in

- Advertised power is tested per the specified standard in effect at the time of manufacture. Net power advertised is the power available at the flywheel when the engine is equipped with fan at minimum speed, air intake system, exhaust system, and alternator.

### Weights\*

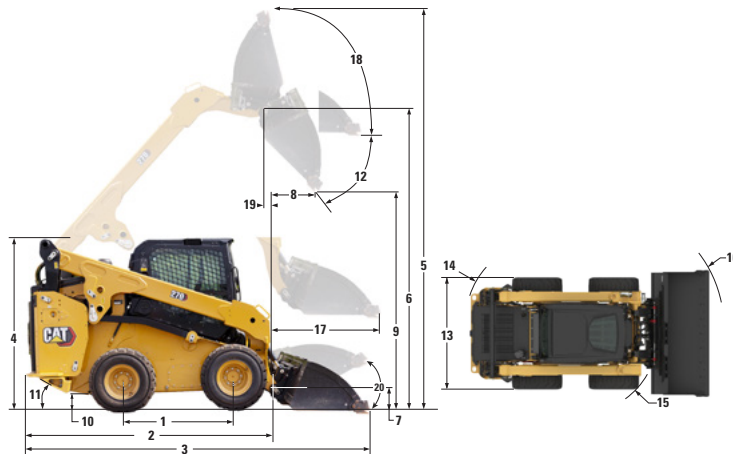
Operating Weight	4736 kg	10,441 lb
------------------	---------	-----------

### Power Train

Travel Speed (Forward or Reverse):		
One Speed	10.6 km/h	6.6 mph
Two Speed Option	15.4 km/h	9.6 mph



# 270 Skid Steer Loader



## Dimensions\*

<b>1</b> Wheelbase	1386 mm	54.6 in	<b>13</b> Vehicle Width over Tires (12" Tire Aspect Ratio [AR])	1830 mm	72 in
<b>2</b> Length without Bucket	3270 mm	128.7 in	Tread Width (gauge) (12" Tire AR)	419 mm	16.5 in
<b>3</b> Length with Bucket on Ground	3908 mm	153.9 in	Vehicle Width over tires (14" Tire AR)	1950 mm	76.8 in
<b>4</b> Height to Top of Cab	2189 mm	86.2 in	Tread Width (gauge) (14" Tire AR)	444 mm	17.5 in
<b>5</b> Maximum Overall Height	4174 mm	164.3 in	<b>14</b> Turning Radius from Center – Machine Rear	1897 mm	74.7 in
<b>6</b> Bucket Pin Height at Maximum Lift	3391 mm	133.5 in	<b>15</b> Turning Radius from Center – Coupler	1471 mm	57.9 in
<b>7</b> Bucket Pin Height at Carry Position	220 mm	8.7 in	<b>16</b> Turning Radius from Center – Bucket	2228 mm	87.7 in
<b>8</b> Reach at Maximum Lift and Dump	786 mm	30.9 in	<b>17</b> Maximum Reach with Arms Parallel to Ground	1220 mm	48.0 in
<b>9</b> Clearance at Maximum Lift and Dump	2676 mm	105.4 in	<b>18</b> Rack Back Angle at Maximum Height	88°	
<b>10</b> Ground Clearance	202 mm	8.0 in	<b>19</b> Bucket Pin Reach at Maximum Lift	320 mm	12.6 in
<b>11</b> Departure Angle	23.6°		<b>20</b> Bucket rollback angle (Ground Level)	28°	
<b>12</b> Maximum Dump Angle	43.5°				

\*Operating Weight, Operating Specifications and Dimensions all based on 75 kg (165 lb) operator, all fluids, one speed, 1883 mm (74 in) low profile bucket, 12 x 16.5 tires, standard flow hydraulics, enclosed cab with glass door, mechanical suspension seat, advanced display, 1000 CCA battery, front counterweight, no optional counterweights and manual quick coupler (unless otherwise noted).

## Operating Specifications\*

Rated Operating Capacity (ROC):		
50% Tipping Load	1614 kg	3,557 lb
Rated Operating Capacity with Optional Counterweights (@50%)		
Tipping Load	1776 kg	3,914 lb
Breakout Force, Tilt Cylinder	3227 kg	7,114 lb
Breakout Force, Lift Cylinder	3750 kg	8,267 lb
	2880 kg	6,349 lb

## Hydraulic System

Hydraulic Flow – Standard:		
Loader Hydraulic Pressure	24 130 kPa	3,500 psi
Loader Hydraulic Flow	86 L/min	23 gal/min
Hydraulic Power (calculated)	34.6 kW	46.4 hp
Hydraulic Flow – SEA High Flow::		
Loader Hydraulic Pressure	24 130 kPa	3,500 psi
Loader Hydraulic Flow	129 L/min	34 gal/min
Hydraulic Power (calculated)	51.9 kW	69.6 hp
Hydraulic Flow – High Flow XPS:		
Loader Hydraulic Pressure	28 000 kPa	4,061 psi
Loader Hydraulic Flow	129 L/min	34 gal/min
Hydraulic Power (calculated)	60.2 kW	80.7 hp

## Cab

Rollover Protective Structure (ROPS)	ISO 3471:2008
Falling Object Protective Structure (FOPS)	ISO 3449:2005 Level I
FOPS Level II	ISO 3449:2005 Level II (Optional)

## Service Refill Capacities

Cooling System	17.5 L	4.6 gal
Engine Crankcase	9.0 L	2.4 gal
Fuel Tank	130.7 L	34.5 gal
Hydraulic System	41.0 L	10.8 gal
Hydraulic Tank	26.0 L	6.9 gal

## Weight Changes with Additional Components

<b>Canopy Cab Subtracts:</b>		
Tip Load	-90 kg	-198 lb
Rated Operating Capacity (50%)	-36 kg	-79 lb
Rated Operating Capacity (50%)	-18 kg	-39 lb
<b>Operating Weight Enclosed Roll Over Protective Structures (EROPS):</b>		
Operating Weight	4736 kg	10,441 lb
Tip Load	3227 kg	7,114 lb
Rated Operating Capacity (50%)	1614 kg	3,557 lb
<b>Front Counterweight Adds:</b>		
Operating Weight	+194 kg	+428 lb
Tip Load	+324 kg	+714 lb
Rated Operating Capacity (50%)	+162 kg	+357 lb

## ATTACHMENTS

Get more from your machine with Cat attachments. Choose from a wide variety of options and tailor your machine to different tasks and conditions.

- Augers
- Backhoes
- Bale Grabs
- Bale Spears
- Blades, Grader, Box, Angle and Dozer
- Brooms, Angle, Pickup and Utility
- Brushcutters
- Buckets
- Cold Planers
- Compactors
- Fork Tines and Carriages
- Hammers
- Material Handling Arm
- Mulchers
- Nursery Forks
- Rakes, Grapple, Landscape and Power Box
- Shears
- Snow Blowers
- Snow Plows
- Snow Pushes
- Snow Wings
- Stump Grinders
- Tillers
- Trenchers
- Wheel Saws
- Smart Backhoe
- Smart Dozer Blade with Assist
- Smart Grader Blade with Assist



# 270 Skid Steer Loader

## MANDATORY EQUIPMENT

- Auxiliary Hydraulics: Standard or High Flow XPS
- Quick Coupler: Mechanical or Hydraulic
- High Visibility Seat Belt: 50 mm (2 in), 75 mm (3 in), or 3-point lap/shoulder
- Tires: 12 × 16.5 or 14 × 17.5

## PERFORMANCE PACKAGES

- Performance Package HP1: *Standard Flow Hydraulics*
- Performance Package H3: *High Flow XPS Hydraulics*

## COMFORT PACKAGES

- Open canopy: *Cup Holder, Cell Phone Pocket, choice of vinyl Seat (Mechanical Suspension, High Back/Heated/Air Ride Seat)*
- Enclosed Cab with heat and air conditioning: *Side Windows, Cup Holder, Cell Phone Pocket, choice of Seat (Mechanical Suspension, High Back/Heated Air Ride Seat, High Back/Ventilated and Heated Air Ride Seat) and Door choice (Glass or Polycarbonate)*

## TECHNOLOGY PACKAGES

- T2 – *Standard 12.7 cm (5 in) LCD Monitor, Standard Joysticks, Key Start, Rear-view Camera*
- T4 – *20.3 cm (8 in) Advanced Touchscreen Monitor, Advanced Joysticks, Push start, X-mount cell phone holder, and a Rear-view camera.*
- T5 – *T4 + 2 additional side view cameras.*

## RADIO

- *Radio, none – for open canopy machines and countries not certified for Bluetooth® technology*
- *Integrated AM/FM radio with Bluetooth technology. Includes USB port, 3.5 mm (.14 in) Auxiliary (AUX) input, and Bluetooth microphone. Only for use with enclosed cab. Availability varies by country.*
- *Integrated DAB+/AM/FM radio with Bluetooth technology. Includes USB port, 3.5 mm (.14 in) AUX input, and Bluetooth microphone. Only for use with enclosed cab. Availability varies by country.*

## PRODUCT LINK™

- *Product Link Basic series PL243*
- *Product Link Elite series PLE643*

## COOLING FAN

- *On-demand, variable speed hydraulic cooling fan*
- *On-demand, variable speed hydraulic cooling fan, with automatic and manual purge reversing operation*

## GUARDING AND SEALING PACKAGES

- *HD0 – base guarding and sealing (engine air inlet rain cap, front cab-to-frame sealing, and hydraulic fill access door)*
- *HD1 – intermediate guarding and sealing (HD0 + cab-to-frame side sealing, lockable fuel fill access door, tilt cylinder guarding. Some equipment varies by region)*
- *HD2 – most comprehensive guarding and sealing (HD1 + turbo guard, exhaust stack wrap, Diesel Particulate Filter (DPF) wrap, quick disconnect guarding, under step hydraulic lines guard cover, engine air inlet pre-cleaner. Some equipment varies by region)*

## STANDARD EQUIPMENT

### ELECTRICAL

- Work Tool Electrical Harness
- Heavy duty battery
- Battery disconnect with lockout feature
- 12-volt Electrical System
- 85 Ampere Alternator
- LED Work Lights
- Auto Reverse Lights
- Switch Backlighting
- Interior LED Dome Light
- Backup Alarm
- Electrical Outlet, Beacon
- Exterior Courtesy Lighting
- Automatic Work light notification flash when parking brake is released

### OPERATOR ENVIRONMENT

- Full color LCD monitor: *Creep speed control, Drive response adjustment, Implement response adjustment, Drive Power Priority adjustment, Language selection (×32), Multi-operator Anti-theft Security System and Monitoring, Maintenance schedule and reminders, Event and Diagnostic Code monitoring, Date/Time/Units/Brightness settings, and Smart Technology for use with Smart Attachments.*
- Operator Warning System Indicators: *Air Filter Restriction, Alternator Output, Armrest Raised/Operator Out of Seat, Engine Coolant Temperature, Engine Oil Pressure, Glow Plug Activation, Hydraulic Supply Filter Restriction, Hydraulic Oil Temperature, Park Brake Engaged, Engine Emission System (where applicable)*
- Gauges: *Fuel Level, Hour Meter, Hydraulic Temperature, Hour Meter, Battery Voltage, Tachometer*
- Fold In Ergonomic Contoured Armrest
- Control Interlock System, when operator leaves seat or armrest raised: *Hydraulic System Disables, Hydrostatic Transmission Disables, Parking Brake Engages*
- ROPS Cab, Tilt Up
- FOPS, Level I
- Top and Rear Windows
- Floor Mat
- Headliner
- Interior Rearview Mirror
- Horn
- Hand (Dial) Throttle, Electronic
- Seat Mounted Joystick Controls
- Cell Phone Storage Pocket
- Cup Holder
- 12-volt power port
- Foot Throttle

### HYDRAULICS

- Selectable control pattern – ISO or H
- Electro/hydraulic implement control
- Electro/hydraulic hydrostatic transmission control
- Speed sensor guarding
- Heavy duty flat faced quick disconnects with integrated pressure release lever
- Hydraulic oil level sight gauge

### POWER TRAIN

- Cat C3.6TA turbocharged diesel engine, meeting Brazil MAR-1 emission standards, equivalent to U.S. EPA Tier 3 and EU Stage IIIA
  - Glow plugs starting aid
  - Liquid cooled, direct injection
- Extended life antifreeze (–37°C, –34°F)
- Air cleaner, dual element, radial seal
- Scheduled Oil Sampling (S-O-S<sup>SM</sup>) Valve, Hydraulic Oil
- Ecology drain – coolant
- Radiator coolant level sight gauge
- Radiator expansion bottle
- Filter, hydraulic supply, cartridge type
- Filter, hydraulic return, cartridge type
- Filter, canister type, engine oil
- Filter, canister type, fuel and water separator
- Radiator/hydraulic oil cooler (side-by-side)
- Spring applied, hydraulically released, parking brakes
- Hydrostatic transmission
- Lockable fuel cap
- Hydraulic demand cooling fan
- Auto engine idle

### FRAME

- Machine tie down points (7)
- Removable panels for machine frame cleanout
- Support, lift arm
- Steel rear and front bumpers, welded
- Fuel fill, machine right hand side

### OTHER

- Auxiliary Hydraulics, Continuous Flow
- Telematics, Product Link, Cellular
- Steel engine door with replaceable louvers
- Engine door – lockable
- Work tool attachment coupler
- Cat ToughGuard™ hose

# 270 Skid Steer Loader

## OPTIONAL EQUIPMENT

---

- External Counterweights
- Beacon, LED
- Engine Block Heater – 120V
- Oil, Hydraulic, Cold Operation
- 4-point machine lifting eyes
- Paint, Custom
- Speed Sensitive Ride Control
- Bluetooth Key Security
- Attachment Hose Guide
- Corrosion Inhibitor Coating



# 270 Skid Steer Loader

---



For more complete information on Cat products, dealer services, and industry solutions, visit us on the web at [www.cat.com](http://www.cat.com)

© 2025 Caterpillar  
All rights reserved

Materials and specifications are subject to change without notice. Featured machines in photos may include additional equipment. See your Cat dealer for available options.

CAT, CATERPILLAR, LET'S DO THE WORK, their respective logos, "Caterpillar Corporate Yellow," the "Power Edge" and Cat "Modern Hex" trade dress as well as corporate and product identity used herein, are trademarks of Caterpillar and may not be used without permission.

AEHQ8508-00 (01-2025)  
(AME, S Am, ANZ,  
APD excluding Japan)

