

FM568 GF/FM568 LL

FOREST MACHINES



Engine Model
Net Power – ISO 9249
Engine Power – ISO 14396

Cat® C9.3B
257.9 kW (346 hp)
259 kW (347 hp)



FM568 GF/ FM568 LL

FOREST MACHINES

The Cat® FM568 is the ultimate forestry and shovel logging weapon. With incredible swing torque, track power, lift, and stability, you can reliably produce more loads daily and increase production and profit while counting on outstanding service and support for your business.



GENERAL FORESTRY



LOG LOADER

OPTIMAL AND EFFICIENT PERFORMANCE

The Cat® C9.3B engine and electrohydraulic control system work in sync to help you move big timber without burning truckloads of fuel. Precise engine speed powering a large hydraulic pump gets you maximum production out of each fuel unit.

DOES THE HEAVY LIFTING FOR YOU

Move heavy logs easily with more engine power, more swing power and more travel power. Engaging heavy lift mode automatically increases pressure when you need an additional boost for bigger timber.

SAVES TIME AND MONEY

Experience increased uptime and reduced costs with new longer-life fuel and hydraulic oil filters. Cat® fuel filters have double the life of the previous filters, and the hydraulic oil return filter provides up to 50% more service life.

LATEST FEATURES



Machine Setup Simplification

- At the touch of fingertips and navigating user-friendly icons, the latest operator oriented User Interface (UI) maximizes uptime and gets crews to work without delay. From re-ordering work tool lists to creating new work tool combinations as needed, operators can quickly set up machines and easily access information.

Foot Pedal Swing Control Kit

- The FM538 offers powerful, reliable performance optimized for challenging forestry tasks, and now, operators can enhance productivity and ease of operation with the optional Foot Pedal Swing Control Kit. This attachment integrates seamlessly with Caterpillar customizable joystick pattern software, enabling operators to personalize controls based on their preferences or job requirements. With the kit's two auxiliary pedals, operators can control the upper rotation of the machine using their feet, providing knuckleboom loader style of operation. The Foot Pedal Swing Control Kit is ideal for those looking to maximize control and efficiency in demanding forestry environments.

*Not all features are available in all regions. Please check with your local Cat dealer for specific offering availability in your area.
Build Number: 07H*

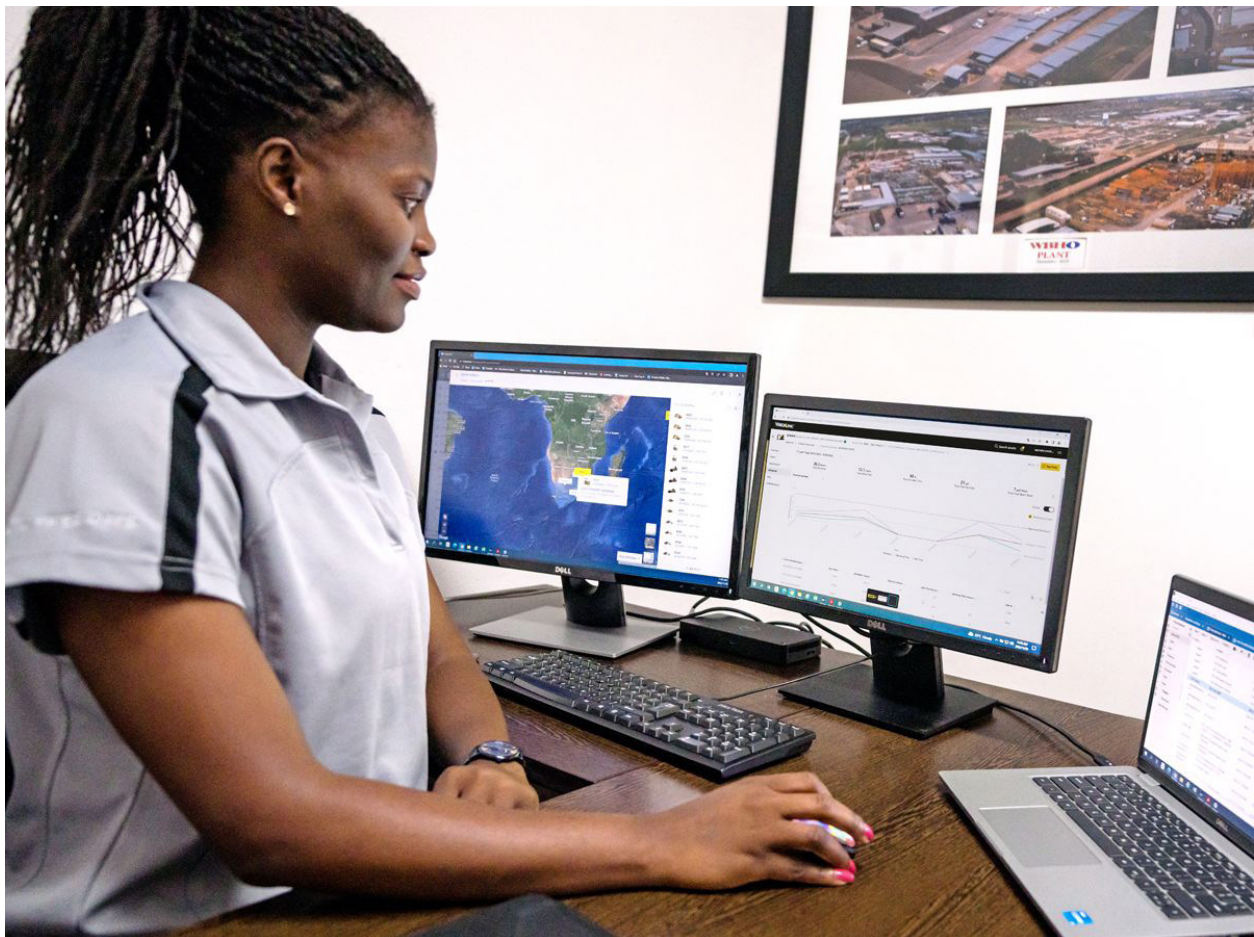


TAKE THE GUESSWORK OUT OF MANAGING YOUR EQUIPMENT

- The latest operator oriented User Interface (UI) has been designed to maximize uptime by allowing operators to easily re-order work tool lists and quickly create new work tool combinations. It also eliminates the need to measure up again when changing Cat® work tool attachments and makes it manageable for a single person to check and adjust for bucket wear.
- VisionLink® provides actionable data insights for all assets – regardless of fleet size or equipment manufacturer. * Review equipment data from your desktop or mobile device to maximize uptime and optimize assets. Dashboards provide information such as hours, miles, location, idle time, and fuel utilization. Make informed decisions that lower costs, simplify maintenance, and improve safety and security on your jobsite.
- VisionLink Productivity gathers and summarizes machine telematics and jobsite data from all your equipment – regardless of the manufacture.* View actionable information such as idle time, fuel burn, location, payload, load counts, total cycles, and more to improve machine efficiency, productivity, and utilization. Access data anywhere via a mobile, tablet, or desktop device – on or off the jobsite.
- Cat® Inspect is a mobile application that allows you to easily perform digital preventative maintenance (PM) checks, inspections, and daily walkarounds. Inspections can easily be integrated with other Cat data systems like VisionLink so you can keep a close eye on your fleet.
- Remote Troubleshoot is a mobile application that allows your Cat dealer to perform diagnostic testing on your connected machine remotely to help resolve issues quickly and with less downtime.
- Remote Flash is a mobile application that allows you to update onboard software without a technician being present, allowing you to initiate software updates when convenient, increasing your overall operating efficiency.
- The Cat PL161 attachment locator allows you to track attachments across all worksites, reduce the number of lost attachments, and plan for attachment maintenance and replacement. The work tool recognition** feature automatically adjusts machine settings based on the selected tool.

**Data field availability can vary by equipment manufacturer.*

***Recognition feature available on select excavator models. Consult your Cat dealer for details.*



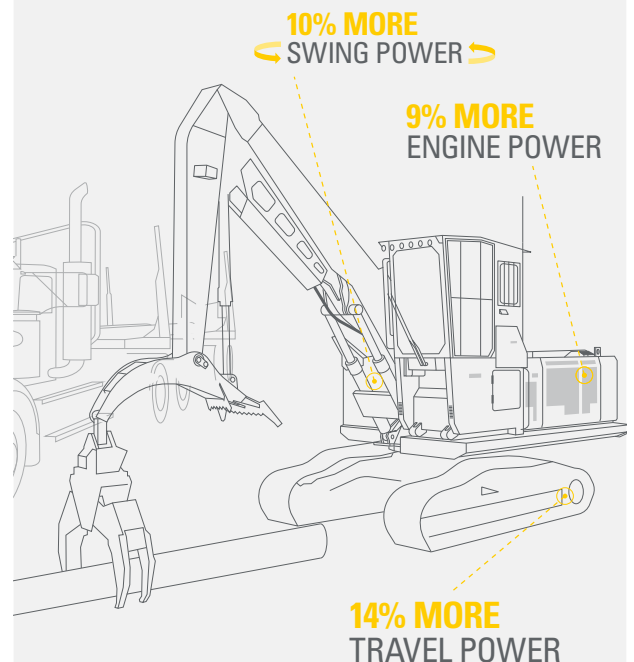
SUPERIOR PERFORMANCE



- The Cat C9.3B is up to 9% more powerful, is fuel efficient, and can run on biodiesel and other renewable fuels.
- Smart mode helps reduce fuel consumption by automatically matching engine and hydraulic power to working conditions.
- Pick and place logs with precision and power with the electrohydraulic control system.
- Heavy lift mode with up to 10% more swing torque* helps you confidently move big logs.
- Get to work faster with up to a 14% increase in travel speed.*
- Auxiliary hydraulic options let you use Cat grapples and various other attachments.
- Work in extreme environments with a standard high-ambient capability of 52° C (126° F) and cold start capability of -32° C (-25° F).

*Compared to 2020 568.

GET MORE WORK DONE



UNMATCHED OPERATOR COMFORT

- Operators can choose the rear or side entry cab with up to 25% more space and a tilt-up console.*
- The dual HVAC system keeps operators comfortable in cold and warm weather.
- A wider heated and cooled air-suspension seat makes year-round work more pleasant.
- All controls are within easy reach to reduce twisting and turning and keep you focused on the work area.
- Cab risers – 165 mm (6.5") fixed or 1219 mm (48") hydraulic tilt – are available to meet your work needs.
- Special roof lining and window and door sealing reduce noise, making the interior as quiet as today's top work trucks.
- Stow your gear with in-cab storage beneath, behind the seat, and in the consoles.
- Use the standard radio's USB ports and Bluetooth® technology to connect personal devices and make hands-free calls.

*Compared to 2020 568.



SIMPLE OPERATION



- Cat continues to improve user interface functionality for operators of all skill levels. The touchscreen monitor is an easy-to-use operating tool that presents the jobsite dashboard with an intuitive format.
- The Cat PL161 attachment locator is a Bluetooth® device designed to let users know where their attachments are across all worksites, reduce the number of lost attachments, and plan for attachment maintenance and replacement. The PL161 integrates easily into VisionLink for full fleet management of machines and attachments from one smartphone or tablet dashboard to view location and tracking details.
- The keyless push-button engine start adds security by using operator ID codes to limit and track machine access. Codes can be entered manually or via an optional Bluetooth key fob.
- Navigate quickly on the standard high-resolution 254 mm (10 in) touchscreen monitor.
- Make moving the excavator much easier with optional Cat Stick Steer. Push a button and use one hand to travel and turn instead of both hands or feet on levers or pedals.
- Not sure how a function works or how to maintain the machine? Always have the operator's manual at your fingertips in the touchscreen monitor.
- Optional auxiliary relay powers on and turns off CB radios and other attachments without you taking your hands off the joysticks.



VERSATILE CONFIGURATIONS



General Forestry

1. The General Forestry model is ideal for road work, grappling, processing, and delimiting.
2. With a reach boom and quick coupler, you can equip the FM568 with a processor, bucket, thumb, mulcher, and other attachments to get work done quickly and efficiently.
3. A frontless option allows you to customize the machine to fit your applications.

Log Loader

1. The log loader configuration is ideal for truck loading, Butt-n-Top loading, power clam applications, and millyard work.
 2. An under-mounted heel cylinder provides maximum force for shovel logging with a Cat grapple. A variable displacement pump delivers high-flow rotating capability for heel and log grapples and Power Clam and Butt-n-Top grapples.
 3. An overmounted heel cylinder provides maximum clearance to load trucks and increases lift height for millyard applications.
- Rugged, reliable, simple-to-service Cat forestry grapples range in size from 1322 mm (52") to 1524 mm (60").



EASY MAINTENANCE

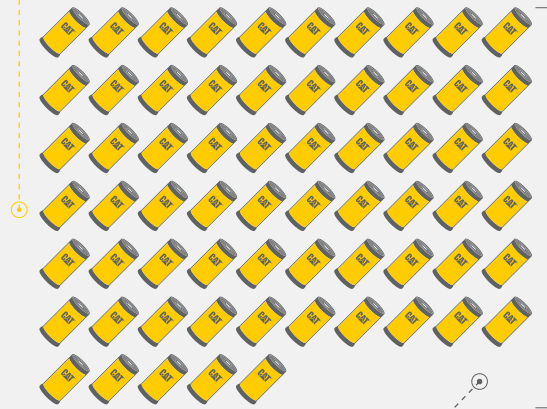
- Boost productivity with proactive service reminders. The Integrated Vehicle Health Management system alerts the operator with step-by-step service guidance and the parts needed so you don't experience unnecessary downtime.
- Expect lower maintenance cost than the previous model.
- The engine's regeneration system functions automatically with no operator input or interruption to work.
- Using Cat genuine oil and filters and doing typical Scheduled Oil Sampling (S-O-SSM) monitoring will double the current service interval to 1,000 hours, giving you greater uptime to do more work.
- S-O-S ports simplify maintenance and allow for quick, easy extraction of fluid samples for analysis.
- The diesel particulate filter requires no maintenance.
- Replace fuel filters at 1,000 hours – twice the interval from the previous filters.
- The latest hydraulic oil filter provides improved filtration performance, anti-drain valves to keep oil clean when the filter is replaced, and longer life with a 3,000-hour replacement interval – 50% longer than previous filter designs.
- The high-efficiency cooling fan runs only when needed; program intervals so the fan automatically reverses to keep cores clean without interrupting your work.
- Standard Product LinkTM provides location, machine hours, fuel usage, productivity, idle time, diagnostic codes, and other machine data on demand through VisionLink online interface, helping you improve jobsite efficiency with lower operating costs.
- Remote Troubleshoot* connects you to a dealer service pro to help solve your problem and quickly get you to work.
- Remote Flash* works around your schedule to ensure your machine's software is up to date for optimal performance.

*Requires cell coverage.



SAVE MONEY

THE NEXT GENERATION 568 CONSUMES
UP TO 65 FEWER FILTERS*



FEWER FILTERS,
LONGER INTERVALS,
LESS COST,
MORE PRODUCTIVITY

*COMPARED TO PREVIOUS 568 OVER 12,000 HOURS

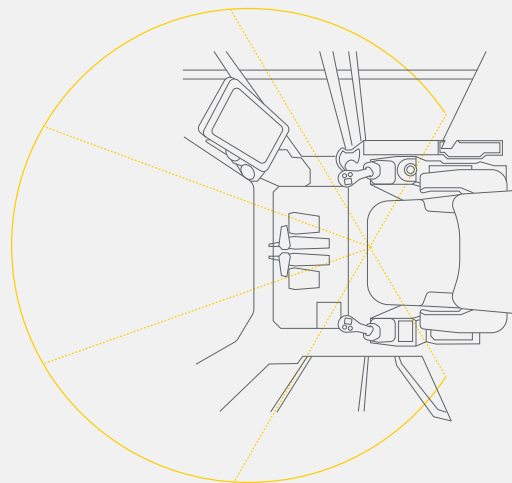


ENHANCED SAFETY



- The cab meets applicable industry standards for Rollover Protective Structure (ROPS)/Falling Object Protective Structure (FOPS)/Operator Protective Guards (OPG) and protects the operator inside the cab.
- Access most routine maintenance points at ground level.
- The right-hand service platform design provides easy, safe, and quick access to the upper service platform; the service platform steps use an anti-skid punch plate to prevent slipping. Handrails are provided for easy access.
- Larger 32 mm (1.25 in) polycarbonate front window, smaller cab pillars, and a flat engine hood improve visibility by up to 50%.
- Standard rearview camera enhances jobsite visibility; right-hand-sideview cameras are optional.
- The monitor's slope and grade indicator tell you the machine's position to help optimize its performance.
- A signaling/warning horn and travel alarm enhance jobsite safety.
- Make service work easier and safer with optional inspection lighting. With the flip of a switch, lights will illuminate the engine, pump, battery, and radiator compartments to enhance visibility.

50% GREATER VISIBILITY*



*CAT NEXT GENERATION 568 COMPARED TO PREVIOUS 568

- The Cat C9.3B engine meets U.S. EPA Tier 4 Final and EU Stage V emission standards.
- Cat diesel engines are required to use ULSD (ultra-low sulfur diesel fuel with 15 ppm of sulfur or less) or ULSD blended with the following lower-carbon intensity fuels** up to: 20% biodiesel FAME (fatty acid methyl ester)* or 100% renewable diesel, HVO (hydrogenated vegetable oil) and GTL (gas-to-liquid) fuels. Refer to guidelines for successful application. Please consult your Cat dealer or “Caterpillar Machine Fluids Recommendations” (SEBU6250) for details.
- Auto Engine Speed Control reduces unnecessary fuel burn and greenhouse gas emissions by allowing the engine to automatically go into idle mode when the machine is not working.
- Extended maintenance intervals reduce downtime and decrease the amount of fluid and filters that are replaced over the machine's life.
- Cat VisionLink displays the CO₂ emissions for monitored assets, calculated by fuel type for the Runtime Fuel Burned each day in a selected date range.
- Remote Flash minimizes downtime and maintenance time while keeping your asset running at maximum efficiency. Alerts for machine updates are sent virtually from your Cat dealer, and updates can be deployed without a dealer technician needing to be onsite.
- Remote Troubleshoot decreases maintenance time and keeps your machine running with maximum efficiency by allowing your Cat dealer to virtually test the machine while working. Once a problem is identified, a technician can fix it the first time, saving time and money.

**Engines with no aftertreatment devices can use higher blends, up to 100% biodiesel (for use of blends higher than 20% biodiesel, consult your Cat dealer).*

***Tailpipe greenhouse gas emissions from lower-carbon intensity fuels are essentially the same as traditional fuels.*



INCREASE YOUR PRODUCTIVITY AND PROFIT

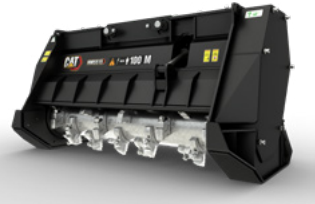
WITH CAT ATTACHMENTS

Easily expand the performance of your machine by utilizing any of the variety of Cat attachments. Each Cat attachment is designed to fit the weight and horsepower of the Cat machine for improved performance, safety, and stability.



GRAPPLES

Cat log loading grapples are made with high-strength steel for maximum performance. They are ideal for picking and sorting, bunching and loading, and shoveling applications. Bolt-on access panels make them easier to service.



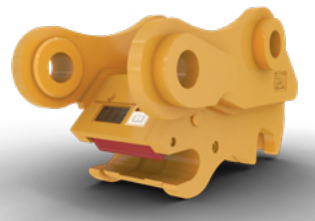
MULCHERS

Cat forestry mulchers make land clearing fast and safe. Staggered teeth quickly turn trees into mulch; a hydraulically controlled door lets the operator direct mulch flow to enhance jobsite safety.



BUCKETS

Cat buckets move material quickly and efficiently. Their unique design enables more efficient filling and better operator control, which improves overall productivity.



COUPLERS

Cat quick couplers allow you to change between tools in minutes, making the machine capable of doing a variety of money-making tasks.



ATTACHMENT TRACKING MADE EASY

The Cat PL161 Attachment Locator is a Bluetooth device that makes finding grapples, buckets, and other gear quick and easy. The excavator's onboard Bluetooth reader or Cat App on your phone will locate the device automatically.

TECHNICAL SPECIFICATIONS

Engine

Engine Model	Cat C9.3B	
Net Power – ISO 9249	257.9 kW	346 hp
Engine Power – ISO 14396	259 kW	347 hp
Net Power – ISO 9249 (DIN)	351 hp (metric)	
Engine Power – ISO 14396 (DIN)	352 hp (metric)	
Bore	115 mm	4.53 in
Stroke	149 mm	5.87 in
Displacement	9.3 r/min	567.5 r/min
Biodiesel Capability	Up to B20 ¹	
Emissions	Meets U.S. EPA Tier 4 Final and EU Stage V emission standards.	

Net power advertised is the power available at the flywheel when the engine is equipped with fan, air intake system, exhaust system, and alternator with engine speed at 1,900 rpm. Advertised power is tested per the specified standard in effect at the time of manufacture.

¹Cat diesel engines are required to use ULSD (ultra-low sulfur diesel fuel with 15 ppm of sulfur or less) or ULSD blended with the following lower-carbon intensity fuels** up to: 20% biodiesel FAME (fatty acid methyl ester)* or 100% renewable diesel, HVO (hydrotreated vegetable oil) and GTL (gas-to-liquid) fuels. Refer to guidelines for successful application. Please consult your Cat dealer or “Caterpillar Machine Fluids Recommendations” (SEBU6250) for details.

*Engines with no aftertreatment devices can use higher blends, up to 100% biodiesel (for use of blends higher than 20% biodiesel, consult your Cat dealer).

**Tailpipe greenhouse gas emissions from lower-carbon intensity fuels are essentially the same as traditional fuels.

Drive

Maximum Travel Speed	4.3 km/h	2.7 mile/h
Maximum Drawbar Pull	378 kN	84,978 lbf

Hydraulic System

Main System – Maximum Flow	581 L/min	153 gal/min
Maximum Pressure – Equipment	35 000 kPa	5,076 psi
Maximum Pressure – Equipment – Lift Mode	38 000 kPa	5,511 psi
Maximum Pressure – Travel	35 000 kPa	5,076 psi
Maximum Pressure – Swing	28 400 kPa	4,119 psi

Swing Mechanism

Swing Speed	6.1 r/min	
Maximum Swing Torque	206 kN·m	120,222 lbf·ft

Weights

Operating Weight – General Forestry	48 500 kg	106,920 lb
• 22" SEC Riser, High Wide undercarriage, Reach Boom, R3.9 m (12'10") Reach stick, 700 mm (28") double grouser shoes, 1.64 m ³ (2.14 yd ³) HD bucket.		
Operating Weight – Log Loader	49 300 kg	108,690 lb
• 48" REC Riser(Easy Lock), High Wide undercarriage, Log Loader boom, 4.73 m (15'6") Under/Under stick with live heel, 700 mm (28") double grouser shoes, no grapple.		

Air Conditioning System

The air conditioning system on this machine contains the fluorinated greenhouse gas refrigerant R134a (Global Warming Potential = 1430). The system on the 22"/48" Riser Cab contains 2.1 kg of refrigerant, which has a CO₂ equivalent of 3.003 metric tonnes. The system on the 72" Riser Cab contains 2.1 kg of refrigerant, which has a CO₂ equivalent of 3.146 metric tonnes.

Service Refill Capacities

Fuel Tank	990 L	262 gal
Cooling System	20 L	5 gal
Engine Oil	32 L	8 gal
Swing Drive	10.5 L	3 gal
Final Drive – Each	9.5 L	3 gal
Hydraulic System – Including Tank	383 L	101 gal
Hydraulic Tank	185 L	49 gal
Diesel Exhaust Fluid (DEF) Tank	80 L	21 gal

Working Ranges

Max reach at Stick Nose at Ground Level – General Forestry Road Builder	111 690 mm	38.3 ft
Max Reach at Grapple Mount on Heel at Ground Level – Log Loader Under/Under	13 130 mm	43.1 ft

Dimensions

Shipping Height – Tilted Cab	3670 mm	12 ft
Handrail Height	3510 mm	11.5 ft
Length: General Forestry – Boom Stretched Out	15 430 mm	50.6 ft
Length: Log Loader – Boom Stretched Out	16 930 mm	55.6 ft
Tail Swing Radius	3790 mm	12.4 ft
Counterweight Clearance	1500 mm	4.9 ft
Ground Clearance	760 mm	2.5 ft
Track Length	5490 mm	18 ft
Track Length to Center of Rollers	4450 mm	14.6 ft
Track Gauge	2920 mm	9.6 ft
Transport Width	3650 mm	12 ft

General Forestry configuration with high wide undercarriage, 559 mm (22") tilting riser, Reach boom, R3.9 m (12'10") Reach stick, 700 mm (28") double grouser shoes, and 1.64 m³ (2.14 yd³) HD bucket.

STANDARD & OPTIONAL EQUIPMENT

Standard and optional equipment may vary. Consult your Cat dealer for details.

	Standard	Optional		Standard	Optional
UNDERCARRIAGE AND STRUCTURES			CAB		
High Wide undercarriage	✓		ROPS Forestry cab with polycarbonate windows	✓	
Grease lubricated track with positive pin retention	✓		4-point harness seat belt	✓	
Catwalks	✓		Heated and cooled seat with air-adjustable suspension	✓	
Tie down points	✓		Integrated joysticks	✓	
Counterweight fuel tank	✓		Tilt-up left-side console (side-entry cab only)	✓	
Heavy-duty track rollers	✓		High-resolution touchscreen monitor	✓	
Heavy-duty travel motor guards	✓		Bluetooth integrated radio (including USB, auxiliary port and microphone)	✓	
Heavy-duty bottom guards	✓		12V DC outlets	✓	
Track guiding guards	✓		Keyless push-to-start engine control	✓	
High drawbar final drives	✓		Automatic bi-level air conditioner	✓	
Heavy-duty recoil springs	✓		LED dome and floor lights	✓	
Heavy-duty hydraulic swivel	✓		Windshield wiper and washer	✓	
Heavy-duty hydraulic swivel guard	✓		Behind seat storage	✓	
700 mm (28") double and single grouser shoes		✓	Retractable sunshade	✓	
850 mm (33") triple grouser shoes		✓	Rear entry		✓
BOOMS AND STICKS			Side entry		✓
6.5 m (21'4") Reach boom – General Forestry		✓	559 mm (22") tilting riser		✓
7.09 m (23'3") Straight boom – Log Loader		✓	1219 mm (48") tilting riser		✓
3.9 m (12'10") Reach stick		✓	1829 mm (72") tilting riser		✓
3.2 m (10'6") Reach Stick		✓	CB radio mounts		✓
4.73 m (15'6") Over/Under stick		✓	Cat Stick Steer		✓
4.73 m (15'6") Power Clam stick		✓	Auxiliary relay		✓
DB family bucket linkage		✓	CAT TECHNOLOGIES		
ENGINE			Remote Flash	✓	
Electric fuel priming pump	✓				
Three selectable modes: Power, Smart, Eco	✓				
Automatic engine speed control	✓				
Automatic engine idle shutdown	✓				
Up to 4500 m (14,764 ft) altitude capability	✓				
52° C (126° F) high-ambient cooling capacity	✓				
-32° C (-25° F) cold start capability	✓				
Hydraulic reverse fan	✓				
Two-stage fuel filter system	✓				
Double element air filter with integrated pre-cleaner	✓				
Cold start package with block heater and ether assist		✓			

STANDARD & OPTIONAL EQUIPMENT *(CONTINUED)*

Standard and optional equipment may vary. Consult your Cat dealer for details.

	Standard	Optional		Standard	Optional
ELECTRICAL SYSTEM			SAFETY AND SECURITY		
Maintenance-free 1000 CCA batteries (x4)	✓		Caterpillar One Key security system	✓	
Centralized electrical disconnect switch	✓		Lockable service doors	✓	
LED chassis, boom (GF), stick (LL) and cab lights	✓		Lockable external tool/storage box	✓	
115 Amp. alternator	✓		Lockable fuel caps and hydraulic tank	✓	
24-volt electric starting	✓		Service platforms with anti-skid plate and countersunk bolts	✓	
Horn and travel alarm	✓		Right-hand handrail and handhold	✓	
Pre-start monitoring system	✓		Signaling/warning horn	✓	
Tool control software	✓		Travel alarm	✓	
Secondary engine shut off switch	✓		Ground-level secondary engine shutoff switch	✓	
Premium lighting – General Forestry – 6 additional LED lights – 14 total		✓	Rearview camera	✓	
Premium lighting – Log Loader – 10 additional LED lights – 18 total		✓	Easy lock cab tilting system		✓
SERVICE AND MAINTENANCE			SAFETY AND SECURITY		
Integrated vehicle health management system	✓		Cab riser light		✓
Side-entry service platform	✓		Inspection lighting		✓
Left/Right-side fuel fill locations	✓		Swing alarm		✓
Grouped location for engine oil and fuel filters	✓		Right-hand-sideview camera		✓
S-O-S ports	✓				
HYDRAULIC SYSTEM					
Boom and stick regeneration circuits	✓				
Boom and stick drift reduction valve	✓				
Electronic main control valve	✓				
Automatic hydraulic oil warmup	✓				
Automatic swing parking brake	✓				
High performance hydraulic return filter	✓				
Automatic two speed travel	✓				
Bio hydraulic oil capability	✓				
High torque swing drive	✓				
Swing cushion valve	✓				
Tool control software	✓				
Medium pressure circuit		✓			

For more complete information on Cat products, dealer services and industry solutions, visit us on the web at www.cat.com.

© 2025 Caterpillar. All Rights Reserved.

VisionLink is a trademark of Caterpillar Inc., registered in the United States and in other countries.

Materials and specifications are subject to change without notice. Featured machines in photos may include additional equipment. See your Cat dealer for available options.

CAT, CATERPILLAR, LET'S DO THE WORK, their respective logos, SmartBoom, S·O·S, Product Link, "Caterpillar Corporate Yellow," the "Power Edge" and Cat "Modern Hex" trade dress as well as corporate and product identity used herein, are trademarks of Caterpillar and may not be used without permission.
www.cat.com www.caterpillar.com

AEXQ4176-00
Build Number: 07H
(Aus-NZ, N Am)

