

FM528GF/FM528 LL

FOREST MACHINE



Engine Model
Net Power – ISO 9249
Engine Power – ISO 14396

Cat® C4.4TTA
127 kW (170 hp)
129 kW (173 hp)



FM528GF/ FM528 LL

FOREST MACHINE

The Cat® FM528 is a versatile forestry excavator engineered for the lumberjack of all trades. From land clearing to fire clean-up, chipper + grinder loading, mulching, processing, and more, this adaptable forest machine is ready to go to work for your fleet. Built for the operator, it is equipped with the Next Gen side-entry forestry cab for premium visibility and optimum protection.



BUILT FOR OPERATORS

The certified side-entry Forestry Rollover Protective Structure (ROPS) cab is engineered for operator safety and features a wide door and a tilt-up armrest. A 32 mm (1.25") polycarbonate front safety window and smaller cab pillars enhance jobsite and work task visibility.

MULTIPLE CONFIGURATIONS

A handy addition to any fleet, the FM528 is the first Cat Forest machine to offer a fixed or live heel or blade option for versatile application.

LOW OWNING AND OPERATING COSTS

The Cat C4.4 173 hp (129 kW) engine and electrohydraulic system help drive fuel reduction and enable high-performance responses within the system to optimize operations.

LATEST FEATURES



- Bluetooth® connectivity allows pairing mobile phone or other Bluetooth device to the cab monitor and sound system.
- Pitch and roll indicator displays the machines fore and aft position and side to side position.
- Configuration setup for auxiliary is a breeze with assigning functions on the Cat control handles such as radio mute, call answer, and wiper control.

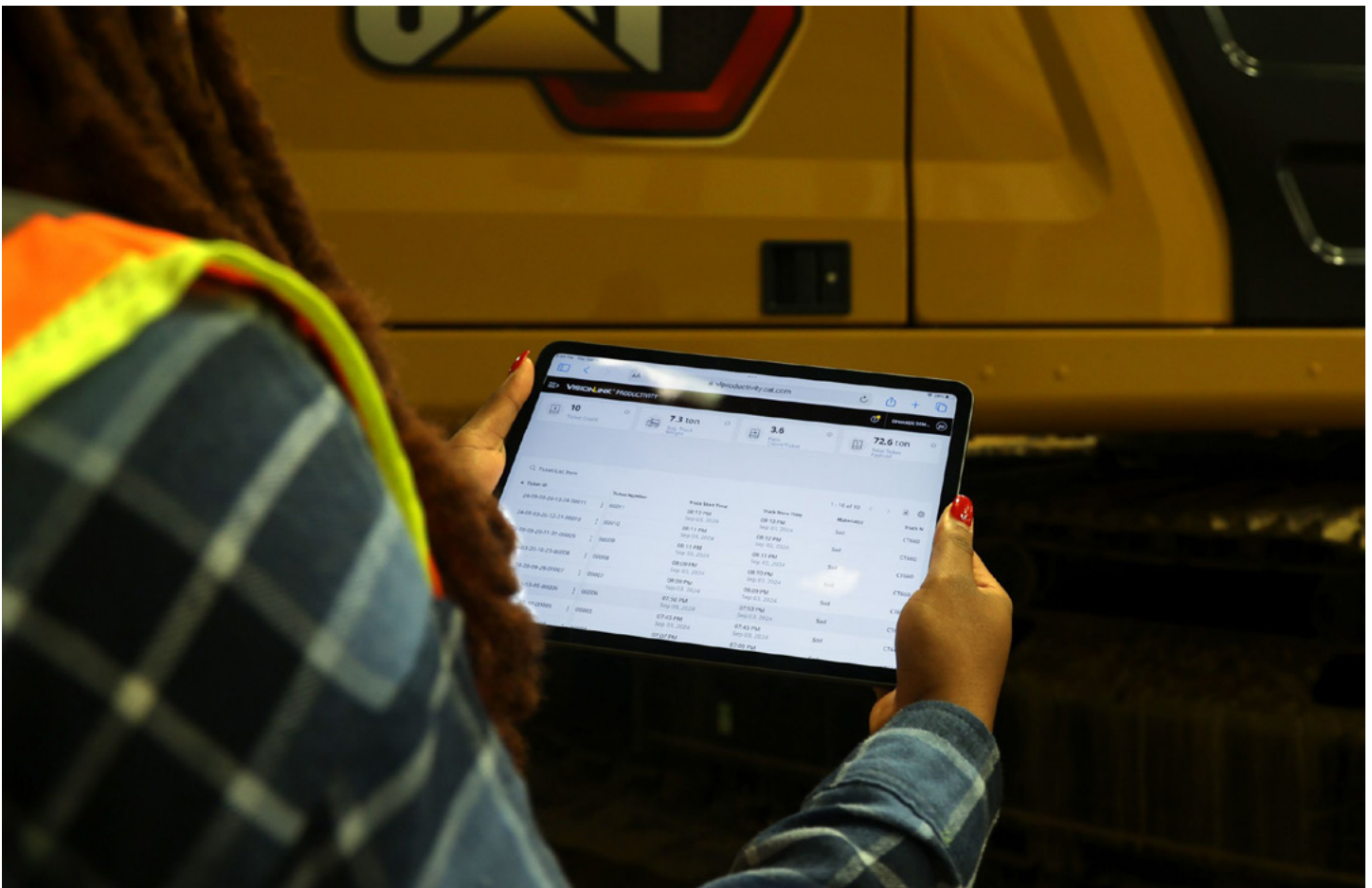
*Not all features are available in all regions. Please check with your local Cat dealer for specific offering availability in your area.
Build Number: 07H*

TAKE THE GUESSWORK OUT OF MANAGING YOUR EQUIPMENT

- VisionLink® provides actionable data insights for all assets – regardless of fleet size or equipment manufacturer.* Review equipment data from your desktop or mobile device to maximize uptime and optimize assets. Dashboards provide information such as hours, miles, location, idle time, and fuel utilization. Make informed decisions that lower costs, simplify maintenance, and improve safety and security on your jobsite.
- Cat® Inspect is a mobile application that allows you to easily perform digital preventative maintenance (PM) checks, inspections, and daily walkarounds. Inspections can easily be integrated with other Cat data systems like VisionLink so you can keep a close eye on your fleet.
- Remote Troubleshoot is a mobile application that allows your Cat dealer to perform diagnostic testing on your connected machine remotely to help resolve issues quickly and with less downtime.
- Remote Flash is a mobile application that allows you to update onboard software without a technician being present, allowing you to initiate software updates when convenient, increasing your overall operating efficiency.
- The Cat PL161 attachment locator allows you to track attachments across all worksites, reduce the number of lost attachments, and plan for attachment maintenance and replacement. The work tool recognition** feature automatically adjusts machine settings based on the selected tool.

**Data field availability can vary by equipment manufacturer.*

***Recognition feature available on select excavator models. Consult your Cat dealer for details.*



SUPERIOR PERFORMANCE



- The Cat C4.4 173 hp (129 kW) engine and electrohydraulic system help drive fuel reduction and enable high-performance responses within the system to optimize operations.
- This high-torque motor provides high power at low RPMs, minimizes downtime, reduces maintenance costs, and increases job site precision.
- The efficient engine and hydraulic system cooling E-Fans with reversing function help remove debris, improve engine efficiency, and accurately control temperatures.
- The e-fans provide greater coverage, so the air flows evenly over the radiator and charges the air cooler.
- Long-life fuel and hydraulic oil filters with extended service intervals work well with the FM528's extended service and maintenance intervals.
- Shares common parts and services with Cat Next Generation Excavators, reducing downtime with more readily available parts.
- Support of a world-class dealer network backed by a range of flexible solutions, technology, tools, and more.
- This multi-configuration machine has options for a processor, roadbuilder, log loader, and knuckleboom loader controls. It can go to work in the woods or the millyard to boost productivity and profitability.
- The narrow, high, long undercarriage allows easy transport and in-woods travel between worksites and improves productivity.
- The efficient engine and hydraulic system cooling E-Fans with reverse capability improve engine efficiency by controlling engine temperatures.
- Cat® Long-life fuel and hydraulic oil filters with extended service intervals reduce maintenance costs.

UNMATCHED OPERATOR COMFORT



- Next Generation Certified Forestry ROPS side-entry cab is engineered for operator safety and features a wide door and a tilt-up armrest.
- 32 mm (1.25") polycarbonate front safety window and smaller cab pillars enhance jobsite and work task visibility.
- The dual HVAC system keeps operators comfortable in cold and warm weather.
- A wide heated and cooled air-suspension seat makes year-round work more pleasant.
- All controls are within easy reach to reduce twisting and turning and keep you focused on the work area.
- Cab risers — 165 mm (6 1/2") fixed or 1219 mm (48") hydraulic tilt — are available to meet your work needs.
- Stow your gear with in-cab storage beneath, behind the seat, and in the consoles.
- Use the standard radio's USB ports and Bluetooth technology to connect personal devices and make hands-free calls.

SIMPLE OPERATION

- Cat continues to improve user interface functionality for operators of all skill levels. The touchscreen monitor is an easy-to-use operating tool that presents the jobsite dashboard with an intuitive format.
- Start the engine with a push button or use a Bluetooth key fob or the unique Operator ID function.
- Navigate quickly on the optional high-resolution 203 mm (8 in) or 254 mm (10 in) touchscreen monitor.
- Make moving the excavator much easier with the optional Cat® Stick Steer. Push a button and use one hand to travel and turn instead of both hands or feet on levers or pedals.
- Not sure how a function works or how to maintain the machine? Always have the operator's manual at your fingertips in the touchscreen monitor.
- Optional auxiliary relay powers on and turns off CB radios and other attachments without you taking your hands off the joysticks.



VERSATILE CONFIGURATIONS

- A handy addition to any fleet, the FM528 is the first Cat Forest machine to offer a fixed or live heel and blade option for versatile application.
- This multi-configuration machine includes a processor, roadbuilder, log loader, and provides optional knuckleboom controls. It can go to work in the woods or the millyard to boost productivity and profitability.
- The optional narrow, high, long undercarriage allows easy transport and in-woods between worksites and improves productivity.

General Forestry

1. The General Forestry model is ideal for road work, grappling, processing, and delimiting.
2. With a reach boom and quick coupler, you can equip the FM528 with a processor, bucket, thumb, mulcher, and other attachments to get work done quickly and efficiently.
3. A frontless option allows you to customize the machine to fit your applications.

Log Loader

1. The log loader configuration is ideal for truck loading, power clam applications, and millyard work.
 2. An under-mounted heel cylinder provides maximum force for shovel logging with a Cat grapple. A variable displacement pump delivers high-flow rotating capability for heel and log grapples and Power Clam and Butt-n-Top grapples.
 3. An overmounted heel cylinder provides maximum clearance to load trucks and increases lift height for millyard applications.
 4. The optional fixed heel log loader with integrated drop nose stick effectively extends your reach from a stationary point, allowing the operator to lift logs without needing to move the machine.
- Rugged, reliable, simple-to-service Cat forestry grapples range in size from 1322 mm (52") to 1524 mm (60").
 - Triple grouser shoes are available to provide high maneuverability while minimizing disturbance in soft, wet underfoot conditions.



EASY MAINTENANCE



- Boost productivity with proactive service reminders. The Integrated Vehicle Health Management system alerts the operator with step-by-step service guidance and the parts needed so you don't experience unnecessary downtime.
- Using Cat® genuine oil and filters and doing typical Scheduled Oil Sampling (S-O-SSM) monitoring will extend the current service interval, giving you greater uptime to do more work.
- S-O-S ports simplify maintenance and allow for quick, easy extraction of fluid samples for analysis.
- The diesel particulate filter requires no maintenance.
- Fuel and engine oil filters are synchronized to be changed at 1,000 hours.
- The latest hydraulic oil filter provides high-quality filtration performance, anti-drain valves to keep oil clean when the filter is replaced, and the extended replacement interval offers efficiency and convenience.

SAFELY HOME EVERY DAY



- The cab meets applicable industry standards for Rollover Protective Structure (ROPS)/Falling Object Protective Structure (FOPS)/Operator Protective Guards (OPG) and protects the operator inside the cab.
- Access most routine maintenance points at ground level.
- The right-hand service platform design provides easy, safe, and quick access to the upper service platform; the service platform steps use an anti-skid punch plate to prevent slipping. Handrails are provided for easy access.
- 32 mm (1.25") polycarbonate safety front window and smaller cab pillars enhance jobsite and work task visibility.
- Standard rearview camera enhances jobsite visibility; right-hand-sideview camera is optional.
- The monitor's slope and grade indicator tell you the machine's position to help optimize its performance.
- A signaling/warning horn and travel alarm enhance jobsite safety.
- Add optional inspection lighting to illuminate the engine, pump, battery, and cooling compartments, making service work more accessible.

- The Cat C4.4 173 hp (129 kW) engine meets U.S. EPA Tier 4 Final, EU Stage V, and Japan 2014 emission standards.
- Cat diesel engines are required to use ULSD (ultra-low sulfur diesel fuel with 15 ppm of sulfur or less) or ULSD blended with the following lower-carbon intensity fuels*** up to: 20% biodiesel FAME (fatty acid methyl ester)** or 100% renewable diesel, HVO (hydrogenated vegetable oil) and GTL (gas-to-liquid) fuels. Refer to guidelines for successful application. Please consult your Cat dealer or “Caterpillar Machine Fluids Recommendations” (SEBU6250) for details.
- Auto Engine Speed Control reduces unnecessary fuel burn and greenhouse gas emissions by allowing the engine to automatically go into idle mode when the machine is not working.
- Extended maintenance intervals reduce downtime and decrease the amount of fluid and filters that are replaced over the machine’s life.
- Cat® VisionLink displays the CO₂ emissions for monitored assets, calculated by fuel type for the Runtime Fuel Burned each day in a selected date range.
- Remote Services* is a suite of technologies that improve your jobsite efficiency. Remote Troubleshoot allows your Cat dealer to perform diagnostic testing on your connected machine remotely, pinpointing potential issues while the machine is in operation.
- Remote Troubleshoot ensures the technician arrives with the correct parts and tools the first time, eliminating additional trips to save you time and money.
- Remote Flash updates on-board software without a technician being present, potentially reducing update time by as much as 50%. You can initiate the update when convenient, increasing your overall operating efficiency.

**Must be within cell range coverage. The Cat App helps you manage your assets – at any time – right from your smartphone. You can see your fleet location, hours, and other information you need to see. You will get critical alerts for required maintenance, and you can even request service from your local Cat dealer.*

***Engines with no aftertreatment devices can use higher blends, up to 100% biodiesel (for use of blends higher than 20% biodiesel, consult your Cat dealer).*

****Tailpipe greenhouse gas emissions from lower-carbon intensity fuels are essentially the same as traditional fuels.*



INCREASE YOUR PRODUCTIVITY AND PROFIT

WITH CAT ATTACHMENTS

Easily expand the performance of your machine by utilizing any of the variety of Cat attachments. Each Cat attachment is designed to fit the weight and horsepower of the Cat machine for improved performance, safety, and stability.



GRAPPLES

Cat log loading grapples are made with high-strength steel for maximum performance. They are ideal for picking and sorting, bunching and loading, and shoveling applications. Bolt-on access panels make them easier to service.



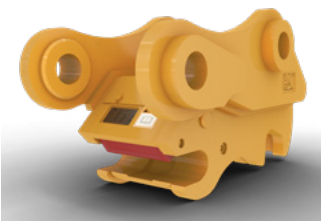
MULCHERS

Cat forestry mulchers make land clearing fast and safe. Staggered teeth quickly turn trees into mulch; a hydraulically controlled door lets the operator direct mulch flow to enhance jobsite safety.



BUCKETS

Cat buckets move material quickly and efficiently. Their unique design enables more efficient filling and better operator control, which improves overall productivity.



COUPLERS

Cat quick couplers allow you to change between tools in minutes, making the machine capable of doing a variety of money-making tasks.



ATTACHMENT TRACKING MADE EASY

The Cat PL161 Attachment Locator is a Bluetooth device that makes finding grapples, buckets, and other gear quick and easy. The excavator's onboard Bluetooth reader will locate the device automatically.

TECHNICAL SPECIFICATIONS

Engine

Engine Model	Cat C4.4TTA	
Net Power – ISO 9249	127 kW	170 hp
Engine Power – ISO 14396	129 kW	173 hp
Net Power – ISO 9249 (DIN)	173 hp (metric)	
Engine Power – ISO 14396 (DIN)	175 hp (metric)	
Bore	105 mm	4 in
Stroke	127 mm	5 in
Displacement	4.4 L	269 in ³
Biodiesel Capability	B20 ¹	
Emissions	Meets U.S. EPA Tier 4 Final and EU Stage V emission standards.	

Net power advertised is the power available at the flywheel when the engine is equipped with fan, air intake system, exhaust system, and alternator with engine speed at 2,200 rpm. Advertised power is tested per the specified standard in effect at time of manufacture.

¹Cat diesel engines are required to use ULSD (ultra-low sulfur diesel fuel with 15 ppm of sulfur or less) or ULSD blended with the following lower-carbon intensity fuels** up to: 20% biodiesel FAME (fatty acid methyl ester)* or 100% renewable diesel, HVO (hydrotreated vegetable oil) and GTL (gas-to-liquid) fuels. Refer to guidelines for successful application. Please consult your Cat dealer or Caterpillar Machine Fluids Recommendations (SEBU6250) for details.

*Engines with no aftertreatment devices can use higher blends, up to 100% biodiesel (for use of blends higher than 20% biodiesel, consult your Cat dealer).

**Tailpipe greenhouse gas emissions from lower-carbon intensity fuels are essentially the same as traditional fuels.

Hydraulic System

Main System – Maximum Flow	429 L/min	113 gal/min
Maximum Pressure – Equipment	35 000 kPa	5,076 psi
Maximum Pressure – Equipment – Lift Mode	38 000 kPa	5,511 psi
Maximum Pressure – Travel	35 000 kPa	5,076 psi
Maximum Pressure – Swing	27 500 kPa	3,989 psi

Drive

Maximum Travel Speed	5.7 km/h	3.5 mile/h
Maximum Drawbar Pull	201 kN	45,187 lbf

Swing Mechanism

Swing Speed	11 r/min	
Maximum Swing Torque	82 kN-m	60,480 lbf-ft

Weights

General Forestry (GF)	27 100 kg	59,700 lb
High long undercarriage (High LC), Side Entry Cab (SEC) 165 mm (6.5") fixed riser, 5.7 m (18'7") Reach boom, R3.7 m (12'2") drop nose stick, 700 mm (28") double grouser (DG) shoes, no processor head.		
Log Loader Under/Under (U/U)	28 700 kg	63,300 lb
High LC, SEC 1219 mm (48") tilting riser, 5.9 m (19'6") Straight boom, 3.5 m (11'6") u/u stick with live heel, 700 mm (28") double grouser (DG) shoes, no grapple.		
Forestry Road Builder	28 200 kg	62,170 lb
High LC, SEC 165 mm (6.5") fixed riser, 5.7 m (18'7") Reach boom, R2.9 (9'7") thumb ready stick, 700 mm (28") double grouser shoes, 1.2 m ³ (1.6 yd ³) HD bucket.		
Log Loader with Fixed Heel	28 600 kg	63,050 lb
High LC, SEC 1219 mm (48") tilting riser, 5.9 m (19'6") Straight boom, 5.8 m (19') drop nose log loader stick, 700 mm (28") double grouser shoes, no grapple.		

Service Refill Capacities

Fuel Tank	345 L	91.1 gal
Cooling System	25 L	6.6 gal
Engine Oil	15 L	4 gal
Swing Drive	5 L	1.3 gal
Final Drive – Each	5 L	1.3 gal
Hydraulic System – Including Tank	248 L	65.6 gal
Hydraulic Tank	129 L	34.1 gal
Diesel Exhaust Fluid (DEF) Tank	26 L	6.9 gal

Dimensions

Shipping Height – Tilted Cab	3420 mm	11.3 ft
Handrail Height	2990 mm	9.8 ft
Length: General Forestry – Boom Stretched Out	11 690 mm	38.3 ft
Length: Log Loader – Boom Stretched Out	13 430 mm	44.1 ft
Tail Swing Radius	2830 mm	9.3 ft
Counterweight Clearance	1040 mm	3.4 ft
Ground Clearance for Standard Undercarriage	435 mm	1.4 ft
Ground Clearance for High Undercarriage	610 mm	2 ft
Track Length	4460 mm	14.7 ft
Track Length to Center of Rollers	3620 mm	11.9 ft
Track Gauge	2380 mm	7.8 ft
Transport Width with Catwalk	3350 mm	11 ft
Transport Width without Catwalk	3230 mm	10.7 ft

General Forestry configuration with High LC, SEC with 165 mm (6.5") fixed riser, 5.7 m (18'7") Reach boom, 2.8 m (9'7") Thumb ready stick, 700 mm (28") double grouser (DG) shoes

Working Ranges

Max Reach at Stick Nose at Ground Level – General Forestry Road Builder	9830 mm	32.3 ft
Max Reach at Grapple Mount on Heel at Ground Level – Log Loader Under/Under	10 970 mm	36 ft
Max Reach at Stick Nose at Ground Level – General Forestry Processor	8860 mm	29'1"
Max Reach at Stick Nose – Fixed Heel	11 620 mm	38'1"

Air Conditioning System

The air conditioning system on this machine contains the fluorinated greenhouse gas refrigerant R134a (Global Warming Potential = 1430). The system contains 2.1 (22" Riser CAB)/2.2 (48"/72" Riser CAB) kg of refrigerant, which as a CO₂ equivalent of 3.003/3.146 metric tonnes.

STANDARD & OPTIONAL EQUIPMENT

NOTE: Standard and optional equipment may vary. Consult your Cat dealer for details.

	Standard	Optional
UNDERCARRIAGE AND STRUCTURES		
Tie down points	✓	
Heavy-duty travel motor guards	✓	
Heavy-duty bottom guards	✓	
Full length track guiding guards	✓	
Heavy-duty recoil springs	✓	
Heavy-duty hydraulic swivel guard	✓	
Straddle mounted carrier rollers	✓	
4.2 mt (9,260 lb) Counterweight (blade configuration only)		✓
5.8 mt (12,790 lb) Counterweight		✓
700 mm (28 in) Triple and Double grouser shoes, for High-LC (D5 type link)		✓
760 mm (30 in) Triple grouser shoes, for High-LC (D5 type link)		✓
700 mm (28 in) Triple and Double grouser shoes, for SD-LC (326 track link)		✓
600 mm (24 in) Double grouser shoes, for High-LC (D5 type link)		✓
Severe Duty – Long undercarriage		✓
High – Long undercarriage with 175 mm (7.5") pitch		✓
2980 mm (9'9") blade		✓
3170 mm (10'5") blade		✓
BOOMS AND STICKS		
5.7 m (18'7") Reach boom		✓
5.9 m (19'6") Straight boom		✓
2.9 m (9'6") Thumb-ready stick		✓
3.7 m (12'2") Drop Nose stick		✓
3.5 m (11'6") Under/Under stick		✓
3.8 m (12'6") Over/Under stick		✓
5.8 (19'2") Drop Nose Log Loader stick		✓
B1 family bucket linkage		✓
CAT TECHNOLOGIES		
VisionLink	✓	
Remote Troubleshoot	✓	
VisionLink Productivity (VisionLink subscription required)		✓

	Standard	Optional
CAB		
ROPS Forestry cab with polycarbonate windows	✓	
4-point harness seat belt	✓	
Heated and cooled seat with air-adjustable suspension	✓	
Integrated joysticks	✓	
Tilt-up left-side console	✓	
High-resolution touchscreen monitor – 203 mm (8")		✓
High-resolution touchscreen monitor – 254 mm (10")		✓
Bluetooth integrated radio (including USB, auxiliary port and microphone)	✓	
12V DC outlets	✓	
Keyless push-to-start engine control	✓	
Automatic bi-level air conditioner	✓	
LED dome and floor lights	✓	
Windshield wiper and washer	✓	
Behind seat storage	✓	
Retractable sunshade		✓
Side entry with 165 mm (6.5") fixed riser		✓
Side entry 1219 mm (48") tilting riser		✓
CB radio mounts		✓
Cat Stick Steer		✓
Auxiliary relay		✓
ENGINE		
Electric fuel priming pump	✓	
Three selectable modes: Power, Smart, Eco	✓	
Automatic engine speed control	✓	
Automatic engine idle shutdown	✓	
Up to 4600 m (15,092 ft) altitude capability	✓	
48° C (118° F) high-ambient cooling capacity	✓	
-32° C (-25° F) cold start capability	✓	
Hydraulic reverse fan	✓	
Two-stage fuel filter system	✓	
Double element air filter with integrated pre-cleaner	✓	
Cold start package with block heaters and ether assist		✓

(continued on next page)

STANDARD & OPTIONAL EQUIPMENT *(CONTINUED)*

NOTE: Standard and optional equipment may vary. Consult your Cat dealer for details.

	Standard	Optional
ELECTRICAL SYSTEM		
Maintenance-free 1000 CCA batteries (x4)	✓	
Centralized electrical disconnect switch	✓	
200-amp alternator	✓	
24-volt electric starting	✓	
Pre-start monitoring system	✓	
Horn and travel alarm	✓	
Tool control software	✓	
Secondary engine shut off switch	✓	
After engine shut down programmable time delay LED working lights	✓	
Premium lighting – General Forestry – 6 additional LED lights		✓
Premium lighting – Log Loader – 10 additional LED lights		✓

SERVICE AND MAINTENANCE		
Integrated vehicle health management system	✓	
Side-entry service platform	✓	
Grouped location for engine oil and fuel filters	✓	
Ground level dipstick for engine oil	✓	
S-O-S ports	✓	

HYDRAULIC SYSTEM		
Boom and stick regeneration circuits	✓	
Boom and stick drift reduction valve	✓	
Electronic main control valve	✓	
Automatic hydraulic oil warm up	✓	
Automatic swing parking brake	✓	
High performance hydraulic return filter	✓	
Automatic two speed travel	✓	
Bio hydraulic oil capability	✓	
High torque swing drive	✓	
Swing cushion valve	✓	
Tool control software	✓	
Fully pressurized hydraulic system	✓	
Medium pressure circuit		✓
Ground saw hydraulics		✓

	Standard	Optional
SAFETY AND SECURITY		
Caterpillar One Key security system	✓	
Lockable service doors	✓	
Lockable fuel cap and hydraulic tank	✓	
Right-hand rail and hand hold	✓	
Signaling/warning horn	✓	
Travel alarm	✓	
Swing alarm		✓
Ground-level secondary engine shutoff switch	✓	
Reaview camera	✓	
Hydraulic lock out lever	✓	
Storage tray in pump room		✓
Right-hand sideview camera		✓
Inspection lighting		✓

For more complete information on Cat products, dealer services and industry solutions, visit us on the web at www.cat.com.

© 2025 Caterpillar. All Rights Reserved.

VisionLink is a trademark of Caterpillar Inc., registered in the United States and in other countries.

Materials and specifications are subject to change without notice. Featured machines in photos may include additional equipment. See your Cat dealer for available options.

CAT, CATERPILLAR, LET'S DO THE WORK, their respective logos, SmartBoom, S·O·S, Product Link, "Caterpillar Corporate Yellow," the "Power Edge" and Cat "Modern Hex" trade dress as well as corporate and product identity used herein, are trademarks of Caterpillar and may not be used without permission.
www.cat.com www.caterpillar.com

AEXQ4158-00
Build Number: 07H
(Aus-NZ, N Am, Chile)

