

140

MOTOR GRADER



Engine Power
Operating Weight

133-172 kW (179-231 hp)
19 344 kg (42,647 lb)

Cat® C9.3 engine meets U.S. EPA Tier 4 Final and EU Stage V emission standards.



THE CAT[®] 140

GRADING GREATER LENGTHS

The **Cat 140** Motor Grader gives you more precise grading in a comfortable cab. With a range of technology options, you can improve grading accuracy and save on materials. With extended maintenance intervals, the 140 Motor Grader sets the pace for low operating costs, while maintaining productivity and efficiency.



GET TO BETTER GRADE

The Cat 140 Motor Grader combines comfort, precision and Cat Grade technology options for high performance.

- + SPEND LESS TIME AND MONEY ON REGULAR MAINTENANCE
- + MAXIMUM CAB COMFORT
- + FACTORY-INTEGRATED GRADE TECHNOLOGY OPTIONS



LOWER MAINTENANCE COSTS

Extend typical maintenance intervals with the filtration system and grouped filters for easy access.

CAB DESIGNED FOR MAXIMUM COMFORT

Be productive and comfortable with the joystick controls and adjustable seat.

SAVE MATERIAL¹

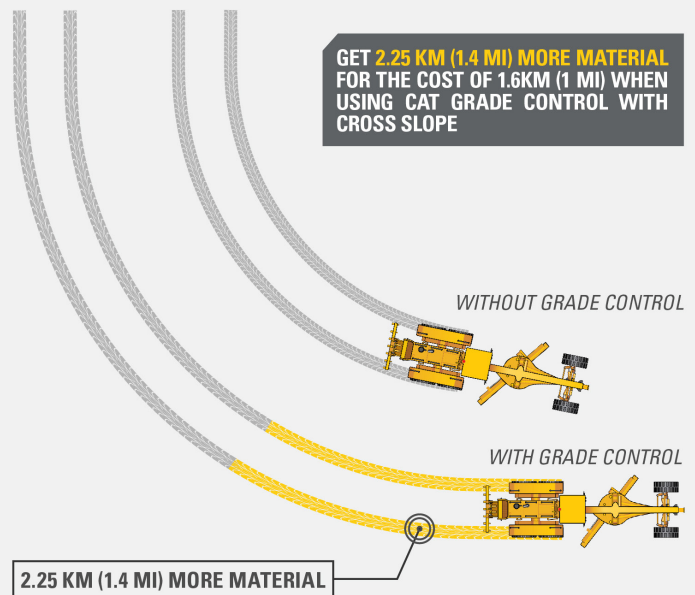
Use less material with scalable Cat Grade technology solutions to increase accuracy and consistency.

¹ Compared to not using Cat Grade Control



SAVE MORE MATERIAL.

Use 40% less material with Cat® Grade Control with Cross Slope.



SCENARIO:

1559 M³/KM (2,039 YD³/MI) MOVED WITH NON-GRADE CONTROL - 924 M³/KM (1208 YD³) MOVED WITH GRADE CONTROL = 635 M³/KM (831 YD³) MATERIAL SAVED

OPTIONAL GRADE TECHNOLOGY

DIGITAL BLADE SLOPE METER

View blade slope on the integrated machine display with the Digital Blade Slope Meter.

CROSS SLOPE

Cat Grade with Cross Slope is an integrated system that enables you to achieve grade faster and more accurately by automating the cross slope of the blade, allowing you to get more done in the same amount of time.

CAT PRODUCTION MEASUREMENT SYSTEM

Manage your fleet of machines while reducing fuel burn with Cat Production Measurement System option. The Efficiency Coach and Application Segmentation work together to monitor operators and machines simultaneously. Measure your jobsite's efficiency and productivity from anywhere on the website.

CAT GRADE WITH 3D

Cat Grade with 3D for motor graders is a machine integrated grade control system that helps you get to grade faster with more accuracy, efficiency and productivity. Automatic blade control reduces operator inputs and the number of passes to get the job done to save you time and money.

ATTACHMENT READY OPTION (ARO)

Cat Grade Attachment Ready Option (ARO) integrates easily with Cat Grade and other grade control systems to help you get the most out of your motor grader. Stable Blade helps improve your finished surface quality by reducing machine bounce. All Cat Grade systems are compatible with radios and base stations from Trimble, Topcon, and Leica. Already invested in a grade infrastructure? You can install grade systems from Trimble, Topcon, and Leica onto the machine.

USE LESS MATERIAL WITH CAT GRADE TECHNOLOGY



CAT EQUIPMENT MANAGEMENT TECHNOLOGY TAKES THE GUESSWORK OUT OF MANAGING YOUR EQUIPMENT

Cat Equipment Management Technology telematics technology helps take the complexity out of managing your jobsites by gathering data generated by your equipment, materials and people and serving it up to you in customizable formats.

PRODUCT LINK™

Product Link™ collects data automatically and accurately from your assets – any type and any brand. Information such as location, hours, fuel usage, productivity, idle time, maintenance alerts, diagnostic codes and machine health can be viewed online through web and mobile applications.



VISIONLINK®

Access information anytime, anywhere with VisionLink® – and use it to make informed decisions that boost productivity, lower costs, simplify maintenance and improve safety and security on your jobsite. With different subscription level options, your Cat dealer can help you configure exactly what you need to connect your fleet and manage your business without paying for extras you don't want. Subscriptions are available with cellular or satellite reporting or both.



Remote Services is a suite of technologies that improves your jobsite efficiency.

Remote Troubleshoot allows your Cat dealer to perform diagnostic testing on your connected machine remotely, pinpointing potential issues while the machine is in operation. Remote Troubleshoot helps ensure the technician arrives with the correct parts and tools the first time, eliminating additional trips to save you time and money.

Remote Flash updates onboard software to potentially reduce update time by as much as 50%. You can initiate the update when convenient, increasing your overall operating efficiency.





LOWER MAINTENANCE COSTS

LONGER SERVICE INTERVALS

Maintenance intervals are synchronized to reduce downtime. Instead of changing filters every 500 hours, filters are changed at 1,000 hours.

GROUPED FILTERS

Grouped filters provide easy access for preventive maintenance. Longer service intervals produce less waste and can reduce preventive maintenance costs.

GROUND-LEVEL FLUID FILL

Ground-level fluid filling reduces the need to climb onto the machine. Combine that with a large fuel capacity, and you can work longer without the need to refuel.

FEEL THE CONTROL AND POWER WITH THE ALL-WHEEL DRIVE OPTION

Providing maximum power of 188 kW (252 hp) and full power turns, the all-wheel drive option helps you get the best footing.



MAXIMUM TRACTION WITH ALL-WHEEL DRIVE

The all-wheel drive (AWD) option assists with traction and maneuvering the machine, so you can work in any environment. The increased power with all-wheel drive handles rough terrain with extra traction for better productivity.

JOYSTICK CONTROLS

Joystick controls help to reduce effort and strain on your body while offering up to 78% less arm movement to help reduce fatigue.

ISO-CERTIFIED ROPS

The ISO-certified rollover protective structure (ROPS) cab is sound suppressed and sealed. The high-capacity HVAC system dehumidifies and pressurizes the cab, circulates fresh air, seals out dust and keeps windows clear.

COMFORTABLE CAB

Optional air suspension seat features multiple ergonomic adjustments, allowing you to find your ideal comfort level. Convenience features include optional radio, cup holder and ample storage.

ADJUSTABLE OPTIONS

COMFORT WHERE IT COUNTS





CONVENIENT SETTINGS

Get all the information you need, including integrated technology options, on the 10-inch touchscreen display including rear camera, preventive maintenance alerts, gear and speed, and more.



ENHANCED VISIBILITY

With angled windows and rear and side-view mirrors, you can see the jobsite all around you. The integrated rear view HD camera on the 10-inch display offers a wide view of the rear of the machine to get the best visibility.



STOP SAFELY

If the engine should unexpectedly stall, you can count on the secondary steering to steer the machine safely. When the main pump pressure drops, the secondary steering system will turn on automatically.



EASY ON AND OFF

Work safely using three points of contact when entering and exiting the machine with strategically placed walkways and grab rails.

The 140 Motor Grader is equipped with the six-cylinder Cat C9.3 engine for power and reliability. Optimized power in all gears helps to get the job done.

PROVEN POWER AND RELIABILITY ELEVATE YOUR PERFORMANCE



REDUCE COOLING SYSTEM CLEANING

The reversing fan option helps reduce maintenance costs and downtime by preventing material from building up and blocking air flow by the rear door intake screen in high-debris applications. This reversing fan runs automatically, and operator can adjust the frequency of when the fan reverses and can initiate a manual purge if needed.



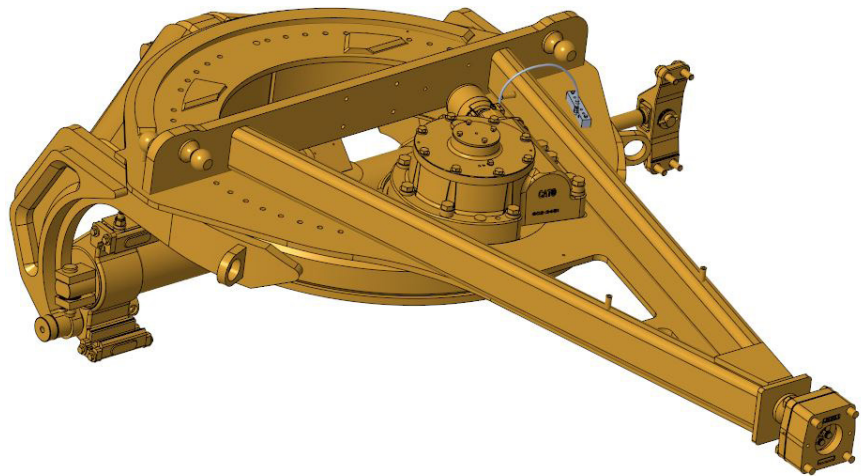
SAVE IN MAINTENANCE COSTS

Keep your circle moldboard tight for grade precision throughout the motor grader's life. Durable structures with drawbar circle moldboard adjustments save you service time with replaceable wear inserts with standard or top adjust options.

HIGH PERFORMANCE CIRCLE

The optional high performance circle (HPC) for the Cat 140 Motor Grader improves machine performance, efficiency and uptime availability.

- + When paired with Cat-exclusive extended life blade rail wear strips, the HPC reduces total cost of ownership for the drawbar circle moldboard and downtime.
- + The HPC helps to eliminate hours of monthly planned maintenance for frequent inspection, wear strip replacement and circle shoe adjustments associated with conventional circles.



SEE YOUR INVESTMENT GO FURTHER DESIGNED TO LAST

MAXIMIZE COMPONENT LIFE

Reduce daily greasing requirements with your machine's circle saver. The grease fitting is easy to access and maintain. Always keep your standard circle drive pinion greased with the Cat Circle Saver for maximum life.

REDUCE DAMAGE

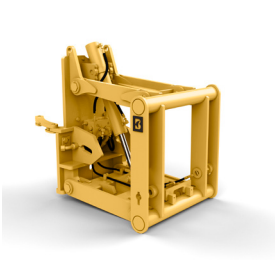
Keep your machine running smoothly with optional guarding in demanding applications. Guards defend against potential damage while running the machine for your transmission, filter, front axles and hydraulic pumps.

PRESERVE YOUR MACHINE

Protect your pinion drive and circle teeth from damage with the circle drive slip clutch. The standard slip clutch minimizes damage to machine or obstacles that the moldboard contacts.



MOVE MORE WITH CAT ATTACHMENTS



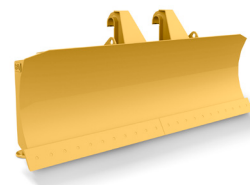
LIFT GROUP



SCARIFIER



MASTLESS SNOW WING



STRAIGHT BLADE



V-PLOW

ENHANCE YOUR PRODUCTIVITY

From rippers to plows, you can easily expand the versatility of your machine by utilizing a variety of Cat attachments. Each one is designed to fit your needs for improved performance, safety and stability.

TECHNICAL SPECIFICATIONS

See cat.com for complete specifications.

POWERTRAIN		
Engine Model	Cat® C9.3	
Emissions	Meets U.S. EPA Tier 4 Final, EU Stage V, and Japan 2014 emission standards.	
Net Engine Power Range	133-172 kW	179-231 hp
Net Engine Power Range - AWD	141-188 kW	189-252 hp
Displacement	9.3 L	567.5 in ³
Bore	115 mm	4.5 in
Stroke	149 mm	5.9 in
Torque Rise	38%	
Maximum Torque	1138 N-m	840 lbf-ft
Maximum Torque (AWD On)	1247 N-m	920 lbf-ft
Number of Cylinders	6	
Derating Altitude	3050 m	10,000 ft
<ul style="list-style-type: none"> • Net power advertised is the power available at rated speed of 2,000 rpm, measured at the flywheel when engine is equipped with fan running at minimum speed, air cleaner, aftertreatment, and alternator. 		

WEIGHT		
Machine Weight*	19 344 kg	42,647 lb
Machine Weight (AWD)*	20 236 kg	44,614 lb
* Typically equipped operating weight is calculated with push block, rear ripper/scarifier, 14.0R24 tires with single-piece (SP) rims, and other equipment.		

DIMENSIONS		
Height of machine	3308 mm	130 in
Length of machine*	10 136 mm	399 in
* Typically equipped with counterweight and ripper.		

BLADE RANGE			
Circle Center Shift			
Right	728 mm	28.7 in	
Left	695 mm	27.4 in	
Moldboard Side Shift			
Right	660 mm	26.0 in	
Left	510 mm	20.1 in	
Maximum Blade Position Angle	90°		
Blade Tip Range			
Forward	40°		
Backward	5°		
Maximum Shoulder Reach Outside of Tires			
Right	1978 mm	77.9 in	
Left	1790 mm	70.5 in	
Maximum Lift Above Ground	480 mm	18.9 in	
Maximum Depth of Cut	715 mm	28.1 in	

SERVICE REFILL CAPACITIES			
Fuel Capacity	394 L	104 gal	
Cooling System	57 L	15 gal	
Hydraulic System			
Total	100 L	26.4 gal	
Tank	64 L	16.9 gal	
Engine Oil	30 L	7.9 gal	
Trans./Diff./Final Drives	70 L	18.5 gal	
Tandem Housing (Each)	76 L	20 gal	
Front Wheel Spindle Bearing Housing	0.5 L	0.13 gal	
Circle Drive Housing	7 L	1.8 gal	
Diesel Exhaust Fluid	22 L	5.8 gal	

AIR CONDITIONING SYSTEM	
The air conditioning system on this machine contains the fluorinated greenhouse gas refrigerant R134a or R1234yf. See the label or instruction manual for identification of the gas.	
<ul style="list-style-type: none"> • If equipped with R134a (Global Warming Potential = 1430), the system contains 2.0 kg (4.4 lb) of refrigerant which has a CO₂ equivalent of 2.86 metric tonnes (3.152 tons). 	

STANDARD & OPTIONAL EQUIPMENT

Standard and optional equipment may vary. Consult your Cat® dealer for details. Not all options available in all regions.

POWERTRAIN	STANDARD	OPTIONAL
All wheel drive		•
Demand fan, hydraulic, no-tool swing out rear door	•	
Differential lock/unlock, automatic	•	
Economy mode	•	
Engine, C9.3	•	
Parking brake – multi-disc, sealed, oil-cooled	•	
Precleaner, snow		•
Transmission, autoshift		•
Reversing fan		•
Engine idle shutdown timer	•	
DRAWBAR CIRCLE MOLDBOARD	STANDARD	OPTIONAL
Top Adjust Drawbar, circle, and moldboard	•	
High Performance Circle (HPC)		•
Circle drive slip clutch	•	
Circle saver		•
OPERATOR ENVIRONMENT	STANDARD	OPTIONAL
Air conditioning with heater	•	
Articulation, automatic return-to-center	•	
Display, 10-inch LED with machine gear integration	•	
Rearview mirror	•	
Side-view mirrors		•
Rollover protective structure (ROPS) cab, sound suppressed 70 dB(A)	•	
Seat, cloth-covered, comfort suspension	•	

GUARDS	STANDARD	OPTIONAL
Articulation guard		•
Fenders, rear		•
Axle hose guard		•
Transmission guard		•
SAFETY AND SECURITY	STANDARD	OPTIONAL
Rearview camera		•
Secondary steering system	•	
Strategically placed walkways and grab rails	•	
Ground level fuel fill	•	
CAT TECHNOLOGY	STANDARD	OPTIONAL
Stable Blade		•
Product Link™	•	
Remote Services	•	
Cat Grade with Cross Slope		•
Cat Grade with Cross Slope Indicate		•
Cat Grade with 3D		•
Cat Grade Attachment Ready Option (ARO)		•
Auto Articulate	•	
Cat Production Measurement		•
ATTACHMENTS AVAILABLE FROM FACTORY	STANDARD	OPTIONAL
Push block		•
Ripper		•
Scarifier		•
Front lift group		•
ADDITIONAL ATTACHMENTS	STANDARD	OPTIONAL
Snow Wings		•
Plows		•
Blades		•
Blade Extensions		•
Brooms		•



オフロード法2014年
基準適合

For more complete information on Cat products, dealer services and industry solutions, visit us on the web at www.cat.com.

© 2024 Caterpillar. All Rights Reserved.

VisionLink is a trademark of Caterpillar Inc., registered in the United States and in other countries.

Materials and specifications are subject to change without notice. Featured machines in photos may include additional equipment. See your Cat dealer for available options.

CAT, CATERPILLAR, LET'S DO THE WORK, their respective logos, Product Link, "Caterpillar Corporate Yellow", the "Power Edge" and Cat "Modern Hex" trade dress as well as corporate and product identity used herein, are trademarks of Caterpillar and may not be used without permission.
www.cat.com www.caterpillar.com

AEXQ3191-00 (12-2024)
Build Number:15B
(N Am, Japan)

