



# Cat<sup>®</sup> TH0642

## TELEHANDLER

### FEATURES:

The Next Generation Cat<sup>®</sup> TH0642 Telehandler (TH) is focused on safety and ease of operation, with extended service intervals so it is ready to work when you are.

- **Comfortable Operator Station** – Cat Telehandlers offer a roomy operator station, with standard features like tilt steering column, dual charging ports, cupholder, and options like an enclosed cab with air conditioning and a top window sunshade to deliver excellent comfort when operating.
- **Easy To Operate** – Pilot controlled joystick with excellent multi-function capability, makes the Cat Telehandler easy to use. The intuitive LCD monitor provides easy to read machine information, with a choice of languages, and delivers a standard multi-operator code security system.
- **Safety On The Job Site** – Your safety is our top priority and the Cat Telehandler is designed to help keep you safer on the job. Standard equipment like the load stability indication (LSI) system, operator presence seat switch, rearview camera, high-visibility orange seat belt, and optional features such as the seat belt reminder system and hydraulic lockout switch, are just a few of the safety features we've built into the machine.
- **Simple Service For Less Downtime** – Maintenance is quick and easy on the Cat Telehandler. Daily check points are easy to access at ground level with grouped service points, and an easy-to-use service tool (patent pending) allows for quick and easy checks of the chain for tension, link wear, or stretching. Additionally, this tool provides integrated "go or no-go gauges" for quick checks of the boom wear pads. And you can rest easy with the standard 5-year/5,000-hour warranty for the main frame and boom sections.
- **Lower Operating Costs** – Equipped with features such as 500-hour greasing interval, 3,000-hour hydraulic oil, 6,000-hour extended life coolant, engine idle shutdown, and efficient hydraulics with a variable displacement pump, the Cat Telehandler was designed to help reduce your operating costs.
- **Cat Attachments** – Combining a wide selection of Cat Telehandler attachments with either the industry-standard TH coupler or the Integrated Tool Carrier (IT) coupler, the Next Generation Cat Telehandlers deliver exceptional versatility to meet the varied demands of today's job sites.
- **Unmatched Dealer Support** – Your Cat dealer is here to help you reach your business goals, from providing equipment solutions to operator training to service needs and beyond, your Cat dealer is ready to help!

# TH0642 Telehandler

## Specifications

### Engine

Model*	Cat C3.6	
Gross Engine Power – ISO 14396:2002	55 kW	74 hp
Displacement	3.6 L	220 in <sup>3</sup>

\*Meets U.S. EPA Tier 4 Final/EU Stage V emission standards.

### Operating Specifications\*

Operating Weight	9819 kg	21,647 lb
Rated Load Capacity	2722 kg	6,000 lb
Maximum (max.) Ground Bearing Pressure (Solid Tires)	1207 kPa	175 psi
Maximum Ground Bearing Pressure (Pneumatic Tires)	965 kPa	140 psi
Maximum Lift Height	12.8 m	42.1 ft
Maximum Forward Reach	8.4 m	27.6 ft
Frame Leveling	10°	
Travel Speed – forward (max.)	30 kph	19 mph
Travel Speed – reverse (max.)	22 kph	14 mph
Drawbar Pull – Loaded (calculated)	93.7 kN	21,064 lbf
Capacity at Maximum Height	2722 kg	6,000 lb
Capacity at Maximum Reach	408 kg	900 lbs
Turning Radius over Tires (2-wheel steer)	6.64 m	261 in
Turning Radius over Tires circle/4-wheel steer	3.97 m	156 in

\*Operating Specifications, and Dimensions are based on 55 kW (74 hp) engine, pneumatic tires, open canopy, 1829 mm (72 in) standard carriage, 1829 mm (72 in) forks, full fluids, and 80 kg (176 lb) operator.

### Weight Additions\*

Enclosed Cab (with Air Conditioning)	165 kg	364 lb
Solid Tires	788 kg	1,737 lb
Fenders (set of 4)	54 kg	119 lb

\*Add to base configured weight.

### Hydraulic System

System Operating Pressure	280 bar	4,061 psi
Auxiliary Hydraulic Pressure	280 bar	4,061 psi
Maximum Pump Flow	141 lpm	37 gpm
Auxiliary Hydraulic Flow	55 lpm	14.5 gpm

Variable displacement load sensing axial piston pump

### Service Refill Capacities

Fuel Tank	146 L	39 gal
Hydraulic Tank	90 L	24 gal
Hydraulic System	165 L	44 gal
Engine Crankcase	9.0 L	2.4 gal
Transmission	20 L	5.3 gal
Transfer Case	2.7 L	0.7 gal

### Transmission Speeds

Forward	4 Gears
Reverse	3 Gears

### Tires

14-24 Galaxy Giraffe XLW L-2 (Air)  
13-24 Camso TLH 792S (Solid)  
13-24 Maxam MS709 (Solid)

### Axles and Brakes

- Trunnion mounted planetary 55-degree steer axles
- High bias limited slip differential on front axle
- Service Brakes: Inboard wet disc brakes on front and rear axles
- Parking Brakes: Wet disc, spring applied hydraulic release (front axle)

### Boom Performance/Cycle Times

Boom Up	12.8 sec
Boom Down	14.2 sec
Tele Out	14.2 sec
Tele In	13.3 sec

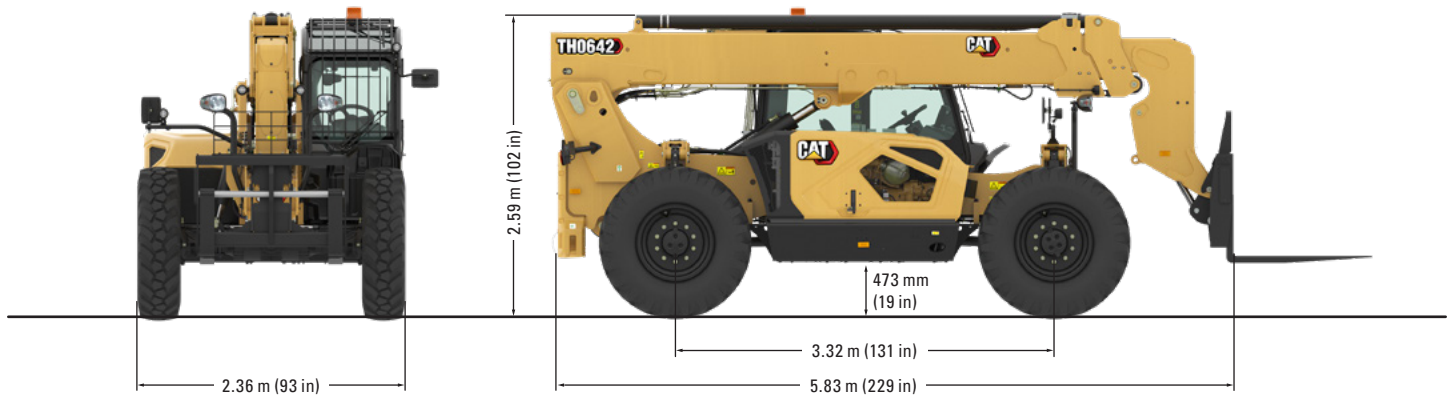
### Optional Work Tool Attachments

### Coupler Interface Weights

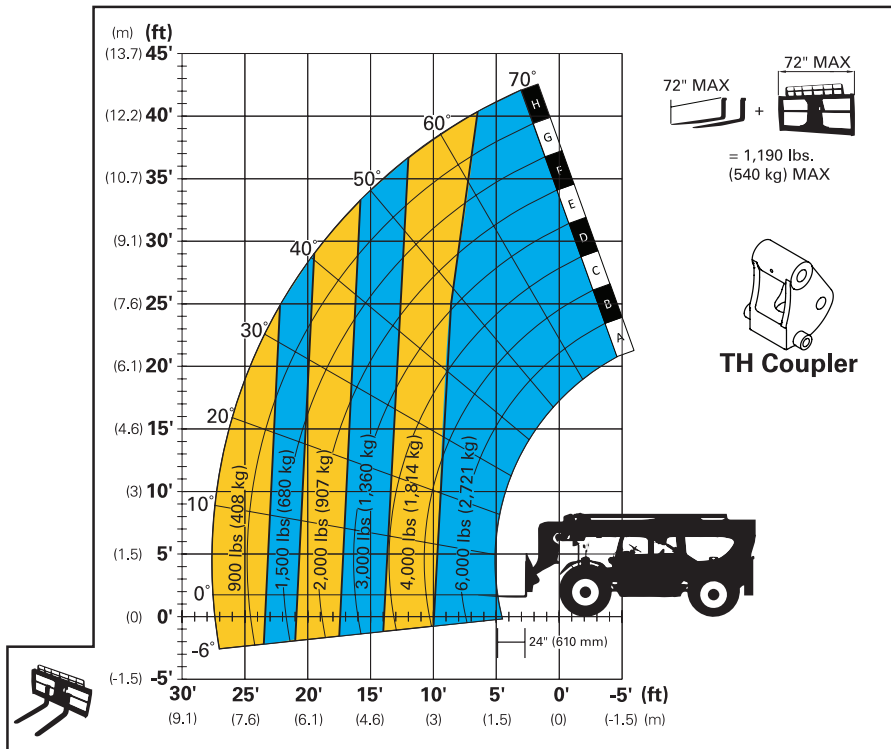
Carriages					
Standard Tilt					
	1270 mm	50 in	TH	240 kg	528 lb
			IT	248 kg	547 lb
	1829 mm	72 in	TH	283 kg	624 lb
			IT	292 kg	644 lb
Side Tilt/Rotating					
	1270 mm	50 in	TH	359 kg	791 lb
			IT	379 kg	836 lb
	1829 mm	72 in	TH	403 kg	887 lb
			IT	423 kg	933 lb
Dual Hydraulic Fork Positioner					
	1829 mm	72 in	TH	423 kg	933 lb
			IT	439 kg	969 lb
Forks					
Pallet	1220 mm	48 in	—	90 kg	199 lb
	1525 mm	60 in	—	108 kg	238 lb
	1829 mm	72 in	—	126 kg	278 lb
Truss Boom	3.7 m	12 ft	TH	393 kg	866 lb
			IT	385 kg	848 lb
Bucket					
General Purpose					
	1.5 yd <sup>3</sup>		TH	531 kg	1,171 lb
			IT	536 kg	1,182 lb

## Specifications (continued)

### Dimensions (All dimensions are approximate.)



## Load Chart and Dimensions



### IMPORTANT

Rated lift capacities shown are for a machine equipped with the specified carriage and forks. Load Chart is for reference only, not intended for machine operation.

The machine must be level on a firm surface with undamaged, properly inflated tires. Machine specifications and stability are based on rated lift capacities at specific boom angles and boom lengths. (If specifications are critical, the proposed application should be discussed with your dealer.)

DO NOT exceed rated lift capacity loads, as unstable and dangerous machine conditions will result.

DO NOT tip the machine forward to determine the allowable load.

Use only approved attachments with proper material handler model/attachment load capacity charts displayed in the operator's cab.

*Due to continuous product enhancements, machine specifications and/or equipment changes may be made without prior notification. This machine meets or exceeds ANSI/ITSDF B56.6-2021, as originally manufactured for intended applications.*

# TH0642 Telehandler

## Standard and Optional Equipment

Standard and optional equipment may vary. Consult your Cat dealer for details.

ENGINE	
55 kW (74 HP)	●
COLD WEATHER	
Battery disconnect with lockout feature	●
Cold Weather Package	◐
Dual Battery, heavy duty	◐
Engine Block Heater	◐
Ether Starting Aid	◐
OPERATOR STATION	
Canopy	●
Enclosed Cab, heat	◐
Enclosed Cab, heat, air conditioner	◐
OPERATING ENHANCERS	
Operator Presence Seat Switch	●
Camera, rearview	●
Load Stability Indicator (LSI)	●
OPERATOR SEAT	
Seat – Mechanical Suspension	●
Seat – Mechanical Suspension Plus	◐
SEAT BELT	
Seat belt – 51 mm (2 in)	●
Seat belt – 75 mm (3 in)	◐
Seat belt with Indicator – 75 mm (3 in)	◐
OPERATOR STATION ACCESSORIES	
USB dual charging port (USB-A and USB-C)	●
Security, 4 digit operator code enabled	●
Security, Bluetooth® key	◐
Hydraulic lockout switch	◐
Wiper, front (enclosed cab only)	●
Wiper, rear (enclosed cab only)	◐
Wiper, roof (enclosed cab only)	◐
Sunshade (top window)	◐
Padlocks (set of 4)	◐
FENDERS	
Cab fender (Left Hand front)	●
Fenders (4 Wheels)	◐
GUARDING	
Window guard, front	◐
Window guard, top	◐
OTHER OPTIONS	
Frame cover	●
Retrieval hitch	●
Boom prop	◐
LIGHTS	
LED work lights – cab, boom	●
Beacon	◐
Rooding lights	◐
TELEMATICS	
PLE643 – Product Link™ Elite	●
TIRES	
Galaxy – pneumatic directional	◐
Camso – solid directional	◐
Maxam – solid non-directional	◐
ATTACHMENT COUPLER	
TH Coupler (Manual)	●
IT Coupler (Manual)	◐
IT Coupler (Hydraulic)	◐
AUXILIARY HYDRAULIC CONNECTIONS	
Capped auxiliary hydraulic lines	●
Twist to connect hydraulic quick disconnects	◐
CARRIAGE	
Standard Tilt – 1270 mm (50 in)	◐
Standard Tilt – 1829 mm (72 in)	◐
Side Tilt/Rotating – 1270 mm (50 in)	◐
Side Tilt/Rotating – 1829 mm (72 in)	◐
Hydraulic Fork Positioner – 1829 mm (72 in)	◐
FORKS	
Pallet Forks – 1220 mm (48 in)	◐
Pallet Forks – 1525 mm (60 in)	◐
Pallet Forks – 1829 mm (72 in)	◐
Cubing/Block Forks – 1220 mm (48 in)	○
Lumber Forks – 1525 mm (60 in)	○
OTHER WORK TOOL ATTACHMENTS	
General Purpose Bucket	◐
Truss Boom – 3.7 m (12 ft)	◐
Grapple Bucket	○
Material Handling Arm	○
Pipe and Pole Fork Grapple	○
Lifting Hook (Coupler Mtd)	○

- Standard
- ◐ Optional
- Available 2026/2027

The following information applies to the machine at the time of final manufacture as configured for sale in the regions covered in this document. The content of this declaration is valid as of the date issued; however, content related to machine features and specifications are subject to change without notice. For additional information, please see the machine's Operation and Maintenance Manual.

For more information on sustainability in action and our progress, please visit <https://www.caterpillar.com/en/company/sustainability>.

## Engine

- The Cat® C3.6 engine meets U.S. EPA Tier 4 Final and EU Stage V emission standards.
- Cat diesel engines are required to use ULSD (ultra-low sulfur diesel fuel with 15 ppm of sulfur or less) or ULSD blended with the following lower-carbon intensity fuels\* up to:
  - ✓ 20% biodiesel FAME (fatty acid methyl ester)\*\*
  - ✓ 100% renewable diesel, HVO (hydrotreated vegetable oil) and GTL (gas-to-liquid) fuels

Refer to guidelines for successful application. Please consult your Cat dealer or "Caterpillar Machine Fluids Recommendations" (SEBU6250) for details.

*\*Tailpipe greenhouse gas emissions from lower-carbon intensity fuels are essentially the same as traditional fuels.*

*\*\*Engines with no aftertreatment devices can use higher blends, up to 100% biodiesel (for use of blends higher than 20% biodiesel, consult your Cat dealer).*

## Air Conditioning System

- The air conditioning system on this machine contains 0.68 kg (1.5 lb) of refrigerant. The refrigerant is either R134a or R1234yf. If equipped with R134a (Global Warming Potential = 1430), the refrigerant in the system has a CO<sub>2</sub> equivalent of 0.972 metric tonnes (1.07 tons).

## Paint

- Based on best available knowledge, the maximum allowable concentration, measured in parts per million (PPM), of the following heavy metals in paint are:
  - Barium < 0.01%
  - Cadmium < 0.01%
  - Chromium < 0.01%
  - Lead < 0.01%

## Sound Performance

External sound power level, dB(A) (per ANSI/ITSDF B56.11.5-2023) – 82 dB(A)\*

Cab Configuration sound pressure level, dB(A) (per ISO 6396:2008) – 79 dB(A)

\*Measurements were conducted with properly installed and maintained cab doors and windows closed.

## Oils and Fluids

- Caterpillar factory fills with ethylene glycol coolants. Cat Diesel Engine Antifreeze/Coolant (DEAC) and Cat Extended Life Coolant (ELC) can be recycled. Consult your Cat dealer for more information.
- Cat Bio HYDO™ Advanced is an EU Ecolabel approved biodegradable hydraulic oil.
- Additional fluids are likely to be present, please consult the Operations and Maintenance Manual or the Application and Installation guide for complete fluid recommendations and maintenance intervals.

## Features and Technology

- The following features and technology may contribute to fuel savings and/or carbon reduction. Features may vary. Consult your Cat dealer for details.
  - Save fuel and reduce your greenhouse gas emissions with efficiency features such as operator control modes selectable through the display and with fuel management modes.
  - Extended maintenance intervals not only reduce downtime but decrease the amount of fluid and filters that are replaced over the life of the machine.
  - Auto Idle helps reduce unnecessary fuel burn and greenhouse gas emissions by allowing the engine to automatically go into idle mode when the machine is not working.

## Recycling

- The materials included in machines are categorized as below with approximate weight percentage. Because of variations of product configurations, the following values in the table may vary.

Material Type	Weight Percentage
Steel	55.16%
Iron	21.53%
Nonferrous Metal	1.15%
Mixed Metal	18.46%
Mixed-Metal and Nonmetal	0.56%
Plastic	0.32%
Rubber	0.02%
Mixed Nonmetallic	0.00%
Fluid	1.93%
Other	0.87%
Uncategorized	0.00%
Total	100.00%

- A machine with higher recyclability rate will ensure more efficient usage of valuable natural resources and enhance End-of-Life value of the product. According to ISO 16714:2008 (Earthmoving machinery – Recyclability and recoverability – Terminology and calculation method), recyclability rate is defined as percentage by mass (mass fraction in percent) of the new machine potentially able to be recycled, reused, or both.

All parts in the bill of material are first evaluated by component type based on a list of components defined by the ISO 16714:2008 and Japan CEMA (Construction Equipment Manufacturers Association) standards. Remaining parts are further evaluated for recyclability based on material type.

Because of variations of product configurations, the following value in the table may vary.

Recyclability – 97%





For more complete information on Cat products, dealer services, and industry solutions, visit us on the web at [www.cat.com](http://www.cat.com)

© 2025 Caterpillar  
All rights reserved

Materials and specifications are subject to change without notice. Featured machines in photos may include additional equipment. See your Cat dealer for available options.

CAT, CATERPILLAR, LET'S DO THE WORK, VisionLink, their respective logos, "Caterpillar Corporate Yellow," the "Power Edge" and Cat "Modern Hex" trade dress as well as corporate and product identity used herein, are trademarks of Caterpillar and may not be used without permission.

AEHQ8489-01 (08-2025)  
Replaces AEHQ8489-00  
Build Number: 01A  
(N Am)

