

FM558 GF/FM558 LL

FOREST MACHINE



Engine Model
Net Power – ISO 9249
Engine Power – ISO 14396

Cat® C7.1
222.5 kW (298 hp)
225.1 kW (302 hp)



FM558 GF/ FM558 LL

FOREST MACHINE

Put the Cat® FM558 to work and experience superior performance and extraordinary bottom-line results. In its size class, there's no better machine for moving timber. The FM558 has advanced safety and comfort features to make your shovel logging, loading, roadbuilding, and processing work more productive and enjoyable.



GENERAL FORESTRY



LOG LOADER

MAXIMUM POWER FOR MULTIPLE CONFIGURATIONS

The FM558 features the highest swing torque, lift, and travel performance for maximum shovel logging and processing productivity, as well as maximum reach in millyard applications in the Cat Forestry Fleet.

ENGINEERED FOR OPERATOR SAFETY

The Certified Forestry Rollover Protective Structure (ROPS) cab is sound-suppressed and sealed. Its exceptional, unobstructed jobsite view confidently supports and secures the operator when taking on challenging tree-moving work.

LOW OWNING AND OPERATING COSTS

Experience increased uptime and reduced costs with longer-life fuel and hydraulic oil filters. Cat fuel filters have double the life of the previous filters, and the hydraulic oil return filter provides up to 50% more service life.

LATEST FEATURES

Machine Setup Simplification

- At the touch of fingertips and navigating user-friendly icons, the latest operator oriented User Interface (UI) maximizes uptime and gets crews to work without delay. From re-ordering work tool lists to creating new work tool combinations as needed, operators can quickly set up machines and easily access information.

Foot Pedal Swing Control Kit

- The FM558 offers powerful, reliable performance optimized for challenging forestry tasks, and now, operators can enhance productivity and ease of operation with the optional Foot Pedal Swing Control Kit. This attachment integrates seamlessly with Caterpillar customizable joystick pattern software, enabling operators to personalize controls based on their preferences or job requirements. With the kit's two auxiliary pedals, operators can control the upper rotation of the machine using their feet, providing knuckleboom loader style of operation. The Foot Pedal Swing Control Kit is ideal for those looking to maximize control and efficiency in demanding forestry environments.

*Not all features are available in all regions. Please check with your local Cat dealer for specific offering availability in your area.
Build Number: 07H*

A Legendary Legacy that Leads

- Founded in 1925, Caterpillar established the standard for tractors and construction equipment from the outset. Over the years, the company's leaders have gained a great deal of knowledge about what works and what doesn't. Caterpillar has grown alongside its customers, developing new products for hardworking individuals who want to push the limits. With that history comes innovation, change, creation, and learning. Caterpillar has partnerships across multiple industries and companies, continually developing and refining its understanding of how equipment should operate. Our commitment to designing and building the world's best equipment is evident in every single product.

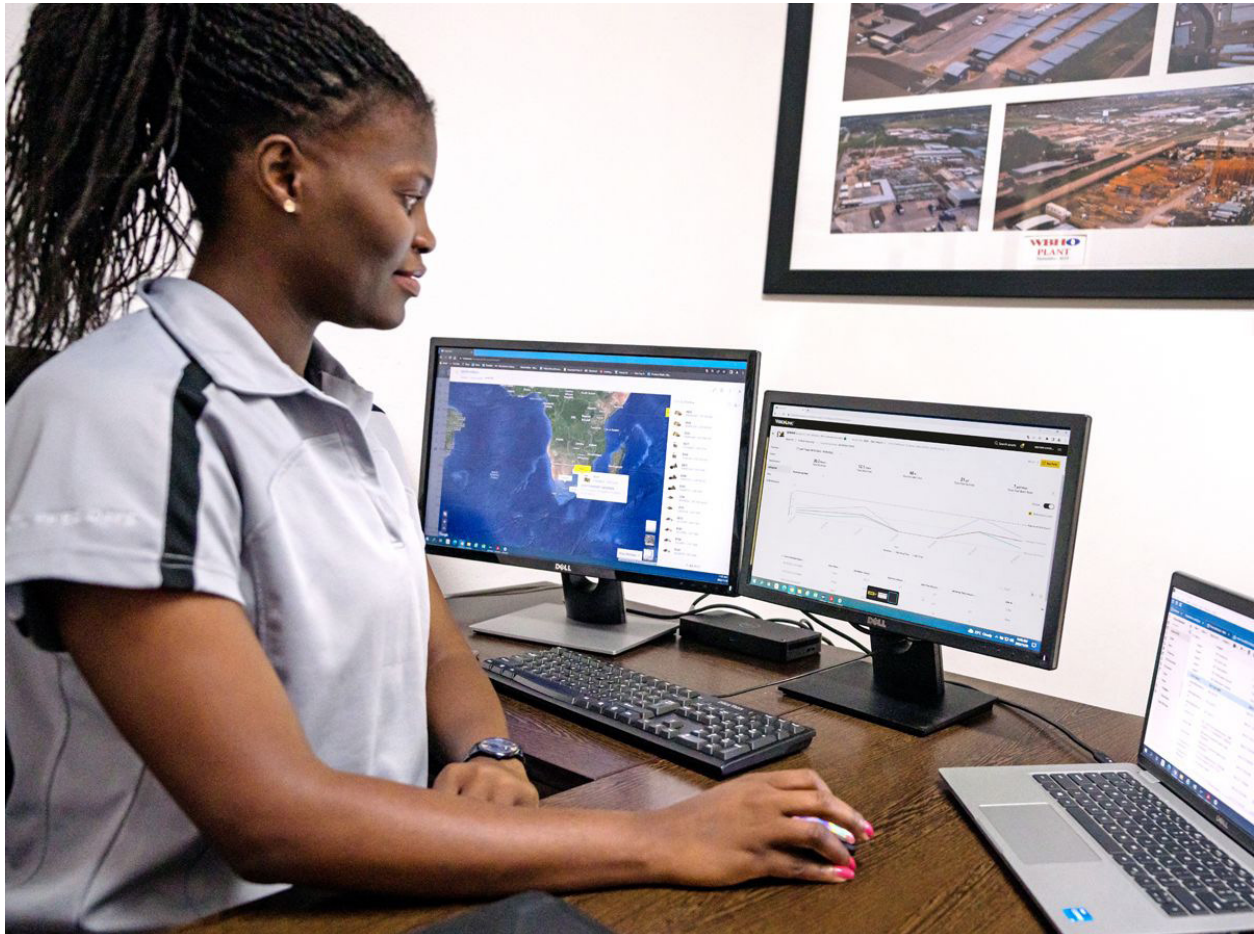


TAKE THE GUESSWORK OUT OF MANAGING YOUR EQUIPMENT

- The latest operator oriented User Interface (UI) has been designed to maximize uptime by allowing operators to easily re-order work tool lists and quickly create new work tool combinations. It also eliminates the need to measure up again when changing Cat work tool attachments and makes it manageable for a single person to check and adjust for bucket wear.
- VisionLink™ provides actionable data insights for all assets – regardless of fleet size or equipment manufacturer.* Review equipment data from your desktop or mobile device to maximize uptime and optimize assets. Dashboards provide information such as hours, miles, location, idle time, and fuel utilization. Make informed decisions that lower costs, simplify maintenance, and improve safety and security on your jobsite.
- VisionLink gathers and summarizes machine telematics and jobsite data from all your equipment – regardless of the manufacturer.* View actionable information such as idle time, fuel burn, location, load counts, total cycles, and more to improve machine efficiency, productivity, and utilization. Access data anywhere via a mobile, tablet, or desktop device – on or off the jobsite.
- Cat Inspect is a mobile application that allows you to easily perform digital preventative maintenance (PM) checks, inspections, and daily walkarounds. Inspections can easily be integrated with other Cat data systems like VisionLink so you can keep a close eye on your fleet.
- Remote Troubleshoot is a mobile application that allows your Cat dealer to perform diagnostic testing on your connected machine remotely to help resolve issues quickly and with less downtime.
- Remote Flash is a mobile application that allows you to update onboard software without a technician being present, allowing you to initiate software updates when convenient, increasing your overall operating efficiency.
- The Cat PL161 attachment locator allows you to track attachments across all worksites, reduce the number of lost attachments, and plan for attachment maintenance and replacement. The work tool recognition** feature automatically adjusts machine settings based on the selected tool.

**Data field availability can vary by equipment manufacturer.*

***Recognition feature available on select excavator models.
Consult your Cat dealer for details.*



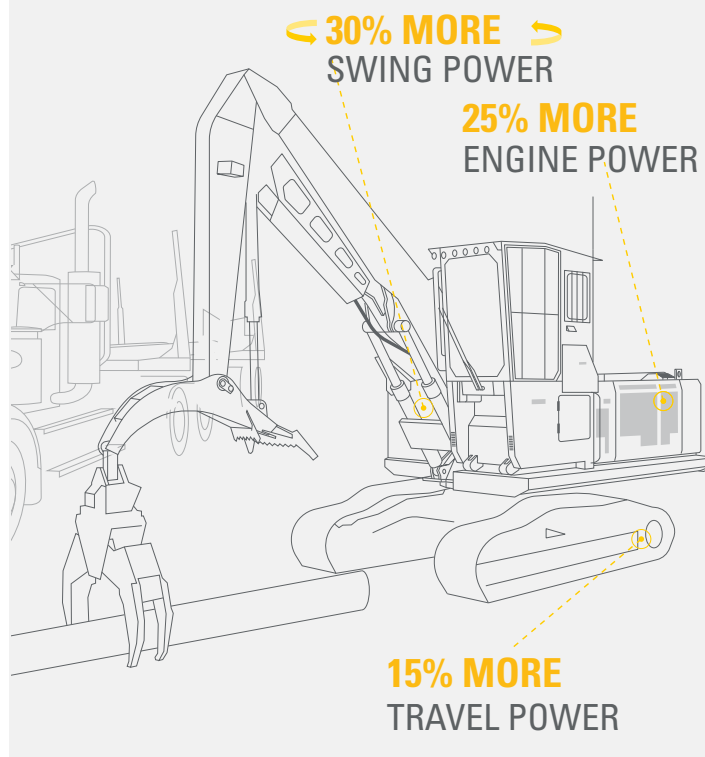
SUPERIOR PERFORMANCE



- The Cat C7.1 engine offers up to 25% more power* and can run on biodiesel and renewable fuels.
- Smart mode helps reduce fuel consumption by automatically matching engine and hydraulic power to working conditions.
- Pick and place logs with precision and power with the all-new electrohydraulic control system.
- Heavy lift mode with up to 30% more swing torque* helps you confidently move big logs.
- Cover ground faster than ever with up to 15% more travel power.*
- Auxiliary hydraulic options let you use Cat grapples and various other attachments.
- Work in extreme environments with standard high-ambient capability of 52° C (126° F) and cold start capability of -32° C (-25° F).

**All percentages are compared to the 2021 model year 558.*

GET MORE WORK DONE



UNMATCHED OPERATOR COMFORT

- Operators can choose the rear or side cab entry with up to 25% more space and a tilt-up console.*
- The dual HVAC system keeps operators comfortable in cold and warm weather.
- A wider heated and cooled air-suspension seat makes year-round work more pleasant.
- All controls are within easy reach to reduce twisting and turning and keep you focused on the work area.
- Cab Risers – 559 mm (22") tilting (for transport), side-entry cab with bolted retention system; 1219 mm (48") tilting (for transport), rear-entry cab with easy lock, and 1829 mm (72") tilting (for transport), rear-entry cab with easy lock - are available to meet your work needs.
- Stow your gear with in-cab storage beneath, behind the seat, and in the consoles.
- Use the standard radio's USB ports and Bluetooth® technology to connect personal devices and make hands-free calls.

**All percentages are compared to the 2021 model year 558.*



SIMPLE OPERATION



- Cat continues to improve user interface functionality for operators of all skill levels. The touchscreen monitor is an easy-to-use operating tool that presents the jobsite dashboard with an intuitive format.
- The Cat PL161 attachment locator is a Bluetooth device designed to let users know where their attachments are across all worksites, reduce the number of lost attachments, and plan for attachment maintenance and replacement. The PL161 integrates easily into VisionLink for full fleet management of machines and attachments from one smartphone or tablet dashboard to view location and tracking details.
- Productivity applications are displayed in grid view to read on the go, and touchscreen navigation is programmed to ensure job performance continues without any hold-ups.
- The keyless push-button engine start adds security by using operator ID codes to limit and track machine access. Codes can be entered manually or via an optional Bluetooth key fob.
- Navigate quickly on the standard high-resolution 254 mm (10 in) touchscreen monitor.
- Make moving the excavator much easier with optional Cat Stick Steer. Push a button and use one hand to travel and turn instead of both hands or feet on levers or pedals.
- Not sure how a function works or how to maintain the machine? Always have the operator's manual at your fingertips in the touchscreen monitor.
- Optional auxiliary relay powers on and turns off CB radios and other attachments without you taking your hands off the joysticks.



VERSATILE CONFIGURATIONS

General Forestry

1. The General Forestry model is ideal for road work, grappling, processing, and delimbing.
2. With a reach boom and quick coupler, you can equip the FM558 with a processor, bucket, thumb, mulcher, and other attachments to get work done quickly and efficiently.
3. A frontless option allows you to customize the machine to fit your applications.

Log Loader

1. The log loader configuration is ideal for truck loading, Butt-n-Top loading, power clam applications, and millyard work.
 2. An under-mounted heel cylinder provides maximum force for shovel logging with a Cat grapple. A variable displacement pump delivers high-flow rotating capability for heel and log grapples and Power Clam and Butt-n-Top grapples.
 3. An overmounted heel cylinder provides maximum clearance to load trucks and increases lift height for millyard applications.
- Rugged, reliable, simple-to-service Cat forestry grapples range in size from 1322 mm (52") to 1524 mm (60").



EASY MAINTENANCE



- Boost productivity with proactive service reminders. The Integrated Vehicle Health Management system alerts the operator with step-by-step service guidance and the parts needed so you don't experience unnecessary downtime.
- Expect lower maintenance cost than the previous model.
- The engine's regeneration system functions automatically with no operator input or interruption to work.
- Using Cat genuine oil and filters and doing typical S-O-SSM monitoring will double the current service interval to 1,000 hours, giving you greater uptime to do more work.
- S-O-S ports simplify maintenance and allow for quick, easy extraction of fluid samples for analysis.
- The diesel particulate filter requires no maintenance.
- Replace fuel filters at 1,000 hours – twice the interval from the previous filters.
- The latest hydraulic oil filter provides improved filtration performance, anti-drain valves to keep oil clean when the filter is replaced, and longer life with a 3,000-hour replacement interval – 50% longer than previous filter designs.
- The high-efficiency cooling fan runs only when needed; program intervals so the fan automatically reverses to keep cores clean without interrupting your work.
- Standard Product LinkTM provides location, machine hours, fuel usage, productivity, idle time, diagnostic codes, and other machine data on demand through VisionLink online interface, helping you improve jobsite efficiency with lower operating costs.
- Remote Troubleshoot^{**} connects you to a dealer service pro to help solve your problem and quickly get you to work.
- Remote Flash^{**} works around your schedule to ensure your machine's software is up to date for optimal performance.

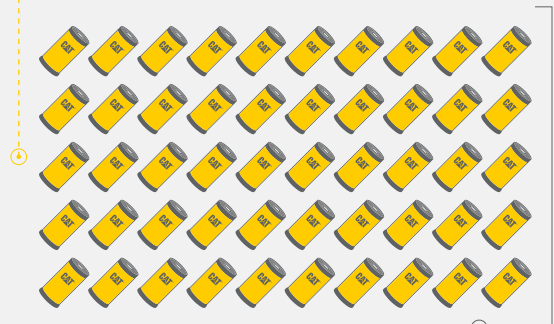
**All percentages compared to 2021 model year 558.*

***Requires cell coverage.*



SAVE MONEY

THE NEXT GENERATION 558 CONSUMES
UP TO 50 FEWER FILTERS*



FEWER FILTERS,
LONGER INTERVALS,
LESS COST,
MORE PRODUCTIVITY

***COMPARED TO PREVIOUS 558 OVER 12,000 HOURS**

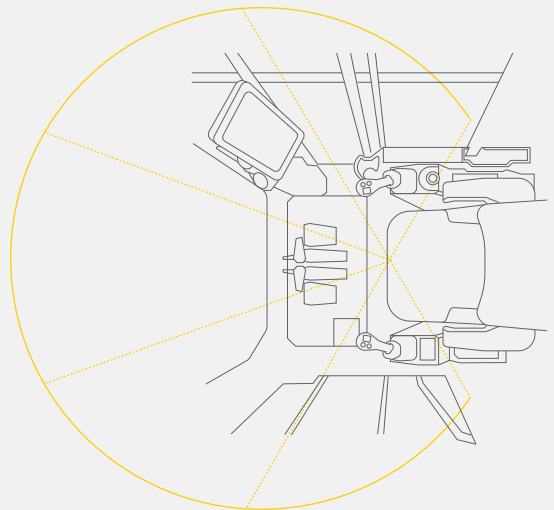
SAFETY



- The cab meets applicable industry standards for Rollover Protective Structure (ROPS)/Falling Object Protective Structure (FOPS)/Operator Protective Guards (OPG) and protects the operator inside the cab.
- Access most routine maintenance points at ground level.
- The right-hand service platform design provides easy, safe, and quick access to the upper service platform; the service platform steps use an anti-skid punch plate to prevent slipping.
- Handrails are provided for easy access.
- Larger 32 mm (1.25") polycarbonate front window, smaller cab pillars, and a flat engine hood improve visibility by up to 50%.
- Standard rearview camera enhances jobsite visibility; right-hand-sideview cameras are optional.
- The monitor's slope and grade indicator tell you the machine's position to help optimize its performance.
- A signaling/warning horn and travel alarm enhance jobsite safety.
- Make service work easier and safer with optional inspection lighting. With the flip of a switch, lights will illuminate the engine, pump, battery, and radiator compartments to enhance visibility.

**All percentages are compared to the 2021 model year 558.*

50% GREATER VISIBILITY*



*CAT NEXT GENERATION 558 COMPARED TO PREVIOUS 558

SUSTAINABILITY

- The Cat C7.1 engine meets U.S. EPA Tier 4 Final and EU Stage V emission standards.
- Cat diesel engines are required to use ULSD (ultra-low sulfur diesel fuel with 15 ppm of sulfur or less) and are compatible* with ULSD blended with the following lower-carbon intensity fuels** up to: 20% biodiesel FAME (fatty acid methyl ester)*** or 100% renewable diesel, HVO (hydrotreated vegetable oil) and GTL (gas-to-liquid) fuels. Refer to guidelines for successful application. Please consult your Cat dealer or “Caterpillar Machine Fluids Recommendations” (SEBU6250) for details.
- Auto Engine Speed Control reduces unnecessary fuel burn and greenhouse gas emissions by allowing the engine to automatically go into idle mode when the machine is not working.
- Extended maintenance intervals reduce downtime and decrease the amount of fluid and filters that are replaced over the machine life.
- Cat VisionLink displays the CO₂ emissions for monitored assets, calculated by fuel type for the Runtime Fuel Burned each day in a selected date range.
- Remote Flash minimizes downtime and maintenance time while keeping your asset running at maximum efficiency. Alerts for machine updates are sent virtually from your Cat dealer, and updates can be deployed without a dealer technician needing to be on site.
- Remote Troubleshoot decreases maintenance time and keeps your machine running with maximum efficiency by allowing your Cat dealer to virtually test the machine while working. Once a problem is identified, a technician can fix it the first time, saving time and money.

**While Caterpillar engines are compatible with these alternative fuels, some regions may not allow their use.*

***Tailpipe greenhouse gas emissions from lower-carbon intensity fuels are essentially the same as traditional fuels.*

****Engines with no aftertreatment devices are compatible with higher blends, up to 100% biodiesel (for use of blends higher than 20% biodiesel, consult your Cat dealer).*



INCREASE YOUR PRODUCTIVITY AND PROFIT

WITH CAT ATTACHMENTS

Easily expand the performance of your machine by utilizing any of the variety of Cat attachments. Each Cat attachment is designed to fit the weight and horsepower of the Cat machine for improved performance, safety, and stability.



GRAPPLES

Cat log loading grapples are made with high-strength steel for maximum performance. They are ideal for picking and sorting, bunching and loading, and shoveling applications. Bolt-on access panels make them easier to service.



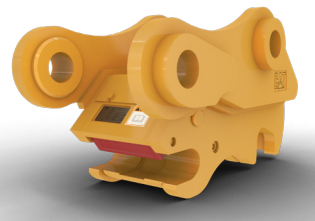
MULCHERS

Cat forestry mulchers make land clearing fast and safe. Staggered teeth quickly turn trees into mulch; a hydraulically controlled door lets the operator direct mulch flow to enhance jobsite safety.



BUCKETS

Cat buckets move material quickly and efficiently. Their unique design enables more efficient filling and better operator control, which improves overall productivity.



COUPLERS

Cat quick couplers allow you to change between tools in minutes, making the machine capable of doing a variety of money-making tasks.



ATTACHMENT TRACKING MADE EASY

The Cat PL161 attachment locator is a Bluetooth device that makes finding grapples, buckets, and other gear quick and easy. The excavator's onboard Bluetooth reader will locate the device automatically.

TECHNICAL SPECIFICATIONS

See cat.com for complete specifications.

ENGINE		
Engine Model	Cat® C7.1 TTA	
Net Power – ISO 9249	222.5 kW	298 hp
Engine Power – ISO 14396	225.1 kW	302 hp
Bore	105 mm	4.13 in
Stroke	135 mm	5.31 in
Displacement	7.1 L	433.3 in³

- Meets U.S. EPA Tier 4 Final, EU Stage V emission standards.
- Advertised power is tested per the specified standard in effect at the time of manufacture.
- Net power advertised is the power available at the flywheel when the engine is equipped with fan, air intake system, exhaust system and alternator.
- Rated speed at 2,200 rpm
- Cat diesel engines are required to use ULSD (ultra-low sulfur diesel fuel with 15 ppm of sulfur or less) and are compatible* with ULSD blended with the following lower-carbon intensity fuels** up to:
 - 20% biodiesel FAME (fatty acid methyl ester)***
 - 100% renewable diesel, HVO (hydrotreated vegetable oil) and GTL (gas-to-liquid) fuels

Refer to guidelines for successful application. Please consult your Cat dealer or “Caterpillar Machine Fluids Recommendations” (SEBU6250) for details.

*While Caterpillar engines are compatible with these alternative fuels, some regions may not allow their use.

**Tailpipe greenhouse gas emissions from lower-carbon intensity fuels are essentially the same as traditional fuels.

***Engines with no aftertreatment devices are compatible with higher blends, up to 100% biodiesel (for use of blends higher than 20% biodiesel, consult your Cat dealer).

HYDRAULIC SYSTEM		
Main System – Maximum Flow	534 L/min (141 gal/min)	
Maximum Pressure – Equipment	35 000 kPa	5,076 psi
Maximum Pressure – Heavy Lift Mode	38 000 kPa	5,511 psi
Maximum Pressure – Travel	35 000 kPa	5,076 psi
Maximum Pressure – Swing	27 200 kPa	3,945 psi

DRIVE		
Maximum Travel Speed – Rabbit	4.4 km/h	2.8 mph
Maximum Travel Speed – Turtle	3.0 km/h	1.8 mph
Maximum Drawbar Pull	350 kN	78,638 lbf

SWING MECHANISM		
Swing Speed	7.4 r/min	
Maximum Swing Torque	154 kN-m	113,584 lb-ft

WEIGHTS		
Operating Weight – General Forestry	41 500 kg	91,490 lb
• 22" SEC Riser, High Wide undercarriage, 5.04 mt Counterweight, Reach Boom, R3.2 m (10'2") Reach stick, 700 mm (28") double grouser shoes, 1.76 m³ (2.30 yd³) HD bucket.		
Operating Weight – Log Loader, Under/Under	44 700 kg	98,550 lb
• 72" REC Riser, High Wide undercarriage, Log Loader boom, 4.05 m (13'3") Under/Under stick with live heel, 700 mm (28") double grouser shoes, no grapple.		

AIR CONDITIONING SYSTEM		
The air conditioning system on this machine contains the fluorinated greenhouse gas refrigerant R134a (Global Warming Potential = 1430). The system contains 2.1 (22" Riser CAB)/2.2 (48"/72" Riser CAB) kg of refrigerant, which as a CO ₂ equivalent of 3.003/3.146 metric tonnes.		

SERVICE REFILL CAPACITIES		
Fuel Tank	990 L	262 gal
Cooling System	38 L	10 gal
Engine Oil – With Filter	25 L	7 gal
Swing Drive – Each	13.5 L	4 gal
Final Drive – Each	9.5 L	3 gal
Hydraulic System – Including Tank	348 L	92 gal
Hydraulic Tank	185 L	49 gal
Diesel Exhaust Fluid (DEF) Tank	41 L	11 gal

WORKING RANGES		
Max Reach at Grapple Mount on Heel at Ground Level – Log Loader Under/Under	11 980 mm	39.3 ft
Max Reach at Stick Nose at Ground Level – General Forestry Road Builder	10 740 mm	35.3 ft

DIMENSIONS		
Length: General Forestry – Boom Stretched Out	14 060 mm	46.2 ft
Length: Log Loader – Boom Stretched Out	15 730 mm	51.6 ft
Track Gauge	2920 mm	9.6 ft
Shipping Height – Tilted Cab	3610 mm	11.9 ft
Track Length	5160 mm	16.9 ft
Track Length to Center of Rollers	4120 mm	13.5 ft
Tail Swing Radius	3650 mm	11.6 ft
Transport Width	3650 mm	12 ft
Counterweight Clearance	1510 mm	4.9 ft
Handrail Height	3520 mm	11.6 ft
Ground Clearance	770 mm	2.5 ft

SOUND PERFORMANCE	
FM558 GF – General Forestry Linkage	
ISO 6395:2008 (external)	102 dB(A)
ISO 6396:2008 (inside cab)	74 dB(A)
FM558 LL – Log Loader Linkage	
ISO 6395:2008 (external)	100 dB(A)
ISO 6396:2008 (inside cab)	74 dB(A)
<ul style="list-style-type: none">• When properly installed and maintained, the cab offered by Caterpillar, when tested with doors and windows closed according to ANSI/SAE J1166 OCT98, meets Occupational Safety and Health Administration (OSHA) and Mine Safety and Health Administration (MSHA) requirements for operator sound exposure limits in effect at time of manufacture.• Hearing protection may be needed when operating with an open operator station and cab (when not properly maintained or doors/ windows open) for extended periods or in a noisy environment.	

Detailed specifications can be found in the technical specifications document.

STANDARD AND OPTIONAL EQUIPMENT

Standard and optional equipment may vary. Consult your Cat® dealer for details.

BOOMS, STICKS, AND LINKAGES	STANDARD	OPTIONAL
6.15 m (20'2") Reach boom		•
6.8 m (22'4") Log Loader boom		•
3.2 m (10'6") Reach stick		•
4.05 m (13'3") Under/Under stick		•
4.05 m (13'3") Over/Under stick		•
4.35 m (14'3") Power Clam stick		•
CB2 family bucket linkage		•
CAB	STANDARD	OPTIONAL
ROPS Forestry cab with polycarbonate windows	•	
32 mm (1.25"), thick polycarbonate front window	•	
4-point harness seat belt	•	
Side entry with 559 mm (22") tilting riser		•
Rear entry with 1219 mm (48") tilting riser		•
Rear entry with 1829 mm (72") tilting riser		•
Heated and cooled seat with air-adjustable suspension	•	
Integrated joysticks	•	
Tilt-up left-side console (side-entry cab only)	•	
High-resolution touchscreen monitor	•	
Bluetooth® integrated radio (including USB, auxiliary port and microphone)	•	
12V DC outlets	•	
Keyless push-to-start engine control	•	
Automatic bi-level air conditioner	•	
LED dome and floor lights	•	
Windshield wiper and washer	•	
Behind seat storage	•	
CB radio mounts		•
Retractable sunshade	•	
Rear sunshade		•
Cat® Stick Steer		•
Auxiliary relay		•
CAT TECHNOLOGY	STANDARD	OPTIONAL
Cat Equipment Management:		
VisionLink™	• ¹	
Remote Flash	•	
Remote Troubleshoot	•	

ELECTRICAL SYSTEM	STANDARD	OPTIONAL
Maintenance-free 1,000 CCA batteries (×4)	•	
Centralized electrical disconnect switch	•	
LED chassis and left-side boom light – 1,800 lumen	•	
Premium Log Loader lighting package		•
Premium General Forestry lighting package		•
115-amp alternator	•	
24-volt electric starting	•	
Horn and travel alarm	•	
Pre-start monitoring system	•	
Tool control software	•	
Secondary engine shutoff switch	•	
ENGINE	STANDARD	OPTIONAL
Electric fuel priming pump	•	
Cold start package with block heaters		•
Three selectable modes: Power, Smart, Eco	•	
Automatic engine speed control	•	
Automatic engine idle shutdown	•	
Up to 4600 m (15,092 ft) altitude capability	•	
52° C (126° F) high-ambient cooling capacity	•	
–32° C (–25° F) cold start capability	•	
Hydraulic reverse fan	•	
Two-stage fuel filter system	•	
Double element air filter with integrated pre-cleaner	•	

(continued on next page)

¹Provides core telematics data to manage health, maintenance insights, and condition monitoring. Other plans available for more comprehensive data reporting. Subscription required. Consult your Cat dealer for details.

*Optional for GF; not available for LL

**Standard for LL; optional for GF

STANDARD AND OPTIONAL EQUIPMENT

Standard and optional equipment may vary. Consult your Cat® dealer for details.

HYDRAULIC SYSTEM	STANDARD	OPTIONAL
Boom and stick regeneration circuits	●	
Boom and stick drift reduction valve	●	
Electronic main control valve	●	
Automatic hydraulic oil warmup	●	
Automatic swing parking brake	●	
High performance hydraulic return filter	●	
Automatic two speed travel	●	
Bio hydraulic oil capability	●	
High torque swing drive	●	
Swing cushion valve	●	
Tool control software	●	
Medium pressure circuit		●
SAFETY AND SECURITY	STANDARD	OPTIONAL
Caterpillar One Key security system	●	
Lockable service doors	●	
Lockable external tool/storage box	●	
Lockable fuel cap and hydraulic tank	●	
Lockable disconnect switch	●	
Service platforms with anti-skid plate and countersunk bolts	●	
Right-hand rail and hand hold	●	
Signaling/warning horn	●	
Ground-level secondary engine shutoff switch	●	
Rearview camera	●	
Right-hand-sideview camera		●
Inspection lighting		●

SERVICE AND MAINTENANCE	STANDARD	OPTIONAL
Side entry to service platforms	●	
Grouped location for engine oil and fuel filters	●	
S-O-S SM ports	●	
Integrated vehicle health management system	●	
UNDERCARRIAGE AND STRUCTURES	STANDARD	OPTIONAL
High-Wide undercarriage	●	
216 mm (8.5") pitch Cat grease lubricated track chain with PPR3 positive pin retention	●	
Catwalks	●	
Tie down points	●	
5.0 mt (11,023 lb) counterweight fuel tank*		●
6.1 mt (13,448 lb) counterweight fuel tank**	●	
850 mm (33") triple grouser shoes		●
700 mm (28") single grouser shoes		●
700 mm (28") double grouser shoes		●
Heavy-duty track rollers and frames	●	
Heavy-duty travel motor guards	●	
Heavy-duty bottom guards	●	
Track guiding guards	●	
High drawbar final drives	●	
Heavy-duty recoil springs	●	
Heavy-duty hydraulic swivel	●	
Heavy-duty hydraulic swivel guard	●	

¹Provides core telematics data to manage health, maintenance insights, and condition monitoring. Other plans available for more comprehensive data reporting. Subscription required. Consult your Cat dealer for details.

*Optional for GF; not available for LL

**Standard for LL; optional for GF

For more complete information on Cat products, dealer services and industry solutions, visit us on the web at www.cat.com.

© 2025 Caterpillar. All Rights Reserved.

Materials and specifications are subject to change without notice. Featured machines in photos may include additional equipment. See your Cat dealer for available options.

CAT, CATERPILLAR, LET'S DO THE WORK, VisionLink, their respective logos, "Caterpillar Corporate Yellow," the "Power Edge" and Cat "Modern Hex" trade dress as well as corporate and product identity used herein, are trademarks of Caterpillar and may not be used without permission.
www.cat.com www.caterpillar.com

AEXQ4175-01 (12-2025)
Replaces AEXQ4175-00
Build Number: 07H
(Aus-NZ, N Am)

