

326

HYDRAULIC EXCAVATOR



Net Power – ISO 9249
Operating Weight
Maximum Digging Depth

149.8 kW (201 hp)
25 600 kg (56,400 lb)
6820 mm (22.4 ft)



326

HYDRAULIC EXCAVATOR

The Cat® 326 Excavator brings premium performance with simple-to-use technologies to boost your operator efficiencies. Combine these features with an ergonomic cab, longer maintenance intervals, and a power system that reduces fuel and you have a low-cost-per-unit-of-production excavator that's perfect for medium to heavy-duty applications. Not all features are available in all regions. Consult your Cat dealer for specific configurations available in your region.



LOW MAINTENANCE COSTS

With extended and more synchronized maintenance intervals, you get more done at a lower cost compared to the previous model.

LOW CONSUMPTION

Three power modes and automatic engine speed helps minimize fuel use and increase engine efficiency.

HIGH OPERATING EFFICIENCY

Offering standard factory-equipped technology to help improve operation output, including Cat Grade with 2D, Grade with Assist and Payload.

LATEST FEATURES



Machine Setup Simplification

- At the touch of fingertips and navigating user-friendly icons, the latest operator oriented User Interface (UI) maximizes uptime and gets crews to work without delay. From re-ordering work tool lists to creating new work tool combinations as needed, operators can quickly set up machines and easily access information.
- The interface allows operators to maintain accuracy and makes the most of every second of their shift. Adding the ability to input couplers and attachments into the system makes setting up work tool combinations highly efficient by significantly reducing calibration time. It also eliminates the need to measure up again when changing Cat work tool attachments and makes it manageable for a single person to check and adjust for bucket wear.

Cat® Grade 3D Ready

- The Cat Grade 3D Ready option includes all the hardware required for the Grade with 3D system, installed and tested from the factory. This option provides an easier upgrade path for customers who want to add Grade with 3D after their initial purchase. To activate, contact your Cat Dealer to purchase the required 3D software licenses. Licenses can be installed remotely or manually loaded onto the machine.

Cat Payload and Advanced Payload*

- Cat Payload provides operators with on-the-go weighing to help them hit load targets and avoid overloading, underloading, or misloading materials. Advanced Payload is a system upgrade that offers expanded features and capabilities, including custom tags, daily totals, and electronic ticketing. Combine Payload with VisionLink® Productivity** to analyze jobsites and individual assets for remote management of production targets and key metrics.

**Payload technologies are not legal for trade.*

***VisionLink subscription required.*

*Not all features are available in all regions. Please check with your local Cat dealer for specific offering availability in your area.
Build Number: 07H*

PERFORMANCE AND PRODUCTIVITY



- Help reduce fuel consumption with no productivity loss while using Smart mode.
- Make working on slopes easier with improved swing torque over the previous model.
- Standard Cat® technologies help reduce operator fatigue and maintenance costs, increasing operating efficiency.
- C7.1 engine that meets emission standards. An aftertreatment system that requires no maintenance or downtime.
- The advanced hydraulic system provides the optimum balance of power and efficiency while giving you the control you need for precise digging requirements.
- Match the excavator to the job with power modes; let Smart mode automatically match engine and hydraulic power to digging conditions.
- Advansys™ bucket tips increase penetration and improve cycle times. Tip changes can be done quickly with a simple lug wrench instead of a hammer or special tool, improving safety and uptime.
- Auxiliary hydraulic options give you the versatility to use a wide range of Cat attachments.
- Available SmartBoom™ lets the boom freely travel up and down without using any pump flow so operators can focus on stick and bucket work. The benefits are reduced operator stress and reduced fuel consumption (not available in all regions – consult your local dealer on availability).
- Don't let the temperature stop you from working. The excavator has a standard high-ambient temperature capability of 52° C (125° F) with de-rate and cold start capability of -18° C (0° F). An optional -32° C (-25° F) cold start package is available.

TECHNOLOGY THAT GETS WORK DONE

- The latest operator oriented User Interface (UI) has been designed to maximize uptime by allowing operators to easily re-order work tool lists and quickly create new work tool combinations. It also eliminates the need to measure up again when changing Cat® work tool attachments and makes it manageable for a single person to check and adjust for bucket wear.
- Cat® Grade with 2D for excavators is an indicate system that helps operators reach grade faster.* Select your target depth and slope and watch the Grade with 2D system use on-board processors and sensors to provide real-time guidance on the distance to grade.
- Cat® Grade with 3D for excavators helps operators grade more quickly, accurately, and efficiently, improving productivity.* It incorporates Global Navigation Satellite System (GNSS) technology and Real Time Kinematic (RTK) positioning guidance to streamline the grading process for complex designs commonly encountered on large infrastructure and commercial projects. This system allows operators to work confidently, eliminating guesswork while cutting and filling to precise specifications.
- The Cat Grade 3D Ready option includes all the hardware required for the Grade with 3D system, installed and tested from the factory. Activation requires the purchase of additional 3D software licenses.
- All Cat Grade systems are compatible with radios and base stations from Trimble, Topcon, and Leica. Already invested in a grade infrastructure? You can install grade systems from Trimble, Topcon, and Leica onto the machine.
- Standard Grade Assist helps you stay on grade – simply and effortlessly – with single-lever digging.
- Keep the tracks on ground in lifting and hard digging with Boom Assist.
- Set your desired bucket angle and let Bucket Assist automatically maintain the angle in sloping, leveling, fine grading, and trenching applications.
- Automatically stop excavator swing at operator-defined set points in truck loading and trenching applications with Swing Assist, which will help you use less effort and consume less fuel.
- Cat Payload helps you achieve precise load targets to improve your operating efficiency. Pick up a load of material – with a bucket and thumb combination or grapple and clamshell attachments – and get a real-time weight estimate without swinging.
- Advanced Payload is a system upgrade that offers expanded features and capabilities, including custom tags, daily totals, and electronic ticketing.
- Combine Payload with VisionLink® and remotely manage your production targets.
- Cat® Operator Coaching allows operators of all experience levels to improve their efficiency and productivity. With tips and data at their fingertips, operators can track and improve their productivity through everyday work on the jobsite and prevent unnecessary machine wear and tear.

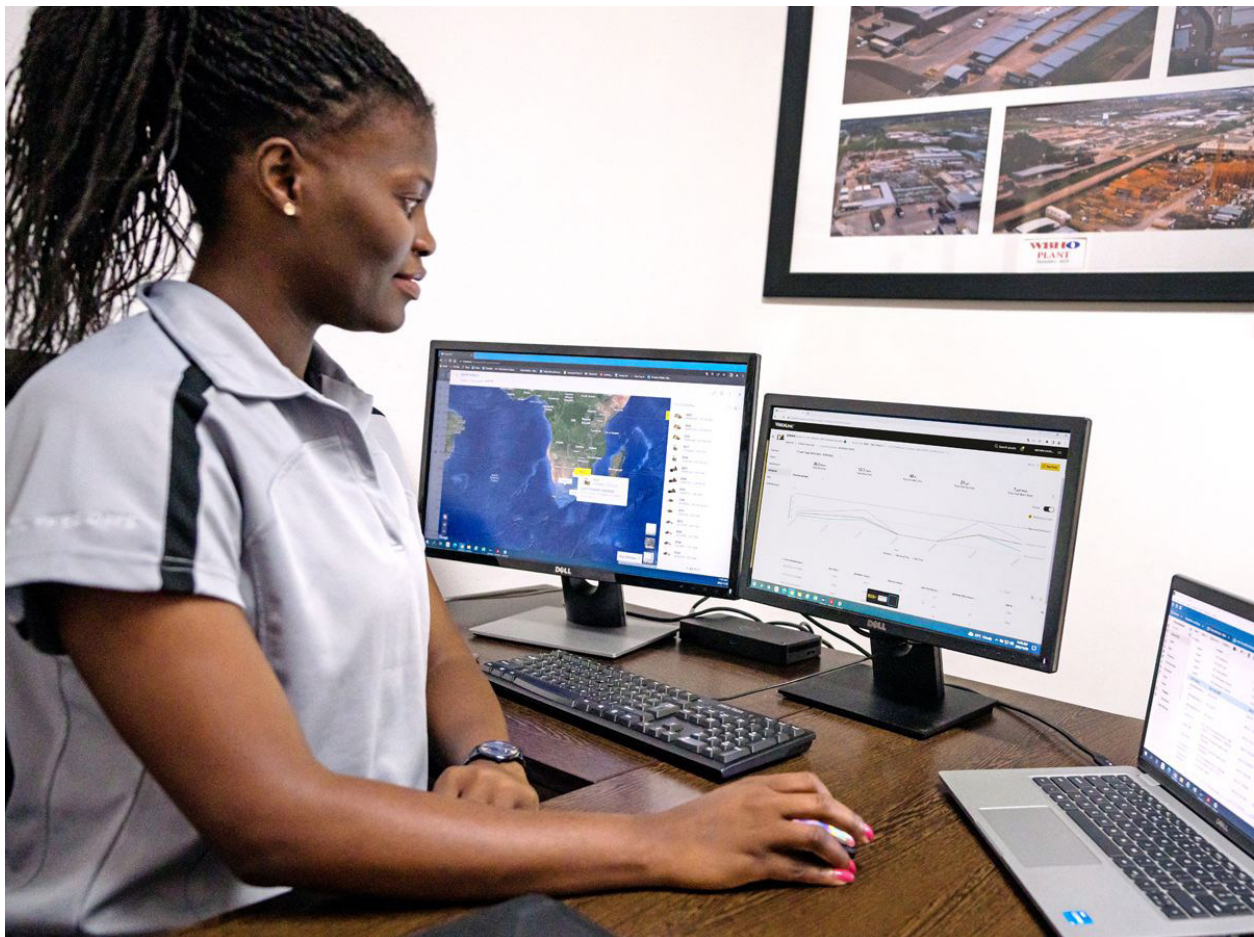
**Compared with traditional grading methods.
Availability may vary by region, consult your Cat Dealer for more details.*



TAKE THE GUESSWORK OUT OF MANAGING YOUR EQUIPMENT

- VisionLink provides actionable data insights for all assets – regardless of fleet size or equipment manufacturer.* Review equipment data from your desktop or mobile device to maximize uptime and optimize assets. Dashboards provide information such as hours, miles, location, idle time, and fuel utilization. Make informed decisions that lower costs, simplify maintenance, and improve safety and security on your jobsite.
- VisionLink Productivity gathers and summarizes machine telematics and jobsite data from all your equipment – regardless of the manufacturer.* View actionable information such as idle time, fuel burn, location, payload, load counts, total cycles, and more to improve machine efficiency, productivity, and utilization. Access data anywhere via a mobile, tablet, or desktop device – on or off the jobsite.
- Cat® Inspect is a mobile application that allows you to easily perform digital preventative maintenance (PM) checks, inspections, and daily walkarounds. Inspections can easily be integrated with other Cat data systems like VisionLink so you can keep a close eye on your fleet.
- Remote Troubleshoot is a mobile application that allows your Cat dealer to perform diagnostic testing on your connected machine remotely to help ensure that issues are resolved quickly and with less downtime.
- Remote Flash is a mobile application that allows you to update onboard software without a technician being present, allowing you to initiate software updates when convenient, increasing your overall operating efficiency.
- The Cat PL161 attachment locator allows you to track attachments across all worksites, reduce the number of lost attachments, and plan for attachment maintenance and replacement. The work tool recognition feature automatically adjusts machine settings based on the selected tool.

**Data field availability can vary by equipment manufacturer.*



WORK IN COMFORT

- Choose between Comfort, Deluxe and Premium cabs – all with automatic climate control (consult your local dealer on availability in your region).
- The Comfort cab is equipped with a mechanical suspension seat. The Deluxe seat is heated and air adjustable. The Premium seat is heated and cooled and adjusts automatically.
- The tip-up left console makes getting in and out of the seat easy.
- Advanced viscous mounts reduce cab vibration.
- Control the excavator comfortably with easy-to-reach controls all located in front of you.
- Stow your gear with plenty of in-cab storage beneath and behind the seat and in the consoles. A cup holder, document holder, bottle holder, and coat hook are also provided.
- Use the standard radio's USB ports and Bluetooth® technology to connect personal devices and make hands-free calls.



SIMPLE TO OPERATE



- Start the engine with a push button or the unique Operator ID function.
- Program your power mode and joystick preferences using Operator ID; the excavator will remember what you set each time you go to work.
- Make moving the excavator much easier with optional Cat Stick Steer. Simply push a button and use one hand to travel and turn instead of both hands or feet on levers or pedals.
- Tiltrotator attachments – ours or other brands – work seamlessly with Cat 2D Grade, Assist, Payload, and E-Fence. With no additional hardware required, all you have to do is simply select “Third Party Tiltrotator System Installation” in the monitor, do the calibration, and get to work.
- Make operating easier with the touch of a joystick button. Additional auxiliary relays allow you to power on or turn off a CB radio, beacon light, and even a dust suppression watering system without taking your hands off the joysticks.
- Navigate quickly on the standard high-resolution 203 mm (8 in) touchscreen monitor, or with the optional 254 mm (10 in) touchscreen monitor (available on the Deluxe and Premium cabs only), or with the aid of the jog dial control.
- Not sure how a function works or how to maintain the excavator? Always have the operator’s manual at your fingertips in the touchscreen monitor.
- Use the in-monitor QR code to learn about machine and technology features through a full suite of “how-to” videos.
- Find the tool you need – even if it’s hidden beneath overgrowth or debris. The excavator’s onboard Bluetooth reader can locate any work tool equipped with Cat asset tracking devices up to a range of 60 m (200 ft).
- Auto Dig Boost increases power by up to 8% for better bucket penetration, shorter cycle times, and greater payloads.*
- Make moving the excavator much easier with Cat Stick Steer. Simply push a button and use one hand to travel and turn instead of both hands or feet on levers or pedals.

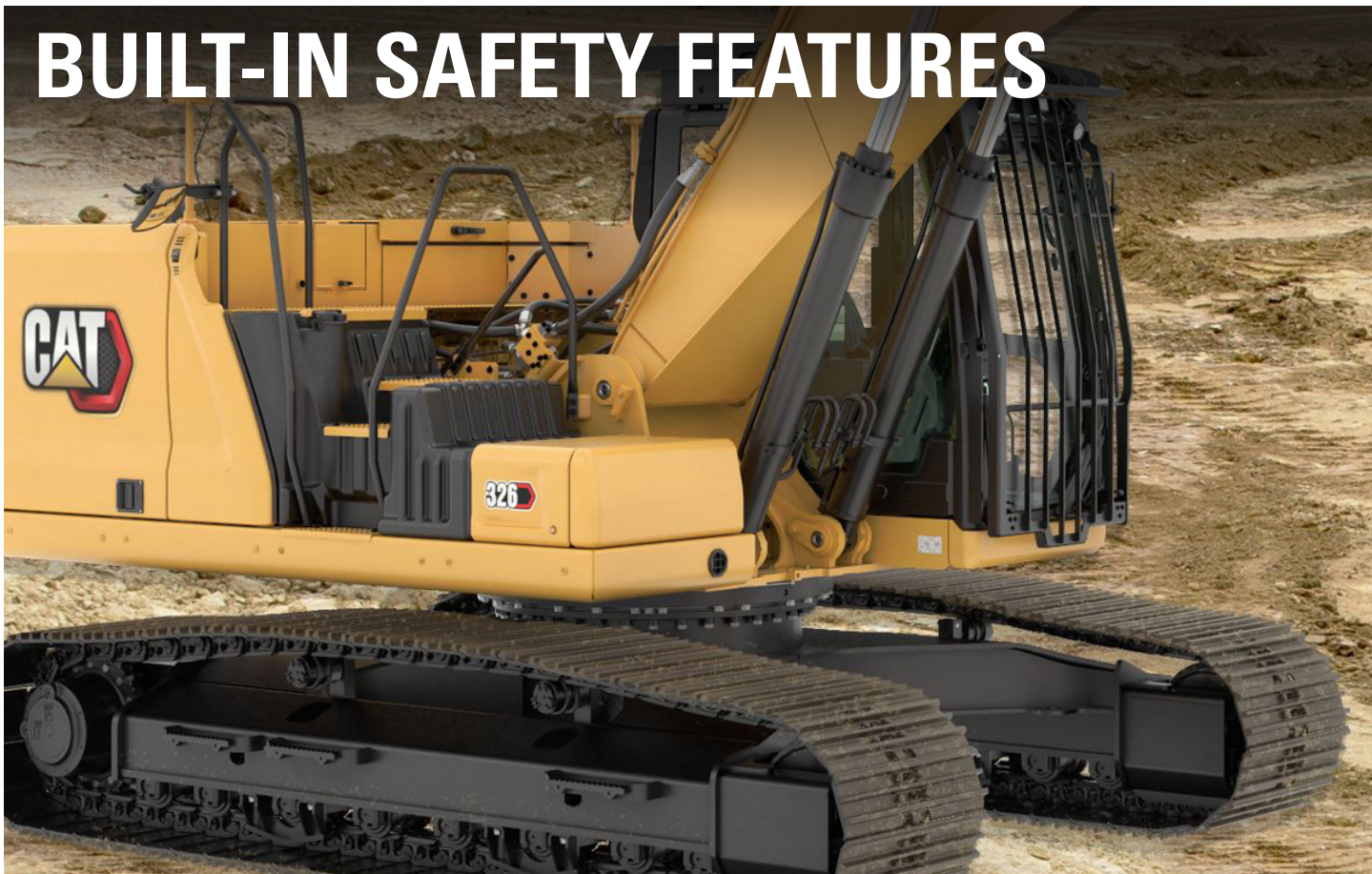
**Auto Dig Boost calculations are based on 380 bar (boost pressure) divided by 350 bar (standard pressure). Does not apply to long reach excavators.*

LOWER MAINTENANCE COSTS

- Expect lower maintenance costs compared to the 326F/326D2.
- Boost productivity with proactive service reminders. The Integrated vehicle health management system alerts the operator with step-by-step service guidance along with parts needed so you don't experience any unnecessary downtime.
- Do all daily maintenance at ground level.
- Check engine oil level quickly and safely with the ground-level engine oil dipstick; fill and check engine oil on top of the machine with a conveniently located second dipstick.
- Track your excavator's filter life and maintenance intervals via the in-cab monitor.
- No required maintenance on the Cat Clean Emissions Module.
- Using Cat genuine oil and filters and doing your typical Scheduled Oil Sampling (S-O-SSM) monitoring will extend the current service interval to 1,000 hours, giving you greater uptime to do more work.
- The advanced air intake filter with pre-cleaner has a high dust-holding capacity.
- The latest hydraulic oil filter provides high-quality filtration performance and features anti-drain valves to keep oil clean when the filter is replaced, and the 3,000-hour extended replacement interval offers efficiency and convenience.
- High-efficiency cooling fans run only when needed; you can program intervals so they automatically reverse to keep cores clean without interrupting your work.
- S-O-S ports are on ground level, simplifying maintenance and allowing for quick, easy extraction of fluid samples for analysis.



BUILT-IN SAFETY FEATURES



- Cat Lift Assist helps avoid machine tipping. With visual and auditory alerts, operators will know if their load is within the excavator's safe working range limits.
- Access 100% of daily maintenance points from ground level – no need for you to climb on top of the excavator.
- The standard Rollover Protective Structure (ROPS) cab meets ISO 12117-2:2008 requirements.
- Optional Cat Detect – People Detection helps protect the most valuable asset on any jobsite – people. The system uses smart cameras with depth sensors to provide the operator with visual and auditory alerts so he or she can take immediate action when a person is too close to the excavator.
- Enjoy great visibility into the trench, in each swing direction, and behind you with the help of smaller cab pillars, larger windows, and a flat engine hood design.
- Optional Cat Command remote control enables equipment operators to work safely outside the machine when working in hazardous environments. Command offers the choice of handheld Consoles* (line-of-sight) or long-distance virtual Stations (non-line-of-sight). Deep integration with machine systems enables efficiency and productivity by maintaining the use of in-cab technology* features (Grade, Payload, Assist, etc.).
- The standard hydraulic lockout lever isolates all hydraulic and travel functions in the lowered position.
- Ground-level shut-off switch stops all fuel to the engine when activated and shuts down the machine.
- 2D E-Fence prevents the excavator from moving outside of operator-defined set points; the system works with thumb and bucket combinations along with hammer, grapple, and clamshell attachments.
- A rearview camera and a right-side-view camera are available. Upgrade to 360° visibility and you'll easily visualize objects and personnel around the excavator in a single view.
- Right service platform design provides easy, safe, and quick access to upper service platform; the service platform steps use anti-skid punch plate to prevent slipping.
- Optional boom and stick lowering check valves prevent reverse flow, keeping your front linkage securely in place should the hydraulic system unexpectedly lose power.
- Brightly colored seatbelts allow easy recognition of properly utilized safety restraints.
- Make service work easier with optional inspection lighting. With the flip of a switch, lights will illuminate the engine, pump, battery, and radiator compartments to enhance visibility.
- Enhance jobsite safety. Add a swing alarm to alert people when you're rotating from trench to stockpile and back again.

**Operator assist features for the Command Console are not available in Europe, Australia, and New Zealand.*

- The Cat® C7.1 engine meets U.S. EPA Tier 4 Final, EU Stage V, and Japan 2014 emission standards.
- The 326 emits lower CO₂ emissions compared to the previous 326F.
- Cat diesel engines are required to use ULSD (ultra-low sulfur diesel fuel with 15 ppm of sulfur or less) or ULSD blended with the following lower-carbon intensity fuels** up to: 20% biodiesel FAME (fatty acid methyl ester)* or 100% renewable diesel, HVO (hydrogenated vegetable oil) and GTL (gas-to-liquid) fuels. Refer to guidelines for successful application. Please consult your Cat dealer or “Caterpillar Machine Fluids Recommendations” (SEBU6250) for details.
- Cat Grade technologies combine advanced guidance with optional automated machine control helping you reach grading targets while reducing fuel burn and greenhouse gas emissions by improving efficiency, jobsite productivity, and accuracy.
- Auto Engine Speed Control reduces unnecessary fuel burn and greenhouse gas emissions by allowing the engine to automatically go into idle mode when the machine is not working.
- Cat Payload for excavators provides on-the-go material weighing which helps reduce fuel burn by improving loading efficiency, jobsite productivity, and eliminating trips to the scale.
- Extended maintenance intervals not only reduce downtime but decrease the amount of fluid and filters that are replaced over the life of the machine.
- VisionLink displays the CO₂ emissions for monitored assets, calculated by fuel type for the Runtime Fuel Burned each day in a selected date range.
- Remote Flash minimizes downtime and maintenance time while keeping your asset running with maximum efficiency. Alerts for machine updates are sent virtually from your Cat dealer and updates can be deployed without a dealer technician needing to be onsite.

**Engines with no aftertreatment devices can use higher blends, up to 100% biodiesel (for use of blends higher than 20% biodiesel, consult your Cat dealer).*

***Tailpipe greenhouse gas emissions from lower-carbon intensity fuels are essentially the same as traditional fuels.*

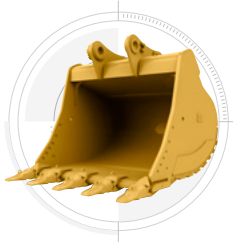


INCREASE YOUR PRODUCTIVITY AND PROFIT

WITH CAT ATTACHMENTS

You can easily expand the performance of your machine by utilizing any of the variety of Cat attachments. Each Cat attachment is designed to fit the weight and horsepower of Cat excavators for improved performance, safety, and stability.

BUCKETS



GRAPPLES



SECONDARY PULVERIZERS



TILTROTATOR



VIBRATORY PLATE COMPACTORS



HYDRAULIC HAMMERS



ATTACHMENT TRACKING MADE EASY

The Cat PL161 attachment locator is a Bluetooth device designed to let users know where their attachments are across all worksites, reduce the number of lost attachments, and plan for attachment maintenance and replacement.

Save more time and energy with the available work tool recognition feature. A simple shake of the attached tool confirms its identity and ensures all the attachment settings are correct so you can work quickly and efficiently.

The PL161 integrates easily into VisionLink for full fleet management of machines and attachments from one smartphone or tablet dashboard to view location and tracking details.

Automated attachment settings must be enabled within each machine configuration. Consult your Cat dealer for details.

DO HARD-TO-REACH WORK

With 360° rotation and 40° side-to-side tilting action, a Cat tiltrotator will help you get complex work done faster. A new system upgrade from the factory allows the tool to work with Cat 2D Grade, Assist, Payload, and E-Fence. It includes factory-fit joysticks, but uses the standard cab monitor to display the tool and engage its SecureLock™ so you don't need to spend money on an extra monitor. It also works seamlessly with other brands with no additional hardware required. All you have to do is simply select "Third Party Tiltrotator System Installation" in the monitor, do the calibration, and get to work.

PREVENT HAMMER WEAR AND TEAR

Protect your hammer tool from overheating and rapid wear. Auto hammer stop warns you after 15 seconds of continuous firing and then automatically shuts it off after 30 seconds – all to extend the tool's service life.

TECHNICAL SPECIFICATIONS

Engine

Net Power – ISO 9249	149.8 kW	201 hp
Net Power – ISO 9249 (DIN)	204 hp (metric)	
Engine Model	Cat C7.1	
Engine Power – ISO 14396	151 kW	202 hp
Engine Power – ISO 14396 (DIN)	205 hp (metric)	
Bore	105 mm	4 in
Stroke	135 mm	5 in
Displacement	7.01 L	428 in ³
Biodiesel Capability	Up to B20 ¹	
Emissions	Meets U.S. EPA Tier 4 Final, EU Stage V, and Japan 2014 emission standards.	

Net power advertised is the power available at the flywheel when the engine is equipped with fan, air intake system, exhaust system and alternator with engine speed at 2,000 rpm. Advertised power is tested per the specified standard in effect at the time of manufacture.

¹Cat diesel engines are required to use ULSD (ultra-low sulfur diesel fuel with 15 ppm of sulfur or less) or ULSD blended with the following lower-carbon intensity fuels** up to: 20% biodiesel FAME (fatty acid methyl ester)* or 100% renewable diesel, HVO (hydrotreated vegetable oil) and GTL (gas-to-liquid) fuels. Refer to guidelines for successful application. Please consult your Cat dealer or “Caterpillar Machine Fluids Recommendations” (SEBU6250) for details.

*Engines with no aftertreatment devices can use higher blends, up to 100% biodiesel (for use of blends higher than 20% biodiesel, consult your Cat dealer).

**Tailpipe greenhouse gas emissions from lower-carbon intensity fuels are essentially the same as traditional fuels.

Hydraulic System

Main System – Maximum Flow	481 L/min (127 gal/min)	
Maximum Pressure – Equipment	35 000 kPa	5,075 psi
Maximum Pressure – Equipment – Lift Mode	38 000 kPa	5,510 psi
Maximum Pressure – Travel	35 000 kPa	5,075 psi
Maximum Pressure – Swing	28 400 kPa	4,118 psi

Swing Mechanism

Swing Speed*	9.9 r/min	
Maximum Swing Torque	106 kN·m	78,180 lbf·ft

*For CE-marked machine default value may be set lower.

Weights

Operating Weight	25 600 kg	56,400 lb
------------------	-----------	-----------

Long undercarriage, Reach boom, R2.95 m (9'8") stick, 1.54 m³ (2.01 yd³) Heavy Duty (HD) bucket, 600 mm (24") triple grouser shoes and 4600 kg (10,140 lb) counterweight.

Service Refill Capacities

Fuel Tank Capacity	474 L	125.2 gal
Cooling System	25 L	6.6 gal
Engine Oil	25 L	6.6 gal
Swing Drive	11.5 L	3 gal
Final Drive – Each	4.5 L	1.2 gal
Hydraulic System – Including Tank	310 L	81.9 gal
Hydraulic Tank	147 L	38.8 gal
Diesel Exhaust Fluid (DEF) Tank	41 L	10.8 gal

Dimensions

Boom	Reach 5.9 m (19'4")	
Stick	Reach 2.95 m (9'8")	
Bucket	HD 1.54 m ³ (2.01 yd ³)	
Shipping Height – Top of Cab	3000 mm	9.8 ft
Handrail Height	3000 mm	9.8 ft
Shipping Length	10 060 mm	33 ft
Tail Swing Radius	3000 mm	9.8 ft
Counterweight Clearance	1060 mm	3.5 ft
Ground Clearance	440 mm	1.4 ft
Track Length	4640 mm	15.2 ft
Length to Center of Rollers	3830 mm	12.6 ft
Track Gauge	2590 mm	8.5 ft
Transport Width	3190 mm	10.5 ft

Working Ranges & Forces

Boom	Reach 5.9 m (19'4")	
Stick	Reach 2.95 m (9'8")	
Bucket	HD 1.54 m ³ (2.01 yd ³)	
Maximum Digging Depth	6820 mm	22.4 ft
Maximum Reach at Ground Level	10 120 mm	33.2 ft
Maximum Cutting Height	9680 mm	31.8 ft
Maximum Loading Height	6610 mm	21.7 ft
Minimum Loading Height	2390 mm	7.8 ft
Maximum Depth Cut for 2440 mm (8 ft) Level Bottom	6650 mm	21.8 ft
Maximum Vertical Wall Digging Depth	5340 mm	17.5 ft
Bucket Digging Force – ISO	166 kN	37,320 lbf
Stick Digging Force – ISO	121 kN	27,200 lbf

Air Conditioning System

The air conditioning system on this machine contains the fluorinated greenhouse gas refrigerant R134a (Global Warming Potential = 1430). The system contains 0.85 kg of refrigerant which has a CO₂ equivalent of 1.216 metric tonnes.

STANDARD & OPTIONAL EQUIPMENT

NOTE: Standard and optional equipment may vary. Consult your Cat dealer for details.

	Standard	Optional
UNDERCARRIAGE AND STRUCTURES		
Long undercarriage	✓	
Tie-down points on base frame	✓	
4600 kg (10,141 lb) counterweight	✓	
Long narrow undercarriage		✓
600 mm (24") triple grouser shoes		✓
600 mm (24") double grouser shoes		✓
600 mm (24") single grouser shoes		✓
700 mm (28") triple grouser shoes		✓
790 mm (31") triple grouser shoes		✓
900 mm (35") triple grouser track shoes		✓
7400 kg (16,300 lb) counterweight for Super Long Reach		✓
BOOMS AND STICKS		
5.9 m (19'4") Reach boom		✓
5.9 m (19'4") HD Reach boom		✓
2.8 m + 3.3 m (9'2" + 10'10") Variable Angle boom		✓
10.2 m (33'6") Super Long Reach boom		✓
3.6 m (11'10") Reach stick		✓
2.95 m (9'8") Reach stick		✓
2.95 m (9'8") HD Reach stick		✓
2.5 m (8'2") Reach stick		✓
7.85 m (25'9") Super Long Reach stick		✓
CAB		
ROPS	✓	
Operator Protective Guards (OPG)		✓
Mechanical-suspension seat (Comfort only)		✓
Air-adjustable seat with heat (Deluxe only)		✓
Auto adjustable seat with heat and air ventilation (Premium only)		✓
High-resolution 203 mm (8 in) LCD touchscreen monitor		✓
High-resolution 254 mm (10 in) LCD touchscreen monitor		✓
Cat Stick Steer		✓
Auxiliary relay		✓

	Standard	Optional
CAT TECHNOLOGIES		
VisionLink®	✓	
Remote Flash	✓	
Remote Troubleshoot	✓	
Work tool recognition and tracking (PL161)	✓	
Cat Grade with 2D	✓	
Cat Assist	✓	
Cat Payload	✓	
VisionLink Productivity		✓
Operator Coaching		✓
Cat Grade with 2D with Attachment Ready Option (ARO)		✓
Cat Grade with 3D (single or dual GNSS)		✓
Cat Grade 3D Ready		✓
Cat Grade Connectivity		✓
Cat Advanced Payload		✓
Cat Tiltrotator (TRS) integration		✓
ENGINE		
Cat C7.1 single turbo diesel engine	✓	
Three selectable power modes	✓	
One-touch low idle with automatic engine speed control	✓	
Auto engine idle shutdown	✓	
52° C (125° F) high-ambient cooling capacity with de-rate	✓	
-18° C (0° F) cold start capability	✓	
Double element air filter with integrated pre-cleaner	✓	
Reversing electric cooling fans	✓	
-32° C (-25° F) cold start capability		✓

(continued on next page)

STANDARD & OPTIONAL EQUIPMENT *(continued)*

NOTE: Standard and optional equipment may vary. Consult your Cat dealer for details.

	Standard	Optional
ELECTRICAL SYSTEM		
Maintenance free batteries	✓	
Programmable time-delay LED working lights	✓	
LED chassis light, left-hand/right-hand boom lights, cab lights	✓	
360° lighting		✓
HYDRAULIC SYSTEM		
Boom and stick regeneration circuits	✓	
Auto hydraulic warm up	✓	
Auto two-speed travel	✓	
Boom and stick drift reduction valve	✓	
Auto dig boost	✓	
Auto heavy lift	✓	
Tandem-type electronic main pump	✓	
Element-type main hydraulic filter	✓	
SmartBoom™ (Europe only)		✓
Hydraulic efficiency monitoring		✓
SERVICE AND MAINTENANCE		
S-O-S ports	✓	
Ground-level and platform-level engine oil dipsticks	✓	
Integrated vehicle health management system	✓	
Electric refueling pump with auto shutoff		✓

	Standard	Optional
SAFETY AND SECURITY		
2D E-Fence	✓	
Auto hammer stop	✓	
Rearview camera	✓	
Right-side-view camera	✓	
Lift assist	✓	
Ground-level engine shutoff switch	✓	
Lockable disconnect switch	✓	
Right-hand handrail and hand hold	✓	
Signaling/warning horn	✓	
Cat Command (remote control)		✓
360° visibility		✓
Swing alarm		✓
Inspection lighting		✓



オフロード法2014年
基準適合



国土交通省
超低騒音型建設機械

For more complete information on Cat products, dealer services and industry solutions, visit us on the web at www.cat.com.

© 2024 Caterpillar. All Rights Reserved.

VisionLink is a trademark of Caterpillar Inc., registered in the United States and in other countries.

Materials and specifications are subject to change without notice. Featured machines in photos may include additional equipment. See your Cat dealer for available options.

CAT, CATERPILLAR, LET'S DO THE WORK, their respective logos, SmartBoom, S-O-S, Product Link, "Caterpillar Corporate Yellow," the "Power Edge" and Cat "Modern Hex" trade dress as well as corporate and product identity used herein, are trademarks of Caterpillar and may not be used without permission. www.cat.com www.caterpillar.com

AEXQ2774-05
Replaces AEXQ2774-04
Build Number: 07H
(Aus-NZ, Chile, Colombia,
Europe, Japan, N Am, Türkiye)

