



340

Hydraulic Excavator

Technical Specifications

Configurations and features may vary by region. Please consult your Cat® dealer for availability in your area.

Table of Contents

| | |
|----------------------------------------------------|-----------|
| Specifications | 2 |
| Engine | 2 |
| Swing Mechanism | 2 |
| Weights | 2 |
| Track | 2 |
| Drive | 2 |
| Hydraulic System | 2 |
| Service Refill Capacities | 3 |
| Standards | 3 |
| Sound Performance | 3 |
| Air Conditioning System | 3 |
| Operating Weights and Ground Pressures | 4 |
| Major Component Weights | 5 |
| Dimensions | 6 |
| Working Ranges and Forces | 8 |
| Heavy Duty (HD) Reach Boom Lift Capacities: | |
| R3.9DB(HD) Stick | 9 |
| R3.2DB(HD) Stick | 12 |
| R2.8DB(HD) Stick | 13 |
| Mass Boom Lift Capacities: | |
| M2.55TB Stick | 15 |
| Bucket Specifications and Compatibility: | |
| Africa, Middle East and Eurasia | 17 |
| Indonesia | 20 |
| Attachments Offering Guide: | |
| Africa, Middle East | 22 |
| Eurasia | 28 |
| Indonesia | 34 |
| Standard and Optional Equipment | 35 |
| Dealer Installed Kits and Attachments | 37 |
| Cab Options | 38 |
| 340 Environmental Declaration | 39 |

340 Hydraulic Excavator Specifications

Engine

| | | |
|-----------------|-----------------|---------------------|
| Engine Model | Cat® C9.3B | |
| Net Power | | |
| ISO 9249 | 258.3 kW | 346 hp |
| ISO 9249 (DIN) | 351 hp (metric) | |
| Engine Power | | |
| ISO 14396 | 259.0 kW | 347 hp |
| ISO 14396 (DIN) | 352 hp (metric) | |
| Bore | 115 mm | 5 in |
| Stroke | 149 mm | 6 in |
| Displacement | 9.3 L | 568 in ³ |

- Meets U.S. EPA Tier 3, EU Stage IIIA equivalent, and China Nonroad Stage III emission standards.
- Recommended for use up to 4500 m (14,760 ft) altitude with engine power derate above 3000 m (9,840 ft).
- Advertised power is tested per the specified standard in effect at the time of manufacture.
- Net power is the power available at the flywheel when the engine is equipped with fan, air intake system, exhaust system, and alternator with engine speed at 1,900.
- Cat engines are compatible with diesel fuel blended with the following lower-carbon intensity fuels** up to:
 - ✓ 100% biodiesel FAME (fatty acid methyl ester)*
 - ✓ 100% renewable diesel, HVO (hydrogenated vegetable oil) and GTL (gas-to-liquid) fuels

Refer to guidelines for successful application. Please consult your Cat dealer or “Caterpillar Machine Fluids Recommendations” (SEBU6250) for details.

*B30, where mandated, can be used. For use of blends higher than 20% biodiesel, consult your Cat dealer.

**Tailpipe greenhouse gas emissions from lower-carbon intensity fuels are essentially the same as traditional fuels.

Swing Mechanism

| | | |
|----------------------|----------|----------------|
| Swing Speed* | 8.84 rpm | |
| Maximum Swing Torque | 143 kN·m | 105,214 lbf·ft |

* For CE-marked machine default value may be set lower.

Weights

| | | |
|----------------------------------------------------------------------------------------------------------------------------------------------------------------------------------------------------------------------------|-----------|-----------|
| Operating Weight | 36 800 kg | 81,200 lb |
| • Long Wide Undercarriage, Heavy Duty (HD) Reach Boom, HD R3.2DB (10'6") Stick, General Duty (GD) 2.5 m ³ (3.27 yd ³) Bucket, 600 mm (24") Triple Grouser Shoes, 7.56 mt (16,700 lb) Counterweight. | | |
| Operating Weight | 38 300 kg | 84,500 lb |
| • Long Wide Undercarriage, Mass Boom, M2.55TB (8'4") Stick, Severe Duty V-Edge (SDV) 2.78 m ³ (3.64 yd ³) Bucket, 600 mm (24") Triple Grouser Shoes, 7.56 mt (16,700 lb) Counterweight. | | |

Track

| | | |
|---------------------------------------|--------|-------|
| Optional Track Shoes Width | 600 mm | 24 in |
| Optional Track Shoes Width | 700 mm | 28 in |
| Optional Track Shoes Width | 800 mm | 31 in |
| Number of Shoes (each side) | 49 | |
| Number of Track Rollers (each side) | 8 | |
| Number of Carrier Rollers (each side) | 2 | |

Drive

| | | |
|----------------------|----------|------------|
| Maximum Gradeability | 35°/70% | |
| Maximum Travel Speed | 4.7 km/h | 2.9 mph |
| Maximum Drawbar Pull | 301.5 kN | 67,780 lbf |

Hydraulic System

| | | |
|------------------------------------------|---------------------------------|----------------------------------|
| Main System – Maximum Flow – Implement | 560 L/min (280 × 2 pumps) | 148 gal/min (74 × 2 pumps) |
| Maximum Pressure – Equipment – Implement | 35 000 kPa | 5,076 psi |
| Maximum Pressure – Equipment – Lift Mode | 38 000 kPa | 5,511 psi |
| Maximum Pressure – Travel | 35 000 kPa | 5,076 psi |
| Maximum Pressure – Swing | 29 400 kPa | 4,264 psi |
| Boom Cylinder – Bore | 150 mm | 6 in |
| Boom Cylinder – Stroke | 1440 mm | 57 in |
| Stick Cylinder – Bore | 170 mm | 7 in |
| Stick Cylinder – Stroke | 1738 mm | 68 in |
| DB Bucket Cylinder – Bore | 150 mm | 6 in |
| DB Bucket Cylinder – Stroke | 1151 mm | 45 in |
| TB Bucket Cylinder – Bore | 160 mm | 6 in |
| TB Bucket Cylinder – Stroke | 1356 mm | 53 in |

340 Hydraulic Excavator Specifications

Service Refill Capacities

| | | |
|--------------------------------------------|-------|-----------|
| Fuel Tank Capacity | 600 L | 158.5 gal |
| Cooling System | 40 L | 10.5 gal |
| Engine Oil (with filter) | 32 L | 8.5 gal |
| Swing Drive | 18 L | 4.8 gal |
| Final Drive (each) | 8 L | 2.1 gal |
| Hydraulic System (including tank) | 373 L | 98.5 gal |
| Hydraulic Tank (including suction pipe) | 161 L | 42.5 gal |

Standards

| | |
|----------------------------------------------------|-------------------------|
| Brakes | ISO 10265:2008 |
| Cab/Operator Protective Guards (OPG) (optional) | ISO 10262:1998 Level II |
| Cab/Rollover Protective Structure (ROPS) | ISO 12117-2:2008 |

Sound Performance

| | |
|----------------------------|-----------|
| ISO 6395:2008 (external) | 106 dB(A) |
| ISO 6396:2008 (inside cab) | 73 dB(A) |

- When properly installed and maintained, the cab offered by Caterpillar, when tested with doors and windows closed according to ANSI/SAE J1166 OCT98, meets OSHA and MSHA requirements for operator sound exposure limits in effect at time of manufacture.
- Hearing protection may be needed when operating with an open operator station and cab (when not properly maintained or doors/windows open) for extended periods or in a noisy environment.

Air Conditioning System

The air conditioning system on this machine contains the fluorinated greenhouse gas refrigerant R134a (Global Warming Potential = 1430). The system contains 1.00 kg of refrigerant which has a CO₂ equivalent of 1.430 metric tonnes.

340 Hydraulic Excavator Specifications

Operating Weights and Ground Pressures

| Base Machine Configurations | 600 mm (24") Triple Grouser Shoes | | 600 mm (24") Double Grouser Shoes | | 600 mm (24") Triple Grouser HD Shoes | |
|-------------------------------------------------------------------------------------------------|--------------------------------------|-----------------|--------------------------------------|-----------------|-----------------------------------------|-----------------|
| | Weight | Ground Pressure | Weight | Ground Pressure | Weight | Ground Pressure |
| | kg (lb) | kPa (psi) | kg (lb) | kPa (psi) | kg (lb) | kPa (psi) |
| Base Frame with HD Track Rollers and Carrier Rollers for Long Wide Undercarriage | | | | | | |
| 7.56 mt (16,700 lb) Counterweight + Long Wide Undercarriage Base Machine + HD Reach Boom | | | | | | |
| HD R3.9 m (12'10") DB Stick, 2.5 m ³ (3.27 yd ³) GD Bucket | 37 000 (81,500) | 68.9 (10.0) | 37 700 (83,200) | 70.3 (10.2) | 37 600 (83,000) | 70.1 (10.2) |
| HD R3.2 m (10'6") DB Stick, 2.5 m ³ (3.27 yd ³) GD Bucket | 36 800 (81,200) | 68.6 (9.9) | 37 600 (82,800) | 70.0 (10.2) | 37 500 (82,600) | 69.8 (10.1) |
| HD R2.8 m (9'2") DB Stick, 2.5 m ³ (3.27 yd ³) GD Bucket | 36 700 (80,900) | 68.4 (9.9) | 37 500 (82,600) | 69.8 (10.1) | 37 400 (82,400) | 69.6 (10.1) |
| 7.56 mt (16,700 lb) Counterweight + Long Wide Undercarriage Base Machine + Mass Boom | | | | | | |
| M2.55 m (8'4") TB Stick, 2.78 m ³ (3.64 yd ³) SDV Bucket | 38 300 (84,500) | 71.4 (10.4) | 39 100 (86,200) | 72.8 (10.6) | 39 000 (86,000) | 72.7 (10.5) |
| M2.55 m (8'4") TB Stick, 3.0 m ³ (3.92 yd ³) GD Bucket | 38 000 (83,800) | 70.8 (10.3) | 38 800 (85,400) | 72.2 (10.5) | 38 700 (85,200) | 72.0 (10.4) |

All operating weights include a 90% fuel tank with 75 kg (165 lb) operator.

| Base Machine Configurations | 700 mm (28") Triple Grouser Shoes | | 800 mm (31") Triple Grouser Shoes | |
|-------------------------------------------------------------------------------------------------|--------------------------------------|-----------------|--------------------------------------|-----------------|
| | Weight | Ground Pressure | Weight | Ground Pressure |
| | kg (lb) | kPa (psi) | kg (lb) | kPa (psi) |
| Base Frame with HD Track Rollers and Carrier Rollers for Long Wide Undercarriage | | | | |
| 7.56 mt (16,700 lb) Counterweight + Long Wide Undercarriage Base Machine + HD Reach Boom | | | | |
| HD R3.9 m (12'10") DB Stick, 2.5 m ³ (3.27 yd ³) GD Bucket | 37 300 (82,300) | 59.6 (8.6) | 38 000 (83,800) | 53.1 (7.7) |
| HD R3.2 m (10'6") DB Stick, 2.5 m ³ (3.27 yd ³) GD Bucket | 37 200 (81,900) | 59.3 (8.6) | 37 800 (83,400) | 52.8 (7.7) |
| HD R2.8 m (9'2") DB Stick, 2.5 m ³ (3.27 yd ³) GD Bucket | 37 100 (81,700) | 59.2 (8.6) | 37 700 (83,100) | 52.7 (7.6) |
| 7.56 mt (16,700 lb) Counterweight + Long Wide Undercarriage Base Machine + Mass Boom | | | | |
| M2.55 m (8'4") TB Stick, 2.78 m ³ (3.64 yd ³) SDV Bucket | 38 700 (85,300) | 61.8 (9.0) | 39 300 (86,700) | 55.0 (8.0) |
| M2.55 m (8'4") TB Stick, 3.0 m ³ (3.92 yd ³) GD Bucket | 38 300 (84,500) | 61.2 (8.9) | 39 000 (86,000) | 54.5 (7.9) |

All operating weights include a 90% fuel tank with 75 kg (165 lb) operator.

340 Hydraulic Excavator Specifications

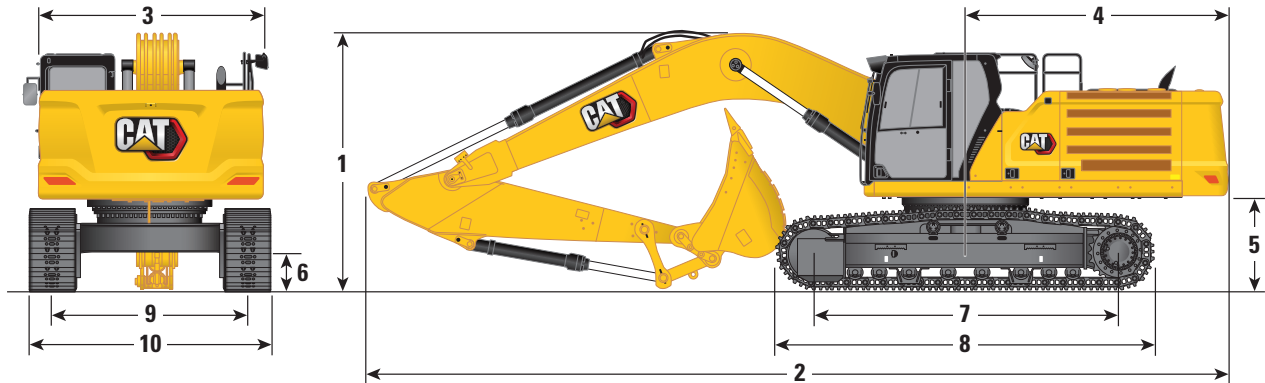
Major Component Weights

| | kg | lb |
|-------------------------------------------------------------------------------------------------------------------------------------------------------|--------|--------|
| Base Machine with 7.56 mt (16,700 lb) Counterweight, HD Swing Frame, Base Frame with HD Track Rollers and Carrier Rollers for Long Wide Undercarriage | 25 240 | 55,650 |
| Track Shoes: | | |
| 600 mm (24") Width, 11 mm (0.43") Thick, Triple Grouser Track Shoes | 4090 | 9,020 |
| 600 mm (24") Width, 15.5 mm (0.61") Thick, Double Grouser Track Shoes | 4850 | 10,700 |
| 600 mm (24") Width, 15.5 mm (0.61") Thick, HD Triple Grouser Track Shoes | 4750 | 10,470 |
| 700 mm (28") Width, 11 mm (0.43") Thick, Triple Grouser Track Shoes | 4450 | 9,800 |
| 800 mm (31") Width, 13 mm (0.51") Thick, Triple Grouser Track Shoes | 5100 | 11,230 |
| Two Boom Cylinders | 670 | 1,470 |
| Weight of 90% Fuel Tank and 75 kg (165 lb) Operator | 550 | 1,210 |
| Counterweight: | | |
| 7.56 mt (16,700 lb) Counterweight | 7560 | 16,670 |
| Swing Frame: | | |
| HD Swing Frame | 3260 | 7,180 |
| Undercarriage: | | |
| Base Frame with HD Track Rollers and Carrier Rollers | 8750 | 19,290 |
| Booms (including lines, pins, stick cylinder): | | |
| HD Reach Boom 6.5 m (21'4") | 3480 | 7,670 |
| Mass Boom 6.18 m (20'3") | 3500 | 7,710 |
| Sticks (including lines, pins, bucket cylinder, bucket linkage): | | |
| HD Reach Stick R2.8DB (9'2") | 1810 | 4,000 |
| HD Reach Stick R3.2DB (10'6") | 1920 | 4,220 |
| HD Reach Stick R3.9DB (12'10") | 2090 | 4,610 |
| Mass Stick M2.55TB (8'4") | 2120 | 4,680 |
| Buckets (without linkage): | | |
| 2.5 m ³ (3.27 yd ³) GD | 1540 | 3,380 |
| 2.78 m ³ (3.64 yd ³) SDV | 2840 | 6,270 |
| 3.0 m ³ (3.92 yd ³) GD | 2490 | 5,490 |
| Quick Coupler (QC): | | |
| Pin Grabber QC | 700 | 1,550 |

340 Hydraulic Excavator Specifications

Dimensions

All dimensions are approximate and may vary depending on bucket selection.



| Undercarriage Option | Long Wide Undercarriage | | | | | |
|---------------------------------------------------------|-----------------------------|----------------------|---------------------|----------------------|---------------------|----------------------|
| | Reach Boom 6.5 m (21'4") | | | | | |
| Boom Options | Reach Stick | | | | | |
| Stick Options | R3.9DB (12'10") | | R3.2DB (10'6") | | R2.8DB (9'2") | |
| 1 Machine Height: | | | | | | |
| Cab Height | 3180 mm | 10'5" | 3180 mm | 10'5" | 3180 mm | 10'5" |
| OPG Height | 3330 mm | 10'11" | 3330 mm | 10'11" | 3330 mm | 10'11" |
| Guardrails/Handrails Height | 3180 mm | 10'5" | 3180 mm | 10'5" | 3180 mm | 10'5" |
| With Boom/Stick/Bucket Installed | 3660 mm | 12'0" | 3480 mm | 11'5" | 3650 mm | 12'0" |
| With Boom/Stick Installed | 3560 mm | 11'8" | 3330 mm | 10'11" | 3450 mm | 11'4" |
| With Boom Installed | 2880 mm | 9'5" | 2880 mm | 9'5" | 2880 mm | 9'5" |
| With Boom/Stick/Bucket Installed (with auxiliary lines) | 3670 mm | 12'0" | 3530 mm | 11'7" | 3670 mm | 12'0" |
| With Boom/Stick Installed (with auxiliary lines) | 3620 mm | 11'11" | 3410 mm | 11'2" | 3500 mm | 11'6" |
| With Boom Installed (with auxiliary lines) | 2970 mm | 9'9" | 2970 mm | 9'9" | 2970 mm | 9'9" |
| 2 Machine Length: | | | | | | |
| With Boom/Stick/Bucket Installed | 11 180 mm | 36'8" | 11 160 mm | 36'7" | 11 200 mm | 36'9" |
| With Boom/Stick Installed | 11 170 mm | 36'8" | 11 120 mm | 36'6" | 11 170 mm | 36'8" |
| With Boom Installed | 9960 mm | 32'8" | 9960 mm | 32'8" | 9960 mm | 32'8" |
| With Boom/Stick/Bucket Installed (with auxiliary lines) | 11 180 mm | 36'8" | 11 160 mm | 36'7" | 11 200 mm | 36'9" |
| With Boom/Stick Installed (with auxiliary lines) | 11 170 mm | 36'8" | 11 120 mm | 36'6" | 11 170 mm | 36'8" |
| With Boom Installed (with auxiliary lines) | 10 010 mm | 32'10" | 10 010 mm | 32'10" | 10 010 mm | 32'10" |
| 3 Upperframe Width without Walkways | 2970 mm | 9'9" | 2970 mm | 9'9" | 2970 mm | 9'9" |
| 4 Tail Swing Radius | 3530 mm | 11'7" | 3530 mm | 11'7" | 3530 mm | 11'7" |
| 5 Counterweight Clearance | 1260 mm | 4'2" | 1260 mm | 4'2" | 1260 mm | 4'2" |
| 6 Ground Clearance | 510 mm | 1'8" | 510 mm | 1'8" | 510 mm | 1'8" |
| 7 Track Length – Length to Center of Rollers | 4040 mm | 13'3" | 4040 mm | 13'3" | 4040 mm | 13'3" |
| 8 Track Length | 5030 mm | 16'6" | 5030 mm | 16'6" | 5030 mm | 16'6" |
| 9 Track Gauge | 2740 mm | 9'0" | 2740 mm | 9'0" | 2740 mm | 9'0" |
| 10 Track Width/Undercarriage Width (with steps): | | | | | | |
| 600 mm (24") Shoes | 3340 mm | 10'11" | 3340 mm | 10'11" | 3340 mm | 10'11" |
| 700 mm (28") Shoes | 3440 mm | 11'3" | 3440 mm | 11'3" | 3440 mm | 11'3" |
| 800 mm (31") Shoes | 3540 mm | 11'7" | 3540 mm | 11'7" | 3540 mm | 11'7" |
| 850 mm (33") Shoes | 3590 mm | 11'9" | 3590 mm | 11'9" | 3590 mm | 11'9" |
| Bucket Type | GD | | GD | | GD | |
| Bucket Capacity | 2.50 m ³ | 3.27 yd ³ | 2.50 m ³ | 3.27 yd ³ | 2.50 m ³ | 3.27 yd ³ |
| Bucket Tip Radius | 1760 mm | 5.8 ft | 1760 mm | 5.8 ft | 1760 mm | 5.8 ft |

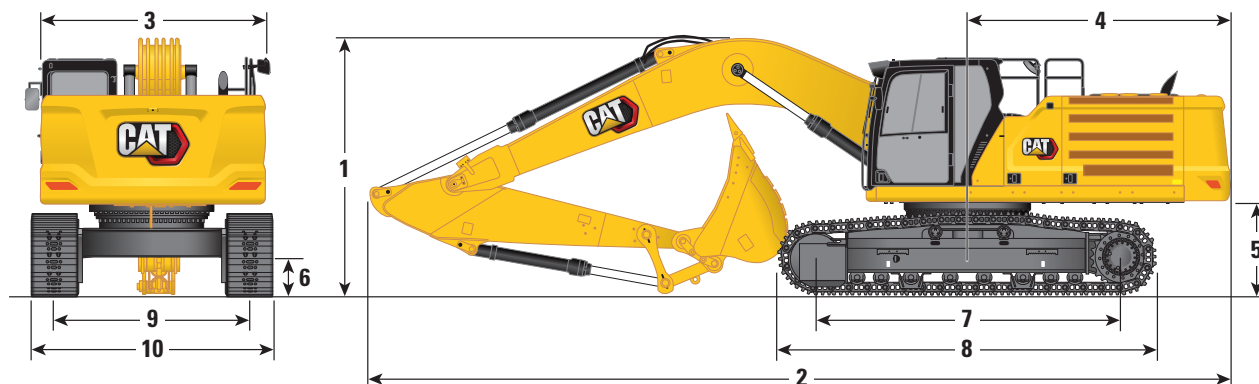
NOTE: Height and length shipping dimensions may vary due to track shoe width and bucket width.

(continued on next page)

340 Hydraulic Excavator Specifications

Dimensions (continued)

All dimensions are approximate and may vary depending on bucket selection.



Undercarriage Option

Long Wide Undercarriage

Boom Options

Mass Boom 6.18 m (20'3")

Stick Options

Mass Stick M2.55TB (8'4")

1 Machine Height:

| | | | | |
|---------------------------------------------------------|---------|--------|---------|--------|
| Cab Height | 3180 mm | 10'5" | 3180 mm | 10'5" |
| OPG Height | 3330 mm | 10'11" | 3330 mm | 10'11" |
| Guardrails/Handrails Height | 3180 mm | 10'5" | 3180 mm | 10'5" |
| With Boom/Stick/Bucket Installed | 3620 mm | 11'11" | 3600 mm | 11'10" |
| | | | 3890 mm | 12'9" |
| With Boom/Stick Installed | 3410 mm | 11'2" | 3410 mm | 11'2" |
| With Boom Installed | 2830 mm | 9'3" | 2830 mm | 9'3" |
| With Boom/Stick/Bucket Installed (with auxiliary lines) | 3630 mm | 11'11" | 3600 mm | 11'10" |
| | | | 3900 mm | 12'10" |
| With Boom/Stick Installed (with auxiliary lines) | 3420 mm | 11'3" | 3420 mm | 11'3" |
| With Boom Installed (with auxiliary lines) | 2900 mm | 9'6" | 2900 mm | 9'6" |

2 Machine Length:

| | | | | |
|---------------------------------------------------------|-----------|-------|-----------|-------|
| With Boom/Stick/Bucket Installed | 10 890 mm | 35'9" | 10 870 mm | 35'8" |
| | | | 10 980 mm | 36'0" |
| With Boom/Stick Installed | 10 830 mm | 35'6" | 10 830 mm | 35'6" |
| With Boom Installed | 9640 mm | 31'8" | 9640 mm | 31'8" |
| With Boom/Stick/Bucket Installed (with auxiliary lines) | 10 890 mm | 35'9" | 10 870 mm | 35'8" |
| | | | 10 980 mm | 36'0" |
| With Boom/Stick Installed (with auxiliary lines) | 10 830 mm | 35'6" | 10 830 mm | 35'6" |
| With Boom Installed (with auxiliary lines) | 9640 mm | 31'8" | 9640 mm | 31'8" |

3 Upperframe Width without Walkways

| | | | | |
|--|---------|------|---------|------|
| | 2970 mm | 9'9" | 2970 mm | 9'9" |
|--|---------|------|---------|------|

4 Tail Swing Radius

| | | | | |
|--|---------|-------|---------|-------|
| | 3530 mm | 11'7" | 3530 mm | 11'7" |
|--|---------|-------|---------|-------|

5 Counterweight Clearance

| | | | | |
|--|---------|------|---------|------|
| | 1260 mm | 4'2" | 1260 mm | 4'2" |
|--|---------|------|---------|------|

6 Ground Clearance

| | | | | |
|--|--------|------|--------|------|
| | 510 mm | 1'8" | 510 mm | 1'8" |
|--|--------|------|--------|------|

7 Track Length – Length to Center of Rollers

| | | | | |
|--|---------|-------|---------|-------|
| | 4040 mm | 13'3" | 4040 mm | 13'3" |
|--|---------|-------|---------|-------|

8 Track Length

| | | | | |
|--|---------|-------|---------|-------|
| | 5030 mm | 16'6" | 5030 mm | 16'6" |
|--|---------|-------|---------|-------|

9 Track Gauge

| | | | | |
|--|---------|------|---------|------|
| | 2740 mm | 9'0" | 2740 mm | 9'0" |
|--|---------|------|---------|------|

10 Track Width/Undercarriage Width (with steps):

| | | | | |
|--------------------|---------|--------|---------|--------|
| 600 mm (24") Shoes | 3340 mm | 10'11" | 3340 mm | 10'11" |
| 700 mm (28") Shoes | 3440 mm | 11'3" | 3440 mm | 11'3" |
| 800 mm (31") Shoes | 3540 mm | 11'7" | 3540 mm | 11'7" |
| 850 mm (33") Shoes | 3590 mm | 11'9" | 3590 mm | 11'9" |

Bucket Type

SDV

GD

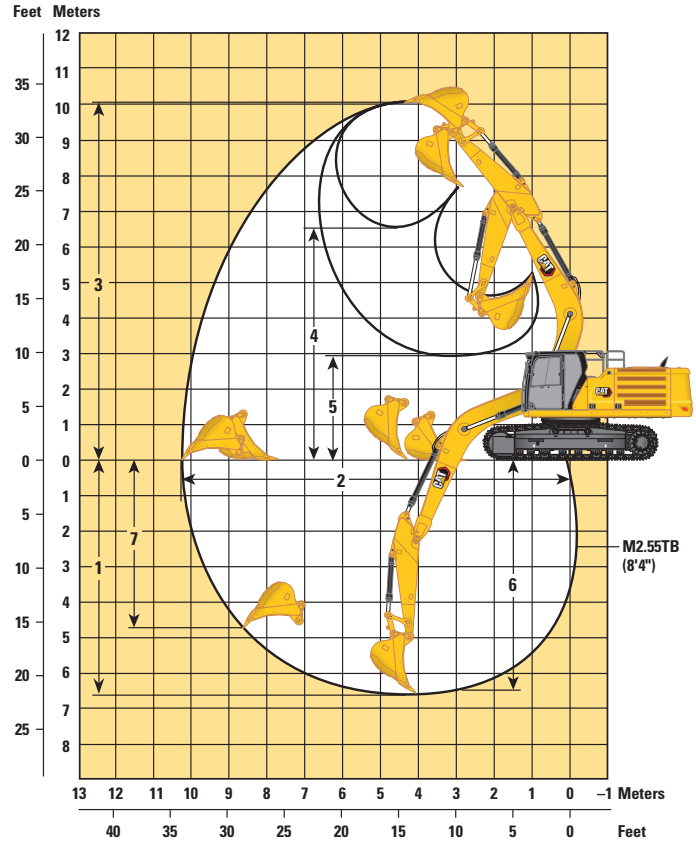
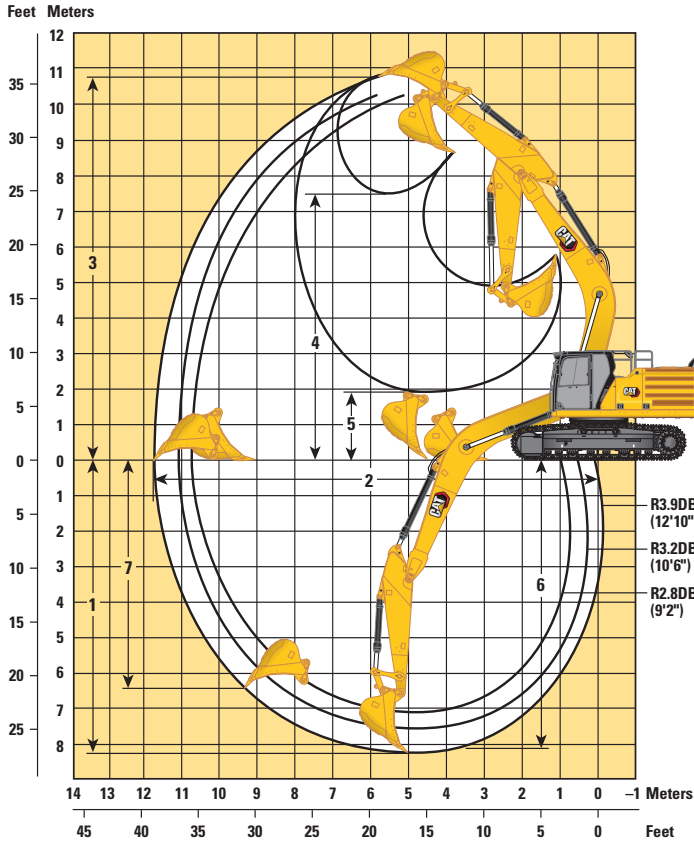
| | | | | |
|-------------------|---------------------|----------------------|---------------------|----------------------|
| Bucket Capacity | 2.78 m ³ | 3.64 yd ³ | 3.00 m ³ | 3.92 yd ³ |
| Bucket Tip Radius | 1960 mm | 6.4 ft | 1880 mm | 6.2 ft |

NOTE: Height and length shipping dimensions may vary due to track shoe width and bucket width.

340 Hydraulic Excavator Specifications

Working Ranges and Forces

All dimensions are approximate and may vary depending on bucket selection.



Undercarriage Option

Long Wide Undercarriage

Boom Options

Reach Boom
6.5 m (21'4")

Mass Boom
6.18 m (20'3")

Stick Options

Reach Stick

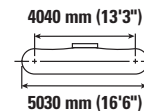
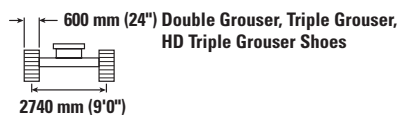
Mass Stick

| | R3.9DB (12'10") | | R3.2DB (10'6") | | R2.8DB (9'2") | | M2.55TB (8'4") | |
|------------------------------------------------------------|---------------------|----------------------|---------------------|----------------------|---------------------|----------------------|---------------------|----------------------|
| | mm | ft | mm | ft | mm | ft | mm | ft |
| 1 Maximum Digging Depth | 8180 | 26'10" | 7480 | 24'6" | 7080 | 23'3" | 6700 | 22'0" |
| 2 Maximum Reach at Ground Line | 11 720 | 38'5" | 11 020 | 36'2" | 10 720 | 35'2" | 10 330 | 33'11" |
| 3 Maximum Cutting Height | 10 780 | 35'4" | 10 360 | 34'0" | 10 410 | 34'2" | 10 010 | 32'10" |
| 4 Maximum Loading Height | 7510 | 24'8" | 7120 | 23'4" | 7120 | 23'4" | 6560 | 21'6" |
| 5 Minimum Loading Height | 1920 | 6'4" | 2620 | 8'7" | 3020 | 9'11" | 2870 | 9'5" |
| 6 Maximum Depth Cut for 2440 mm (8'0") Level Bottom | 8050 | 26'5" | 7320 | 24'0" | 6910 | 22'8" | 6540 | 21'5" |
| 7 Maximum Vertical Wall Digging Depth | 6360 | 20'10" | 5550 | 18'3" | 5520 | 18'1" | 4670 | 15'4" |
| Bucket Digging Force (ISO) | 209 kN | 46,940 lbf | 209 kN | 46,940 lbf | 209 kN | 46,940 lbf | 263 kN | 59,210 lbf |
| Stick Digging Force (ISO) | 144 kN | 32,360 lbf | 165 kN | 37,200 lbf | 184 kN | 41,370 lbf | 190 kN | 42,780 lbf |
| Bucket Digging Force (ISO) – auto dig boost | 227 kN | 50,960 lbf | 227 kN | 50,960 lbf | 227 kN | 50,960 lbf | 286 kN | 64,290 lbf |
| Stick Digging Force (ISO) – auto dig boost | 156 kN | 35,130 lbf | 180 kN | 40,390 lbf | 200 kN | 44,920 lbf | 207 kN | 46,450 lbf |
| Bucket Type | GD | | GD | | GD | | SDV | |
| Bucket Capacity | 2.50 m ³ | 3.27 yd ³ | 2.50 m ³ | 3.27 yd ³ | 2.50 m ³ | 3.27 yd ³ | 2.78 m ³ | 3.64 yd ³ |
| Bucket Tip Radius | 1760 mm | 5.8 ft | 1760 mm | 5.8 ft | 1760 mm | 5.8 ft | 1960 mm | 6.4 ft |

340 Hydraulic Excavator Specifications

HD Reach Boom Lift Capacities – Counterweight: 7.56 mt (16,700 lb) – without Bucket, Heavy Lift: On

Long Wide Undercarriage



| | | 1500 mm/5'0" | | 3000 mm/10'0" | | 4500 mm/15'0" | | 6000 mm/20'0" | | 7500 mm/25'0" | | 9000 mm/30'0" | | mm ft/in | | |
|--------------------|----------|--------------------|--------------------|--------------------|--------------------|--------------------|--------------------|--------------------|------------------|--------------------|------------------|------------------|----------------|------------------|------------------|-----------------|
| | | | | | | | | | | | | | | | | |
| 9000 mm 30'0" | kg lb | | | | | | | | | | | | | *6150 *13,650 | *6150 *13,650 | 7360 23'8" |
| 7500 mm 25'0" | kg lb | | | | | | | | | *7600 *16,800 | *7600 *16,800 | | | *5700 *12,600 | *5700 *12,600 | 8550 27'9" |
| 6000 mm 20'0" | kg lb | | | | | | | | | *7900 *17,300 | *7900 *17,300 | *7450 *14,400 | 6250 13,400 | *5550 *12,250 | *5550 *12,250 | 9340 30'6" |
| 4500 mm 15'0" | kg lb | | | | | | | *9700 *21,000 | *9700 *21,000 | *8650 *18,850 | 8250 17,750 | *8100 *17,700 | 6150 13,200 | *5550 *12,250 | 5300 11,650 | 9850 32'2" |
| 3000 mm 10'0" | kg lb | | | | | *15 250 *32,700 | *15 250 *32,700 | *11 500 *24,850 | 11 050 23,750 | *9650 *20,900 | 7900 17,050 | *8600 *18,700 | 6000 12,850 | *5750 *12,650 | 4950 10,950 | 10 100 33'1" |
| 1500 mm 5'0" | kg lb | | | | | *18 350 *39,550 | 15 800 34,050 | *13 200 *28,550 | 10 450 22,450 | *10 600 *23,000 | 7600 16,300 | 8500 18,300 | 5800 12,450 | *6100 *13,400 | 4850 10,650 | 10 130 33'2" |
| 0 mm 0'0" | kg lb | | | *8200 *18,700 | *8200 *18,700 | *19 950 *43,150 | 15 150 32,600 | *14 400 *31,150 | 10 000 21,500 | 10 900 23,500 | 7300 15,750 | 8350 17,950 | 5650 12,150 | *6650 *14,650 | 4900 10,800 | 9930 32'6" |
| -1500 mm -5'0" | kg lb | *8600 *19,200 | *8600 *19,200 | *12 900 *29,100 | *12 900 *29,100 | *20 200 *43,750 | 14 900 32,000 | *14 850 *32,150 | 9750 21,000 | 10 750 23,100 | 7150 15,400 | 8250 17,800 | 5600 12,000 | *7550 *16,700 | 5200 11,450 | 9480 31'0" |
| -3000 mm -10'0" | kg lb | *13 650 *30,550 | *13 650 *30,550 | *18 800 *42,550 | *18 800 *42,550 | *19 300 *41,800 | 14 900 32,050 | *14 500 *31,300 | 9700 20,900 | 10 700 23,050 | 7150 15,350 | | | 8650 19,100 | 5800 12,850 | 8760 28'7" |
| -4500 mm -15'0" | kg lb | *19 600 *44,050 | *19 600 *44,050 | *23 850 *51,400 | *23 850 *51,400 | *17 200 *37,050 | 15 150 32,550 | *13 000 *27,950 | 9850 21,200 | *9750 21,200 | 7250 | | | *9350 *20,550 | 7050 15,750 | 7680 24'11" |
| -6000 mm -20'0" | kg lb | | | | | *13 050 *27,500 | *13 050 *27,500 | *9200 *20,500 | *9200 *20,500 | | | | | *9100 *19,900 | *9100 *19,900 | 6040 19'4" |



ISO 10567:2007



* Indicates that the load is limited by hydraulic lifting capacity rather than tipping load. The above loads are in compliance with hydraulic excavator lift capacity standard ISO 10567:2007. They do not exceed 87% of hydraulic lifting capacity or 75% of tipping load. Weight of all lifting accessories must be deducted from the above lifting capacities. Lifting capacities are based on the machine standing on a firm, uniform supporting surface. The use of a work tool attachment point to handle/lift objects, could affect the machine lift performance.

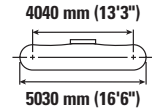
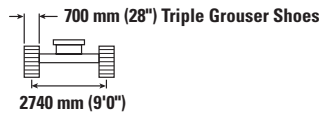
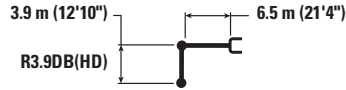
Lift capacity stays with ±5% for all available track shoes.

Always refer to the appropriate Operation and Maintenance Manual for specific product information.

340 Hydraulic Excavator Specifications

HD Reach Boom Lift Capacities – Counterweight: 7.56 mt (16,700 lb) – without Bucket, Heavy Lift: On

Long Wide Undercarriage



| | | 1500 mm/5'0" | | 3000 mm/10'0" | | 4500 mm/15'0" | | 6000 mm/20'0" | | 7500 mm/25'0" | | 9000 mm/30'0" | | mm ft/in | | |
|--------------------|----------|--------------------|--------------------|--------------------|--------------------|--------------------|--------------------|--------------------|------------------|--------------------|------------------|------------------|----------------|------------------|------------------|-----------------|
| | | | | | | | | | | | | | | | | |
| 9000 mm 30'0" | kg lb | | | | | | | | | | | | | *6150 *13,650 | *6150 *13,650 | 7360 23'8" |
| 7500 mm 25'0" | kg lb | | | | | | | | | *7600 *16,800 | *7600 *16,800 | | | *5700 *12,600 | *5700 *12,600 | 8550 27'9" |
| 6000 mm 20'0" | kg lb | | | | | | | | | *7900 *17,300 | *7900 *17,300 | *7450 *14,400 | 6200 13,300 | *5550 *12,250 | *5550 *12,250 | 9340 30'6" |
| 4500 mm 15'0" | kg lb | | | | | | | *9700 *21,000 | *9700 *21,000 | *8650 *18,850 | 8200 17,600 | *8100 *17,700 | 6100 13,100 | *5550 *12,250 | 5250 11,550 | 9850 32'2" |
| 3000 mm 10'0" | kg lb | | | | | *15 250 *32,700 | *15 250 *32,700 | *11 500 *24,850 | 10 950 23,550 | *9650 *20,900 | 7850 16,850 | *8600 *18,500 | 5950 12,750 | *5750 *12,650 | 4900 10,800 | 10 100 33'1" |
| 1500 mm 5'0" | kg lb | | | | | *18 350 *39,550 | 15 650 33,750 | *13 200 *28,550 | 10 350 22,250 | *10 600 *23,000 | 7500 16,150 | 8400 18,100 | 5750 12,350 | *6100 *13,400 | 4800 10,550 | 10 130 33'2" |
| 0 mm 0'0" | kg lb | | | *8200 *18,700 | *8200 *18,700 | *19 950 *43,150 | 15 000 32,250 | *14 400 *31,150 | 9900 21,300 | 10 800 23,250 | 7250 15,600 | 8250 17,750 | 5600 12,050 | *6650 *14,650 | 4850 10,700 | 9930 32'6" |
| -1500 mm -5'0" | kg lb | *8600 *19,200 | *8600 *19,200 | *12 900 *29,100 | *12 900 *29,100 | *20 200 *43,750 | 14 750 31,700 | *14 850 *32,000 | 9650 20,800 | 10 650 22,850 | 7100 15,250 | 8200 17,600 | 5500 11,900 | *7550 *16,700 | 5150 11,350 | 9480 31'0" |
| -3000 mm -10'0" | kg lb | *13 650 *30,550 | *13 650 *30,550 | *18 800 *42,550 | *18 800 *42,550 | *19 300 *41,800 | 14 750 31,750 | *14 500 *31,300 | 9600 20,700 | 10 600 22,800 | 7050 15,200 | | | 8550 18,900 | 5750 12,700 | 8760 28'7" |
| -4500 mm -15'0" | kg lb | *19 600 *44,050 | *19 600 *44,050 | *23 850 *51,400 | *23 850 *51,400 | *17 200 *37,050 | 15 000 32,250 | *13 000 *27,950 | 9750 21,000 | *9750 21,000 | 7200 | | | *9350 *20,550 | 7000 15,600 | 7680 24'11" |
| -6000 mm -20'0" | kg lb | | | | | *13 050 *27,500 | *13 050 *27,500 | *9200 *20,000 | *9200 *20,000 | | | | | *9100 *19,900 | *9100 *19,900 | 6040 19'4" |



ISO 10567:2007



* Indicates that the load is limited by hydraulic lifting capacity rather than tipping load. The above loads are in compliance with hydraulic excavator lift capacity standard ISO 10567:2007. They do not exceed 87% of hydraulic lifting capacity or 75% of tipping load. Weight of all lifting accessories must be deducted from the above lifting capacities. Lifting capacities are based on the machine standing on a firm, uniform supporting surface. The use of a work tool attachment point to handle/lift objects, could affect the machine lift performance.

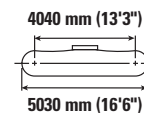
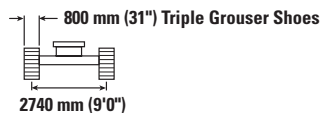
Lift capacity stays with ±5% for all available track shoes.

Always refer to the appropriate Operation and Maintenance Manual for specific product information.

340 Hydraulic Excavator Specifications

HD Reach Boom Lift Capacities – Counterweight: 7.56 mt (16,700 lb) – without Bucket, Heavy Lift: On

Long Wide Undercarriage



| Reach | Unit | 1500 mm/5'0" | | 3000 mm/10'0" | | 4500 mm/15'0" | | 6000 mm/20'0" | | 7500 mm/25'0" | | 9000 mm/30'0" | | mm ft/in | | |
|--------------------|----------|--------------------|--------------------|--------------------|--------------------|--------------------|--------------------|--------------------|------------------|--------------------|------------------|------------------|----------------|------------------|------------------|-----------------|
| | | kg lb | kg lb | kg lb | kg lb | kg lb | kg lb | kg lb | kg lb | kg lb | kg lb | kg lb | kg lb | kg lb | mm ft/in | |
| 9000 mm 30'0" | kg lb | | | | | | | | | | | | | *6150 *13,650 | *6150 *13,650 | 7360 23'8" |
| 7500 mm 25'0" | kg lb | | | | | | | | | *7600 *16,800 | *7600 *16,800 | | | *5700 *12,600 | *5700 *12,600 | 8550 27'9" |
| 6000 mm 20'0" | kg lb | | | | | | | | | *7900 *17,300 | *7900 *17,300 | *7450 *14,400 | 6300 13,500 | *5550 *12,250 | *5550 *12,250 | 9340 30'6" |
| 4500 mm 15'0" | kg lb | | | | | | | *9700 *21,000 | *9700 *21,000 | *8650 *18,850 | 8300 17,850 | *8100 *17,700 | 6200 13,300 | *5550 *12,250 | 5300 11,750 | 9850 32'2" |
| 3000 mm 10'0" | kg lb | | | | | *15 250 *32,700 | *15 250 *32,700 | *11 500 *24,850 | 11 100 23,900 | *9650 *20,900 | 7950 17,150 | *8600 *18,700 | 6000 12,950 | *5750 *12,650 | 5000 11,000 | 10 100 33'1" |
| 1500 mm 5'0" | kg lb | | | | | *18 350 *39,550 | 15 900 34,250 | *13 200 *28,550 | 10 500 22,600 | *10 600 *23,000 | 7650 16,400 | 8550 18,400 | 5850 12,550 | *6100 *13,400 | 4900 10,750 | 10 130 33'2" |
| 0 mm 0'0" | kg lb | | | *8200 *18,700 | *8200 *18,700 | *19 950 *43,150 | 15 250 32,800 | *14 400 *31,150 | 10 050 21,650 | 11 000 23,650 | 7350 15,850 | 8400 18,100 | 5700 12,250 | *6650 *14,650 | 4950 10,900 | 9930 32'6" |
| -1500 mm -5'0" | kg lb | *8600 *19,200 | *8600 *19,200 | *12 900 *29,100 | *12 900 *29,100 | *20 200 *43,750 | 15 000 32,200 | *14 850 *32,150 | 9800 21,150 | 10 800 23,250 | 7200 15,500 | 8300 17,900 | 5600 12,100 | *7550 *16,700 | 5250 11,550 | 9480 31'0" |
| -3000 mm -10'0" | kg lb | *13 650 *30,550 | *13 650 *30,550 | *18 800 *42,550 | *18 800 *42,550 | *19 300 *41,800 | 15 000 32,250 | *14 500 *31,300 | 9750 21,050 | 10 800 23,200 | 7150 15,450 | | | 8700 19,200 | 5850 12,950 | 8760 28'7" |
| -4500 mm -15'0" | kg lb | *19 600 *44,050 | *19 600 *44,050 | *23 850 *51,400 | *23 850 *51,400 | *17 200 *37,050 | 15 250 32,750 | *13 000 *27,950 | 9900 21,350 | *9750 7300 | | | | *9350 *20,550 | 7100 15,850 | 7680 24'11" |
| -6000 mm -20'0" | kg lb | | | | | *13 050 *27,500 | *13 050 *27,500 | *9200 *20,300 | *9200 *20,300 | | | | | *9100 *19,900 | *9100 *19,900 | 6040 19'4" |



ISO 10567:2007



* Indicates that the load is limited by hydraulic lifting capacity rather than tipping load. The above loads are in compliance with hydraulic excavator lift capacity standard ISO 10567:2007. They do not exceed 87% of hydraulic lifting capacity or 75% of tipping load. Weight of all lifting accessories must be deducted from the above lifting capacities. Lifting capacities are based on the machine standing on a firm, uniform supporting surface. The use of a work tool attachment point to handle/lift objects, could affect the machine lift performance.

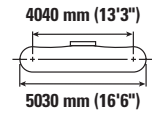
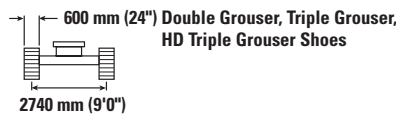
Lift capacity stays with ±5% for all available track shoes.

Always refer to the appropriate Operation and Maintenance Manual for specific product information.

340 Hydraulic Excavator Specifications

HD Reach Boom Lift Capacities – Counterweight: 7.56 mt (16,700 lb) – without Bucket, Heavy Lift: On

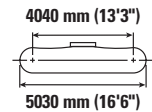
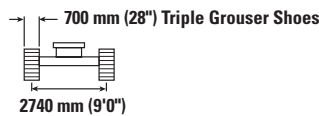
Long Wide Undercarriage



| | | 3000 mm/10'0" | | 4500 mm/15'0" | | 6000 mm/20'0" | | 7500 mm/25'0" | | 9000 mm/30'0" | | mm ft/in | | |
|--------------------|----------|--------------------|--------------------|--------------------|--------------------|--------------------|--------------------|--------------------|-----------------|----------------|----------------|--------------------|------------------|----------------|
| | | | | | | | | | | | | | | |
| 7500 mm 25'0" | kg lb | | | | | | | *8700 *16,300 | 8350 *16,300 | | | *7350 *16,200 | *7350 *16,200 | 7720 25'0" |
| 6000 mm 20'0" | kg lb | | | | | | | *8800 *19,300 | 8250 17,750 | | | *7150 *15,700 | 6550 14,600 | 8590 28'0" |
| 4500 mm 15'0" | kg lb | | | *13 450 *28,900 | *13 450 *28,900 | *10 800 *23,400 | *10 800 *23,400 | *9450 *20,600 | 8000 17,250 | *8450 | 6000 | *7200 *15,800 | 5850 12,900 | 9140 29'10" |
| 3000 mm 10'0" | kg lb | | | *17 050 *36,600 | 16 250 35,100 | *12 500 *27,050 | 10 700 23,000 | *10 350 *22,450 | 7700 16,600 | 8500 18,300 | 5850 12,600 | *7450 *16,400 | 5450 12,050 | 9410 30'10" |
| 1500 mm 5'0" | kg lb | | | *19 600 *42,250 | 15 300 32,900 | *14 000 *30,250 | 10 150 21,900 | 10 950 23,600 | 7450 16,000 | 8350 18,000 | 5700 12,300 | 7800 17,150 | 5350 11,750 | 9440 30'11" |
| 0 mm 0'0" | kg lb | | | *20 400 *44,200 | 14 850 31,950 | *14 850 *32,150 | 9800 21,150 | 10 750 23,100 | 7200 15,550 | 8250 17,750 | 5600 12,100 | 8000 17,550 | 5450 11,950 | 9220 30'2" |
| -1500 mm -5'0" | kg lb | *14 100 *31,900 | *14 100 *31,900 | *20 000 *43,350 | 14 800 31,750 | 14 850 31,950 | 9700 20,850 | 10 650 22,900 | 7100 15,350 | | | 8600 18,900 | 5800 12,800 | 8740 28'7" |
| -3000 mm -10'0" | kg lb | *22 250 *50,350 | *22 250 *50,350 | *18 550 *40,150 | 14 900 32,000 | *14 100 *30,500 | 9700 20,900 | 10 700 23,000 | 7150 15,450 | | | 9850 21,850 | 6650 14,750 | 7950 25'11" |
| -4500 mm -15'0" | kg lb | *20 800 *44,850 | *20 800 *44,850 | *15 700 *33,700 | 15 200 32,750 | *11 900 *25,250 | 9950 21,450 | | | | | *10 050 *22,100 | 8500 19,100 | 6740 21'10" |

HD Reach Boom Lift Capacities – Counterweight: 7.56 mt (16,700 lb) – without Bucket, Heavy Lift: On

Long Wide Undercarriage



| | | 3000 mm/10'0" | | 4500 mm/15'0" | | 6000 mm/20'0" | | 7500 mm/25'0" | | 9000 mm/30'0" | | mm ft/in | | |
|--------------------|----------|--------------------|--------------------|--------------------|--------------------|--------------------|--------------------|--------------------|-----------------|----------------|----------------|--------------------|------------------|----------------|
| | | | | | | | | | | | | | | |
| 7500 mm 25'0" | kg lb | | | | | | | *8700 *16,300 | 8400 *16,300 | | | *7350 *16,200 | *7350 *16,200 | 7720 25'0" |
| 6000 mm 20'0" | kg lb | | | | | | | *8800 *19,300 | 8300 17,850 | | | *7150 *15,700 | 6650 14,750 | 8590 28'0" |
| 4500 mm 15'0" | kg lb | | | *13 450 *28,900 | *13 450 *28,900 | *10 800 *23,400 | *10 800 *23,400 | *9450 *20,600 | 8100 17,400 | *8450 | 6050 | *7200 *15,800 | 5900 13,050 | 9140 29'10" |
| 3000 mm 10'0" | kg lb | | | *17 050 *36,600 | 16 400 35,350 | *12 500 *27,050 | 10 750 23,200 | *10 350 *22,450 | 7800 16,750 | 8600 18,450 | 5900 12,700 | *7450 *16,400 | 5500 12,150 | 9410 30'10" |
| 1500 mm 5'0" | kg lb | | | *19 600 *42,250 | 15 400 33,200 | *14 000 *30,250 | 10 250 22,050 | 11 050 23,800 | 7500 16,150 | 8450 18,150 | 5750 12,400 | 7850 17,300 | 5400 11,850 | 9440 30'11" |
| 0 mm 0'0" | kg lb | | | *20 400 *44,200 | 15 000 32,250 | *14 850 *32,150 | 9900 21,350 | 10 850 23,300 | 7300 15,700 | 8350 17,950 | 5650 12,200 | 8050 17,750 | 5500 12,050 | 9220 30'2" |
| -1500 mm -5'0" | kg lb | *14 100 *31,900 | *14 100 *31,900 | *20 000 *43,350 | 14 900 32,050 | *14 950 32,250 | 9750 21,000 | 10 750 23,100 | 7200 15,500 | | | 8650 19,100 | 5850 12,950 | 8740 28'7" |
| -3000 mm -10'0" | kg lb | *22 250 *50,350 | *22 250 *50,350 | *18 550 *40,150 | 15 050 32,300 | *14 100 *30,500 | 9800 21,100 | 10 800 23,200 | 7250 15,600 | | | 9950 *22,050 | 6700 14,850 | 7950 25'11" |
| -4500 mm -15'0" | kg lb | *20 800 *44,850 | *20 800 *44,850 | *15 700 *33,700 | 15 350 33,050 | *11 900 *25,250 | 10 050 21,650 | | | | | *10 050 *22,100 | 8600 19,250 | 6740 21'10" |



ISO 10567:2007



* Indicates that the load is limited by hydraulic lifting capacity rather than tipping load. The above loads are in compliance with hydraulic excavator lift capacity standard ISO 10567:2007. They do not exceed 87% of hydraulic lifting capacity or 75% of tipping load. Weight of all lifting accessories must be deducted from the above lifting capacities. Lifting capacities are based on the machine standing on a firm, uniform supporting surface. The use of a work tool attachment point to handle/lift objects, could affect the machine lift performance.

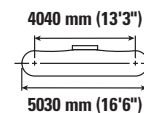
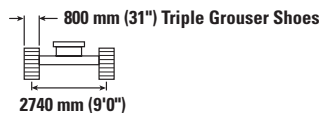
Lift capacity stays with ±5% for all available track shoes.

Always refer to the appropriate Operation and Maintenance Manual for specific product information.

340 Hydraulic Excavator Specifications

HD Reach Boom Lift Capacities – Counterweight: 7.56 mt (16,700 lb) – without Bucket, Heavy Lift: On

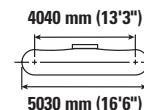
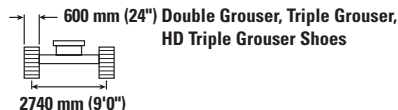
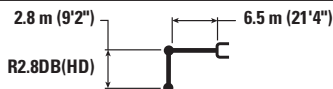
Long Wide Undercarriage



| | | 3000 mm/10'0" | | 4500 mm/15'0" | | 6000 mm/20'0" | | 7500 mm/25'0" | | 9000 mm/30'0" | | mm ft/in | | |
|--------------------|----------|--------------------|--------------------|--------------------|--------------------|--------------------|--------------------|--------------------|-----------------|----------------|----------------|--------------------|------------------|----------------|
| | | | | | | | | | | | | | | |
| 7500 mm 25'0" | kg lb | | | | | | | *8700 *16,300 | 8500 *16,300 | | | *7350 *16,200 | *7350 *16,200 | 7720 25'0" |
| 6000 mm 20'0" | kg lb | | | | | | | *8800 *19,300 | 8450 18,150 | | | *7150 *15,700 | 6750 14,950 | 8590 28'0" |
| 4500 mm 15'0" | kg lb | | | *13 450 *28,900 | *13 450 *28,900 | *10 800 *23,400 | *10 800 *23,400 | *9450 *20,600 | 8200 17,650 | *8450 | 6150 | *7200 *15,800 | 6000 13,250 | 9140 29'10" |
| 3000 mm 10'0" | kg lb | | | *17 050 *36,600 | 16 650 35,850 | *12 500 *27,050 | 10 900 23,550 | *10 350 *22,450 | 7900 17,000 | 8750 18,800 | 6000 12,900 | *7450 *16,400 | 5600 12,350 | 9410 30'10" |
| 1500 mm 5'0" | kg lb | | | *19 600 *42,250 | 15 650 33,700 | *14 000 *30,250 | 10 400 22,400 | *11 200 *24,200 | 7600 16,400 | 8600 18,450 | 5850 12,600 | *8000 *17,600 | 5450 12,050 | 9440 30'11" |
| 0 mm 0'0" | kg lb | | | *20 400 *44,200 | 15 250 32,750 | *14 850 *32,150 | 10 050 21,650 | 11 000 23,700 | 7400 15,950 | 8450 18,250 | 5750 12,400 | 8200 18,050 | 5600 12,250 | 9220 30'2" |
| -1500 mm -5'0" | kg lb | *14 100 *31,900 | *14 100 *31,900 | *20 000 *43,350 | 15 150 32,550 | *14 950 *32,350 | 9900 21,350 | 10 900 23,500 | 7300 15,750 | | | 8800 19,400 | 5950 13,150 | 8740 28'7" |
| -3000 mm -10'0" | kg lb | *22 250 *50,350 | *22 250 *50,350 | *18 550 *40,150 | 15 250 32,800 | *14 100 *30,500 | 9950 21,450 | *10 950 *23,400 | 7350 15,850 | | | *10 000 *22,050 | 6850 15,100 | 7950 25'11" |
| -4500 mm -15'0" | kg lb | *20 800 *44,850 | *20 800 *44,850 | *15 700 *33,700 | 15 600 33,550 | *11 900 *25,250 | 10 200 22,000 | | | | | *10 050 *22,100 | 8750 19,550 | 6740 21'10" |

HD Reach Boom Lift Capacities – Counterweight: 7.56 mt (16,700 lb) – without Bucket, Heavy Lift: On

Long Wide Undercarriage



| | | 3000 mm/10'0" | | 4500 mm/15'0" | | 6000 mm/20'0" | | 7500 mm/25'0" | | 9000 mm/30'0" | | mm ft/in | | |
|--------------------|----------|--------------------|--------------------|--------------------|--------------------|--------------------|--------------------|--------------------|----------------|---------------|------|--------------------|----------------|----------------|
| | | | | | | | | | | | | | | |
| 7500 mm 25'0" | kg lb | | | | | | | | | | | *9300 *20,600 | 8500 19,150 | 7350 23'9" |
| 6000 mm 20'0" | kg lb | | | | | *10 050 *21,800 | *10 050 *21,800 | *9350 *20,450 | 8200 17,600 | | | *8950 *19,700 | 6950 15,500 | 8260 26'11" |
| 4500 mm 15'0" | kg lb | | | *14 500 *31,150 | *14 500 *31,150 | *11 400 *24,700 | 11 150 24,100 | *9900 *21,600 | 8000 17,150 | | | 8900 *19,700 | 6150 13,600 | 8830 28'10" |
| 3000 mm 10'0" | kg lb | | | *18 050 *38,750 | 16 000 34,550 | *13 050 *28,200 | 10 600 22,850 | *10 750 *23,250 | 7700 16,550 | 8500 | 5850 | 8350 18,400 | 5750 12,650 | 9110 29'10" |
| 1500 mm 5'0" | kg lb | | | *16 850 *40,950 | 15 150 32,700 | *14 400 *31,100 | 10 150 21,800 | 10 950 23,600 | 7450 16,000 | 8400 | 5750 | 8200 18,050 | 5600 12,350 | 9140 29'11" |
| 0 mm 0'0" | kg lb | | | *19 900 *44,400 | 14 900 32,050 | 15 050 32,350 | 9850 21,200 | 10 800 23,200 | 7250 15,650 | | | 8450 18,550 | 5750 12,650 | 8920 29'2" |
| -1500 mm -5'0" | kg lb | *13 200 *30,050 | *13 200 *30,050 | *19 700 *42,800 | 14 900 32,000 | *14 900 *32,100 | 9750 21,000 | 10 700 23,050 | 7200 15,500 | | | 9150 20,150 | 6200 13,650 | 8420 27'6" |
| -3000 mm -10'0" | kg lb | *23 600 *51,250 | *23 600 *51,250 | *17 950 *38,850 | 15 050 32,350 | *13 800 *29,750 | 9800 21,150 | *10 450 23,000 | 7300 | | | *10 200 *22,500 | 7200 15,950 | 7590 24'9" |
| -4500 mm -15'0" | kg lb | *18 800 *40,450 | *18 800 *40,450 | *14 600 *31,250 | *14 600 *31,250 | *10 850 *22,750 | 10 150 21,900 | | | | | *9950 *21,850 | 9500 21,300 | 6310 20'5" |



ISO 10567:2007



* Indicates that the load is limited by hydraulic lifting capacity rather than tipping load. The above loads are in compliance with hydraulic excavator lift capacity standard ISO 10567:2007. They do not exceed 87% of hydraulic lifting capacity or 75% of tipping load. Weight of all lifting accessories must be deducted from the above lifting capacities. Lifting capacities are based on the machine standing on a firm, uniform supporting surface. The use of a work tool attachment point to handle/lift objects, could affect the machine lift performance.

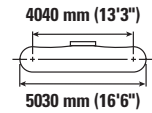
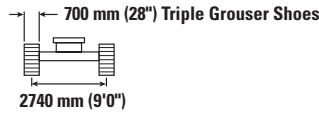
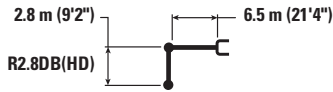
Lift capacity stays with ±5% for all available track shoes.

Always refer to the appropriate Operation and Maintenance Manual for specific product information.

340 Hydraulic Excavator Specifications

HD Reach Boom Lift Capacities – Counterweight: 7.56 mt (16,700 lb) – without Bucket, Heavy Lift: On

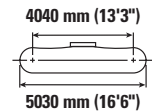
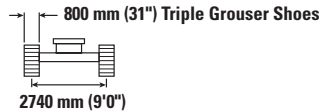
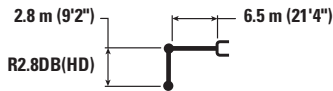
Long Wide Undercarriage



| | | 3000 mm/10'0" | | 4500 mm/15'0" | | 6000 mm/20'0" | | 7500 mm/25'0" | | 9000 mm/30'0" | | mm ft/in | | |
|--------------------|----------|--------------------|--------------------|--------------------|--------------------|--------------------|--------------------|--------------------|----------------|---------------|------|--------------------|----------------|----------------|
| | | | | | | | | | | | | | | |
| 7500 mm 25'0" | kg lb | | | | | | | | | | | *9300 *20,600 | 8600 19,300 | 7350 23'9" |
| 6000 mm 20'0" | kg lb | | | | | *10 050 *21,800 | *10 050 *21,800 | *9350 *20,450 | 8250 17,750 | | | *8950 *19,700 | 7000 15,600 | 8260 26'11" |
| 4500 mm 15'0" | kg lb | | | *14 500 *31,150 | *14 500 *31,150 | *11 400 *24,700 | 11 250 24,250 | *9900 *21,600 | 8050 17,300 | | | *8950 *19,700 | 6200 13,750 | 8830 28'10" |
| 3000 mm 10'0" | kg lb | | | *18 050 *38,750 | 16 150 34,800 | *13 050 *28,200 | 10 700 23,050 | *10 750 *23,250 | 7750 16,700 | 8600 | 5900 | 8450 18,600 | 5800 12,800 | 9110 29'10" |
| 1500 mm 5'0" | kg lb | | | *16 850 *40,950 | 15 300 32,950 | *14 400 *31,100 | 10 200 22,000 | 11 050 23,800 | 7500 16,150 | 8450 | 5800 | 8300 18,200 | 5650 12,500 | 9140 29'11" |
| 0 mm 0'0" | kg lb | | | *19 900 *44,400 | 15 050 32,300 | *15 050 *32,600 | 9950 21,400 | 10 850 23,400 | 7300 15,750 | | | 8500 18,700 | 5800 12,750 | 8920 29'2" |
| -1500 mm -5'0" | kg lb | *13 200 *30,050 | *13 200 *30,050 | *19 700 *42,800 | 15 000 32,300 | *14 900 *32,300 | 9850 21,200 | 10 800 23,250 | 7250 15,650 | | | 9200 20,300 | 6250 13,800 | 8420 27'6" |
| -3000 mm -10'0" | kg lb | *23 600 *51,250 | *23 600 *51,250 | *17 950 *38,850 | 15 200 32,650 | *13 800 *29,750 | 9900 21,350 | *10 450 | 7350 | | | *10 200 *22,500 | 7250 16,100 | 7590 24'9" |
| -4500 mm -15'0" | kg lb | *18 800 *40,450 | *18 800 *40,450 | *14 600 *31,250 | *14 600 *31,250 | *10 850 *22,750 | 10 250 22,100 | | | | | *9950 *21,850 | 9600 21,500 | 6310 20'5" |

HD Reach Boom Lift Capacities – Counterweight: 7.56 mt (16,700 lb) – without Bucket, Heavy Lift: On

Long Wide Undercarriage



| | | 3000 mm/10'0" | | 4500 mm/15'0" | | 6000 mm/20'0" | | 7500 mm/25'0" | | 9000 mm/30'0" | | mm ft/in | | |
|--------------------|----------|--------------------|--------------------|--------------------|--------------------|--------------------|--------------------|--------------------|----------------|---------------|------|--------------------|----------------|----------------|
| | | | | | | | | | | | | | | |
| 7500 mm 25'0" | kg lb | | | | | | | | | | | *9300 *20,600 | 8700 19,550 | 7350 23'9" |
| 6000 mm 20'0" | kg lb | | | | | *10 050 *21,800 | *10 050 *21,800 | *9350 *20,450 | 8400 18,000 | | | *8950 *19,700 | 7150 15,850 | 8260 26'11" |
| 4500 mm 15'0" | kg lb | | | *14 500 *31,150 | *14 500 *31,150 | *11 400 *24,700 | *11 400 24,600 | *9900 *21,600 | 8150 17,550 | | | *8950 *19,700 | 6300 13,950 | 8830 28'10" |
| 3000 mm 10'0" | kg lb | | | *18 050 *38,750 | 16 350 35,350 | *13 050 *28,200 | 10 850 23,400 | *10 750 *23,250 | 7900 16,950 | 8750 | 6000 | 8550 18,900 | 5900 13,000 | 9110 29'10" |
| 1500 mm 5'0" | kg lb | | | *16 850 *40,950 | 15 550 33,450 | *14 400 *31,100 | 10 350 22,350 | 11 250 24,200 | 7600 16,400 | 8600 | 5900 | 8400 18,550 | 5750 12,700 | 9140 29'11" |
| 0 mm 0'0" | kg lb | | | *19 900 *44,400 | 15 250 32,800 | *15 050 *32,600 | 10 100 21,750 | 11 050 23,800 | 7450 16,050 | | | 8650 19,050 | 5900 13,000 | 8920 29'2" |
| -1500 mm -5'0" | kg lb | *13 200 *30,050 | *13 200 *30,050 | *19 700 *42,800 | 15 250 32,800 | *14 900 *32,300 | 10 000 21,500 | 11 000 23,650 | 7400 15,900 | | | 9350 20,650 | 6350 14,000 | 8420 27'6" |
| -3000 mm -10'0" | kg lb | *23 600 *51,250 | *23 600 *51,250 | *17 950 *38,850 | 15 450 33,150 | *13 800 *29,750 | 10 050 21,700 | *10 450 | 7500 | | | *10 200 *22,500 | 7400 16,350 | 7590 24'9" |
| -4500 mm -15'0" | kg lb | *18 800 *40,450 | *18 800 *40,450 | *14 600 *31,250 | *14 600 *31,250 | *10 850 *22,750 | 10 400 22,450 | | | | | *9950 *21,850 | 9750 21,850 | 6310 20'5" |



ISO 10567:2007



* Indicates that the load is limited by hydraulic lifting capacity rather than tipping load. The above loads are in compliance with hydraulic excavator lift capacity standard ISO 10567:2007. They do not exceed 87% of hydraulic lifting capacity or 75% of tipping load. Weight of all lifting accessories must be deducted from the above lifting capacities. Lifting capacities are based on the machine standing on a firm, uniform supporting surface. The use of a work tool attachment point to handle/lift objects, could affect the machine lift performance.

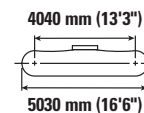
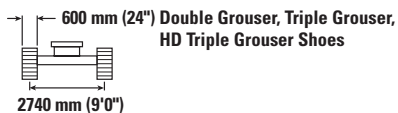
Lift capacity stays with ±5% for all available track shoes.

Always refer to the appropriate Operation and Maintenance Manual for specific product information.

340 Hydraulic Excavator Specifications

Mass Boom Lift Capacities – Counterweight: 7.56 mt (16,700 lb) – without Bucket, Heavy Lift: On

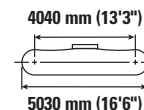
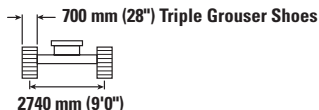
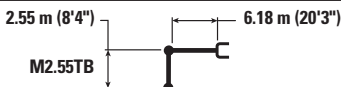
Long Wide Undercarriage



| Reach mm ft/in | kg lb | 3000 mm/10'0" | | 4500 mm/15'0" | | 6000 mm/20'0" | | 7500 mm/25'0" | | mm ft/in | | |
|----------------------|----------|--------------------|--------------------|--------------------|--------------------|--------------------|--------------------|--------------------|----------------|--------------------|------------------|----------------|
| | | | | | | | | | | | | |
| 7500 mm 25'0" | kg lb | | | | | *10 150 *22,350 | *10 150 *22,350 | | | *8950 *19,900 | *8950 *19,900 | 6600 21'3" |
| 6000 mm 20'0" | kg lb | | | | | *10 500 *22,850 | *10 500 *22,850 | *9900 | 7900 | *8550 *18,850 | 7700 17,200 | 7600 24'9" |
| 4500 mm 15'0" | kg lb | | | *14 700 *31,600 | *14 700 *31,600 | *11 700 *25,300 | 10 950 23,600 | *10 250 *22,300 | 7750 16,650 | *8550 *18,850 | 6700 14,750 | 8220 26'10" |
| 3000 mm 10'0" | kg lb | | | *18 000 *38,700 | 15 800 34,100 | *13 150 *28,450 | 10 400 22,400 | *10 900 *23,650 | 7500 16,100 | *8900 *19,550 | 6150 13,600 | 8520 27'11" |
| 1500 mm 5'0" | kg lb | | | *20 000 *43,200 | 14 950 32,250 | *14 400 *31,100 | 9900 21,350 | 10 800 23,200 | 7250 15,600 | 8850 19,500 | 6000 13,200 | 8550 28'0" |
| 0 mm 0'0" | kg lb | | | *20 200 *43,800 | 14 700 31,600 | 14 850 31,900 | 9650 20,800 | 10 600 22,800 | 7100 15,250 | 9150 20,150 | 6150 13,550 | 8310 27'3" |
| -1500 mm -5'0" | kg lb | *17 900 *40,650 | *17 900 *40,650 | *19 200 *41,600 | 14 700 31,600 | *14 500 *31,400 | 9600 20,650 | 10 600 22,800 | 7050 15,250 | 10 100 22,250 | 6750 14,900 | 7770 25'5" |
| -3000 mm -10'0" | kg lb | *21 950 *47,700 | *21 950 *47,700 | *16 900 *36,550 | 14 950 32,100 | *12 850 *27,600 | 9700 20,950 | | | *10 600 *23,350 | 8100 18,050 | 6870 22'4" |
| -4500 mm -15'0" | kg lb | | | *12 400 *26,150 | *12 400 *26,150 | | | | | *9850 *21,450 | *9850 *21,450 | 5410 17'5" |

Mass Boom Lift Capacities – Counterweight: 7.56 mt (16,700 lb) – without Bucket, Heavy Lift: On

Long Wide Undercarriage



| Reach mm ft/in | kg lb | 3000 mm/10'0" | | 4500 mm/15'0" | | 6000 mm/20'0" | | 7500 mm/25'0" | | mm ft/in | | |
|----------------------|----------|--------------------|--------------------|--------------------|--------------------|--------------------|--------------------|--------------------|----------------|--------------------|------------------|----------------|
| | | | | | | | | | | | | |
| 7500 mm 25'0" | kg lb | | | | | *10 150 *22,350 | *10 150 *22,350 | | | *8950 *19,900 | *8950 *19,900 | 6600 21'3" |
| 6000 mm 20'0" | kg lb | | | | | *10 500 *22,850 | *10 500 *22,850 | *9900 | 7950 | *8550 *18,850 | 7800 17,350 | 7600 24'9" |
| 4500 mm 15'0" | kg lb | | | *14 700 *31,600 | *14 700 *31,600 | *11 700 *25,300 | 11 050 23,800 | *10 250 *22,300 | 7800 16,800 | *8550 *18,850 | 6750 14,900 | 8220 26'10" |
| 3000 mm 10'0" | kg lb | | | *18 000 *38,700 | 15 950 34,400 | *13 150 *28,450 | 10 500 22,600 | *10 900 *23,650 | 7550 16,250 | *8900 *19,550 | 6200 13,700 | 8520 27'11" |
| 1500 mm 5'0" | kg lb | | | *20 000 *43,200 | 15 100 32,500 | *14 400 *31,100 | 10 000 21,550 | 10 900 23,400 | 7300 15,750 | 8950 19,700 | 6050 13,350 | 8550 28'0" |
| 0 mm 0'0" | kg lb | | | *20 200 *43,800 | 14 800 31,850 | *14 900 32,200 | 9750 20,950 | 10 700 23,050 | 7150 15,400 | 9250 20,350 | 6250 13,700 | 8310 27'3" |
| -1500 mm -5'0" | kg lb | *17 900 *40,650 | *17 900 *40,650 | *19 200 *41,600 | 14 850 31,850 | *14 500 *31,400 | 9650 20,800 | 10 700 23,000 | 7150 15,400 | 10 200 22,450 | 6800 15,050 | 7770 25'5" |
| -3000 mm -10'0" | kg lb | *21 950 *47,700 | *21 950 *47,700 | *16 900 *36,550 | 15 050 32,350 | *12 850 *27,600 | 9800 21,150 | | | *10 600 *23,350 | 8200 18,200 | 6870 22'4" |
| -4500 mm -15'0" | kg lb | | | *12 400 *26,150 | *12 400 *26,150 | | | | | *9850 *21,450 | *9850 *21,450 | 5410 17'5" |



ISO 10567:2007



* Indicates that the load is limited by hydraulic lifting capacity rather than tipping load. The above loads are in compliance with hydraulic excavator lift capacity standard ISO 10567:2007. They do not exceed 87% of hydraulic lifting capacity or 75% of tipping load. Weight of all lifting accessories must be deducted from the above lifting capacities. Lifting capacities are based on the machine standing on a firm, uniform supporting surface. The use of a work tool attachment point to handle/lift objects, could affect the machine lift performance.

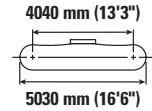
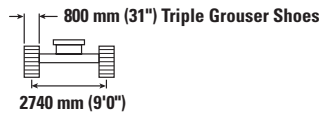
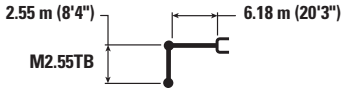
Lift capacity stays with ±5% for all available track shoes.

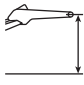






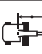




Always refer to the appropriate Operation and Maintenance Manual for specific product information.

340 Hydraulic Excavator Specifications

Mass Boom Lift Capacities – Counterweight: 7.56 mt (16,700 lb) – without Bucket, Heavy Lift: On

Long Wide Undercarriage



|  | | 3000 mm/10'0" | | 4500 mm/15'0" | | 6000 mm/20'0" | | 7500 mm/25'0" | |  | | mm ft/in |
|-----------------------------------------------------------------------------------|----------|-----------------------------------------------------------------------------------|-----------------------------------------------------------------------------------|-----------------------------------------------------------------------------------|-----------------------------------------------------------------------------------|-----------------------------------------------------------------------------------|-----------------------------------------------------------------------------------|------------------------------------------------------------------------------------|-------------------------------------------------------------------------------------|-------------------------------------------------------------------------------------|-------------------------------------------------------------------------------------|----------------|
| | |  |  |  |  |  |  |  |  |  |  | |
| 7500 mm 25'0" | kg lb | | | | | *10 150 *22,350 | *10 150 *22,350 | | | *8950 *19,900 | *8950 *19,900 | 6600 21'3" |
| 6000 mm 20'0" | kg lb | | | | | *10 500 *22,850 | *10 500 *22,850 | *9900 | 8100 | *8550 *18,850 | 7900 17,600 | 7600 24'9" |
| 4500 mm 15'0" | kg lb | | | *14 700 *31,600 | *14 700 *31,600 | *11 700 *25,300 | 11 200 24,100 | *10 250 *22,300 | 7950 17,050 | *8550 *18,850 | 6850 15,150 | 8220 26'10" |
| 3000 mm 10'0" | kg lb | | | *18 000 *38,700 | 16 200 34,900 | *13 150 *28,450 | 10 650 22,900 | *10 900 *23,650 | 7650 16,500 | *8900 *19,550 | 6300 13,900 | 8520 27'11" |
| 1500 mm 5'0" | kg lb | | | *20 000 *43,200 | 15 350 33,000 | *14 400 *31,100 | 10 150 21,900 | 11 050 23,800 | 7450 16,000 | 9100 20,050 | 6150 13,550 | 8550 28'0" |
| 0 mm 0'0" | kg lb | | | *20 200 *43,800 | 15 050 32,350 | *14 900 *32,250 | 9900 21,300 | 10 900 23,400 | 7250 15,650 | 9400 20,700 | 6350 13,950 | 8310 27'3" |
| -1500 mm -5'0" | kg lb | *17 900 *40,650 | *17 900 *40,650 | *19 200 *41,600 | 15 050 32,350 | *14 500 *31,400 | 9850 21,150 | 10 850 23,400 | 7250 15,650 | 10 350 22,850 | 6950 15,300 | 7770 25'5" |
| -3000 mm -10'0" | kg lb | *21 950 *47,700 | *21 950 *47,700 | *16 900 *36,550 | 15 300 32,850 | *12 850 *27,600 | 9950 21,500 | | | *10 600 *23,350 | 8350 18,500 | 6870 22'4" |
| -4500 mm -15'0" | kg lb | | | *12 400 *26,150 | *12 400 *26,150 | | | | | *9850 *21,450 | *9850 *21,450 | 5410 17'5" |



ISO 10567:2007



* Indicates that the load is limited by hydraulic lifting capacity rather than tipping load. The above loads are in compliance with hydraulic excavator lift capacity standard ISO 10567:2007. They do not exceed 87% of hydraulic lifting capacity or 75% of tipping load. Weight of all lifting accessories must be deducted from the above lifting capacities. Lifting capacities are based on the machine standing on a firm, uniform supporting surface. The use of a work tool attachment point to handle/lift objects, could affect the machine lift performance.

Lift capacity stays with ±5% for all available track shoes.

Always refer to the appropriate Operation and Maintenance Manual for specific product information.

340 Hydraulic Excavator Specifications

Bucket Specifications and Compatibility – Africa, Middle East and Eurasia

| | Linkage | Width | | Capacity | | Weight | | Fill % | Long Wide Undercarriage | | | | |
|---------------------------------------------|---------|-------|----|----------------|-----------------|--------|-------|-----------|-----------------------------------|----------------|-----------------|----------------------|--------|
| | | mm | in | m ³ | yd ³ | kg | lb | | 7.56 mt (16,700 lb) Counterweight | | | Mass M2.55 (8'4") | |
| | | | | | | | | | Reach HD | | | | |
| | | | | | | | | | | R2.8 (9'2") HD | R3.2 (10'6") HD | R3.9 (12'10") HD | |
| Pin-On (No Quick Coupler) | | | | | | | | | | | | | |
| General Duty | DB | 1650 | 65 | 2.12 | 2.77 | 1361 | 3,000 | 100 | ● | ● | ⊙ | | |
| | DB | 1800 | 71 | 2.36 | 3.09 | 1465 | 3,231 | 100 | ⊙ | ⊙ | ⊖ | | |
| | DB | 1750 | 69 | 2.50 | 3.27 | 1535 | 3,381 | 100 | ⊙ | ⊖ | ○ | | |
| Heavy Duty | DB | 1500 | 59 | 1.88 | 2.46 | 1653 | 3,641 | 100 | ● | ● | ⊙ | | |
| | DB | 1650 | 65 | 2.12 | 2.77 | 1741 | 3,834 | 100 | ● | ⊙ | ⊖ | | |
| | DB | 1800 | 72 | 2.36 | 3.08 | 1774 | 3,911 | 100 | ⊙ | ⊖ | ○ | | |
| | DB | 1750 | 69 | 2.50 | 3.27 | 1851 | 4,077 | 100 | ⊖ | ⊖ | ○ | | |
| Severe Duty – V Edge | DB | 1500 | 59 | 1.91 | 2.50 | 1666 | 3,672 | 90 | ● | ● | ⊙ | | |
| | DB | 1650 | 66 | 2.15 | 2.81 | 1802 | 3,972 | 90 | ● | ● | ⊖ | | |
| | DB | 1800 | 71 | 2.30 | 3.01 | 1991 | 4,385 | 90 | ⊙ | ⊙ | ⊖ | | |
| General Duty | TB | 1800 | 71 | 2.60 | 3.40 | 2119 | 4,671 | 100 | | | | ⊙ | |
| | TB | 2050 | 81 | 3.00 | 3.92 | 2492 | 5,488 | 100 | | | | ⊖ | |
| Heavy Duty | TB | 1750 | 69 | 2.50 | 3.27 | 2258 | 4,978 | 100 | | | | ⊙ | |
| | TB | 1850 | 72 | 2.69 | 3.52 | 2387 | 5,262 | 100 | | | | ⊖ | |
| | TB | 1900 | 75 | 2.80 | 3.66 | 2548 | 5,612 | 100 | | | | ⊖ | |
| Severe Duty | TB | 1600 | 63 | 2.20 | 2.88 | 2416 | 5,321 | 90 | | | | ● | |
| | TB | 1800 | 71 | 2.60 | 3.40 | 2618 | 5,766 | 90 | | | | ⊙ | |
| Severe Duty – V Edge | TB | 1650 | 66 | 2.41 | 3.15 | 2367 | 5,218 | 90 | | | | ● | |
| | TB | 1700 | 67 | 2.41 | 3.15 | 2597 | 5,720 | 90 | | | | ⊙ | |
| | TB | 1900 | 75 | 2.78 | 3.64 | 2844 | 6,264 | 90 | | | | ⊖ | |
| | TB | 1900 | 75 | 2.80 | 3.66 | 2601 | 5,728 | 90 | | | | ⊖ | |
| Extreme Duty – V Edge Power | TB | 1850 | 73 | 2.50 | 3.27 | 2931 | 6,455 | 90 | | | | ⊖ | |
| Maximum load with pin-on (payload + bucket) | | | | | | | | | kg | 6120 | 5780 | 5040 | 6730 |
| | | | | | | | | | lb | 13,492 | 12,743 | 11,111 | 14,837 |

The above loads are in compliance with hydraulic excavator standard EN474-5:2006 + A3:2013, they do not exceed 87% of hydraulic lifting capacity or 75% of tipping capacity with front linkage fully extended at ground line with bucket curled.

Capacity based on ISO 7451:2007.

Bucket weight with General Duty tips.

Maximum Material Density:

- 2100 kg/m³ (3,500 lb/yd³)
- ⊙ 1800 kg/m³ (3,000 lb/yd³)
- ⊖ 1500 kg/m³ (2,500 lb/yd³)
- 1200 kg/m³ (2,000 lb/yd³)

Caterpillar recommends using appropriate work tools to maximize the value customers receive from our products. Use of work tools, including buckets, which are outside of Caterpillar's recommendations or specifications for weight, dimensions, flows, pressures, etc. may result in less-than-optimal performance, including but not limited to reductions in production, stability, reliability, and component durability. Improper use of a work tool resulting in sweeping, prying, twisting and/or catching of heavy loads will reduce the life of the boom and stick.

(continued on next page)

340 Hydraulic Excavator Specifications

Bucket Specifications and Compatibility – Africa, Middle East and Eurasia (continued)

| | Linkage | Long Wide Undercarriage | | | | | | | | | | |
|----------------------------------------------|---------|-------------------------|----|----------------|-----------------|--------|-------|----------------|-----------------------------------|------------------|--------------|--------|
| | | Width | | Capacity | | Weight | | Fill | 7.56 mt (16,700 lb) Counterweight | | | Mass |
| | | mm | in | m ³ | yd ³ | kg | lb | | Reach HD | | | |
| | | | | | | | | R2.8 (9'2") HD | R3.2 (10'6") HD | R3.9 (12'10") HD | M2.55 (8'4") | |
| With Cat Pin Grabber Coupler | | | | | | | | | | | | |
| General Duty | DB | 1650 | 65 | 2.12 | 2.77 | 1361 | 3,000 | 100 | ⊙ | ⊙ | ○ | |
| | DB | 1800 | 71 | 2.36 | 3.09 | 1465 | 3,231 | 100 | ⊖ | ⊖ | ○ | |
| | DB | 1750 | 69 | 2.50 | 3.27 | 1535 | 3,381 | 100 | ⊖ | ○ | ◇ | |
| Heavy Duty | DB | 1500 | 59 | 1.88 | 2.46 | 1653 | 3,641 | 100 | ● | ⊙ | ⊖ | |
| | DB | 1650 | 65 | 2.12 | 2.77 | 1741 | 3,834 | 100 | ⊙ | ⊖ | ○ | |
| | DB | 1800 | 72 | 2.36 | 3.08 | 1774 | 3,911 | 100 | ⊖ | ○ | ◇ | |
| | DB | 1750 | 69 | 2.50 | 3.27 | 1851 | 4,077 | 100 | ⊖ | ○ | ◇ | |
| Severe Duty – V Edge | DB | 1500 | 59 | 1.91 | 2.50 | 1666 | 3,672 | 90 | ● | ⊙ | ⊖ | |
| | DB | 1650 | 66 | 2.15 | 2.81 | 1802 | 3,972 | 90 | ⊙ | ⊖ | ○ | |
| | DB | 1800 | 71 | 2.30 | 3.01 | 1991 | 4,385 | 90 | ⊖ | ⊖ | ◇ | |
| General Duty | TB | 1800 | 71 | 2.60 | 3.40 | 2119 | 4,671 | 100 | | | | ○ |
| | TB | 2050 | 81 | 3.00 | 3.92 | 2492 | 5,488 | 100 | | | | ◇ |
| Heavy Duty | TB | 1750 | 69 | 2.50 | 3.27 | 2258 | 4,978 | 100 | | | | ○ |
| | TB | 1850 | 72 | 2.69 | 3.52 | 2387 | 5,262 | 100 | | | | ○ |
| | TB | 1900 | 75 | 2.80 | 3.66 | 2548 | 5,612 | 100 | | | | ◇ |
| Severe Duty | TB | 1600 | 63 | 2.20 | 2.88 | 2416 | 5,321 | 90 | | | | ⊖ |
| | TB | 1800 | 71 | 2.60 | 3.40 | 2618 | 5,766 | 90 | | | | ○ |
| Severe Duty – V Edge | TB | 1650 | 66 | 2.41 | 3.15 | 2367 | 5,218 | 90 | | | | ⊖ |
| | TB | 1700 | 67 | 2.41 | 3.15 | 2597 | 5,720 | 90 | | | | ○ |
| | TB | 1900 | 75 | 2.78 | 3.64 | 2844 | 6,264 | 90 | | | | ◇ |
| | TB | 1900 | 75 | 2.80 | 3.66 | 2601 | 5,728 | 90 | | | | ○ |
| Extreme Duty – V Edge Power | TB | 1850 | 73 | 2.50 | 3.27 | 2931 | 6,455 | 90 | | | | ○ |
| Maximum load with coupler (payload + bucket) | | | | | | | | kg | 5422 | 5082 | 4342 | 5677 |
| | | | | | | | | lb | 11,954 | 11,205 | 9,573 | 12,515 |

Maximum Material Density:

- 2100 kg/m³ (3,500 lb/yd³)
- ⊙ 1800 kg/m³ (3,000 lb/yd³)
- ⊖ 1500 kg/m³ (2,500 lb/yd³)
- 1200 kg/m³ (2,000 lb/yd³)
- ◇ 900 kg/m³ (1,500 lb/yd³)

The above loads are in compliance with hydraulic excavator standard EN474-5:2006 + A3:2013, they do not exceed 87% of hydraulic lifting capacity or 75% of tipping capacity with front linkage fully extended at ground line with bucket curled.

Capacity based on ISO 7451:2007.

Bucket weight with General Duty tips.

Caterpillar recommends using appropriate work tools to maximize the value customers receive from our products. Use of work tools, including buckets, which are outside of Caterpillar's recommendations or specifications for weight, dimensions, flows, pressures, etc. may result in less-than-optimal performance, including but not limited to reductions in production, stability, reliability, and component durability. Improper use of a work tool resulting in sweeping, prying, twisting and/or catching of heavy loads will reduce the life of the boom and stick.

(continued on next page)

340 Hydraulic Excavator Specifications

Bucket Specifications and Compatibility – Africa, Middle East and Eurasia (continued)

| | Linkage | Width | | Capacity | | Weight | | Fill | Long Wide Undercarriage | | | |
|----------------------------------------------|---------|-----------------------------------|----|----------------|-----------------|--------|-------|------|-------------------------|----------------|-----------------|------------------|
| | | 7.56 mt (16,700 lb) Counterweight | | | | | | | Reach HD | | | Mass |
| | | mm | in | m ³ | yd ³ | kg | lb | | % | R2.8 (9'2") HD | R3.2 (10'6") HD | R3.9 (12'10") HD |
| With CW Quick Coupler | | | | | | | | | | | | |
| Heavy Duty | DB CW45 | 1650 | 65 | 2.12 | 2.77 | 1703 | 3,751 | 100 | ⊙ | ⊖ | ○ | |
| Maximum load with coupler (payload + bucket) | | | | | | | | kg | 5645 | 5305 | 4565 | 6235 |
| | | | | | | | | lb | 12,445 | 11,696 | 10,064 | 13,746 |

The above loads are in compliance with hydraulic excavator standard EN474-5:2006 + A3:2013, they do not exceed 87% of hydraulic lifting capacity or 75% of tipping capacity with front linkage fully extended at ground line with bucket curled.

Capacity based on ISO 7451:2007.

Bucket weight with General Duty tips.

Maximum Material Density:

- ⊙ 1800 kg/m³ (3,000 lb/yd³)
- ⊖ 1500 kg/m³ (2,500 lb/yd³)
- 1200 kg/m³ (2,000 lb/yd³)

Caterpillar recommends using appropriate work tools to maximize the value customers receive from our products. Use of work tools, including buckets, which are outside of Caterpillar's recommendations or specifications for weight, dimensions, flows, pressures, etc. may result in less-than-optimal performance, including but not limited to reductions in production, stability, reliability, and component durability. Improper use of a work tool resulting in sweeping, prying, twisting and/or catching of heavy loads will reduce the life of the boom and stick.

340 Hydraulic Excavator Specifications

Bucket Specifications and Compatibility – Indonesia

| | Linkage | Long Wide Undercarriage | | | | | | | | | |
|---------------------------------------------|---------|-----------------------------------|-----------------|----------|------|--------|-----------------|------------------|--------------|--------|------|
| | | 7.56 mt (16,700 lb) Counterweight | | | | | | | | | |
| | | Width | | Capacity | | Weight | | Fill | Reach HD | | Mass |
| mm | in | m ³ | yd ³ | kg | lb | % | R3.2 (10'6") HD | R3.9 (12'10") HD | M2.55 (8'4") | | |
| Pin-On (No Quick Coupler) | | | | | | | | | | | |
| Heavy Duty | DB | 1500 | 61 | 1.88 | 2.46 | 1620 | 3,571 | 100 | ● | ⊙ | |
| | DB | 1550 | 61 | 1.88 | 2.46 | 1632 | 3,594 | 100 | ● | ⊙ | |
| | DB | 1650 | 67 | 2.12 | 2.77 | 1718 | 3,787 | 100 | ⊙ | ⊖ | |
| | DB | 1700 | 67 | 2.12 | 2.77 | 1726 | 3,801 | 100 | ⊙ | ⊖ | |
| | DB | 1800 | 73 | 2.36 | 3.08 | 1783 | 3,926 | 100 | ⊖ | ○ | |
| | DB | 1650 | 65 | 2.41 | 3.15 | 1800 | 3,964 | 100 | ⊖ | ○ | |
| | DB | 1700 | 67 | 2.20 | 2.88 | 1794 | 3,951 | 100 | ⊙ | ⊖ | |
| | DB | 1750 | 69 | 2.60 | 3.40 | 1932 | 4,255 | 100 | ⊖ | ○ | |
| General Duty | TB | 1800 | 71 | 2.60 | 3.40 | 2282 | 5,025 | 100 | | | ⊙ |
| | TB | 2050 | 81 | 3.00 | 3.92 | 2492 | 5,488 | 100 | | | ⊖ |
| Heavy Duty | TB | 1750 | 69 | 2.50 | 3.27 | 2420 | 5,329 | 100 | | | ⊙ |
| | TB | 1850 | 73 | 2.69 | 3.52 | 2639 | 5,811 | 100 | | | ⊖ |
| | TB | 1900 | 75 | 2.80 | 3.66 | 2548 | 5,612 | 100 | | | ⊖ |
| Severe Duty | TB | 1600 | 63 | 2.20 | 2.88 | 2390 | 5,268 | 90 | | | ● |
| | TB | 1750 | 69 | 2.60 | 3.40 | 2430 | 5,352 | 90 | | | ⊙ |
| | TB | 1800 | 71 | 2.60 | 3.40 | 2618 | 5,766 | 90 | | | ⊙ |
| Severe Duty – V Edge | TB | 1650 | 66 | 2.41 | 3.15 | 2367 | 5,218 | 90 | | | ● |
| | TB | 1900 | 75 | 2.80 | 3.66 | 2601 | 5,728 | 90 | | | ⊖ |
| Maximum load with pin-on (payload + bucket) | | | | | | | kg | 5780 | 5040 | 6730 | |
| | | | | | | | lb | 12,743 | 11,111 | 14,837 | |

The above loads are in compliance with hydraulic excavator standard EN474-5:2006 + A3:2013, they do not exceed 87% of hydraulic lifting capacity or 75% of tipping capacity with front linkage fully extended at ground line with bucket curled.

Capacity based on ISO 7451:2007.

Bucket weight with General Duty tips.

Maximum Material Density:

- 2100 kg/m³ (3,500 lb/yd³)
- ⊙ 1800 kg/m³ (3,000 lb/yd³)
- ⊖ 1500 kg/m³ (2,500 lb/yd³)
- 1200 kg/m³ (2,000 lb/yd³)

Caterpillar recommends using appropriate work tools to maximize the value customers receive from our products. Use of work tools, including buckets, which are outside of Caterpillar's recommendations or specifications for weight, dimensions, flows, pressures, etc. may result in less-than-optimal performance, including but not limited to reductions in production, stability, reliability, and component durability. Improper use of a work tool resulting in sweeping, prying, twisting and/or catching of heavy loads will reduce the life of the boom and stick.

(continued on next page)

340 Hydraulic Excavator Specifications

Bucket Specifications and Compatibility – Indonesia (continued)

| | Linkage | Long Wide Undercarriage | | | | | | | | | |
|----------------------------------------------|---------|-----------------------------------|-----------------|----------|------|--------|-----------------|------------------|--------------|--------|------|
| | | 7.56 mt (16,700 lb) Counterweight | | | | | | | | | |
| | | Width | | Capacity | | Weight | | Fill | Reach HD | | Mass |
| mm | in | m ³ | yd ³ | kg | lb | % | R3.2 (10'6") HD | R3.9 (12'10") HD | M2.55 (8'4") | | |
| With Cat Pin Grabber Coupler | | | | | | | | | | | |
| Heavy Duty | DB | 1500 | 61 | 1.88 | 2.46 | 1620 | 3,571 | 100 | ⊙ | ⊖ | |
| | DB | 1550 | 61 | 1.88 | 2.46 | 1632 | 3,594 | 100 | ⊙ | ⊖ | |
| | DB | 1650 | 67 | 2.12 | 2.77 | 1718 | 3,787 | 100 | ⊖ | ○ | |
| | DB | 1700 | 67 | 2.12 | 2.77 | 1726 | 3,801 | 100 | ⊖ | ○ | |
| | DB | 1800 | 73 | 2.36 | 3.08 | 1783 | 3,926 | 100 | ○ | ◇ | |
| | DB | 1650 | 65 | 2.41 | 3.15 | 1800 | 3,964 | 100 | ○ | ◇ | |
| | DB | 1700 | 67 | 2.20 | 2.88 | 1794 | 3,951 | 100 | ⊖ | ○ | |
| | DB | 1750 | 69 | 2.60 | 3.40 | 1932 | 4,255 | 100 | ○ | ◇ | |
| General Duty | TB | 1800 | 71 | 2.60 | 3.40 | 2282 | 5,025 | 100 | | | ○ |
| | TB | 2050 | 81 | 3.00 | 3.92 | 2492 | 5,488 | 100 | | | ◇ |
| Heavy Duty | TB | 1750 | 69 | 2.50 | 3.27 | 2420 | 5,329 | 100 | | | ○ |
| | TB | 1850 | 73 | 2.69 | 3.52 | 2639 | 5,811 | 100 | | | ◇ |
| | TB | 1900 | 75 | 2.80 | 3.66 | 2548 | 5,612 | 100 | | | ◇ |
| Severe Duty | TB | 1600 | 63 | 2.20 | 2.88 | 2390 | 5,268 | 90 | | | ⊖ |
| | TB | 1750 | 69 | 2.60 | 3.40 | 2430 | 5,352 | 90 | | | ○ |
| | TB | 1800 | 71 | 2.60 | 3.40 | 2618 | 5,766 | 90 | | | ○ |
| Severe Duty – V Edge | TB | 1650 | 66 | 2.41 | 3.15 | 2367 | 5,218 | 90 | | | ⊖ |
| | TB | 1900 | 75 | 2.80 | 3.66 | 2601 | 5,728 | 90 | | | ○ |
| Maximum load with coupler (payload + bucket) | | | | | | | kg | 5082 | 4342 | 5677 | |
| | | | | | | | lb | 11,205 | 9,573 | 12,515 | |

The above loads are in compliance with hydraulic excavator standard EN474-5:2006 + A3:2013, they do not exceed 87% of hydraulic lifting capacity or 75% of tipping capacity with front linkage fully extended at ground line with bucket curled.

Capacity based on ISO 7451:2007.

Bucket weight with General Duty tips.

Maximum Material Density:

- ⊙ 1800 kg/m³ (3,000 lb/yd³)
- ⊖ 1500 kg/m³ (2,500 lb/yd³)
- 1200 kg/m³ (2,000 lb/yd³)
- ◇ 900 kg/m³ (1,500 lb/yd³)

Caterpillar recommends using appropriate work tools to maximize the value customers receive from our products. Use of work tools, including buckets, which are outside of Caterpillar's recommendations or specifications for weight, dimensions, flows, pressures, etc. may result in less-than-optimal performance, including but not limited to reductions in production, stability, reliability, and component durability. Improper use of a work tool resulting in sweeping, prying, twisting and/or catching of heavy loads will reduce the life of the boom and stick.

340 Hydraulic Excavator Specifications

Attachments Offering Guide – Africa, Middle East

Not all Attachments are available in all regions. Consult your Cat dealer for configurations available in your region.

Match

* Working range front only

No Match

PIN-ON ATTACHMENTS

| Undercarriage | | Long Wide | | | | | | |
|------------------------------------|------------------------------------|---------------------|----------------------|-----------------------|----------------------|-----------------------|------------------------|------------------|
| Counterweight | | 7.56 mt (16,700 lb) | | | | | | |
| Boom Type | | Reach HD | | | Reach HD+ | | | Mass |
| Stick Length | | 2.80 m HD (9'2") | 3.20 m HD (10'6") | 3.90 m HD (12'10") | 2.80 m HD+ (9'2") | 3.20 m HD+ (10'6") | 3.90 m HD+ (12'10") | 2.55 m (8'4") |
| Hydraulic Hammers | H140 GC | ✓ | ✓ | ✓ | ✓ | ✓ | ✓ | ✓ |
| | H140 GC-Side Mount | ✓ | ✓ | ✓ | ✓ | ✓ | ✓ | |
| | H140 GC S | ✓ | ✓ | ✓ | ✓ | ✓ | ✓ | ✓ |
| | H140 S | ✓ | ✓ | ✓ | ✓ | ✓ | ✓ | ✓ |
| | H160 GC | ✓ | ✓ | ✓ | ✓ | ✓ | ✓* | ✓ |
| | H160 GC-Side Mount | ✓ | ✓ | ✓ | ✓ | ✓ | ✓ | ✓ |
| | H160 GC S | ✓ | ✓ | ✓ | ✓ | ✓ | ✓ | ✓ |
| | H160 S | ✓ | ✓ | ✓ | ✓ | ✓ | ✓ | ✓ |
| | H180 GC | ✓ | ✓* | | ✓ | ✓ | | ✓ |
| | H180 GC-Side Mount | ✓ | ✓ | | ✓ | ✓* | | ✓ |
| | H180 GC S | ✓ | ✓ | ✓ | ✓ | ✓ | ✓ | ✓ |
| | H180 S | ✓ | ✓ | ✓ | ✓ | ✓ | ✓ | ✓ |
| Multi-Processors | MP332 Concrete Cutter Jaw | ✓ | ✓ | ✓ | ✓ | ✓ | ✓ | |
| | MP332 Demolition Jaw | ✓ | ✓ | ✓ | ✓ | ✓ | ✓ | |
| | MP332 Pulverizer Jaw | ✓ | ✓ | ✓ | ✓ | ✓ | ✓ | |
| | MP332 Shear Jaw | ✓ | ✓ | ✓ | ✓ | ✓ | ✓ | |
| | MP332 Tank Shear Jaw | ✓ | ✓ | ✓ | ✓ | ✓ | ✓ | |
| | MP332 Universal Jaw | ✓ | ✓ | ✓ | ✓ | ✓ | ✓ | |
| | MP332 Concrete Cutter Jaw-Flat Top | ✓ | ✓ | ✓ | ✓ | ✓ | ✓ | |
| | MP332 Demolition Jaw-Flat Top | ✓ | ✓ | ✓ | ✓ | ✓ | ✓ | |
| | MP332 Pulverizer Jaw-Flat Top | ✓ | ✓ | ✓ | ✓ | ✓ | ✓ | |
| | MP332 Shear Jaw-Flat Top | ✓ | ✓ | ✓ | ✓ | ✓ | ✓ | |
| | MP332 Tank Shear Jaw-Flat Top | ✓ | ✓ | ✓* | ✓ | ✓ | ✓* | |
| | MP332 Universal Jaw-Flat Top | ✓ | ✓ | ✓ | ✓ | ✓ | ✓ | |
| Demolition and Sorting Grapples | G332 | ✓ | ✓ | ✓ | ✓ | ✓ | ✓ | |
| | G345 | ✓ | ✓ | ✓ | ✓ | ✓ | ✓ | |
| | G345 Flat Top | ✓ | ✓ | ✓ | ✓ | ✓ | ✓ | |
| Mobile Scrap and Demolition Shears | S3035-Flat Top | ✓ | ✓ | ✓ | ✓ | ✓ | ✓ | |
| Pulverizers | P232 Secondary Pulverizer | ✓ | ✓ | ✓ | ✓ | ✓ | ✓ | ✓ |
| | P332 Primary Pulverizer | ✓ | ✓ | ✓ | ✓ | ✓ | ✓ | |
| | P332 Primary Pulverizer-Flat Top | ✓ | ✓ | ✓ | ✓ | ✓ | ✓ | |
| Compactors (Vibratory Plate) | CVP110 | ✓ | ✓ | ✓ | ✓ | ✓ | ✓ | ✓ |

(continued on next page)

340 Hydraulic Excavator Specifications

Attachments Offering Guide – Africa, Middle East (continued)

Not all Attachments are available in all regions. Consult your Cat dealer for configurations available in your region.

No Match

1800 kg/m³ (3,000 lb/yd³)

1200 kg/m³ (2,000 lb/yd³)

PIN-ON ATTACHMENTS (continued)

| Undercarriage | | Long Wide | | | | | | |
|----------------------|-------------|---------------------|----------------------|-----------------------|----------------------|-----------------------|------------------------|------------------|
| Counterweight | | 7.56 mt (16,700 lb) | | | | | | |
| Boom Type | | Reach HD | | | Reach HD+ | | Mass | |
| Stick Length | | 2.80 m HD (9'2") | 3.20 m HD (10'6") | 3.90 m HD (12'10") | 2.80 m HD+ (9'2") | 3.20 m HD+ (10'6") | 3.90 m HD+ (12'10") | 2.55 m (8'4") |
| Orange Peel Grapples | GSH440-950 | ● | ● | ● | ● | ● | ● | |
| | GSH440-1150 | ● | ● | ● | ● | ● | ● | |
| | GSH440-1550 | ● | ● | ○ | ● | ● | ○ | |
| | GSH455-1000 | ● | ● | ● | ● | ● | ● | |
| | GSH455-1500 | ● | ○ | ○ | ● | ○ | ○ | |
| | GSH455-2000 | ○ | ○ | | ○ | ○ | | |
| | GSH555-1000 | ● | ● | ○ | ● | ● | ○ | |
| | GSH555-1500 | ○ | ○ | | ○ | ○ | | |
| | GSM50-1000 | ● | ● | ○ | ● | ● | ○ | |
| | GSM50-1250 | ● | ○ | | ○ | ○ | | |
| | GSM50-1500 | ○ | ○ | | ○ | | | |
| Clamshell Grapples | CTV20-1300 | ● | ● | ● | ● | ● | ● | |
| | CTV20-1500 | ● | ● | ● | ● | ● | ● | |
| | CTV20-1700 | ● | ● | ○ | ● | ● | ○ | |
| | CTV20-1900 | ● | ○ | ○ | ● | ○ | ○ | |
| | CTV20-2300 | ○ | ○ | | ○ | ○ | | |
| | CTV20-2700 | ○ | | | | | | |
| | CTV30-1700 | ● | ○ | ○ | ○ | ○ | ○ | |
| | CTV30-1900 | ○ | ○ | | ○ | ○ | | |
| | CTV30-2300 | ○ | | | ○ | | | |

(continued on next page)

340 Hydraulic Excavator Specifications

Attachments Offering Guide – Africa, Middle East (continued)

Not all Attachments are available in all regions. Consult your Cat dealer for configurations available in your region.

Match

* Working range front only

No Match

CAT PIN GRABBER COUPLER ATTACHMENTS

| Undercarriage | | Long Wide | | | | | | |
|------------------------------------|------------------------------------|---------------------|----------------------|-----------------------|----------------------|-----------------------|------------------------|------------------|
| Counterweight | | 7.56 mt (16,700 lb) | | | | | | |
| Boom Type | | Reach HD | | | Reach HD+ | | | Mass |
| Stick Length | | 2.80 m HD (9'2") | 3.20 m HD (10'6") | 3.90 m HD (12'10") | 2.80 m HD+ (9'2") | 3.20 m HD+ (10'6") | 3.90 m HD+ (12'10") | 2.55 m (8'4") |
| Hydraulic Hammers | H140 GC | ✓ | ✓ | ✓* | ✓ | ✓ | ✓* | ✓ |
| | H140 GC-Side Mount | ✓ | ✓ | ✓ | | ✓ | ✓ | |
| | H140 GC S | ✓ | ✓ | ✓ | ✓ | ✓ | ✓ | ✓ |
| | H140 S | ✓ | ✓ | ✓ | ✓ | ✓ | ✓ | ✓ |
| | H160 GC | ✓ | ✓* | ✓ | ✓ | ✓* | ✓ | ✓ |
| | H160 GC-Side Mount | ✓ | ✓ | | ✓ | ✓ | | ✓ |
| | H160 GC S | ✓ | ✓ | ✓ | ✓ | ✓ | ✓ | ✓ |
| | H160 S | ✓ | ✓ | ✓ | ✓ | ✓ | ✓ | ✓ |
| | H180 GC | ✓* | | | ✓* | | | ✓* |
| | H180 GC S | ✓ | ✓ | | ✓ | ✓* | | ✓ |
| | H180 S | ✓ | ✓* | | ✓ | ✓* | | ✓ |
| Multi-Processors | MP332 Concrete Cutter Jaw | ✓ | ✓ | ✓ | ✓ | ✓ | ✓* | |
| | MP332 Demolition Jaw | ✓ | ✓ | ✓* | ✓ | ✓ | ✓* | |
| | MP332 Pulverizer Jaw | ✓ | ✓ | ✓* | ✓ | ✓ | ✓* | |
| | MP332 Shear Jaw | ✓ | ✓ | ✓ | ✓ | ✓ | ✓* | |
| | MP332 Tank Shear Jaw | ✓ | ✓ | | ✓ | ✓* | | |
| | MP332 Universal Jaw | ✓ | ✓ | ✓* | ✓ | ✓ | ✓* | |
| | MP332 Concrete Cutter Jaw-Flat Top | ✓ | ✓ | | ✓ | ✓ | | |
| | MP332 Demolition Jaw-Flat Top | ✓ | ✓ | | ✓ | ✓* | | |
| | MP332 Pulverizer Jaw-Flat Top | ✓ | ✓ | | ✓ | ✓* | | |
| | MP332 Shear Jaw-Flat Top | ✓ | ✓ | | ✓ | ✓ | | |
| | MP332 Tank Shear Jaw-Flat Top | ✓* | | | ✓* | | | |
| | MP332 Universal Jaw-Flat Top | ✓ | ✓ | | ✓ | ✓* | | |
| Demolition and Sorting Grapples | G332 | ✓ | ✓ | ✓ | ✓ | ✓ | ✓ | |
| | G345 | ✓ | ✓ | ✓* | ✓ | ✓ | ✓* | |
| | G345 Flat Top | ✓ | ✓ | | ✓ | ✓ | | |
| Mobile Scrap and Demolition Shears | S3035-Flat Top | ✓ | ✓ | ✓ | ✓ | ✓ | ✓* | |
| Pulverizers | P232 Secondary Pulverizer | ✓ | ✓ | | ✓ | ✓ | | ✓ |
| | P332 Primary Pulverizer | ✓ | ✓ | ✓* | ✓ | ✓ | ✓* | |
| | P332 Primary Pulverizer-Flat Top | ✓ | ✓ | | ✓ | ✓ | | |
| Compactors (Vibratory Plate) | CVP110 | ✓ | ✓ | ✓ | ✓ | ✓ | ✓ | ✓ |

(continued on next page)

340 Hydraulic Excavator Specifications

Attachments Offering Guide – Africa, Middle East (continued)

Not all Attachments are available in all regions. Consult your Cat dealer for configurations available in your region.

Match

* Working range front only

No Match

CW-45s DEDICATED COUPLER ATTACHMENTS

| Undercarriage | | Long Wide | | | | | | |
|------------------------------------|------------------------------------|---------------------|----------------------|-----------------------|----------------------|-----------------------|------------------------|------------------|
| Counterweight | | 7.56 mt (16,700 lb) | | | | | | |
| Boom Type | | Reach HD | | | Reach HD+ | | | Mass |
| Stick Length | | 2.80 m HD (9'2") | 3.20 m HD (10'6") | 3.90 m HD (12'10") | 2.80 m HD+ (9'2") | 3.20 m HD+ (10'6") | 3.90 m HD+ (12'10") | 2.55 m (8'4") |
| Hydraulic Hammers | H140 GC | ✓ | ✓ | ✓* | ✓ | ✓ | ✓* | ✓ |
| | H140 GC S | ✓ | ✓ | ✓ | ✓ | ✓ | ✓ | ✓ |
| | H140 S | ✓ | ✓ | ✓ | ✓ | ✓ | ✓ | ✓ |
| | H160 GC | ✓ | ✓* | ✓ | ✓ | ✓ | ✓ | ✓ |
| | H160 GC S | ✓ | ✓ | ✓ | ✓ | ✓ | ✓ | ✓ |
| | H160 S | ✓ | ✓ | ✓ | ✓ | ✓ | ✓ | ✓ |
| | H180 GC | ✓* | | | | | | ✓ |
| | H180 GC S | ✓ | ✓* | | ✓ | ✓* | | ✓ |
| | H180 S | ✓ | ✓* | | ✓ | ✓* | | ✓ |
| Multi-Processors | MP332 Concrete Cutter Jaw | ✓ | ✓ | ✓ | ✓ | ✓ | ✓ | |
| | MP332 Demolition Jaw | ✓ | ✓ | ✓ | ✓ | ✓ | ✓* | |
| | MP332 Pulverizer Jaw | ✓ | ✓ | ✓ | ✓ | ✓ | ✓* | |
| | MP332 Shear Jaw | ✓ | ✓ | ✓ | ✓ | ✓ | ✓ | |
| | MP332 Tank Shear Jaw | ✓ | ✓ | | ✓ | ✓ | | |
| | MP332 Universal Jaw | ✓ | ✓ | ✓ | ✓ | ✓ | ✓* | |
| | MP332 Concrete Cutter Jaw-Flat Top | ✓ | ✓ | ✓* | ✓ | ✓ | ✓* | |
| | MP332 Demolition Jaw-Flat Top | ✓ | ✓ | | ✓ | ✓ | | |
| | MP332 Pulverizer Jaw-Flat Top | ✓ | ✓ | | ✓ | ✓ | | |
| | MP332 Shear Jaw-Flat Top | ✓ | ✓ | ✓* | ✓ | ✓ | ✓* | |
| | MP332 Tank Shear Jaw-Flat Top | ✓ | ✓* | | ✓ | ✓* | | |
| | MP332 Universal Jaw-Flat Top | ✓ | ✓ | | ✓ | ✓ | | |
| Demolition and Sorting Grapples | G332 | ✓ | ✓ | ✓ | ✓ | ✓ | ✓ | |
| | G345 | ✓ | ✓ | ✓* | ✓ | ✓ | ✓* | |
| | G345 Flat Top | ✓ | ✓ | ✓* | ✓ | ✓ | | |
| Mobile Scrap and Demolition Shears | S3035-Flat Top | ✓ | ✓ | ✓ | ✓ | ✓ | ✓ | |
| Pulverizers | P232 Secondary Pulverizer | ✓ | ✓ | | ✓ | ✓ | | ✓ |
| | P332 Primary Pulverizer | ✓ | ✓ | ✓ | ✓ | ✓ | ✓ | |
| | P332 Primary Pulverizer-Flat Top | ✓ | ✓ | | ✓ | ✓ | | |
| Compactors (Vibratory Plate) | CVP110 | ✓ | ✓ | ✓ | ✓ | ✓ | ✓ | ✓ |

(continued on next page)

340 Hydraulic Excavator Specifications

Attachments Offering Guide – Africa, Middle East (continued)

Not all Attachments are available in all regions. Consult your Cat dealer for configurations available in your region.

Match

* Working range front only

No Match

CW-45 DEDICATED COUPLER ATTACHMENTS

| Undercarriage | | Long Wide | | | | | | |
|------------------------------------|------------------------------------|---------------------|----------------------|-----------------------|----------------------|-----------------------|------------------------|------------------|
| Counterweight | | 7.56 mt (16,700 lb) | | | | | | |
| Boom Type | | Reach HD | | | Reach HD+ | | | Mass |
| Stick Length | | 2.80 m HD (9'2") | 3.20 m HD (10'6") | 3.90 m HD (12'10") | 2.80 m HD+ (9'2") | 3.20 m HD+ (10'6") | 3.90 m HD+ (12'10") | 2.55 m (8'4") |
| Hydraulic Hammers | H140 GC | ✓ | ✓ | ✓* | ✓ | ✓ | ✓ | ✓ |
| | H140 GC S | ✓ | ✓ | ✓ | ✓ | ✓ | ✓ | ✓ |
| | H140 S | ✓ | ✓ | ✓ | ✓ | ✓ | ✓ | ✓ |
| | H160 GC | ✓ | ✓* | ✓ | ✓ | ✓* | ✓ | ✓ |
| | H160 GC S | ✓ | ✓ | ✓ | ✓ | ✓ | ✓ | ✓ |
| | H160 S | ✓ | ✓ | ✓ | ✓ | ✓ | ✓ | ✓ |
| | H180 GC | ✓* | | | ✓* | | | ✓ |
| | H180 GC S | ✓ | ✓ | | ✓ | ✓* | | ✓ |
| | H180 S | ✓ | ✓* | | ✓ | ✓* | | ✓ |
| Multi-Processors | MP332 Concrete Cutter Jaw | ✓ | ✓ | ✓ | ✓ | ✓ | ✓ | |
| | MP332 Demolition Jaw | ✓ | ✓ | ✓ | ✓ | ✓ | ✓* | |
| | MP332 Pulverizer Jaw | ✓ | ✓ | ✓ | ✓ | ✓ | ✓* | |
| | MP332 Shear Jaw | ✓ | ✓ | ✓ | ✓ | ✓ | ✓ | |
| | MP332 Tank Shear Jaw | ✓ | ✓ | | ✓ | ✓ | | |
| | MP332 Universal Jaw | ✓ | ✓ | ✓ | ✓ | ✓ | ✓* | |
| | MP332 Concrete Cutter Jaw-Flat Top | ✓ | ✓ | ✓* | ✓ | ✓ | | |
| | MP332 Demolition Jaw-Flat Top | ✓ | ✓ | | ✓ | ✓ | | |
| | MP332 Pulverizer Jaw-Flat Top | ✓ | ✓ | | ✓ | ✓ | | |
| | MP332 Shear Jaw-Flat Top | ✓ | ✓ | ✓* | ✓ | ✓ | ✓* | |
| | MP332 Tank Shear Jaw-Flat Top | ✓ | ✓* | | ✓* | | | |
| | MP332 Universal Jaw-Flat Top | ✓ | ✓ | | ✓ | ✓ | | |
| Demolition and Sorting Grapples | G332 | ✓ | ✓ | ✓ | ✓ | ✓ | ✓ | |
| | G345 | ✓ | ✓ | ✓* | ✓ | ✓ | ✓* | |
| | G345 Flat Top | ✓ | ✓ | | ✓ | ✓ | | |
| Mobile Scrap and Demolition Shears | S3035-Flat Top | ✓ | ✓ | ✓ | ✓ | ✓ | ✓ | |
| Pulverizers | P232 Secondary Pulverizer | ✓ | ✓ | | ✓ | ✓ | | ✓ |
| | P332 Primary Pulverizer | ✓ | ✓ | ✓ | ✓ | ✓ | ✓* | |
| | P332 Primary Pulverizer-Flat Top | ✓ | ✓ | | ✓ | ✓ | | |
| Compactors (Vibratory Plate) | CVP110 | ✓ | ✓ | ✓ | ✓ | ✓ | ✓ | ✓ |

(continued on next page)

340 Hydraulic Excavator Specifications

Attachments Offering Guide – Africa, Middle East (continued)

Not all Attachments are available in all regions. Consult your Cat dealer for configurations available in your region.

Match No Match

BOOM-MOUNT

| Undercarriage | | Long | | Long Wide | |
|------------------------------------|----------------|---------------------|----------|---------------------|---|
| Counterweight | | 7.56 mt (16,700 lb) | | 7.56 mt (16,700 lb) | |
| Boom Type | | ME | Reach HD | Reach HD+ | |
| Mobile Scrap and Demolition Shears | S2070 | ✓ | ✓ | ✓ | ✓ |
| | S2090 | ✓ | ✓ | ✓ | ✓ |
| | S3070-Flat Top | | ✓ | ✓ | |

340 Hydraulic Excavator Specifications

Attachments Offering Guide – Eurasia

Not all Attachments are available in all regions. Consult your Cat dealer for configurations available in your region.

Match

* Working range front only

No Match

PIN-ON ATTACHMENTS

| Undercarriage | | Long Wide | | | |
|------------------------------------|----------------------------------|---------------------------|----------------------|-----------------------|------------------|
| Counterweight | | 7.56 mt (16,700 lb) | | | |
| Boom Type | | Reach HD | | | Mass |
| Stick Length | | 2.80 m HD (9'2") | 3.20 m HD (10'6") | 3.90 m HD (12'10") | 2.55 m (8'4") |
| Hydraulic Hammers | H140 GC | ✓ | ✓ | ✓ | ✓ |
| | H140 GC-Side Mount | ✓ | ✓ | ✓ | |
| | H140 GC S | ✓ | ✓ | ✓ | ✓ |
| | H140 S | ✓ | ✓ | ✓ | ✓ |
| | H160 GC | ✓ | ✓ | ✓ | ✓ |
| | H160 GC-Side Mount | ✓ | ✓ | ✓ | ✓ |
| | H160 GC S | ✓ | ✓ | ✓ | ✓ |
| | H160 S | ✓ | ✓ | ✓ | ✓ |
| | H180 GC | ✓ | ✓* | | ✓ |
| | H180 GC-Side Mount | ✓ | ✓ | | ✓ |
| | H180 GC S | ✓ | ✓ | ✓ | ✓ |
| | H180 S | ✓ | ✓ | ✓ | ✓ |
| | Multi-Processors | MP332 Concrete Cutter Jaw | ✓ | ✓ | ✓ |
| MP332 Demolition Jaw | | ✓ | ✓ | ✓ | |
| MP332 Pulverizer Jaw | | ✓ | ✓ | ✓ | |
| MP332 Shear Jaw | | ✓ | ✓ | ✓ | |
| MP332 Tank Shear Jaw | | ✓ | ✓ | ✓ | |
| MP332 Universal Jaw | | ✓ | ✓ | ✓ | |
| MP332 Concrete Cutter Jaw-Flat Top | | ✓ | ✓ | ✓ | |
| MP332 Demolition Jaw-Flat Top | | ✓ | ✓ | ✓ | |
| MP332 Pulverizer Jaw-Flat Top | | ✓ | ✓ | ✓ | |
| MP332 Shear Jaw-Flat Top | | ✓ | ✓ | ✓ | |
| MP332 Tank Shear Jaw-Flat Top | | ✓ | ✓ | ✓* | |
| MP332 Universal Jaw-Flat Top | | ✓ | ✓ | ✓ | |
| Demolition and Sorting Grapples | | G332 | ✓ | ✓ | ✓ |
| | G345 | ✓ | ✓ | ✓ | |
| | G345 Flat Top | ✓ | ✓ | ✓ | |
| Mobile Scrap and Demolition Shears | S3035-Flat Top | ✓ | ✓ | ✓ | |
| Pulverizers | P232 Secondary Pulverizer | ✓ | ✓ | ✓ | ✓ |
| | P332 Primary Pulverizer | ✓ | ✓ | ✓ | |
| | P332 Primary Pulverizer-Flat Top | ✓ | ✓ | ✓ | |
| Compactors (Vibratory Plate) | CVP110 | ✓ | ✓ | ✓ | ✓ |

(continued on next page)

340 Hydraulic Excavator Specifications

Attachments Offering Guide – Eurasia (continued)

Not all Attachments are available in all regions. Consult your Cat dealer for configurations available in your region.

Match
 No Match
 1800 kg/m³ (3,000 lb/yd³)
 1200 kg/m³ (2,000 lb/yd³)

PIN-ON ATTACHMENTS (continued)

| Undercarriage | | Long Wide | | | |
|----------------------|--------------------|---------------------|----------------------|-----------------------|------------------|
| | | 7.56 mt (16,700 lb) | | | |
| Counterweight | | Reach HD | | | Mass |
| | | 2.80 m HD (9'2") | 3.20 m HD (10'6") | 3.90 m HD (12'10") | |
| Boom Type | | | | | 2.55 m (8'4") |
| Stick Length | | | | | |
| Orange Peel Grapples | GSH440-950 | ● | ● | ● | |
| | GSH440-1150 | ● | ● | ● | |
| | GSH440-1550 | ● | ● | ○ | |
| | GSH455-1000 | ● | ● | ● | |
| | GSH455-1500 | ● | ○ | ○ | |
| | GSH455-2000 | ○ | ○ | | |
| | GSH555-1000 | ● | ● | ○ | |
| | GSH555-1500 | ○ | ○ | | |
| | GSM50-1000 | ● | ● | ○ | |
| | GSM50-1250 | ● | ○ | | |
| | GSM50-1500 | ○ | ○ | | |
| | Clamshell Grapples | CTV20-1300 | ● | ● | ● |
| CTV20-1500 | | ● | ● | ● | |
| CTV20-1700 | | ● | ● | ○ | |
| CTV20-1900 | | ● | ○ | ○ | |
| CTV20-2300 | | ○ | ○ | | |
| CTV20-2700 | | ○ | | | |
| CTV30-1700 | | ● | ○ | ○ | |
| CTV30-1900 | | ○ | ○ | | |
| CTV30-2300 | | ○ | | | |
| Rotary Cutters | RC30 | ✓ | ✓ | ✓ | |
| | RC50 | | | | ✓ |

(continued on next page)

340 Hydraulic Excavator Specifications

Attachments Offering Guide – Eurasia (continued)

Not all Attachments are available in all regions. Consult your Cat dealer for configurations available in your region.

Match

* Working range front only

No Match

CAT PIN GRABBER COUPLER ATTACHMENTS

| Undercarriage | | Long Wide | | | |
|------------------------------------|------------------------------------|---------------------|----------------------|-----------------------|------------------|
| Counterweight | | 7.56 mt (16,700 lb) | | | |
| Boom Type | | Reach HD | | | Mass |
| Stick Length | | 2.80 m HD (9'2") | 3.20 m HD (10'6") | 3.90 m HD (12'10") | 2.55 m (8'4") |
| Hydraulic Hammers | H140 GC | ✓ | ✓ | ✓* | ✓ |
| | H140 GC-Side Mount | ✓ | ✓ | ✓ | |
| | H140 GC S | ✓ | ✓ | ✓ | ✓ |
| | H140 S | ✓ | ✓ | ✓ | ✓ |
| | H160 GC | ✓ | ✓* | ✓ | ✓ |
| | H160 GC-Side Mount | ✓ | ✓ | | ✓ |
| | H160 GC S | ✓ | ✓ | ✓ | ✓ |
| | H160 S | ✓ | ✓ | ✓ | ✓ |
| | H180 GC | ✓* | | | ✓* |
| | H180 GC S | ✓ | ✓ | | ✓ |
| | H180 S | ✓ | ✓* | | ✓ |
| Multi-Processors | MP332 Concrete Cutter Jaw | ✓ | ✓ | ✓ | |
| | MP332 Demolition Jaw | ✓ | ✓ | ✓* | |
| | MP332 Pulverizer Jaw | ✓ | ✓ | ✓* | |
| | MP332 Shear Jaw | ✓ | ✓ | ✓ | |
| | MP332 Tank Shear Jaw | ✓ | ✓ | | |
| | MP332 Universal Jaw | ✓ | ✓ | ✓* | |
| | MP332 Concrete Cutter Jaw-Flat Top | ✓ | ✓ | | |
| | MP332 Demolition Jaw-Flat Top | ✓ | ✓ | | |
| | MP332 Pulverizer Jaw-Flat Top | ✓ | ✓ | | |
| | MP332 Shear Jaw-Flat Top | ✓ | ✓ | | |
| | MP332 Tank Shear Jaw-Flat Top | ✓* | | | |
| | MP332 Universal Jaw-Flat Top | ✓ | ✓ | | |
| | Demolition and Sorting Grapples | G332 | ✓ | ✓ | ✓ |
| G345 | | ✓ | ✓ | ✓* | |
| G345 Flat Top | | ✓ | ✓ | | |
| Mobile Scrap and Demolition Shears | S3035-Flat Top | ✓ | ✓ | ✓ | |
| Pulverizers | P232 Secondary Pulverizer | ✓ | ✓ | | ✓ |
| | P332 Primary Pulverizer | ✓ | ✓ | ✓* | |
| | P332 Primary Pulverizer-Flat Top | ✓ | ✓ | | |
| Compactors (Vibratory Plate) | CVP110 | ✓ | ✓ | ✓ | ✓ |
| Rotary Cutters | RC30 | ✓ | ✓ | ✓ | |
| | RC50 | | | | ✓ |

(continued on next page)

340 Hydraulic Excavator Specifications

Attachments Offering Guide – Eurasia (continued)

Not all Attachments are available in all regions. Consult your Cat dealer for configurations available in your region.

Match

* Working range front only

No Match

CW-45s DEDICATED COUPLER ATTACHMENTS

| Undercarriage | | Long Wide | | | |
|------------------------------------|------------------------------------|---------------------|----------------------|-----------------------|------------------|
| Counterweight | | 7.56 mt (16,700 lb) | | | |
| Boom Type | | Reach HD | | | Mass |
| Stick Length | | 2.80 m HD (9'2") | 3.20 m HD (10'6") | 3.90 m HD (12'10") | 2.55 m (8'4") |
| Hydraulic Hammers | H140 GC | ✓ | ✓ | ✓* | ✓ |
| | H140 GC S | ✓ | ✓ | ✓ | ✓ |
| | H140 S | ✓ | ✓ | ✓ | ✓ |
| | H160 GC | ✓ | ✓* | ✓ | ✓ |
| | H160 GC S | ✓ | ✓ | ✓ | ✓ |
| | H160 S | ✓ | ✓ | ✓ | ✓ |
| | H180 GC | ✓* | | | ✓ |
| | H180 GC S | ✓ | ✓* | | ✓ |
| | H180 S | ✓ | ✓* | | ✓ |
| Multi-Processors | MP332 Concrete Cutter Jaw | ✓ | ✓ | ✓ | |
| | MP332 Demolition Jaw | ✓ | ✓ | ✓ | |
| | MP332 Pulverizer Jaw | ✓ | ✓ | ✓ | |
| | MP332 Shear Jaw | ✓ | ✓ | ✓ | |
| | MP332 Tank Shear Jaw | ✓ | ✓ | | |
| | MP332 Universal Jaw | ✓ | ✓ | ✓ | |
| | MP332 Concrete Cutter Jaw-Flat Top | ✓ | ✓ | ✓* | |
| | MP332 Demolition Jaw-Flat Top | ✓ | ✓ | | |
| | MP332 Pulverizer Jaw-Flat Top | ✓ | ✓ | | |
| | MP332 Shear Jaw-Flat Top | ✓ | ✓ | ✓* | |
| | MP332 Tank Shear Jaw-Flat Top | ✓ | ✓* | | |
| | MP332 Universal Jaw-Flat Top | ✓ | ✓ | | |
| Demolition and Sorting Grapples | G332 | ✓ | ✓ | ✓ | |
| | G345 | ✓ | ✓ | ✓* | |
| | G345 Flat Top | ✓ | ✓ | ✓* | |
| Mobile Scrap and Demolition Shears | S3035-Flat Top | ✓ | ✓ | ✓ | |
| Pulverizers | P232 Secondary Pulverizer | ✓ | ✓ | | ✓ |
| | P332 Primary Pulverizer | ✓ | ✓ | ✓ | |
| | P332 Primary Pulverizer-Flat Top | ✓ | ✓ | | |
| Compactors (Vibratory Plate) | CVP110 | ✓ | ✓ | ✓ | ✓ |
| Rotary Cutters | RC30 | ✓ | ✓ | ✓ | |
| | RC50 | | | | ✓ |

(continued on next page)

340 Hydraulic Excavator Specifications

Attachments Offering Guide – Eurasia (continued)

Not all Attachments are available in all regions. Consult your Cat dealer for configurations available in your region.

Match

* Working range front only

No Match

CW-45 DEDICATED COUPLER ATTACHMENTS

| Undercarriage | | Long Wide | | | |
|------------------------------------|------------------------------------|---------------------|----------------------|-----------------------|------------------|
| Counterweight | | 7.56 mt (16,700 lb) | | | |
| Boom Type | | Reach HD | | | Mass |
| Stick Length | | 2.80 m HD (9'2") | 3.20 m HD (10'6") | 3.90 m HD (12'10") | 2.55 m (8'4") |
| Hydraulic Hammers | H140 GC | ✓ | ✓ | ✓* | ✓ |
| | H140 GC S | ✓ | ✓ | ✓ | ✓ |
| | H140 S | ✓ | ✓ | ✓ | ✓ |
| | H160 GC | ✓ | ✓* | ✓ | ✓ |
| | H160 GC S | ✓ | ✓ | ✓ | ✓ |
| | H160 S | ✓ | ✓ | ✓ | ✓ |
| | H180 GC | ✓* | | | ✓ |
| | H180 GC S | ✓ | ✓ | | ✓ |
| | H180 S | ✓ | ✓* | | ✓ |
| Multi-Processors | MP332 Concrete Cutter Jaw | ✓ | ✓ | ✓ | |
| | MP332 Demolition Jaw | ✓ | ✓ | ✓ | |
| | MP332 Pulverizer Jaw | ✓ | ✓ | ✓ | |
| | MP332 Shear Jaw | ✓ | ✓ | ✓ | |
| | MP332 Tank Shear Jaw | ✓ | ✓ | | |
| | MP332 Universal Jaw | ✓ | ✓ | ✓ | |
| | MP332 Concrete Cutter Jaw-Flat Top | ✓ | ✓ | ✓* | |
| | MP332 Demolition Jaw-Flat Top | ✓ | ✓ | | |
| | MP332 Pulverizer Jaw-Flat Top | ✓ | ✓ | | |
| | MP332 Shear Jaw-Flat Top | ✓ | ✓ | ✓* | |
| | MP332 Tank Shear Jaw-Flat Top | ✓ | ✓* | | |
| | MP332 Universal Jaw-Flat Top | ✓ | ✓ | | |
| Demolition and Sorting Grapples | G332 | ✓ | ✓ | ✓ | |
| | G345 | ✓ | ✓ | ✓* | |
| | G345 Flat Top | ✓ | ✓ | | |
| Mobile Scrap and Demolition Shears | S3035-Flat Top | ✓ | ✓ | ✓ | |
| Pulverizers | P232 Secondary Pulverizer | ✓ | ✓ | | ✓ |
| | P332 Primary Pulverizer | ✓ | ✓ | ✓ | |
| | P332 Primary Pulverizer-Flat Top | ✓ | ✓ | | |
| Compactors (Vibratory Plate) | CVP110 | ✓ | ✓ | ✓ | ✓ |
| Rotary Cutters | RC30 | ✓ | ✓ | ✓ | |

(continued on next page)

340 Hydraulic Excavator Specifications

Attachments Offering Guide – Eurasia *(continued)*

Not all Attachments are available in all regions. Consult your Cat dealer for configurations available in your region.

Match
 No Match

BOOM-MOUNT

| Undercarriage | | Long | Long Wide | |
|------------------------------------|----------------|---------------------|---------------------|------|
| Counterweight | | 7.56 mt (16,700 lb) | 7.56 mt (16,700 lb) | |
| Boom Type | | Mass | Reach HD | Mass |
| Mobile Scrap and Demolition Shears | S2070 | ✓ | ✓ | ✓ |
| | S2090 | ✓ | ✓ | ✓ |
| | S3070-Flat Top | | ✓ | |

340 Hydraulic Excavator Specifications

Attachments Offering Guide – Indonesia

Not all Attachments are available in all regions. Consult your Cat dealer for configurations available in your region.

Match

* Working range front only

No Match

PIN-ON ATTACHMENTS

| Undercarriage | | Long Wide | | |
|------------------------------|-----------|---------------------|----------------------|------------------|
| Counterweight | | 7.56 mt (16,700 lb) | | |
| Boom Type | | Reach HD | | Mass |
| Stick Length | | 3.2 m (10'6") HD | 3.9 m (12'10") HD | 2.55 m (8'4") |
| Hydraulic Hammers | H140 GC | ✓ | ✓ | ✓ |
| | H140 GC S | ✓ | ✓ | ✓ |
| | H140 S | ✓ | ✓ | ✓ |
| | H160 GC | ✓ | ✓ | ✓ |
| | H160 GC S | ✓ | ✓ | ✓ |
| | H160 S | ✓ | ✓ | ✓ |
| | H180 GC | ✓* | | ✓ |
| | H180 GC S | ✓ | ✓ | ✓ |
| | H180 S | ✓ | ✓ | ✓ |
| Compactors (Vibratory Plate) | CVP110 | ✓ | ✓ | ✓ |
| Rotary Cutters | RC30 | ✓ | ✓ | |

Standard and Optional Equipment

Standard and optional equipment may vary. Consult your Cat dealer for details.

| | Standard | Optional | | Standard | Optional |
|--------------------------------------------------------------------------------|----------------|----------------|----------------------------------------------------------------------------------------------------------------------------------------------------------------------------------------------------------------|----------|----------|
| BOOMS, STICKS AND LINKAGES | | | ELECTRICAL SYSTEM | | |
| 6.18 m (20'3") Mass boom | | ✓ | Maintenance-free 1,000 CCA batteries (×2) | ✓ | |
| 6.5 m (21'4") HD Reach boom | | ✓ | Maintenance-free 1,000 CCA batteries (×4) | | ✓ |
| 2.55 m (8'4") Mass stick | | ✓ | Centralized electrical disconnect switch | ✓ | |
| 2.8 m (9'2") HD Reach stick | | ✓ | LED exterior chassis and boom lights | ✓ | |
| 3.2 m (10'6") HD Reach stick | | ✓ | Premium surround working lights | | ✓ |
| 3.9 m (12'10") HD Reach stick | | ✓ | ENGINE | | |
| DB family bucket linkage with lifting eye | | ✓ | 115 Amp alternator | ✓ | |
| DB family bucket linkage without lifting eye | | ✓ | Three selectable modes: Power, Smart, Eco | ✓ | |
| TB family bucket linkage with lifting eye | | ✓ | Auto engine speed control | ✓ | |
| TB family bucket linkage without lifting eye | | ✓ | 52° C (126° F) high-ambient cooling | ✓ | |
| CAT TECHNOLOGY | | | Hydraulic reverse fan | | ✓ |
| Cat Equipment Management: | | | -18° C (0° F) cold start capability | ✓ | |
| - VisionLink® | ✓ ¹ | | -32° C (-25° F) cold start capability | | ✓ |
| - VisionLink Productivity | | ✓ ² | Double element air filter with integrated pre-cleaner | ✓ | |
| - Remote Flash | ✓ | | Dual stage four micron main filter | ✓ | |
| - Remote Troubleshoot | ✓ | | 10 micron primary filter with water separator | ✓ | |
| Cat Grade: | | | Electric fuel priming pump | ✓ | |
| - Cat Grade with 2D | | ✓ | Secure start with PIN code | ✓ | |
| - Cat Grade with 2D with Attachment Ready Option (ARO) | | ✓ | Remote disable | ✓ | |
| - Laser catcher | | ✓ | ¹ Provides core telematics data to manage health, maintenance insights, and condition monitoring. Other plans available for more comprehensive data reporting. Consult your Cat dealer for details. | | |
| - Cat Grade with 3D (single or dual Global Navigation Satellite System [GNSS]) | | ✓ | ² VisionLink subscription required. Consult your Cat dealer for details. | | |
| - Compatible with 3D grade systems from Trimble, Topcon, and Leica | | ✓ | ³ VisionLink subscription required for back office reporting. Consult your Cat dealer for details. | | |
| - Cat Grade 3D Ready | | ✓ | | | |
| Cat Assist: | | | <i>(continued on next page)</i> | | |
| - Grade Assist | | ✓ | | | |
| - Boom Assist | | ✓ | | | |
| - Bucket Assist | | ✓ | | | |
| - Swing Assist | | ✓ | | | |
| - Lift Assist | | ✓ | | | |
| Cat Payload: | | | | | |
| - On-the-go weighing | ✓ | | | | |
| - Semiautomatic calibration | ✓ | | | | |
| - Payload/cycle information | ✓ | | | | |
| - VisionLink Productivity back office reporting | | ✓ ³ | | | |
| Cat Advanced Payload: | | | | | |
| - Daily totals | | ✓ | | | |
| - Custom lists | | ✓ | | | |
| - Smart weight target | | ✓ | | | |
| - E-ticket Integration | | ✓ ² | | | |

340 Standard and Optional Equipment

Standard and Optional Equipment (continued)

Standard and optional equipment may vary. Consult your Cat dealer for details.

| | Standard | Optional | | Standard | Optional |
|----------------------------------------------------------|----------|----------|-----------------------------------------------------|----------|----------|
| HYDRAULIC SYSTEM | | | SERVICE AND MAINTENANCE | | |
| Boom and stick regeneration circuit | ✓ | | Integrated vehicle health management system | ✓ | |
| Electronic main control valve | ✓ | | Grouped engine oil and fuel filters | ✓ | |
| Auto dig boost | | ✓ | Scheduled Oil Sampling (S-O-S SM) ports | ✓ | |
| Auto heavy lift | | ✓ | QuickEvac™ maintenance ready | | ✓ |
| Auto hydraulic oil warmup | ✓ | | UNDERCARRIAGE AND STRUCTURES | | |
| Bio hydraulic oil capability | ✓ | | Long wide undercarriage | ✓ | |
| Fine swing | | ✓ | Towing eye on base frame | ✓ | |
| Reverse swing damping valve | ✓ | | Full-length track guiding guards | | ✓ |
| Auto swing parking brake | ✓ | | Segmented two-piece track guiding guards | | ✓ |
| High performance hydraulic return filter | ✓ | | Swivel guard | ✓ | |
| Two speed travel | ✓ | | HD bottom guard | ✓ | |
| Single one-way circuit | | ✓ | HD travel motor guards | ✓ | |
| Single one-way circuit with hammer return filter | | ✓ | Grease lubricated track | ✓ | |
| Medium-pressure auxiliary circuit | | ✓ | 7.56 mt (16,700 lb) counterweight | ✓ | |
| Combined two-way circuit with hammer return filter | | ✓ | 600 mm (24") double grouser track shoes | | ✓ |
| Quick coupler circuit for Cat Pin Grabber | | ✓ | 600 mm (24") triple grouser track shoes | | ✓ |
| Hydraulic efficiency monitoring | | ✓ | 600 mm (24") HD triple grouser track shoes | | ✓ |
| SAFETY AND SECURITY | | | 700 mm (28") triple grouser track shoes | | ✓ |
| 2D E-Fence: | | ✓ | 800 mm (31") triple grouser track shoes | | ✓ |
| – E-ceiling | | | | | |
| – E-floor | | | | | |
| – E-swing | | | | | |
| – E-wall | | | | | |
| – E-cab avoidance | | | | | |
| Auto hammer stop | ✓ | | | | |
| Caterpillar One Key security system | ✓ | | | | |
| Lockable external tool/storage box | ✓ | | | | |
| Lockable door, fuel, and hydraulic tank locks | ✓ | | | | |
| Lockable fuel drain compartment | ✓ | | | | |
| Lockable disconnect switch | ✓ | | | | |
| Service platform with anti-skid plate and recessed bolts | ✓ | | | | |
| Travel alarm | | ✓ | | | |
| Swing alarm | | ✓ | | | |
| Right Hand (RH) handrail and handhold | ✓ | | | | |
| Signaling/warning horn | ✓ | | | | |
| Ground-level secondary engine shutoff switch | ✓ | | | | |
| Boom lowering check valve | | ✓ | | | |
| Stick lowering check valve | | ✓ | | | |
| Rearview camera | ✓ | | | | |
| 360° visibility | | ✓ | | | |
| Inspection lighting | | ✓ | | | |

Dealer Installed Kits and Attachments

Attachments may vary. Consult your Cat dealer for details.

| | | |
|----------------------------------------------------------------------------------------------------------------------------------------------------------------------------------|------------------------------------------------------------------------------------------------------------------------------------------------------------------------------------------------------------------------------------------------------------------------|---------------------------------------------------------------------------------------------------------------------------------------------------------------------------------------------------------------------------------------------------------|
| CAB <ul style="list-style-type: none">• Polycarbonate roof hatch• Left Hand (LH)/RH electrical pedal for tool control• Lower radial wiper | ELECTRICAL <ul style="list-style-type: none">• Premium surround working lights GUARDS <ul style="list-style-type: none">• Side rubber bumper guard• Mesh guard full front• Full protecting vandalism guard | SAFETY AND SECURITY <ul style="list-style-type: none">• Bluetooth receiver kit• Bluetooth key fob• Operator Protective Guards• Cat Detect – People Detection• Cat Command – Remote control kit |
|----------------------------------------------------------------------------------------------------------------------------------------------------------------------------------|------------------------------------------------------------------------------------------------------------------------------------------------------------------------------------------------------------------------------------------------------------------------|---------------------------------------------------------------------------------------------------------------------------------------------------------------------------------------------------------------------------------------------------------|

340 Cab Options

| | Essential | Deluxe |
|-------------------------------------------------------------|-----------|--------|
| ROPS* | ● | ● |
| Operator Protective Guards (OPG) | ○ | ○ |
| High-resolution 203 mm (8") LCD touchscreen monitor | ● | ● |
| High-resolution 254 mm (10") LCD touchscreen monitor | ○ | ○ |
| Auto bi-level air conditioner | ● | ● |
| Jog dial and shortcut keys for monitor control | X | ● |
| Keyless push-to-start engine control | ● | ● |
| Height-adjustable console | X | ● |
| Tilt-up left-side console | X | ● |
| Air-suspension seat | ● | X |
| Heated air-suspension seat | X | ● |
| 51 mm (2") seat belt | ● | ● |
| Monitor integrated Bluetooth radio with USB/Auxiliary ports | X | ● |
| Bluetooth radio with USB/Auxiliary ports | ● | X |
| 12V DC outlets | X | ● |
| 24V DC outlet | ● | X |
| Document storage | X | ● |
| Overhead storage and rear storage with nets | X | ● |
| Beverage holder | ● | ● |
| Cup holder | X | ● |
| Openable two-piece front window | ● | ● |
| Rear window emergency exit | ● | ● |
| Radial wiper with washer | ● | ● |
| Openable polycarbonate skylight hatch | X | ● |
| Openable steel hatch | ● | X |
| LED dome light | ● | ● |
| Floor welcome light | X | ● |
| Roof sunscreen | X | ● |
| Roller front sunscreen | ● | ● |
| Roller rear sunscreen | ○ | ○ |
| Washable floor mat | ● | ● |
| Beacon ready | X | ● |
| Cat Stick Steer | ○ | ○ |
| Auxiliary relay | ○ | ○ |

● Standard

○ Optional

X Not available

* Non-rops cabs available in Indonesia

The following information applies to the machine at the time of final manufacture as configured for sale in the regions covered in this document. The content of this declaration is valid as of the date issued; however, content related to machine features and specifications are subject to change without notice. For additional information, please see the machine's Operation and Maintenance Manual.

For more information on sustainability in action and our progress, please visit <https://www.caterpillar.com/en/company/sustainability>.

Engine

- The Cat® C9.3B engine meets U.S. EPA Tier 3, EU Stage IIIA equivalent, and China Nonroad Stage III emission standards.
 - Cat engines are compatible with diesel fuel blended with the following lower-carbon intensity fuels** up to:
 - ✓ 100% biodiesel FAME (fatty acid methyl ester)*
 - ✓ 100% renewable diesel, HVO (hydrogenated vegetable oil) and GTL (gas-to-liquid) fuels
- Refer to guidelines for successful application. Please consult your Cat dealer or “Caterpillar Machine Fluids Recommendations” (SEBU6250) for details.
- *For use of blends higher than 20% biodiesel, consult your Cat dealer.*
- **Tailpipe greenhouse gas emissions from lower-carbon intensity fuels are essentially the same as traditional fuels.*

Air Conditioning System

- The air conditioning system on this machine contains the fluorinated greenhouse gas refrigerant R134a (Global Warming Potential = 1430). The system contains 1.0 kg (2.2 lb) of refrigerant which has a CO₂ equivalent of 1.430 metric tonnes (1.576 tons).

Paint

- Based on best available knowledge, the maximum allowable concentration, measured in parts per million (PPM), of the following heavy metals in paint are:
 - Barium < 0.01%
 - Cadmium < 0.01%
 - Chromium < 0.01%
 - Lead < 0.01%

Sound Performance

ISO 6395:2008 (external) – 106 dB(A)

ISO 6396:2008 (inside cab) – 73 dB(A)

- Hearing protection may be needed when operating with an open operator station and cab (when not properly maintained or doors/windows open) for extended periods or in a noisy environment.

Oils and Fluids

- Caterpillar factory fills with ethylene glycol coolants. Cat Diesel Engine Antifreeze/Coolant (DEAC) and Cat Extended Life Coolant (ELC) can be recycled. Consult your Cat dealer for more information.
- Cat Bio HYDO™ Advanced is an EU Ecolabel approved biodegradable hydraulic oil.
- Additional fluids are likely to be present, please consult the Operations and Maintenance Manual or the Application and Installation guide for complete fluid recommendations and maintenance intervals.

Features and Technology

- The following features and technology may contribute to fuel savings and/or carbon reduction. Features may vary. Consult your Cat dealer for details.
 - Smart mode matches machine power to digging requirements automatically
 - Eco mode supports reduced fuel consumption for light applications
 - One-touch low idle with automatic engine speed control
 - Available Cat technologies help improve operator efficiency
 - Extended service intervals help decrease maintenance costs

For more complete information on Cat products, dealer services, and industry solutions, visit us on the web at www.cat.com

© 2024 Caterpillar
All rights reserved

Materials and specifications are subject to change without notice. Featured machines in photos may include additional equipment. See your Cat dealer for available options.

CAT, CATERPILLAR, LET'S DO THE WORK, their respective logos, "Caterpillar Corporate Yellow," the "Power Edge" and Cat "Modern Hex" trade dress as well as corporate and product identity used herein, are trademarks of Caterpillar and may not be used without permission. VisionLink is a trademark of Caterpillar Inc., registered in the United States and in other countries.

AEXQ4067-00 (11-2024)
Build Number: 08D
(Afr-ME, Eurasia,
Indonesia)

