



313 GC

Hydraulic Excavator

Technical Specifications

Configurations and features may vary by region. Please consult your Cat® dealer for availability in your area.

Table of Contents

Specifications	2
Engine	2
Swing Mechanism	2
Weights	2
Track	2
Drive	2
Hydraulic System	2
Service Refill Capacities	2
Standards	2
Sound Performance	2
Operating Weights and Ground Pressures	3
Major Component Weights	4
Dimensions	5
Working Ranges and Forces	6
Shovel Crane Working Ranges	7
Blade Working Ranges	8
Bucket Specifications and Compatibility	9
Attachments Offering Guide	10
Standard and Optional Equipment	11
Dealer Installed Kits and Attachments	13
313 GC Environmental Declaration	14

313 GC Hydraulic Excavator Specifications

Engine

Engine Model	Cat® C3.6	
Net Power		
ISO 9249	54.3 kW	73 hp
ISO 9249 (DIN)	74 hp (metric)	
Engine Power		
ISO 14396	55.4 kW	74 hp
ISO 14396 (DIN)	75 hp (metric)	
Bore	98 mm	4 in
Stroke	120 mm	5 in
Displacement	3.6 L	220 in ³
Biodiesel Capability	Up to B20 ⁽¹⁾	

- Meets U.S. EPA Tier 4 Final, EU Stage V, and Japan 2014 emission standards.
- No engine power derating required below 3000 m (9,840 ft) altitude.
- Advertised power is tested per the specified standard in effect at the time of manufacture.
- Net power advertised is the power available at the flywheel when the engine is equipped with fan, air intake system, exhaust system and alternator.
- Engine speed at 2,400 rpm.

⁽¹⁾Cat diesel engines are required to use ULSD (ultra-low sulfur diesel fuel with 15 ppm of sulfur or less) or ULSD blended with the following lower-carbon intensity fuels** up to:

- ✓ 20% biodiesel FAME (fatty acid methyl ester)*
- ✓ 100% renewable diesel, HVO (hydrotreated vegetable oil) and GTL (gas-to-liquid) fuels

Refer to guidelines for successful application. Please consult your Cat dealer or “Caterpillar Machine Fluids Recommendations” (SEBU6250) for details.

**Engines with no aftertreatment devices can use higher blends, up to 100% biodiesel (for use of blends higher than 20% biodiesel, consult your Cat dealer).*

***Tailpipe greenhouse gas emissions from lower-carbon intensity fuels are essentially the same as traditional fuels.*

Swing Mechanism

Swing Speed	11.5 rpm	
Maximum Swing Torque	35 kN·m	25,888 lbf·ft

Weights

Operating Weight	12 700 kg	28,000 lb
------------------	-----------	-----------

- Standard undercarriage, Reach boom, R2.5 (8'2") stick, General Duty Excavation (GDX) 0.52 m³ (0.68 yd³) bucket, 500 mm (20") triple grouser shoes and 2.14 mt (4,718 lb) counterweight.

Track

Standard Track Shoes Width	500 mm	20 in
Optional Track Shoes Width	600 mm	24 in
Optional Track Shoes Width	700 mm	28 in
Number of Shoes (each side)	43	
Number of Track Rollers (each side)	6	
Number of Carrier Rollers (each side)	1	

Drive

Gradeability	35°/70%	
Maximum Travel Speed	5.4 km/h	3.4 mph
Maximum Drawbar Pull	117 kN	26,303 lbf

Hydraulic System

Main System – Maximum Flow – Implement	247 L/min	65 gal/min
Maximum Pressure – Equipment – Normal	35 000 kPa	5,075 psi
Maximum Pressure – Travel	35 000 kPa	5,075 psi
Maximum Pressure – Swing	26 000 kPa	3,770 psi
Boom Cylinder – Bore	105 mm	4 in
Boom Cylinder – Stroke	1026 mm	40 in
Stick Cylinder – Bore	115 mm	5 in
Stick Cylinder – Stroke	1147 mm	45 in
Bucket Cylinder – Bore	95 mm	4 in
Bucket Cylinder – Stroke	939 mm	37 in

Service Refill Capacities

Fuel Tank Capacity	258 L	68.2 gal
Cooling System	15 L	4.0 gal
Engine Oil	8 L	2.1 gal
Final Drive (each)	3 L	0.8 gal
Hydraulic System (including tank)	85 L	22.5 gal
Hydraulic Tank	70 L	18.5 gal

Standards

Brakes	ISO 10265:2008
Cab/Rollover Protective Structure (ROPS)	ISO 12117-2:2008
Cab/Operator Protective Guards (OPG) (optional)	ISO 10262:1998

Sound Performance

ISO 6395:2008 (external)	99 dB(A)
ISO 6396:2008 (inside cab)	68 dB(A)

- Hearing protection may be needed when operating with an open operator station and cab (when not properly maintained or doors/windows open) for extended periods or in a noisy environment.

313 GC Hydraulic Excavator Specifications

Operating Weights and Ground Pressures

Base Machine Configurations	500 mm (20") Triple Grouser Shoes		500 mm (20") Rubber Track Shoes		600 mm (24") Triple Grouser Shoes		700 mm (28") Triple Grouser Shoes	
	Weight kg (lb)	Ground Pressure kPa (psi)	Weight kg (lb)	Ground Pressure kPa (psi)	Weight kg (lb)	Ground Pressure kPa (psi)	Weight kg (lb)	Ground Pressure kPa (psi)
Base Frame with Track Rollers and Carrier Rollers								
2.14 mt (4,718 lb) Counterweight + Standard Undercarriage Base Machine								
Reach Boom + R2.5 (8'2") Stick + 0.52 m ³ (0.68 yd ³) GDX Bucket	12 700 (28,000)	41.1 (6.0)	12 800 (28,200)	41.4 (6.0)	12 900 (28,400)	34.8 (5.0)	13 100 (28,900)	30.3 (4.4)

All operating weights include a 90% fuel tank with 75 kg (165 lb) operator.

313 GC Hydraulic Excavator Specifications

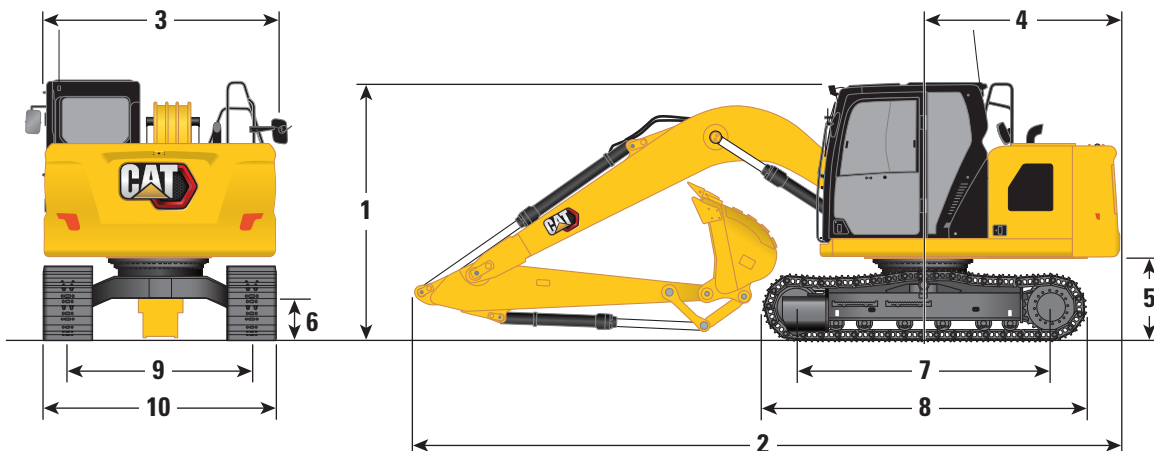
Major Component Weights

	kg	lb
Base Machine Weight: including upper frame, standard undercarriage, counterweight, without boom, stick, bucket, boom cylinders, stick cylinder, bucket cylinders, tracks, blade, without 90% fuel tank, operator		
With 2.14 mt (4,718 lb) Counterweight	8660	19,100
With 2.14 mt (4,718 lb) Counterweight and Blade Compatible	8970	19,800
Track Shoes:		
500 mm (20") Triple Grouser Track Shoes	1440	3,170
500 mm (20") Rubber Track Shoes	1560	3,400
600 mm (24") Triple Grouser Track Shoes	1690	3,730
700 mm (28") Triple Grouser Track Shoes with Additional Steps	1890	4,150
Two Boom Cylinders	240	530
Weight of 90% Fuel Tank and 75 kg (165 lb) Operator	270	600
Blades (without lines, cylinders, frame modifications):		
2500 mm (8'2") Blade for use with 500 mm (20") Track Shoes	440	960
2600 mm (8'6") Blade for use with 600 mm (24") Track Shoes	490	1,080
2700 mm (8'10") Blade for use with 700 mm (28") Track Shoes	500	1,110
Counterweight:		
2.14 mt (4,718 lb) Counterweight	2140	4,720
2.47 mt (5,445 lb) Counterweight	2470	5,450
Swing Frame	1240	2,730
Undercarriages:		
Base Frame with General Duty (GD) Track Rollers and One Carrier Rollers	2520	5,150
Base Frame with GD Track Rollers and One Carrier Rollers (blade compatible)	2820	6,210
Boom (including lines, pins, stick cylinder):		
Reach Boom 4.65 m (15'3")	1030	2,270
Sticks (including lines, pins, bucket cylinder, bucket linkage):		
Reach Stick R2.5 (8'2")	590	1,300
Reach Stick R3.0 (9'10")	650	1,400
Buckets (without linkage, with tips and side cutters):		
0.45 m ³ (0.59 yd ³) GDX Bucket	390	870
0.45 m ³ (0.59 yd ³) Heavy Duty Excavation (HDX) Bucket	460	940
0.52 m ³ (0.68 yd ³) GDX Bucket	430	900
0.52 m ³ (0.68 yd ³) HDX Bucket	480	1,060
0.57 m ³ (0.74 yd ³) GDX Bucket	440	960
0.63 m ³ (0.82 yd ³) GDX Bucket	460	1,010
0.52 m ³ (0.68 yd ³) HDX Skeleton Bucket	450	980
Two Bucket Pins	20	50
Quick Coupler:		
Pin Grabber Quick Coupler	210	470
Shovel Crane:		
Hook, Valves, and Sensors	50	100
Auxiliary Valve:		
Hydraulic oil lines for High Pressure (HP)	140	310

313 GC Hydraulic Excavator Specifications

Dimensions

All dimensions are approximate and may vary depending on bucket selection.



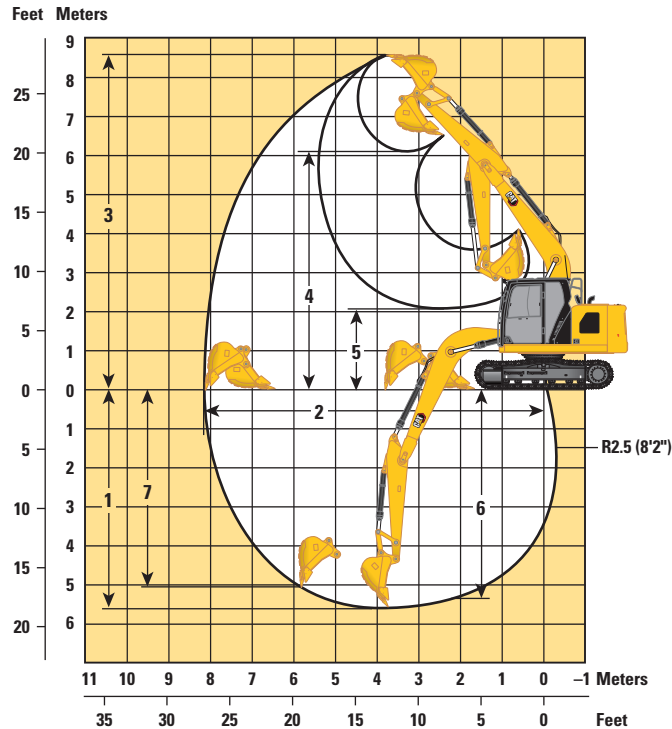
Boom Option	Reach Boom 4.65 m (15'3")			
Stick Options	Reach Stick R2.5 (8'2")		Reach Stick R3.0 (9'10")	
1 Machine Height:*				
Top of Cab Height	2810 mm	9'3"	2810 mm	9'3"
Top of OPG Height	2960 mm	9'8"	2960 mm	9'8"
Handrails Height	2810 mm	9'3"	2810 mm	9'3"
With Boom/Stick/Bucket Installed (with stick cylinder lines)	2960 mm	9'8"	3200 mm	10'6"
With Boom/Stick Installed (with stick cylinder lines)	2760 mm	9'1"	3010 mm	9'9"
With Boom Installed (with stick cylinder lines)	2340 mm	7'7"	2340 mm	7'7"
2 Machine Length (without blade):				
With Boom/Stick/Bucket Installed (with stick cylinder lines)	7700 mm	25'3"	7690 mm	25'2"
With Boom/Stick Installed (with stick cylinder lines)	7690 mm	25'3"	7740 mm	25'4"
With Boom Installed (with stick cylinder lines)	6830 mm	22'4"	6830 mm	22'4"
Machine Length (with blade, blade rear):				
With Boom/Stick/Bucket Installed (with stick cylinder lines)	7980 mm	26'1"	7970 mm	26'2"
With Boom/Stick Installed (with stick cylinder lines)	7980 mm	26'1"	8020 mm	26'3"
With Boom Installed (with stick cylinder lines)	7110 mm	23'3"	7110 mm	23'3"
3 Upperframe Width	2480 mm	8'2"	2480 mm	8'2"
4 Tail Swing Radius – 2.14 mt (4,718 lb) Counterweight	2190 mm	7'2"	2190 mm	7'2"
5 Counterweight Clearance	916 mm	3'0"	916 mm	3'0"
6 Ground Clearance	446 mm	1'6"	446 mm	1'6"
7 Length to Center of Rollers	2780 mm	9'1"	2780 mm	9'1"
8 Track Length	3490 mm	11'5"	3490 mm	11'5"
9 Track Gauge	1990 mm	6'6"	1990 mm	6'6"
10 Track Width/Undercarriage Width:				
500 mm (20") Shoes	2490 mm	8'2"	2490 mm	8'2"
600 mm (24") Shoes	2590 mm	8'6"	2590 mm	8'6"
700 mm (28") Shoes (with steps)	2690 mm	8'10"	2690 mm	8'10"
Bucket Type	GDX		GDX	
Bucket Capacity	0.52 m ³	0.68 yd ³	0.52 m ³	0.68 yd ³
Bucket Tip Radius	1230 mm	4'0"	1230 mm	4'0"

*For models with rubber track shoes add 40 mm (1.6") to machine height dimensions.

313 GC Hydraulic Excavator Specifications

Working Ranges and Forces

All dimensions are approximate and may vary depending on bucket selection.

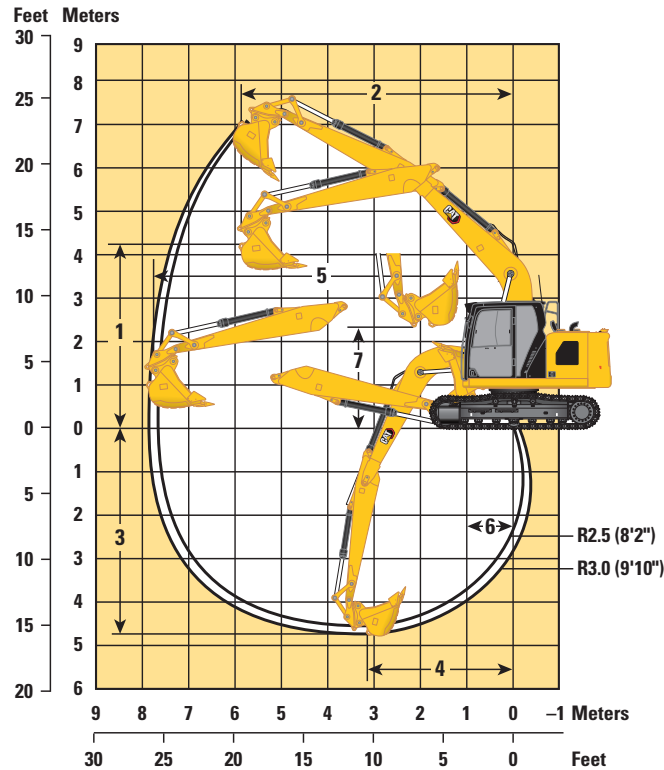


Boom Option	Reach Boom 4.65 m (15'3")			
Stick Option	Reach Stick R2.5 (8'2")		Reach Stick R3.0 (9'10")	
1 Maximum Digging Depth	5540 mm	18'2"	6040 mm	19'10"
2 Maximum Reach at Ground Line	8190 mm	26'10"	8650 mm	28'5"
3 Maximum Cutting Height	8580 mm	28'2"	8860 mm	29'1"
4 Maximum Loading Height	6150 mm	20'2"	6430 mm	21'1"
5 Minimum Loading Height	2090 mm	6'10"	1610 mm	5'3"
6 Maximum Depth Cut for 2440 mm (8'0") Level Bottom	5330 mm	17'6"	5850 mm	19'2"
7 Maximum Vertical Wall Digging Depth	5030 mm	16'6"	5520 mm	18'1"
Minimum Working Equipment Radius	2430 mm	8'0"	2570 mm	8'5"
Bucket Digging Force (ISO)	98.43 kN	22,130 lbf	98.65 kN	22,180 lbf
Stick Digging Force (ISO)	66.51 kN	14,950 lbf	59.17 kN	13,302 lbf
Bucket Type	GDX		GDX	
Bucket Capacity	0.52 m ³	0.68 yd ³	0.52 m ³	0.68 yd ³
Bucket Tip Radius	1230 mm	4'0"	1230 mm	4'0"

313 GC Hydraulic Excavator Specifications

Shovel Crane Working Ranges

All dimensions are approximate and may vary depending on bucket selection.

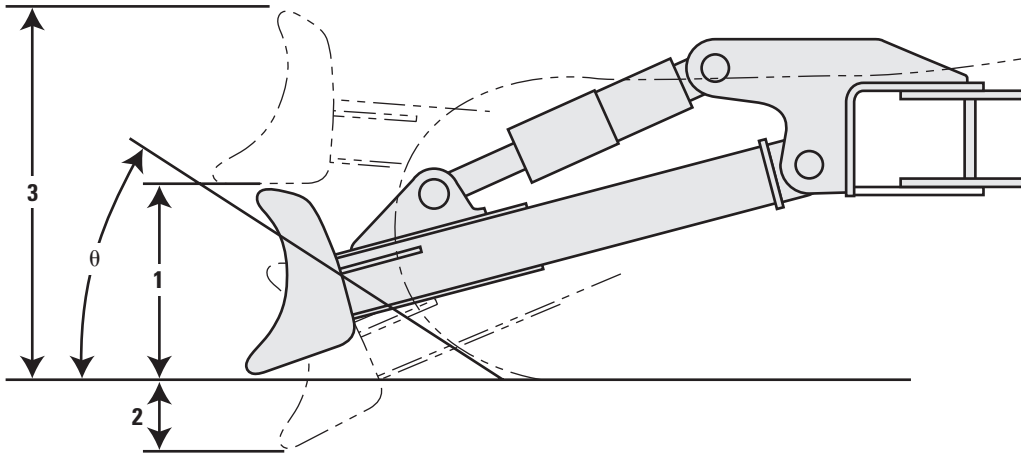


Boom Option	Reach Boom 4.65 m (15'3")			
	Reach Stick			
Stick Options	R2.5 (8'2")		R3.0 (9'10")	
Lifting Capacity				
Max	2.9 mt	6390 lb	2.9 mt	6390 lb
Minimum Reach	2.9 mt	6390 lb	2.9 mt	6390 lb
Maximum Reach	1.2 mt	2650 lb	1.0 mt	2200 lb
Lifting Range				
1 Maximum Height	4340 mm	14'3"	4230 mm	13'10"
2 Maximum Length at Maximum Height	5400 mm	17'9"	5890 mm	19'4"
3 Maximum Lifting Depth	4230 mm	13'10"	4730 mm	15'6"
4 Maximum Length at Maximum depth	3160 mm	10'4"	3160 mm	10'4"
5 Maximum Length	7290 mm	23'11"	7750 mm	25'5"
6 Minimum Length	1080 mm	3'6"	1000 mm	3'3"
7 Maximum Height at Minimum length	2460 mm	8'1"	2310 mm	7'7"

313 GC Hydraulic Excavator Specifications

Blade Working Ranges

All dimensions are approximate and may vary depending on bucket selection.



Blade Options	2500 mm (8'2")		2600 mm (8'6")		2700 mm (8'10")	
	1 Blade Height	616 mm	2'0"	616 mm	2'0"	616 mm
2 Maximum Lowering Depth from Ground	550 mm	1'10"	550 mm	1'10"	550 mm	1'10"
3 Maximum Raising Height above Ground	1018 mm	3'4"	1018 mm	3'4"	1018 mm	3'4"
θ Approach Angle	23°		23°		23°	

313 GC Hydraulic Excavator Specifications

Bucket Specifications and Compatibility

		mm	in	m ³	yd ³	Counterweight			2.14 mt (4,718 lb)		2.47 mt (5,445 lb)	
						kg	lb	%	Reach Boom		Reach	
									R2.5 (8'2")	R3.0 (9'10")	R3.0 (9'10")	
Pin-On (No Quick Coupler)												
General Duty Excavation	312	800	32	0.45	0.59	383	845	100	●	●	●	
	312	900	35	0.52	0.68	409	903	100	●	●	●	
	312	950	37	0.57	0.75	427	942	100	●	⊙	●	
	312	1000	39	0.63	0.82	448	989	100	⊙	⊖	⊙	
Heavy Duty Excavation	312	800	32	0.45	0.59	439	967	100	●	●	●	
	312	900	35	0.52	0.68	467	1,029	100	●	⊙	●	
Heavy Duty Excavation (Skeleton)	312	900	35.4	0.52	0.68	446	983	100	●	⊙	●	
Tamping	312	1800	71	0.29	0.38	436	962	100	●	●	●	
	312	1800	71	0.52	0.68	453	998	100	●	⊙	●	
Maximum load pin-on (payload + bucket)									kg	1660	1470	1580
									lb	3,668	3,240	3,483
With Cat Pin Grabber Coupler												
General Duty Excavation	312	800	32	0.45	0.59	383	845	100	●	⊙	●	
	312	900	35	0.52	0.68	409	903	100	●	⊖	⊙	
	312	950	37	0.57	0.75	427	942	100	⊙	⊖	⊖	
	312	1000	39	0.63	0.82	448	989	100	⊖	○	⊖	
Heavy Duty Excavation	312	800	32	0.45	0.59	439	967	100	●	⊙	●	
	312	900	35	0.52	0.68	467	1,029	100	⊙	⊖	⊙	
Heavy Duty Excavation (Skeleton)	312	900	35.4	0.52	0.68	446	983	100	⊙	⊖	⊙	
Tamping	312	1800	71	0.29	0.38	436	962	100	●	●	●	
	312	1800	71	0.52	0.68	453	998	100	⊙	⊖	⊙	
Maximum load with coupler (payload + bucket)									kg	1464	1270	1380
									lb	3,228	2,800	3,043

The above loads are in compliance with hydraulic excavator standard EN474-5:2006 + A3:2013, they do not exceed 87% of hydraulic lifting capacity or 75% of tipping capacity with front linkage fully extended at ground line with bucket curled. Capacity based on ISO 7451:2007.

Maximum Material Density:

- 2100 kg/m³ (3,500 lb/yd³)
- ⊙ 1800 kg/m³ (3,000 lb/yd³)
- ⊖ 1500 kg/m³ (2,500 lb/yd³)
- 1200 kg/m³ (2,000 lb/yd³)

Caterpillar recommends using appropriate work tools to maximize the value customers receive from our products. Use of work tools, including buckets, which are outside of Caterpillar's recommendations or specifications for weight, dimensions, flows, pressures, etc. may result in less-than-optimal performance, including but not limited to reductions in production, stability, reliability, and component durability. Improper use of a work tool resulting in sweeping, prying, twisting and/or catching of heavy loads will reduce the life of the boom and stick.

313 GC Hydraulic Excavator Specifications

Attachments Offering Guide

Not all Attachments are available in all regions. Consult your Cat dealer for configurations available in your region.

Match

* Working range front only

PIN-ON ATTACHMENTS

Undercarriage		–	–	–
Counterweight		2.14 mt (4,718 lb)	2.14 mt (4,718 lb)	2.47 mt (5,445 lb)
Boom Type		Reach	Reach	Reach
Stick Length		2.50 m (8'2")	3.00 m (9'10")	3.00 m (9'10")
Hydraulic Hammers	H110 GC	✓	✓	✓
	H110 GC Side Mount	✓	✓	✓
	H110 S	✓	✓	✓
	H115 S	✓	✓	✓
Rotary Cutters	RC10	✓	✓	✓

CAT PIN GRABBER COUPLER ATTACHMENTS

Hydraulic Hammers	H110 GC	✓	✓	✓
	H110 GC Side Mount	✓	✓	✓
	H110 S	✓	✓	✓
	H115 S	✓	✓*	✓
Rotary Cutters	RC10	✓	✓	✓

Standard and Optional Equipment

Standard and optional equipment may vary. Consult your Cat dealer for details.

	Standard	Optional		Standard	Optional
BOOMS, STICKS AND LINKAGES			CAT TECHNOLOGY		
4.65 m (15'3") Reach boom	✓		Cat Equipment Management:		
2.5 m (8'2") Reach stick		✓	– VisionLink®	✓ ¹	
3.0 m (9'10") Reach stick		✓	– VisionLink Productivity		✓ ²
Bucket linkage, without lifting eye	✓		– Remote Flash	✓	
Bucket linkage, with lifting hook for shovel crane		✓	ELECTRICAL SYSTEM		
CAB			Maintenance free battery	✓	
ROPS	✓		Centralized electrical disconnect switch	✓	
Operator Protective Guards (OPG)		✓	LED chassis light, left-side boom light, cab lights	✓	
High-resolution 203 mm (8") LCD touchscreen monitor	✓		LED right-side boom light		✓
Auto bi-level air conditioner	✓		Programmable time-delay LED working lights	✓	
Jog dial and shortcut keys for monitor control	✓		360° lighting		✓
Keyless push-to-start engine control	✓		ENGINE		
Height-adjustable console, three steps with tool	✓		Cat® C3.6 single turbo diesel engine	✓	
Fixed left-side console	✓		Two selectable modes: Power, Smart	✓	
Mechanical suspension seat	✓		Automatic engine speed control	✓	
51 mm (2") seat belt	✓		Auto engine shutdown	✓	
Bluetooth® radio with USB/Auxiliary ports	✓		52° C (125° F) high-ambient cooling capacity without de-rate	✓	
12V DC outlets	✓		–18° C (0° F) cold start capability	✓	
Document storage	✓		Variable speed fan (viscous clutch type)	✓	
Beverage holder	✓		Single fuel filtration system with water separator and indicator	✓	
Cup holder	✓		Sealed double element air filter with integrated pre-cleaner	✓	
Openable two-piece front window	✓				
Rear window emergency exit	✓				
Radial wiper with washer	✓				
Openable steel hatch	✓				
LED dome light	✓				
Roller front sunscreen	✓				
Roller rear sunscreen		✓			
Washable floor mat	✓				
Beacon ready	✓				

(continued on next page)

¹Provides core telematics data to manage health, maintenance insights, and condition monitoring. Other plans available for more comprehensive data reporting. Consult your Cat dealer for details.

²VisionLink subscription required. Consult your Cat dealer for details.

313 GC Standard and Optional Equipment

Standard and Optional Equipment *(continued)*

Standard and optional equipment may vary. Consult your Cat dealer for details.

	Standard	Optional		Standard	Optional
HYDRAULIC SYSTEM			UNDERCARRIAGE AND STRUCTURES		
Boom and stick regeneration circuits	✓		Grease lubricated track link	✓	
Automatic hydraulic oil warm up	✓		500 mm (20") triple grouser track shoes	✓	
Automatic two-speed travel	✓		500 mm (20") rubber track shoes		✓
Electric main control valve	✓		600 mm (24") triple grouser track shoes		✓
Boom and stick drift reduction valve	✓		700 mm (28") triple grouser track shoes		✓
Swing drive	✓		2500 mm (8'2") blade		✓
Auxiliary line support	✓		2600 mm (8'6") blade		✓
Boom and stick lowering check valves		✓	2700 mm (8'10") blade		✓
Medium-pressure line		✓	2.14 mt (4,718 lb) counterweight, light		✓
High-pressure line		✓	2.47 mt (5,445 lb) counterweight	✓	
Quick coupler line		✓	Bottom guards	✓	
SAFETY AND SECURITY			Travel motor guards	✓	
Rear and right-side-view cameras	✓		Center track guiding guards		✓
Hydraulic lock out lever	✓		Tie-down points on base frame	✓	
Ground level engine shutoff switch	✓				
Service platform with anti-skid plate and countersunk bolts	✓				
Signaling/warning horn	✓				
Swing alarm		✓			
Inspection lighting		✓			
Auto Hammer Stop	✓				
SERVICE AND MAINTENANCE					
Grouped engine oil and fuel filters	✓				
Side entry to service platform	✓				
Ground level engine oil dipstick	✓				
Lockable disconnect switch	✓				
Scheduled Oil Sampling (S·O·S SM) ports	✓				
Integrated vehicle health management system	✓				

Dealer Installed Kits and Attachments

Attachments may vary. Consult your Cat dealer for details.

CAB

- Radial lower wiper
- Left-hand and right-hand electrical pedal (two-way) for tool control
- Dual exit rear window kit
- Rain protector plus cab light cover
- Polycarbonate roof hatch
- Front windshield laminated glass (P5A glass, EU demolition regulation)
- Key fob (for use with Bluetooth receiver)

GUARDS

- Operator Protective Guards (OPG) (not compatible with cab light cover, rain protector)
- Mesh guard full front (not compatible with cab light cover, rain protector)
- Mesh guard lower half front
- Full protecting vandalism guard

SAFETY AND SECURITY

- 76 mm (3") retractable seat belt
- Bluetooth receiver

313 GC Environmental Declaration

The following information applies to the machine at the time of final manufacture as configured for sale in the regions covered in this document. The content of this declaration is valid as of the date issued; however, content related to machine features and specifications are subject to change without notice. For additional information, please see the machine's Operation and Maintenance Manual.

For more information on sustainability in action and our progress, please visit <https://www.caterpillar.com/en/company/sustainability>.

Engine

- The Cat® C3.6 engine meets U.S. EPA Tier 4 Final, EU Stage V, and Japan 2014 emission standards.
- Cat diesel engines are required to use ULSD (ultra-low sulfur diesel fuel with 15 ppm of sulfur or less) or ULSD blended with the following lower-carbon intensity fuels** up to:
 - ✓ 20% biodiesel FAME (fatty acid methyl ester)*
 - ✓ 100% renewable diesel, HVO (hydrotreated vegetable oil) and GTL (gas-to-liquid) fuels

Refer to guidelines for successful application. Please consult your Cat dealer or "Caterpillar Machine Fluids Recommendations" (SEBU6250) for details.

**Engines with no aftertreatment devices can use higher blends, up to 100% biodiesel (for use of blends higher than 20% biodiesel, consult your Cat dealer).*

***Tailpipe greenhouse gas emissions from lower-carbon intensity fuels are essentially the same as traditional fuels.*

Air Conditioning System

- The air conditioning system on this machine contains the fluorinated greenhouse gas refrigerant R134a (Global Warming Potential = 1430). The system contains 0.85 kg (1.9 lb) of refrigerant which has a CO₂ equivalent of 1.216 metric tonnes (1.340 tons).

Paint

- Based on best available knowledge, the maximum allowable concentration, measured in parts per million (PPM), of the following heavy metals in paint are:
 - Barium < 0.01%
 - Cadmium < 0.01%
 - Chromium < 0.01%
 - Lead < 0.01%

Sound Performance

ISO 6395:2008 (external)	99 dB(A)
ISO 6396:2008 (inside cab)	68 dB(A)

- Hearing protection may be needed when operating with an open operator station and cab (when not properly maintained or doors/windows open) for extended periods or in a noisy environment.

Oils and Fluids

- Caterpillar factory fills with ethylene glycol coolants. Cat Diesel Engine Antifreeze/Coolant (DEAC) and Cat Extended Life Coolant (ELC) can be recycled. Consult your Cat dealer for more information.
- Cat Bio HYDO™ Advanced is an EU Ecolabel approved biodegradable hydraulic oil.
- Additional fluids are likely to be present, please consult the Operations and Maintenance Manual or the Application and Installation guide for complete fluid recommendations and maintenance intervals.

Features and Technology

- The following features and technology may contribute to fuel savings and/or carbon reduction. Features may vary. Consult your Cat dealer for details.
 - Advanced hydraulic systems balance power and efficiency.
 - Smart mode matches machine power to digging requirements automatically.
 - Eco mode supports reduced fuel consumption for light applications.
 - One-touch low idle with automatic engine speed control
 - Increase operating efficiency with standard Cat technologies that help lower operator fatigue and operating costs.
 - Extended service intervals help decrease maintenance costs.
 - Remote Flash and Remote Troubleshoot

Recycling

- The materials included in machines are categorized as below with approximate weight percentage. Because of variations of product configurations, the following values in the table may vary.

Material Type	Weight Percentage
Steel	82.77%
Iron	4.18%
Nonferrous Metal	1.88%
Mixed Metal	0.30%
Mixed-Metal and Nonmetal	2.50%
Plastic	0.16%
Rubber	3.30%
Mixed Nonmetallic	0.85%
Fluid	2.47%
Other	1.59%
Uncategorized	0.00%
Total	100%

- A machine with higher recyclability rate will ensure more efficient usage of valuable natural resources and enhance End-of-Life value of the product. According to ISO 16714:2008 (Earthmoving machinery – Recyclability and recoverability – Terminology and calculation method), recyclability rate is defined as percentage by mass (mass fraction in percent) of the new machine potentially able to be recycled, reused, or both.

All parts in the bill of material are first evaluated by component type based on a list of components defined by the ISO 16714:2008 and Japan CEMA (Construction Equipment Manufacturers Association) standards. Remaining parts are further evaluated for recyclability based on material type.

Because of variations of product configurations, the following value in the table may vary.

Recyclability – 95%



オフロード法2014年
基準適合



国土交通省指定
低騒音型建設機械

For more complete information on Cat products, dealer services, and industry solutions, visit us on the web at www.cat.com

© 2024 Caterpillar
All rights reserved

Materials and specifications are subject to change without notice. Featured machines in photos may include additional equipment. See your Cat dealer for available options.

CAT, CATERPILLAR, LET'S DO THE WORK, their respective logos, "Caterpillar Corporate Yellow," the "Power Edge" and Cat "Modern Hex" trade dress as well as corporate and product identity used herein, are trademarks of Caterpillar and may not be used without permission. VisionLink is a trademark of Caterpillar Inc., registered in the United States and in other countries.

Based on the Labor, Safety and Health Laws in Japan, employer of small construction equipment are required to provide specific training for all operators on machines with ship weight less than 3 metric ton. For machines greater than 3 metric ton, operator needs to obtain operator license certification from a Government approved registered training school.

AEXQ4091-00 (11-2024)
Build Number: 07H
(Japan)

