



352 UHD

Hydraulic Excavator

Technical Specifications

Configurations and features may vary by region. Please consult your Cat® dealer for availability in your area.

Table of Contents

Specifications	2
Engine	2
Engine rpm	2
Swing Mechanism	2
Weights	2
Track	2
Drive	3
Hydraulic System	3
Service Refill Capacities	3
Standards	3
Sound Performance	3
Air Conditioning System	3
Operating Weights and Ground Pressures	4
Major Component Weights	5
Dimensions	6
Working Ranges and Forces	12
Retrofit Boom (straight position)	16
Retrofit Boom (bent position)	20
Bucket Specifications and Compatibility:	
Europe	24
Japan	25
North America	26
Attachments Offering Guide:	
Europe	28
Japan	34
North America	35
Standard and Optional Equipment	39
Dealer Installed Kit and Attachments	41
352 UHD Environmental Declaration	42

352 UHD Hydraulic Excavator Specifications

Engine

Engine Model	Cat® C13B	
Net Power		
ISO 9249	330.0 kW	443 hp
ISO 9249 (DIN)	448.7 hp (metric)	
Engine Power		
ISO 14396	332.0 kW	445 hp
ISO 14396 (DIN)	451.4 hp (metric)	
Bore	130 mm	5 in
Stroke	157 mm	6 in
Displacement	12.5 L	763 in ³

- Meets U.S. EPA Tier 4 Final, EU Stage V, and Japan 2014 emission standards.
- Recommended for use up to 4500 m (14,760 ft) altitude with engine power derate above 2600 m (8,530 ft).
- Advertised power is tested per the specified standard in effect at the time of manufacture.
- Net power advertised is the power available at the flywheel when the engine is equipped with fan, air intake system, exhaust system and alternator.
- Engine speed at 1,700 rpm.
- Cat diesel engines are required to use ULSD (ultra-low sulfur diesel fuel with 15 ppm of sulfur or less) or ULSD blended with the following lower-carbon intensity fuels** up to:
 - ✓ 20% biodiesel FAME (fatty acid methyl ester)*
 - ✓ 100% renewable diesel, HVO (hydrotreated vegetable oil) and GTL (gas-to-liquid) fuels

Refer to guidelines for successful application. Please consult your Cat dealer or “Caterpillar Machine Fluids Recommendations” (SEBU6250) for details.

**Engines with no aftertreatment devices can use higher blends, up to 100% biodiesel (for use of blends higher than 20% biodiesel, consult your Cat dealer).*

***Tailpipe greenhouse gas emissions from lower-carbon intensity fuels are essentially the same as traditional fuels.*

Swing Mechanism

Swing Speed* (Ultra High Demolition [UHD])	4.40 rpm	
Swing Speed* (Retrofit)	8.30 rpm	
Maximum Swing Torque	189 kN·m	139,000 lbf·ft

* For CE-marked machine default value may be set lower.

Weights

Operating Weight	64 500 kg	142,200 lb
------------------	-----------	------------

- Hydraulic Variable Gauge (HVG) undercarriage, UHD fronts, 600 mm (24") triple grouser shoes and 12.0 mt (26,455 lb) counterweight.

Operating Weight	65 100 kg	143,500 lb
------------------	-----------	------------

- Hydraulic Variable Gauge undercarriage, UHD fronts, 700 mm (28") triple grouser shoes and 12.0 mt (26,455 lb) counterweight.

Operating Weight	63 000 kg	138,900 lb
------------------	-----------	------------

- Hydraulic Variable Gauge undercarriage, Retrofit fronts, R3.35TB (10'6") stick, Heavy Duty (HD) 2.41 m³ (3.15 yd³) bucket, 600 mm (24") triple grouser shoes and 12.0 mt (26,455 lb) counterweight.

Operating Weight	63 100 kg	139,100 lb
------------------	-----------	------------

- Hydraulic Variable Gauge undercarriage, Retrofit fronts, R3.9TB (12'10") stick, HD 2.41 m³ (3.15 yd³) bucket, 600 mm (24") triple grouser shoes and 12.0 mt (26,455 lb) counterweight.

Operating Weight	64 600 kg	142,400 lb
------------------	-----------	------------

- Hydraulic Variable Gauge undercarriage, Retrofit fronts, 600 mm (24") triple grouser shoes and 11.35 mt (25,022 lb) removable counterweight.

Operating Weight	65 100 kg	143,500 lb
------------------	-----------	------------

- Hydraulic Variable Gauge undercarriage, Retrofit fronts, 700 mm (28") triple grouser shoes, 11.35 mt (25,022 lb) removable counterweight.

Operating Weight	63 100 kg	139,100 lb
------------------	-----------	------------

- Hydraulic Variable Gauge undercarriage, Retrofit fronts, R3.35TB (10'6") stick, HD 2.41 m³ (3.15 yd³) bucket, 600 mm (24") triple grouser shoes and 11.35 mt (25,022 lb) removable counterweight.

Operating Weight	63 200 kg	139,300 lb
------------------	-----------	------------

- Hydraulic Variable Gauge undercarriage, Retrofit fronts, R3.9TB (12'10") stick, HD 2.41 m³ (3.15 yd³) bucket, 600 mm (24") triple grouser shoes and 11.35 mt (25,022 lb) removable counterweight.

Track

Optional Track Shoes Width	600 mm	24 in
----------------------------	--------	-------

Optional Track Shoes Width	700 mm	28 in
----------------------------	--------	-------

Number of Shoes (each side)	56	
-----------------------------	----	--

Number of Track Rollers (each side)	10	
-------------------------------------	----	--

Number of Carrier Rollers (each side)	3 (Long Undercarriage-Variable Gauge [LC-VG])	
---------------------------------------	---	--

352 UHD Hydraulic Excavator Specifications

Drive

Maximum Gradeability	35°/70%	
Maximum Travel Speed	4.5 km/h	2.8 mph
Maximum Drawbar Pull	340 kN	76,435 lbf

Hydraulic System

Main System – Maximum Flow – Implement	779 L/min (389 × 2 pumps)	206 gal/min (103 × 2 pumps)
Maximum Pressure – Equipment – Implement	35 000 kPa	5,076 psi
Maximum Pressure – Equipment – Lift Mode	38 000 kPa	5,511 psi
Maximum Pressure – Travel	35 000 kPa	5,076 psi
Maximum Pressure – Swing	26 000 kPa	3,771 psi
Base Boom Cylinder – Bore	170 mm	7 in
Base Boom Cylinder – Stroke	1524 mm	60 in
Fore Boom Cylinder – Bore	190 mm	7 in
Fore Boom Cylinder – Stroke	1758 mm	69 in
UHD Stick Cylinder – Bore	170 mm	7 in
UHD Stick Cylinder – Stroke	1550 mm	61 in
UHD Bucket Cylinder – Bore	140 mm	6 in
UHD Bucket Cylinder – Stroke	1100 mm	43 in
Retrofit Front Stick Cylinder – Bore	190 mm	7 in
Retrofit Front Stick Cylinder – Stroke	1758 mm	69 in
TB Bucket Cylinder – Bore	160 mm	6 in
TB Bucket Cylinder – Stroke	1356 mm	53 in

Service Refill Capacities

Fuel Tank Capacity	715 L	188.9 gal
Cooling System	52 L	13.7 gal
Engine Oil (with filter)	40 L	10.6 gal
Swing Drive	10.5 L	2.8 gal
Final Drive (each)	9.5 L	2.5 gal
Hydraulic System (including tank)	550 L	145.3 gal
Hydraulic Tank (including suction pipe)	217 L	57.3 gal
Diesel Exhaust Fluid (DEF) Tank	80 L	21.1 gal

Standards

Brakes	ISO 10265:2008
Cab/Operator Protective Guards (OPG)	ISO 10262:1998 Level II

Sound Performance

ISO 6395:2008 (external)	108 dB(A)
ISO 6396:2008 (inside cab)	72 dB(A)

- Hearing protection may be needed when operating with an open operator station and cab (when not properly maintained or doors/windows open) for extended periods or in a noisy environment.

Air Conditioning System

The air conditioning system on this machine contains the fluorinated greenhouse gas refrigerant R134a (Global Warming Potential = 1430). The system contains 1.00 kg of refrigerant which has a CO₂ equivalent of 1.430 metric tonnes.

352 UHD Hydraulic Excavator Specifications

Operating Weights and Ground Pressures

Base Machine Configurations	600 mm (24") Triple Grouser Shoes		700 mm (28") Triple Grouser Shoes	
	Weight	Ground Pressure	Weight	Ground Pressure
	kg (lb)	kPa (psi)	kg (lb)	kPa (psi)
Base Frame with Single Flange Track Rollers and Carrier Rollers				
12.0 mt (26,455 lb) Counterweight + Hydraulic Variable Gauge Undercarriage				
UHD Front (base boom, nose boom, fore boom) + 9.1 m (29'10") Dedicated C UHD Stick	64 500 (142,200)	102.9 (14.9)	65 100 (143,500)	89 (12.9)
Retrofit Front (base boom, retrofit boom) + R3.35 m TB (11'0") Reach Stick + 2.41 m ³ (3.16 yd ³) HD Bucket	63 000 (138,900)	100.5 (14.6)	63 500 (140,000)	86.8 (12.6)
Retrofit Front (base boom, retrofit boom) + R3.35 m TB (11'0") Reach Stick + 3.08 m ³ (4.03 yd ³) General Duty (GD) Bucket	63 200 (139,300)	100.8 (14.6)	63 800 (134,200)	87.2 (12.6)
Retrofit Front (base boom, retrofit boom) + R3.35 m TB (11'0") Reach Stick + 2.10 m ³ (2.75 yd ³) Heavy Duty Excavation (HDX) Bucket	63 200 (139,300)	100.8 (14.6)	63 800 (140,700)	87.2 (12.6)
Retrofit Front (base boom, retrofit boom) + R3.9 m TB (12'1") Reach Stick + 3.08 m ³ (4.03 yd ³) GD Bucket	63 100 (139,100)	100.6 (14.6)	63 700 (140,400)	87.1 (12.6)
Retrofit Front (base boom, retrofit boom) + R3.9 m TB (12'1") Reach Stick + 3.08 m ³ (4.03 yd ³) GD Bucket	63 400 (139,800)	101.1 (14.7)	63 900 (140,900)	87.4 (12.7)
UHD Front (base boom, nose boom, fore boom) + 9.1 m (29'10") Dedicated C UHD Stick	64 600 (142,400)	103 (14.9)	65 100 (143,500)	88.9 (12.9)
Retrofit Front (base boom, retrofit boom) + R3.35 m TB (11'0") Reach Stick + 2.41 m ³ (3.16 yd ³) HD Bucket	63 100 (139,100)	100.6 (14.6)	63 600 (140,200)	86.9 (12.6)
Retrofit Front (base boom, retrofit boom) + R3.35 m TB (11'0") Reach Stick + 3.08 m ³ (4.03 yd ³) General Duty (GD) Bucket	63 300 (139,600)	101 (14.6)	63 800 (140,700)	87.2 (12.6)
Retrofit Front (base boom, retrofit boom) + R3.35 m TB (11'0") Reach Stick + 2.10 m ³ (2.75 yd ³) Heavy Duty Excavation (HDX) Bucket	63 300 (139,600)	101 (14.6)	63 900 (140,900)	87.3 (12.6)
Retrofit Front (base boom, retrofit boom) + R3.9 m TB (12'1") Reach Stick + 3.08 m ³ (4.03 yd ³) GD Bucket	63 200 (139,300)	100.8 (14.6)	63 700 (140,400)	87.0 (12.6)
Retrofit Front (base boom, retrofit boom) + R3.9 m TB (12'1") Reach Stick + 3.08 m ³ (4.03 yd ³) GD Bucket	63 400 (139,800)	101.1 (14.7)	64 000 (141,100)	102.0 (14.8)

All operating weights include a 90% fuel tank with 75 kg (165 lb) operator.

352 UHD Hydraulic Excavator Specifications

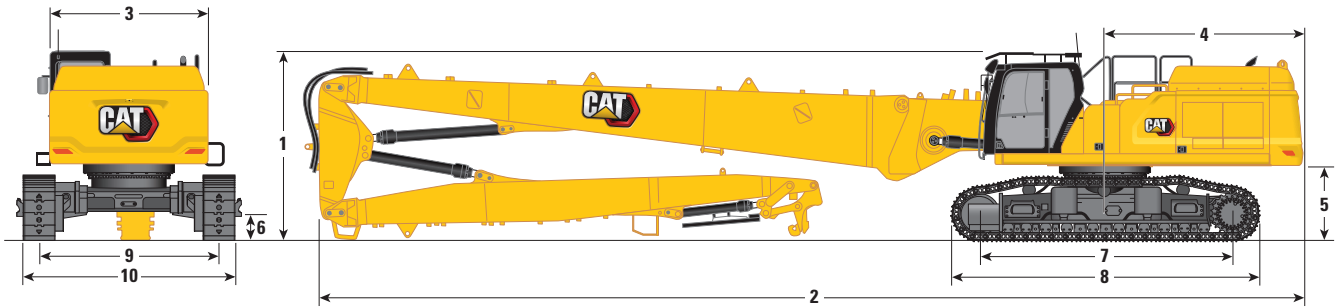
Major Component Weights

	kg	lb
Base Machine Weight: including upperframe, undercarriage, counterweight, hydraulic oil (184 kg/406 lb) and DEF (49 kg/108 lb), without base boom, boom cylinders, UHD fronts or Retrofit fronts, fuel (612 kg/1,349 lb) and operator (75 kg/165 lb)		
With 12.0 mt (26,455 lb) Counterweight, UHD Swing Frame, Base Frame with Single Flange (SF) Track Rollers and Carrier Rollers for Hydraulic Variable Gauge (HVG) Undercarriage	43 680	96,300
With 11.35 mt (25,022 lb) Counterweight, Counterweight Removal Swing Frame, Base Frame with SF Track Rollers and Carrier Rollers for Hydraulic Variable Gauge (HVG) Undercarriage	43 750	96,440
Track Shoes:		
600 mm (24") Width, 15.5 mm (0.6") Thick, Triple Grouser Track Shoes	5700	12,560
700 mm (28") Width, 15.5 mm (0.6") Thick, Triple Grouser Track Shoes	6240	13,750
Two Boom Cylinders	960	2,130
Weight of 90% Fuel Tank and 75 kg (165 lb) Operator	630	1,380
Counterweight:		
12.0 mt (26,455 lb) Counterweight	12 000	26,460
11.35 mt (25,022 lb) Removable Counterweight	11 350	25,020
Swing Frame:		
UHD Swing Frame	4360	9,610
Counterweight Removable Swing Frame	4400	9,690
Hydraulic Variable Gauge Undercarriage:		
Base Frame with SF Track Rollers and Carrier Rollers for Hydraulic Variable Gauge Undercarriage	18 700	41,230
Booms (including lines, pins, stick cylinder):		
UHD and Retrofit Base Boom	3210	7,070
UHD Nose Boom	4980	10,970
UHD Fore Boom Cylinder	660	1,450
UHD Fore Boom	1150	2,540
UHD Stick Cylinder	460	1,010
Retrofit Boom	3850	8,480
Sticks (including lines, pins, bucket cylinder, bucket linkage):		
9.1 m (29'10") UHD Stick	3100	6,840
R3.9TB (12'10") Reach Stick + Bucket (BKT) Cylinder Guard	2890	6,370
R3.35TB (11'0") Reach Stick + BKT Cylinder Guard	2740	6,040
R2.9TB (9'6") Reach Stick	2430	5,350
Buckets for Retrofit Fronts (without linkage):		
2.10 m ³ (2.75 yd ³) Heavy Duty Excavation (HDX) for TB	2490	5,490
3.08 m ³ (4.03 yd ³) General Duty (GD) for TB	2470	5,450
2.41 m ³ (3.16 yd ³) HD for TB	2230	4,930
Quick Couplers (QC):		
CW Dedicated QC for UHD	310	680
Pin Grabber QC for UHD	—	—
CW Dedicated QC	770	1,690
Pin Grabber QC	1060	2,340
Fronts with Cradle:		
UHD Front in Cradle	11 800	26,000
Retrofit Boom – R3.9TB (12'10") Stick in Cradle	7630	16,820
Retrofit Boom – R3.35 m (11'0") Stick in Cradle	7460	16,440
Retrofit Boom – R2.9 m (9'6") Stick in Cradle	7150	15,760
Cradle For UHD front or Retrofit front with R3.35 or R2.9	870	1,930
Cradle For Retrofit front with R3.9	890	1,970

352 UHD Hydraulic Excavator Specifications

Dimensions

All dimensions are approximate and may vary depending on bucket selection.



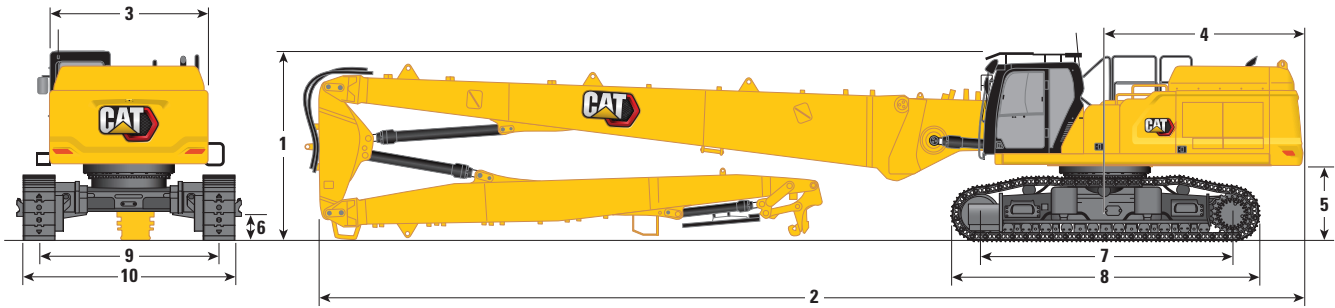
Boom Option Stick Option	UHD Boom	
	UHD Stick	9.1 m (29'10")
1 Machine Height:		
Cab Height	3390 mm	11'1"
OPG Height	3592 mm	11'9"
Handrail Height	3495 mm	11'5"
With Boom/Stick (no work tool)	3300 mm	10'9"
With Boom/Stick (with auxiliary lines) (no work tool)	3300 mm	10'9"
2 Machine Length:		
With Boom/Stick (no work tool)	18 830 mm	61'9"
With Boom/Stick (with auxiliary lines) (no work tool)	18 830 mm	61'9"
Base Machine with Base Boom only (without counterweight)	7600 mm	24'11"
Base Machine with Base Boom only (with counterweight)	7770 mm	25'5"
3 Upperframe Width without Handles	3020 mm	9'10"
4 Tail Swing Radius	3760 mm	12'4"
5 Counterweight Clearance without Shoe Lug	1400 mm	4'7"
Counterweight Clearance with Shoe Lug	1435 mm	4'8"
6 Ground Clearance without Shoe Lug	510 mm	1'8"
7 Length to Center of Rollers	4770 mm	15'7"

(continued on next page)

352 UHD Hydraulic Excavator Specifications

Dimensions (continued)

All dimensions are approximate and may vary depending on bucket selection.

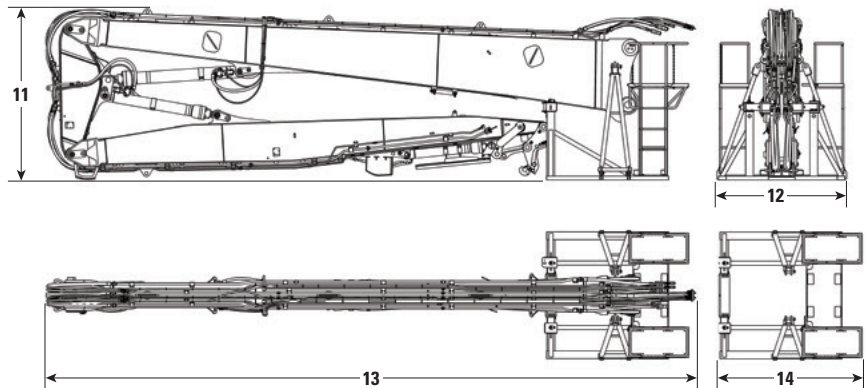


Boom Option Stick Option	UHD Boom	
	UHD Stick	
	9.1 m (29'10")	
8 Track Length	5770 mm	18'11"
9 Track Gauge:		
Retracted	2400 mm	7'10"
Extended	3400 mm	11'1"
10 Undercarriage Width – Retracted (with steps):		
600 mm (24") Shoes	3255 mm	10'8"
700 mm (28") Shoes	3255 mm	10'8"
Undercarriage Width – Retracted (without steps):		
600 mm (24") Shoes	3000 mm	9'10"
700 mm (28") Shoes	3100 mm	10'2"
Undercarriage Width – Extended (with steps):		
600 mm (24") Shoes	4255 mm	13'11"
700 mm (28") Shoes	4255 mm	13'11"
Undercarriage Width – Extended (without steps):		
600 mm (24") Shoes	4000 mm	13'1"
700 mm (28") Shoes	4100 mm	13'5"

Transportation Dimensions: UHD Front

	9.1 m (29'10")	
11 Height*	3300 mm	10'9"
12 Width*	2500 mm	8'2"
13 Length*	12 390 mm	40'7"
14 Length of Cradle only	2784 mm	9'1"

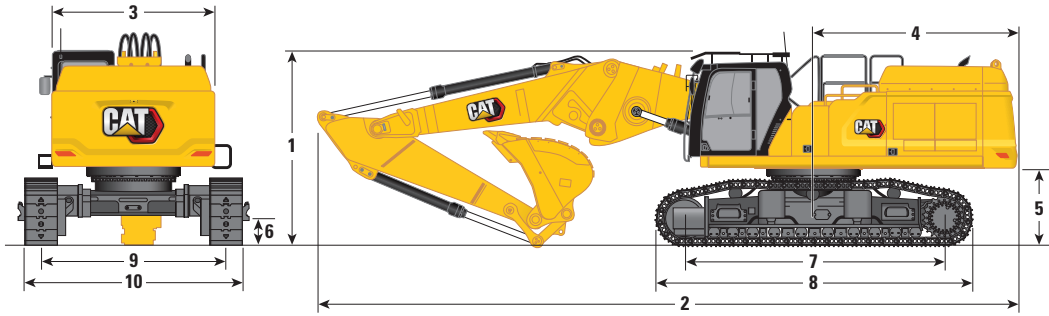
*with or without quick coupler



352 UHD Hydraulic Excavator Specifications

Dimensions

All dimensions are approximate and may vary depending on bucket selection.



Boom Option

Retrofit Boom Straight Position

Stick Options

Retrofit Stick

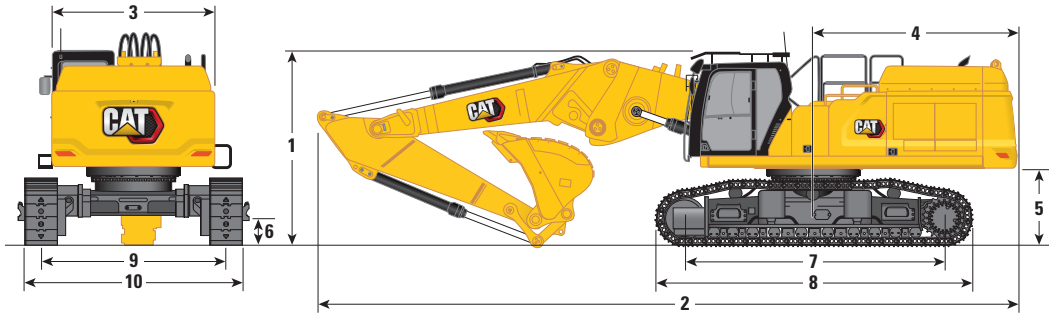
	R3.9TB (12'10")		R3.35TB (11'0")	
1 Machine Height:				
Cab Height	3390 mm	11'1"	3390 mm	11'1"
OPG Height	3592 mm	11'9"	3592 mm	11'9"
Handrail Height	3495 mm	11'5"	3495 mm	11'5"
With Boom/Stick/Bucket Installed	4140 mm	13'6"	3950 mm	12'11"
With Boom/Stick/Bucket Installed (with auxiliary lines)	4140 mm	13'6"	3950 mm	12'11"
2 Machine Length:				
With Boom/Stick/Bucket Installed	12 700 mm	41'8"	12 820 mm	42'0"
With Boom/Stick/Bucket Installed (with auxiliary lines)	12 700 mm	41'8"	12 820 mm	42'0"
Base Machine with Base Boom only (without counterweight)	7600 mm	24'11"	7600 mm	24'11"
Base Machine with Base Boom only (with counterweight)	7770 mm	25'5"	7770 mm	25'5"
3 Upperframe Width without Handles	3020 mm	9'10"	3020 mm	9'10"
4 Tail Swing Radius	3760 mm	12'4"	3760 mm	12'4"
5 Counterweight Clearance without Shoe Lug	1400 mm	4'7"	1400 mm	4'7"
Counterweight Clearance with Shoe Lug	1435 mm	4'8"	1435 mm	4'8"
6 Ground Clearance without Shoe Lug	510 mm	1'8"	510 mm	1'8"
7 Length to Center of Rollers	4770 mm	15'7"	4770 mm	15'7"
Bucket Type	GD		GD	
Bucket Capacity	3.08 m ³	4.03 yd ³	3.08 m ³	4.03 yd ³
Bucket Tip Radius	1888 mm	6'2"	1888 mm	6'2"

(continued on next page)

352 UHD Hydraulic Excavator Specifications

Dimensions *(continued)*

All dimensions are approximate and may vary depending on bucket selection.



Boom Option

Retrofit Boom Straight Position

Stick Options

Retrofit Stick

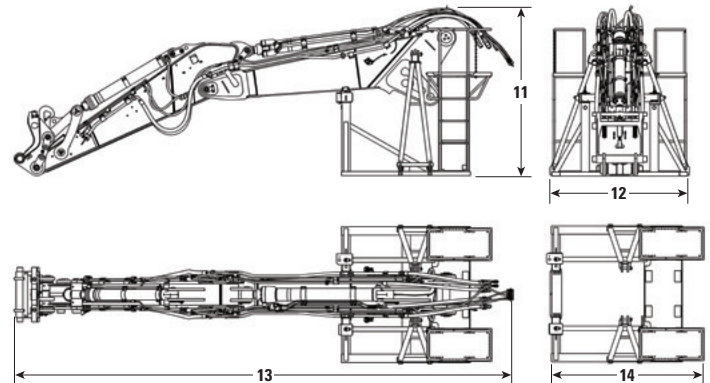
	R3.9TB (12'10")		R3.35TB (11'0")	
	mm	ft/in	mm	ft/in
8 Track Length	5770 mm	18'11"	5770 mm	18'11"
9 Track Gauge:				
Retracted	2400 mm	7'10"	2400 mm	7'10"
Extended	3400 mm	11'1"	3400 mm	11'1"
10 Undercarriage Width – Retracted (with steps):				
600 mm (24") Shoes	3255 mm	10'8"	3255 mm	10'8"
700 mm (28") Shoes	3255 mm	10'8"	3255 mm	10'8"
Undercarriage Width – Retracted (without steps):				
600 mm (24") Shoes	3000 mm	9'10"	3000 mm	9'10"
700 mm (28") Shoes	3100 mm	10'2"	3100 mm	10'2"
Undercarriage Width – Extended (with steps):				
600 mm (24") Shoes	4255 mm	13'11"	4255 mm	13'11"
700 mm (28") Shoes	4255 mm	13'11"	4255 mm	13'11"
Undercarriage Width – Extended (without steps):				
600 mm (24") Shoes	4000 mm	13'1"	4000 mm	13'1"
700 mm (28") Shoes	4100 mm	13'5"	4100 mm	13'5"
Bucket Type	GD		GD	
Bucket Capacity	3.08 m ³	4.03 yd ³	3.08 m ³	4.03 yd ³
Bucket Tip Radius	1888 mm	6'2"	1888 mm	6'2"

Transportation Dimensions:

Retrofit Front – Straight Position

	R3.9TB (12'10")	R3.35TB (11'0")	R2.9TB (9'6")
11 Height*	3000 mm 9'10"	2700 mm 8'10"	2700 mm 8'10"
12 Width*	2500 mm 8'2"	2500 mm 8'2"	2500 mm 8'2"
13 Length*	9110 mm 29'10"	8580 mm 28'1"	8110 mm 26'7"
14 Length of Cradle only	2784 mm 9'1"	2784 mm 9'1"	2784 mm 9'1"

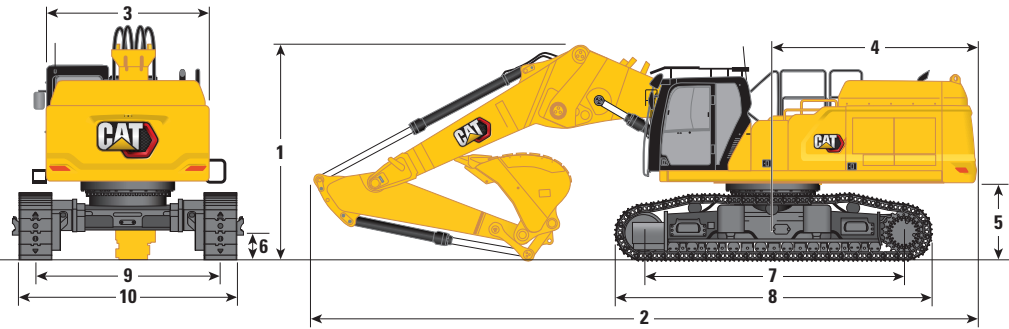
*including quick coupler



352 UHD Hydraulic Excavator Specifications

Dimensions

All dimensions are approximate and may vary depending on bucket selection.



Boom Option

Retrofit Boom Bent Position

Stick Options

Retrofit Stick

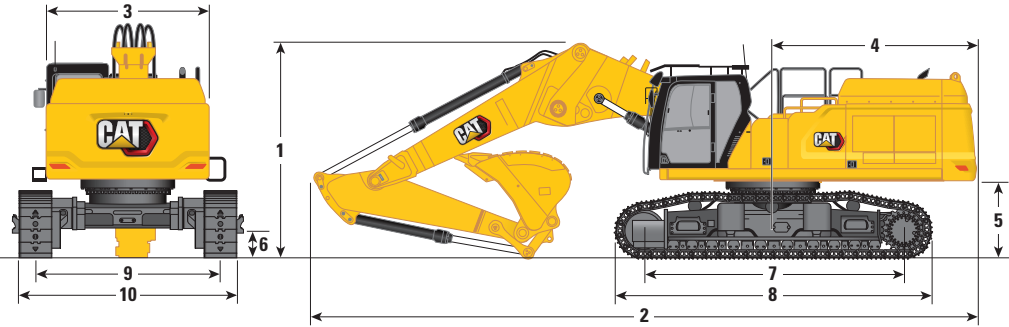
	R3.9TB (12'10")		R3.35TB (11'0")	
1 Machine Height:				
Cab Height	3390 mm	11'1"	3390 mm	11'1"
OPG Height	3592 mm	11'9"	3592 mm	11'9"
Handrail Height	3495 mm	11'5"	3495 mm	11'5"
With Boom/Stick/Bucket Installed	4330 mm	14'2"	4250 mm	13'11"
With Boom/Stick/Bucket Installed (with auxiliary lines)	4330 mm	14'2"	4250 mm	13'11"
2 Machine Length:				
With Boom/Stick/Bucket Installed	12 170 mm	39'11"	12 030 mm	39'5"
With Boom/Stick/Bucket Installed (with auxiliary lines)	12 170 mm	39'11"	12 030 mm	39'5"
Base Machine with Base Boom only (without counterweight)	7600 mm	24'11"	7600 mm	24'11"
Base Machine with Base Boom only (with counterweight)	7770 mm	25'5"	7770 mm	25'5"
3 Upperframe Width without Handles	3020 mm	9'10"	3020 mm	9'10"
4 Tail Swing Radius	3760 mm	12'4"	3760 mm	12'4"
5 Counterweight Clearance without Shoe Lug	1400 mm	4'7"	1400 mm	4'7"
Counterweight Clearance with Shoe Lug	1435 mm	4'8"	1435 mm	4'8"
6 Ground Clearance without Shoe Lug	510 mm	1'8"	510 mm	1'8"
7 Length to Center of Rollers	4770 mm	15'7"	4770 mm	15'7"
Bucket Type	GD		GD	
Bucket Capacity	3.08 m ³	4.03 yd ³	3.08 m ³	4.03 yd ³
Bucket Tip Radius	1888 mm	6'2"	1888 mm	6'2"

(continued on next page)

352 UHD Hydraulic Excavator Specifications

Dimensions (continued)

All dimensions are approximate and may vary depending on bucket selection.



Boom Option

Retrofit Boom Bent Position

Stick Options

Retrofit Stick

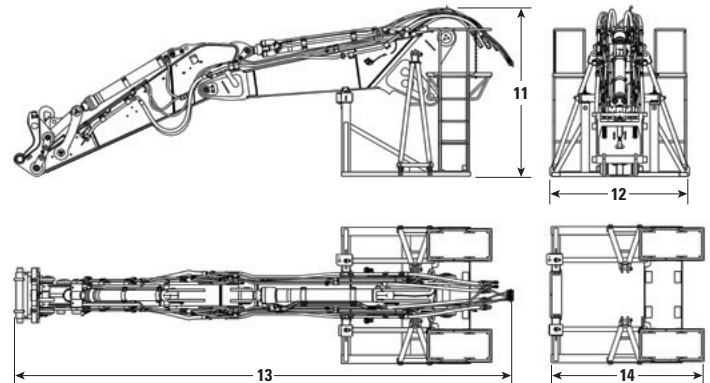
	R3.9TB (12'10")		R3.35TB (11'0")	
8 Track Length	5770 mm	18'11"	5770 mm	18'11"
9 Track Gauge:				
Retracted	2400 mm	7'10"	2400 mm	7'10"
Extended	3400 mm	11'1"	3400 mm	11'1"
10 Undercarriage Width – Retracted (with steps):				
600 mm (24") Shoes	3255 mm	10'8"	3255 mm	10'8"
700 mm (28") Shoes	3255 mm	10'8"	3255 mm	10'8"
Undercarriage Width – Retracted (without steps):				
600 mm (24") Shoes	3000 mm	9'10"	3000 mm	9'10"
700 mm (28") Shoes	3100 mm	10'2"	3100 mm	10'2"
Undercarriage Width – Extended (with steps):				
600 mm (24") Shoes	4255 mm	13'11"	4255 mm	13'11"
700 mm (28") Shoes	4255 mm	13'11"	4255 mm	13'11"
Undercarriage Width – Extended (without steps):				
600 mm (24") Shoes	4000 mm	13'1"	4000 mm	13'1"
700 mm (28") Shoes	4100 mm	13'5"	4100 mm	13'5"
Bucket Type	GD		GD	
Bucket Capacity	3.08 m ³	4.03 yd ³	3.08 m ³	4.03 yd ³
Bucket Tip Radius	1888 mm	6'2"	1888 mm	6'2"

Transportation Dimensions:

Retrofit Front – Bent Position

	R3.9TB (12'10")		R3.35TB (11'0")	
11 Height*	3000 mm	9'10"	2700 mm	8'10"
12 Width*	2500 mm	8'2"	2500 mm	8'2"
13 Length*	9110 mm	29'10"	8580 mm	28'1"
14 Length of Cradle only	2784 mm	9'1"	2784 mm	9'1"

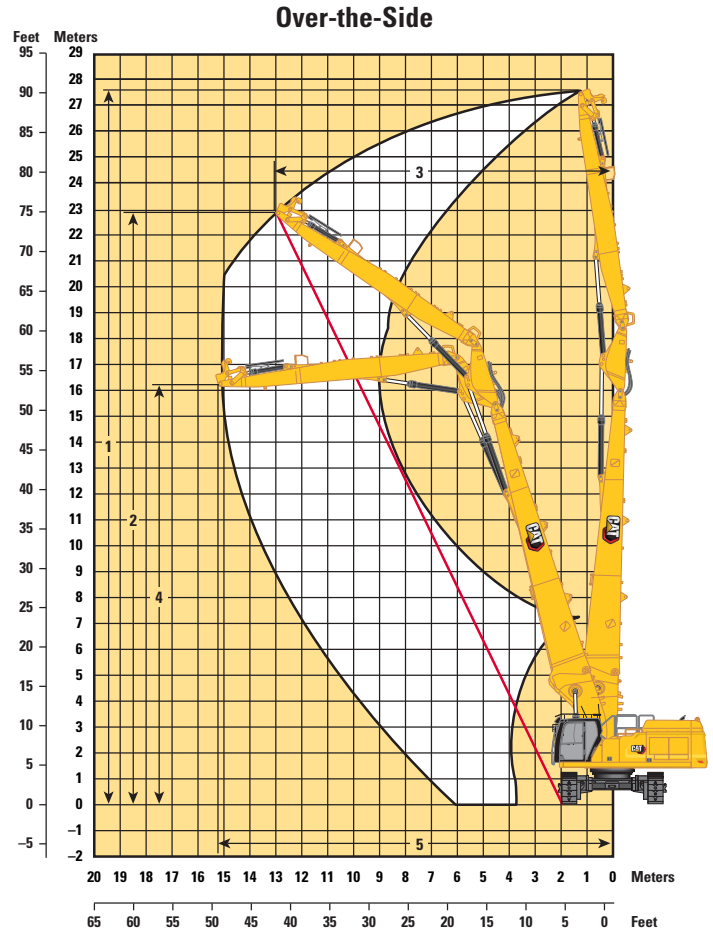
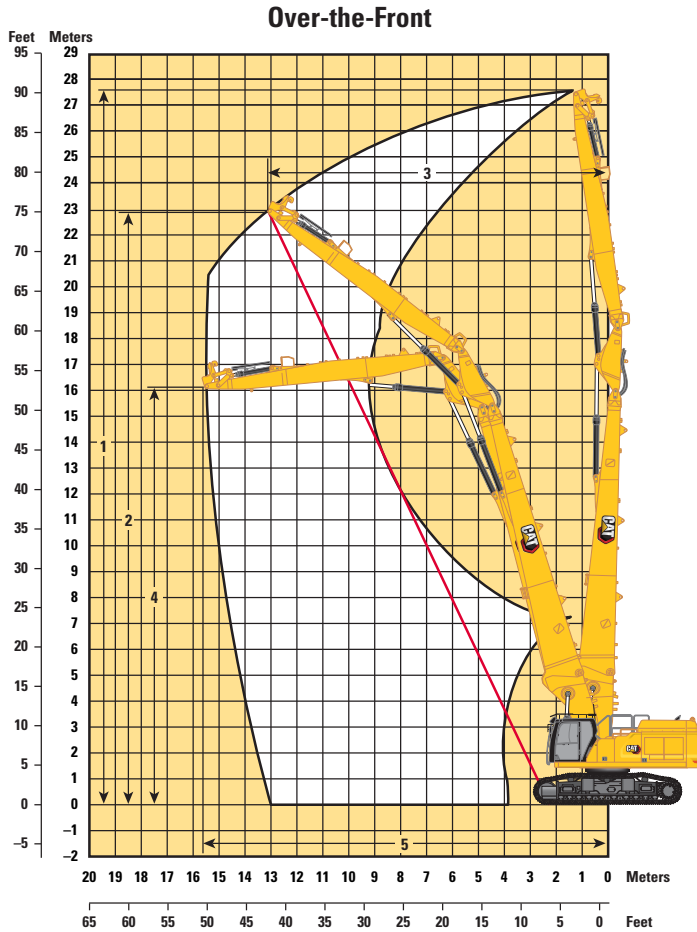
*including quick coupler



352 UHD Hydraulic Excavator Specifications

Working Ranges and Forces

All dimensions are approximate and may vary depending on bucket selection.



Boom Option

Stick Option

UHD Boom

UHD Stick

9.1 m (29'10")

Over-the-Front:

1 Maximum Pin Height at Stick Nose	27 670 mm	90'9"
Maximum Weight at Stick Nose	3700 kg	8,157 lb
2 Maximum Working Pin Height at Stick Nose – 1/2	22 930 mm	75'2"
3 Maximum Working Reach at Stick Nose – 1/2	13 850 mm	45'5"
4 Maximum Height at Stick Nose in Maximum Reach Position	16 110 mm	52'10"
5 Maximum Reach at Stick Nose	15 770 mm	51'9"

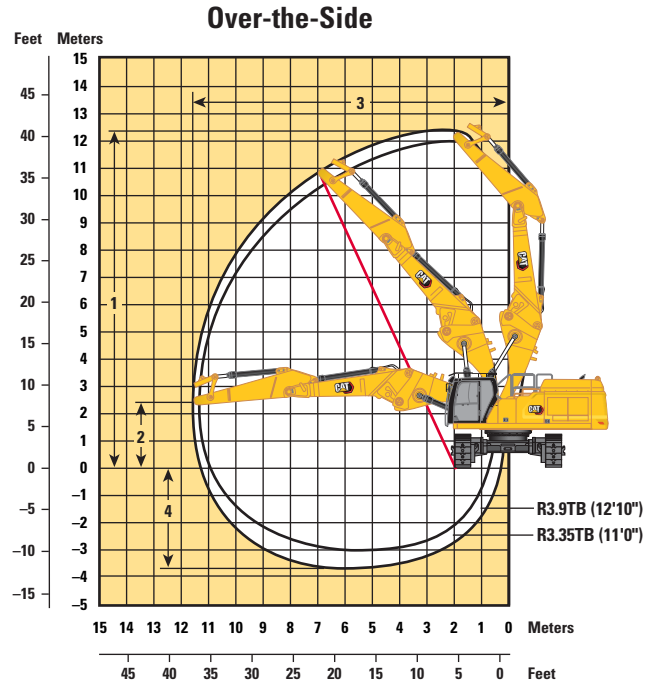
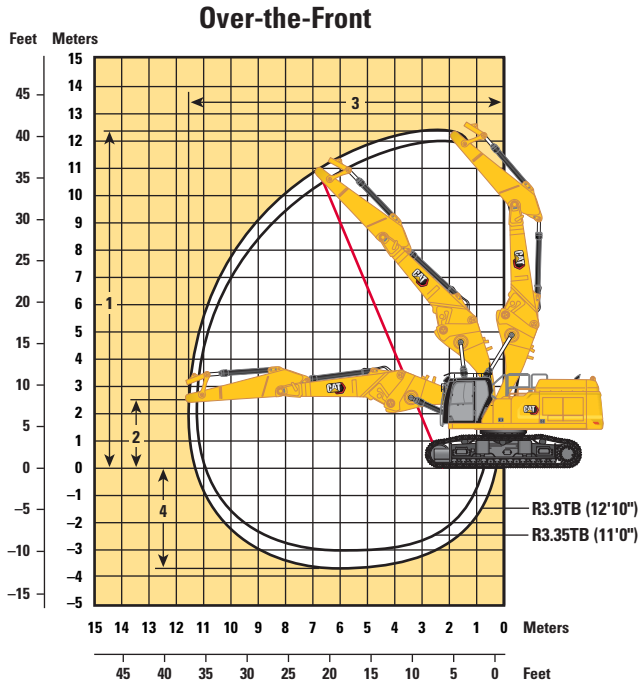
Over-the-Side:

1 Maximum Pin Height at Stick Nose	27 670 mm	90'9"
Maximum Weight at Stick Nose	3700 kg	8,157 lb
2 Maximum Working Pin Height at Stick Nose – 1/2	23 230 mm	76'2"
3 Maximum Working Reach at Stick Nose – 1/2	13 315 mm	43'8"
4 Maximum Height at Stick Nose in Maximum Reach Position	16 220 mm	53'2"
5 Maximum Reach at Stick Nose	15 210 mm	49'10"

352 UHD Hydraulic Excavator Specifications

Working Ranges and Forces

All dimensions are approximate and may vary depending on bucket selection.



Boom Option

Retrofit Boom

Straight Position

Stick Options

R3.9TB (12'10")

R3.35TB (11'0")

Over-the-Front:

1 Maximum Pin Height at Stick Nose	12 350 mm	40'6"	12 130 mm	39'10"
Maximum Weight at Stick Nose	5440 kg	11,990 lb	5820 kg	12,830 lb
2 Height at Stick Nose in Maximum Reach Position	2337 mm	7'8"	2337 mm	7'8"
3 Maximum Reach at Stick Nose	11 580 mm	37'11"	11 130 mm	36'6"
4 Maximum Depth at Stick Nose	3840 mm	12'7"	3290 mm	10'10"

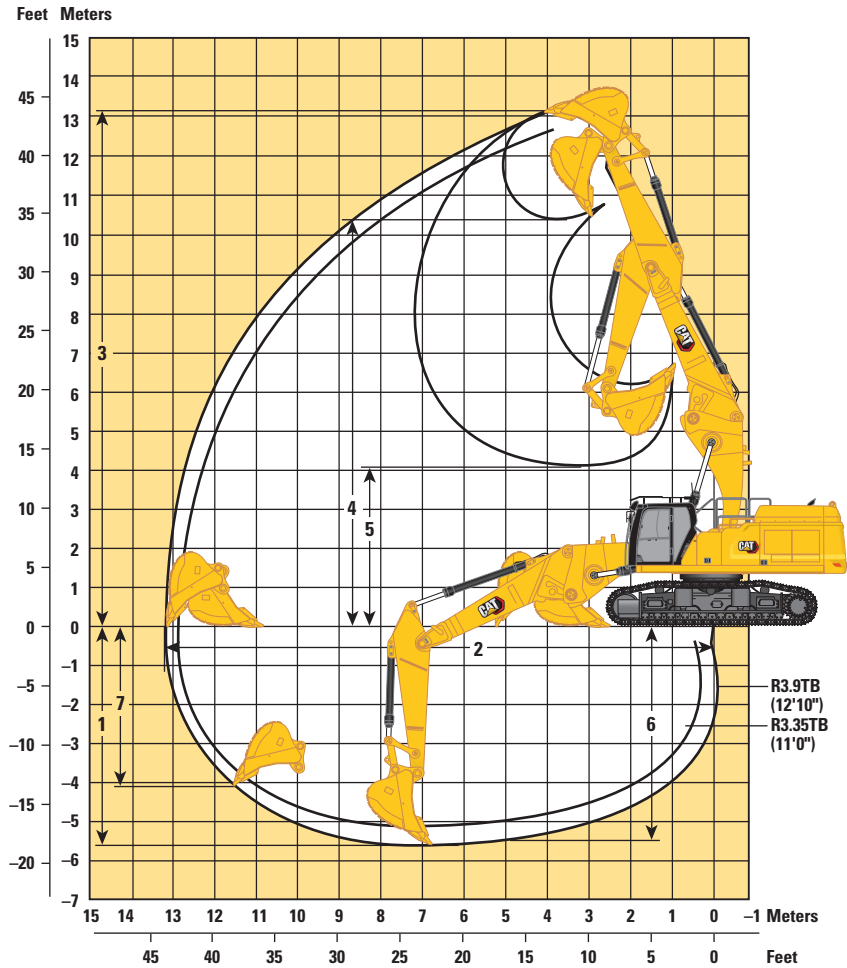
Over-the-Side:

1 Maximum Pin Height at Stick Nose	12 350 mm	40'6"	12 130 mm	39'10"
Maximum Weight at Stick Nose	5440 kg	11,990 lb	5820 kg	12,830 lb
2 Height at Stick Nose in Maximum Reach Position	2337 mm	7'8"	2337 mm	7'8"
3 Maximum Reach at Stick Nose	11 580 mm	37'11"	11 130 mm	36'6"
4 Maximum Depth at Stick Nose	3840 mm	12'7"	3290 mm	10'10"

352 UHD Hydraulic Excavator Specifications

Working Ranges and Forces

All dimensions are approximate and may vary depending on bucket selection.



Boom Option

Retrofit Boom Straight Position

Stick Options

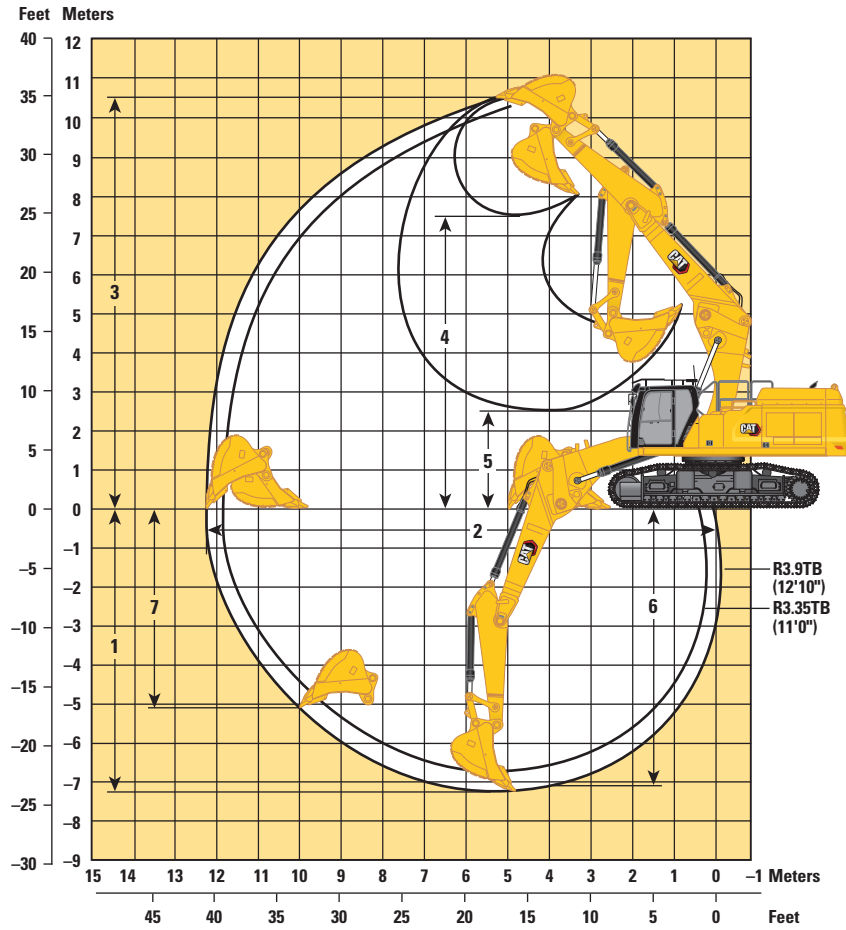
Retrofit Stick

	R3.9TB (12'10")		R3.35TB (11'0")	
	mm	ft/in	mm	ft/in
1 Maximum Digging Depth	5730	18'9"	5180	16'11"
2 Maximum Reach at Ground Line	13 260	43'6"	12 790	41'11"
3 Maximum Cutting Height	14 070	46'1"	13 900	45'7"
4 Maximum Loading Height	10 460	34'3"	10 250	33'7"
5 Minimum Loading Height	4040	13'3"	4580	15'0"
6 Maximum Depth Cut for 2440 mm (8 ft) Level Bottom	5600	18'4"	5030	16'6"
7 Maximum Vertical Wall Digging Depth	4610	15'1"	4110	13'5"
Bucket Digging Force (ISO)	268 kN	60,250 lbf	268 kN	60,250 lbf
Stick Digging Force (ISO)	183 kN	41,140 lbf	199 kN	44,740 lbf
Bucket Type	GD		GD	
Bucket Capacity	3.08 m ³	4.03 yd ³	3.08 m ³	4.03 yd ³
Bucket Tip Radius	1888 mm	6'2"	1888 mm	6'2"

352 UHD Hydraulic Excavator Specifications

Working Ranges and Forces

All dimensions are approximate and may vary depending on bucket selection.

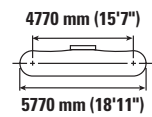
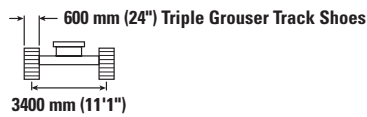
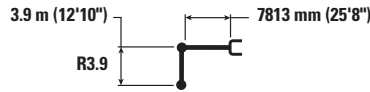


Boom Option	Retrofit Boom Bent Position			
	R3.9TB (12'10")		R3.35TB (11'0")	
Stick Options	Retrofit Stick			
	R3.9TB (12'10")		R3.35TB (11'0")	
1 Maximum Digging Depth	7220 mm	23'8"	6670 mm	21'11"
2 Maximum Reach at Ground Line	12 270 mm	40'3"	11 880 mm	39'0"
3 Maximum Cutting Height	10 530 mm	34'7"	10 690 mm	35'1"
4 Maximum Loading Height	7440 mm	24'5"	7500 mm	24'7"
5 Minimum Loading Height	2500 mm	8'2"	3050 mm	10'0"
6 Maximum Depth Cut for 2440 mm (8 ft) Level Bottom	7090 mm	23'3"	6520 mm	21'5"
7 Maximum Vertical Wall Digging Depth	5050 mm	16'7"	4980 mm	16'4"
Bucket Digging Force (ISO)	268 kN	60,250 lbf	268 kN	60,250 lbf
Stick Digging Force (ISO)	183 kN	41,140 lbf	199 kN	44,740 lbf
Bucket Type	GD		GD	
Bucket Capacity	3.08 m ³	4.03 yd ³	3.08 m ³	4.03 yd ³
Bucket Tip Radius	1888 mm	6'2"	1888 mm	6'2"

352 UHD Hydraulic Excavator Specifications

Retrofit Boom (straight position) – with Bucket Linkages, without Bucket, Heavy Lift: On

Hydraulic Variable Gauge Undercarriage



		4500 mm/15'0"		6000 mm/20'0"		7500 mm/25'0"		9000 mm/30'0"		10 500 mm/35'0"		mm ft/in		
12 000 mm 40'0"	kg lb			*10 700	*10 700							*9500 *21,550	*9500 *21,550	6270 19'06"
10 500 mm 35'0"	kg lb					*10 850 *22,100	*10 850 *22,100					*8100 *18,100	*8100 *18,100	8170 26'02"
9000 mm 30'0"	kg lb					*12 250 *26,600	*12 250 *26,600	*9900 *19,450	*9900 *19,450			*7500 *16,550	*7500 *16,550	9450 30'07"
7500 mm 25'0"	kg lb			*12 950 *28,350	*12 950 *28,350	*13 250 *28,900	*13 250 *28,900	*12 250 *26,150	*12 250 *26,150			*7200 *15,850	*7200 *15,850	10 360 33'09"
6000 mm 20'0"	kg lb	*19 250 *39,550	*19 250 *39,550	*17 150 *36,550	*17 150 *36,550	*15 750 *34,100	*15 750 *34,100	*13 550 *29,350	*12 650 *27,150	*10 400 *20,450	9800 *20,450	*7100 *15,600	*7100 *15,600	10 990 35'11"
4500 mm 15'0"	kg lb			*20 650 *44,600	*20 650 *44,600	*16 500 *35,750	16 150 34,750	*13 900 *30,100	12 250 26,300	*11 950 *25,850	9600 20,650	*7150 *15,700	*7150 *15,700	11 380 37'03"
3000 mm 10'0"	kg lb			*21 800 *47,150	21 250 45,850	*17 100 *37,050	15 400 33,150	*14 100 *30,600	11 800 25,400	*11 900 *25,750	9400 20,150	*7350 *16,200	*7350 *16,200	11 570 37'11"
1500 mm 5'0"	kg lb			*21 900 *47,500	20 250 43,650	*17 250 *37,300	14 750 31,850	*14 050 *30,450	11 450 24,600	*11 650 *25,100	9150 19,700	*7750 *17,050	*7750 *17,050	11 550 37'10"
0 mm 0'0"	kg lb	*25,750	*25,750	*20 750 *45,100	19 750 42,550	*16 650 *36,000	14 400 30,950	*13 550 *29,250	11 150 24,050	*10 950 *23,450	9000 19,450	*8350 *18,400	8150 17,900	11 330 37'02"
-1500 mm -5'0"	kg lb	*16 750 *38,450	*16 750 *38,450	*18 500 *40,200	*18 500 *40,200	*15 200 *32,850	14 200 30,600	*12 300 *26,500	11 050 23,800	*9500 *19,950	9000 19,400	*8500 *18,600	*8500 *18,600	10 900 35'08"
-3000 mm -10'0"	kg lb			*15 200 *32,850	*15 200 *32,850	*12 750 *27,350	*12 750 *27,350	*10 100 *21,400	*10 100 *21,400			*7800 *17,300	*7800 *17,300	10 050 32'08"



ISO 10567:2007



* Indicates that the load is limited by hydraulic lifting capacity rather than tipping load. The above loads are in compliance with hydraulic excavator lift capacity standard ISO 10567:2007. They do not exceed 87% of hydraulic lifting capacity or 75% of tipping load. Weight of all lifting accessories must be deducted from the above lifting capacities. Lifting capacities are based on the machine standing on a firm, uniform supporting surface. The use of a work tool attachment point to handle/lift objects, could affect the machine lift performance.

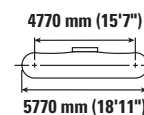
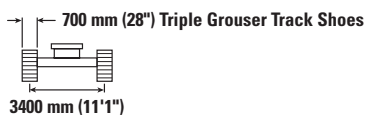
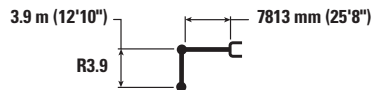
Lift capacity stays with ±5% for all available track shoes.

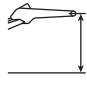

Always refer to the appropriate Operation and Maintenance Manual for specific product information.

352 UHD Hydraulic Excavator Specifications

Retrofit Boom (straight position) – with Bucket Linkages, without Bucket, Heavy Lift: On

Hydraulic Variable Gauge Undercarriage



	4500 mm/15'0"		6000 mm/20'0"		7500 mm/25'0"		9000 mm/30'0"		10 500 mm/35'0"				mm ft/in	
	kg lb	kg lb	kg lb	kg lb	kg lb	kg lb	kg lb	kg lb	kg lb	kg lb	kg lb	kg lb		
12 000 mm 40'0"			*10 700	*10 700								*9500 *21,550	*9500 *21,550	6270 19'06"
10 500 mm 35'0"					*10 850 *22,100	*10 850 *22,100						*8100 *18,100	*8100 *18,100	8170 26'02"
9000 mm 30'0"					*12 250 *26,600	*12 250 *26,600	*9900 *19,450	*9900 *19,450				*7500 *16,550	*7500 *16,550	9450 30'07"
7500 mm 25'0"			*12 950 *28,350	*12 950 *28,350	*13 250 *28,900	*13 250 *28,900	*12 250 *26,150	*12 250 *26,150				*7200 *15,850	*7200 *15,850	10 360 33'09"
6000 mm 20'0"	*19 250 *39,550	*19 250 *39,550	*17 150 *36,550	*17 150 *36,550	*15 750 *34,100	*15 750 *34,100	*13 550 *29,350	*12 750 *27,350	*10 400 *20,450	9850 *20,450		*7100 *15,600	*7100 *15,600	10 990 35'11"
4500 mm 15'0"			*20 650 *44,600	*20 650 *44,600	*16 500 *35,750	16 250 35,050	*13 900 *30,100	12 350 26,550	*11 950 *25,850	9700 20,800		*7150 *15,700	*7150 *15,700	11 380 37'03"
3000 mm 10'0"			*21 800 *47,150	21 450 46,200	*17 100 *37,050	15 500 33,450	*14 100 *30,600	11 900 25,650	*11 900 *25,750	9450 20,350		*7350 *16,200	*7350 *16,200	11 570 37'11"
1500 mm 5'0"			*21 900 *47,500	20 450 44,050	*17 250 *37,300	14 900 32,100	*14 050 *30,450	11 550 24,850	*11 650 *25,100	9250 19,900		*7750 *17,050	*7750 *17,050	11 550 37'10"
0 mm 0'0"		*25,750	*25,750	*20 750 *45,100	19 950 42,900	*16 650 *36,000	14 500 31,250	*13 550 *29,250	11 250 24,250	*10 950 *23,450	9100 19,600	*8350 *18,400	8200 18,100	11 330 37'02"
-1500 mm -5'0"		*16 750 *38,450	*16 750 *38,450	*18 500 *40,200	*18 500 *40,200	*15 200 *32,850	14 350 30,850	*12 300 *26,500	11 150 24,000	*9500 *19,950	9050 19,550	*8500 *18,600	*8500 *18,600	10 900 35'08"
-3000 mm -10'0"				*15 200 *32,850	*15 200 *32,850	*12 750 *27,350	*12 750 *27,350	*10 100 *21,400	*10 100 *21,400			*7800 *17,300	*7800 *17,300	10 050 32'08"



ISO 10567:2007



* Indicates that the load is limited by hydraulic lifting capacity rather than tipping load. The above loads are in compliance with hydraulic excavator lift capacity standard ISO 10567:2007. They do not exceed 87% of hydraulic lifting capacity or 75% of tipping load. Weight of all lifting accessories must be deducted from the above lifting capacities. Lifting capacities are based on the machine standing on a firm, uniform supporting surface. The use of a work tool attachment point to handle/lift objects, could affect the machine lift performance.

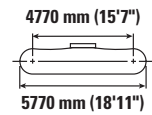
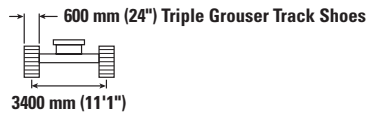
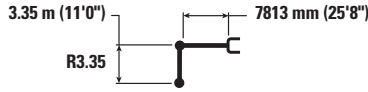
Lift capacity stays with ±5% for all available track shoes.

Always refer to the appropriate Operation and Maintenance Manual for specific product information.

352 UHD Hydraulic Excavator Specifications

Retrofit Boom (straight position) – with Bucket Linkages, without Bucket, Heavy Lift: On

Hydraulic Variable Gauge Undercarriage



		4500 mm/15'0"		6000 mm/20'0"		7500 mm/25'0"		9000 mm/30'0"		10 500 mm/35'0"		mm ft/in		
12 000 mm 40'0"	kg lb											*11 550	*11 550	5390
10 500 mm 35'0"	kg lb			*14 150 *30,750	*14 150 *30,750	*9550	*9550					*9400 *21,050	*9400 *21,050	7520 24'00"
9000 mm 30'0"	kg lb			*14 250 *31,350	*14 250 *31,350	*13 900 *29,950	*13 900 *29,950					*8500 *18,850	*8500 *18,850	8900 28'09"
7500 mm 25'0"	kg lb			*15 500 *33,750	*15 500 *33,750	*15 450 *33,500	*15 450 *33,500	*13 350 *27,750	12 700 27,300			*8050 *17,800	*8050 *17,800	9860 32'01"
6000 mm 20'0"	kg lb	*26 150 *56,200	*26 150 *56,200	*19 850 *42,850	*19 850 *42,850	*16 250 *35,200	*16 250 *35,200	*13 900 *30,150	12 500 26,850	*8100	*8100	*7900 *17,400	*7900 *17,400	10 520 34'04"
4500 mm 15'0"	kg lb			*21 300 *46,000	*21 300 *46,000	*16 950 *36,650	15 950 34,350	*14 150 *30,650	12 100 26,100	*12 050 *24,000	9550 20,450	*7900 *17,400	*7900 *17,400	10 930 35'09"
3000 mm 10'0"	kg lb			*22 150 *47,950	20 950 45,250	*17 350 *37,600	15 250 32,900	*14 250 *30,900	11 750 25,300	*11 950 *25,700	9350 20,100	*8100 *17,850	*8100 *17,850	11 120 36'05"
1500 mm 5'0"	kg lb			*21 750 *47,200	20 150 43,450	*17 250 *37,350	14 750 31,750	*14 050 *30,400	11 400 24,600	*11 500 *24,650	9200 19,750	*8500 *18,750	8500 18,700	11 100 36'04"
0 mm 0'0"	kg lb			*20 050 *43,650	19 800 42,650	*16 350 *35,400	14 400 31,050	*13 300 *28,700	11 200 24,150	*10 450 *22,200	9100 19,600	*9150 *20,150	8700 19,150	10 880 35'08"
-1500 mm -5'0"	kg lb			*17 400 *37,800	*17 400 *37,800	*14 550 *31,450	14 300 30,850	*11 750 *25,150	11 150 24,050			*8450 *18,550	*8450 *18,550	10 430 34'02"
-3000 mm -10'0"	kg lb					*11 650 *25,000	*11 650 *25,000					*9000 *20,150	*9000 *20,150	8960 28'11"



ISO 10567:2007



* Indicates that the load is limited by hydraulic lifting capacity rather than tipping load. The above loads are in compliance with hydraulic excavator lift capacity standard ISO 10567:2007. They do not exceed 87% of hydraulic lifting capacity or 75% of tipping load. Weight of all lifting accessories must be deducted from the above lifting capacities. Lifting capacities are based on the machine standing on a firm, uniform supporting surface. The use of a work tool attachment point to handle/lift objects, could affect the machine lift performance.

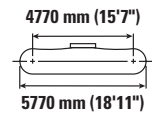
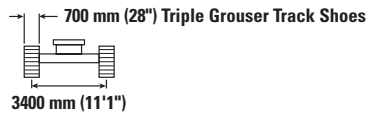
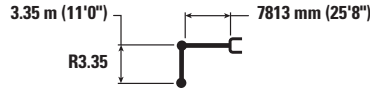
Lift capacity stays with ±5% for all available track shoes.

Always refer to the appropriate Operation and Maintenance Manual for specific product information.

352 UHD Hydraulic Excavator Specifications

Retrofit Boom (straight position) – with Bucket Linkages, without Bucket, Heavy Lift: On

Hydraulic Variable Gauge Undercarriage



		4500 mm/15'0"		6000 mm/20'0"		7500 mm/25'0"		9000 mm/30'0"		10 500 mm/35'0"		mm ft/in		
12 000 mm 40'0"	kg lb											*11 550	*11 550	5390
10 500 mm 35'0"	kg lb			*14 150 *30,750	*14 150 *30,750	*9550	*9550					*9400 *21,050	*9400 *21,050	7520 24'00"
9000 mm 30'0"	kg lb			*14 250 *31,350	*14 250 *31,350	*13 900 *29,950	*13 900 *29,950					*8500 *18,850	*8500 *18,850	8900 28'09"
7500 mm 25'0"	kg lb			*15 500 *33,750	*15 500 *33,750	*15 450 *33,500	*15 450 *33,500	*13 350 *27,750	12 800 27,500			*8050 *17,800	*8050 *17,800	9860 32'01"
6000 mm 20'0"	kg lb	*26 150 *56,200	*26 150 *56,200	*19 850 *42,850	*19 850 *42,850	*16 250 *35,200	*16 250 *35,200	*13 900 *30,150	12 600 27,050	*8100	*8100	*7900 *17,400	*7900 *17,400	10 520 34'04"
4500 mm 15'0"	kg lb			*21 300 *46,000	*21 300 *46,000	*16 950 *36,650	16 050 34,650	*14 150 *30,650	12 200 26,300	*12 050 *24,000	9600 20,650	*7900 *17,400	*7900 *17,400	10930 35'09"
3000 mm 10'0"	kg lb			*22 150 *47,950	21 150 45,600	*17 350 *37,600	15 400 33,150	*14 250 *30,900	11 850 25,500	*11 950 *25,700	9450 20,300	*8100 *17,850	*8100 *17,850	11 120 36'05"
1500 mm 5'0"	kg lb			*21 750 *47,200	20 350 43,800	*17 250 *37,350	14 850 32,000	*14 050 *30,400	11 500 24,850	*11 500 *24,650	9250 19,950	*8500 *18,750	*8500 *18,750	11 100 36'04"
0 mm 0'0"	kg lb			*20 050 *43,650	20 000 43,050	*16 350 *35,400	14 550 31,350	*13 300 *28,700	11 300 24,400	*10 450 *22,200	9200 19,800	*9150 *20,150	8750 19,300	10 880 35'08"
-1500 mm -5'0"	kg lb			*17 400 *37,800	*17 400 *37,800	*14 550 *31,450	14 450 31,100	*11 750 *25,150	11 250 24,250			*8450 *18,550	*8450 *18,550	10 430 34'02"
-3000 mm -10'0"	kg lb					*11 650 *25,000	*11 650 *25,000					*9000 *20,150	*9000 *20,150	8960 28'11"



ISO 10567:2007



* Indicates that the load is limited by hydraulic lifting capacity rather than tipping load. The above loads are in compliance with hydraulic excavator lift capacity standard ISO 10567:2007. They do not exceed 87% of hydraulic lifting capacity or 75% of tipping load. Weight of all lifting accessories must be deducted from the above lifting capacities. Lifting capacities are based on the machine standing on a firm, uniform supporting surface. The use of a work tool attachment point to handle/lift objects, could affect the machine lift performance.

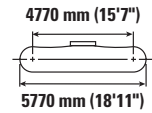
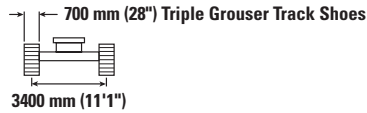
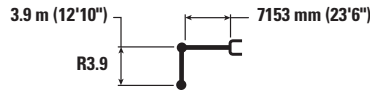
Lift capacity stays with ±5% for all available track shoes.

Always refer to the appropriate Operation and Maintenance Manual for specific product information.

352 UHD Hydraulic Excavator Specifications

Retrofit Boom (bent position) – with Bucket Linkages, without Bucket, Heavy Lift: On

Wider Hydraulic Variable Gauge Undercarriage



Boom Length	Unit	3000 mm/10'0"		4500 mm/15'0"		6000 mm/20'0"		7500 mm/25'0"		9000 mm/30'0"		10 500 mm/35'0"		mm ft/in		
		kg lb	kg lb	kg lb	kg lb	kg lb	kg lb	kg lb	kg lb	kg lb	kg lb	kg lb	kg lb	kg lb	kg lb	mm ft/in
9000 mm 30'0"	kg lb													*7350 *16,250	*7350 *16,250	8240 26'07"
7500 mm 25'0"	kg lb									*8650 *16,400	*8650 *16,400			*7100 *15,650	*7100 *15,650	9270 30'02"
6000 mm 20'0"	kg lb							*13 400 *29,100	*13 400 *29,100	*11 850 *24,650	*11 850 *24,650			*7100 *15,650	*7100 *15,650	9970 32'06"
4500 mm 15'0"	kg lb					*17 400 *37,600	*17 400 *37,600	*14 500 *31,500	*14 500 *31,500	*12 750 *27,700	*12 750 *27,650			*7300 *16,100	*7300 *16,100	10 400 *16,100
3000 mm 10'0"	kg lb			*27 450 *59,000	*27 450 *59,000	*19 650 *42,500	*19 650 *42,500	*15 750 *34,100	*15 750 *34,100	*13 400 *29,050	12 400 26,750	*8650 *8650		*7750 *16,950	*7750 *16,950	10 600 *16,950
1500 mm 5'0"	kg lb			*21 750 *51,300	*21 750 *51,300	*21 350 *46,200	*21 350 *46,200	*16 750 *36,300	15 650 33,650	*13 950 *30,200	12 000 25,850	*9250 *9250		*8400 *18,400	*8400 *18,400	10 580 *18,400
0 mm 0'0"	kg lb			*22 400 *51,600	*22 400 *51,600	*22 050 *47,750	20 800 44,750	*17 250 *37,400	15 100 32,550	*14 150 *30,700	11 700 25,150			*9400 *20,650	*9400 *20,650	10 350 *20,650
-1500 mm -5'0"	kg lb	*16 000 *35,950	*16 000 *35,950	*27 600 *62,050	*27 600 *62,050	*21 700 *46,950	20 400 43,900	*17 100 *37,000	14 800 31,900	*13 850 *29,900	11,500 24 750			*11 000 *24,300	10 150 22,350	9870 32'04"
-3000 mm -10'0"	kg lb	*22 900 *51,600	*22 900 *51,600	*25 900 *56,150	*25 900 *56,150	*20 150 *43,600	*20 150 *43,600	*16 000 *34,450	14 700 31,700	*12 550 11,500				*12 250 *27,000	11 300 24,950	9130 29'10"
-4500 mm -15'0"	kg lb			*21 600 *46,550	*21 600 *46,550	*17 200 *36,850	*17 200 *36,850	*13 350 *28,300	*13 350 *28,300					*11 950 *26,250	*11 950 *26,250	8030 26'01"



ISO 10567:2007



* Indicates that the load is limited by hydraulic lifting capacity rather than tipping load. The above loads are in compliance with hydraulic excavator lift capacity standard ISO 10567:2007. They do not exceed 87% of hydraulic lifting capacity or 75% of tipping load. Weight of all lifting accessories must be deducted from the above lifting capacities. Lifting capacities are based on the machine standing on a firm, uniform supporting surface. The use of a work tool attachment point to handle/lift objects, could affect the machine lift performance.

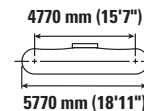
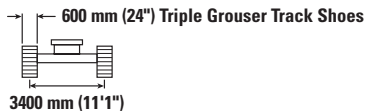
Lift capacity stays with ±5% for all available track shoes.

Always refer to the appropriate Operation and Maintenance Manual for specific product information.

352 UHD Hydraulic Excavator Specifications

Retrofit Boom (bent position) – with Bucket Linkages, without Bucket, Heavy Lift: On

Wider Hydraulic Variable Gauge Undercarriage



		3000 mm/10'0"		4500 mm/15'0"		6000 mm/20'0"		7500 mm/25'0"		9000 mm/30'0"		10 500 mm/35'0"		mm ft/in		
9000 mm 30'0"	kg lb													*7350 *16,250	*7350 *16,250	8240 26'07"
7500 mm 25'0"	kg lb									*8650 *16,400	*8650 *16,400			*7100 *15,650	*7100 *15,650	9270 30'02"
6000 mm 20'0"	kg lb							*13 400 *29,100	*13 400 *29,100	*11 850 *24,650	*11 850 *24,650			*7100 *15,650	*7100 *15,650	9970 32'06"
4500 mm 15'0"	kg lb					*17 400 *37,600	*17 400 *37,600	*14 500 *31,500	*14 500 *31,500	*12 750 *27,700	*12 750 *27,400			*7300 *16,100	*7300 *16,100	10 400 34'00"
3000 mm 10'0"	kg lb			*27 450 *59,000	*27 450 *59,000	*19 650 *42,500	*19 650 *42,500	*15 750 *34,100	*15 750 *34,100	*13 400 *29,050	12 300 26,500	*8650 *8650		*7750 *16,950	*7750 *16,950	10 600 34'09"
1500 mm 5'0"	kg lb			*21 750 *51,300	*21 750 *51,300	*21 350 *46,200	*21 350 *46,050	*16 750 *36,300	15 500 33,400	*13 950 *30,200	11 900 25,650	*9250 *9250		*8400 *18,400	*8400 *18,400	10 580 34'08"
0 mm 0'0"	kg lb			*22 400 *51,600	*22 400 *51,600	*22 050 *47,750	20 600 44,350	*17 250 *37,400	15 000 32,250	*14 150 *30,700	11 600 24,950			*9400 *20,650	*9400 *20,650	10 350 33'11"
-1500 mm -5'0"	kg lb	*16 000 *35,950	*16 000 *35,950	*27 600 *62,050	*27 600 *62,050	*21 700 *46,950	20 250 43,550	*17 100 *37,000	14 700 31,600	*13 850 *29,900	11 400 24,550			*11 000 *24,300	10 050 22,150	9870 32'04"
-3000 mm -10'0"	kg lb	*22 900 *51,600	*22 900 *51,600	*25 900 *56,150	*25 900 *56,150	*20 150 *43,600	20 150 43,400	*16 000 *34,450	14 600 31,450	*12 550	11 400			*12 250 *27,000	11 200 24,750	9130 29'10"
-4500 mm -15'0"	kg lb			*21 600 *46,550	*21 600 *46,550	*17 200 *36,850	*17 200 *36,850	*13 350 *28,300	*13 350 *28,300					*11 950 *26,250	*11 950 *26,250	8030 26'01"



ISO 10567:2007



* Indicates that the load is limited by hydraulic lifting capacity rather than tipping load. The above loads are in compliance with hydraulic excavator lift capacity standard ISO 10567:2007. They do not exceed 87% of hydraulic lifting capacity or 75% of tipping load. Weight of all lifting accessories must be deducted from the above lifting capacities. Lifting capacities are based on the machine standing on a firm, uniform supporting surface. The use of a work tool attachment point to handle/lift objects, could affect the machine lift performance.

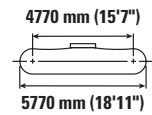
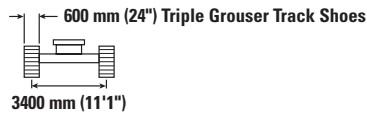
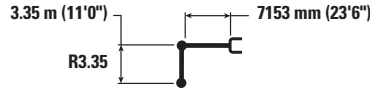
Lift capacity stays with ±5% for all available track shoes.

Always refer to the appropriate Operation and Maintenance Manual for specific product information.

352 UHD Hydraulic Excavator Specifications

Retrofit Boom (bent position) – with Bucket Linkages, without Bucket, Heavy Lift: On

Hydraulic Variable Gauge Undercarriage



Boom Length	Unit	3000 mm/10'0"		4500 mm/15'0"		6000 mm/20'0"		7500 mm/25'0"		9000 mm/30'0"		mm ft/in		
		kg lb	kg lb	kg lb	kg lb	kg lb	kg lb	kg lb	kg lb	kg lb	kg lb	kg lb	kg lb	
9000 mm 30'0"	kg lb							*9800 *9800				*8300 *18,400	*8300 *18,400	7730 24'10"
7500 mm 25'0"	kg lb							*13 450 *29,350	*13 450 *29,350			*7950 *17,500	*7950 *17,500	8820 28'08"
6000 mm 20'0"	kg lb							*14 150 *30,700	*14 150 *30,700	*12 100 *24,150	*12 100 *24,150	*7900 *17,350	*7900 *17,350	9550 31'02"
4500 mm 15'0"	kg lb			*24 800 *53,200	*24 800 *53,200	*18 450 *39,800	*18 450 *39,800	*15 200 *32,950	*15 200 *32,950	*13 250 *28,850	12 600 27,100	*8100 *17,750	*8100 *17,750	10000 32'08"
3000 mm 10'0"	kg lb			*21 300 *53,650	*21 300 *53,650	*20 550 *44,350	*20 550 *44,350	*16 300 *35,300	16 000 34,500	*13 800 *29,950	12 250 26,300	*8500 *18,650	*8500 *18,650	10210 33'05"
1500 mm 5'0"	kg lb			*15 850 *37,750	*15 850 *37,750	*21 900 *47,350	21 200 45,650	*17 150 *37,150	15 400 33,200	*14 200 *30,800	11 850 25,550	*9200 *20,200	*9200 *20,200	10190 33'05"
0 mm 0'0"	kg lb			*20 000 *46,150	*20 000 *46,150	22200 *48,100	20 550 44,300	*17 450 *37,750	14 950 32,250	*14 250 *30,850	11 600 25,000	*10 300 *22,650	10 100 22,250	9940 32'07"
-1500 mm -5'0"	kg lb	*15 750 *35,500	*15 750 *35,500	*27 550 *59,850	*27 550 *59,850	*21 400 *46,350	20 300 43,700	*16 950 *36,650	14 750 31,750	*13 600 *29,250	11 500 24,750	*12 100 *26,700	*12 100 *26,700	10 750 30'11"
-3000 mm -10'0"	kg lb			*24 350 *52,800	*24 350 *52,800	*19 400 *41,950	*19 400 *41,950	*15 400 *33,100	14 750 31,800			*12 450 *27,400	12 150 26,900	8670 28'03"
-4500 mm -15'0"	kg lb					*15 700 *33,500	*15 700 *33,500	*11 650 *11 650				*11 650 *26,100	*11 650 *26,100	7510 24'01"



ISO 10567:2007



* Indicates that the load is limited by hydraulic lifting capacity rather than tipping load. The above loads are in compliance with hydraulic excavator lift capacity standard ISO 10567:2007. They do not exceed 87% of hydraulic lifting capacity or 75% of tipping load. Weight of all lifting accessories must be deducted from the above lifting capacities. Lifting capacities are based on the machine standing on a firm, uniform supporting surface. The use of a work tool attachment point to handle/lift objects, could affect the machine lift performance.

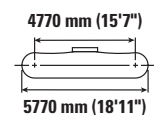
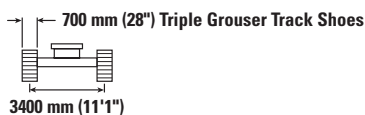
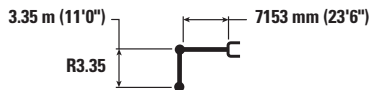
Lift capacity stays with ±5% for all available track shoes.

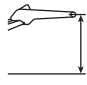
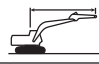
Always refer to the appropriate Operation and Maintenance Manual for specific product information.

352 UHD Hydraulic Excavator Specifications

Retrofit Boom (bent position) – with Bucket Linkages, without Bucket, Heavy Lift: On

Hydraulic Variable Gauge Undercarriage



	3000 mm/10'0"		4500 mm/15'0"		6000 mm/20'0"		7500 mm/25'0"		9000 mm/30'0"				mm ft/in	
	kg lb	kg lb	kg lb	kg lb	kg lb	kg lb	kg lb	kg lb	kg lb	kg lb	kg lb	kg lb		
9000 mm 30'0"							*9800	*9800			*8300 *18,400	*8300 *18,400	7730 24'10"	
7500 mm 25'0"							*13 450 *29,350	*13 450 *29,350			*7950 *17,500	*7950 *17,500	8820 28'08"	
6000 mm 20'0"							*14 150 *30,700	*14 150 *30,700	*12 100 *24,150	*12 100 *24,150	*7900 *17,350	*7900 *17,350	9550 31'02"	
4500 mm 15'0"			*24 800 *53,200	*24 800 *53,200	*18 450 *39,800	*18 450 *39,800	*15 200 *32,950	*15 200 *32,950	*13 250 *28,850	12 700 27,300	*8100 *17,750	*8100 *17,750	10 000 32'08"	
3000 mm 10'0"			*21 300 *53,650	*21 300 *53,650	*20 550 *44,350	*20 550 *44,350	*16 300 *35,300	16 150 34,800	*13 800 *29,950	12 350 26,550	*8500 *18,650	*8500 *18,650	10 210 33'05"	
1500 mm 5'0"			*15 850 *37,750	*15 850 *37,750	*21 900 *47,350	21 350 46,000	*17 150 *37,150	15 550 33,450	*14 200 *30,800	11 950 25,750	*9,200 *20,200	*9,200 *20,200	10 190 33'05"	
0 mm 0'0"			*20 000 *46,150	*20 000 *46,150	*22 200 *48,100	20 750 44,650	*17 450 *37,750	15 100 32,500	*14 250 *30,850	11 700 25,200	*10 300 *22,650	10 200 22,450	9940 32'07"	
-1500 mm -5'0"		*15 750 *35,500	*15 750 *35,500	*27 550 *59,850	*27 550 *59,850	*21 400 *46,350	20 500 44,100	*16 950 *36,650	14 850 32,050	*13 600 *29,250	11 600 24,950	*12,100 *26,700	10 850 23,950	9450 30'11"
-3000 mm -10'0"			*24 350 *52,800	*24 350 *52,800	*19 400 *41,950	*19 400 *41,950	*15 400 *33,100	14 850 32,050			*12 450 *27,400	12 250 27,100	8670 28'03"	
-4500 mm -15'0"					*15 700 *33,500	*15 700 *33,500	*11 650				*11 650 *26,100	*11 650 *26,100	7510 24'01"	



ISO 10567:2007



* Indicates that the load is limited by hydraulic lifting capacity rather than tipping load. The above loads are in compliance with hydraulic excavator lift capacity standard ISO 10567:2007. They do not exceed 87% of hydraulic lifting capacity or 75% of tipping load. Weight of all lifting accessories must be deducted from the above lifting capacities. Lifting capacities are based on the machine standing on a firm, uniform supporting surface. The use of a work tool attachment point to handle/lift objects, could affect the machine lift performance.

Lift capacity stays with ±5% for all available track shoes.

Always refer to the appropriate Operation and Maintenance Manual for specific product information.

352 UHD Hydraulic Excavator Specifications

Bucket Specifications and Compatibility – Europe

	Linkage	Width		Capacity		Weight		Fill	Hydraulic Variable Gauge			
		mm	in	m ³	yd ³	kg	lb		Bent Position		Straight Position	
									R3.35 (11'0")	R3.9 (12'10")	R3.35 (11'0")	R3.9 (12'10")
Pin-On (No Quick Coupler)												
Heavy Duty	TB	1650	66	2.41	3.15	2220	4,894	100	●	●	●	●
	TB	1850	72	2.69	3.52	2349	5,179	100	●	●	●	●
	TB	1900	74	2.78	3.64	2427	5,350	100	●	●	●	⊙
Severe Duty	TB	1700	67	2.41	3.16	2479	5,464	90	●	●	●	●
	TB	1550	61	2.14	2.80	2327	5,129	90	●	●	●	●
Severe Duty – V Edge	TB	1350	54	1.87	2.44	2053	4,526	90	●	●	●	●
	TB	1650	66	2.41	3.15	2367	5,218	90	●	●	●	●
	TB	1900	75	2.78	3.64	2723	6,003	90	●	●	●	●
Extreme Duty	TB	1700	67	2.41	3.16	2722	6,000	90	●	●	●	●
Extreme Duty – V Edge	TB	1950	77	2.78	3.64	2974	6,556	90	●	●	●	●
Maximum load with pin-on (payload + bucket)								kg	9940	8790	8700	7970
								lb	21,914	19,379	19,180	17,571
With Pin Grabber Coupler												
Heavy Duty	TB	1650	66	2.41	3.15	2220	4,894	100	●	●	●	⊙
	TB	1850	72	2.69	3.52	2349	5,179	100	●	●	⊙	⊖
	TB	1900	74	2.78	3.64	2427	5,350	100	●	⊙	⊙	⊖
Severe Duty	TB	1700	67	2.41	3.16	2479	5,464	90	●	●	●	●
	TB	1550	61	2.14	2.80	2327	5,129	90	●	●	●	●
Severe Duty – V Edge	TB	1350	54	1.87	2.44	2053	4,526	90	●	●	●	●
	TB	1650	66	2.41	3.15	2367	5,218	90	●	●	●	●
	TB	1900	75	2.78	3.64	2723	6,003	90	●	●	⊙	⊖
Extreme Duty	TB	1700	67	2.41	3.16	2722	6,000	90	●	●	●	⊙
Severe Duty – V Edge	TB	1950	77	2.78	3.64	2974	6,556	90	●	⊙	⊙	⊖
Maximum load with coupler (payload + bucket)								kg	8887	7737	7647	6917
								lb	19,592	17,057	16,858	15,249

The above loads are in compliance with hydraulic excavator standard EN474-5:2006 + A3:2013, they do not exceed 87% of hydraulic lifting capacity or 75% of tipping capacity with front linkage fully extended at ground line with bucket curled. Capacity based on ISO 7451:2007.

Maximum Material Density:

- 2100 kg/m³ (3,500 lb/yd³)
- ⊙ 1800 kg/m³ (3,000 lb/yd³)
- ⊖ 1500 kg/m³ (2,500 lb/yd³)

Caterpillar recommends using appropriate work tools to maximize the value customers receive from our products. Use of work tools, including buckets, which are outside of Caterpillar's recommendations or specifications for weight, dimensions, flows, pressures, etc. may result in less-than-optimal performance, including but not limited to reductions in production, stability, reliability, and component durability. Improper use of a work tool resulting in sweeping, prying, twisting and/or catching of heavy loads will reduce the life of the boom and stick.

352 UHD Hydraulic Excavator Specifications

Bucket Specifications and Compatibility – Japan

	Linkage	Width		Capacity		Weight		Fill %	Hydraulic Variable Gauge			
		mm	in	m ³	yd ³	kg	lb		Bent Position		Straight Position	
									R3.35 (11'0")	R3.9 (12'10")	R3.35 (11'0")	R3.9 (12'10")
Pin-On (No Quick Coupler)												
General Duty Excavation	TB	1500	59	1.90	2.48	1857	4,094	100	●	●	●	●
	TB	1600	63	2.00	2.62	1904	4,197	100	●	●	●	●
Heavy Duty Excavation	TB	1550	61	1.90	2.48	2275	5,015	100	●	●	●	●
	TB	1700	67	2.10	2.75	2415	5,324	100	●	●	●	●
Severe Duty	TB	1700	67	2.41	3.15	2496	5,502	90	●	●	●	●
	TB	1850	74	2.69	3.52	2696	5,943	90	●	●	●	●
Maximum load with pin-on (payload + bucket)								kg	9940	8790	8700	7970
								lb	21,914	19,379	19,180	17,571

	Linkage	Width		Capacity		Weight		Fill %	Hydraulic Variable Gauge			
		mm	in	m ³	yd ³	kg	lb		Bent Position		Straight Position	
									R3.35 (11'0")	R3.9 (12'10")	R3.35 (11'0")	R3.9 (12'10")
With Pin Grabber Coupler												
General Duty Excavation	TB	1500	59	1.90	2.48	1857	4,094	100	●	●	●	●
	TB	1600	63	2.00	2.62	1904	4,197	100	●	●	●	●
Heavy Duty Excavation	TB	1550	61	1.90	2.48	2275	5,015	100	●	●	●	●
	TB	1700	67	2.10	2.75	2415	5,324	100	●	●	●	●
Severe Duty	TB	1700	67	2.41	3.15	2496	5,502	90	●	●	●	●
	TB	1850	74	2.69	3.52	2696	5,943	90	●	●	●	⊙
Maximum load with pin-on (payload + bucket)								kg	8887	7737	7647	6917
								lb	19,592	17,057	16,858	15,249

The above loads are in compliance with hydraulic excavator standard EN474-5:2006 + A3:2013, they do not exceed 87% of hydraulic lifting capacity or 75% of tipping capacity with front linkage fully extended at ground line with bucket curled. Capacity based on ISO 7451:2007.

Maximum Material Density:

- 2100 kg/m³ (3,500 lb/yd³)
- ⊙ 1800 kg/m³ (3,000 lb/yd³)

Caterpillar recommends using appropriate work tools to maximize the value customers receive from our products. Use of work tools, including buckets, which are outside of Caterpillar's recommendations or specifications for weight, dimensions, flows, pressures, etc. may result in less-than-optimal performance, including but not limited to reductions in production, stability, reliability, and component durability. Improper use of a work tool resulting in sweeping, prying, twisting and/or catching of heavy loads will reduce the life of the boom and stick.

352 UHD Hydraulic Excavator Specifications

Bucket Specifications and Compatibility – North America

	Linkage	Width		Capacity		Weight		Fill	Hydraulic Variable Gauge				
		mm	in	m ³	yd ³	kg	lb		%	Bent Position		Straight Position	
										R3.35 (11'0")	R3.9 (12'10")	R3.35 (11'0")	R3.9 (12'10")
Pin-On (No Quick Coupler)													
General Duty Capacity	TB	800	30	0.95	1.24	1316	2,901	100	●	●	●	●	
	TB	900	36	1.23	1.60	1447	3,190	100	●	●	●	●	
	TB	1050	42	1.51	1.98	1624	3,580	100	●	●	●	●	
	TB	1200	48	1.80	2.36	1777	3,918	100	●	●	●	●	
	TB	1350	54	2.10	2.74	1893	4,173	100	●	●	●	●	
	TB	1500	60	2.39	3.13	2046	4,511	100	●	●	●	●	
	TB	1700	68	2.78	3.64	2233	4,923	100	●	●	●	●	
	TB	1850	74	3.08	4.04	2356	5,194	100	●	●	●	⊙	
General Duty Capacity – Wide Tip	TB	900	36	1.35	1.77	1452	3,201	100	●	●	●	●	
	TB	1350	54	2.22	2.90	1965	4,332	100	●	●	●	●	
	TB	1500	60	2.52	3.29	2081	4,588	100	●	●	●	●	
	TB	1650	66	2.81	3.68	2234	4,925	100	●	●	●	●	
	TB	1800	72	3.11	4.07	2351	5,183	100	●	●	●	●	
	TB	1950	77	3.41	4.46	2504	5,520	100	●	⊙	⊙	⊖	
Heavy Duty	TB	900	36	1.08	1.41	1600	3,527	100	●	●	●	●	
	TB	1050	42	1.34	1.75	1689	3,724	100	●	●	●	●	
	TB	1200	48	1.60	2.09	1852	4,083	100	●	●	●	●	
	TB	1350	54	1.87	2.44	1979	4,363	100	●	●	●	●	
	TB	1500	60	2.14	2.80	2143	4,724	100	●	●	●	●	
	TB	1650	66	2.41	3.15	2307	5,086	100	●	●	●	●	
	TB	1800	72	2.69	3.52	2437	5,373	100	●	●	●	●	
Severe Duty	TB	800	30	0.88	1.15	1514	3,338	90	●	●	●	●	
	TB	900	36	1.08	1.41	1677	3,697	90	●	●	●	●	
	TB	1050	42	1.34	1.75	1775	3,913	90	●	●	●	●	
	TB	1200	48	1.60	2.09	1945	4,288	90	●	●	●	●	
	TB	1400	55	1.87	2.44	2170	4,783	90	●	●	●	●	
	TB	1550	61	2.14	2.80	2369	5,222	90	●	●	●	●	
	TB	1700	67	2.41	3.16	2509	5,531	90	●	●	●	●	
	TB	1850	74	2.69	3.52	2709	5,972	90	●	●	●	●	
Extreme Duty	TB	1250	49	1.60	2.09	2194	4,836	90	●	●	●	●	
	TB	1400	55	1.87	2.44	2334	5,145	90	●	●	●	●	
Extreme Duty V Edge Power	TB	1550	61	2.00	2.59	2562	5,647	90	●	●	●	●	
Clean Up	TB	2000	78	2.80	3.66	2036	4,489	100	●	●	●	●	
Maximum load with pin-on (payload + bucket)								kg	9940	8790	8700	7970	
								lb	21,914	19,379	19,180	17,571	

The above loads are in compliance with hydraulic excavator standard EN474-5:2006 + A3:2013, they do not exceed 87% of hydraulic lifting capacity or 75% of tipping capacity with front linkage fully extended at ground line with bucket curled. Capacity based on ISO 7451:2007.

Maximum Material Density:

- 2100 kg/m³ (3,500 lb/yd³)
- ⊙ 1800 kg/m³ (3,000 lb/yd³)
- ⊖ 1500 kg/m³ (2,500 lb/yd³)

Caterpillar recommends using appropriate work tools to maximize the value customers receive from our products. Use of work tools, including buckets, which are outside of Caterpillar's recommendations or specifications for weight, dimensions, flows, pressures, etc. may result in less-than-optimal performance, including but not limited to reductions in production, stability, reliability, and component durability. Improper use of a work tool resulting in sweeping, prying, twisting and/or catching of heavy loads will reduce the life of the boom and stick.

(continued on next page)

352 UHD Hydraulic Excavator Specifications

Bucket Specifications and Compatibility – North America (continued)

	Linkage	Width		Capacity		Weight		Fill	Hydraulic Variable Gauge				
		mm	in	m ³	yd ³	kg	lb		Bent Position		Straight Position		
									R3.35 (11'0")	R3.9 (12'10")	R3.35 (11'0")	R3.9 (12'10")	
With Pin Grabber Coupler													
General Duty Capacity	TB	800	30	0.95	1.24	1316	2,901	100	●	●	●	●	
	TB	900	36	1.23	1.60	1447	3,190	100	●	●	●	●	
	TB	1050	42	1.51	1.98	1624	3,580	100	●	●	●	●	
	TB	1200	48	1.80	2.36	1777	3,918	100	●	●	●	●	
	TB	1350	54	2.10	2.74	1893	4,173	100	●	●	●	●	
	TB	1500	60	2.39	3.13	2046	4,511	100	●	●	●	●	
	TB	1700	68	2.78	3.64	2233	4,923	100	●	⊙	⊙	⊖	
	TB	1850	74	3.08	4.04	2356	5,194	100	●	⊙	⊖	⊖	
General Duty Capacity – Wide Tip	TB	900	36	1.35	1.77	1452	3,201	100	●	●	●	●	
	TB	1350	54	2.22	2.90	1965	4,332	100	●	●	●	●	
	TB	1500	60	2.52	3.29	2081	4,588	100	●	●	●	⊙	
	TB	1650	66	2.81	3.68	2234	4,925	100	●	⊙	⊙	⊖	
	TB	1800	72	3.11	4.07	2351	5,183	100	●	⊙	⊖	⊖	
	TB	1950	77	3.41	4.46	2504	5,520	100	⊙	⊖	⊖	○	
Heavy Duty	TB	900	36	1.08	1.41	1600	3,527	100	●	●	●	●	
	TB	1050	42	1.34	1.75	1689	3,724	100	●	●	●	●	
	TB	1200	48	1.60	2.09	1852	4,083	100	●	●	●	●	
	TB	1350	54	1.87	2.44	1979	4,363	100	●	●	●	●	
	TB	1500	60	2.14	2.80	2143	4,724	100	●	●	●	●	
	TB	1650	66	2.41	3.15	2307	5,086	100	●	●	●	⊙	
	TB	1800	72	2.69	3.52	2437	5,373	100	●	⊙	⊙	⊖	
Heavy Duty – Pin Grabber Performance	TB	1200	48	1.49	1.95	1935	4,266	100	●	●	●	●	
	TB	1350	54	1.74	2.27	2070	4,563	100	●	●	●	●	
	TB	1500	60	1.98	2.59	2242	4,943	100	●	●	●	●	
	TB	1650	66	2.23	2.91	2413	5,320	100	●	●	●	●	
	TB	1900	74	2.56	3.34	2595	5,721	100	●	●	⊙	⊖	
Severe Duty	TB	800	30	0.88	1.15	1514	3,338	90	●	●	●	●	
	TB	900	36	1.08	1.41	1677	3,697	90	●	●	●	●	
	TB	1050	42	1.34	1.75	1775	3,913	90	●	●	●	●	
	TB	1200	48	1.60	2.09	1945	4,288	90	●	●	●	●	
	TB	1400	55	1.87	2.44	2170	4,783	90	●	●	●	●	
	TB	1550	61	2.14	2.80	2369	5,222	90	●	●	●	●	
	TB	1700	67	2.41	3.16	2509	5,531	90	●	●	●	⊙	
	TB	1850	74	2.69	3.52	2709	5,972	90	●	●	●	●	
	TB	1900	75	2.78	3.64	2723	6,003	90	●	●	⊙	⊖	
Severe Duty – V Edge Power	TB	1750	69	2.40	3.14	2544	5,608	90	●	●	●	●	
Extreme Duty	TB	1250	49	1.60	2.09	2194	4,836	90	●	●	●	●	
	TB	1400	55	1.87	2.44	2334	5,145	90	●	●	●	●	
Extreme Duty – V Edge Power	TB	1550	61	2.00	2.59	2562	5,647	90	●	●	●	●	
Clean Up	TB	2000	78	2.80	3.66	2036	4,489	100	●	●	●	⊙	
Maximum load with coupler (payload + bucket)									kg	8887	7737	7647	6917
									lb	19,592	17,057	16,858	15,249

The above loads are in compliance with hydraulic excavator standard EN474-5:2006 + A3:2013, they do not exceed 87% of hydraulic lifting capacity or 75% of tipping capacity with front linkage fully extended at ground line with bucket curled. Capacity based on ISO 7451:2007.

Maximum Material Density:

- 2100 kg/m³ (3,500 lb/yd³)
- ⊙ 1800 kg/m³ (3,000 lb/yd³)
- ⊖ 1500 kg/m³ (2,500 lb/yd³)
- 1500 kg/m³ (2,500 lb/yd³)

Caterpillar recommends using appropriate work tools to maximize the value customers receive from our products. Use of work tools, including buckets, which are outside of Caterpillar's recommendations or specifications for weight, dimensions, flows, pressures, etc. may result in less-than-optimal performance, including but not limited to reductions in production, stability, reliability, and component durability. Improper use of a work tool resulting in sweeping, prying, twisting and/or catching of heavy loads will reduce the life of the boom and stick.

352 UHD Hydraulic Excavator Specifications

Attachments Offering Guide – Europe

Not all attachments are available in all regions. Consult your Cat dealer for configurations available in your region.

Match

No Match

PIN-ON ATTACHMENTS

Undercarriage		Hydraulic-Variable Gauge									
Counterweight		11.35 mt (25,022 lb) (Removal)				12.0 mt (26,455 lb)					
Boom Type		Retrofit (Bent)		Retrofit (Straight)		UHD 28 m (91'10")	Retrofit (Bent)		Retrofit (Straight)		UHD 28 m (91'10")
		3.35 m (11'0")	3.90 m (12'10")	3.35 m (11'0")	3.90 m (12'10")	UHD 28 m (91'10")	3.35 m (11'0")	3.90 m (12'10")	3.35 m (11'0")	3.90 m (12'10")	UHD 28 m (91'10")
Stick Length		3.35 m (11'0")	3.90 m (12'10")	3.35 m (11'0")	3.90 m (12'10")	UHD 28 m (91'10")	3.35 m (11'0")	3.90 m (12'10")	3.35 m (11'0")	3.90 m (12'10")	UHD 28 m (91'10")
Hydraulic Hammers	H160 S	✓	✓	✓	✓		✓	✓	✓	✓	
	H180 GC S	✓	✓	✓	✓		✓	✓	✓	✓	
	H180 S	✓	✓	✓	✓		✓	✓	✓	✓	
	H190 S	✓	✓	✓	✓		✓	✓	✓	✓	
Multi-Processors	MP318 Concrete Cutter Jaw					✓					✓
	MP318 Demolition Jaw					✓					✓
	MP318 Pulverizer Jaw					✓					✓
	MP318 Shear Jaw					✓					✓
	MP318 Universal Jaw					✓					✓
	MP324 Concrete Cutter Jaw					✓					✓
	MP324 Demolition Jaw					✓					✓
	MP324 Pulverizer Jaw					✓					✓
	MP324 Shear Jaw					✓					✓
	MP324 Tank Shear Jaw					✓					✓
	MP324 Universal Jaw					✓					✓
	MP332 Concrete Cutter Jaw					✓					✓
	MP332 Demolition Jaw					✓					✓
	MP332 Pulverizer Jaw					✓					✓
	MP332 Shear Jaw					✓					✓
	MP332 Universal Jaw					✓					✓
	MP345 Concrete Cutter Jaw	✓	✓	✓	✓		✓	✓	✓	✓	
	MP345 Demolition Jaw	✓	✓	✓	✓		✓	✓	✓	✓	
	MP345 Pulverizer Jaw	✓	✓	✓	✓		✓	✓	✓	✓	
	MP345 Shear Jaw	✓	✓	✓	✓		✓	✓	✓	✓	
MP345 Concrete Cutter Jaw-Flat Top	✓	✓	✓	✓		✓	✓	✓	✓		
MP345 Demolition Jaw-Flat Top	✓	✓	✓	✓		✓	✓	✓	✓		
MP345 Pulverizer Jaw-Flat Top	✓	✓	✓	✓		✓	✓	✓	✓		
MP345 Shear Jaw-Flat Top	✓	✓	✓	✓		✓	✓	✓	✓		
MP365 Concrete Cutter Jaw	✓										
Demolition and Sorting Grapples	G324					✓					✓
	G332					✓					✓
	G345	✓	✓	✓	✓		✓	✓	✓	✓	
	G345 Flat Top	✓	✓	✓	✓		✓	✓	✓	✓	

(continued on next page)

352 UHD Hydraulic Excavator Specifications

Attachments Offering Guide – Europe (continued)

Not all attachments are available in all regions. Consult your Cat dealer for configurations available in your region.

Match
 No Match
 1800 kg/m³ (3,000 lb/yd³)
 1200 kg/m³ (2,000 lb/yd³)

PIN-ON ATTACHMENTS (continued)

Undercarriage		Hydraulic-Variable Gauge									
		11.35 mt (25,022 lb) (Removal)					12.0 mt (26,455 lb)				
Counterweight	Boom Type	Retrofit (Bent)		Retrofit (Straight)		UHD 28 m (91'10")	Retrofit (Bent)		Retrofit (Straight)		UHD 28 m (91'10")
		3.35 m (11'0")	3.90 m (12'10")	3.35 m (11'0")	3.90 m (12'10")	UHD 28 m (91'10")	3.35 m (11'0")	3.90 m (12'10")	3.35 m (11'0")	3.90 m (12'10")	UHD 28 m (91'10")
Mobile Scrap and Demolition Shears	S3025 Flat Top					✓					✓
	S3035 Flat Top					✓					✓
	S3050 Flat Top	✓	✓	✓	✓		✓	✓	✓		
Pulverizers	P245 Secondary Pulverizer	✓					✓				
	P318 Primary Pulverizer					✓					✓
	P324 Primary Pulverizer					✓					✓
	P332 Primary Pulverizer					✓					✓
	P345 Primary Pulverizer	✓	✓	✓	✓		✓	✓	✓	✓	
	P345 Primary Pulverizer-Flat Top	✓	✓	✓	✓		✓	✓	✓	✓	
Orange Peel Grapples	GSH455-1000	●	●	●	●		●	●	●	●	
	GSH455-1500	●	●	●	●		●	●	●	●	
	GSH455-2000	●	●	●	●		●	●	●	●	
	GSH555-1000	●	●	●	●		●	●	●	●	
	GSH555-1500	●	●	●	●		●	●	●	●	
	GSM-50-1000	●	●	●	●		●	●	●	●	
	GSM-50-1250	●	●	●	●		●	●	●	●	
	GSM-50-1500	●	●	●	●		●	●	●	●	
	GSM-50-2000	●	●	●	○		●	●	●	○	
	GSM-60-1250	●	●	●	●		●	●	●	●	
	GSM-60-1500	●	●	●	●		●	●	●	○	
	GSM-60-2000	○	○	○	○		○	○	○		
	GSM-60-2500	○					○				
Clamshell Grapples	CTV30-1700	●	●	●	●		●	●	●	●	
	CTV30-1900	●	●	●	●		●	●	●	●	
	CTV30-2300	●	●	●	●		●	●	●	●	
	CTV30-2700	●	○	●	○		●	○	○	○	
	CTV30-2900	●	○	○	○		○	○	○	○	
	CTV30-3100	○	○	○	○		○	○	○	○	
	CTV30-3800	○		○			○		○		
	Rotary Cutters	RC15					✓				
RC20						✓					✓
RC50		✓	✓	✓	✓		✓	✓	✓	✓	

(continued on next page)

352 UHD Hydraulic Excavator Specifications

Attachments Offering Guide – Europe (continued)

Not all attachments are available in all regions. Consult your Cat dealer for configurations available in your region.

Match

No Match

CAT PIN GRABBER COUPLER ATTACHMENTS

Undercarriage		Hydraulic-Variable Gauge							
Counterweight		11.35 mt (25,022 lb) (Removal)				12.0 mt (26,455 lb)			
Boom Type		Retrofit (Bent)		Retrofit (Straight)		Retrofit (Bent)		Retrofit (Straight)	
Stick Length		3.35 m (11'0")	3.90 m (12'10")	3.35 m (11'0")	3.90 m (12'10")	3.35 m (11'0")	3.90 m (12'10")	3.35 m (11'0")	3.90 m (12'10")
Hydraulic Hammers	H160 S	✓	✓	✓	✓	✓	✓	✓	✓
	H180 GC S	✓	✓	✓	✓	✓	✓	✓	✓
	H180 S	✓	✓	✓	✓	✓	✓	✓	✓
Multi-Processors	MP345 Concrete Cutter Jaw	✓	✓	✓	✓	✓		✓	
	MP345 Demolition Jaw	✓		✓		✓		✓	
	MP345 Pulverizer Jaw	✓		✓		✓			
	MP345 Shear Jaw	✓	✓	✓	✓	✓		✓	
	MP345 Shear Jaw-Flat Top	✓							
Demolition and Sorting Grapples	G345	✓	✓	✓	✓	✓	✓	✓	✓
	G345 Flat Top	✓	✓	✓	✓	✓	✓	✓	✓
Rotary Cutters	RC50	✓	✓	✓	✓	✓	✓	✓	✓

CW-40 DEDICATED COUPLER ATTACHMENTS

Undercarriage		H-VG	
Counterweight		11.35 mt (25,022 lb) (Removal)	
Boom Type		UHD 28 m (91'10")	
Stick Length		UHD 28 m (91'10")	
Multi-Processors	MP318 Concrete Cutter Jaw	✓	✓
	MP318 Demolition Jaw	✓	✓
	MP318 Pulverizer Jaw	✓	✓
	MP318 Shear Jaw	✓	✓
	MP318 Universal Jaw	✓	✓
	MP324 Concrete Cutter Jaw	✓	✓
	MP324 Demolition Jaw	✓	✓
	MP324 Pulverizer Jaw	✓	✓
	MP324 Shear Jaw	✓	✓
	MP324 Tank Shear Jaw	✓	✓
	MP324 Universal Jaw	✓	✓
Demolition and Sorting Grapples	G324	✓	✓
	G332	✓	✓
Mobile Scrap and Demolition Shears	S3025 Flat Top	✓	✓
	S3035 Flat Top	✓	✓
Pulverizers	P318 Primary Pulverizer	✓	✓
	P324 Primary Pulverizer	✓	✓
Rotary Cutters	RC15	✓	✓
	RC20	✓	✓

(continued on next page)

352 UHD Hydraulic Excavator Specifications

Attachments Offering Guide – Europe (continued)

Not all attachments are available in all regions. Consult your Cat dealer for configurations available in your region.

Match

CW-45s DEDICATED COUPLER ATTACHMENTS

Undercarriage		H-VG	
Counterweight		11.35 mt (25,022 lb) (Removal)	12.0 mt (26,455 lb)
Boom Type		UHD 28 m (91'10")	UHD 28 m (91'10")
Stick Length		UHD 28 m (91'10")	UHD 28 m (91'10")
Multi-Processors	MP318 Concrete Cutter Jaw	✓	✓
	MP318 Demolition Jaw	✓	✓
	MP318 Pulverizer Jaw	✓	✓
	MP318 Shear Jaw	✓	✓
	MP318 Universal Jaw	✓	✓
	MP324 Concrete Cutter Jaw	✓	✓
	MP324 Demolition Jaw	✓	✓
	MP324 Pulverizer Jaw	✓	✓
	MP324 Shear Jaw	✓	✓
	MP324 Tank Shear Jaw	✓	✓
	MP324 Universal Jaw	✓	✓
Demolition and Sorting Grapples	G324	✓	✓
	G332	✓	✓
Mobile Scrap and Demolition Shears	S3025 Flat Top	✓	✓
	S3035 Flat Top	✓	✓
Pulverizers	P318 Primary Pulverizer	✓	✓
	P324 Primary Pulverizer	✓	✓
Rotary Cutters	RC15	✓	✓
	RC20	✓	✓

CW-45 DEDICATED COUPLER ATTACHMENTS

Undercarriage		H-VG	
Counterweight		11.35 mt (25,022 lb) (Removal)	12.0 mt (26,455 lb)
Boom Type		UHD 28 m (91'10")	UHD 28 m (91'10")
Stick Length		UHD 28 m (91'10")	UHD 28 m (91'10")
Multi-Processors	MP318 Concrete Cutter Jaw	✓	✓
	MP318 Demolition Jaw	✓	✓
	MP318 Pulverizer Jaw	✓	✓
	MP318 Shear Jaw	✓	✓
	MP318 Universal Jaw	✓	✓
	MP324 Concrete Cutter Jaw	✓	✓
	MP324 Demolition Jaw	✓	✓
	MP324 Pulverizer Jaw	✓	✓
	MP324 Shear Jaw	✓	✓
	MP324 Tank Shear Jaw	✓	✓
	MP324 Universal Jaw	✓	✓
Demolition and Sorting Grapples	G324	✓	✓
	G332	✓	✓
Mobile Scrap and Demolition Shears	S3025 Flat Top	✓	✓
Pulverizers	P318 Primary Pulverizer	✓	✓
	P324 Primary Pulverizer	✓	✓
Rotary Cutters	RC15	✓	✓
	RC20	✓	✓

(continued on next page)

352 UHD Hydraulic Excavator Specifications

Attachments Offering Guide – Europe (continued)

Not all attachments are available in all regions. Consult your Cat dealer for configurations available in your region.

Match

No Match

CW-55 DEDICATED COUPLER ATTACHMENTS

Undercarriage		Hydraulic-Variable Gauge							
Counterweight		11.35 mt (25,022 lb) (Removal)				12.0 mt (26,455 lb)			
Boom Type		Retrofit (Bent)		Retrofit (Straight)		Retrofit (Bent)		Retrofit (Straight)	
Stick Length		3.35 m (11'0")	3.90 m (12'10")	3.35 m (11'0")	3.90 m (12'10")	3.35 m (11'0")	3.90 m (12'10")	3.35 m (11'0")	3.90 m (12'10")
Hydraulic Hammers	H160 S	✓	✓	✓	✓	✓	✓	✓	✓
	H180 GC S	✓	✓	✓	✓	✓	✓	✓	✓
	H180 S	✓	✓	✓	✓	✓	✓	✓	✓
Multi-Processors	MP345 Concrete Cutter Jaw	✓	✓	✓	✓	✓	✓	✓	✓
	MP345 Demolition Jaw	✓		✓		✓		✓	
	MP345 Pulverizer Jaw	✓		✓		✓		✓	
	MP345 Shear Jaw	✓	✓	✓	✓	✓	✓	✓	✓
	MP345 Pulverizer Jaw-Flat Top	✓		✓		✓		✓	
	MP345 Shear Jaw-Flat Top	✓		✓		✓		✓	
Demolition and Sorting Grapples	G345	✓	✓	✓	✓	✓	✓	✓	✓
	G345 Flat Top	✓	✓	✓	✓	✓	✓	✓	✓
Pulverizers	P345 Primary Pulverizer	✓		✓		✓		✓	
Rotary Cutters	P345 Primary Pulverizer-Flat Top	✓	✓	✓	✓	✓	✓	✓	✓

HCS70 COUPLER ATTACHMENTS

Undercarriage		H-VG	
Counterweight		11.35 mt (25,022 lb) (Removal)	
Boom Type		UHD 28 m (91'10")	
Stick Length		UHD 28 m (91'10")	
Multi-Processors	MP318 Concrete Cutter Jaw	✓	✓
	MP318 Demolition Jaw	✓	✓
	MP318 Pulverizer Jaw	✓	✓
	MP318 Shear Jaw	✓	✓
	MP318 Universal Jaw	✓	✓
	MP324 Concrete Cutter Jaw	✓	✓
	MP324 Demolition Jaw	✓	✓
	MP324 Pulverizer Jaw	✓	✓
	MP324 Shear Jaw	✓	✓
	MP324 Tank Shear Jaw	✓	✓
	MP324 Universal Jaw	✓	✓
	Demolition and Sorting Grapples	G324	✓
G332		✓	✓
Mobile Scrap and Demolition Shears	S3025 Flat Top	✓	✓
	S3035 Flat Top	✓	✓
Pulverizers	P318 Primary Pulverizer	✓	✓
	P324 Primary Pulverizer	✓	✓
Rotary Cutters	RC15	✓	✓
	RC20	✓	✓

(continued on next page)

352 UHD Hydraulic Excavator Specifications

Attachments Offering Guide – Europe (continued)

Not all attachments are available in all regions. Consult your Cat dealer for configurations available in your region.

Match

HCS70/55 COUPLER ATTACHMENTS

Undercarriage		H-VG			
Counterweight		11.35 mt (25,022 lb) (Removal)		12.0 mt (26,455 lb)	
Boom Type		UHD 28 m (91'10")		UHD 28 m (91'10")	
Stick Length		UHD 28 m (91'10")		UHD 28 m (91'10")	
Multi-Processors	MP318 Concrete Cutter Jaw	✓		✓	
	MP318 Demolition Jaw	✓		✓	
	MP318 Pulverizer Jaw	✓		✓	
	MP318 Shear Jaw	✓		✓	
	MP318 Universal Jaw	✓		✓	
	MP324 Concrete Cutter Jaw	✓		✓	
	MP324 Demolition Jaw	✓		✓	
	MP324 Pulverizer Jaw	✓		✓	
	MP324 Shear Jaw	✓		✓	
	MP324 Tank Shear Jaw	✓		✓	
	MP324 Universal Jaw	✓		✓	
Demolition and Sorting Grapples	G324	✓		✓	
	G332	✓		✓	
Mobile Scrap and Demolition Shears	S3025 Flat Top	✓		✓	
	S3035 Flat Top	✓		✓	
Pulverizers	P318 Primary Pulverizer	✓		✓	
	P324 Primary Pulverizer	✓		✓	
Rotary Cutters	RC15	✓		✓	
	RC20	✓		✓	

HCS70/55 COUPLER ATTACHMENTS

Undercarriage		H-VG			
Counterweight		11.35 mt (25,022 lb) (Removal)		12.0 mt (26,455 lb)	
Boom Type		Retrofit (Bent)	Retrofit (Straight)	Retrofit (Bent)	Retrofit (Straight)
Mobile Scrap and Demolition Shears	S2090	✓	✓	✓	✓
	S3070 Flat Top	✓	✓	✓	✓
	S3090 Flat Top	✓	✓	✓	✓

352 UHD Hydraulic Excavator Specifications

Attachments Offering Guide – Japan

Not all attachments are available in all regions. Consult your Cat dealer for configurations available in your region.

Match

No Match

PIN-ON ATTACHMENTS

Undercarriage		Hydraulic-Variable Gauge					
Counterweight		11.35 mt (25,022 lb) (Removal)			12.0 mt (26,455 lb)		
Boom Type		Retrofit (Bent)	Retrofit (Straight)	UHD 28 m (91'10")	Retrofit (Bent)	Retrofit (Straight)	UHD 28 m (91'10")
Stick Length		3.35 m (11'0")	3.35 m (11'0")	UHD 28 m (91'10")	3.35 m (11'0")	3.35 m (11'0")	UHD 28 m (91'10")
Hydraulic Hammers	H160 S	✓	✓		✓	✓	
	H180 S	✓	✓		✓	✓	
	H190 S	✓	✓		✓	✓	
Mobile Scrap and Demolition Shears	S3050 Flat Top	✓	✓		✓	✓	
Rotary Cutters	RC15			✓			✓
	RC20			✓			✓
	RC50	✓	✓		✓	✓	

CAT PIN GRABBER COUPLER ATTACHMENTS

Undercarriage		Hydraulic-Variable Gauge			
Counterweight		11.35 mt (25,022 lb) (Removal)		12.0 mt (26,455 lb)	
Boom Type		Retrofit (Bent)	Retrofit (Straight)	Retrofit (Bent)	Retrofit (Straight)
Stick Length		3.35 m (11'0")	3.35 m (11'0")	3.35 m (11'0")	3.35 m (11'0")
Hydraulic Hammers	H160 S	✓	✓	✓	✓
	H180 S	✓	✓	✓	✓
Rotary Cutters	RC50	✓	✓	✓	✓

BOOM-MOUNT ATTACHMENTS

Undercarriage		Hydraulic-Variable Gauge			
Counterweight		11.35 mt (25,022 lb) (Removal)		12.0 mt (26,455 lb)	
Boom Type		Retrofit (Bent)	Retrofit (Straight)	Retrofit (Bent)	Retrofit (Straight)
Stick Length		3.35 m (11'0")	3.35 m (11'0")	3.35 m (11'0")	3.35 m (11'0")
Mobile Scrap and Demolition Shears	S090	✓	✓	✓	✓
	S3070 Flat Top	✓	✓	✓	✓
	S3090 Flat Top	✓	✓	✓	✓

352 UHD Hydraulic Excavator Specifications

Attachments Offering Guide – North America

Not all attachments are available in all regions. Consult your Cat dealer for configurations available in your region.

Match

No Match

PIN-ON ATTACHMENTS

Undercarriage		Hydraulic-Variable Gauge										
		11.35 mt (25,022 lb) (Removal)					12.0 mt (26,455 lb)					
Boom Type	Stick Length	Retrofit (Bent)		Retrofit (Straight)		UHD 28 m (91'10")	Retrofit (Bent)		Retrofit (Straight)		UHD 28 m (91'10")	
		3.35 m (11'0")	3.90 m (12'10")	3.35 m (11'0")	3.90 m (12'10")	UHD 28 m (91'10")	3.35 m (11'0")	3.90 m (12'10")	3.35 m (11'0")	3.90 m (12'10")	UHD 28 m (91'10")	
Hydraulic Hammers	H160 S	✓	✓	✓	✓		✓	✓	✓	✓		
	H180 GC S	✓	✓	✓	✓		✓	✓	✓	✓		
	H180 S	✓	✓	✓	✓		✓	✓	✓	✓		
	H190 S	✓	✓	✓	✓		✓	✓	✓	✓		
Multi-Processors	MP318 Concrete Cutter Jaw		✓								✓	
	MP318 Demolition Jaw		✓								✓	
	MP318 Pulverizer Jaw		✓								✓	
	MP318 Shear Jaw		✓								✓	
	MP318 Universal Jaw		✓								✓	
	MP324 Concrete Cutter Jaw		✓								✓	
	MP324 Demolition Jaw		✓								✓	
	MP324 Pulverizer Jaw		✓								✓	
	MP324 Shear Jaw		✓								✓	
	MP324 Tank Shear Jaw		✓								✓	
	MP324 Universal Jaw		✓								✓	
	MP332 Concrete Cutter Jaw		✓								✓	
	MP332 Demolition Jaw		✓								✓	
	MP332 Pulverizer Jaw		✓								✓	
	MP332 Shear Jaw		✓								✓	
	MP332 Universal Jaw		✓								✓	
	MP345 Concrete Cutter Jaw	✓		✓	✓	✓	✓	✓	✓	✓	✓	
	MP345 Demolition Jaw	✓		✓	✓	✓	✓	✓	✓	✓	✓	
	MP345 Pulverizer Jaw	✓		✓	✓	✓	✓	✓	✓	✓	✓	
	MP345 Shear Jaw	✓		✓	✓	✓	✓	✓	✓	✓	✓	
MP345 Concrete Cutter Jaw-Flat Top	✓		✓	✓	✓	✓	✓	✓	✓	✓		
MP345 Demolition Jaw-Flat Top	✓		✓	✓	✓	✓	✓	✓	✓	✓		
MP345 Pulverizer Jaw-Flat Top	✓		✓	✓	✓	✓	✓	✓	✓	✓		
MP345 Shear Jaw-Flat Top	✓		✓	✓	✓	✓	✓	✓	✓	✓		
MP365 Concrete Cutter Jaw	✓											
Demolition and Sorting Grapples	G324					✓					✓	
	G332					✓					✓	
	G345	✓	✓	✓	✓		✓	✓	✓	✓		
	G345 Flat Top	✓	✓	✓	✓		✓	✓	✓	✓		

(continued on next page)

352 UHD Hydraulic Excavator Specifications

Attachments Offering Guide – North America (continued)

Not all Attachments are available in all regions. Consult your Cat dealer for configurations available in your region.

Match
 No Match
 1800 kg/m³ (3,000 lb/yd³)
 1200 kg/m³ (2,000 lb/yd³)

PIN-ON ATTACHMENTS (continued)

Undercarriage		Hydraulic-Variable Gauge									
Counterweight		11.35 mt (25,022 lb) (Removal)				12.0 mt (26,455 lb)					
Boom Type		Retrofit (Bent)		Retrofit (Straight)		UHD 28 m (91'10")	Retrofit (Bent)		Retrofit (Straight)		UHD 28 m (91'10")
Stick Length		3.35 m (11'0")	3.90 m (12'10")	3.35 m (11'0")	3.90 m (12'10")	UHD 28 m (91'10")	3.35 m (11'0")	3.90 m (12'10")	3.35 m (11'0")	3.90 m (12'10")	UHD 28 m (91'10")
Mobile Scrap and Demolition Shears	S3025 Flat Top					✓					✓
	S3035 Flat Top					✓					✓
	S3050 Flat Top										
Pulverizers	P245 Secondary Pulverizer	✓						✓			
	P318 Primary Pulverizer					✓					✓
	P324 Primary Pulverizer					✓					✓
	P332 Primary Pulverizer					✓					✓
	P345 Primary Pulverizer	✓	✓	✓	✓		✓	✓	✓	✓	
	P345 Primary Pulverizer-Flat Top	✓	✓	✓	✓		✓	✓	✓	✓	
Orange Peel Grapples	GSH455-1000			●			●	●	●	●	
	GSH455-1500			●			●	●	●	●	
	GSH455-2000			●			●	●	●	●	
	GSH555-1000			●			●	●	●	●	
	GSH555-1500			●			●	●	●	●	
Clamshell Grapples	CTV30-1900	●	●	●	●		●	●	●	●	
	CTV30-2300	●	●	●	●		●	●	●	○	
	CTV30-2500	●	●	●	●		●	○	○	○	
	CTV30-2700	●	●	○	○		●	○	○	○	
	CTV30-3400	○	○	○			○	○	○		
	CTV30-3800	○					○				
Rotary Cutters	RC15					✓					✓
	RC20					✓					✓
	RC50	✓	✓	✓	✓		✓	✓	✓	✓	

CAT PIN GRABBER COUPLER ATTACHMENTS

Undercarriage		Hydraulic-Variable Gauge								
Counterweight		11.35 mt (25,022 lb) (Removal)				12.0 mt (26,455 lb)				
Boom Type		Retrofit (Bent)		Retrofit (Straight)		Retrofit (Bent)		Retrofit (Straight)		
Stick Length		3.35 m (11'0")	3.90 m (12'10")	3.35 m (11'0")	3.90 m (12'10")	3.35 m (11'0")	3.90 m (12'10")	3.35 m (11'0")	3.90 m (12'10")	
Hydraulic Hammers	H160 S	✓	✓	✓	✓	✓	✓	✓	✓	✓
	H180 GC S	✓	✓	✓	✓	✓	✓	✓	✓	✓
	H180 S	✓	✓	✓	✓	✓	✓	✓	✓	✓
Multi-Processors	MP345 Concrete Cutter Jaw	✓	✓	✓	✓	✓			✓	
	MP345 Demolition Jaw	✓		✓		✓			✓	
	MP345 Pulverizer Jaw	✓		✓		✓				
	MP345 Shear Jaw	✓	✓	✓	✓	✓			✓	
	MP345 Shear Jaw-Flat Top	✓								
Demolition and Sorting Grapples	G345	✓	✓	✓	✓	✓	✓	✓	✓	✓
	G345 Flat Top	✓	✓	✓	✓	✓	✓	✓	✓	✓
Rotary Cutters	RC50	✓	✓	✓	✓	✓	✓	✓	✓	✓

(continued on next page)

352 UHD Hydraulic Excavator Specifications

Attachments Offering Guide – North America (continued)

Not all Attachments are available in all regions. Consult your Cat dealer for configurations available in your region.

Match

† Allowed usage on machine less than 50%

No Match

HCS70 COUPLER ATTACHMENTS

Undercarriage		Hydraulic-Variable Gauge	
		11.35 mt (25,022 lb) (Removal)	12.0 mt (26,455 lb)
Counterweight		UHD 28 m (91'10")	UHD 28 m (91'10")
Boom Type		UHD 28 m (91'10")	UHD 28 m (91'10")
Stick Length		UHD 28 m (91'10")	UHD 28 m (91'10")
Multi-Processors	MP318 Concrete Cutter Jaw	✓	✓
	MP318 Demolition Jaw	✓	✓
	MP318 Pulverizer Jaw	✓	✓
	MP318 Shear Jaw	✓	✓
	MP318 Universal Jaw	✓	✓
	MP324 Concrete Cutter Jaw	✓	✓
	MP324 Demolition Jaw	✓	✓
	MP324 Pulverizer Jaw	✓	✓
	MP324 Shear Jaw	✓	✓
	MP324 Tank Shear Jaw	✓	✓
	MP324 Universal Jaw	✓	✓
Demolition and Sorting Grapples	G324	✓	✓
	G332	✓	✓
Mobile Scrap and Demolition Shears	S3025 Flat Top	✓	✓
	S3035 Flat Top	✓	✓
Pulverizers	P318 Primary Pulverizer	✓	✓
	P324 Primary Pulverizer	✓	✓
Rotary Cutters	RC15	✓	✓
	RC20	✓	✓

HCS70/55 COUPLER ATTACHMENTS

Undercarriage		Hydraulic-Variable Gauge	
		11.35 mt (25,022 lb) (Removal)	12.0 mt (26,455 lb)
Counterweight		UHD 28 m (91'10")	UHD 28 m (91'10")
Boom Type		UHD 28 m (91'10")	UHD 28 m (91'10")
Stick Length		UHD 28 m (91'10")	UHD 28 m (91'10")
Multi-Processors	MP318 Concrete Cutter Jaw	✓	✓
	MP318 Demolition Jaw	✓	✓
	MP318 Pulverizer Jaw	✓	✓
	MP318 Shear Jaw	✓	✓
	MP318 Universal Jaw	✓	✓
	MP324 Concrete Cutter Jaw	✓	✓
	MP324 Demolition Jaw	✓	✓
	MP324 Pulverizer Jaw	✓	✓
	MP324 Shear Jaw	✓	✓
	MP324 Tank Shear Jaw	✓	✓
	MP324 Universal Jaw	✓	✓
Demolition and Sorting Grapples	G324	✓	✓
	G332	✓	✓
Mobile Scrap and Demolition Shears	S3025 Flat Top	✓	✓
	S3035 Flat Top	✓	✓
Pulverizers	P318 Primary Pulverizer	✓	✓
	P324 Primary Pulverizer	✓	✓
Rotary Cutters	RC15	✓	✓
	RC20	✓	✓

(continued on next page)

352 UHD Hydraulic Excavator Specifications

Attachments Offering Guide – North America *(continued)*

Not all Attachments are available in all regions. Consult your Cat dealer for configurations available in your region.

Match

HCS80 COUPLER ATTACHMENTS

Undercarriage		Hydraulic-Variable Gauge	
		11.35 mt (25,022 lb) (Removal)	12.0 mt (26,455 lb)
Counterweight		UHD 28 m (91'10")	UHD 28 m (91'10")
Boom Type		UHD 28 m (91'10")	UHD 28 m (91'10")
Stick Length		UHD 28 m (91'10")	UHD 28 m (91'10")
Multi-Processors	MP318 Concrete Cutter Jaw	✓	✓
	MP318 Demolition Jaw	✓	✓
	MP318 Pulverizer Jaw	✓	✓
	MP318 Shear Jaw	✓	✓
	MP318 Universal Jaw	✓	✓
	MP324 Concrete Cutter Jaw	✓	✓
	MP324 Demolition Jaw	✓	✓
	MP324 Pulverizer Jaw	✓	✓
	MP324 Shear Jaw	✓	✓
	MP324 Tank Shear Jaw	✓	✓
	MP324 Universal Jaw	✓	✓
Demolition and Sorting Grapples	G324	✓	✓
	G332	✓	✓
Mobile Scrap and Demolition Shears	S3025 Flat Top	✓	✓
Pulverizers	P318 Primary Pulverizer	✓	✓
	P324 Primary Pulverizer	✓	✓
Rotary Cutters	RC15	✓	✓
	RC20	✓	✓

BOOM-MOUNT ATTACHMENTS

Undercarriage		Hydraulic-Variable Gauge			
		11.35 mt (25,022 lb) (Removal)		12.0 mt (26,455 lb)	
Counterweight		Retrofit (Bent)	Retrofit (Straight)	Retrofit (Bent)	Retrofit (Straight)
Boom Type		Retrofit (Bent)	Retrofit (Straight)	Retrofit (Bent)	Retrofit (Straight)
Mobile Scrap and Demolition Shears	S2090	✓	✓	✓	✓
	S3070 Flat Top	✓	✓	✓	✓
	S3090 Flat Top	✓	✓	✓	✓

Standard and Optional Equipment

Standard and optional equipment may vary. Consult your Cat dealer for details.

	Standard	Optional		Standard	Optional
BOOMS, STICKS AND LINKAGES			CAB (continued)		
28 m (91'10") UHD front		✓	P5A fixed windshield	✓	
2.9 m (9'6") Retrofit stick		✓	Parallel wiper with washer	✓	
3.35 m (11'0") Retrofit stick		✓	Skylight wiper install capability	✓	
3.9 m (12'10") Retrofit stick		✓	LED interior lights	✓	
Advanced tool control, UHD		✓	Floor welcome light	✓	
Bucket linkage, TB family with lifting eye, Cat Grade		✓	Roller front sunscreen	✓	
Bucket linkage, UHD dedicated, C family with lifting eye		✓	Roller rear sunscreen		✓
Transport cradle for front		✓	OPG	✓	
CAB			Washable floor mat	✓	
Tilt-up demolition cab with P5A laminated front and roof glass	✓		Beacon ready	✓	
High-resolution 254 mm (10") LCD touch screen monitor	✓		Auxiliary relay	✓	
Automatic bi-level air conditioner	✓		CAT TECHNOLOGY		
Jog dial and shortcut keys for monitor control	✓		Cat Equipment Management:		
Keyless push-to-start engine control	✓		– VisionLink®	✓ ¹	
Height-adjustable console, infinite with no tool	✓		– VisionLink Productivity		✓ ²
Tilt-up left-side console	✓		– Remote Flash	✓	
Cat Stick Steer	✓		CAT TECHNOLOGY – RETROFIT BOOM		
Heated and cooled seat with automatic adjustable suspension	✓		Cat Grade 2D	✓	
51 mm (2") orange seat belt	✓		Cat Payload:	✓	
Tilt rocker switch	✓		– Static weigh		
Sky wiper switch	✓		– Semi-automatic calibration		
Bluetooth® integrated radio (including USB, auxiliary port and microphone)	✓		– Payload/cycle information		
2 × 12V DC outlets	✓		– USB reporting capability		
Document storage	✓		Cat Payload:		
Rear head storage net and lunchbox holder	✓		– On-the-go weighing	✓	
Oversized cup holder and bottle handler	✓		– Semiautomatic calibration	✓	
Coat hook	✓		– Payload/cycle information	✓	
Fixed one-piece P5A skylight hatch	✓		– VisionLink Productivity back office reporting		✓ ²
			Cat Advanced Payload:		
			– Daily totals		✓
			– Custom lists		✓
			– Smart weight target		✓
			– E-ticket Integration		✓ ²
			ELECTRICAL SYSTEM		
			Maintenance-free 1,000 CCA batteries	✓	
			Centralized electrical disconnect switch	✓	
			LED chassis light –1,800 lumens	✓	
			Premium surround lighting package		✓

¹Provides core telematics data to manage health, maintenance insights, and condition monitoring. Other plans available for more comprehensive data reporting. Consult your Cat dealer for details.

²VisionLink subscription required. Consult your Cat dealer for details.

(continued on next page)

352 UHD Standard and Optional Equipment

Standard and Optional Equipment *(continued)*

Standard and optional equipment may vary. Consult your Cat dealer for details.

	Standard	Optional		Standard	Optional
ENGINE			SAFETY AND SECURITY		
Three selectable modes: Power, Smart, Eco	✓		2D E-Fence (swing)	✓	
Automatic engine speed control	✓		Auto hammer stop	✓	
Up to 4500 m (14,760 ft) altitude capability	✓		Caterpillar One Key security system	✓	
Reversing fan	✓		Lockable external tool/storage box	✓	
52° C (126° F) high-ambient cooling	✓		Lockable door, fuel, and hydraulic tank locks	✓	
-18° C (0° F) cold start capability	✓		Lockable fuel drain compartment	✓	
-32° C (-25° F) cold start capability		✓	Lockable disconnect switch	✓	
115 Amp alternator	✓		Service platform with anti-skid plate and recessed bolts	✓	
Electric fuel priming pump	✓		Right-hand handrail and handhold	✓	
Primary filter with water separator and water separator indicator switch	✓		Signaling/warning horn	✓	
Cold start block heater		✓	Travel alarm		✓ ⁴
Ether starting aid		✓	Swing alarm		✓
Double element air filter with integrated pre-cleaner	✓		Rear and right-hand-sideview cameras	✓	
Side-by-side cooling system	✓		Visibility mirror package	✓	
Secure start with pin code	✓		Inspection lighting		✓
Remote disable	✓		360° visibility		✓
HYDRAULIC SYSTEM			SERVICE AND MAINTENANCE		
Boom lowering check valve	✓		Integrated vehicle health management system	✓	
Stick lowering check valve	✓		Grouped location for engine oil and fuel filters	✓	
SmartBoom™ with Boom lowering check valve (BLCV) and Overload Warning Device (not compatible with 2D E-Fence and Cat Production Measurement [CPM])	✓ ³		Scheduled Oil Sampling (S·O·S SM) ports	✓	
Fine swing	✓		QuickEvac™ maintenance ready		✓
Boom and stick regeneration circuit	✓		Diagnostic technician (remote ET)	✓	
Electronic main control valve	✓		Electric refueling pump with auto shutoff		✓ ³
Hydraulic efficiency monitoring		✓	UNDERCARRIAGE AND STRUCTURES		
Automatic hydraulic oil warmup	✓		Hydraulic Variable Gauge undercarriage	✓	
Automatic swing parking brake	✓		Grease lubricated track, resin seal	✓	
Reverse swing damping valve	✓		Towing eye on base frame	✓	
High performance hydraulic return filter	✓		12.0 mt (26,455 lb) counterweight	✓	
Two-speed travel	✓		600 mm (24") triple grouser track shoes		✓
Bio hydraulic oil capability	✓		700 mm (28") triple grouser track shoes		✓
Combined two-way auxiliary circuit	✓		Full-length track guiding guards	✓	
High and medium-pressure auxiliary circuits	✓		HD travel motor guard	✓	
Quick coupler circuit	✓		HD bottom guard	✓	

³Europe only.

⁴Mandatory in North America.

Dealer Installed Kit and Attachments

Attachments may vary. Consult your Cat dealer for details.

OTHER ATTACHMENTS

- Duct ready kit for Advanced Cabin Filtration (ACF)
- Worktool camera kit

SAFETY AND SECURITY

- Cat Detect – People Detection

352 UHD Environmental Declaration

The following information applies to the machine at the time of final manufacture as configured for sale in the regions covered in this document. The content of this declaration is valid as of the date issued; however, content related to machine features and specifications are subject to change without notice. For additional information, please see the machine's Operation and Maintenance Manual.

For more information on sustainability in action and our progress, please visit <https://www.caterpillar.com/en/company/sustainability>.

Engine

- The Cat® C13B engine meets U.S. EPA Tier 4 Final, EU Stage V, and Japan 2014 emission standards.
 - All Cat nonroad U.S. EPA Tier 4 Final, EU Stage V, Japan 2014, Korea Tier 5, India CEV Stage V, and China Nonroad Stage IV diesel engines are required to use ULSD (ultra-low sulfur diesel with 15 ppm of sulfur or less) or ULSD blended with the following lower-carbon intensity fuels** up to:
 - ✓ 20% biodiesel FAME (fatty acid methyl ester)*
 - ✓ 100% renewable diesel, HVO (hydrotreated vegetable oil) and GTL (gas-to-liquid) fuels
- Refer to guidelines for successful application. Please consult your Cat dealer or "Caterpillar Machine Fluids Recommendations" (SEBU6250) for details.

**Engines with no aftertreatment devices can use higher blends, up to 100% biodiesel (for use of blends higher than 20% biodiesel, consult your Cat dealer).*

***Tailpipe greenhouse gas emissions from lower-carbon intensity fuels are essentially the same as traditional fuels.*

Air Conditioning System

- The air conditioning system on this machine contains the fluorinated greenhouse gas refrigerant R134a (Global Warming Potential = 1430). The system contains 1.0 kg (2.2 lb) of refrigerant which has a CO₂ equivalent of 1.430 metric tonnes (1.576 tons).

Paint

- Based on best available knowledge, the maximum allowable concentration, measured in parts per million (PPM), of the following heavy metals in paint are:
 - Barium < 0.01%
 - Cadmium < 0.01%
 - Chromium < 0.01%
 - Lead < 0.01%

Sound Performance

With cooling fan at maximum value:

External (ISO 6395:2008) – 108 dB(A)

Internal (ISO 6396:2008) – 72 dB(A)

- Hearing protection may be needed when operating with an open operator station and cab (when not properly maintained or doors/windows open) for extended periods or in a noisy environment.

Oils and Fluids

- Caterpillar factory fills with ethylene glycol coolants. Cat Diesel Engine Antifreeze/Coolant (DEAC) and Cat Extended Life Coolant (ELC) can be recycled. Consult your Cat dealer for more information.
- Cat Bio HYDO™ Advanced is an EU Ecolabel approved biodegradable hydraulic oil.
- Additional fluids are likely to be present, please consult the Operations and Maintenance Manual or the Application and Installation guide for complete fluid recommendations and maintenance intervals.

Features and Technology

- The following features and technology may contribute to fuel savings and/or carbon reduction. Features may vary. Consult your Cat dealer for details.
 - Smart mode matches machine power to digging requirements automatically
 - Eco mode helps minimize fuel consumption for light applications
 - Extended service intervals help decrease maintenance costs
 - Hydraulic reversing fan cools engine on demand to help reduce fuel consumption
 - Increase operating efficiency with standard Cat technologies that lower operator fatigue and operating costs



オフロード法2014年
基準適合



国土交通省
超低騒音型建設機械

For more complete information on Cat products, dealer services, and industry solutions, visit us on the web at www.cat.com

© 2024 Caterpillar
All rights reserved

Materials and specifications are subject to change without notice. Featured machines in photos may include additional equipment. See your Cat dealer for available options.

CAT, CATERPILLAR, LET'S DO THE WORK, their respective logos, "Caterpillar Corporate Yellow," the "Power Edge" and Cat "Modern Hex" trade dress as well as corporate and product identity used herein, are trademarks of Caterpillar and may not be used without permission. "VisionLink is a trademark of VirtualSite Solutions LLC, registered in the United States and in other countries."

Based on the Labor, Safety and Health Laws in Japan, employer of small construction equipment are required to provide specific training for all operators on machines with ship weight less than 3 metric ton. For machines greater than 3 metric ton, operator needs to obtain operator license certification from a Government approved registered training school.

AEXQ4031-00 (11-2024)
Build Number: 08D
(Europe, Japan, N Am)

