

# 330

## HYDRAULIC EXCAVATOR



---

Net Power – ISO 9249  
Operating Weight  
Maximum Digging Depth

203.7 kW (273 hp)  
31 400 kg (69,200 lb)  
7240 mm (23.9 ft)



# 330

## HYDRAULIC EXCAVATOR

The Cat® 330 raises the bar for performance and fuel efficiency in this size class. With an equipment line full of world-class standard factory technology, a cab focused on operator comfort and productivity, plus lower fuel and maintenance costs, the 330 will set a new pace for productivity and profit in your operation.

Not all features are available in all regions. Consult your Cat dealer for specific configurations available in your region.



### HIGH FUEL EFFICIENCY

With larger hydraulic pumps, an advanced electro-hydraulic system, and increased bucket capacity, this machine delivers more work per unit of fuel.

### LOW MAINTENANCE COSTS

Fewer maintenance items paired with extended and more synchronized maintenance intervals increases uptime and reduces costs.

### HIGH OPERATING EFFICIENCY

Offering world-class standard factory-equipped technology to help improve operation output, including Cat Grade with 2D, Grade with Assist, and Payload.

# LATEST FEATURES



## Machine Setup Simplification

- At the touch of fingertips and navigating user-friendly icons, the latest operator oriented User Interface (UI) maximizes uptime and gets crews to work without delay. From re-ordering work tool lists to creating new work tool combinations as needed, operators can quickly set up machines and easily access information.
- The interface allows operators to maintain accuracy and makes the most of every second of their shift. Adding the ability to input couplers and attachments into the system makes setting up work tool combinations highly efficient by significantly reducing calibration time. It also eliminates the need to measure up again when changing Cat work tool attachments and makes it manageable for a single person to check and adjust for bucket wear.

## Cat® Grade 3D Ready

- The Cat Grade 3D Ready option includes all the hardware required for the Grade with 3D system, installed and tested from the factory. This option provides an easier upgrade path for customers who want to add Grade with 3D after their initial purchase. To activate, contact your Cat dealer to purchase the required 3D software licenses. Licenses can be installed remotely or manually loaded onto the machine.

## Cat Payload and Advanced Payload\*

- Cat Payload provides operators with on-the-go weighing to help them hit load targets and avoid overloading, underloading, or misloading materials. Advanced Payload is a system upgrade that offers expanded features and capabilities, including custom tags, daily totals, and electronic ticketing. Combine Payload with VisionLink® Productivity\*\* to analyze jobsites and individual assets for remote management of production targets and key metrics.

\* Payload technologies are not legal for trade.

\*\* VisionLink subscription required.

Not all features are available in all regions. Please check with your local Cat dealer for specific offering availability in your area. Build Number: 07H

# PERFORMANCE AND PRODUCTIVITY

- Larger hydraulic pumps and an advanced electro-hydraulic help improve fuel efficiency.
- Lift more with improved lift capacity and increased bucket size over the 330F excavator.
- Make working on slopes easier with improved swing torque over the 330F excavator.
- Standard Cat® technologies help reduce operator fatigue and maintenance costs, increasing operating efficiency.
- The C7.1 engine can run on biodiesel up to B20 and meets U.S. EPA Tier 4 Final, EU Stage V, Japan 2014, and Korea Stage V emission standards with an after treatment system that requires no maintenance or downtime.
- The advanced hydraulic system provides the optimum balance of power and efficiency while giving you the control you need for precise digging requirements
- Match the excavator to the job with power modes; let Smart mode automatically match engine and hydraulic power to digging conditions.
- Advansys™ bucket tips increase penetration and improve cycle times. Tip changes can be done quickly with a simple lug wrench instead of a hammer or special tool, improving safety and uptime.
- Auxiliary hydraulic options give you the versatility to use a wide range of Cat attachments.
- Available Smart Boom™ lets the boom freely travel up and down without using any pump flow so operators can focus on stick and bucket work. The benefits are reduced operator stress and reduced fuel consumption.\*
- Don't let the temperature stop you from working. The excavator has a standard high-ambient temperature capability of 50° C (122° F) with de-rate and cold start capability of -18° C (0° F). An optional -32° C (-25° F) cold start package is available.

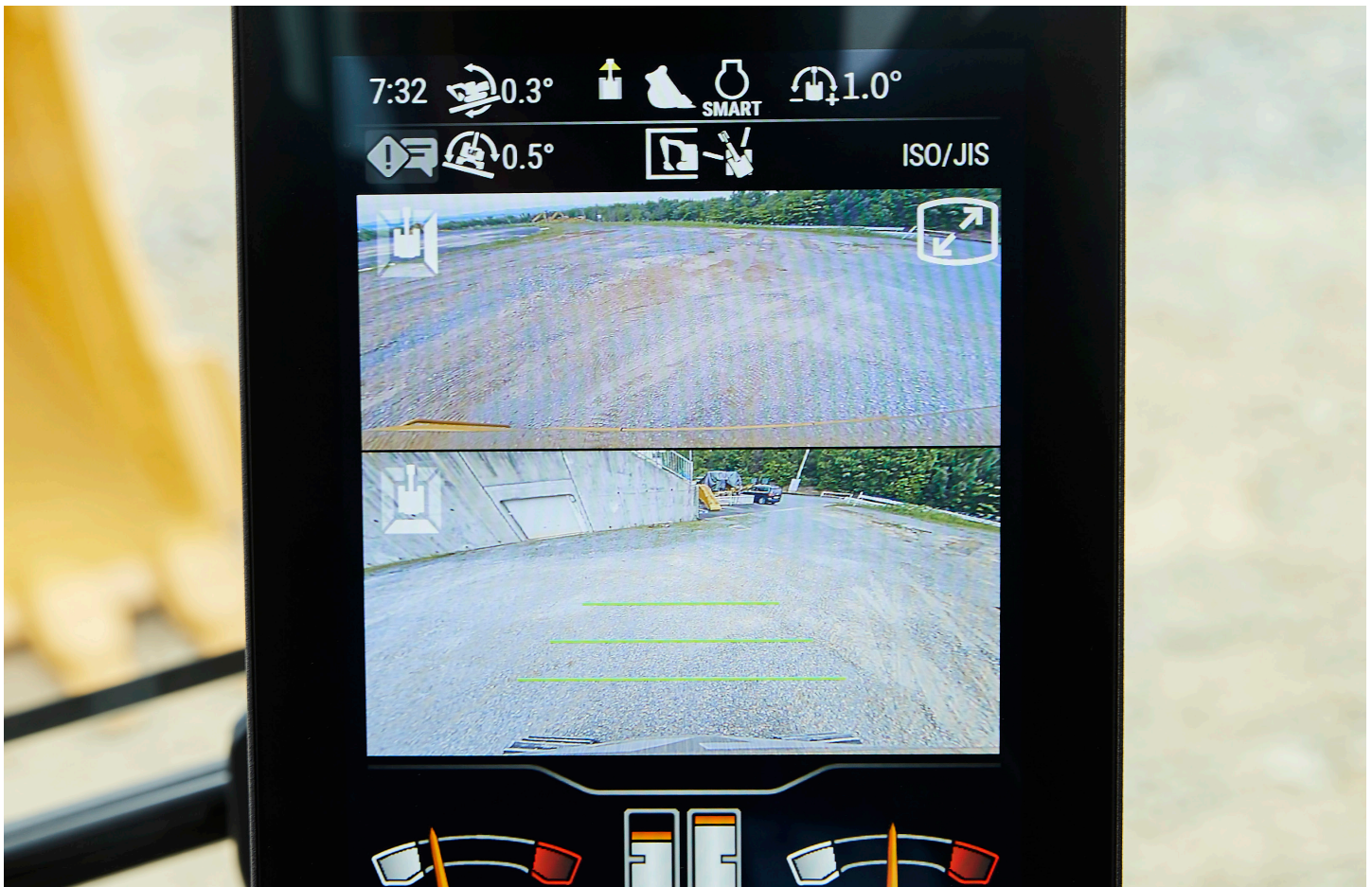
\* Available in Europe only.



# PRODUCTIVITY WITH TECHNOLOGY

- The latest operator oriented User Interface (UI) has been designed to maximize uptime by allowing operators to easily reorder work tool lists and quickly create new work tool combinations. It also eliminates the need to measure up again when changing Cat work tool attachments and makes it manageable for a single person to check and adjust for bucket wear.
- Cat Grade with 2D for excavators is an indicate system that helps operators reach grade faster.\* Select your target depth and slope and watch the Grade with 2D system use on-board processors and sensors to provide real-time guidance on the distance to grade.
- Cat Grade with 3D for excavators helps operators grade more quickly, accurately, and efficiently, improving productivity.\* It incorporates GNSS technology and RTK positioning guidance to streamline the grading process for complex designs commonly encountered on large infrastructure and commercial projects. This system allows operators to work confidently, eliminating guesswork while cutting and filling to precise specifications.
- The Cat Grade 3D Ready option includes all the hardware required for the Grade with 3D system, installed and tested from the factory. Activation requires the purchase of additional 3D software licenses.
- All Cat Grade systems are compatible with radios and base stations from Trimble, Topcon, and Leica.
- Standard Grade Assist helps you stay on grade – simply and effortlessly – with single-lever digging.
- Keep the tracks on ground in lifting and hard digging with Boom Assist.
- Set your desired bucket angle and let Bucket Assist automatically maintain the angle in sloping, leveling, fine grading, and trenching applications.
- Automatically stop excavator swing at operator-defined set points in truck loading and trenching applications with Swing Assist, which will help you use less effort and consume less fuel.
- Cat Payload helps you achieve precise load targets to improve your operating efficiency. Pick up a load of material – with a bucket and thumb combination or grapple and clamshell attachments – and get a real-time weight estimate without swinging.
- Advanced Payload is a system upgrade that offers expanded features and capabilities, including custom tags, daily totals, and electronic ticketing.
- Combine Payload with VisionLink® and remotely manage your production targets.
- Cat Operator Coaching allows operators of all experience levels to improve their efficiency and productivity. With tips and data at their fingertips, operators can track and improve their productivity through everyday work on the jobsite and prevent unnecessary machine wear and tear.

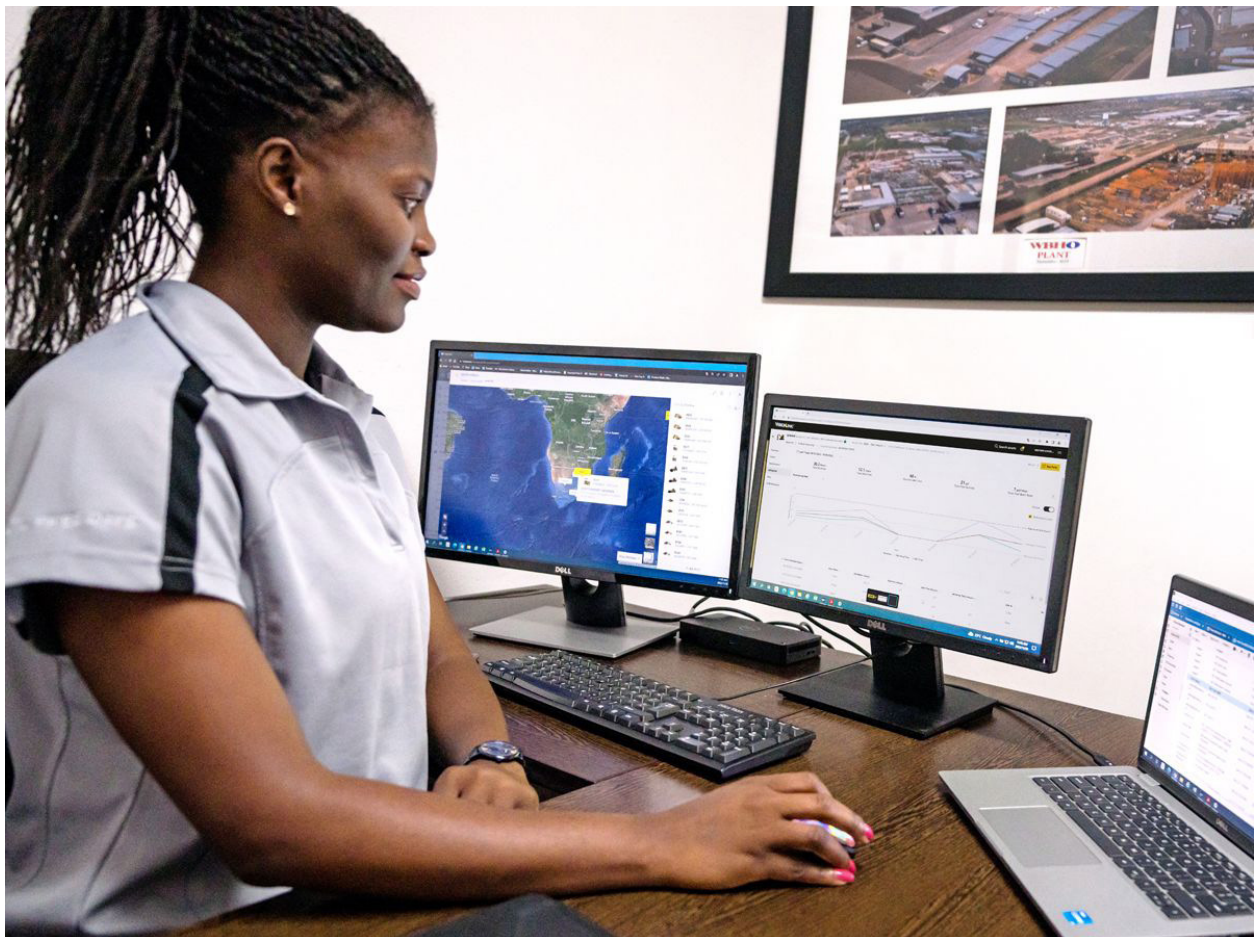
\* Compared with traditional grading methods.  
Availability may vary by region, consult your Cat dealer for more details.



# TAKE THE GUESSWORK OUT OF MANAGING YOUR EQUIPMENT

- VisionLink provides actionable data insights for all assets – regardless of fleet size or equipment manufacturer.\* Review equipment data from your desktop or mobile device to maximize uptime and optimize assets. Dashboards provide information such as hours, miles, location, idle time, and fuel utilization. Make informed decisions that lower costs, simplify maintenance, and improve safety and security on your jobsite.
- VisionLink Productivity gathers and summarizes machine telematics and jobsite data from all your equipment – regardless of the manufacturer.\* View actionable information such as idle time, fuel burn, location, payload, load counts, total cycles, and more to improve machine efficiency, productivity, and utilization. Access data anywhere via a mobile, tablet, or desktop device – on or off the jobsite.
- Cat Inspect is a mobile application that allows you to easily perform digital preventative maintenance (PM) checks, inspections, and daily walkarounds. Inspections can easily be integrated with other Cat data systems like VisionLink so you can keep a close eye on your fleet.
- Remote Troubleshoot is a mobile application that allows your Cat dealer to perform diagnostic testing on your connected machine remotely to help ensure that issues are resolved quickly and with less downtime.
- Remote Flash is a mobile application that allows you to update onboard software without a technician being present, allowing you to initiate software updates when convenient, increasing your overall operating efficiency.
- The Cat PL161 attachment locator allows you to track attachments across all worksites, reduce the number of lost attachments, and plan for attachment maintenance and replacement. The work tool recognition feature automatically adjusts machine settings based on the selected tool.

\*Data field availability can vary by equipment manufacturer.



# DESIGNED FOR OPERATORS

- Choose between Deluxe and Premium cabs – both with automatic climate control.
- The Deluxe seat is heated and air adjustable. The Premium seat is heated and cooled and adjusts automatically.
- Get in and out of the cab easier using the tip-up left console.
- Feel more comfortable in the cab while you work with reduced cab vibrations from advanced viscous mounts.
- Control the excavator comfortably with easy-to-reach controls all located in front of you.
- Stow your gear with plenty of in-cab storage beneath and behind the seat, overhead, and in the consoles. A cup holder, document holder, bottle holder, and coat hook are also provided.
- Use the standard radio's USB ports and Bluetooth® technology to connect personal devices and make hands-free calls.
- Make operating easier with the touch of a joystick button. Additional auxiliary relays allow you to power on or turn off a CB radio, beacon light, and even a dust suppression watering system without taking your hands off the joysticks.



# SIMPLE TO OPERATE



- Start the engine with a push button; use a Bluetooth key fob or the unique Operator ID function.
- Make operating easier with the touch of a joystick button. Additional auxiliary relays allow you to power on or turn off a CB radio, beacon light, and even a dust suppression watering system without taking your hands off the joysticks.
- Navigate quickly on the standard high-resolution 203 mm (8 in) touchscreen monitor, or with the optional 254 mm (10 in) touchscreen monitor, or with the aid of the jog dial control.
- Protect your hammer tool from overheating and rapid wear. Auto hammer stop warns you after 15 seconds of continuous firing and then automatically shuts it off after 30 seconds – all to extend the tool's service life.
- Not sure how a function works or how to maintain the excavator? Always have the operator's manual at your fingertips in the touchscreen monitor.
- The Cat PL161 attachment locator is a Bluetooth device designed to let users know where their attachments are across all worksites, reduce the number of lost attachments, and plan for attachment maintenance and replacement. The PL161 integrates easily into VisionLink for full fleet management of machines and attachments from one smartphone or tablet dashboard to view location and tracking details.
- Save more time and energy with the available work tool recognition feature. A simple shake of the attached tool confirms its identity and ensures all the attachment settings (pressure, flow, and dimensions) are correct so you can work quickly and efficiently.\*
- Auto Dig Boost increases power by up to 8% for better bucket penetration, shorter cycle times, and greater payloads.\*\*
- Make moving the excavator much easier with Cat Stick Steer. Simply push a button and use one hand to travel and turn instead of both hands or feet on levers or pedals.
- Need more lift during your shift? Turn on Auto Heavy Lift and get up to 8% more power exactly when you need it for as long as you need it.\*\*
- Tiltrotator attachments – ours or other brands – work seamlessly with Cat 2D Grade, Assist, Payload, and E-Fence. With no additional hardware required, all you have to do is simply select "Third Party Tiltrotator System Installation" in the monitor, do the calibration, and get to work.

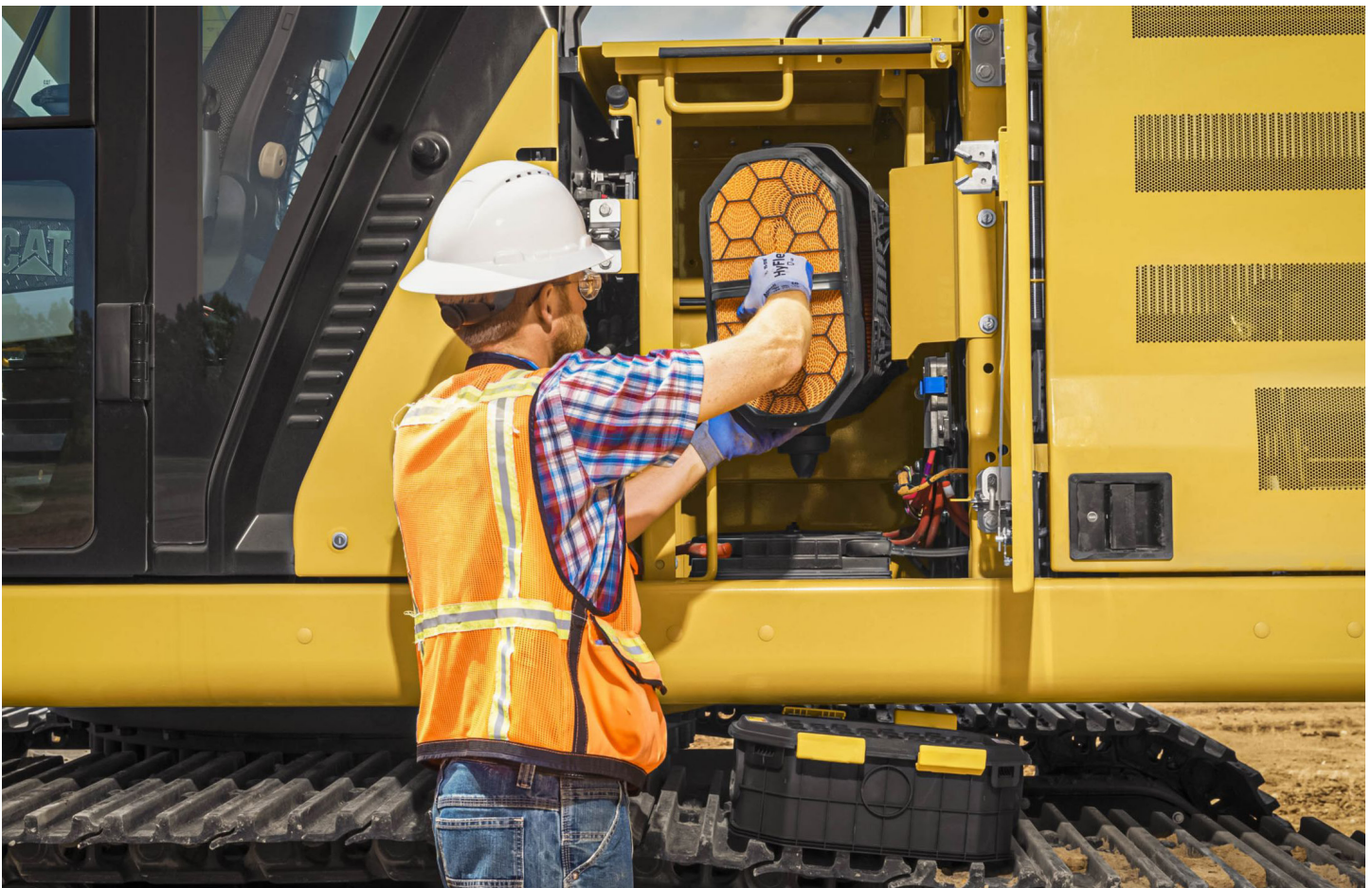
\* Automated attachment settings must be enabled within each machine configuration. Consult your Cat dealer for details.

\*\* Auto Dig Boost and Auto Heavy Lift calculations are based on 380 bar (boost pressure) divided by 350 bar (standard pressure). Does not apply to long reach excavators.



# LOWER MAINTENANCE COSTS

- Expect lower maintenance costs compared to the 330F.
- Do all daily maintenance at ground level.
- Check engine oil level quickly and safely with the ground-level engine oil dipstick; fill and check engine oil on top of the machine with a conveniently located second dipstick.
- Track your excavator's filter life and maintenance intervals via the in-cab monitor.
- Do no required maintenance on the Cat Clean Emissions Module.
- Using Cat genuine oil and filters and doing your typical Scheduled Oil Sampling (S-O-S<sup>SM</sup>) monitoring will extend the current service interval to 1,000 hours, giving you greater uptime to do more work.
- The advanced air intake filter with pre-cleaner has a high dust holding capacity.
- The latest hydraulic oil filter provides high-quality filtration performance and features anti-drain valves to keep oil clean when the filter is replaced, and the 3,000-hour extended replacement interval offers efficiency and convenience.
- High-efficiency cooling fans run only when needed; you can program intervals so they automatically reverse to keep cores clean without interrupting your work.
- S-O-S ports are on ground level, simplifying maintenance and allowing for quick, easy extraction of fluid samples for analysis.
- Boost productivity with proactive service reminders. The integrated vehicle health management system alerts the operator with step-by-step service guidance, along with parts needed, so you don't experience any unnecessary downtime.



# SAFELY HOME EVERY DAY



- Cat® Lift Assist helps avoid machine tipping. With visual and auditory alerts, you'll know if your load is within the excavator's safe working range limits.
- Access 100% of daily maintenance points from ground level – no need for you to climb on top of the excavator.
- The standard rollover protective structure (ROPS) cab meets ISO 12117-2:2008 requirements.
- Enjoy great visibility into the trench, in each swing direction, and behind you with the help of smaller cab pillars, larger windows, and a flat engine hood design.
- The standard hydraulic lockout lever isolates all hydraulic and travel functions in the lowered position.
- Ground-level shut-off switch stops all fuel to the engine when activated and shuts down the machine.
- A rearview camera and a right-side-view camera are standard. Upgrade to 360° visibility and you'll easily visualize objects and personnel around the excavator in a single view.
- Enhance jobsite safety. Add a swing alarm to alert people when you're rotating from trench to stockpile and back again.
- Latest right service platform design provides easy, safe, and quick access to upper service platform; the service platform steps use anti-skid punch plate to prevent slipping.
- Available boom and stick lowering check valves prevent reverse flow, keeping your front linkage securely in place should the hydraulic system unexpectedly lose power.
- Optional Cat Detect – People Detection helps protect the most valuable asset on any jobsite – people. The system uses smart cameras with depth sensors to provide the operator with visual and auditory alerts so he or she can take immediate action when a person is too close to the excavator.\*
- Optional Cat Command remote control enables equipment operators to work safely outside the machine when working in hazardous environments. Command offers the choice of handheld consoles\*\* (line-of-sight) or long-distance virtual stations (non-line-of-sight). Deep integration with machine systems enables efficiency and productivity by maintaining the use of in-cab technology\*\* features (Grade, Payload, Assist, etc.).
- 2D E-Fence prevents the excavator from moving outside of operator-defined set points; the system works with thumb and bucket combinations along with hammer, grapple, and clamshell attachments.
- Make service work easier with optional inspection lighting. With the flip of a switch, lights will illuminate the engine, pump, battery, and radiator compartments to enhance visibility.

\* The system may not detect personnel in certain circumstances, such as fast swing speeds, people lying down or crouching, or when cameras are impaired by low light conditions (dusk, dawn, overcast), inclement weather (snow, rain, fog), or other similar conditions. For limitations of use, refer to the operation and maintenance manual.

\*\* Operator assist features for the Command Console are not available in Europe, Australia, and New Zealand.

- The Cat C7.1 engine meets U.S. EPA Tier 4 Final, EU Stage V, Japan 2014 and Korea Stage V emission standards.
- The 330 emits lower CO<sub>2</sub> emissions compared to the previous 330F.
- Cat diesel engines are required to use ULSD (ultra-low sulfur diesel fuel with 15 ppm of sulfur or less) or ULSD blended with the following lower-carbon intensity fuels\*\* up to: 20% biodiesel FAME (fatty acid methyl ester)\* or 100% renewable diesel, HVO (hydrogenated vegetable oil) and GTL (gas-to-liquid) fuels. Refer to guidelines for successful application. Please consult your Cat dealer or “Caterpillar Machine Fluids Recommendations” (SEBU6250) for details.
- Cat Grade technologies combine advanced guidance with optional automated machine control helping you reach grading targets while reducing fuel burn and greenhouse gas emissions by improving efficiency, jobsite productivity, and accuracy.
- Auto Engine Speed Control reduces unnecessary fuel burn and greenhouse gas emissions by allowing the engine to automatically go into idle mode when the machine is not working.
- Cat Payload for excavators provides on-the-go material weighing which helps reduce fuel burn by improving loading efficiency, jobsite productivity, and eliminating trips to the scale.
- Extended maintenance intervals not only reduce downtime but decrease the amount of fluid and filters that are replaced over the life of the machine.
- Cat VisionLink® displays the CO<sub>2</sub> emissions for monitored assets, calculated by fuel type for the Runtime Fuel Burned each day in a selected date range.
- Remote Flash minimizes downtime and maintenance time while keeping your asset running with maximum efficiency. Alerts for machine updates are sent virtually from your Cat dealer and updates can be deployed without a dealer technician needing to be on site.

\* Engines with no aftertreatment devices can use higher blends, up to 100% biodiesel (for use of blends higher than 20% biodiesel, consult your Cat dealer).

\*\* Tailpipe greenhouse gas emissions from lower-carbon intensity fuels are essentially the same as traditional fuels.



# MORE THAN MACHINES

BUILT AROUND YOUR SUCCESS

When you buy Cat equipment, you get so much more than the machine. You also get the support of a world-class dealer network, backed by a range of flexible solutions, technology, tools, and more.



## CUSTOMER VALUE AGREEMENTS

A Customer Value Agreement (CVA) from your Cat dealer helps you do more and worry less. A CVA simplifies machine ownership and maintenance, adds the security of expert dealer support, and gives you the peace of mind from effective equipment health management.

## GENUINE CAT PARTS

Genuine Cat parts deliver the highest level of reliability and productivity. Order direct from your Cat dealer or shop online at [parts.cat.com](http://parts.cat.com).

## REPAIR OPTIONS

A broad range of repair options gives you choices that work with your needs, budget, and timeline. Every repair is performed by expert Cat technicians. You'll receive smart repair advice, a timely, accurate quote, and service that gets your machine back into action quickly.

## FINANCIAL SERVICES

Count on Cat Financial to provide the best finance and extended protection solutions for your business. For more than 30 years, we have helped our customers succeed through financial service excellence.



DOZERS



SKID STEERS



MATERIAL HANDLERS



EXCAVATORS



WHEEL LOADERS



TRACK LOADERS

INCREASE YOUR PRODUCTIVITY AND PROFIT

# WITH CAT ATTACHMENTS

You can easily expand the performance of your machine by utilizing any of the variety of Cat attachments. Each Cat attachment is designed to fit the weight and horsepower of Cat excavators for improved performance, safety, and stability.

## BUCKETS



## HYDRAULIC HAMMERS



## PREVENT HAMMER WEAR AND TEAR

Protect your hammer tool from overheating and rapid wear. Auto hammer stop warns you after 15 seconds of continuous firing and then automatically shuts it off after 30 seconds – all to extend the tool's service life.

## GRAPPLES



## TILTROTATOR



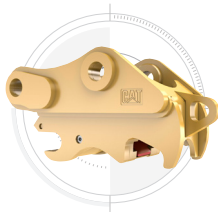
## DO HARD-TO-REACH WORK

With 360° rotation and 40° side-to-side tilting action, a Cat tiltrotator will help you get complex work done faster. A new system upgrade from the factory allows the tool to work with Cat 2D Grade, Assist, Payload, and E-Fence. It includes factory-fit joysticks, but uses the standard cab monitor to display the tool and engage its SecureLock™ so you don't need to spend money on an extra monitor. It also works seamlessly with other brands with no additional hardware required. All you have to do is simply select "Third Party Tiltrotator System Installation" in the monitor, do the calibration, and get to work.

## SECONDARY PULVERIZERS



## QUICK COUPLERS



## MULTI-PROCESSORS

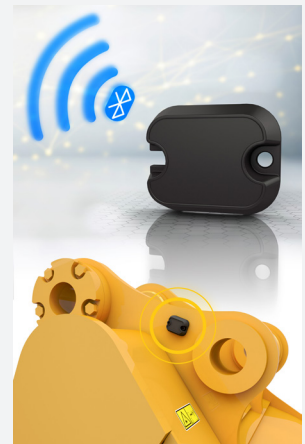


## VIBRATORY PLATE COMPACTORS



## FIND YOUR ATTACHMENTS FAST

The Cat® PL161 attachment locator allows you to track attachments across all worksites, helping to reduce the number of lost attachments and plan for attachment maintenance and replacement.



The work tool recognition feature automatically adjusts machine settings based on the selected tool. The PL161 integrates easily into VisionLink® for full fleet management of machines and attachments to view location and tracking details.

# TECHNICAL SPECIFICATIONS

## Engine

|                                |  |                     |
|--------------------------------|--|---------------------|
| Net Power - ISO 9249           | 203.7 kW   | 273 hp              |
| Net Power - ISO 9249 (DIN)     | 277 hp (metric)  |                     |
| Engine Model                   | Cat C7.1   |                     |
| Engine Power - ISO 14396       | 205 kW   | 275 hp              |
| Engine Power - ISO 14396 (DIN) | 279 hp (metric)  |                     |
| Bore                           | 105 mm   | 4 in                |
| Stroke                         | 135 mm   | 5 in                |
| Displacement                   | 7.01 L   | 428 in <sup>3</sup> |
| Biodiesel Capability           | Up to B20 <sup>1</sup>   |                     |
| Emissions                      | Meets U.S. EPA Tier 4 Final, EU Stage V, Korea Stage V, and Japan 2014 emission standards. |                     |

Net power advertised is the power available at the flywheel when the engine is equipped with fan, air intake system, exhaust system and alternator with engine speed at 2,200 rpm. Advertised power is tested per the specified standard in effect at the time of manufacture.

<sup>1</sup>Cat diesel engines are required to use ULSD (ultra-low sulfur diesel fuel with 15 ppm of sulfur or less) or ULSD blended with the following lower-carbon intensity fuels\*\* up to: 20% biodiesel FAME (fatty acid methyl ester)\* or 100% renewable diesel, HVO (hydrotreated vegetable oil) and GTL (gas-to-liquid) fuels. Refer to guidelines for successful application. Please consult your Cat dealer or "Caterpillar Machine Fluids Recommendations" (SEBU6250) for details.

\*Engines with no aftertreatment devices can use higher blends, up to 100% biodiesel (for use of blends higher than 20% biodiesel, consult your Cat dealer).

\*\*Tailpipe greenhouse gas emissions from lower-carbon intensity fuels are essentially the same as traditional fuels.

## Hydraulic System

|  |                         |           |
|--|-------------------------|-----------|
| Main System - Maximum Flow               | 560 L/min (148 gal/min) |           |
| Maximum Pressure - Equipment             | 35 000 kPa              | 5,075 psi |
| Maximum Pressure - Equipment - Lift Mode | 38 000 kPa              | 5,510 psi |
| Maximum Pressure - Travel                | 35 000 kPa              | 5,075 psi |
| Maximum Pressure - Swing                 | 29 800 kPa              | 4,320 psi |

## Swing Mechanism

|                      |            |               |
|----------------------|------------|---------------|
| Swing Speed*         | 11.5 r/min |               |
| Maximum Swing Torque | 110 kN-m   | 81,132 lbf-ft |

\*For CE-marked machine default value may be set lower.

## Weights

|  |           |           |
|--|-----------|-----------|
| Operating Weight   | 31 400 kg | 69,200 lb |
| Long undercarriage, Reach boom, R3.2 m (10'6") stick, Heavy Duty (HD) 1.76 m <sup>3</sup> (2.30 yd <sup>3</sup> ) bucket, 800 mm (31") triple grouser shoes and 6700 kg (14,770 lb) counterweight. |           |           |

## Service Refill Capacities

|                                   |       |           |
|-----------------------------------|-------|-----------|
| Fuel Tank Capacity                | 474 L | 125.2 gal |
| Cooling System                    | 25 L  | 6.6 gal   |
| Engine Oil                        | 25 L  | 6.6 gal   |
| Swing Drive                       | 10 L  | 2.6 gal   |
| Final Drive - Each                | 5.5 L | 1.5 gal   |
| Hydraulic System - Including Tank | 310 L | 81.9 gal  |
| Hydraulic Tank                    | 147 L | 38.8 gal  |
| Diesel exhaust fluid (DEF) Tank   | 41 L  | 10.8 gal  |

## Dimensions

|                              |  |         |
|------------------------------|--|---------|
| Boom                         | Reach 6.15 m (20'2")                           |         |
| Stick                        | Reach 3.2 m (10'6")                            |         |
| Bucket                       | HD 1.76 m <sup>3</sup> (2.30 yd <sup>3</sup> ) |         |
| Shipping Height - Top of Cab | 3060 mm  | 10 ft   |
| Handrail Height              | 3060 mm  | 10 ft   |
| Shipping Length              | 10 420 mm                                      | 34.2 ft |
| Tail Swing Radius            | 3130 mm  | 10.3 ft |
| Counterweight Clearance      | 1120 mm  | 3.7 ft  |
| Ground Clearance             | 490 mm   | 1.6 ft  |
| Track Length                 | 4860 mm  | 15.9 ft |
| Length to Center of Rollers  | 3990 mm  | 13.1 ft |
| Track Gauge                  | 2590 mm  | 8.5 ft  |
| Transport Width              | 3390 mm  | 11.1 ft |

## Working Ranges & Forces

|   |  |            |
|---|--|------------|
| Boom  | Reach 6.15 m (20'2")                           |            |
| Stick   | Reach 3.2 m (10'6")                            |            |
| Bucket  | HD 1.76 m <sup>3</sup> (2.30 yd <sup>3</sup> ) |            |
| Maximum Digging Depth                             | 7240 mm  | 23.9 ft    |
| Maximum Reach at Ground Level                     | 10 680 mm                                      | 35 ft      |
| Maximum Cutting Height                            | 10 030 mm                                      | 32.9 ft    |
| Maximum Loading Height                            | 6950 mm  | 22.8 ft    |
| Minimum Loading Height                            | 2300 mm  | 7.5 ft     |
| Maximum Depth Cut for 2440 mm (8 ft) Level Bottom | 7090 mm  | 23.3 ft    |
| Maximum Vertical Wall Digging Depth               | 6010 mm  | 19.7 ft    |
| Bucket Digging Force - ISO                        | 179 kN   | 40,200 lbf |
| Stick Digging Force - ISO                         | 126 kN   | 28,300 lbf |

## Air Conditioning System

The air conditioning system on this machine contains the fluorinated greenhouse gas refrigerant R134a (Global Warming Potential = 1430). The system contains 0.85 kg (1.9 lb) of refrigerant which has a CO<sub>2</sub> equivalent of 1.216 metric tonnes (1.340 tons).

# STANDARD & OPTIONAL EQUIPMENT

NOTE: Standard and optional equipment may vary. Consult your Cat dealer for details.

|   | Standard | Optional |
|---|----------|----------|
| <b>UNDERCARRIAGE AND STRUCTURES</b>   |          |          |
| Tie-down points on base frame   | ✓        |          |
| 6700 kg (14,770 lb) counterweight   | ✓        |          |
| 600 mm (24") triple grouser shoes   |          | ✓        |
| 600 mm (24") double grouser shoes   |          | ✓        |
| 600 mm (24") single grouser shoes   |          | ✓        |
| 700 mm (28") triple grouser shoes   |          | ✓        |
| 800 mm (31") triple grouser shoes   |          | ✓        |
| 900 mm (34") triple grouser shoes   |          | ✓        |
| <b>BOOMS AND STICKS</b>   |          |          |
| 5.55 m (18'2") Mass boom  |          | ✓        |
| 6.15 m (20'2") Reach boom   |          | ✓        |
| 6.5 m (21'3") Straight boom   |          | ✓        |
| 10.2 m (33'6") Super Long Reach boom  |          | ✓        |
| 3.0 m (10") + 3.3 m (10'10") Variable Angle boom  |          | ✓        |
| 2.5 m (8'2") Mass stick   |          | ✓        |
| 2.65 m (8'8") Reach stick   |          | ✓        |
| 3.2 m (10'6") Reach stick   |          | ✓        |
| 3.75 m (12'2") Reach stick  |          | ✓        |
| 7.85 m (25'9") Super Long Reach stick   |          | ✓        |
| <b>CAT TECHNOLOGY</b>   |          |          |
| VisionLink®   | ✓        |          |
| Remote Flash  | ✓        |          |
| Remote Troubleshoot   | ✓        |          |
| Work tool recognition and tracking (PL161)  | ✓        |          |
| Cat Grade with 2D   | ✓        |          |
| Cat Assist  | ✓        |          |
| Cat Payload   | ✓        |          |
| VisionLink Productivity   |          | ✓        |
| Operator Coaching   |          | ✓        |
| Cat Grade with 2D with Attachment Ready Option (ARO)                                      |          | ✓        |
| Cat Grade with 3D (single or dual GNSS)   |          | ✓        |
| Cat Grade 3D Ready  |          | ✓        |
| Cat Grade Connectivity  |          | ✓        |
| Cat Advanced Payload  |          | ✓        |
| Cat Tiltrotator (TRS) integration   |          | ✓        |
| <b>CAB</b>  |          |          |
| Rollover protective structure (ROPS)  | ✓        |          |
| Mechanical-suspension seat (Comfort only)   | ✓        |          |
| Heated air-suspension seat (Deluxe only)  | ✓        |          |
| Heated and ventilated air-suspension seat (Premium, Demolition only)                      | ✓        |          |
| High-resolution 203 mm (8 in) LCD touchscreen monitor (Comfort only)                      | ✓        |          |
| High-resolution 254 mm (10 in) LCD touchscreen monitor (Deluxe, Premium, Demolition only) | ✓        |          |
| Operator Protective Guards (OPG)  |          | ✓        |
| Cat Stick Steer   |          | ✓        |
| Auxiliary relay   |          | ✓        |

|   | Standard | Optional |
|---|----------|----------|
| <b>ENGINE</b>   |          |          |
| Cat C7.1 twin turbo diesel engine                               | ✓        |          |
| Three selectable power modes                                    | ✓        |          |
| Auto engine speed control                                       | ✓        |          |
| Auto engine idle shutdown                                       | ✓        |          |
| 50° C (122° F) high-ambient cooling capacity with de-rate       | ✓        |          |
| -18° C (-0° F) cold start capability                            | ✓        |          |
| Double element air filter with integrated pre-cleaner           | ✓        |          |
| Reversing electric cooling fans                                 | ✓        |          |
| -32° C (-25° F) cold start capability                           |          | ✓        |
| <b>SERVICE AND MAINTENANCE</b>                                  |          |          |
| S-O-S ports   | ✓        |          |
| Ground-level and platform-level engine oil dipsticks            | ✓        |          |
| Integrated vehicle health management system                     | ✓        |          |
| Electric refueling pump with auto shutoff                       |          | ✓        |
| <b>HYDRAULIC SYSTEM</b>   |          |          |
| Auto warm up  | ✓        |          |
| Auto two-speed travel   | ✓        |          |
| Auto Heavy Lift   | ✓        |          |
| Auto Dig Boost  | ✓        |          |
| Boom and stick drift reduction valve                            | ✓        |          |
| Boom and stick lowering check valves                            |          | ✓        |
| Hammer return filter circuit                                    |          | ✓        |
| Tool Control (two pump, one/two way high-pressure flow)         |          | ✓        |
| Medium-pressure circuit   |          | ✓        |
| Hydraulic efficiency monitoring                                 |          | ✓        |
| Quick coupler circuit   |          | ✓        |
| SmartBoom™ (Europe only)  |          | ✓        |
| <b>ELECTRICAL SYSTEM</b>  |          |          |
| Two 1,000 CCA maintenance free batteries                        | ✓        |          |
| Programmable time-delay LED working lights                      | ✓        |          |
| LED chassis light, left-hand/right-hand boom lights, cab lights | ✓        |          |
| <b>SAFETY AND SECURITY</b>                                      |          |          |
| 2D E-Fence  | ✓        |          |
| Auto hammer stop  | ✓        |          |
| Rearview camera   | ✓        |          |
| Right-side-view camera  | ✓        |          |
| Ground-level engine shutoff switch                              | ✓        |          |
| Lockable disconnect switch                                      | ✓        |          |
| Right-hand handrail and hand hold                               | ✓        |          |
| Signaling/warning horn  | ✓        |          |
| Cat Command (remote control)                                    |          | ✓        |
| 360° visibility   |          | ✓        |
| Swing alarm   |          | ✓        |
| Inspection lighting   |          | ✓        |

For more complete information on Cat products, dealer services and industry solutions, visit us on the web at [www.cat.com](http://www.cat.com).

© 2024 Caterpillar. All Rights Reserved.

VisionLink is a trademark of Caterpillar Inc., registered in the United States and in other countries.

Materials and specifications are subject to change without notice. Featured machines in photos may include additional equipment. See your Cat dealer for available options.

CAT, CATERPILLAR, LET'S DO THE WORK, their respective logos, SmartBoom, S·O·S, Product Link, "Caterpillar Corporate Yellow," the "Power Edge" and Cat "Modern Hex" trade dress as well as corporate and product identity used herein, are trademarks of Caterpillar and may not be used without permission. [www.cat.com](http://www.cat.com) [www.caterpillar.com](http://www.caterpillar.com)



AEXQ4338-00 (11-2024)  
Build Number: 07H  
(Aus-NZ, Chile, Colombia,  
Europe, Japan, N Am,  
Korea, Türkiye)

