

# STUMP GRINDERS

SKID STEER LOADERS  
COMPACT TRACK LOADERS  
COMPACT WHEEL LOADERS



## Models

**SG16** 216B3, 226B3, 226D3, 232D3, 236D3, 239D3, 242D3, 246D3, 249D3, 259D3, 262D3, 272D3, 279D3, 289D3, 299D3, 903, 906, 907, 908  
**SG36** 226D3, 232D3, 236D3, 239D3, 242D3, 246D3, 249D3, 250, 255, 259D3, 260, 262D3, 265, 270 XE, 272D3 XHP, 275 XE, 279D3, 285 XE, 289D3, 299D3 XHP

Machine model availability and attachment vary by region. Contact your local Cat® dealer for exact compatibility and availability.



Cat® Stump Grinders are designed to economically remove stumps in residential, commercial and agricultural settings. They offer increased production over tow-behind grinders in situations where multiple stump removal is required. The right balance of cutting wheel speed and torque makes quick work of most tree varieties.

## FEATURES



### DIRECT DRIVE SYSTEM

Direct drive system features a variable speed, unidirectional, gerotor style motor for optimal cutting wheel speed and high torque for efficient grinding performance.



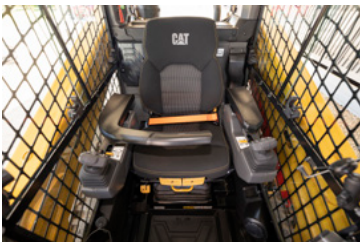
### HEAVY DUTY CUTTING WHEEL

Heavy duty cutting wheel and 32 bolt-on and replaceable carbide teeth provide maximum durability and cutting efficiency.



### ADJUSTABILITY – HEIGHT

Adjustable cutting wheel swing, extension and depth for superior operator control.



### HYDRAULIC CONTROLS

Swing and extension are controlled hydraulically from the cab using an electro-hydraulic valve for greater productivity and swing cycle time efficiency.



### DUAL HEIGHT PIVOTING STAND FEET

Heavy duty, dual height, pivoting stand feet provide a stable platform when grinding. Feet are adjustable to compensate for specific machine coupler-to-ground height and tire diameters.



### SERRATED STEP

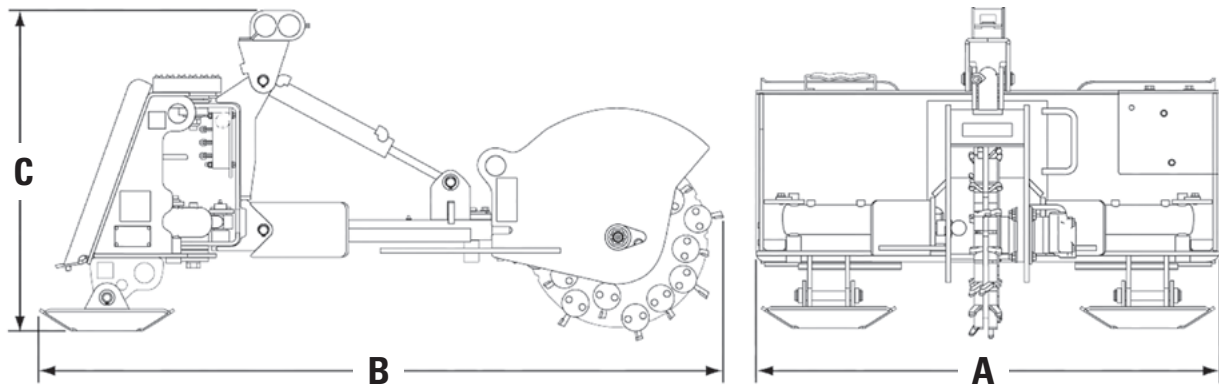
Wide step with grating and large profile serrations provides better traction and stability when entering and exiting machine.



### ADJUSTABILITY – EXTENSION

Extension of the cutting wheel allows for more work to be accomplished without needing to reposition the machine.

# SPECIFICATIONS



Stump Grinders		
Model	SG16	SG36
A Overall Width – mm (in)	1175 (46.3)	1175 (46.3)
B Overall Length – mm (in)	1737 (68.4)	1737 (68.4)
C Overall Height – mm (in)	730 (28.7)	813 (32)
Weight – kg (lb)	379 (835.6)	400 (881.8)
Cutting Head Speed @ Maximum Flow – rpm	993	1,230
Cutting Wheel Width – mm (in)	83 (3.3)	83 (3.3)
Cutting Wheel Diameter – mm (in)	547 (21.5)	547 (21.5)
Cutting Width (full swing range) – mm (in)	1524 (60)	1524 (60)
Cutting Head Swing Range	70°	70°
Cutting Height (above ground) – mm (in)	470 (18.5)	470 (18.5)
Cutting Depth (below ground) – mm (in)	521 (20.5)	521 (20.5)
Cutting Head Extension – mm (in)	280 (11)	280 (11)
Required Hydraulics	Standard Flow	High Flow XPS
Optimal Hydraulic Flow – L/min (gpm)	42-86 (11-23)	95-125 (25-33)
Optimal Hydraulic Pressure – bar (psi)	145-235 (2,100-3,400)	207-310 (3,000-4,500)
Interface	Skid Steer Coupler	Skid Steer Coupler



## STANDARD TWO-YEAR WARRANTY

All stump grinders come standard with a two-year warranty to give you peace of mind when purchasing a quality Cat Stump Grinder attachment.

For more complete information on Cat products, dealer services and industry solutions, visit us on the web at [www.cat.com](http://www.cat.com)

AEHQ8493 (11-2024)  
(Global)

© 2024 Caterpillar. All Rights Reserved.

Materials and specifications are subject to change without notice. Featured machines in photos may include additional equipment. See your Cat dealer for available options.

CAT, CATERPILLAR, LET'S DO THE WORK, their respective logos, "Caterpillar Corporate Yellow," the "Power Edge" and Cat "Modern Hex" trade dress as well as corporate and product identity used herein, are trademarks of Caterpillar and may not be used without permission.

[www.cat.com](http://www.cat.com) [www.caterpillar.com](http://www.caterpillar.com)

