

333

HYDRAULIC EXCAVATOR



Net Power – ISO 9249
Operating Weight
Maximum Digging Depth

193.8 kW (260 hp)
32 600 kg (71,800 lb)
7370 mm (24.2 ft)



333

HYDRAULIC EXCAVATOR

The Cat® 333 excavator gives you more digging force and increased bucket size, so you can tackle any job. A fuel-efficient hydraulic system and extended maintenance intervals help to keep your overall costs down. Reinforced structures and increased track width offer more stability and durability when working in tough applications.



LOW COST PER HOUR

Smart mode and the fuel efficient hydraulic system along with extended maintenance intervals help keep your overall costs down.

HIGH PRODUCTIVITY

Help improve digging output with increased bucket and stick forces, and maximize productivity with a larger bucket.

DESIGNED FOR TOUGH APPLICATIONS

Reinforced structures, increased durability with the oversized bucket linkage, and wide track gauge for better stability help you with tough jobs.

LATEST FEATURES



Cab Monitor Improvements

- Continuously improved user interface allows for intuitive navigation, minimizing performance interruption with the easy-to-use touchscreen menu.
- Smaller app tiles to view more apps in one screen.
- When navigating the menu, scroll position will be remembered.
- While menu is shown and lever is moved, camera view will be shown.
- Use the in-monitor QR code to learn about machine and technology features through a full suite of how-to videos.

Not all features are available in all regions. Please check with your local Cat dealer for specific offering availability in your area.
Build Number: 07H.

HIGH PERFORMANCE WITH LOWER FUEL CONSUMPTION

- The high fuel efficiency keeps you focused on the job and budget.
- The Cat C7.1 engine gives you powerful hydraulic power to work with different types of material.
- Large bucket capacity means fewer passes to move material faster.
- Get high productivity with increased bucket forces, stick forces, and a larger bucket compared to the 330.
- Match the excavator to the job with two power modes – Power and Smart. Smart mode automatically matches engine and hydraulic power to digging conditions, providing max power when needed and reducing power when it isn't to help save fuel.
- The high-efficiency hydraulic fan cools the engine on demand to help reduce fuel consumption; available reverse function makes it easy to keep cores clean.
- Self-sharpening Advansys™ bucket tips option increase production and lower costs.
- Auxiliary hydraulic options give you the versatility to use a wide range of Cat attachments.
- Don't let the temperature stop you from working. The excavator has a high-ambient capability of 50° C (122° F) and cold start capability of -18° C (0° F).



RELIABLE IN TOUGH CONDITIONS



- Reinforced booms, sticks, and linkage keep you moving from job to job. The reinforced frame makes the machine more durable and built to last.
- The increased track width* of +150 mm (6 in) gives you more critical stability to work with large buckets or on uneven surfaces while still being within transport width requirements.
- Automatic hydraulic oil warm up gets you to work faster in cold temperatures and helps prolong the life of components.
- Two levels of filtration protect the engine from diesel fuel.
- Grease sealed between track pins and bushings reduces travel noise and prevents debris from entering to increase undercarriage life.
- The sloped track frame prevents mud and debris accumulation, helping reduce risk of track damage.
- Work up to 4500 m (14,760 ft) above sea level with engine power derate above 3000 m (9,840 ft).

* Compared to the 330.

SIMPLE TO OPERATE

- Start the engine with the push-to-start button.
- Program each joystick button, including power mode, response, and pattern, using Operator ID; the machine will remember what you set each time you go to work.
- Make moving the excavator much easier with Cat Stick Steer. Simply push a button and use one hand to travel and turn instead of both hands or feet on levers or pedals.
- Not sure how a function works or how to maintain the excavator? Always have the operator's manual at your fingertips in the touchscreen monitor.
- Continuously improved user interface allows for intuitive navigation, minimizing performance interruption with the easy-to-use touchscreen menu.
- Use the in-monitor QR code to learn about machine and technology features through a full suite of "how-to" videos.



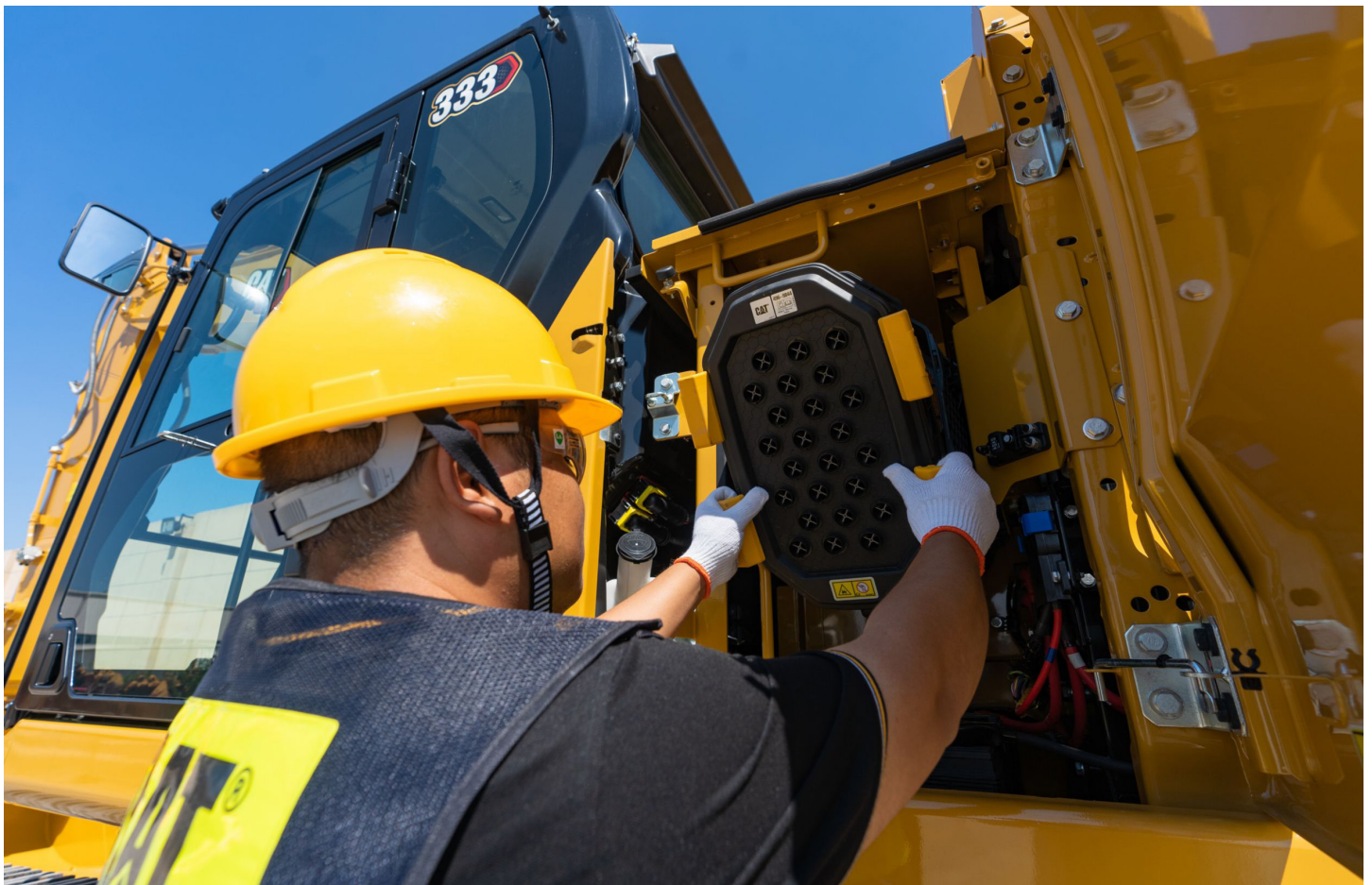
WORK COMFORTABLY IN CAB



- The comfort cab offers a mechanically adjustable seat suspension and an automatic heating/air conditioning system.
- Navigate quickly with the high-resolution 203 mm (8 in) touchscreen monitor to view machine information.
- Control the excavator comfortably with easy-to-reach controls all located in front of you.
- Stow your gear with plenty of in-cab storage beneath and behind the seat, overhead, and in the consoles.
- Use the standard radio's USB ports and Bluetooth® technology to connect personal devices and make hands-free calls.

EASY TO MAINTAIN

- Long life for fuel, oil and air filters keeps you out of the shop and working on the job longer.
- Oil and fuel filters are grouped together and located on the right-hand side of the machine for easy maintenance.
- The air intake filter with pre-cleaner has a high dust-holding capacity.
- Check the hydraulic system oil and easily drain fuel system water and fuel tank water from ground level.
- Track your excavator's filter life and maintenance intervals via the in-cab monitor. The optional engine oil sensor tracks your oil levels, which helps to speed up your daily maintenance routine.
- The hydraulic oil filter offers high-quality filtration performance, features anti-drain valves to keep the oil clean when the filter is replaced, and provides an extended 3,000-hour replacement interval for efficiency and convenience.
- The high-efficiency hydraulic fan has an optional automatic reverse function to keep cores free from debris, eliminating the need for any operator interaction.
- Boost productivity with proactive service reminders. The Integrated vehicle health management system alerts the operator with step-by-step service guidance along with parts needed so you don't experience any unnecessary downtime.
- Scheduled Oil Sampling (S-O-SSM) ports simplify maintenance and allow for quick, easy extraction of samples for fluid analysis.



SAFELY HOME EVERY DAY



- The Rollover Protective Structure (ROPS) cab meets ISO12117-2:2008 requirements.
- Enjoy great visibility into the trench, in each swing direction, and behind you with the help of smaller cab pillars, larger windows, and a flat engine hood design.
- A ground-level shutoff switch stops all fuel to the engine when activated and shuts down the machine.
- Add optional rear- and right-hand-side cameras for added visibility to your surroundings.
- Serrated steps and anti-skid punch plate on the service platform help prevent slipping.
- Enhance jobsite safety. Add a swing alarm to alert people when you're rotating from trench to stockpile and back again.

MORE THAN MACHINES

BUILT AROUND YOUR SUCCESS

When you buy Cat equipment, you get so much more than the machine. You also get the support of a world-class dealer network, backed by a range of flexible solutions, technology, tools, and more.



CUSTOMER VALUE AGREEMENTS

A Customer Value Agreement (CVA) from your Cat dealer helps you do more and worry less. A CVA simplifies machine ownership and maintenance, adds the security of expert dealer support, and gives you the peace of mind from effective equipment health management.

GENUINE CAT PARTS

Genuine Cat parts deliver the highest level of reliability and productivity. Order direct from your Cat dealer or shop online at parts.cat.com.

REPAIR OPTIONS

A broad range of repair options gives you choices that work with your needs, budget, and timeline. Every repair is performed by expert Cat technicians. You'll receive smart repair advice, a timely, accurate quote, and service that gets your machine back into action quickly.

FINANCIAL SERVICES

Count on Cat Financial to provide the best finance and extended protection solutions for your business. For more than 30 years, we have helped our customers succeed through financial service excellence.



DOZERS



SKID STEERS



MATERIAL HANDLERS



EXCAVATORS



WHEEL LOADERS



TRACK LOADERS

INCREASE PRODUCTIVITY AND VERSATILITY

WITH CAT ATTACHMENTS

You can easily expand the performance of your machine by utilizing any of the variety of Cat attachments. Each Cat attachment is designed to fit the weight and horsepower of Cat wheeled excavators for improved performance, safety, and stability.

BUCKETS



GRAPPLES



HYDRAULIC HAMMERS



PULVERIZERS



SHEARS



VIBRATORY PLATE COMPACTORS



MULTI-PROCESSORS



TECHNICAL SPECIFICATIONS

Engine

Net Power - ISO 9249	193.8 kW	260 hp
Net Power - ISO 9249 (DIN)	263 hp (metric)	
Engine Model	Cat C7.1	
Engine Power - ISO 14396	195 kW	261 hp
Engine Power - ISO 14396 (DIN)	265 hp (metric)	
Bore	105 mm	4 in
Stroke	135 mm	5 in
Displacement	7.01 L	428 in ³
Biodiesel Capability	Up to B20 ¹	
Emissions	Cat C7.1 engine emits equivalent to U.S. EPA Tier 3 and EU Stage IIIA.	

Net power advertised is the power available at the flywheel when the engine is equipped with fan, air intake system, exhaust system, and alternator with rated engine speed at 2,000 rpm. Advertised power is tested per the specified standard in effect at the time of manufacture.

¹Cat diesel engines are compatible with diesel fuel blended with the following lower-carbon intensity fuels** up to: 100% biodiesel FAME (fatty acid methyl ester)* or 100% renewable diesel, HVO (hydrotreated vegetable oil) and GTL (gas-to-liquid) fuels. Refer to guidelines for successful application. Please consult your Cat dealer or “Caterpillar Machine Fluids Recommendations” (SEBU6250) for details.

*For use of blends higher than 20% biodiesel, consult your Cat dealer.

**Tailpipe greenhouse gas emissions from lower-carbon intensity fuels are essentially the same as traditional fuels.

Hydraulic System

Main System - Maximum Flow	560 L/min (148 gal/min)	
Maximum Pressure - Equipment	35 000 kPa	5,075 psi
Maximum Pressure - Travel	35 000 kPa	5,075 psi
Maximum Pressure - Swing	29 800 kPa	4,321 psi

Swing Mechanism

Swing Speed*	11.5 r/min	
Maximum Swing Torque	111 kN-m	81,869 lbf-ft

*For CE-marked machine default value may be set lower.

Weights

Operating Weight	32 600 kg	71,800 lb
------------------	-----------	-----------

Long undercarriage, Heavy Duty (HD) Reach boom, HD R3.2 (10'6") stick, HD 2.0 m³ (2.62 yd³) bucket, 600 mm (24") triple grouser shoes and 7700 kg (16,980 lb) counterweight.

Service Refill Capacities

Fuel Tank Capacity	474 L	125.2 gal
Cooling System	25 L	6.6 gal
Engine Oil	25 L	6.6 gal
Swing Drive - Each	11.5 L	3 gal
Final Drive - Each	4.5 L	1.2 gal
Hydraulic System - Including Tank	310 L	81.9 gal
Hydraulic Tank	147 L	38.8 gal

Dimensions

Boom	HD Reach 6.15 m (20'2")	
Stick	HD Reach 3.2 m (10'6")	
Bucket	HD 2.0 m ³ (2.62 yd ³)	
Shipping Height - Top of Cab	3060 mm	10 ft
Handrail Height	3060 mm	10 ft
Shipping Length	10 450 mm	34.3 ft
Tail Swing Radius	3130 mm	10.3 ft
Counterweight Clearance	1120 mm	3.7 ft
Ground Clearance	480 mm	1.6 ft
Track Length	4860 mm	15.9 ft
Length to Center of Rollers	3990 mm	13.1 ft
Track Gauge	2740 mm	9 ft
Transport Width	3340 mm	11 ft

Working Ranges & Forces

Boom	HD Reach 6.15 m (20'2")	
Stick	HD Reach 3.2 m (10'6")	
Bucket	HD 2.0 m ³ (2.62 yd ³)	
Maximum Digging Depth	7370 mm	24.2 ft
Maximum Reach at Ground Level	10 680 mm	35 ft
Maximum Cutting Height	9660 mm	31.7 ft
Maximum Loading Height	6510 mm	21.4 ft
Minimum Loading Height	2170 mm	7.1 ft
Maximum Depth Cut for 2440 mm (8 ft) Level Bottom	7200 mm	23.6 ft
Maximum Vertical Wall Digging Depth	6420 mm	20.5 ft
Bucket Digging Force - ISO	197 kN	44,290 lbf
Stick Digging Force - ISO	147 kN	33,050 lbf

STANDARD & OPTIONAL EQUIPMENT

NOTE: Standard and optional equipment may vary. Consult your Cat dealer for details.

	Standard	Optional
UNDERCARRIAGE AND STRUCTURES		
Grease lubricated track link	✓	
7700 kg (16,980 lb) counterweight	✓	
600 mm (24") triple grouser track shoes		✓
600 mm (24") double grouser track shoes		✓
700 mm (28") triple grouser track shoes		✓
750 mm (30") triple grouser track shoes		✓
800 mm (31") triple grouser track shoes		✓
BOOMS AND STICKS		
6.15 m (20'2") HD Reach boom		✓
5.55 m (18'2") Mass boom		✓
10.2 m (33'6") Super Long Reach boom		✓
2.8 m (9'6") HD Reach stick		✓
3.2 m (10'6") HD Reach stick		✓
2.5 m (8'2") Mass stick (with rebar)		✓
7.85 m (25'9") Super Long Reach stick		✓
CAT TECHNOLOGY		
VisionLink®	✓	
Remote Flash	✓	
VisionLink Productivity		✓
CAB		
ROPS	✓	
High-resolution touchscreen monitor	✓	
Mechanically adjustable seat suspension	✓	
Operator Protective Guards (OPG)		✓
Cat Stick Steer		✓
ENGINE		
Cat C7.1 single turbo diesel engine	✓	
Power and Smart mode	✓	
Automatic engine speed control	✓	
Up to 4500 m (14,760 ft) altitude capability with engine power derate above 3000 m (9,840 ft)	✓	
50° C (122° F) high-ambient cooling	✓	
-18° C (0° F) cold start capability	✓	
Double element air filter with integrated pre-cleaner	✓	
Electric cooling fans with auto reverse function	✓	
-32° C (-25° F) cold start capability		✓

	Standard	Optional
ELECTRICAL SYSTEM		
Maintenance-free 1,000 CCA batteries	✓	
Centralized electrical disconnect switch	✓	
Programmable time-delay working lights	✓	
Chassis, boom, and cab lights	✓	
SERVICE AND MAINTENANCE		
Grouped location of engine oil and fuel filters	✓	
S-O-S ports	✓	
Integrated vehicle health management system	✓	
HYDRAULIC SYSTEM		
Boom and stick regeneration circuit	✓	
Electronic main control valve	✓	
Automatic hydraulic oil warm up	✓	
Automatic two-speed travel	✓	
SAFETY AND SECURITY		
Service platform with anti-skid plate and recessed bolts	✓	
Rearview camera	✓	
Lockable disconnect switch	✓	
Right-hand side mirror		✓
Right-hand side-view camera		✓
Travel alarm		✓
Swing alarm		✓

For more complete information on Cat products, dealer services and industry solutions, visit us on the web at www.cat.com.

© 2024 Caterpillar. All Rights Reserved.

Materials and specifications are subject to change without notice. Featured machines in photos may include additional equipment. See your Cat dealer for available options.

CAT, CATERPILLAR, LET'S DO THE WORK, their respective logos, SmartBoom, S-O-S, Product Link, "Caterpillar Corporate Yellow," the "Power Edge" and Cat "Modern Hex" trade dress as well as corporate and product identity used herein, are trademarks of Caterpillar and may not be used without permission. VisionLink is a trademark of Caterpillar Inc., registered in the United States and in other countries.
www.cat.com www.caterpillar.com

AEXQ3932-00 (11-2024)
Build Number: 07H
(Afr-ME, Eurasia, Indonesia, Pacific Islands,
S Am [except Brazil, Chile, Colombia],
SE Asia, Taiwan, Hong Kong)

