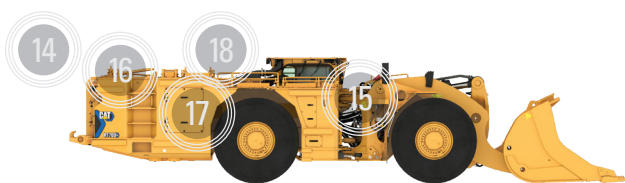


THE CAT® R1700 XE BATTERY ELECTRIC UNDERGROUND LOADER

**SUPERIOR
PRODUCTIVITY.
ZERO EXHAUST
EMISSIONS.**

1. Five bucket sizes available and full range of Cat® GET offerings to achieve best productivity while maximizing bucket life
2. Front linkage geometry the same as the R1700 for strong breakout force
3. Aggressive hydraulic performance for improved loading times; common implement control and load sensing pumps with controllable flow
4. Multi-layered electrical safety systems, designed to withstand the rigors of underground mining environments
5. No high voltage cabling across the hitch for improved safety
6. Standard enclosed ROPS/FOPS cabin with ergonomic layout, Operator Present System and interior and exterior safety details
7. Product Link™ Elite (PLE) system for machine health monitoring; technology-ready for Cat MineStar™ for underground
8. Autodig function to optimize loading and traction control to maximize tire life
9. 100% battery electric propulsion, zero exhaust emissions and significantly less heat generation
10. Utilizes existing, proven electric drive components, inclusive of motor and inverters from various Cat product lines and leveraging the output gearing from the R1700
11. Tried and tested thermally stable Lithium Iron Phosphate battery system
12. Maintenance-free FOPS Level 2 tested integrated battery boxes; parallel battery boxes for safe operation
13. Batteries that stay on the machine, which maximizes available runtime and reduces capital expenditure and operating cost
14. Achieves full charge in less than 20 minutes with two MEC500 chargers in parallel; full charge in less than 30 minutes with a single MEC500
15. Strong commonality with the R1700 and fewer moving parts for reduced maintenance and parts inventory requirements
16. Smaller cooling package space and new chilling cores for battery cooling
17. Easily accessible ground-level service station
18. Flat-fold handrails



THE CAT® R1700 XE BATTERY ELECTRIC UNDERGROUND LOADER



15 000 kg / 33,069 lb
RATED PAYLOAD

24 190 kg / 53,330 lb
BREAKOUT FORCE
(LIFT AND TILT)

FULL CHARGE IN
LESS THAN 30 MINUTES
or in 20 min
using dual MEC500 chargers



PRIORITY ON PRODUCTION

- » Class-leading productivity with performance that matches the proven R1700.
- » 15-tonne (33,069-pound) truck loading and tramming capability and software-controlled maximum speed, tailored to the needs of the application, to optimize battery life and run time.
- » Powertrain carryover features such as traction control, proportional braking, axles, shaft, final drives, dropbox (same gears) to improve component durability and reliability and reduce overall operating cost, while maximizing availability and productivity.



POWER BATTERIES AND ONBOARD FAST CHARGING

- » Tried and tested thermally stable Lithium Iron Phosphate battery system for fast charging, high performance and improved safety.
- » Caterpillar engineered cooling system to maximize performance and cell life.
- » Monitoring while charging, battery cooling while charging and opportunity charging; each full charge targets 2 1/2 hours of aggressive runtime.

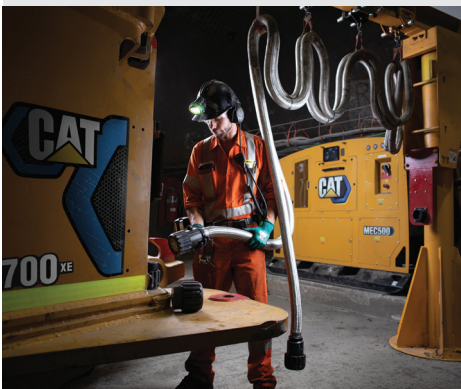


DURABILITY AND SERVICEABILITY

- » Strong commonality with the R1700, enabling an upgrade path for the future.
- » Electrical connectors are sealed to lock out dust and moisture, harnesses are covered for protection, and wires are color- and number-coded for easy diagnosis and repair.
- » Durable and reliable Cat hoses throughout machine.
- » Cat Electronic Technician (Cat ET) service tool, which enables quick electronic diagnosis of machine performance and key diagnostic data for effective maintenance and repairs.

SAFETY

- » Fire suppression system available to prevent oil fire cascading into adjacent systems, and fire suppression activation from within the cab.
- » Operator Presence system using machine sensors, including the door sensor.
- » Door and seat belt monitoring systems available.
- » Tire pressure monitoring system available.
- » All new HVAC coverage with improved airflow, greater defrosting coverage and reduced noise levels.
- » Neutral creep inhibitor; machine has neutral coast and neutral creep safety features.
- » Dual secondary emergency exits.



AEXQ4044

© 2024 Caterpillar. All Rights Reserved. CAT, CATERPILLAR, LET'S DO THE WORK, their respective logos, "Caterpillar Corporate Yellow", the "Power Edge" and Cat "Modern Hex" trade dress as well as corporate and product identity used herein, are trademarks of Caterpillar and may not be used without permission.