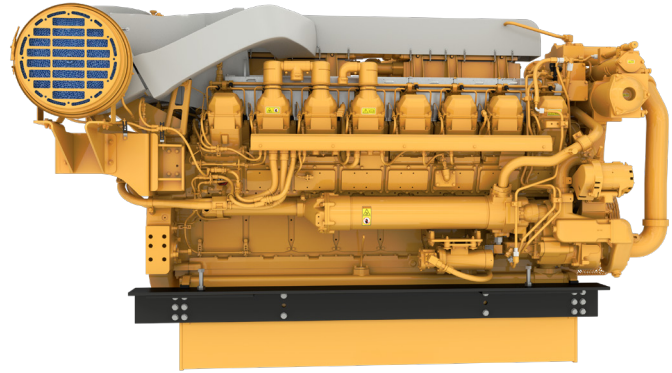
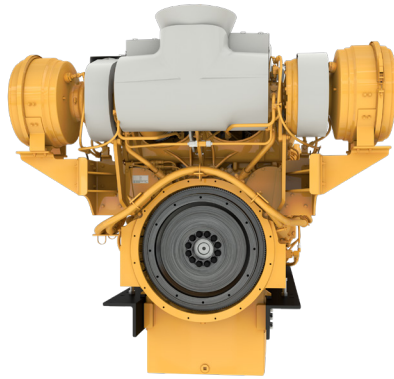


3516C IMO II Marine Propulsion Engine Commercial Applications



ENGINE SPECIFICATIONS

CONFIGURATION	V-16, 4-Stroke Cycle diesel
EMISSIONS	IMO II
RATED ENGINE SPEED	1200 / 1600 / 1800
DISPLACEMENT	Standard: 69 L / 4211 in ³ High Displacement: 78 L / 4765 in ³
ASPIRATION	Twin Turbocharged – Aftercooled
GOVERNOR	Electronic (ADEM6)
FLYWHEEL HOUSING	Flywheel housing, SAE No. 00

BORE X STROKE	Standard: 170 mm x 190 mm / 6.69 in x 7.48 in High Displacement: 170 mm x 215 mm / 6.69 in x 8.46 in
REFILL CAPACITY LUBE OIL SYSTEM W/OIL FILTER CHANGE	204 L (53 gal) / 807 L (213 gal)
OIL CHANGE INTERVAL	Options for 250 / 1000 hrs
ROTATION (FROM FLYWHEEL END)	Clockwise or Counterclockwise
COOLING	Heat Exchanger or Keel Cooled

KEY FEATURES & BENEFITS

- Electronic control monitors engine operation and helps to minimize fuel consumption
- Dual ECMs provide redundant control for uninterrupted operation avoiding single point failure
- Instrument panel with cold mode start strategy and programmable low idle
- Mandatory control panel and optional MCS compliant alarm & protection system
- Electronic controllers are MCS (IACS E10) and cyber security (IEC 62443 - Level 1) compliant
- Meticulous configuration and cylinder geometry design helps improve combustion characteristics
- Exact control of fuel injection and piston design improve efficiency and reduce emissions
- Precise nozzle geometry and electronic injection control for improved fuel delivery

STANDARD EQUIPMENT

- Dual engine controller modules
- Corrosion-resistant aftercooler core
- Dual turbochargers with water-cooled bearings and heat shields
- Centrifugal auxiliary water pump
- Electronic unit injectors
- Vibration damper and guard
- Gear-driven centrifugal jacket water pump
- Oil filter, oil level gauge, and oil pump
- CW or CCW Rotation, LH or RH Service

OPTIONAL ATTACHMENTS

- Plate-type heat exchanger
- Special appearance package with chrome cover available
- Marine Class Society certifications
- Power takeoff
- Shutoff and alarm contactors
- SOLAS compliant fuel connections with spill shield
- LECP-CMG, LECP II and LECP III instrument panel options
- Mounting rails
- Sea water pump
- See Marine Price List for additional attachments

RATINGS & FUEL CONSUMPTION

IMO II

RPM	Rating	mhp	bhp	bkW	U.S. gal/hr	g/bkWh	IMO	U.S. EPA	EU	China
1600	A	2028	2000	1492	92.2	198.9	II	NC	NC	NC
	A ¹	2292	2260	1685	104.1	198.6	II	NC	NC	NC
		2482	2448	1825	111.2	196.1	II	NC	NC	NC
	B	2130	2100	1566	96.3	198.0	II	NC	NC	NC
	B ¹	2407	2375	1771	108.4	196.9	II	NC	NC	NC
		2611	2575	1920	116.3	194.9	II	NC	NC	NC
	C	2231	2200	1640	101.0	198.1	II	NC	NC	NC
	C ¹	2534	2500	1864	113.3	195.5	II	NC	NC	NC
		2720	2682	2000	121.0	194.7	II	NC	NC	NC
D ¹	2855	2816	2100	127.4	195.2	II	NC	NC	NC	
1800	B ¹	3046	3005	2240	143.6	206.3	II	NC	NC	NC
	C ¹	3196	3150	2350	149.9	205.3	II	NC	NC	NC
	D ¹	3434	3385	2525	159.9	203.7	II	NC	NC	NC

All engines available in Standard and Reverse Rotation
¹ denotes High Displacement Engine

Rating Definitions:

A Rating (Unrestricted Continuous)

Typical applications: For vessels operating at rated load and rated speed up to 100% of the time without interruption or load cycling (80% to 100% load factor). Typical operation ranges from 5000 to 8000 hours per year.

B Rating (Heavy Duty)

Typical applications: For vessels operating at rated load and rated speed up to 80% of the time with some load cycling (40% to 80% load factor). Typical operation ranges from 3000 to 5000 hours per year.

C Rating (Maximum Continuous)

Typical applications: For vessels operating at rated load and rated speed up to 50% of the time with cyclical load and speed (20% to 80% load factor). Typical operation ranges from 2000 to 4000 hours per year.

D Rating (Intermittent Duty)

Typical applications: For vessels operating at rated load and rated speed up to 16% of the time (up to 50% load factor). Typical operating ranges from 1000 to 3000 hours per year.

ENGINE DIMENSIONS & WEIGHT

LENGTH (APPROX.) 148.0 in / 3761 mm

HEIGHT (APPROX.) 84.6 in / 2150 mm

WIDTH (APPROX.) 84.3 in / 2142 mm

DRY WEIGHT (APPROX.) 17,550 lb / 7961 kg

