



# D6

## Track-Type Tractors

# Technical Specifications

Configurations and features may vary by region. Please consult your Cat® dealer for availability in your area.

### Table of Contents

#### D6 Track-Type Tractor

<b>Specifications</b> .....	<b>3</b>	D6 Variable Pitch Power Angle Tilt (VPAT) .....	8
Engine .....	3	Blade .....	8
Fluid/Refill Capacities .....	3	D6 LGP VPAT (30 in) .....	9
Maximum Drawbar Power .....	3	Blade .....	9
Transmission .....	3	D6 LGP VPAT (36 in) .....	10
Drawbar Pull .....	3	Blade .....	10
Hydraulic Controls – Maximum Operating Flows .....	4	Ripper .....	11
Hydraulic Controls – Maximum Operating Pressures .....	4	Winches .....	12
Air Conditioning System .....	5	Track Shoes .....	13
Advanced Cabin Filtration .....	5	Dozer Technology Features .....	14
Standards .....	5	<b>Standard and Optional Equipment</b> .....	<b>15</b>
D6 .....	6	<b>Environmental Declaration</b> .....	<b>18</b>
Blades .....	6		
D6 Low Ground Pressure (LGP) (36 in) .....	7		
Blades .....	7		

*(continued on next page)*

# D6 Track-Type Tractors Table of Contents

## Table of Contents *(continued)*

### D6 Track-Type Tractor – Waste Handler Configuration

<b>Key Features and Benefits</b> .....	<b>19</b>	Air Conditioning System.....	23
<b>D6 Waste Handler Features</b> .....	<b>20</b>	Advanced Cabin Filtration.....	23
<b>Specifications</b> .....	<b>21</b>	Standards.....	23
Engine .....	21	D6 LGP (36 in) Waste Handler Dimensions.....	24
Fluid/Refill Capacities.....	21	Blade.....	24
Maximum Drawbar Power .....	21	Waste Handler Features .....	25
Transmission .....	21	Ripper .....	26
Drawbar Pull .....	21	Winches.....	27
Hydraulic Controls – Maximum Operating Flows .....	22	Track Shoes.....	28
Hydraulic Controls – Maximum Operating Pressures .....	22	<b>Standard and Optional Equipment</b> .....	<b>29</b>

### D6 Track-Type Tractor – Heavy Duty/Forestry Configuration

<b>Key Features and Benefits</b> .....	<b>32</b>	D6 Heavy Duty/Forestry Dimensions.....	36
<b>D6 Heavy Duty/Forestry Features</b> .....	<b>33</b>	Blades.....	36
<b>Specifications</b> .....	<b>34</b>	D6 Heavy Duty/Forestry LGP VPAT (30 in) Dimensions.....	37
Engine .....	34	Blade.....	37
Fluid/Refill Capacities.....	34	Ripper .....	38
Maximum Drawbar Power .....	34	Winches.....	39
Drawbar Pull .....	34	Track Shoes.....	40
Hydraulic Controls – Maximum Operating Flows .....	35	Air Conditioning System.....	41
Hydraulic Controls – Maximum Operating Pressures .....	35	Advanced Cabin Filtration.....	41
		Standards.....	41
		<b>Standard and Optional Equipment</b> .....	<b>42</b>

# D6 Track-Type Tractors Specifications

## Engine

Engine Model	Cat® C9.3B	
Emissions	Brazil MAR-1 and UN ECE R96 Stage IIIA emission standards, equivalent to U.S. EPA Tier 3/EU Stage IIIA	
Net Power – 2,200 rpm		
ISO 9249/SAE J1349	161 kW	215 hp
ISO 9249 (DIN)	219 mhp	
Engine Power – 1,200 rpm		
ISO 14396	187 kW	251 hp
ISO 14396 (DIN)	254 mhp	
Gross Power: SAE J1995:2014	190 kW	255 hp
Bore	115 mm	4.5 in
Stroke	149 mm	5.9 in
Displacement	9.3 L	567 in <sup>3</sup>

- The Cat C9.3B engine features a high pressure common rail fuel system, simplified engine system electronics, and simplified air system through the removal of the previously used exhaust gas recirculation (EGR) system.
- Net power advertised is the power available at the engine flywheel when the engine is equipped with a fan, air cleaner, clean emissions module and alternator.
- Advertised power is tested per the specified standard in effect at the time of manufacture.
- No derating required up to 2286 m (7,500 ft). Above this, automatic derating occurs.
- Cat engines are compatible with diesel fuel blended with the following lower-carbon intensity fuels\*\* up to:
  - ✓ 20% biodiesel FAME (fatty acid methyl ester)\*
  - ✓ 100% renewable diesel, HVO (hydrogenated vegetable oil) and GTL (gas-to-liquid) fuels

Refer to guidelines for successful application. Please consult your Cat dealer or “Caterpillar Machine Fluids Recommendations” (SEBU6250) for details.

\*For use of blends higher than 20% biodiesel, consult your Cat dealer.

\*\*Tailpipe greenhouse gas emissions from lower-carbon intensity fuels are essentially the same as traditional fuels.

## Fluid/Refill Capacities

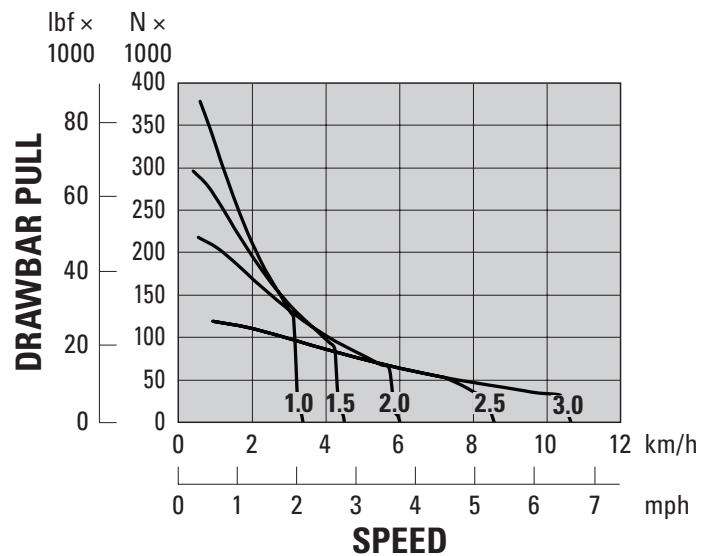
Fuel Tank	341 L	90 gal
Cooling System	63 L	16.6 gal
Engine Crankcase	24.5 L	6.5 gal
Power Train Oil	148 L	39.1 gal
Final Drives (each)	18.2 L	4.8 gal
Roller Frames (each)	65-85 L	17.2-22.5 gal
Pivot Shaft Compartment	2.8 L	0.74 gal
Hydraulic Tank Oil	60 L	15.8 gal
Hydraulic System	77 L	20.3 gal

## Transmission

1.0 Forward	3.3 kph	2.1 mph
1.5 Forward	4.5 kph	2.8 mph
2.0 Forward	6.0 kph	3.7 mph
2.5 Forward	8.5 kph	5.3 mph
3.0 Forward	10.7 kph	6.6 mph
1.0 Reverse	3.1 kph	1.9 mph
1.5 Reverse	4.0 kph	2.5 mph
2.0 Reverse	5.8 kph	3.6 mph
2.5 Reverse	8.0 kph	5.0 mph
3.0 Reverse	10.7 kph	6.7 mph

## Drawbar Pull

1.0 Forward	422 kN	94,869 lbf
1.5 Forward	311 kN	69,916 lbf
2.0 Forward	230 kN	51,706 lbf
2.5 Forward	126 kN	28,326 lbf
3.0 Forward	126 kN	28,326 lbf



**NOTE:** Usable pull will depend on traction and weight of machine.

# D6 Track-Type Tractors Specifications

## Hydraulic Controls – Maximum Operating Flows

	1,750 rpm engine speed*	
Implement Pump Maximum Flow	204 L/min	54 gal/min
Steering Pump Maximum Flow	192 L/min	51 gal/min
Fan Pump Flow at Maximum Fan (1,625 rpm)	41 L/min	11 gal/min

\*Engine speed varies with load and travel speed. A high idle/low working load speed shown.

## Hydraulic Controls – Maximum Operating Pressures

Implement Relief*	27 600 ± 500 kPa	4,000 ± 73 psi
Steering – 90 cc pump		
Electronic Relief	42 500 ± 1000 kPa	6,168 ± 145 psi
System Maximum Relief	48 000 ± 1000 kPa	6,962 ± 145 psi

\*Implement relief pressure increased over prior model D6 tractors. Consult with your dealer prior to using older vintage or third party implements.

## Air Conditioning System

The air conditioning system on this machine contains the fluorinated greenhouse gas refrigerant R134a (Global Warming Potential = 1430). The system contains 1.36 kg (2.99 lb) of refrigerant which has a CO<sub>2</sub> equivalent of 1.946 metric tonnes (2.145 tons).

## Advanced Cabin Filtration

### Operator Cabin

- Distributed HVAC ducting with automatic temperature control and blower speed provides ultimate operator comfort with less user input.
- Reduced maintenance of the condenser core with automatic reversing fans.
- Cat Advanced Cabin Filtration is standard.

### Cat Advanced Cabin Filtration

- Operator protection from respirable particulate (0.3-10 micron size).
- Sustainably pressurized cab (US Silica compliant).
- Reduced maintenance with longer life, high efficiency filters.
- Protection for all cabin components: electronics, etc.
- Helps meet U.S. Occupational Safety and Health Administration Silica Rule Table 1 requirements for operator cabs.
- Multi-tiered filter offerings for optional efficiency upgrades. Contact Cat dealer for availability.
  - MERV 16 – Standard Equipment
  - HEPA
  - Activated Carbon + HEPA
  - ABEK1 + HEPA

## Standards

### Rollover Protective Structure (ROPS)/ Falling Object Protective Structure (FOPS)

- ROPS meets the following criteria: ISO 3471:2008.
- FOPS meets the following criteria: ISO 3449:2005 Level II.

### Brakes

- Brakes meet the standard ISO 10265:2008.

### Sound Level Information

Hearing protection may be needed when the machine is operated with an open operator station, in a noisy environment, with a cab that is not properly maintained, or when the doors and windows are open for extended periods of time.

Sound Level		Test Method
Operator Sound Pressure Level	78 dB(A)*	“ISO 6396:2008” <sup>(1)</sup>
Exterior Sound Power Level	113 dB(A)	“ISO 6395:2008” <sup>(2)</sup>
	111 dB(A)*	“ISO 6395:1988” <sup>(2)</sup>

\*Including machines required to meet applicable regional regulations of Ukraine, United Kingdom, and Countries that Adopt the “EU Directives”; or machines equipped with the sound-suppression package.

<sup>(1)</sup>The measurement was conducted at 70% of the maximum engine cooling fan speed. The sound level may vary at different engine cooling fan speeds. The measurement was conducted with the cab doors and the cab windows closed. The cab was properly installed and maintained.

<sup>(2)</sup>The measurement was conducted at 70% of the maximum engine cooling fan speed. The sound level may vary at different engine cooling fan speeds.

The sound levels listed above include both measurement uncertainty and uncertainty due to production variation.

# D6 Track-Type Tractors Specifications

## D6 Dimensions

Operating Weight <sup>1</sup>	22 130 kg	48,788 lb
Shipping Weight <sup>2</sup>	19 178 kg	42,280 lb
Ground Pressure (ISO 16754)	54 kPa	7.9 psi
Undercarriage (Standard)	42 Section with 8 Bottom Rollers	
<b>1</b> Track Gauge	1.930 m	6'4"
<b>2</b> Width of Maximum Track Shoe	0.610 m	24 in
<b>3</b> Width over Tracks	2.540 m	8'4"
Width over Trunnions	2.692 m	8'10"
<b>4</b> Length of Track on Ground	2.964 m	9'8"
Ground Contact Area (ISO 16754)	3.992 m <sup>2</sup>	42.97 ft <sup>2</sup>
Track Pitch	0.2028 m	7.9 in
Grouser Height (Moderate Service)	0.065 m	2.6 in
Ground Clearance	0.361 m	14.2 in
Oscillation at Front Idler	0.103 m	4.0 in
<b>5</b> Machine Height <sup>3</sup>	3.188 m	10'6"
<b>6</b> Length of Machine without Blade	4.730 m	15'6"
Add the following to the total length of the machine when these attachments are installed:		
Winch	441 mm	17.4 in
Ripper	1179 mm	46.4 in
Drawbar or Counterweight <sup>4</sup>	249 m	18.8 in
Striker Box	478 mm	18.8 in

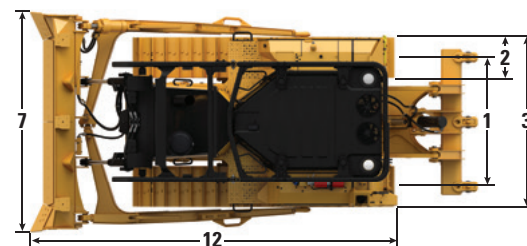
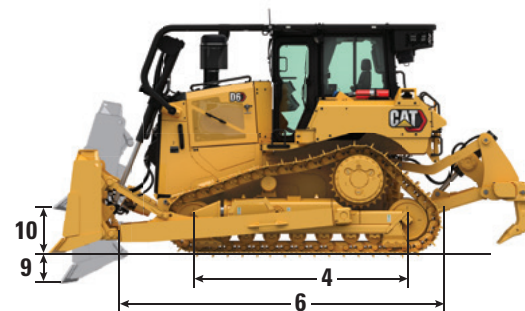
All dimensions above with Heavy Duty Extended Life (HDXL) undercarriage with Moderate Service shoes of maximum width for configuration, 6 Semi-Universal (SU) blade, and calculated per ISO 16754 unless otherwise specified.

<sup>1</sup>Operating weight includes blade, lubricants, coolant, full fuel tank, ROPS/FOPS cab, drawbar, and 75 kg (165 lb) operator.

<sup>2</sup>Shipping weight includes blade lift cylinders, lubricants, coolant, 10% fuel, ROPS/FOPS cab, and drawbar.

<sup>3</sup>Machine height from tip of grouser to top of Product Link™ Antenna. For Sweeps, add 60 mm (2.36 in) to overall machine height. For forestry sweeps, add 83 mm (3.26 in). With Extreme Service Track Shoes add 12 mm (0.5 in). When Cat Grade with 3D antennas are installed there is no addition to machine height.

<sup>4</sup>Drawbar weight 119 kg (262 lb), 331 kg (730 lb) for each counterweight slab. Counterweights are only recommended with heavier aftermarket blades.



*NOTE: Standard SU model with optional sweeps shown.*

## Blades

Configuration	6 SU		6A	
Capacity (ISO 9246)	5.7 m <sup>3</sup>	7.5 yd <sup>3</sup>	4.2 m <sup>3</sup>	5.5 yd <sup>3</sup>
<b>7</b> Width across End Bits	3.312 m	10.87 ft	4.389 m	14.40 ft
Width without End Bits	3.246 m	10.65 ft	4.250 m	13.94 ft
Width across End Bits (Blade Angled)	—	—	3.982 m	13.06 ft
Width without End Bits (Blade Angled)	—	—	3.858 m	12.66 ft
Maximum Blade Angle	—	—	—	25°
<b>8</b> Height	1.408 m	4.62 ft	1.150 m	3.77 ft
<b>9</b> Dig Depth	0.502 m	19.8 in	0.595 m	23.4 in
<b>10</b> Lift Height	1.180 m	46.5 in	1.084 m	42.7 in
<b>11</b> Maximum Tilt at Blade Corner	0.564 m	22.2 in	0.599 m	23.6 in
Maximum Tilt Angle	—	9.8°	—	7.8°
Pitch Adjustment	—	±4.2°	—	—
<b>12</b> Length of Machine (Blade Straight)	5.436 m	17.83 ft	5.377 m	17.64 ft
Length of Machine (Blade Angled)	—	—	6.418 m	21.06 ft
Weight (Blade)	1385 kg	3,053 lb	1265 kg	2,789 lb
Weight (Blade and Push Arms)	2620 kg	5,777 lb	3406 kg	7,509 lb

Cat FirstCut™ cutting edges are available for Semi-Universal (SU) blades. FirstCut edges provide superior penetration in tough compacted, rocky or frozen soils resulting in improved payloads and productivity. Consult with your Cat dealer for more benefits and details.

# D6 Track-Type Tractors Specifications

## D6 LGP (36 in) Dimensions

Operating Weight <sup>1</sup>	23 911 kg	52,715 lb
Shipping Weight <sup>2</sup>	21 165 kg	46,660 lb
Ground Pressure (ISO 16754)	36 kPa	5.2 psi
Undercarriage (Standard)	45 Section with 8 Bottom Rollers	
Undercarriage (Optional)	45 Section with 10 Bottom Rollers	
<b>1</b> Track Gauge	2.286 m	7'6"
<b>2</b> Width of Maximum Track Shoe	0.915 m	36 in
<b>3</b> Width over Tracks	3.200 m	10'6"
Width over Trunnions	3.491 m	11'6"
<b>4</b> Length of Track on Ground	3.247 m	10'8"
Ground Contact Area (ISO 16754)	6.505 m <sup>2</sup>	70.02 ft <sup>2</sup>
Track Pitch	0.2028 m	7.9 in
Grouser Height (Moderate Service)	0.065 m	2.6 in
Ground Clearance	0.395 m	15.6 in
Oscillation at Front Idler	0.116 m	4.6 in
<b>5</b> Machine Height <sup>3</sup>	3.238 m	10'7"
<b>6</b> Length of Machine without Blade	5.040 m	16'6"
Add the following to the total length of the machine when these attachments are installed:		
Winch	441 mm	17.4 in
Ripper	1179 mm	46.4 in
Drawbar or Counterweight <sup>4</sup>	249 mm	9.8 in
Striker Box	478 mm	18.8 in

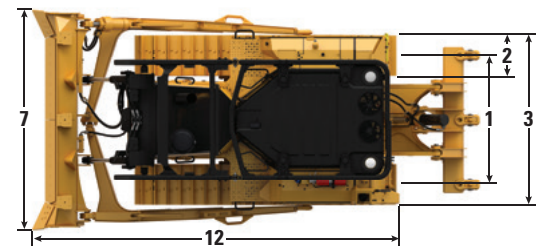
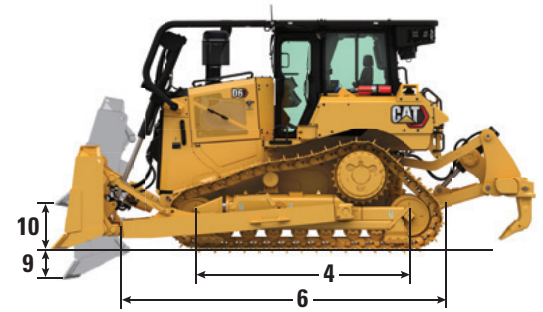
All dimensions above with HDXL undercarriage with Moderate Service shoes of maximum width for configuration, 6 S blade, and calculated per ISO 16754 unless otherwise specified.

<sup>1</sup>Operating weight includes blade, lubricants, coolant, full fuel tank, ROPS/FOPS cab, drawbar, and 75 kg (165 lb) operator.

<sup>2</sup>Shipping weight includes blade lift cylinders, lubricants, coolant, 10% fuel, ROPS/FOPS cab, and drawbar.

<sup>3</sup>Machine height from tip of grouser to top of Product Link Antenna. For Sweeps, add 60 mm (2.36 in) to overall machine height. For forestry sweeps, add 83 mm (3.26 in). With Extreme Service Track Shoes add 12 mm (0.5 in). When Cat Grade with 3D antennas are installed there is no addition to machine height.

<sup>4</sup>Drawbar weight 119 kg (262 lb), 331 kg (730 lb) for each counterweight slab. Counterweights are only recommended with heavier aftermarket blades.



NOTE: Standard SU model with optional sweeps shown for reference.

## Blades

Configuration	6 S LGP (36 in)		6A LGP (36 in)	
	m <sup>3</sup>	yd <sup>3</sup>	m <sup>3</sup>	yd <sup>3</sup>
Capacity (ISO 9246)	3.8	5.0	5.0	6.5
<b>7</b> Width across End Bits	4.063 m	13.33 ft	5.100 m	16.73 ft
Width without End Bits	3.917 m	12.85 ft	4.961 m	16.28 ft
Width across End Bits (Blade Angled)	—	—	4.626 m	15.18 ft
Width without End Bits (Blade Angled)	—	—	4.502 m	14.77 ft
Maximum Blade Angle	—	—	—	25°
<b>8</b> Height	1.108 m	3.64 ft	1.150 m	3.77 ft
<b>9</b> Dig Depth	0.600 m	1.97 ft	0.719 m	28.3 in
<b>10</b> Lift Height	1.080 m	3.54 ft	1.173 m	46.2 in
<b>11</b> Maximum Tilt at Blade Corner	0.500 m	1.64 ft	0.689 m	27.1 in
Maximum Tilt Angle	8.8°		7.8°	
Pitch Adjustment	±4.2°		—	
<b>12</b> Length of Machine (Blade Straight)	5.483 m	17.99 ft	5.960 m	19.55 ft
Length of Machine (Blade Angled)	—	—	6.996 m	22.95 ft
Weight (Blade)	1232 kg	2,717 lb	1465 kg	3,230 lb
Weight (Blade and Push Arms)	2383 kg	5,255 lb	3630 kg	8,004 lb

# D6 Track-Type Tractors Specifications

## D6 VPAT Dimensions

Operating Weight <sup>1</sup>	22 275 kg	49,108 lb
Shipping Weight <sup>2</sup>	20 513 kg	45,223 lb
Ground Pressure (ISO 16754)	49 kPa	7.1 psi
Undercarriage (Standard)	45 Section with 8 Bottom Rollers	
<b>1</b> Track Gauge	2.080 m	6'10"
<b>2</b> Width of Maximum Track Shoe	0.610 m	24 in
<b>3</b> Width over Tracks	2.690 m	8'10"
<b>4</b> Length of Track on Ground	3.247 m	10'8"
Ground Contact Area (ISO 16754)	4.473 m <sup>2</sup>	48.15 ft <sup>2</sup>
Track Pitch	0.2028 m	7.9 in
Grouser Height (Moderate Service)	0.065 m	2.6 in
Ground Clearance	0.422 m	16.6 in
Oscillation at Front Idler	0.112 m	4.4 in
<b>5</b> Machine Height <sup>3</sup>	3.188 m	10'6"
<b>6</b> Length of Machine without Blade	5.134 m	16'10"
Add the following to the total length of the machine when these attachments are installed:		
Winch	416 mm	16.4 in
Ripper	1154 mm	45.4 in
Drawbar or Counterweight <sup>4</sup>	224 mm	8.8 in
Striker Box	453 mm	17.8 in

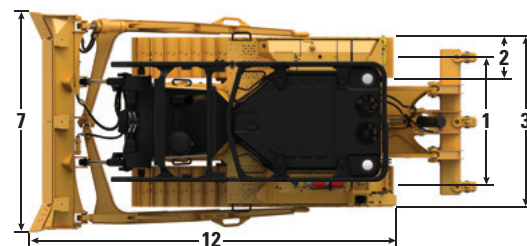
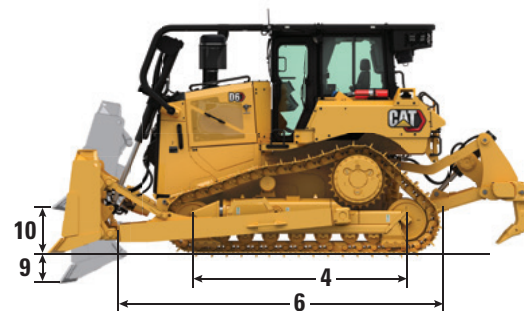
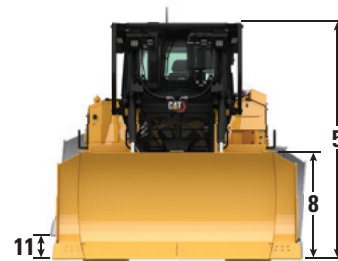
All dimensions above with HDXL undercarriage with Moderate Service shoes of maximum width for configuration, VPAT blade, and calculated per ISO 16754 unless otherwise specified.

<sup>1</sup>Operating weight includes blade, lubricants, coolant, full fuel tank, ROPS/FOPS cab, drawbar, and 75 kg (165 lb) operator.

<sup>2</sup>Shipping weight includes blade lift cylinders, C-frame, lubricants, coolant, 10% fuel, ROPS/FOPS cab, and drawbar.

<sup>3</sup>Machine height from tip of grouser to top of Product Link Antenna. For Sweeps, add 60 mm (2.36 in) to overall machine height. For forestry sweeps, add 83 mm (3.26 in). With Extreme Service Track Shoes add 12 mm (0.5 in). When Cat Grade with 3D antennas are installed there is no addition to machine height.

<sup>4</sup>Drawbar weight 119 kg (262 lb), 331 kg (730 lb) for each counterweight slab. Counterweights are only recommended with heavier aftermarket blades.



*NOTE: Standard SU model with optional sweeps shown for reference.*

## Blade

Configuration	6 VPAT	
Capacity (ISO 9246)	4.1 m <sup>3</sup>	5.4 yd <sup>3</sup>
<b>7</b> Width across End Bits	3.680 m	12.07 ft
Width without End Bits	3.570 m	11.71 ft
Width across End Bits (Blade Angled)	3.363 m	11.03 ft
Width without End Bits (Blade Angled)	3.266 m	10.72 ft
Maximum Blade Angle	24.1°	
<b>8</b> Height	1.312 m	4.30 ft
<b>9</b> Dig Depth	0.698 m	27.5 in
<b>10</b> Lift Height	1.131 m	44.5 in
<b>11</b> Maximum Tilt at Blade Corner	0.576 m	22.7 in
Maximum Tilt Angle	9°	
Pitch Adjustment	+3.1/-2.9°	
<b>12</b> Length of Machine (Blade Straight)	5.662 m	18.58 ft
Length of Machine (Blade Angled)	6.365 m	20.88 ft
Weight (Blade)	1436 kg	3,166 lb



# D6 Track-Type Tractors Specifications

## D6 LGP VPAT (30 in) Dimensions

Operating Weight <sup>1</sup>	23 012 kg	50,733 lb
Shipping Weight <sup>2</sup>	21 158 kg	46,645 lb
Ground Pressure (ISO 16754)	40 kPa	5.9 psi
Undercarriage (Standard)	46 Section with 8 Bottom Rollers	
Undercarriage (Optional)	46 Section with 10 Bottom Rollers	
<b>1</b> Track Gauge	2.286 m	7'6"
<b>2</b> Width of Maximum Track Shoe	0.760 m	30 in
<b>3</b> Width over Tracks	3.046 m	10'0"
<b>4</b> Length of Track on Ground	3.355 m	11'0"
Ground Contact Area (ISO 16754)	5.591 m <sup>2</sup>	60.18 ft <sup>2</sup>
Track Pitch	0.2028 m	7.9 in
Grouser Height (Moderate Service)	0.065 m	2.6 in
Ground Clearance	0.395 m	15.6 in
Oscillation at Front Idler	0.121 m	4.8 in
<b>5</b> Machine Height <sup>3</sup>	3.238 m	10'7"
<b>6</b> Length of Machine without Blade	5.134 m	16'10"
Add the following to the total length of the machine when these attachments are installed:		
Winch	416 mm	16.4 in
Ripper	1154 mm	45.4 in
Drawbar or Counterweight <sup>4</sup>	224 mm	8.8 in
Striker Box	453 mm	17.8 in

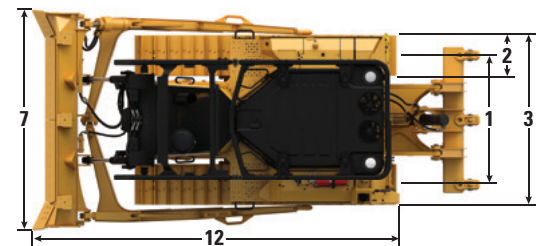
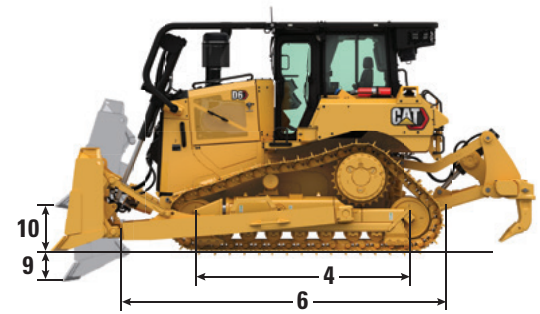
All dimensions above with HDXL undercarriage with Moderate Service shoes of maximum width for configuration, VPAT blade, and calculated per ISO 16754 unless otherwise specified.

<sup>1</sup>Operating weight includes blade, lubricants, coolant, full fuel tank, ROPS/FOPS cab, drawbar, and 75 kg (165 lb) operator.

<sup>2</sup>Shipping weight includes blade lift cylinders, C-frame, lubricants, coolant, 10% fuel, ROPS/FOPS cab, and drawbar.

<sup>3</sup>Machine height from tip of grouser to top of Product Link Antenna. For Sweeps, add 60 mm (2.36 in) to overall machine height. For forestry sweeps, add 83 mm (3.26 in). With Extreme Service Track Shoes add 12 mm (0.5 in). When Cat Grade with 3D antennas are installed there is no addition to machine height.

<sup>4</sup>Drawbar weight 119 kg (262 lb), 331 kg (730 lb) for each counterweight slab. Counterweights are only recommended with heavier aftermarket blades.



NOTE: Standard SU model with optional sweeps shown for reference.

## Blade

Configuration	6 VPAT LGP (30 in)	
Capacity (ISO 9246)	4.5 m <sup>3</sup>	5.9 yd <sup>3</sup>
<b>7</b> Width across End Bits	4.000 m	13.12 ft
Width without End Bits	3.890 m	12.76 ft
Width across End Bits (Blade Angled)	3.655 m	11.99 ft
Width without End Bits (Blade Angled)	3.554 m	11.66 ft
Maximum Blade Angle	24.1°	
<b>8</b> Height	1.312 m	4.30 ft
<b>9</b> Dig Depth	0.698 m	27.5 in
<b>10</b> Lift Height	1.131 m	44.5 in
<b>11</b> Maximum Tilt at Blade Corner	0.625 m	24.6 in
Maximum Tilt Angle	9°	
Pitch Adjustment	+3.1/-2.9°	
<b>12</b> Length of Machine (Blade Straight)	5.662 m	18.58 ft
Length of Machine (Blade Angled)	6.430 m	21.10 ft
Weight (Blade)	1520 kg	3,351 lb

# D6 Track-Type Tractors Specifications

## D6 LGP VPAT (36 in) Dimensions

Operating Weight <sup>1</sup>	23 547 kg	51,912 lb
Shipping Weight <sup>2</sup>	21 593 kg	47,604 lb
Ground Pressure (ISO 16754)	34 kPa	5.0 psi
Undercarriage (Standard)	46 Section with 8 Bottom Rollers	
Undercarriage (Optional)	46 Section with 10 Bottom Rollers	
<b>1</b> Track Gauge	2.39 m	7'10"
<b>2</b> Width of Maximum Track Shoe	0.915 m	36 in
<b>3</b> Width over Tracks	3.305 m	10'10"
<b>4</b> Length of Track on Ground	3.355 m	11'0"
Ground Contact Area (ISO 16754)	6.709 m <sup>2</sup>	72.22 ft <sup>2</sup>
Track Pitch	0.2028 m	7.9 in
Grouser Height (Moderate Service)	0.065 m	2.6 in
Ground Clearance	0.383 m	15.1 in
Oscillation at Front Idler	0.121 m	4.8 in
<b>5</b> Machine Height <sup>3</sup>	3.238 m	10'7"
<b>6</b> Length of Machine without Blade	5.134 m	16'10"
Add the following to the total length of the machine when these attachments are installed:		
Winch	416 mm	16.4 in
Ripper	1154 mm	45.4 in
Drawbar or Counterweight <sup>4</sup>	224 mm	8.8 in
Striker Box	453 mm	17.8 in

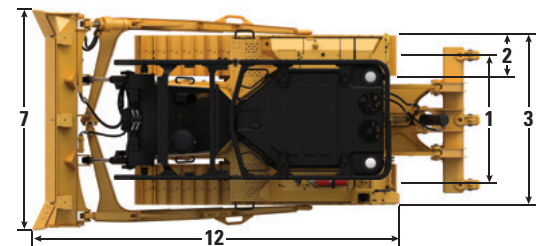
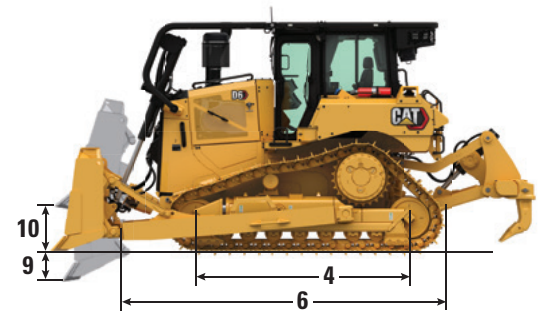
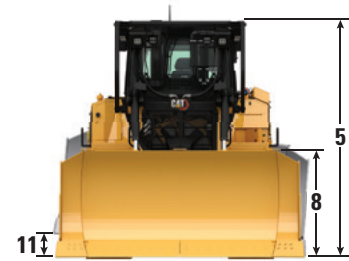
All dimensions above with Heavy Duty undercarriage with Moderate Service shoes of maximum width for configuration, VPAT blade, and calculated per ISO 16754 unless otherwise specified.

<sup>1</sup>Operating weight includes blade, lubricants, coolant, full fuel tank, ROPS/FOPS cab, tow point, and 75 kg (165 lb) operator.

<sup>2</sup>Shipping weight includes blade lift cylinders, C-frame, lubricants, coolant, 10% fuel, ROPS/FOPS cab, and tow point.

<sup>3</sup>Machine height from tip of grouser to top of Product Link Antenna. For Sweeps, add 60 mm (2.36 in) to overall machine height. For forestry sweeps, add 83 mm (3.26 in). With Extreme Service Track Shoes add 12 mm (0.5 in). When Cat Grade with 3D antennas are installed there is no addition to machine height.

<sup>4</sup>Drawbar weight 119 kg (262 lb), 331 kg (730 lb) for each counterweight slab. Counterweights are only recommended with heavier aftermarket blades.



*NOTE: Standard SU model with optional sweeps shown for reference.*

## Blade

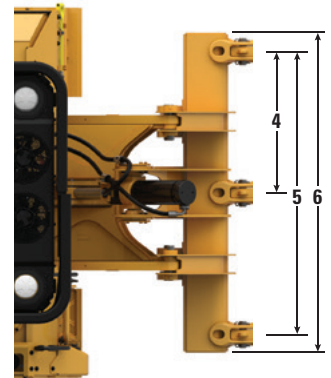
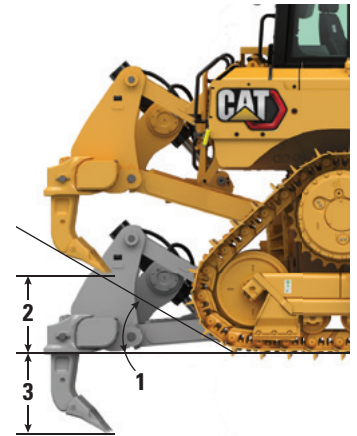
Configuration	6 VPAT LGP (36 in)	
Capacity (ISO 9246)	4.86 m <sup>3</sup>	6.5 yd <sup>3</sup>
<b>7</b> Width across End Bits	4.340 m	14.24 ft
Width without End Bits	4.230 m	13.88 ft
Width across End Bits (Blade Angled)	3.966 m	13.01 ft
Width without End Bits (Blade Angled)	3.868 m	12.69 ft
Maximum Blade Angle	24.1°	
<b>8</b> Height	1.312 m	4.30 ft
<b>9</b> Dig Depth	0.698 m	27.5 in
<b>10</b> Lift Height	1.131 m	44.5 in
<b>11</b> Maximum Tilt at Blade Corner	0.684 m	26.9 in
Maximum Tilt Angle	9°	
Pitch Adjustment	+3.1/-2.9°	
<b>12</b> Length of Machine (Blade Straight)	5.662 m	18.58 ft
Length of Machine (Blade Angled)	6.500 m	21.33 ft
Weight (Blade)	1621 kg	3,574 lb

# D6 Track-Type Tractors Specifications

## Ripper

Type	Fixed Parallelogram	
Number of Pockets	3	
<b>1</b> Ramp Angle	31 degrees	
<b>2</b> Maximum Clearance Raised (under tip)	664 mm	26.1 in
<b>3</b> Maximum Penetration	571 mm	22.5 in
<b>4</b> Pocket Spacing	1000 mm	39.4 in
<b>5</b> Shank Gauge	2000 mm	78.8 in
Shank Section	74 mm × 175 mm	2.9 in × 6.9 in
<b>6</b> Overall Beam Width	2190 mm	86 in
Beam Cross Section	219 mm × 304 mm	8.8 in × 12 in
Maximum Penetration Force*	68.8 kN	15,470 lbf
Pryout Force	126 kN	28,350 lbf
Ripper Weight		
With One Shank	1550 kg	3,417 lb
Each Additional Shank	73 kg	161 lb

\*May vary based on configuration and machine weight.



# D6 Track-Type Tractors Specifications

## Winches

Winch model	PA56 (Low Speed)		PA56 (Standard Speed)	
Winch Drive	PTO Mechanical		PTO Mechanical	
Control	Electrical		Electrical	
Operating Weight <sup>1</sup>	1582 kg	3,487 lb	1582 kg	3,487 lb
Oil Capacity	43.5 L	11.5 gal	43.5 L	11.5 gal
Increased Tractor Length				
Standard/LGP	516 mm	20.4 in	516 mm	20.4 in
LGP (36 in)	365 mm	14.4 in	365 mm	14.4 in
Drum Diameter	254 mm	10 in	254 mm	10 in
Rope Diameter				
Recommended	22 mm	0.88 in	22 mm	0.88 in
Optional	25 mm	1.0 in	25 mm	1.0 in
Drum Working Capacity				
22 mm (0.88 in)	55 m	180 ft	55 m	180 ft
25 mm (1.0 in)	50 m	163 ft	50 m	163 ft
Cable Ferrule Size (O.D. × Length)	54 mm × 67 mm	2.1 in × 2.6 in	54 mm × 67 mm	2.1 in × 2.6 in
Maximum Bare Drum				
Line Pull <sup>2</sup>	399 kN	89,800 lb	399 kN	89,800 lb
Line Speed <sup>3</sup>	17 m/min	57 ft/min	33 m/min	107 ft/min
Maximum Full Drum <sup>4</sup>				
Line Pull <sup>2</sup>	399 kN	89,800 lb	399 kN	89,800 lb
Line Speed <sup>3</sup>	29 m/min	94 ft/min	55 m/min	179 ft/min

<sup>1</sup>Operating Weight includes winch, mounting hardware, oil, and recommended wire rope.

<sup>2</sup>Maximum line pull is lesser of calculated line pull at maximum tractor Power Take Off (PTO) output torque/hydraulic power or catalog breaking strength of maximum size new IWRC IPS wire rope.

<sup>3</sup>Maximum line speed is calculated on-load line speed at maximum tractor engine PTO speed or maximum hydraulic power.

<sup>4</sup>Full drum as defined by SAE J1158.

# D6 Track-Type Tractors Specifications

## Track Shoes

Some track shoes not available in all regions. Please consult your Cat dealer for details.

	Moderate Service	Extreme Service	Extreme Service Trapezoidal	Self Cleaning	Quad/Quad Ready
<b>Heavy Duty Extended Life (HDXL)</b>					
<b>42 Link</b>					
560 mm (22 in)	✓	✓	✓		
610 mm (24 in)	✓	✓	✓		
610 mm (24 in)			Heavy Duty		
<b>LGP (36 in) – 45 Link</b>					
610 mm (24 in)	✓	✓	✓		
760 mm (30 in)	✓	✓	✓		
915 mm (36 in)	✓	✓	✓		✓
1000 mm (39 in)				HD/HDXL	
<b>VPAT – 45 Link</b>					
610 mm (24 in)	✓	✓			
<b>LGP VPAT – 46 Link</b>					
610 mm (24 in)	✓	✓	✓		
660 mm (26 in)	✓				
710 mm (28 in)	✓				
760 mm (30 in)	✓	✓	✓		
<b>LGP VPAT (36 in) – 46 Link</b>					
760 mm (30 in)	✓	✓	✓		
915 mm (36 in)	✓	✓	✓		✓
<b>Cat Abrasion™</b>					
<b>42 Link</b>					
560 mm (22 in)	✓	✓			
610 mm (24 in)	✓	✓			
<b>LGP (36 in) – 45 Link</b>					
760 mm (30 in)	✓	✓			
915 mm (36 in)	✓	✓			
<b>VPAT – 45 Link</b>					
610 mm (24 in)	✓	✓			
<b>LGP VPAT – 46 Link</b>					
660 mm (26 in)	✓				
710 mm (28 in)	✓				
760 mm (30 in)	✓	✓			
<b>LGP VPAT (36 in) – 46 Link</b>					
760 mm (30 in)	✓	✓			
915 mm (36 in)	✓	✓			

# D6 Track-Type Tractors Specifications

## Dozer Technology Features

Assist technology features help operators of varied experience levels get the job done faster and more accurately. Grade and Command offering help further enhance your productivity, efficiency and jobsite safety.

The cab is Third Party Grade Control Ready, equipped with Controller Area Network (CAN) interface, harness pass throughs and mounting features to make it easier to install the grade control system of your choice.

Technology applies to all machine configurations.

### Cat Assist with ARO

Attachment Ready Option (ARO)	ARO provides wiring and mounting provisions for dealer installation of Grade with 3D, AccuGrade, Universal Total Station (UTS), or other grade control systems.
Cat Grade with Slope Assist™	Slope Assist automatically maintains pre-established blade position without a Global navigation satellite system (GNSS)/Global Positioning System (GPS) signal – no additional hardware or software needed. For machines with 3D, operators can easily switch back and forth from full 3D automatics to Slope Assist.
Steer Assist	Steer Assist automates track and blade tilt steering. Helps reduce operator fatigue by automatically maintaining straight travel with light loads or heavy loads on flat ground and cross slopes. No GNSS/GPS required.
Stable Blade	Stable Blade works seamlessly with operator inputs to help produce a smoother surface when operating manually.
Slope Indicate	Slope Indicate is included in the main machine display and shows side slope and uphill/downhill grades to help operators with slope work.
Blade Load Monitor	Blade Load Monitor gives you real-time feedback on current load versus the optimal blade load based on your ground conditions. Actively monitors machine load and track slip to help you reach optimal pushing capacity. <sup>1</sup>
Traction Control	Traction Control automatically reduces track slip to save you time, fuel and track wear. <sup>1</sup>
AutoCarry™	AutoCarry automates blade lift to help you maintain consistent blade load and help reduce track slip. <sup>1</sup>

### Cat Grade 3D Ready (hardware only)

**Includes all features from Cat Assist with ARO listed above, plus:**

Cat Grade with 3D (hardware only)	Factory integrated Cat Grade with 3D uses GNSS/GPS to control the blade so you can get to design plan faster. Low profile antennas are integrated into the cab roof and GNSS/GPS receivers are mounted inside the cab for better protection. <sup>2</sup>
Dedicated Touchscreen Grade Display	Full-color Grade operator interface is intuitive and easy to use. The 254 mm (10 in) touchscreen uses an Android OS platform and operates like a smart phone.

**NOTE:** Grade 3D Ready option requires additional license purchase and installation to upgrade to a fully functional Grade 3D system. Consult your Cat dealer for more information.

### Cat Grade 3D with Assist

**Includes all features from Cat Grade 3D Ready (Hardware Only) listed above, plus:**

Steer Assist 3D	Automatically follow guidance lines from site design plans (or Infield designs) under light load or heavy load. <sup>2</sup>
-----------------	--

**NOTE:** Includes required licenses and software.

### Cat Command/Remote Control

Remote Control Ready Cab (Standard)	Cab is Remote Control Ready from the factory with external connector for dealer installation of the Cat Command remote control system.
Command for Dozing <sup>2</sup> (Optional)	Cat Command remote control technology provides full dozer maneuverability from a safe distance.

<sup>1</sup>Feature not operational indoors or in areas where a GNSS/GPS signal is not available.

<sup>2</sup>Requires Software Enabled Attachment (SEA) installation when not configured from the factory.

**Note:** Grade and Assist technologies, except Slope Indicate, Blade Load Monitor and Traction Control, are not compatible with Angle blades or specialty blades from Cat Work Tools. Please consult with your Cat dealer for details.

# D6 Standard and Optional Equipment

## Standard and Optional Equipment

Standard and optional equipment may vary. Consult your Cat dealer for details.

	Standard	Optional		Standard	Optional
<b>POWERTRAIN</b>			<b>OPERATOR ENVIRONMENT</b>		
Cat® C9.3B engine	✓		Fully redesigned Premium cab with integrated ROPS and FOPS, single pane door glass, sliding windows, with Cat Advanced Cabin Filtration	✓	
Differential steering system	✓		High debris cab, fully redesigned with integrated ROPS and FOPS, impact resistant polycarbonate doors, solid side windows for improved sealing, powered pre-cleaner with Cat Advanced Cabin Filtration for improved performance and filter life		✓
Fully automatic 4-speed transmission with Lock Up Clutch (LUC) torque divider	✓		Fully redesigned heavy duty cab with integrated ROPS and FOPS, impact resistant polycarbonate doors, sliding windows, with Cat Advanced Cabin Filtration		✓
Engine air pre-cleaner with dust ejection	✓		Gauge Cluster	✓	
Engine air pre-cleaner with dust ejection and screen for high debris applications		✓	Full-color 254 mm (10 inch) liquid crystal touchscreen display		✓
Double reduction planetary final drives	✓		Integrated rearview camera	✓	
Double reduction planetary final drives, guarded		✓	Joystick control – ARO		✓
Automatic ether starting aid	✓		Adjustable operator controls/armrests	✓	
Electric fuel priming pump	✓		Cloth seat with mechanical adjustable lumbar support	✓	
Electronic parking brake	✓		Deluxe leather heated/ventilated seat with electronic adjustable lumbar support		✓
Engine air filter with electronic service indicator	✓		Cab mounted modular HVAC system with automatic reversing fans. Automatic temperature and blower control with distributed ducting.	✓	
Fuel water separator with electronic service indicator	✓		Cat Advanced Cabin Filtration with powered pre-cleaner with MERV 16, HEPA, and Activated Charcoal options		✓
Jacket water heater, 110V OR 220V based on sales region	✓		Viscous cab mounts for improved ride	✓	
<b>CAT TECHNOLOGY</b>			Entertainment radio with Bluetooth and microphone		✓
Slope Indicate	✓		USB and Auxiliary ports	✓	
Cat Assist with ARO package*		✓	Enhanced cab storage solutions	✓	
Cat Grade 3D Ready with Assist package (hardware only)*		✓	Adjustable foot pegs	✓	
Cat Grade 3D with Assist package*		✓	Quick opening floor plate		✓
Third Party Grade Control Ready Cab	✓		Screen ready, side and rear	✓	
Compatibility with radios and base stations from Trimble, Topcon, and Leica	✓		Operator presence switch	✓	
Capability to install 3D grade systems from Trimble, Topcon, and Leica	✓				
Product Link – cellular	✓				
Product Link – dual cellular/satellite		✓			
Remote Flash/Troubleshoot	✓				
Grade connectivity		✓			
Operator ID	✓				
Machine security – passcode	✓				
Machine security – Bluetooth®		✓			
Remote Control Ready	✓				
Cat Command for Dozing		✓			

\*Refer to page 14 for technology package details.

(continued on next page)

# D6 Standard and Optional Equipment

## Standard and Optional Equipment *(continued)*

Standard and optional equipment may vary. Consult your Cat dealer for details.

	Standard	Optional		Standard	Optional
<b>UNDERCARRIAGE</b>			<b>HYDRAULICS</b>		
Structurally improved track roller frame designed to allow conversion between HDXL and Abrasion	✓		Load sensing hydraulics – dozer lift and tilt	✓	
Undercarriage with 8 bottom rollers	✓		Independent steering hydraulics	✓	
Undercarriage with 10 bottom rollers for fine grading applications		✓	Ripper ready rear hydraulics	✓	
Waste undercarriage		HDXL only	Ripper and winch ready rear hydraulics		✓
Partially guided undercarriage		✓	Single axis ripper control	✓	
Fully guided undercarriage		✓	Dual axis ripper/winch control		✓
Heavy Duty (HDXL with DuraLink™)	✓		Hydraulic automatically reversing, zero speed capable cooling fan	✓	
Cat Abrasion™ track		✓	Electronic hydraulic lockout switch	✓	
Moderate service track shoes (see chart on page 15)	✓		<b>ELECTRICAL</b>		
Extreme service track shoes (see chart on page 15)		✓	Standard Lights – 4 LED light package	✓	
Carrier roller	✓		Optional Lights – 6 LED light package		✓
Hydraulically adjustable track	✓		Premium Lights – 12 LED light package		✓
Replaceable sprocket rim segments	✓		Backup alarm	✓	
<b>BLADES</b>			Integrated beacon warning light (does not impact shipping height)		✓
Semi-Universal, ARO mounts		✓	Communication radio ready kit		✓
Semi-Universal, LGP with ARO mounts		✓	Converter: 15 Amp, 12V outlet	✓	
Semi-Universal, Waste		✓	Diagnostic connector	✓	
Semi-Universal, LGP Waste		✓	Forward warning horn	✓	
Straight blade, LGP with ARO mounts		✓	Fuse panel and main power relay located inside cab	✓	
Straight blade, LGP Waste		✓			
VPAT, ARO mounts		✓			
VPAT, LGP with ARO mounts		✓			
Cat FirstCut cutting edges (SU blades)		✓			

*(continued on next page)*



## Standard and Optional Equipment (continued)

Standard and optional equipment may vary. Consult your Cat dealer for details.

	Standard	Optional		Standard	Optional
<b>SERVICE AND MAINTENANCE</b>			<b>ATTACHMENTS</b>		
30-minute cab removal		✓	Drawbar	✓	
Ecology drains	✓		High lift multi-shank ripper with straight or curved shanks		✓
Ecology drains with high speed oil power train and engine oil change		✓	Lightweight rear tow point		✓
Ground level service center with remote electrical disconnect, access light, and secondary shutdown switch	✓		Striker bar box		✓
Hour meter		✓	Counterweights (not recommended unless using heavier aftermarket blades)		✓
Fuel tank, 341 L (90 gal)	✓		PACCAR PA56 winch, low speed PTO		✓
Fuel tank, 341 L (90 gal), fast fill ready		✓	PACCAR PA85 winch, variable speed hydraulic		✓
Wiggins style fast fill nozzle		✓	PACCAR PA56 winch, standard speed PTO		Dealer only
Mounting provisions for grease gun, shovel, and fire extinguisher	✓		Allied H6H winch, variable speed hydraulic		Dealer only
Perforated radiator doors, louvered and hinged	✓		Fairlead Assembly; 3-roller, fits PA55, PA56, and PA85 winches		✓
Rear access ladder	✓		Retrofit kit (4th roller); fits PA55, PA56, and PA85 winches		✓
Rear work light		✓	<b>GUARDING AND SCREENS</b>		
Removable engine enclosures, perforated and hinged, with under hood work light	✓		Hinged bottom guards	✓	
Scheduled Oil Sampling (S·O·S <sup>SM</sup> ) ports	✓		Heavy duty sealed and hinged bottom guards		Push Arm only
Maintenance free equalizer bar	✓		Heavy duty sealed quick access hinged bottom guards		Push Arm only
Certified ISO 14567 tie off points (3)	✓		Standard duty grab handles	✓	
Vandalism protection for fluid compartments and battery box	✓		Heavy duty grab handles		✓
Dedicated shipping tie downs, rear	✓		Open Sweeps guarding		✓
<b>BATTERIES, STARTERS, ALTERNATORS AND FLUIDS</b>			Forestry Sweeps guarding with full canopy		✓
95 Amp alternator	✓		Hinged rear screen		✓
150 Amp alternator		✓	Hinged side screens		✓
150 Amp ducted alternator		✓	Fuel tank guard (with or without fast fill)		✓
Heavy duty batteries, two maintenance-free 12V (1,400 CCA) (24V system)		✓	Guards for premium lights, front and side		✓
Heavy duty, 24V starter	✓		Machine seals for high debris		✓
Extended Life Engine coolant, -37° C (-35° F)	✓		Front and rear striker bars		Dealer only
Extended Life Arctic engine coolant, -51° C (-60° F)		✓			

# D6 Environmental Declaration

The following information applies to the machine at the time of final manufacture as configured for sale in the regions covered in this document. The content of this declaration is valid as of the date issued; however, content related to machine features and specifications are subject to change without notice. For additional information, please see the machine's Operation and Maintenance Manual.

For more information on sustainability in action and our progress, please visit <https://www.caterpillar.com/en/company/sustainability>.

## Engine

- The Cat C9.3B engine meets Brazil MAR-1 and UN ECE R96 Stage IIIA emission standards, equivalent to U.S. EPA Tier 3/ EU Stage IIIA emission standards.
- Cat engines are compatible with diesel fuel blended with the following lower-carbon intensity fuels\*\* up to:
  - ✓ 20% biodiesel FAME (fatty acid methyl ester)\*
  - ✓ 100% renewable diesel, HVO (hydrogenated vegetable oil) and GTL (gas-to-liquid) fuelsRefer to guidelines for successful application. Please consult your Cat dealer or "Caterpillar Machine Fluids Recommendations" (SEBU6250) for details.  
*\*For use of blends higher than 20% biodiesel, consult your Cat dealer.*  
*\*\*Tailpipe greenhouse gas emissions from lower-carbon intensity fuels are essentially the same as traditional fuels.*

## Air Conditioning System

- The air conditioning system on this machine contains the fluorinated greenhouse gas refrigerant R134a (Global Warming Potential = 1430). The system contains 1.36 kg (2.99 lb) of refrigerant which has a CO<sub>2</sub> equivalent of 1.946 metric tonnes (2.145 tons).

## Paint

- Based on best available knowledge, the maximum allowable concentration, measured in parts per million (PPM), of the following heavy metals in paint are:
  - Barium < 0.01%
  - Cadmium < 0.01%
  - Chromium < 0.01%
  - Lead < 0.01%

## Sound Performance

For machines required to meet applicable regional regulations of Ukraine, United Kingdom, and Countries that adopt the "EU Directives."

Operator Sound Pressure Level (ISO 6396:2008) – 78 dB(A)

Exterior Sound Power Level (ISO 6395:1988) – 111 dB(A)

## Oils and Fluids

- Caterpillar factory fills with ethylene glycol coolants. Cat Diesel Engine Antifreeze/Coolant (DEAC) and Cat Extended Life Coolant (ELC) can be recycled. Consult your Cat dealer for more information.
- Cat Bio HYDO™ Advanced is an EU Ecolabel approved biodegradable hydraulic oil.
- Additional fluids are likely to be present, please consult the Operations and Maintenance Manual or the Application and Installation guide for complete fluid recommendations and maintenance intervals.

## Features and Technology

- The following features and technology may contribute to fuel savings and/or carbon reduction. Features may vary. Consult your Cat dealer for details.
  - Fully automatic 4-speed powershift transmission continuously adjusts for maximum efficiency.
  - Assist technology features reduce operator inputs up to 45%.<sup>1</sup>
  - Remote Flash and Remote Troubleshoot

<sup>1</sup>Input reduction based on product testing of a D5 (17B) Next Generation Dozer with and without the use of Assist technology features, in a truck dump spreading in sand application. Inputs measured as number of times operator adjusts controls, collected and verified by electronic control module (ECM). Test conducted by Caterpillar in Washington, IL July 2022.

## Recycling

- The materials included in machines are categorized as below with approximate weight percentage. Because of variations of product configurations, the following values in the table may vary.

Material Type	Weight Percentage
Steel	77.19%
Iron	9.40%
Nonferrous Metal	2.34%
Mixed Metal	0.15%
Mixed-Metal and Nonmetal	2.42%
Plastic	0.64%
Rubber	0.71%
Mixed Nonmetallic	0.03%
Fluid	0.39%
Other	0.69%
Uncategorized	6.05%
Total	100%

- A machine with higher recyclability rate will ensure more efficient usage of valuable natural resources and enhance End-of-Life value of the product. According to ISO 16714 (Earthmoving machinery – Recyclability and recoverability – Terminology and calculation method), recyclability rate is defined as percentage by mass (mass fraction in percent) of the new machine potentially able to be recycled, reused, or both.

All parts in the bill of material are first evaluated by component type based on a list of components defined by the ISO 16714 and Japan CEMA (Construction Equipment Manufacturers Association) standards. Remaining parts are further evaluated for recyclability based on material type.

Because of variations of product configurations, the following value in the table may vary.

Recyclability – 98%



# D6

## Waste Handler

***Waste Handling package provides added features to help protect the machine and operator in harsh waste applications. Specialized guarding, striker bars and seals help protect the machine from impact, wrapping and airborne debris.***

### **Next Generation Performance**

- Fully automatic 4-speed transmission continuously adjusts for optimal efficiency and power to the ground.
- Maneuverability and power give you more agility and faster cycle times.
- Ease of operation – automatically optimizes for the application with no need to shift gears.

### **Added Machine Protection**

- High debris cab has impact-resistant polycarbonate doors, eliminating the need for door screens. Solid side windows help improve pressurization.
- Powered pre-cleaner is integrated for cleaner cab air and increases the cab filter change interval to 1,000 hours. MERV16, HEPA, and Activated Carbon filters are available.
- Fuel tank guards and hinged heavy duty sealed bottom guards for easy cleaning and to keep debris out.
- High debris seals offer additional protection around fenders, fuel tank, radiator guard and rear hood support. Provides a seal across the top, rear of the case to prevent debris entry.
- Rear striker bar helps protect against trash climbing up the tracks.
- Track roller frame mounted striker bars are available for reduced track widths. Contact your dealer for details.
- Heavy duty guarded final drives provide added protection against wrapping and impact. Pivot shaft seal guards help prevent debris from entering and damaging seals.
- Guarded lights mounted up and away from main debris area for protection, while still giving you plenty of light on the work area.
- Optional Premium light packages offer 360-degree light coverage.
- Three warning lights integrated into the top perimeter of the cab, fully visible for a 360 degree view.
- Optional side and rear cab screens available for extra protection.

### **Ease of Maintenance**

- Single plane cooling system with automatic reversing fan aids cleanout.
- Ducted alternator to get fresher/filtered air to the alternator.
- High debris engine air filtration system extends filter life.
- Laminated thermal shields and insulated Clean Emissions Module provide added thermal protection in high debris applications.
- Quick access floor panels give you tool-less access for easy cleanout.
- Auto-reversing Heating/Ventilation/Air Conditioning (HVAC) system fans to keep core clean.
- If needed, cab can be removed in 30-minutes, aiding tasks like fire suppression equipment installation.
- Dedicated mounting location for fire extinguisher.
- Mounting bracket keeps shovel handy for quick cleanouts.

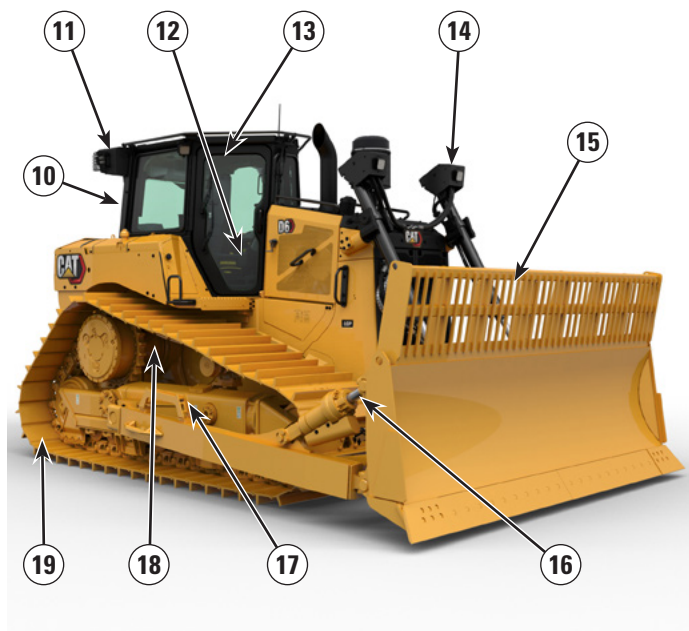
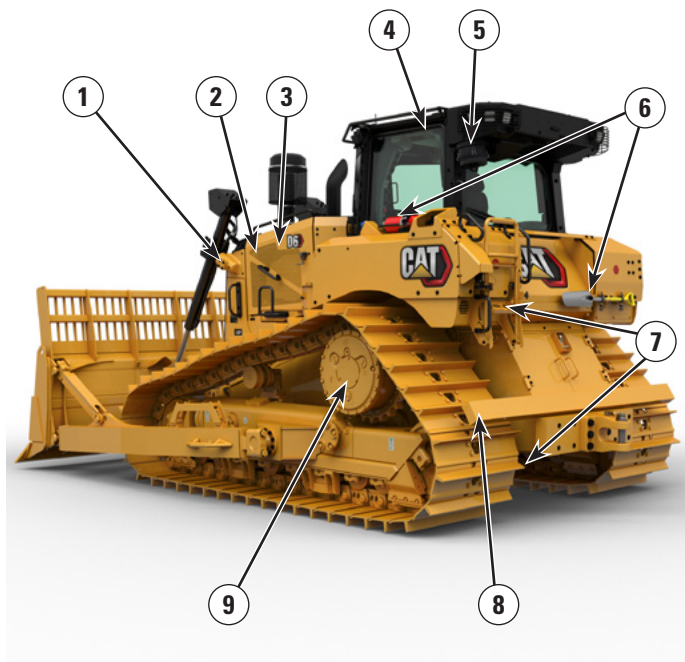
### **Equipped for the Job**

- Landfill blades are equipped with a trash rack to increase productive capacity when machine works in waste streams.
- Guarded bulldozer arrangement provides sleeves to protect cylinder lines in harsh applications. Includes push arms, trunnions, tilt cylinder line and tilt cylinder.
- Heavy Duty Extended Life (HDXL) undercarriage includes Kevlar® guarded, sealed idlers to help prevent debris such as wire, string or plastic bags from wrapping into seals.
- Press-fit bushings and Positive Pin Retention (PPR2) are particularly well suited for impact applications like waste.
- Center-hole track shoes help eject debris.
- Heavy duty grab handles aid access/egress.

# D6 Waste Handler Specifications

## D6 Waste Handler Features

- 1) Single plane cooling system with automatic reversing fan aids cleanout.
- 2) Ducted alternator to get fresher/filtered air to the alternator. High debris engine air filtration system extends filter life.
- 3) Laminated thermal shields and insulated Clean Emissions Module provide added thermal protection in high debris applications.
- 4) High debris cab has impact-resistant polycarbonate doors, eliminating the need for door screens. Solid side windows help improve pressurization.
- 5) Powered pre-cleaner is integrated for cleaner cab air and increases the cab filter change interval to 1,000 hours. MERV16, HEPA, and Activated Carbon filters are available.
- 6) Dedicated mounting location for fire extinguisher. Mounting bracket keeps shovel handy for quick cleanouts.
- 7) Fuel tank guards and hinged heavy duty sealed bottom guards for easy cleaning and to keep debris out. High debris seals offer additional protection around fenders, fuel tank, radiator guard and rear hood support. Provides a seal across the top, rear of the case to prevent debris entry.



- 8) Rear striker bar helps protect against trash climbing up the tracks.
- 9) Heavy duty guarded final drives provide added protection against wrapping and impact. Pivot shaft seal guards help prevent debris from entering and damaging seals.
- 10) If needed, cab can be removed in 30-minutes, aiding tasks like fire suppression equipment installation.
- 11) Auto-reversing Heating/Ventilation/Air Conditioning (HVAC) system fans to keep core clean
- 12) Quick access floor panels give you tool-less access for easy cleanout.
- 13) Three warning lights integrated into the top perimeter of the cab, fully visible for a 360-degree view
- 14) Guarded lights mounted up and away from main debris area for protection, while still giving you plenty of light on the work area. Optional Premium light packages offer 360-degree light coverage.

- 15) Landfill blades are equipped with a trash rack to increase productive capacity when machine works in waste streams.
- 16) Guarded bulldozer arrangement provides sleeves to protect cylinder lines in harsh applications. Includes push arms, trunnions, tilt cylinder line and tilt cylinder.
- 17) Heavy Duty Extended Life (HDXL) undercarriage includes Kevlar® guarded, sealed idlers to help prevent debris such as wire, string or plastic bags from wrapping into seals.
- 18) Press-fit bushings and Positive Pin Retention (PPR2) are particularly well suited for impact applications like waste.
- 19) Center-hole track shoes help eject debris.

# D6 Waste Handler Specifications

## Engine

Engine Model	Cat C9.3B	
Emissions	Brazil MAR-1 and UN ECE R96 Stage IIIA emission standards, equivalent to U.S. EPA Tier 3/EU Stage IIIA	
Net Power – 2,200 rpm		
ISO 9249/SAE J1349	161 kW	215 hp
ISO 9249 (DIN)	219 mhp	
Engine Power – 1,200 rpm		
ISO 14396	187 kW	251 hp
ISO 14396 (DIN)	254 mhp	
Gross Power: SAE J1995:2014	190 kW	255 hp
Bore	115 mm	4.5 in
Stroke	149 mm	5.9 in
Displacement	9.3 L	567 in <sup>3</sup>

- The Cat C9.3B engine features a high pressure common rail fuel system, simplified engine system electronics, and simplified air system through the removal of the previously used exhaust gas recirculation (EGR) system.
- Net power advertised is the power available at the engine flywheel when the engine is equipped with a fan, air cleaner, clean emissions module and alternator.
- Advertised power is tested per the specified standard in effect at the time of manufacture.
- No derating required up to 2286 m (7,500 ft). Above this, automatic derating occurs.
- Cat engines are compatible with diesel fuel blended with the following lower-carbon intensity fuels\*\* up to:
  - ✓ 20% biodiesel FAME (fatty acid methyl ester)\*
  - ✓ 100% renewable diesel, HVO (hydrogenated vegetable oil) and GTL (gas-to-liquid) fuels

Refer to guidelines for successful application. Please consult your Cat dealer or “Caterpillar Machine Fluids Recommendations” (SEBU6250) for details.

\*For use of blends higher than 20% biodiesel, consult your Cat dealer.

\*\*Tailpipe greenhouse gas emissions from lower-carbon intensity fuels are essentially the same as traditional fuels.

## Fluid/Refill Capacities

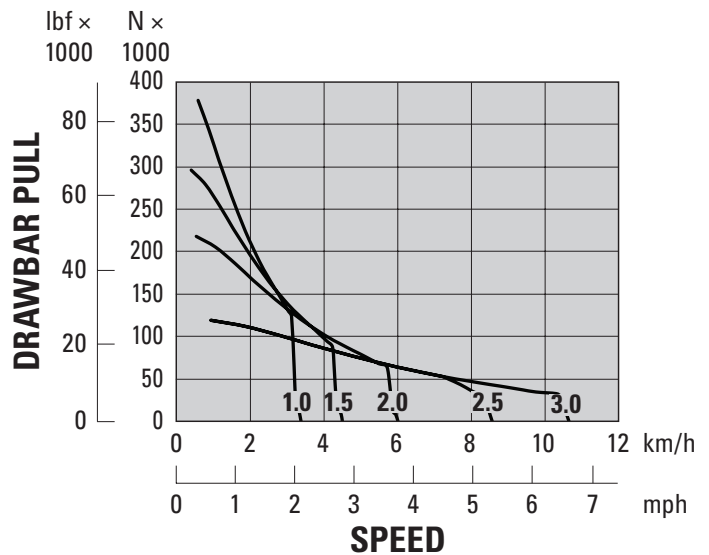
Fuel Tank	341 L	90 gal
Cooling System	63 L	16.6 gal
Engine Crankcase	24.5 L	6.5 gal
Power Train Oil	148 L	39.1 gal
Final Drives (each)	18.2 L	4.8 gal
Roller Frames (each)	65-85 L	17.2-22.5 gal
Pivot Shaft Compartment	2.8 L	0.74 gal
Hydraulic Tank Oil	60 L	15.8 gal
Hydraulic System	77 L	20.3 gal

## Transmission

1.0 Forward	3.3 kph	2.1 mph
1.5 Forward	4.5 kph	2.8 mph
2.0 Forward	6.0 kph	3.7 mph
2.5 Forward	8.5 kph	5.3 mph
3.0 Forward	10.7 kph	6.6 mph
1.0 Reverse	3.1 kph	1.9 mph
1.5 Reverse	4.0 kph	2.5 mph
2.0 Reverse	5.8 kph	3.6 mph
2.5 Reverse	8.0 kph	5.0 mph
3.0 Reverse	10.7 kph	6.7 mph

## Drawbar Pull

1.0 Forward	422 kN	94,869 lbf
1.5 Forward	311 kN	69,916 lbf
2.0 Forward	230 kN	51,706 lbf
2.5 Forward	126 kN	28,326 lbf
3.0 Forward	126 kN	28,326 lbf



**NOTE:** Usable pull will depend on traction and weight of machine.

# D6 Waste Handler Specifications

## Hydraulic Controls – Maximum Operating Flows

	1,750 rpm engine speed*	
Implement Pump Maximum Flow	204 L/min	54 gal/min
Steering Pump Maximum Flow	192 L/min	51 gal/min
Fan Pump Flow at Maximum Fan (1,625 rpm)	41 L/min	11 gal/min

\*Engine speed varies with load and travel speed. A high idle/low working load speed shown.

## Hydraulic Controls – Maximum Operating Pressures

Implement Relief*	27 600 ± 500 kPa	4,000 ± 73 psi
Steering – 90 cc pump		
Electronic Relief	42 500 ± 1000 kPa	6,168 ± 145 psi
System Maximum Relief	48 000 ± 1000 kPa	6,962 ± 145 psi

\*Implement relief pressure increased over prior model D6 tractors. Consult with your dealer prior to using older vintage or third party implements.

## Air Conditioning System

The air conditioning system on this machine contains the fluorinated greenhouse gas refrigerant R134a (Global Warming Potential = 1430). The system contains 1.36 kg (2.99 lb) of refrigerant which has a CO<sub>2</sub> equivalent of 1.946 metric tonnes (2.145 tons).

## Advanced Cabin Filtration

### Operator Cabin

- Distributed HVAC ducting with automatic temperature control and blower speed provides ultimate operator comfort with less user input.
- Reduced maintenance of the condenser core with automatic reversing fans.
- Cat Advanced Cabin Filtration is standard.

### Cat Advanced Cabin Filtration

- Operator protection from respirable particulate (0.3-10 micron size).
- Sustainably pressurized cab (US Silica compliant).
- Reduced maintenance with longer life, high efficiency filters.
- Protection for all cabin components: electronics, etc.
- Helps meet U.S. Occupational Safety and Health Administration Silica Rule Table 1 requirements for operator cabs.
- Multi-tiered filter offerings for optional efficiency upgrades. Contact Cat dealer for availability.
  - MERV 16 – Standard Equipment
  - HEPA
  - Activated Carbon + HEPA
  - ABEK1 + HEPA

## Standards

### Rollover Protective Structure (ROPS)/ Falling Object Protective Structure (FOPS)

- ROPS meets the following criteria: ISO 3471:2008.
- FOPS meets the following criteria: ISO 3449:2005 Level II.

### Brakes

- Brakes meet the standard ISO 10265:2008.

### Sound Level Information

Hearing protection may be needed when the machine is operated with an open operator station, in a noisy environment, with a cab that is not properly maintained, or when the doors and windows are open for extended periods of time.

Sound Level		Test Method
Operator Sound Pressure Level	78 dB(A)*	“ISO 6396:2008” <sup>(1)</sup>
Exterior Sound Power Level	113 dB(A)	“ISO 6395:2008” <sup>(2)</sup>
	111 dB(A)*	“ISO 6395:1988” <sup>(2)</sup>

\*Including machines required to meet applicable regional regulations of Ukraine, United Kingdom, and Countries that Adopt the “EU Directives”; or machines equipped with the sound-suppression package.

<sup>(1)</sup>The measurement was conducted at 70% of the maximum engine cooling fan speed. The sound level may vary at different engine cooling fan speeds. The measurement was conducted with the cab doors and the cab windows closed. The cab was properly installed and maintained.

<sup>(2)</sup>The measurement was conducted at 70% of the maximum engine cooling fan speed. The sound level may vary at different engine cooling fan speeds.

The sound levels listed above include both measurement uncertainty and uncertainty due to production variation.

# D6 Waste Handler Specifications

## D6 LGP (36 in) Waste Handler Dimensions

Operating Weight <sup>1</sup>	25 414 kg	56,028 lb
Shipping Weight <sup>2</sup>	21 165 kg	46,660 lb
Ground Pressure (ISO 16754)	38.6 kPa	5.6 psi
Undercarriage (Standard)	45 Section with 8 Bottom Rollers	
<b>1</b> Track Gauge	2.286 m	7'6"
<b>2</b> Width of Maximum Track Shoe	0.915 m	36 in
<b>3</b> Width over Tracks	3.200 m	10'6"
Width over Trunnions	3.491 m	11'6"
<b>4</b> Length of Track on Ground	3.247 m	10'8"
Ground Contact Area (ISO 16754)	6.505 m <sup>2</sup>	70.02 ft <sup>2</sup>
Track Pitch	0.2028 m	7.9 in
Grouser Height (Moderate Service)	0.065 m	2.6 in
Ground Clearance	0.411 m	16.2 in
Oscillation at Front Idler	0.116 m	4.6 in
<b>5</b> Machine Height <sup>3</sup>	3.238 m	10'7"
<b>6</b> Length of Machine without Blade	5.040 m	16'6"
Add the following to the total length of the machine when these attachments are installed:		
Winch	441 mm	17.4 in
Ripper	1179 mm	46.4 in
Drawbar or Counterweight <sup>4</sup>	249 mm	9.8 in
Striker Box	478 mm	18.8 in

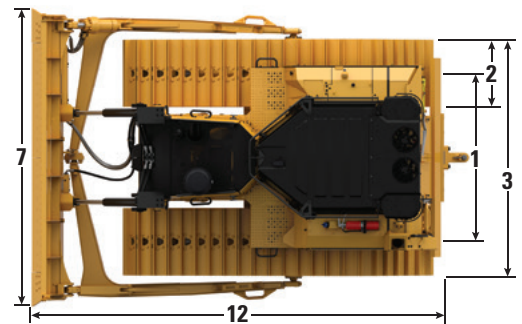
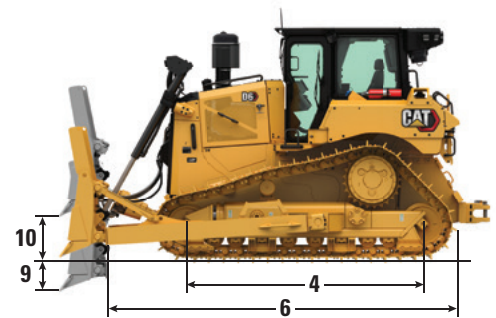
All dimensions above with HDXL waste undercarriage with Extreme Service shoes of maximum width for configuration, waste blade, and calculated per ISO 16754 unless otherwise specified.

<sup>1</sup>Waste Handler operating weight varies by options selected. Operating weight includes waste blade, fuel tank guards, guarded final drives, chassis bars, striker box, high debris ROPS/FOPS cab, lubricants, coolant, full fuel tank, and 75 kg (165 lb) operator.

<sup>2</sup>Shipping weight includes blade lift cylinders, fuel tank guards, guarded final drives, chassis bars, striker box, high debris ROPS/FOPS cab, lubricants, coolant, and 10% fuel.

<sup>3</sup>Machine height from tip of grouser to top of Product Link Antenna. For Sweeps, add 60 mm (2.36 in) to overall machine height. For forestry sweeps, add 83 mm (3.26 in). With Extreme Service Track Shoes add 12 mm (0.5 in). When Cat Grade with 3D antennas are installed there is no addition to machine height.

<sup>4</sup>Drawbar weight 119 kg (262 lb), 331 kg (730 lb) for each counterweight slab. Counterweights are only recommended with heavier aftermarket blades.



NOTE: Waste LGP model shown.

## Blade

Configuration	6 S LGP (36 in) Landfill	
Capacity (ISO 9246)	12.26 m <sup>3</sup>	16.03 yd <sup>3</sup>
<b>7</b> Width across End Bits	4.063 m	13.33 ft
Width without End Bits	3.917 m	12.85 ft
Width across End Bits (Blade Angled)	—	—
Width without End Bits (Blade Angled)	—	—
Maximum Blade Angle	—	—
<b>8</b> Height	2.034 m	6.67 ft
<b>9</b> Dig Depth	0.600 m	1.97 ft
<b>10</b> Lift Height	1.080 m	3.54 ft
<b>11</b> Maximum Tilt at Blade Corner	0.500 m	1.64 ft
Maximum Tilt Angle	8.8°	—
Pitch Adjustment	±4.2°	—
<b>12</b> Length of Machine (Blade Straight)	5.483 m	17.99 ft
Length of Machine (Blade Angled)	—	—
Weight (Blade)	1528 kg	3,369 lb
Weight (Blade and Push Arms)	2678 kg	5,905 lb



## Waste Handler Features

### Waste Handler Selection

Push Arm dozers can be fully equipped with guarding and seals that provide the added durability ideally suited for pushing trash streams in landfills and transfer stations.

VPAT dozers may also be used in trash streams, but the C-frame blade system makes them better suited to jobs like cell building, cover, and access road/maintenance work.

	D6	D6 LGP 36	D6 LGP VPAT 30	D6 LGP VPAT 36
Cat C9.3B diesel engine with thermal shield and liquid cooled turbo	✓	✓	✓	✓
Engine air pre-cleaner with dust ejection and screen for high debris applications	✓	✓	✓	✓
Reversing hydraulic demand fan	✓	✓	✓	✓
Double reduction planetary final drives, guarded	✓	✓	✓	✓
High Debris cab with impact resistant polycarbonate doors, solid side windows, powered pre-cleaner with Cat Advanced Cabin Filtration	✓	✓	✓	✓
Rearview camera	✓	✓	✓	✓
Quick opening floor plates	✓	✓	✓	✓
Hinged side and rear cab screens	•	•	•	•
Waste undercarriage – HDXL only	✓	✓	✓	✓
Extreme service track shoes with trapezoidal holes	★	★	★	★
Landfill blade with guarded hoses	✓	✓		
150 Amp ducted alternator	✓	✓	✓	✓
Striker bar box	★	★	★	★
Heavy duty sealed bottom guards	✓	✓	✓	✓
Heavy duty sealed quick access bottom guards	★	★		
Fuel tank guard	✓	✓	✓	✓
Premium lights with guards (12 LED)	★	★	★	★
Machine seals for high debris	✓	✓	✓	✓
Front and rear track roller frame mounted striker bars (requires narrow shoes)	•	•		
Warning light	✓	✓	✓	✓
Heavy duty grab handles	✓	✓	✓	✓
Ripper with rear seal package	•	•	•	•
Winch	•	•	•	•

✓ Included/Required in Waste Handler Package

★ Recommended for Waste Handler

• Compatible Waste Handler Attachment

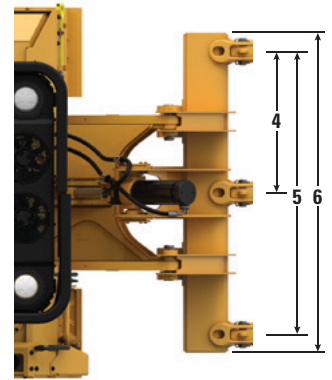
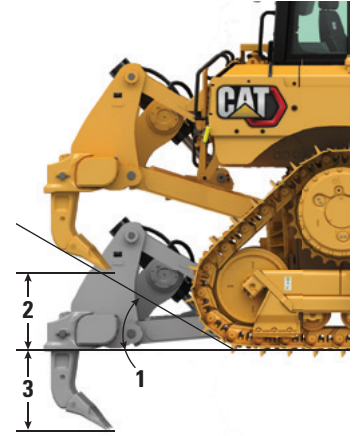
# D6 Waste Handler Specifications

## Ripper

Type	Fixed Parallelogram	
Number of Pockets	3	
<b>1</b> Ramp Angle	31 degrees	
<b>2</b> Maximum Clearance Raised (under tip)	664 mm	26.1 in
<b>3</b> Maximum Penetration	571 mm	22.5 in
<b>4</b> Pocket Spacing	1000 mm	39.4 in
<b>5</b> Shank Gauge	2000 mm	78.8 in
Shank Section	74 mm × 175 mm	2.9 in × 6.9 in
<b>6</b> Overall Beam Width	2190 mm	86 in
Beam Cross Section	219 mm × 304 mm	8.8 in × 12 in
Maximum Penetration Force*	68.8 kN	15,470 lbf
Pryout Force	126 kN	28,350 lbf
Ripper Weight		
With One Shank	1550 kg	3,417 lb
Each Additional Shank	73 kg	161 lb

Specifications based on D6 tractor configuration with Heavy Duty undercarriage, Moderate Service (MS) shoes, and straight ripper shanks.

\*May vary based on configuration and machine weight.



# D6 Waste Handler Specifications

## Winches

Winch model	PA56 (Low Speed)		PA56 (Standard Speed)	
Winch Drive	PTO Mechanical		PTO Mechanical	
Control	Electrical		Electrical	
Operating Weight*	1582 kg	3,487 lb	1582 kg	3,487 lb
Oil Capacity	43.5 L	11.5 gal	43.5 L	11.5 gal
Increased Tractor Length				
Standard/LGP	516 mm	20.4 in	516 mm	20.4 in
LGP (36 in)	365 mm	14.4 in	365 mm	14.4 in
Drum Diameter	254 mm	10 in	254 mm	10 in
Rope Diameter				
Recommended	22 mm	0.88 in	22 mm	0.88 in
Optional	25 mm	1.0 in	25 mm	1.0 in
Drum Working Capacity				
22 mm (0.88 in)	55 m	180 ft	55 m	180 ft
25 mm (1.0 in)	50 m	163 ft	50 m	163 ft
Cable Ferrule Size (O.D. × Length)	54 mm × 67 mm	2.1 in × 2.6 in	54 mm × 67 mm	2.1 in × 2.6 in
Maximum Bare Drum				
Line Pull**	399 kN	89,800 lb	399 kN	89,800 lb
Line Speed***	17 m/min	57 ft/min	33 m/min	107 ft/min
Maximum Full Drum****				
Line Pull**	399 kN	89,800 lb	399 kN	89,800 lb
Line Speed***	29 m/min	94 ft/min	55 m/min	179 ft/min

\*Operating Weight includes winch, mounting hardware, oil, and recommended wire rope.

\*\*Maximum line pull is lesser of calculated line pull at maximum tractor PTO output torque/hydraulic power or catalog breaking strength of maximum size new IWRC IPS wire rope.

\*\*\*Maximum line speed is calculated on-load line speed at maximum tractor engine PTO speed or maximum hydraulic power.

\*\*\*\*Full drum as defined by SAE J1158.

# D6 Waste Handler Specifications

## Track Shoes

	Moderate Service	Extreme Service	Extreme Service Trapezoidal
<b>Heavy Duty Extended Life (HDXL)</b>			
<b>42 Link</b>			
560 mm (22 in)	✓	✓	★
610 mm (24 in)	✓	✓	★
<b>LGP (36 in) – 45 Link</b>			
610 mm (24 in)	✓	✓	★
760 mm (30 in)	✓	✓	★
915 mm (36 in)	✓	✓	★
<b>VPAT – 45 Link</b>			
610 mm (24 in)	✓	✓	
<b>LGP VPAT – 46 Link</b>			
610 mm (24 in)	✓	✓	★
660 mm (26 in)	✓		
710 mm (28 in)	✓		
760 mm (30 in)	✓	✓	★
<b>LGP VPAT (36 in) – 46 Link</b>			
760 mm (30 in)	✓	✓	★
915 mm (36 in)	✓	✓	★

★ Recommended for Waste Handler

✓ Available for Waste Handler

\* Not available in all areas. Please consult your Cat dealer for details.

# D6 Waste Handler Standard and Optional Equipment

## Standard and Optional Equipment

Standard and optional equipment may vary. Consult your Cat dealer for details.

	Standard	Optional		Standard	Optional
<b>POWERTRAIN</b>			<b>OPERATOR ENVIRONMENT</b>		
Fully-automatic 4-speed transmission with lock-up clutch (LUC) torque divider	✓		<b>High debris cab, fully redesigned with integrated ROPS and FOPS, impact resistant polycarbonate doors, solid side windows for improved sealing, with Cat Advanced Cabin Filtration for improved performance and filter life</b>	+	
Differential steering system	✓		Gauge Cluster	✓	
<b>Cat C9.3B diesel engine with thermal shield and liquid cooled turbo</b>	+		Full-color 254 mm (10 inch) liquid crystal touchscreen display		✓
<b>Engine air pre-cleaner with dust ejection and screen for high debris applications</b>	+		Integrated rearview camera	✓	
Double reduction planetary final drives, guarded		†	Joystick control – ARO		✓
Automatic ether starting aid	✓		Adjustable operator controls/armrests	✓	
Electric fuel priming pump	✓		Cloth seat with mechanical adjustable lumbar support	✓	
Electronic parking brake	✓		Deluxe leather heated/ventilated seat with electronic adjustable lumbar support		✓
Engine air filter with electronic service indicator	✓		Cab mounted modular HVAC system with automatic reversing fans. Automatic temperature and blower control with distributed ducting.	✓	
Fuel water separator with electronic service indicator	✓		<b>Cat Advanced Cabin Filtration with powered pre-cleaner with MERV 16, HEPA, and Activated Charcoal options</b>	+	
Jacket water heater, 110V OR 220V based on sales region	✓		Viscous cab mounts for improved ride	✓	
<b>CAT TECHNOLOGY</b>			Entertainment radio with Bluetooth and microphone		✓
Slope Indicate	✓		USB and AUX ports	✓	
Cat Assist with ARO package*		✓	Enhanced Cab Storage Solutions	✓	
Cat Grade 3D ready with Assist package (hardware only)*		✓	Adjustable foot pegs	✓	
Cat Grade 3D with Assist package		✓	<b>Quick opening floor plate</b>	+	
Third Party Grade Control Ready Cab	✓		Screen ready, side and rear	✓	
Compatibility with radios and base stations from Trimble, Topcon, and Leica	✓		Operator presence switch	✓	
Capability to install 3D grade systems from Trimble, Topcon, and Leica	✓				
Product Link – cellular	✓				
Product Link – dual cellular/satellite		✓			
Remote Flash/Troubleshoot	✓				
Grade Connectivity		✓			
Operator ID	✓				
Machine security – passcode	✓				
Machine security – Bluetooth		✓			
Remote Control ready	✓				
Cat Command for Dozing		✓			

\*Refer to page 14 for technology package details.

+Included in Waste Handler package.

†Recommended for Waste Handler.

(continued on next page)

# D6 Waste Handler Standard and Optional Equipment

## Standard and Optional Equipment *(continued)*

Standard and optional equipment may vary. Consult your Cat dealer for details.

	Standard	Optional		Standard	Optional
<b>UNDERCARRIAGE</b>			<b>HYDRAULICS</b>		
Structurally improved track roller frame	✓		Load sensing hydraulics – dozer lift and tilt	✓	
Undercarriage with 8 bottom rollers	✓		Independent steering hydraulics	✓	
<b>Waste Undercarriage, HDXL ONLY</b>	+		Ripper ready rear hydraulics	✓	
Heavy Duty (HDXL with DuraLink™)	✓		Ripper and winch ready rear hydraulics		✓
<b>Extreme Service track shoes with trapezoidal holes</b>	+		Single axis ripper control	✓	
Carrier roller	✓		Dual axis ripper/winch control		✓
Hydraulically adjustable track	✓		Hydraulic automatically reversing, zero speed capable cooling fan	✓	
Replaceable sprocket rim segments	✓		Electronic Hydraulic lockout switch	✓	
<b>BLADES</b>			<b>ELECTRICAL</b>		
Semi-Universal, ARO mounts		✓	Standard Lights – 4 LED light package	✓	
Semi-Universal, LGP with ARO mounts		✓	Optional Lights – 6 LED light package		✓
<b>Semi-Universal, Waste</b>	+		Premium Lights – 12 LED light package		✓
<b>Semi-Universal, LGP Waste</b>	+		Backup alarm	✓	
Straight blade, LGP with ARO mounts		✓	<b>Integrated beacon warning light (does not impact shipping height)</b>	+	
<b>Straight blade, LGP Waste</b>	+		Communication radio ready kit		✓
VPAT, ARO mounts		✓	Converter: 15 Amp, 12V outlet	✓	
VPAT, LGP with ARO mounts		✓	Diagnostic connector	✓	
Angle blade		N Am only	Forward warning horn	✓	
Cat Performance cutting edges		Dealer only	Fuse panel and main power relay located inside cab	✓	

+Included in Waste Handler package.

\*Recommended for Waste Handler.

*(continued on next page)*

# D6 Waste Handler Standard and Optional Equipment

## Standard and Optional Equipment (continued)

Standard and optional equipment may vary. Consult your Cat dealer for details.

	Standard	Optional		Standard	Optional
<b>SERVICE AND MAINTENANCE</b>			<b>ATTACHMENTS</b>		
30-minute cab removal		✓	Drawbar		✓
Ecology drains	✓		High lift multi-shank ripper with straight or curved shanks		✓
Ecology drains with high speed oil power train and engine oil change		✓	Lightweight rear tow point		✓
Ground level service center with remote electrical disconnect, access light, secondary shutdown switch and hour meter	✓		Striker bar box	✓	
Fuel tank, 341 L (90 gal)	✓		Counterweights (not recommended unless using heavier aftermarket blades)		✓
Fuel tank, 341 L (90 gal), fast fill ready		✓	PACCAR PA56 winch, low speed PTO		✓
Wiggins style fast fill nozzle		✓	PACCAR PA85 winch, variable speed hydraulic		✓
Mounting provisions for grease gun, shovel, and fire extinguisher	✓		PACCAR PA56 winch, standard speed PTO		Dealer only
Perforated radiator doors, louvered and hinged	✓		Allied H6H winch, variable speed hydraulic		Dealer only
Rear access ladder	✓		Fairlead Assembly; 3-roller, fits PA55, PA56, and PA85 winches		✓
Rear work light		✓	Retrofit kit (4th roller); fits PA55, PA56, and PA85 winches		✓
Removable engine enclosures, perforated and hinged, with under hood work light	✓		<b>GUARDING AND SCREENS</b>		
S-O-S <sup>SM</sup> sampling ports	✓		<b>Heavy duty sealed and hinged bottom guards</b>	+	
Maintenance free equalizer bar	✓		Heavy duty sealed quick access bottom guards**		Push Arm only
Certified ISO 14567 tie off points (3)	✓		<b>Heavy duty grab handles</b>	+	
Vandalism protection for fluid compartments and battery box	✓		Open Sweeps guarding		✓
Dedicated shipping tie downs, rear	✓		Forestry Sweeps guarding with full canopy		✓
<b>BATTERIES, STARTERS, ALTERNATORS AND FLUIDS</b>			Hinged rear screen		✓
<b>150 Amp ducted alternator</b>	+		Hinged side screens		✓
Heavy duty batteries, two maintenance-free 12V (1,400 CCA) (24V system)	✓		<b>Fuel tank guard (with or without fast fill)</b>	+	
Heavy duty, 24V starter	✓		Guards for premium lights, front and side		†
Extended Life Engine coolant, -37° C (-35° F)	✓		<b>Machine seals for high debris</b>	+	
Extended Life Arctic engine coolant, -51° C (-60° F)		✓	Front and rear striker bars		Dealer only
			Rear guard with seals for non striker box and winch applications		†

+Included in Waste Handler package.

†Recommended for Waste Handler.

\*\*Please check with your Cat dealer for availability.



# D6

## Heavy Duty/Forestry

***Take on the demands of land clearing and forestry work with factory-installed equipment designed to help protect the operator and the machine in harsh applications.***

### **Next Generation Performance**

- Fully automatic 4-speed transmission continuously adjusts for optimal efficiency and power to the ground.
- Maneuverability and power give you more agility and faster cycle times.
- Ease of operation – automatically optimizes for the application with no need to shift gears.

### **Equipped for the Job**

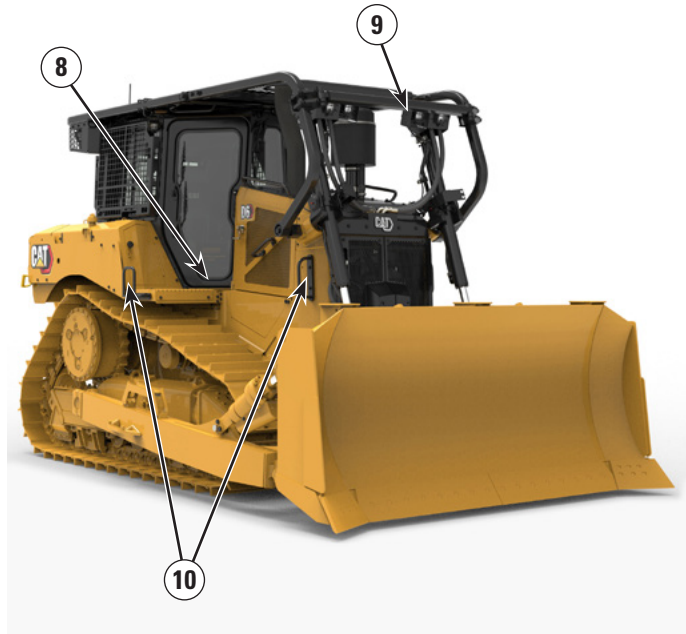
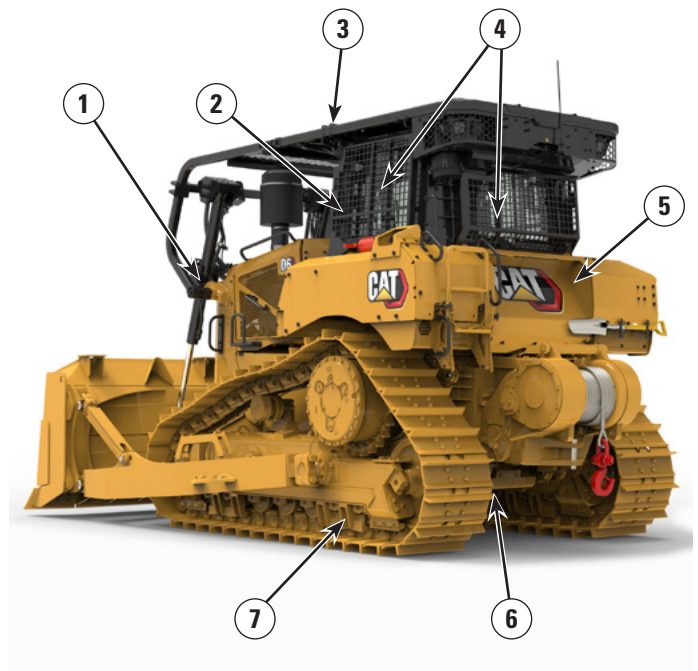
- Single plane cooling system with automatic reversing fan aids cleanout. High debris engine air filtration system extends filter life.
- Forestry cab with impact resistant polycarbonate doors for added impact resistance without the use of door screens for unobstructed visibility.
- Forestry (closed) sweeps provide further protection for the operator and machine with an enclosed canopy over the cab and a perforated canopy over the hood for protection while allowing upward visibility. Optional open sweeps are also available for applications where a canopy is not desired.
- Side and rear screens help further protect the operator and machine from debris. Hinged screens provide easy access to windows for cleaning and maintenance.
- High debris seals offer additional protection around fenders, fuel tank, radiator guard and rear hood support. Provides a seal across the top, rear of the case to prevent high debris entry.
- Heavy duty bottom guards and fuel tank guard to help shield major machine components. Sealed bottom guards available on push arm machines.
- 12 premium LED lights with light guards provide 360-degree light coverage.
- Heavy Duty Extended Life (HDXL) undercarriage. Track bushings can be turned and re-sealed mid-life. Press-fit bushings and PPR2 pin retention are particularly well suited for impact applications like forestry.
- Heavy duty grab handles aid access/egress.



# D6 Heavy Duty/Forestry Specifications

## D6 Heavy Duty/Forestry Features

- 1) Single plane cooling system with automatic reversing fan aids cleanout. High debris engine air filtration system extends filter life.
- 2) Forestry cab with impact resistant polycarbonate doors for added impact resistance without the use of door screens for unobstructed visibility.
- 3) Forestry (closed) sweeps provide further protection for the operator and machine with an enclosed canopy over the cab and a perforated canopy over the hood for protection while allowing upward visibility. Optional open sweeps are also available for applications where a canopy is not desired.
- 4) Side and rear screens help further protect the operator and machine from debris. Hinged screens provide easy access to windows for cleaning and maintenance.



- 5) High debris seals offer additional protection around fenders, fuel tank, radiator guard and rear hood support. Provides a seal across the top, rear of the case to prevent debris entry.
- 6) Heavy duty bottom guards and fuel tank guard to help shield major machine components. Sealed bottom guards available on push arm machines.
- 7) Heavy Duty Extended Life (HDXL) undercarriage. Track bushings can be turned and re-sealed mid-life. Press-fit bushings and PPR2 pin retention are particularly well suited for impact applications like forestry.
- 8) Quick access cab floor option offers tool-less access to the floor plate opening.
- 9) 12 premium LED lights with light guards provide 360-degree light coverage.
- 10) Heavy duty grab handles aid access/egress.

# D6 Heavy Duty/Forestry Specifications

## Engine

Engine Model	Cat C9.3B	
Emissions	Brazil MAR-1 and UN ECE R96 Stage IIIA emission standards, equivalent to U.S. EPA Tier 3/EU Stage IIIA	
Net Power – 2,200 rpm		
ISO 9249/SAE J1349	161 kW	215 hp
ISO 9249 (DIN)	219 mhp	
Engine Power – 1,200 rpm		
ISO 14396	187 kW	251 hp
ISO 14396 (DIN)	254 mhp	
Gross Power: SAE J1995:2014	190 kW	255 hp
Bore	115 mm	4.5 in
Stroke	149 mm	5.9 in
Displacement	9.3 L	567 in <sup>3</sup>

- The Cat C9.3B engine features a high pressure common rail fuel system, simplified engine system electronics, and simplified air system through the removal of the previously used exhaust gas recirculation (EGR) system.
- Net power advertised is the power available at the engine flywheel when the engine is equipped with a fan, air cleaner, clean emissions module and alternator.
- Advertised power is tested per the specified standard in effect at the time of manufacture.
- No derating required up to 2286 m (7,500 ft). Above this, automatic derating occurs.
- Cat engines are compatible with diesel fuel blended with the following lower-carbon intensity fuels\*\* up to:
  - ✓ 20% biodiesel FAME (fatty acid methyl ester)\*
  - ✓ 100% renewable diesel, HVO (hydrogenated vegetable oil) and GTL (gas-to-liquid) fuels

Refer to guidelines for successful application. Please consult your Cat dealer or “Caterpillar Machine Fluids Recommendations” (SEBU6250) for details.

\*For use of blends higher than 20% biodiesel, consult your Cat dealer.

\*\*Tailpipe greenhouse gas emissions from lower-carbon intensity fuels are essentially the same as traditional fuels.

## Fluid/Refill Capacities

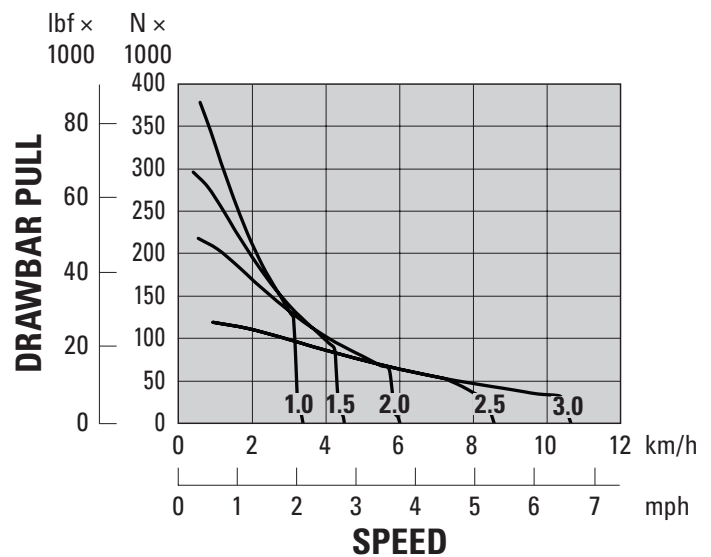
Fuel Tank	341 L	90 gal
Cooling System	63 L	16.6 gal
Engine Crankcase	24.5 L	6.5 gal
Power Train Oil	148 L	39.1 gal
Final Drives (each)	18.2 L	4.8 gal
Roller Frames (each)	65-85 L	17.2-22.5 gal
Pivot Shaft Compartment	2.8 L	0.74 gal
Hydraulic Tank Oil	60 L	15.8 gal
Hydraulic System	77 L	20.3 gal

## Transmission

1.0 Forward	3.3 kph	2.1 mph
1.5 Forward	4.5 kph	2.8 mph
2.0 Forward	6.0 kph	3.7 mph
2.5 Forward	8.5 kph	5.3 mph
3.0 Forward	10.7 kph	6.6 mph
1.0 Reverse	3.1 kph	1.9 mph
1.5 Reverse	4.0 kph	2.5 mph
2.0 Reverse	5.8 kph	3.6 mph
2.5 Reverse	8.0 kph	5.0 mph
3.0 Reverse	6.7 kph	6.7 mph

## Drawbar Pull

1.0 Forward	422 kN	94,869 lbf
1.5 Forward	311 kN	69,916 lbf
2.0 Forward	230 kN	51,706 lbf
2.5 Forward	126 kN	28,326 lbf
3.0 Forward	126 kN	28,326 lbf



**NOTE:** Usable pull will depend on traction and weight of machine.

# D6 Heavy Duty/Forestry Specifications

## Hydraulic Controls – Maximum Operating Flows

	1,900 rpm engine speed*	
Implement Pump Maximum Flow	212 L/min	56 gal/min
Steering Pump Maximum Flow	198 L/min	52 gal/min
Fan Pump Flow at Maximum Fan (1,550 rpm)	42 L/min	11 gal/min
Fan Pump Flow at Maximum Fan (1,625 rpm)	—	—

\*Engine speed varies with load and travel speed. A high idle/low working load speed shown.

## Hydraulic Controls – Maximum Operating Pressures

Implement Relief*	27 600 ± 500 kPa	4,000 ± 73 psi
Steering – (89 cc pump)		
Electronic Relief	42 500 ± 1000 kPa	6,168 ± 145 psi
System Maximum Relief	47 800 ± 1000 kPa	6,938 ± 145 psi

\*Implement relief pressure increased over prior model D6 tractors. Consult with your dealer prior to using older vintage or third party implements.

# D6 Heavy Duty/Forestry Specifications

## D6 Heavy Duty/Forestry Dimensions

Operating Weight <sup>1</sup>	23 030 kg	50,772 lb
Shipping Weight <sup>2</sup>	20 080 kg	44,269 lb
Ground Pressure (ISO 16754)	57 kPa	8.2 psi
Undercarriage (Standard)	42 Section with 8 Bottom Rollers	
<b>1</b> Track Gauge	1.930 m	6'4"
<b>2</b> Width of Maximum Track Shoe	0.610 m	24 in
<b>3</b> Width over Tracks	2.540 m	8'4"
Width over Trunnions	2.692 m	8'10"
<b>4</b> Length of Track on Ground	2.964 m	9'8"
Ground Contact Area (ISO 16754)	3.992 m <sup>2</sup>	42.97 ft <sup>2</sup>
Track Pitch	0.2028 m	7.9 in
Grouser Height (Moderate Service)	0.065 m	2.6 in
Ground Clearance	0.361 m	14.2 in
Oscillation at Front Idler	0.103 m	4.0 in
<b>5</b> Machine Height <sup>3</sup>	3.188 m	10'6"
<b>6</b> Length of Machine without Blade	4.730 m	15'6"
Add the following to the total length of the machine when these attachments are installed:		
Winch	441 mm	17.4 in
Ripper	1179 mm	46.4 in
Drawbar or Counterweight <sup>4</sup>	249 mm	9.8 in
Striker Box	478 mm	18.8 in

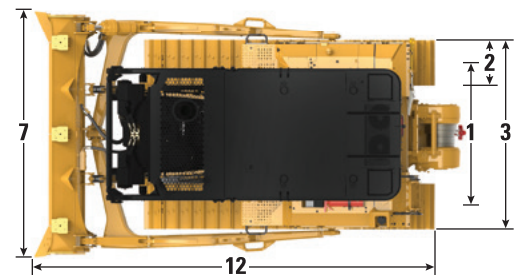
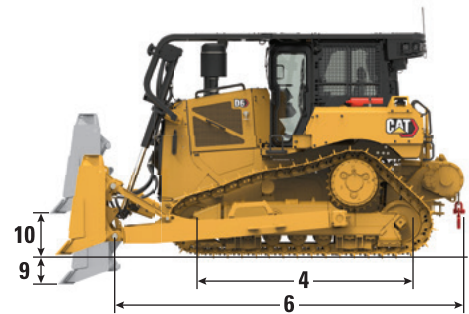
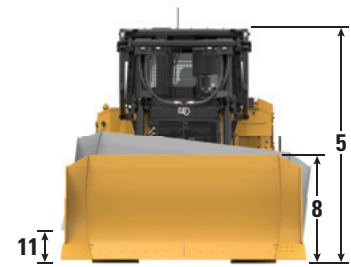
All dimensions above with HDXL undercarriage with Moderate Service shoes of maximum width for configuration, 6 SU blade, forestry options, and calculated per ISO 16754 unless otherwise specified.

<sup>1</sup>Operating weight includes blade, lubricants, coolant, full fuel tank, ROPS/FOPS cab, drawbar, and 75 kg (165 lb) operator. Reference ripper and winch sections for those specifications.

<sup>2</sup>Shipping weight includes blade lift cylinders, lubricants, coolant, 10% fuel, ROPS/FOPS cab, and drawbar.

<sup>3</sup>Machine height from tip of grouser to top of Product Link Antenna. For Sweeps, add 60 mm (2.36 in) to overall machine height. For forestry sweeps, add 83 mm (3.26 in). With Extreme Service Track Shoes add 12 mm (0.5 in). When Cat Grade with 3D antennas are installed there is no addition to machine height.

<sup>4</sup>Drawbar weight 119 kg (262 lb), 331 kg (730 lb) for each counterweight slab. Counterweights are only recommended with heavier aftermarket blades.



*NOTE: Heavy Duty/Forestry model with optional sweeps shown.*

## Blades

Configuration	6 SU		6A	
Capacity (ISO 9246)	5.7 m <sup>3</sup>	7.5 yd <sup>3</sup>	4.2 m <sup>3</sup>	5.5 yd <sup>3</sup>
<b>7</b> Width across End Bits	3.312 m	10.87 ft	4.389 m	14.40 ft
Width without End Bits	3.246 m	10.65 ft	4.250 m	13.94 ft
Width across End Bits (Blade Angled)	N/A		3.982 m	13.06 ft
Width without End Bits (Blade Angled)	N/A		3.858 m	12.66 ft
Maximum Blade Angle	N/A		25 degrees	
<b>8</b> Height	1.408 m	4.62 ft	1.150 m	3.77 ft
<b>9</b> Dig Depth	0.502 m	19.8 in	0.595 m	23.4 in
<b>10</b> Lift Height	1.180 m	46.5 in	1.084 m	42.7 in
<b>11</b> Maximum Tilt at Blade Corner	0.564 m	22.2 in	0.599 m	23.6 in
Maximum Tilt Angle	9.8 degrees		7.8 degrees	
Pitch Adjustment	±4.2 degrees		N/A	
<b>12</b> Length of Machine (Blade Straight)	5.436 m	17.83 ft	5.377 m	17.64 ft
Length of Machine (Blade Angled)	N/A		6.418 m	21.06 ft
Weight (Blade)	1385 kg	3,053 lb	1265 kg	2,789 lb
Weight (Blade and Push Arms)	2620 kg	5,777 lb	3406 kg	7,509 lb

Cat FirstCut™ cutting edges are available for Semi-Universal (SU) blades. FirstCut edges provide superior penetration in tough compacted, rocky or frozen soils resulting in improved payloads and productivity. Consult with your Cat dealer for more benefits and details.

# D6 Heavy Duty/Forestry Specifications

## D6 Heavy Duty/Forestry LGP VPAT (30 in) Dimensions

Operating Weight <sup>1</sup>	23 745 kg	52,349 lb
Shipping Weight <sup>2</sup>	21 890 kg	48,259 lb
Ground Pressure (ISO 16754)	42 kPa	6.0 psi
Undercarriage (Standard)	46 Section with 8 Bottom Rollers	
Undercarriage (Optional)	46 Section with 10 Bottom Rollers	
<b>1</b> Track Gauge	2.286 m	7'6"
<b>2</b> Width of Maximum Track Shoe	0.760 m	30 in
<b>3</b> Width over Tracks	3.046 m	10'0"
<b>4</b> Length of Track on Ground	3.355 m	11'0"
Ground Contact Area (ISO 16754)	5.591 m <sup>2</sup>	60.18 ft <sup>2</sup>
Track Pitch	0.2028 m	7.9 in
Grouser Height (Moderate Service)	0.065 m	2.6 in
Ground Clearance	0.395 m	15.6 in
Oscillation at Front Idler	0.121 m	4.8 in
<b>5</b> Machine Height <sup>3</sup>	3.238 m	10'7"
<b>6</b> Length of Machine without Blade	5.134 m	16'10"
Add the following to the total length of the machine when these attachments are installed:		
Winch	416 mm	16.4 in
Ripper	1154 mm	45.4 in
Drawbar or Counterweight <sup>4</sup>	224 mm	8.8 in
Striker Box	453 mm	17.8 in

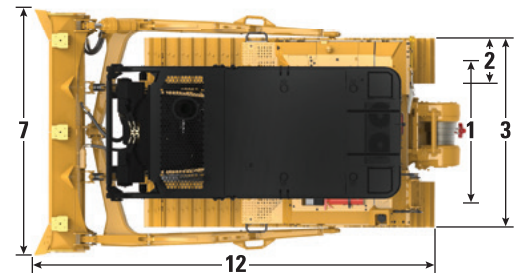
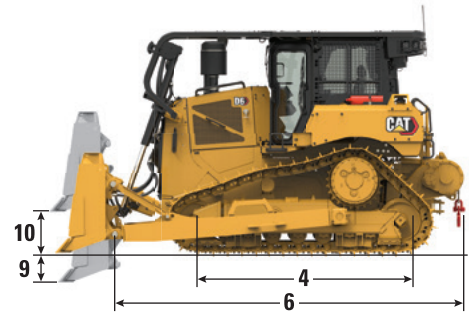
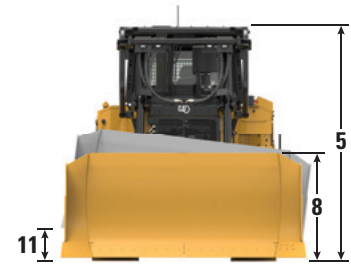
All dimensions above with HDXL undercarriage with Moderate Service shoes of maximum width for configuration, VPAT blade, forestry options, and calculated per ISO 16754 unless otherwise specified.

<sup>1</sup>Operating weight includes blade, lubricants, coolant, full fuel tank, ROPS/FOPS cab, drawbar, and 75 kg (165 lb) operator. Reference ripper and winch sections for those specifications.

<sup>2</sup>Shipping weight includes blade lift cylinders, C-frame, lubricants, coolant, 10% fuel, ROPS/FOPS cab, and drawbar.

<sup>3</sup>Machine height from tip of grouser to top of Product Link Antenna. For Sweeps, add 60 mm (2.36 in) to overall machine height. For forestry sweeps, add 83 mm (3.26 in). With Extreme Service Track Shoes add 12 mm (0.5 in). When Cat Grade with 3D antennas are installed there is no addition to machine height.

<sup>4</sup>Drawbar weight 119 kg (262 lb), 331 kg (730 lb) for each counterweight slab. Counterweights are only recommended with heavier aftermarket blades.



*NOTE: Heavy Duty/Forestry model with optional sweeps shown.*

## Blade

Configuration	6 VPAT LGP (30 in)	
Capacity (ISO 9246)	4.5 m <sup>3</sup>	5.9 yd <sup>3</sup>
<b>7</b> Width across End Bits	4.000 m	13.12 ft
Width without End Bits	3.890 m	12.76 ft
Width across End Bits (Blade Angled)	3.655 m	11.99 ft
Width without End Bits (Blade Angled)	3.554 m	11.66 ft
Maximum Blade Angle	24.1 degrees	
<b>8</b> Height	1.312 m	4.30 ft
<b>9</b> Dig Depth	0.698 m	27.5 in
<b>10</b> Lift Height	1.131 m	44.5 in
<b>11</b> Maximum Tilt at Blade Corner	0.625 m	24.6 in
Maximum Tilt Angle	9 degrees	
Pitch Adjustment	+3.1/-2.9 degrees	
<b>12</b> Length of Machine (Blade Straight)	5.662 m	18.58 ft
Length of Machine (Blade Angled)	6.430 m	21.10 ft
Weight (Blade)	1520 kg	3,351 lb

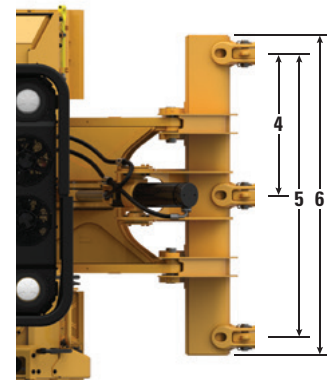
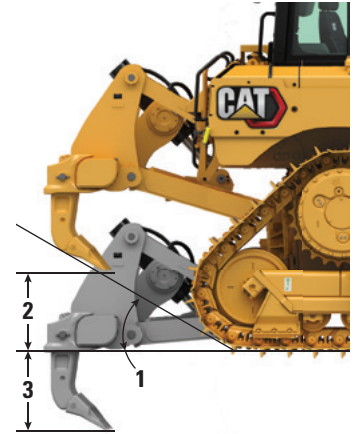
# D6 Heavy Duty/Forestry Specifications

## Ripper

Type	Fixed Parallelogram	
Number of Pockets	3	
<b>1</b> Ramp Angle	31 degrees	
<b>2</b> Maximum Clearance Raised (under tip)	664 mm	26.1 in
<b>3</b> Maximum Penetration	571 mm	22.5 in
<b>4</b> Pocket Spacing	1000 mm	39.4 in
<b>5</b> Shank Gauge	2000 mm	78.8 in
Shank Section	74 mm × 175 mm	2.9 in × 6.9 in
<b>6</b> Overall Beam Width	2190 mm	86 in
Beam Cross Section	219 mm × 304 mm	8.8 in × 12 in
Maximum Penetration Force*	68.8 kN	15,470 lbf
Pryout Force	126 kN	28,350 lbf
Ripper Weight		
With One Shank	1550 kg	3,417 lb
Each Additional Shank	73 kg	161 lb

Specifications based on D6 tractor configuration with Heavy Duty undercarriage, MS shoes, and straight ripper shanks.

\*May vary based on configuration and machine weight.



# D6 Heavy Duty/Forestry Specifications

## Winches

Winch model	PA56 (Low Speed)		PA56 (Standard Speed)	
	PTO Mechanical		PTO Mechanical	
Winch Drive	PTO Mechanical		PTO Mechanical	
Control	Electrical		Electrical	
Operating Weight*	1582 kg	3,487 lb	1582 kg	3,487 lb
Oil Capacity	43.5 L	11.5 gal	43.5 L	11.5 gal
Increased Tractor Length				
Standard/LGP	516 mm	20.4 in	516 mm	20.4 in
LGP (36 in)	365 mm	14.4 in	365 mm	14.4 in
Drum Diameter	254 mm	10 in	254 mm	10 in
Rope Diameter				
Recommended	22 mm	0.88 in	22 mm	0.88 in
Optional	25 mm	1.0 in	25 mm	1.0 in
Drum Working Capacity				
22 mm (0.88 in)	55 m	180 ft	55 m	180 ft
25 mm (1.0 in)	50 m	163 ft	50 m	163 ft
Cable Ferrule Size (O.D. × Length)	54 mm × 67 mm	2.1 in × 2.6 in	54 mm × 67 mm	2.1 in × 2.6 in
Maximum Bare Drum				
Line Pull**	399 kN	89,800 lb	399 kN	89,800 lb
Line Speed***	17 m/min	57 ft/min	33 m/min	107 ft/min
Maximum Full Drum****				
Line Pull**	399 kN	89,800 lb	399 kN	89,800 lb
Line Speed***	29 m/min	94 ft/min	55 m/min	179 ft/min

\*Operating Weight includes winch, mounting hardware, oil, and recommended wire rope.

\*\*Maximum line pull is lesser of calculated line pull at maximum tractor PTO output torque/hydraulic power or catalog breaking strength of maximum size new IWRC IPS wire rope.

\*\*\*Maximum line speed is calculated on-load line speed at maximum tractor engine PTO speed or maximum hydraulic power.

\*\*\*\*Full drum as defined by SAE J1158.

# D6 Heavy Duty/Forestry Specifications

## Track Shoes

Some track shoes not available in all regions. Please consult your Cat dealer for details.

	Moderate Service	Extreme Service	Extreme Service Trapezoidal	Self Cleaning	Quad/Quad Ready
<b>Heavy Duty Extended Life (HDXL)</b>					
<b>42 Link</b>					
560 mm (22 in)	✓	✓	✓		
610 mm (24 in)	✓	✓	✓		
610 mm (24 in)			Heavy Duty		
<b>LGP – 42 Link</b>					
610 mm (24 in)	✓	✓			
760 mm (30 in)	✓	✓	✓		
<b>LGP (36 in) – 45 Link</b>					
610 mm (24 in)	✓	✓	✓		
760 mm (30 in)	✓	✓	✓		
915 mm (36 in)	✓	✓	✓		✓
1000 mm (39 in)				HD/HDXL	
<b>VPAT – 45 Link</b>					
610 mm (24 in)	✓	✓			
<b>LGP VPAT – 46 Link</b>					
610 mm (24 in)	✓	✓	✓		
660 mm (26 in)	✓				
710 mm (28 in)	✓				
760 mm (30 in)	✓	✓	✓		
<b>LGP VPAT (36 in) – 46 Link</b>					
760 mm (30 in)	✓	✓	✓		
915 mm (36 in)	✓	✓	✓		✓
<b>Cat Abrasion</b>					
<b>42 Link</b>					
560 mm (22 in)	✓	✓			
610 mm (24 in)	✓	✓			
<b>LGP – 42 Link</b>					
610 mm (24 in)	✓				
760 mm (30 in)	✓	✓			
<b>LGP (36 in) – 45 Link</b>					
760 mm (30 in)	✓	✓			
915 mm (36 in)	✓	✓			
<b>VPAT – 45 Link</b>					
610 mm (24 in)	✓	✓			
<b>LGP VPAT – 46 Link</b>					
660 mm (26 in)	✓				
710 mm (28 in)	✓				
760 mm (30 in)	✓	✓			
<b>LGP VPAT (36 in) – 46 Link</b>					
760 mm (30 in)	✓	✓			
915 mm (36 in)	✓	✓			



## Air Conditioning System

The air conditioning system on this machine contains the fluorinated greenhouse gas refrigerant R134a (Global Warming Potential = 1430). The system contains 1.36 kg (2.99 lb) of refrigerant which has a CO<sub>2</sub> equivalent of 1.946 metric tonnes (2.145 tons).

## Advanced Cabin Filtration

### Operator Cabin

- Distributed HVAC ducting with automatic temperature control and blower speed provides ultimate operator comfort with less user input.
- Reduced maintenance of the condenser core with automatic reversing fans.
- Cat Advanced Cabin Filtration is standard.

### Cat Advanced Cabin Filtration

- Operator protection from respirable particulate (0.3-10 micron size).
- Sustainably pressurized cab (US Silica compliant).
- Reduced maintenance with longer life, high efficiency filters.
- Protection for all cabin components: electronics, etc.
- Helps meet U.S. Occupational Safety and Health Administration Silica Rule Table 1 requirements for operator cabs.
- Multi-tiered filter offerings for optional efficiency upgrades. Contact Cat dealer for availability.
  - MERV 16 – Standard Equipment
  - HEPA
  - Activated Carbon + HEPA
  - ABEK1 + HEPA

## Standards

### Rollover Protective Structure (ROPS)/ Falling Object Protective Structure (FOPS)

- ROPS meets the following criteria: ISO 3471:2008.
- FOPS meets the following criteria: ISO 3449:2005 Level II.

### Brakes

- Brakes meet the standard ISO 10265:2008.

### Sound Level Information

Hearing protection may be needed when the machine is operated with an open operator station, in a noisy environment, with a cab that is not properly maintained, or when the doors and windows are open for extended periods of time.

	Sound Level	Test Method
Operator Sound Pressure Level	77 dB(A)*	“ISO 6396:2008” <sup>(1)</sup>
Exterior Sound Power Level	113 dB(A)	“ISO 6395:2008” <sup>(2)</sup>
	111 dB(A)*	“ISO 6395:1988” <sup>(2)</sup>

\*Including machines required to meet applicable regional regulations of Ukraine, United Kingdom, and Countries that Adopt the “EU Directives”; or machines equipped with the sound-suppression package.

<sup>(1)</sup>The measurement was conducted at 70% of the maximum engine cooling fan speed. The sound level may vary at different engine cooling fan speeds. The measurement was conducted with the cab doors and the cab windows closed. The cab was properly installed and maintained.

<sup>(2)</sup>The measurement was conducted at 70% of the maximum engine cooling fan speed. The sound level may vary at different engine cooling fan speeds.

The sound levels listed above include both measurement uncertainty and uncertainty due to production variation.

# D6 Heavy Duty/Forestry Standard and Optional Equipment

## Standard and Optional Equipment

Standard and optional equipment may vary. Consult your Cat dealer for details.

	Standard	Optional		Standard	Optional
<b>POWER TRAIN</b>			<b>CAT TECHNOLOGY (continued)</b>		
Fully-automatic 4-speed Transmission with Lock Up Clutch (LUC) torque divider	✓		Product Link, Cellular	✓	
Differential Steering System	✓		Product Link – Dual Cellular/Satellite		✓
Cat C9.3B diesel engine	✓		Remote Flash/Troubleshoot	✓	
Engine air pre-cleaner with dust ejection	✓		Grade Connectivity		✓
Engine air pre-cleaner with dust ejection and screen for high debris applications		‡	Operator ID	✓	
Double reduction planetary final drives	✓		Machine Security – Passcode	✓	
Double reduction planetary final drives, guarded		✓	Machine Security – Bluetooth		✓
Automatic ether starting aid	✓		Remote Control Ready	✓	
Electric fuel priming pump	✓		Cat Command for Dozing		✓
Electronic parking brake	✓		<b>OPERATOR ENVIRONMENT</b>		
Engine air filter with electronic service indicator	✓		Fully redesigned Heavy Duty cab with Integrated ROPS and FOPS, impact resistant polycarbonate doors, sliding windows, with Cat Advanced Cabin Filtration		✓
Fuel water separator with electronic service indicator	✓		Full-color 254 mm (10 inch) liquid crystal touchscreen display	✓	
Jacket water heater, 110V OR 220V based on sales region	✓		Integrated rearview camera	✓	
Diesel Exhaust Fluid (DEF) System – Electronic fill indicator, heated lines/tank	✓		Joystick control – ARO		✓
<b>CAT TECHNOLOGY</b>			Adjustable operator controls/armrests	✓	
Slope Indicate	✓		Cloth seat with mechanical adjustable lumbar support	✓	
Cat Assist with ARO package*		✓	Deluxe leather heated/ventilated seat with electronic adjustable lumbar support		✓
Cat Grade 3D ready with Assist package (hardware only)*			Cab mounted modular HVAC system with automatic reversing fans. Automatic temperature and blower control with distributed ducting.	✓	
Cat Grade 3D with Assist Package*		✓	Cat Advanced Cabin Filtration with powered pre-cleaner with MERV 16, HEPA, and Activated Charcoal options		✓
Third Party Grade Control Ready Cab	✓		Viscous cab mounts for improved ride	✓	
Compatibility with radios and base stations from Trimble, Topcon, and Leica	✓		Entertainment radio with Bluetooth and microphone	✓	
Capability to install 3D grade systems from Trimble, Topcon, and Leica	✓		USB and AUX ports	✓	
*Refer to page 14 for technology package details.			Enhanced cab storage solutions	✓	
			Adjustable foot pegs	✓	
			Quick opening floor plate		✓
			Screen ready, side and rear	✓	
			Operator presence switch	✓	

‡Recommended for Forestry/Heavy Duty.

(continued on next page)

# D6 Heavy Duty/Forestry Standard and Optional Equipment

## Standard and Optional Equipment *(continued)*

Standard and optional equipment may vary. Consult your Cat dealer for details.

	Standard	Optional		Standard	Optional
<b>UNDERCARRIAGE</b>			<b>HYDRAULICS</b>		
Structurally improved track roller frame designed to allow conversion between HD and S1	✓		Load sensing hydraulics – dozer lift and tilt	✓	
Undercarriage with 8 bottom rollers	✓		Independent steering hydraulics	✓	
Undercarriage with 10 bottom rollers for fine grading applications		✓	Ripper and winch ready rear hydraulics		✓
Partially guided undercarriage		✓	Single axis ripper control	✓	
Fully guided undercarriage		✓	Dual axis ripper/winch control		✓
Heavy Duty (HDXL with DuraLink™)	✓		Hydraulic automatically reversing, zero speed capable cooling fan	✓	
Cat Abrasion track		✓	Electronic Hydraulic lockout switch	✓	
Moderate service track shoes (see chart on page 46)	✓		<b>ELECTRICAL</b>		
Extreme service track shoes (see chart on page 46)		✓	Standard Lights – 6 LED light package	+	
Carrier roller	✓		Premium Lights – 12 LED light package with guards	✓	
Hydraulically adjustable track	✓		Backup alarm	✓	
Replaceable sprocket rim segments	✓		Integrated beacon warning light (does not impact shipping height)		✓
<b>BLADES</b>			Communication radio ready kit	+	
Semi-Universal, ARO mounts		✓	Converter: 15 Amp, 12V outlet	✓	
Semi-Universal, LGP with ARO mounts		✓	Diagnostic connector	✓	
Straight blade, LGP with ARO mounts		✓	Forward warning horn	✓	
VPAT, ARO mounts		✓	Fuse panel and main power relay located inside cab	✓	
VPAT, LGP with ARO mounts		✓			
Cat Performance cutting edges		Dealer only			

+Included in Heavy Duty/Forestry package.

*(continued on next page)*

# D6 Heavy Duty/Forestry Standard and Optional Equipment

## Standard and Optional Equipment (continued)

Standard and optional equipment may vary. Consult your Cat dealer for details.

	Standard	Optional		Standard	Optional
<b>SERVICE AND MAINTENANCE</b>			<b>ATTACHMENTS</b>		
30-minute cab removal	✓		Drawbar	✓	
Ecology drains	✓		High lift multi-shank ripper with straight or curved shanks		✓
Ecology drains with high speed oil power train and engine oil change		✓	Lightweight rear tow point		✓
Ground level service center with remote electrical disconnect, access light, secondary shutdown switch and hour meter	✓		Striker bar box		✓
Fuel tank, 341 L (90 gal)	✓		Counterweights (not recommended unless using heavier aftermarket blades)		✓
Fuel tank, 341 L (90 gal), fast fill ready		✓	PACCAR PA56 winch, low speed PTO		✓
Wiggins style fast fill nozzle		✓	PACCAR PA85 winch, variable speed hydraulic		✓
Mounting provisions for grease gun, shovel, and fire extinguisher	✓		PACCAR PA56 winch, standard speed PTO		Dealer only
Perforated radiator doors, louvered and hinged	✓		Allied H6H winch, variable speed hydraulic		Dealer only
Rear access ladder	✓		Fairlead Assembly; 3-roller, fits PA55, PA56, and PA85 winches		✓
Rear work light		✓	Retrofit kit (4th roller); fits PA55, PA56, and PA85 winches		✓
Removable engine enclosures, perforated and hinged, with under hood work light	✓		<b>GUARDING AND SCREENS</b>		
S-O-S <sup>SM</sup> sampling ports	✓		<b>Heavy duty sealed and hinged bottom guards</b>	+	
Maintenance free equalizer bar	✓		Heavy duty sealed quick access bottom guards**		Push Arm only
Certified ISO 14567 tie off points (3)	✓		<b>Heavy duty grab handles</b>	+	
Vandalism protection for fluid compartments and battery box	✓		Open Sweeps guarding		✓
Dedicated shipping tie downs, rear	✓		<b>Forestry Sweeps guarding with full canopy</b>	+	
<b>BATTERIES, STARTERS, ALTERNATORS AND FLUIDS</b>			<b>Hinged rear screen</b>	+	
150 Amp alternator	✓		<b>Hinged side screens</b>	+	
150 Amp ducted alternator		✓	Fuel tank guard (with or without fast fill)		‡
Heavy duty batteries, two maintenance-free 12V (1,400 CCA) (24V system)	✓		Guards for premium lights, front and side	✓	
Heavy duty, 24V starter	✓		Machine seals for high debris		‡
Extended Life Engine coolant, -37° C (-35° F)	✓		Front and rear striker bars		Dealer only
Extended Life Arctic engine coolant, -51° C (-60° F)		✓	+Included in Heavy Duty/Forestry package.		
			‡Recommended for Heavy Duty/Forestry.		
			**Please check with your Cat dealer for availability.		



For more complete information on Cat products, dealer services, and industry solutions, visit us on the web at [www.cat.com](http://www.cat.com)

© 2024 Caterpillar  
All rights reserved

Materials and specifications are subject to change without notice. Featured machines in photos may include additional equipment. See your Cat dealer for available options.

CAT, CATERPILLAR, LET'S DO THE WORK, their respective logos, "Caterpillar Corporate Yellow," the "Power Edge" and Cat "Modern Hex" trade dress as well as corporate and product identity used herein, are trademarks of Caterpillar and may not be used without permission.

AEXQ3981-00 (10-2024)  
Build Number: 20C  
(Aus-NZ, S Am [excluding  
Chile and Colombia])

