

# D8

## TRACK-TYPE TRACTOR



---

**Net Power (2,050 rpm)**

ISO 9249/SAEJ1349

271 kW (363 hp)

ISO 9249/SAEJ1349 (DIN)

368 mhp

**Operating Weight**

Standard

39 000 kg (85,980 lb)

Desert

39 250 kg (86,531 lb)

*Cat® C15 Engine Brazil MAR-1, and UN ECE R96 Stage IIIA emission standards, equivalent to U.S. EPA Tier 3/EU Stage IIIA emission standards.*





# THE CAT® D8

## EASY AND EFFICIENT OPERATION

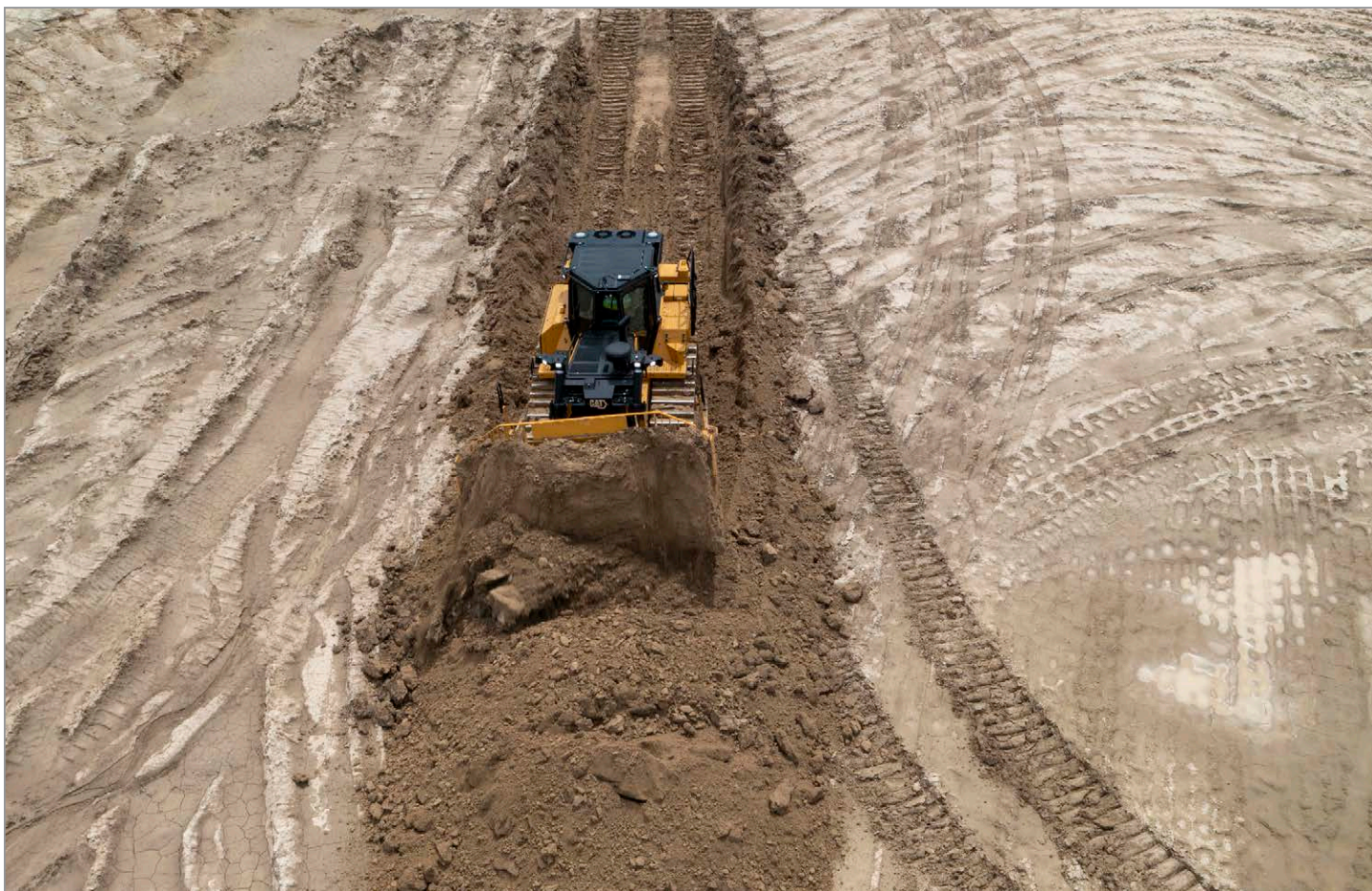
The Cat® next generation D8 track-type tractor delivers renowned performance you expect, with the added benefit of next generation technology. A fully automatic, 4-speed transmission makes efficient operation easy, without having to manage gear shifts. The broadest range of technology features in the industry work together seamlessly to help you make the most of your equipment investment. Common interface and controls from the D5 through D8 make it easy to operate different machine sizes.



### TECHNOLOGY FEATURES TO FIT YOUR BUSINESS

The Premium and High Debris cabs are technology-ready. Order technology packages from the factory to meet your needs or easily upgrade later as your work demands it.

- + Cat® Assist with ARO (attachment ready option) is a standard suite of technology features, including Cat Grade with Slope Assist™ and Steer Assist, helping operators of varying skill levels get the job done faster and easier.
- + Grade 3D with Assist package gives you all the Assist with ARO features, plus Grade 3D and Steer Assist 3D. Get to design plan faster and with less operator effort, so you can save time, money and fuel.
- + Remote Control Ready cab enables dealer installation of the Cat Command system.



## ADDED COMFORT AND SAFETY

Next generation cab with your choice of comfort options. Increase site safety with Cat® Detect options.

## GREATER EFFICIENCY

Common cab, controls, and interface across D5-D8 dozers and standard ease-of-use aids create an efficient operating environment. Experience up to 16% more drawbar power.<sup>1</sup>

## PRODUCTIVITY WITH TECHNOLOGY

A broad range of Assist and Grade technology choices help boost productivity. Assist features reduce operator inputs up to 45%.<sup>2</sup>

<sup>1</sup>Compared to the D8/D8T (19B). Additional drawbar power is the result of increased engine power and new 1.5F gear.

<sup>2</sup>Input reduction based on product testing of a D5 (17B) Next Generation Dozer with and without the use of Assist technology features, in a truck dump spreading in sand application. Test conducted by Caterpillar at Washington, IL in July 2022.



## NO NEED TO SHIFT

JUST SET YOUR GROUND SPEED AND GO.



- + No need to upshift/downshift
- + Fully automatic 4-speed transmission with lock-up clutch torque divider
- + Continuously selects the most productive, efficient gear and engine speed for the job



# COME ON IN AND MAKE YOURSELF COMFORTABLE

Step into a spacious cab that prioritizes operator comfort, visibility, and ease of operation. Integrated Rollover Protective Structure (ROPS) and next generation cab design provides 7% improved visibility.\* The wide, air suspension seat has multiple adjustments so every operator can adjust to fit their own ergonomic needs.



## GET TO KNOW YOUR MACHINE

At the center of the cab is an optional, easy-to-use 254 mm (10 inch) touchscreen display. This display shows a full screen view of the rearview camera with backup lines when the machine is in reverse. Also built into the display is Key Features Help, giving an overview of machine and technology features and helpful operating tips. Access other features such as Operator Profiles, Application Profiles, machine settings, and more from this screen.

*\*Visibility improvement based on virtual visibility analysis. Comparisons made from the D8T/D8 (19B) to the Next Generation D8 (22A).*





## FULLY AUTOMATIC

Fully automatic 4-speed powershift transmission with lock-up clutch torque divider continuously adjusts for maximum efficiency and power to the ground without shifting.



## MORE POWER

The 4-speed transmission reduces momentary hesitation when the transmission shifts, allowing the machine to maintain momentum and drawbar power throughout the entire push. Increase your productivity with up to 16%\* more drawbar power in certain applications.



## CAB CONTINUITY

Next generation cab means common controls, interface, and operator station for a consistent experience in D5 through D8 dozers.



## HIGH DRIVE, HIGH PERFORMANCE

Elevated sprocket undercarriage delivers better ride and balance, plus improved penetration force for top dozing performance. This design protects the final drive, allowing two steel idlers to take the impact, while having maximum track on the ground.

*\*Compared to the D8/D8T (19B). Additional drawbar power is the result of increased engine power and new 1.5F gear.*

# BE EFFICIENT

## GET MORE DONE



# OPERATOR HELPERS

## OPTIONAL TECHNOLOGY

Assist technology features help make work easier, especially for less experienced operators. Some blade and steering functions are automated so newer operators can work at productivity levels closer to their veteran counterparts. Seasoned operators can enjoy reduced effort, along with faster, more accurate results. Attachment Ready Option (ARO) with Assist bundles these features into one productivity-boosting package.



## NO GPS SIGNAL? NO PROBLEM

**Cat Grade with Slope Assist™** automatically maintains pre-established blade position without a Global Navigation Satellite System (GNSS)/Global Positioning System (GPS) signal – no additional hardware or software needed. For machines with 3D, operators can easily switch back and forth from full 3D automatics to Slope Assist.

**Slope Indicate** is included in the main machine display and shows side slope and uphill/downhill grades to help operators with slope work.

## SMOOTH OPERATOR

**Stable Blade** works seamlessly with operator inputs to help produce a smoother surface when operating manually.

## STAY ON TRACK

**Steer Assist** automates track and blade tilt steering. Helps reduce operator fatigue by automatically maintaining straight travel with light loads or heavy loads on flat ground and side slopes. Helps reduce steering inputs up to 75%.\* No Global Navigation Satellite System (GNSS)/Global Positioning System (GPS) required.

\* Input reduction based on product testing of a D5 (17B) Next Generation Dozer with and without the use of Assist technology features, in a truck dump spreading in sand application. Test conducted by Caterpillar at Washington, IL in July 2022.

## EASY UPGRADES

**Attachment Ready Option (ARO)** provides wiring and mounting provisions for dealer installation of Grade with 3D, Accugrade, UTS, or other grade control systems.

## KEEP PUSHING FORWARD

These Assist features help you make the most of every pass.

**Blade Load Monitor** gives you real-time feedback on current load versus the optimal blade load based on your ground conditions. Actively monitors machine load and track slip to help you reach optimal pushing capacity.\*

**Traction Control** automatically reduces track slip to save you time, fuel and track wear.\*

**AutoCarry** automates blade lift to help you maintain consistent blade load and reduce track slip.\*

**Auto Rip** automates ripper raise/lower and shank in/out to maximize ripping productivity.

\*Feature not operational indoors or in areas where a GNSS/GPS signal is not available.



PROVEN ADVANTAGE

WORK HARDER

EASIER

Optional Cat Assist and Grade technologies work in the background to help dozer operators of varied skill levels and are especially beneficial to less experienced operators. While there is no replacement for experience and expertise, training new operators is a long-term investment of time and money. To demonstrate just how much these built-in technology features help, Caterpillar put them to the test.

Two novice operators and two expert operators took on three challenges. Each operator completed three runs of each task – one in manual, one using Assist technology features, and one using Assist plus Cat Grade with 3D. The team measured material moved per

## SLOT DOZING

**Productivity and efficiency** – novice operators went from 9% lower productivity and efficiency than the experts in manual to matching the experts when using Assist.<sup>1</sup>

## SIDE SLOPE/STEER ASSIST

**Steering inputs** – novice and expert operator steering inputs reduced by 75% in forward and by 67% combining forward and reverse.<sup>5</sup>

*All data collected during the same test conducted by Caterpillar at Washington, IL in July 2022.*

<sup>1</sup>Improvements based on product testing of a D7 (17A) Next Generation Dozer with and without the use of Assist technology in a slot dozing application. Productivity measured as material moved per hour and verified by time keeping and a surveying drone. Efficiency measured as material moved per unit of fuel/Diesel Exhaust Fluid (DEF) and verified by a fuel and DEF burn electronic control module (ECM).

<sup>2</sup>Time reduction based on product testing of a D5 (17B) Next Generation Dozer with and without the use of Assist technology in a truck dump spreading/grading in sand application.

<sup>3</sup>Input reduction based on product testing of a D5 (17B) Next Generation Dozer with and without the use of Steer Assist in a side slope application. Inputs measured as number of times operator adjusts controls, collected and verified by electronic control module (ECM).

<sup>4</sup>Surface quality improvements based on product testing of a D5 (17B) Next Generation Dozer with and without the use of Assist technology in a truck dump spreading/grading in sand application. Surface quality measured as standard deviation from known design and verified by a surveying drone.

<sup>5</sup>Input reduction based on product testing of a D5 (17B) Next Generation Dozer with and without the use of Steer Assist in a side slope application. Inputs measured as number of times operator adjusts controls, collected and verified by electronic control module (ECM).

## TRUCK DUMP SPREADING/ GRADING IN SAND

**Completion time** – novice operators took 49% more time than the experts in manual and narrowed the gap to 17% using Assist and to 9% by adding Grade.<sup>2</sup>

**Blade inputs** – novice operator blade inputs were reduced 45% with Assist, and 55% with Assist plus Grade. Expert operator blade inputs were reduced 32% with Assist, and 53% with Assist plus Grade.<sup>3</sup>

**Surface quality** – novice operator surface quality improved up to 51% using technology while expert operator surface quality improved up to 27% using technology. Novice operators using technology produced similar surface quality to the expert operators in manual.<sup>4</sup>

### CAT® TECHNOLOGY IS LIKE HAVING A COACH IN THE CAB



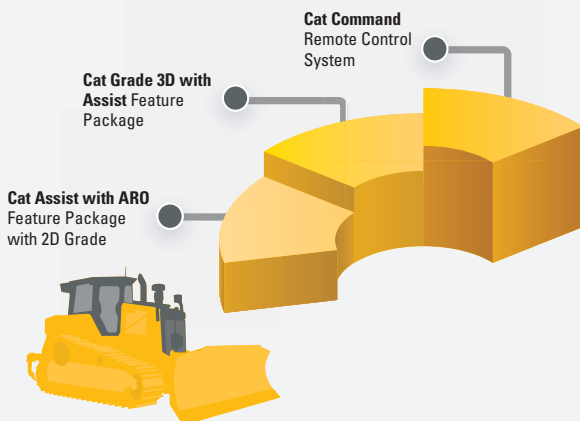
3D GRADE CONTROL

# BOOST YOUR PRODUCTIVITY



## LEVEL UP

CHOOSE THE RIGHT LEVEL OF TECHNOLOGY TO FIT YOUR BUSINESS AND BUDGET. ORDER FROM THE FACTORY OR UPGRADE LATER.



TECHNOLOGY PACKAGES THAT HELP **BOOST**  
TIME/MONEY/FUEL **SAVINGS**

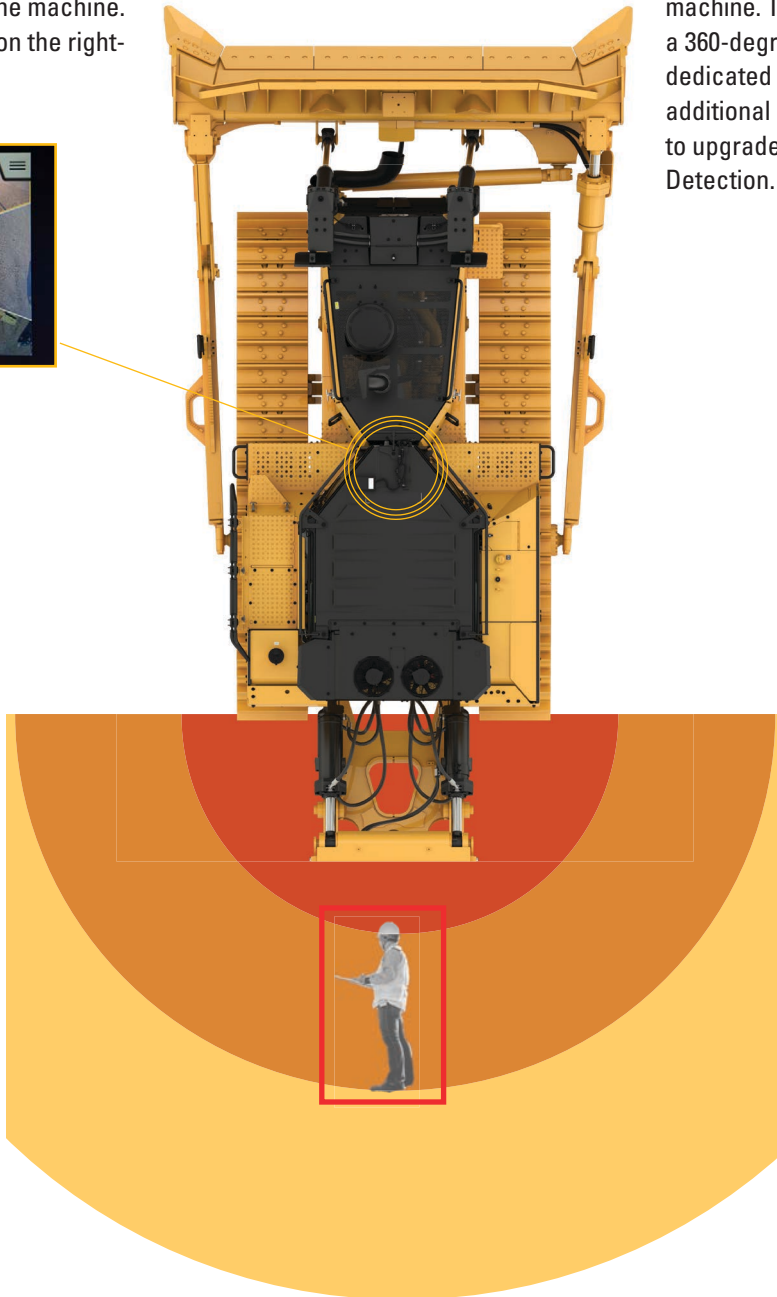
- + Factory integrated Cat Grade with 3D uses GNSS/GPS to control the blade so you can get to design the plan faster.
- + Grade 3D Ready integrates all wiring and hardware for Grade 3D at the factory, saving installation time later. Install the additional license to upgrade to fully functional Grade 3D whenever you're ready.
- + Cat Grade with 3D has no masts – low profile antennas are integrated into the cab roof and GNSS/GPS receivers are mounted inside the cab for better protection.
- + Automatically follow guidance lines from design plans with Steer Assist 3D. Stay on curb lines, centerlines, bottom of slope, etc., without operator effort. Track steering is used under light loads and blade tilt steering may be added under heavy loads.
- + Grade operator interface is intuitive and easy to use: 254 mm (10 inch) touchscreen, Android OS platform, operates like a smartphone.
- + Cab is Third-party Grade Control ready, equipped with Controller Area Network (CAN) interface, harness pass throughs and mounting features to make it easier to install the grade control system of your choice.
- + All Cat Grade systems are compatible with radios and base stations from Trimble, Topcon, and Leica.
- + Already invested in a grade infrastructure? You can install grade systems from Trimble, Topcon, and Leica onto the machine.



# CAT® DETECT FOR DOZERS

## DETECT DISPLAY

A full-color 254 mm (10 inch) dedicated touchscreen display is mounted above the front cab window displays an always-on, 360-degree view around the machine. Rearview mirror is relocated on the right-hand B-post.



## DETECTION ZONES

Detect alerts are categorized into 3 zones behind the machine: Awareness (yellow), Caution (amber), and Critical (red). Detection will occur up to 8 meters (26 feet) behind and to the sides of the machine at low speeds and will extend at higher speeds.

## SURROUND VISION

The standard rearview camera is upgraded to a Smart camera, with the addition of three more cameras on the front and sides of the machine. The cameras work together to create a 360-degree view around the machine on the dedicated display. Surround Vision requires additional license purchase and installation to upgrade to fully functional Rear People Detection.

## REAR PEOPLE DETECTION

When the system detects a person/people in the detection zones behind the machine, it sends visual and audible alerts to the operator using the in-cab display.



# MAINTENANCE MADE EASY UPTIME COUNTS



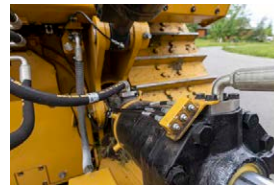
**GROUND-LEVEL  
SERVICE CENTER**



**ELEVATED  
SPROCKET, EASY  
CLEANOUT**



**FLUID SIGHT  
GAUGES**



**GROUPED  
MAINTENANCE  
POINTS**



**OPTIONAL FAST  
FUEL FILL**

## SAVE TIME, SAVE MONEY

Grouped service points and ground-level service center for more convenient, regular maintenance. Cab can be removed in 30 minutes if needed. Easy access to maintenance points through the cab floor. Extended intervals for some fluids and filters. Standard reversing fan helps remove debris works while you do to save cleanout and maintenance time. Use the ground-level service center and optional fast fuel fill to complete maintenance from the safety of the ground. Platform with guard rail makes refueling and diesel exhaust fluid (DEF) fill safe and convenient.



---

## KEEP WORKING

High ambient capability makes the D8 well-suited to extreme heat so you can work longer without shutting down.

---

## ARMED AGAINST ABRASION

Choose from a variety of factory options to support machine performance and service life in extremely sandy or abrasive conditions.

---

## LONGER LIFE, LESS CLEANING

Added seals, guarding, and special coating on different parts of the machine help keep out sand and resist abrasion. Replaceable wear plates off longer blade life when working in abrasive conditions.

DESERT CONFIGURATION

# HANDLE THE HEAT





# CAT EQUIPMENT MANAGEMENT

## TAKES THE GUESSWORK OUT OF MANAGING YOUR EQUIPMENT

Getting the most out of your equipment requires hundreds of decisions, every day. Cat Equipment Management gives you access to all the data you need to keep your equipment on the job site and earning money. You can track equipment location and hours, monitor machine use and health, then take informed action that will keep your operation running smoothly, efficiently and profitably.

### CAT PRODUCT LINK™ AND VISIONLINK™

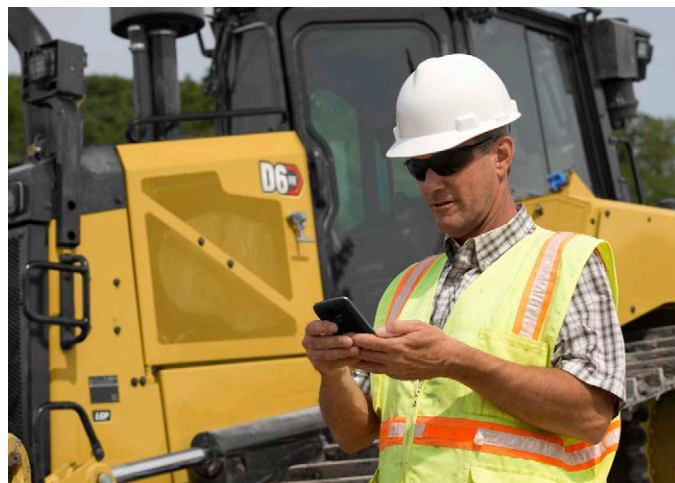
Product Link™ collects data automatically from your assets – any type and any brand. Access information anytime, anywhere with VisionLink™ – and use it to make informed decisions that boost productivity, lower costs, simplify maintenance and more. Satellite and/or cellular subscriptions are available.



### REMOTE SERVICES

The Cat App helps you manage your assets – at any time – right from your smartphone. See fleet location and hours, get critical required maintenance alerts and even request service from your local Cat dealer.

- + **Remote flash** – get software updates remotely.
- + **Remote troubleshoot** – remote diagnostic testing helps pinpoint potential issues, saving time and money.
- + **Operator ID** lets you track machine operation by individual operator using the main display and Product Link.



### REMOTE CONTROL READY

When dozers work in hazardous mining and earthmoving applications, the Command for Dozing option helps improve safety and efficiency. Operators control the machine using a line-of-sight console or a remote operator station. Deep integration with machine systems enables smooth, precise control for maximum efficiency and productivity.

With the line-of-sight console, take advantage of the dozer's built-in operator assist features. The remote operator station also allows full use of Grade and Assist technology features for even greater productivity.

Please consult your Cat dealer for regional availability.





# MORE THAN MACHINES

BUILT AROUND YOUR SUCCESS

When you buy Cat equipment, you get so much more than the machine. You also get the support of a best-in-class dealer network, backed by a range of flexible solutions, technology, tools, and more.



## CUSTOMER VALUE AGREEMENTS

A Customer Value Agreement (CVA) from your Cat dealer helps you do more and worry less. A CVA simplifies machine ownership and maintenance, adds the security of expert dealer support, and gives you the peace of mind from effective equipment health management.

## REPAIR OPTIONS

A broad range of repair options gives you choices that work with your needs, budget, and timeline. Every repair is performed by expert Cat technicians. You'll receive smart repair advice, a timely, accurate quote, and service that gets your machine back into action quickly.

## GENUINE CAT PARTS

Genuine Cat Parts deliver the highest level of reliability and productivity. Order direct from your Cat dealer or shop online at [parts.cat.com](https://parts.cat.com).

## FINANCIAL SERVICES

Count on Cat Financial to provide the best finance and extended protection solutions for your business. For more than 30 years, we have helped our customers succeed through financial service excellence.

## GET BACK TO WORK

Services to help you save time, save money, and get back on the job.

### CAT INSPECT

Access your equipment data on your mobile device. This easy-to-use app lets you capture inspection data and integrates with your other Cat data systems, so you can keep a close eye on your fleet.

### HYDRAULICS AND HOSE

Whether you choose new, Reman, exchange, or rebuilt hydraulic components, you'll get expert diagnostics, testing, and contamination control. Cat Hose Service offers hoses and couplings for most makes and models.

### CERTIFIED REBUILD

Get a full second machine life at a fraction of the cost of buying new. With upgraded features, safety enhancements, and the latest technologies, your old machine will perform even better than it did when it rolled off the line.

# TECHNICAL SPECIFICATIONS

See cat.com for complete specifications.

ENGINE		
Powertrain	Fully Automatic 4-Speed	
Engine	Cat® C15	
Emissions	Brazil MAR-1, and UN ECE R96 Stage IIIA emission standards, equivalent to U.S. EPA Tier 3/ EU Stage IIIA	
Net Power (2,050 rpm)		
ISO 9249/SAE J1349	271 kW	363 hp
ISO 9249 (DIN)		368 mhp
<ul style="list-style-type: none"><li>• Net power advertised is the power available at the flywheel when the engine is equipped with fan, air cleaner, muffler, and alternator.</li><li>• Advertised power is tested per the specified standard in effect at the time of manufacture.</li><li>• No derating required up to 4267 m (14,000 ft) altitude, beyond 4267 m (14,000 ft) automatic derating occurs.</li><li>• Cat diesel engines are required to use ULSD (ultra-low sulfur diesel fuel with 15 ppm of sulfur or less) and are compatible* with ULSD blended with the following lower-carbon intensity fuels** up to:<ul style="list-style-type: none"><li>✓ 100% biodiesel FAME (fatty acid methyl ester)*</li><li>✓ 100% renewable diesel, HVO (hydrotreated vegetable oil) and GTL (gas-to-liquid) fuels</li></ul></li><li>• Refer to guidelines for successful application. Please consult your Cat dealer or “Caterpillar Machine Fluids Recommendations” (SEBU6250) for details.</li></ul> <p>*For use of blends higher than 20% biodiesel, consult your Cat dealer.</p>		

BLADES	CAPACITY		WIDTH	
Standard Semi-Universal (SU)	10.3 m³	13.47 yd³	4038 mm	159 in
Standard Universal (U)	11.8 m³	15.43 yd³	4263 mm	168 in
Standard Angle (A)	6.1 m³	7.98 yd³	5046 mm	199 in
LGP Semi-Universal (SU)	9.9 m³	12.95 yd³	4542 mm	179 in
LGP Angle (A)	6.8 m³	8.89 yd³	5556 mm	219 in

SERVICE REFILL CAPACITIES		
Fuel Tank	624 L	164.8 gal
Optional, High Capacity Fuel Tank	821 L	216.9 gal

AIR CONDITIONING SYSTEM
The air conditioning system on this machine contains the fluorinated greenhouse gas refrigerant R134a or R1234yf. See the label or instruction manual for identification of the gas.
If equipped with R134a (Global Warming Potential = 1430), the system contains 1.36 kg (3.0 lb) of refrigerant which has a CO <sub>2</sub> equivalent of 1.95 metric tonnes (2.14 tons).

CONFIGURATION	D8		D8 LGP		D8 DESERT	
Operating Weight*	39 000 kg	85,980 lb	37 585 kg	82,861 lb	39 900 kg	87,964 lb
Ground Pressure	88.5 kPa	12.84 psi	53.9 kPa	7.82 psi	83.7 kPa	12.14 psi
Ground Clearance	622 mm	24.5 in	622 mm	24.488 in	622 mm	24.488 in
Width of Standard Track Shoe	610 mm	24.0 in	965 mm	37.992 in	660 mm	25.984 in
Machine Height	3.53 m	11'7"	3.53 m	11'7"	3.65 m	12'0"
Length of Machine (without Blade)	4.76 m	15'7"	4.76 m	15'7"	4.76 m	15'7"
Track Gauge	2.08 m	6'10"	2.34 m	7'8"	2.08 m	6'10"
Width across End Bits	4.04 m	13'3"	4.54 m	14'11"	4.04 m	13'3"
Length of Track on Ground	3.21m	10'6"	3.21 m	10'6"	3.21 m	10'6"

\*Operating weight includes blade, lubricants, coolant, full fuel tank, ROPS/FOPS cab, ripper, and 75 kg (165 lb) operator.



# STANDARD & OPTIONAL EQUIPMENT

Standard and optional equipment may vary. Consult your Cat dealer for details.

POWERTRAIN	STANDARD	OPTIONAL
Cat® C15 engine	●	
Fully-automatic 4-speed transmission with Lock-Up Clutch (LUC) torque divider	●	
Final Drives, double reduction – Standard or Low Ground Pressure (LGP)	●	
Fuel priming pump, electric	●	

OPERATOR ENVIRONMENT	STANDARD	OPTIONAL
Fully redesigned cab with Integrated ROPS and Falling Object Protective Structure (FOPS)	●	
203 mm (8 in) gauge cluster display	●	
Full-color 254 mm (10 in) liquid crystal touchscreen display		●
High Definition rear view camera with backup lines		●
Cab mounted modular HVAC system	●	
Electrohydraulic implement and steering controls	●	
Cloth seat	●	
Deluxe leather heated/ventilated seat		●
Communication radio ready		●
Standard Lights – 4 LED	●	
Deluxe Lights – 6 LED		●
Premium Lights – 12 LED		●
Integrated warning lights		●

BLADES	STANDARD	OPTIONAL
Semi-Universal (SU)		●
Universal		●
Waste/Landfill		●
Angle Blade		●

UNDERCARRIAGE	STANDARD	OPTIONAL
Heavy Duty (HDXL with DuraLink™)		●
Moderate Service track shoes	●	
Extreme Service track shoes		●

HYDRAULICS	STANDARD	OPTIONAL
Independent steering and implement pumps	●	
Load-sensing hydraulics	●	

CAT TECHNOLOGY	STANDARD	OPTIONAL
Slope Indicate	●	
Cat Assist with ARO Package		●
Cat Grade 3D Ready with Assist Package (Hardware Only)		●
Cat Grade 3D with Assist Package		●
Third Party Grade Control Ready Cab		●
Compatibility with radios and base stations from Trimble, Topcon, and Leica	●	
Capability to install 3D grade systems from Trimble, Topcon, and Leica	●	
Product Link™ – Cellular or Dual Mode		●
Remote Flash/Troubleshoot	●	
Cat Track Wear Sensor		●
Grade Connectivity		●
Grade Corrections Radio		●
Machine Security – Passcode	●	
Machine Security – Bluetooth		●
Remote Control Ready	●	
Cat Command for Dozing		●

SERVICE AND MAINTENANCE	STANDARD	OPTIONAL
Fast fuel fill		●
Shovel holder		●
Ground-level service center with remote electrical disconnect and secondary shutdown switch	●	
30-minute cab removal		●
Quick access cab floor		●
Ecology drains	●	
High-speed oil change		●
Underhood work light		●

ATTACHMENTS	STANDARD	OPTIONAL
Single shank ripper		●
Multi-shank ripper		●
Winch		●
Drawbar		●
Sweeps		●

For more complete information on Cat products, dealer services and industry solutions, visit us on the web at [www.cat.com](http://www.cat.com).

© 2025 Caterpillar. All Rights Reserved.

Materials and specifications are subject to change without notice. Featured machines in photos may include additional equipment. See your Cat dealer for available options.

CAT, CATERPILLAR, LET'S DO THE WORK, VisionLink, their respective logos, "Caterpillar Corporate Yellow," the "Power Edge" and Cat "Modern Hex" trade dress as well as corporate and product identity used herein, are trademarks of Caterpillar and may not be used without permission.

[www.cat.com](http://www.cat.com) [www.caterpillar.com](http://www.caterpillar.com)



AEXQ3925-01  
Replaces AEXQ3925-00  
Build Number: 22A  
(Afr-ME, Asia Pacific,  
Aus-NZ, Eurasia, India,  
Indonesia, S Am)

