

PAYLOAD

TECHNOLOGIES FOR MATERIAL HANDLERS



CAT® PAYLOAD* TECHNOLOGY

RAISE YOUR PRODUCTIVITY

*NOT LEGAL FOR TRADE

Next generation material handlers take on all kinds of tasks - loading, sorting, stockpiling, and more. Cat® Payload technology provides on-the-go weighing to help operators hit exact targets every time and avoid overloading, underloading, or misloading materials.



ACCURATE LOADING. FASTER. EASIER. SAFER. EVERY TIME.

Four ways Cat Payload delivers results for material handler applications:



REDUCE COSTS: SAVE ON TIME, LABOR, AND FUEL COSTS.



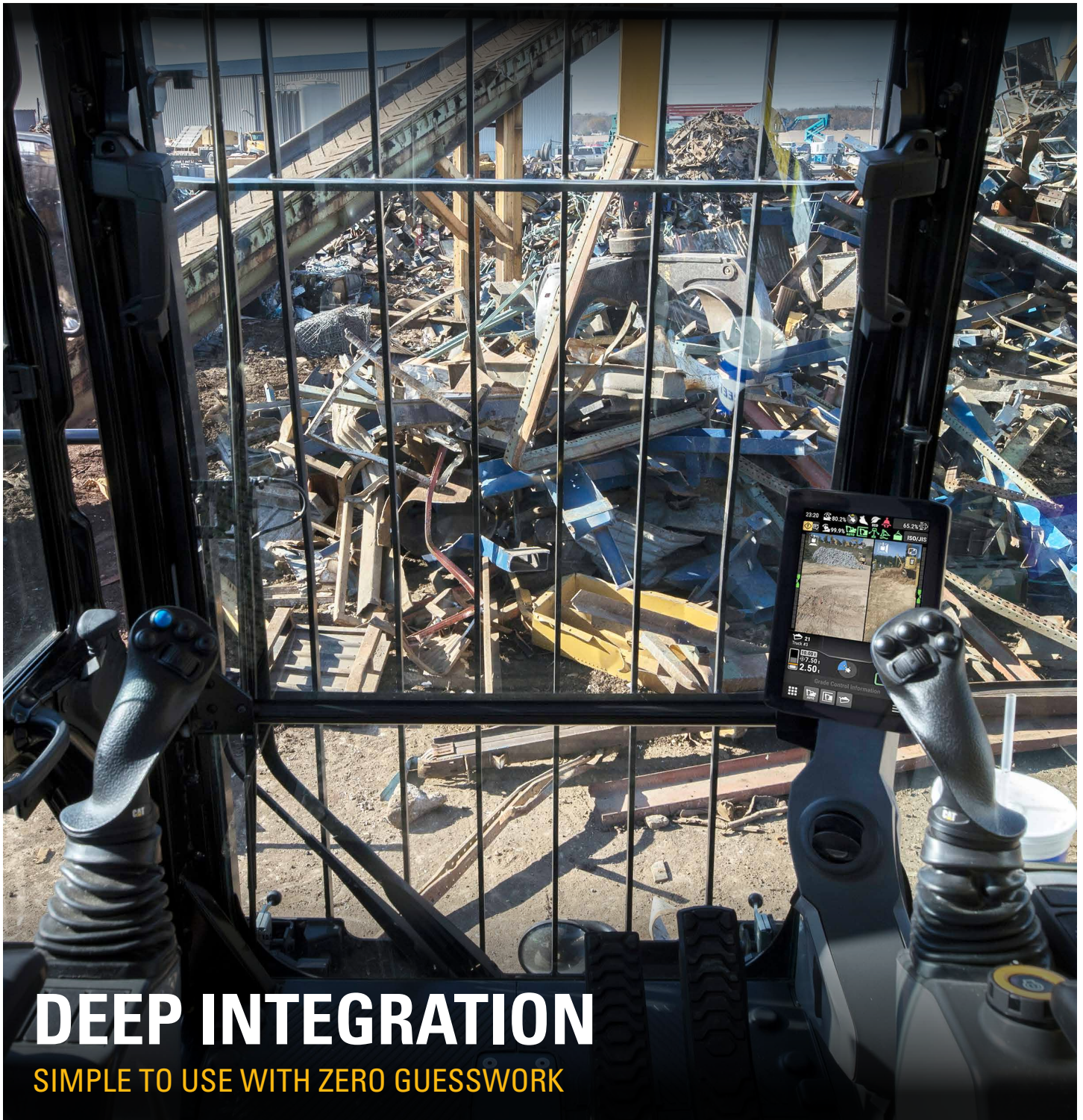
IMPROVE ACCURACY: PRECISE PAYLOAD TARGETS HELP ELIMINATE OVER AND UNDERLOADING.



INCREASE OPERATOR EFFICIENCY: EXPERIENCED OPERATORS WORK MORE ACCURATELY THAN EVER, WHILE NEW OPERATORS CAN GET UP TO SPEED MORE QUICKLY.



ENHANCE SAFETY: HELPS PREVENT TRUCK OVERLOADING, WHICH CREATES HEAVIER AND MORE UNSTABLE LOADS, REDUCING BRAKING PERFORMANCE AND PUTTING THE DRIVER AT GREATER RISK OF TIPPING.



DEEP INTEGRATION

SIMPLE TO USE WITH ZERO GUESSWORK

Cat Payload technologies are deeply integrated into next generation Cat material handlers to provide operators with a simple-to-use tool for precise loading. Payload is factory installed on new material handlers or can be retrofitted as a dealer option for select models.

THE RIGHT TECHNOLOGY FOR ANY LOADING APPLICATION

Operators can instantly view real-time weights on the monitor and know precisely how much material is in the grapple and in the truck, every load, every time. An easy-to-read display shows grapple and truckload weights while tracking load counts and material movements. This ensures trucks are loaded to their maximum potential and improves payload consistency for operators of all experience levels.

Payload compatibility varies by model and is not available for track material handlers. Contact your Cat dealer to discuss the best systems and options for your fleet, operators, and applications.

PAYLOAD TECHNOLOGY

LOAD EVERY TRUCK RIGHT THE FIRST TIME

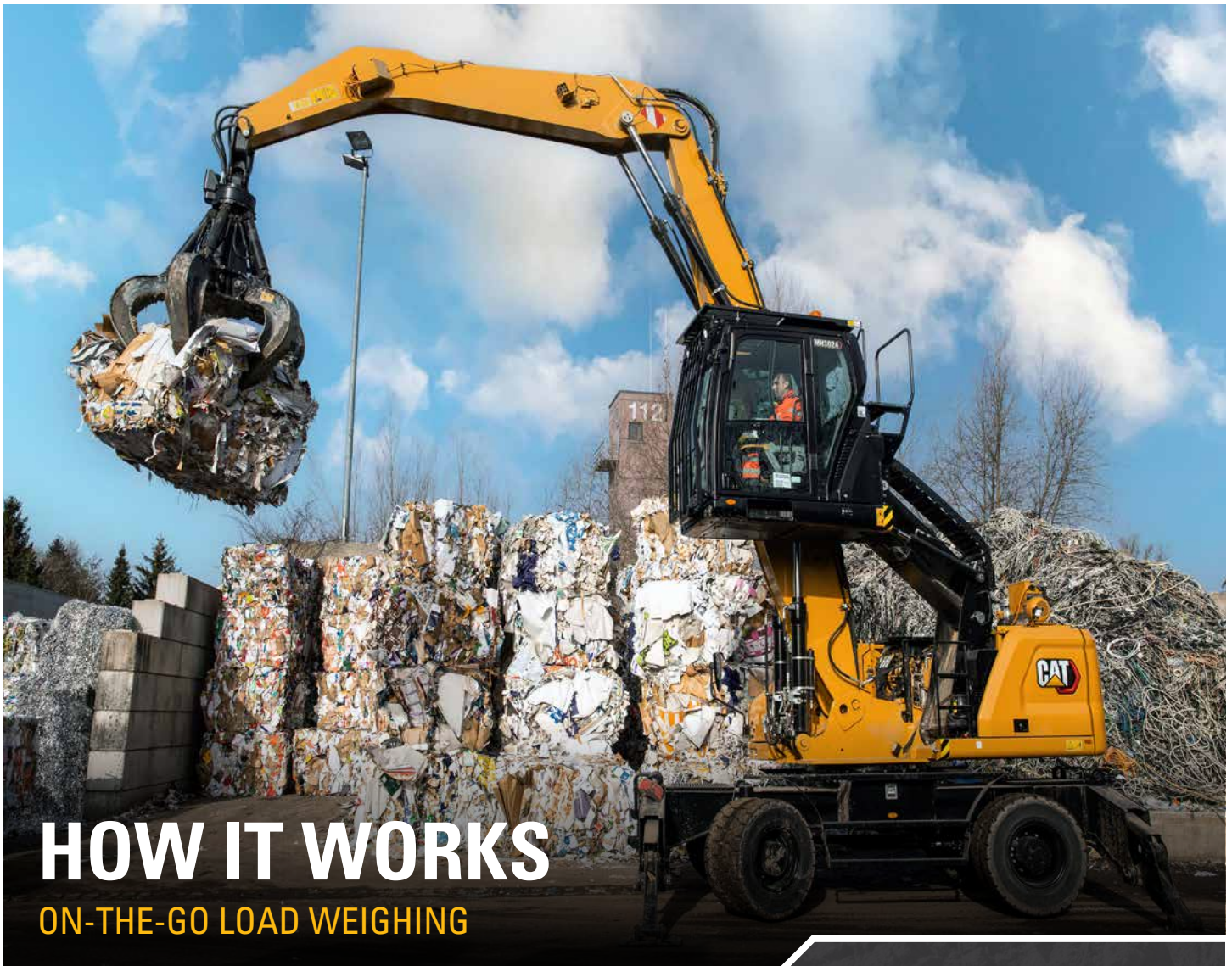


Cat Payload technology delivers onboard payload weighing along with valuable production measurement, and material tracking data. This data is available for individual machines, plus it can provide valuable fleet-wide operational efficiency data.

A VisionLink® Productivity subscription is required for equipment data reporting. Availability may vary by region and model, consult your Cat dealer for details.

WHAT CAN PAYLOAD DO FOR ME?

- + Increases productivity from operators
- + Helps to prevent over/underloading and misloading
- + Improves cycle times
- + Helps improve fuel efficiency, save on fuel costs
- + Helps retain skilled operators
- + Reduces unnecessary equipment wear and damage



HOW IT WORKS

ON-THE-GO LOAD WEIGHING

The Cat Payload system calculates material weight on the go by using data from sensors that measure grapple position and hydraulic pressure.

- + Automatic weighing provides estimated weights at low lifts (below weigh range) and scaled weights with the boom raised (through the weigh range).
- + Easily release excess material on the last pass with real-time weight estimates for precise loading - eliminate under / overloading.
- + Grapple payloads are transferred to the truck's cumulative payload weight as soon as an estimated weight is calculated. The payload is latched to the truck once the grapple load is fully dumped.
- + Set grab and dump area boundaries to help prevent payload miscounts, which may occur during activities such as re-sorting.
- + View grapple payload and truck cumulative payload weight effortlessly from the touchscreen monitor.
- + Receive payload overload alerts when grapple loads exceed machine payload limits.
- + Operators can track daily production from the cab with quick access to truck weights, load/cycle counts, material movement, and daily totals.
- + Managers can view payload details and key performance indicators online to help manage the business - requires a VisionLink® Productivity subscription.

PAYLOAD TECHNOLOGY BASIC OPERATION:

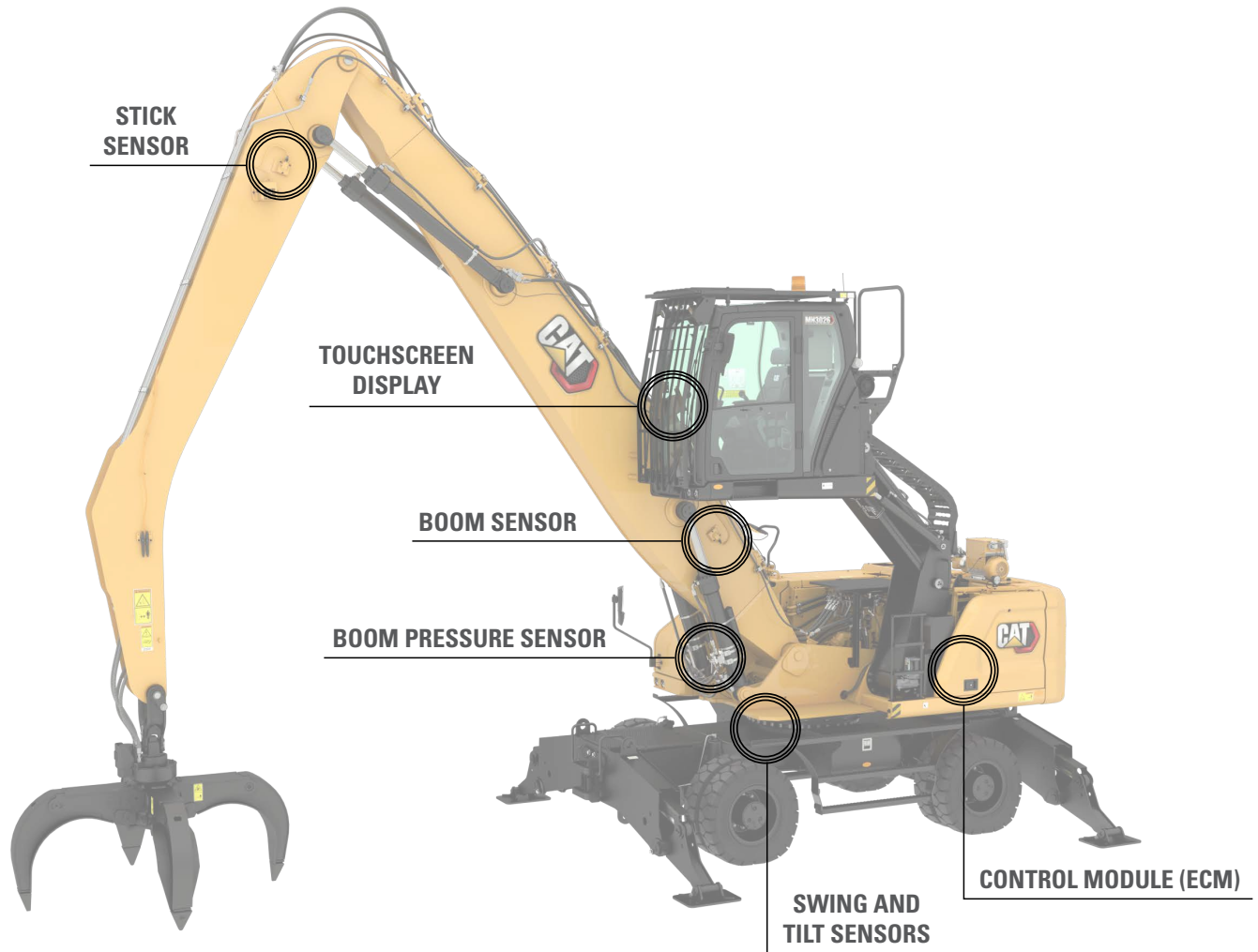
1. Warm up lift components for better accuracy.
2. Zero the empty grapple.
3. Set payload target weight (optional).
4. Load grapple with material.
5. Lift smoothly through the weigh range to generate a scaled weight.
6. Release excess material (as needed) to meet target weight for the last pass.
7. After the last grapple pass, press store to save payload data to memory and update totals.



PAYLOAD TECHNOLOGY

MODULAR COMPONENTS

Cat Payload's integrated components are protected from damage, ensuring long life, reliable control, and accurate results. Features and availability may vary. Consult your Cat dealer for model-specific information.



ATTACHMENTS

Payload for material handlers functions with a wide array of grapple attachments.



4-Tine Orange Peel Grapples



5-Tine Orange Peel Grapples



Demolition & Sorting Grapples



Clamshell Grapples

PAYLOAD DISPLAY OVERVIEW

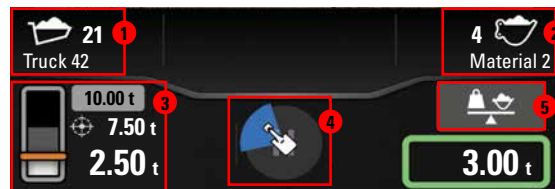


Next Generation Display Shown
(Display Can Vary By Machine Model)

Advanced Payload includes all of the standard features of Payload, plus the additional options outlined below:

PAYLOAD NAVIGATION MENU	
1	Truck ID & Count - Identifies the truck being loaded, and the load count for the truck.
2	Payload Gauge - Shows the current truck load level (white) and previews the result of material currently in the grapple (grey).
3	Target Payload - Sets the target payload weight.
4	Target Payload Status Icon - Conveys the target weight status to the operator (active if a target has been set).
5	Remaining Truck Payload - Displays the remaining weight needed to achieve the target payload.
6	Current Truck Payload - Displays the weight of material currently in the truck.

PAYLOAD NAVIGATION MENU	
8	Material ID & Count - Identifies the material being loaded and the load count for the current truck.
9	Reweigh Button - Allows the operator to recalculate the current grapple load.
10	Grapple Load - Shows the weight of material in the grapple. The green box indicates load weighing has been completed.
11	Grab & Dump Area Icon - Displays the set dump area range and shows if the grapple is within the dump area. Helps prevent payload miscounts during activities such as re-sorting.
12	Menu Button - Displays the Payload menu options.



Touchscreen shortcut areas allow operators to quickly access key menu features:

- 1. Truck Select
- 2. Material Select
- 3. Target Payload
- 4. Grab & Dump Area
- 5. Reweigh



GRAB-DUMP AREA

PREVENT ACCIDENTAL MISCOUNTS

Operators can set grab-and-dump area boundaries to help prevent payload miscounts. If limits are not specified, a miscount can occur during a re-grab or stockpiling of material.

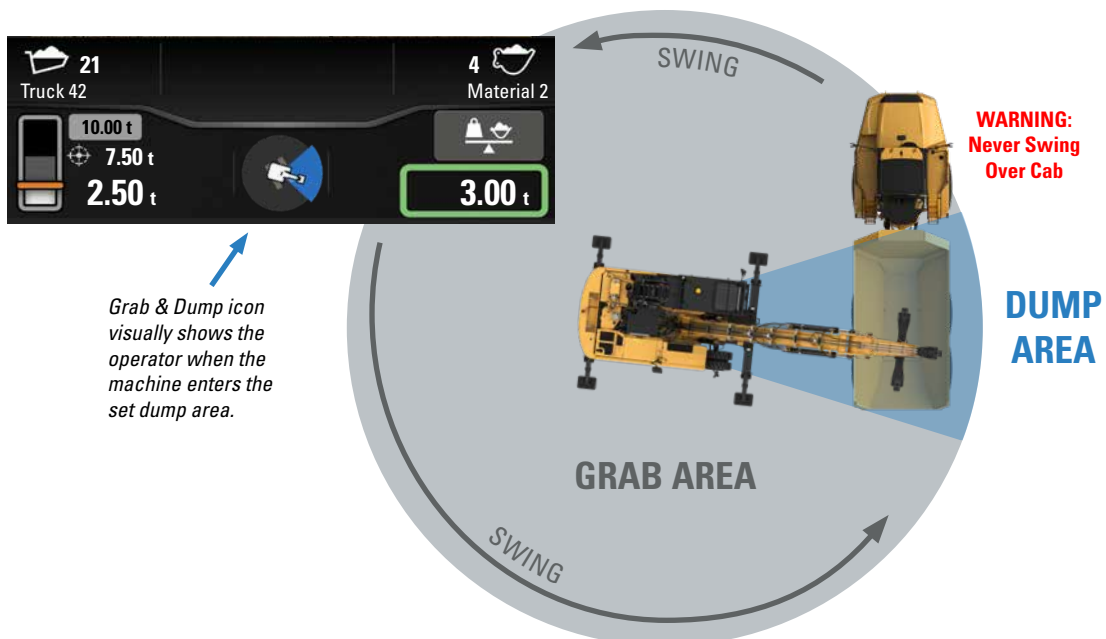
Grab-and-dump functionality calculates and counts the payload weight when the grapple crosses over the defined dump area. This functionality is helpful for industrial waste, demolition, and wood applications.

GRAB AREA

- + If the machine dumps in this area, the material weight is not reflected in the truck's payload.

DUMP AREA

- + The material weight will be added to the truck's payload when the machine dumps inside this area.



PAYLOAD CYCLE

HIT PAYLOAD TARGETS EVERY TIME



1. GRAB

The weight from the previous grapple is displayed. The payload gauge indicates the amount loaded in the truck (15.00 t). The target payload is 25.00 t, and the remaining payload is 10.00 t.

2. LIFT

The next grapple of material has been loaded. When the grapple is curled and lifted, the load indicator shows an estimated weight of 10.00 t.



3. SWING (START)

Grapple payload weight begins to converge with payload gauge data (dark grey area), and the estimated weight is still displayed.

4. SWING (END)

Weighing has been completed, as indicated by the green box around the grapple load total. The target payload status icon indicates the last cycle as the remaining truck payload target has been reached. The grapple is now positioned within the dump area.



5. RELEASE

When the grapple material is dumped, the truck payload, remaining payload, and load count are updated. The target payload status icon indicates that the target has been reached.

6. OVERLOAD

If an overload occurs, the target payload status icon turns red, and the remaining truck payload shows the overload amount (-1.00 t).





IMPROVE PRODUCTIVITY

TRACK AND MONITOR PRODUCTION

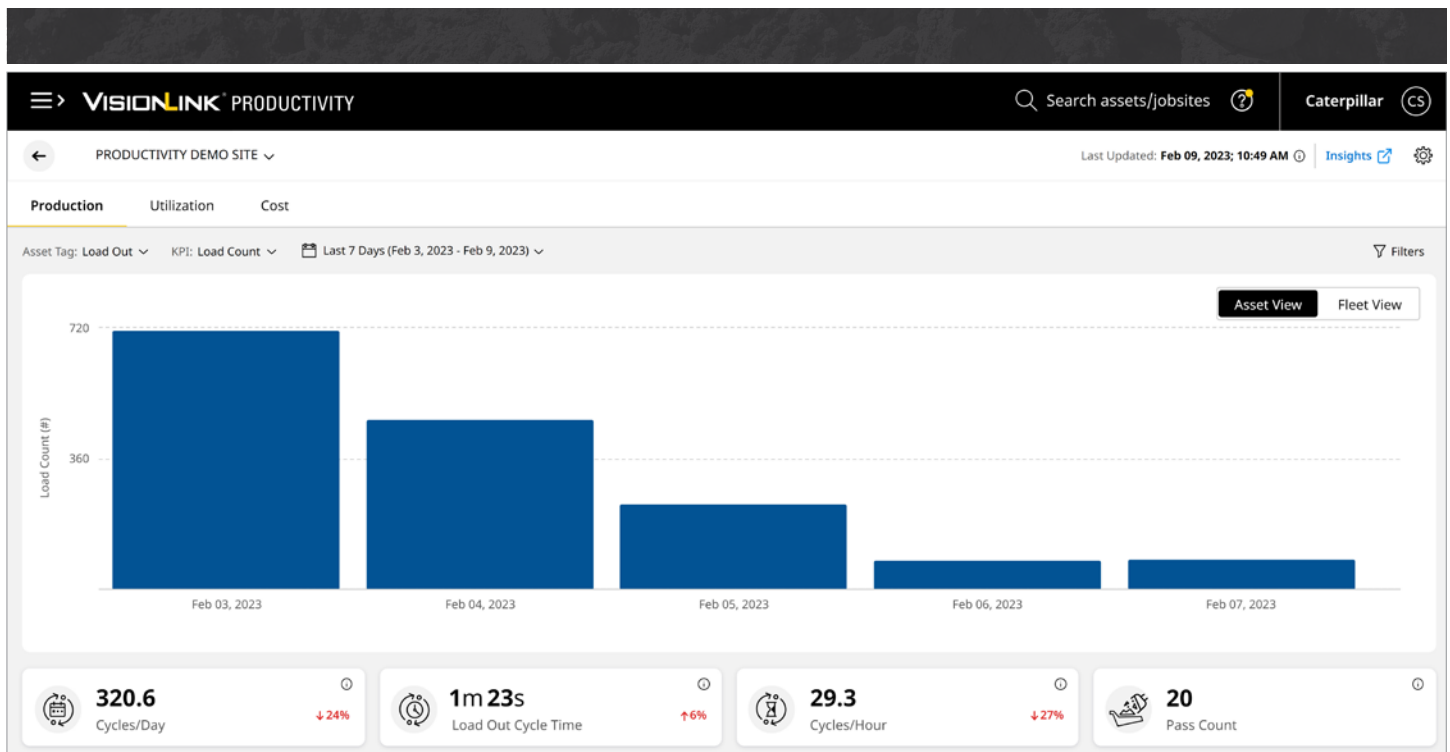
VISIONLINK® PRODUCTIVITY

BETTER DATA, BETTER DECISIONS

While every jobsite engages in production, productivity remains a challenge for many. Low productivity means low revenue and has a direct impact on profitability. VisionLink® Productivity helps you measure, monitor, and manage your assets to maximize productivity - on or off the jobsite.

VisionLink Productivity is a scalable, cloud-based application that collects and summarizes machine telematics and jobsite data from all your equipment - regardless of the manufacturer.*

The platform provides users with actionable information, including idle time, fuel burn, location, material moved, and more. The data is transmitted from the onboard cellular Cat Product Link™ device to the web platform. Users can access information using a smartphone, tablet, or desktop device.



YOU HAVE QUESTIONS



VISIONLINK PRODUCTIVITY HAS THE ANSWERS

Whether you are a site manager, foreman, or owner, you will have questions about your operations. VisionLink Productivity can provide answers to how work is progressing wherever you are on or off the jobsite.

- Cycle Count
- Total Payload
- Date Last Reported
- Average Payload
- Average Cycle/Hour
- Payload/Hour
- Payload/Fuel
- Total Distance
- Runtime Hours
- Idle Hours
- Fuel Burned

NOTE: A VisionLink® Productivity plan for each asset is required. Machines must be equipped with Cat Payload to provide more advanced productivity data. Availability may vary by region and model, not available for track material handlers. Consult your Cat dealer for details.

** Data field availability can vary by equipment manufacturer.*

For more complete information on Cat products, dealer services and industry solutions, visit us on the web at www.cat.com.

PEDJ1114 (09-2024)
(Global)

© 2024 Caterpillar. All Rights Reserved.

Materials and specifications are subject to change without notice. Featured machines in photos may include additional equipment. See your Cat dealer for available options.

CAT, CATERPILLAR, LET'S DO THE WORK, VisionLink, their respective logos, "Caterpillar Corporate Yellow," the "Power Edge" and Cat "Modern Hex" trade dress as well as corporate and product identity used herein, are trademarks of Caterpillar and may not be used without permission. VisionLink is a trademark of Caterpillar Inc., registered in the United States and in other countries.

www.cat.com www.caterpillar.com

