



326

Hydraulic Excavator

Technical Specifications

Configurations and features may vary by region. Please consult your Cat® dealer for availability in your area.

Table of Contents

Specifications	2
Engine	2
Swing Mechanism	2
Weights	2
Track	2
Drive	2
Hydraulic System	2
Service Refill Capacity	2
Standards	2
Sound Performance	2
Operating Weights and Ground Pressures	3
Major Component Weights	3
Dimensions	4
Working Ranges and Forces	5
Bucket Specifications and Compatibility	6
Attachments Offering Guide	7
Standard and Optional Equipment	8
Dealer Installed Kits and Attachments	10
Cab Options	11
326 Environmental Declaration	12

326 Hydraulic Excavator Specifications

Engine

Engine Model	Cat® C7.1	
Net Power		
ISO 9249	157.8 kW	212 hp
ISO 9249 (DIN)	215 hp (metric)	
Engine Power		
ISO 14396	159 kW	213 hp
ISO 14396 (DIN)	216 hp (metric)	
Bore	105 mm	4 in
Stroke	135 mm	5 in
Displacement	7.0 L	428 in ³
Biodiesel Capability	Up to B20 ⁽¹⁾	

- Emits equivalent to U.S. EPA Tier 3 and EU Stage IIIA.
- Recommended for use up to 4500 m (14,760 ft) altitude with engine power derate above 3000 m (9,840 ft).
- Advertised power is tested per the specified standard in effect at the time of manufacture.
- Net power advertised is the power available at the flywheel when the engine is equipped with fan, air intake system, exhaust system and alternator.
- Engine speed at 1,900 rpm.

⁽¹⁾Cat engines are compatible with diesel fuel blended with the following lower-carbon intensity fuels** up to:

- ✓ 100% biodiesel FAME (fatty acid methyl ester)*
- ✓ 100% renewable diesel, HVO (hydrogenated vegetable oil) and GTL (gas-to-liquid) fuels

Refer to guidelines for successful application. Please consult your Cat dealer or “Caterpillar Machine Fluids Recommendations” (SEBU6250) for details.

*For use of blends higher than 20% biodiesel, consult your Cat dealer.

**Tailpipe greenhouse gas emissions from lower-carbon intensity fuels are essentially the same as traditional fuels.

Swing Mechanism

Swing Speed	9.8 rpm	
Maximum Swing Torque	106 kN·m	78,180 lbf·ft

*For CE-marked machine default value may be set lower.

Weights

Operating Weight	25 700 kg	56,600 lb
------------------	-----------	-----------

• Long undercarriage, Heavy Duty (HD) Reach boom, HD R2.95 m (9'8") stick, 1.54 m³ (2.01 yd³) General Duty (GD) bucket, 600 mm (24") triple grouser shoes and 4.6 mt (10,140 lb) counterweight.

Track

Track Shoes Width	600 mm	24 in
Track Shoes Width	790 mm	31 in
Number of Shoes (each side)	51	
Number of Track Rollers (each side)	8	
Number of Carrier Rollers (each side)	2	

Drive

Gradeability	35°/70%	
Maximum Travel Speed	5.7 km/h	3.5 mph
Maximum Drawbar Pull	226 kN	50,807 lbf

Hydraulic System

Main System – Maximum Flow – Implement	481 L/min (241 × 2 pumps)	127 gal/min (64 × 2 pumps)
Maximum Pressure – Equipment – Normal	35 000 kPa	5,075 psi
Maximum Pressure – Heavy Lift Mode/Auto Dig Boost	38 000 kPa	5,510 psi
Maximum Pressure – Travel	35 000 kPa	5,075 psi
Maximum Pressure – Swing	28 400 kPa	4,118 psi
Boom Cylinder – Bore	135 mm	5 in
Boom Cylinder – Stroke	1305 mm	51 in
Stick Cylinder – Bore	140 mm	6 in
Stick Cylinder – Stroke	1660 mm	65 in
Bucket Cylinder – Bore	130 mm	5 in
Bucket Cylinder – Stroke	1156 mm	46 in

Service Refill Capacity

Fuel Tank Capacity	474 L	125.2 gal
Cooling System	25 L	6.6 gal
Engine Oil (with filter)	25 L	6.6 gal
Swing Drive	11.5 L	3.0 gal
Final Drive (each)	4.5 L	1.2 gal
Hydraulic System (including tank)	310 L	81.9 gal
Hydraulic Tank (including suction pipe)	147 L	38.8 gal

Standards

Brakes	ISO 10265:2008
Cab/Cab/Operator Protective Guards (OPG) (optional)	ISO 10262:1998 Level II
Cab/Rollover Protective Structure (ROPS)	ISO 12117-2:2008

Sound Performance

ISO 6395:2008 (external)	104 dB(A)
ISO 6396:2008 (inside cab)	70 dB(A)

- External Sound – The spectator sound power level is measured according to the test procedures and conditions specified in ISO 6395:2008 for a Cat machine that is properly equipped and maintained. The measurements were conducted at 70% of the maximum engine cooling fan speed.
- Internal Sound – The operator sound pressure level is measured according to the test procedures and conditions specified in ISO 6396:2008 for a cab offered by Caterpillar, when properly installed and maintained and tested with the door and windows closed. The measurements were conducted at 70% of the maximum engine cooling fan speed.
- Hearing protection may be needed when operating with an open operator station and cab (when not properly maintained for doors/windows open) for extended periods or in noisy environment(s).

326 Hydraulic Excavator Specifications

Operating Weights and Ground Pressures

	600 mm (24") Triple Grouser Shoes		600 mm (24") Double Grouser Shoes		790 mm (31") Triple Grouser Shoes	
	Weight kg (lb)	Ground Pressure kPa (psi)	Weight kg (lb)	Ground Pressure kPa (psi)	Weight kg (lb)	Ground Pressure kPa (psi)
Base Machine Configurations						
Base Frame with Track Rollers and Carrier Rollers						
4.6 mt (10,140 lb) Counterweight + Long Undercarriage Base Machine						
HD Reach Boom + HD R2.95CB (9'8") Stick + 1.54 m ³ (2.01 yd ³) GD Bucket	25 700 (56,700)	51 (7.4)	25 600 (56,400)	51 (7.4)	26 300 (58,000)	40 (5.8)

All operating weights include a 90% fuel tank with 75 kg (165 lb) operator.

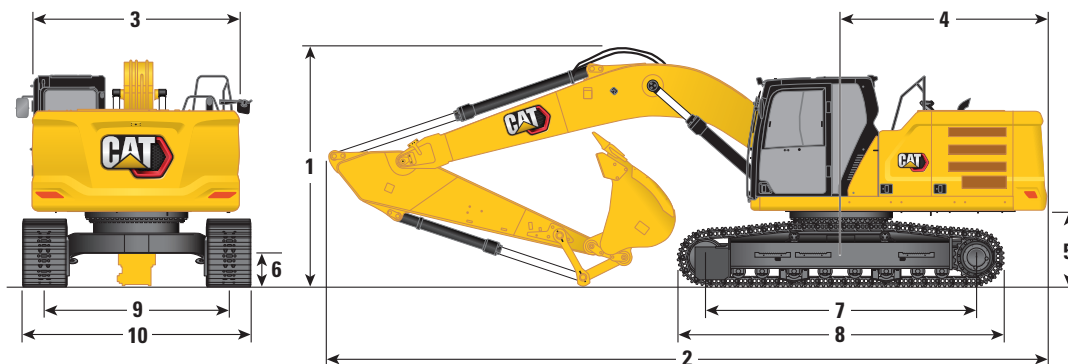
Major Component Weights

	kg	lb
Base Machine Weight (with upper frame, long undercarriage, counterweight, boom cylinders – does not include boom, stick, bucket, stick cylinder, bucket cylinders, tracks, fuel tank and operator).		
With 4.6 mt (10,140 lb) Counterweight	16 940	37,350
Track Shoes:		
600 mm (24") Width, 12.5 mm (0.49") Thick Triple Grouser Track Shoes	3330	7,340
600 mm (24") Width, 13 mm (0.51") Thick Double Grouser Track Shoes	3250	7,170
790 mm (31") Width, 12.5 mm (0.49") Thick Triple Grouser Track Shoes with Step Extension	4000	8,820
Two Boom Cylinders	460	1,010
Weight of 90% Fuel Tank and 75 kg (165 lb) Operator	510	1,120
Counterweight:		
4.6 mt (10,140 lb) Counterweight	4600	10,140
Undercarriage:		
Long Undercarriage	5020	11,070
Boom (including lines, pins, stick cylinder):		
HD Reach Boom 5.9 m (19'4")	2250	4,960
Stick (including lines, pins, bucket cylinder, bucket linkage):		
HD Reach Stick R2.95CB (9'8")	1470	3,240
Buckets (without linkage, with tips and side-cutters):		
1.54 m ³ (2.01 yd ³) GD CB Linkage	1160	2,560
1.60 m ³ (2.09 yd ³) HD CB Linkage	1320	2,910

326 Hydraulic Excavator Specifications

Dimensions

All dimensions are approximate and may vary depending on bucket selection.



Boom Options

HD Reach Boom
5.9 m (19'4")

Stick Options

HD Reach Stick
R2.95CB (9'8")

1 Machine Height

Cab Height	3000 mm	9'10"
Top of Global Navigation Satellite System (GNSS) Antenna Height (if installed)	3030 mm	9'11"
OPG Height	3140 mm	10'4"
Handrail Height	3000 mm	9'10"
With Boom/Stick/Bucket Installed	3250 mm	10'8"
With Boom/Stick Installed	3120 mm	10'3"
With Boom Installed	3000 mm	9'10"

2 Machine Length:

With Boom/Stick/Bucket Installed	10 060 mm	33'0"
With Boom/Stick Installed	10 040 mm	32'11"
With Boom Installed	8720 mm	28'7"

3 Upperframe Width

2940 mm 9'8"

4 Tail Swing Radius

3000 mm 9'10"

5 Counterweight Clearance

1060 mm 3'6"

6 Ground Clearance

440 mm 1'5"

7 Track Length – Length to Center of Rollers

3830 mm 12'7"

8 Crawler Overall Length

4640 mm 15'3"

9 Track Gauge

10 Undercarriage Width:

With 600 mm (24") Shoes	2590 mm	8'6"
With 790 mm (31") Shoes with Steps	3190 mm	10'6"
	3380 mm	11'1"

Bucket Type

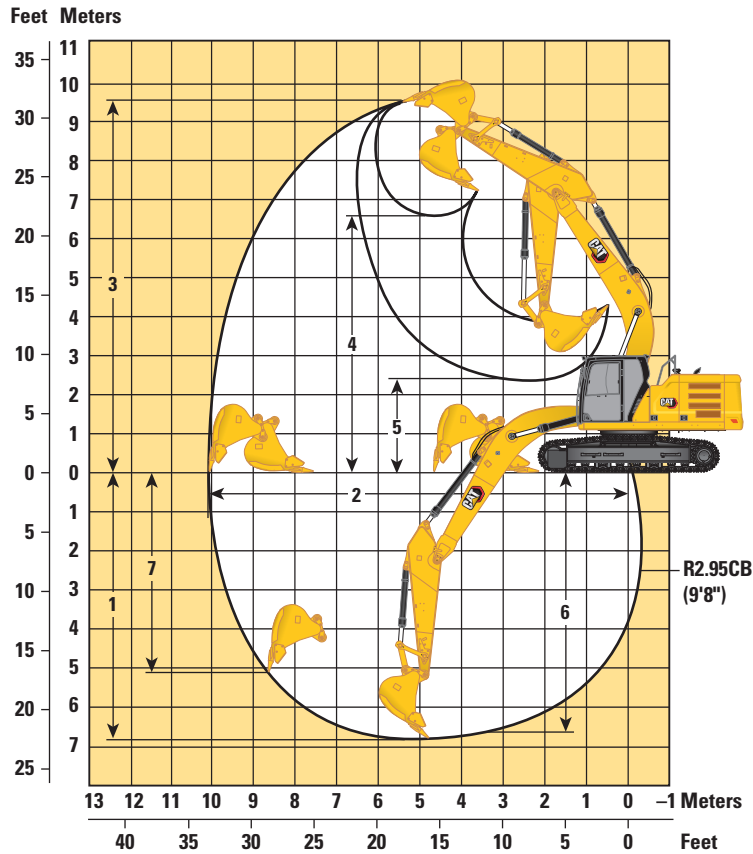
GD

Bucket Capacity	1.54 m ³	2.01 yd ³
Bucket Tip Radius	1640 mm	5'4"

326 Hydraulic Excavator Specifications

Working Ranges and Forces

All dimensions are approximate and may vary depending on bucket selection.



Boom Options	HD Reach Boom 5.9 m (19'4")	
Stick Options	HD Reach Stick R2.95CB (9'8")	
1 Maximum Digging Depth	6800 mm	22'4"
2 Maximum Reach at Ground Line	10 090 mm	33'1"
3 Maximum Cutting Height	9640 mm	31'8"
4 Maximum Loading Height	6640 mm	21'9"
5 Minimum Loading Height	2410 mm	7'11"
6 Maximum Depth Cut for 2240 mm (8'0") Level Bottom	6620 mm	21'9"
7 Maximum Vertical Wall Digging Depth	5120 mm	16'10"
Bucket Digging Force (ISO)*	166 kN	37,320 lbf
Stick Digging Force (ISO)*	121 kN	27,200 lbf
Bucket Type	GD	
Bucket Capacity	1.54 m ³	2.01 yd ³
Bucket Tip Radius	1640 mm	5'4"

*8.5% Auto Dig Boost pressure not included.

326 Hydraulic Excavator Specifications

Bucket Specifications and Compatibility

	Linkage	Width		Capacity		Weight		Fill	HD Reach
		mm	in	m³	yd³	kg	lb	%	HD R2.95 (9'8")
Pin-On (No Quick Coupler)									
General Duty	CB	1400	55	1.54	2.01	1072	2,363	100	⦿
Heavy Duty	CB	1450	58	1.60	2.09	1269	2,797	100	⊖
	CB	1250	49	1.33	1.74	1153	2,541	100	⦿
	CB	1400	55	1.54	2.02	1256	2,770	100	⊖
	CB	1500	60	1.76	2.30	1378	3,038	100	○
Maximum load with pin-on (payload + bucket)								kg	3718
								lb	8,197
With Cat Pin Grabber Coupler									
General Duty	CB	1400	55	1.54	2.01	1072	2,480	100	○
Heavy Duty	CB	1450	58	1.60	2.09	1269	2,797	100	○
	CB	1250	49	1.33	1.74	1153	2,541	100	⊖
	CB	1400	55	1.54	2.02	1256	2,770	100	○
	CB	1500	60	1.76	2.30	1378	3,038	100	◇
Maximum load with coupler (payload + bucket)								kg	3192
								lb	7,037

Maximum Material Density:

- ⦿ 1800 kg/m³ (3,000 lb/yd³)
- ⊖ 1500 kg/m³ (2,500 lb/yd³)
- 1200 kg/m³ (2,000 lb/yd³)
- ◇ 900 kg/m³ (1,500 lb/yd³)
- X Not Recommended

The above loads are in compliance with hydraulic excavator standard EN474-5:2022/AC:2022, they do not exceed 87% of hydraulic lifting capacity or 75% of tipping capacity with front linkage fully extended at ground line with bucket curled. Capacity based on ISO 7451:2007. Bucket weight with General Duty tips.

Caterpillar recommends using appropriate work tools to maximize the value customers receive from our products. Use of work tools, including buckets, which are outside of Caterpillar’s recommendations or specifications for weight, dimensions, flows, pressures, etc. may result in less-than-optimal performance, including but not limited to reductions in production, stability, reliability, and component durability. Improper use of a work tool resulting in sweeping, prying, twisting and/or catching of heavy loads will reduce the life of the boom and stick.

Attachments Offering Guide

Not all Attachments are available in all regions. Consult your Cat dealer for configurations available in your region.

☒ Match

PIN-ON ATTACHMENTS

Boom Type		HD Reach
Stick Length		HD R2.95 (9'8")
Hydraulic Hammers	H120 GC S	✓
	H130 GC S	✓
Rotary Cutters	RC20	✓
	RC30	✓

326 Standard and Optional Equipment

Standard and Optional Equipment

Standard and optional equipment may vary. Consult your Cat® dealer for details.

	Standard	Optional		Standard	Optional
BOOMS, STICKS AND LINKAGES			ELECTRICAL SYSTEM		
5.9 m (19'4") HD Reach boom	✓		Maintenance-free 1,000 CCA batteries	✓	
2.95 m (9'8") HD Reach stick	✓		Centralized electrical disconnect switch	✓	
Bucket linkage, CB1 type with lifting eye		✓	Programmable time-delay working lights	✓	
Bucket linkage, CB1 type without lifting eye		✓	Chassis, boom and cab lights	✓	
CAT TECHNOLOGY			Premium surround lighting package		✓
Cat Equipment Management:			ENGINE		
– VisionLink™	✓ ¹		Cat C7.1 single turbo diesel engine	✓	
– Remote Flash	✓		Three selectable modes: Power, Smart, Eco	✓	
– Remote Troubleshoot	✓		4500 m (14,760 ft) altitude capability	✓	
– Work tool recognition and tracking (PL161)	✓ ²		with engine power derate above 3000 m (9,840 ft)		
– Operator Coaching		✓ ³	Electric cooling fans with auto-reverse function	✓	
Cat Grade:			Auto engine speed control	✓	
– Cat Grade with 2D	✓		Auto engine idle shutdown	✓	
– Cat Grade with 2D with Attachment Ready Option (ARO)		✓	Electric fuel priming pump	✓	
– Laser catcher		✓	52° C (125° F) high-ambient cooling capacity	✓	
– Cat Grade with 3D (single or dual GNSS)		✓	–18° C (0° F) cold start capability	✓	
– Compatible with 3D grade systems from Trimble, Topcon, and Leica	✓		Double element air filter with integrated pre-cleaner	✓	
– Cat Grade 3D Ready		✓	2 × 115 Amp dual alternator	✓	
Cat Assist:			Two-stage fuel filtration system with water separator and indicator	✓	
– Grade Assist	✓				
– Boom Assist	✓				
– Bucket Assist	✓				
– Swing Assist	✓				
– Lift Assist	✓				
Cat Payload:					
– On-the-go weighing	✓				
– Semiautomatic calibration	✓				
– Payload/cycle information	✓				
– VisionLink back office reporting		✓ ⁴			
Cat Advanced Payload:					
– Daily totals		✓			
– Custom lists		✓			
– Smart weight target		✓			
– E-ticket Integration		✓ ⁴			
Other:					
Cat Tiltrotator (TRS) integration		✓			

¹Provides core telematics data to manage health, maintenance insights, and condition monitoring. Other plans available for more comprehensive data reporting. Consult your Cat dealer for details.

²Requires PL161 attachment locator on work tool and Bluetooth® receiver on machine.

³VisionLink subscription required for back office reporting. Consult your Cat dealer for details.

⁴VisionLink subscription required. Consult your Cat dealer for details.

(continued on next page)

Standard and Optional Equipment (continued)

Standard and optional equipment may vary. Consult your Cat dealer for details.

	Standard	Optional		Standard	Optional
HYDRAULIC SYSTEM			UNDERCARRIAGE AND STRUCTURES		
Electronic main control valve	✓		Two-piece segmented track guiding guards		✓
Auto Dig Boost	✓		Full length track guiding guards		✓
Stick regeneration circuit	✓		Swivel guard		✓
Hydraulic efficiency monitoring		✓	Bottom guards		✓
Tandem type electronic main pump	✓		HD bottom guards		✓
Auto warm up	✓		Travel motor guards		✓
Two-speed travel	✓		HD travel motor guards		✓
Boom and stick drift reduction valve	✓		Grease lubricated track	✓	
Element type main hydraulic filter	✓		4.6 mt (10,141 lb) counterweight	✓	
Hammer return filter circuit		✓	600 mm (24") triple grouser track shoes		✓
SAFETY AND SECURITY			600 mm (24") double grouser track shoes		✓
2D E-Fence	✓		790 mm (31") triple grouser track shoes		✓
– E-ceiling			Tie-down points	✓	
– E-floor					
– E-swing					
– E-wall					
– E-cab avoidance					
Auto hammer stop	✓				
Rearview camera	✓				
Right-side view camera		✓ ⁵			
Right-side view mirror		✓			
360° visibility		✓			
Lockable disconnect switch	✓				
Ground-level engine shutoff switch	✓				
Right-hand handrail and handhold	✓				
Signaling/warning horn	✓				
Swing alarm		✓			
Service platform with anti-skid plate and countersunk bolts	✓				
Hydraulic lock out lever neutralizes all controls	✓				
Travel alarm	✓				
Integrated vehicle health management system	✓				
SERVICE AND MAINTENANCE					
Side entry to service platform	✓				
Grouped location of engine oil and fuel filters	✓				
S·O·S SM ports	✓				
Ground-level and platform-level dipstick for engine oil	✓				

⁵Mandatory for Hong Kong

326 Dealer Installed Kits and Attachments

Dealer Installed Kits and Attachments

Attachments may vary. Consult your Cat dealer for details.

CAB	GUARDS	ELECTRICAL
<ul style="list-style-type: none">• Lower radial wiper• Rain protector plus cab light cover)• Laminated P5A glass front windshield• Left Hand (LH)/Right Hand (RH) electrical pedal for tool control• Armrest kit• Seat with 4-point seatbelt capability• Dual exit rear window kit• 75 mm (3") retractable seat belt	<ul style="list-style-type: none">• HD swivel guard 16 mm (0.63") thick• Side rubber bumper guard• Operator Protective Guards (not compatible with cab light cover, rain protector)• Mesh guard full front (not compatible with cab light cover, rain protector)• Mesh guard lower half front• Cab vandalism guard	<ul style="list-style-type: none">• Jump start wiring
SAFETY AND SECURITY <ul style="list-style-type: none">• Cat Detect – People Detection		

Cab Options

	Comfort	Deluxe
ROPS	●	●
OPG	○	○
High-resolution 203 mm (8") LCD touchscreen monitor	●	●
High-resolution 254 mm (10") LCD touchscreen monitor*	○	○
Auto bi-level air conditioner	●	●
Jog dial and shortcut keys for monitor control	●	●
Keyless push-to-start engine control	●	●
Height-adjustable console, infinite with no tool	X	●
Height-adjustable console, three steps with tool	●	X
Tilt-up left-side console	X	●
Fixed left-side console	●	X
Mechanical-suspension seat	●	X
Heated air-suspension seat	X	●
51 mm (2") seat belt	●	●
Monitor integrated Bluetooth radio with USB/Auxiliary ports	●	●
12V DC outlets	●	●
Document storage	●	●
Overhead storage and rear storage with nets	X	●
Beverage holder	●	●
Cup holder	●	●
Openable two-piece front window	●	●
Rear window emergency exit	●	●
Radial wiper with washer	●	●
Openable polycarbonate skylight hatch	X	●
Openable steel hatch	●	X
LED dome light	●	●
Roof sunscreen	X	●
Roller front sunscreen	●	●
Roller rear sunscreen	○	○
Washable floor mat	●	●
Beacon ready	●	●
Auxiliary relay	X	○

*For use with 360° visibility

● Standard

○ Optional

X Not available

326 Environmental Declaration

The following information applies to the machine at the time of final manufacture as configured for sale in the regions covered in this document. The content of this declaration is valid as of the date issued; however, content related to machine features and specifications are subject to change without notice. For additional information, please see the machine's Operation and Maintenance Manual.

For more information on sustainability in action and our progress, please visit <https://www.caterpillar.com/en/company/sustainability>.

Engine

- The Cat® C7.1 engine emits equivalent to U.S. EPA Tier 3 and EU Stage IIIA.
 - Cat engines are compatible with diesel fuel blended with the following lower-carbon intensity fuels** up to:
 - ✓ 100% biodiesel FAME (fatty acid methyl ester)*
 - ✓ 100% renewable diesel, HVO (hydrogenated vegetable oil) and GTL (gas-to-liquid) fuels
- Refer to guidelines for successful application. Please consult your Cat dealer or "Caterpillar Machine Fluids Recommendations" (SEBU6250) for details.
- *For use of blends higher than 20% biodiesel, consult your Cat dealer.*
- **Tailpipe greenhouse gas emissions from lower-carbon intensity fuels are essentially the same as traditional fuels.*

Air Conditioning System

- The air conditioning system on this machine contains the fluorinated greenhouse gas refrigerant R134a (Global Warming Potential = 1430). The system contains 0.85 kg (1.9 lb) of refrigerant which has a CO₂ equivalent of 1.216 metric tonnes (1.340 tons).

Paint

- Based on best available knowledge, the maximum allowable concentration, measured in parts per million (PPM), of the following heavy metals in paint are:
 - Barium < 0.01%
 - Cadmium < 0.01%
 - Chromium < 0.01%
 - Lead < 0.01%

Sound Performance

ISO 6395:2008 (external) – 104 dB(A)

ISO 6396:2008 (inside cab) – 70 dB(A)

- External Sound – The spectator sound power level is measured according to the test procedures and conditions specified in ISO 6395:2008 for a Cat machine that is properly equipped and maintained. The measurements were conducted at 70% of the maximum engine cooling fan speed.
- Internal Sound – The operator sound pressure level is measured according to the test procedures and conditions specified in ISO 6396:2008 for a cab offered by Caterpillar, when properly installed and maintained and tested with the door and windows closed. The measurements were conducted at 70% of the maximum engine cooling fan speed.
- Hearing protection may be needed when operating with an open operator station and cab (when not properly maintained for doors/windows open) for extended periods or in noisy environment(s).

Oils and Fluids

- Caterpillar factory fills with ethylene glycol coolants. Cat Diesel Engine Antifreeze/Coolant (DEAC) and Cat Extended Life Coolant (ELC) can be recycled. Consult your Cat dealer for more information.
- Cat Bio HYDO™ Advanced is an EU Ecolabel approved biodegradable hydraulic oil.
- Additional fluids are likely to be present, please consult the Operations and Maintenance Manual or the Application and Installation guide for complete fluid recommendations and maintenance intervals.

Features and Technology

- The following features and technology may contribute to fuel savings and/or carbon reduction. Features may vary. Consult your Cat dealer for details.
 - Advanced hydraulic systems balance power and efficiency
 - Smart mode matches machine power to digging requirements automatically
 - Utilizing Cat technologies can help increase operating efficiencies
 - Extended service intervals help decrease maintenance costs
 - Programmable high-efficiency cooling fans run only when needed
 - The latest hydraulic oil filter provides longer life with a 3,000-hour replacement interval

For more complete information on Cat products, dealer services, and industry solutions, visit us on the web at www.cat.com

© 2025 Caterpillar
All rights reserved

Materials and specifications are subject to change without notice. Featured machines in photos may include additional equipment. See your Cat dealer for available options.

CAT, CATERPILLAR, LET'S DO THE WORK, VisionLink, their respective logos, "Caterpillar Corporate Yellow," the "Power Edge" and Cat "Modern Hex" trade dress as well as corporate and product identity used herein, are trademarks of Caterpillar and may not be used without permission.

AEXQ3996-01 (12-2025)
Replaces: AEXQ3996-00
Build Number: 07H
(Hong Kong, Taiwan)

