



320 GC

Hydraulic Excavator

Technical Specifications

Configurations and features may vary by region. Please consult your Cat® dealer for availability in your area.

Table of Contents

320 GC Hydraulic Excavator

Specifications	2	Operating Weights and Ground Pressures.....	3
Engine	2	Major Component Weights	4
Swing Mechanism	2	Dimensions.....	5
Weights.....	2	Working Ranges	6
Track	2	Reach Boom Lift Capacities	7
Drive	2	Bucket Specifications and Compatibility	9
Hydraulic System	2	Attachments Offering Guide	10
Service Refill Capacities	2	Standard and Optional Equipment	13
Standards.....	3	Dealer Installed Kit and Attachments	15
Sound Performance	3	320 GC Environmental Declaration	16

320 GC Forestry Hydraulic Excavator

Key Features and Benefits	17	Standards.....	18
Specifications	18	Sound Performance	18
Engine	18	Operating Weights and Ground Pressures.....	19
Swing Mechanism	18	Major Component Weights	19
Weights.....	18	Dimensions.....	20
Track	18	Working Ranges	21
Drive	18	HD Reach Boom Lift Capacities	22
Hydraulic System	18	HD Straight Boom Lift Capacities.....	23
Service Refill Capacities	18	Standard and Optional Equipment	25



320 GC Hydraulic Excavator Specifications

Engine

Engine Model	Cat® C4.4	
Net Power		
ISO 9249	107 kW	143 hp
ISO 9249 (DIN)	145 hp (metric)	
Engine Power		
ISO 14396	108 kW	145 hp
ISO 14396 (DIN)	147 hp (metric)	
Bore	105 mm	4 in
Stroke	127 mm	5 in
Displacement	4.4 L	269 in ³
Biodiesel Capability	Up to B20 ⁽¹⁾	

- Meets Brazil MAR-1 emission standards, equivalent to U.S. EPA Tier 3 and EU Stage IIIA.
- Recommended for use up to 4500 m (14,764 ft) altitude with engine power derate above 3000 m (9,842.5 ft).
- Advertised power is tested per the specified standard in effect at the time of manufacture.
- Net power advertised is the power available at the flywheel when the engine is equipped with fan, air intake system, exhaust system and alternator.
- Engine speed at 2,000 rpm.

⁽¹⁾Cat engines are compatible with diesel fuel blended with the following lower-carbon intensity fuels** up to:

- ✓ 100% biodiesel FAME (fatty acid methyl ester)*
- ✓ 100% renewable diesel, HVO (hydrotreated vegetable oil) and GTL (gas-to-liquid) fuels

Refer to guidelines for successful application. Please consult your Cat dealer or “Caterpillar Machine Fluids Recommendations” (SEBU6250) for details.

*For use of blends higher than 20% biodiesel, consult your Cat dealer.

**Tailpipe greenhouse gas emissions from lower-carbon intensity fuels are essentially the same as traditional fuels.

Swing Mechanism

Swing Speed	11.25 rpm	
Maximum Swing Torque	74.4 kN·m	54,900 lbf·ft

Weights

Operating Weight	20 400 kg	45,000 lb
------------------	-----------	-----------

- Medium undercarriage, Reach boom, R2.9 (9'6") stick, General Duty (GD) 1.0 m³ (1.31 yd³) bucket, 600 mm (24") triple grouser shoes, and 3700 kg (8,200 lb) counterweight.

Track

Standard Track Shoes Width	600 mm	24 in
Optional Track Shoes Width	790 mm	31 in
Number of Shoes Each Side	47	
Number of Track Rollers (each side)	7	
Number of Carrier Rollers (each side)	2	

Drive

Gradeability	35°/70%	
Maximum Travel Speed	5.7 km/h	3.5 mph
Maximum Drawbar Pull	206 kN	46,311 lbf

Hydraulic System

Main System – Maximum Flow – Implement	429 L/min (215 × 2 pumps)	113 gal/min (57 × 2 pumps)
Maximum Pressure – Equipment	35 000 kPa	5,075 psi
Maximum Pressure – Travel	34 300 kPa	4,974 psi
Maximum Pressure – Swing	25 000 kPa	3,625 psi
Boom Cylinder – Bore	120 mm	5 in
Boom Cylinder – Stroke	1260 mm	50 in
Stick Cylinder – Bore	135 mm	5 in
Stick Cylinder – Stroke	1504 mm	59 in
Bucket Cylinder – Bore	115 mm	5 in
Bucket Cylinder – Stroke	1104 mm	43 in

Service Refill Capacities

Fuel Tank Capacity	345 L	86.6 gal
Cooling System	25 L	6.6 gal
Engine Oil	15 L	4.0 gal
Swing Drive	12 L	3.2 gal
Final Drive (each)	4 L	1.1 gal
Hydraulic System (including tank)	234 L	61.8 gal
Hydraulic Tank	115 L	30.4 gal

320 GC Hydraulic Excavator Specifications

Standards

Brakes	ISO 10265:2008
Cab/Rollover Protective Structure (ROPS)	ISO 12117-2:2008
Cab/Operator Protective Guards (OPG) (optional)	ISO 10262:1998 Level II

Sound Performance

ISO 6395:2008 (external)	99 dB(A)
ISO 6396:2008 (inside cab)	70 dB(A)

- Hearing protection may be needed when operating with an open operator station and cab (when not properly maintained or doors/windows open) for extended periods or in a noisy environment.

Operating Weights and Ground Pressures

	600 mm (24") Triple Grouser Shoes		790 mm (31") Triple Grouser Shoes	
	Weight	Ground Pressure	Weight	Ground Pressure
	kg (lb)	kPa (psi)	kg (lb)	kPa (psi)
Base Machine Configurations				
Base Frame with Track Rollers and Carrier Rollers				
3700 kg (8,200 lb) Counterweight + Medium Undercarriage Base Machine				
Reach Boom + R2.9 (9'6") Stick + 1.0 m ³ (1.31 yd ³) GD Bucket	20 400 (45,000)	44.7 (6.5)	21,100 (46,500)	35.1 (5.1)

All operating weights include a 90% fuel tank with 75 kg (165 lb) operator.

320 GC Hydraulic Excavator Specifications

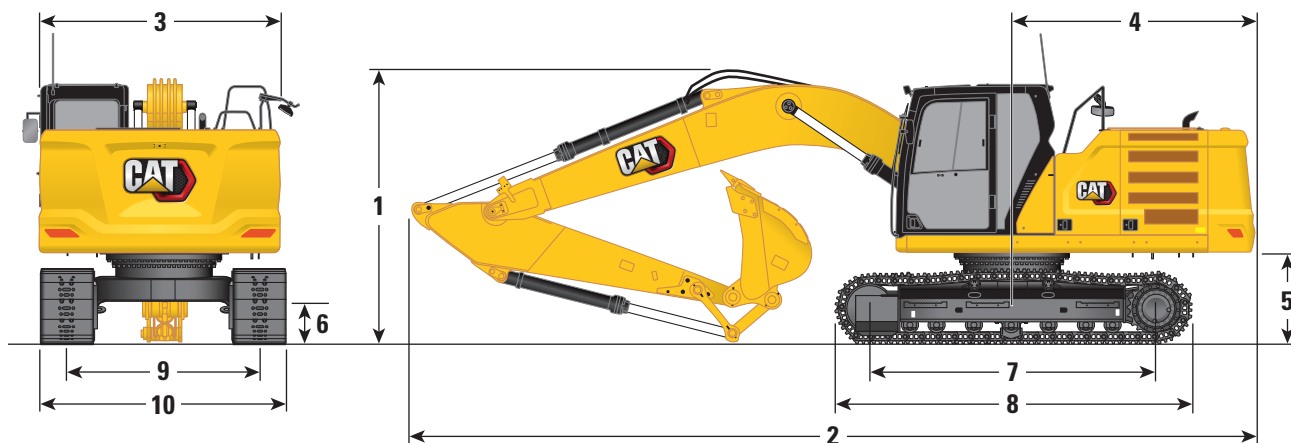
Major Component Weights

	kg	lb
Base Machine (with 3700 kg [8,200 lb] counterweight, standard swing frame, standard base frame with track rollers and standard carrier rollers for medium undercarriage, without boom cylinders – does not include 90% fuel and 75 kg [165 lb] operator)	13 740	30,300
Track Shoes:		
600 mm (24") Width, 8.5 mm (0.33") Thick Triple Grouser Track Shoes	2500	5,500
790 mm (31") Width, 10 mm (0.39") Thick Triple Grouser Track Shoes	3220	7,100
Two Boom Cylinders	340	700
Weight of 90% Fuel Tank and 75 kg (165 lb) Operator	310	700
Counterweight:		
3700 kg (8,200 lb) Counterweight	3700	8,200
Swing Frame:		
Standard Swing Frame	1910	4,150
Undercarriage:		
Standard Base Frame with HD Track Rollers and Standard Carrier Rollers	4140	9,100
Booms (including lines, pins, stick cylinder):		
Reach Boom 5.7 m (18'8")	1690	3,700
Stick (including lines, pins, bucket cylinder, bucket linkage):		
Reach Stick R2.9B1 (9'6")	1080	2,400
Buckets (without linkage):		
1.0 m ³ (1.31 yd ³) GD	730	1,670
1.16 m ³ (1.52 yd ³) GD	850	1,870

320 GC Hydraulic Excavator Specifications

Dimensions

All dimensions are approximate and may vary depending on bucket selection.



Boom Option

Reach Boom
5.7 m (18'8")

Stick Option

Reach Stick
R2.9B1 (9'6")

1 Machine Height:

Top of Cab Height	2960 mm	9'9"
Top of OPG Height	3100 mm	10'2"
Handrail Height	2950 mm	9'8"
With Boom/Stick/Bucket Installed	3160 mm	10'4"
With Boom/Stick Installed	2910 mm	9'7"
With Boom Installed	2480 mm	8'2"

2 Machine Length:

With Boom/Stick/Bucket Installed	9530 mm	31'3"
With Boom/Stick Installed	9500 mm	31'2"
With Boom Installed	8450 mm	27'9"

3 Upperframe Width

2780 mm 9'1"

4 Tail Swing Radius

2830 mm 9'3"

5 Counterweight Clearance

1050 mm 3'5"

6 Ground Clearance

470 mm 1'7"

7 Length to Center of Rollers

3450 mm 11'4"

8 Track Length

4250 mm 13'11"

9 Track Gauge

2380 mm 7'10"

10 Undercarriage Width:

600 mm (24") Shoes	2980 mm	9'9"
790 mm (31") Shoes	3080 mm	10'1"

Bucket Type

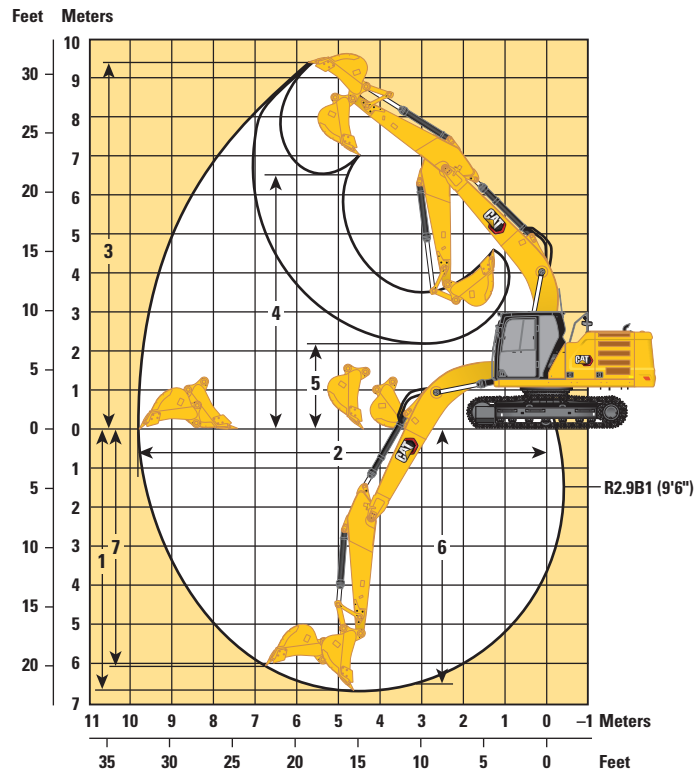
GD

Bucket Capacity	1.00 m ³	1.31 yd ³
Bucket Tip Radius	1580 mm	5'2"

320 GC Hydraulic Excavator Specifications

Working Ranges

All dimensions are approximate and may vary depending on bucket selection.

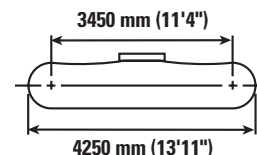
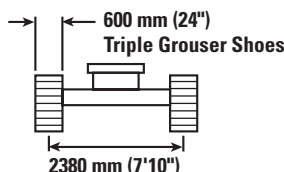
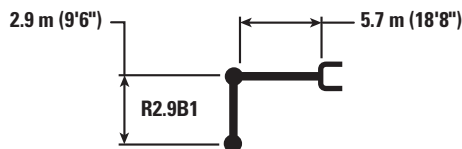















Boom Option	Reach Boom 5.7 m (18'8")	
Stick Option	Reach Stick R2.9B1 (9'6")	
1 Maximum Digging Depth	6630 mm	21'9"
2 Maximum Reach at Ground Line	9770 mm	32'
3 Maximum Cutting Height	9440 mm	30'11"
4 Maximum Loading Height	6580 mm	21'7"
5 Minimum Loading Height	2260 mm	7'5"
6 Maximum Depth Cut for 2440 mm (8'0") Level Bottom	6460 mm	21'2"
7 Maximum Vertical Wall Digging Depth	6010 mm	19'8"
Bucket Digging Force (ISO)	129 kN	29,007 lbf
Stick Digging Force (ISO)	99 kN	22,301 lbf
Bucket Type	GD	
Bucket Capacity	1.0 m ³	1.31 yd ³
Bucket Tip Radius	1560 mm	5'1"

320 GC Hydraulic Excavator Specifications

Reach Boom Lift Capacities – Counterweight: 3700 kg (8,200 lb) – with Bucket Linkages, without Bucket

Medium Undercarriage



		1500 mm/5'0"		3000 mm/10'0"		4500 mm/15'0"		6000 mm/20'0"		7500 mm/25'0"				mm in
														
7500 mm 300 in	kg lb							*4300	*4300			*3750	*3750	6150
6000 mm 240 in	kg lb							*4950	4950			*3450	*3450	7290
4500 mm 180 in	kg lb							*5450	4800	4850	3350	*3400	3000	7990
3000 mm 120 in	kg lb					*7950	6950	*6250	4550	4750	3250	*3450	2750	8360
1500 mm 60 in	kg lb					*9600	6450	6450	4300	4600	3150	*3700	2650	8450
0 mm 0 in	kg lb			*5750	*5750	9750	6200	6250	4150	4550	3050	3950	2700	8260
-1500 mm -60 in	kg lb	*6150	*6150	*10 000	*10 000	9650	6100	6150	4100	4500	3050	4300	2900	7780
-3000 mm -120 in	kg lb	*10 600	*10 600	*14 100	11 950	9700	6150	6200	4100			5050	3400	6950
-4500 mm -180 in	kg lb	*23,750	*23,750	*30,550	25,600	20,850	13,250	13,350	8,850			11,200	7,550	280
				*11 250	*11 250	*8100	6350					*6100	4700	5600
				*24,050	*24,050	*17,200	13,700					*13,400	10,600	220



ISO 10567:2007



*Indicates that the load is limited by hydraulic lifting capacity rather than tipping load. The above loads are in compliance with hydraulic excavator lift capacity standard ISO 10567:2007. They do not exceed 87% of hydraulic lifting capacity or 75% of tipping load. Weight of all lifting accessories must be deducted from the above lifting capacities. Lifting capacities are based on the machine standing on a firm, uniform supporting surface. The use of a work tool attachment point to handle/lift objects, could affect the machine lift performance.

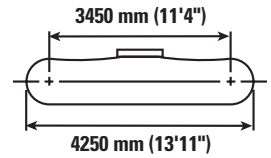
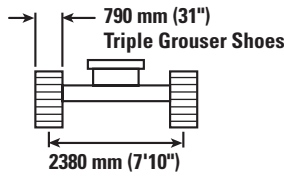
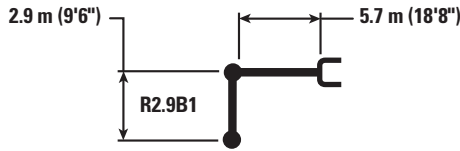
Lift capacity stays with ±5% for all available track shoes.

Always refer to the appropriate Operation and Maintenance Manual for specific product information.

320 GC Hydraulic Excavator Specifications

Reach Boom Lift Capacities – Counterweight: 3700 kg (8,200 lb) – with Bucket Linkages, without Bucket

Medium Undercarriage



		1500 mm/5'0"		3000 mm/10'0"		4500 mm/15'0"		6000 mm/20'0"		7500 mm/25'0"		mm in		
7500 mm 300 in	kg lb							*4300	*4300			*3750 *8,300	*3750 *8,300	6150 240
6000 mm 240 in	kg lb							*4950 *10,850	*4950 *10,850			*3450 *7,600	*3450 *7,600	7290 290
4500 mm 180 in	kg lb							*5450 *11,800	4950 10,600	5000 10,750	3500 7,450	*3400 *7,450	3150 6,900	7990 320
3000 mm 120 in	kg lb					*7950 *17,050	7200 15,450	*6250 *13,500	4700 10,150	4900 10,550	3400 7,250	*3450 *7,600	2850 6,250	8360 330
1500 mm 60 in	kg lb					*9600 *20,700	6700 14,400	6650 14,300	4500 9,650	4800 10,300	3250 7,000	*3700 *8,050	2750 6,050	8450 340
0 mm 0 in	kg lb			*5750 *13,250	*5750 *13,250	10 100 21,650	6400 13,800	6500 13,900	4300 9,250	4700 10,100	3200 6,850	*4050 *8,950	2800 6,150	8260 330
-1500 mm -60 in	kg lb	*6150 *13,750	*6150 *13,750	*10 000 *22,650	*10 000 *22,650	10 000 21,450	6350 13,650	6400 13,750	4250 9,100	4650 10,050	3150 6,800	4450 9,800	3000 6,650	7780 310
-3000 mm -120 in	kg lb	*10 600 *23,750	*10 600 *23,750	*14 100 *30,550	12 350 26,500	*9950 *21,500	6400 13,750	6450 13,850	4250 9,200			5250 11,600	3550 7,850	6950 280
-4500 mm -180 in	kg lb			*11 250 *24,050	*11 250 *24,050	*8100 *17,200	6600 14,200					*6100 *13,400	4900 11,000	5600 220



ISO 10567:2007



*Indicates that the load is limited by hydraulic lifting capacity rather than tipping load. The above loads are in compliance with hydraulic excavator lift capacity standard ISO 10567:2007. They do not exceed 87% of hydraulic lifting capacity or 75% of tipping load. Weight of all lifting accessories must be deducted from the above lifting capacities. Lifting capacities are based on the machine standing on a firm, uniform supporting surface. The use of a work tool attachment point to handle/lift objects, could affect the machine lift performance.

Lift capacity stays with ±5% for all available track shoes.

Always refer to the appropriate Operation and Maintenance Manual for specific product information.

320 GC Hydraulic Excavator Specifications

Bucket Specifications and Compatibility

									Undercarriage	Medium
									Counterweight	3700 kg (8,200 lb)
	Linkage	Width		Capacity		Weight		Fill	Reach Boom	
		mm	in	m ³	yd ³	kg	lb	%	R2.9 (9'6")	
Pin-On (No Quick Coupler)										
General Duty	B	1050	42	1.00	1.31	737	1,624	100	●	
	B	1050	42	1.16	1.52	848	1,869	100	⊖	
Heavy Duty	B	1050	42	1.00	1.31	892	1,967	100	⊙	
	B	1200	48	1.19	1.56	928	2,046	100	⊖	
Heavy Duty Spade	B	1350	54	1.40	1.83	1025	2,260	100	○	
Severe Duty	B	1200	48	1.19	1.56	1038	2,289	90	⊖	
Severe Duty Spade	B	1200	48	1.20	1.57	1011	2,229	90	⊖	
Maximum load with pin-on (payload + bucket)									kg	2425
									lb	5,346
With Cat Pin Grabber Coupler										
General Duty	B	1050	42	1.00	1.31	737	1,624	100	⊖	
	B	1050	42	1.16	1.52	848	1,869	100	○	
Heavy Duty	B	1050	42	1.00	1.31	892	1,967	100	○	
	B	1200	48	1.19	1.56	928	2,046	100	○	
Heavy Duty Spade	B	1350	54	1.40	1.83	1025	2,260	100	◇	
Severe Duty	B	1200	48	1.19	1.56	1038	2,289	90	○	
Severe Duty Spade	B	1200	48	1.20	1.57	1011	2,229	90	○	
Maximum load with coupler (payload + bucket)									kg	2006
									lb	4,423

The above loads are in compliance with hydraulic excavator standard EN474-5:2006+A3:2013, they do not exceed 87% of hydraulic lifting capacity or 75% of tipping capacity with front linkage fully extended at ground line with bucket curled.

Capacity based on ISO 7451:2007.

Bucket weight with General Duty tips.

Maximum Material Density:

- 2100 kg/m³ (3,500 lb/yd³)
- ⊙ 1800 kg/m³ (3,000 lb/yd³)
- ⊖ 1500 kg/m³ (2,500 lb/yd³)
- 1200 kg/m³ (2,000 lb/yd³)
- ◇ 900 kg/m³ (1,500 lb/yd³)

Caterpillar recommends using appropriate work tools to maximize the value customers receive from our products. Use of work tools, including buckets, which are outside of Caterpillar's recommendations or specifications for weight, dimensions, flows, pressures, etc. may result in less-than-optimal performance, including but not limited to reductions in production, stability, reliability, and component durability. Improper use of a work tool resulting in sweeping, prying, twisting and/or catching of heavy loads will reduce the life of the boom and stick.

320 GC Hydraulic Excavator Specifications

Attachments Offering Guide

Not all Attachments are available in all regions. Consult your Cat dealer for configurations available in your region.

Match
 * Working range front only
 1800 kg/m³ (3,000 lb/yd³)
 1200 kg/m³ (2,000 lb/yd³)

PIN-ON ATTACHMENTS

Undercarriage		Medium
Counterweight		3700 kg (8,200 lb)
Boom Type		Reach
Stick Length		R2.9 (9'6")
Hydraulic Hammers	H115 GC	✓
	H115 GC S	✓
	H115 S	✓
	H120 GC	✓
	H120 GC Side Mount	✓
	H120 GC S	✓
	H120 S	✓
	H130 GC	✓
	H130 GC S	✓
Multi-Processors	H130 S	✓
	MP318 Concrete Cutter Jaw	✓
	MP318 Demolition Jaw	✓
	MP318 Pulverizer Jaw	✓
	MP318 Shear Jaw	✓
MP318 Universal Jaw	✓	
Demolition and Sorting Grapples	G318	✓
Mobile Scrap and Demolition Shears	S3025 Flat Top	✓*
Pulverizers	P218 Secondary Pulverizer	✓
	P318 Primary Pulverizer	✓
Compactors (Vibratory Plate)	CVP110	✓
Rotary Cutters	RC20	✓
Orange Peel Grapples	GSH420-500	●
	GSH420-600	●
	GSH420-750	●
	GSH425-750	○
	GSH520-500	●
	GSH520-600	●
	GSH520-750	○

(continued on next page)

320 GC Hydraulic Excavator Specifications

Attachments Offering Guide *(continued)*

Not all Attachments are available in all regions. Consult your Cat dealer for configurations available in your region.

Match * Working range front only No Match

CAT PIN GRABBER COUPLER ATTACHMENTS

Undercarriage		Medium
Counterweight		3700 kg (8,200 lb)
Boom Type		Reach
Stick Length		R2.9 (9'6")
Hydraulic Hammers	H115 GC	✓
	H115 GC S	✓
	H115 S	✓
	H120 GC	✓*
	H120 GC Side Mount	✓
	H120 GC S	✓
	H120 S	✓
	H130 S	✓
Multi-Processors	MP318 Concrete Cutter Jaw	
	MP318 Demolition Jaw	
	MP318 Shear Jaw	✓*
	MP318 Universal Jaw	
Demolition and Sorting Grapples	G318	
Compactors (Vibratory Plate)	CVP110	✓
Rotary Cutters	RC20	✓

S70 DEDICATED COUPLER ATTACHMENTS

Undercarriage		Medium
Counterweight		3700 kg (8,200 lb)
Boom Type		Reach
Stick Length		R2.9 (9'6")
Hydraulic Hammers	H115 GC	✓
	H115 GC S	✓
	H115 S	✓
	H120 GC	✓
	H120 GC S	✓
	H120 S	✓
	H130 S	✓
Multi-Processors	MP318 Concrete Cutter Jaw	✓*
	MP318 Demolition Jaw	✓*
	MP318 Pulverizer Jaw	
	MP318 Shear Jaw	✓
	MP318 Universal Jaw	✓*
Demolition and Sorting Grapples	G318	✓*
Pulverizers	P218 Secondary Pulverizer	
	P318 Primary Pulverizer	
Compactors (Vibratory Plate)	CVP110	✓
Rotary Cutters	RC20	✓

(continued on next page)

320 GC Hydraulic Excavator Specifications

Attachments Offering Guide (continued)

Not all Attachments are available in all regions. Consult your Cat dealer for configurations available in your region.

Match
 * Working range front only
 No Match

HCS70 DEDICATED COUPLER ATTACHMENTS

Undercarriage		Medium
Counterweight		3700 kg (8,200 lb)
Boom Type		Reach
Stick Length		R2.9 (9'6")
Hydraulic Hammers	H115 S	✓
	H120 GC	✓*
	H120 S	✓
	H130 S	✓
Multi-Processors	MP318 Concrete Cutter Jaw	
	MP318 Demolition Jaw	
	MP318 Shear Jaw	✓*
	MP318 Universal Jaw	
Demolition and Sorting Grapples	G318	
Compactors (Vibratory Plate)	CVP110	✓
Rotary Cutters	RC20	✓

HCS70/55 DEDICATED COUPLER ATTACHMENTS

Undercarriage		Medium
Counterweight		3700 kg (8,200 lb)
Boom Type		Reach
Stick Length		R2.9 (9'6")
Hydraulic Hammers	H115 S	✓
	H120 GC	✓*
	H120 S	✓
	H130 S	✓
Multi-Processors	MP318 Concrete Cutter Jaw	
	MP318 Demolition Jaw	
	MP318 Shear Jaw	✓*
Demolition and Sorting Grapples	G318	
Compactors (Vibratory Plate)	CVP110	✓
Rotary Cutters	RC20	✓

HCS70/55 DEDICATED COUPLER ATTACHMENTS

Undercarriage		Medium
Counterweight		3700 kg (8,200 lb)
Boom Type		Reach
Mobile Scrap and Demolition Shears	S2050	✓
	S3035 Flat Top	✓

Standard and Optional Equipment

Standard and optional equipment may vary. Consult your Cat dealer for details.

	Standard	Optional		Standard	Optional
BOOM, STICKS AND LINKAGES			CAT TECHNOLOGY		
5.7 m (18'8") Reach boom	✓		VisionLink®	✓ ¹	
2.9 m (9'6") Reach stick	✓		VisionLink Productivity		✓ ²
Bucket linkage, B1-family with lifting eye	✓		Remote Flash	✓	
CAB			ELECTRICAL SYSTEM		
ROPS	✓		1,000 CCA maintenance-free batteries (×2)	✓	
OPG		✓	Centralized electrical disconnect switch	✓	
High-resolution 203 mm (8") LCD touchscreen monitor	✓		Programmable time-delay LED working lights	✓	
Auto bi-level air conditioner	✓		LED chassis light and Left Hand (LH) boom light – 1,800 lumens	✓	
Keyless push-to-start engine control	✓		LED chassis light, LH and Right Hand (RH) boom lights, cab lights – 1,800 lumens		✓
Height-adjustable console, three steps with tool	✓		ENGINE		
Fixed left-side console	✓		Cat C4.4 single turbo diesel engine	✓	
Mechanical-suspension seat	✓		Two selectable power modes	✓	
51 mm (2") seat belt	✓		Automatic engine speed control	✓	
Console mounted Bluetooth® radio with USB ports	✓		Automatic engine idle shutdown	✓	
24V DC outlet	✓		Work up to 3000 m (9,842.5 ft) above sea level without engine power de-rating	✓	
Document storage	✓		52° C (125° F) high-ambient cooling capacity	✓	
Overhead storage and rear storage with nets	✓		Cold starting capability for –32° C (–25° F)	✓	
Beverage holder	✓		Double element air filter with integrated pre-cleaner	✓	
Cup holder	✓		Electric fuel priming pump	✓	
Openable two-piece front window	✓		Electric cooling fans with auto-reverse function	✓	
Rear window emergency exit	✓				
Radial wiper with washer	✓				
Openable steel hatch	✓				
LED dome light	✓				
Roller front sunscreen	✓				
Roller rear sunscreen		✓			
Washable floor mat	✓				
Beacon ready	✓				

(continued on next page)

¹Provides core telematics data to manage health, maintenance insights, and condition monitoring. Other plans available for more comprehensive data reporting. Consult your Cat dealer for details.

²VisionLink subscription required. Consult your Cat dealer for details.

320 GC Standard and Optional Equipment

Standard and Optional Equipment (continued)

Standard and optional equipment may vary. Consult your Cat dealer for details.

	Standard	Optional		Standard	Optional
HYDRAULIC SYSTEM			SERVICE AND MAINTENANCE		
Boom and stick regeneration circuits	✓		Scheduled Oil Sampling (S·O·S SM) ports	✓	
Electronic main control valve	✓		Grouped location for engine oil and fuel filters	✓	
Auto warm up	✓		Ground-level second dipstick for engine oil	✓	
Auto two-speed travel	✓		Radiator screen		✓
Boom and stick drift reduction valve	✓		Side entry to service platform	✓	
Element type main hydraulic filter	✓		Integrated vehicle health management system	✓	
Three button joysticks	✓		UNDERCARRIAGE AND STRUCTURES		
Slider joysticks		✓	Medium undercarriage	✓	
Tandem type electronic main pump	✓		Grease lubricated track links	✓	
Hammer return filter circuit		✓	600 mm (24") triple grouser track shoes		✓
Basic Tool Control (one pump, one way high-pressure flow)		✓	790 mm (31") triple grouser track shoes		✓
Advanced Tool Control (two pump, one/two way high-pressure flow)		✓	Center track guiding guard	✓	
Quick coupler circuit for Cat pin grabber		✓	Bottom guards	✓	
Operating pattern (four way)		✓	Swivel guard		✓
Standard fluids	✓		Travel motor guards	✓	
Multi viscous hydraulic oil	✓		3700 kg (8,200 lb) counterweight	✓	
Arctic fluids (include grease, engine oil, hydraulic oil)		✓	Tie-down points on base frame	✓	
SAFETY AND SECURITY					
Auto hammer stop	✓				
Rearview camera	✓				
Right-hand-side view mirror		✓			
Right-hand-side view camera		✓			
Neutral lever (lock out) for all controls	✓				
Anti-skid plate and countersunk bolts on service platform	✓				
Ground-level accessible secondary engine shutoff switch in cab	✓				
Lockable disconnect switch	✓				
Right hand handrail and handhold	✓				
Swing alarm		✓			
Signaling/warning horn	✓				
Inspection lighting		✓			

Dealer Installed Kit and Attachments

Attachments may vary. Consult your Cat dealer for details.

CAB

- Lower radial wiper
- Rain protector plus cab light cover
- Polycarbonate roof hatch
- Sun visor, slider
- Laminated P5A glass front windshield
- LH/RH electrical pedal for tool control
- Armrest kit
- Dual exit rear window kit
- 75 mm (3") retractable seat belt
- Lunch box net
- Rear storage
- Tool box

GUARDS

- Swivel guard
- Side rubber bumper guard
- Operator Protective Guards
- Mesh guard full front
- Mesh guard half front
- Full protecting vandalism guard

MAINTENANCE

- Duct ready kit

SAFETY AND SECURITY

- Bluetooth receiver

320 GC Environmental Declaration

The following information applies to the machine at the time of final manufacture as configured for sale in the regions covered in this document. The content of this declaration is valid as of the date issued; however, content related to machine features and specifications are subject to change without notice. For additional information, please see the machine's Operation and Maintenance Manual.

For more information on sustainability in action and our progress, please visit <https://www.caterpillar.com/en/company/sustainability>.

Engine

- The Cat® C4.4 engine meets Brazil MAR-1 emission standards, equivalent to U.S. EPA Tier 3 and EU Stage IIIA.
- Cat engines are compatible with diesel fuel blended with the following lower-carbon intensity fuels** up to:
 - ✓ 100% biodiesel FAME (fatty acid methyl ester) *
 - ✓ 100% renewable diesel, HVO (hydrogenated vegetable oil) and GTL (gas-to-liquid) fuels

Refer to guidelines for successful application. Please consult your Cat dealer or "Caterpillar Machine Fluids Recommendations" (SEBU6250) for details.

**For use of blends higher than 20% biodiesel, consult your Cat dealer.*

***Tailpipe greenhouse gas emissions from lower-carbon intensity fuels are essentially the same as traditional fuels.*

Air Conditioning System

- The air conditioning system on this machine contains the fluorinated greenhouse gas refrigerant R134a (Global Warming Potential = 1430). The system contains 0.85 kg (1.9 lb) of refrigerant which has a CO₂ equivalent of 1.216 metric tonnes (1.340 tons).

Paint

- Based on best available knowledge, the maximum allowable concentration, measured in parts per million (PPM), of the following heavy metals in paint are:
 - Barium < 0.01%
 - Cadmium < 0.01%
 - Chromium < 0.01%
 - Lead < 0.01%

Sound Performance

ISO 6395:2008 (external) – 99 dB(A)

ISO 6396:2008 (inside cab) – 70 dB(A)

- Hearing protection may be needed when operating with an open operator station and cab (when not properly maintained or doors/windows open) for extended periods or in a noisy environment.

Oils and Fluids

- Caterpillar factory fills with ethylene glycol coolants. Cat Diesel Engine Antifreeze/Coolant (DEAC) and Cat Extended Life Coolant (ELC) can be recycled. Consult your Cat dealer for more information.
- Cat Bio HYDO™ Advanced is an EU Ecolabel approved biodegradable hydraulic oil.
- Additional fluids are likely to be present, please consult the Operations and Maintenance Manual or the Application and Installation guide for complete fluid recommendations and maintenance intervals.

Features and Technology

- The following features and technology may contribute to fuel savings and/or carbon reduction. Features may vary. Consult your Cat dealer for details.
 - Advanced hydraulic systems balance power and efficiency
 - Smart mode matches machine power to digging requirements automatically
 - Eco mode supports reduced fuel consumption for light applications
 - Extended service intervals help decrease maintenance costs
 - Programmable high-efficiency cooling fans run only when needed
 - The latest hydraulic oil filter provides longer life with a 3,000-hour replacement interval



320 GC

Forestry Hydraulic Excavator

The Cat® 320 GC Forestry Configuration provides premium performance and operating efficiency. The Cat C4.4 engine help lower fuel consumption, and longer maintenance intervals help reduce operating costs. The Severe Duty undercarriage features an 8-roller bottom, double supported carrier rollers, and 600 mm (24") double grouser track shoes. The ROPS comfort cab is fitted with 19 mm (.75 in) polycarbonate front window and 13 mm (.50 in) polycarbonate side windows.

Brazil only.

Efficient Performance

- Use onboard information systems to track operating costs, including fuel consumption and daily maintenance.
- The C4.4 engine can run on biodiesel up to B20 and meets Brazil MAR-1 emission standards, equivalent to U.S. EPA Tier 3 and EU Stage IIIA.
- Match the excavator to the job with power modes; let Smart mode automatically match engine and hydraulic power to your processor.
- Auxiliary hydraulic options give you the versatility to use a wide range of attachments.
- Don't let the temperature stop you from working. The excavator has a standard high-ambient temperature capability of 52° C (125° F) and cold start capability of -32° C (-25° F).

Operating Cost

- Do all daily maintenance at ground level.
- Check engine oil level quickly and safely with the ground-level engine oil dipstick; fill and check engine oil on top of the machine with a conveniently located second dipstick.
- Fuel filters are synchronized to be changed at 1,000 hours.
- Expect the latest air intake filter with pre-cleaner to last up to 1,000 hours.
- The hydraulic oil filter provides improved filtration performance, ant drain valves to keep oil clean when the filter is replaced, and longer life with a 3,000 hour replacement interval.
- High-efficiency cooling fans run only when needed; you can program intervals so they automatically reverse to keep cores clean without interrupting your work.
- S-O-S ports are on ground level, simplifying maintenance and allowing for quick, easy extraction of fluid samples for analysis.
- Remote Troubleshoot is a mobile application that allows your Cat dealer to perform diagnostic testing on your connected machine remotely to help ensure that issues are resolved quickly and with less downtime.
- Remote Flash is a mobile application that allows you to update onboard software without a technician being present, allowing you to initiate software updates when convenient, increasing your overall operating efficiency.
- VisionLink® provides actionable data insights for all assets – regardless of fleet size or equipment manufacturer.* Review equipment data from your desktop or mobile device to maximize uptime and optimize assets. Dashboards provide information such as hours, miles, location, idle time, and fuel utilization. Make informed decisions that lower costs, simplify maintenance, and improve safety and security on your jobsite.

Comfort and Simplicity

- Work effectively in the Comfort cab with automatic climate control.
- Start the engine with a push button; use a Bluetooth key fob, or the Operator ID passcode.
- Program your power mode and joystick preferences using Operator ID; the excavator will remember what you set each time you go to work.
- Navigate quickly on the standard high-resolution 203 mm (8") touchscreen monitor.
- Enjoy wide spacing between consoles for a more comfortable environment.
- Stow your gear with plenty of in-cab storage behind and beneath the seat, overhead, and in the consoles.
- Use the standard radio's USB ports and Bluetooth technology to connect personal devices and make hands-free calls.
- Not sure how a function works or how to maintain the excavator? Always have the operator's manual at your fingertips in the touchscreen monitor.

Safety

- Access 100 percent of daily maintenance points from ground level – no need for you to climb on top of the excavator.
- The cab meets ISO 12117-2:2008 Rollover Protective Structure (ROPS) and ISO 8084:2003 Operator Protective Structure (OPS) standards.
- 19 mm (3/4") front and 13 mm (1/2") side windows are made of strong polycarbonate plastic
- Enjoy great visibility to the stem, in each swing direction, and behind you with the help of smaller cab pillars, larger windows, and a flat engine hood design.
- The standard hydraulic lockout lever isolates all hydraulic and travel functions in the lowered position.
- Ground-level shutoff switch stops all fuel to the engine when activated and shuts down the machine.
- A rearview camera is standard.
- The right-hand service platform design provides easy, safe, and quick access to upper service platform; the service platform steps use antiskid punch plate to prevent slipping.

*Data field availability can vary by equipment manufacturer

320 GC Forestry Hydraulic Excavator Specifications

Engine

Engine Model	Cat® C4.4	
Net Power		
ISO 9249	107 kW	143 hp
ISO 9249 (DIN)	145 hp (metric)	
Engine Power		
ISO 14396	108 kW	145 hp
ISO 14396 (DIN)	147 hp (metric)	
Bore	105 mm	4 in
Stroke	127 mm	5 in
Displacement	4.4 L	269 in ³
Biodiesel Capability	Up to B20 ⁽¹⁾	

- Meets Brazil MAR-1 emission standards, equivalent to U.S. EPA Tier 3 and EU Stage IIIA.
- Recommended for use up to 4500 m (14,764 ft) altitude with engine power derate above 3000 m (9,842.5 ft).
- Advertised power is tested per the specified standard in effect at the time of manufacture.
- Net power advertised is the power available at the flywheel when the engine is equipped with fan, air intake system, exhaust system and alternator.
- Engine speed at 2,000 rpm.

⁽¹⁾Cat engines are compatible with diesel fuel blended with the following lower-carbon intensity fuels** up to:

- ✓ 100% biodiesel FAME (fatty acid methyl ester)*
- ✓ 100% renewable diesel, HVO (hydrotreated vegetable oil) and GTL (gas-to-liquid) fuels

Refer to guidelines for successful application. Please consult your Cat dealer or “Caterpillar Machine Fluids Recommendations” (SEBU6250) for details.

*For use of blends higher than 20% biodiesel, consult your Cat dealer.

**Tailpipe greenhouse gas emissions from lower-carbon intensity fuels are essentially the same as traditional fuels.

Swing Mechanism

Swing Speed	11.2 rpm	
Maximum Swing Torque	74.4 kN·m	54,900 lbf·ft

Weights

Operating Weight	21 000 kg	46,300 lb
------------------	-----------	-----------

- Long undercarriage, HD Reach boom, HD R2.9 (9'6") stick, 600 mm (24") double grouser shoes, and 3700 kg (8,200 lb) counterweight.

Track

Standard Track Shoes Width	600 mm	24 in
Number of Shoes (each side)	49	
Number of Track Rollers (each side)	8	
Number of Carrier Rollers (each side)	2	

Drive

Gradeability	35°/70%	
Maximum Travel Speed	5.7 km/h	3.5 mph
Maximum Drawbar Pull	206 kN	46,300 lbf

Hydraulic System

Main System – Maximum Flow – Implement	429 L/min (215 × 2 pumps)	113 gal/min (57 × 2 pumps)
Maximum Pressure – Equipment – Normal	35 000 kPa	5,100 psi
Maximum Pressure – Equipment – Lift Mode	38 000 kPa	5,500 psi
Maximum Pressure – Travel	34 300 kPa	5,000 psi
Maximum Pressure – Swing	25 000 kPa	4,000 psi
Boom Cylinder – Bore	120 mm	5 in
Boom Cylinder – Stroke	1260 mm	50 in
Stick Cylinder – Bore	135 mm	5 in
Stick Cylinder – Stroke	1504 mm	59 in
Bucket Cylinder – Bore	115 mm	5 in
Bucket Cylinder – Stroke	1104 mm	43 in

Service Refill Capacities

Fuel Tank Capacity	345 L	91.1 gal
Cooling System	25 L	6.6 gal
Engine Oil	15 L	4.0 gal
Swing Drive	5.5 L	1.5 gal
Final Drive (each)	5 L	1.3 gal
Hydraulic System (including tank)	234 L	61.8 gal
Hydraulic Tank	115 L	30.4 gal

Standards

Brakes	ISO 10265:2008
Operator Protective Structure (OPS)	ISO 8084:2003
Cab/ROPS	ISO 12117-2:2008
Cab/OPG (optional)	ISO 10262:1998 Level II

Sound Performance

ISO 6395:2008 (external)	99 dB(A)
ISO 6396:2008 (inside cab)	70 dB(A)

- Hearing protection may be needed when operating with an open operator station and cab (when not properly maintained or doors/windows open) for extended periods or in a noisy environment.

320 GC Forestry Hydraulic Excavator Specifications

Operating Weights and Ground Pressures

	600 mm (24") Double Grouser Shoes		600 mm (24") Triple Grouser Shoes	
	Weight	Ground Pressure	Weight	Ground Pressure
	kg (lb)	kPa (psi)	kg (lb)	kPa (psi)
Base Machine Configurations				
Base Frame with Track Rollers and Carrier Rollers				
3700 kg (8,200 lb) Counterweight + Long Undercarriage Base Machine				
HD Reach Boom + HD R2.9 (9'6") Stick	21 000 (46,300)	43.7 (6.3)	20 700 (46,300)	43.1 (6.2)
HD Straight Boom + HD R2.9 (9'6") Stick for Harvester	21 200 (46,800)	44.1 (6.4)	20 900 (46,800)	43.5 (6.3)

All operating weights include a 90% fuel tank with 75 kg (165 lb) operator.

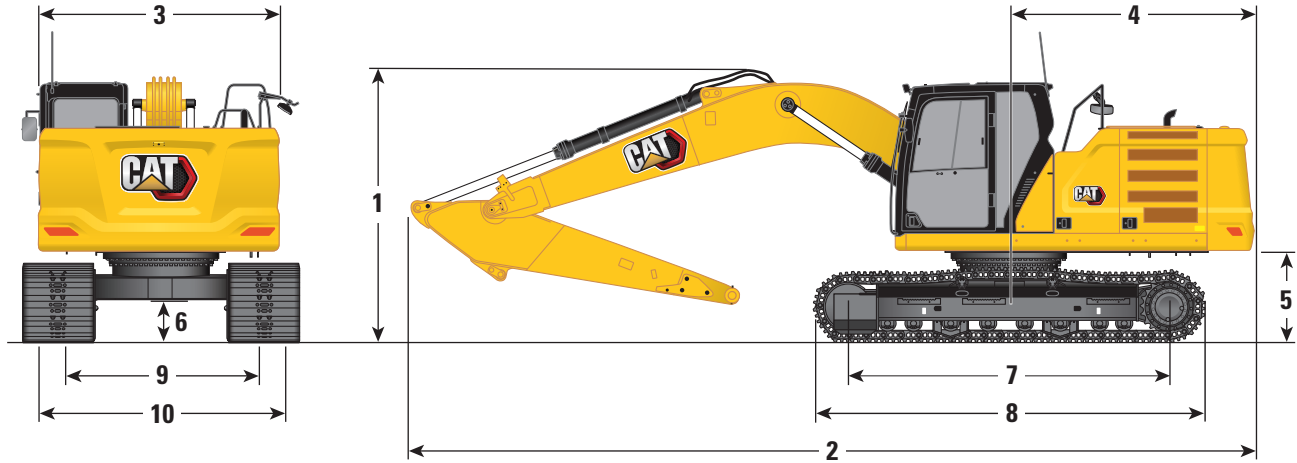
Major Component Weights

	kg	lb
Base Machine (with 3700 kg [8,200 lb] counterweight, standard swing frame, SD base frame with SD track rollers and SD carrier rollers for long undercarriage, without boom cylinder – does not include 90% fuel and 75 kg [165 lb] operator)	14 460	31,900
Track Shoes:		
600 mm (24") Width, 13 mm (0.51") Thick, Double Grouser Track Shoes	3080	6,800
600 mm (24") Width, 10 mm (0.39") Thick, Triple Grouser Track Shoes	2820	6,200
Two Boom Cylinders	350	760
Weight of 90% Fuel Tank and 75 kg (165 lb) Operator	310	690
Counterweight:		
3700 kg (8,200 lb) Counterweight	3700	8,200
Swing Frame:		
Standard Swing Frame	1890	4,170
Undercarriage:		
SD Base Frame with SD Track Rollers and SD Carrier Rollers for Long Undercarriage	5150	11,350
Booms (including lines, pins, stick cylinder):		
HD Reach Boom 5.7 m (18'8")	2020	4,450
HD Straight Boom 5.7 m (18'8") for Harvester	2080	4,590
HD Straight Boom 5.7 m (18'8") for Grapple	2020	4,450
Stick (including lines, pins, bucket cylinder, bucket linkage):		
HD Reach Stick R2.9B1 (9'6")	770	1,700
HD Reach Stick R2.9B1 (9'6") for Harvester	930	2,050
HD Reach Stick R2.9B1 (9'6") for Grapple	920	2,030
OPG	130	280

320 GC Forestry Hydraulic Excavator Specifications

Dimensions

All dimensions are approximate and may vary depending on bucket selection.

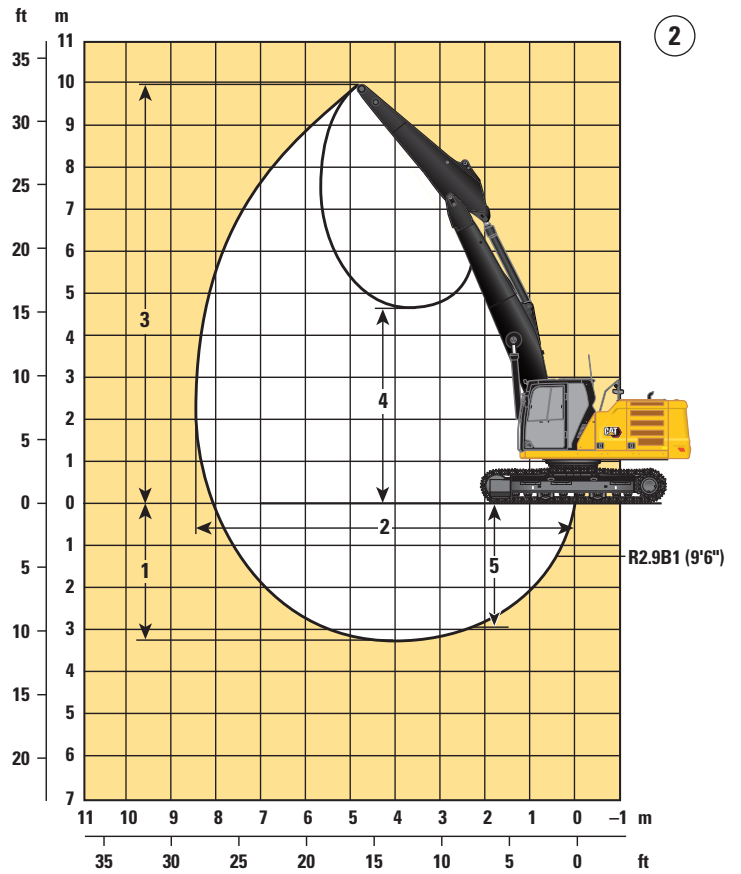
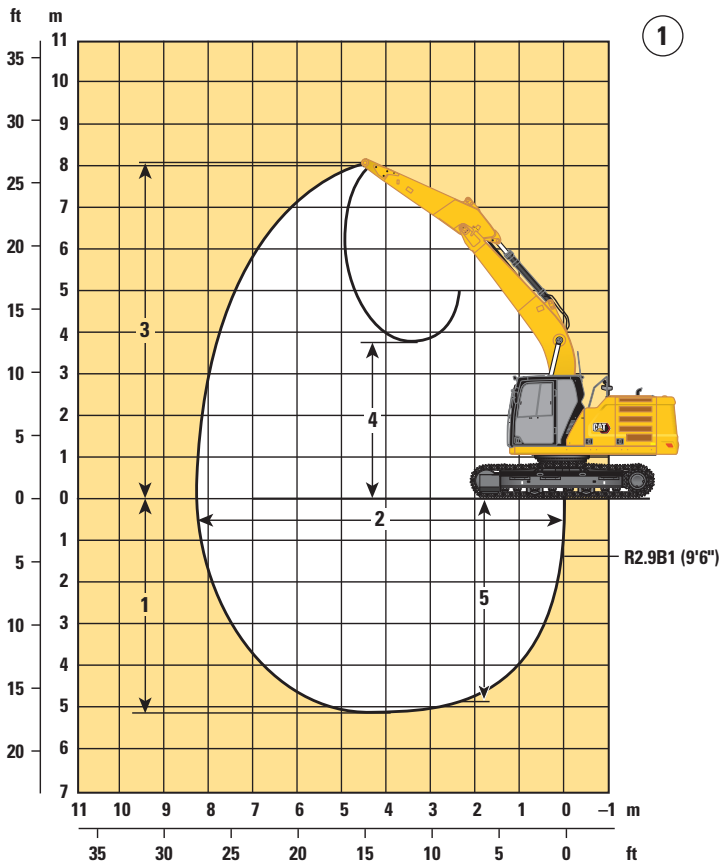


Boom Options	HD Reach Boom 5.7 m (18'8")		HD Straight Boom 5.7 m (18'8")	
Stick Options	HD Reach Stick R2.9B1 (9'6")		R2.9B1 (9'6") Harvester	R2.9B1 (9'6") Grapple
1 Machine Height:				
Top of Cab Height	2970 mm	9'9"	2970 mm	9'9"
Top of OPG Height	3120 mm	10'3"	3120 mm	10'3"
Handrail Height	2970 mm	9'9"	2970 mm	9'9"
With Boom/Stick Installed	2920 mm	9'7"	2590 mm	8'6"
With Boom Installed	2480 mm	8'2"	2180 mm	7'2"
2 Machine Length:				
With Boom/Stick Installed	9500 mm	31'2"	9550 mm	31'4"
With Boom Installed	8460 mm	27'9"	8370 mm	27'6"
3 Upper Frame Width	2780 mm	9'1"	2780 mm	9'1"
4 Tail Swing Radius	2830 mm	9'3"	2830 mm	9'3"
5 Counterweight Clearance	1050 mm	3'5"	1050 mm	3'5"
6 Ground Clearance	465 mm	1'5"	465 mm	1'5"
7 Length to Center of Rollers	3650 mm	12'0"	3650 mm	12'0"
8 Track Length	4450 mm	14'7"	4450 mm	14'7"
9 Track Gauge – Extended	2380 mm	7'10"	2380 mm	7'10"
10 Undercarriage Width:				
600 mm (24") Shoes	2980 mm	9'9"	2980 mm	9'9"

320 GC Forestry Hydraulic Excavator Specifications

Working Ranges

All dimensions are approximate and may vary depending on bucket selection.



Boom Options

HD Reach Boom
5.7 m (18'8")

①

HD Straight Boom
5.7 m (18'8")

②

Stick Options

HD Reach Stick
R2.9B1 (9'6")

R2.9B1 (9'6")
Harvester

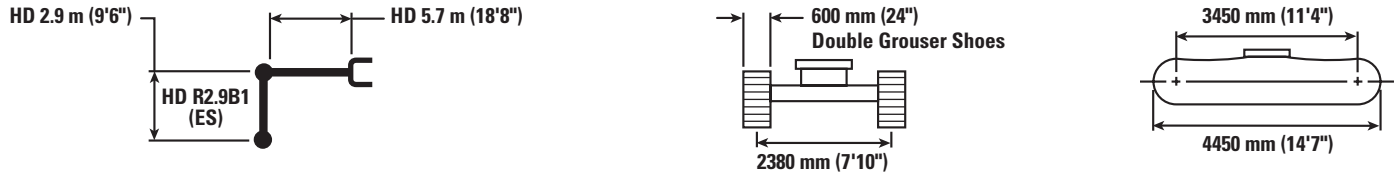
R2.9B1 (9'6")
Grapple

	HD Reach Stick R2.9B1 (9'6")		HD Reach Stick R2.9B1 (9'6") Harvester		HD Reach Stick R2.9B1 (9'6") Grapple	
1 Maximum Digging Depth	5140 mm	16'10"	3260 mm	10'8"	3260 mm	10'8"
2 Maximum Reach at Ground Line	8260 mm	27'1"	8440 mm	27'8"	8440 mm	27'8"
3 Maximum Cutting Height	8070 mm	26'6"	9980 mm	32'9"	9980 mm	32'9"
4 Minimum Loading Height	3750 mm	12'4"	4770 mm	15'8"	4770 mm	15'8"
5 Maximum Depth Cut for 2440 mm (8 ft) Level Bottom	4800 mm	15'9"	2990 mm	9'10"	2990 mm	9'10"

320 GC Forestry Hydraulic Excavator Specifications

HD Reach Boom Lift Capacities – Counterweight: 3700 kg (8,200 lb) – with Bucket Linkages, without Bucket

General Forestry



		1500 mm/5'0"		3000 mm/10'0"		4500 mm/15'0"		6000 mm/20'0"		7500 mm/25'0"		mm in		
7500 mm 300 in	kg lb							*4900	*4900			*4250 *9,400	*4250 *9,400	6160 240
6000 mm 240 in	kg lb							*5600 *12,250	5400 11,550			*3950 *8,700	3900 *8,700	7290 290
4500 mm 180 in	kg lb							*6150 *13,350	5250 11,250	5700 12,200	3700 7,950	*3900 *8,550	3350 7,400	7990 320
3000 mm 120 in	kg lb					*8900 *19,100	7550 16,250	*7000 *15,200	5000 10,700	5600 12,000	3600 7,750	*3950 *8,700	3050 6,750	8360 330
1500 mm 60 in	kg lb					*10 700 *23,050	7000 15,100	7550 16,250	4750 10,200	5450 11,700	3500 7,500	*4200 *9,250	2950 6,450	8450 340
0 mm 0 in	kg lb			*6450 *14,850	*6450 *14,850	11 500 24,700	6700 14,400	7350 15,800	4550 9,800	5350 11,500	3400 7,300	*4650 *10,200	3000 6,550	8260 330
-1500 mm -60 in	kg lb	*6900 *15,450	*6900 *15,450	*11 050 *25,050	*11 050 *25,050	11 400 24,450	6600 14,200	7250 15,600	4450 9,600	5300 11,400	3350 7,250	5050 11,150	3200 7,100	7780 310
-3000 mm -120 in	kg lb	*11 700 *26,250	*11 700 *26,250	*15 550 *33,650	12 750 27,300	*11 050 *23,850	6650 14,350	7300 15,700	4500 9,700			5950 13,200	3750 8,300	6940 270
-4500 mm -180 in	kg lb			*12 400 *26,600	*12 400 *26,600	*9000 *19,150	6850 14,800					*6850 *15,050	5150 11,550	5590 220



ISO 10567:2007



*Indicates that the load is limited by hydraulic lifting capacity rather than tipping load. The above loads are in compliance with hydraulic excavator lift capacity standard ISO 10567:2007. They do not exceed 87% of hydraulic lifting capacity or 75% of tipping load. Weight of all lifting accessories must be deducted from the above lifting capacities. Lifting capacities are based on the machine standing on a firm, uniform supporting surface. The use of a work tool attachment point to handle/lift objects, could affect the machine lift performance.

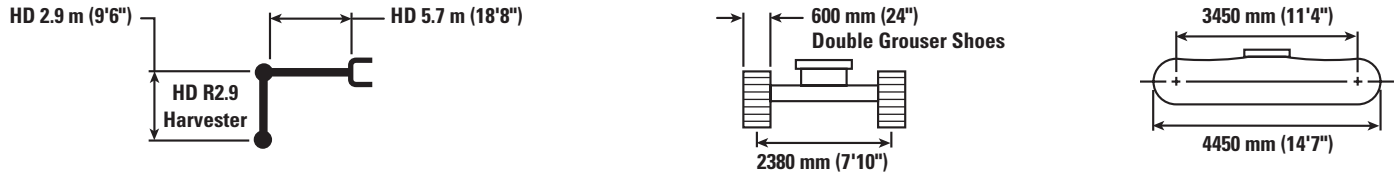
Lift capacity stays with ±5% for all available track shoes.












Always refer to the appropriate Operation and Maintenance Manual for specific product information.

320 GC Forestry Hydraulic Excavator Specifications

HD Straight Boom Lift Capacities – Counterweight: 3700 kg (8,200 lb) – with Bucket Linkages, without Bucket

Harvester



		3000 mm/10'0"		4500 mm/15'0"		6000 mm/20'0"		7500 mm/25'0"				mm in
												
9000 mm 350 in	kg lb			*6100	*6100					*5700 *13,000	*5700 *13,000	4580 170
7500 mm 300 in	kg lb			*6950 *15,350	*6950 *15,350	*6150 *12,300	5150 11000			*4550 *10,150	*4550 *10,150	6390 250
6000 mm 240 in	kg lb			*6700 *14,750	*6700 *14,750	*7050 *15,350	5200 11,100			*4100 *9,100	3550 7,900	7490 290
4500 mm 180 in	kg lb	*8000 *16,750	*8000 *16,750	*8250 *17,750	7800 16,800	7900 16,950	5000 10,800	5500 11,850	3550 7,600	*3950 *8,700	3050 6,750	8170 320
3000 mm 120 in	kg lb			*11 100 *24,050	7200 15,550	7600 16,350	4750 10,250	5400 11,600	3450 7,400	*3950 *8,650	2800 6,200	8530 340
1500 mm 60 in	kg lb			11 500 24,700	6700 14,400	7350 15,750	4500 9,700	5300 11,350	3350 7,150	*4050 *8,900	2750 6,000	8620 340
0 mm 0 in	kg lb			11 200 24,050	6400 13,800	7150 15,350	4350 9,350	5200 11,200	3250 7,000	*4350 *9,550	2800 6,150	8430 330
-1500 mm -60 in	kg lb	*8950 *20,400	*8950 *20,400	*9650 *20,950	6400 13,700	7100 15,250	4300 9,250	5200 11,200	3250 7,000	*4400 *9,700	3050 6,700	7960 310
-3000 mm -120 in	kg lb			*7000 *15,000	6500 14,000	*5350 *11,300	4400 9,450			*4600 *10,350	3950 8,900	6540 250



ISO 10567:2007



*Indicates that the load is limited by hydraulic lifting capacity rather than tipping load. The above loads are in compliance with hydraulic excavator lift capacity standard ISO 10567:2007. They do not exceed 87% of hydraulic lifting capacity or 75% of tipping load. Weight of all lifting accessories must be deducted from the above lifting capacities. Lifting capacities are based on the machine standing on a firm, uniform supporting surface. The use of a work tool attachment point to handle/lift objects, could affect the machine lift performance.

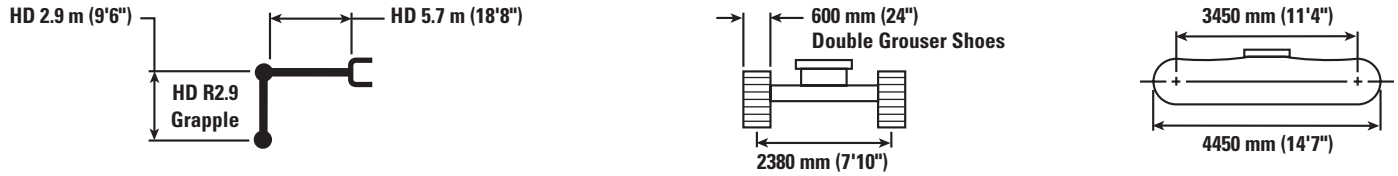
Lift capacity stays with $\pm 5\%$ for all available track shoes.



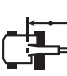

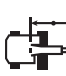






Always refer to the appropriate Operation and Maintenance Manual for specific product information.

320 GC Forestry Hydraulic Excavator Specifications

HD Straight Boom Lift Capacities – Counterweight: 3700 kg (8,200 lb) – with Bucket Linkages, without Bucket

Grapple



		3000 mm/10'0"		4500 mm/15'0"		6000 mm/20'0"		7500 mm/25'0"				mm in
												
9000 mm 350 in	kg lb			*6050	*6050					*5700 *13,000	*5700 *13,000	4580 170
7500 mm 300 in	kg lb			*6900 *15,350	*6900 *15,350	*6150 *12,300	5150 11,000			*4550 *10,100	*4550 *10,100	6390 250
6000 mm 240 in	kg lb			*6700 *14,750	*6700 *14,750	*7050 *15,350	5200 11,100			*4100 *9,100	3550 7,900	7490 290
4500 mm 180 in	kg lb	*8000 *16,750	*8000 *16,750	*8250 *17,750	7800 16,800	7900 16,950	5000 10,800	5500 11,850	3550 7,600	*3950 *8,700	3050 6,800	8170 320
3000 mm 120 in	kg lb			*11 150 *24,100	7200 15,550	7600 16,350	4750 10,250	5400 11,650	3450 7,400	*3950 *8,650	2850 6,250	8530 340
1500 mm 60 in	kg lb			11 550 24,750	6700 14,450	7350 15,800	4500 9,750	5300 11,350	3350 7,150	*4050 *8,900	2750 6,050	8620 340
0 mm 0 in	kg lb			11 250 24,050	6450 13,850	7150 15,400	4350 9,400	5200 11,200	3250 7,000	*4350 *9,500	2800 6,200	8430 330
-1500 mm -60 in	kg lb	*8950 *20,350	*8950 *20,350	*9700 *21,050	6400 13,800	7100 15,300	4300 9,300	5200 11,200	3250 7,050	*4450 *9,700	3050 6,750	7960 310
-3000 mm -120 in	kg lb			*7050 *15,100	6550 14,050	*5400 *11,400	4400 9,500			*4650 *10,400	3950 8,900	6540 250



ISO 10567:2007



*Indicates that the load is limited by hydraulic lifting capacity rather than tipping load. The above loads are in compliance with hydraulic excavator lift capacity standard ISO 10567:2007. They do not exceed 87% of hydraulic lifting capacity or 75% of tipping load. Weight of all lifting accessories must be deducted from the above lifting capacities. Lifting capacities are based on the machine standing on a firm, uniform supporting surface. The use of a work tool attachment point to handle/lift objects, could affect the machine lift performance.

Lift capacity stays with $\pm 5\%$ for all available track shoes.

Always refer to the appropriate Operation and Maintenance Manual for specific product information.

320 GC Forestry Standard and Optional Equipment

Standard and Optional Equipment

Standard and optional equipment may vary. Consult your Cat dealer for details.

	Standard	Optional		Standard	Optional
BOOMS, STICKS AND LINKAGES			CAT TECHNOLOGY		
5.7 m (18'8") HD Reach boom		✓	VisionLink	✓ ¹	
5.7 m (18'8") HD Straight boom		✓	VisionLink Productivity		✓ ²
2.9 m (9'6") HD Reach stick		✓	Remote Flash	✓	
2.9 m (9'6") HD Stick for Harvester		✓	ELECTRICAL SYSTEM		
2.9 m (9'6") HD Stick for Grapple		✓	1,000 CCA maintenance-free batteries (×2)	✓	
Bucket linkage, B1-family with lifting eye		✓	Centralized electrical disconnect switch	✓	
CAB			LED chassis light	✓	
ROPS	✓		LED, left-side and right-side boom light		✓
OPG		✓	LED cab light		✓
19 mm (3/4") polycarbonate front window	✓		Premium surround lighting package		✓
13 mm (1/2") polycarbonate side and rear window	✓		ENGINE		
High-resolution 203 mm (8") LCD touchscreen monitor	✓		Cat C4.4 single turbo diesel engine	✓	
Automatic bi-level air conditioner	✓		Two selectable power modes	✓	
Jog dial and shortcut keys for monitor control	✓		Automatic engine speed control	✓	
Keyless push-to-start engine control	✓		Automatic engine idle shutdown	✓	
Height-adjustable console, three steps with tool	✓		Work up to 3000 m (9,842.5 ft) above sea level without engine power de-rating	✓	
Monitor integrated Bluetooth radio with USB/Aux Ports	✓		52° C (125° F) high-ambient cooling capacity	✓	
Heated air-suspension seat	✓		-32° C (-25° F) cold start capability	✓	
Slider joysticks	✓		Double element air filter with integrated pre-cleaner	✓	
51 mm (2") seat belt	✓		Electric fuel priming pump	✓	
Fixed left-side console	✓		Electric cooling fans with auto-reverse function	✓	
12V DC outlets	✓				
Document storage	✓				
Cup and bottle holders	✓				
Upper parallel wiper with washer	✓				
Openable steel hatch	✓				
LED dome and lower lights	✓				
Roller front sunscreen	✓				
Roller rear sunscreen		✓			
Washable floor mat	✓				
Beacon ready	✓				

(continued on next page)

¹Provides core telematics data to manage health, maintenance insights, and condition monitoring. Other plans available for more comprehensive data reporting. Consult your Cat dealer for details.

²VisionLink subscription required. Consult your Cat dealer for details.

320 GC Forestry Standard and Optional Equipment

Standard and Optional Equipment *(continued)*

Standard and optional equipment may vary. Consult your Cat dealer for details.

	Standard	Optional		Standard	Optional
HYDRAULIC SYSTEM			SERVICE AND MAINTENANCE		
Tool Control 25 Hydraulic Package for Forestry (two pumps, one/two way high pressure flow)	✓		Side entry to service platform	✓	
Electronic main control valve	✓		Grouped engine oil and fuel filters	✓	
Auto warm up	✓		S·O·S ports	✓	
Auto two-speed travel	✓		Ground-level second dipstick for engine oil	✓	
Boom and stick drift reduction valve	✓		QuickEvac™ maintenance ready		✓
Element type main hydraulic filter	✓		Radiator screen		✓
Tandem type electronic main pump	✓		Integrated vehicle health management system	✓	
Quick coupler circuit for Cat pin grabber		✓	UNDERCARRIAGE AND STRUCTURES		
Operating pattern (four way)		✓	Long undercarriage	✓	
Standard fluids	✓		Grease lubricated track link	✓	
Arctic fluids (include grease, engine oil, hydraulic oil)		✓	600 mm (24") double grouser track shoes	✓	
SAFETY AND SECURITY			600 mm (24") triple grouser track shoes		✓
Rearview camera	✓		Full-length track guiding guard	✓	
Right-hand-side view mirror		✓	HD travel motor guards	✓	
Right-hand-side view camera		✓	HD bottom guard	✓	
Right-hand-side handrail with hand hold	✓		Swivel guard		✓
Neutral lever (lock out) for all controls	✓		OPG guard		✓
Anti-skid plate and countersunk bolts on service platform	✓		3700 kg (8,160 lb) counterweight	✓	
Ground-level secondary engine shutoff switch	✓		Tie-down points on base frame	✓	
Lockable disconnect switch	✓				
Travel alarm		✓			
Inspection light		✓			
Signaling/warning horn	✓				



For more complete information on Cat products, dealer services, and industry solutions, visit us on the web at www.cat.com

© 2024 Caterpillar
All rights reserved

Materials and specifications are subject to change without notice. Featured machines in photos may include additional equipment. See your Cat dealer for available options.

CAT, CATERPILLAR, LET'S DO THE WORK, their respective logos, "Caterpillar Corporate Yellow," the "Power Edge" and Cat "Modern Hex" trade dress as well as corporate and product identity used herein, are trademarks of Caterpillar and may not be used without permission. VisionLink is a trademark of Caterpillar Inc., registered in the United States and in other countries.

AEXQ3970-00 (10-2024)
Build Number: 07H
(S Am [except Chile,
Colombia])

