



# 323 GX

## Hydraulic Excavator

# Technical Specifications

Configurations and features may vary by region. Please consult your Cat® dealer for availability in your area.

## Table of Contents

<b>Specifications</b> .....	<b>2</b>
Engine .....	2
Swing Mechanism .....	2
Weights .....	2
Track .....	2
Drive .....	2
Hydraulic System .....	2
Service Refill Capacities .....	2
Standards .....	2
Sound Performance .....	3
Air Conditioning System .....	3
Operating Weights and Ground Pressures .....	3
Major Component Weights .....	4
Dimensions .....	5
Working Ranges .....	6
Reach Boom Lift Capacities – Counterweight: 4250 kg (9,370 lb) .....	7
Bucket Specifications and Compatibility .....	10
Attachments Offering Guide .....	10
<b>Standard and Optional Equipment</b> .....	<b>11</b>
<b>Dealer Installed Kits and Attachments</b> .....	<b>13</b>
<b>323 GX Environmental Declaration</b> .....	<b>14</b>

# 323 GX Hydraulic Excavator Specifications

## Engine

Engine Model	Cat® C4.4	
Net Power		
ISO 9249	123.7 kW	166 hp
ISO 9249 (DIN)	168 hp (metric)	
Engine Power		
ISO 14396	129.4 kW	174 hp
ISO 14396 (DIN)	176 hp (metric)	
Bore	105 mm	4 in
Stroke	127 mm	5 in
Displacement	4.4 L	269 in <sup>3</sup>
Biodiesel Capability	Up to B20 <sup>(1)</sup>	

- Cat C4.4 engine emits equivalent to U.S. EPA Tier 3 and EU Stage IIIA.
- Recommended for use up to 4500 m (14,764 ft) altitude with engine power derate above 3000 m (9,842 ft).
- Advertised power is tested per the specified standard in effect at the time of manufacture.
- Net power advertised is the power available at the flywheel when the engine is equipped with fan, air intake system, exhaust system and alternator.
- Engine speed at 2,000 rpm.

<sup>(1)</sup>Cat engines are compatible with diesel fuel blended with the following lower-carbon intensity fuels\*\* up to:

- ✓ 100% biodiesel FAME (fatty acid methyl ester)\*
- ✓ 100% renewable diesel, HVO (hydrotreated vegetable oil) and GTL (gas-to-liquid) fuels

Refer to guidelines for successful application. Please consult your Cat dealer or “Caterpillar Machine Fluids Recommendations” (SEBU6250) for details.

\*For use of blends higher than 20% biodiesel, consult your Cat dealer.

\*\*Tailpipe greenhouse gas emissions from lower-carbon intensity fuels are essentially the same as traditional fuels.

## Swing Mechanism

Swing Speed*	11.13 rpm	
Maximum Swing Torque	82 kN·m	60,333 lbf·ft

\*For CE-marked machine default value may be set lower.

## Weights

Operating Weight	21 400 kg	47,200 lb
------------------	-----------	-----------

- Reach boom, R2.9B1 (9'6") stick, General Duty (GD) 1.2 m<sup>3</sup> (1.57 yd<sup>3</sup>) bucket, 600 mm (24") triple grouser shoes and 4250 kg (9,370 lb) counterweight.

Operating Weight	21 900 kg	48,300 lb
------------------	-----------	-----------

- Reach boom, R2.9B1 (9'6") stick, GD 1.2 m<sup>3</sup> (1.57 yd<sup>3</sup>) bucket, 790 mm (31") triple grouser shoes and 4250 kg (9,370 lb) counterweight.

## Track

Optional Track Shoes Width	600 mm	24 in
Optional Track Shoes Width	790 mm	31 in
Optional Track Shoes Width	800 mm	31 in
Number of Shoes (each side)	47	
Number of Track Rollers (each side)	7	
Number of Carrier Rollers (each side)	2	

## Drive

Gradeability	35° +/-70%	
Maximum Travel Speed	5.7 km/h	3.6 mph
Maximum Drawbar Pull	200 kN	44,917 lbf

## Hydraulic System

Main System – Maximum Flow – Implement	429 L/min (214.5 × 2 pumps)	113 gal/min (56.7 × 2 pumps)
Maximum Pressure – Equipment – Normal	35 000 kPa	5,075 psi
Maximum Pressure – Travel	35 000 kPa	5,075 psi
Maximum Pressure – Swing	27 500 kPa	3,988 psi
Boom Cylinder – Bore	120 mm	5 in
Boom Cylinder – Stroke	1260 mm	50 in
Stick Cylinder – Bore	140 mm	6 in
Stick Cylinder – Stroke	1504 mm	59 in
Bucket Cylinder – Bore	120 mm	5 in
Bucket Cylinder – Stroke	1104 mm	43 in

## Service Refill Capacities

Fuel Tank Capacity	390 L	103 gal
Cooling System	24.5 L	6.5 gal
Engine Oil	15 L	4 gal
Swing Drive	5.5 L	1.5 gal
Final Drive (each)	4.5 L	1.2 gal
Hydraulic System (including tank)	218 L	57.6 gal
Hydraulic Tank	115 L	30.4 gal

## Standards

Brakes	ISO 10265:2008
Cab/Operator Protective Guards (OPG) (optional)	ISO 10262:1998 Level II

# 323 GX Hydraulic Excavator Specifications

## Sound Performance

ISO 6395 (External)	103 dB(A)
ISO 6396 (Inside Cab)	70 dB(A)

- Hearing protection may be needed when operating with an open operator station and cab (when not properly maintained or doors/windows open) for extended periods or in a noisy environment.

## Air Conditioning System

The air conditioning system on this machine contains the fluorinated greenhouse gas refrigerant R134a (Global Warming Potential = 1430). The system contains 0.85 kg of refrigerant, which has a CO<sub>2</sub> equivalent of 1.216 metric tonnes.

## Operating Weights and Ground Pressures

Base Machine Configurations	600 mm (24 in) Triple Grouser Shoes		790 mm (31 in) Triple Grouser Shoes		800 mm (31 in) Triple Grouser Shoes	
	Weight	Ground Pressure	Weight	Ground Pressure	Weight	Ground Pressure
<b>Base Frame with Track Rollers and Carrier Rollers</b>						
<b>4250 kg (9,370 lb) Counterweight and Medium Undercarriage Base Machine</b>	<b>kg (lb)</b>	<b>kPa (psi)</b>	<b>kg (lb)</b>	<b>kPa (psi)</b>	<b>kg (lb)</b>	<b>kPa (psi)</b>
Reach Boom + R2.9B1 (9'6") Stick + 1.2 m <sup>3</sup> (1.57 yd <sup>3</sup> ) GD Bucket	21 400 (47,200)	46.9 (6.8)	21 900 (48,300)	36.5 (5.3)	21 900 (48,300)	36.0 (5.2)

All operating weights include a 90% fuel tank with 75 kg (165 lb) operator.

# 323 GX Hydraulic Excavator Specifications

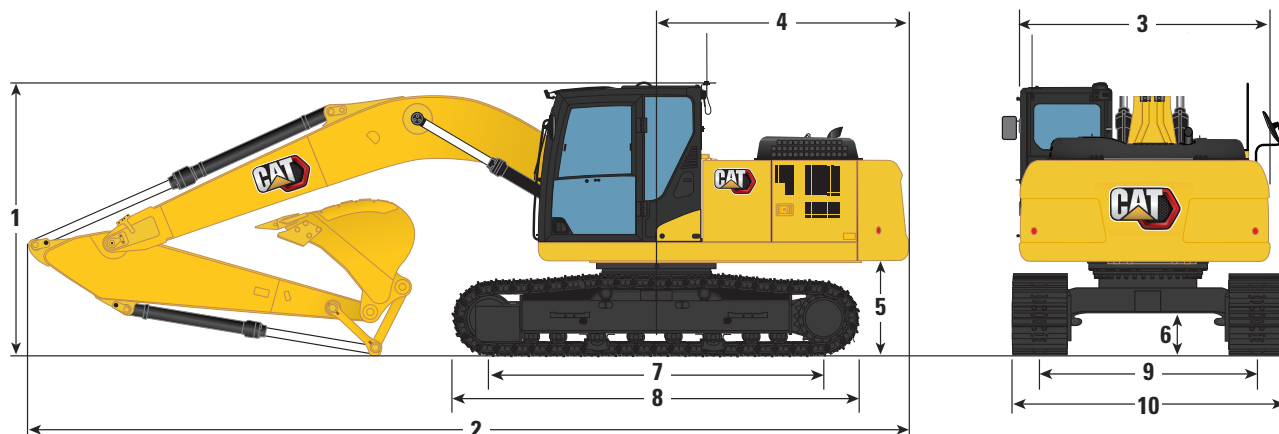
## Major Component Weights

	kg	lb
Base Machine (with 4250 kg [9,370 lb] counterweight, upper frame, Medium undercarriage with rollers and two boom cylinders – does not include boom, stick, bucket, stick cylinder, bucket cylinder, tracks, 90% fuel tank and 75 kg [165 lb] operator).	14 700	32,410
Track Shoes:		
600 mm (24") Width, 10 mm (0.39") Thick Triple Grouser Track Shoes	2700	5,960
790 mm (31") Width, 10 mm (0.39") Thick Triple Grouser Track Shoes with Step Extension	3210	7,100
800 mm (31") Width, 10 mm (0.39") Thick Triple Grouser Track Shoes with Step Extension	3240	7,100
Two Boom Cylinders	360	800
Weight of 90% Fuel Tank and 75 kg (165 lb) Operator	380	840
Counterweight:		
4250 kg (9,370 lb) Counterweight	4250	9,370
Booms (including lines, pins, stick cylinder):		
Reach Boom 5.7 m (18'8")	1690	3,720
HP Tool Control Lines for Reach Boom 5.7 m (18'8")	80	180
Sticks (including lines, pins, bucket cylinder, bucket linkage):		
Reach Stick R2.9B1 (9'6")	1060	2,340
HP Tool Control Lines for Reach Stick R2.9B1 (9'6")	50	110
Buckets (without linkage, with tips and side cutters):		
1.3 m <sup>3</sup> (1.70 yd <sup>3</sup> ) GD with J-Tips	890	2,000
1.2 m <sup>3</sup> (1.57 yd <sup>3</sup> ) GD with J-Tips	870	1,930
1.19 m <sup>3</sup> (1.56 yd <sup>3</sup> ) GD with Advansys™ Tips	890	1,970

# 323 GX Hydraulic Excavator Specifications

## Dimensions

All dimensions are approximate and may vary depending on bucket selection.



### Boom Option

Reach Boom  
5.7 m (18'8")

### Stick Option

Reach Stick  
R2.9B1 (9'6")

#### 1 Machine Height:

Top of Cab Height	2980 mm	9'10"
Top of OPG Height	3100 mm	10'2"
Handrail Height	3030 mm	9'11"
With Boom/Stick/Bucket Installed	3130 mm	10'3"
With Boom/Stick Installed	3060 mm	10'0"
With Boom Installed	2960 mm	9'9"

#### 2 Machine Length:

With Boom/Stick/Bucket Installed	9520 mm	31'3"
With Boom/Stick Installed	9510 mm	31'2"
With Boom Installed	8500 mm	27'11"

#### 3 Upperframe Width

2740 mm 9'0"

#### 4 Tail Swing Radius

2830 mm 9'3"

#### 5 Counterweight Clearance

1050 mm 3'5"

#### 6 Ground Clearance

470 mm 1'6"

#### 7 Track Length - Length to Center of Rollers

3450 mm 11'4"

#### 8 Track Length - Crawler Overall Length

4250 mm 13'11"

#### 9 Track Gauge

2380 mm 7'10"

#### 10 Undercarriage Width:

600 mm (24") Shoes	2980 mm	9'9"
790 mm (31") Shoes	3170 mm	10'5"
800 mm (31") Shoes	3180 mm	10'6"

#### Bucket Type

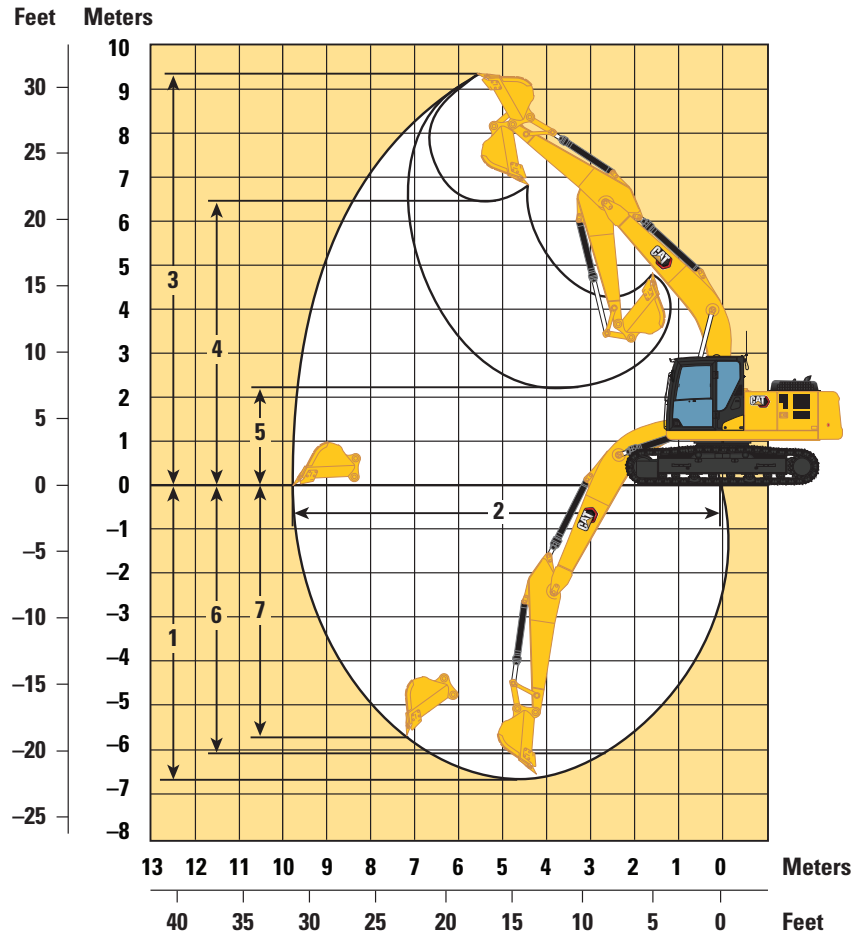
GD

Bucket Capacity	1.20 m <sup>3</sup>	1.57 yd <sup>3</sup>
Bucket Tip Radius	1572 mm	5'2"

# 323 GX Hydraulic Excavator Specifications

## Working Ranges

All dimensions are approximate and may vary depending on bucket selection.



### Boom Option

Reach Boom  
5.7 m (18'8")

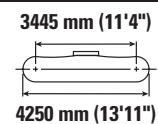
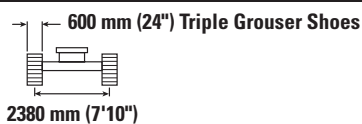
### Stick Option

Reach Stick  
R2.9B1 (9'6")

1 Maximum Digging Depth	6710 mm	22'0"
2 Maximum Reach at Ground Line	9860 mm	32'4"
3 Maximum Cutting Height	9470 mm	31'1"
4 Maximum Loading Height	6500 mm	21'4"
5 Minimum Loading Height	2180 mm	7'2"
6 Maximum Depth Cut for 2440 mm (8'0") Level Bottom	6020 mm	19'9"
7 Maximum Vertical Wall Digging Depth	5740 mm	18'10"
Minimum Working Equipment Radius	3650 mm	12'0"
Bucket Digging Force (ISO)	140 kN	31,428 lbf
Stick Digging Force (ISO)	107 kN	23,942 lbf
Bucket Type	GD	
Bucket Capacity	1.20 m <sup>3</sup>	1.57 yd <sup>3</sup>
Bucket Tip Radius	1572 mm	5'2"

# 323 GX Hydraulic Excavator Specifications

## Reach Boom Lift Capacities – Counterweight: 4250 kg (9,370 lb) – without Bucket



		1500 mm/5'0"		3000 mm/10'0"		4500 mm/15'0"		6000 mm/20'0"		7500 mm/25'0"		mm ft/in		
7500 mm 25'0"	kg lb							*4550	*4550			*3900 *8,650	*3900 *8,650	6160 19'9"
6000 mm 20'0"	kg lb							*4950 *10,800	*4950 *10,800			*3600 *7,950	*3600 *7,950	7290 23'9"
4500 mm 15'0"	kg lb							*5450 *11,800	5250 11,250	*5100 *11,150	3700 7,900	*3550 *7,750	3350 7,350	7990 26'1"
3000 mm 10'0"	kg lb					*7950 *17,100	7600 16,400	*6250 *13,500	5000 10,750	5150 11,100	3600 7,750	*3600 *7,950	3050 6,700	8350 27'5"
1500 mm 5'0"	kg lb					*9600 *20,700	7150 15,350	7000 15,100	4750 10,250	5050 10,850	3500 7,500	*3850 *8,450	2950 6,450	8440 27'8"
0 mm 0'0"	kg lb			*6250 *14,300	*6250 *14,300	*10 500 *22,750	6850 14,750	6850 14,700	4600 9,900	4950 10,650	3400 7,300	*4250 *9,350	3000 6,550	8250 27'1"
-1500 mm -5'0"	kg lb	*6650 *14,900	*6650 *14,900	*10 800 *24,450	*10 800 *24,450	10 550 22,650	6800 14,550	6750 14,500	4550 9,750	4950 10,600	3400 7,250	4700 10,350	3250 7,100	7770 25'6"
-3000 mm -10'0"	kg lb	*11 450 *25,650	*11 450 *25,650	*14 050 *30,450	13 200 28,300	*9950 *21,450	6850 14,700	6800 14,600	4550 9,850			5550 12,300	3800 8,400	6940 22'8"
-4500 mm -15'0"	kg lb			*11 200 *23,950	*11 200 *23,950	*8050 *17,100	7050 15,150					*6100 *13,350	5250 11,750	5580 18'0"



ISO 10567:2007



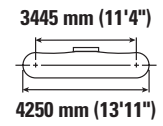
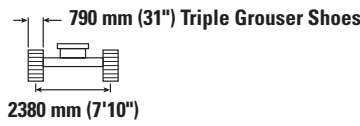
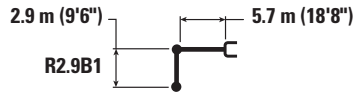
\*Indicates that the load is limited by hydraulic lifting capacity rather than tipping load. The above loads are in compliance with hydraulic excavator lift capacity standard ISO 10567:2007. They do not exceed 87% of hydraulic lifting capacity or 75% of tipping load. Weight of all lifting accessories must be deducted from the above lifting capacities. Lifting capacities are based on the machine standing on a firm, uniform supporting surface. The use of a work tool attachment point to handle/lift objects, could affect the machine lift performance.

Lift capacity stays with ±5% for all available track shoes.

Always refer to the appropriate Operation and Maintenance Manual for specific product information.

# 323 GX Hydraulic Excavator Specifications

## Reach Boom Lift Capacities – Counterweight: 4250 kg (9,370 lb) – without Bucket



		1500 mm/5'0"		3000 mm/10'0"		4500 mm/15'0"		6000 mm/20'0"		7500 mm/25'0"		mm ft/in		
7500 mm 25'0"	kg lb							*4550	*4550			*3900 *8,650	*3900 *8,650	6160 19'9"
6000 mm 20'0"	kg lb							*4950 *10,800	*4950 *10,800			*3600 *7,950	*3600 *7,950	7290 23'9"
4500 mm 15'0"	kg lb							*5400 *11,800	5350 11,500	*5100 *11,500	3800 8,100	*3550 *7,750	3400 7,500	7990 26'1"
3000 mm 10'0"	kg lb				*7950 *17,100	7750 16,750	*6250 *13,500	5100 11,000	5300 11,350	3700 7,900	*3600 *7,950	*3600 *8,450	3100 6,850	8350 27'5"
1500 mm 5'0"	kg lb				*9600 *20,700	7300 15,700	*7050 *15,300	4900 10,500	5100 11,100	3500 7,650	3550 *8,450	*3850 *8,450	3000 6,600	8440 27'8"
0 mm 0'0"	kg lb			*6250 *14,300	*6250 *14,300	*10 500 *22,750	7000 15,100	7000 15,050	4700 10,150	5100 10,900	3500 7,500	*4250 *9,350	3050 6,700	8250 27'1"
-1500 mm -5'0"	kg lb	*6650 *14,900	*6650 *14,900	*10 800 *24,450	*10 800 *24,450	*10 600 *23,000	6950 14,900	6900 14,850	4650 10,000	5050 10,850	3450 7,450	4800 10,600	3300 7,300	7770 25'6"
-3000 mm -10'0"	kg lb	*11 450 *25,650	*11 450 *25,650	*14 050 *30,450	13 500 28,900	*9950 *21,450	7000 15,050	6950 14,950	4650 10,050			5700 12,600	3900 8,600	6940 22'8"
-4500 mm -15'0"	kg lb			*11 200 *23,950	*11 200 *23,950	*8050 *17,100	7200 15,500					*6100 *13,350	5350 12,050	5580 18'0"



ISO 10567:2007



\*Indicates that the load is limited by hydraulic lifting capacity rather than tipping load. The above loads are in compliance with hydraulic excavator lift capacity standard ISO 10567:2007. They do not exceed 87% of hydraulic lifting capacity or 75% of tipping load. Weight of all lifting accessories must be deducted from the above lifting capacities. Lifting capacities are based on the machine standing on a firm, uniform supporting surface. The use of a work tool attachment point to handle/lift objects, could affect the machine lift performance.

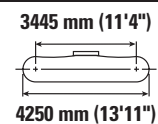
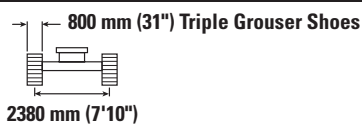
Lift capacity stays with ±5% for all available track shoes.

Always refer to the appropriate Operation and Maintenance Manual for specific product information.



# 323 GX Hydraulic Excavator Specifications

## Reach Boom Lift Capacities – Counterweight: 4250 kg (9,370 lb) – without Bucket



		1500 mm/5'0"		3000 mm/10'0"		4500 mm/15'0"		6000 mm/20'0"		7500 mm/25'0"		mm ft/in		
7500 mm 25'0"	kg lb							*4550	*4550			*3900 *8,650	*3900 *8,650	6160 19'9"
6000 mm 20'0"	kg lb							*4950 *10,800	*4950 *10,800			*3600 *7,950	*3600 *7,950	7290 23'9"
4500 mm 15'0"	kg lb							*5400 *11,800	5350 11,550	*5100 *11,150	3800 8,150	*3550 *7,800	3400 7,550	7990 26'1"
3000 mm 10'0"	kg lb					*7950 *17,100	7800 16,800	*6250 *13,500	5150 11,050	5300 11,400	3700 7,950	*3650 *7,950	3150 6,900	8350 27'5"
1500 mm 5'0"	kg lb					*9600 *20,700	7300 15,750	*7050 *15,300	4900 10,550	5200 11,150	3600 7,700	*3850 *8,450	3050 6,650	8440 27'8"
0 mm 0'0"	kg lb			*6250 *14,350	*6250 *14,350	*10 500 *22,750	7050 15,150	7000 15,100	4750 10,200	5100 10,950	3500 7,500	*4250 *9,350	3100 6,750	8250 27'1"
-1500 mm -5'0"	kg lb	*6700 *14,900	*6700 *14,900	*10 800 *24,500	*10 800 *24,500	*10 600 *23,000	6950 14,950	6950 14,900	4650 10,050	5050 10,900	3450 7,500	4850 10,650	3300 7,300	7770 25'6"
-3000 mm -10'0"	kg lb	*11 450 *25,650	*11 450 *25,650	*14 050 *30,450	13 550 29,000	*9900 *21,450	7000 15,100	6950 15,000	4700 10,100			5700 12,650	3900 8,650	6940 22'8"
-4500 mm -15'0"	kg lb			*11 200 *23,950	*11 200 *23,950	*8050 *17,100	7200 15,550					*6100 *13,400	5350 12,100	5580 18'0"



ISO 10567:2007



\*Indicates that the load is limited by hydraulic lifting capacity rather than tipping load. The above loads are in compliance with hydraulic excavator lift capacity standard ISO 10567:2007. They do not exceed 87% of hydraulic lifting capacity or 75% of tipping load. Weight of all lifting accessories must be deducted from the above lifting capacities. Lifting capacities are based on the machine standing on a firm, uniform supporting surface. The use of a work tool attachment point to handle/lift objects, could affect the machine lift performance.

Lift capacity stays with ±5% for all available track shoes.

Always refer to the appropriate Operation and Maintenance Manual for specific product information.

# 323 GX Hydraulic Excavator Specifications

## Bucket Specifications and Compatibility

	Linkage	Width		Capacity		Weight		Counterweight	4250 kg (9,370 lb)
		mm	in	m <sup>3</sup>	yd <sup>3</sup>	kg	lb	Fill	Reach Boom
<b>Pin-On (No Quick Coupler)</b>									
General Duty	B	1250	49	1.20	1.57	879	1,938	100	⊙
	B	1200	48	1.19	1.56	890	1,962	100	⊙
	B	1300	51	1.3	1.70	890	1,962	100	⊖
Maximum load with pin-on (payload + bucket)								kg	3085
								lb	6,801

The above loads are in compliance with hydraulic excavator standard EN474-5:2006+A3:2013, they do not exceed 87% of hydraulic lifting capacity or 75% of tipping capacity with front linkage fully extended at ground line with bucket curled.

Capacity based on ISO 7451:2007.

Bucket weight with General Duty tips.

### Maximum Material Density:

⊙ 1800 kg/m<sup>3</sup> (3,000 lb/yd<sup>3</sup>)

⊖ 1500 kg/m<sup>3</sup> (2,500 lb/yd<sup>3</sup>)

Caterpillar recommends using appropriate work tools to maximize the value customers receive from our products. Use of work tools, including buckets, which are outside of Caterpillar's recommendations or specifications for weight, dimensions, flows, pressures, etc. may result in less-than-optimal performance, including but not limited to reductions in production, stability, reliability, and component durability. Improper use of a work tool resulting in sweeping, prying, twisting and/or catching of heavy loads will reduce the life of the boom and stick.

## Attachments Offering Guide

Not all Attachments are available in all regions. Consult your Cat dealer for configurations available in your region.

Match

† Allowed usage on machine less than 50%

### PIN-ON ATTACHMENTS

Counterweight	4250 kg (9,370 lb)	
Boom Type	Reach Boom	
Stick Length	R2.9 m (9'6")	
Hydraulic Hammers	H120 GC	✓
	H120 GC Side Mount	✓
	H120 GC S	✓
	H120 S	✓
	H130 S	✓†
Compactors (Vibratory Plate)	CVP110	✓

## Standard and Optional Equipment

Standard and optional equipment may vary. Consult your Cat dealer for details.

	Standard	Optional		Standard	Optional
<b>BOOMS, STICKS AND LINKAGES</b>			<b>ENGINE</b>		
5.7 m (18'8") Reach boom	✓		Cat® C4.4 double turbo diesel engine	✓	
2.9 m (9'6") Reach stick	✓		Two selectable modes: Power, Smart	✓	
Bucket linkage with lifting eye, B1 type	✓		Up to 4500 m (14,764 ft) altitude capability with derate from 3000 m (9,842 ft)	✓	
<b>CAB</b>			52° C (125° F) high-ambient cooling capacity	✓	
OPG		✓	-25° C (-13° F) cold start capability	✓	
Sound suppressed cab with viscous mounts	✓		Electric fuel priming pump	✓	
High-resolution 203 mm (8") LCD touchscreen monitor	✓		Direct drive fan	✓	
Mechanical-suspension seat with head rest and arm rest	✓		Two-stage fuel filtration system with water separator and indicator	✓	
51 mm (2") orange seat belt	✓		Sealed double element air filter with pre-cleaner	✓	
Auto bi-level air conditioner	✓		<b>HYDRAULIC SYSTEM</b>		
Keyless push-to-start engine control	✓		Electronic main control valve, hammer ready	✓	
Fixed left-side console	✓		Back-to-back electronic pump	✓	
1-button joysticks	✓		Boom and stick regeneration circuits	✓	
3-button joysticks		✓	Automatic hydraulic oil warm up	✓	
AM/FM Bluetooth® radio with USB/Auxiliary ports	✓		Automatic two-speed travel	✓	
Speakers (mounted on roof)	✓		Hammer lines		✓
24V DC outlet	✓		High performance hydraulic return filter	✓	
Storage compartments	✓		<b>SAFETY AND SECURITY</b>		
Cup holder	✓		Anti-skid plating with countersunk bolts	✓	
70/30 tempered glass windshield	✓		Handrail and handhold	✓	
Rear window emergency exit	✓		Lockable external tool/storage box	✓	
Radial wiper with washer	✓		Ground-level secondary engine shutoff switch	✓	
Openable steel hatch	✓		Lockable disconnect switch	✓	
LED dome light	✓		Signaling/warning horn	✓	
Washable floor mat	✓		Swing alarm		✓
<b>CAT TECHNOLOGY</b>			Hydraulic lockout lever	✓	
Cat Equipment Management:			Right-side-view mirror	✓	
VisionLink®	✓ <sup>1</sup>		Right-hand edge mirror on cab		✓
VisionLink Productivity		✓ <sup>2</sup>	Rearview camera		✓
Capability to Remote Flash Cat Product Link™ (telematics only)	✓		Travel alarm		✓
<b>ELECTRICAL SYSTEM</b>			<i>(continued on next page)</i>		
Two 950 CCA maintenance-free batteries	✓				
Electrical disconnect switch	✓				
LED chassis and cab lights	✓				
LED right-side boom light		✓			
LED left-side boom light	✓				

<sup>1</sup>Provides core telematics data to manage health, maintenance insights, and condition monitoring. Other plans available for more comprehensive data reporting. Consult your Cat dealer for details.

<sup>2</sup>VisionLink subscription required. Consult your Cat dealer for details.

# 323 GX Standard and Optional Equipment

## Standard and Optional Equipment *(continued)*

Standard and optional equipment may vary. Consult your Cat dealer for details.

	Standard	Optional		Standard	Optional
<b>SERVICE AND MAINTENANCE</b>			<b>UNDERCARRIAGE AND STRUCTURES</b>		
Grouped engine oil and fuel filters	✓		600 mm (24") triple grouser track shoes		✓
Scheduled Oil Sampling (S·O·S <sup>SM</sup> ) ports	✓		790 mm (31") triple grouser track shoes		✓
Radiator screen		✓	800 mm (31") triple grouser shoes <sup>3</sup>		✓
			Grease lubricated track link	✓	
			Center track guiding guard	✓	
			Bottom guards	✓	
			Travel motor guards	✓	
			OPG guard		✓
			4250 kg (9,370 lb) counterweight	✓	
			Tie-down points	✓	

<sup>3</sup>SE Asia only

## Dealer Installed Kits and Attachments

Attachments may vary. Consult your Cat dealer for details.

---

### GUARDS

- 6 mm (0.24") standard swivel guard
- Mesh guard full front (not compatible with cab light cover, rain protector)
- Mesh guard lower half front
- Operator Protective Guards

### SERVICE PART

- Hammer floor pedal kit
- Grease gun holder

# 323 GX Environmental Declaration

The following information applies to the machine at the time of final manufacture as configured for sale in the regions covered in this document. The content of this declaration is valid as of the date issued; however, content related to machine features and specifications are subject to change without notice. For additional information, please see the machine's Operation and Maintenance Manual.

For more information on sustainability in action and our progress, please visit <https://www.caterpillar.com/en/company/sustainability>.

## Engine

- The Cat C4.4 engine emits equivalent to U.S. EPA Tier 3 and EU Stage IIIA.
- Cat engines are compatible with diesel fuel blended with the following lower-carbon intensity fuels\*\* up to:
  - ✓ 100% biodiesel FAME (fatty acid methyl ester)\*
  - ✓ 100% renewable diesel, HVO (hydrotreated vegetable oil) and GTL (gas-to-liquid) fuels

Refer to guidelines for successful application. Please consult your Cat dealer or "Caterpillar Machine Fluids Recommendations" (SEBU6250) for details.

*\*For use of blends higher than 20% biodiesel, consult your Cat dealer.*

*\*\*Tailpipe greenhouse gas emissions from lower-carbon intensity fuels are essentially the same as traditional fuels.*

## Air Conditioning System

- The air conditioning system on this machine contains the fluorinated greenhouse gas refrigerant R134a (Global Warming Potential = 1430). The system contains 0.85 kg (1.9 lb) of refrigerant which has a CO<sub>2</sub> equivalent of 1.216 metric tonnes (1.340 tons).

## Paint

- Based on best available knowledge, the maximum allowable concentration, measured in parts per million (PPM), of the following heavy metals in paint are:
  - Barium < 0.01%
  - Cadmium < 0.01%
  - Chromium < 0.01%
  - Lead < 0.01%

## Sound Performance

ISO 6395 (External) 103 dB(A)

ISO 6396 (Inside Cab) 70 dB(A)

- Hearing protection may be needed when operating with an open operator station and cab (when not properly maintained or doors/windows open) for extended periods or in a noisy environment.

## Oils and Fluids

- Caterpillar factory fills with ethylene glycol coolants. Cat Diesel Engine Antifreeze/Coolant (DEAC) and Cat Extended Life Coolant (ELC) can be recycled. Consult your Cat dealer for more information.
- Cat Bio HYDO™ Advanced is an EU Ecolabel approved biodegradable hydraulic oil.
- Additional fluids are likely to be present, please consult the Operations and Maintenance Manual or the Application and Installation guide for complete fluid recommendations and maintenance intervals.

## Features and Technology

- The following features and technology may contribute to fuel savings and/or carbon reduction. Features may vary. Consult your Cat dealer for details.
  - Smart mode matches machine power to digging requirements automatically
  - Automatic Engine Control reduces engine speed when the machine is not under load to minimize fuel consumption
  - Enhanced filters and extended service intervals help decrease maintenance costs
  - The latest hydraulic oil filter provides longer life with a 3,000-hour replacement interval

For more complete information on Cat products, dealer services, and industry solutions, visit us on the web at [www.cat.com](http://www.cat.com)

© 2024 Caterpillar  
All rights reserved

Materials and specifications are subject to change without notice. Featured machines in photos may include additional equipment. See your Cat dealer for available options.

CAT, CATERPILLAR, LET'S DO THE WORK, their respective logos, "Caterpillar Corporate Yellow," the "Power Edge" and Cat "Modern Hex" trade dress as well as corporate and product identity used herein, are trademarks of Caterpillar and may not be used without permission. VisionLink is a trademark of Caterpillar Inc., registered in the United States and in other countries.

AEXQ3958-00 (09-2024)  
Build Number: 05F  
(Indonesia, SE Asia,  
Sri Lanka)

