



333

Hydraulic Excavator

Technical Specifications

Configurations and features may vary by region. Please consult your Cat® dealer for availability in your area.

Table of Contents

| | |
|--|-----------|
| Specifications | 2 |
| Engine | 2 |
| Swing Mechanism | 2 |
| Weights | 2 |
| Track | 2 |
| Drive | 2 |
| Hydraulic System | 2 |
| Service Refill Capacities | 2 |
| Standards | 3 |
| Sound Performance | 3 |
| Operating Weights and Ground Pressures | 3 |
| Major Component Weights | 4 |
| Dimensions | 5 |
| Working Ranges | 6 |
| Bucket Specifications and Compatibility | 7 |
| Attachments Offering Guide | 8 |
| Standard and Optional Equipment | 9 |
| Dealer Installed Kits and Attachments | 11 |
| 333 Environmental Declaration | 12 |

333 Hydraulic Excavator Specifications

Engine

| | | |
|----------------------|--------------------------|---------------------|
| Engine Model | Cat® C7.1 | |
| Net Power | | |
| ISO 9249 | 193.8 kW | 260 hp |
| ISO 9249 (DIN) | 263 hp (metric) | |
| Engine Power | | |
| ISO 14396 | 195 kW | 261 hp |
| ISO 14396 (DIN) | 265 hp (metric) | |
| Bore | 105 mm | 4 in |
| Stroke | 135 mm | 5 in |
| Displacement | 7.01 L | 428 in ³ |
| Biodiesel Capability | Up to B20 ⁽¹⁾ | |

- Cat C7.1 engine emits equivalent to U.S. EPA Tier 3 and EU Stage IIIA.
- Recommended for use up to 4500 m (14,764 ft) altitude with engine power derate above 3000 m (9,842.5 ft).
- Advertised power is tested per the specified standard in effect at the time of manufacture.
- Net power advertised is the power available at the flywheel when the engine is equipped with fan, air intake system, exhaust system and alternator.
- Engine speed at 2,000 rpm.

⁽¹⁾Cat engines are compatible with diesel fuel blended with the following lower-carbon intensity fuels** up to:

- ✓ 100% biodiesel FAME (fatty acid methyl ester)*
- ✓ 100% renewable diesel, HVO (hydrogenated vegetable oil) and GTL (gas-to-liquid) fuels

Refer to guidelines for successful application. Please consult your Cat dealer or “Caterpillar Machine Fluids Recommendations” (SEBU6250) for details.

*For use of blends higher than 20% biodiesel, consult your Cat dealer.

**Tailpipe greenhouse gas emissions from lower-carbon intensity fuels are essentially the same as traditional fuels.

Swing Mechanism

| | | |
|----------------------|----------|---------------|
| Swing Speed* | 11.5 rpm | |
| Maximum Swing Torque | 111 kN·m | 81,869 lbf·ft |

*For CE-marked machine default value may be set lower.

Weights

| | | |
|------------------|-----------|-----------|
| Operating Weight | 32 600 kg | 71,800 lb |
|------------------|-----------|-----------|

- Heavy Duty (HD) Reach boom, HD R3.2 (10'6") stick, HD 1.88 m³ (2.46 yd³) bucket, 600 mm (24") triple grouser shoes, and 7700 kg (16,980 lb) counterweight.

Track

| | | |
|---------------------------------------|--------|-------|
| Optional Track Shoes Width | 600 mm | 24 in |
| Optional Track Shoes Width | 800 mm | 31 in |
| Number of Shoes (each side) | 50 | |
| Number of Track Rollers (each side) | 9 | |
| Number of Carrier Rollers (each side) | 2 | |

Drive

| | | |
|----------------------|----------|------------|
| Gradeability | 35°/70% | |
| Maximum Travel Speed | 5.9 km/h | 3.7 mph |
| Maximum Drawbar Pull | 248 kN | 55,820 lbf |

Hydraulic System

| | | |
|--|---------------------------|----------------------------|
| Main System – Maximum Flow – Implement | 560 L/min (280 × 2 pumps) | 148 gal/min (74 × 2 pumps) |
| Maximum Pressure – Equipment – Normal | 35 000 kPa | 5,075 psi |
| Maximum Pressure – Travel | 35 000 kPa | 5,075 psi |
| Maximum Pressure – Swing | 29 800 kPa | 4,321 psi |
| Boom Cylinder – Bore | 140 mm | 6 in |
| Boom Cylinder – Stroke | 1407 mm | 55 in |
| Stick Cylinder – Bore | 160 mm | 6 in |
| Stick Cylinder – Stroke | 1646 mm | 65 in |
| Bucket Cylinder – Bore | 145 mm | 6 in |
| Bucket Cylinder – Stroke | 1151 mm | 45 in |

Service Refill Capacities

| | | |
|---|--------|-----------|
| Fuel Tank Capacity | 474 L | 125.2 gal |
| Cooling System | 25 L | 6.6 gal |
| Engine Oil (with filter) | 25 L | 6.6 gal |
| Swing Drive | 11.5 L | 3.0 gal |
| Final Drive (each) | 4.5 L | 1.2 gal |
| Hydraulic System (including tank) | 310 L | 81.9 gal |
| Hydraulic Tank (including suction pipe) | 147 L | 38.8 gal |

333 Hydraulic Excavator Specifications

Standards

| | |
|---|---------------------------|
| Brakes | ISO 10265:2008 |
| Cab/Rollover Protective Structure (ROPS) | ISO 12117-2:2008 |
| Cab/Operator Protective Guards (OPG) (optional) | ISO 10262:1998 – Level II |

Sound Performance

| | |
|----------------------------|-----------|
| ISO 6395:2008 (external) | 103 dB(A) |
| ISO 6396:2008 (inside cab) | 73 dB(A) |

- Hearing protection may be needed when operating with an open operator station and cab (when not properly maintained or doors/windows open) for extended periods or in a noisy environment.

Operating Weights and Ground Pressures

| Base Machine Configurations | 600 mm (24") Triple Grouser Shoes | | 600 mm (24") Double Grouser Shoes | | 800 mm (31") Triple Grouser Shoes | |
|---|-----------------------------------|-----------------|-----------------------------------|-----------------|-----------------------------------|-----------------|
| | Weight | Ground Pressure | Weight | Ground Pressure | Weight | Ground Pressure |
| Base Frame with Track Rollers and Carrier Rollers | | | | | | |
| 7700 kg (16,980 lb) Counterweight and Long Undercarriage Base Machine | | | | | | |
| HD Reach Boom + HD R3.2 (10'6") Stick + 1.88 m ³ (2.46 yd ³) HD Bucket | 32 600 (71,800) | 62 (9.0) | 32 900 (72,600) | 63 (9.1) | 33 500 (73,900) | 48 (6.9) |
| HD Reach Boom + HD R2.8 (9'2") Stick + 1.88 m ³ (2.46 yd ³) HD Bucket | 32 500 (71,600) | 62 (9.0) | 32 800 (72,400) | 62 (9.0) | 33 500 (73,700) | 48 (6.9) |

All operating weights include a 90% fuel tank with 75 kg (165 lb) operator.

333 Hydraulic Excavator Specifications

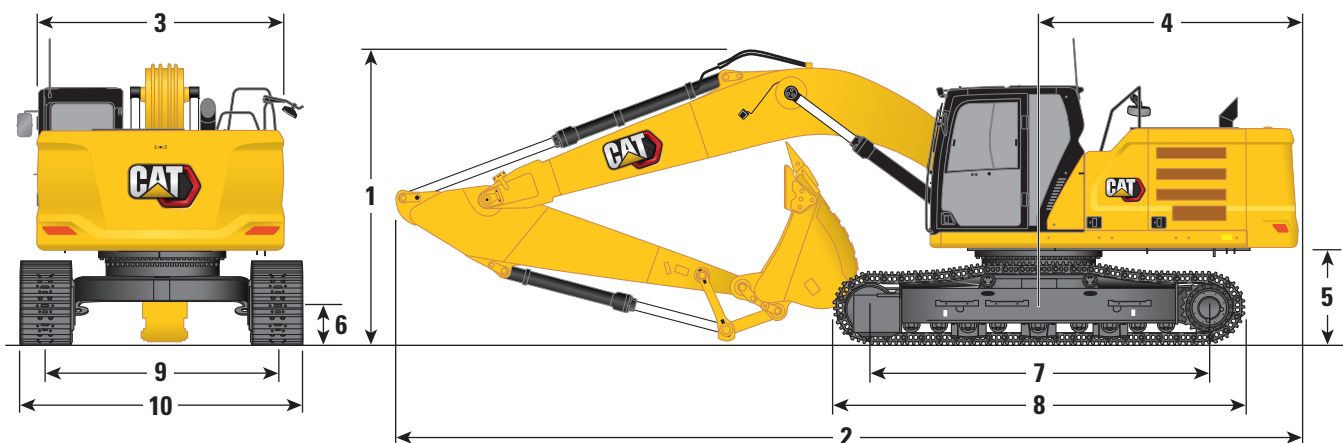
Major Component Weights

| | kg | lb |
|--|--------|--------|
| Base Machine Weight (with 7700 kg [16,980 lb] counterweight, upper frame, long undercarriage with track rollers and two boom cylinders – does not include boom, stick, bucket, stick cylinder, bucket cylinders, tracks, fuel tank and operator) | 22 130 | 48,770 |
| Track Shoes: | | |
| 600 mm (24") Width, 11 mm (0.43") Thick, Triple Grouser Track Shoes | 3650 | 8,040 |
| 600 mm (24") Width, 14.5 mm (0.57") Thick, Double Grouser Track Shoes | 3980 | 8,770 |
| 800 mm (31") Width, 13 mm (0.51") Thick, Triple Grouser Track Shoes with Step Extension | 4610 | 10,160 |
| Two Boom Cylinders | 500 | 1,100 |
| Weight of 90% Fuel Tank and 75 kg (165 lb) Operator | 470 | 1,040 |
| Counterweight: | | |
| 7700 kg (16,980 lb) Counterweight | 7700 | 16,970 |
| Booms (including lines, pins, stick cylinder): | | |
| 6.15 m (20'2") HD Reach Boom | 2770 | 6,110 |
| 5.55 m (18'2") Mass Boom | 2390 | 5,270 |
| 10.2 m (33'6") Super Long Reach Boom | 3250 | 7,160 |
| Sticks (including lines, pins, bucket cylinder, bucket linkage): | | |
| R2.8DB (9'2") HD Reach Stick | 1780 | 3,920 |
| R3.2DB (10'6") HD Reach Stick | 1870 | 4,120 |
| M2.5DB (8'2") Mass Stick (with rebar) | 1730 | 3,800 |
| SLR7.85A (25'9") Super Long Reach (SLR) Stick | 1580 | 3,480 |
| Buckets (without linkage, with tips and side cutters): | | |
| 1.64 m ³ (2.15 yd ³) Severe Duty (SD), DB Linkage | 1770 | 3,900 |
| 1.88 m ³ (2.46 yd ³) HD, DB Linkage | 1680 | 3,700 |
| 1.91 m ³ (2.50 yd ³) Severe Duty Spade (SDS), DB Linkage | 1930 | 4,250 |
| 0.57 m ³ (0.75 yd ³) Ditch Cleaning (DC), A Linkage | 390 | 860 |
| 0.74 m ³ (0.97 yd ³) DC, A Linkage | 460 | 1,010 |

333 Hydraulic Excavator Specifications

Dimensions

All dimensions are approximate and may vary depending on bucket selection.

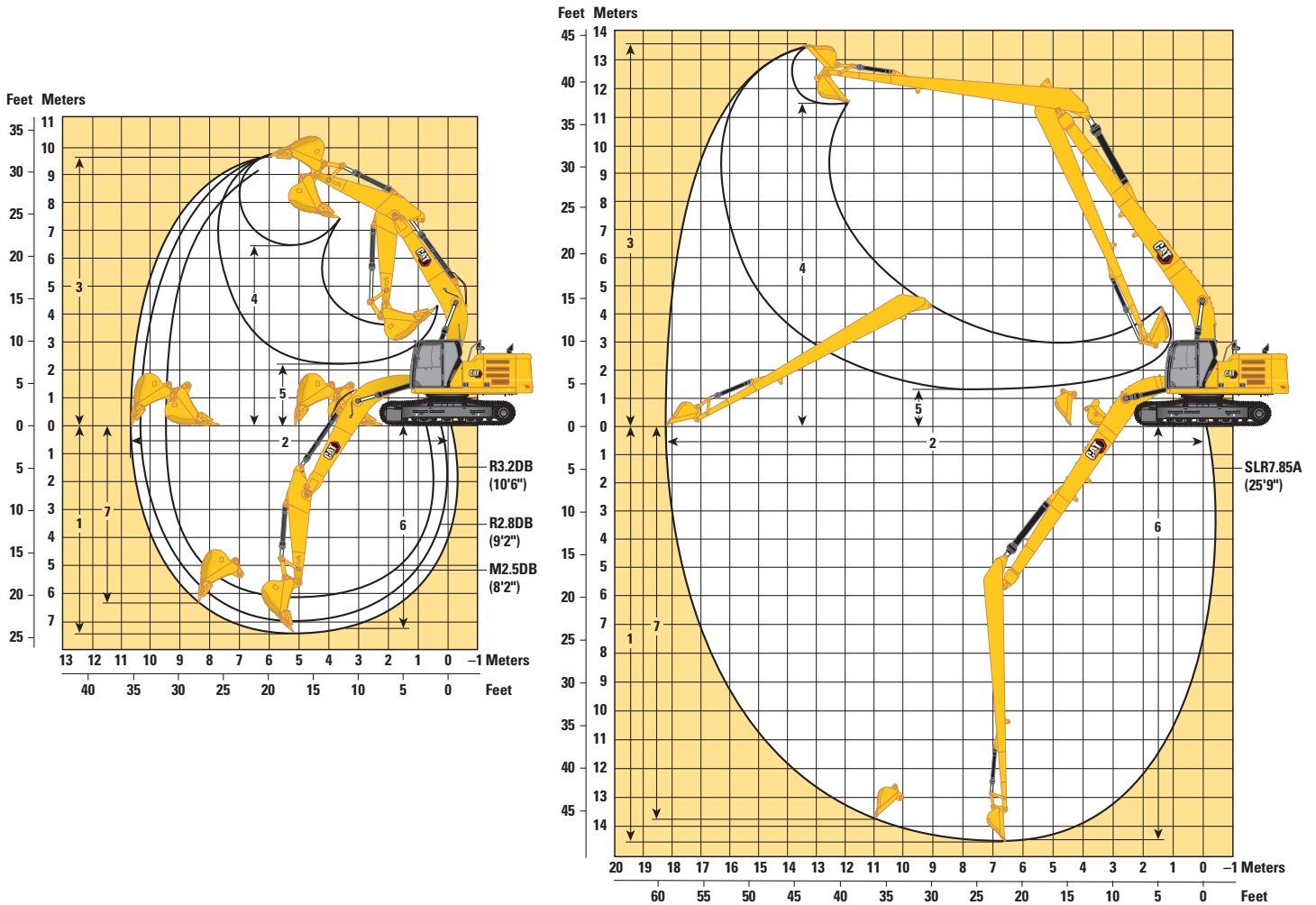


| Boom Options | HD Reach Boom 6.15 m (20'2") | | Mass Boom 5.55 m (18'2") | | SLR Boom 10.2 m (33'6") | | | |
|---|------------------------------------|----------------------|-----------------------------|----------------------|-----------------------------|----------------------|-------------------------------|----------------------|
| Stick Options | HD Reach Stick HD R2.8DB (9'2") | | HD R3.2DB (10'6") | | Mass Stick M2.5DB (8'2") | | SLR Stick SLR7.85A (25'9") | |
| 1 Machine Height: | | | | | | | | |
| Top of Cab Height | 3060 mm | 10'0" | 3060 mm | 10'0" | 3060 mm | 10'0" | 3060 mm | 10'0" |
| Top of OPG Height | 3200 mm | 10'6" | 3200 mm | 10'6" | 3200 mm | 10'6" | 3200 mm | 10'6" |
| Handrail Height | 3060 mm | 10'0" | 3060 mm | 10'0" | 3060 mm | 10'0" | 3060 mm | 10'0" |
| With Boom/Stick/Bucket Installed | 3650 mm | 12'0" | 3580 mm | 11'9" | 3530 mm | 11'7" | 3230 mm | 10'7" |
| With Boom/Stick Installed | 3650 mm | 12'0" | 3580 mm | 11'9" | 3440 mm | 11'3" | 3230 mm | 10'7" |
| With Boom Installed | 3060 mm | 10'0" | 3060 mm | 10'0" | 3060 mm | 10'0" | 3060 mm | 10'0" |
| 2 Machine Length: | | | | | | | | |
| With Boom/Stick/Bucket Installed | 10 450 mm | 34'3" | 10 450 mm | 34'3" | 9870 mm | 32'5" | 14 480 mm | 47'6" |
| With Boom/Stick Installed | 10 450 mm | 34'3" | 10 450 mm | 34'3" | 9850 mm | 32'4" | 14 480 mm | 47'6" |
| With Boom Installed | 9230 mm | 30'3" | 9230 mm | 30'3" | 8600 mm | 28'3" | 13 390 mm | 43'11" |
| 3 Upperframe Width | 2930 mm | 9'7" | 2930 mm | 9'7" | 2930 mm | 9'7" | 2930 mm | 9'7" |
| 4 Tail Swing Radius | 3130 mm | 10'3" | 3130 mm | 10'3" | 3130 mm | 10'3" | 3130 mm | 10'3" |
| 5 Counterweight Clearance | 1120 mm | 3'8" | 1120 mm | 3'8" | 1120 mm | 3'8" | 1120 mm | 3'8" |
| 6 Ground Clearance | 480 mm | 1'7" | 480 mm | 1'7" | 490 mm | 1'7" | 490 mm | 1'7" |
| 7 Track Length – Length to Center of Rollers | 3990 mm | 13'1" | 3990 mm | 13'1" | 3990 mm | 13'1" | 3990 mm | 13'1" |
| 8 Track Length – Overall Length | 4860 mm | 15'11" | 4860 mm | 15'11" | 4860 mm | 15'11" | 4850 mm | 15'11" |
| 9 Track Gauge – Extended | 2740 mm | 9'0" | 2740 mm | 9'0" | 2740 mm | 9'0" | 2740 mm | 9'0" |
| 10 Undercarriage Width: | | | | | | | | |
| 600 mm (24") Shoes | 3340 mm | 10'11" | 3340 mm | 10'11" | 3340 mm | 10'11" | 3340 mm | 10'11" |
| 800 mm (31") Shoes | 3540 mm | 11'7" | 3540 mm | 11'7" | 3540 mm | 11'7" | 3540 mm | 11'7" |
| Bucket Type | HD | | HD | | HD | | DC | |
| Bucket Capacity | 1.88 m ³ | 2.46 yd ³ | 1.88 m ³ | 2.46 yd ³ | 2.36 m ³ | 3.09 yd ³ | 0.57 m ³ | 0.75 yd ³ |
| Bucket Tip Radius | 1784 mm | 5'10" | 1784 mm | 5'10" | 1787 mm | 5'10" | 1073 mm | 3'6" |

333 Hydraulic Excavator Specifications

Working Ranges

All dimensions are approximate and may vary depending on bucket selection.



| Boom Options | HD Reach Boom 6.15 m (20'2") | | Mass Boom 5.55 m (18'2") | | SLR Boom 10.2 m (33'6") | | | |
|--|---------------------------------|----------------------|-----------------------------|----------------------|-----------------------------|-------------------------------|---------------------|----------------------|
| | Stick Options | | Stick Options | | Stick Options | | | |
| | HD R2.8DB (9'2") | HD R3.2DB (10'6") | HD R2.8DB (9'2") | HD R3.2DB (10'6") | Mass Stick M2.5DB (8'2") | SLR Stick SLR7.85A (25'9") | | |
| 1 Maximum Digging Depth | 6970 mm | 22'10" | 7370 mm | 24'2" | 6130 mm | 20'1" | 14 590 mm | 47'10" |
| 2 Maximum Reach at Ground Line | 10 390 mm | 34'1" | 10 680 mm | 35'0" | 9470 mm | 31'1" | 18 270 mm | 59'11" |
| 3 Maximum Cutting Height | 9770 mm | 32'1" | 9660 mm | 31'8" | 9150 mm | 30'0" | 13 620 mm | 44'8" |
| 4 Maximum Loading Height | 6540 mm | 21'5" | 6510 mm | 21'4" | 5970 mm | 19'7" | 11 590 mm | 38'0" |
| 5 Minimum Loading Height | 2580 mm | 8'6" | 2170 mm | 7'1" | 2440 mm | 8'0" | 1330 mm | 4'4" |
| 6 Maximum Depth Cut for 2440 mm (8'0") Level Bottom | 6800 mm | 22'4" | 7200 mm | 23'7" | 5940 mm | 19'6" | 14 490 mm | 47'6" |
| 7 Maximum Vertical Wall Digging Depth | 5270 mm | 17'3" | 6240 mm | 20'6" | 4380 mm | 14'4" | 13 870 mm | 45'6" |
| Bucket Digging Force (ISO) | 197 kN | 44,290 lbf | 197 kN | 44,290 lbf | 211 kN | 47,430 lbf | 62 kN | 13,940 lbf |
| Stick Digging Force (ISO) | 164 kN | 36,870 lbf | 147 kN | 33,050 lbf | 153 kN | 34,400 lbf | 45 kN | 10,120 lbf |
| Bucket Type | HD | | HD | | DC | | DC | |
| Bucket Capacity | 1.88 m ³ | 2.46 yd ³ | 1.88 m ³ | 2.46 yd ³ | 2.36 m ³ | 3.09 yd ³ | 0.57 m ³ | 0.75 yd ³ |
| Bucket Tip Radius | 1784 mm | 5'10" | 1784 mm | 5'10" | 1787 mm | 5'10" | 1073 mm | 3'6" |

333 Hydraulic Excavator Specifications

Bucket Specifications and Compatibility

| | Linkage | Width | | Capacity | | Weight | | Fill % | 7700 kg (16,980 lb) Counterweight | | |
|--|---------|-------|----|----------------|-----------------|--------|-------|--------|-----------------------------------|-------------------|-------------------|
| | | mm | in | m ³ | yd ³ | kg | lb | | HD Reach Boom | | SLR Boom |
| | | | | | | | | | HD R2.8 m (9'2") | HD R3.2 m (10'6") | 7.85A (25'9") SLR |
| Pin-On (No Quick Coupler) | | | | | | | | | | | |
| Heavy Duty | DB | 1500 | 59 | 1.88 | 2.46 | 1557 | 3,432 | 100 | ● | ⊙ | |
| | DB | 1550 | 59 | 1.88 | 2.46 | 1621 | 3,574 | 100 | ⊙ | ⊙ | |
| | DB | 1550 | 61 | 1.88 | 2.46 | 1573 | 3,468 | 100 | ● | ⊙ | |
| | DB | 1600 | 63 | 2.00 | 2.62 | 1632 | 3,598 | 100 | ⊙ | ⊙ | |
| Severe Duty | DB | 1400 | 55 | 1.64 | 2.14 | 1691 | 3,729 | 90 | ● | ● | |
| | DB | 1500 | 59 | 1.90 | 2.49 | 1850 | 4,079 | 90 | ● | ⊙ | |
| | DB | 1550 | 61 | 1.90 | 2.49 | 1877 | 4,138 | 90 | ● | ⊙ | |
| Ditch Cleaning | 312, A | 1200 | 47 | 0.57 | 0.74 | 387 | 855 | 100 | | | ⊙ |
| Maximum load with pin-on (payload + bucket) | | | | | | | | kg | 5342 | 5055 | 1435 |
| | | | | | | | | lb | 11,777 | 11,144 | 3,164 |
| With Pin Grabber Quick Coupler | | | | | | | | | | | |
| Heavy Duty | DB | 1500 | 59 | 1.88 | 2.46 | 1557 | 3,432 | 100 | ⊙ | ⊖ | |
| | DB | 1550 | 59 | 1.88 | 2.46 | 1621 | 3,574 | 100 | ⊖ | ⊖ | |
| | DB | 1550 | 61 | 1.88 | 2.46 | 1573 | 3,468 | 100 | ⊙ | ⊖ | |
| | DB | 1600 | 63 | 2.00 | 2.62 | 1632 | 3,598 | 100 | ⊙ | ⊙ | |
| Severe Duty | DB | 1400 | 55 | 1.64 | 2.14 | 1691 | 3,729 | 90 | ● | ⊙ | |
| | DB | 1500 | 59 | 1.90 | 2.49 | 1850 | 4,079 | 90 | ⊙ | ⊖ | |
| | DB | 1550 | 61 | 1.90 | 2.49 | 1877 | 4,138 | 90 | ⊙ | ⊖ | |
| Ditch Cleaning | 312, A | 1200 | 47 | 0.57 | 0.74 | 387 | 855 | 100 | | | ◇ |
| Maximum load with coupler (payload + bucket) | | | | | | | | kg | 4816 | 4529 | 909 |
| | | | | | | | | lb | 10,617 | 9,984 | 2,003 |

The above loads are in compliance with hydraulic excavator standard EN474-5:2006+A3:2013, they do not exceed 87% of hydraulic lifting capacity or 75% of tipping capacity with front linkage fully extended at ground line with bucket curled.

Capacity based on ISO 7451:2007.

Bucket weight with General Duty tips.

Maximum Material Density:

- 2100 kg/m³ (3,500 lb/yd³)
- ⊙ 1800 kg/m³ (3,000 lb/yd³)
- ⊖ 1500 kg/m³ (2,500 lb/yd³)
- ◇ 900 kg/m³ (1,500 lb/yd³)

Caterpillar recommends using appropriate work tools to maximize the value customers receive from our products. Use of work tools, including buckets, which are outside of Caterpillar's recommendations or specifications for weight, dimensions, flows, pressures, etc. may result in less-than-optimal performance, including but not limited to reductions in production, stability, reliability, and component durability. Improper use of a work tool resulting in sweeping, prying, twisting and/or catching of heavy loads will reduce the life of the boom and stick.

333 Hydraulic Excavator Specifications

Attachments Offering Guide

Not all Attachments are available in all regions. Consult your Cat dealer for configurations available in your region.

Match

No Match

PIN-ON ATTACHMENTS

| Boom Type | Stick Length | HD Reach | | Mass Reach |
|-------------------|--------------------|------------------|-------------------|---------------|
| | | HD R2.8 m (9'2") | HD R3.2 m (10'6") | M2.5 m (8'2") |
| Hydraulic Hammers | H130 GC | ✓ | ✓ | ✓ |
| | H130 GC S | ✓ | ✓ | ✓ |
| | H140 GC | ✓ | ✓ | ✓ |
| | H140 GC Side Mount | ✓ | ✓ | ✓ |
| | H140 GC S | ✓ | ✓ | ✓ |
| | H160 GC | ✓ | ✓ | ✓ |
| | H160 GC S | ✓ | ✓ | ✓ |
| | H180 GC S | | | ✓ |
| Rotary Cutters | RC30 | ✓ | ✓ | ✓ |

Standard and Optional Equipment

Standard and optional equipment may vary. Consult your Cat dealer for details.

| | Standard | Optional | | Standard | Optional |
|---|----------|----------|---|----------------|----------------|
| BOOMS, STICKS AND LINKAGES | | | CAT TECHNOLOGY | | |
| 6.15 m (20'2") HD Reach boom | | ✓ | Cat Equipment Management: | | |
| 5.55 m (18'2") Mass boom (with rebar) | | ✓ | VisionLink® | ✓ ¹ | |
| 10.2 m (33'6") Super Long Reach boom | | ✓ | VisionLink Productivity | | ✓ ² |
| 2.8 m (9'2") HD Reach stick | | ✓ | Remote Flash | ✓ | |
| 3.2 m (10'6") HD Reach stick | | ✓ | ELECTRICAL SYSTEM | | |
| 2.5 m (8'2") Mass stick | | ✓ | Maintenance-free 1,000 CCA batteries | ✓ | |
| 7.85 m (25'9") Super Long Reach stick | | ✓ | Centralized electrical disconnect switch | ✓ | |
| Bucket linkage, DB-type with lifting eye | | ✓ | Programmable time-delay working lights | ✓ | |
| Bucket linkage, DB-type without lifting eye | | ✓ | LED chassis, boom and cab lights | ✓ | |
| Bucket linkage, A-type with lifting eye | | ✓ | ENGINE | | |
| Bucket linkage, A-type without lifting eye | | ✓ | Cat® C7.1 single turbo diesel engine | ✓ | |
| CAB | | | Two selectable modes: Power, Smart | ✓ | |
| ROPS | ✓ | | 4500 m (14,760 ft) altitude capability with engine power derate above 3000 m (9,840 ft) | ✓ | |
| OPG | | ✓ | Electric cooling fans with auto-reverse function | ✓ | |
| High-resolution 203 mm (8") LCD touchscreen monitor | ✓ | | Auto engine speed control | ✓ | |
| Auto bi-level air conditioner | ✓ | | Auto engine idle shutdown | ✓ | |
| Keyless push-to-start engine control | ✓ | | Electric fuel priming pump | ✓ | |
| Height-adjustable console, three steps with tool | ✓ | | 50° C (122° F) high-ambient cooling capacity | ✓ | |
| Fixed left-side console | ✓ | | -18° C (0° F) cold start capability | ✓ | |
| Mechanical-suspension seat | ✓ | | Double element air filter with integrated pre-cleaner | ✓ | |
| 51 mm (2") seat belt | ✓ | | 2 × 115 Amp dual alternator | ✓ | |
| Bluetooth integrated radio with USB/Aux ports | ✓ | | Two-stage fuel filtration system with water separator and indicator | ✓ | |
| 24V DC outlet | ✓ | | | | |
| Document storage | ✓ | | | | |
| Cup holder | ✓ | | | | |
| Beverage holder | ✓ | | | | |
| Openable two-piece front window | ✓ | | | | |
| Rear window emergency exit | ✓ | | | | |
| Upper radial wiper with washer | ✓ | | | | |
| Openable steel hatch | ✓ | | | | |
| LED dome light | ✓ | | | | |
| Roller front sunscreen | ✓ | | | | |
| Roller rear sunscreen | | ✓ | | | |
| Washable floor mat | ✓ | | | | |
| Beacon ready | ✓ | | | | |
| Cat Stick Steer | | ✓ | | | |

(continued on next page)

¹Provides core telematics data to manage health, maintenance insights, and condition monitoring. Other plans available for more comprehensive data reporting. Consult your Cat dealer for details.

²VisionLink subscription required. Consult your Cat dealer for details.

333 Standard and Optional Equipment

Standard and Optional Equipment *(continued)*

Standard and optional equipment may vary. Consult your Cat dealer for details.

| | Standard | Optional | | Standard | Optional |
|---|----------|----------|---|----------|----------|
| HYDRAULIC SYSTEM | | | SERVICE AND MAINTENANCE | | |
| Electronic main control valve | ✓ | | Side entry to service platform | ✓ | |
| Boom and stick regeneration circuits | ✓ | | Grouped location of engine oil and fuel filters | ✓ | |
| Tandem type electronic main pump | ✓ | | Scheduled Oil Sampling (S·O·S SM) ports | ✓ | |
| Auto warm up | ✓ | | Ground-level 2nd dipstick for engine oil | ✓ | |
| Auto two-speed travel | ✓ | | Integrated vehicle health management system | ✓ | |
| Boom and stick drift reduction valve | ✓ | | UNDERCARRIAGE AND STRUCTURES | | |
| Element type main hydraulic filter | ✓ | | Long undercarriage | ✓ | |
| SAFETY AND SECURITY | | | 600 mm (24") double grouser track shoes | | ✓ |
| Auto hammer stop | ✓ | | 600 mm (24") triple grouser track shoes | | ✓ |
| Rearview camera | ✓ | | 800 mm (31") triple grouser track shoes | | ✓ |
| Right-hand-side mirror | | ✓ | Three-piece segmented track guiding guards | | ✓ |
| Right-hand-sideview cameras | ✓ | | Full-length segmented track guiding guards | | ✓ |
| Ground-level engine shutoff switch | ✓ | | Travel motor guards | ✓ | |
| Lockable disconnect switch | ✓ | | Bottom guards | ✓ | |
| Right-hand handrail and hand hold | ✓ | | Swivel guard | ✓ | |
| Signaling/warning horn | ✓ | | Grease lubricated track links | ✓ | |
| Service platform with anti-skid plate and countersunk bolts | ✓ | | 7700 kg (16,980 lb) counterweight | ✓ | |
| Hydraulic lock out lever neutralizes all controls | ✓ | | | | |
| Travel alarm | | ✓ | | | |
| Swing alarm | | ✓ | | | |

Dealer Installed Kits and Attachments

Attachments may vary. Consult your Cat dealer for details.

CAB

- RH electrical pedal (two-way) for tool control
- LH electrical pedal (two-way) for tool control
- Radial lower wiper for two piece (70/30) windshield, with washer
- Polycarbonate roof hatch
- P5A laminated glass front windshield and roof hatch (for EU demolition regulation)

GUARDS

- Falling object guard system (not compatible with cab light cover, rain protector)
- Mesh guard full front (not compatible with cab light cover, rain protector)
- Mesh guard lower half front
- Full protecting vandalism guard (not compatible with cab light cover, rain protector)

SERVICE AND MAINTENANCE

- Grease gun holder

SAFETY AND SECURITY

- Bluetooth receiver kit
- 75 mm (3") retractable seat belt

333 Environmental Declaration

The following information applies to the machine at the time of final manufacture as configured for sale in the regions covered in this document. The content of this declaration is valid as of the date issued; however, content related to machine features and specifications are subject to change without notice. For additional information, please see the machine's Operation and Maintenance Manual.

For more information on sustainability in action and our progress, please visit <https://www.caterpillar.com/en/company/sustainability>.

Engine

- The Cat® C7.1 engine emits equivalent to U.S. EPA Tier 3 and EU Stage IIIA.
- Cat engines are compatible with diesel fuel blended with the following lower-carbon intensity fuels** up to:
 - ✓ 100% biodiesel FAME (fatty acid methyl ester)*
 - ✓ 100% renewable diesel, HVO (hydrogenated vegetable oil) and GTL (gas-to-liquid) fuels

Refer to guidelines for successful application. Please consult your Cat dealer or "Caterpillar Machine Fluids Recommendations" (SEBU6250) for details.

**For use of blends higher than 20% biodiesel, consult your Cat dealer.*

***Tailpipe greenhouse gas emissions from lower-carbon intensity fuels are essentially the same as traditional fuels.*

Air Conditioning System

- The air conditioning system on this machine contains the fluorinated greenhouse gas refrigerant R134a (Global Warming Potential = 1430). The system contains 0.85 kg (1.9 lb) of refrigerant which has a CO₂ equivalent of 1.216 metric tonnes (1.340 tons).

Paint

- Based on best available knowledge, the maximum allowable concentration, measured in parts per million (PPM), of the following heavy metals in paint are:
 - Barium < 0.01%
 - Cadmium < 0.01%
 - Chromium < 0.01%
 - Lead < 0.01%

Sound Performance

ISO 6395:2008 (external) 103 dB(A)

ISO 6396:2008 (inside cab) 73 dB(A)

- Hearing protection may be needed when operating with an open operator station and cab (when not properly maintained or doors/windows open) for extended periods or in a noisy environment.

Oils and Fluids

- Caterpillar factory fills with ethylene glycol coolants. Cat Diesel Engine Antifreeze/Coolant (DEAC) and Cat Extended Life Coolant (ELC) can be recycled. Consult your Cat dealer for more information.
- Cat Bio HYDO™ Advanced is an EU Ecolabel approved biodegradable hydraulic oil.
- Additional fluids are likely to be present, please consult the Operations and Maintenance Manual or the Application and Installation guide for complete fluid recommendations and maintenance intervals.

Features and Technology

- The following features and technology may contribute to fuel savings and/or carbon reduction. Features may vary. Consult your Cat dealer for details.
 - Smart mode matches machine power to digging requirements automatically
 - Push-to-start engine with automatic engine speed control
 - Extended service intervals help decrease maintenance costs
 - Reduce fuel consumption with the high-efficiency hydraulic fan that cools the engine on demand
 - The latest hydraulic oil filter provides longer life with a 3,000-hour replacement interval

For more complete information on Cat products, dealer services, and industry solutions, visit us on the web at www.cat.com

© 2024 Caterpillar
All rights reserved

Materials and specifications are subject to change without notice. Featured machines in photos may include additional equipment. See your Cat dealer for available options.

CAT, CATERPILLAR, LET'S DO THE WORK, their respective logos, "Caterpillar Corporate Yellow," the "Power Edge" and Cat "Modern Hex" trade dress as well as corporate and product identity used herein, are trademarks of Caterpillar and may not be used without permission. VisionLink is a trademark of Caterpillar Inc., registered in the United States and in other countries.

AEXQ3992-00 (09-2024)
Build Number: 07H
(Hong Kong, Taiwan)

