



# 330

## Hydraulic Excavator

# Technical Specifications

Configurations and features may vary by region. Please consult your Cat® dealer for availability in your area.

## Table of Contents

<b>Specifications</b>	<b>2</b>
Engine	2
Swing Mechanism	2
Weights	2
Track	2
Drive	2
Hydraulic System	2
Service Refill Capacities	2
Standards	2
Sound Performance	2
Operating Weights and Ground Pressures	3
Major Component Weights	3
Dimensions	4
Working Ranges and Forces	5
Bucket Specifications and Compatibility	6
Attachments Offering Guide	7
<b>Standard and Optional Equipment</b>	<b>8</b>
<b>Dealer Installed Kits and Attachments</b>	<b>10</b>
<b>Cab Options</b>	<b>11</b>
<b>330 Environmental Declaration</b>	<b>12</b>

# 330 Hydraulic Excavator Specifications

## Engine

Engine Model	Cat® C7.1	
Net Power		
ISO 9249	203.7 kW	273 hp
ISO 9249 (DIN)	277 hp (metric)	
Engine Power		
ISO 14396	205 kW	275 hp
ISO 14396 (DIN)	279 hp (metric)	
Bore	105 mm	4 in
Stroke	135 mm	5 in
Displacement	7.01 L	428 in <sup>3</sup>
Biodiesel capability	Up to B20 <sup>(1)</sup>	

- Meets U.S. EPA Tier 4 Final, EU Stage V, Korea Stage V, and Japan 2014 emission standards.
- Recommended for use up to 4500 m (14,760 ft) altitude with engine power derate above 3000 m (9,840 ft).
- Advertised power is tested per the specified standard in effect at the time of manufacture.
- Net power advertised is the power available at the flywheel when the engine is equipped with fan, air intake system, exhaust system and alternator.
- Engine speed at 2,200 rpm.

<sup>(1)</sup>Cat diesel engines are required to use ULSD (ultra-low sulfur diesel fuel with 15 ppm of sulfur or less) and are compatible\* with ULSD blended with the following lower-carbon intensity fuels\*\* up to:

- ✓ 20% biodiesel FAME (fatty acid methyl ester)\*\*\*
- ✓ 100% renewable diesel, HVO (hydrogenated vegetable oil) and GTL (gas-to-liquid) fuels

Refer to guidelines for successful application. Please consult your Cat dealer or “Caterpillar Machine Fluids Recommendations” (SEBU6250) for details.

\* While Cat engines are compatible with these alternative fuels, some regions may not allow their use.

\*\* Tailpipe greenhouse gas emissions from lower-carbon intensity fuels are essentially the same as traditional fuels.

\*\*\* Engines with no aftertreatment devices are compatible with higher blends, up to 100% biodiesel (for use of blends higher than 20% biodiesel, consult your Cat dealer)/fuels.

## Swing Mechanism

Swing Speed	11.5 rpm	
Maximum Torque	110 kN·m	81,132 lbf·ft

## Weights

Operating Weight	30 100 kg	66,400 lb
<ul style="list-style-type: none"> <li>• Long undercarriage, Reach boom, R3.2 m (10'6") stick, General Duty Excavation (GDX) 1.20 m<sup>3</sup> (1.57 yd<sup>3</sup>) bucket, 600 mm (24") triple grouser shoes and 6700 kg (14,770 lb) counterweight.</li> </ul>		

## Track

Optional Track Shoes Width	600 mm	24 in
Optional Track Shoes Width	800 mm	31 in
Number of Shoes (each side)	50	
Number of Track Rollers (each side)	9	
Number of Carrier Rollers (each side)	2	

## Drive

Gradeability	35°/70%	
Maximum Travel Speed	5.3 km/h	3.3 mph
Maximum Drawbar Pull	248 kN	55,753 lbf

## Hydraulic System

Main System – Maximum Flow – Implement	560 L/min (280 × 2 pumps)	148 gal/min (74 × 2 pumps)
Maximum Pressure – Equipment – Normal	35 000 kPa	5,075 psi
Maximum Pressure – Travel	35 000 kPa	5,075 psi
Maximum Pressure – Swing	29 800 kPa	4,320 psi
Boom Cylinder – Bore	140 mm	6 in
Boom Cylinder – Stroke	1407 mm	55 in
Stick Cylinder – Bore	150 mm	6 in
Stick Cylinder – Stroke	1646 mm	65 in
Bucket Cylinder – Bore	135 mm	5 in
Bucket Cylinder – Stroke	1156 mm	46 in

## Service Refill Capacities

Fuel Tank Capacity	474 L	125.2 gal
Cooling System	25 L	6.6 gal
Engine Oil	25 L	6.6 gal
Swing Drive	10 L	2.6 gal
Final Drive (each)	5.5 L	1.5 gal
Hydraulic System (including tank)	310 L	81.9 gal
Hydraulic Tank	147 L	38.8 gal
Diesel Exhaust Fluid (DEF) Tank	41 L	10.8 gal

## Standards

Brakes	ISO 10265:2008
Cab/Rollover Protective Structure (ROPS)	ISO 12117-2:2008
Operator Protective Guards (OPG) (optional)	ISO 10262:1998 Level II

## Sound Performance

ISO 6395:2008 (external)	103 dB(A)
ISO 6396:2008 (inside cab)	70 dB(A)

- External Sound – The spectator sound power level is measured according to the test procedures and conditions specified in ISO 6395:2008 for a Cat machine that is properly equipped and maintained. The measurements were conducted at 70% of the maximum engine cooling fan speed.
- Internal Sound – The operator sound pressure level is measured according to the test procedures and conditions specified in ISO 6396:2008 for a cab offered by Caterpillar, when properly installed and maintained and tested with the door and windows closed. The measurements were conducted at 70% of the maximum engine cooling fan speed.
- Hearing protection may be needed when operating with an open operator station and cab (when not properly maintained for doors/windows open) for extended periods or in noisy environment(s).

# 330 Hydraulic Excavator Specifications

## Operating Weights and Ground Pressures

	600 mm (24") Triple Grouser Shoes		600 mm (24") Double Grouser Shoes		800 mm (31") Triple Grouser Shoes	
	Weight	Ground Pressure	Weight	Ground Pressure	Weight	Ground Pressure
	kg (lb)	kPa (psi)	kg (lb)	kPa (psi)	kg (lb)	kPa (psi)
<b>Base Machine Configurations</b>						
<b>Base Frame with Track Rollers and Carrier Rollers</b>						
<b>6700 kg (14,770 lb) Counterweight + Long Undercarriage Base Machine</b>						
Reach Boom + R3.2CB2 (10'6") Stick + 1.20 m <sup>3</sup> (1.57 yd <sup>3</sup> ) GDX Bucket	30 100 (66,400)	57 (8.3)	30 400 (67,000)	58 (8.4)	31 100 (68,600)	44 (6.4)
HD Reach Boom + R3.2CB2 (10'6") HD Stick + 1.20 m <sup>3</sup> (1.57 yd <sup>3</sup> ) GDX Bucket	30 400 (67,000)	58 (8.4)	30 700 (67,700)	58 (8.5)	31 300 (69,000)	45 (6.5)

All operating weights include a 90% fuel tank with 75 kg (165 lb) operator.

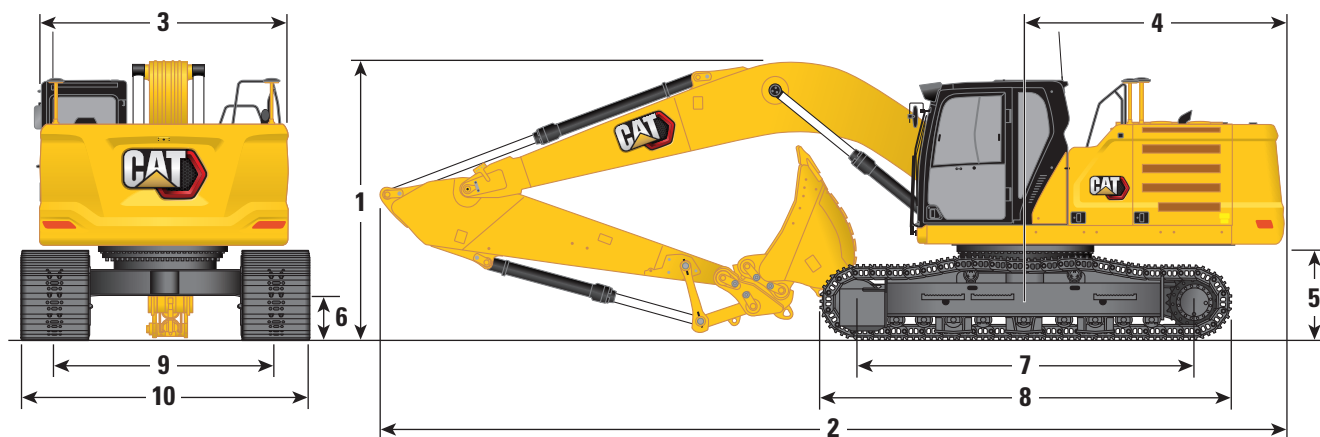
## Major Component Weights

	kg	lb
Base machine (6700 kg [14,770 lb] counterweight, upper frame, long undercarriage with HD rollers and two boom cylinders) – does not include weight of 90% fuel tank and 75 kg (165 lb) operator.	21 200	46,700
Track Shoes:		
600 mm (24") Width, 11 mm (0.43") Thick, Triple Grouser Track Shoes	3620	7,980
600 mm (24") Width, 14.5 mm (0.57") Thick, Double Grouser Track Shoes	3960	8,700
800 mm (31") Width, 13 mm (0.51") Thick, Triple Grouser Track Shoes with Step Extension	4590	10,120
Two Boom Cylinders	490	1,080
Weight of 90% Fuel Tank and 75 kg (165 lb) Operator	460	1,010
Counterweight:		
6700 kg (14,770 lb) Counterweight	6700	14,770
Booms (including lines, pins, stick cylinder):		
Reach Boom 6.15 m (20'2")	2310	5,090
HD Reach Boom 6.15 m (20'2")	2420	5,340
Sticks (including lines, pins, bucket cylinder, bucket linkage):		
Reach Stick R3.2CB2 (10'6")	1470	3,240
HD Reach Stick R3.2CB2 (10'6")	1610	3,550
Buckets (without linkage):		
1.50 m <sup>3</sup> (1.96 yd <sup>3</sup> ) GDX, CB Linkage	1160	2,600
1.20 m <sup>3</sup> (1.57 yd <sup>3</sup> ) GDX, CB Linkage	1030	2,300
1.30 m <sup>3</sup> (1.70 yd <sup>3</sup> ) HDX, CB Linkage	1210	2,700
1.10 m <sup>3</sup> (1.44 yd <sup>3</sup> ) GDX, CB Linkage	980	2,200
Quick Couplers (QC):		
Pin Grabber QC CB with Pins	530	1,170
Pin Grabber QC CB without Pins	500	1,100
Dedicated QC	430	950

# 330 Hydraulic Excavator Specifications

## Dimensions

All dimensions are approximate and may vary depending on bucket selection.



### Boom Option

Reach/HD Reach Boom  
6.15 m (20'2")

### Stick Option

Reach/HD Reach Stick  
R3.2CB2 (10'6")

#### 1 Machine Height:

Cab Height	3060 mm	10'0"
Top of Global Navigation Satellite System (GNSS) Antenna Height (if installed)	3080 mm	10'1"
OPG Height	3200 mm	10'6"
Handrail Height	3060 mm	10'0"
With Boom/Stick/Bucket Installed	3400 mm	11'2"
With Boom/Stick Installed	3380 mm	11'1"
With Boom Installed	3060 mm	10'0"

#### 2 Machine Length:

With Boom/Stick/Bucket Installed	10 420 mm	34'2"
With Boom/Stick Installed	10 420 mm	34'2"
With Boom Installed	9230 mm	30'3"

#### 3 Upperframe Width

2940 mm 9'8"

#### 4 Tail Swing Radius

3130 mm 10'3"

#### 5 Counterweight Clearance

1120 mm 3'8"

#### 6 Ground Clearance

490 mm 1'7"

#### 7 Length to Center of Rollers

3990 mm 13'1"

#### 8 Track Length

4860 mm 15'11"

#### 9 Track Gauge

2590 mm 8'6"

#### 10 Undercarriage Width

600 mm (24") Shoes	3190 mm	10'6"
800 mm (31") Shoes	3390 mm	11'1"

#### Bucket Type

GDX

#### Bucket Capacity

1.20 m<sup>3</sup> 1.57 yd<sup>3</sup>

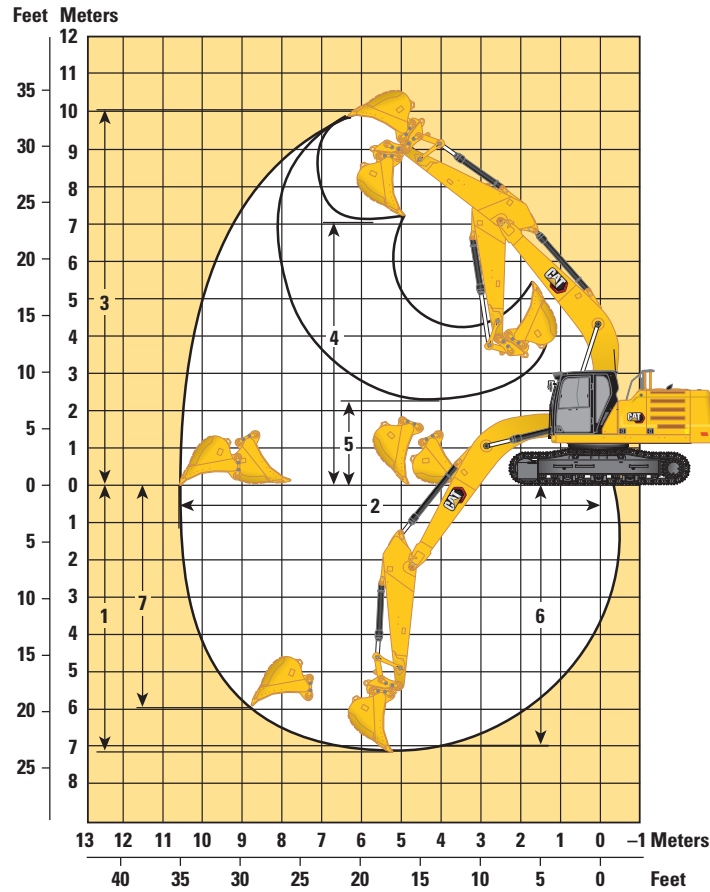
#### Bucket Tip Radius

1580 mm 5'2"

# 330 Hydraulic Excavator Specifications

## Working Ranges and Forces

All dimensions are approximate and may vary depending on bucket selection.



Boom Option	Reach/HD Reach Boom 6.15 m (20'2")	
Stick Option	Reach/HD Reach Stick R3.2CB2 (10'6")	
1 Maximum Digging Depth	7160 mm	23'6"
2 Maximum Reach at Ground Line	10 600 mm	34'9"
3 Maximum Cutting Height	10 020 mm	32'10"
4 Maximum Loading Height	7030 mm	23'1"
5 Minimum Loading Height	2380 mm	7'10"
6 Maximum Depth Cut for 2440 mm (8'0") Level Bottom	7000 mm	23'0"
7 Maximum Vertical Wall Digging Depth	5950 mm	19'6"
Bucket Digging Force (ISO)	179 kN	40,240 lbf
Stick Digging Force (ISO)	126 kN	28,330 lbf
Bucket Type	GDX	
Bucket Capacity	1.20 m <sup>3</sup>	1.57 yd <sup>3</sup>
Bucket Tip Radius	1580 mm	5'2"

# 330 Hydraulic Excavator Specifications

## Bucket Specifications and Compatibility

	Linkage	Width		Capacity		Weight		Fill	Reach Boom	HD Reach Boom
		mm	in	m³	yd³	kg	lb	%	R3.2 (10' 6")	HD R3.2 (10' 6")
Pin-On (No Quick Coupler)										
General Duty Excavation	CB	1300	51	1.10	1.44	983	2,167	100	●	●
	CB	1350	54	1.20	1.57	1034	2,280	100	●	●
	CB	1650	66	1.50	1.96	1157	2,552	100	●	●
Heavy Duty Excavation	CB	1300	51	1.10	1.44	1110	2,447	100	●	●
	CB	1450	57	1.30	1.70	1213	2,674	100	●	●
Maximum load with pin-on (payload + bucket)								kg	4605	4450
								lb	10,152	9,811
With Pin Grabber Quick Coupler										
General Duty Excavation	CB	1300	51	1.10	1.44	983	2,167	100	●	●
	CB	1350	54	1.20	1.57	1034	2,280	100	●	●
	CB	1650	66	1.50	1.96	1157	2,552	100	⊙	⊙
Heavy Duty Excavation	CB	1300	51	1.10	1.44	1110	2,447	100	●	●
	CB	1450	57	1.30	1.70	1213	2,674	100	●	●
Maximum load with coupler (payload + bucket)								kg	4079	3924
								lb	8,992	8,650

The above loads are in compliance with hydraulic excavator standard EN 474-5:2022/AC:2022, they do not exceed 87% of hydraulic lifting capacity or 75% of tipping capacity with front linkage fully extended at ground line with bucket curled.

Capacity based on ISO 7451:2007.

Bucket weight with General Duty tips.

**Maximum Material Density:**

- 2100 kg/m³ (3,500 lb/yd³)
- ⊙ 1800 kg/m³ (3,000 lb/yd³)

Caterpillar recommends using appropriate work tools to maximize the value customers receive from our products. Use of work tools, including buckets, which are outside of Caterpillar's recommendations or specifications for weight, dimensions, flows, pressures, etc. may result in less-than-optimal performance, including but not limited to reductions in production, stability, reliability, and component durability. Improper use of a work tool resulting in sweeping, prying, twisting and/or catching of heavy loads will reduce the life of the boom and stick.

# 330 Hydraulic Excavator Specifications

## Attachments Offering Guide

Not all Attachments are available in all regions. Consult your Cat dealer for configurations available in your region.

☒ Match

### PIN-ON ATTACHMENTS

Boom Type		Reach	HD Reach
Stick Length		R3.2 (10'6")	HD R3.2 (10'6")
Hydraulic Hammers	H130 GC	✓	✓
	H130 S	✓	✓
	H140 GC Side Mount	✓	✓
	H140 S	✓	✓
	H160 S	✓	✓
Rotary Cutters	RC30	✓	✓
	RC50	✓	✓

### CAT PIN GRABBER COUPLER ATTACHMENTS

Boom Type		Reach	HD Reach
Stick Length		R3.2 (10'6")	HD R3.2 (10'6")
Hydraulic Hammers	H130 GC Side Mount	✓	✓
	H130 S	✓	✓
	H140 GC Side Mount	✓	✓
	H140 S	✓	✓
	H160 S	✓	✓
Rotary Cutters	RC30	✓	✓
	RC50	✓	✓*

### BOOM-MOUNT ATTACHMENTS

Boom Type		Reach	HD Reach
Mobile Scrap and Demolition Shears	S2070	✓	✓
	S3050 Flat Top	✓	✓

# 330 Standard and Optional Equipment

## Standard and Optional Equipment

Standard and optional equipment may vary. Consult your Cat® dealer for details.

	Standard	Optional		Standard	Optional
<b>CAT TECHNOLOGY</b>			<b>ENGINE</b>		
Cat Equipment Management:			Cat C7.1 twin turbo diesel engine	✓	
– VisionLink™	✓ <sup>1</sup>		Three selectable modes: Power, Smart, Eco	✓	
– Remote Flash	✓		Auto engine speed control	✓	
– Remote Troubleshoot	✓		Auto engine idle-shutdown	✓	
– Work tool recognition and tracking (PL161)	✓		4500 m (14,760 ft) altitude capability with engine power derate above 3000 m (9,840 ft)	✓	
– Operator Coaching		✓ <sup>2</sup>	50° C (122° F) high-ambient cooling capability with derate	✓	
Cat Grade:			–18° C (0° F) cold start capability	✓	
– Cat Grade with 2D	✓		–32° C (–25° F) cold start capability		✓
– Cat Grade with 2D with Attachment Ready Option (ARO)		✓	Cold start block heaters		✓
– Laser catcher		✓	2 × 115 amp dual alternator	✓	
– Cat Grade with 3D (single or dual GNSS)		✓	Sealed double element air filter with integrated pre-cleaner	✓	
– Compatible with 3D grade systems from Trimble, Topcon, and Leica	✓		Two-stage fuel filtration with water separator and indicator	✓	
– Cat Grade 3D Ready		✓	Electric fuel priming pump	✓	
– Cat Grade Connectivity		✓ <sup>3</sup>	Electric cooling fans with auto-reverse function	✓	
Cat Assist:			<b>HYDRAULIC SYSTEM</b>		
– Grade Assist	✓		Electronic main control valve	✓	
– Boom Assist	✓		Electric boom regeneration circuit	✓	
– Bucket Assist	✓		Stick regeneration circuit	✓	
– Swing Assist	✓		Automatic hydraulic oil warm up	✓	
Cat Payload:			Automatic two-speed travel	✓	
– On-the-go weighing	✓		Boom and stick drift reduction valve	✓	
– Semiautomatic calibration	✓		High performance hydraulic return filter	✓	
– Payload/cycle information	✓		Hammer return filter circuit		✓
– VisionLink back office reporting		✓ <sup>3</sup>	Advanced Tool Control (two pump, one/two way high-pressure flow)		✓
Cat Advanced Payload:			Medium-pressure circuit		✓
– Daily totals		✓	Hydraulic efficiency monitoring		✓
– Custom lists		✓	Common Quick Coupler Circuit for Cat Pin Grabber and CW Dedicated		✓
– Smart weight target		✓	Electronic Pattern Changer (requires activation)	✓	
– E-ticket Integration		✓ <sup>3</sup>			
Other:					
Cat Tiltrotator (TRS) integration		✓			

<sup>1</sup>Provides core telematics data to manage health, maintenance insights, and condition monitoring. Other plans available for more comprehensive data reporting. Consult your Cat dealer for details.

<sup>2</sup>VisionLink subscription required for back office reporting. Consult your Cat dealer for details.

<sup>3</sup>VisionLink subscription required. Consult your Cat dealer for details.

(continued on next page)

## Standard and Optional Equipment *(continued)*

Standard and optional equipment may vary. Consult your Cat dealer for details.

	Standard	Optional		Standard	Optional
<b>BOOMS, STICKS AND LINKAGE</b>			<b>SERVICE AND MAINTENANCE</b>		
6.15 m (20'2") Reach boom	✓		Grouped location of engine oil and fuel filters	✓	
6.15 m (20'2") HD Reach boom		✓	Ground-level second dipstick for engine oil	✓	
3.2 m (10'6") Reach stick	✓		Side entry to service platform	✓	
3.2 m (10'6") HD Reach stick		✓	S-O-S <sup>SM</sup> ports	✓	
Bucket Linkage, CB2 family, Cat Grade	✓		Radiator screen		✓
<b>UNDERCARRIAGE AND STRUCTURES</b>			Integrated vehicle health management system	✓	
Full-length track guiding guards		✓	<b>SAFETY AND SECURITY</b>		
Segmented track guiding guards	✓		Cat Command (remote control)		✓
Swivel guard	✓		2D E-Fence:	✓	
HD bottom guard	✓		– E-ceiling		
HD travel motor guard	✓		– E-floor		
Grease lubricated track	✓		– E-swing		
Swing drive and motor, and swing bearing for higher swing torque	✓		– E-wall		
Base frame with HD rollers	✓		– E-cab avoidance		
Tie-down points on base frame	✓		Auto hammer stop	✓	
6700 kg (14,770 lb) counterweight	✓		Rearview camera	✓	
600 mm (24") triple grouser track shoes	✓		Right-hand-sideview camera	✓	
600 mm (24") double grouser track shoes		✓	360° visibility		✓
800 mm (31") triple grouser track shoes		✓	Secure start with PIN code	✓	
<b>ELECTRICAL SYSTEM</b>			Caterpillar One Key security system	✓	
Maintenance-free 1,000 CCA batteries (×2)	✓		Lockable external tool/storage box	✓	
Programmable time-delay LED working lights	✓		Lockable door, fuel, and hydraulic tank locks	✓	
Centralized electrical disconnect switch	✓		Lockable fuel drain compartment	✓	
LED chassis light, left-hand and right-hand boom lights, cab lights	✓		Service platform with anti-skid plate and recessed bolts	✓	
Premium surround lighting package		✓	RH handrail and hand hold	✓	
			Cab mirror for RH track edge	✓	
			Signaling/warning horn	✓	
			Swing alarm		✓
			Ground-level secondary engine shutoff switch in cab	✓	
			Hydraulic lock out lever that neutralizes all controls	✓	
			Inspection lighting		✓

Dealer Installed Kits and Attachments

Attachments may vary. Consult your Cat dealer for details.

CAB

- Right Hand/Left Hand (RH/LH) electrical pedal (two-way) for tool control
- Radial lower wiper for two piece (70/30) windshield, with washer
- Rain protector plus cab light cover
- Polycarbonate roof hatch
- 75 mm (3") retractable seat belt

SAFETY AND SECURITY

- Cat Detect – People Detection
- Cat Command – Remote control kit
- Seat belt indicator
- Bluetooth® receiver
- Bluetooth key fob

GUARDS

- Side rubber bumper guard
- Operator Protective Guards (not compatible with cab light cover, rain protector)
- Mesh guard full front (not compatible with cab light cover, rain protector)
- Mesh guard lower half front

ELECTRICAL

- Jump start wiring

SERVICE AND MAINTENANCE

- Grease gun holder

## Cab Options

	Deluxe	Premium
ROPS	●	●
OPG	○	○
High-resolution 254 mm (10") LCD touchscreen monitor	●	●
Auto bi-level air conditioner	●	●
Jog dial and shortcut keys for monitor control	●	●
Keyless push-to-start engine control	●	●
Height-adjustable console	●	●
Tilt-up left-side console	●	●
Heated air-suspension seat	●	X
Heated and ventilated air-suspension seat	X	●
51 mm (2") seat belt	●	●
Monitor integrated Bluetooth radio with USB/Auxiliary ports	●	●
12V DC outlets	●	●
Document storage	●	●
Overhead storage and rear storage with nets	●	●
Beverage holder	●	●
Cup holder	●	●
Openable two-piece front window	●	●
Rear window emergency exit	●	●
Radial wiper with washer	●	X
Parallel wiper	X	●
Openable polycarbonate skylight hatch	●	●
Laminated roof glass	X	X
LED dome light	●	●
Floor welcome light	●	●
Roof sunscreen	●	●
Roller front sunscreen	●	●
Roller rear sunscreen	○	●
Washable floor mat	●	●
Beacon ready	●	●
Cat Stick Steer	○	○
Auxiliary relay	○	○

● Standard

○ Optional

X Not Available

# 330 Environmental Declaration

The following information applies to the machine at the time of final manufacture as configured for sale in the regions covered in this document. The content of this declaration is valid as of the date issued; however, content related to machine features and specifications are subject to change without notice. For additional information, please see the machine's Operation and Maintenance Manual.

For more information on sustainability in action and our progress, please visit <https://www.caterpillar.com/en/company/sustainability>.

## Engine

- The Cat® C7.1 engine meets U.S. EPA Tier 4 Final, EU Stage V, Korea Stage V, and Japan 2014 emission standards.
- Cat diesel engines are required to use ULSD (ultra-low sulfur diesel fuel with 15 ppm of sulfur or less) and are compatible\* with ULSD blended with the following lower-carbon intensity fuels\*\* up to:
  - ✓ 20% biodiesel FAME (fatty acid methyl ester)\*\*\*
  - ✓ 100% renewable diesel, HVO (hydrogenated vegetable oil) and GTL (gas-to-liquid) fuels

Refer to guidelines for successful application. Please consult your Cat dealer or "Caterpillar Machine Fluids Recommendations" (SEBU6250) for details.

\* While Cat engines are compatible with these alternative fuels, some regions may not allow their use.

\*\* Tailpipe greenhouse gas emissions from lower-carbon intensity fuels are essentially the same as traditional fuels.

\*\*\* Engines with no aftertreatment devices are compatible with higher blends, up to 100% biodiesel (for use of blends higher than 20% biodiesel, consult your Cat dealer) fuels.

## Air Conditioning System

- The air conditioning system on this machine contains the fluorinated greenhouse gas refrigerant R134a or R1234yf. See the label or instruction manual for identification of the gas.
  - If equipped with R134a (Global Warming Potential = 1430), the system contains 0.85 kg (1.9 lb) of refrigerant which has a CO<sub>2</sub> equivalent of 1.216 metric tonnes (1.340 tons).
  - If equipped with R1234yf (Global Warming Potential = 0.501), the system contains 0.78 kg (1.7 lb) of refrigerant which has a CO<sub>2</sub> equivalent of 0.001 metric tonnes (0.001 tons).

## Paint

- Based on best available knowledge, the maximum allowable concentration, measured in parts per million (PPM), of the following heavy metals in paint are:
  - Barium < 0.01%
  - Cadmium < 0.01%
  - Chromium < 0.01%
  - Lead < 0.01%

## Sound Performance

ISO 6395:2008 (external) – 103 dB(A)

ISO 6396:2008 (inside cab) – 70 dB(A)

- External Sound – The spectator sound power level is measured according to the test procedures and conditions specified in ISO 6395:2008 for a Cat machine that is properly equipped and maintained. The measurements were conducted at 70% of the maximum engine cooling fan speed.
- Internal Sound – The operator sound pressure level is measured according to the test procedures and conditions specified in ISO 6396:2008 for a cab offered by Caterpillar, when properly installed and maintained and tested with the door and windows closed. The measurements were conducted at 70% of the maximum engine cooling fan speed.
- Hearing protection may be needed when operating with an open operator station and cab (when not properly maintained for doors/windows open) for extended periods or in noisy environment(s).

## Oils and Fluids

- Caterpillar factory fills with ethylene glycol coolants. Cat Diesel Engine Antifreeze/Coolant (DEAC) and Cat Extended Life Coolant (ELC) can be recycled. Consult your Cat dealer for more information.
- Cat Bio HYDO™ Advanced is an EU Ecolabel approved biodegradable hydraulic oil.
- Additional fluids are likely to be present, please consult the Operations and Maintenance Manual or the Application and Installation guide for complete fluid recommendations and maintenance intervals.

## Features and Technology

- The following features and technology may contribute to fuel savings and/or carbon reduction. Features may vary. Consult your Cat dealer for details.
  - Advanced hydraulic systems balance power and efficiency
  - Smart mode matches machine power to digging requirements automatically
  - Eco mode supports reduced fuel consumption for light applications
  - Utilizing Cat technologies can help increase operating efficiencies
  - Extended service intervals help decrease maintenance costs
  - Programmable high-efficiency cooling fans run only when needed
  - The latest hydraulic oil filter provides longer life with a 3,000-hour replacement interval

## Recycling

- The materials included in machines are categorized as below with approximate weight percentage. Because of variations of product configurations, the following values in the table may vary.

Material Type	Weight Percentage
Steel	86.85%
Iron	4.63%
Nonferrous Metal	1.55%
Mixed Metal	0.07%
Mixed-Metal and Nonmetal	0.63%
Plastic	1.79%
Rubber	0.16%
Mixed Nonmetallic	0.23%
Fluid	3.12%
Other	0.96%
Uncategorized	0.00%
Total	100%

- A machine with higher recyclability rate will ensure more efficient usage of valuable natural resources and enhance End-of-Life value of the product. According to ISO 16714:2008 (Earthmoving machinery – Recyclability and recoverability – Terminology and calculation method), recyclability rate is defined as percentage by mass (mass fraction in percent) of the new machine potentially able to be recycled, reused or both.

All parts in the bill of material are first evaluated by component type based on a list of components defined by the ISO 16714:2008 and Japan CEMA (Construction Equipment Manufacturers Association) standards. Remaining parts are further evaluated for recyclability based on material type.

Because of variations of product configurations, the following value in the table may vary.

Recyclability – 97%



オフロード法2014年  
基準適合



国土交通省  
超低騒音型建設機械

For more complete information on Cat products, dealer services, and industry solutions, visit us on the web at [www.cat.com](http://www.cat.com)

© 2025 Caterpillar  
All rights reserved

Materials and specifications are subject to change without notice. Featured machines in photos may include additional equipment. See your Cat dealer for available options.

CAT, CATERPILLAR, LET'S DO THE WORK, VisionLink, their respective logos, "Caterpillar Corporate Yellow," the "Power Edge" and Cat "Modern Hex" trade dress as well as corporate and product identity used herein, are trademarks of Caterpillar and may not be used without permission.

Based on the Labor, Safety and Health Laws in Japan, employer of small construction equipment are required to provide specific training for all operators on machines with ship weight less than 3 metric ton. For machines greater than 3 metric ton, operator needs to obtain operator license certification from a Government approved registered training school.

AEXQ4011-01 (12-2025)  
Replaces: AEXQ4011-00  
Build Number: 07H  
(Japan)

