



# 320

## Hydraulic Excavator

# Technical Specifications

Configurations and features may vary by region. Please consult your Cat® dealer for availability in your area.

### Table of Contents

<b>Specifications</b> .....	<b>2</b>
Engine .....	2
Swing Mechanism .....	2
Weights .....	2
Track .....	2
Drive .....	2
Hydraulic System .....	2
Service Refill Capacities .....	2
Standards .....	2
Sound Performance .....	2
Operating Weight and Ground Pressure .....	3
Major Component Weights .....	3
Dimensions .....	4
Working Ranges .....	5
Bucket Specifications and Compatibility .....	7
Attachments Offering Guide .....	8
<b>Standard and Optional Equipment</b> .....	<b>9</b>
<b>Dealer Installed Kit and Attachments</b> .....	<b>11</b>
<b>Cab Options</b> .....	<b>12</b>
<b>320 Environmental Declaration</b> .....	<b>13</b>

# 320 Hydraulic Excavator Specifications

## Engine

Engine Model	Cat® C7.1	
Net Power		
ISO 9249	117 kW	157 hp
ISO 9249 (DIN)	159 hp (metric)	
Engine Power		
ISO 14396	118 kW	158 hp
ISO 14396 (DIN)	160 hp (metric)	
Bore	105 mm	4 in
Stroke	135 mm	5 in
Displacement	7.01 L	428 in <sup>3</sup>
Biodiesel capability	Up to B20 <sup>(1)</sup>	

- Meets Brazil MAR-1 emission standards, equivalent to U.S. EPA Tier 3 and EU Stage IIIA.
- Recommended for use up to 4500 m (14,764 ft) altitude with engine power derate above 3000 m (9,842.5 ft).
- Advertised power is tested per the specified standard in effect at the time of manufacture.
- Net power advertised is the power available at the flywheel when the engine is equipped with fan, air intake system, exhaust system and alternator.
- Engine speed at 1,800 rpm.

<sup>(1)</sup>Cat engines are compatible with diesel fuel blended with the following lower-carbon intensity fuels\*\* up to:

- ✓ 100% biodiesel FAME (fatty acid methyl ester)\*
- ✓ 100% renewable diesel, HVO (hydrogenated vegetable oil) and GTL (gas-to-liquid) fuels

Refer to guidelines for successful application. Please consult your Cat dealer or “Caterpillar Machine Fluids Recommendations” (SEBU6250) for details.

\*For use of blends higher than 20% biodiesel, consult your Cat dealer.

\*\*Tailpipe greenhouse gas emissions from lower-carbon intensity fuels are essentially the same as traditional fuels.

## Swing Mechanism

Swing Speed*	11.25 rpm	
Maximum Swing Torque	82 kN·m	60,300 lbf·ft

\*For CE-marked machine default value may be set lower.

## Weights

Operating Weight	21 300 kg	47,000 lb
------------------	-----------	-----------

- Heavy Duty (HD) Reach boom, HD R2.9 (9'6") stick, HD 1.19 m<sup>3</sup> (1.56 yd<sup>3</sup>) bucket, 600 mm (24") triple grouser shoes, and 3.7 mt (8,200 lb) counterweight.

## Track

Standard Track Shoe Width	600 mm	24 in
Number of Shoes (each side)	49	
Number of Track Rollers (each side)	8	
Number of Carrier Rollers (each side)	2	

## Drive

Gradeability	35°/70%	
Maximum Travel Speed	5.7 km/h	3.5 mph
Maximum Drawbar Pull	205 kN	45,996 lbf

## Hydraulic System

Main System – Maximum Flow – Implement	429 L/min (215 × 2 pumps)	113 gal/min (57 × 2 pumps)
Maximum Pressure – Equipment – Normal	35 000 kPa	5,075 psi
Maximum Pressure – Equipment – Heavy Lift Mode/Auto Dig Boost	38 000 kPa	5,510 psi
Maximum Pressure – Travel	34 300 kPa	4,974 psi
Maximum Pressure – Swing	27 500 kPa	3,998 psi
Boom Cylinder – Bore	120 mm	5 in
Boom Cylinder – Stroke	1260 mm	50 in
Stick Cylinder – Bore	140 mm	6 in
Stick Cylinder – Stroke	1504 mm	59 in
Bucket Cylinder – Bore	120 mm	5 in
Bucket Cylinder – Stroke	1104 mm	43 in

## Service Refill Capacities

Fuel Tank Capacity	345 L	86.6 gal
Cooling System	25 L	6.6 gal
Engine Oil	25 L	6.6 gal
Swing Drive	6 L	1.6 gal
Final Drive (each)	5 L	1.3 gal
Hydraulic System (including tank)	234 L	61.8 gal
Hydraulic Tank	115 L	30.4 gal

## Standards

Brakes	ISO 10265:2008
Cab/Rollover Protective Structure (ROPS)	ISO 12117-2:2008
Cab/Operator Protective Guards (OPG) (optional)	ISO 10262:1998 Level II

## Sound Performance

ISO 6395:2008 (external)	100 dB(A)
ISO 6396:2008 (inside cab)	70 dB(A)

- Hearing protection may be needed when operating with an open operator station and cab (when not properly maintained or doors/windows open) for extended periods or in a noisy environment.

# 320 Hydraulic Excavator Specifications

## Operating Weight and Ground Pressure

Base Machine Configurations	600 mm (24") Triple Grouser Shoes			
	Weight		Ground Pressure	
<b>Base Frame with Track Rollers and Carrier Rollers</b>				
<b>3.7 mt (8,200 lb) Counterweight + Long Undercarriage Base Machine</b>				
HD Reach Boom + HD R2.9 (9'6") Stick + 1.19 m <sup>3</sup> (1.56 yd <sup>3</sup> ) HD Bucket	21 300 kg	47,000 lb	44.3 kPa	6.4 psi

All operating weights include a 90% fuel tank with 75 kg (165 lb) operator.

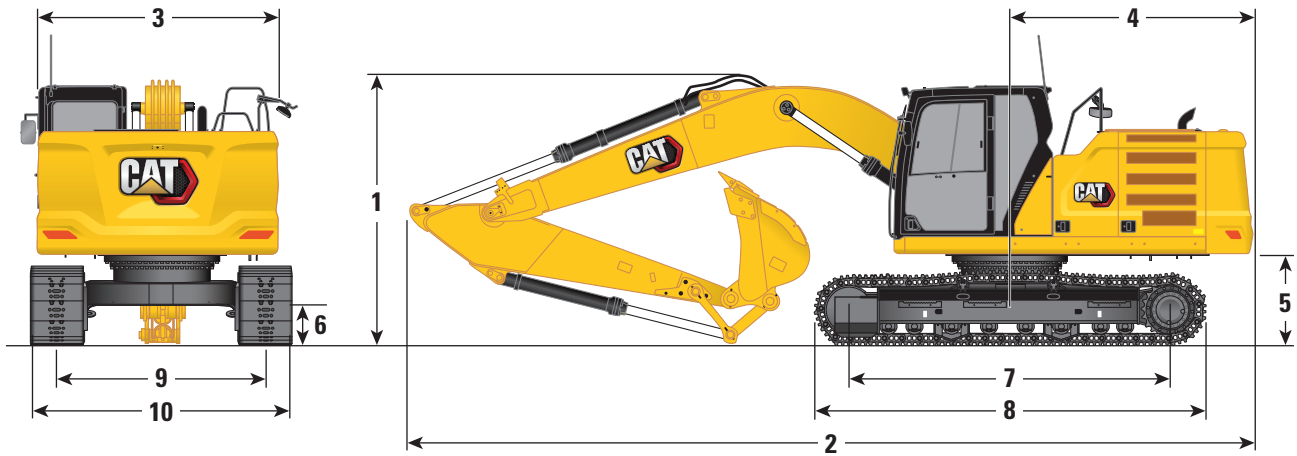
## Major Component Weights

	kg	lb
Base Machine (with 3.7 mt [8,200 lb] counterweight, standard swing frame, standard base frame with HD track rollers and standard carrier rollers for long undercarriage, without boom cylinders – does not include 90% fuel and 75 kg [165 lb] operator)	14 010	30,900
Base Machine (with 4.2 mt [9,300 lb] counterweight, semi-HD swing frame, HD base frame with SD track rollers and standard carrier rollers for long undercarriage, without boom cylinders – does not include 90% fuel and 75 kg [165 lb] operator)	14 560	32,100
Base machine (with 4.7 mt [10,440 lb] counterweight, semi-HD swing frame, standard base frame with HD track rollers and standard carrier rollers for long undercarriage, without boom cylinders – does not include 90% fuel and 75 kg [165 lb] operator)	15 040	33,100
Track Shoes:		
600 mm (24") Width, 10 mm (0.39") Thick Triple Grouser Track Shoes	2690	5,900
Two Boom Cylinders	340	750
Weight of 90% Fuel Tank and 75 kg (165 lb) Operator	310	680
Counterweights:		
3.7 mt (8,200 lb) Counterweight	3700	8,200
4.2 mt (9,300 lb) Counterweight	4200	9,300
4.7 mt (10,400 lb) Counterweight (Super Long Reach [SLR] only)	4700	10,400
Swing Frames:		
Standard Swing Frame	1890	4,170
Semi-HD Swing Frame (Super Long Reach only)	1910	4,210
Undercarriages:		
Standard Base Frame with HD Track Rollers and Standard Carrier Rollers	4390	9,680
HD Base Frame with SD Track Rollers and Standard Carrier Rollers	4410	9,720
Booms (including lines, pins, stick cylinder):		
HD Reach Boom 5.7 m (18'8")	1900	4,200
Super Long Reach Boom 8.85 m (29'0")	2170	4,800
Sticks (including lines, pins, bucket cylinder, bucket linkage):		
HD Reach Stick R2.9B1 (9'6")	1100	2,400
Super Long Reach Stick 6.28A (20'7")	1340	3,000
Buckets (without linkage):		
1.0 m <sup>3</sup> (1.31 yd <sup>3</sup> ) HD	890	2,000
1.0 m <sup>3</sup> (1.31 yd <sup>3</sup> ) Severe Duty (SD)	970	2,100
1.14 m <sup>3</sup> (1.14 yd <sup>3</sup> ) General Duty (GD)	820	1,800
1.19 m <sup>3</sup> (1.56 yd <sup>3</sup> ) HD	940	2,100
0.53 m <sup>3</sup> (0.69 yd <sup>3</sup> ) GD	410	900
0.57 m <sup>3</sup> (0.74 yd <sup>3</sup> ) Ditch Cleaning (DC)	390	900

# 320 Hydraulic Excavator Specifications

## Dimensions

All dimensions are approximate and may vary depending on bucket selection.



### Boom Options

**HD Reach Boom**  
5.7 m (18'8")

**SLR Boom**  
8.85 m (29'0")

### Stick Options

**HD Reach Sticks**  
R2.9B1 (9'6")

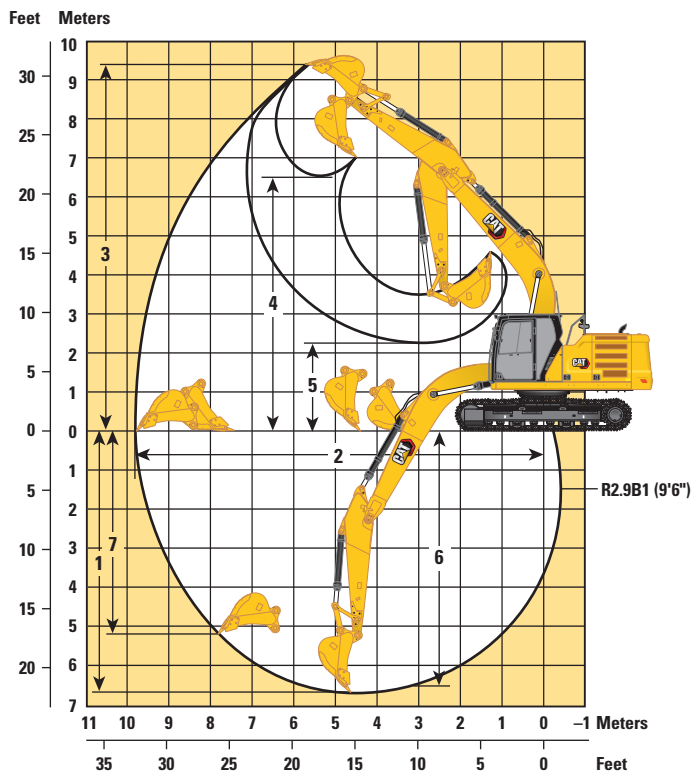
**SLR Stick**  
6.28A (20'7")

	HD Reach Boom 5.7 m (18'8")	SLR Boom 8.85 m (29'0")
<b>1 Machine Height:</b>		
Top of Cab Height	2960 mm 9'9"	2960 mm 9'9"
Top of GNSS Antenna Height (if installed)	3000 mm 9'10"	3000 mm 9'10"
Top of OPG Height	3100 mm 10'2"	3100 mm 10'2"
Handrail Height	2950 mm 9'8"	2950 mm 9'8"
With Boom/Stick/Bucket Installed	3160 mm 10'4"	3190 mm 10'6"
With Boom/Stick Installed	2910 mm 9'7"	3070 mm 10'1"
With Boom Installed	2480 mm 8'2"	2650 mm 8'8"
<b>2 Machine Length:</b>		
With Boom/Stick/Bucket Installed	9530 mm 31'3"	12 750 mm 41'10"
With Boom/Stick Installed	9500 mm 31'2"	12 760 mm 41'10"
With Boom Installed	8450 mm 27'9"	8920 mm 29'3"
<b>3 Upperframe Width</b>	2780 mm 9'1"	2780 mm 9'1"
<b>4 Tail Swing Radius</b>	2830 mm 9'3"	2830 mm 9'3"
<b>5 Counterweight Clearance</b>	1050 mm 3'5"	1050 mm 3'5"
<b>6 Ground Clearance</b>	470 mm 1'7"	470 mm 1'7"
<b>7 Length to Center of Rollers</b>	3650 mm 12'0"	3650 mm 12'0"
<b>8 Track Length</b>	4450 mm 14'7"	4450 mm 14'7"
<b>9 Track Gauge</b>	2380 mm 7'9"	2380 mm 7'9"
<b>10 Undercarriage Width:</b>		
600 mm (24") Shoes	2980 mm 9'9"	2980 mm 9'9"
<b>Bucket Type</b>	<b>HD</b>	<b>GD</b>
Bucket Capacity	1.19 m <sup>3</sup> 1.56 yd <sup>3</sup>	0.53 m <sup>3</sup> 0.69 yd <sup>3</sup>
Bucket Tip Radius	1570 mm 5'2"	1220 mm 4'0"

# 320 Hydraulic Excavator Specifications

## Working Ranges

All dimensions are approximate and may vary depending on bucket selection.



### Boom Option

**HD Reach Boom  
5.7 m (18'8")**

### Stick Options

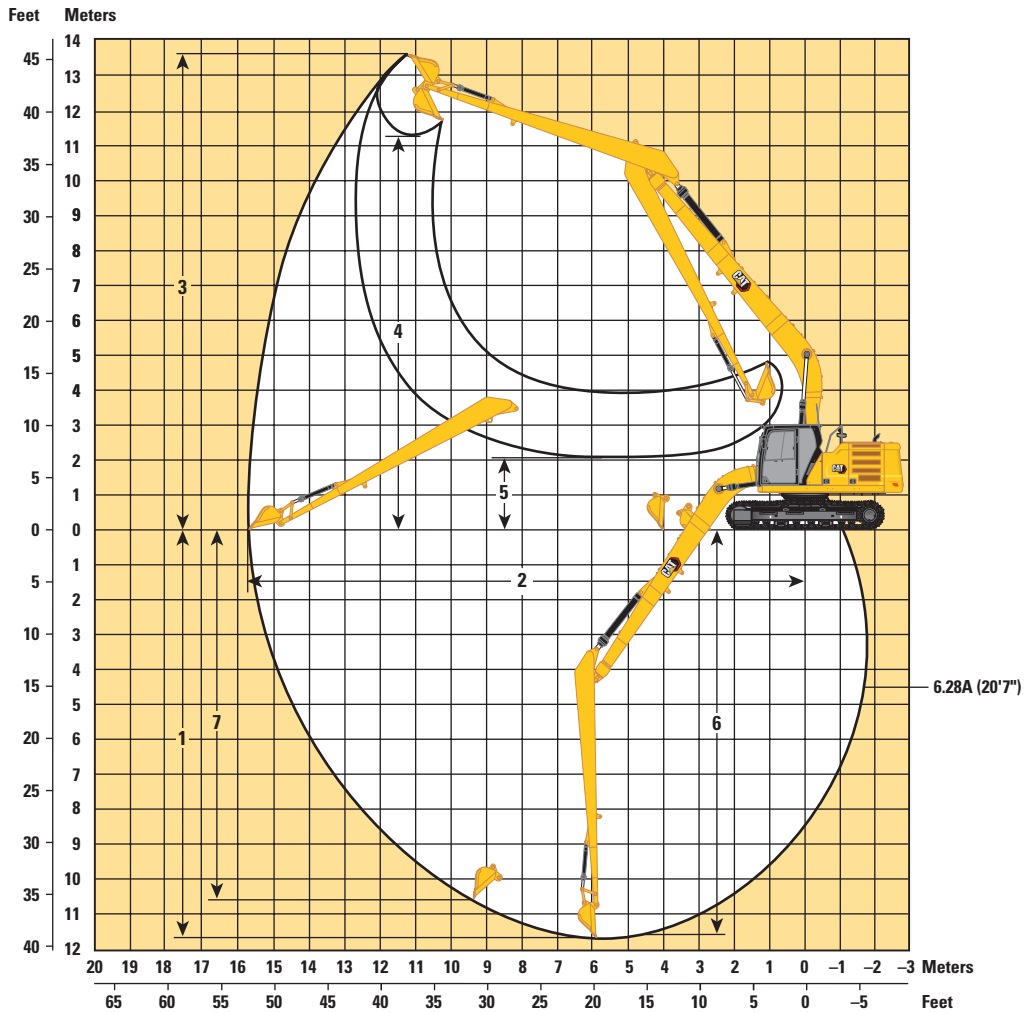
**HD Reach Sticks  
R2.9B1 (9'6")**

<b>1</b> Maximum Digging Depth	6720 mm	22'1"
<b>2</b> Maximum Reach at Ground Line	9860 mm	32'4"
<b>3</b> Maximum Cutting Height	9370 mm	30'9"
<b>4</b> Maximum Loading Height	6490 mm	21'4"
<b>5</b> Minimum Loading Height	2170 mm	7'1"
<b>6</b> Maximum Depth Cut for 2440 mm (8'0") Level Bottom	6550 mm	21'6"
<b>7</b> Maximum Vertical Wall Digging Depth	5190 mm	17'0"
Bucket Digging Force (ISO)	150 kN	33,811 lbf
Stick Digging Force (ISO)	106 kN	23,911 lbf
Bucket Digging Force (ISO) – Auto Dig Boost	163 kN	36,709 lbf
Stick Digging Force (ISO) – Auto Dig Boost	115 kN	25,960 lbf
Bucket Type	HD	
Bucket Capacity	1.19 m <sup>3</sup>	1.56 yd <sup>3</sup>
Bucket Tip Radius	1570 mm	5'2"

# 320 Hydraulic Excavator Specifications

## Working Ranges

All dimensions are approximate and may vary depending on bucket selection.



### Boom Option

SLR Boom  
8.85 m (29'0")

### Stick Option

SLR Stick  
6.28A (20'7")

1 Maximum Digging Depth	11 690 mm	38'4"
2 Maximum Reach at Ground Line	15 730 mm	51'7"
3 Maximum Cutting Height	13 610 mm	44'8"
4 Maximum Loading Height	11 290 mm	37'0"
5 Minimum Loading Height	2080 mm	6'10"
6 Maximum Depth Cut for 2440 mm (8'0") Level Bottom	11 590 mm	38'0"
7 Maximum Vertical Wall Digging Depth	10 560 mm	34'8"
Bucket Digging Force (ISO)	60 kN	13,549 lbf
Stick Digging Force (ISO)	49 kN	10,935 lbf
Bucket Type	GD	
Bucket Capacity	0.53 m <sup>3</sup>	0.69 yd <sup>3</sup>
Bucket Tip Radius	1230 mm	40"

# 320 Hydraulic Excavator Specifications

## Bucket Specifications and Compatibility

	Linkage	Width		Capacity		Weight		Fill	Counterweight		
									3.7 mt (8,200 lb)	4.2 mt (9,300 lb)	4.7 mt (10,400 lb)
		mm	in	m <sup>3</sup>	yd <sup>3</sup>	kg	lb	%	HD Reach Boom		SLR Boom
									HD R2.9 (9'6)	HD R2.9 (9'6)	6.28A (20'7)
<b>Pin-On (No Quick Coupler)</b>											
Utility Duty	B	1150	46	0.90	1.18	725	1,599	100	●	●	
	B	1250	50	1.00	1.31	758	1,672	100	⊙	●	
General Duty Excavation	B	1150	46	0.90	1.18	758	1,671	100	●	●	
	B	1250	50	1.00	1.31	792	1,747	100	⊙	●	
	B	1400	56	1.14	1.49	858	1,891	100	⊖	⊙	
Heavy Duty	B	1050	43	1.00	1.31	884	1,948	100	⊙	●	
	B	1200	49	1.19	1.56	955	2,105	100	⊖	⊖	
	B	1350	54	1.38	1.81	1018	2,244	100	○	○	
Severe Duty	B	1100	43	1.00	1.31	965	2,128	90	⊙	●	
	B	1250	49	1.19	1.56	1063	2,343	90	⊖	⊙	
General Duty	312, A	900	36	0.53	0.69	403	888	100			◇
Ditch Cleaning	312, A	1200	48	0.57	0.74	386	851	100			◇
Maximum load with pin-on (payload + bucket)								kg	2751	2973	880
								lb	6,064	6,553	1,940
<b>With Cat Pin Grabber Coupler</b>											
Utility Duty	B	1150	46	0.90	1.18	725	1,599	100	⊙	●	
	B	1250	50	1.00	1.31	758	1,672	100	⊖	⊙	
General Duty Excavation	B	1150	46	0.90	1.18	758	1,671	100	⊙	⊙	
	B	1250	50	1.00	1.31	792	1,747	100	⊖	⊙	
	B	1400	56	1.14	1.49	858	1,891	100	○	⊖	
Heavy Duty	B	1050	43	1.00	1.31	884	1,948	100	⊖	⊖	
	B	1200	49	1.19	1.56	955	2,105	100	○	○	
	B	1350	54	1.38	1.81	1018	2,244	100	◇	◇	
Severe Duty	B	1100	43	1.00	1.31	965	2,128	90	⊖	⊙	
	B	1250	49	1.19	1.56	1063	2,343	90	○	○	
Maximum load with coupler (payload + bucket)								kg	2329	2551	
								lb	5,134	5,624	

The above loads are in compliance with hydraulic excavator standard EN474 5:2006 + A3:2013, they do not exceed 87% of hydraulic lifting capacity or 75% of tipping capacity with front linkage fully extended at ground line with bucket curled.

Capacity based on ISO 7451:2007.

Bucket weight with General Duty tips.

### Maximum Material Density:

- 2100 kg/m<sup>3</sup> (3,500 lb/yd<sup>3</sup>)
- ⊙ 1800 kg/m<sup>3</sup> (3,000 lb/yd<sup>3</sup>)
- ⊖ 1500 kg/m<sup>3</sup> (2,500 lb/yd<sup>3</sup>)
- 1200 kg/m<sup>3</sup> (2,000 lb/yd<sup>3</sup>)
- ◇ 900 kg/m<sup>3</sup> (1,500 lb/yd<sup>3</sup>)

Caterpillar recommends using appropriate work tools to maximize the value customers receive from our products. Use of work tools, including buckets, which are outside of Caterpillar's recommendations or specifications for weight, dimensions, flows, pressures, etc. may result in less-than-optimal performance, including but not limited to reductions in production, stability, reliability, and component durability. Improper use of a work tool resulting in sweeping, prying, twisting and/or catching of heavy loads will reduce the life of the boom and stick.

# 320 Hydraulic Excavator Specifications

## Attachments Offering Guide *(continued)*

Not all Attachments are available in all regions. Consult your Cat dealer for configurations available in your region.

Match

### PIN-ON ATTACHMENTS

Counterweight		3.7 mt (8,200 lb)	4.2 mt (9,300 lb)
Boom Type		HD Reach	HD Reach
Stick Length		HD R2.9 (9'6")	HD R2.9 (9'6")
Hydraulic Hammers	H115 GC	✓	✓
	H115 GC S	✓	✓
	H120 GC	✓	✓
	H120 GC Side Mount	✓	✓
	H120 GC S	✓	✓
	H130 GC	✓	✓
	H130 GC S	✓	✓
	Rotary Cutters	RC20	✓



## Standard and Optional Equipment

Standard and optional equipment may vary. Consult your Cat dealer for details.

	Standard	Optional		Standard	Optional
<b>ENGINE</b>			<b>UNDERCARRIAGE AND STRUCTURES</b>		
Cat® C7.1 single turbo diesel engine	✓		600 mm (24") triple grouser track shoes	✓	
Three selectable power modes	✓		Tie-down points on base frame	✓	
Automatic engine speed control	✓		Two-piece segmented track guiding guards	✓	
Automatic engine idle shutdown	✓		Bottom guards	✓	
4500 m (14,760 ft) altitude capability with derate from 3000 m (9,840 ft)	✓		HD bottom guards		✓
52° C (125° F) high-ambient cooling capacity	✓		Swivel guard		✓
Starting capability for -18° C (0° F) with jump start receptacle		✓	Travel motor guards	✓	
Starting capability for -32° C (-25° F)		✓	HD travel motor guards		✓
Double element air filter with integrated pre-cleaner	✓		Grease lubricated track links	✓	
Electric cooling fans with auto-reverse function	✓		3700 kg (8,200 lb) counterweight	✓	
<b>HYDRAULIC SYSTEM</b>			<b>BOOM, STICKS AND LINKAGES</b>		
Boom and stick regeneration circuits	✓		5.7 m (18'8") HD Reach boom	✓	
Electronic main control valve	✓		8.85 m (29'0") Super Long Reach boom		✓
Automatic warm up	✓		2.9 m (9'6") HD Reach stick	✓	
Auto Dig Boost	✓ <sup>1</sup>		6.28 m (20'7") Super Long Reach stick		✓
Automatic two-speed travel	✓		Bucket linkage, B1-family with lifting eye, Cat Grade		✓
Boom and stick drift reduction valve	✓		Bucket linkage, B1-family without lifting eye, Cat Grade		✓
Element type main hydraulic filter	✓		Bucket linkage, A-family with lifting eye, SLR		✓
Slider joysticks	✓		Bucket linkage, A-family without lifting eye, SLR		✓
Tandem type electronic main pump	✓				
Hammer return filter circuit		✓			
Hydraulic efficiency monitoring		✓			
Basic Tool Control (one pump, one way high-pressure flow)		✓			
Tool Control (two pumps, one/two way high-pressure flow)		✓			
Quick coupler circuit for Cat Pin Grabber		✓			

(continued on next page)

<sup>1</sup>Not available for Super Long Reach.

# 320 Standard and Optional Equipment

## Standard and Optional Equipment (continued)

Standard and optional equipment may vary. Consult your Cat dealer for details.

	Standard	Optional		Standard	Optional
<b>ELECTRICAL SYSTEM</b>			<b>SERVICE AND MAINTENANCE</b>		
1,000 CCA maintenance-free batteries (×2)	✓		Scheduled Oil Sampling (S-O-S <sup>SM</sup> ) ports	✓	
1,000 CCA maintenance-free batteries (×4)		✓	Grouped location for engine oil and fuel filters	✓	
Centralized electrical disconnect switch	✓		Ground-level second dipstick for engine oil	✓	
Programmable time-delay LED working lights	✓		Radiator screen		✓
LED chassis light, left-hand (LH) and right-hand (RH) boom lights, cab lights	✓		Integrated vehicle health management system	✓	
Premium surround lighting package		✓	<b>SAFETY AND SECURITY</b>		
<b>CAT TECHNOLOGY</b>			Cat Command (remote control)		✓
Cat Equipment Management:			2D E-Fence:	✓ <sup>6</sup>	
– VisionLink <sup>®</sup>	✓ <sup>2</sup>		– E-ceiling		
– VisionLink Productivity		✓ <sup>3</sup>	– E-floor		
– Remote Flash	✓		– E-swing		
– Remote Troubleshoot	✓		– E-wall		
– Work tool recognition and tracking (PL161)	✓ <sup>4</sup>		– E-cab avoidance		
– Operator Coaching		✓ <sup>5</sup>	Auto hammer stop	✓	
Cat Grade:			Rearview camera and right-side mirror	✓	
– Cat Grade with 2D	✓ <sup>6</sup>		Right-hand-sideview camera		✓
– Cat Grade with 2D with Attachment Ready Option (ARO)		✓	360° visibility		✓
– Laser catcher		✓	Neutral lever (lock out) for all controls	✓	
– Cat Grade with 3D (single or dual GNSS)		✓	Anti-skid plate and countersunk bolts on service platform	✓	
– Compatible with 3D grade systems from Trimble, Topcon, and Leica	✓		Ground-level accessible secondary engine shutoff switch in cab	✓	
– Cat Grade 3D Ready		✓	Lockable disconnect switch	✓	
Cat Assist: <sup>6</sup>			Swing alarm		✓
– Grade Assist	✓		RH handrail and hand hold	✓	
– Boom Assist	✓		Travel alarm	✓	
– Bucket Assist	✓		Inspection lighting		✓
– Swing Assist	✓				
– Lift Assist	✓				
Cat Payload: <sup>6</sup>					
– On-the-go weighing	✓				
– Semiautomatic calibration	✓				
– Payload/cycle information	✓				
– VisionLink Productivity back office reporting		✓ <sup>3</sup>			
Cat Advanced Payload:					
– Daily totals		✓			
– Custom lists		✓			
– Smart weight target		✓			
– E-ticket Integration		✓ <sup>3</sup>			
Other:					
Cat Tiltrotator (TRS) integration		✓			

<sup>2</sup>Provides core telematics data to manage health, maintenance insights, and condition monitoring. Other plans available for more comprehensive data reporting. Consult your Cat dealer for details.

<sup>3</sup>VisionLink subscription required. Consult your Cat dealer for details.

<sup>4</sup>Requires PL161 attachment locator on work tool and Bluetooth<sup>®</sup> receiver on machine.

<sup>5</sup>VisionLink subscription required for back office reporting. Consult your Cat dealer for details.

<sup>6</sup>Optional on machines equipped with a Super Long Reach boom and stick.

## Dealer Installed Kit and Attachments

Attachments may vary. Consult your Cat dealer for details.

### CAB

- Lower radial wiper
- Rain protector plus cab light cover
- Polycarbonate roof hatch (Comfort cab only)
- Sun visor, slider (Comfort cab only)
- Laminated P5A glass front windshield
- LH/RH electrical pedal for tool control
- Armrest kit
- Seat with 4-point seatbelt capability
- Dual exit rear window kit
- 75 mm (3") retractable seat belt
- Auxiliary relay

### ELECTRICAL

- Premium surround working lights

### GUARDS

- Swivel guard
- Side rubber bumper guard
- Operator Protective Guards
- Mesh guard full front
- Mesh guard half front
- Full protecting vandalism guard

### MAINTENANCE

- Jump start wiring
- Duct ready kit

### SAFETY AND SECURITY

- Cat Detect – People Detection
- Cat Command – Remote control kit
- Seat belt indicator
- Bluetooth® receiver
- Bluetooth key fob

### OTHER ATTACHMENTS

- Delayed engine shutdown kit
- Upper cover for antennae
- Removable mast for antennae
- Power clam kit
- Grease gun holder

# 320 Cab Options

## Cab Options

	Comfort	Deluxe
ROPS	●	●
OPG	○	○
High-resolution 203 mm (8") LCD touchscreen monitor	●	●
High-resolution 254 mm (10") LCD touchscreen monitor	○	○
Auto bi-level air conditioner	●	●
Jog dial and shortcut keys for monitor control	●	●
Keyless push-to-start engine control	●	●
Height-adjustable console, infinite with no tool	X	●
Height-adjustable console, three steps with tool	●	X
Tilt-up left-side console	X	●
Fixed left-side console	●	X
Mechanical-suspension seat	●	X
Heated air-suspension seat	X	●
51 mm (2") seat belt	●	●
Monitor integrated Bluetooth radio with USB/Aux ports	●	●
12V DC outlets	●	●
Document storage	●	●
Overhead storage and rear storage with nets	X	●
Beverage holder	●	●
Cup holder	●	●
Openable two-piece front window	●	●
Rear window emergency exit	●	●
Radial wiper with washer	●	●
Openable polycarbonate skylight hatch	X	●
Openable steel hatch	●	X
LED dome light	●	●
Roof sunscreen	X	●
Roller front sunscreen	●	●
Roller rear sunscreen	○	○
Washable floor mat	●	●
Beacon ready	●	●
Auxiliary relay	X	○

● Standard

○ Optional

X Not available

The following information applies to the machine at the time of final manufacture as configured for sale in the regions covered in this document. The content of this declaration is valid as of the date issued; however, content related to machine features and specifications are subject to change without notice. For additional information, please see the machine's Operation and Maintenance Manual.

For more information on sustainability in action and our progress, please visit <https://www.caterpillar.com/en/company/sustainability>.

## Engine

- The Cat® C7.1 engine meets Brazil MAR-1 emission standards, equivalent to U.S. EPA Tier 3 and EU Stage IIIA.
  - Cat engines are compatible with diesel fuel blended with the following lower-carbon intensity fuels\*\* up to:
    - ✓ 100% biodiesel FAME (fatty acid methyl ester)\*
    - ✓ 100% renewable diesel, HVO (hydrogenated vegetable oil) and GTL (gas-to-liquid) fuels
- Refer to guidelines for successful application. Please consult your Cat dealer or “Caterpillar Machine Fluids Recommendations” (SEBU6250) for details.
- \*For use of blends higher than 20% biodiesel, consult your Cat dealer.*
- \*\*Tailpipe greenhouse gas emissions from lower-carbon intensity fuels are essentially the same as traditional fuels.*

## Air Conditioning System

- The air conditioning system on this machine contains the fluorinated greenhouse gas refrigerant R134a (Global Warming Potential = 1430). The system contains 0.85 kg (1.9 lb) of refrigerant which has a CO<sub>2</sub> equivalent of 1.216 metric tonnes (1.340 tons).

## Paint

- Based on best available knowledge, the maximum allowable concentration, measured in parts per million (PPM), of the following heavy metals in paint are:
  - Barium < 0.01%
  - Cadmium < 0.01%
  - Chromium < 0.01%
  - Lead < 0.01%

## Sound Performance

ISO 6395:2008 (external) – 100 dB(A)

ISO 6396:2008 (inside cab) – 70 dB(A)

- Hearing protection may be needed when operating with an open operator station and cab (when not properly maintained or doors/windows open) for extended periods or in a noisy environment.

## Oils and Fluids

- Caterpillar factory fills with ethylene glycol coolants. Cat Diesel Engine Antifreeze/Coolant (DEAC) and Cat Extended Life Coolant (ELC) can be recycled. Consult your Cat dealer for more information.
- Cat Bio HYDO™ Advanced is an EU Ecolabel approved biodegradable hydraulic oil.
- Additional fluids are likely to be present, please consult the Operations and Maintenance Manual or the Application and Installation guide for complete fluid recommendations and maintenance intervals.

## Features and Technology

- The following features and technology may contribute to fuel savings and/or carbon reduction. Features may vary. Consult your Cat dealer for details.
  - Advanced hydraulic systems balance power and efficiency
  - Smart mode matches machine power to digging requirements automatically
  - Utilizing Cat technologies can help increase operating efficiencies
  - Extended service intervals help decrease maintenance costs
  - The latest hydraulic oil filter provides longer life with a 3,000-hour replacement interval

For more complete information on Cat products, dealer services, and industry solutions, visit us on the web at [www.cat.com](http://www.cat.com)

© 2024 Caterpillar  
All rights reserved

Materials and specifications are subject to change without notice. Featured machines in photos may include additional equipment. See your Cat dealer for available options.

CAT, CATERPILLAR, LET'S DO THE WORK, their respective logos, "Caterpillar Corporate Yellow," the "Power Edge" and Cat "Modern Hex" trade dress as well as corporate and product identity used herein, are trademarks of Caterpillar and may not be used without permission. VisionLink is a trademark of Caterpillar Inc., registered in the United States and in other countries.

AEXQ3764-00 (09-2024)  
Build Number: 07H  
(Hong Kong, Taiwan)

