



# 323 GX

## Hydraulic Excavator

# Technical Specifications

Configurations and features may vary by region. Please consult your Cat® dealer for availability in your area.

## Table of Contents

<b>Specifications</b> .....	<b>2</b>
Engine .....	2
Swing Mechanism .....	2
Weights .....	2
Track .....	2
Drive .....	2
Hydraulic System .....	2
Service Refill Capacities .....	2
Standards .....	2
Sound Performance .....	3
Air Conditioning System .....	3
Operating Weights and Ground Pressures .....	3
Major Component Weights .....	4
Dimensions .....	5
Working Ranges .....	6
Reach Boom Lift Capacities – Counterweight: 4250 kg (9,370 lb) .....	7
Bucket Specifications and Compatibility .....	9
Attachments Offering Guide .....	9
<b>Standard and Optional Equipment</b> .....	<b>10</b>
<b>Dealer Installed Kits and Attachments</b> .....	<b>11</b>
<b>323 GX Environmental Declaration</b> .....	<b>12</b>

# 323 GX Hydraulic Excavator Specifications

## Engine

Engine Model	Cat® C4.4	
Net Power		
ISO 9249	123.7 kW	166 hp
ISO 9249 (DIN)	168 hp (metric)	
Engine Power		
ISO 14396	129.4 kW	174 hp
ISO 14396 (DIN)	176 hp (metric)	
Bore	105 mm	4 in
Stroke	127 mm	5 in
Displacement	4.4 L	269 in <sup>3</sup>
Biodiesel Capability	Up to B20 <sup>(1)</sup>	

- Meets U.S. EPA Tier 4 Final and EU Stage V emission standards.
- Recommended for use up to 4500 m (14,764 ft) altitude with engine power derate above 3000 m (9,842 ft).
- Advertised power is tested per the specified standard in effect at the time of manufacture.
- Net power advertised is the power available at the flywheel when the engine is equipped with fan, air intake system, exhaust system and alternator.
- Engine speed at 2,200 rpm.

<sup>(1)</sup>Cat diesel engines are required to use ULSD (ultra-low sulfur diesel fuel with 15 ppm of sulfur or less) or ULSD blended with the following lower-carbon intensity fuels\*\* up to:

- ✓ 20% biodiesel FAME (fatty acid methyl ester)\*
- ✓ 100% renewable diesel, HVO (hydrotreated vegetable oil) and GTL (gas-to-liquid) fuels

Refer to guidelines for successful application. Please consult your Cat dealer or “Caterpillar Machine Fluids Recommendations” (SEBU6250) for details.

*\*Engines with no aftertreatment devices can use higher blends, up to 100% biodiesel (for use of blends higher than 20% biodiesel, consult your Cat dealer).*

*\*\*Tailpipe greenhouse gas emissions from lower-carbon intensity fuels are essentially the same as traditional fuels.*

## Swing Mechanism

Swing Speed	11.2 rpm	
Maximum Swing Torque	82 kN·m	60,333 lbf·ft

## Weights

Operating Weight	21 700 kg	47,800 lb
------------------	-----------	-----------

- Reach boom, R2.9B1 (9'6") stick, General Duty (GD) 1.19 m<sup>3</sup> (1.56 yd<sup>3</sup>) bucket, 600 mm (24") triple grouser shoes and 4250 kg (9,370 lb) counterweight.

## Track

Optional Track Shoes Width	600 mm	24 in
Optional Track Shoes Width	790 mm	31 in
Number of Shoes (each side)	47	
Number of Track Rollers (each side)	7	
Number of Carrier Rollers (each side)	2	

## Drive

Gradeability	35° +/-70%	
Maximum Travel Speed	5.7 km/h	3.6 mph
Maximum Drawbar Pull	200 kN	44,917 lbf

## Hydraulic System

Main System – Maximum Flow – Implement	429 L/min (214.5 × 2 pumps)	113 gal/min (56.7 × 2 pumps)
Maximum Pressure – Equipment – Normal	35 000 kPa	5,075 psi
Maximum Pressure – Travel	35 000 kPa	5,075 psi
Maximum Pressure – Swing	27 500 kPa	3,988 psi
Boom Cylinder – Bore	120 mm	5 in
Boom Cylinder – Stroke	1260 mm	50 in
Stick Cylinder – Bore	140 mm	6 in
Stick Cylinder – Stroke	1504 mm	59 in
Bucket Cylinder – Bore	120 mm	5 in
Bucket Cylinder – Stroke	1104 mm	43 in

## Service Refill Capacities

Fuel Tank Capacity	390 L	103 gal
Cooling System	24.5 L	6.5 gal
Engine Oil	15 L	4 gal
Swing Drive	5.5 L	1.5 gal
Final Drive (each)	4.5 L	1.2 gal
Hydraulic System (including tank)	218 L	57.6 gal
Hydraulic Tank	115 L	30.4 gal
Diesel Exhaust Fluid (DEF) Tank	26 L	6.9 gal

## Standards

Brakes	ISO 10265:2008
Rollover Protective Structure (ROPS) (optional)	ISO 12117-2 2008
Cab/Operator Protective Guards (OPG) (optional)	ISO 10262:1998 Level II

# 323 GX Hydraulic Excavator Specifications

## Sound Performance

ISO 6395:2008 (external): 103 dB(A)

ISO 6396:2008 (inside cab): 70 dB(A)

- Hearing protection may be needed when operating with an open operator station and cab (when not properly maintained or doors/windows open) for extended periods or in a noisy environment.

## Air Conditioning System

The air conditioning system on this machine contains the fluorinated greenhouse gas refrigerant R134a (Global Warming Potential = 1430). The system contains 0.85 kg of refrigerant, which has a CO<sub>2</sub> equivalent of 1.216 metric tonnes.

## Operating Weights and Ground Pressures

Base Machine Configurations	600 mm (24 in) Triple Grouser Shoes		790 mm (31 in) Triple Grouser Shoes	
	Weight kg (lb)	Ground Pressure kPa (psi)	Weight kg (lb)	Ground Pressure kPa (psi)
<b>Base Frame with Track Rollers and Carrier Rollers</b>				
<b>4250 kg (9,370 lb) Counterweight + Medium Undercarriage Base Machine</b>				
Reach Boom + R2.9B1 (9'6") Stick + 1.19 m <sup>3</sup> (1.56 yd <sup>3</sup> ) GD Bucket	21 700 (47,800)	47.6 (6.9)	22 200 (48,900)	37.0 (5.4)

All operating weights include a 90% fuel tank with 75 kg (165 lb) operator.

# 323 GX Hydraulic Excavator Specifications

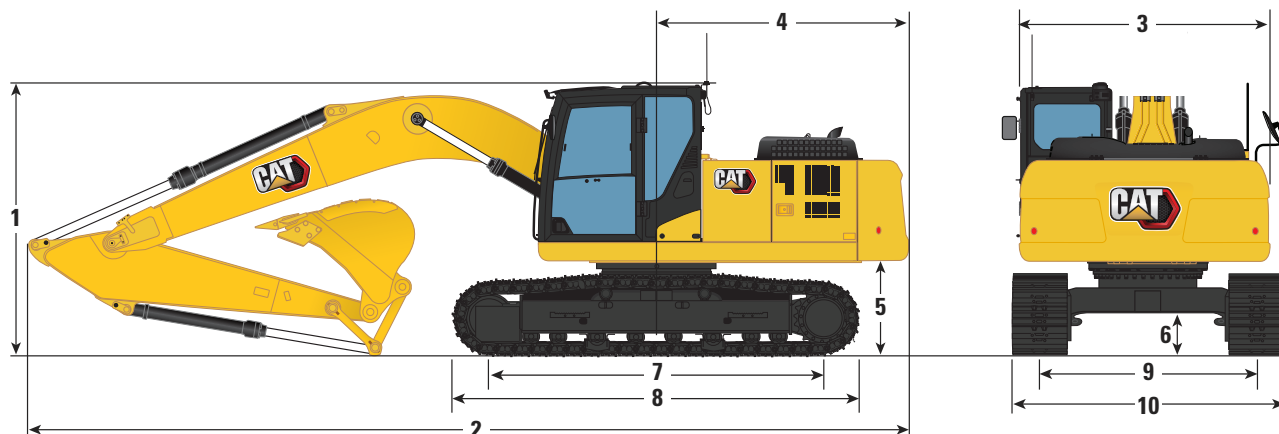
## Major Component Weights

	kg	lb
Base Machine (with 4250 kg [9,370 lb] counterweight, upper frame, Medium undercarriage with rollers and two boom cylinders – does not include boom, stick, bucket, stick cylinder, bucket cylinder, tracks, 90% fuel tank and 75 kg [165 lb] operator).	14 970	32,990
Track Shoes:		
600 mm (24") Width, 10 mm (0.39") Thick Triple Grouser Track Shoes	2700	5,960
790 mm (31") Width, 10 mm (0.39") Thick Triple Grouser Track Shoes with Step Extension	3210	7,070
Two Boom Cylinders	360	800
Weight of 90% Fuel Tank and 75 kg (165 lb) Operator	380	840
Counterweight:		
4250 kg (9,370 lb) Counterweight	4250	9,370
Booms (including lines, pins, stick cylinder):		
Reach Boom 5.7 m (18'8")	1690	3,720
HP Tool Control Lines for Reach Boom 5.7 m (18'8")	80	180
Sticks (including lines, pins, bucket cylinder, bucket linkage):		
Reach Stick R2.9B1 (9'6")	1070	2,350
HP Tool Control Lines for Reach Stick R2.9B1 (9'6")	50	110
Bucket (without linkage, with tips and side cutters):		
1.19 m <sup>3</sup> (1.56 yd <sup>3</sup> ) GD with Advansys™ Tips	890	1,970

# 323 GX Hydraulic Excavator Specifications

## Dimensions

All dimensions are approximate and may vary depending on bucket selection.



### Boom Option

Reach Boom  
5.7 m (18'8")

### Stick Option

Reach Stick  
R2.9B1 (9'6")

#### 1 Machine Height:

Top of Cab Height	2980 mm	9'10"
Top of OPG Height	3120 mm	10'3"
Handrail Height	3030 mm	9'11"
With Boom/Stick/Bucket Installed	3130 mm	10'3"
With Boom/Stick Installed	3060 mm	10'0"
With Boom Installed	2960 mm	9'9"

#### 2 Machine Length:

With Boom/Stick/Bucket Installed	9520 mm	31'3"
With Boom/Stick Installed	9510 mm	31'2"
With Boom Installed	8500 mm	27'11"

#### 3 Upperframe Width

2740 mm 9'0"

#### 4 Tail Swing Radius

2830 mm 9'3"

#### 5 Counterweight Clearance

1060 mm 3'6"

#### 6 Ground Clearance

460 mm 1'6"

#### 7 Track Length - Length to Center of Rollers

3450 mm 11'4"

#### 8 Track Length - Crawler Overall Length

4250 mm 13'11"

#### 9 Track Gauge

2380 mm 7'10"

#### 10 Undercarriage Width:

600 mm (24") Shoes	2980 mm	9'9"
790 mm (31") Shoes	3170 mm	10'5"

### Bucket Type

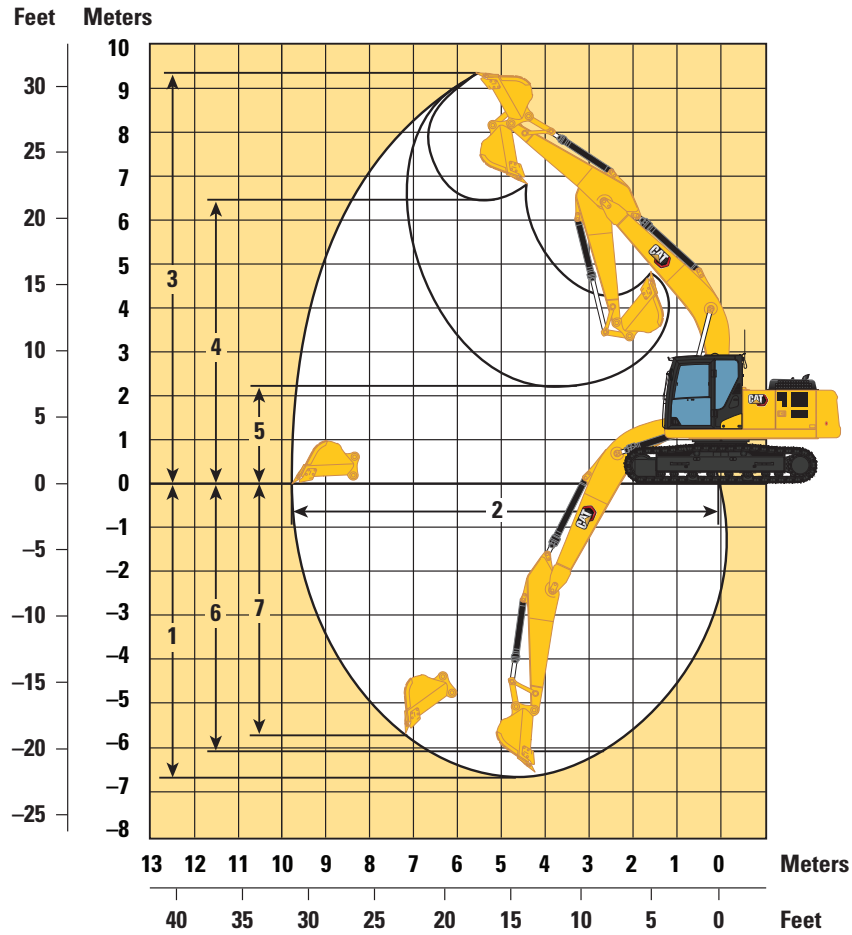
GD

Bucket Capacity	1.19 m <sup>3</sup>	1.56 yd <sup>3</sup>
Bucket Tip Radius	1572 mm	5'2"

# 323 GX Hydraulic Excavator Specifications

## Working Ranges

All dimensions are approximate and may vary depending on bucket selection.



### Boom Option

Reach Boom  
5.7 m (18'8")

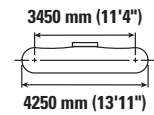
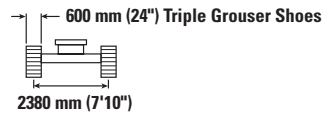
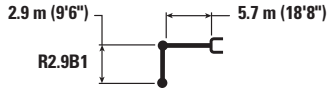
### Stick Option

Reach Stick  
R2.9B1 (9'6")

1 Maximum Digging Depth	6710 mm	22'0"
2 Maximum Reach at Ground Line	9860 mm	32'4"
3 Maximum Cutting Height	9460 mm	31'1"
4 Maximum Loading Height	6500 mm	21'4"
5 Minimum Loading Height	2180 mm	7'2"
6 Maximum Depth Cut for 2440 mm (8'0") Level Bottom	6490 mm	21'4"
7 Maximum Vertical Wall Digging Depth	5770 mm	18'11"
Minimum Working Equipment Radius	3650 mm	12'0"
Bucket Digging Force (ISO)	141 kN	31,698 lbf
Stick Digging Force (ISO)	107 kN	23,942 lbf
Bucket Type	GD	
Bucket Capacity	1.19 m <sup>3</sup>	1.56 yd <sup>3</sup>
Bucket Tip Radius	1572 mm	5'2"

# 323 GX Hydraulic Excavator Specifications

## Reach Boom Lift Capacities – Counterweight: 4250 kg (9,370 lb) – without Bucket



		1500 mm/5'0"		3000 mm/10'0"		4500 mm/15'0"		6000 mm/20'0"		7500 mm/25'0"		mm ft/in		
7500 mm 25'0"	kg lb							*4550	*4550			*3900 *8,650	*3900 8,650	6160 19'9"
6000 mm 20'0"	kg lb							*4900 *10,800	*4900 *10,800			*3600 *7,950	*3600 *7,950	7290 23'8"
4500 mm 15'0"	kg lb							*5400 *11,800	5300 11,400	*5100 *11,150	3750 8,000	*3550 *7,750	3350 7,450	7990 26'1"
3000 mm 10'0"	kg lb					*7950 *17,050	7700 16,600	*6250 *13,500	5050 10,900	*5250 *11,250	3650 7,850	*3600 *7,950	3100 6,800	8350 27'4"
1500 mm 5'0"	kg lb					*9600 *20,700	7200 15,550	*7050 *15,250	4850 10,400	5100 11,000	3550 7,600	*3850 *8,450	3000 6,550	8440 27'8"
0 mm 0'0"	kg lb			*6250 *14,300	*6250 *14,300	*10 500 *22,750	6950 14,950	6900 14,850	4650 10,050	5000 10,800	3450 7,400	*4250 *9,350	3050 6,650	8250 27'0"
-1500 mm -5'0"	kg lb	*6650 *14,900	*6650 *14,900	*10 800 *24,450	*10 800 *24,450	*10 600 *22,900	6850 14,750	6850 14,700	4600 9,900	5000 10,750	3400 7,350	*4750 *10,500	3250 7,200	7770 25'5"
-3000 mm -10'0"	kg lb	*11 450 *25,650	*11 450 *25,650	*14 050 *30,450	13 350 28,650	*9900 *21,450	6900 14,900	*6850 *14,750	4600 9,950			*5600 *12,450	3850 8,500	6940 22'7"
-4500 mm -15'0"	kg lb			*11 200 *23,950	*11 200 *23,950	*8050 *17,100	7100 15,350					*6100 *13,350	5300 11,900	5580 18'0"



ISO 10567:2007



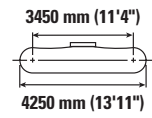
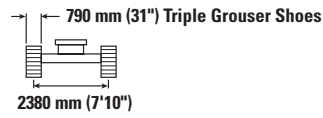
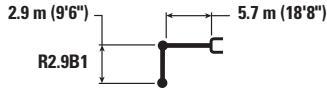
\* Indicates that the load is limited by hydraulic lifting capacity rather than tipping load. The above loads are in compliance with hydraulic excavator lift capacity standard ISO 10567:2007. They do not exceed 87% of hydraulic lifting capacity or 75% of tipping load. Weight of all lifting accessories must be deducted from the above lifting capacities. Lifting capacities are based on the machine standing on a firm, uniform supporting surface. The use of a work tool attachment point to handle/lift objects, could affect the machine lift performance.

Lift capacity stays with ±5% for all available track shoes.

Always refer to the appropriate Operation and Maintenance Manual for specific product information.

# 323 GX Hydraulic Excavator Specifications

## Reach Boom Lift Capacities – Counterweight: 4250 kg (9,370 lb) – without Bucket



Reach	Unit	1500 mm/5'0"		3000 mm/10'0"		4500 mm/15'0"		6000 mm/20'0"		7500 mm/25'0"		mm ft/in		
		kg lb	kg lb	kg lb	kg lb	kg lb	kg lb	kg lb	kg lb	kg lb	kg lb	kg lb	mm ft/in	
7500 mm 25'0"	kg lb							*4550 *4550				*3900 *8,650	*3900 *8,650	6160 19'9"
6000 mm 20'0"	kg lb							*4900 *10,800	*4900 *10,800			*3600 *7,950	*3600 *7,950	7290 23'8"
4500 mm 15'0"	kg lb							*5400 *11,800	5400 11,600	*5100 *11,150	3800 8,200	*3550 *7,750	3450 7,600	7990 26'1"
3000 mm 10'0"	kg lb					*7950 *17,050	7850 16,900	*6250 *13,500	5150 11,100	*5350 *11,500	3700 8,000	*3600 *7,950	3150 6,950	8350 27'4"
1500 mm 5'0"	kg lb					*9600 *20,700	7350 15,850	*7050 *15,300	4950 10,600	5200 11,200	3600 7,750	*3850 *8,450	3050 6,700	8440 27'8"
0 mm 0'0"	kg lb			*6250 *14,300	*6250 *14,300	*10500 *22,750	7100 15,250	7050 15,200	4750 10,250	5150 11,050	3550 7,600	*4250 *9,350	3100 6,800	8250 27'0"
-1500 mm -5'0"	kg lb	*6650 *14,900	*6650 *14,900	*10 800 *24,450	*10 800 *24,450	*10 600 *22,950	7000 15,100	7000 15,000	4700 10,100	5100 11,000	3500 7,550	*4850 *10,700	3350 7,350	7770 25'5"
-3000 mm -10'0"	kg lb	*11 450 *25,650	*11 450 *25,650	*14 050 *30,450	13 650 29,250	*9900 *21,450	7050 15,200	*7000 *15,100	4750 10,200			*5750 *12,700	3950 8,700	6940 22'7"
-4500 mm -15'0"	kg lb			*11 200 *23,950	*11 200 *23,950	*8050 *17,100	7250 15,700					*6100 *13,350	5400 12,150	5580 18'0"



ISO 10567:2007



\* Indicates that the load is limited by hydraulic lifting capacity rather than tipping load. The above loads are in compliance with hydraulic excavator lift capacity standard ISO 10567:2007. They do not exceed 87% of hydraulic lifting capacity or 75% of tipping load. Weight of all lifting accessories must be deducted from the above lifting capacities. Lifting capacities are based on the machine standing on a firm, uniform supporting surface. The use of a work tool attachment point to handle/lift objects, could affect the machine lift performance.

Lift capacity stays with ±5% for all available track shoes.

Always refer to the appropriate Operation and Maintenance Manual for specific product information.



# 323 GX Hydraulic Excavator Specifications

## Bucket Specifications and Compatibility

	Linkage	Counterweight						4250 kg (9,370 lb)	
		Width		Capacity		Weight		Reach Boom	
		mm	in	m <sup>3</sup>	yd <sup>3</sup>	kg	lb	%	
								R2.9 m (9'6")	
<b>Pin-On (No Quick Coupler)</b>									
General Duty	B	1200	48	1.19	1.56	890	1,962	100	⊙
Maximum load with pin-on (payload + bucket)								kg	3118
								lb	6,874

The above loads are in compliance with hydraulic excavator standard EN474-5:2006+A3:2013, they do not exceed 87% of hydraulic lifting capacity or 75% of tipping capacity with front linkage fully extended at ground line with bucket curled.

Capacity based on ISO 7451:2007.

Bucket weight with General Duty tips.

### Maximum Material Density:

⊙ 1800 kg/m<sup>3</sup> (3,000 lb/yd<sup>3</sup>)

Caterpillar recommends using appropriate work tools to maximize the value customers receive from our products. Use of work tools, including buckets, which are outside of Caterpillar's recommendations or specifications for weight, dimensions, flows, pressures, etc. may result in less-than-optimal performance, including but not limited to reductions in production, stability, reliability, and component durability. Improper use of a work tool resulting in sweeping, prying, twisting and/or catching of heavy loads will reduce the life of the boom and stick.

## Attachments Offering Guide

Not all Attachments are available in all regions. Consult your Cat dealer for configurations available in your region.

Match

† Allowed usage on machine less than 50%

### PIN-ON ATTACHMENTS

Counterweight	4250 kg (9,370 lb)	
Boom Type	Reach Boom	
Stick Length	R2.9 m (9'6")	
Hydraulic Hammers	H120 GC	✓
	H120 GC Side Mount	✓
	H120 GC S	✓
	H120 S	✓
	H130 S	✓†
Compactors (Vibratory Plate)	CVP110	✓

### CAT PIN GRABBER COUPLER ATTACHMENTS

Counterweight	4250 kg (9,370 lb)	
Boom Type	Reach Boom	
Stick Length	R2.9 m (9'6")	
Hydraulic Hammers	H120 GC Side Mount	✓†

# 323 GX Standard and Optional Equipment

## Standard and Optional Equipment

Standard and optional equipment may vary. Consult your Cat dealer for details.

	Standard	Optional		Standard	Optional
<b>BOOMS, STICKS AND LINKAGES</b>			<b>ENGINE</b>		
5.7 m (18'8") Reach boom	✓		Cat® C4.4 double turbo diesel engine	✓	
2.9 m (9'6") Reach stick	✓		Two selectable modes: Power, Smart	✓	
Bucket linkage with lifting eye, B1 type	✓		Up to 4500 m (14,764 ft) altitude capability with derate from 3000 m (9,842 ft)	✓	
<b>CAB</b>			52° C (125° F) high-ambient cooling capacity	✓	
OPG		✓	-25° C (-13° F) cold start capability	✓	
Sound suppressed cab with viscous mounts	✓		Electric fuel priming pump	✓	
High-resolution 203 mm (8") LCD touchscreen monitor	✓		Direct drive fan	✓	
Mechanical-suspension seat with head rest and arm rest	✓		Two-stage fuel filtration system with water separator and indicator	✓	
51 mm (2") orange seat belt	✓		Sealed double element air filter with pre-cleaner	✓	
Auto bi-level air conditioner	✓		<b>HYDRAULIC SYSTEM</b>		
Keyless push-to-start engine control	✓		Electronic main control valve, hammer ready	✓	
Fixed left-side console	✓		Back-to-back electronic pump	✓	
1-button joysticks	✓		Boom and stick regeneration circuits	✓	
3-button joysticks		✓	Automatic hydraulic oil warm up	✓	
AM/FM Bluetooth® radio with USB/Aux ports	✓		Automatic two-speed travel	✓	
Speakers (mounted on roof)	✓		Hammer lines		✓
24V DC outlet	✓		Hammer return filter		✓
Storage compartments	✓		High performance hydraulic return filter	✓	
Cup holder	✓		Auto hammer stop	✓	
70/30 tempered glass windshield	✓		<b>SAFETY AND SECURITY</b>		
Rear window emergency exit	✓		Anti-skid plating with countersunk bolts	✓	
Radial wiper with washer	✓		Handrail and handhold	✓	
Openable steel hatch	✓		Lockable external tool/storage box	✓	
LED dome light	✓		Ground-level secondary engine shutoff switch	✓	
Washable floor mat	✓		Lockable disconnect switch	✓	
<b>CAT TECHNOLOGY</b>			Signaling/warning horn	✓	
Cat Equipment Management:			Swing alarm		✓
VisionLink®	✓ <sup>1</sup>		Hydraulic lockout lever	✓	
VisionLink Productivity		✓ <sup>2</sup>	ROPS		✓
Capability to Remote Flash Cat Product Link™ (telematics only)	✓		Right-hand-side mirror	✓	
<b>ELECTRICAL SYSTEM</b>			Rearview camera		✓
Two 950 CCA maintenance-free batteries	✓		Travel alarm	✓	
Electrical disconnect switch	✓				
LED chassis and cab lights	✓				
LED right-side boom light		✓			
LED left-side boom light	✓				

(continued on next page)

<sup>1</sup>Provides core telematics data to manage health, maintenance insights, and condition monitoring. Other plans available for more comprehensive data reporting. Consult your Cat dealer for details.

<sup>2</sup>VisionLink subscription required. Consult your Cat dealer for details.

# 323 GX Standard and Optional Equipment

## Standard and Optional Equipment *(continued)*

Standard and optional equipment may vary. Consult your Cat dealer for details.

	Standard	Optional		Standard	Optional
<b>SERVICE AND MAINTENANCE</b>			<b>UNDERCARRIAGE AND STRUCTURES</b>		
Grouped engine oil and fuel filters	✓		600 mm (24") triple grouser track shoes		✓
Scheduled Oil Sampling (S·O·S <sup>SM</sup> ) ports	✓		790 mm (31") triple grouser track shoes		✓
Radiator screen		✓	Grease lubricated track link	✓	
			Center track guiding guard	✓	
			Bottom guards	✓	
			Travel motor guards	✓	
			4250 kg (9,370 lb) counterweight	✓	
			Tie-down points	✓	

## 323 GX Attachments

### Dealer Installed Kits and Attachments

Attachments may vary. Consult your Cat dealer for details.

#### GUARDS

- 6 mm (0.24") standard swivel guard
- Mesh guard full front (not compatible with cab light cover, rain protector)
- Mesh guard lower half front
- Operator Protective Guards

#### SERVICE PART

- Hammer floor pedal kit
- Grease gun holder

# 323 GX Environmental Declaration

The following information applies to the machine at the time of final manufacture as configured for sale in the regions covered in this document. The content of this declaration is valid as of the date issued; however, content related to machine features and specifications are subject to change without notice. For additional information, please see the machine's Operation and Maintenance Manual.

For more information on sustainability in action and our progress, please visit <https://www.caterpillar.com/en/company/sustainability>.

## Engine

- The Cat C4.4 engine meets U.S. EPA Tier 4 Final and EU Stage V emission standards.
- Cat diesel engines are required to use ULSD (ultra-low sulfur diesel fuel with 15 ppm of sulfur or less) or ULSD blended with the following lower-carbon intensity fuels\*\* up to:
  - ✓ 20% biodiesel FAME (fatty acid methyl ester)\*
  - ✓ 100% renewable diesel, HVO (hydrotreated vegetable oil) and GTL (gas-to-liquid) fuels

Refer to guidelines for successful application. Please consult your Cat dealer or "Caterpillar Machine Fluids Recommendations" (SEBU6250) for details.

*\*Engines with no aftertreatment devices can use higher blends, up to 100% biodiesel (for use of blends higher than 20% biodiesel, consult your Cat dealer).*

*\*\*Tailpipe greenhouse gas emissions from lower-carbon intensity fuels are essentially the same as traditional fuels.*

## Air Conditioning System

- The air conditioning system on this machine contains the fluorinated greenhouse gas refrigerant R134a (Global Warming Potential = 1430). The system contains 0.85 kg (1.9 lb) of refrigerant which has a CO<sub>2</sub> equivalent of 1.216 metric tonnes (1.340 tons).

## Paint

- Based on best available knowledge, the maximum allowable concentration, measured in parts per million (PPM), of the following heavy metals in paint are:
  - Barium < 0.01%
  - Cadmium < 0.01%
  - Chromium < 0.01%
  - Lead < 0.01%

## Sound Performance

ISO 6395:2008 (external) 103 dB(A)

ISO 6396:2008 (inside cab) 70 dB(A)

- Hearing protection may be needed when operating with an open operator station and cab (when not properly maintained or doors/windows open) for extended periods or in a noisy environment.

## Oils and Fluids

- Caterpillar factory fills with ethylene glycol coolants. Cat Diesel Engine Antifreeze/Coolant (DEAC) and Cat Extended Life Coolant (ELC) can be recycled. Consult your Cat dealer for more information.
- Cat Bio HYDO™ Advanced is an EU Ecolabel approved biodegradable hydraulic oil.
- Additional fluids are likely to be present, please consult the Operations and Maintenance Manual or the Application and Installation guide for complete fluid recommendations and maintenance intervals.

## Features and Technology

- The following features and technology may contribute to fuel savings and/or carbon reduction. Features may vary. Consult your Cat dealer for details.
  - Smart mode matches machine power to digging requirements automatically
  - Automatic Engine Control reduces engine speed when the machine is not under load to minimize fuel consumption
  - Enhanced filters and extended service intervals help decrease maintenance costs
  - The latest hydraulic oil filter provides longer life with a 3,000-hour replacement interval

For more complete information on Cat products, dealer services, and industry solutions, visit us on the web at [www.cat.com](http://www.cat.com)

© 2024 Caterpillar  
All rights reserved

Materials and specifications are subject to change without notice. Featured machines in photos may include additional equipment. See your Cat dealer for available options.

CAT, CATERPILLAR, LET'S DO THE WORK, their respective logos, "Caterpillar Corporate Yellow," the "Power Edge" and Cat "Modern Hex" trade dress as well as corporate and product identity used herein, are trademarks of Caterpillar and may not be used without permission. VisionLink is a trademark of Caterpillar Inc., registered in the United States and in other countries.

AEXQ3980-00 (09-2024)  
Build Number: 05F  
(Chile, Colombia)

