

CAT® GROUND ENGAGING TOOLS FOR MINING

# MINING BETTER TOGETHER

TAKE A CLOSER LOOK AT HOW CAT® GROUND ENGAGING TOOLS  
BRING VALUE TO YOUR MINE SITE



CAT®

# MINING BETTER TOGETHER

## CAT® GET SOLUTIONS

**Reduce operating costs, improve machine performance, and extend uptime with Cat® Ground Engaging Tools (GET).**

Our range of GET systems are performance-built for specific applications, offering rugged durability, solid protection, and the lowest cost per ton. Whether you have a Cat or mixed fleet, our industry-leading product availability and unmatched dealer network ensure you get the right parts and expert service anytime, anywhere.

Ready to see bottom-line difference in your work?

**Take a closer look at Cat GET.**





# CAT MINING GET SYSTEMS

## DESIGNED WITH YOUR OPERATION IN MIND

Cat GET are designed to improve your machine's performance in any application. Pair this industry-leading iron with 24/7 support from your Cat dealer and you've got the reliability you need to mine with confidence.

## PERFORMANCE

GET systems are tailored to your application, helping you get the lowest cost per ton and longer wear life on components while increasing your penetration power.

## SUPPORT

Cat dealers are GET experts. They're able to provide 24/7 maintenance, inspection insights, cost-tracking, and more.

## RELIABILITY

Cat GET offers industry-leading product availability and designs that promote fast changeouts. All of this helps your machine stay running, protected, and productive.



# GET SYSTEMS FOR HYDRAULIC MINING SHOVELS

**MEET YOUR PRODUCTION AND LIFECYCLE GOALS IN ANY APPLICATION.**

We've developed Cat GET systems to increase the efficiency of your hydraulic mining shovels in any mining condition.

## **CL-1 FOR 400 TO 1000 TONS**

### **High Performance, Maximum Protection**

Two styles of the CL-1 system are available: a performance-focused system designed to increase productivity and an extended wear life system with added durability for high abrasion areas. Lip repairs are minimized due to the tapered nose design and shroud stabilization.

## **X-2 SYSTEM FOR 100 TO 400 TONS**

### **Flexibility and Reliability**

The X-2 GET system offers industry-leading durability and six different tip options, giving you the tools you need to tackle any job and keep your machine productive. Hammerless components with CapSure™ retention shorten maintenance and repair time and require no special tooling.

## **X-3 SYSTEM FOR 400 TO 1000 TONS**

### **Increased Uptime and Safety**

The X-3 GET system readily fits onto existing nose base systems for 500-ton Hydraulic mining shovels. The side pin and vertical (wedge and spool) couplers work with a full selection of tip styles and lip protection. Meanwhile, the retainers are built into the tips so the system locks and unlocks with just one turn, offering quick changeouts and installation.

**ASK YOUR CAT DEALER ABOUT CUSTOM SOLUTIONS FOR HYDRAULIC MINING SHOVEL**

# GET SYSTEMS FOR ELECTRIC ROPE SHOVELS

## ENHANCE YOUR PERFORMANCE

Cat GET systems are designed to meet your cost-per-ton and cost-per-hour requirements in any mining application, so your machine stays protected, and you meet your production goals.



## WH12 ENERGY DISTRIBUTION TECHNOLOGY (EDT) FOR 7495 CLASS MACHINES

### Reliability and Cost Savings

The EDT system maximizes adapter life and reduces lip wear by redirecting dig energy. With less welding time than other stabilized systems, maintenance and installation are more efficient. It delivers top-notch reliability in extreme environments, all while increasing lip lifecycle and productivity.

## THE HAMMERLESS X-4 SYSTEM FOR ELECTRIC ROPE SHOVELS 800 TO 1,500 TONS

### Efficiency and Power

The industry-standard Whisler style adapter is combined with CapSure retention and hammerless screw-driving capabilities, making installation and removal quicker and safer than hammered alternatives.



# GET SYSTEMS FOR LOAD HAUL DUMP LOADERS

## PUSH PRODUCTIVITY FURTHER

Cat GET are designed to improve the performance of your load haul dump loaders and help you exceed your lifecycle and productivity goals.



### MODULAR SEGMENT SYSTEM FOR R1300 TO R3000 LHD

#### Smart, Reliable Solution

Modular Shrouds deliver welded part reliability with the replacement simplicity of a mechanical system. Wear indicators are visible from the topside to help establish maintenance intervals. Plus, beveled interlock weld speeds up installation and improves strength and reliability.



### CAT BOLT-ON HALF ARROW SYSTEM

#### High Performance

The bolt-on half arrow (BOHA) system delivers best-in-class lip protection with fewer parts than competitive systems. This system helps you reduce maintenance costs through better protection and fewer parts to manage. BOHA segments have superior hardness versus welded components.

### CAT DURILOCK™ SHROUD SYSTEM WITH CAT INFINITITE™ RETENTION FOR R1700 AND R3000 LHD

#### Hassle-Free Adaptability

Cat Durilock™ Shrouds offer three performance levels to adapt to your ever-changing mining environment in minutes without having to change the base edge or retention system. Infitite™ secures the three-shroud systems for maintenance-free retention and no re-torque.



# GET SYSTEMS FOR DOZERS

## GIVE YOUR PERFORMANCE AN EDGE

Dozers work in dozens of industries, applications, climates, and environments. Adaptable Cat GET systems help deliver the site-specific edge they need.

### CAT CUTTING-EDGE SYSTEMS

#### Increased Performance

We work with you to match your cutting edges and end bits to your equipment. This gives you a balanced system, resulting in higher performance, lower cost, and abrasion resistance in any application. Choose between our Precision, Performance, and High-Abrasion options.

### BLADE AND SIDEBAR PROTECTION

#### Cost-Efficiency

Protect your blades and sidebars from impact and abrasive wear. All Cat blades and sidebar products are manufactured to Cat machine specifications, making installation fast and efficient.

### RIPPER SYSTEMS

#### Power

Tooth penetration can be the key to ripping success. We offer a variety of tip styles and profiles to fit your mining application needs. You can also protect your ripper shanks with our various ripper protector options that help cut material and reduce ripper effort.



# GET SYSTEMS FOR LARGE WHEEL LOADER

## BOOST UPTIME ON THE JOB

Expand your machine's productivity in any mine site condition with our wide range of GET solutions, each available with multiple tip options. Cat buckets and GET make up the only full bucket system designed to maximize the performance and productivity of your Cat large wheel loader.

### CAT ADVANSYS

#### More Productivity

Cat Advansys is built for machine productivity in tough applications, balancing tip wear material and penetration requirements. The adapter design directs material flow over the adapter strap, helping extend adapter service life and bucket lifecycle. Integrated hammerless retention ensures you are back to work in minutes without a separate retainer.



### J SERIES

#### Proven Reliability

Great performance and proven reliability over time, that's what you get with this classic horizontal retention system, a staple in the mining industry. Weld-on adapters offer excellent retention and the standard side-pinned design performs across a variety of applications.



### K SERIES

#### Penetrative Performance

K Series delivers digging performance throughout the life of the tip with its elliptical adapter nose and vertical retention design. The low-profile shape provides optimal sharpness and penetration. Rails on both sides of the adapter and a twist-on design hold the tip in place, making installation easier.



### HAMMERLESS WITH CAPSURE RETENTION

#### Convenient Adaptability

Simplify bucket tip replacement with hammerless CapSure retention. These tips are matched to side-pin adapters, allowing the flexibility to use our conventional pin retention. Positive stop is cast into the pin to prevent over-rotation and the combined tip-and-retainer-design offer a quick change-out and installation process with no special tooling or assembly.



# GET SYSTEMS FOR LARGE WHEEL LOADER

## BASE EDGE SYSTEMS

### MECHANICALLY ATTACHED ADAPTER SYSTEM (MAA)

#### Performance and Convenience

Featuring side-pin adapters and CapSure GET components, our MAA system uses a bolt-in wedge method to tighten a C-clamp, which locks the adapter securely in place every time. The full base edge protection reduces wear to lower operating costs while the bolt-in design offers a safer installation.

### FLUSH-MOUNT ADAPTER SYSTEM

#### Increased Productivity

Our flush-mount adapter system is ideal for high-impact, high-abrasion applications. The upsized adapter and cover offer greater durability and more wear protection than a traditional two-strap system. The complete weld-around design also provides more weld strength than a two-strap system, boosting your equipment's uptime.

### SERRATED EDGE SYSTEM

#### Cutting-Edge Versatility

The serrated cutting edge increases the penetration capabilities of Wheel Loaders in highly compacted soil or in applications with high-impact loading requirements. This lends greater versatility to the machine without requiring bucket swaps or additional GET. The self-sharpening chamfers in this system provide increased penetration and keep your production levels at their peak.



## CUTTING EDGE SYSTEMS

### BOLT-ON CUTTING EDGES (BOCE)

#### Longevity

Cat bolt-on cutting edge options are available in standard and heavy-duty Cat Abrasion Resistant Material (ARM) and half arrow options. Cat ARM is recommended for applications where sand, gravel, or other abrasive materials severely diminish wear life. The hard tungsten carbide particles bonded to critical wear areas on the edge provide up to five times greater wear life.

### CAPSURE RETENTION SHROUDS

#### Powerful

Shorten changeout time without sacrificing base edge protection with easy-to-install shrouds, available in a range of thicknesses and angles. Hammerless CapSure retention shrouds were designed for high-abrasion bucket systems. These shrouds can be matched with J or K Series adapters.

### TOP COVERS, SEGMENTS, AND HALF ARROW SEGMENTS

#### Premium Protection

Half arrow segments offer a smooth transition of material over the base edge to protect the leading edge. Top covers work with the half arrow segments to protect the base edge fully. And segments are ideal for moving rehandled materials with medium impact and medium abrasion. The protective pieces can be changed separately, making changeouts and maintenance planning simple.

### BASE EDGE END PROTECTION (BEEP)

#### Cost-Cutting Protection

Reduce base edge end wear and subsequent corner adapter weld erosion with our BEEP design. It makes adapter replacement on the edge much easier when it's time to rebuild the base edge assembly. The extended base edge end protects the adapter corner welds and extends the time between changeouts.

# GET SYSTEMS FOR LARGE WHEEL LOADER

## SIDE AND CORNER PROTECTION

### SIDEBAR PROTECTION

#### Flexible Security

Increase uptime by protecting pins and reduce maintenance costs by securing bucket edges. Choose between sidebar protectors with CapSure or the mechanically attached Performance Series protectors for hammerless installation.

### CORNER GUARD SYSTEM

#### Cost-Saving Protection

Reduce your bucket's maintenance costs and increase bucket performance. Cat corner guards are an easily replaced bolt-on system to fit your 950-982 Wheel Loader buckets. These corner guards are available with and without adapters for to fit your application needs.



## LARGE WHEEL LOADER BUCKETS

We offer four standard bucket durability categories, each based on the bucket's intended durability when used in the recommended application and material.

### GENERAL PURPOSE

- + Good all-around performance for stockpiling, re-handling, excavating, and bank loading.
- + Intended for use in low-impact materials.



### MATERIAL HANDLING

- + Flat bottom bucket for stockpile loading of loose materials such as gravel, sand, and dirt in load-and-carry applications.
- + Intended for use in low-impact materials.
- + The best performers for production loading.



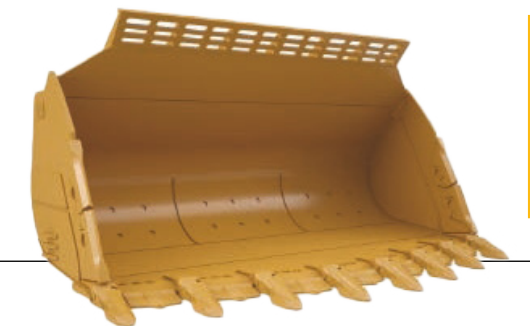
### ROCK BUCKETS

- + For use in applications such as face-loading limestone and other unprocessed rock. Also used in truck and hopper loading for a wide range of quarry materials.
- + Intended for use in moderate- to high-abrasion applications.
- + Balances the need for high production in more abrasive applications.



### HEAVY DUTY QUARRY ROCK BUCKET

- + For use where maximum abrasion resistance is required.
- + Intended for use in high-abrasion, high-impact applications.



# GET SYSTEMS FOR DRILLS

## INVEST IN EFFICIENCY THAT KEEPS YOU ON TRACK

Drilling sets the tone for the whole operation, impacting the speed, efficiency, and cost of all downstream operations. So, it's important to have the right GET to keep you on track. We offer a wide range of industry-leading GET solutions so your drills can excel in any application.

## DRILL BITS AND HAMMERS

### **TRICONE DRILL BITS**

#### **More Penetration**

Cat tricone drill bits are designed for the toughest and most severe rotary blasthole applications but are suitable for all your drilling needs. Our comprehensive tricone bit offering includes a wide range of bit diameters with various carbide shapes/cutting face arrangements to increase rate of penetration.

### **DOWN-THE-HOLE (DTH) BITS**

#### **Dependability and Efficiency**

Cat DTH bits are made of superior materials with precise engineering and manufacturing, and offer repeatable, dependable results. Designed for efficient operation and low total drilling costs, Cat DTH Bits are made from high-quality alloy that delivers maximum bit hardness without sacrificing toughness.

### **DOWN-THE-HOLE (DTH) HAMMERS**

#### **Powerful Force**

Cat DTH Hammers are designed to drill faster and last longer in even the toughest blasthole applications. With three hammer options available, each with a unique design that manages impact force and piston frequency to deliver a powerful rate of penetration, you're sure to find a solution that increases your efficiency.

#### **SD HAMMER 75-250 MPA**

High-impact load at reduced blow frequency, suitable for low or medium hardness rock formations.

#### **HP HAMMER 250-550 MPA**

This hammer is built tough for production drilling in hard rock. It has an improved performance curve of impact force and blow frequency for the upper range of rock hardness.

#### **TF HAMMER 150-360 MPA**

This hammer has the same attributes as the HP hammer, but it is shorter and lighter, making it easier to handle.

# CUSTOM SOLUTIONS

Any investment in Cat GET comes with **24/7/365 support** from your Cat dealer. We work to provide GET solutions for your entire fleet and help you exceed your operation goals.

## TOTAL WEAR PROTECTION (TWP) LINE

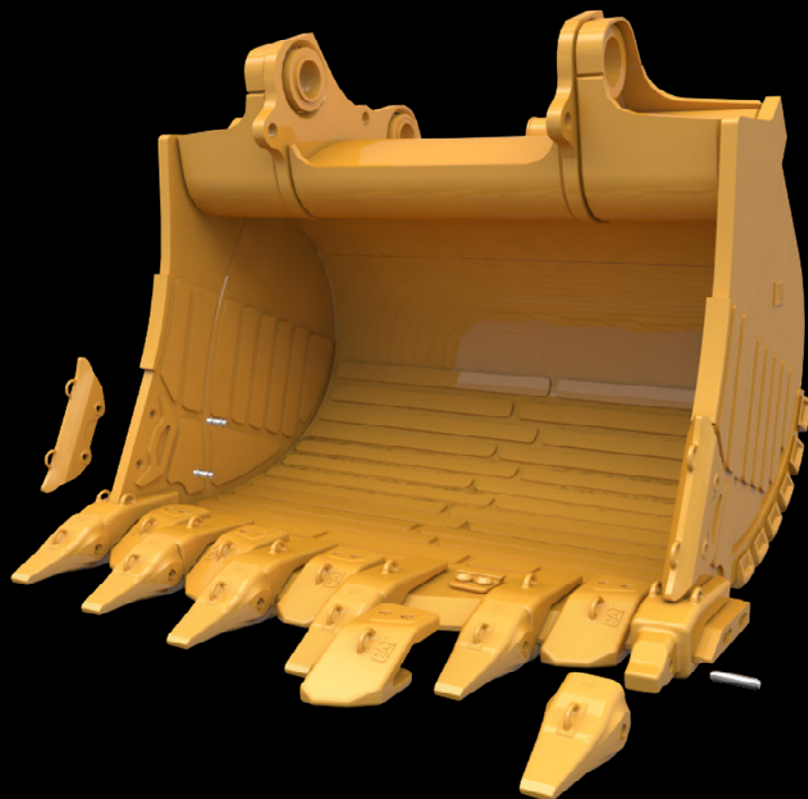
Our Total Wear Protection (TWP) line offers protection for every product on your site, from wheel loaders to cable shovels. Get extra laminated or manganese wear material wherever you need it to increase your machine's uptime.

## ABRASION RESISTANT MATERIAL (ARM)

Cat Abrasion Resistant Material is a coating made of extremely hard tungsten carbide particles that forms a protective shield over key wear surfaces. Cat GET coated with ARM is ideal for high-abrasion and low-to-moderate impact applications, offering extended life in tough environments.

## ENGINEERED TO ORDER CUSTOM PRODUCTS (ETO)

Bucket and blade products are continually refined as they work and wear, so your GET solution often needs to be tailored to your unique wear environment. Your Cat dealer can provide that custom product for your application.



# CAT GET SYSTEMS COME WITH SUPPORT

## GET AND BUCKET CUSTOMER VALUE AGREEMENT (CVA)

A Cat Customer Value Agreement (CVA) for GET and buckets is a hassle-free service plan that helps you keep the right components on hand and ready to go. Your Cat dealer will work with you to monitor performance, inventory, and wear, keeping your costs minimized, and your productivity at its peak.



## CAT BUCKET PRO

This app-based tool helps you track the wear on your buckets and GET so you can make cost-effective and data-backed decisions about maintenance and products.

## FLEET BUCKET PROGRAM

As part of our promise to support our customers, we're happy to work with you and any bucket manufacturer to optimize your GET system.



# TOGETHER, WE'RE MINING BETTER

We're committed to helping customers mine better; whether through equipment or dealer-offered services. It's our mission to achieve the highest levels of safety, efficiency, productivity, and sustainability.

Thank you for being a Caterpillar customer. It's our pleasure to support your operation.



PEDJXXXX.

©2024 Caterpillar. All Rights Reserved. CAT, CATERPILLAR, LET'S DO THE WORK, their respective logos, "Caterpillar Corporate Yellow", the "Power Edge" and Cat "Modern Hex" trade dress as well as corporate and product identity used herein, are trademarks of Caterpillar and may not be used without permission.

