

CAT® UNDERCARRIAGE FOR 7495 ELECTRIC ROPE SHOVELS

HEAVY DUTY TRACK ROLLER



HEAVY DUTY TRACK ROLLER

**LONGER WEAR LIFE WITH REDUCED
OWNING AND OPERATING COSTS**



LARGER DIAMETER

- Larger outside diameter roller vs. current production roller
- More material for longer wear life
- Compatible with existing HR/HF roller frames; requires two modified super bolts



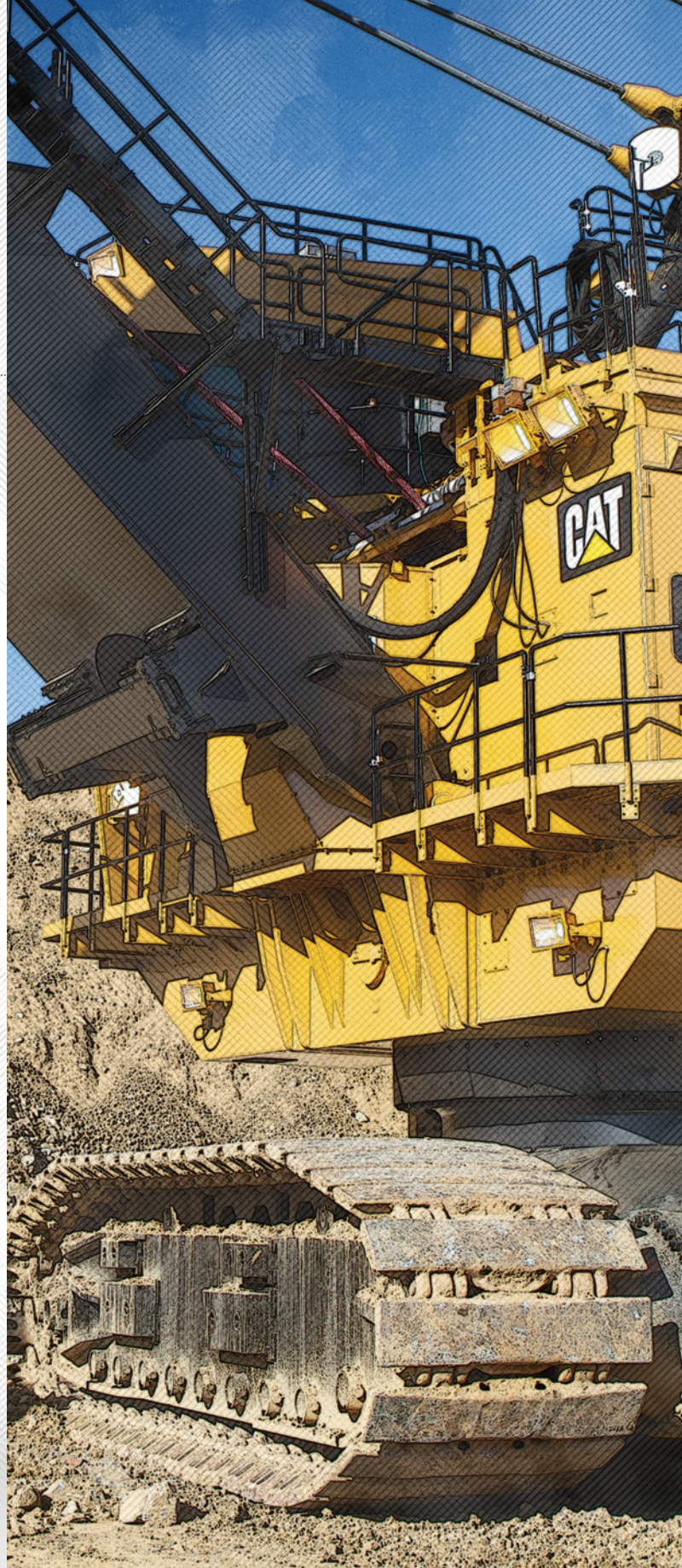
IMPROVED PERFORMANCE

- Reduced rotation speed
- Reduced roller path contact pressure
- Optimized clearance between track pad and frame



COST-SAVINGS

- Improved cost per hour
- Increased wear life up to 35%
- Reduced maintenance downtime



PEX01336

© 2023 Caterpillar. All Rights Reserved. CAT, CATERPILLAR, LET'S DO THE WORK, their respective logos, "Caterpillar Corporate Yellow", the "Power Edge" and Cat "Modern Hex" trade dress as well as corporate and product identity used herein, are trademarks of Caterpillar and may not be used without permission.

CAT®